



THE LYMINGE NEWSLETTER

For the communities of LYMINGE, ETCHINGHILL, RHODES MINNIS & POSTLING
<http://www.lyminge.org.uk/>

June 2009

Produced by
THE LYMINGE ASSOCIATION

LYMINGE ASSOCIATION NEWS

Open Gardens Safari on Saturday 27th & Sunday 28th June

Gardens open to the public. You are invited to walk around Lyminge, Skeete and Etchinghill to admire 15 gardens with a wide variety of designs and planting styles. From 10.00 a.m. to 6.00 p.m. on both days (unless indicated in the Passport).

Lyminge Parish Church Flower Festival. Enjoy the beauty and serenity of the church with the very attractive floral displays that are based on a theme of 'Seasons in Flowers' and complimented by quilts made by some of the Church members. They are also tempting you with Cream Teas and Ploughman's Lunches. Look out for their advert inside with a variety of opening times including Monday 29th.

The Ethelburga Quilters Quilting Exhibition. Admire an exquisite display of recent work in an exhibition at the Lyminge Methodist Church Hall from 10.00 a.m. to 6.00 p.m. on Saturday and from 2.00 p.m. to 6.00 p.m. on Sunday.

The cost is £3 per adult for a 'Passport' to visit the whole weekend's events. A small price to enjoy so much beauty and dedication.

Passports. These will be available in advance from about 20th June at Lyminge Hardware Store and on either day of the event at Lyminge Methodist Church Hall.

THIS MONTH'S SPONSOR OF THE NEWSLETTER IS:

Don't Forget, Charity Garden Open Day Saturday 18th July

2pm – 5pm at Little Garth,
Brady Road, Lyminge

Entrance £1 with stalls,
tombola, garden themed
quizzes, live music and
cream teas



Or why not join us from 7pm for an evening of live traditional folk music in the garden with The Buck Thorn Band from 7.30pm
£2 admission with a complimentary Hot Dog in the interval. Evening raffle. Please feel free to bring own seating and evening picnic

All proceeds to Leukaemia Research in memory of Joy Betts

LYMINGE PARISH CHURCH SERVICES

Wednesday 3rd June 7.00pm Holy Communion (short said)
 7.30pm Open House (Bible study)
 9.15pm Wednesday Silence (quiet prayer until
 10.00pm)

Sunday 7th June 8.00am Holy Communion
10.30am WOW (World of Worship)

Wednesday 10th June 7.00pm Holy Communion (short said)
 7.30pm Open House (Bible study)
 9.15pm Wednesday Silence (quiet prayer until
 10.00pm)

Sunday 14th June 10.30am Holy Communion

Wednesday 17th June No Holy Communion Service
 7.30pm Open House (Bible study)
 No time of silence & quiet prayer

Sunday 21st June 10.30am Family Communion
6.30pm Evensong

Wednesday 24th June No Holy Communion Service
 7.30pm Open House (Bible study)
 No time of silence & quiet prayer

Sunday 28th June 8.00am Holy Communion
10.30am Holy Communion

Sunday Afternoon Tea - Nailbourne Court – 7th June

These teas are held on the first Sunday of the month in the lounge from 3 - 5pm. If you would like to come but need a lift, please ring Vanessa at the Rectory

Coffee morning - Wentworth Close – 8th June

Coffee mornings are held on the second Monday of each month from 10.00am to 11.30am in the lounge. Do join us as we meet with the residents of Wentworth Close for coffee and a chat.

Mothers Union – 10th June

The Mothers Union will meet at 2.00pm outside the Methodist Church for a trip to Bybrook Barn Garden Centre & tea rooms

Pram Service – 11th June

A short friendly service for pre-school children, followed by refreshments, which is held on the second Thursday of each month at 2pm in Lyminge Parish Church.
 The service will finish in plenty of time to collect older children from school.

Bereavement Support Lunch – 18th June

These lunches are held on the 3rd Thursday of each month at 12.30pm in the Coach and Horses. The meal comprises two courses followed by coffee, at a cost of £6.50 per head. All welcome.
 Transport can be arranged for those who need it.
 Please let Vanessa know if you would like to book a place.

LYMINGE METHODIST CHURCH

Visitors are very welcome to join us at our weekly Service at **11am** and invited to share fellowship afterwards with a cup of tea/coffee

Preachers for June are

7th June No service in Lyminge
 United Valley Serviced at Elham 9.30am
14th June Mrs Val Redding
21st June Rev. Barry Armson
 (incl Holy Communion)
28th June Mr Tim James

Wed. 24th June 7.30 – 8.30pm
 "Reflections" – alternative, less formal
 worship

Monday Fellowship

Weekly 2.30 – 3.30pm in Church parlour
 A variety of speakers, discussions, music, etc
 and a chat over a cup of tea. Open to men
 and women.

For Baptisms, Weddings or Funerals, please
 contact the Minister, Rev Barry Armson, on
 01303 266281

RHODES MINNIS METHODIST CHURCH

This small Chapel in beautiful countryside surroundings holds a weekly Sunday Service normally at 9.30am

Followed by coffee and biscuits

A warm welcome is extended to any visitors

The Preachers for June are

7th June NO service at Rhodes
 Minnis but a joint service
 with Elham Methodist
 9.30am
14th June Mrs. Val Redding
21st June Rev. Barry Armson
 (Holy Communion)
28th June Mr. Dudley Shipton

POSTLING CHURCH

You will receive a very warm welcome in this little church set in the pretty village of Postling where a service is held every Sunday

June 7th Evensong 6.30pm
June 14th Family Communion 9.30am
June 21st Holy Communion 8am
June 28th Family Service 9.30am

L.E.T. (Lyminge Ecumenical Team)

Prayer Box. Please place any prayer requests concerning a bereavement or illness in the prayer box at Lyminge Post Office. It would help to have the name of the person you are praying for but not necessarily your name.
 These will be included in Sunday worship in both churches and added to private prayer life.

Pilgrims Hospices
IN EAST KENT

Wed 3rd June Fashions for the Hospice and our usual Coffee Morning
Holy Trinity Church Hall,
Sandgate Road
Folkestone

Note Any donations of clothes or accessories can be collected:-
Ring Barbara on 256826
Or Doreen on 251980

Elham Valley and Wye Lions Club

You may be just in time for our annual concert featuring the **Railway Swing Band** with special guest vocalists Didi and Kai McKenzie at Elham village Hall on **Wed 3rd June**.

This year's concert is in aid of Macmillan Nurses and Pilgrims Hospice. Don't miss it!

Tickets available from Lyminge Hardware, or 01303 862837, or there may be some on the door. Also advance notice of our charity Golf Day on Fri 11 September.

Farmers' and Craft Market – 2009

At Etchinghill Village Hall

From 10am – 12.30pm

On the first Saturday of each month
Next market on 6th June

Contact Bryan 01303 862832 or
Anne 01303 863174

Come and enjoy our
Summer Barn Dance
Saturday 6th June

at Blandred Farm, Selstead
Children free Adults £8
Tickets at Elham Valley Arts
or at the door, 7.30 - 10.30

Bring your own supper
Proceeds to St Mary's, Elham

NEWINGTON VILLAGE HALL
Registered Charity No 302812
ANNUAL SUMMER FETE
Saturday 13th June 2009
11.30am – 3.30pm

Fun and games for all:- with
Traditional sideshows
Coconut shy. Craft stalls
Smash'a'plate
Plus much more
Free entry – Free car parking

For more information please ring:-
Kirsty on 01303 272056
Karen on 01303 277950
Attractions correct at time of printing

Rhodes Minnis Village Café

Rhodes Minnis Village Hall, Chapel Lane, Rhodes Minnis.

An Evening with the
'Tuesday Stompers'
Swing Band

Friday, 12th June 2009
7.30pm – 10.30pm.

All Welcome



Refreshments. Sponsored by 'Roseneath Ceramics'.
Admission by donation
Supporting Mission Aviation Fellowship

MIDSUMMER QUIZ

13 JUNE 2009

Bar

2 Course Hot Supper

Tables of 4 – 8 persons

£8.00 per person

7.00pm for 7.30pm start

To book your table call:

Honor 862928 or Niki 862530

Organised by the Village Hall Management Committee
Reg Charity 281845

Elham Farmers' Market

The Rose and Crown courtyard, High Street, Elham
Next markets: **Sunday 14 and 28 June**
10.30 to 12.30

Come and celebrate Elham Farmers' Market's **first anniversary** on Sunday 14 June, with a free piece of birthday cake for early shoppers!

Fresh, seasonal, locally produced food (vegetables and fruit, meat, game, eggs, fish, cheese, bread and cakes, pies, and more)

Check on www.elhamfarmersmarket.co.uk for future dates, list of traders, latest news and recipe ideas.

In Aid of The Lord whisky Sanctuary Fund

Registered Charity: 2843483

Park House, Stelling Minnis, Canterbury, Kent CT1 6AN

Tel: 01303 862622 Fax: 01303 863007

Email: lord.whisky@btinternet.com

**Dog & Owners Fun Day
Saturday 13th June, 12 noon – 3.30pm**

Southern Retrievers Society

Gefion Dog Training

Stockbury Dog Training Club

Fun Dog Show – enter on the day

Raffles ~ Tombolas ~ Refreshments

Car Boots £7.50 ~ Vans £10

Admission by donation

Boot & Summer Fayre

Saturday 25th July

12 noon – 3.30pm

Boot & Autumn Fayre

Saturday 12 September

12 noon – 3.30pm

Don't forget to visit our Tea Rooms & Gift Shop

Open every day from 10am – 4pm at Rhodes Minnis

Freshly cooked meals, friendly service and reasonable prices.

Hot & cold lunches and snacks. Delicious home made cakes.

Fish & chip supper every Friday evening from 7.30pm

Take-away available. Phone 01303 862349

Beetle Drive

Saturday 27th June

**Come along and join us at
Rhodes Minnis Village Hall**

Start at 7pm

Adults £2.00 - Children 50p

Includes refreshments

There will be a raffle

LYMINGE HISTORICAL SOCIETY

Thursday 2nd July (change of usual day)

A visit to

Westenhanger Castle

Meet at Lyminge Methodist Church for those
requiring transport

There is a charge for this event of around £8.
for entrance

Non-members are welcome to join us

Lyminge Gardeners Society

Tuesday 16th June

A visit to Windy Ridge, another chance to have a look
round this lovely garden of Mr and Mrs Ryder.

Cost for this evening is £1.00 members and £2.00 non-
members. Light refreshments will be provided with a
small charge.

Be at the Library car park at 6pm for transport or at
Windy Ridge, Victory Road St Margaret's -at - Cliff at
6.30pm

**COME ON DOWN to
Etchinghill Village Hall**

Hog Roast and Ho Down

Saturday July 4th 7 -11pm

Country music, line dancing with caller

Join in the fun, western dress optional

Adult £ 7.50 Children 5 – 8 £2.50 8 – 16 £5.00

Under fives go free

Reserve your tickets now

Contact Keith or Rosemary 863 418

Flower Festival, 27th, 28th and 29th June

(The same weekend as the Garden Safari)

The theme for this year's Flower Festival is *Seasons in
Flowers*.

Floral displays will be linked to the seasons of the year as
well as the seasons of the Church.

The flowers will be complimented by quilts made by
some of our church members.

The Church will be open from 10am to 5pm on Saturday
27th June, but because there is a wedding that afternoon,
the Church will be closed between 2 and 4pm, but
refreshments will still be available in the marquee in the
Churchyard.

On Saturday evening there will be a concert in Church by
the AGAPE CHOIR starting at 7.30pm.

On Sunday 28th June, the Church will be open after the
Eucharist Service until 5pm.

On the final day the Church will be open from 10am to
5pm.

On all three days Cream Teas will be available in the
Marquee from 2pm to 4pm and on the Saturday and
Monday, Ploughman's Lunches will be served from
12noon to 2pm and on the Sunday from 12.30pm to 2pm

LYMINGE VILLAGE HALL

Invites you to a

FAMILY DAY

ON

SATURDAY JULY 11TH

AT

3:00PM

The fun includes

TREASURE HUNT

GAMES

BAR-B-QUE

**For further information please
contact**

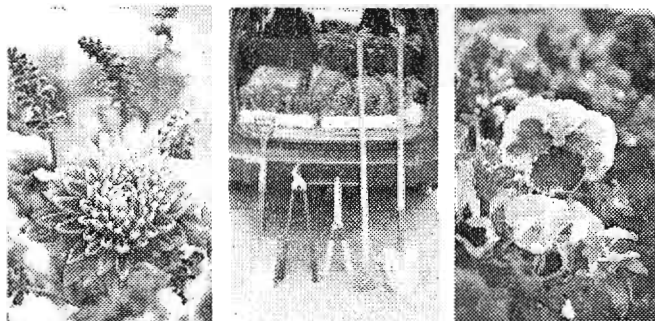
Honor- 862928 or Niki- 862530

Organised by the Village Hall
Management Committee Reg Charity
281845

Don't Forget, Charity Garden Open Day Saturday 18th July

2pm – 5pm at Little Garth,
Brady Rd, Lyminge
Entrance £1 with stalls,
tombola, garden themed
quizes, live music and
cream teas

Or why not join us from 7pm for an evening of
live traditional folk music in the garden with
The Buck Thorn Band from 7.30pm
£2 admission with a complimentary Hot Do
in the interval. Evening raffle. Please feel free
to bring own seating and evening picnic



All proceeds to Leukaemia Research in memory of Joy Betts

The Rude Mechanical Theatre Company
Saturday 19th July at 7.30pm

Mother Sweetapple

Don't miss this great show from the Rudes!
Set in 14th Century Tuscany.
Part fairy tale. Part detective story
Hilarious and bawdy
Poetic and challenging

Further details on 01323 50 12 60 or visit our
website
www.therudemechanicaltheatre.co.uk

Rhodes Minnis Summer Flower Show

Saturday 1st August 2009
At Rhodes Minnis Village Hall
Open to view 2.30pm

If you wish to enter the show, schedules are
now available from
Daphne Andrews on 01303 862865

Opening for the first time under the National Gardens
Scheme and jointly with Mounts Court Farmhouse is
The Farmhouse, Acrise Place.

The garden was designed for the owners by Debbie
Jolley in 1998 and has been developed in stages
since then. It contains a formal area with pond close
to house (C18 not open) and potager-style rose
borders. This gives way to large mixed borders with
all year interest. There is also a large pond, uncut
grass and mown paths in woodland, a developing
orchard and wild flower area. There are many roses
including species and scramblers.

Mounts Court Farmhouse is about a half a mile away
from The Farmhouse, Acrise Place. Homemade teas
are offered at Mounts Court as are plants. Plants
are also available at The Farmhouse. Joint entry to
the two gardens is £5, single garden £3 and children
are free. Both gardens are open on Sundays 7 June
and 12 July from 2 – 5pm.

The gardens will be signposted between Lyminge
and Elham on the Elham Valley road and opposite
the Black Horse on the Folkestone - Canterbury road.

Etchinghill W.I.

Coach trip to Sissinghurst Castle Gardens
Tuesday 4th August

National Trust Members £10.00
Visitors £18.00
Lunch etc. available

Coach leaves Etchinghill (opp. New Inn)
9.15am
Station Road, Lyminge 9.20am

For further details contact Stella on 862363

LATE ENTRY –PLEASE NOTE DATE

Lyminge School **Summer Fair**

Tayne field - next to the school
Saturday 13 June
11.00am to 2.00pm

To be opened by a special mystery guest!
Many stalls, arena events, barbecue, inflatables
and much more!
Open to all

Forthcoming Village Events

We would like you to give us details of your future events for this page. This will help us all plan for our own events and help spread them throughout the year. There is no charge for entries on this page. For entries into future issues please phone **Gillian on 863232**.

One Off Events In Forthcoming Months		When and Where?	Contact Details	
6 June	Bingo Afternoon	2:00 Methodist Hall	864394	Dean
13 June	Summer Fair	Lyminge Primary School	862367	
13 Jun.	Dog & Owners' Fun Day	12:00 Lord Whisky, Park House	862622	Margaret
13 Jun.	Quiz Night	7:30 Lyminge Village Hall	862928	Honor
27/28 Jun.	Gardens open	Gardens around the Village	862073	Mike
1 Jul.	Rhodes Minnis Methodist Lunch	1:00 Rhodes Minnis Village Hall	862865	Daphne
4 Jul.	Hog Roast & Ho-down	Etchinghill Village Hall	863418	Keith
10 Jul	Royal British Legion Committee Mtg	St Mary's Hall Elham	864255	John
11 Jul	Family Fun Day	3:00 Lyminge Village Hall	862928	Honor
1-Aug	Summer Flower Show	Rhodes Minnis Village Hall	862865	Daphne
11 Sept	Royal British Legion Committee Mtg			
12 Sept.	Boot & Autumn Fayre	12:00 Lord Whisky, Park House	862622	Margaret
12 Sept	Proms in the Park	7:30 Lyminge Village Hall	862928	Honor
19Sept	Royal British Legion Annual Lunch	Lyminge Village Hall	864255	John
20 Sept	Garage Safari	9:00 Garages around the Village	863197	Liz
4 Oct.	Rhodes Minnis Harvest Festival	Rhodes Minnis Methodist Church	862865	Daphne
7 Oct.	Rhodes Minnis Methodist Harvest Lunch	1:00 Rhodes Minnis Village Hall	862865	Daphne
10 Oct	Quiz Night	7:00 Lyminge Village Hall	862928	Honor
28 Oct.	Rhodes Minnis Village Hall AGM	Rhodes Minnis Village Hall	862865	Daphne
5 Nov	Bonfire Night and Fireworks	6:30 Lyminge Village Hall	862928	Honor

Weekly Events Dates 2009		When and Where?	Contact Details	
Mondays	Etchinghill Open House	Etchinghill Village Hall	863418	Rosemary

Monthly Events Dates 2009		When and Where?	Contact Details	
1 st Tue.	Lyminge Historical Society	7:45 Lyminge Methodist Hall	840419	Derek
1 st Wed.	Lyminge Friends	10:00 Lyminge Methodist Parlour	862427	Mavis
3 rd Wed.	Rhodes Minnis Evening Circle	7:30 Rhodes Minnis Village Hall	862913	Marion
1 st Sat.	Farmers and Craft Market	10:00 Etchinghill Village Hall	862832	Bryan
4 th Sat. ¹	Beetle Drive	7:00 Rhodes Minnis Village Hall	862616	Mick
3 rd Sun. ²	Parish Walk	10:00 Lyminge P.O. Car Park	862015	Richard
3 rd Tue.	Etchinghill W. I. Meeting	2:30 Etchinghill Village Hall	862141	Dottie
Last Mon.	Parish Council Meeting	See Parish Notice inside Newsletter	862184	Pam

Copy deadline for next month's newsletter is the 18th of the month

Call Jean Howard on 01303 862488 or email in word doc. format to jean.howard1@talktalk.net. Money must be received before articles can appear in the newsletter. A paper copy and money can be left at the Lyminge Newsagents or the Lyminge Library. Charges are as follows: Business adverts - £8.00 per month or £80.00 per year (12 issues for the price of 10). Charity adverts - £1.50 per month or £15.00 per year (12 issues for the price of 10). Please make cheques payable to The Lyminge Association

¹ Beetle Drive will be held on 3rd Sat., except in December when it will be held on the 2nd Sat. of the month.

² Parish Walk will start from Rhodes Minnis Village Hall on 13th September.

³ Boot Fairs on 20 June, 11 July, 1 Aug, 29 Aug, 19 Sept, 3 Oct, 17 Oct.

Lyminge Association News

Photo competition and 2010 Lyminge Calendar

We are launching a competition to submit a **photograph** of a nature or country scene taken either in a local garden or within our parish.

An expert photographer is lined up to judge the competition with a small prize being awarded to the winner plus the honour of this photograph appearing on the front of our proposed 2010 calendar. Entrants will need to agree to us using their photographs as some may be selected for the calendar.

Children's' entries (under 16 years), will be judged separately with a small prize to the winner.

The Open Gardens Safari event would be an ideal opportunity to take that photo.

Deadline for submission of photos is 31st July 2009. Photographs need to be printed in a form no larger than A4 or smaller than 5" x 6"

Send to Korf House, Canterbury Road, Lyminge (opposite Food & Wine) clearly marked with your name and address (and age if under 16). If you want the copy of your picture returned please supply a suitable s.a.e.

Wanted: A person with an advertising or graphic design background. We are looking for a person to offer a one-off review of our publicity material. **If you are that person please contact John on 862972**

Newsletter deliverers. We are also looking for a few more volunteers either to deliver to a part of the village near you or to act as a deliverer of bundles to some of the other volunteer deliverers. **If you can help in any way please contact Mike on 862073**

Lyminge Dramatic Society - Babes in the Wood

November will be Panto time as the Society puts on an exciting new production of "Babes in the Wood". Written by Brian Edmond and to be directed by Matt Nixon, the pantomime will run from Tuesday 1st to Saturday 5th December and involves the usual mix of pantomime characters. We are looking to cast children and young people in the production, either as one of the two Babes or as village children. We are holding a special reading and casting session for children only at **Sibton Park Cricket Club on 1st July at 5.00pm**. If you cannot make this date, but your child is keen to be considered, please ring Tricia on 862008 or Catherine on 862602.

Adults will be most welcome to attend the main reading to cast the pantomime which will start at 7.45pm, also at Sibton Park Cricket Club on 1st July. There are lots of parts to be cast, so why not come along? Adults wishing to audition should ring Catherine on 862602 for a copy of the script.

Why not make a note of the performance dates in your diary for what promises to be a spectacular show.

Age Concern Lyminge

In April Age Concern Elham Rural changed its name to Age Concern Lyminge. Our operations and services continue unaffected.

We are looking to recruit volunteer drivers. Sessions are split 9am till 11am and then 2.30pm till 4pm. Drivers are assisted by trained Care Assistants whilst transporting clients to and from the centre. A Criminal Records Bureau check will be required but this is organised by us. Even if you are only able to offer help one session per week we would be grateful. If you are interested in helping please contact Matthew Martin on **01303 862364**

Our Information and Advice Officer, Mike Foxon is available to help check benefit entitlements and provide practical help to complete application forms for Attendance Allowance, Pension Credit, Disability Living Allowance, Carers Allowance, Council Tax and Housing benefits. Please contact Mike on **01303 863861**, home visits can be arranged.

We now have an Information point within the Centre in Everist Court. There is a computer with Internet access, guidance books and leaflets published by Age Concern and Help the Aged. (Age UK) and there is also a directory and leaflets about organisations and services available in Shepway.

All of our Information services are provided free of charge.

We have some availability for lunches within the centre. Lunch is served at mid day for £3.75. Please contact the centre if you wish to come in for lunch or use any services ask for **Lisa Hodden or Matthew Martin on 01303 862364 or just pop in to the Centre at Everist Court.**

Gentle Keep Fit Classes

For those with creaky joints or impaired mobility, who wish to improve their fitness, balance and stamina.

Come along and see if this is for you. Your first class is free.

We are a friendly crowd and a lycra leotard is definitely not needed!

Methodist Church Hall, Lyminge on Wednesdays 11.15 am. – 11.45 am.

Contact Barbara on 01303 862873 for further information

ETCHINGHILL UPDATE

Village Hall - AGM

Over 30 residents turned out for the AGM this year. The activities of the Management Committee over the last 20 months plus Open House since September last year were reported and our financial situation is secure. User group nominations together with elections to the committee for the next 12 months were carried out with a new committee of 14 Trustees standing for office

Copies of the Chairman's, Treasurer's and Secretary's reports are displayed on the Parish notice board for those not able to attend

Village Hall - Grounds

Hopefully the protective fence around the hedge and grass seed will be removed at the end of June and a further number of trees, donated through the Parish Council, will be planted along the front edge of the grounds. Are you a member of Anne's gardening team? Why not contact her on 863174 and offer your help?

Village Hall - Fabric

With all the Health & Safety issues to regularly attend to plus completing painting the hall both inside and out there is always a need for help in dealing with day to day minor problems. Are you a member of Bryan's maintenance team? Can you replace light bulbs, inspect fire extinguishers, construct fete games or sign boards, Contact him on 862832

Village Hall - Open House

Join friends, families and residents for an evening of music and dance in the garden of the hall from 7.00 pm onwards at the Hog Roast and Ho down in the evening of 4th July. Carving of the hog starts at 7.30 pm. Bring your own drinks. More information is displayed on the notice board at the hall entrance

Visits to a Magistrates' Court, Elham Vineyard, Lord Whiskey sanctuary (all with lunch afterwards), plus talks on Inheritance Tax avoidance, the palaces of Henry VIII, even the TRS2 (if you know what this is) and many others are planned for this year. So why not come along to our Monday morning meetings? There is a plant sale every week, and we hope to get a petanque competition going too. There is also a mini Olympics for the family to join in. Don't miss out! Come along any Monday at 10.00 am. As some of these events will not be held on a Monday all information for ongoing activities will be on the notice boards in the hall and at the entrance to the car park or on our web site www.etchinghill.org

Village Hall - Farmers'/Craft Market

Why not come along to the next market on 6th June? Bread, cakes, pies, fish, meat, eggs, vegetables, cards, sweets, crafts, teas and coffee are all there for you to buy. For details contact either Bryan on 862832 or Anne on 863174.

Residents' Association

Did you attend the bingo quiz last month? There must have been more than 50 people who did. Whether you were lucky enough to get the numbers or answer the quiz that gave you the numbers it was a great evening out. Over £200.00 was raised and goes towards the Christmas trees and lights at the two ends of the village.

Dates not to be missed

Open House	Every Monday 10.00 - 12.00 4 th July Ho Down and hog roast in the evening
Farmers/Craft Market	6 th June. 10.00 - 12.30

Etchinghill W.I

Members and three guests were welcomed to the Resolutions meeting by the President Barbara Syrett. Stella Samuels read the Resolutions report "S.O.S. Honey Bees". They all play a vital role worldwide in food crops and the environment. The resolution was passed unanimously.

Birthday posies were presented to Gladys Harris, Maggie Tappenden and Rita Warner.

Mr James White planted a Rowan tree at the side of the Village Hall which was donated by Etchinghill W.I. to commemorate the 90th anniversary of EKWI.

We then enjoyed a scrumptious tea provided by the hostesses Sylvia Cane, Daphne Melrose and Julie Tappenden.

Our next meeting is on Tuesday 16th June at 2.30 pm when Mr and Mrs Wagner will give a talk entitled 'Phantas Magoria'. Visitors are always welcome.

For further details please contact Barbara Syrett on 265229 or Dottie Cross on 862141

Lyminge Heritage Questions and Answers

Some new questions this month but first the unofficial weather statistics from Etchinghill for April 2009.

Maximum Temp	22.5 °C (15/4/09)	Minimum Temp	1.6 °C (1/4/09)
Maximum Wind Speed	16.5 mph (2-3/4/09)	Max. Rainfall in 24 hours	7.2 mm [0.3 in]

(15/4/09)

Beaufort Scale 4

Moderate Breeze

Monthly Rainfall

37.2 mm [1.5 in].

The 7.2 mm of rain came in one single hour during the thunderstorm that probably kept a lot of people awake.

Q16 What public houses have there been in the locality?

This is surprisingly complicated and the following alphabetical list may not be complete:

- The Ark Inn:** This public house was situated in Etchinghill just to the south of the New Inn (now Ark Cottages). It pre-dated the New Inn and was in existence in 1847 according to Bagshaw's Directory when the landlord was Noah Dent. (Was his first name inspiration for the pub's name?) It closed prior to the First World War and appears in Kelly's Directory for 1913.
- The Cat & Custard Pot:** This pub is famous as being a pilot's pub during WW2. It acted as an escape from the stresses of Hawkinge Aerodrome. Previously it was called the Red Lion and appears in Kelly's Directory between 1891 & 1913. Legend says that an artist painted a new sign for the pub which produced comments from the regulars that he had depicted a cat. Thus, the pub acquired its name although no one is certain how the 'custard pot' fits into the story.
- The Coach & Horses:** It pre-dates the '1888' which can be seen on the end wall. This was the year that it was rebuilt. Before, there was a smaller pub dating back to at least 1847 when the landlord was Thomas Friend according to Bagshaw's Directory. This area of Lyminge shows a typical village structure with inn, forge and school on the different corners of the cross roads.
- The Gate:** The Gate between Rhodes Minnis and Stelling Minnis can also be found in Bagshaw's Directory for 1847 when the victualler was Nicholas Swain. Other directories show him as a farmer so it appears he did not rely entirely on the pub for income. It closed as pub in the 1990s and is now a tea room for Lord Whiskey Animal Sanctuary. I suggested in a past article that this pub was named after a gate in the road that can be seen on old OS Maps.
- The Grocer's Arms** Apparently, a Grocer's Arms has been identified being in 'The Street' Lyminge in 1871 and featuring on the census for that year (*Paul Skelton* <http://www.dover-kent.com/Grocers-Arms-Lyminge.html> accessed 18/5/09). It seems that, this may have been more of a shop than a pub as it was a grocers, bakers, drapers and sold beer. It appears to have been short lived.
- The New Inn:** As we have seen, the name suggests that this inn was not the first in Etchinghill. Apparently Mary Fox established it in 1851 although the building is older, the north end possibly dating from the 16th century and the south end from the 18th century. Bagshaw's Directory for 1847 does not show the pub or its landlord.
- The Prince of Wales** This public house was situated in Rhodes Minnis at the top of Longage Hill and appears in Kelly's Directory for 1934 when Arthur Watts was the landlord. I have not found it in directories prior to WW1. Latterly, it became the Prince Charles & Lady Diana before closing in the 1990s.

This is probably not a complete list. I have been told of a Six Bells in Lyminge and might White Horse Lane and Cottages indicate an inn at Rhodes Minnis? I have not come across any definite evidence for these establishments through trawling old directories. Can anyone enlighten me for a future article? I have found in preparing this newsletter item www.historicaldirectories.org and www.hereshistorykent.org.uk most useful.

Finally two questions, **Q18 What is the history of the Parish Church's bells and the bell ringers** and from Raymond Stacey, **Q19 What is the history of Teddars Leas, Teddars Leas Lane & Teddars Leas House (previously known as Meriden House, Shepherd's Lees House and Thorney Lees House)?** If you can help with these questions, would like to ask something of your own or would like to comment about any aspect of the locality's heritage then contact me.

Alistair Bailey
(email: abailey447@aol.com tel: 864235)



LYMINGE HANDBELLS



The Lyminge Handbell ringers were pleased to play on Lyminge Day and have bookings at other local events to look forward to. If you have a special event this summer, where the sound of traditional hand bells will add to your celebration, why not consider handbells? We have a large selection of popular and classical music for all occasions. All we need is a large table, room for up to 10 players and a donation of at least £40 for our charity, the Pilgrims Hospice. A contribution to travelling costs is asked for if bookings are at locations more than 5 miles from Lyminge. Weekends and evenings only please and plenty of advance notice.

To request a booking please speak to Ro Edmond on 863201

2009 Archaeological Dig

The dig will take place at the Parish Church between July 6th and Aug 16th. The site will be worked Monday-Friday 9am-5.30pm and Sundays 10am-5pm.

Dr Gabor Thomas has called for volunteers to help out, both on the excavation and on the less strenuous work such as processing artefacts. If you are interested in helping, please contact him direct on Tel: 0118 378 5449 or e-mail gabor.thomas@reading.ac.uk

Once again, there will be guided tours of the site on Sunday afternoons at 2pm starting July 12th which will take in both the excavations and the star finds made each week.

Finally, put Friday 14th August 2009 into your diaries as this is the date when Dr Thomas will give his "end of dig" talk to the village in the Methodist Church as last year. The talk will cover the results of the finds analysis from the 2008 dig and a report on the dig and finds from this year.

Lyminge Village Hall fund raising committee would just like to say a huge thank you to all those who gave us help and support on Lyminge Day this year.

A special thank you to our sponsors, Duncan Harrington and Jas at Lyminge Pharmacy; to Joy who judged the cakes in the cake competition; to Ray for his generous milk donation and to our loyal friends who, uncomplainingly and tirelessly, give up their day to help us every year. We must also say thank you to the Folkestone ATC 99th Squadron.

We are delighted to say that we raised over three thousand pounds for the Village Hall.

We have one outstanding prize! If the parents of Daniel White, winner of the child's cake competition, could phone 862928, or 862696, then we can give you the details of his prize.

NOTE FROM LYMINGE PARISH COUNCIL

Dog fouling in the parish

Once again the number of complaints from parish residents about dog fouling on pavements, footpaths and open spaces is growing. Dog owners are reminded that it is their responsibility to ensure that their animal does not foul public areas in the parish. The field and paths around Etchinghill Village Hall and the footpaths in Lyminge, especially the ones close to the Parish Church and the Methodist Church, as well as Tayne Field, Well Field and the field close to the Lyminge Village Hall are particularly affected. Be a responsible dog-owner, clear up after your pet.

New Home Education Group in Lyminge

Tens of thousands of families in Britain choose to educate their own children rather than use the state school system. Home education can be deeply fulfilling and rewarding, offering families autonomy and flexibility, and freeing children from the restraints of the National Curriculum and SATS testing. Home Education is legal, there is no need to be a qualified teacher and there is no need to worry about social isolation. Many areas of the country have well established home education groups who meet regularly for workshops, visiting speakers, visits, outings and social events etc. We are a home educating family in Lyminge and would love to establish such a group in this area. If you are home educating, or are interested in doing so, please do get in touch. It would be fantastic to start a network of home educators in this area. Contact Sarah on 862775 or email elhamvalleyeducators@tiscali.co.uk

RHODES MINNIS TODDLER GROUP

We are a small group open to mums, dads, grandparents and carers who meet on Thursday mornings at Rhodes Minnis Village Hall from 10 am – 12 noon during term time.

Come and have a tea/coffee while having a friendly chat as your child plays. £1.50 per session (first session free)

'Phone Elaine on 01303 863096 if you need more information

LYMINGE BABY AND TODDLER GROUP

Calling all parents, grandparents or carers with children under school age at a loose end on Tuesday mornings. We meet every week (during term time) at the Methodist Hall in Lyminge between 9.30am - 11.30 am to give the children a chance to play and interact with others the same age.

We offer a wide range of craft and play activities including trikes, bikes and slides to painting books and jigsaws.

We charge £1.50 per session (1st session free) which includes 'half time' refreshments for both adults and children.

Come and join in the fun.
For further information 'phone Abi (01303 862840)

LYMINGE FRIENDS

Wednesday 3rd June 2009 - Social meeting with an Auction. On 10th June we will have a trip to the Secret Gardens in Sandwich.

Wednesday 1st July 2009 - Speaker - Professor Martin Warren - Medical mysteries of a Mad King and a Sad Queen. On 3rd July we are arranging a trip to see Bedroom Farce at the Tower Theatre and on 22nd July there will be a picnic on Tayne Field - weather permitting. Meetings are 10 am - 12 noon in the Methodist Church Parlour. Everyone welcome to come and join in. Entrance £1.50 inc. refreshments. For further details contact Marian on 862015

Are you interested in cricket?

If so, come and join Sibton Park Cricket Club!

We play Kent League cricket on Saturdays, East Kent League and friendly cricket on Sundays, and have several midweek fixtures. The club also has a strong junior section catering for girls' and boys' cricket development. We welcome anyone interested in becoming involved - playing, umpiring, coaching, making tea or generally helping out. Or you can just become a social member – over half our members don't play any cricket at all! We have a well stocked bar in the pavilion with Harvey's real ale on tap in our well stocked cellar, so you can enjoy a cool drink whilst watching cricket in one of the most beautiful locations in Kent. If you would like to learn more, please just drop in to the club on any Friday evening or any Saturday after 4:00pm.

Lyminge Bowls Club

On a warm afternoon why not stroll along to Lyminge Bowls Club and sip a cool drink whilst watching members enjoying their sport. Home fixtures for June are as follows:-

Saturday, 6 June – Tilmanstone bowlers visit us for a friendly game
Tuesday, 9 June – Ladies from Ashford Rail -v- our ladies
Saturday, 13 June – Our visitors this day come from Dover
Sunday, 14 June – Captain's day – an enjoyable day for all club members
Sunday, 21 June – Gateway play a return match at our club
Saturday, 27 June – We host the Ladies' County Finals competition
Sunday, 28 June – Ashford Town come to play against us

In addition, club members will be found playing on the green on Wednesday afternoons and Friday evenings. If you want to have a go, come along and ask.

As usual, on Sunday mornings throughout May and into June we are offering to coach new bowlers on the delights of the game. Come along and give it a try. (Another day could be arranged if necessary.) Call 863495 for further information

Rhodes Minnis Evening Circle

Our A.G.M. was held on the 20th May followed by a fish and chip supper. The committee was thanked for all their hard work and our finances remain healthy. We have a new competition cup given in memory of Joan Tutton who was a member for many years. This was won by Pauline Hodder with Marie Hambrook 2nd, Daphne Andrews 3rd and Margaret Chambers 4th. A cheque is being sent to "Demelza" for the new hospice in S.E. London which has been our chosen charity for the past year. Our speaker on the 17th June will be Owen Leyshon telling us about the wildlife and history of Dungeness. The competition for members is a picture, photograph or ornament of a lighthouse. We meet at Rhodes Minnis Village Hall at 7.30 pm. Everyone will be made very welcome. Marion Hoare 01303 862913

Lyminge Village Hall

At the heart of our busy community the Village Hall offers an excellent venue for up to 200 people and can meet a variety of requirements with its small Committee Room, larger Club Room and the Main Hall with servery and large stage. We have invested heavily during 2008 with a storage extension completed plus new Ladies toilets. With the full stage now available concerts and bands can be accepted. With excellent parking, kitchen facilities and plenty of tables and chairs the Village Hall makes a great place for larger celebrations or charity events. Price example: Friday or Saturday evening £50.00

For full price details and availability just give Jacqui Storey a call on 862044

LYMINGE METHODIST CHURCH HALL HIRE

Hall

1 June to 30 September	£5.50 per hour
£19 per 4 hour session	£35.50 full day
1 October to 31 May	£8 per hour
£26.50 per 4 hour session	£46.50 full day

(includes heating)

Parlour

£5.00 per hour all year with use of
Electric over heaters if required

Overnight stays

1 June to 30 September	£33
1 October to 31 May	£44

(Including heating)

For any enquiries please 'phone 07971 722401



Lyminge Pre-School

'Partnership with parents and carers is outstanding' Ofsted (Oct 2007).

We are a well established pre-school with committed, enthusiastic and friendly staff passionate about providing excellent childcare. We welcome children from all the surrounding villages and towns, offering a breakfast club together with a range of sessions to suit your needs. Located in the village hall we have a fabulous outdoor play area together with spacious indoor facilities. To register your child and find out more please call 01303 863149/01303 862634. Alternatively visit our website www.lymingepreschool.org.uk or email admin@lymingepreschool.org.uk

ETCHINGHILL VILLAGE HALL HIRE FEES

Occasional Users

Standard weekday rates (08h30 to 23h00)

Hourly rate – up to 4 hours	£7.00
1 Session – 4 continuous hours	£21.00
2 Sessions – 8 continuous hours	£42.00
All-day rate	£70.00

Weekend rates (08h30 – 22h00 Sundays) will be £10.00, £30.00, £60.00 and £100.00 respectively

Discounted rates are available for **Etchinghill Residents** who are occasional hirers and for **Regular Users** after 12 months' hiring.

The Committee Room costs £6.00 per session for **Regular Hirers**, £6.00 per hour for **Non-Residents** and £5.00 per hour for **Residents**.

All-day hire for **Weddings, Banquets and Commercial Functions:**

£100.00 for Residents

£200.00 for non-Residents.

For bookings and enquiries, please contact Eileen on **01303 862832**

RHODES MINNIS VILLAGE HALL

Are you looking for a hall in which to hold Practice sessions, private party/function or Meeting?

Rhodes Minnis Village Hall has the capacity to take parties of up to 100 and has kitchen facilities at no extra cost.

Rates:

Sun – Fri £14.00 per session. £34.00 per day
Sat - £20.00 per session. £27.00 evening session
£55.00 per full day.

Session Times:

AM session 8.30am – 12.30pm
PM session 1.30pm – 5.30pm
Evening Session 6.00pm – 11.45pm

A £25.00 returnable deposit is payable in advance.
Electricity will be charged at 18p per unit. Regular users will be given a special reduced rate.

For details contact Mick or Dorothy Athow on **01303 862616**

Sibton Park Cricket Pavilion Club

Having a party? Need a local venue?
Why not take advantage of Sibton Park Cricket Club's lovely pavilion?

We have a bar with club price drinks & friendly efficient staff.

There is capacity for up to 100 guests. For further information or to make a booking please

Contact Lesley Kirk, Tel: 01303 862366

Out and About

A Selection of the photos received of events that have taken place in the last few weeks



The Bouncy Slide and the Mobile Blacksmith complete with working forge and iron work for sale



The sheepdog demonstration which was shown several times with some very unusual 'sheep'



Great to see the Primary School and their teachers contributing to the success of the day.

Lyminge Day

A great day was had by all and over £3,000 was raised for our Village Hall. Not long after Lyminge Day a group of volunteers spent an evening decorating the kitchen and bar area and sprucing up the window frames outside.



Lyminge Guides flying the flag - raising funds for the trip to Switzerland

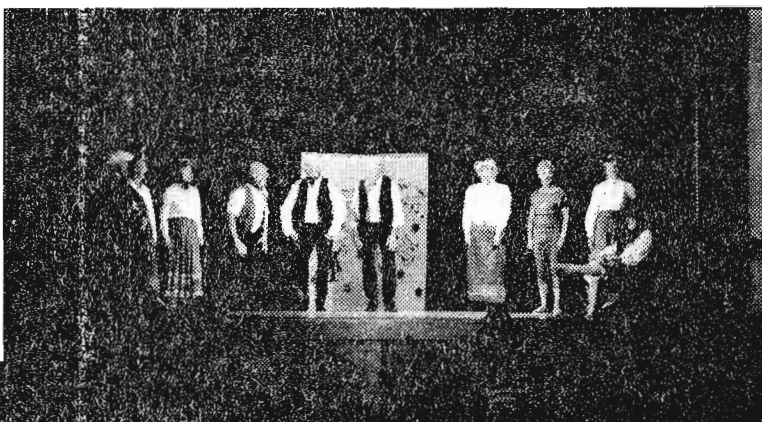


A job I should have volunteered for - judging the Cake Making Competition !

If you have any photos of your group in action or a local event and can add a few words about it, please call 862328. There is no charge for entries in Out & About, but space is limited!

Lyminge Dramatic Society

VARIETY 2009

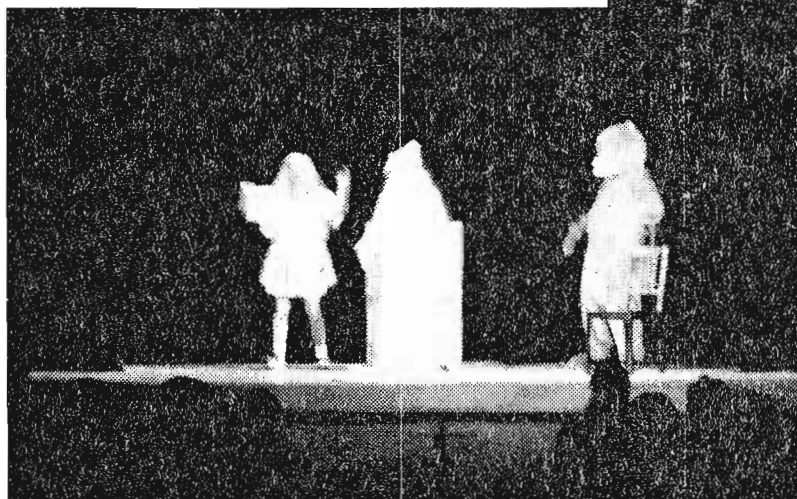


What a Show !

Two hours of pure entertainment with acts ranging from an Andy Pandy sketch with an up to date twist, to juggling, to singing, to a Secret Service sketch complete with loud gunshot!

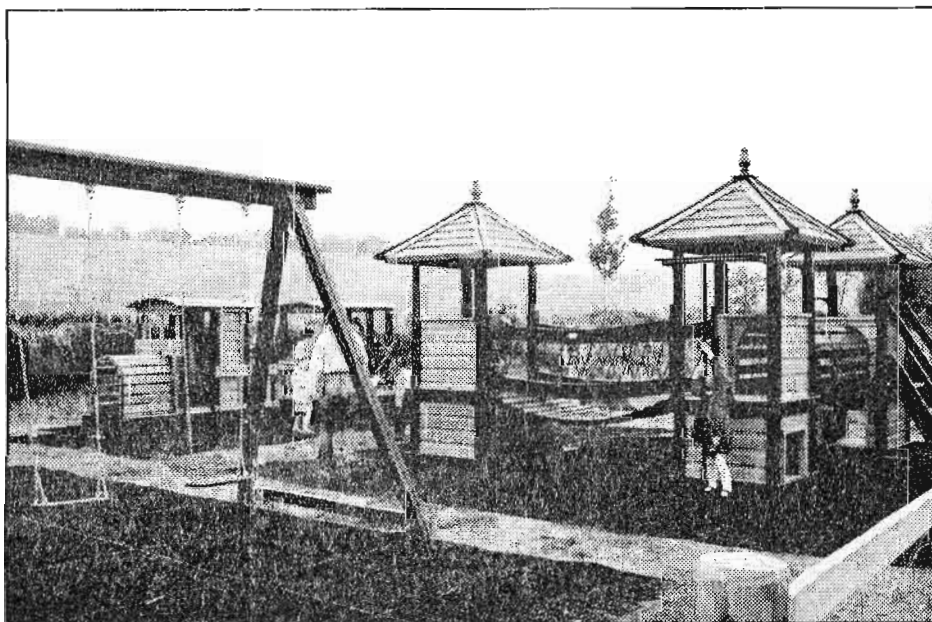
All this at three different locations - Saltwood, Lyminge and Elham!

The next production is the pantomime **Babes in the Wood**



New Junior Play Area

Lyminge Youth Action are pleased to announce the installation of the new Junior Play Area on Jubilee Field. LYA would like to express their thanks to members past and present who have assisted to create this new facility, which hopefully will be enjoyed by everyone. LYA would particularly like to thank The De Haan Family Foundation, Cllr Susan Carey and the Shepway District Council Community Chest



Fund for their generous donations for this part of the fantastic Jubilee Field Project."

Ghosts !!

Do you know of any stories about ghosts in Lyminge ?

If you do please contact The Lyminge Historical Society as they are hoping to produce a publication about our local ghosts. Contact either 862699 in the evenings or drop your story off at Korf House, opposite the Coffee Shop.

They are also looking for facts about Local Traditions that may have died out now but which took place in the past.

SCRUBBERS - Est. 1988

THE HOME AND COMMERCIAL CLEANERS

One off, regular or moving day 'Blitz'

Oven cleaning - Ironing

Carpet cleaning and more...

For a friendly and reliable service

Free Estimates Tel: 01303 862249

FRESHLOOK GARDENS

Garden design. Regular lawn mowing service available. General garden work undertaken. Rubbish cleared. Overgrown gardens cleared. Winter pruning and hedge cutting.

For free quotation ring Geoffrey Hogben. KCC registered

Telephone 01303 844680

Mobile 07866 091633

www.PresentingElectrical.co.uk

Industrial - Commercial - Domestic

Electrical work - 17th Edition Certified (BS7671: 2008)

Installation, Fault Finding, Inspection & Test, PATs

**DIY SOS & Emergency call out - FREE
QUOTATIONS**

Call - Local: 0845 224 6438 Mobile: 07974 411224

Wilco Plumbing & Heating

Central Heating Installations & Repairs

Gas & Oil Boiler repairs & replacements

LPG, Solar & Unvented hot water specialist.

Landlords Gas safety Inspections

Local Experienced Engineer.

Registered with the Institute of Plumbing

Gas Safe Registered

KCC Trading Standards Approved

01303 862173 07860 452640

BEAVER BUILDERS

Jon Daughters

Conversions

Driveways

Plastering

Roofing

Patios

Decorating

Carpentry

Drains

Plumbing

FREE ESTIMATES

Tel: 01303 863371

Total garden care for all your needs

TIM MILLETT

Grass Maintenance

General Gardening

Fencing Repairs & New Installations

Small & Medium Size Tree Work

Turfing

Hard & Soft Landscaping

Free Estimates

Fully Insured

01303 863676

Mob: 07752 880583

Email: info@tmhorticulture.co.uk



heating Ltd

Riverside Trading Estate West Hythe Road Hythe CT21 4NT

01303 260197

For all types of heating needs - Rayburn range cookers

Plumbing - Central Heating - Multi-fuel stoves

Contact Dennis Huntley on 862343 or

VISIT OUR SHOWROOM

OFTEC & CORGI Registered - Qualified Tradesmen

There To Care

Here to make your life easier. We are a company that treats everybody with dignity and respect striving to make a difference to people's lives.

CRB checked

Companionship via outings

Insured

Assistance with light meals

First aid qualified

Shopping

NVQ qualified

Hospital appointments etc

Ross Butcher: 01303 862410 or 07967 342226

Eddie Brooks: 07766 196217 Theretocare@hotmail.co.uk



OSCAR PET FOODS

QUALITY PET FOODS AT VALUE FOR MONEY PRICES

DIET TO SUIT ALL DOGS

WILDBIRD FOOD AND PEANUTS

FREE HOME DELIVERY

01303 862200

WWW.OSCARS.CO.UK

Jackson Plumbing

Property Maintenance

Complete bathrooms and tiling

No job too small. Special rates for OAP's.

Telephone: Home/evening 270691

or day time 07773 089398

(please note new mobile number)



Bed & Breakfast

Own facilities. en-suite

Bridge Cottage Elham

Chris & Alison

01303 862933

www.elham.co.uk

"YOUR PARISH NEEDS YOU!"



The Lyminge Association is looking for volunteers to help organise and run events during the year.

Can you spare an hour on a regular or ad hoc basis during the year? If so, please call Mike on 862073

China China
 Eat As Much
 As You Like.
 Sun - Thu £13.95
 Fri & Sat £14.95
 Weekend 10pm £8.00
01303 863288



Personal Computing

For straightforward I.T. advice, solutions and training

Contact:

Steve Ashman
 862869

sra@ashman-consulting.co.uk

LYMINGE HARDWARE

4 Station Road
 Lyminge 862932

Hardware, China, DIY, Calor Gas, Paraffin, Coal, Wood and Timber cut to size, Paint, Wild Bird Food, Plumbing, Electrical, Salt for Dishwashers and Water Softeners, Building Sand, etc.

The list goes on and on, please call in and see us.

Auto Economy Centre

**Fully equipped Mechanical Repair & Service Centre
 with the latest diagnostic equipment**

01303 863656

Orchard Garage, Canterbury Rd, Etchinghill

www.autoeconomycentre.com

N.P.C. Domestic Services

Service and Repair of washing machines, tumble driers, dish washers, cleaners and small electrical work

For a prompt and friendly service

Telephone Neil Collard on 248887

Mobile 07798 716044

Etchinghill Golf, Canterbury Road, Etchinghill

Lunches served seven days a week, open to the public. Every Sunday we run a carvery from £8.95 (special prices for children).

We also accommodate weddings, parties and christenings. New all inclusive wedding pack @ £35.00 to include drinks on arrival, three course wedding breakfast, wine at the table, sparkling wine for the toast, evening disco and evening buffet for your day time guests.

Etchinghill is part of Pentland Golf Group, also at Boughton, Faversham and Austin Lodge, Dartford.

All enquiries telephone 01303 863863 or email deb@pentlandgolf.co.uk
www.pentlandgolf.co.uk



**Regional Specialists
 in Village & Country
 Property for East Kent**

OPEN 7 DAYS



Browns
 Chartered Surveyors & Estate Agents

135 Canterbury Road Bank Buildings
 Hawkinge High Street, Elham
 01303 892000 01303 840422
www.brownscountryproperty.co.uk
info@brownscountryproperty.co.uk

Mark Beer

Landscaping – Groundwork – Trenching

Patios – Paving – Decking – Driveways

Sand Schools – Drainage

Mini Digger Hire – Self Drive or Operated

CITB Registered – Fully Insured – 20 years experience

Phone/Fax 863893 or 07949 291742.



D. SCRIVENS PLUMBING & HEATING

Oil Fired Boiler Installation,

Commissioning, Service and Maintenance.

Unvented Hot Water Systems Solar Water Heating

Central Heating Water Softeners Bathrooms Showers En suites

Approved 'Aqualisa' Installer

WATER INDUSTRY 'APPROVED PLUMBER'

FULLY INSURED

Mobile: 07810 897076

Email: scrivensplumbing@aol.com

**City
 Guilds
 Qualified**

K & M LEWSEY LTD

PLUMBING & HEATING ENGINEERS

ESTABLISHED 1969

REGISTERED PLUMBER

GAS ACOP APPROVED ENGINEERS

TELEPHONE: 01303 264535

**MANNED OFFICE,
 DAYTIME MONDAY TO FRIDAY**



Filehurst Associates

Document/Archive Storage

Household Storage Units

Commercial Storage

01303 239990

www.filehurstassociates.co.uk



Key Spaces

Kitchens & Bathrooms

Quality kitchen and bathroom specialists.

We offer a first class service to all our customers for design, installation and beyond.

www.keyspaces.co.uk

Tel: 01233 501 591

Email: info@keyspaces.co.uk

Mersham le-Hatch business village, Hythe Road, Ashford, TN25 5NH

YOGA & RELAXATION CLASSES

Local friendly adult classes suitable for all abilities

Mon 7pm - Rhodes Minnis Village Hall

Tues 10am - St Paul's Church Hall, Sandgate

Wed 10am & Thur 7pm - Elham Village Hall

Thur 10am - Etchinghill Village Hall

Tel: Chris Yorke on 01303 863196

or email yorkes@yoga4freedom.co.uk

For more info visit www.yoga4freedom.co.uk



Wholistic Works, Podiatry & Complementary Health Clinic

Tel: 01303 863359 e-mail: info@wholistic-works.co.uk

2 Station Road, Lyminge, Folkestone, CT18

Treatments available include a full range of Podiatric services by Mrs Lyle Arnold B.Sc. (see www.wholisticworkscinic.co.uk for more details) and a range of Complementary Health Therapies including; Aromatherapy, Hopi Candles, Reflexology and Reiki.

An Osteopathic clinic with Mr Adam Price B.Sc. (Ost), is also available on Thursdays. Mrs Arnold and Mr Price are also at 26 Cheriton Gardens, Folkestone.

Consultations by appointment only

Mick Johnson

Plumber

30 YEARS EXPERIENCE

Telephone 862897

HILLARYS BLINDS LTD

For your Office Home or Conservatory

- ❖ unbeatable choice
 - ❖ expert advice
 - ❖ free quotation
 - ❖ select at home
 - ❖ quoted price includes fitting
 - ❖ daytime, evening or weekend appointments
- GORDON BOUCHER**
01303 862949



HONEST JOHN NEWING

Portable Electrical Appliance Testing (PAT). DIY Handyman, General

Maintenance and Gardening. Fully Insured, reliable & Trustworthy. No Job Too Small, call for a free quote 01303 862873 or 07758 326824
Email: johnspattesting@googlemail.com

New Art Group

**2 - 4pm Thursdays
Mixed Media**

**Methodist Church Hall,
Church Road, Lyminge**

For further information call

Nikki on 01303 812593

Manor Veterinary Clinic

Manor Veterinary Clinic has moved to:

Shearway Road, Shearway Business Park, CT19 4RH

01303 273203

New premises - same care

Lyminge surgery: Methodist Church Hall - Mon, Wed & Fri.

STERRY FUNERAL SERVICE

CLIVE STERRY OFFERS A LOCAL FAMILY OWNED FUNERAL SERVICE

Help and advice 24 hours a day

Traditional and Green funerals

Home visits

Pre-paid Funeral Plans & Memorials

Always at competitive prices

Call 272525, 93 Cheriton High Street

Also Lyminge 862540 after 6pm

***The* Ovencleaners**

Kent's leading Domestic Oven Cleaners

Non Caustic, Fresh solutions every clean

Ovens, Ranges & AGA's

Hobs, Extractors, Microwaves & BBQ's

Tel: 0800 328 9342 for your free quote

Local Representative Geoff Cheshire

Red Dragon I.T Ltd.

'Computer Specialists'

We offer the 'One Stop Shop' for all your computer requirements.

We now offer training in groups and one to one.

Our services include repairs, bespoke PCs, maintenance, peripherals, consumables and web design.

www.rdit.co.uk 01303 723456

JUBILEE FARM SHOP

Rhodes Minnis, Telephone 862317

Organic eggs. Fresh fruit and vegetables.

High quality meat at reasonable prices.

Jubilee organic Aberdeen Angus beef.

Jubilee Organic Lamb (whole or half to order)

Large range of organic produce.

OPEN 9am-5pm Mon - Sat.

LYMINGE FOOD AND WINE - 01303 862225

We are offering you...

Household goods * News & Magazines * Wines & Spirits

Beers * Soft drinks & Confectionery * Bakery * Chilled &

Frozen Food * Flowers * Fresh Fruit & Vegetables * Cash

Machine * Western Union Money Transfer

Pay Point for (Gas, Electricity, Council Rental, TV Licence,

Congestion Charge, Holidays, Mobile Top-up).

We are always running offers.

DILTON

MINI SKIP HIRE

Ballast, Hardcore, Sand and Topsoil Supplied
REGISTERED WASTE CARRIER

Telephone: 812448 or
Mobile 07799 433754



M. J. Athow

BUILDER & DECORATOR, EST. 1965
GENERAL MAINTENANCE
Member of the Federation of Small Businesses
Qualified and Insured. Free estimates
Telephone 862616 Mobile 07976 306665
Email: m.j.athow@live.co.uk
Website: <http://mjathow.spaces.live.com>

AIR LINK CARS

(You pack up, we pick up)



Airport, Seaport & Long Distance Travel Specialists.
The Family Run Business where service really counts
Estate cars and People Carriers
Fixed price 24hrs a day. No extras.
Written Confirmation of booking.

For the Easy Airport Link, Think Air link!
01303 862704 - 07753 760897

WILL WOODBRIDGE

Carpenter/small works builder
With years of experience

Telephone 01303 863062

HAXTONS

TOWN AND COUNTRY ESATE AGENTS

8 Station Road, Lyminge

TEL: 01303 863393

www.haxtons.co.uk

Specialising in Village and country properties
Free no obligation valuations

OPEN 7 DAYS



SEATHWAITE BOARDING CATTERY LTD.

Supporting Rhodes Minnis Cat Sanctuary
GREEN LANE, RHODES MINNIS, CT4 6XU
TEL: 01303 862243 (Registered charity 262245)



ONLY CATS BOARDED, IN QUIET COUNTRY LOCATION
Individually heated chalets. Single cats £5.50 per day, a reduction for 2 or more cats. All cats boarded with us must have current vaccinations against cat flu & feline enteritis.

All profits from the boarding cattery go to support homeless cats in the Sanctuary.

RHODES MINNIS CAT SANCTUARY
has a wide variety of cats available to caring homes.

Alan J. Boughton

Small Works Builder

All aspects of building work undertaken

40 years experience

Telephone: 862075

BRIAN HEWETT

Painter and Decorator

Property Maintenance

Telephone for free quotation and advice without obligation

01303 862150

I have been painting and decorating for 45 years,
and still enjoy it!

Auto Tyre Centre

Fully equipped tyre centre with laser wheel alignment

01303 863656

Tyres at prices that are hard to beat

Orchard Garage, Canterbury Rd, Etchinghill

www.autotyrecentre.com

R. B. BUILDING SERVICES

General Maintenance, Painting, Carpentry, Plumbing

Upvc fascias and guttering

Fully Insured

For a Free quote please ring Roy Bowling on
Home Tel: 01303 863267 – Mobile 07947 132319

MAXTED CONSTRUCTION

We are specialists in House Refurbishments, Extensions, Electrical works, Plumbing, Roofing, Carpentry, Patios, Driveways, Conservatory Installations and most forms of Property Maintenance.

Contact us now for a free no obligation Estimate on:

Freephone: **0800 083 6469**, Tel: 01227 709606

Email: office@maxtedconstruction.co.uk

or contact us via our website www.maxtedconstruction.co.uk

T. M. McIntyre Builders

All building projects undertaken

Residential & Commercial

Local Family Business

Established for over 20 years

Please call for a friendly and free no obligation estimate

Telephone Paul McIntyre 01303 863 257