



THE LYMINGE NEWSLETTER

For the communities of LYMINGE, ETCHINGHILL, RHODES MINNIS and POSTLING

<http://www.lyminge.org.uk/>

November 2009

Produced by
THE LYMINGE ASSOCIATION

Saint Nicholas Fayre

Hog Roast ~ Christmas Stalls
Children's Activity Room ~ Cards
Decorations ~ Crafts ~ Toys ~ Cakes
Puddings ~ Pickles ~ Pies ~ Tarts

Lyminge Village Hall

Saturday 21st November 2009

11.00am until 3.00pm Come Along and Enjoy

A Traditional Village Christmas Fayre



Lyminge Dramatic Society

Babes in the Wood

A pantomime by Brian Edmond

Directed by Matt Nixon

1st - 5th December 2009

7.45 pm. Matinees Fri. 4th:- 4.45 pm & Sat 5th:- 4.00 pm

Lyminge Village Hall

**Tickets available 7th November from Laing Bennett Estate Agents,
Lyminge**

Adults £7, accompanied children £2

Senior Citizens - limited number of free tickets available for Tues 1st from Box Office

LYMINGE PARISH CHURCH SERVICES

Sunday 1st November	All Saints Day 8.00am Holy Communion 10.30am WOW service
Monday 2nd November	7.00pm All Souls Service
Wednesday 4th Nov	7.00pm Holy Communion (short said) 7.30pm Open House (Bible study) 9.15pm Wednesday Silence
Sunday 8th November	Remembrance Sunday 10.00am Remembrance Day Service 10.45am Service of Remembrance at the War Memorial
Wednesday 11th Nov	10.45am War Memorial Service of Remembrance 7.00pm Holy Communion 7.30pm Open House (Bible study) 9.15pm Wednesday Silence 2.00pm Pram Service
Thursday 12th Nov	2.00pm Pram Service
Sunday 15th November	10.30am Family Communion 6.30pm Evensong
Wednesday 18th Nov	No Holy Communion 7.30pm Open House (Bible study) No Wednesday Silence
Sunday 22nd November	8.00am Holy Communion 10.30am Holy Communion
Wednesday 25th Nov	No Holy Communion 7.30pm Open House (Bible study) No Wednesday Silence
Sunday 29th November	10.30am Matins

Sunday Afternoon Tea - Nailbourne Court - 1st November

These teas are held on the first Sunday of the month in the lounge from 3 - 5pm. If you would like to come but need a lift, please contact Sue Rawlings on 862221

Craft Afternoons - 2pm - 4pm

Tuesday 3rd Nov - Wentworth Close Lounge

Tuesday 10th Nov - Nailbourne Court Lounge

Tuesday 24th Nov - Roseneath Ceramics, Rhodes Minnis

Everyone is welcome to join in on these afternoon activities, for more information please contact Lynne on 863010

Coffee morning - Wentworth Close - 9th November

Coffee mornings are held on the second Monday of each month from 10.00am to 11.30am in the lounge. Do join us as we meet with the residents of Wentworth Close for coffee and a chat.

Mothers Union - 11th November

The next meeting will be at 10.30am in the Methodist Parlour when Rev Vanessa Ashman will give a talk on 'The meaning of Advent'. For more information contact Sue Rawlings on 862221

Pram Service - 12th November

Please note that the pram service has now resumed. This is a short pre-school friendly service for babies and toddlers and also a chance for their carers to get together and chat over refreshments afterwards.

For more information contact: Trish on 862151

Bereavement Support Lunch - 19th November

These lunches are held on the 3rd Thursday of each month at 12.30pm in the Coach and Horses. The meal comprises two courses followed by coffee, at a cost of £6.50 per head.

All are welcome and transport can be arranged. For more information please contact Lynne on 863010

LYMINGE METHODIST CHURCH

Visitors are very welcome to join us at our weekly Service at **11am** and invited to share fellowship afterwards with a cup of tea/coffee

Preachers for November:

1st Nov.	All Saints Day - Rev Barry Armson (Valley Service) incl Holy Communion
8th Nov.	Remembrance Day United Service at Parish Church
15th Nov.	Mrs Sue Brockman
22nd Nov.	Mr Dudley Shipton
29th Nov.	Mr David Foreman
6th Dec.	Rev. Derek Hancock incl Holy Communion

Monday Fellowship 2.30 - 3.30pm weekly

Wednesday 25th November
"Reflections"
Alternative, less formal worship

For Baptisms, Weddings or Funerals, please
contact the Minister, Rev Barry Armson,
on 01303 266281

Rhodes Minnis Church

This small Chapel in beautiful countryside
surroundings holds a weekly Sunday Service
normally at 9.30am

Followed by coffee and biscuits
A warm welcome is extended to any visitors

The Preachers for November:

Nov. 1	<u>NO</u> service at Rhodes Minnis but a joint Valley service at Lyminge Methodist at 11am
Nov. 8	Rev. Derek Hancock

Nov.15 *3pm* Re-dedication service for new
extension - Rev. Barry Armson and
Rev. David Adlington (the new vicar
at St Mary's, Elham)
Please note **NO** morning service that
day. Refreshments will be served at
the close of the service and all are
welcome.

Nov.22	Mr. Dudley Shipton
Nov.29	Mr. David Foreman

POSTLING CHURCH SERVICES

Sunday 1st November	Family Communion 9.30am
Sunday 8th November	Morning Prayer for Remembrance Sunday 9.30am
Sunday 15th November	Holy Communion 8am
Sunday 22nd November	Family Service 9.30am
Sunday 29th November	No Service

L.E.T. (Lyminge Ecumenical Team)

Prayer Box. Please place any prayer requests concerning a bereavement or illness in the prayer box at Lyminge Post Office. It would help to have the name of the person you are praying for but not necessarily your name.

These will be included in Sunday worship in both churches and added to private prayer life.

Forthcoming Village Events

Does your event clash? We would like you to give us details of your future events for this page. This will help us all plan for our own events and help spread them throughout the year. There is no charge for entries on this page. For entries into future issues please phone **Gillian on 863232**.

One Off Events In Forthcoming Months		When and Where?	Contact Details	
3 Nov	"The Pub That Never Was" Talk Lyminge Historical Society	7.45 Lyminge Methodist Church Hall	840419	Derek
5 Nov	Bonfire Night and Fireworks	7:00 Lyminge Village Hall	862928	Honor
7 Nov	Etchinghill Residents' Association AGM	Etchinghill Village Hall	862873	Barbara
7 Nov	Christmas Fayre	Lyminge Village Hall	862928	Honor
7 Nov	Race Night	7:00 Etchinghill Village Hall	862873	
8 Nov	Remembrance Sunday Joint Service	Lyminge Parish Church	863182	Andre
14 Nov.	Lord Whisky Autumn Bazaar	10:00 Lyminge Village Hall	862622	Margaret
14 Nov	St Cecilia Day Concert by Cantores	7:30 TBA	01233503686	Jenny
14 Nov	Coffee Morning for Help our Heroes	10:00 Postling Church	863536	Pat
21 Nov	St. Nicholas Fayre	11:00 Lyminge Village Hall	863182	Derrick
28 Nov	Christmas Fayre	Abbeyfield House	862564	Rosemary
28 Nov	Christmas Lights Switch On	Lyminge Village	862238	Adrian
1 – 5 Dec	Babes in the Wood	Lyminge Village Hall		
2 Dec	Rhodes Minnis Methodist Lunch	1:00 Rhodes Minnis Village Hall	862865	Daphne
5 Dec	Christmas Farmers' and Craft Market	10:00 Etchinghill Village Hall	862832	Bryan
9 Dec	Railway Swing Band	6:30 Lyminge Village Hall	862928	Honor
22 Dec	Parcel Delivery	Around the Villages	862015	Marian
Dec 31	New Year's Eve Party	8:30 Etchinghill Village Hall	862028	

Weekly Events Dates 2009		When and Where?	Contact Details	
Mondays	Etchinghill Open House	10:00 Etchinghill Village Hall	863418	Rosemary

Monthly Events Dates 2009		When and Where?	Contact Details	
1 st Tue.	Lyminge Historical Society	7:45 Lyminge Methodist Hall	840419	Derek
1 st Wed.	Lyminge Friends	10:00 Lyminge Methodist Parlour	862427	Mavis
3 rd Wed.	Rhodes Minnis Evening Circle	7:30 Rhodes Minnis Village Hall	862913	Marion
1 st Sat.	Farmers and Craft Market	10:00 Etchinghill Village Hall	862832	Bryan
2 nd Sat	Coffee Morning	10:00 Postling Church	863536	Pat
4 th Sat. ¹	Beetle Drive	7:00 Rhodes Minnis Village Hall	862616	Mick
3 rd Sun.	Parish Walk	10:00 Lyminge P.O. Car Park	862015	Richard
3 rd Tue.	Etchinghill W. I. Meeting	2:30 Etchinghill Village Hall	862141	Dottie
Last Mon.	Parish Council Meeting	See Parish Notice inside Newsletter	862184	Pam

Copy deadline for next month's newsletter is the 18th of the month

Call Jean Howard on 01303 862488 or email in word doc. format to jean.howard1@talktalk.net. Money must be received before articles can appear in the newsletter. A paper copy and money can be left at the Lyminge Newsagents or the Lyminge Library. Charges are as follows: Business adverts - £8.00 per month or £80.00 per year (12 issues for the price of 10). Charity adverts - £1.50 per month or £15.00 per year (12 issues for the price of 10). Please make cheques payable to The Lyminge Association

¹ Beetle Drive will be held on 4th Sat., except in December when it will be held on the 2nd Sat. of the month.

LYMINGE ASSOCIATION NEWS

A reminder to everyone lighting up time for our Christmas lights will take place on **Saturday 28th November**. Laing Bennett have kindly agreed to have the large Christmas tree outside their premises and the proceedings will commence at 4.00pm when children from Lyminge Primary School will entertain us with carol singing followed by the Lyminge Hand Bell ringers. It is then hoped that all the Christmas trees in the main road can be synchronised to light up together. Mulled wine and mince pies will be available served by the Lyminge Association. We hope as many as possible will join us. If there are any new residents in Station Road or Canterbury Road who would like to erect a small Christmas tree on the front of their house, The Lyminge Association have a few brackets and lights available and trees will be supplied.

Please contact Adrian Willcox if you are interested on 862328

Father Christmas will once again be delivering parcels in and around the village on 22nd December. Further details will be in the December newsletter but perhaps we should all start thinking about who deserves a little present from Father Christmas!

Dates for our Diary

Monday Fellowship in November
In The Methodist Church Parlour
Weekly 2.30 – 3.30pm

2nd November - Readings and Music

9th November - Games

16th November - Mr Alan Ewart-James

"Experiences as Mayor & Speaker of Hythe"

23rd November - Quiz

30th November - Poetry and Readings

All are welcome

Meetings end with refreshments, with a retiring collection taken towards expenses and various charities.

Further information from
Mary Blanch 01303 863832

Pilgrims Hospices IN EAST KENT

November 2009

Wed 4th November Our Christmas Fayre and coffee Morning. Come and meet Father Christmas, tell him your wish for The festive Season.

All the usual stalls, Raffle, Tombola, many Christmas Cards and Cake stall.

The Mayor Mrs Janet Andrews will be opening the event.

9.30am onwards at Holy Trinity Church Hall, Sandgate Road, Folkestone.

Advance Notice

The Christmas Raffle will be drawn at our coffee morning on Wednesday 2nd December

Lyminge Village Hall **BONFIRE AND FIREWORK DISPLAY** **Thursday 5th November**

Bonfire at 7pm followed by Grand Firework Display

Soup, BBQ and Drinks from 6.30pm

Adults £4.00, Children £2.00, Family Ticket £10.00

Available at the gate

A Lyminge Village Hall Fundraising Event.

Reg. Charity No 281845

Christmas Fayre

Saturday 7 November 2009
In Lyminge Village Hall

Starting at 11:30 am
Refreshments available
Get some ideas for Christmas

For further details call:
Honor 862928 or Niki 862530

Organised by the Village Hall Management
Committee Reg Charity 281845

Race Evening

To be held in
Etchinghill Village Hall
On Saturday 7th November
Bets for the first race – 7.00pm
Please arrive beforehand

Tickets £5 per head to include a fish and chip
supper – Bring your own drinks

Phone 862873 or 863495 to book your tickets
Numbers limited – so book early to avoid
disappointment

Elham Valley Branch **Of the** **Royal British Legion**

The Service of Remembrance will be held
At Lyminge Parish Church on
Sunday November 8th 2009 at 10am

The Elham Valley Branch Standard will be on
parade

On **Wednesday 11th November** the Rector will
hold a Service of Remembrance at Lyminge War
Memorial at 10.45am where children of Class 6 will
lay crosses in memory of all those who had died in
the two wars and whose names are on the
memorial

Rhodes Minnis Toddler Group

COFFEE MORNING

Rhodes Minnis Village Hall
Thursday 12th November
10.15am – 11.45am

Raffle and sales table
Everyone welcome

Stowting WI Christmas Fair

The Peace Rooms, Stowting

Saturday 14th November
10am – 12.30pm

Stalls of cakes, craft, books, raffle and a lovely variety of preserves, many as mother used to make
Gift stall, children's face painting, etc
Light refreshments

In Aid of The Lord Whisky Sanctuary Fund

Registered Charity: 2843483
Park House, Selling Minnis, Canterbury, Kent CT4 6AN
Tel: 01303 862622 Fax: 01303 863007
Website: www.lordwhisky.co.uk Email: lord.whisky@btinternet.com

Lyminge Autumn Bazaar
Saturday 14th November 10am – 1pm at Lyminge Village Hall

Christmas Cards and Gifts Stalls ~ Refreshments
Sugar Craft Demonstrations ~ Lyminge Hand Bells
To book a table (£10), please phone 01303 862622

Christmas Bazaar & Blessing Service
Saturday 5th December 10am – 1.30pm at Bossingham Village Hall

Christmas cards and gifts. Hot and cold refreshments. Grand Prize Draw

Craft Stalls (£10). To book please phone 01303 862622
Followed by a short service and Blessing of the Animals at 2pm.
Service and Blessing to be conducted by The Rev. Margi Walker
We are delighted to be joined by Canterbury's Spirit of Song

~~~~~

**Come and visit the  
Lord Whisky Tearooms & Gift Shop**

### NEW!! Monday Specials

Lunch from our homemade specials board only £4  
Choose from Liver and rich onion gravy & vegetables. Cottage Pie & vegetables. Chicken and Leek Bake & vegetables, Macaroni Cheese & salad Breakfast Muffin or Soup & Roll

**Festive Christmas Menu available throughout December**

Open evenings by arrangement for groups of 20 or more  
For further details phone 01303 862349

## *Cantores Dominicae*

Present

A Concert for St Cecilia - A programme of English music

at The United Reformed Church, Folkestone  
on Saturday 14th November at 7-30

Musical Director: Stephen Yarrow

Tickets £6.00 available at Laing Bennett Estate Agents  
(formerly Haxtons) and on the door.

All enquiries to:- Judy Abate on 01303 862358

Future programmes:

Carol Concerts – 12th December at Elham Church and  
16th December at Stowting Church

## Lyminge Youth Action AGM

Monday 16<sup>th</sup> November 2009  
7-8.30pm at Lyminge Methodist Parlour

Please join us to hear reports from the past 12 months and our future plans regarding the excellent facilities at Jubilee Field. All welcome and refreshments will be served. We are always happy to hear from people who might be interested in getting more involved, so give us a call and have a chat before the meeting if you like or just come along and hear more on the evening. We look forward to seeing you there!

**Tel: Jane Seymour 862142  
Or Garv Harrison 07977982185**

## Elham Farmers' Market

The Rose and Crown courtyard, High Street, Elham

**Next markets:**  
**Sunday 18 and 22 November**  
**10.00 to 12.00**

Fresh, seasonal, locally produced food (vegetables and fruit, meat, game, eggs, fish, cheese, bread and cakes, pies, and more). Check on [www.elhamfarmersmarket.co.uk](http://www.elhamfarmersmarket.co.uk) for future dates, list of traders, latest news and recipe ideas.

## Newington Village Hall

Registered Charity No. 302812

**Beetle Drive**  
**Friday 20<sup>th</sup> November**  
**Starts 7.30pm**

Admission £1.  
Tea, Coffee and soft drinks available

Please come and support Lorraine and Danielle who are running the London Marathon in aid of The Foundation for the Study of Infant Death

**Quiz Night**  
**Etchinghill Village Hall**  
**Saturday 21<sup>st</sup> November – 7pm**

Teams of up to eight people  
Tickets £10 per person  
Includes Fish & Chip Supper  
Bring your own drinks

Please phone 01303 864316 or 07967923001 to book your tickets  
Or pop by the Nook, Canterbury Road, Etchinghill where both Danielle and Lorraine will be happy to provide further information

If you cannot join them on this fun filled night but would still like to support them with a donation you can do this online at [www.justgiving.com/danielle-thorpe-gray](http://www.justgiving.com/danielle-thorpe-gray)

**Rhodes Minnis Cat Sanctuary**  
Registered Charity No 262245

**Christmas Fair**  
**Saturday 21<sup>st</sup> November 10.00am – 1.30pm**  
Holy Trinity Church Hall  
Sandgate Road, Folkestone

Presents for you and your cat  
Cards\*Books\* Cakes\* Jams\* Bric-a-Brac  
Tombola  
Refreshments Teas and Coffees

**Entrance Free**

All proceeds go to feed the homeless cats at the sanctuary over the Christmas period

**Rhodes Minnis Village Hall**  
**Beetle Drive**  
**Saturday 28<sup>th</sup> November**

Come along and join us at  
Rhodes Minnis Village Hall

Starts at 7pm,  
Adults £2.00 – Children 50p  
Includes refreshments  
There will be a raffle

**Abbeyfield in Lyminge**  
**28<sup>th</sup> November**  
**Christmas Fayre**

Bring the children to meet Father Christmas and help us raise some money for our Christmas Party  
Contact Rosemary on 862564 for more information

**Lyminge Historical Society**

**Tuesday 1<sup>st</sup> December at 7.45pm**  
At  
Lyminge Methodist Church Hall

**A talk about**  
**Stage Coaches in Kent**  
by David Thomas  
Non-members welcome

**Farmers' and Craft Market – 2009**

**At Etchinghill Village Hall**  
**Saturday 5<sup>th</sup> December**  
**Last Market of the Year**

From 10am – 12.30pm

Contact Bryan 01303 862832 or  
Anne 01303 863174

**LYMINGE VILLAGE HALL**

**By Popular Demand**  
**The Return Of**

**THE RAILWAY SWING BAND**  
**With Guest Singers**

**CHRISTMAS CONCERT**

On

**Wednesday 9 December at**  
**7:30pm**

*DOORS AND BAR OPEN AT 6:30pm*

**£10.00 per person**

**Elham Valley and Wye Lions Club -**  
**HELP PLEASE!!**

Sorry for mentioning the F word and the C word so early this year, but yes it will soon be time for Father Christmas!

The Lions' Father Christmas float will be visiting villages in the area in December, including Lyminge Sat 19<sup>th</sup>; Sellindge Sun 6<sup>th</sup>; Stelling Minnis Mon 7<sup>th</sup>; Etchinghill & Postling Tue 8<sup>th</sup>; Barham Sat 12<sup>th</sup>; Hawkinge 15<sup>th</sup> to 18<sup>th</sup> and Elham Mon 21<sup>st</sup>. We would love to have some help with our door to door collections. It's just a couple of hours or so and it's great fun. We are raising funds for local elderly people and other local good causes. If you can help with any one of the above, please ring Neil on 01303 862837 or 893314.

**New Years Eve Party**

**Etchinghill Village Hall**  
**8.30pm – 1am**  
Everyone welcome

Adult £7.50  
Children 8 – 16 £5.  
Children under 8 yrs FREE

Decorated tables, glasses and tableware supplied  
Disco to suit all tastes  
Dress code casual to posh frocks

Call and reserve your tickets now (limited number)

Payment in full please two weeks prior to event  
Call 863418 (evening) or 862028

### **LYMINGE FRIENDS**

**Wednesday 4<sup>th</sup> November 2009** - Christmas Wreath making followed by our Bring and Share Christmas Lunch.

On **18<sup>th</sup> November** we will have a Christmas shopping and Lunch trip to the Bybrook Garden Centre.

**Wednesday 2<sup>nd</sup> December 2009** - Social morning with Secret Santa, games and homemade mince pies.

On **31<sup>st</sup> December** we will have a New Year's Eve Lunch in China China. We are planning a Panto trip as well, details soon.

**Wednesday 6<sup>th</sup> January 2010 - NO MEETING.**  
Instead, meet up for Christmas Lunch in the Rose and Crown in Stelling Minnis.

Meetings are 10.30 - 12.30 in the Methodist Church Parlour. Everyone welcome to come and join in.  
Entrance £1.50 inc. refreshments. For further details contact Marian on 862015

### **LYMINGE BABY AND TODDLER GROUP**

Calling all parents, grandparents or carers with children under school age at a loose end on Tuesday mornings. We meet every week (during term time) at the Methodist Hall in Lyminge between 10.00am - 12 noon to give the children a chance to play and interact with others the same age.

We offer a wide range of craft and play activities including trikes, bikes and slides to painting books and jigsaws.

We charge £1.50 per session (1<sup>st</sup> session free) which includes 'half time' refreshments for both adults and children.

Come and join in the fun.  
For further information 'phone Karen 01303 863274

### **RHODES MINNIS TODDLER GROUP**

We are a small group open to mums, dads, grandparents and carers who meet on Thursday mornings at Rhodes Minnis Village Hall from 10 am – 12 noon during term time.

Come and have a tea/coffee while having a friendly chat as your child plays. £1.50 per session (first session free)  
'Phone Elaine on 01303 863096 if you need more information

### **Etchinghill W.I.**

Members and guests were welcomed by Barbara Syrett, President, to our birthday meeting.

Birthday posies were presented to Julia Tappenden and Jean Tilley.

We were entertained by Mr Dennis Lee who spoke about the life and times of George Formy. We all sang some of the old songs accompanied by Mr Lee on the ukulele. Our ladies were in great voice.  
There was also well stocked sales tables with a variety of goods which were very popular.

We then had a very nice tea served by the committee. A very enjoyable time was had by all.

Next month is our Annual General Meeting on 17<sup>th</sup> November at 2.30pm.

For further information please contact Barbara Syrett on 01303 265229 or Dottie Cross on 01303 862141

### **Friends of Kent church sponsored bike ride**

As we confidently expected, the 17 of us who took part in the sponsored bike ride on Saturday 12 September enjoyed beautiful weather. The outstanding statistic this year was the number of punctures. Four in five miles! The sight of the unfortunate rider crouched over the upside-down bicycle muttering 'this has never happened to me before' got rather monotonous.

Punctures were duly mended and we safely negotiated our circular route starting and ending at Lyminge, taking in a stretch of coast, steep hilly bits and lots of lovely churches. Needless to say the highlight as always was the Clarendon Pub where we were able to socialise and enjoy a good pub lunch.

Despite the recession, we were able to reach a very creditable total of over £700. and our thanks go to our long suffering sponsors and anyone else involved with this event.  
Lawrence Lees



## LYMINGE HANDBELLS



The Lyminge Handbell ringers have been busy through the summer at outdoor events and have received bookings for December already. If you have a special festive event where the sound of traditional hand bells will add to your celebration, why not consider handbells? We have a large selection of popular and classical music for the festive season. All we need is a large table, room for up to 10 players and a donation of at least £40 for our charity, the Pilgrims Hospice. A contribution to travelling costs is asked for if bookings are at locations more than 5 miles from Lyminge. Weekends and evenings only please and plenty of advance notice. To request a booking please speak to Ro Edmond on 863201.

### Cycle Cuba

Kent Air Ambulance is looking for people who like a challenge!

To celebrate the twentieth anniversary of the life saving helicopter being operational in Kent, the charity is organizing a sponsored bike ride in Cuba.

Cycle Cuba is set to take place in **November 2010**, when a group representing the Air Ambulance will set off on a 5 day cycle ride covering some 348km. The route will take in the captivating city of Havana, the Bay of Pigs, Trinidad (a UNESCO World Heritage Site), the Sierra del Escambray Mountains and Santa Clara. The Kent Air Ambulance is available to every person living, working and travelling through the county each day.

We receive no Government assistance or other funding towards the annual cost of running the service, £1.7 million pa, all of which is raised through donations and fundraising by the people of Kent.

For more information visit [www.kentairambulance.co.uk](http://www.kentairambulance.co.uk) or contact Emma [emma@lifecyclepromotions.co.uk](mailto:emma@lifecyclepromotions.co.uk) or 01303 862996 for a registration pack.

### **pushing up daisies**

Why not visit our new charity shop in Lyminge at the Methodist Church Hall?

Open on

Wednesdays – Fridays 10 – 4 pm

Saturdays 10 – 1pm

The Party Season is here and donations of good as new

Party Wear would be very welcome.

We also have a shop full of stocking fillers.

If you fancy volunteering to run the shop, please ring Margaret on 863729

### **Lyminge Coffee Shop/Café**

Indian Curry Night every Friday starting  
November

Senior Citizens Specials Monday – Friday  
Home Deliveries Free

Outside functions catered for

### **BAG DIPPING**

I would like to give everyone a gentle reminder about keeping their handbags, purses and wallets safe whilst out and about. First of all don't take out any more money than you actually need, this keeps any loss to a minimum. Attaching your purse or wallet to a chain is a good idea, this is a device that keeps it attached to yourself or the bag it is in. These can be obtained at the front counter of most police stations. Also do not leave handbags or shopping bags with purses inside in shopping trolleys whilst you turn around to get things from the shelves in shops, this would be a perfect opportunity to snatch it whilst you are not looking. Christmas is not far away and our towns and shopping centres will be getting gradually busier. Kent is generally a safe place, but we can all do our bit to keep it that way by being vigilant and keeping our possessions safe.

Regards,

**PCSO 57195 Richard FOWLER**

**Hythe Neighbourhood Office**

**07772226187**

**Kent is a safe place**



## ETCHINGHILL UPDATE

### Village Hall - Open House

Nearly 40 people attended the talk on 'Caring for your assets' last month. Quite a turnout. Now you know how to minimise your inheritance tax, plan for care home fees and understand wills and what power of attorney means.

Here is the schedule of activities for **November**: 2<sup>nd</sup> - Quiz day: 9<sup>th</sup> - Xmas table decorations: 16<sup>th</sup> - Palaces of Henry VIII: 23<sup>rd</sup> - Card making: 30<sup>th</sup> - talk by RSPB; and **December**: 7<sup>th</sup> - our local PCSO: 21<sup>st</sup> - Open House Christmas lunch: 31<sup>st</sup> - New Years Eve Party: Further talks and ideas are planned for 2010 so just turn up and take part, any Monday morning!

### Village Hall - Farmers'/Craft Market

Despite the weather 21 stalls filled the hall last month with a record attendance of punters. A bumper raffle is planned for December's market in aid of the urgent repairs to the village hall perimeter wall due to weather and age deterioration and, unfortunately, vandalism! The new schedule for 2010 is out. For details contact either Bryan on 862832 or Anne on 863174.

### Neighbourhood Watch

Please be aware of a purported BT caller who says you will be cut off if you do not pay up immediately for outstanding accounts. This is a scam and you should not be intimidated even if they threaten to cut you off. It may seem that you are cut off but this is a temporary thing that rectifies itself within 30 minutes.

Also there has been a spate of thefts from handbags and purses. Please ensure that you do not leave your bag or purse with your shopping trolley when you reach out for goods. Other people see this as an opportunity to steal from you. You can get a chain, to secure your purse to your handbag, from any police station free! You can also get a chain fitted free for your front door by contacting Judith

For further details on NhW contact Judith, your co-ordinator, on 862498

### Etchinghill Residents' Association

Well the Christmas trees are on order and will be planted as soon as they arrive. The cost of providing electricity for the lights has proved to be very expensive so we are researching powering the lights by battery and are looking for volunteers to 're-charge' the batteries over the period. If you would like to contribute to the lights for the Christmas trees, or are able to offer help to re-charge them please phone 862873 or 863495

Don't miss the Race Night on November 7<sup>th</sup> at 7.00 pm at the village hall to raise funds for the Christmas tree lights

The ERA AGM is on November 14<sup>th</sup> at 2.00 pm (yes it is the 14<sup>th</sup> November) at the village hall.

Remember all residents of Etchinghill are automatically members of the Residents' Association so turn up and see what you can do for your village

### Dates not to be missed

|                                 |                                                                                         |
|---------------------------------|-----------------------------------------------------------------------------------------|
| Farmers' Market                 | 7 <sup>th</sup> November and Christmas special 5 <sup>th</sup> December 10.00 - 12.30pm |
| Open House                      | Every Monday 10.00 - 12.00 noon (see schedule above for activities)                     |
| ERA Race night                  | 7 <sup>th</sup> November 7.00pm                                                         |
| ERA AGM                         | 14 <sup>th</sup> November 2.00pm                                                        |
| Residents' New Year's Eve Party | 31 <sup>st</sup> December                                                               |

#### For Sale

Hammond Organ, model 123J2R  
Serial number 8051390  
2 registers of 37 notes each  
13 note base pedals  
Working well, but now need the space.  
£150 ono.

Please ring 01303 863197 (after 6.00pm)  
for appointment to view.

#### For Sale

Yamaha Electric Organ  
MR-700/HR-500  
Good Condition. Includes  
music and stool. £150.00

Treadmill exerciser £20.00

Tel: 01303 863129

#### For Sale

##### **Golf Buggy**

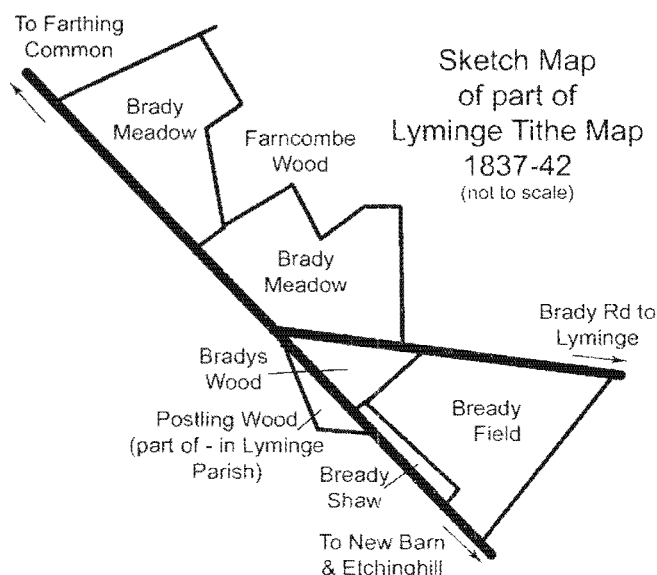
Motacaddy SI digital Golf  
Buggy, new, still in the original  
box unopened. Retail around  
£200.00.

Nearest Offer please.

Funds raised will go to  
The Alzheimers Society  
Contact: 01303 862790

## Lyminge History Questions and Answers

I must start this month's article with a correction concerning Jubilee Field behind Lyminge Village Hall. Alan Boughton has told me that Jubilee Field was purchased by Lyminge Parish Council in the 1970s and not donated to the Parish Council as I indicated last month. Initially, this was so that the football pitch and the Scout Hut could be constructed. At a later stage it was realised that the land could also be used for the construction of the village hall. Please accept my apologies for any confusion that I might have caused.



Returning to the subject of the origins of place names in the locality Q/A1, Jack Simmons has contacted me with information about the origin of Brady Road. He is producing a Field Map of the parish based on the 1837 Tithe Map. This, with the associated list of apportionments gives names to many of the fields that surround our villages. Jack's studies have revealed that several portions of land at the top of Brady Road, where it meets the road from New Barn, have the name Brady or Bready. The sketch map to the left illustrates this. This would seem to indicate that Brady Road leads to the lands associated with the name Brady. It could be that the land was named after a person, as suggested by Bradys Wood (although there is no apostrophe in Bradys). On the other hand, it could be that these fields were all or part of the mediæval administrative unit (the yoke) I wrote about last month. Whatever, it would seem that the origin of Brady Road's name has been pushed back into to

the first half of the nineteenth century. Incidentally the portion of Postling Wood that can be seen within Lyminge Parish is now in Postling Parish. Also worth mentioning is Bready Shaw which currently exists as the eastern side of the roadside nature reserve. According to the Oxford English Dictionary, a shaw is a "thicket, a small wood, copse or grove" and also a "strip of wood or underwood forming the border of a field." (<http://dictionary.oed.com> [accessed via KCC online library services 15/10/09]).

John Carr has been in touch and has suggested that Kimberley Terrace was probably named after the siege of Kimberley, in South Africa, which was a nationally celebrated British victory of the Second Boer War. It lasted 124 days and eventually the British settlement and diamond mines were relieved by a cavalry division under Lieutenant-General John French in February 1900. John Carr also told me that there are many streets throughout the UK named after victories in the Boer War.

Next it's onto the weasels and stoats (Q/A20). Mike Chisnall reminded me of the difference between a weasel and a stoat. He wrote, saying: "It is very simple: one is weasily recognised and the other is stoatily different." Maybe my memory is closer to reality where weasels are wee and stoats are stouter. My memory also seems to say that if you see what looks like a ruler running across the road, that's a weasel. Finally, Pat Gear introduced a more serious note to the discussions because she contacted me and told me that stoats (also known as ermine) are bigger than weasels and always have a black tip to their tails. This is even in winter when the rest of their fur turns white in more northern climes than here in Kent. Has anyone seen any stoats or weasels locally?

Finally here are the September 2009 Etchinghill weather statistics:

|                    |                                    |                      |                          |
|--------------------|------------------------------------|----------------------|--------------------------|
| Maximum Temp       | 25.4 °C (8/9/09)                   | Minimum Temp         | 6.9 °C (27/9/09)         |
| Maximum Wind Speed | 21.4 mph (3/9/09)                  | Max. Rainfall in 24h | 8.8 mm [0.3 in] (4/9/09) |
|                    | Beaufort Scale 5                   | Monthly Rainfall     | 13.6 mm [0.5 in].        |
|                    | Fresh Breeze                       |                      |                          |
|                    | (i.e Moderate size branches move.) |                      |                          |

That's all for this month. If any one wants to ask or answer any question about the locality's heritage then please contact me. In particular, is there any more information about St Mary's Hospital (Q/A22) and any local environmental projects (Q/A 21)?

Alistair Bailey  
(email: [abailey447@aol.com](mailto:abailey447@aol.com) tel: 864235)

### Lyminge Village Hall

At the heart of our busy community the Village Hall offers an excellent venue for up to 200 people and can meet a variety of requirements with its small Committee Room, larger Club Room and the Main Hall with servery and large stage. We have invested heavily during 2008 with a storage extension completed plus new Ladies toilets. With the full stage now available concerts and bands can be accepted. With excellent parking, kitchen facilities and plenty of tables and chairs the Village Hall makes a great place for larger celebrations or charity events. Price example: Friday or Saturday evening £50.00

For full price details and availability just give Jacqui Storey a call on 862044

### LYMINGE METHODIST CHURCH HALL HIRE

#### **Hall**

1 June to 30 September £5.50 per hour  
£19 per 4 hour session £35.50 full day  
1 October to 31 May £8 per hour  
£26.50 per 4 hour session £46.50 full day (includes heating)

#### **Parlour**

£5.00 per hour all year with use of Electric over heaters if required

#### **Overnight stays**

1 June to 30 September £33  
1 October to 31 May £44  
(Including heating)

For any enquiries please 'phone 07971 722401

## **Lyminge Pre-School**



'Partnership with parents and carers is outstanding' Ofsted (Oct 2007).

We are a well established pre-school with committed, enthusiastic and friendly staff passionate about providing excellent childcare. We welcome children from all the surrounding villages and towns, offering a breakfast club together with a range of sessions to suit your needs. Located in the village hall we have a fabulous outdoor play area together with spacious indoor facilities. To register your child and find out more please call 01303 863149/01303 862634. Alternatively visit our website

[www.lymingepreschool.org.uk](http://www.lymingepreschool.org.uk) or email  
[admin@lymingepreschool.org.uk](mailto:admin@lymingepreschool.org.uk)

### **ETCHINGHILL VILLAGE HALL**

#### **HIRE FEES**

#### Occasional Users

Standard weekday rates (08h30 to 23h00)

Hourly rate – up to 4 hours ..... £7.00  
1 Session – 4 continuous hours ..... £21.00  
2 Sessions – 8 continuous hours ..... £42.00  
All-day rate ..... £70.00

Weekend rates (08h30 – 22h00 Sundays) will be £10.00, £30.00, £60.00 and £100.00 respectively

Discounted rates are available for **Etchinghill Residents** who are occasional hirers and for **Regular Users** after 12 months' hiring.

**The Committee Room** costs £6.00 per session for **Regular Hirers**, £6.00 per hour for **Non-Residents** and £5.00 per hour for **Residents**.

All-day hire for **Weddings, Banquets and Commercial Functions:**

**£100.00 for Residents**  
**£200.00 for non-Residents.**

For bookings and enquiries, please contact **Eileen** on 01303 862832.

### RHODES MINNIS VILLAGE HALL

Are you looking for a hall in which to hold Practice sessions, private party/function or Meeting?

Rhodes Minnis Village Hall has the capacity to take parties of up to 100 and has kitchen facilities at no extra cost.

#### **Rates:**

Sun – Fri £14.00 per session. £34.00 per day  
Sat - £20.00 per session. £27.00 evening session  
£55.00 per full day.

#### **Session Times:**

AM session 8.30am – 12.30pm  
PM session 1.30pm – 5.30pm  
Evening Session 6.00pm – 11.45pm

A £25.00 returnable deposit is payable in advance. Electricity will be charged at 18p per unit. Regular users will be given a special reduced rate.

For details contact Mick or Dorothy Athow on  
**01303 862616**

### Sibton Park Cricket Pavilion Club

Having a party? Need a local venue?  
Why not take advantage of Sibton Park Cricket Club's lovely pavilion?

We have a bar with club price drinks & friendly efficient staff.

There is capacity for up to 100 guests. For further information or to make a booking please

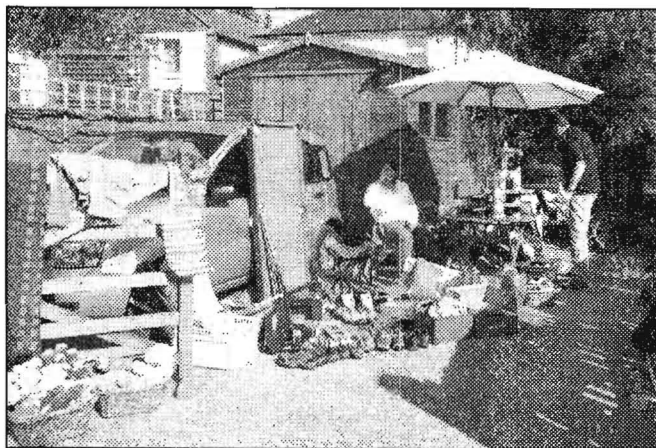
Contact Lesley Kirk, Tel: 01303 862366

# Out and About

*A Selection of the photos received of events that have taken place in the last few weeks*



Earlier in October the Union flag was raised on the flagpole at Everist Court for the first time for over 30 years! Two Gurkhas performed the ceremony in front of about 30 people. John Brooks [Age Concern's Community Information and Liaison Assistant] has been working with the Gurkhas and when he asked if they could assist, they were very pleased to help our village.



## The Garage Safari

What a selection of toys! The Garage Safari was a great success in October, with an enormous variety of different items to buy around the village. The weather was great too!

## Lyminge Guides - Switzerland 2009

*A report from a Lyminge Guide.*

A group of Guides from 1st Lyminge and 14th Folkestone set off in August on a journey of a lifetime. We travelled in a coach and ferry to get to France and then had a rough night in a coach travelling to Switzerland. We got to a restaurant for breakfast of croissant, roll, some juice and cereal. Then we carried on to Adelboden. When we saw our chalet it looked tiny but very cosy and we couldn't wait to find our rooms!

While we were staying in Adelboden, we did a lot of exhilarating things, we went shopping, to the wood carvers, the gorge, swimming, we went to Our Chalet (The Guide Association World Centre in Switzerland), we saw waterfalls, we went on cable cars, we saw lots of cows, we went on a toboggan run, a steam train, a sightseeing ferry, and best of all, the adventure park!!! This had tree-top crossings and tons of zip wires, which was just what I liked doing! Amazing views were everywhere and all the chalets were so pretty! The walks every day were very long and hot, so we lost a lot of calories!

Overall we had a great time!



Lyminge Guides gave a presentation about their Switzerland trip to parents and friends and representatives of The Lyminge Association which helped with their expedition.



Some of Lyminge Guides with two newly enrolled members and Gladys the Cow who came back from Switzerland. Watch out for Gladys at other Guide events in the coming year!

*If you have any photos of your group in action or a local event and can add a few words about it, please call 86.23.28. There is no charge for entries in Out & About, but space is limited!*

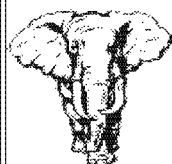


## Qualified Reflexologist

Home and Gift vouchers  
also available

Please contact

Helen 01303 863255



## Filehurst Associates

Document/Archive Storage

Household Storage Units

Commercial Storage

01303 239990

[www.filehurstassociates.co.uk](http://www.filehurstassociates.co.uk)

## FRESHLOOK GARDENS

Garden design. Regular lawn mowing service available. General garden work undertaken. Rubbish cleared. Overgrown gardens cleared. Winter pruning and hedge cutting.

For free quotation ring Geoffrey Hogben. KCC registered

Telephone 01303 844680

Mobile 07866 091633

## QUAD BIKING

Ride a 400cc Four wheel drive Quad bike over hills, fields, through the woods and around a disused quarry. Professional Instructor led trek around a superb 80 acre site near Dover. All equipment provided.

Buy an exhilarating experience. Gift Vouchers available

A Christmas or Birthday present idea?

[www.eventmasterkent.com](http://www.eventmasterkent.com)

Tel 01303 864229

## LOGS FOR SALE

Seasoned Logs,

£70 large high capacity load

*Delivered free to your door!*

Call 01227 709716



## OSCAR PET FOODS

QUALITY PET FOODS AT VALUE FOR MONEY PRICES

DIET TO SUIT ALL DOGS

WILDBIRD FOOD AND PEANUTS

FREE HOME DELIVERY

01303 862200

[WWW.OSCARS.CO.UK](http://WWW.OSCARS.CO.UK)

## Wilco Plumbing & Heating Central Heating Installations & Repairs

Gas & Oil Boiler repairs & replacements

LPG, Solar & Unvented hot water specialist.

Landlords Gas safety Inspections

Local Experienced Engineer.

Registered with the Institute of Plumbing

Gas Safe Registered

*KCC Trading Standards Approved*

01303 862173 07860 452640

## Jackson Plumbing

Property Maintenance

Complete bathrooms and tiling

No job too small. Special rates for OAP's.

Telephone: Home/evening 270691

or day time 07773 089398

(please note new mobile number)

## BEAVER BUILDERS

Jon Daughters

Conversions

Driveways

Plastering

Roofing

Patios

Decorating

Carpentry

Drains

Plumbing

**FREE ESTIMATES**

Tel: 01303 863371

## SIX MILE GARAGE LTD

Stone Street, Stelling Minnis, Canterbury, Kent CT4 6DN

- Car and light commercial servicing
- Class 4 and 7 mots and repairs
- Car and light commercial accident repair centre (insurance approved)
- Diagnostics bay with latest equipment
- Tyre bay with four wheel alignment and balancing
- Air conditioning servicing

Tel. 01227 709214 or 01227 709491, Fax 01227 709331

E-mail [office@sixmilegarage.co.uk](mailto:office@sixmilegarage.co.uk),

Total garden care for all your needs

## TIM MILLETT

Grass Maintenance

General Gardening

Fencing Repairs & New Installations

Small & Medium Size Tree Work

Turfing

Hard & Soft Landscaping

Free Estimates

Fully Insured

01303 863676

Mob: 07752 880583

Email: [info@tmhorticulture.co.uk](mailto:info@tmhorticulture.co.uk)

## T. M. GRIGGS

## Tree Felling and Maintenance

Telephone 01303 863103

Mobile 07854 098 395

Fully Insured Free Quotations

### **YOGA & RELAXATION CLASSES**

Local friendly adult classes suitable for all abilities  
Mon 7pm - Rhodes Minnis Village Hall  
Tues 10am - St Paul's Church Hall, Sandgate  
Wed 10am & Thur 7pm - Elham Village Hall  
Thur 10am - Etchinghill Village Hall  
Tel: Chris Yorke on 01303 863196  
or email [yorkes@yoga4freedom.co.uk](mailto:yorkes@yoga4freedom.co.uk)  
For more info visit [www.yoga4freedom.co.uk](http://www.yoga4freedom.co.uk)



### **Wholistic Works, Podiatry & Complementary Health Clinic**

Tel: 01303 863359 e-mail: [info@wholistic-works.co.uk](mailto:info@wholistic-works.co.uk)

2 Station Road, Lyminge, Folkestone, CT18

Treatments available include a full range of Podiatric services by Mrs Lyle Arnold B.Sc. (see [www.wholisticworkscclinic.co.uk](http://www.wholisticworkscclinic.co.uk) for more details) and a range of Complementary Health Therapies including: Aromatherapy, Hopi Candles, Reflexology and Reiki.

An Osteopathic clinic with Mr Adam Price B.Sc. (Ost), is also available on Thursdays. Mrs Arnold and Mr Price are also at 26 Cheriton Gardens, Folkestone.

**Consultations by appointment only**

### **Jim Smith**

***Carpenter/Joiner***

**Over 50 years experience**

**Doors, Windows, Conservatories**

**Stairs, Bespoke Furniture**

**Telephone 01303 862826**

### **HILLARYS BLINDS LTD**

For your Office Home or Conservatory

- ❖ unbeatable choice
  - ❖ expert advice
  - ❖ free quotation
  - ❖ select at home
  - ❖ quoted price includes fitting
  - ❖ daytime, evening or weekend appointments
- GORDON BOUCHER**  
**01303 862949**



### **HONEST JOHN NEWING**

**Portable Electrical Appliance Testing (PAT). DIY Handyman, General**

**Maintenance and Gardening. Reliable & Trustworthy. No Job Too Small, call for a free quote 01303 862873 or 07758 326824**

**Email: [johnspattesting@googlemail.com](mailto:johnspattesting@googlemail.com)**

### **COUNTRY FARE**

**CATERING SERVICES**

Country Weddings, Christenings & All Family Gatherings  
Corporate Lunches, Seasonal Parties & Celebration Cakes

Contact Sally Burr

Telephone: 01303 863103, Mobile: 07814 610995,

Email: [info@countryfare.plus.com](mailto:info@countryfare.plus.com)

### **Manor Veterinary Clinic**

Manor Veterinary Clinic has moved to:

Shearway Road, Shearway Business Park, CT19 4RH

**01303 273203**

*New premises - same care*

Lyminge surgery: Methodist Church Hall - Mon, Wed & Fri.

### **STERRY FUNERAL SERVICE**

CLIVE STERRY OFFERS A LOCAL FAMILY OWNED FUNERAL SERVICE

Help and advice 24 hours a day

Traditional and Green funerals

Home visits

Pre-paid Funeral Plans & Memorials

Always at competitive prices

Call 272525, 93 Cheriton High Street

Also Lyminge 862540 after 6pm

### ***The Ovenscleaners***

Kent's leading Domestic Oven Cleaners

Non Caustic, Fresh solutions every clean

Ovens, Ranges & AGA's

Hobs, Extractors, Microwaves & BBQ's

Tel: 0800 328 9342 for your free quote

Local Representative Geoff Cheshire

### **Red Dragon I.T Ltd.**

**'Computer Specialists'**

We offer the 'One Stop Shop' for all your computer requirements.

Our services include repairs, bespoke PCs, maintenance, peripherals, consumables and web design.

**[www.rdit.co.uk](http://www.rdit.co.uk) 01303 723456**

### **LYMINGE FOOD AND WINE**

**01303 862225**

We are offering you...

Household goods \* News & Magazines \* Wines & Spirits  
Beers \* Soft drinks & Confectionery \* Bakery \* Chilled &  
Frozen Food \* Flowers \* Fresh Fruit & Vegetables \* Cash  
Machine \* Western Union Money Transfer.

Pay Point for (Gas, Electricity, Council Rental, Holidays, TV  
Licence, Congestion Charge, Mobile Top-up).

We are always running offers.

### **JUBILEE FARM SHOP**

**Rhodes Minnis, Telephone 862317**

Organic eggs. Fresh fruit and vegetables.

High quality meat at reasonable prices.

Jubilee organic Aberdeen Angus beef.

Jubilee Organic Lamb (whole or half to order)

Large range of organic produce.

**OPEN 9am-5pm Mon - Sat.**

## Peter and Paul Property Maintenance

Have you things that need to be done...in the house, in the garden, to the outside of the house... but never know quite where or when to start, let alone having the time to do it?

Give us a call. We can help, starting off with a free quotation at extremely sensible prices.

Contact Peter Barnes on 07808 775302 - [PBarnes20@aol.com](mailto:PBarnes20@aol.com)

or

Paul Dimmock on 01227 709783 - [PDimmob@btinternet.com](mailto:PDimmob@btinternet.com)

## Personal Computing

For straightforward I.T. advice, solutions and training

Contact:

Steve Ashman

862869

[sra@ashman-consulting.co.uk](mailto:sra@ashman-consulting.co.uk)

## LYMINGE HARDWARE

4 Station Road, Lyminge.

01303 862932

Hardware, DIY, Calor Gas, Wood and Timber cut to size, Paint, Wild Bird Food, Plants, Plumbing, Electrical, Salt for Dishwashers and Water Softeners, Building Sand, etc.

The list goes on and on, please call in and see us.

## Auto Economy Centre

**Fully equipped Mechanical Repair & Service Centre  
with the latest diagnostic equipment.**

**Brand New MOT Testing Station - £10 off**

**01303 863656**

**Orchard Garage, Canterbury Rd, Etchinghill**

**[www.autoeconomycentre.com](http://www.autoeconomycentre.com)**

## N.P.C. Domestic Services

*Service and Repair of washing machines, tumble driers, dish washers, cleaners and small electrical work*

*For a prompt and friendly service*

**Telephone Neil Collard on 248887**

**Mobile 07798 716044**

## Etchinghill Golf, Canterbury Road, Etchinghill

Lunches served seven days a week, open to the public. Every Sunday we run a carvery from £8.95 (special prices for children).

We also accommodate weddings, parties and christenings. New all inclusive wedding pack @ £35.00 to include drinks on arrival, three course wedding breakfast, wine at the table, sparkling wine for the toast, evening disco and evening buffet for your day time guests.

Etchinghill is part of Pentland Golf Group, also at Boughton, Faversham and Austin Lodge, Dartford.

All enquiries telephone 01303 863863 or email [deb@pentlandgolf.co.uk](mailto:deb@pentlandgolf.co.uk)  
[www.pentlandgolf.co.uk](http://www.pentlandgolf.co.uk)



**Regional Specialists  
in Village & Country  
Property for East Kent**

OPEN 7 DAYS



**Browns**

Chartered Surveyors & Estate Agents

135 Canterbury Road      Bank Buildings  
Hawkinge      High Street, Elham

01303 892000

01303 840422

[www.brownscountryproperty.co.uk](http://www.brownscountryproperty.co.uk)

[info@brownscountryproperty.co.uk](mailto:info@brownscountryproperty.co.uk)

## Mark Beer

Landscaping – Groundwork – Trenching

Patios – Paving – Decking – Driveways

Sand Schools – Drainage

**Mini Digger Hire – Self Drive or Operated**

CITB Registered – Fully Insured – 20 years experience

**Phone/Fax 863893 or 07949 291742.**



## D. SCRIVENS

**PLUMBING & HEATING**

Oil Fired Boiler Installation,

Commissioning, Service and Maintenance.

Unvented Hot Water Systems – Solar Water Heating

Central Heating – Water Softeners – Bathrooms – Showers – En suites

Approved 'Aqualisa' Installer

**WATER INDUSTRY 'APPROVED PLUMBER'**

**FULLY INSURED**

Mobile: 07810 897076

Email: [scrivensplumbing@aol.com](mailto:scrivensplumbing@aol.com)

**City &  
Guilds  
Qualified**

## K & M LEWSEY LTD

**PLUMBING & HEATING ENGINEERS**

ESTABLISHED 1969

REGISTERED PLUMBER

GAS ACOP APPROVED ENGINEERS

**TELEPHONE: 01303 264535**

MANNED OFFICE,

DAYTIME MONDAY TO FRIDAY



**Roger Dowle**

## The Driving Instructor

Learn to drive or refresh your skills and build your confidence. ADI Qualified, professional & patient tuition.

**Call Roger on 07870 93 99 36**

**Lyminge based**

## Key Spaces

Kitchens & Bathrooms

**Quality kitchen and bathroom specialists.**

We offer a first class service to all our customers for design, installation and beyond.

**[www.keyspaces.co.uk](http://www.keyspaces.co.uk)**

Tel: 01233 501 591

Email: [info@keyspaces.co.uk](mailto:info@keyspaces.co.uk)

Mersham le-Hatch business village, Hythe Road, Ashford, TN25 5NH

## DILTON

### MINI SKIP HIRE

Ballast, Hardcore, Sand and Topsoil Supplied  
*REGISTERED WASTE CARRIER*

**Telephone: 812448 or**

**Mobile 07799 433754**



## M. J. Athow

BUILDER & DECORATOR, EST. 1965  
GENERAL MAINTENANCE  
*Member of the Federation of Small Businesses*  
Qualified and Insured. Free estimates  
Telephone 862616 Mobile 07976 306665  
Email: m.j.athow@live.co.uk  
Website: <http://mjathow.spaces.live.com>

## AIR LINK CARS

(You pack up, we pick up)



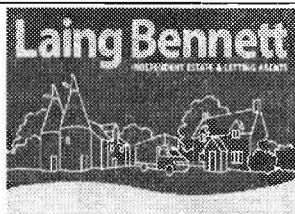
Airport, Seaport & Long Distance Travel Specialists.  
The Family Run Business where service really counts  
Estate cars and People Carriers  
Fixed price 24hrs a day. No extras.  
Written Confirmation of booking.

**For the Easy Airport Link, Think Air link!**  
**01303 862704 - 07753 760897**

## WILL WOODBRIDGE

Carpenter/small works builder  
With years of experience

Telephone 01303 863062



Laing Bennett is the new  
independently owned  
estate and letting agents  
serving Lyminge and the  
surrounding area.

The Estate Office 8 Station Road, Lyminge, Kent CT18 8HP  
T 01303 863393 E [info@laingbennett.co.uk](mailto:info@laingbennett.co.uk)  
[www.laingbennett.co.uk](http://www.laingbennett.co.uk)



## SEATHWAITE BOARDING CATTERY LTD.

Supporting Rhodes Minnis Cat Sanctuary  
GREEN LANE, RHODES MINNIS, CT4 6XU  
TEL: 01303 862243 (Registered charity 262245)



**ONLY CATS BOARDED, IN QUIET COUNTRY LOCATION**  
Individually heated chalets. Single cats £5.50 per day, a reduction for 2 or  
more cats. All cats boarded with us must have current vaccinations against  
cat flu & feline enteritis.

**All profits from the boarding cattery go to support homeless  
cats in the Sanctuary.**

**RHODES MINNIS CAT SANCTUARY**  
has a wide variety of cats available to caring homes.

## Alan J. Boughton

Small Works Builder

All aspects of building work undertaken

40 years experience

Telephone: 862075

*The Lyminge Association wishes to  
express its sympathy to the family of  
Brian Hewett, who has advertised in  
these pages for many years and whose  
death we sadly learned of last week.*

## Auto Tyre Centre

Fully equipped tyre centre with laser wheel alignment

**01303 863656**

**Tyres at prices that are hard to beat**

**Orchard Garage, Canterbury Rd, Etchinghill**

**[www.autotyrecentre.com](http://www.autotyrecentre.com)**

## R. B. BUILDING SERVICES

General Maintenance, Painting, Carpentry, Plumbing

Upvc fascias and guttering

Fully Insured

For a Free quote please ring Roy Bowling on  
Home Tel: 01303 863267 - Mobile 07947 132319

## PRO-PHASE ELECTRICAL CONTRACTORS

professional, local, reliable,  
fully qualified.

tel. 01303 862082

07525 782 924



## T. M. McIntyre Builders

All building projects undertaken  
Residential & Commercial  
Local Family Business  
Established for over 20 years

Please call for a friendly and free no obligation estimate

**Telephone Paul McIntyre 01303 863 257**