

THE LYMINGE NEWSLETTER

For the communities of LYMINGE, ETCHINGHILL, RHODES MINNIS and POSTLING

<http://www.lyminge.org.uk/>

September 2010

Produced by

THE LYMINGE ASSOCIATION

LYMINGE ASSOCIATION NEWS

Programmes are now available for our 40th Anniversary Celebrations on 4th September

Garage Safari – Sunday 3rd October. To book please contact Liz Coleman on 863197. During October Ethelburga Quilters are celebrating 10 years of existence. When they formed they were a small group of about eight members (who used to meet at Lyminge School) – and now there are 29. They out-grew the school and now meet every month (except August) in Etchinghill Village Hall. To celebrate their birthday they are giving YOU a present! They have made a range of “eco bags” – the sort of bag you can leave in your car, pop in your handbag – or wherever is convenient so that you have a bag handy for your shopping, and you don’t have to be given a plastic bag by the shop. These will be pegged to a washing line (hopefully!) at a convenient, public place, somewhere in Lyminge on **Sunday 3rd October**. They’re not telling you where – that’s the “guerrilla” bit! All you have to do is find the location and then stop and choose one (just the one!) – free of charge – it’s their gift to you.

Wednesday 6th October, the AGM of the Lyminge Association. This will be held in the parlour at Lyminge Methodist Church Hall starting at 7.30pm. Please try to attend – we need new ideas to continue the work of the Association.

Don’t forget the Old Time Music Hall on 23rd October at Lyminge Village Hall

THIS MONTH'S SPONSOR OF THE NEWSLETTER IS:

Wilco Plumbing & Heating

Central Heating Installations & Repairs

Gas & Oil Boiler repairs & replacements

5 Year Guarantee on Worcester Bosch Boilers

Local Experienced Engineer

Emergency plumbing, 24/7 call out

Registered with the Institute of Plumbing

Gas Safe Registered - OFTEC Registered

KCC Trading Standards Approved

01303 862173 07860 452640

paul@wilcoplumbing.co.uk

www.wilcoplumbing.co.uk

LYMINGE PARISH CHURCH SERVICES

Wed 1 st Sept	7.00pm Holy Communion (short said) 7.30pm Open House (Bible study) 9.15pm Time of Silence & Quiet Prayer until 10pm
Friday 3rd Sept	6.00pm Songs of Praise on Tayne Field
Sunday 5th Sept	8.00am Holy Communion 10.30am WOW (World of Worship)
Wed 8 th Sept	7.00pm Holy Communion (short said) 7.30pm Open House (Bible study) 9.15pm Time of Silence & Quiet Prayer until 10pm
Thurs 9th Sept	2.00pm Pram Service
Sunday 12th Sept	10.30am Holy Communion
Wed 15 th Sept	7.00pm Holy Communion (short said) 7.30pm Open House (Bible study) 9.15pm Time of Silence & Quiet Prayer until 10pm
Sunday 19th Sept	10.30am Family Communion 6.00pm Evensong
Wed 22 nd Sept	No Holy Communion service 7.30pm Open House (Bible study) No Time of Silence & Quiet Prayer
Sunday 26th Sept	8.00am Holy Communion 10.30am Harvest Festival Service with Holy Communion (a joint service with the Methodists at the Parish Church)
Wed 22 nd Sept	7.30pm Open House (Bible study) 9.15pm Time of Silence & Quiet Prayer until 10pm

Sunday Afternoon Tea - Nailbourne Court Sunday 5th Sept.

This is held in the lounge from 3 - 5pm.

If you would like to come but need a lift, contact Sue on 862221

Craft Afternoon – Wentworth Close - Tuesday 7th Sept

2pm – 4pm in the lounge. Even if you are not a 'crafty' person, you are still very welcome to come along for a cup of tea and a chat

For more information contact Lynne on 863010

Mothers Union

For more details about the dates below please contact Sue on 862221

Wednesday 8th September

Short AGM and get together in the Methodist Church Parlour at 10.30am

Thursday 23rd September

Prayer time at 12 noon in St Gabriel's Chapel at the Cathedral

Pram Service – Thursday 9th Sept

This is a short pre-school friendly service for babies and toddlers and also a chance for their carers to get together and chat over refreshments afterwards.

For more information contact Trish on 862151

Coffee morning – Wentworth Close - Tuesday 14th Sept

This is held in the lounge from 10.00-11.30am

Do join us as we meet with the residents of Wentworth Close for coffee and a chat

Prayer Shawl Ministry Group – Wednesday 15th Sept

This group meets once a month to knit prayer shawls and pray for people, in the lounge at Nailbourne Court from 2.30pm – 4.30pm.

This is a joyous and useful way to bring prayer and healing to our world and everyone is welcome to join in whether you can knit or not. Tea and coffee are provided.

For more information contact Madelaine Lewis on 863582.

Bereavement Support Lunch – Thursday 16th Sept

These are normally held in the Coach and Horses Pub, on the 3rd Thursday of each month at 12.30pm.

All are welcome and transport can be arranged,

Please contact Lynne on 863010

LYMINGE METHODIST CHURCH

Visitors are very welcome to join us at our weekly Service at **11am** and invited to share fellowship afterwards with a cup of tea/coffee

Preachers for September:

5th Sept - Mr Dennis Bailey

12th Sept – Mr Tim James

19th Sept – Rev. Barry Armson (incl Holy Communion) Valley Service

26th Sept – **10.30am** United Harvest Service at Parish Church followed by lunch at Methodist Church (Booking essential)

Wednesday 29th September “Reflections”
7.30 – 8.30pm (Informal worship)

Monday Fellowship 2.30 – 3.30pm
beginning weekly from 20th September

For Baptisms, Weddings or Funerals, please contact the Minister, Rev Barry Armson, on 01303 266281

Rhodes Minnis Church

This small Chapel in beautiful countryside surroundings holds a weekly Sunday Service normally at 9.30am

Followed by coffee and biscuits

A warm welcome is extended to any visitors

Preachers for September:

Sept.5 - Rev. Robin Blount

Sept.12 - Mr. Tim James

Sept.19 - ***NO *service at Rhodes Minnis** but a joint Valley service with Lyminge and Elham in Lyminge Methodist Church at 11am.

Sept.26 - Mr. David Foreman

Oct. 3 - ***3pm *Harvest Festival** led by Rev. Colin Telfer

POSTLING CHURCH SERVICES

5th Sept - Evensong 6.30pm

12th Sept - Family Communion 9.30am

19th Sept - Holy Communion 8.00am.

26th Sept - Family Service – 9.30am

United Harvest Festival

A united Harvest Festival Service will be held on Sunday 26th September in the Parish Church at 10.30am.

This is also Back to Church Sunday.

Please come back to this service.

LET (Lyminge Ecumenical Team)

We would like you to give us details of your future events for this page. This will help us all plan for our own events and help spread them throughout the year. There is no charge for entries on this page. For entries into by 18th of the month.

One Off Events In Forthcoming Months		When and Where?	Contact Details
4 Sep	Lyminge Association 40 th Celebration	In the village - see posters for details	862699 Adrian
6 Sep	Surgery and Public Engagement Meeting	10am & 10.30am Etchinghill Village Hall	01797321723 Michael
11 Sep	Boot & Autumn Fayre for Lord Whisky	12:00 Park House Stelling Minnis	862622 Margaret
11 Sep	Boot Fair	7am Etchinghill Cricket Ground	07934 008600 Edgar
11 Sep	Proms in the Park	7:30pm Lyminge Village Hall	862928 Honor 862530 Niki
20 Sep	1 st Autumn session of Monday Fellowship	2:30 Lyminge Methodist Parlour	863832 Mary
20 Sep	Talk – “I was Hijacked” by Joyce Knapton	10.30 Etchinghill Village Hall	863495 – Wendy
21 Sep	Gardeners’ Society: Talk: How to Grow and Show Vegetables	7.30 Lyminge Methodist Church Hall	863225 Peter
25 Sep	Beetle Drive	7:00 Rhodes Minnis Village Hall	862616 Mick
27 Sep	Open House Luncheon	12.00 Etchinghill Village Hall	Pre-book with Barbara – 862873
1 Oct	Quiz Night for Conservatives & Leukaemia Research	7.30 Lyminge Village Hall	863060 Sue
2 Oct	Boot Fair	7am Etchinghill Cricket Ground	07934 008600 Edgar
3 Oct	Lyminge Association’s Autumn Garage Safari	9:30 am Lyminge & Etchinghill Villages	863197 Liz
9 Oct	Race Night with Fish & Chip Supper	7.00 Etchinghill Village Hall	863495 - Wendy
11 Oct	Talk – “Walking across England” by Wendy and Rodney Moppett	10.30 Etchinghill Village Hall	863495 – Wendy
16 Oct	Last Boot Fair this year	7am Etchinghill Cricket Ground	07934 008600 Edgar
16 Oct	Quiz Night	7pm for 7:30pm Lyminge Village Hall	862928 Honor 862530 Niki
23 Oct	Old Time Music Hall	7.30 Lyminge Village Hall	862142 Jane
28 Oct	Trip to Wimbledon Theatre to see ‘Calendar Girls’ (Matinee)	Details to be advised	862873 - Barbara

Weekly Events Dates 2010		When and Where?	Contact Details
Mondays	Etchinghill Open House	10:30am Etchinghill Village Hall	863394 Edna
Wednesday	Cantores Dominicae Choir	7:30 Lyminge School	01233503686 Jenny
Thursdays	Lyminge Morning Art Group	10am – 12pm Lyminge Methodist Hall	211364 Linda
Thursdays	Lyminge Afternoon Art Group	2pm – 4pm Lyminge Methodist Hall	862972 John
Thursdays	Rhodes Minnis Toddlers’ Group	10am Rhodes Minnis Village Hall	863096 Elaine

Monthly Events Dates 2010		When and Where?	Contact Details
1 st Tue	Lyminge Historical Society	7:45 Lyminge Methodist Hall	840419 Derek
1 st Wed	Lyminge Friends	10:30 Lyminge Methodist Parlour	862427 Mavis
2 nd Wed	Mothers’ Union	10:30 Lyminge Methodist Parlour	862221 Sue
3 rd Wed	Rhodes Minnis Evening Circle	7:30 Rhodes Minnis Village Hall	862913 Marion
1 st Sat.	Farmers and Craft Market	10:00 Etchinghill Village Hall	862832 Bryan
2 nd Sat	Coffee Morning	10:00 Postling Church	863536 Pat
Last Wed	Quiz Night	7.30: Coach and Horses	862694 Ray or Alice
3 rd Sun ¹	Parish Walk	10:00 Lyminge P.O. Car Park	862015 Richard
3 rd Tue	Etchinghill W. I. Meeting	2:30 Etchinghill Village Hall	862141 Dottie
Last Mon	Parish Council Meeting	See Parish Notice inside Newsletter	239500 Crispin

¹ Parish Walk starts from Rhodes Minnis Village hall in September

Dates for your Diary

Pilgrims Hospices **IN EAST KENT**

Wed 1st September Our usual coffee morning.
Raffles, Bring and Buy & cakes

The Holy Trinity Church Hall, Sandgate Road, Folkestone 9.30am onwards

FARMERS and CRAFT MARKET

ETCHINGHILL VILLAGE HALL
St Mary's Drive, Meriden Park CT19 9 NQ

4th September 2010
10am – 12.30pm

First Saturday in the Month

Contact Number for bookings
Bryan – 01303 862832

In Aid of The Lord Whisky Sanctuary Fund

Registered Charity: 2843483
Park House, Stelling Minnis, Canterbury,
Kent CT4 6AN
Tel: 01303 862622 Fax: 01303 863007
Website: www.lordwhisky.co.uk
Email: lord.whisky@btinternet.com

Boot & Autumn Fayre
Saturday 11th September, 12 noon – 3.30pm
at Park House, Stelling Minnis

Stockbury Dog Club ~ Belles Stage School ~
JoJo's School of Dance ~ Tombola ~ Bouncy
Castle ~ Raffle
Hot & Cold Refreshments

Plenty of Parking - Admission by donation
Car Boots £7.50/ Vans £10 (from 8am)

~~~~~  
Quiz Night at The Tea Rooms  
Saturday 9<sup>th</sup> October at 7.30pm  
£8 per person, to include Ploughman's Supper  
Maximum 6 per team  
To book your table, phone 01303 862349 or 01303  
862622

Come and visit the

#### **Lord Whisky Tearooms & Gift Shop**

Open every day from 10am – 4pm and 10am – 5pm at  
weekends in the school holidays  
Breakfasts, Lunches, Teas and Snacks, all freshly prepared on  
the premises  
Come and try our home made 'Monday ~Specials' only £5!!  
'Friday Fish & Chips'. Cod, haddock or scampi, all served with  
chips and peas, plus tea or coffee, just £5 (in addition to our  
usual menu)  
Friday Night is Supper Night! Fish & Chips or Sausage, Eggs &  
Chips, served from 6pm to 9pm, take-away available  
Delicious Home-made Cakes, Jams, Marmalades and  
Chutneys to take home.  
Good Quality Bric-a-Brac – Lord Whisky Gifts- Beauty without  
Cruelty products

### **Elham Valley and Wye Lions Club.** **Charity Golf Day**

Our annual charity golf day takes place on **Friday 10 Sept at Sene Valley Golf Club, Hythe**. First tee 1.30 pm. Various competitions; including a four course dinner, all for £32.50 (reduced price for Sene Valley members). Details from Ken Staff tel: 01303 238041, or any Lions club member.

Thanks to all who supported the **Railway Swing Band** concert at EVH in May. It was a magnificent concert and raised £982 for our Charity Trust Fund.

### **Leukaemia & Lymphoma Research** **Quiz night**

18 September 2010

At The Ashford School, East Hill  
Starts 7.30pm

Prizes and raffle on the night  
£5 admission per person, includes free glass of  
Wine. Please bring your own picnic  
Max of 6 per table, to reserve a table phone Keith  
on 01303 862051. Alternatively just come along  
and join in the fun.

All proceeds to Leukaemia Research, fighting all  
blood cancers

## *Lyminge Village Hall*

*Proudly Presents*

### **PROMS IN THE PARK**

*11 September 2010*

*Best Dressed Table*

*Best Dressed Male & Female*

*Promenader*

*American Supper – bring your own  
food & drink*

*Games & Prizes*

*Top-up bar available (if you run out!!)*

*£8.00 per Person*

*Please book before the event with*

*Honor 862928 or Niki 862530 for details*

*Organised by the Village Hall Management Committee  
Reg Charity 281845*

**Kent Churches Sponsored Bike Ride**  
**11<sup>th</sup> September**

The stalwarts of the village cycling fraternity are once more fine-tuned and raring to go on our Annual 'Church Bike ride'. We will start at 10.00 am from Lyminge Parish Church, follow our usual route through local villages, down to Hythe, Folkestone and back, stopping at the Clarendon pub for lunch.

To new riders – if you want a great day out, why not join us? You do not have to be super fit. We cover about 25 miles and take most of the day over it. If you want to know more about this event ring Lawrence Lees on 862922.

To all our supporters, please sponsor your favourite rider or any rider!. Thank you

**Newington Village Hall**  
Registered Charity Number 302812

**Beetle Drive**

**Friday 17<sup>th</sup> September**  
**7.30pm start**

Bring your own drinks & nibbles

For further details phone  
Karen on 277950  
Or Kirsty on 272056

**Lyminge Gardeners Society**

**A talk by**  
**Mr Roger Austin**

**How to Grow and Show Vegetables**

Refreshments will be available and there will be a raffle

**Starts 7.30pm**  
**Lyminge Methodist Church Hall.**

Members £1.00 – Non-members £2.00

**Lyminge Historical Society**

**Tuesday 5<sup>th</sup> October 7.45pm**  
**At**

Lyminge Methodist Church Hall

**A talk on**

**Shops**

By Derek Boughton  
Non-members welcome

**Etchinghill Residents Association**  
Are holding a  
**Race Night**

at Etchinghill Village Hall

**Saturday 9<sup>th</sup> October 7.30pm**

**£6. 00**

Includes Fish & Chip supper  
Please 'Phone 863495 to reserve tickets

**Autumn Quiz**

**16 October 2010**

**In Lyminge Village Hall**

*Bar*  
*2 Course Hot Supper*

*Tables of 4 – 8 persons*

*£8.00 per person*

*7.00pm for 7.30pm start*

*Hurry – some tables already sold!!*

*To book your table call:*

*Honor 862928 or Niki 862530*

Organised by the Village Hall Management Committee  
Reg Charity 281845

**FOOD AND CRAFT SALE**

**Fiona and Cheryl invite you to a Food and Craft sale on Saturday 23<sup>rd</sup> October 2010 between 10am – 12 noon in St Marys' Church Hall, Canterbury Road, Elham.**

**Home-made jams, preserves and cakes for sale.**

**Soft furnishings and Christmas present ideas.**

**Phoenix cards and wrapping paper.**

**Raffle and refreshments.**

**Lots more of interesting stalls.**

**If you would like to book a table or help in any way please contact one of us**

**Fiona Steward 01303 271735**

**Cheryl Crees 01304 832320**

**chezcrees@aol.com**

**Proceeds will go to Alzheimers Society and Leukaemia Research.**

## Notices and Reports

### Etchinghill Update September 2010

#### Farmers' market

The winners of the raffle at the August Farmers' market were:

1<sup>st</sup> prize Joanie (stallholder)

2<sup>nd</sup> prize Evelyn Holt

Next Farmers' Market Saturday September 4<sup>th</sup>, 10.00am to 12.30pm in the Village Hall

#### Open House Diary

20<sup>th</sup> September     Talk – "I was Hijacked" – Joyce Knapton

27<sup>th</sup> September     Open House Luncheon – Barbara Collins-Newing organising

11<sup>th</sup> October         Talk – "Walking across England" – Wendy and Rodney Moppett

We still have a few matinee tickets available for Calendar Girls at the Wimbledon Theatre on **Thursday 28th October**. Tickets £36.00 per head to include coach travel from Etchinghill and Lyminge. Please contact Barbara on 01303 862873 to reserve a place.

Open house every Monday morning, 10.00 am to 12.30 pm in the Village Hall, all welcome.

#### Etchinghill Residents' Association.

The new bench is in situ at the junction of Teddars Leas and Canterbury Road. This replaces the old one donated by the friends of St Mary's Hospital. The ERA are grateful for the donation from the Lyminge Parish Council. Our thanks go to Dick Read at the Nursery for making the bench and to Tim Millett and co. for helping us move it into place.

I suppose we should also say thank you to the mindless vandals who wrecked the battery box for housing the lighting equipment by the golf course. Obviously they had nothing better to do with their time than to tear the roofing to pieces. It will mean that money that could have been better spent for the use of the whole village will now have to be spent on repairing this vandalism. If anyone knows anything about this incident please inform Gary Harrison, the Community Warden, on 07977 982185.

On a more cheerful note come along to the **ERA's Race Evening on Saturday 9th October**. If the last Race Evening was anything to go by it will be a really good night. Numbers will be limited so telephone 01303 863495 to reserve tickets. The tickets will include a Fish and Chip supper.

### Etchinghill W.I.

There was no meeting in August but a Garden Party was planned for 17<sup>th</sup> August by Gill Le Cras. Due to the inclement weather Gill managed to accommodate thirty members into her home where we all enjoyed a delicious cream tea, all home baked by Gill.

Our next meeting is on Tuesday 21<sup>st</sup> September at 2.30pm when our speaker, Mrs June Page, will talk about Wellesley to Wellington.

There are a few vacancies for our coach trip to Igtham Mote on Monday 6<sup>th</sup> September. The cost is £19.50 or if a member of the National Trust £9.50. The coach leaves Etchinghill at 9.20am or Lyminge at 9.30am. For further information please contact Barbara Syrett on 265229 or Dottie Cross on 862141

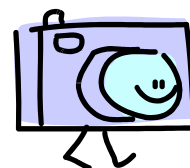
### New Lyminge Surgery

I would like to inform all my Patients from New Lyminge Surgery that I will be retiring from General Practice as from 30<sup>th</sup> September 2010.

I have thoroughly enjoyed working at the surgery and would like to thank you all for your kindness and support over the past 16 years.

I know you will extend the same courtesy to my successor Dr Jonathan Bryant

Best wishes  
*Dr Chris Catto*



## DIGITAL QUANDARY ?

If you are in a digital quandary with your digital camera or editing/printing your photographs on your computer's printer then you may be interested in reading the rest of this note. Last year as an experiment I ran a voluntary class on how to process digital photographs on home computers. It soon became obvious that there is also a need for people to have a brief introduction to using their digital cameras and then how to process the resultant pictures on their computer.

If you are interested in attending some sessions please contact me - my details are below.

The sessions are free but you will require a camera and/or a laptop computer.

At the end of the sessions if you feel you have benefited you are at liberty to give a donation to either the Lyminge Association or the Lyminge Historical Society.

I will run the sessions from my house for small groups and these will be grouped as

1) absolute beginners, 2) novices or 3) some experience. Each groups' session will last an hour to an hour and a half and the numbers per session will be limited to four or five people.

The frequency of continuing sessions will be at one or two week intervals.

I expect to start running the sessions in the early autumn on Monday and/or Tuesday afternoons.

Preference will be given to those living in the parish (Lyminge, Etchinghill and Rhodes Minnis). Other may apply and will be accommodated if there is space on any relevant session.

When writing please indicate what you want to get from any sessions and your level of experience and any particular skills you want to learn.

My contact details are John Carr, Korf House, Canterbury Road, Lyminge. CT18 8HU.

## *Lyminge Dramatic Society*

Thank you to everyone who came along to support our contribution to The Lyminge Association Anniversary celebrations - the little play, entitled "A Ring in Time", we had a lot of fun doing it.

Rehearsals begin very soon for our autumn production of Charles Dickens' Christmas Carol. We have a very talented cast and a very experienced and talented Director in Barbara Harris, so it should be a great success.

Make sure that you put the dates in your diary (24th to 27<sup>th</sup> November) and buy your tickets as soon as they are on sale – we'll let you know when that is in the next newsletter. Also, for the first time we shall be providing a telephone booking service. Hope to see you at the show!

## Music Hall chorus wanted

Are you old enough to remember the old Music Hall songs?

The Lyminge Association is running a Music Hall Evening in October.

We need you to sing the choruses to encourage the audience.

There will be two practices in October. Please come along to an afternoon's singing to help you to remember the tunes.

Please contact us on **862 142** or [page3lym@googlemail.com](mailto:page3lym@googlemail.com) and we will give you the details

## REEL-TO-REEL Tape Recorder needed.

I would like to find out what is on a few old tapes that I have.

Have you got a machine I can borrow?

Or buy if it is cheap.

Please ring 01303 863232 if you can help.  
[fonemefirst@talktalk.net](mailto:fonemefirst@talktalk.net).

## Rhodes Minnis Evening Circle

We look forward to our next meeting on the 15th September when the Rev. John Lines is giving us a talk on "Old Transport". We meet at Rhodes Minnis Hall at 7.30pm and members and visitors will be made very welcome. Marion Hoare Tel: 01303 862913



## Lyminge Handbells



The Lyminge Handbell ringers have played at several outdoor events this summer and are happy to make more bookings. So if you have a special occasion where the sound of traditional hand bells will add to your celebration, why not consider handbells? We have a large selection of popular and classical music, all we need is a large table, room for up to 12 players and a donation of at least £40 for our charity, the Pilgrims Hospice. A contribution to travelling costs is asked for if bookings are at locations more than 5 miles from Lyminge. Weekends and evenings only please and plenty of advance notice. Want more info or make a booking? Just call Ro Edmond on 863201

### **RHODES MINNIS TODDLER GROUP**

**Re-starting Thursday 7<sup>th</sup> September**

We are a small group open to mums, dads, grandparents and carers who meet on Thursday mornings at Rhodes Minnis Village Hall any time between 10 am – 12 noon during term time.

Come and have a tea/coffee while having a friendly chat as your child plays. £1.50 per session (first session free)

'Phone Elaine on 01303 863096 if you need more information

### **LYMINGE BABY AND TODDLER GROUP**

Calling all parents, grandparents or carers with children under school age at a loose end on Tuesday mornings. We meet every week (during term time ) at the Methodist Hall in Lyminge between 10.00am - 12 noon to give the children a chance to play and interact with others the same age.

We offer a wide range of craft and play activities including trikes, bikes and slides to painting books and jigsaws.

We charge £1.50 per session (1<sup>st</sup> session free) which includes 'half time' refreshments for both adults and children.

Come and join in the fun.

For further information 'phone Karen  
01303 863274

### **Age Concern Lyminge 01303 862364**

Charity No. 1128429

#### **Services**

Lunches  
Laundry  
Hairdressing  
(Male & Female)  
Hearing Aid Support  
Information & Advice  
Transport to & from the Centre

#### **Activities**

Arts & Crafts  
Health & Wellbeing  
Social History  
Seated Exercises  
Computer Training  
Lip Reading Classes

Chief Officer: Lisa Hodden

Centre Manager: Matthew Martin

Jubilee Day Centre, Everist Court, Station Road,  
Lyminge, Kent CT18 8HQ

Email: [enquiries@ageconcernlyminge.co.uk](mailto:enquiries@ageconcernlyminge.co.uk)

Web Page: [www.ageconcernlyminge.co.uk](http://www.ageconcernlyminge.co.uk)

### **For Sale**

Pedigree "Bichon Frise" puppies  
Nice natured dogs  
Excellent with children!  
Good with allergy sufferers – No moulting!

Ready to go October 1<sup>st</sup>  
Can be viewed with mother

Contact for more information  
Tel: 01303 221143

**The total now raised from our event on Friday for  
Help our Heroes is £210.  
Thank you all very much  
Katherine**

### **For Sale**

35 gallon blue barrels, ideal for garden storage  
Frost proof £15.00 each

Tel: 07776300712

### **Found**

3<sup>rd</sup> August A metal garden chair  
Tel: 862352



## Lyminge Heritage Questions and Answers

It's 'back to school' time and I can now report about some of the games that the children play in the playgrounds of Lyminge Church of England Primary School (Q/A 22). I am grateful to Mrs Steel, Mrs D'Cruz, the children of last year's 'Seahorses' class (who are now moving on to secondary schools - best wishes to you all) and my eight year old daughter. Not surprisingly, the list includes Football and Skipping. The latter, sometimes involves the rhyme, "Teddy Bear, Teddy Bear touch the ground, Teddy Bear, Teddy Bear turn around." These games are well known to us all, as is 'Tag' or 'It'. A variant of 'Tag' that is played at Lyminge School is 'Ten Bunker' which involves two teams that have to get 'home' without getting caught. Another version is 'Stuck In The Mud' where there is one 'it' whose aim is to catch all the other participants. When someone is caught, they are not allowed to move and can only be released if touched by someone who is still free. Next on the list is Red Letter, a type of race. Here a 'caller' shouts out letters. If the letter is 'E', it is followed by nothing or the word "Safe." The other participants line up at the bottom of some steps or in a flat part of the playground. If a letter is called out that is in a player's name, then that person can move up or forward one step. If someone moves when 'E' is called without it being followed by the word 'safe' then they have to return to the start (a bit like 'Simon Says'). The winner is the first person who reaches the agreed finish line. Another local game is Bulldog which may be similar to the game 'British Bulldog' that I played as a child. Unfortunately I have been unable to find out, for certain, what this game involves. Can somebody enlighten me? Next is the game, Cops & Robbers which appears to be a role-play game. Finally, there is the remarkably named 'Duck, Duck, Goose' where the participants stand in a circle. One person (A) goes round the outside of the circle touching each person on the head and shouting, "Duck" each time. Eventually, that person decides to shout, "Goose" and starts to run right around the circle. The person touched on the head (B), at that point, runs after and tries to catch the first person (A) before he/she gets right around the circle and back to the space. If the first person (A) gets to the space, then the other (B) becomes the person shouting "Duck, Duck, ... Goose!" If the second person (B) catches the first (A), then he/she (A) carries on with the task. It's a bit difficult to describe that last game but I hope all of this encourages memories of your childhood. If you remember any childhood games that were played locally then get in touch with me.

That's all for now. If you have any answers or questions about the local heritage then please contact me.

Alistair Bailey (email: [abailey447@aol.com](mailto:abailey447@aol.com) tel: 864235)

## Lyminge Weather Statistics July 2010

Thanks to Mr D Godden for these weather statistics and notes.

|                        | Maximum          | Minimum                                  |
|------------------------|------------------|------------------------------------------|
| Temperature (°C)       | 32.8 (9/7/10)    | 8.0 (5/7/10)                             |
| Air Pressure (hPa)     | 1017 (4-11/7/10) | 1013 (12-17/7/10)                        |
| Wind Speed (mph)       | 40 (14/7/10)     |                                          |
| Total Monthly Rainfall | 46 mm (1.81 in)  | Highest day 13 mm (0.51 in)<br>(12/7/10) |

There was very little variation in air pressure this month. It was one of the three dry Julys that we have had since 2000. The rest have been wet.

## LYMINGE FRIENDS

Meetings are 10.30 - 12.30 in the Methodist Church Parlour. **Everyone welcome.**

**Wednesday 1<sup>st</sup> September** - A talk on the UK Courts system by Judith Lansdell

**Wednesday 15<sup>th</sup> September** - Biddenden Vineyards

**Wednesday 22<sup>nd</sup> September** - Group Pub Lunch

**Wednesday 6<sup>th</sup> October** - A talk by Laton Frewin on National Trust Houses of Kent & Sussex.

**Wednesday 20<sup>th</sup> October** - Curry Night for Lyminge Friends and their Friends

**Wednesday 3<sup>rd</sup> November** - A talk by Jo Jones of the Alzheimer's Society. Followed by our annual Bring and Share Lunch

**Wednesday 17<sup>th</sup> November** - Group Shopping Trip

Entrance £1.50 inc. refreshments. For more details contact Marian on 862015

### LYMINGE METHODIST CHURCH HALL HIRE

#### **Hall**

1 June to 30 September £5.50 per hour  
£19 per 4 hour session £35.50 full day  
1 October to 31 May £8 per hour  
£26.50 per 4 hour session £46.50 full day (includes heating)

#### **Parlour**

£5.00 per hour all year with use of Electric over heaters if required

#### **Overnight stays**

1 June to 30 September £33  
1 October to 31 May £44  
(Including heating)

**For any enquiries please 'phone 07971 722401**

### Lyminge Village Hall

At the heart of our busy community the Village Hall offers an excellent venue for up to 200 people and can meet a variety of requirements with its small Committee Room, larger Club Room and the Main Hall with servery and large stage. We have invested heavily during 2008 with a storage extension completed plus new Ladies toilets. With the full stage now available concerts and bands can be accepted. With excellent parking, kitchen facilities and plenty of tables and chairs the Village Hall makes a great place for larger celebrations or charity events. Price example: Friday or Saturday evening £50.00

For full price details and availability just give Jacqui Storey a call on 862044



### **Lyminge Pre-School**

We're proud of our latest Ofsted report which stated that our 'Partnership with parents and carers is outstanding'

We are a well established pre-school with committed, enthusiastic and highly qualified staff.

We offer a range of flexible sessions, Breakfast Club, outdoor play area with sensory garden and spacious indoor facilities.

To discuss your requirements or to arrange a visit and meet the team, call 01303 863149 / 862634. Email [lymingepreschool.org.uk](mailto:lymingepreschool.org.uk)

**Did you know...? KCC will fund up to 12\_ flexible hours per week for children 3+years.**

### **ETCHINGHILL VILLAGE HALL HIRE FEES**

#### **Occasional Users**

Standard weekday rates (08h30 to 23h00)

Hourly rate – up to 4 hours ..... £7.00  
1 Session – 4 continuous hours ..... £21.00  
2 Sessions – 8 continuous hours ..... £42.00  
All-day rate ..... £70.00

Weekend rates (08h30 – 22h00 Sundays) will be £10.00, £30.00, £60.00 and £100.00 respectively

Discounted rates are available for **Etchinghill Residents** who are occasional hirers and for **Regular Users** after 12 months' hiring.

**The Committee Room** costs £6.00 per session for **Regular Hirers**, £6.00 per hour for **Non-Residents** and £5.00 per hour for **Residents**.

All-day hire for **Weddings, Banquets and Commercial Functions**:

**£100.00 for Residents**

**£200.00 for non-Residents.**

For bookings and enquiries, please contact **Eileen** on **01303 862832**.

### RHODES MINNIS VILLAGE HALL

Are you looking for a hall in which to hold Practice sessions, private party/function or Meeting?

Rhodes Minnis Village Hall has the capacity to take parties of up to 100 and has kitchen facilities at no extra cost.

#### **Rates:**

Sun – Fri £14.00 per session. £34.00 per day  
Sat - £20.00 per session. £27.00 evening session  
£55.00 per full day.

#### **Session Times:**

AM session 8.30am – 12.30pm  
PM session 1.30pm – 5.30pm  
Evening Session 6.00pm – 11.45pm

A £25.00 returnable deposit is payable in advance. Electricity will be charged at 18p per unit. Regular users will be given a special reduced rate.

**For details contact Mick or Dorothy Athow on  
01303 862616**

### **Sibton Park Cricket Pavilion Club**

Having a party? Need a local venue?  
Why not take advantage of Sibton Park Cricket Club's lovely pavilion?

We have a bar with club price drinks & friendly efficient staff.

There is capacity for up to 100 guests. For further information or to make a booking please

**Contact Lesley Kirk, Tel: 01303 862366**

# Out and About

*A Selection of the photos received of events that have taken place in the last few weeks*

**The Morris Men** performing at the Beer Festival held at the Coach & Horses over the week-end of the 14th/15th August



**The Lyminge Archaeological Dig** held again this year in a field off Rectory Lane where more evidence was found for the early settlement of Lyminge. The photo shows Dr. Gabor Thomas explaining the site to visitors on one of the open afternoons.



**Lyminge Historical Society** used their June meeting time to visiting Lympe Castle where the Society's President, Derek Boughton gave a most informative talk about the Castle and those who had inhabited the building over the centuries. There was a very large turnout of the membership of the Society.



**SOLUTION** to last month's CROSSWORD - how did you do ?

This month's puzzle is over the page ....



## Mystery Photo

Last month's Mystery Photo was a shot of one end of the see-saw in the small children's play area near to the Coach & Horses.

Where is this ?

It is in clear public view somewhere in Lyminge





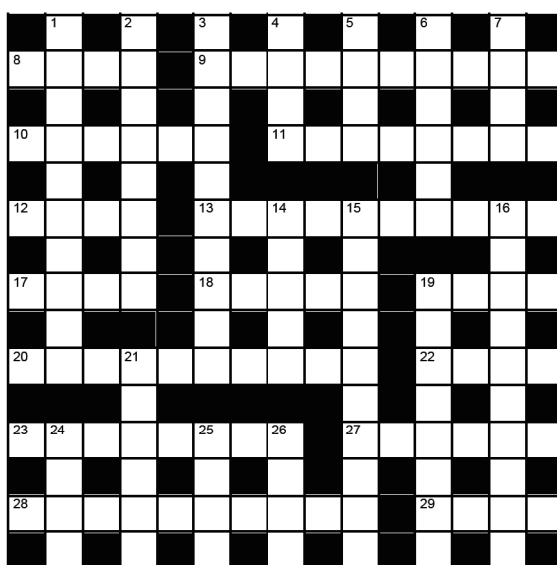


The new flower planter is persuaded into place in Etchinghill and hey presto! it's full of flowers !! A lovely addition to the environment.

#### Across

- 8 Cut down (4)  
 9 One who lives in dreamy indolence (5- 5)  
 10 A set of six similar things considered as a unit (6)  
 11 Reveal through, or as if through, divine inspiration (8)  
 12 In folklore a giant who likes to eat human beings (4)  
 13 Free from slavery or servitude (10)  
 17 "Men always hate most what they \_\_\_ most": Mencken (4)  
 18 The space between two lines or planes that intersect (5)  
 19 The highest point, as of achievement or development. (4)  
 20 In a special manner (10)  
 22 Prepare with dry heat in an oven (4)  
 23 A spacecraft (8)  
 27 The emotion of intense dislike (6)  
 28 Increases many times (10)  
 29 Reveal (4)

#### September 2010 - Occasional Puzzle



A straight crossword this month

©John L Carr 2010

Comments to John at [jon@serenitas.co.uk](mailto:jon@serenitas.co.uk)

#### Down

- 1 They provide compressed hot air propulsion (3,7)  
 2 Insincere praise (8)  
 3 Beautiful people (10)  
 4 Halt (4)  
 5 Anti-social behaviour order (4)  
 6 Perform an after dinner chore (4,2)  
 7 Charges (4)  
 14 A divine and supernatural messenger (5)  
 15 An American comedian originally christened Cornelius Crane (5,5)  
 16 One who watches workers clock on and off (10)  
 19 Aspiration (8)  
 21 A list of corrections (6)  
 24 Consistent with fact or reality (4)  
 25 Have optimistic expectations (4)  
 26 Affected in a dainty or refined manner (4)



**The Tuesday Stompers** performing at Rhodes Minnis raising money for **Help for Heroes**

**Copy deadline for next month's Newsletter is the 18th of the month**

Call Jean Howard on 01303 862488 or e-mail in word.doc format to [jean.howard1@talktalk.net](mailto:jean.howard1@talktalk.net) Money must be received before articles can appear in the Newsletter. A paper copy and money can be left at Lyminge Hardware or the Lyminge Library. For the latest charges please call Jean on 862488

**TURN YOUR UNWANTED GOLD INTO CASH**  
**AT THE NEW INN, ETCHINGHILL ON TUESDAY 21ST SEPTEMBER at 6pm**  
 or Phone Mike on 862855 for a home visit

## DILTON

### MINI SKIP HIRE

Ballast, Hardcore, Sand and Topsoil Supplied

*REGISTERED WASTE CARRIER*

Telephone: 812448 or

Mobile 07799 433754



## M. J. Athow

BUILDER & DECORATOR, EST. 1965

GENERAL MAINTENANCE

Member of the Federation of Small Businesses

Qualified and Insured. Free estimates

Telephone 862616 Mobile 07976 306665

Email: m.j.athow@live.co.uk

Website: <http://mjathow.spaces.live.com>

## AIR LINK CARS

(You pack up, we pick up)

Airport, Seaport & Long Distance Travel Specialists.

The Family Run Business where service really counts

Estate cars and People Carriers

Fixed price 24hrs a day. No extras.

Written Confirmation of booking.

For the Easy Airport Link, Think Air link!

01303 862704 - 07753 760897



## WILL WOODBRIDGE

Carpenter/small works builder

With years of experience

Telephone 01303 863062

**Laing Bennett**  
INDEPENDENT ESTATE & LETTING AGENTS



From our base in Lyminge  
we Sell and Let property  
throughout the Elham  
Valley and surrounding  
Villages.

The Estate Office 8 Station Road, Lyminge Kent CT18 8HP  
T 01303 863393 E [info@laingbennett.co.uk](mailto:info@laingbennett.co.uk)  
[www.laingbennett.co.uk](http://www.laingbennett.co.uk)



## SEATHWAITE BOARDING CATTERY LTD.

Supporting Rhodes Minnis Cat Sanctuary

GREEN LANE, RHODES MINNIS, CT4 6XU

TEL: 01303 862243 (Registered charity 262245)

### ONLY CATS BOARDED, IN QUIET COUNTRY LOCATION

Individually heated chalets. Single cats £5.50 per day, a reduction for 2 or more cats. All cats boarded with us must have current vaccinations against cat flu & feline enteritis.

All profits from the boarding cattery go to support homeless cats in the Sanctuary.

RHODES MINNIS CAT SANCTUARY

has a wide variety of cats available to caring homes.



## Alan J. Boughton

Small Works Builder

All aspects of building work undertaken

40 years experience

Telephone: 862075

## SCRUBBERS - Est. 1988

THE HOME AND COMMERCIAL CLEANERS

One off, regular or moving day 'Blitz'

Oven cleaning – Ironing

Carpet cleaning and more...

For a friendly and reliable service

Free Estimates Tel: 01303 862249



## BRIDGE COTTAGE BED & BREAKFAST

- 4 STARS -

Chris & Alison 01303 862933

Shuttlesfield Lane, Elham, CT4 6XJ

[www.bridgecottagesimplybandb.co.uk](http://www.bridgecottagesimplybandb.co.uk)

[chris@cjelly.plus.com](mailto:chris@cjelly.plus.com)

## R. B. BUILDING SERVICES

General Maintenance, Painting, Carpentry, Plumbing

Upvc fascias and guttering

Fully Insured

For a Free quote please ring Roy Bowling on

Home Tel: 01303 863267 – Mobile 07947 132319

**PRO PHASE**  
**ELECTRICAL CONTRACTORS**  
*Local, Reliable, Professional*



07525 782924  
01303 862082

## HANDYMAN Inside-Out

General maintenance, painting and decorating, tree work, guttering and gutter cleaning, high power jet wash.

No call out charge. No job too small.

**Call Dave on: 01303 863802**

**or 7809 57622**

## COUNTRY FARE

### CATERING SERVICES

Country Weddings, Christenings & All Family Gatherings  
Corporate Lunches, Seasonal Parties & Celebration  
Cakes

Contact **Sally Burr**

Telephone; 01303 863103, Mobile; 07814 610995,

Email: [info@countryfare.plus.com](mailto:info@countryfare.plus.com)

## FRESHLOOK GARDENS

Garden design. Regular lawn mowing service available. General garden work undertaken. Rubbish cleared. Overgrown gardens cleared. Winter pruning and hedge cutting.

For free quotation ring Geoffrey Hogben. KCC registered

Telephone **01303 844680**

Mobile **07866 091633**



## Filehurst Associates

Document/Archive Storage  
Household Storage Units  
Commercial Storage

**01303 239990**

[www.filehurstassociates.co.uk](http://www.filehurstassociates.co.uk)

## QUAD BIKING £39

Ride a 400cc Four wheel drive Quad bike over hills, fields, through the woods and around a disused quarry. Professional Instructor led trek around a superb 80 acre site near Dover. All equipment provided.

Buy an exhilarating experience. Gift Vouchers available

**A great present idea?**

[www.eventmasterkent.com](http://www.eventmasterkent.com)

**Tel 01303 864229**



## OSCAR PET FOODS

QUALITY PET FOODS AT VALUE FOR MONEY PRICES

DIET TO SUIT ALL DOGS

WILDBIRD FOOD AND PEANUTS

FREE HOME DELIVERY

**01303 862200**

[WWW.OSCARS.CO.UK](http://WWW.OSCARS.CO.UK)

## Qualified Reflexologist

Home visits and Gift vouchers also available

Fully insured

Association of Reflexologists

Please contact

**Helen 01303 863255**

## Wilco Plumbing & Heating

Central Heating Installations & Repairs

Gas & Oil Boiler repairs & replacements

**5 Year Guarantee on Worcester Bosch Boilers.**

Local Experienced Engineer, Emergency plumbing 24/7 call out

Registered with the Institute of Plumbing

Gas Safe Registered-OFTEC Registered

**KCC Trading Standards Approved**

**01303 862173 07860 452640**

[paul@wilcoplumbing.co.uk](mailto:paul@wilcoplumbing.co.uk)

[www.wilcoplumbing.co.uk](http://www.wilcoplumbing.co.uk)

## Jackson Plumbing

Property Maintenance

Complete bathrooms and tiling

No job too small. Special rates for OAP's.

Telephone: Home/evening **270691**

or day time **07773 089398**

(please note new mobile number)

## BEAVER BUILDERS

**Jon Daughters**

Conversions

Driveways

Plastering

Roofing

Patios

Decorating

Carpentry

Drains

Plumbing

**FREE ESTIMATES**

**Tel: 01303 863371**

## SIX MILE GARAGE LTD

Stone Street, Stelling Minnis, Canterbury, Kent CT4 6DN

- Car and light commercial servicing
- Class 4 and 7 MOTs and repairs
- Car and light commercial accident repair centre (insurance approved)
- Diagnostics bay with latest equipment
- Tyre bay with four wheel alignment and balancing
- Air conditioning servicing

Tel. 01227 709214 or 01227 709491, Fax 01227 709331

E-mail: [office@sixmilegarage.co.uk](mailto:office@sixmilegarage.co.uk)

## MAXTED BUILDING LTD

We are specialists in House Refurbishments, Extensions, Plastering, Rendering, Roofing, Carpentry, Patios, Driveways, Conservatory Installations and most forms of Property Maintenance.

Contact us now for a free no obligation Estimate on:

Tel: **01227 709524**

Email: [office@maxtedbuilding.co.uk](mailto:office@maxtedbuilding.co.uk)

or via our website [www.maxtedbuilding.co.uk](http://www.maxtedbuilding.co.uk)

Total garden care for all your needs

**TIM MILLETT**

Grass Maintenance

General Gardening

Fencing Repairs & New Installations

Small & Medium Size Tree Work

Turfing

Hard & Soft Landscaping

Free Estimates

Fully Insured

**01303 863676**

**Mob: 07752 880583**

Email: [info@tmhorticulture.co.uk](mailto:info@tmhorticulture.co.uk)



## Peter and Paul Property Maintenance

Have you things that need to be done...in the house, in the garden, to the outside of the house... but never know quite where or when to start, let alone having the time to do it?

Give us a call. We can help, starting off with a free quotation at extremely sensible prices.

Contact Peter Barnes on 07808 775302 - [PBarnes20@aol.com](mailto:PBarnes20@aol.com)

or

Paul Dimmock on 01227 709783 - [PDimmo@btinternet.com](mailto:PDimmo@btinternet.com)

## Personal Computing

For straightforward I.T. advice, solutions and training

Contact:

Steve Ashman

862869

[sra@ashman-consulting.co.uk](mailto:sra@ashman-consulting.co.uk)

## N.P.C. Domestic Services

*Service and Repair of washing machines, tumble driers, dish washers, cleaners and small electrical work*

*For a prompt and friendly service*

Telephone Neil Collard on 248887

Mobile 07798 716044

## LYMINGE HARDWARE

4 Station Road, Lyminge. 01303 862932

Hardware, DIY, Calor Gas, Wood and Timber cut to size, Paint, Wild Bird Food, Plants, Plumbing, Electrical, Salt for Dishwashers and Water Softeners, Building Sand, etc.

The list goes on and on, please call in and see us.

## Auto Economy Centre

**Fully equipped Mechanical Repair & Service Centre  
with the latest diagnostic equipment.**

**Brand New MOT Testing Station - £10 off**

**01303 863656**

**Orchard Garage, Canterbury Rd, Etchinghill**

**[www.autoeconomycentre.com](http://www.autoeconomycentre.com)**

## TOBY'S TREE SURGERY

**Thinning – Reducing – Maintenance – Felling**

ALL TREE WORK, BOTH PRIVATE AND COMMERCIAL,  
UNDERTAKEN BY OUR NPTC TRAINED OPERATIVES

**Professional Friendly Service**

FREE ESTIMATES - FULLY INSURED

Contact Toby Griggs: 07854 098 395

or (01303) 863103

## Hoop Dance Fitness

Lyminge Methodist Church Hall

Fridays 12.1 - 13.00

Beginners Welcome, Have fun and shape up!

To book please: call 07811 420822 or

email: [fitandflexible@yahoo.co.uk](mailto:fitandflexible@yahoo.co.uk)

**[www.fitandflexible.co.uk](http://www.fitandflexible.co.uk)**

## Mark Beer

Landscaping – Groundwork – Trenching

Patios – Paving – Decking – Driveways

Sand Schools – Drainage

**Mini Digger Hire – Self Drive or Operated**

CITB Registered – Fully Insured – 20 years experience

**Phone/Fax 863893 or 07949 291742.**



## D. SCRIVENS

**PLUMBING & HEATING**

Oil Fired Boiler Installation,

Commissioning, Service and Maintenance.

Unvented Hot Water Systems – Solar Water Heating

Central Heating – Water Softeners – Bathrooms – Showers – En suites

Approved 'Aqualisa' Installer

**WATER INDUSTRY 'APPROVED PLUMBER'**

**FULLY INSURED**

**Mobile: 07810 897076**

Email: [scrivensplumbing@aol.com](mailto:scrivensplumbing@aol.com)



**City & Guilds  
Qualified**



Registered  
Business

## K & M LEWSEY LTD

**PLUMBING & HEATING ENGINEERS**

*ESTABLISHED 1969*

REGISTERED PLUMBER

GAS ACOP APPROVED ENGINEERS

**TELEPHONE: 01303 264535**

MANNED OFFICE,

DAYTIME MONDAY TO FRIDAY



Roger Dowle

## The Driving Instructor

Learn to drive or refresh your skills and build your confidence. ADI Qualified, professional & patient tuition.

Call **Roger** on **07870 93 99 36**

**Lyminge based**

## Want help designing your dream kitchen or bathroom?

Visit our friendly showroom – 7 miles from Lyminge



Kitchens & Bathrooms

Evegate Business Centre

Station Road

Smeeth

Ashford

Kent TN25 6SX

tel: 01303 812 985

email: [paul@keyspaces.co.uk](mailto:paul@keyspaces.co.uk)

web: [www.keyspaces.co.uk](http://www.keyspaces.co.uk)

## **YOGA & RELAXATION CLASSES**

Local friendly adult classes suitable for all abilities  
Mon 7pm - Rhodes Minnis Village Hall  
Tues 10am - St Paul's Church Hall, Sandgate  
Wed 10am & Thur 7pm - Elham Village Hall  
Thur 10am - Etchinghill Village Hall  
Tel: **Chris Yorke on 01303 863196**  
or email [yorkes@yoga4freedom.co.uk](mailto:yorkes@yoga4freedom.co.uk)  
For more info visit [www.yoga4freedom.co.uk](http://www.yoga4freedom.co.uk)

**Jim Smith**

**Carpenter/Joiner**

**Over 50 years experience**

**Doors, Windows, Conservatories**

**Stairs, Bespoke Furniture**

**Telephone 01303 862826**



**WHOLISTIC  
WORKS CLINIC**

2 Station Road  
Lyminge  
Folkestone  
Kent CT18 8HP  
01303 863359

[info@wholisticworksclinic.co.uk](mailto:info@wholisticworksclinic.co.uk)

PODIATRY CLINIC  
OSTEOPATHY CLINIC

COMPLEMENTARY HEALTH CENTRE

## **HILLARYS BLINDS LTD**

For your Office Home or Conservatory

- ❖ unbeatable choice
- ❖ expert advice
- ❖ free quotation
- ❖ select at home
- ❖ quoted price includes fitting
- ❖ daytime, evening or weekend appointments

**GORDON BOUCHER**

**01303 862949**



## **HONEST JOHN NEWING**

**Portable Electrical Appliance Testing  
(PAT). DIY Handyman, General**

**Maintenance and Gardening. Reliable &  
Trustworthy. No Job Too Small, call for a free  
quote 01303 862873 or 07758 326824  
Email: [johnspattesting@googlemail.com](mailto:johnspattesting@googlemail.com)**

**Enabling environments for happy, creative and confident children**  
Come to the region's first **Forest School**, (part of Badgers Bridge  
Nursery), where children learn by playing with natural materials in  
an ancient woodland setting.

15 hours free entitlement funding for 3 year olds available from Sep 2010.  
Provider of 'free places for 2 yr olds (subject to eligibility).



For information email **Badgers Bridge Nursery** at  
[badgersbridge@googlemail.com](mailto:badgersbridge@googlemail.com)

Call us on **07967049703**

[www.badgersbridge.co.uk](http://www.badgersbridge.co.uk)

## **Manor Veterinary Clinic**

Manor Veterinary Clinic has moved to:

Shearway Road, Shearway Business Park, CT19 4RH

**01303 273203**

*New premises - same care*

Lyminge surgery: Methodist Church Hall - Mon, Wed & Fri.

## **STERRY FUNERAL SERVICE**

CLIVE STERRY OFFERS A LOCAL FAMILY OWNED FUNERAL SERVICE

Help and advice 24 hours a day

Traditional and Green funerals

Home visits

Pre-paid Funeral Plans & Memorials

Always at competitive prices

**Call 272525, 93 Cheriton High Street**

**Also Lyminge 862540 after 6pm**

## ***The Ovenscleaners***

Kent's leading Domestic Oven Cleaners

Non Caustic, Fresh solutions every clean

Ovens, Ranges & AGA's

Hobs, Extractors, Microwaves & BBQ's

Tel: **0800 328 9342** for your free quote

Local Representative Geoff Cheshire

## **Red Dragon I.T Ltd.**

**'Computer Specialists'**

We offer the 'One Stop Shop' for all your computer requirements.

Our services include repairs, bespoke PCs, maintenance,  
peripherals, consumables and web design.

**[www.rdit.co.uk](http://www.rdit.co.uk) 01303 723456**

## **LYMINGE FOOD AND WINE 01303 862225**

We are offering you...

Household goods \* News & Magazines \* Wines & Spirits  
Beers \* Soft drinks & Confectionery \* Bakery \* Chilled &  
Frozen Food \* Flowers \* Fresh Fruit & Vegetables \* Cash  
Machine \* Western Union Money Transfer.

Pay Point for (Gas, Electricity, Council Rental, Holidays, TV  
Licence, Congestion Charge, Mobile Top-up).

We are always running offers.

## **JUBILEE ORGANIC FARM SHOP**

**01303 862317**

Sadly due to the economic climate the farm shop is now  
closed. We will however continue to rear Organic free-range  
Turkeys and Geese for Christmas. Details of prices / ordering  
will be advertised nearer the time. Similarly we will continue  
to sell Hay / Straw and Haylage, enquiries can be made on  
the above phone number.