

# THE LYMINGE NEWSLETTER

For the communities of LYMINGE, ETCHINGHILL, RHODES MINNIS and POSTLING

<http://www.lyminge.org.uk/>

**November 2011**

Produced by  
**THE LYMINGE ASSOCIATION**

## LYMINGE ASSOCIATION NEWS

***Father Christmas*** We are very pleased to announce that Father Christmas will be delivering presents in Lyminge and nearby on Tuesday 20th December. If you would like Father Christmas to deliver a special present please wrap it up securely, make sure that it has the recipient's name and address and take it to Laing Bennett before Saturday 17th December. There is a small charge of £1 per address [as many parcels as you like to each address] The joy on the recipient's face is priceless as Father Christmas hands over the present. Do join in with this lovely event. It is not limited to children - adults love to receive that unexpected present too !!

**Christmas Lights** - We will be ordering the Christmas trees for all the brackets along Station and Canterbury Roads. The bracket, lights and tree are provided completely free by the Lyminge Association. If you would like to join in and make our village look really festive please phone Adrian on 862699 as soon as possible.

**Lyminge's DRAGON'S DEN** Our special thanks go to Lisa Hodden, Claire Wiggins, Bill Laing and Ian Bennett for being our Dragons. See page 12 for photo. The successful groups were; the Christmas Day Lunch Club, the Baby & toddler Group, the Ethelburga Quilters and the Tayne Centre. Each group received a cheque for £250 and later will provide reports in the Newsletter on their projects.

## Saint Nicholas Fayre

Barbecue  
Christmas Stalls  
Children's Activity Room  
Lyminge Primary School  
Singers  
Decorations ~ Crafts  
Lyminge Handbells  
Cakes ~ Preserves  
Pickles ~ Pies ~ Tarts



### Lyminge Village Hall

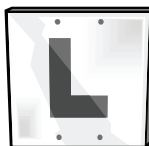
**Saturday 3rd December 2011**

**11.00am until 3.00pm**

**Come Along and Enjoy**

**A Traditional Village  
Christmas Fayre**

Raising funds for St. Mary & St. Ethelburga Church



## Roger Dowle The Driving Instructor

Learn to drive or refresh your  
skills and build your  
confidence. ADI qualified,  
professional & patient tuition.

Call **Roger** on  
**07870 93 99 36**

**Lyminge based**



## **LYMINGE PARISH CHURCH SERVICES & ACTIVITIES**

**Church e-mail:** [lyminge.church@btoopenworld.com](mailto:lyminge.church@btoopenworld.com)

**Church Website:** [www.lymingechurch.co.uk](http://www.lymingechurch.co.uk)

<b>Wed 2nd Nov</b>	<b>ALL SOULS DAY</b> <b>7.30pm</b> <b>Commemoration of the Faithful Departed</b> followed by refreshments
<b>Sun 6<sup>th</sup> Nov</b>	<b>8.00am</b> <b>Holy Communion</b> (CW order 2) <b>10.30am</b> <b>WOW - World of Worship</b>
<b>Wed 9<sup>th</sup> Nov</b>	<b>7.00pm</b> <b>Holy Communion</b> (short 10-15mins said) <b>7.30pm</b> <b>Open House</b> (Bible study & discussion) <b>9.15pm</b> <b>Time of Silence &amp; Quiet Prayer until 10pm</b>
<b>Thurs 10<sup>th</sup> Nov</b>	<b>2.00pm</b> <b>Time for Tots</b>
<b>Fri 11<sup>th</sup> Nov</b>	<b>10.45am</b> <b>War Memorial Service of Remembrance</b>
<b>Sun 13<sup>th</sup> Nov</b>	<b>10.00am</b> <b>Remembrance Day Service</b> <b>10.45am</b> <b>Service of Remembrance</b> at War Memorial
<b>Wed 16<sup>th</sup> Nov</b>	<b>7.00pm</b> <b>Holy Communion</b> (short 10-15mins said) <b>7.30pm</b> <b>Open House</b> (Bible study & discussion) <b>9.15pm</b> <b>Time of Silence &amp; Quiet Prayer until 10pm</b>
<b>Sun 20<sup>th</sup> Nov</b>	<b>10.30am</b> <b>Family Communion</b> with Sunday School <b>6.00pm</b> <b>Evensong</b>
<b>Wed 23<sup>rd</sup> Nov</b>	<b>7.00pm</b> <b>Holy Communion</b> (short 10-15mins said) <b>7.30pm</b> <b>Open House</b> (Bible study & discussion) <b>9.15pm</b> <b>Time of Silence &amp; Quiet Prayer until 10pm</b>
<b>Sun 27<sup>th</sup> Nov</b>	<b>8.00am</b> <b>Holy Communion</b> (CW order 2) <b>10.30am</b> <b>Holy Communion</b>
<b>Wed 30<sup>th</sup> Nov</b>	<b>7.00pm</b> <b>Holy Communion</b> (short 10-15mins said) <b>7.30pm</b> <b>Open House</b> (Bible study & discussion) <b>9.15pm</b> <b>Time of Silence &amp; Quiet Prayer until 10pm</b>

### **Wentworth Craft Group – Wentworth Close - Tuesday 1<sup>st</sup> November**

2pm – 4pm in the lounge. Even if you are not a 'crafty' person, you are still very welcome to come along for a cup of tea and a chat

For more information contact Lynne on 863010

### **Afternoon Tea - Nailbourne Court – Sunday 6<sup>th</sup> November**

This is held in the lounge from 3 - 5pm.

If you would like to come but need a lift, contact Sue on 862221

### **Coffee morning – Wentworth Close - Tuesday 8<sup>th</sup> November**

This is held in the lounge from 10.00-11.30am. Do join us as we meet with the residents of Wentworth Close for coffee and a chat

### **Mothers Union**

For more details about the dates below please contact Sue on 862221

#### **Wednesday 9<sup>th</sup> November**

10.30am in Nailbourne Court Lounge

Jenny Colvin will talk about her life as a missionary in Pakistan

#### **Thursday 24<sup>th</sup> November- 12 midday**

Prayer time in St Gabriel's Chapel at Canterbury Cathedral

### **Time for Tots – Thursday 10<sup>th</sup> November**

This is a short pre-school friendly service for babies and toddlers with toys and action songs. Also a chance for their carers to get together and chat. Refreshments provided

For more information contact Vanessa on 862432 or Trish on 862151

### **Prayer Shawl Ministry Group – Wednesday 16<sup>th</sup> November**

This group meets in Nailbourne Court Lounge from 2.30 -4.30pm to knit prayer shawls and pray for the people they are for. This is a joyous and useful way to bring prayer and healing to our world and everyone is welcome to join in whether you can knit or not. Tea & coffee are provided. For more information contact Madelaine Lewis on 863582

### **Bereavement Support Lunch – Thursday 17<sup>th</sup> November**

Coach and Horses Pub - 12.00 for 12.30pm

All are welcome and transport can be arranged,

Please contact Vanessa on 862432

### **St Nicholas Fayre Craft Group – Tuesday 22<sup>nd</sup> November**

This group meets at 2.00pm at 68 Silverlands Road every month to organise and create articles for the St Nicholas Fayre Craft Stall. Anyone is welcome especially if they have some new ideas for us  
Contact Lynne on 863010

## **LYMINGE METHODIST CHURCH**

Visitors are very welcome to join us at our weekly service at **11am** and invited to share fellowship afterwards with a cup of coffee/tea.

### **Preachers for November:**

6<sup>th</sup> November - Rev Kevin Taylor (incl. Holy Communion)

13<sup>th</sup> November – **Remembrance Sunday:**

10.50am at War Memorial followed by united service in Parish Church at 11.15am.

20<sup>th</sup> November – Dr Geoffrey P Chapman

27<sup>th</sup> November – Mrs Mary Blanch **Reflections**

Alternative, reflective worship 7.30-8.30pm

Wednesday, 30<sup>th</sup> November.

**Monday Fellowship** 2.30-3.30pm Weekly in the Parlour. Feeling lonely? Come and share in a friendly meeting with speakers, games, music, fun, laughter and refreshments.

For Baptisms, Weddings or Funerals, please contact the Rev. Kevin Taylor, on **01303 261500**

## **Rhodes Minnis Church**

This small Chapel in beautiful countryside holds a weekly Sunday Service normally at 9.30am followed by coffee and biscuits. A warm welcome is extended to any visitors

Nov 6 - Mr. Dudley Shipton (includes Holy Communion)

Nov 13 - Pastor Richard Blackwell

Nov 20 - Dr. Geoffrey Chapman

Nov 27 - Mrs. Georgia Reed AND  
at 6pm Valley Service of Light -  
Mr. Dudley Shipton

## **POSTLING CHURCH SERVICES**

**Sunday 6th November** Evensong 6.30pm

**Sunday 13th November** Morning prayer for  
Remembrance Sunday

**Sunday 20th November** Holy Communion 8am

**Sunday 27th November** Family Service 9.30am

## **L.E.T. (Lyminge Ecumenical Team) Prayer Box.**

Please place any prayer requests concerning a bereavement or illness in the prayer box at Lyminge Post Office. It would help to have the name of the person you are praying for but not necessarily your name. These will be included in Sunday worship in all churches and added to private prayer life.

### **Terms and Conditions. Copy deadline is 18th November**

Email your copy in word.doc format to the editor – see below. Your payment must be received before your article or advert can appear in the Newsletter. Please leave your payment in a sealed envelope at the Lyminge Hardware Store or at the Lyminge Library. Your name, organisation and telephone number must be included on the envelope and with your advertisement or copy.

Business adverts cost £9.00 per month or £90.00 per year. Charity adverts and articles from - £1.50 per month, or £15.00 per year depending on size. The annual rate offers 12 entries for the price of 10. Please make cheques payable to 'The Lyminge Association'

If you do not have email, a typed paper-copy can be left with your payment. For further details call the editor - see the number below. If you require a receipt you must include a request for one and a s.a.e. and with your payment.

This page is printed to give readers and organisers the opportunity of planning their events without clashing with existing events which are already 'in the diary'. It is not intended as the sole means of advertising and we do not take responsibility for errors or omissions. Acceptance is at the discretion of the editor. Please send your updates either by email to [page3lym@google.com](mailto:page3lym@google.com) or via the other methods outlined on Page 2. Location and name codes are as follows:

**C&H:** Coach & Horses; **ECC:** Etchinghill Cricket Club; **EVH:** Etchinghill Village Hall; **ERA:** Etchinghill Residents' Association; **ES:** Elham Square; **JF:** Jubilee Field; **KH:** Korf House; **LL:** Library; **LMC:** Lyminge Methodist Church; **LMP:** Lyminge Methodist Parlour **LPC:** Lyminge Parish Church; **LPO:** Lyminge Post Office; **LSH:** Lyminge School Hall; **LVH:** Lyminge Village Hall; **LW:** Lord Whisky; **NP:** Nailbourne Parlour; **NVH:** Newington Village Hall; **PC:** Postling Church; **PH:** Lord Whisky, Park Hse. **RVH:** Rhodes Minnis Village Hall; **RMC:** Rhodes Minnis Church; **SNL:** See NewsLetter for details; **TC:** Tayne Centre.

ONE OFF or IRREGULAR EVENTS					ONE OFF or IRREGULAR EVENTS				
Date	Time	Event	Where	Tel. No.	Date	Time	Event	Where	Tel. No.
5 Nov	6:30pm	Fireworks	LVH	862928	26 Nov	10am	Lympne Christmas Fayre	SNL	262500
8 Nov	7:15pm	TC Talk	TC	862073	3 Dec		St. Nicholas Fayre	LVH	
8 Nov	6pm	Football Training	JF	07977982185	3 Dec	10am	St Martin's Christmas Fayre	SNL	840202
12 Nov		LW Autumn Bazaar	LVH		7 Dec	7.30pm	The Railway Swing Band Concert	LVH	862530
17 Nov	9.30am	Age Concern Coffee Morning	AC	269602	10 Dec	7.30pm	Music for Christmas	SNL	891001
17 Nov	10.30am	RM Toddler Coffee Morning	RVH	SNL	10 Dec	7:30pm	Christmas EnterTAYNEment	TC	862073
18 Nov		Beetle Drive	NVH	272056	25 Dec	12:00pm	Christmas Lunch	LVH	863256
21 Nov	7:00pm	ERA Cinema Club	EVH	862873	25 Dec	12:00pm	Christmas Lunch	C&H	862694
22 Nov	7:30pm	Christmas Gifts Sale	C&H	862694					
23-26 Nov		Dram. Soc. Play	LVH	863393					
26 Nov	10am	RM Cat Sanctuary	SNL						

WEEKLY EVENTS					WEEKLY EVENTS				
Day	Time	Event	Where	Tel. No.	Day	Time	Event	Where	Tel. No.
Mon	10:00am	Open House	EVH	863394	Wed	7:30pm	Cantores Domincae Choir	LSH	01233 503686
Mon	10.30am	Lyminge Larks (Singing)	TC	01233 750223	Wed	7:30pm	Circuit Training	LVH	07951 698 008
Mon	2:30pm	Monday Fellowship	LMP	862164	Wed	8:00pm	Scottish Dancing	EVH	
Mon	7:30pm	Circuit Training	LVH	07951 698 008	Thu	10:00am	RM Toddler Group	RVH	863096
Tues <sup>1</sup>	10.00am	Baby and Toddler Group	TC	863274	Thu	10:00am	Art Group – Morning	TC	211364
Wed	10:15am	Gentle Exercise Class	TC	862465	Thu	2:00pm	Art Group – Afternoon	TC	862972
Wed <sup>1</sup>	5:00pm	Digital Quandary Group	LSH	862972	Fri	9:10am	Circuit Training	TC	07951 698 008
Wed	7:00pm	French Conversation Grp.	KH	862972					

MONTHLY EVENTS					MONTHLY EVENTS				
When	Time	Event	Where	Tel. No.	Day	Time	Event	Where	Tel. No.
1 <sup>st</sup> Mon	10:15am	Health Walk	LVH/ES	862959	1 <sup>st</sup> Fri	6-9:pm	Mexican Night	C&H	862694
Last Mon		Parish Council Meeting	SNL		3 <sup>rd</sup> Fri	6-9:00pm	Curry Night	C&H	862694
1 <sup>st</sup> Tue <sup>2</sup>	7:45	LHS Talk/Event	TC	862972	4 <sup>th</sup> Fri	7:30pm	Beetle Drive	RVH	862616
3 <sup>rd</sup> Tue	2:30pm	Etchinghill W.I.	EVH	863503	1 <sup>st</sup> Sat	10:00am	Farmers' Market	EVH	862832
1 <sup>st</sup> Wed	10:30am	Lyminge Friends	LMP	862427	2 <sup>nd</sup> Sat	10:00am	Postling Ch. Coffee Morn.	PC	863536
2 <sup>nd</sup> Wed	10:30am	Mothers' Union	NP	862221	3 <sup>rd</sup> Sat	8:00am	Coins For Clutter	TC	862164
3 <sup>rd</sup> Wed	7:30pm	RM Evening Circle	RVH	862913	Last Sat	11:00am	Lyminge Poetry Group	LL	863474
Last Wed	7:30pm	Quiz Night	C&H	862694					

<sup>1</sup> In Term Time only

<sup>2</sup> Except Jan. & Feb.



## Lyminge Pre-School

**Passionate about providing excellent  
childcare**

We're proud of our latest Ofsted report which stated that our 'Partnership with parents and carers is outstanding' in every area!

We are a well-established pre-school, with committed, enthusiastic and highly qualified staff. We offer:

- Range of flexible sessions
- Breakfast club
- Outdoor play area with sensory garden
- Spacious indoor facilities

### Did you know...?

K.C.C. will fund up to 15 flexible hours per week for children 3+ years. Also we are a provider for the government's initiative 'free for 2' to provide free hours for 2 year olds.

To discuss your requirements, or to arrange a visit, and meet the team, call 01303 863149 (day) or 07709420736 (eve)

Alternatively, email [admin@lymingepreschool.org.uk](mailto:admin@lymingepreschool.org.uk) and visit our website [www.lymingepreschool.org.uk](http://www.lymingepreschool.org.uk)

## LYMINGE VILLAGE HALL

Proudly Presents

### THE RAILWAY SWING BAND

**With Guest Singers**

**CHRISTMAS CONCERT**

**Wednesday 7 December  
7:30pm**

**Tickets now available from Lyminge  
Hardware £10.00 per person  
or**

**To reserve, phone Niki:  
01303 862530 or Honor: 01303 862928**

**DOORS AND BAR OPEN AT 6:30pm  
Raffle**

**Licensed Bar  
Teas & Coffees, Mince Pies**

Organised by the Village Hall Management Committee Reg Charity 281845

### In Aid of the Lord Whisky Sanctuary Fund

Registered Charity: 2843483

Park House Animal Sanctuary, Stelling Minnis, Kent CT4 6AN

Tel: 01303 862622 Email: [lord.whisky@btinternet.com](mailto:lord.whisky@btinternet.com)  
[www.lordwhisky.co.uk](http://www.lordwhisky.co.uk)

### Please Support our Forthcoming Events:

- **Swalecliffe & Chestfield Autumn Fayre at The Community Centre, St. John's Road, Swalecliffe CT5 2QU** Saturday 5<sup>th</sup> November, 9.30am – 12.30pm
- **Autumn Bazaar at Lyminge Village Hall** Saturday 12<sup>th</sup> November, 10am -1pm. Tables available – ring 01303 862622 to book
- **Christmas Bazaar at the John Baker White Memorial Hall, Lower Hardres** Saturday 26<sup>th</sup> November, 10am – 1pm. Tables available – ring 01303 862622 to book
- **Christmas Celebration & Animal Blessing Service** Saturday 3<sup>rd</sup> December at 2pm, at the Lord Whisky Centre, Rhodes Minnis. Service and Blessing of the Animals by The Revd Coleman

#### 2012

- **Fur, Feather & Exotic Exhibition at Boughton-under-Blean Village Hall** Saturday 25<sup>th</sup> February, 10am – 4pm
- **Boot & Spring Fayre at Park House** Saturday 5<sup>th</sup> May, 12 noon – 3.30pm
- **3<sup>rd</sup> Annual Cyclo-Sportive at Park House** Bank Holiday Monday 28<sup>th</sup> May, from 9am
- **Dog & Owners Fun Day & Boot Fayre at Park House** Saturday 9<sup>th</sup> June, 12 noon – 3.30pm
- **Boot & Summer Fayre at Park House** Saturday 28<sup>th</sup> July, 12 noon – 3.30pm
- **Boot & Autumn Fayre at Park House** Saturday 8<sup>th</sup> September, 12 noon – 3.30pm

PBarnes20@aol.com

### FARMERS and CRAFT MARKET

**ETCHINGHILL VILLAGE HALL**

**St Mary's Drive, Meriden Park CT18 8 NQ**

**Saturday 5 November**

**10.00am – 12.30pm**

First Saturday in the Month

Contact Number for bookings

Bryan – 01303 862832

**We now have an excellent Greengrocer and  
Pork Butcher**



**IN EAST KENT**

**Wednesday 2<sup>nd</sup> November CHRISTMAS FAYRE** and coffee morning. Christmas stalls. Get your cards and calendars. Many Christmas goodies and our great selection of cakes. 9.30am onwards

**Wednesday 7<sup>th</sup> December** Coffee Morning with the Draw of the Christmas Raffle. 9.30am onwards

**All at: The Holy Trinity Church Hall, Sandgate Road, Folkestone**

Contact Mrs D Ashdown 01303 251980

## Lyminge Village Hall

### 100 CLUB RESULTS

The winner of the  
**New Village Hall 100 Club**  
was drawn at the Coach & Horses  
on 30 September 2011

The first winner was  
**Selwyn Nichols**

If you would like to join our new club then  
please contact  
**Niki – 862530 or Sue- 862696**

Village Hall Management Committee Reg Charity 281845

## Newington Village Hall

Reg Charity No 302812

Friday 18<sup>th</sup> November 2011

### Beetle Drive

For more information please ring  
Kirsty 01303272056 or  
Karen 01303277950

## Seasoned Mixed Logs

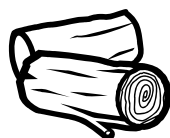
For Sale

£70 for large truck load

Free delivery

Tel: 01227709562

Mob: 07772698899



Hall Redevelopment Fundraiser

### Wandering in Flanders Fields

a talk with slides by public speaker

**Melanie Gibson-Barton**

free tea/coffee at 7.15

Talk at 7.30 pm **Tuesday 8<sup>th</sup> November**

price £3 – all welcome

Tayne Centre (Methodist Church Hall)  
Church Road, Lyminge

## Slimming World



*the club  
with the  
big heart!*

**SAVE  
up to  
£5**

**FREE  
online  
support**

Thursdays 7.30pm  
LYMINGE Bowls Club  
Woodland Road

Tel: Kirsty 07980 940368

**0844 897 8000**  
[www.slimmingworld.com](http://www.slimmingworld.com)

*Slimming*  
WORLD  
because you're amazing



### ELHAM VALLEY MONDAY HEALTHWALKS

The weekly Healthwalks from  
Lyminge and Elham will be  
suspended over the winter months,  
November to March (incl).

During these months there will be an organised  
MONTHLY walk along the Elham Valley Way on the  
first Monday of the month.

The first of these on Monday 7<sup>th</sup> November will  
depart from Lyminge Village Hall at 10.30am,  
destination Elham. Walkers can do either the return  
trip with a coffee stop in Elham, or one-way only  
and catch the bus back.

The departure points will alternate as before, with  
the December walk starting at Elham Square.

The weekly walks will re-commence on Monday 2<sup>nd</sup>  
April 2012. Any queries please contact Val 862959,  
or Betty 840547

### YOGA & RELAXATION CLASSES

Local friendly classes suitable for all ages & abilities

Mon 1.30pm Elham Village Hall

Mon 7.00pm Rhodes Minnis Village Hall

Thur 10.00am Etchinghill Village Hall

Thur 7.00pm Elham Village Hall

Tel: **Christine Yorke 01303 863196**

Email: [yorkes@yoga4freedom.co.uk](mailto:yorkes@yoga4freedom.co.uk)

## Lympne Village Hall Christmas Fair

Charity Registration number 277548

**Saturday 26th November**

**10am-1pm**

Lots of Gift ideas, Assorted Craft Stalls, Christmas cards, Cakes, Tombola, Refreshments, and Father Christmas will be paying a visit.

Plenty of free parking. Look forward to seeing you there.

Sheila Woods 01303 262500

## Etchinghill W.I.

Members were welcomed to the 89th birthday meeting by the president, Barbara Syrett with neighbouring W.I. members joining in the celebrations. A birthday posy was presented to Julia Tappenden.

It was a most very afternoon with our speaker, Bernard Locket telling of his experiences of growing up in post war London.

A homemade Christmas cake and other cakes were auctioned by Barbara Syrett, also a well stocked craft sales table proved very popular. The afternoon concluded with a typical W.I. birthday tea, the hostesses being the committee.

Next meeting will be the annual general meeting on Tuesday, 15th November at 2.30 in the village hall.

For further details please contact Barbara Syrett on 01303 265229 or Rita Warner on 01303 863503

## COINS FOR CLUTTER



TABLE BOOT FAIR

**ON SATURDAY 19 November**

Raising funds for  
Tayne Centre renovation group  
Lyminge Methodist Church

**TO BOOK A TABLE PHONE FLORRIE  
ON 01303 862164**

TABLES COST £5 FOR 1 OR £8 FOR 2

TIME 7.30AM FOR STALL HOLDERS

8AM TO 12.00 NOON FOR CUSTOMERS

**LOCAL FRESH PRODUCE, HOME MADE CAKES  
AND PRESERVES, BRIC-A-BRAC and CRAFTS**

Any orders for Christmas, for example fruit and veg, cakes and sundries, meat from our pork butcher, etc may be placed Oct / Nov for Dec

17th pick up

**BACON ROLLS TEA AND COFFEE**

## LYMINGE HISTORICAL SOCIETY

**TUESDAY 7<sup>th</sup> December**

**7.45pm**

**at Lyminge Methodist Church Hall**

**Pitt the Younger and The Martello Towers**

**A talk by Geoff Hutchinson**

**Non-members welcome.**



Shepway Volunteer Centre is urgently looking for more volunteer drivers in the Elham/Lyminge area to help with its Transport Service.

Drivers use their own vehicles to take elderly or disabled local residents to medical appointments or on essential shopping trips. Drivers are paid expenses so that they are not out of pocket.

Could you help? All you need is a clean driving licence, a caring disposition and a little time to spare.

Please call Shepway Volunteer Centre 01303 259007

## MUSIC FOR A CHRISTMAS NIGHT A magical evening of live music and festive fun

**Saturday 10<sup>th</sup> December 2011**

**Snowdrop, Swan Lane, Sellindge**

**7:30pm**

**£12.50 pp**

**includes hot supper and welcome drink**

**Music by acoustic duo**



**"Twice As Nice"**

**and other local talent**

**Raffle, games, prizes**

**[www.eventbook.org.uk](http://www.eventbook.org.uk)**

**Tel: 01303 891001 / 07968 233890**

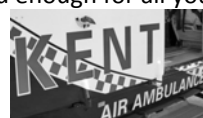
Organised by North Downs West Branch of  
Folkestone & Hythe Conservative Association

## A BIG THANK YOU From Eileen Edwards.....

..to all who took part in the Charity Golf Game at Etchinghill Golf Club on 30<sup>th</sup> September in aid of Kent Air Ambulance. I am so grateful and proud of the £900 we raised for their Marden Depot.

I would like to say a huge thank you to the whole village that have been so caring and supportive of me and my family following my accident. I couldn't wish for a lovelier village to live in. Thank you too for all the donations of cash and prizes from villagers and shops towards the raffle on the Golf Day.

To Ray Smith, a special thank you for all your help and support on the day. I can never thank you enough for all your kindness.





## ***Lyminge Dramatic Society***

Well, we are almost there – our latest dramatic offering, “**The Flint Street Nativity**”, will play to audiences later this month, beginning **Wednesday 23<sup>rd</sup> November until Saturday** of the same week.

The characters are coming to life brilliantly. Herod, who doubles as Joseph, is hilarious in his constant play-acting of “A Question of Sport”. The Inn keeper is sardonic and subversive – even his mother doesn’t like him - and the little shepherd remains completely obsessed with bodily fluids! A press review of the time said, “The play exposes what an ungodly snake pit of paediatric power-politics the staging of the average Nativity play can be.” You really shouldn’t miss it.

**Tickets are £7 with £5 concessions available on Wednesday and Thursday** for senior citizens and children of school age. **The box office is Laing Bennett 8 Station Road, Lyminge**; tickets can be booked by phone 01303 863393, but should be paid for before the show.

**Mary-Claire's Country Kitchen** is offering theatre-goers a 20% discount for an evening meal before the show - opening Wed 26th, Thu 27th and Friday 28th evenings - booking is essential 01303 864222. Please show your tickets to get the discount! This proved very popular during the last show (Dad's Army) so Claire is opening extra nights for the coming show, if the demand is there.

Finally, if you would like advance notice of future productions in the form of an email, please leave your email address with Laing Bennett and we will be happy to send you periodic newsletters.

Looking forward to seeing you in Bethlehem!



## **AGE CONCERN** *Concern* **HYPHE & LYMINGE**

**CHRISTMAS COFFEE MORNING** on Thursday 17<sup>th</sup> November between 9.30am and 12pm at our Jubilee Centre in Everist Ct, Station Road. There will be handmade cards and gift ideas, homemade cakes, preserves and chutney, Christmas cakes, fresh fruit and vegetables, free range eggs, a raffle and tombola. Please come and support us, proceeds will go towards our Christmas party.

**MEALS ON WHEELS – DELIVER A DIFFERENCE.** Did you watch the recent Hairy Bikers series about meals on wheels? Would you like to help us to deliver a difference? We require volunteers for our Lyminge and Hythe centres to deliver meals to clients homes. Volunteers provide a lifeline to often lonely people and the lunch call may be their only human contact of the day. Runs are kept short so that volunteers do not feel pressured to rush and are able to give the time they would like to the person. We provide the service 7 days a week and offers of help whether weekly, monthly or very occasional would be most welcome. Role is subject to an enhanced CRB check.

If you could help or would like any further information about our centre or the other exciting volunteering opportunities we have please contact **Matthew Martin on 01303 269602**.

### **Rhodes Minnis Evening Circle**

Margot Bonny, one of our members, gave us a most interesting and informative evening on the History of Illustrating Children’s Books. The first book came from Germany in 1580, and Margot showed us many delightful books with lovely illustrations.

Our next meeting is on the 16th November when Brian Doorne is taking us on a journey from "Dover to Dungeness".

We meet at Rhodes Minnis Village Hall at 7.30pm and everyone is welcome.  
Marion Hoare 862913



Hall Redevelopment Fundraiser

### **An Evening of Christmas EnterTAYNEment**

starring **Dean Hayward** and **The Haywardians**  
supported by **The Lyminge Dramatic Society**  
and other performers

Curtain up at 7.30 p.m.

**Saturday 10<sup>th</sup> December**

100 tickets only ~ price £5 including refreshments.  
Phone Mike 862073

Enjoy a fabulous night out set in an intimate setting at  
the **Tayne Centre**



## Cantores Dominicae

**Don't just sing in the shower - come and sing with us!!**

Local choir is holding an 'Open Evening' on Wednesday 23 Nov at 7.30pm in Lyminge School - refreshments will be provided.

All welcome - no need to book, just turn up.

Can you sing? : Have you ever sung in a choir? : Would you like to learn how to sing and be part of this friendly, sociable group?

Rehearsals: Wednesdays 7.30pm - 9.30pm  
Lyminge School Hall.  
Only £2 per week subs!!

Call - Maddy for more info on 07717 500060 or visit [www.cantoresdominicae.co.uk](http://www.cantoresdominicae.co.uk)

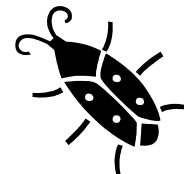
LOOK FORWARD TO SEEING YOU THERE!

## Rhodes Minnis Village Hall

# Beetle Drive

**Friday 25th November 7.30pm**

Come and spend a family evening  
Have some old fashioned FUN  
New players welcome  
Adults £2, children 50p  
Includes refreshments  
Raffle



## LYMINGE FRIENDS

**Meetings are 10.30 - 12.30 in the Methodist Church Parlour**  
**Everyone welcome.**

**Wednesday 2<sup>nd</sup> November** - A talk on the Coast Guards - Derek Smith *followed by the Members Bring and Share Lunch*

**Wednesday 16<sup>th</sup> November** - Shopping trip to De Bradlei Wharf

**Wednesday 7<sup>th</sup> December** - Christmas Social, Secret Santa and Mince Pies

**Saturday 31<sup>st</sup> December** - New Year's Eve Lunch in China China

**Wednesday 4<sup>th</sup> January** - Members Christmas Lunch in Rose & Crown Stelling Minnis

**Wednesday 18<sup>th</sup> January** - **Note date!** *January Talk* - details to follow.....

No membership fees - only £1.50 per month. For more details contact Marian on 862015

## Rhodes Minnis Toddler Group

# Coffee Morning

**Thursday 17<sup>th</sup> November**

**10-30am to 12 noon**

**At Village Hall**

**Raffle and Sales Table**

**Everyone Welcome**

## Hoopla Fitness and Fun

**Fridays 4.30-5.30pm**

**Lyminge Methodist Church Hall**  
**starting 7th October**

All ages and abilities welcome  
Come along and give it ago, hoops provided.

Phone: 07811 420822

Email: [fitandflexible@yahoo.co.uk](mailto:fitandflexible@yahoo.co.uk)

## Gentle Pilates

**Fridays 11am-12pm**

**Lyminge Bowls Club**

All ages and abilities welcome

Spaces are limited

Please phone 07811 420822 or

Email: [fitandflexible@yahoo.co.uk](mailto:fitandflexible@yahoo.co.uk)



## Coach & Horses



### Mexican Night

Friday 4th November - 6-9pm

### Curry Night

Friday 18th November - 6-9pm

### Christmas Gifts & Card Sale

Tuesday 22nd November - 7.30pm start

### Quiz Night

Wednesday 30th November - 7.30pm start

**Christmas Party bookings are now taken.**

Christmas Day fully booked.

**Contact : 01303 862694**



## RHODES MINNIS CAT SANCTUARY

(Registered Charity No 262245)



### Christmas Fair



Holy Trinity Church Hall,  
Sandgate Road, Folkestone  
**Saturday 26<sup>th</sup> November 10am-1.30pm**  
Presents for you and your cat  
Cards\*Books\*Cakes\*Jams\*Bric-a-brac\*  
Tombola\* Refreshments  
Entrance free  
**All proceeds go to feed the homeless cats at the  
Sanctuary over the Christmas period.**

### FOOTBALL TRAINING 16-19 YRS OLD

We are looking at starting a football development squad in the Elham Valley.

To make this happen, we need both helpers and young people to come training which will be held on a **Tuesday evening at Jubilee Field, Lyminge, 6-8pm.**

The first session to gauge interest will be held on **Tuesday 8<sup>th</sup> November** so please come along and have a kick around.

If it is successful with enough players and helpers, we will arrange some friendly games against other sides and continue training sessions.

Ultimately, if some of the lads do well in training they may be scouted for the existing sides in the area although it will not be run by the teams.

Please call Gary Harrison KCC Warden 07977982185  
Ross Butcher 07967342226

### LYMINGE BABY AND TODDLER GROUP

Calling all parents, grandparents or carers with children under school age at a loose end on Tuesday mornings. We meet every week [during term time] at the *Methodist Hall* [now known as the *Tayne Centre*] in *Lyminge* between 10.00am -12 noon to give the children a chance to play and interact with others the same age.

We offer a wide range of craft and play activities, including trikes, bikes and slides to painting books and jigsaws.

We charge £1.50 per session (1<sup>st</sup> session free) which includes 'half time' refreshments for both adults and children.

For more information 'phone Karen 01303 863274

### RHODES MINNIS TODDLER GROUP

We are a small group open to mums, dads, grandparents and carers who meet on Thursday mornings at Rhodes Minnis Village Hall any time between 10 am – 12 noon during term time.

Come and have a tea/coffee while having a friendly chat as your child plays. £1.50 per session (first session free)

'Phone Elaine on 01303 863096 for more information

## Etchinghill Update November 2011

### Farmers' Market

The October Raffle prize was won by Mrs. Mead from Folkestone who just happened to be visiting Etchinghill on that day. Farmers' Markets are held on the first Saturday morning of each month, except January, from 10 to 12.30 in the Village Hall.

### Open House

Come along every Monday morning (except Bank Holidays) for coffee and a chat from 10-12.00 in the Village Hall. This month's special meetings will be:

**7th November** Bring and Share Lunch – a list showing what dishes people are prepared to bring will be drawn up nearer the date.

**14th November** - Robert Gill will give an illustrated talk entitled "Volunteering at the Cathedral" – the Cathedral in question is Canterbury.

### Etchinghill Residents' Association

Etchinghill Cinema Club

**Monday 21st November** starting at 7.00 pm at Etchinghill Village Hall our next screening of "True Grit" (the remake with Jeff Bridges). Screening is free for those who have prepaid, otherwise it is £5. Membership is free.

There will not be a screening in December. Our next screening date will be 16th January. We will advise all members of the film title nearer the date. Keep an eye on our website [www.Etchinghill.org](http://www.Etchinghill.org). For further information please contact Barbara on 01303 862873.

### ERA AGM

**Sunday 27th November** 10.30 am at Etchinghill Village Hall. All Welcome, refreshments available. Please come along and put forward your suggestions as to how we can improve and enrich life in Etchinghill.

**Christmas Tree Lighting Ceremony-Saturday 3rd December** at Meriden Park. Carols will be accompanied by Penny Keutenius on the accordion. Help the lighting of the Tree ceremony by bringing along your own lantern. Mulled wine and mince pies as usual in the village hall afterwards.

### St Martin's Church Christmas Fayre

In Elham Village Hall

**Saturday 3<sup>rd</sup> December**

10am – 2pm

Stalls, refreshments and Father Christmas and his elf assistant.

To book your table (£10 each) contact Caroline on 01303840202 or Sue on 01303844640

### To all Runners / Joggers (of ALL abilities) in the Lyminge area

I'm a runner myself and see loads of you around the village and surrounding countryside at various times of the day.

I'm always looking for more motivation, and encouragement and I am sure you are too; therefore I was wondering if any other runners wanted to go for runs with others, socialise, network, share routes, tips & advice, attend race meetings together & create a team spirit.

Anybody interested, please visit  
<http://www.LymingeRunners.org.uk> and join in.

See you out on the trails. Pete Lindley



## TAYNE CENTRE Hall HIRE



Previously known as the  
Lyminge Methodist Church Hall

**1 June to 30 September** £5.50 per hour  
£19.00 per 4 hour session £35.50 full day

**1 October to 31 May** £8.00 per hour  
£26.50 per 4 hour session £46.50 full day  
(including heating)

### Parlour

All Year £5.00 per hour, with use of electric -  
over heaters, if required.

### Overnight Stays

1 June to 30 September £33  
1 October to 31 May £44

For any enquiries please call **07971 722 401**

## Callings Again All Broadband Users

To the 18% of all broadband users who responded to my appeal in the July Newsletter, **a big thank you.** We still need a far greater response if our next bid is going to stand any chance of success. You may have noticed an increase in the frequency of your inability to watch a programme in real time, as opposed to playing a downloaded saved programme, even the download time can be ridiculously long. As the number of Broadband users increases, the frequency of poor reception is going to increase unless something is done to improve our Lyminge exchange.

To the remaining 82% of users if you wish to receive a satisfactory service in the future please help us and yourselves now by completing as soon as possible the following two steps:

- 1. Submit the survey form available on [www.broadband.rdit.co.uk](http://www.broadband.rdit.co.uk)**
- 2. Go to [www.broadbandspeedchecker.co.uk](http://www.broadbandspeedchecker.co.uk) and anonymously record your results on the village map.** Visit this site particularly when your reception is low speed. However infrequently you use the internet your input to the survey is vital, so please respond. Thank you. Philip Hawken (Parish Councillor)

## Lyminge Village Hall

Lyminge Village Hall, a Hallmark accredited hall offers an excellent venue for up to 200 people and can meet a variety of requirements with its small Committee Room, larger Club Room and the Main Hall with bar and servery and of course a large stage. We continue to improve the facilities with upgraded toilets and storage. The Management Committee hold regular fundraising events which are advertised elsewhere in the Newsletter. With the full stage now available, concerts and band bookings can be accepted. With excellent parking, kitchen facilities and plenty of tables and chairs our Village Hall makes a great place for larger celebrations or charity events.

Price example: Friday or Saturday evening £55.00  
For full price details and availability just give

**Jacqui Storey a call on 862044**

## ETCHINGHILL VILLAGE HALL HIRE FEES

### Occasional Users

Standard weekday rates (08h30 to 23h00)

Hourly rate – up to 4 hours ..... £7.00  
1 Session – 4 continuous hours ..... £21.00  
2 Sessions – 8 continuous hours ..... £42.00  
All-day rate ..... £70.00

Weekend rates (08h30 – 22h00 Sundays) will be  
£10.00, £30.00, £60.00 and £100.00 respectively

Discounted rates are available for **Etchinghill Residents** who are occasional hirers and for **Regular Users** after 12 months' hiring.

**The Committee Room** costs £6.00 per session for **Regular Hirers**, £6.00 per hour for **Non-Residents** and £5.00 per hour for **Residents**.

All-day hire for **Weddings, Banquets and Commercial Functions:**

**£100.00 for Residents**  
**£200.00 for non-Residents.**

For bookings and enquiries, please contact **Eileen** on  
**01303 862832.**

## RHODES MINNIS VILLAGE HALL

Are you looking for a hall in which to hold Practice sessions, private party/function or Meeting?

Rhodes Minnis Village Hall has the capacity to take parties of up to 100 and has kitchen facilities at no extra cost.

### **Rates:**

Sun – Fri £14.00 per session. £34.00 per day  
Sat - £20.00 per session. £27.00 evening session  
£55.00 per full day.

### **Session Times:**

AM session 8.30am – 12.30pm  
PM session 1.30pm – 5.30pm  
Evening Session 6.00pm – 11.45pm

A £25.00 returnable deposit is payable in advance. Electricity will be charged at 18p per unit. Regular users will be given a special reduced rate.

**For details contact Mick or Dorothy Athow on  
01303 862616**

## Sibton Park Cricket Pavilion Club

Having a party? Need a local venue?  
Why not take advantage of Sibton Park Cricket Club's lovely pavilion?

We have a bar with club price drinks & friendly efficient staff.

There is capacity for up to 100 guests. For further information or to make a booking please

**Contact Lesley Kirk, Tel: 01303 862366**



## Lyminge



## Handbells



With planning for the festive season now on our minds it is timely to mention how great handbells sound when playing carols and Christmas tunes. We shall be playing as usual at St Nicholas Fayre and for the Crib Service and Midnight Mass in the Parish Church. But if you would like us to come along to your own private celebration we are more than happy to oblige. All we need is a large table, room for up to 12 players and a donation of at least £40 for our new charity, the Nepali Children's' Trust. A contribution to travelling costs is asked for if bookings are at locations more than 5 miles from Lyminge. Weekends and evenings only please and naturally we need plenty of advance notice as we do get booked up. Want more info or make a booking?

Just call Ro Edmond on 863201 or email [welldorm@aol.com](mailto:welldorm@aol.com)

## Lyminge Baby & Toddler Group

*Would like to say a huge thank you to the Lyminge Association, for their generous donation of £250.00 at the "Dragon's Den" Evening.*

*As a result we can now renew, revamp and recycle our stock of toys, play equipment and storage. Watch out for notification of a re-launch event in the New Year!*

## Lyminge Heritage Questions and Answers

In the past I have written about notable people who have lived in our locality. This time I am going to propose somebody who I think should probably be added to that list because of his secret bravery during World War Two. I am going to write about Bill Aggis. I have been given the following information by local residents who remember Bill. I understand that he arrived in Lyminge before WW2 with little more than the clothes he stood in. He obtained a job with Hubert Finn-Kelcey, Lyminge's estate agent and auctioneer, and gradually worked his way up, to become very important to the business. He worked in the office in Station Road, in Lyminge and some wondered why he was not called up during the war. In fact he was a member of the local Auxiliary Unit otherwise known as the 'British Resistance'. Nominally, this was part of the Home Guard but was formed in preparation for a Nazi German invasion. Locally, there would have been an Operational Patrol (that would have been involved in combat) and a Special Duty Section (that would provide intelligence and communications.) The Operational Patrol would have consisted of about six men, with good local knowledge; they were trained in guerrilla warfare, including unarmed combat, assassination, demolition and sabotage. The members of the Special Duty Section were trained to gather intelligence about enemy activity (by identification of vehicles, high-ranking officers and military units) which was written in reports that were then communicated through secret messaging systems such as 'dead letter drops' and by secret radio transmitters. Each Operational Patrol would have expected to have been self-functioning if the invasion happened and would have had a secret operational base built underground in local woodland. Back with Bill Aggis, it is known that he kept his rifle, ready for immediate use, at work in Station Road and that he received secret coded messages. He also used to go to a secret underground hiding place in Postling Woods where there was radio transmitting equipment. It is not remembered exactly where this 'Operational Base' is situated. If it still exists, it is on private land and would be dangerous to enter now. Nobody should attempt to find it. If the invasion had happened, Bill would have been expected to have been operational behind the enemy lines. Some have estimated that the average life expectancy of the Operational Patrol members after an invasion would have been about two weeks. Although the threat of invasion lessened as the war progressed, the Auxiliary Units were not disbanded until 1944. So, Bill Aggis was, in fact, a brave man who was prepared to put his life on the line, if the Nazi forces ever invaded, rather than a 'draft dodger.' Because of his secret position he could not tell anyone about his role in the defence of Britain. Undoubtedly there were other local members of the Auxiliary Units who should equally be lauded. If you know of any, let me know and I will write of their activities.

That's all for this month, next month I will write about some more local war time memories that have been passed on to me. If you have any questions or answers about local heritage please contact me.

Alistair Bailey (t:864235 e:abailey447@aol.com)

## LYMINGE WEATHER STATISTICS - September 2011

Thanks to Mr Godden for these weather statistics and notes.

	Temperature (°C)	Air Pressure (hPa)	Wind Speed (mph)	Total Monthly Rainfall
<b>Maximum</b>	27.0 (2/9/11)	1018 (26-30/9/11)	43 (6/9/11 - N)	61.0mm (2.40 inches)
<b>Minimum</b>	7.0 (17/9/11)	1007 (11-14/9/11)	<b>Highest Daily Rainfall</b>	12mm (0.47 inches)

The reason for our 'Indian Summer' was that Kent was situated just west of the centre of an area of high pressure for most of the month. This drew in southerly winds that were warm and dry.



# Out and About

*Do you have any photos of local events or local groups in action, please call 01303 862699*

## Lyminge's DRAGON'S DEN....



Our four Dragons who did a really fantastic job asking searching questions and then deciding upon the winners and finally presenting the cheque to the successful groups.



Lyminge Friends enjoying their annual get-together at the Gurka Palace on 14th October



The Lyminge Association's AGM this year was rounded off with a very successful Dragons' Den when seven groups pitched for awards of £250. The pitches were excellent and the Club Room at the Village Hall was almost full.

**The Lyminge Association's Garage Safari** enjoyed fine weather, in fact some said it was so fine that some folk missed the bargains to go to the beach !! Thanks to all those who supported this event, and paid their entry fee, which enables the Association to raise funds to help village organisations



Once again Gabor Thomas of Reading University gave a full house an update of the archaeological digs that have taken place in Lyminge over the past few years. Lyminge is fast becoming a very important site to archaeological research.



## Mystery Photo

Last month's picture was the Christmas tree bracket on the wall of Lyminge Hardware. Don't forget if you would like to have a bracket see the Lyminge Association News on the front page !! Have a go at this month's picture !