

THE LYMINGE NEWSLETTER

For the communities of LYMINGE, ETCHINGHILL, RHODES MINNIS and POSTLING

<http://www.lyminge.org.uk/>

April 2014

Produced by
THE LYMINGE ASSOCIATION

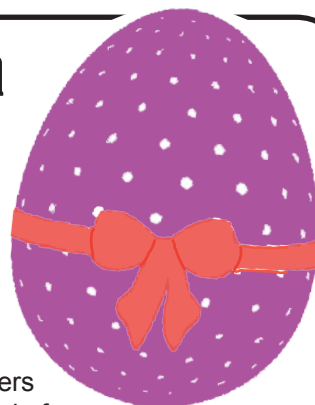
Happy Easter from The Lyminge Association

Spring Garage Safari ~ Maybe we'll get it right this time ! The date is Saturday 26th April, with a Table Fair at the Tayne Centre. It is just the time to have that Spring Sort out and turn those unwanted items into CASH !! Registration forms are available from Sunny Cottage, Canterbury Road. [Next to Claire's Country Kitchen] Please ensure that you register before the cut-off date to be able to participate. For further information please call 01303 863197.

Flower Troughs ~ You may have noticed that two rectangular flower troughs have appeared next to the Library. These were moved by a team of volunteers from outside the old Green Insurance offices. Would you like to join the growing band of volunteers who help keep our village special and take on looking after one or even both of these troughs ? The Lyminge Association will be filling them with soil shortly. Please call Adrian on 862699.

First World War Presentation on June 14th at the Village Hall. Don't forget to put this in your diaries. There will be several showings during the afternoon and one in the early evening. If you have an old photograph of Lyminge 100 years ago to include in the presentation, we would love to hear from you - call 862699.

Bert Lewis ~ The Lyminge Association is very sad to report that our President, Bert Lewis, died on 14th March. See also page 12, the Parish Council pages and next month there will be a tribute to Bert.



ROUNDWOOD HALL PAY & PLAY GOLF CLUB

Behind the line of conifer hedges on Stone Street (B2068) you will find a friendly & welcoming short golf course.

Dust off your clubs & spring into action!!!
10% off green fees with this advert until 31 May 2014.

9 holes - £8 18 holes - £12
£2 more Weekends & Bank Holidays

Stone Street, Lyminge, Folkestone,
CT18 8DJ. 01303 862260

New 7 day ticket
only £35.00



FRIENDLY

RELAXED

AFFORDABLE

www.roundwoodhall.co.uk

LYMINGE PARISH CHURCH SERVICES & ACTIVITIES

Church e-mail: office@lymingechurch.co.uk

Church Website: www.lymingechurch.co.uk

We would be very grateful for donations towards the flowers needed to make the church look lovely this Easter

If you can help please contact Andree 863182

- Wed 2nd April** 7.00pm Holy Communion (*short said*)
7.30pm Lent Course – Building on a Rock
Coffee served from 7.20pm
- Fri 4th April** 12.30pm Lent lunch in the Tayne Centre
- Sun 6th April** 8.00am Holy Communion (*CW order 2*)
11.00am WOW (Ways of Worship)
- Wed 9th April** 7.00pm Holy Communion (*short said*)
7.30pm Lent Course – Building on a Rock
Coffee served from 7.20pm
- Fri 11th April** 12.30pm Lent lunch in the Tayne Centre
- PALM SUNDAY**
- Sun 13th April** 8.00am Holy Communion (*CW order 2*)
11.00am Sung Eucharist – ‘The Passion’
- HOLY WEEK**
- Mon 14th April** 7.30pm ‘The Passion’ film show
- Tues 15th April** 7.30pm Stations of the Cross
- Wed 16th April** 7.30pm Agape Meal – *please contact Andree Hamer 863182 to book a place*
- Thurs 17th April** 7.30pm Eucharist of the Last Supper
Washing of the feet and watch
- Fri 18th April** 10.00am Children’s Stations of the Cross
followed by hot X buns
- 12.00 noon to 3.00pm Remembering Jesus on the Cross
Devotion before the Cross- one hour service followed by two hours of silence for people to come and go as they please

EASTER SUNDAY

- Sun 20th April** 11.00am Family Holy Communion
- Wed 23rd April** 7.00pm NO Holy Communion
7.30pm NO Open House
- Sun 27th April** 8.00am Holy Communion (*CW order 2*)
11.00am Sung Eucharist
3.30pm to 5.30pm Messy Church
This is aimed at kids & their parents and will involve crafts of all kinds. There will also be a short 10 min service followed by afternoon tea.
- Wed 30th April** 7.00pm Holy Communion (*short said*)
7.30pm Open House

Bible Study & Discussion - coffee served from 7.20pm

Coffee Morning – Tues 8th April – 10.00am to 11.30am

*In the lounge at Wentworth Close - everyone is welcome
Contact Lynne 863010 if you would like to come but need transport*

Mothers Union – Wed 9th April – 10.30am

*A talk by Trudy McGregor – ‘My Son’s Work in Africa’
in the lounge at Nailbourne Court Contact – Sue Rawlings 862221*

Prayer Shawl Ministry Group – Wed 16th April – 2.30pm

*This group meets once a month in the lounge at Nailbourne Court to knit prayer shawls & pray for our world. Tea and coffee are provided
Contact Madelaine Lewis 863582*

Ethelburga Luncheon Club – Thurs 17th April - 12.00 noon

*at the Coach and Horses Public House
Everyone is welcome and transport can be arranged,
Please contact Lynne Lane – 863010*

PADDLESWORTH PARISH CHURCH SERVICES

- Sun 6th April** No Services
- Sun 13th April** 9.30am Holy Communion
- Sun 20th April** 6.00am Early Morning Watch
*New fire & lighting of new Paschal Candle;
First communion of Easter followed by breakfast*
- Sun 27th April** 6.00pm Evensong

LYMINGE METHODIST CHURCH

Visitors are very welcome to join us at our weekly service at **11am** and invited to share fellowship afterwards with a cup of coffee/tea.

- 6th April** - Mrs J Brumwell
- 13th April** - Rev John Bown (incl. Holy Communion)
- 18th April** - Meditation at foot of Cross
- 20th April** - Easter Day: Mr Ian Couchman
- 27th April** - Miss Barbara Lunn

RHODES MINNIS CHURCH

This small Chapel in beautiful countryside holds a weekly Sunday Service normally at 9.30am followed by coffee and biscuits. A warm welcome is extended to any visitors.

- 6th April** - Mrs. Joy Brumwell
- 13th April** - Rev. John Bown (includes Holy Communion)
- 20th April** - NO service at Rhodes Minnis; a joint Easter Day service at Elham Methodist Church at 9.30am
- 27th April** - Miss Barbara Lunn

POSTLING CHURCH SERVICES

- 6th April** 3.30pm Evensong
- 13th April** 6.30pm *Palm Sunday*. Taizé Service
- 18th April** 12 noon *Good Friday*. An Hour in front of the Cross
- 20th April** 9.30am *Easter Day*. Holy Communion
- 27th April** 9.30am Family Communion

L.E.T. (Lyminge Ecumenical Team) Lent Lunches at the Tayne Centre continue until 11th April

You are invited to an evening **AGAPE meal** to be held in the Parish Church
Wednesday 16th April.

If you would like to come please add your name to the list in the church.

Lyminge Newsletter

Terms & Conditions. Copy deadline is 18th April

Please email your copy in word.doc format to the editor (pb@pbarnes20.plus.com). Your payment must be received before your article or advert can appear in the Newsletter. Please leave your payment in a sealed envelope at the Lyminge Post Office or at the Lyminge Library. **Your name, organisation and telephone number must be included on the envelope and with your advertisement or copy.**

Business adverts cost £9.50 per month or £95.00 per year. Personal and charity adverts and articles from £1.50 per month, or £15.00 per year depending on size. The annual rate offers 12 entries for the price of 10. Please make cheques payable to ‘**The Lyminge Association**’
If you do not have email, a typed paper-copy can be left with the payment. Further details from Peter (editor) on 01303863737.

The Rude Mechanical Theatre Company 2014 Summer Tour

What do women really want? Well there's a question! Is there one man who has not asked it? Well, The Rude Mechanical Theatre Co will be coming to **Lyminge on Sunday 6th July** with a play that asks that very question. It's called '**The Wife**' and it is based on Chaucer's 'Wife of Bath'.

Alyson, a wife from Bath, of course, is travelling to Canterbury on a pilgrimage and describes with hilarious outcomes the five men who have shared her marriage bed. Then she tells the story of a young knight called Roland who, having ravished a young maiden and to avoid being put to death for his crime, is forced to undergo a test and search the world for an answer to the question: What is it that women most desire? With his stupid but rather innocent servant Dogrose, he encounters a series of marriage relationships and asks each of the women the question. It seems none of them agrees – until finally he encounters an old crone and she tells him the true answer, but only on condition he will do anything she asks of him. The play comes dramatically to a conclusion as the answers are revealed. Hilarious, but also deeply poetic, the play digs deeply into the nature of love and human relationships. When the play was first performed by The Rudes in 2003 it was included by The Times in their top three outdoor plays of that year and in the top hundred outdoor events of any kind. Not to be missed!

The play will take place on Tayne Field and starts at 7.30pm. Bring warm clothing, chairs and a picnic. Tickets cost £13 with a range of concessions and an excellent group rate ticket of £110 for ten people and are available from the company's website – www.therudemechanicaltheatre.co.uk, or by ringing 01323 501260. Nearer the time, tickets can be bought locally from Laing Bennett, the estate agents at 8 Station Road, Lyminge (01303 863393).



Lyminge Dramatic Society

Remember the Cold War and the nuclear threat in the early 1960s? Relive those times in our gripping thriller '**Pack of Lies**' by Hugh Whitmore. The play is on from Wednesday **9th April** to Saturday **12th April** at Lyminge Village Hall and starts at 7.45pm.

Tickets are available from nodaboxoffice.co.uk or from Laing Bennett, Lyminge (01303 863393) at £7.50 each (£5.00 senior citizen concessions available for the Wednesday and Thursday nights).

Support our society and have a very memorable evening out!

Our very successful Youth Theatre continues to meet on Mondays at the Tayne Centre from 5.45pm. For more details contact Catherine on 862602.

Rhodes Minnis Evening Circle

Our speaker in February was Martin Newcombe who gave us an illustrated talk on Switzerland. We saw lovely pictures along the Rhine and Aare from Basle to the Meiringen Falls, including Luzerne, Berne and Interlaken, finishing up on the mountain glaciers. The winner of the competition was Connie, with Ann Laker 2nd, Pearl 3rd and Daphne 4th. On the 16th April we look forward to Rosemary Piddock's talk on Monet's Garden. We meet at Rhodes Minnis Village Hall at 7.30pm and visitors are very welcome. For further information contact Diana Bennett on 862134



Lyminge Friends

In March we had John Long recounting his personal experiences of the Normandy Invasion followed by lunch in The Walnut Tree, Aldington. This was our first visit but we will be back as everyone enjoyed their meal very much.

April is going to be busy - in our meeting on **Wed 2nd** we look forward to welcoming Jon Wilson to talk to us about the **Folkestone Churches Winter Shelter**. We will also arrange our **Easter Monday Lunch** for **21st** and the group trip to **Chartham Garden Centre** on **30th** *Make sure Marian knows you are coming*

Meeting are 10.30am - 12.30pm in the Rigden Room of the Tayne Centre. We don't have membership fees, only the monthly entry fee, currently £2.00, which includes refreshments.

We are a friendly social group and always welcome new members. If you'd like to talk to one of us first, please call 863500 or 862044

News from the Jubilee Centre.....

The Centre and the **Charity Shop** will be **Open** for the **Garage Safari** on **April 26th** this is the perfect opportunity for you to call in and see what we offer!

Once again, we want to say **Thank you** to **Kamal** our new **Postmaster**, for sponsoring Lunches for the week leading up to Mother's Day; it was very kind of him and we and our Clients really appreciated it.

Our new **Head Chef, Darren**, and his team who normally work in Hythe, are revamping our meals and as part of the revamp, our Cook, **Debbie** will be working in Hythe every day except Friday while Darren or one of his team is working in Lyminge. Why not come and see the changes? We are sure you will approve!

Lunches are available in the Dining Room or the Conservatory Cafe for £4.35, lunch consists of a fruit juice, main course and dessert and is followed by tea or coffee. The Menu changes daily and there is always an alternative available for specific dietary needs. Also in the Conservatory Café you will find cakes and snacks available - why not enjoy one with a cup of tea or coffee?

The Centre will be **Closed** on **Good Friday** and **Easter Monday** but our famous, fabulous, freshly home cooked meals will still be available for home delivery - just call the Centre to book.

We are currently selling tickets for our **Easter Raffle** that has over 50 prizes. Tickets are £1.00 a strip and all the money raised will go directly to benefit our Clients. We have regular small raffles and large raffles at special events and times of the year - if you have something you could donate for a prize - large or small - we would be very pleased to receive it.

The **Charity Shop** is **Open** every **Saturday - 9.30am to 12.30pm** and the **Clothes Sale** is on the **first Monday** each month. We are no longer able to accept donations of electrical items. Thank you for not leaving your donations outside when we are closed.

Diary Dates:

Chairobics are on **Tuesdays** at 11.15am

Seated Exercise sessions are on **Fridays** at 11am

Singing for Health sessions are on the last Wednesday at 11am - the next one is on **30th April**.

The **Communion Service** will be at 11am on the **first Thursday**. Support and assistance with transport is available.

Our **Fun Bingo nights** are in the **Hythe Centre** on **Stade Street - 7.30pm** on the **first Thursday**.

For more information about any of our activities or services please call **01303 269602** and ask for **Matthew** or **Sue** or why not just pop in and see us?

Hawking Display
Applause (awaiting
confirmation)
BBQ, Licensed Bar

LYMINGE VILLAGE HALL
Proudly Presents

Further details
contact
Honor- 862928 or
Niki- 812651

Lyminge Day 2014

Saturday 10th May
Jubilee Field from 12 noon

The Children's Society collection

We are a children's charity who help children of all faiths or none, including children at risk on the streets, disabled children, young refugees, young carers or those within the youth justice system. Through our lobbying and research, we seek to influence CHILD PROTECTION policy and perceptions at all levels so young people have a better chance in life.

A sincerest thanks to all our Box Holders for collecting £495.90 this year in 2014. We are also very grateful to the family of Mr Robert McDonald who sent The Children's Society £620.00 in his memory.
Roger and Juliet Filby

NEXT MUSIC ON A FRIDAY on the 16th May at 8pm St Mary's and Ethelburga Church Lyminge

You will see the return of WILL.I.AM (piano) WRIGHT and the STOMPERS plus a ukulele revival with the UKELEAR POWER BAND

Come and enjoy, good music, good company with old and new friends.
FREE ENTRANCE, FREE WINE AND CHEESE AND BISCUITS.

Lyminge Bridge Club



In the 1980's a Bridge club in Etchinghill and one in Elham merged to form the Lyminge Bridge Club.

The Bridge players in the club come from varied backgrounds with a wide spread of ages. Some members are new to Bridge and some have great skill and experience from many years of playing but we all have fun and enjoy our Bridge together.

Bridge is not as difficult to learn as some people think and the members of Lyminge Bridge Club are more than happy to give free lessons to complete beginners. You do not need to bring a partner as current members will partner you and help you along.

Once you have learned the basics it is an intriguing and absorbing game that stimulates the brain. It is also a great way to make new friends.

We meet everyone Monday morning from 10.00-12.00 at Lyminge Bowls Club for a game of Bridge, a cup of coffee and a chat. This is a very social, non-league Bridge Club, which is not affiliated to the National or Kent County clubs.

We play Rubber and Chicago Bridge (but not Duplicate) in a pleasant, informal atmosphere.

Members pay £1 a week, which includes tea, coffee and biscuits, and there is an annual affiliation fee of £6 to the Bowls Club.

Just turn up on any Monday or for further information contact Janet Fry on 863177 or janet@rhodesminnis.org.uk

Who's Who in Lyminge, Etchinghill, Rhodes Minnis and Postling (see above).....

..... is open/available to any charity or 'not-for-profit' organisations to help the community and organisations to link together and maximise their benefits. This article has been running now for over 2 years and we are coming close to the end of our current list, but there maybe other organisations who are yet to promote themselves and 'fly their flag'.

There is no cost and I am able to help you put together an article with one or two photos if you need any help. So if you are just such an organisation or body that would like to appear in a future issue, then please contact me, the Editor, on 01303863737 or by email to pb@pbarnes20.plus.com

Rhodes Minnis

Quiz Night

Saturday 10th May 2014

7.30pm start at Rhodes Minnis Village Hall

Bring Your Own Supper and Drinks

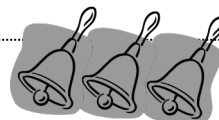
£6.00 a head

○ Teams of up to 6 people

All Welcome

To book a table please
contact
janet@rhodesminnis.org.uk
or phone 01303 863177

Lyminge Handbell Ringers



Lyminge has its very Hand Bell group who enjoy playing a wide range of music throughout the year. Although we play for fun we also love to perform at local celebrations, fetes and family parties. You can come and hear us play before booking if you wish to select your own choice of music. We have an increasingly wide selection of music to choose from. All we need at the venue is a large table for our bells and music, room for up to 11 players and a minimum donation of £40 for our charity, the Nepali Children's Trust. A small contribution to travelling costs is also much appreciated for bookings more than 5 miles from Lyminge. Weekends and evenings only please and plenty of advance notice is helpful. Want more info or make a booking?

Simply call **Ro Edmond on 863201** or email **welldorm@aol.com**

Lyminge Weather Statistics – February 2014

With thanks to Mr D. Godden for these weather statistics and notes.

	Temperature (°C)	Air Pressure (hPa)	Wind Speed (mph)	Total Monthly Rainfall
Maximum	11.6 (22 & 25/02/14)	999 (19-24/02/14)	52.0 SE (12/02/14)	223.0 (8.93 in)
Minimum	1.0 (10/02/14)	968 (08-10/02/14)	Highest Daily Rainfall	34.00 mm (1.34in) (06/02/14)

February 2014 was much warmer than average. Remained frost-free. Rainfall about three times the average, heaviest since 2010. This due to the Gulf Stream and associated winds keeping us warmer than usual.

Etchinghill W.I.

Barbara Syrett welcomed members to the March meeting. It was agreed unanimously to plant an apple tree in memory of Daphne Melrose who is sadly missed by us all. Birthday posies were presented to Daphne Andrews, Jacqui Storey and Stella Samuels. June Manton read points of interest from the East Kent News.

Our speaker, Helen Kendall-Tobias spoke about "Make-up for the forever forty woman" giving us advice on how to improve our appearance and feel better in ourselves. A member volunteered to be her model and she demonstrated using various products and how to achieve the right effect which was of great interest to everyone.

The winner of the flower competition was Jacqui Storey and Rosemary Piddock won the competition to make a make-up bag. Tea hostesses, Gill LeCras, Joyce Knapton and Anne Lloyd then served a delicious tea.

The next meeting will be held on Tuesday, 15th April at 2.30pm in the village hall when our speaker Ann Hall will talk about the magic of the Middle East. Please contact Barbara Syrett on 01303 265229 or Rita Warner on 863503 for more information about our W.I. meetings.

Etchinghill Update April 2014

Etchinghill Farmers' Market

The winner of the March market raffle prize was John White. The next Farmers' Market will be held on Saturday 5th April in Etchinghill Village Hall from 10-12.30.

Open House

Open House is held every Monday morning in the Village hall from 10-12. Everyone is welcome to come along for coffee and a chat

Open House Diary

Monday 7th April 10am I Eileen Jennings' talk is entitled 'Climbing Mount Kilimanjaro'

Monday 21st April 10am. Easter Breakfast: Items such as eggs, bacon, rolls etc. to be donated.

Breakfast will cost £5.00 to raise money for 'Mercy Ships', which we heard about from our speaker on 12th February.

Monday 28th April Italian Pasta Lunch another of Edna's specials! 12 noon.

ERA Cinema Club 21st April The Cinema Club film will be 'Beyond the Candelabra' a film about the last ten years of Liberace's life. 7.15 for a 7.30pm start.

Etchinghill Village Hall

Volunteers needed on Friday 4th April to help with annual Health and Safety checks and spring clean. Can you spare an hour or two between 9.00 and 4.00pm? Join in the fun: make a day of it: share lunch with us. Contact Rodney on 862028 for details.

Park House Sanctuary Boarding Kennels & Cattery

Park House, Stelling Minnis CT4 6AN

Brick-Built Heated Kennels Daily Walks
Reasonable Rates

All dogs must be fully inoculated
Heated Cat Chalets Quiet Area
Inspection Invited. To book or for further
information, call us on
01303 862622
or email lord.whisky@btinternet.com



Hythe Aqua Swimming Club is
expanding its nationally accredited
learn-to-swim programme and now
has vacancies in its lessons that are
held on Tuesday & Thursday evenings
at Hythe Pool.

To book your place

Tel: 01303 862353 or checkout our
website: www.hytheaqua.org.uk

Come and celebrate

St. Ethelburga Day

Saturday 5th April

A chance to visit your 7th century church
St. Mary & St. Ethelburga, Lyminge

Open 9.00 to 11.00

for morning coffee & guided tours

**ETCHINGHILL RESIDENTS'
ASSOCIATION**

Etchinghill Cinema Club

FILM SHOW

"BEHIND THE CANDELABRA" ¹⁵

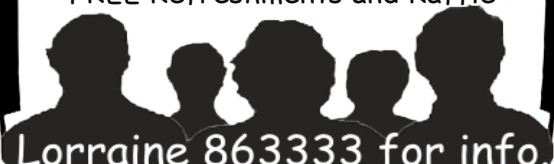
Monday, 21st April

Etchinghill Village Hall at 7.30pm

Entrance Fee £5 per head

includes Membership

FREE Refreshments and Raffle



Lorraine 863333 for info.

Lyminge Village Hall 100 CLUB RESULTS

The monthly winner of the
Village Hall 100 Club
was drawn at the Coach & Horses
in February 2014

The winner was

Gordon Boucher ticket number 41
If you would like to join our the club then
please contact
Niki - 812651 or Sue - 862696

Village Hall Management Committee Reg Charity 281845

Coach & Horses



Sunday Carvery - £8.95

Friday Food Theme Nights 6-9pm

4th April - Mexican

11th April - Italian

18th April - Indian

25th April - Polish

20th April - Easter Sunday Carvery
Served 12-4pm

30th April - Pub Quiz
7.30pm Start

Bookings and Contact: 01303 862694

Rhodes Minnis Village Hall

Beetle Drive

Friday 25th April
7.30pm

**Teas, coffee and juice provided. There
will also be a raffle**



Adults £2 - Children 50p



Everyone welcome to this family fun evening.

FREE RANGE EGGS

Bridge Farm, Lyminge

Small £1 per dozen

Medium £2 per dozen

Large £3 per dozen

Also Duck Eggs

Can deliver - 1 dozen minimum

Call 01303863625



Lyminge Bowls Club

A new season of bowls starts on 19 April 2014 – assuming the bowls green dries out! Not even the most long term members can recall seeing the ditches surrounding the bowling green flooded for so long. The green is built to drain well, so hopefully we will be able to play the few home fixtures in April. You would be welcome to come and watch any of the following:-

Saturday, 19 April, 2.00 pm	A club game – to remind us how to play!
Sunday, 20 April, 2.00 pm	A very social game involving club members
Saturday, 26 April, 2.00pm	Wear Bay visit for a friendly game
Sunday, 27 April, 2.00 pm	A friendly game against Cheriton Bowls Club

As usual, on Sunday mornings throughout May and into June we will be offering to coach new bowlers on the delights of the game. Come along and give it a try. (Another day could be arranged if necessary.) Call 863495 for further information.

Rhodes Minnis Village Hall Spring Flower Show

Saturday 12th April 2014

All entries will be accepted on the day
from 09.00 - 10.30

Schedules and entry forms are available from

- Daphne Andrews 862865
- Janet Fry 863177
- Online at www.rmvh.org.uk
- Lyminge Library

Show starts at 14.30 - Rhodes Minnis Village Hall
Refreshments, raffle, tombola

All Welcome

For more information please contact:

Janet Fry - show@rmvh.org.uk or phone 01303 863177

Reg. Charity 800345



April in the Garden Sponsored by Lyminge Gardeners' Society



Now the changing of the clocks has rewarded us with extra daylight the time is ideal to start your gardening for the season ahead. After such a mild winter beware of late frosts and keep vulnerable plants and new shoots protected at night if frost is forecast. Don't be tempted to put out tender bedding until much later on in the month and even then be prepared to cover it if necessary. We often have a cold snap in April and transient snow remains a possibility.

Deadhead daffodils and narcissi, give them a liquid feed or sprinkling of organic fertilizer and then let them die down. Don't cut off the leaves as they are necessary to replenish the bulb for next year. Keep deadheading spring bedding to keep it looking neat and encourage new flowers.

Many vegetable crops can be sown as seed this month. Broad beans, carrots, lettuces, spinach, salad leaves, leeks and chard are just a few ideas to get your healthy, cheap and home-grown food underway! If you have a frost-free greenhouse, get ahead with the summer crops - sweet peppers, tomatoes, aubergines and salads can be planted inside. Children will find the sowing of seeds and growing their own food fascinating whilst encouraging them to eat a healthier diet. Cheap, fun entertainment for your children or grandchildren!

Lyminge Gardeners' Society has a full programme of events for the coming season and new members are always welcome. Our Spring show is on Saturday 5th April at the Tayne Centre, please come along at 2pm to see the exhibits, you may be inspired to enter yourself next time! A warm welcome as well as refreshments and homemade cakes await you. On Tuesday 15th April we welcome back Nick Hamilton, son of the well-known television presenter Geoff, for the second part of his talk about his father's garden 'Barnsdale'. Tickets are available from the Age UK centre at £3 for members and £5 for visitors.

Whatever you plan to grow in the coming season good luck and enjoy.

Ross Care Ltd

A locally based support service offering warmth and kindness

Being a smaller business we can offer a more flexible service, one-off or regular calls as required.

Local group trips out enjoying the sunshine or just a one-to-one cup of tea at home – we try to cater for all your needs. Reasonable rates and CRB checked

Call **Ross Butcher** 07967342226 or 01303 862410 for more information

'Trying to Make Loneliness a Thing of the Past'

Etchinghill Village Market

**Saturday 5th April
From 10.00am**

INCLUDES

FRESH CUT FLOWERS : DELICIOUS FUDGE
FRESH VEGETABLES : LOCAL PORK JOINTS &
CHOPS : FRESHLY BAKED BREAD & ROLLS :
JAMS AND PRESERVES : HOME MADE PIES,
CAKES & SCONES : FREE RANGE EGGS
LOTS MORE.

Plenty of free parking and charity car wash. Spend £4
on any one stall and have a free coffee or tea on us.
For further details phone John 863819

For more information contact John White 01303 863819 Charity No 302736

In Aid of Lord Whisky Sanctuary Fund

Registered Charity: 283483

Park House, Stelling Minnis, Kent. CT4 6AN

Tel: 01303 862622 Fax: 01303 863007

Website: www.lordwhisky.co.uk ~ Email: lord.whisky@btinternet.com

Visit the Lord Whisky Tearooms and Gift Shop
Rhodes Minnis CT4 6XY

Book now for our Easter Sunday Lunch
Sunday 20th April

Open daily 10am - 4pm. Tel 01303 862349

Freshly prepared Breakfasts, Lunches, Teas and Snacks

Come and try our delicious Sunday Roasts

Home-made cakes ~ Good Quality Bric-a-Brac and Lord Whisky Gifts

Boot & Spring Fayre ~ Saturday 3rd May

at Park House, Stelling Minnis CT4 6AN

Boots from 8am ~ Cars £6.50/Vans £10

Entertainment from 12 noon - 3.30pm

Hythe Town Concert Band, Layla Belly Dancing plus other entertainment

Hot & Cold Refreshments ~ Raffles ~ Tombolas & more !

Admission by donation ~ plenty of free parking

Creative Places

Creative Places provides a wide range of art and
craft workshops in the local area, using local
experienced artists as tutors, for people wanting to
learn new skills and have a fun social experience.

**Our 2014 Spring/Summer programme taking
place at Barham Village Hall is now available!**

Take a look at our 30 exciting creative courses
and workshops taking place from February
through to July:

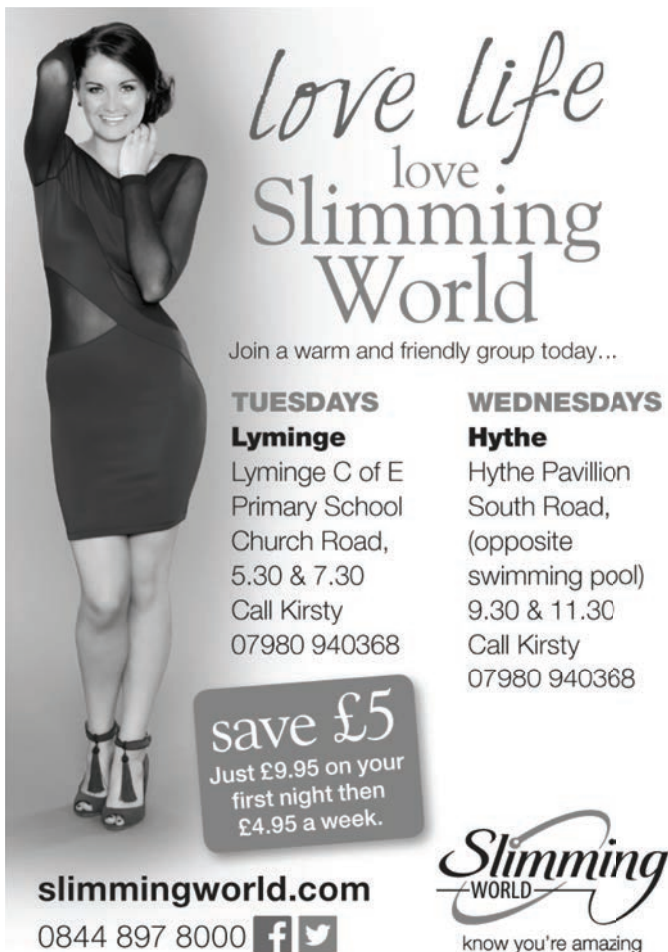
**Basket Making · Stained Glass · Still Life
Drawing · Needle Felting · Skirt Making
Lip Balm & Bath Bombs · Candle & Soap Making
Screen Printing · Upcycling · Dress making
Top Down Knitting · Curtain Making
Lampshade Making · Pottery · Paper Cutting
Lino Printing · Crochet · Yarn Spinning
Quilting · Traditional Framing · Silver Clay
Photography**

Details from:

www.creativeplaces.org.uk or contact

Tamasin@creativeplaces.org.uk / 07990 543397

Creative Places CIC





love life
love
**Slimming
World**

Join a warm and friendly group today...

TUESDAYS	WEDNESDAYS
Lyminge	Hythe
Lyminge C of E	Hythe Pavillion
Primary School	South Road,
Church Road,	(opposite
5.30 & 7.30	swimming pool)
Call Kirsty	9.30 & 11.30
07980 940368	Call Kirsty
	07980 940368

save £5
Just £9.95 on your
first night then
£4.95 a week.

slimmingworld.com
0844 897 8000  

*Slimming
WORLD*
know you're amazing

Lost and Found

Found - a pretty **crocheted iPhone pouch** on the
lane between Tan Barn and Sunningdale Farm. It has been
washed and scrubbed and has come up very nicely.
Crochet cannot be done by machine, so someone worked
hard on this item, and I would like to find the owner if
possible.

Susan Hoyle

srhmail@me.com or sprhoyle@phonecoop.coop

SATURDAY MARKET COMMENCES

19TH April

9am to 12noon

Tayne Centre, Church Rd, Lyminge

Various stalls Jam to Jewellery

Books to Bric-a-Brac

Cakes and Gifts

Teas Coffees

Bacon or Sausage in a roll

Come buy local

Have breakfast as well



Lyminge Pre-School



'OUTSTANDING' - in every category
Ofsted Feb 2011

We are now open between 8am and 6pm
ALL YEAR ROUND

We are a well established pre-school with committed, enthusiastic and highly qualified staff passionate about providing the highest standards of childcare.

To arrange to meet the team, please call:
01303 863149 (day) or 07709420736 (eve).

Alternatively, email lymingepreschool@gmail.com and visit our website www.lymingepreschool.org.uk

Rhodes Minnis Toddler Group



We are a small group open to mums, dads, grandparents and carers who meet on Thursday mornings at **Rhodes Minnis Village Hall** any time between **10 am – 12 noon** during term time. Come and have a tea/coffee while having a friendly chat as your child plays. £1.50 per session (first session free)

'Phone Elaine on 01303 863096 for more information

ETCHINGHILL BABY AND TODDLER GROUP

We are a friendly toddler group which caters for babies and children from 0 to school age. Tea/coffee and healthy snacks are provided.

In dry weather there is outside access for the children. Crafts and a music session are provided each week. We meet on Wednesdays between 10am and 12pm

If you have any queries please contact

Kathy Robinson 07930919340

Lyminge Baby and Toddler Group

Calling all parents, grandparents or carers with children under school age at a loose end on Tuesday mornings. We meet every week [during term time] at the *Methodist Hall* [now known as the *Tayne Centre*] in *Lyminge* between 10.00am -12 noon to give the children a chance to play and interact with others the same age. We offer a wide range of craft and play activities, including trikes, bikes and slides to painting books and jigsaws.

We charge £1.50 per session (1st session free) which includes 'half time' refreshments for adults and children.

For more information 'phone **Karen 01303 863274**

Shuttlesfield Barn – 4 Star Gold – Self Catering

Rural location. Two bedrooms, ensuite shower and wetroom. Disabled facilities. Short and longer stays.



Families, dogs, horses welcome. Located on walking, cycling, riding routes. Heated outdoor pool in summer.



Info@shuttlesfieldbarn.co.uk Tel:01303862729



Offering personalised care & support at home for

* Elderly * Physically Disabled * Learning Disabled
* Dementia * Complex Care * Mental Health
* Home from hospital and more...



Our trained staff are available **24 hours a day, 7 days a week**, offering assistance with personal care, domestic work, getting in and out of bed, bathing, day trips, social inclusion, assistance getting dressed and much more..

Registered with the CQC Care Quality Commission



Call today & see
how we can help

01303 250200

Direct payments & Kent card accepted
homecare@nurseplusuk.com www.nurseplusuk.com

Lyminge Village Hall

SPRING FEVER QUIZ

on

Saturday 26th April
at

7.00pm for 7.30pm start

*Bound down to the village hall for a fun
packed evening*

Tables of 6 - 8 persons

£8.00 per person

Two course hot supper

Licensed Bar

To book your table call:

Honor 862928 or Niki 812651

Organised by the Village Hall Management Committee
Reg Charity 281845

Lyminge Gardeners' Society



Saturday 5th April 2014

The Spring Show

The Tayne Centre, Lyminge

Show starts at 2pm, prize giving at 4pm

Classes include: flowers, veg, cooking, poetry, photography, and a child only class

Teas, Homemade Cakes, Raffle,

All Welcome

BARNSDALE – PART 2

A talk by Nick Hamilton

Tuesday 15th April 2014, 7.30pm, The Tayne Centre

Members £3, Non-members £5 (tickets in advance)

Tickets are available NOW from The Age UK

Lyminge centre, Numbers are limited so book early to avoid disappointment

I am a Sixth form student living in Lyminge

This summer I will be volunteering for Raleigh International on humanitarian projects in Borneo.

In order to raise funds, I have organised a

QUIZ NIGHT on 3rd April 2014 from 7pm

The OFFICE bar, Southcliffe Hotel on the Leas, Folkestone

Entrance £10 a head including food (vegetarian option available)

Quiz & raffle prizes donated by Eurotunnel, P&O, Coty, Lyminge Country Store, China China, Hythe Beauty etc.

Come on your own, or make a team.

For enquires and reservations contact me at joss.borneo@gmail.com

If you cannot be there, donations can be made to my just giving page www.justgiving.com/Josselin-Canevet



Vacancy - Village Care

We provide high quality home-based care to people living in The Elham Valley - personal care, nursing care, housework, shopping, social, meal prep & cooking etc.

We currently need to recruit a reliable & friendly carer living in the local area for occasional 1-2 hour morning or early evening calls in Lyminge village to cover sickness and/or annual leave. Best rates paid for the right person. Could you be that person?

Call Debbie 079 22 111 342 or email your CV to stewpot@outlook.com for more info

Update We also now have a fully qualified RGN available in the Lyminge/Elham /Minnis area. Any enquiries. please phone the above number.

Stanford - with Postling WI Jumble Sale

Saturday 26th April

Sellindge Village Hall

Doors open 2pm

Donated items can be left at the hall from 9am on the morning. NO ELECTRICAL ITEMS

For more information please phone Elaine on 863096

"Sometimes the most ordinary things could be made extraordinary, simply by doing them with the right people."

— Elizabeth Green

Letters to Editor

Shame

There is a silver-haired lady who drives a Chrysler Jeep, reg GK03. She was parked opposite the Lyminge PO in front of my red Audi on Saturday 28th February around 10.30am. When I returned to my car a passer-by explained that he had heard a bang and witnessed the incident. The driver of the Jeep had reversed into my car and just drove off. Perhaps the driver would get in touch with me and we can sort out the bill for the damage!!

Judy Pope (tel: 840271)

The Gambian Nursery School

I would like to thank all those of you who helped organise and assist at this hugely successful event and for those of you who came to support the Quiz evening in Lyminge Village Hall recently. The final total sum made was £1273.05, which was staggering amount. This money will go a long way to achieve our aim which is to build a four classroom nursery school in Brikama, West Africa.

Ingrid Goodchild



Ballroom, Latin & Salsa Dancing Etchinghill Village Hall Thursdays

New Classes commence 10 April 2014

New 16 & Under Beginners 6.00-6.30 £3.00

16 & Under Improvers 6.30-7.30 £6.00

New Adult Beginners Ballroom & Latin 7.30-8.30pm £6.00

Adult Improvers Ballroom & Latin 8.30-9.30 £6.00

For details, private lessons & parties phone Lynn on
01303 279504/07967979610

lynn.chapman0127@btinternet.com

IDTA (AB), (AL), (SalDip)

READY TEDDY GO !

Do you have any Teddy bears or soft toys
looking for a home.

Required for **Lyminge Day** Fun games.
Can Collect.



Please call Sue on 01303 862696 or leave at
27 Station Road, Lyminge. Thank you.

The Lord Whisky Sanctuary Fund

Registered Charity No: 283483

Come and visit

The Lord Whisky Tea Rooms

at Rhodes Minnis CT4 6XY (turn at Six Mile Garage on the B2068)

Open daily from 10am - 4pm for breakfasts, lunches, teas
and snacks

Fish & Chip Supper every Friday evening from 6pm to 9pm
(orders taken from our normal menu)

We will also open at times to suit you for Birthday Parties,
Wakes, Business Meetings, Club Meetings, Seminars, etc.

Contact us on 01303 862622/862349

or e-mail us at lord.whisky@btinternet.com

www.lordwhisky.co.uk

BERT LEWIS

It is with great sadness that we have to inform you
that our dear dad, Bert Lewis, died on Friday 14th
March 2014.

Bert had a fall at home at the end of January,
which resulted in him being admitted to William
Harvey Hospital. He then moved to a Nursing
Home in Sevenoaks, close to one of his daughters,
but sadly passed away soon after.

We as a family would like to take this opportunity
to thank everyone in the village, especially his
neighbours, for all the friendship, care and support
you have given to dad in the time he has lived in
Lyminge, especially in the latter years.

Bryan, Bonnie & Penny

ELHAM VALLEY & WYE LIONS CLUB



www.elhamwyelions.org.uk



Have you heard of the Lions' Message in a
Bottle Scheme? Basically you keep medical
information such as any medical conditions
and/or regular medicines, in a bottle in the
fridge, so that in the event of a medical
emergency at home, it is immediately
available to paramedics or similar. They are
alerted to the bottle by a sticker on your front
door. If you would like a bottle, give us a call
on 0845 6015212, or visit our web-site.

**You can win a large Easter Egg in our
raffle - coming to a pub near you soon!**

Lyminge Historical Society

Tuesday, 6th May 2014

7.30pm at

THE TAYNE CENTRE

An ILLUSTRATED TALK by

Daphne Joynes

on

Sheppey's Admiral – Sir William Parker

New members and visitors are welcome on the night.

Refreshments will be served.

Donations appreciated.

Lyminge Historical Society Mobile Tel. No.

07759 260816

Website: www.lymingehistoricalsociety.co.uk

.....
**We are still looking to copy WW1 Memorabilia;
please contact John Carr on 862972 if you can help.**

A BIG THANKYOU FROM PAUL & DEBBIE MARSH

To all our friends and neighbours for their love, best
wishes, support and prayers for Debbie after her
heart attack at home and subsequent collapse in
hospital. She is now home and doing well.
Thank you all

Paul & Debbie

TAYNE CENTRE Hall HIRE

Previously known as the
Lyminge Methodist Church Hall



Clayson Hall

1 October to 31 May (including heating) £9.00 per hour
£32.00 per 4 hour session :£64.00 full day
1 June to 30 September
£6.50 per hour :£23.00 per 4 hour session :£46.00 full day

Rigden Room (Parlour) with heating, if required*
£6.50 per hour all year (*electric - over heaters).

Burren Room with heating, if required*
£5.00 per hour all year, (*electric - over heaters)

Overnight Stays

1 June to 30 September £40; 1 October to 31 May £55

For any enquiries please call **07971 722 401**



for buses from Lyminge Post Office to
Folkestone Town Centre via Etchinghill & Cheriton High St.

MONDAYS TO SATURDAYS except Bank Holidays

There are route 17 buses at 0705 (not Saturdays), 0749, 0912, 0939 (not Saturdays), 1004, 1104, 1204, 1304, 1404, 1504, 1614 (1619 on schooldays), 1629 (schooldays only), 1654 (schooldays only), 1719, 1819, 1919, 2113 and 2313.

There are also route 18 buses to Sandling Stn & Hythe - for times see our website or call the number below.

SUNDAYS & BANK HOLIDAYS

There are route 17 buses at 0947, 1147, 1347, 1547, 1802 and 2002.

for buses from Lyminge (opposite Samuel Jacob) to
Canterbury City Centre via Elham, Barham & Bridge

MONDAYS TO SATURDAYS except Bank Holidays

There are route 17 buses at 0727 (schooldays only), 0732, 0752, 0904, 0944, 1044, 1144, 1244, 1344, 1444, 1559 (Saturdays and Mondays to Fridays during school holidays only), 1614 (schooldays only) 1704, 1804, 2001 and 2201.

There are also route 18 buses to Canterbury via Stelling Minnis and Bockingham - for times see our website or call the number below.

SUNDAYS & BANK HOLIDAYS

There are route 17 buses at 0827, 1027, 1227, 1427, 1642 and 1842.

These times will operate from 8th January 2012.



timetable information **0871 200 22 33**

Calls cost 10p per minute plus network extras

www.stagecoachbus.com/eastkent

Lyminge Village Hall

Lyminge Village Hall is one of 14 Hallmark L2 accredited village halls in Kent. Consequently, we offer a safe, secure and well managed village hall and this accommodation:

1. **Committee Room**, suitable for up to 12
2. **Harry Storey Room**, ideal for small club activities
3. **The main hall**, great for dances and large celebrations with bar, servery and full stage

We remain a competitive local venue ideally situated off the main road with ample parking. Examples of prices for the main hall are:

Friday or Saturday evening £65.00, weekday evenings £20.00 and all day Saturday £135.00. **For full price details and room availability call our booking secretary, Jacqui Storey, on 862044**

ETCHINGHILL VILLAGE HALL HIRE FEES

The next time you are thinking of holding a function you should try Etchinghill Village Hall, which holds the highest Hallmark accreditation level, with its excellent facilities, including ample parking space.

The standard hire charge for the main hall and kitchen are:

Weekdays £10.00 per hour

Saturdays £12.00 per hour

Sundays £12.00 per hour

During the winter months (1 November to 31 March) a Winter Supplement of £1.00 per hour is added to the above rates.

Special rates apply for weddings and all day events with a range of discounts on the above rates applying to all lettings of more than three continuous hours and additional discounts are available to Etchinghill Residents and Regular Hirers.

The use of a separate Committee Room is also available.

For all bookings or enquiries please contact:

Sylvia Williams on 01303 863547

RHODES MINNIS VILLAGE HALL

Are you looking for a hall in which to hold Practice sessions, private party/function or Meeting? Rhodes Minnis Village Hall has the capacity to take parties of up to 100 and has kitchen facilities at no extra cost.

Rates:

Sun – Fri £14.00 per session. £34.00 per day

Sat - £20.00 per session. £27.00 evening session
£55.00 per full day.

Session Times:

AM session 8.30am – 12.30pm

PM session 1.30pm – 5.30pm

Evening Session 6.00pm – 11.45pm

A returnable deposit is payable in advance.

Regular users will be given a special reduced rate.

For details contact 07849 217793

or by email: book@rmvh.org.uk

Sibton Park Cricket Pavilion Club

Having a party? Need a local venue?
Why not take advantage of Sibton Park Cricket Club's lovely pavilion?

We have a bar with club price drinks & friendly efficient staff.

There is capacity for up to 100 guests. For further information or to make a booking please

Contact Lesley Kirk, Tel: 01303 862366

EVENT PLANNER

This page is printed to give readers and organisers the opportunity of planning events without clashing with existing ones which are already in the 'diary'. It is not intended as a means of advertising and we take no responsibility for errors or omissions. Acceptance is at the discretion of the editor. Please send your updates by email to pb@pbarnes20.plus.com or via methods outlined on Page 2. Location and name codes follow:

C&H: Coach & Horses; **ECC:** Etchinghill Cricket Club; **EVH:** Etchinghill Village Hall; **ERA:** Etchinghill Residents' Association; **ES:** Elham Square; **JC:** Jubilee Centre; **JF:** Jubilee Field; **LB:** Laing Bennett; **LL:** Library; **LMC:** Lyminge Methodist Church; **LPC:** Lyminge Parish Church; **LSH:** Lyminge School Hall; **LVH:** Lyminge Village Hall; **LW:** Lord Whisky; **NP:** Nailbourne Parlour; **NVH:** Newton Village Hall; **PC:** Postling Church; **PH:** Lord Whisky, Park Hse. **PVH:** Postling Village Hall; **RVH:** Rhodes Minnis Village Hall; **RMC:** Rhodes Minnis Church; **SNL:** See News Letter for info; **TC:** Tayne Centre.

ONE OFF or IRREGULAR EVENTS					ONE OFF or IRREGULAR EVENTS				
Date	Time	Event	Where	Tel. No.	Date	Time	Event	Where	Tel. No.
5 April	9-11am	St.Ethelburga Day Coffee Morning	LPC	862073	18 July	9.30am	Summer Fair	JC	269602
5 April	2pm	Lyminge Spring Flower Show	TC	862264	2 August		RM Summer Flower Show	RVH	
12 April		RM Spring Flower Show	RVH		9 August	2pm	L'ge Summer FlowerShow	TC	862264
26 April		Garage Safari	TC		19 August	9am	Summer Outing, RHS Hyde Hall	TC	862264
26 April	7.00pm	Spring Quiz	LVH	862928	25 August		Pétanque/BBQ/Picnic	EVH	
10 May		Lyminge Day	LVH	862928	13 September		Ladies Pamper Evening	LVH	862928
10 May		Youth Bake Off	EVH	07521 372477	14 September		Garage Safari	LVH	
20 May	7.30pm	Lyminge Village Hall AGM	LVH		4 October		Quiz	EVH	
1 June		The Big Lunch	EVH		5 October		Combined Harvest Festival	LPC	
14 June		World War I 'Exhibition'	LVH		11 October	7.30pm	Autumn Quiz	LVH	
21 June		Midsummer-Evening Concert	L&PC		14 October	7.30pm	Lyminge Gardeners' AGM	TC	862264
28 June	7.30pm	Summer Quiz	LVH		21 November	9.30am	Christmas Fair	JC	269602
12 July	7pm	Cantores Choir Prom	LVH	863992	6 December		St Nicholas Fayre	LVH	
13 July		The Rudes Mechanical Co.	TF						

WEEKLY EVENTS					WEEKLY EVENTS				
Day	Time	Event	Where	Tel. No.	Day	Time	Event	Where	Tel. No.
Mon	10:00am	Open House	EVH	863394	Wed	6pm	Karate for Juniors	EVH	07554004526
Mon	10.30am	Lyminge Larks (Singing)	TC	01233 750223	Wed	7:00pm	French Conversation Grp.	KH	862972
Mon	11am	Cookery	JC	01303 269602	Wed	7:30pm	Cantores Domincae Choir	LSH	01233 840961
Mon	2:30pm	Monday Fellowship	TC	862164	Wed	7:30pm	Circuit Training	TC	07951 698 008
Mon	5.45pm	Lyminge Youth Theatre	TC	862602	Wed	8:00pm	Scottish Country Dancing	EVH	862761
Mon	6.30pm	Judo Club	LVH	862946	Thu	10:00am	RM Toddler Group	RVH	863096
Mon	7:30pm	Circuit Training	TC	07951 698 008	Thu	10:00am	Art Group – Morning	TC	211364
Tue ¹	10.00am	Baby and Toddler Group	TC	863274	Thu	11am	Shopping Trips to Local Supermarkets	JC	01303 269602
Tue	10.30am	Art Class	JC	01303 269602	Thu	2:00pm	Art Group – Afternoon	TC	862972
Tue	11.15am	Chairobics	JC	01303 269602	Thu	6.00pm	Ballroom & Salsa Dancing	EVH	07967979610
Tue	6pm	Football Training	JF	07967342226	Thu	6.45pm	Short Mat Bowls	LVH	862293
Tue	6.45pm	Short Mat Bowls	LVH	862293	Fri	9:10am	Circuit Training	TC	07951 698 008
Wed	10:15am	Mature Movers (Exercise)	TC	862873	Fri	11am	Seated Exercise	JC	01303 269602

MONTHLY EVENTS					MONTHLY EVENTS				
When	Time	Event	Where	Tel. No.	Day	Time	Event	Where	Tel. No.
1st & 3rd Mon	10:15am	Health Walk	LVH	862959	3 rd Wed	7:30pm	RM Evening Circle	RVH	862913
2nd & 4th Mon	10:15am	Health Walk	LVH	862959	Last Wed	7:30pm	Quiz Night	C&H	862694
3 rd Mon	7.30pm	Etchinghill Cinema	EVH	863333	4 th Fri	7:30pm	Beetle Drive	RVH	862616
Last Mon		Parish Council Meeting	SNL		Last Fri ⁴	11am	Singing for Health	JC	862364
1 st Tues	11am	Reminiscence	JC	01303 269602	Last Fri	1.30pm	Team Quiz	JC	269602
1 st Tues ²	7:30pm	LHS Talk/Event	TC	862972	1 st Sat	10:00am	Village Market	EVH	863819
3 rd Tues	2:30pm	Etchinghill W.I.	EVH	863503	2 nd Sat	10:00am	Postling Ch. Coffee Morn.	PC	863536
3 rd Tues ³	7.30pm	Gardening Society	TC	862264	3 rd Sat	8:00am	Saturday Market	TC	862164
1st Wed	10:30am	Lyminge Friends	LMP	862598	Last Sat	11:00am	Lyminge Poetry Group	LL	863474
2 nd Wed	10:30am	Mothers' Union	NP	862221	3 rd Sun	10.00am	Parish Walk	Richard	862015

¹ In term time only ² Except Jan, Feb, July and August ³ Except Jan, Feb, Aug ⁴ Except Aug and Dec

Out and About

Do you have any photos of local events or local groups in action, please call 01303 862699. Give your group a FREE plug !



◀ 9 Lyminge Guides & 3 Lyminge Rainbows are the first in Kent East County & second in the UK to complete the 'Make A Noise Challenge Badge'. Girlguiding Kent East Choir member Sarah Bristow presented their badges at a meeting last month. Guide Leader, Ann Baker, said 'The girls have been enthusiastic about all the challenges & enjoyed exploring different ways of making & enjoying music from around the world.'
Well done, all of you !



▲ One of the teams at the **Good Child Nursery Quiz Night** enjoying the event on 8th March. The whole event raised an amazing £1,263.05. See also Letters to the Editor on page 11. The winner of the quiz was Lynn Scarfezabo's team and Ingrid Goodchild's team came in at the end !



▲ **Lyminge Friends** outside the Walnut Tree in Aldington on 5th March. The group met up there after their meeting and enjoyed lunch inside !

Mystery Photo



Rehearsing for **Lyminge Dramatic Society's** production of **Pack of Lies** which takes to the stage from 9th to 12th April. ▲

Don't forget your tickets - available from the Box Office at Laing Bennett - it's a brilliant play !



Last month's picture was the compass rose part of the design on the top of the Queen's Diamond Jubilee Monument on Tayne Field.

Try this one. There is a clue in the background as well !

DILTON

MINI SKIP HIRE

Ballast, Hardcore, Sand and Topsoil Supplied

REGISTERED WASTE CARRIER

Telephone: 812448 or

Mobile 07799 433754

M. J. Athow

BUILDER & DECORATOR, EST. 1965

GENERAL MAINTENANCE

Qualified and Insured. Free estimates

Telephone: 862616 Mobile: 07976 306665

Email: m.j.athow@live.co.uk

Website: <http://mjathow.spaces.live.com>

AIR LINK CARS

(You pack up, we pick up)

Airport, Seaport & Long Distance Travel Specialists.

The Family Run Business where service really counts

Estate cars and People Carriers

Fixed price 24hrs a day. No extras.

Written Confirmation of booking.

For the Easy Airport Link, Think Air link!

01303 862704 - 07753 760897



WILL WOODBRIDGE

Carpenter/small works builder

With years of experience

Telephone 01303 863062



Laing Bennett
INDEPENDENT ESTATE & LETTING AGENTS

PHILIP A CHAPMAN

With our excellent local knowledge, service and two local offices we will get you moving

The Estate Office 8 Station Road Lyminge Kent CT18 8HP
T 01303 863393 E lyminge@laingbennett.co.uk

134 High Street Hythe Kent CT21 5LB
T 01303 264846 E hythe@laingbennett.co.uk

www.laingbennett.co.uk

Picture Framing

All types of framing undertaken, including tapestries, cross stitch, medals & badges etc.

Can collect and deliver.

Phone Lyminge (01303) 863449

Claire's Country Kitchen



Join us and enjoy some of our delicious home-baked items, Breakfasts, Light lunches, and Snacks with a selection of Teas or Coffees.

Open Monday – Saturday, 7.30am to 4.00pm

Canterbury Road, Lyminge, Kent CT18 8HU

01303 864222

SCRUBBERS - Est. 1988

THE HOME AND COMMERCIAL CLEANERS

One off, regular or moving day 'Blitz'

Oven cleaning – Ironing

Carpet cleaning and more...

For a friendly and reliable service

Free Estimates Tel: 01303487019 or 07834128671

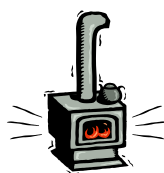
Dennis Huntley

Installer of wood and multi-fuel stoves & fireplaces
Heating engineer, solid fuel servicing and

chimney sweep

01303 862343

07850 784365



R. B. BUILDING SERVICES

General Maintenance, Painting, Carpentry,
Plumbing, Upvc Fascias and Guttering.

Fully Insured

For a free quote please ring Roy Bowling on

Home Tel: 01303 863267 – Mobile 07947 132319

Sharon Underwood B.Sc HPC Registered Dietitian

The Clinic, Lyminge Tel: 01303 863359

email: info@theclinic-lyminge.co.uk

With more than 25 years experience in the NHS

I offer advice and plans for the following conditions:

- Weight Management and Body Composition • Diabetes
- Irritable Bowel Syndrome • Cholesterol Reduction
- Healthy Eating & Optimum Nutrition • Coeliac Disease

All consultations are confidential and private.



HOLDEN PLASTERING

All aspects of Plastering
Smooth-over Artex - a speciality.
Coving, Tiling and Plumbing

Phone JAMES for free estimate or advice on:

Tel: 01303 770449

Mobile: 07773 262970

D.M.B. Plastering

All aspects undertaken

Interior. Exterior. Plastering. Rendering.

Coving. Ceilings Wall. Floors

Finest quality assured. CSCS Certified.

26 years experience.

Free estimates. Reliable service. Fully insured.

Call David on 07818 607209. Stelling Minnis

P Davis + Co

General Builders and Roofing Specialist

All work undertaken

Call for free estimate

Tel: 01303 863049 or 0784 6769643

Personal Computing

For straightforward I.T. advice, solutions and training

Contact:

Steve Ashman

862869

sra@ashman-consulting.co.uk



Small Animal Feed Suppliers •
Wild & Domestic Bird Seed & Feeders •
Equine Food & Supplements •
Light Bulbs & Batteries •
Poultry & Farming •
Calor Gas, Logs & Coal •
Pest Control •
Plus more...



Free Range Meat •
Free Range Eggs •
Dairy Produce •
Fruit & Veg •
Breads •
Pastries •
Tacklements •
Beer, Cider & Wine

For more information contact us:
01303 720034
www.lymingecountrystore.co.uk
info@lymingecountrystore.co.uk

Wilco Plumbing & Heating

Central Heating Installations & Repairs

Gas & Oil Boiler repairs & replacements

5 Year Guarantee on Worcester Bosch Boilers.

Local Experienced Engineer, Emergency plumbing 24/7 call out

Registered with the Institute of Plumbing

Gas Safe Registered-OFTEC Registered

KCC Trading Standards Approved

01303 862173 07860 452640

paul@wilcoplumbing.co.uk

www.wilcoplumbing.co.uk

TOBY'S TREE SURGERY

Thinning – Reducing – Maintenance – Felling

ALL TREE WORK, BOTH PRIVATE AND COMMERCIAL,
UNDERTAKEN BY OUR NPTC TRAINED OPERATIVES

Professional Friendly Service

FREE ESTIMATES - FULLY INSURED

Contact Toby Griggs: 07854 098 395

or (01303) 863642



D. SCRIVENS

PLUMBING & HEATING

Oil Fired Boiler Installation,

Commissioning, Service and Maintenance.

Unvented Hot Water Systems – Solar Water Heating

Central Heating – Water Softeners – Bathrooms – Showers – En suites

Approved 'Aqualisa' Installer

WATER INDUSTRY 'APPROVED PLUMBER'

FULLY INSURED

Mobile: 07810 897076

Email: scrivensplumbing@aol.com



K & M LEWSEY LTD

PLUMBING & HEATING ENGINEERS

ESTABLISHED 1969

REGISTERED PLUMBER

GAS ACOP APPROVED ENGINEERS

TELEPHONE: 01303 264535

MANNED OFFICE,
DAYTIME MONDAY TO FRIDAY

Total garden care for all your needs

TIM MILLETT

Grass Maintenance, General Gardening, Small & Medium

Size Tree Work, Stump Grinding and Wood chipping

Fencing Repairs & New Installations

Turfing, Hard & Soft Landscaping

Free Estimates - Fully Insured

01303 863676

Mob: 07752 880583

Email: info@tmhorticulture.co.uk

North Downs

Tree Surgery

your local tree surgery specialist

All aspects of tree work undertaken

including the removal of dangerous trees

Felling : Thinning : Reshaping : Crown Reductions : Pollarding : Pruning

Hedge Cutting : Landscaping Service : Logs available

NPTC QUALIFIED – FULLY INSURED

Free advice and quotes

Call Will on: 01227 709 304 or Mobile: 079300 10622



N.P.C.

Domestic Appliance Services

Service and repair of washing machines, tumble driers,
dishwashers, cleaners and small electrical work. For a
prompt and friendly service

Call Neil Collard 01303 892234 or 07798716044

or www.npcdomesticapplianceservices.co.uk

Auto Economy Centre

Fully equipped Mechanical Repair & Service Centre

with the latest diagnostic equipment.

MOTs £39.95

01303 863656

Orchard Garage, Canterbury Rd, Etchinghill

www.autoeconomycentre.com

Ralph Allard Chimney Sweep

Brush and Vacuum. All chimneys, boilers and stoves swept. Certificates issued.

HETAS and NACS registered, fully insured.

Member of National Association of Chimney Sweeps

Tel: 01303 844465 or 07813716654



REGISTERED OSTEOPATHS & MEDICAL ACUPUNCTURIST

Adam Price B.Sc Hons (Ost) Katie Price B.Sc Hons (Ost)

The Clinic 01303 863359 or mob: 07980 897382

- Treatment of lower back pain, both acute and chronic
 - Treatment of tension/cervical type headaches both acute & chronic
 - Treatment of various stiff & painful arthritic conditions
 - Treatment of sports injuries, both soft tissue & skeletal
 - Deep tissue back, neck & shoulder massage for symptomatic relief
- The cost of your treatment may be recoverable from your insurers. Please check

THE CLINIC

Garden Suite
Pendragon House
4 Station Road
Lyminge
Kent CT18 8HP
01303 863359

info@theclinic-lyminge.co.uk
www.theclinic-lyminge.co.uk

THE CLINIC
Lyminge
podiatry & osteopathy

Formerly Wholisticworks Clinic



Sunhouse Electrical

Your local reliable Electrician
Part P Registered & ELECSA Approved
On Electrical Safety Register & Fully Insured
For a free quotation call James on
01303 766333

www.sunhouse-electrical.com

GOSBEE CONSTRUCTION

Over 30 years experience. Jacksons Expert Installer
Reliable. Friendly. Professional

Property Maintenance
Hedge & Tree Cutting
Tarmacadam Works
Grass Cutting

Building Work
Garden Design
Landscaping
Fencing & Gates

Ponds
Patios
Driveways

Call us for a free, no obligation quote: 07974 835511 or 01303 863337
Visit our website: gosbeeconstruction.co.uk
E-mail us: info@gosbeeconstruction.co.uk

S R Accounting and Business Solutions LLP

"Working hand in hand with your business"

Denise Roberts, ACIS, ACMA & David Sayle

Qualified accountants with a combined experience of over 50 years.

We offer business start-up advice, business planning, monthly & annual accounts,

VAT & tax submissions, full payroll service, company secretarial service.

E-mail: droberts@sr-accounts.co.uk

Telephone: 01303 862559

Mobile: 0751 1097707 Web: www.sr-accounts.co.uk

MANOR VETERINARY CLINIC



MANOR
VETERINARY CLINIC

We care for
them all great
and small

Lyminge Clinic: Methodist Church Hall - Mon, Wed & Fri pm

Tel: 01303 273203

www.manorveterinaryclinic.co.uk

STERRY'S OF HYTHE

Independent Funeral Director

Always here for you 24 hour service

Home visits on request

Choice of pre-paid funeral plans

01303 264400

41 High St, Hythe (op Lloyds Bank)

ANIMAL CHIROPRACTOR

Treating **HORSES, DOGS & CATS**



Back pain, neck pain, arthritis, stiffness & much more

Human clinics in Cheriton & Westgate

www.backtostraight.com

info@backtostraight.com

Tel: Will Wright 863460 or 07905 031850

Red Dragon IT Ltd

'Computer Specialists'

We offer the 'One Stop Shop' for all your computer requirements.

Our services include repairs, bespoke PCs, maintenance, peripherals, consumables and web design.

www.rdit.co.uk **01303 723456**

LYMINGE FOOD AND WINE

01303 862225

We are here to serve you

Mon. - Sun. 7:00am to 9:00pm

including Bank Holidays

National Lottery Here



Jubilee Farm

Organic Beef, Lamb, Mutton and Pork

Hay, Haylage and Straw available. Free local delivery

M&T Britton Farms, Jubilee Farm, Rhodes Minnis

Tel: 01303 862317 email: cavalryfarm@fwi.co.uk

Wildlife Gardening Services



One-off Consultations
Full Design Services
Landscaping and Planting
trees hedges meadow-beds ponds
Native trees and wildflowers



07513 427601

Or email: vivbattershall@gmail.com



Local Bookkeeper

Sole Trader & Small Business Accounts
VAT, Self Assessment, Payroll, CIS
& General Administration Services

Call or e-mail:

Tel: 01303 864229 Mob: 07885 458 304

e-mail: tash@bestbookwork.co.uk

www.bestbookwork.co.uk



PRACTICE LICENCE
NO.12405



Accountants' Club

THE DRIVING INSTRUCTOR

ROGER DOWLE

ADI QUALIFIED
PATIENT & PROFESSIONAL TUITION
FOR MORE INFORMATION OR TO BOOK A LESSON PLEASE CALL ROGER
07870939936

INTRODUCTORY OFFER, BEGINNERS ONLY, FIRST FIVE HOURS £80!

SEATHWAITE BOARDING CATTERY LTD.



Supporting Rhodes Minnis Cat Sanctuary
GREEN LANE, RHODES MINNIS, CT4 6XU

TEL: 01303 862243 (Registered charity 262245)

ONLY CATS BOARDED, IN QUIET COUNTRY LOCATION

Individually heated chalets. Single cat £6 per day, a reduction for 2 or more cats. All cats boarded with us must have current vaccinations against cat flu & feline enteritis. All profits from the boarding cattery go to support homeless cats in the Sanctuary.

RHODES MINNIS CAT SANCTUARY

has a wide variety of cats available to caring homes.

Luke Southwell Ltd.

Fast and Friendly Electrical Contractors

Fault Finding

New Installations

Board Changes

Testing & Inspecting



For free quotation 01303 863 203 / 077 678 21552



Gas, phone and internet, electricity -

When did you last check what you are paying ?

*We all know we should look for a better deal
but changing suppliers is a hassle - or is it ?*

I have spent many years helping local people reduce their utility bills. I can help you spend less on what you have to buy, so you can buy more of what you want.

Getting a quote is easy - ring Geoff Tolson on 01303 251516

East Kent Foot Care

Mobile Foot Health Practitioner

Jo Shapter BSc (Hons), MCFHP, MAFHP

Treating and managing common foot problems,
corns, callus, verrucae, thickened nails,
toe nail management, fungal problems,
diabetic foot assessments etc.



Call: 07745 532075

Member of the British Association of Foot Health Professionals

This space is available to advertise your local business

Please contact

The Editor - Peter Barnes at

pb@pbarnes20.plus.com or 01303 863737

NHS South Kent Coast - App receives 11,000 hits

The free NHS **Health Help Now** phone and web app has chalked up more than 11,000 hits in its first three months.

The average visit lasts 3mins 47secs – suggesting people are looking at the advice and services available for different symptoms. Since its launch in December it has had 11,000 visits from 7,000 users.

Dr Darren Cocker, Chair of NHS South Kent Coast Clinical Commissioning Group, said: "Many people end up going to A&E even if they only have a minor injury or illness. But this can lead to frustration and wasted time for many. That's why the **Health Help Now** app is so useful. It's very easy to use, and with a few button clicks, users can identify the most appropriate healthcare service for their needs. We hope that the app will have a significant role in reducing the number of unnecessary trips to A&E."

The app, which covers east Kent, north Kent and Medway, is proving so popular, other parts of England are also interested in using it. It works on mobile phones, tablets, laptops and desktop computers and suggests the most appropriate local health service at any time of the day or night. Select your symptoms, type in where you are and the app does the rest.

Using the app can help people get the advice they are looking for with no need to go to A&E. The app has information and advice for people of every age, from babies and teenagers to adults and the elderly.

It lists common symptoms and offers suggestions for treatment. If you need a pharmacist, for example, it will work out the nearest one to you, which is open, and give directions.

A more advanced interactive version, which allows personal information to be recorded, is also being developed for smartphones.

To access the app visit www.healthhelpnow-nhs.net, follow it on Twitter @NHSHealthHelp or like its Facebook page at www.facebook.com/nhshealthhelpnow.

COUNTRY FARE

CATERING SERVICES

Country Weddings, Christenings and All Family Gatherings, Corporate Lunches, Seasonal Parties & Celebration Cakes

Contact: Sally Burr Telephone: 01303 863642

Mobile: 07814 610995

Email: sallycountryfare@gmail.com



FRESHLOOK GARDENS

Regular lawn mowing service.
Garden design. Hard and soft landscaping.
General garden work, fencing and decking. Turfing
hedge cutting, small and medium tree work.

Water features, ponds and patios.

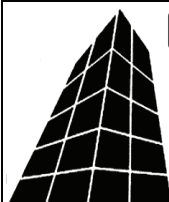
For free quotation ring Geoffrey Hogben

01303 844 680 / 07866 091633

sales@freshlookgardens.info

www.freshlookgardens.info

Established since 1990. Fully insured.



Filehurst Associates

Archive, Warehousing, Logistics,
Business & Household Storage.

Domestic & Commercial
removals and storage.

01303 239990 www.filehurst.co.uk

Browns

Sales & lettings
7 days a week



Over 40 years of Kent
village and country property

Elham 01303 840422 | Hawkinge 01303 892000
www.brownscountryproperty.co.uk

LYMINGE NEWSAGENTS

11-13 STATION ROAD, LYMINGE CT18 8HS

01303862566

**POST OFFICE, 'OFF LICENCE' and
CONVENIENCE STORE**

Dry Cleaning and Laundry, can deliver Papers

NEW OPENING HOURS

6AM TO 10PM EVERY DAY



Local Tradesman

J Tappenden

Established 36 years

Painter/Decorator/Builder

Tel 01303 862467

Mob: 077755 78008

Gecko Tree Care

Tree Dismantles, Crown Reductions, Crown Thinning,
Crown Lifting, Shrub Maintenance, Hedge Trimming.
Public Liability Insurance - EA Licensed Waste Carrier
ND Countryside Management - NPTC Certificates - Free
Quotes Office: 01303 864289 (Mon-Fri 9am-5:30pm)

Email: info@geckotreecare.co.uk

Web: www.geckotreecare.co.uk

Jackson Plumbing

Property Maintenance

Complete bathrooms and tiling

No job too small. Special rates for OAP's.

Telephone: home/evening 01303 270691
or daytime 07773 089398 or 07864 929826
(please note new mobile numbers)

BEAVER BUILDERS

Jon Daughters

Conversions	Driveways	Plastering
Roofing	Patios	Decorating
Carpentry	Drains	Plumbing

FREE ESTIMATES

Tel: 01303 863371

SIX MILE GARAGE LTD

Stone Street, Stelling Minnis, Canterbury, Kent CT4 6DN

- Car and light commercial servicing
- Class 4 and 7 mots and repairs
- Car and light commercial accident repair centre (insurance approved)
- Diagnostics bay with latest equipment
- Tyre bay with four wheel alignment and balancing
- Air conditioning servicing

Tel. 01227 709214 or 01227 709491, Fax 01227 709331

E-mail: office@sixmilegarage.co.uk

Trevor Law

Electrical Installations

Serving Elham Valley

for 30 years

Part P Registered

Telephone 01303 840950

J. V. Services

Mobile Mechanic

Servicing and Repairs:

- Garden Machinery
- Ride on Mowers
- Trailers & Horseboxes
- Quad Bikes
- Classic Cars

(Free collection and delivery)

Serve/Repair/Full Restoration:

- Compact Tractors
- Vintage Tractors
- Classic Tractors

Mobile: 078 0300 3047

Home: 01303 862963

john@jvserviceskent.com