

THE LYMINGE NEWSLETTER

For the communities of LYMINGE, ETCHINGHILL, RHODES MINNIS and POSTLING

<http://www.lyminge.org.uk/>

August 2014

Produced by
THE LYMINGE ASSOCIATION

Lyminge Association News

Don't be left out !

Thank you to all those who visited our 'Volunteer Stand' on 12th July and signed up to help us keep our villages the special places that we have all chosen to live. If you missed out please call Adrian on 862699 to see how you could help your village !

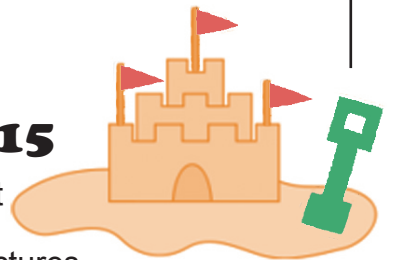
Garage Safari ~ our next event is the Autumn Safari to be held a little earlier this year in the hope of better weather! The date for your diary is Sunday 14th September at Lyminge Village Hall. Don't forget that you will also be able to book a table at the Hall if you want to ensure you are under cover !

Lyminge Calendar 2015

Now is the time to get your camera out and take some summer pictures for "Lyminge Through the Seasons" ready for a competition in the Autumn.

Your pictures can be of scenes or events and they don't have to be from this year, so look back in your collection and find that special picture !

For further information and Entry Form call 862699. It is FREE to enter !



Browns

Elham 01303 840422
Hawkinge 01303 892000

Sales & lettings
7 days a week

Over 40 years of Kent village and country property

THE local and regional
specialist. Why settle
for less?

www.brownscountryproperty.co.uk

rightmove Zoopla.co.uk PrimeLocation.com RICS

LYMINGE PARISH CHURCH SERVICES & ACTIVITIES

Church e-mail: office@lymingechurch.co.uk

Church Website: www.lymingechurch.co.uk

Sun 3rd Aug	8.00am	Holy Communion (CW order 2)
	11.00am	WOW (Ways of Worship) <i>followed by refreshments</i>
Wed 6th Aug	7.00pm	NO Holy Communion
	7.30pm	NO Open House Bible Study
Sun 10th Aug	8.00am	Holy Communion (CW order 2)
	11.00am	Sung Eucharist <i>followed by refreshments</i>
Wed 13th Aug	7.00pm	NO Holy Communion
	7.30pm	NO Open House Bible Study
Sun 17th Aug	11.00am	Family Holy Communion <i>followed by refreshments</i>
	6.00pm	Evensong
Wed 20th Aug	7.00pm	NO Holy Communion
	7.30pm	NO Open House Bible Study
Sun 24th Aug	8.00am	Holy Communion (CW order 2)
	11.00am	Sung Eucharist <i>followed by refreshments</i>
PLEASE NOTE there will be a NO Messy Church in August the next one will be on 21st Sept at 3.30pm		
Wed 27th Aug	7.00pm	NO Holy Communion
	7.30pm	NO Open House Bible Study
Sun 31st Aug	10.30am	Benefice Sung Eucharist at St Oswald Church, Paddlesworth

ACTIVITIES THIS MONTH

Coffee Morning – Tues 12th Aug from 10.00am to 11.30am

In the lounge at Wentworth Close - everyone is welcome to come and join with the residents for coffee and a chat
Contact Lynne 863010 if you would like to come but need transport

Mothers Union – No meeting in August

The next meeting will be on Wed 10th Sept leaving at 2.30pm from the lounge at Nailbourne Court for tea at Maureen's, Little Northleigh Farm
Contact – Sue Rawlings 862221

Prayer Shawl Ministry Group – No meeting in August

The next meeting will be on Wed 17th Sept at 2.30pm
This group meets in the lounge at Nailbourne Court to knit prayer shawls & pray for our world.
Tea and coffee are provided
Contact Madelaine Lewis 863582

Ethelburga Luncheon Club – Thurs 21st Aug at 12.00 noon

at the Coach and Horses Public House
Everyone is welcome and transport can be arranged,
Please contact Lynne Lane – 863010

PADDLESWORTH PARISH CHURCH SERVICES

Sun 3rd Aug	7.00pm	Said Holy Communion to celebrate St Oswald <i>followed by refreshments in</i> <i>The Cat and Custard Pot</i>
Sun 10th Aug	9.30am	Morning Prayer <i>followed by refreshments</i>
Sun 17th Aug		No Services
Sun 24th Aug	6.00pm	Evensong <i>followed by refreshments</i>
Sun 31st Aug	10.30am	Benefice Sung Eucharist <i>followed by refreshments</i>

LYMINGE METHODIST CHURCH

Visitors are very welcome to join us at our weekly service at **11am** and invited to share fellowship afterwards with a cup of coffee/tea.

3rd August - Mrs Georgia Reed

10th August - Rev Alan Hewitt

17th August - Mr Ian Couchman/Rev Kevin Taylor
(incl. Holy Communion)

24th August - Mr Colin Pearson

31st August - Mr Dudley Shipton

RHODES MINNIS CHURCH

This small Chapel in beautiful countryside holds a weekly Sunday Service normally at 9.30am followed by coffee and biscuits. A warm welcome is extended to any visitors.

3rd August Mrs. Georgia Reed

10th August Mr. Colin Pearson

17th August Rev. Kevin Taylor (Holy Communion)

24th August Mr. Tim James

31st August Mr. Dudley Shipton

POSTLING CHURCH SERVICES

3rd August	6.00pm	Evensong
10th August	9.30am	Family Service
17th August	8.00am	Holy Communion
24th August	9.30am	Family Communion
31st August		No service in Postling Church

A week of Coffee Mornings in Postling Church
Monday 4th August to Saturday 9th August, from 10am to 12 noon. A chance to see the display 'What did your Grandparents do during the First World War?' Stories and pictures of the Grandparents (or Great Grandparents) of the people of Postling.

L.E.T. (Lyminge Ecumenical Team)

Lyminge Churches working together

Come to the Parish Church at 7pm on **Friday 1st August** and enjoy a **free BBQ**, followed by music from the 60's and 70's played by "**Just 5**"

Lyminge Newsletter

Terms & Conditions. Copy deadline is 18th August

Please email your copy in word.doc format to the editor (pb@pbarnes20.plus.com). Your payment must be received before your article or advert can appear in the Newsletter. Please leave your payment in a sealed envelope at the Lyminge Post Office or at the Lyminge Library. **Your name, organisation and telephone number must be included on the envelope along with your advertisement or a copy.**

Business adverts cost £9.50 per month or £95.00 per year. Personal and charity adverts and articles from £1.50 per month, or £15.00 per year depending on size. The annual rate offers 12 entries for the price of 10. Please make cheques payable to 'The Lyminge Association'

If you do not have email, a typed paper-copy can be left with the payment. **Further details from Peter (editor) on 01303863737.**

ELHAM VALLEY EXCURSIONS

buzzlines
in the discovery lane...

Date	Destination(s)	Cost
Tuesday 2 nd September	NEW! Pairi Daiza Gardens and Animal Park, near Mons, Belgium. Giant Pandas are just the beginning! Discover why this wonderful 55-hectare site attracts well over a million visitors a year. Perfect for animal and bird lovers of all ages!	Adults, Children over 11 £57 Children aged 3-11 £50 Children under 3 £35*

*Please note you must bring a child car seat for children under 3

These excursions will only call at villages of the Elham Valley between Bridge and Etchinghill. Departure time will be between 07:00 and 08:00hrs (you will be advised on booking); we expect to have everyone home from Belgium around 22:00-23:00hrs

Further trips are planned for October and November and will be announced shortly. To enquire or book, please search **Buzzlines** on-line or call the Buzzlines Sales Team on..... **01303 261870**

Lyminge Bowls Club

Here are the home fixtures for August, where a warm welcome will greet you if you want to come along and watch. Our bar prices are good!

Saturday 2 nd	A mixed team from Kearsney visit for the afternoon
Thursday 7 th	The first round of the Club Pairs Competition – starting 6.00 pm
Friday 8 th	Ladies Captain's day
Tuesday 12 th	Ladies from Folkestone visit our ladies
Thursday 14 th	Second round of the Club Pairs Competition – starting 6.00 pm
Saturday 16 th	A mixed team of Barham bowlers visits Lyminge
Sunday 17 th	An all day Mixed Pairs Competition – starting at 10.00 am
Sunday 24 th	An all day Men's Pairs Competition – starting at 10.00 am
Thursday 28 th	Third round of the Club Pairs Competition
Saturday 30 th	Members of Springhouse Bowls Club in Essex pay us a visit
Sunday 31 st	Ladies and Gents visit from Boughton to pitch a team against us.



All games (except where mentioned) start at 2.30 pm. In addition, club members will be found playing on the green on Wednesday afternoons and Friday evenings. If you want to have a go, come along and ask. Call 863495 for further information.



Lyminge Friends

In July, **Don Wilks** kept us entertained with an excellent talk on Cyprus in Spring and the Garden Party at Fran & Rod's was very successful.

In August, **John & Jane Buss** will be returning on **Wed 6th** with a talk entitled **Churchill at Chartwell**. Also in August, we have a trip to **Teapot Island** on **Wed 27th**. There are a couple of spaces in the Minibus if anyone wants to come; the cost is £7.00 for non-members.

Meeting are 10.30 - 12.30 in the Rigden Room of the Tayne Centre. We don't have membership fees, only the monthly entry fee, currently £2.00, which includes refreshments.

We are a friendly social group and always welcome new members. If you'd like to talk to one of us first, please call 863500 or 862044

News from the Jubilee Centre.....

Interior Decoration - the Centre will be redecorated over the summer but disruption will be kept to a minimum. **Our thanks to District and County Councillor Susan Carey** for her grant to buy new chairs.

After three years it is all change in the 1950s Lounge so if you donated any of the 1950s items for the room and would like them back, please pop in to collect or contact Matthew.

With new seating we are creating a welcoming comfortable space to accommodate about 20 people that will be ideal for support groups to use and we are contacting local and national organisations such as Carer's Support. **What type of support group do you want to see here?** Cancer, dementia, grandparents as parents, diabetes? What would be of most help to you locally? If you know that support isn't available for something close to your heart, **for everyone not just older people**, you could use our room to get the ball rolling for a new group.

We are having a **Summer Party on Sunday 24th August** in the Tayne Centre. It is a free event with a buffet and entertainment and as it will be run mainly by volunteers; willing drivers are needed to pick up Clients at 12noon and take them home about 3.30pm. If this is something you can do or you wish to go, please contact Matthew.

Do you sometimes feel lonely? It's well known that our Centre is the **best way to combat loneliness** for our Clients and anyone else with a lot of time - just ask our Clients or Volunteers! Call for more info.

We are often told how lucky we are to have the Centre in the heart of the village but it can come as a great surprise to many - not only that we offer so much to the whole community but that many of our services are underused! We just carry on doing what we do best, providing high quality services to both our local older people and the wider community but somehow the message isn't getting across. We really need, as a community, to help the centre to thrive to ensure its future for years to come. Helping us spread the word could be the best insurance policy around as it will make sure that we are here when the day comes that you need us. **Don't wait until you have no choice but ask for our help**

There are lots of ways you could get involved, you could **buy or donate items** at the charity shop, use one of our services, **hairstyling and chiropody are open to all ages**, our **cafe is also open to everyone** and also open **Saturday mornings**, join our **100+ Club**, hire one of our rooms for functions or events, **donate prizes** for raffles or **volunteer**, tell people about us, especially those who may need our services and most importantly, come in, use us, meet the team and look at what we do. The centre is here for the whole community so come and be surprised by what you find.

Through generous donations given for the purpose we have arranged a trip to the Houses of Parliament on Thursday 25th September at 8.45am. There will be an audio tour followed by afternoon tea taken in the Terrace Pavilion overlooking the river Thames. Thanks to the generosity of the Elham Valley Lions - again - and an anonymous donor, the trip is free for our Day Centre Clients and is open to all villagers at a cost of £46.50. Call for more info.

We have a new **Activities leaflet** available with a timetable of all our activities - too many to mention here but please remember that as August is a holiday month, some may not be available. There is **no Communion Service** in August.

For more information about any of our activities or services please call **01303 269602** and ask for **Matthew or Sue** or why not just pop in and see us?



HYPHE AND FOLKESTONE UNIT SAVE A LIFE COURSES

Hythe and Folkestone Unit is offering free Save a Life Courses for any Group or Society during Autumn 2014 or Spring 2015.

They are prepared to come to your meeting place for a group of at least eight people, youngest age should be twelve years.

The course will last approximately two hours and will cover: CPR (Resuscitation) for Adults, Children and Babies, Recovery Position and Choking.

If you are interested in arranging an evening or afternoon for your Group please contact:

Unit Manager John Horn: 07771 541522 or

Maureen Lewsey:maureenlewsey@btinternet.com



HAIRDRESSING at THE JUBILEE CENTRE

Monday and Friday, open to **all** ages

Prices

Wash & Blow Dry	£9.50
Wash & Set	£8.50
Wash, Cut & Blow Dry	£14.50
Gents Cut	£6
Childs Cut	£5
Perm	£33
Colours/tints from	£25

For an appointment, please call Lyndsey on 07976280132

Our recently modernised salon is **available for hire** on Tuesday, Wednesday, Thursday and Saturday. Please contact Cleo or Matthew for more details on 01303 269602



KE (Kent East) Links Senior Section

KE Links Senior Section is a County Girlguiding Unit for girls aged 14 – 25. All KE Links members are given the opportunity to receive support in the Senior Section Programme, to take part in fun badges, in day challenges, be involved in special events and most importantly to have the opportunity to make new friends and create special Guiding memories.



At the first meeting in Lyminge 18 girls, who came from a wide area of East Kent, took part in a fun badge evening. There are now 39 girls in the Unit and it is still growing! The following meetings at Lyminge will be on the 11th September, 9th October, 6th November and 4th December from 6.46pm – 8.45pm.

Girlguiding is the leading charity for girls and young women in the UK. We give girls and young women a space where they can be themselves, have fun, build brilliant friendships, gain valuable life skills and make a positive difference to their lives and their communities. We build girls' confidence and raise their aspirations.

For more information or if you would like to join please contact **Janet 07795 511355** or thewilsonsabout@hotmail.com

Rhodes Minnis Evening Circle

Our speaker in July was Dick Bolton who gave us a talk and showed us colour slides of Romney Marsh Churches. Fourteen in all, each church having its own unique history which we found very interesting.

The winner of the competition was Molly, with Connie 2nd, Marion 3rd and Daphne 4th. We also welcomed a new member and 3 visitors.

Our next meeting is on the 20th August when Eileen Morgan is going to teach us gentle exercises. We meet at Rhodes Minnis Village Hall at 7.30pm, and visitors will be made very welcome.

For further information contact Jaqui on 862044 or Marion on 862913.

Monday 4 August from 2.30 pm to 4.00 pm Lyminge Library

The Lyminge Family History Group will be meeting **to commemorate the 100th Anniversary of the 1st World War**

Join us for refreshments & poetry reading



We will also launch the Lyminge Historical Society Publication **'LYMINGE - A HISTORY: PART 5 LYMINGE MEN REMEMBERED'**

This £5.00 publication includes research carried out by the Group into the men from Lyminge who died during the 1st World War

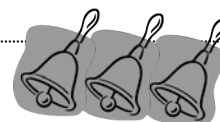


Lyminge Dramatic Society

Make a note in your diary, store on your phone or mark on your calendar the dates for our exciting production of **Hi-de-Hi!** We are putting this, bound to be popular, show on from Wednesday **26th November to Saturday 29th November** inclusive. Come and be entertained by the glamorous Yellowcoats, the dulcet tones of Gladys Pugh and the earthy humour of Ted Bovis to name but a few of the well known characters who will be entertaining you. We will let you know in good time where and when you can purchase tickets.

If you would like to join LDS contact Alex on 01303 862622; we would welcome all offers of help from treading the boards to helping backstage.

Lyminge Handbell Ringers



Lyminge has its very own Hand Bell group who enjoy playing a wide range of music throughout the year. Although we play for fun we also love to perform at local celebrations, fetes and family parties. You can come and hear us play before booking if you wish to select your own choice of music. We have an increasingly wide selection of music to choose from. All we need at the venue is a large table for our bells and music, room for up to 11 players and a minimum donation of £40 for our charity, the Nepali Children's Trust. A small contribution to travelling costs is also much appreciated for bookings more than 5 miles from Lyminge. Weekends and evenings only please and plenty of advance notice is helpful. Want more info or make a booking? Simply call **Ro Edmond on 863201** or email **welldorm@aol.com**

Lyminge Weather Statistics – June 2014

With thanks to Mr D. Godden for these weather statistics and notes.

	Temperature (°C)	Air Pressure (hPa)	Wind Speed (mph)	Total Monthly Rainfall
Maximum	27.4 (14/06/14)	1013 (12-18/06/14)	22.0 SW (18/06/14)	116.5 mm (4.57 in)
Minimum	4.9 (06/06/14)	990 (22/06/14)	Highest Daily Rainfall	44.00 mm (1.57in) (10/06/14)

A warm month, with moderate winds and a little above average rainfall

Etchinghill W.I.

Members were welcomed to the July meeting by Barbara Syrett. Birthday posies were presented to June Price, Marilyn Norton, Pat Kent, Sylvia Clark, Sheila Green and Peggy Banks.

A crab apple tree has been planted close to the village hall in memory of Daphne Melrose, a very popular member. Her son and daughter have been invited to the September meeting to unveil a plaque dedicated to her. Members were also asked to cook an apple recipe and bring it along to be judged at that meeting. Tony Harris then spoke about his experiences as a film extra when a small part of the film "Dunkirk" was filmed in Whitstable.

The competition winner for a pin up photograph was Rosemary Piddock and the winner of the flower competition was Daphne Andrews.

After a very pleasant afternoon we enjoyed tea, the hostesses being June Manton and Marilyn Norton.

There will not be a meeting in August, next one is on Tuesday, 16th September at 2.30pm in the village hall when our speaker, Sheila Boyd will talk about Queen Victoria's dreadful uncles. For further information, please contact Barbara Syrett on 265229 or Rita Warner on 863503

Etchinghill Update August 2014

Etchinghill Farmers' Market

The winner of the July Market raffle prize was Roy Bowling of Lyminge.

The August Farmers' Market will be held in Etchinghill Village Hall on Saturday morning 2nd August from 10 to 12.30pm.

Open House

Open House is held every Monday morning in Etchinghill Village Hall from 10 to 12. All welcome for coffee and a chat.

Open House Diary

Monday 11th August A visit to Bladbean Stud gardens, 6-8.00pm, £7.50 each to include a tour of the garden, time to wander, tea/coffee and cakes and a gift of home grown dried strawberries. Highly recommended. Please book via Barbara.

Cinema Club

The next ERA Cinema Club meeting will be on Monday 18th August at 7.15 pm in Etchinghill Village Hall. The film will be **Sunshine on Leith** starring Jane Horrocks, George MacKay and Peter Mullen.

Etchinghill Residents' Association would like your ideas for something to mark the entrance of the village (golf club end). Please contact Geraldine at gpmccombe49@gmail.com with your suggestions.

BBQ/Picnic/Petanque Competition at Etchinghill Village Hall on **Monday 25th** August from 10.30 am. BBQ supplied bring your own food. Please email gpmccombe49@gmail.com to register to play.

Park House Sanctuary Boarding Kennels & Cattery

Park House, Stelling Minnis CT4 6AN

Brick-Built Heated Kennels Daily Walks Reasonable Rates

All dogs must be fully inoculated
Heated Cat Chalets Quiet Area
Inspection Invited. To book or for further
information, call us on
01303 862622
or email lord.whisky@btinternet.com
www.lordwhisky.co.uk

Lyminge Village Hall 100 CLUB RESULTS

The monthly winner of the
Village Hall 100 Club
was drawn at the Coach & Horses
in June 2014

The winner was
Veronica Holker ticket number 63
If you would like to join our the club then
please contact
Niki - 812651 or Sue - 862696

Village Hall Management Committee Reg Charity 281845



Hythe Aqua Swimming Club is expanding its
nationally accredited learn-to-swim programme
and now has vacancies in its lessons that are
held on Tuesday & Thursday evenings at Hythe
Pool.

To book your place

Tel: 01303 862353 or checkout our website:
www.hytheaqua.org.uk

ROUNDWOOD HALL PAY & PLAY GOLF CLUB

Behind the line of conifer hedges on
Stone Street (B2068) you will find a
friendly & welcoming short golf course.

9 holes - £8.00 18 holes - £12.00
£2 more at Weekends & B/H

Stone Street, Lyminge
Folkestone, CT18 8DJ
01303 862260

New 7 day ticket
only £35.00



FRIENDLY RELAXED AFFORDABLE
www.roundwoodhall.co.uk

Coach & Horses



Senior Citizens Lunch Mon-Sat - £6.95pp

Friday Food Theme Nights (6-9pm):

1st August - Mexican
8th August - Italian
15th August - Indian
22nd August - Polish

BEER FESTIVAL - 22-25th August

Live Music and All Day BBQ 23rd August

Pub Quiz - 27th August - 7.30pm start

Bookings and Contact: 01303 862694

Lyminge Archaeological Project 2014

Work is well under way with Reading University's
ambitious 3rd year on Tayne Field. There will be
site tours every Saturday, weather permitting, of
the dig site as in previous years. These start at
2pm promptly with Dr Gabor Thomas
interpreting the progress and significance of the
excavations to date. Significant finds will also
be on display. There will be an even bigger
Open Day on Saturday 16th August, running
from 10-4pm, including the opportunity to enjoy
the lunchtime BBQ at The Coach and Horses.
Activities of interest to all age groups will take
place plus demonstrations of different
archaeological techniques, a Saxon re-
enactment camp, and a chance to get up-close
to the work of the archaeologists.

For more information about the progress of the
dig see the Lyminge Archaeological Project's
blog.

Rhodes Minnis Village Hall

NO Beetle Drive in August

Next one on Friday 26th September
in the hall at 7.30pm

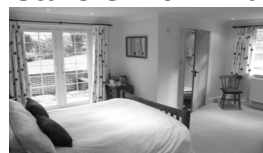
Teas, coffee, juice and biscuits provided.

There will also be a raffle

Adults £2 - Children 50p



Bridge Cottage Bed & Breakfast 4 Stars Silver Award



Luxury accommodation in a tranquil setting
Chris & Alison, Shuttlesfield Lane, Ottinge
01303 862933
www.bridgecottagesimplybandb.co.uk

Elham Sports Club Welcomes New Members

Tennis members can either book and play, or join the friendly club sessions.

- * If you pay your subs by in time you can enter our ballot for Wimbledon tickets!
- * A fun Summer Tennis Tournament will again run this year
- * Tennis coaching is available with David Whitehouse
- * Badminton runs Wednesday evenings in Village Hall



CONTACT INFORMATION

Chairman: Richard: 3salrich@talktalk.net

Membership & Treasurer: Mike: m.ridley736@btinternet.co

Adult Fun Tennis Tournament: Nicky: nickyjohnson128@btinternet.com

Tennis Coaching: David: whitehouse79d@gmail.com

Badminton: John: jph99@btinternet.com

TENNIS - CLUB SESSIONS

Tuesdays 10.00 non competitive: Sally: 3salrich@talktalk.net
18.30 : club John: jph99@btinternet.com

Quiz Night Save the date!



13th September 7pm
Etchinghill Village Hall
Tables of 6 or 8, £3.00 per head

In aid of Alongside Africa, a local charity that supports disadvantaged and marginalised communities in Uganda.

Raffle / craft display and sales

To reserve your table call
01303 863 599 or 07974 073 736

Rhodes Minnis Village Hall Summer Flower Show Saturday 2nd August 2014

Schedules and entry forms from:

- Daphne Andrews 862865
- Online at www.rmvh.org.uk
- Lyminge Library

Show starts at 14.30 – Rhodes Minnis Village Hall
Refreshments, raffle, tombola, bric a brac, cakes and produce. All Welcome

For more information please contact

Janet Fry : show@rmvh.org.uk or 01303 863177

Reg Charity: 800345

Honest, hard working, enthusiastic...

... 15 year old looking for all types of summer work.

From cutting your lawn to clearing your shed! Or doing your shopping. Seriously competitive rates and many happy customers.
Call Edd on 01303 862165 or 07580236268.

You won't regret it!



August in the Garden Sponsored by Lyminge Gardeners' Society



The most important thing in August is to sit back and enjoy your garden. All your efforts should have rewarded you with an abundance of colour, scents, fruit and vegetables. If you are planning a holiday this month don't forget to move potted plants into the shade before leaving and why not try sitting them in a shallow container filled with water? Remember to water wisely, most plants will do much better with a weekly drenching than a frequent dabble of water.

As well as watering deadheading is the other main job this month. A few minutes deadheading each day will keep the garden looking smart whilst encouraging plants to continue flowering.

Now is the time to fill gaps in borders with Autumn colour. Plants that are widely available at this time of year without costing the earth are Coneflowers and Rubeckia. They may already be flowering and once planted will provide colour for this Autumn and should return for many years.

The school holidays are the perfect opportunity to encourage the next generation of gardeners. Children will love to grow their own crops. Easy choices include cress, sunflowers and salad leaves. For ideas and free downloads to keep the children occupied this summer holiday take a look at www.naturedetectives.org.uk
Our summer show is on Saturday 9th August at the Tayne Centre; why not pick up a programme from the Post Office or Age UK and see if you have grown anything that could be entered, or come along at 2pm to see the exhibits and for inspiration and ideas for next year. We have two special flower arranging classes this year, to commemorate the anniversary of the outbreak of the Great War. The first is an arrangement entitled 'In Flanders Fields' and for the 70th anniversary of D-Day we are looking for arrangements in a model D-Day landing craft (crafts are available if you do not wish to make your own). The prizes for the D-Day arrangement will be presented by Mr John Long, Chairman of the local Normandy Veterans Association. A warm welcome as well as refreshments and homemade cakes await you.

We still have places left for our annual coach outing on Tuesday 19th August to RHS Garden Hyde Hall in Essex. The cost is £11 for members and £16 for non-members; this includes the coach and entry to the garden. Tickets are available now from the Age UK centre in Station Road.

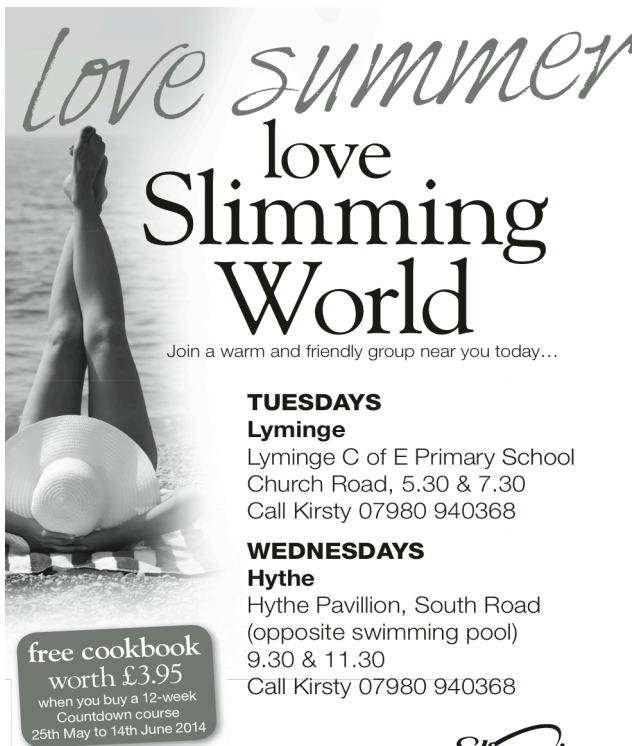
AUGUST 2ND
Its NUMBER 1
It's the
ETCHINGHILL
VILLAGE MARKET
FRESH LOCAL FRUIT

Free parking
Bacon bap, £1.20

Saturday 2nd August

Etchinghill Village Hall from 10am

For further details contact John on 863819. Charity No, 302736.





Love summer
love
Slimming
World

Join a warm and friendly group near you today...

TUESDAYS
Lyminge
 Lyminge C of E Primary School
 Church Road, 5.30 & 7.30
 Call Kirsty 07980 940368

WEDNESDAYS
Hythe
 Hythe Pavillion, South Road
 (opposite swimming pool)
 9.30 & 11.30
 Call Kirsty 07980 940368

free cookbook
 worth £3.95
 when you buy a 12-week
 Countdown course
 25th May to 14th June 2014

slimmingworld.com
 0844 897 8000  




NURSE PLUS
 Supporting Carers

Offering personalised care & support at home for

- * Elderly * Physically Disabled * Learning Disabled
- * Dementia * Complex Care * Mental Health
- * Home from hospital and more...

Our trained staff are available 24 hours a day, 7 days a week, offering assistance with personal care, domestic work, getting in and out of bed, bathing, day trips, social inclusion, assistance getting dressed and much more..

Registered with the CQC Care Quality Commission

Call today & see how we can help
01303 250200
 Direct payments & Kent card accepted
 homecare@nurseplusuk.com www.nurseplusuk.com

Editor: pb@pbarnes20.plus.com

9

In Aid of Lord Whisky Sanctuary Fund

Registered Charity: 283483. Park House, Stelling Minnis, Kent CT4 6AN Tel: 01303 862622 Fax: 01303 863007 www.lordwhisky.co.uk ~ lord.whisky@btinternet.com

BOOT & LATE SUMMER FAYRE

Saturday 23rd August At Park House, Stelling Minnis, nr Canterbury CT4 6AN Boot Fair from 8am (Cars £6.50/Vans £10) Entertainment from 12 noon Lots of stalls ~ Tombola and Raffle ~ Refreshments Admission by donation – Plenty of free parking

'WINE & WISDOM'

Saturday 30th August, 7pm for 7.30pm at the Lord Whisky Tea Rooms £7.50pp to include light refreshments. To book your table, phone 01303 862349 or 01303 862622

Royal British Legion
Elham Valley Branch

The September meeting of the Royal British Legion Elham Valley branch will be open to the general public when guest speaker will be George Harvey OBE who will talk about the history of British Army guns from Brown Bess to the present day. He will be bringing specimens to handle too. This meeting will be held on Thursday 4th September at 7.30pm at Age UK Lyminge.

We are also organising a coach trip to the Isle of Thanet Festival of Remembrance on Friday 24th October, to be held at 7.00pm at the Winter Gardens Margate. The main guests there will be the Band of the Royal Engineers with supporting acts. Maximum price for a ticket is £23.50, to include transport. Again, non-members would be most welcome.

If you would like to join us on either of these events please let me know on 01303 862779 or email to sjfos@fsmail.net

Susan Foster Secretary, RBL Elham Valley Branch

The Original Saturday Market
Trading over 3 years



SATURDAY MARKET
16th August
9am to 1pm



Tayne Centre, Church Rd, Lyminge

Come and browse, buy and have breakfast – bacon or sausage roll Tea, Coffee and Cakes....and more
 All profits to Tayne Centre Renovations Fund

01303863737



Lyminge Pre-School



'OUTSTANDING' - in every category
Ofsted Feb 2011

We are now open between 8am and 6pm
ALL YEAR ROUND

We are a well established pre-school with committed, enthusiastic and highly qualified staff passionate about providing the highest standards of childcare.

To arrange to meet the team, please call:
01303 863149 (day) or 07709420736 (eve).

Alternatively, email lymingepreschool@gmail.com and visit our website www.lymingepreschool.org.uk

Rhodes Minnis Toddler Group



We are a small group open to mums, dads, grandparents and carers who meet on Thursday mornings at **Rhodes Minnis Village Hall** any time between **10 am – 12 noon** during term time. Come and have a tea/coffee while having a friendly chat as your child plays. £1.50 per session (first session free)

'Phone Elaine on 01303 863096 for more information

Lyminge Baby and Toddler Group

Calling all parents, grandparents or carers with children under school age at a loose end on Tuesday mornings. We meet every week [during term time; **currently on holiday until 11th September**] at the Tayne Centre in Lyminge between 10.00am -12noon to give the children a chance to play and interact with others the same age. We offer a wide range of craft and play activities, including trikes, bikes and slides to painting books and jigsaws.

We charge £1.50 per session (1st session free), which includes 'half time' refreshments for adults and children.

ETCHINGHILL BABY AND TODDLER GROUP

We are a friendly toddler group, which caters for babies and children from 0 to school age. Tea/coffee and healthy snacks are provided.

In dry weather there is outside access for the children. Crafts and a music session are provided each week. We meet on Wednesdays between 10am and 12pm

If you have any queries please contact

Kathy Robinson 07930919340

"One of the most sincere forms of respect is actually listening to what another has to say."

Bryant H. McGill

Shuttlesfield Barn – 4 Star Gold – Self Catering

Rural location. Two bedrooms, ensuite shower and wetroom. Disabled facilities. Short and longer stays.



Families, dogs, horses welcome. Located on walking, cycling, riding routes. Heated outdoor pool in summer.



Info@shuttlesfieldbarn.co.uk Tel:01303862729

LYMINGE HISTORICAL SOCIETY

The next LHS talk is on
Tuesday, 2nd September
7.30pm at the Tayne Centre

1st World War Memorials of East Kent
Speaker: John Buss

New members and visitors are welcome.
Refreshments will be served.

Lyminge Historical Society Mobile Tel. No.
07759 260816



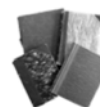
LYMINGE HISTORICAL SOCIETY

Presents

The amazing WW1 diaries of
Sister Edith Appleton OBE RRC

An illustrated talk by
Dick Robinson - Edie's great nephew with Jane Buss as the voice of Edith Appleton

Tuesday
7th October
7:30pm
Tayne Centre
Church Road
Lyminge



For this exceptional evening, advance tickets are available for non-members & visitors through Laing Bennett, or at Korf House (opposite the Lyminge Food & Wine Store) at £4 each. For members, of course, entry is free.

Part of the LHS's WW1 Commemorative Programme

Refreshments will be served.

Tel. No. 07759 260816

Website: lymingehistoricalsociety.co.uk



Lyminge Gardeners' Society



**EVERYONE IS WELCOME AT OUR
SUMMER SHOW**

**SATURDAY 9TH AUGUST
THE TAYNE CENTRE**

Staging of Exhibits 8.30am to 10.30am

Doors Open at 2pm

Refreshments Available

Classes include: flowers, veg, photography, cooking, child only, and 2 special classes to commemorate the anniversaries of D-day and the outbreak of the Great War.

(List available at Lyminge Post Office or Age UK) Entries from new members, visitors and children are most welcome. Help is available from 9am for first time exhibitors who would like some guidance.

Followed by

**'OUTING - RHS GARDEN HYDE HALL, ESSEX'
Tuesday 19th August.**

Tickets are available **now** at the Age UK centre

Members £11, Non-members £16

Includes coach & entry. For information or to become a member call Veronica on 862264

Its Party Time with Music On A Friday

St. Mary's and Ethelburga Church
1st August 2014

Featuring **Just Five**

playing music from the 60 & 70's
FREE ENTRANCE with **FREE BBQ** and
WINE starting at 7pm: Music from 7.30pm
SEE YOU THERE??!!

ETCHINGHILL RESIDENTS' ASSOCIATION Etchinghill Cinema Club FILM SHOW

"SUNSHINE ON LEITH" PG

Monday, 18TH August

Etchinghill Village Hall at 7.15pm

Entrance Fee £5 per head

includes Membership

FREE Refreshments and Raffle



Lorraine 863333 for info.

AUGUST BANK HOLIDAY MONDAY 25TH August 10.30 AM

VILLAGE HALL ETCHINGHILL KNOCKOUT PETANQUE COMPETITION



**& BBQ
FOR ALL
THE
FAMILY**



**A LARGE CHARCOAL-FIRED BARBECUE WILL
BE PROVIDED - JUST BRING YOUR OWN
MEAT, PICNIC AND REFRESHMENTS**

To register to play please contact:

Dave McCombe, preferably by email
dmccombe1@gmail.com or **07939 076617**

Please note that, in the event of inclement weather, the event may be cancelled without notice. Organised by the Etchinghill Residents' Association

www.etchinghill.info

SHEPWAY LIFELINE HELPING PEOPLE TO LIVE INDEPENDENTLY IN THEIR OWN HOME FOR LONGER

The service they are renowned for is the red button pendant that is worn around the neck or wrist. In an emergency, when it is pressed, it calls for emergency assistance. The Lifeline really is a life saving service and is highly valued within the community. By enabling people to live in their own homes for as long as possible, it avoids the need for expensive residential and nursing home care.

Shepway Lifeline is Telecare Services Association accredited and has an innovative 24/7 monitoring centre, supplying all facets of Telecare alarms, including care and security solutions for vulnerable individuals, lone workers and local businesses.

To contact Shepway Lifeline: -

Phone - (01303) 242615 or 242971

Address - Shepway Lifeline, Civic Centre, Castle Hill Avenue, Folkestone, CT20 2QY

Email - lifeline.proactive@shepway.gov.uk

Website - www.shepway.gov.uk/lifeline

The Lord Whisky Sanctuary Fund

Registered Charity No: 283483

Come and visit

The Lord Whisky Tea Rooms

at Rhodes Minnis CT4 6XY

(turn at Six Mile Garage on the B2068)

Open daily from 10am—4pm

for breakfasts, lunches, teas and snacks

Fish & Chip Supper every Friday evening
from 6pm to 9pm

(orders taken from our normal menu)

We will also open at times to suit you for Birthday
Parties, Wakes, Business Meetings, Club Meetings,
Seminars etc.

Contact us on 01303 862622/862349

or email us at lord.whisky@btinternet.com

www.lordwhisky.co.uk

Elham Valley and Wye Lions Club

Thanks to those who participated in our Easter Egg
draws; helping us to raise about £1,500. Particular
thanks to the Coach & Horses, Kings Arms Elham,
Rose and Crown at Stelling Minnis, the Drum, Cat &
Custard Pot, and Black Horse at Monks Horton.

Calling all golfers, our annual **Charity Golf Day** will
be held on Friday 5th September, at Sene Valley
course. Please call or visit our web-site for details.

Following our appeal for new members, we are
delighted to report we now have two new members.
We could still do with some more members, so if you
might be interested, please call us on 01303 862837
or visit our web-site at www.elhamwylions.org.uk.

The Folkestone Cat Sitter

Folkestone, Hawkinge, Lyminge, Etchinghill and surrounding areas



07768 816251

www.folkestonecatsitter.com
info@folkestonecatsitter.com

'Pet and People Photography Project'

*Hello, my name is Gwen and I'm a local
photographer who would like to photograph you
with your pet/pets. If you have a beloved
animal/s in any shape or size, then please get in
contact with me.*

*I am also looking to photograph anyone who has
an unusual or interesting hobby.*

I look forward to hearing from you.

070809301743/01303 863612

e-mail: gwenmortimore@hotmail.com

**All participants will receive a copy of their
photographs in exchange for your time**

Letters to The Editor

Singing at AgeUK

You may remember that in January last year we ran
an article about the monthly Singing for Health
sessions at AgeUK Lyminge. The NHS funding had
stopped in July 2012 and there was no singing until
The Lyminge Association gave a grant of £90 as start
up money. Gillian Heywood appealed for ideas for
ways to increase this and several kind donors came
forward with offers of donations, some anonymous,
some from the Lions and some from the attendees at
the monthly sessions. This money enabled the
classes to continue until the end of March this year.
Gillian was grateful, but not satisfied. Last December,
she applied to the new Health Commissioning Group,
for funding for the next year. With a lot of hard work
and nudging the request went to a committee on 2nd
July and funding was agreed for two years, backdated
to April of this year. So the fun and excitement, which
Adrian Bawtree leads, will now continue till March
2016. **Well done Gillian!**

I would like to apologise . . . for sending out

leaflets in support of the Fruit and Veg store, giving
the impression it would be reopening on 14th July.
Sadly however, Adrian decided not to reopen due to
lack of support. So a sad time for all of us!!

So thank you to Adrian, and also to all of you for
reading my leaflet. I can only hope one day someone
will reopen a store as handy as Adrian's. He tried to
support the community by allowing others to sell their
wares within his store. I was one of them, selling
chutneys and marmalades using ingredients that
came mainly from Adrian's store.

I will continue to do these lines but sadly its back to
finding a new, good and reliable source of produce.
Wishing Adrian all the best and 'Thank You' for giving
me the opportunity to do my bit within the community
and hopefully it will continue.

Peggy Bowling

Road Safety

I would like to raise awareness of an urgent safety
issue of walkers using the busy winding lane between
Etchinghill and Lyminge.

Recently, while travelling from Etchinghill to Lyminge
on this bendy stretch of road, I became aware of
numerous vehicles coming towards me at speed.
Suddenly they became conscious of three walkers
coming towards them. Fortunately, I had come to a
halt as I could see the cars swerving over the road to
miss the walkers.

My own view is that this is a highly unsuitable stretch
of road on which to walk and there is no footpath as
an alternative. The walkers are endangering the lives
of both themselves as well as the car occupants.
Could both Lyminge and Etchinghill come up with
some suitable suggestion (e.g. signage) in order to
prevent a serious accident happening in future?

Ken Duckett

TAYNE CENTRE Hall HIRE

Previously known as the
Lyminge Methodist Church Hall



Clayson Hall

1 October to 31 May (including heating) £9.00 per hour
:£32.00 per 4 hour session :£64.00 full day
1 June to 30 September
£6.50 per hour :£23.00 per 4 hour session :£46.00 full day

Rigden Room (Parlour) with heating, if required*
£6.50 per hour all year (*electric - over heaters).

Burren Room with heating, if required*
£5.00 per hour all year, (*electric - over heaters)

Overnight Stays

1 June to 30 September £40; 1 October to 31 May £55

For any enquiries please call **07971 722 401**

ETCHINGHILL VILLAGE HALL HIRE FEES

The next time you are thinking of holding a function you should try Etchinghill Village Hall, which holds the highest Hallmark accreditation level, with its excellent facilities, including ample parking space.

The standard hire charge for the main hall and kitchen are:

Weekdays	£10.00 per hour
Saturdays	£12.00 per hour
Sundays	£12.00 per hour

During the winter months (1 November to 31 March) a Winter Supplement of £1.00 per hour is added to the above rates.

Special rates apply for weddings and all day events with a range of discounts on the above rates applying to all lettings of more than three continuous hours and additional discounts are available to Etchinghill Residents and Regular Hirers.

The use of a separate Committee Room is also available.

For all bookings or enquiries please contact:
Sylvia Williams on 01303 863547



**for buses from Lyminge Post Office to
Folkestone Town Centre via Etchinghill & Cheriton High St.**

MONDAYS TO SATURDAYS except Bank Holidays

There are route 17 buses at 0705 (not Saturdays), 0749, 0912, 0939 (not Saturdays), 1004, 1104, 1204, 1304, 1404, 1504, 1614 (1619 on schooldays), 1629 (schooldays only), 1654 (schooldays only), 1719, 1819, 1919, 2113 and 2313.

There are also route 18 buses to Sandling Stn & Hythe - for times see our website or call the number below.

SUNDAYS & BANK HOLIDAYS

There are route 17 buses at 0947, 1147, 1347, 1547, 1802 and 2002.

**for buses from Lyminge (opposite Samuel Jacob) to
Canterbury City Centre via Elham, Barham & Bridge**

MONDAYS TO SATURDAYS except Bank Holidays

There are route 17 buses at 0727 (schooldays only), 0732, 0752, 0904, 0944, 1044, 1144, 1244, 1344, 1444, 1559 (Saturdays and Mondays to Fridays during school holidays only), 1614 (schooldays only) 1704, 1804, 2001 and 2201.

There are also route 18 buses to Canterbury via Stelling Minnis and Bissingham - for times see our website or call the number below.

SUNDAYS & BANK HOLIDAYS

There are route 17 buses at 0827, 1027, 1227, 1427, 1642 and 1842.

These times will operate from 8th January 2012.



timetable information **0871 200 22 33**
Calls cost 10p per minute plus network extras
www.stagecoachbus.com/eastkent

RHODES MINNIS VILLAGE HALL

Are you looking for a hall in which to hold Practice sessions, private party/function or Meeting? Rhodes Minnis Village Hall has the capacity to take parties of up to 100 and has kitchen facilities at no extra cost.

Rates:

Sun – Fri £14.00 per session. £34.00 per day
Sat - £20.00 per session. £27.00 evening session
£55.00 per full day.

Session Times:

AM session 8.30am – 12.30pm
PM session 1.30pm – 5.30pm
Evening Session 6.00pm – 11.45pm

A returnable deposit is payable in advance.
Regular users will be given a special reduced rate.

**For details contact 07849 217793
or by email: book@rmvh.org.uk**

Lyminge Village Hall

Lyminge Village Hall is one of 14 *Hallmark L2* accredited village halls in Kent. Consequently, we offer a safe, secure and well managed village hall and this accommodation:

1. **Committee Room**, suitable for up to 12
2. **Harry Storey Room**, ideal for small club activities
3. **The main hall**, great for dances and large celebrations with bar, servery and full stage

We remain a competitive local venue ideally situated off the main road with ample parking. Examples of prices for the main hall are:

Friday or Saturday evening £65.00, weekday evenings £20.00 and all day Saturday £135.00. **For full price details and room availability call our booking secretary, Sam Cunningham on 863256**

Sibton Park Cricket Pavilion Club

Having a party? Need a local venue?
Why not take advantage of Sibton Park Cricket Club's lovely pavilion?

We have a bar with club price drinks & friendly efficient staff.

There is capacity for up to 100 guests. For further information or to make a booking please

Contact Lesley Kirk, Tel: 01303 862366

EVENT PLANNER

This page is printed to give readers and organisers the opportunity of planning events without clashing with existing ones, which are already in the 'diary'. It is not intended as a means of advertising and we take no responsibility for errors or omissions. Acceptance is at the discretion of the editor. Please send your updates by email to pb@pbarnes20.plus.com or via methods outlined on Page 2. Location and name codes follow:

C&H: Coach & Horses; **ECC:** Etchinghill Cricket Club; **EVH:** Etchinghill Village Hall; **ERA:** Etchinghill Residents' Association; **ES:** Elham Square; **JC:** Jubilee Centre; **JF:** Jubilee Field; **LB:** Laing Bennett; **LL:** Library; **LMC:** Lyminge Methodist Church; **LPC:** Lyminge Parish Church; **LSH:** Lyminge School Hall; **LVH:** Lyminge Village Hall; **LW:** Lord Whisky; **NP:** Nailbourne Parlour; **NVH:** Newington Village Hall; **PC:** Postling Church; **PH:** Lord Whisky, Park Hse. **PVH:** Postling Village Hall; **RVH:** Rhodes Minnis Village Hall; **RMC:** Rhodes Minnis Church; **SNL:** See News Letter for info; **TC:** Tayne Centre.

ONE OFF or IRREGULAR EVENTS					ONE OFF or IRREGULAR EVENTS				
Date	Time	Event	Where	Tel. No.	Date	Time	Event	Where	Tel. No.
1 August	7pm	Music on Friday	LPC		13 September		Ladies Pamper Evening	LVH	862928
2 August	11am	Rett UK Charity Fun Day	Monks Horton		14 September		Garage Safari	LVH	
2 August	2.30pm	RM Summer Flower Show	RVH	863177	23 September		Etchinghill Boot Fair	ECC	07934008600
4 August	2.30pm	Launch of 'Lyminge Men Remembered'	LL		27 September	7.30pm	Snowden Colliery Choir	TC	863049
9 August		Etchinghill Boot Fair	ECC	07934008600	4 October		Quiz	EVH	
9 August	2pm	L'ge Summer Flower Show	TC	862264	5 October		Combined Harvest Festival	LPC	
16 August	10-2pm	Open Day, Lyminge Dig	TF		7 October	7.30pm	Historical Society Special Event	TC	07759260816
19 August	9am	Summer Outing, RHS Hyde Hall	TC	862264	11 October	7.30pm	Autumn Quiz	LVH	
22-25 August		Beer Festival	C&H		14 October	7.30pm	Lyminge Gardeners' AGM	TC	862264
23 August		Etchinghill Boot Fair	ECC	07934008600	21 November	9.30am	Christmas Fair	JC	269602
25 August		Pétanque/BBQ/Picnic	EVH		26-28 November		Hi-de-Hi Play	LVH	
6 September		Etchinghill Boot Fair	ECC	07934008600	6 December		St Nicholas Fayre	LVH	
13 September	7pm	Quiz Night	EVH	863599					

WEEKLY EVENTS					WEEKLY EVENTS				
Day	Time	Event	Where	Tel. No.	Day	Time	Event	Where	Tel. No.
Mon	10:00am	Open House	EVH	863394	Wed	6pm	Karate for Juniors	EVH	07554004526
Mon	10.30am	Lyminge Larks (Singing)	TC	01233 750223	Wed	7:00pm	French Conversation Grp.	KH	862972
Mon	11am	Cookery	JC	01303 269602	Wed	7:30pm	Cantores Dominae Choir	LSH	01233 840961
Mon	2:30pm	Monday Fellowship	TC	862164	Wed	7:30pm	Circuit Training	TC	07951 698 008
Mon	5.45pm	Lyminge Youth Theatre	TC	862602	Wed	8:00pm	Scottish Country Dancing	EVH	862761
Mon	6.30pm	Judo Club	LVH	862946	Thu	10:00am	RM Toddler Group	RVH	863096
Mon	7:30pm	Circuit Training	TC	07951 698 008	Thu	10:00am	Art Group – Morning	TC	211364
Tue ¹	10.00am	Baby and Toddler Group	TC	863274	Thu	11am	Shopping Trips to Local Supermarkets	JC	01303 269602
Tue	10.30am	Art Class	JC	01303 269602	Thu	2:00pm	Art Group – Afternoon	TC	862972
Tue	11.15am	Chairobics	JC	01303 269602	Thu	6.00pm	Ballroom & Salsa Dancing	EVH	07967979610
Tue	6pm	Football Training	JF	07967342226	Thu	6.45pm	Short Mat Bowls	LVH	862293
Tue	6.45pm	Short Mat Bowls	LVH	862293	Fri	9:10am	Circuit Training	TC	07951 698 008
Wed	10:15am	Mature Movers (Exercise)	TC	862873	Fri	11am	Seated Exercise	JC	01303 269602

MONTHLY EVENTS					MONTHLY EVENTS				
When	Time	Event	Where	Tel. No.	Day	Time	Event	Where	Tel. No.
1st & 3rd Mon	10:15am	Health Walk	LVH	862959	3 rd Wed	7:30pm	RM Evening Circle	RVH	862913
2nd & 4th Mon	10:15am	Health Walk	ES	862959	Last Wed	7:30pm	Quiz Night	C&H	862694
3 rd Mon	7.30pm	Etchinghill Cinema	EVH	863333	4 th Fri	7:30pm	Beetle Drive	RVH	862616
Last Mon		Parish Council Meeting	SNL		Last Wed ⁴	11am	Singing for Health	JC	862364
1 st Tues	11am	Reminiscence	JC	01303 269602	Last Fri	1.30pm	Team Quiz	JC	269602
1 st Tues ²	7:30pm	LHS Talk/Event	TC	862972	1 st Sat	10:00am	Village Market	EVH	863819
3 rd Tues	2:30pm	Etchinghill W.I.	EVH	863503	2 nd Sat	10:00am	Postling Ch. Coffee Morn.	PC	863536
3 rd Tues ³	7.30pm	Gardening Society	TC	862264	3 rd Sat	8:00am	Saturday Market	TC	862164
1 st Wed	10:30am	Lyminge Friends	LMP	862598	Last Sat	11:00am	Lyminge Poetry Group	LL	863474
2 nd Wed	10:30am	Mothers' Union	NP	862221	3 rd Sun	10.00am	Parish Walk	Richard	862015

¹ In term time only ² Except Jan, Feb, July and August ³ Except Jan, Feb, Aug ⁴ Except Aug and Dec

Out and About

Do you have any photos of local events or local groups in action, please call 01303 862699. Give your group a FREE plug!



The **Lyminge Village Hall** Summer Quiz on 28th June. The **Oddballs** won by just one point, with a score of 106 points. Congratulations! The team is seen above with their prize - an enormous cake to share and a bottle of wine each. ➡



Lyminge was delighted to welcome **The Rudes** on 6th July for their annual visit to Tayne Field. The morning rain cleared, the sun came out and we were presented with 'The Wife' based on Chaucer's classic tale of Alyson who sent Knight Roland on a quest to find out what women really want. The audience really wanted great entertainment, a humorous tale and original music - and they got them all! The ease with which the players transformed themselves into different characters and created furniture, animals and props out of (literally) nothing amazed and delighted the 100+ spectators. The players say that Lyminge is one of the high spots of their summer tour - well, for us their visit is definitely one of our village high spots! ➡



Lyminge Friends held their very first "Cream Tea Outing" on 25th June when they all met up at Lathe Barn Tea Rooms on Romney Marsh. The cream was plentiful, the teas just right and the cakes were huge! ➡

◀ **Lyminge PreSchool** held their *Picnic in the Park* on Friday 4th July. The weather was perfect for the day and everyone had a great time with all the special attractions, including a fire engine.



➡ The Lyminge Association's stand in Station Road on 12th July when over 12 people signed up to be on hand to help the Association with their projects and events. For further information please phone Adrian on 862699 to see how you could join in.

Mystery Photo



Last month's picture was the postbox at the junction between Church Road and the High Street.

Try this one!

more Out and About!

So much happens in Lyminge !



Lyminge Methodist Fellowship held a Garden Party to raise funds for Hope Romania



Lyminge Friends held their annual Garden Party on 16th July. The bunting was up, the sun was shining and the cakes were delicious !



Lyminge Gardeners first ever *Wine & Wander Evening* visiting each other gardens with a glass of wine !



Lyminge Primary School presented '*Joseph and the Amazing Technicolour Dreamcoat*' on 21st July. It was a brilliant production with fantastic costumes and enthusiastic acting and singing. Congratulations to all the children and the staff.

**DO YOU NEED HELP
IN YOUR GARDEN?**
**SEAN GODDEN CAN DO ALL THOSE JOBS THAT
TAKE UP YOUR SPARE TIME.**

WEEDING - TURF LAYING - LAWN CUTTING/EDGING
HEDGE/TREE MAINTENANCE - WASTE TIP RUNS
FENCE & DECKING PAINTING/TREATING
BRICK, PATHWAY AND WINDOW CLEANING
TEL: 07538988914
Email: sgodden@hotmail.co.uk



Local Bookkeeper

Sole Trader & Small Business Accounts
VAT, Self Assessment, Payroll, CIS
& General Administration Services

Call or e-mail:
Tel: 01303 864229 Mob: 07885 458 304
e-mail: tash@bestbookwork.co.uk
www.bestbookwork.co.uk



THE DRIVING INSTRUCTOR

ROGER DOWLE

ADI QUALIFIED
PATIENT & PROFESSIONAL TUITION
FOR MORE INFORMATION OR TO BOOK A LESSON PLEASE CALL ROGER
07870939936
INTRODUCTORY OFFER, BEGINNERS ONLY, FIRST FIVE HOURS £80!

SEATHWAITE BOARDING CATTERY LTD.



Supporting Rhodes Minnis Cat Sanctuary
GREEN LANE, RHODES MINNIS, CT4 6XU
TEL: 01303 862243 (Registered charity 262245)

ONLY CATS BOARDED, IN QUIET COUNTRY LOCATION
Individually heated chalets. Single cat £6 per day, a reduction for 2 or more cats. All cats boarded with us must have current vaccinations against cat flu & feline enteritis. All profits from the boarding cattery go to support homeless cats in the Sanctuary.

RHODES MINNIS CAT SANCTUARY

has a wide variety of cats available to caring homes.

Luke Southwell Ltd.

Fast and Friendly Electrical Contractors
Fault Finding
New Installations
Board Changes
Testing & Inspecting



For free quotation 01303 863 203 / 077 678 21552

East Kent Foot Care

Mobile Foot Health Practitioner
Jo Shapter BSc (Hons), MCFHP, MAFHP

Treating and managing common foot problems, corns, callus, verrucae, thickened nails, toe nail management, fungal problems, diabetic foot assessments etc.

Call: 07745 532075

Member of the British Association of Foot Health Professionals



D.M.B. Plastering

All aspects undertaken

Interior. Exterior. Plastering. Rendering.

Coving. Ceilings Wall. Floors

Finest quality assured. CSCS Certified.

26 years experience.

Free estimates. Reliable service. Fully insured.

Call David on 07818 607209. Stelling Minnis

P Davis + Co

General Builders and Roofing Specialist

All work undertaken

Call for free estimate

Tel: 01303 863049 or 0784 6769643

Personal Computing

For straightforward I.T. advice, solutions and training

Contact:

Steve Ashman

862869

sra@ashman-consulting.co.uk

Lyminge
Country
Store
Barn

Small Animal Feed Suppliers •
Wild & Domestic Bird Seed & Feeders •
Equine Food & Supplements •
Light Bulbs & Batteries •
Poultry & Farming •
Calor Gas, Logs & Coal •
Pest Control •
Plus more...

For more information contact us:
01303 720034



Lyminge
Country
Store

Kent Products
for
Kent People

• Free Range Meat
• Free Range Eggs
• Dairy Produce
• Fruit & Veg
• Breads
• Pastries
• Tacklements
• Beer, Cider & Wine

www.lymingecountrystore.co.uk
info@lymingecountrystore.co.uk

Wilco Plumbing & Heating

Central Heating Installations & Repairs

Gas & Oil Boiler repairs & replacements

5 Year Guarantee on Worcester Bosch Boilers.

Local Experienced Engineer, Emergency plumbing 24/7 call out

Registered with the Institute of Plumbing

Gas Safe Registered-OFTEC Registered

KCC Trading Standards Approved

01303 862173 07860 452640

paul@wilcoplumbing.co.uk

www.wilcoplumbing.co.uk

TOBY'S TREE SURGERY

Thinning – Reducing – Maintenance – Felling

ALL TREE WORK, BOTH PRIVATE AND COMMERCIAL,
UNDERTAKEN BY OUR NPTC TRAINED OPERATIVES

Professional Friendly Service

FREE ESTIMATES - FULLY INSURED

Contact Toby Griggs: **07854 098 395**

or (01303) 863642



D. SCRIVENS

PLUMBING & HEATING

Oil Fired Boiler Installation,

Commissioning, Service and Maintenance.

Unvented Hot Water Systems – Solar Water Heating

Central Heating – Water Softeners – Bathrooms – Showers – En suites

Approved 'Aqualisa' Installer

WATER INDUSTRY 'APPROVED PLUMBER'

FULLY INSURED

Mobile: 07810 897076

Email: **scrivensplumbing@aol.com**



City &
Guilds
Qualified



Registered
Business

K & M LEWSEY LTD

PLUMBING & HEATING ENGINEERS

ESTABLISHED 1969

REGISTERED PLUMBER

GAS ACOP APPROVED ENGINEERS

TELEPHONE: 01303 264535

MANNED OFFICE,
DAYTIME MONDAY TO FRIDAY



Total garden care for all your needs

TIM MILLETT

Grass Maintenance, General Gardening, Small & Medium

Size Tree Work, Stump Grinding and Wood chipping

Fencing Repairs & New Installations

Turfing, Hard & Soft Landscaping

Free Estimates - Fully Insured

01303 863676

Mob: 07752 880583

Email: **info@tmhorticulture.co.uk**

North Downs Tree Surgery

your local tree surgery specialist

All aspects of tree work undertaken
including the removal of dangerous trees

Felling : Thinning : Reshaping : Crown Reductions : Pollarding : Pruning
Hedge Cutting : Landscaping Service : Logs available

NPTC QUALIFIED – FULLY INSURED

Free advice and quotes

Call Will on: **01227 709 304** or Mobile: **079300 10622**



N.P.C.

Domestic Appliance Services

*Service and repair of washing machines, tumble driers,
dishwashers, cleaners and small electrical work. For a
prompt and friendly service*

Call Neil Collard **01303 892234** or **07798716044**
or **www.npcdomesticapplianceservices.co.uk**

Auto Economy Centre

**Fully equipped Mechanical Repair & Service Centre
with the latest diagnostic equipment.**

MOTs £39.95

01303 863656

Orchard Garage, Canterbury Rd, Etchinghill

www.autoeconomycentre.com

Ralph Allard Chimney Sweep

Brush and Vacuum. All chimneys, boilers and stoves swept.
Certificates issued.

HETAS and NACS registered, fully insured.

Member of National Association of Chimney Sweeps

Tel: 01303 844465 or 07813716654



REGISTERED OSTEOPATHS & MEDICAL ACUPUNCTURIST

Adam Price B.Sc Hons (Ost) Katie Price B.Sc Hons (Ost)

The Clinic 01303 863359 or mob: 07980 897382

- Treatment of lower back pain, both acute and chronic
 - Treatment of tension/cervical type headaches both acute & chronic
 - Treatment of various stiff & painful arthritic conditions
 - Treatment of sports injuries, both soft tissue & skeletal
 - Deep tissue back, neck & shoulder massage for symptomatic relief
- The cost of your treatment may be recoverable from your insurers.
Please check

THE CLINIC

Garden Suite
Pendragon House
4 Station Road
Lyminge
Kent CT18 8HP
01303 863359

info@theclinic-lyminge.co.uk
www.theclinic-lyminge.co.uk



Sunhouse Electrical

Your local reliable Electrician
Part P Registered & ELECSA Approved
On Electrical Safety Register & Fully Insured
For a free quotation call James on
01303 766333

www.sunhouse-electrical.com

GOSBEE CONSTRUCTION

Over 30 years experience. Jacksons Expert Installer
Reliable. Friendly. Professional

Property Maintenance
Hedge & Tree Cutting
Tarmacadam Works
Grass Cutting

Building Work
Garden Design
Landscaping
Fencing & Gates

Ponds
Patios
Driveways

Call us for a free, no obligation quote : 07974 835511 or 01303 863337
Visit our website: gosbeeconstruction.co.uk
E-mail us: info@gosbeeconstruction.co.uk

S R Accounting and Business Solutions LLP

"Working hand in hand with your business"

Denise Roberts, ACIS, ACMA & David Sayle

Qualified accountants with a combined experience of over 50 years.

We offer business start-up advice, business planning, monthly & annual accounts,

VAT & tax submissions, full payroll service, company secretarial service.

E-mail: droberts@sr-accounts.co.uk

Telephone: 01303 862559

Mobile: 0751 1097707 Web: www.sr-accounts.co.uk

MANOR VETERINARY CLINIC



We care for
them all great
and small

Lyminge Clinic: Methodist Church Hall - Mon, Wed & Fri pm
Tel: 01303 273203
www.manorveterinaryclinic.co.uk

STERRY'S OF HYTHE

Independent Funeral Director

Always here for you 24 hour service

Home visits on request

Choice of pre-paid funeral plans

01303 264400

41 High St, Hythe (op Lloyds Bank)

ANIMAL CHIROPRACTOR

Treating **HORSES, DOGS & CATS**



Back pain, neck pain, arthritis, stiffness & much more

Human clinics in Cheriton & Westgate

www.backtostraight.com

info@backtostraight.com

Tel: Will Wright 863460 or 07905 031850

Red Dragon IT Ltd

'Computer Specialists'

We offer the 'One Stop Shop' for all your computer requirements.

Our services include repairs, bespoke PCs, maintenance, peripherals, consumables and web design.

www.rdit.co.uk 01303 723456

LYMINGE FOOD AND WINE

01303 862225



We are here to serve you

Mon. – Sun. 7:00am to 9:00pm

including Bank Holidays

National Lottery Here



Jubilee Farm

Organic Beef, Lamb, Mutton and Pork

Hay, Haylage and Straw available. Free local delivery

M&T Britton Farms, Jubilee Farm, Rhodes Minnis

Tel: 01303 862317 email: cavalryfarm@fwi.co.uk

COUNTRY FARE

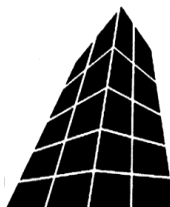
CATERING SERVICES

Country Weddings, Christenings and All Family Gatherings, Corporate Lunches, Seasonal Parties & Celebration Cakes

Contact: Sally Burr Telephone: 01303 863642

Mobile: 07814 610995

Email: sallycountryfare@gmail.com



Filehurst Associates

Archive, Warehousing, Logistics, Business & Household Storage.

Domestic & Commercial removals and storage.

01303 239990 www.filehurst.co.uk



FRESHLOOK GARDENS

Regular lawn mowing service.
Garden design. Hard and soft landscaping.
General garden work, fencing and decking. Turfing
hedge cutting, small and medium tree work.
Water features, ponds and patios.

For free quotation ring Geoffrey Hogben

01303 844 680 / 07866 091633

sales@freshlookgardens.info

www.freshlookgardens.info

Established since 1990. Fully insured.

Browns

Sales & lettings
7 days a week



Over 40 years of Kent
village and country property

Elham 01303 840422 | Hawkinge 01303 892000
www.brownscountryproperty.co.uk

LYMINGE NEWSAGENTS

11-13 STATION ROAD, LYMINGE CT18 8HS
01303862566

**POST OFFICE, 'OFF LICENCE' and
CONVENIENCE STORE**

Dry Cleaning and Laundry, can deliver Papers

NEW OPENING HOURS

7AM TO 10PM EVERY DAY



Local Tradesman

J Tappenden

Established 36 years

Painter/Decorator/Builder

Tel 01303 862467

Mob: 077755 78008

Jolly Legs Bouncy Castles

Treat the kids this summer for as
little as £45.00

Phone Edd or Lyn:

01303 840725 / 07805018293

www.jollylegs.co.uk



All castles fully insured and PiPA tested

Jackson Plumbing

Property Maintenance

Complete bathrooms and tiling

No job too small. Special rates for OAP's.

Telephone: home/evening 01303 270691

or daytime 07773 089398 or 07864 929826

(please note new mobile numbers)

BEAVER BUILDERS

Jon Daughters

Conversions

Driveways

Plastering

Roofing

Patios

Decorating

Carpentry

Drains

Plumbing

FREE ESTIMATES

Tel: 01303 863371

SIX MILE GARAGE LTD

Stone Street, Stelling Minnis, Canterbury, Kent CT4 6DN

- Car and light commercial servicing
- Class 4 and 7 mots and repairs
- Car and light commercial accident repair centre (insurance approved)
- Diagnostics bay with latest equipment
- Tyre bay with four wheel alignment and balancing
- Air conditioning servicing

Tel. 01227 709214 or 01227 709491, Fax 01227 709331

E-mail: office@sixmilegarage.co.uk

Trevor Law

Electrical Installations

Serving Elham Valley

for 30 years

Part P Registered

Telephone 01303 840950

J. V. Services

Mobile Mechanic

Servicing and Repairs:

- Garden Machinery
- Ride on Mowers
- Trailers & Horseboxes
- Quad Bikes
- Classic Cars

(Free collection and delivery)

Serve/Repair/Full Restoration:

- Compact Tractors
- Vintage Tractors
- Classic Tractors

Mobile: 078 0300 3047

Home: 01303 862963

john@jvserviceskent.com

DILTON

MINI SKIP HIRE

Ballast, Hardcore, Sand and Topsoil Supplied

REGISTERED WASTE CARRIER

Telephone: 812448 or

Mobile 07799 433754

M. J. Athow

BUILDER & DECORATOR, EST. 1965

GENERAL MAINTENANCE

Qualified and Insured. Free estimates

Telephone: **862616** Mobile: **07976 306665**

Email: m.j.athow@live.co.uk

Website: <http://mjathow.spaces.live.com>

AIR LINK CARS

(You pack up, we pick up)

Airport, Seaport & Long Distance Travel Specialists.

The Family Run Business where service really counts

Estate cars and People Carriers

Fixed price 24hrs a day. No extras.

Written Confirmation of booking.

For the Easy Airport Link, Think Air link!

01303 862704 - 07753 760897



WILL WOODBRIDGE

Carpenter/small works builder

With years of experience

Telephone 01303 863062

Picture Framing

All types of framing undertaken, including tapestries, cross stitch, medals & badges etc.

Can collect and deliver.

Phone Lyminge (01303) 863449



Laing Bennett
INDEPENDENT ESTATE & LETTING AGENTS

With our excellent local knowledge, service and two local offices we will get you moving

The Estate Office 8 Station Road Lyminge Kent CT18 8HP
T 01303 863393 E lyminge@laingbennett.co.uk

134 High Street Hythe Kent CT21 5LB
T 01303 264846 E hythe@laingbennett.co.uk

www.laingbennett.co.uk



SOLD
01303 863393

Claire's Country Kitchen



Join us and enjoy some of our delicious home-baked items, Breakfasts, Light Lunches, and Snacks with a selection of Teas or Coffees.

Open Tuesday – Saturday, 7.30am to 4.00pm

Canterbury Road, Lyminge, Kent CT18 8HU

01303 864222

SCRUBBERS - Est. 1988

THE HOME AND COMMERCIAL CLEANERS

One off, regular or moving day 'Blitz'

Oven cleaning – Ironing

Carpet cleaning and more...

For a friendly and reliable service

Free Estimates Tel: 01303487019 or 07834128671

Dennis Huntley

Installer of wood and multi-fuel stoves & fireplaces
Heating engineer, solid fuel servicing and chimney sweep

01303 862343

07850 784365



R. B. BUILDING SERVICES

General Maintenance, Painting, Carpentry, Plumbing, Upvc Fascias and Guttering.

Fully Insured

For a free quote please ring Roy Bowling on

Home Tel: 01303 863267 – Mobile 07947 132319

HYPNOTHERAPIST

For help with anxiety, weight loss, smoking cessation, stress, fears, self esteem, exam nerves, relationship issues and much more. **Julie** is a member of British Association of Therapeutic Hypnotherapists, with much experience and proven results. To discuss in confidence and book an appointment contact her on **07773502399**.

HOLDEN PLASTERING

All aspects of Plastering

Smooth-over Artex - a speciality.

Coving, Tiling and Plumbing

Phone JAMES for free estimate or advice on:

Tel: 01303 770449

Mobile: 07773 262970