

THE LYMINGE NEWSLETTER

For the communities of LYMINGE, ETCHINGHILL, RHODES MINNIS and POSTLING

<http://www.lyminge.org.uk/>

October 2014

Produced by
THE LYMINGE ASSOCIATION

Lyminge Association News

Our next event is our **A.G.M.** which is to be held at The Coach & Horses in the dining room on Monday 20th October at 7.00p.m. Come along and give your suggestions as to what you think the Association could do for our villages. We hope also to have an exhibition of the entries for the Calendar Photographic Competition.

Thank You to Claire Wilcoxon of Claire's Country Kitchen for acting as the Booking Office for the Autumn Garage Safari. The weather was kind to us this time and we hope that everyone was pleased with their sales on the day

Thank you also to all the volunteers who came along and helped clear the Nailbourne on 20th September - see the Parish Council's pages for photograph.

Keep Lyminge Tidy !

We will be working with the Parish Council with a big tidy up on 11th October. Please see the Parish Council's pages for full information

CHRISTMAS LIGHTS switch-on

This will take place in November, complete with mulled wine and mince pies ~ watch out for full details next month.

If you live along Canterbury Road or Station Road and you would like to help make the village look even better this Christmas and would like to have a special bracket for a Christmas tree and a set of lights to go on it, please call Adrian on 862699. The bracket, tree and lights are all provided free !



LYMINGE FIREWORK DISPLAY

SATURDAY 8th November

JUBILEE FIELD ~ NEXT TO THE VILLAGE HALL

GATES OPEN 6.00pm

Organised by the Lyminge Village Hall Management Committee.

Charity No 281845

LYMINGE PARISH CHURCH SERVICES & ACTIVITIES

Church Website: www.lymingechurch.co.uk

E-mail: office@lymingechurch.co.uk

Wed 1 st Oct	7.00pm	Holy Communion (<i>short said 10-15 mins</i>)
	7.30pm	Open House Bible Study and Discussion (<i>coffee available from 7.20pm</i>)
Sun 5 th Oct	8.00am	Holy Communion (CW order 2)
	11.00am	Harvest Festival – a joint service with the Methodists followed by lunch in the church
Wed 8 th Oct	7.00pm	Holy Communion (<i>short said 10-15 mins</i>)
	7.30pm	Open House Bible Study and Discussion (<i>coffee available from 7.20pm</i>)
Sun 12 th Oct	8.00am	Holy Communion (CW order 2)
	11.00am	Sung Eucharist followed by refreshments
Wed 15 th Oct	7.00pm	Holy Communion (<i>short said 10-15 mins</i>)
	7.30pm	Open House Bible Study and Discussion (<i>coffee available from 7.20pm</i>)
Sun 19 th Oct	11.00am	Family Communion with Children's Corner followed by refreshments
	6.00pm	Evensong
Wed 22 nd Oct	7.00pm	Holy Communion (<i>short said 10-15 mins</i>)
	7.30pm	Open House Bible Study and Discussion (<i>coffee available from 7.20pm</i>)
Sun 26 th Oct	8.00am	Holy Communion (CW order 2)
	11.00am	Sung Eucharist followed by refreshments
	3.30pm to 5.30pm	Messy Church (School Term Time Only)
<i>A time for parents, grandparents, carers & children to have fun and explore faith.</i>		
It is called Messy Church because you will get messy!		
<i>You will have a choice of being involved in 3-4 crafts, take part in a short time of celebration and finish with enjoying food together</i>		
Wed 29 th Oct	7.00pm	Holy Communion (<i>short said 10-15 mins</i>)
	7.30pm	Open House Bible Study and Discussion (<i>coffee available from 7.20pm</i>)

ACTIVITIES THIS MONTH

Coffee Morning in Wentworth Close Lounge

Tuesday 14th October at 10.00am

This event will continue only if the numbers attending are viable

Please contact Lynne on 863010 or Lorraine on 863216

If you are interested in attending and/or need transport

Mothers Union

The next meeting will be the AGM on Wednesday 8th October at 10.30am in the lounge at Nailbourne Court

Contact – Sue Rawlings 862221

Prayer Shawl Ministry Group

The next meeting will be on Wed 15th October at 2.30pm

This group meets in the lounge at Nailbourne Court

to knit prayer shawls & pray for our world.

Tea and coffee are provided

Contact Madelaine Lewis 863582

Ethelburga Luncheon Club

Thurs 16th October at 12.00 noon

at the Coach and Horses Public House

Everyone is welcome and transport can be arranged,

Please contact Lynne Lane – 863010

PADDLESWORTH PARISH CHURCH SERVICES

Sun 5 th Oct		NO SERVICE
Sun 12 th Oct	9.30am	Holy Communion (CW Order 1)
Sun 19 th Oct		No Services

LYMINGE METHODIST CHURCH

Visitors are very welcome to join us at our weekly service at **11am** and invited to share fellowship afterwards with a cup of coffee/tea.

5 th October	Harvest Festival at Parish Church
	Preacher: Rev. Alan Hewitt
12 th October	Mrs Barbara Lunn
19 th October	Rev Sam Funnell (incl. Holy Communion)
26 th October	Mrs Joy Brumwell
2 nd November	Mrs Val Redding

RHODES MINNIS CHURCH

5 th October	12.45pm in the Village Hall - Harvest celebrations with a lunch. Lunch must be pre-booked with Daphne on 862865
12 th October	Mr. Terry Preston
19 th October	Rev. Derek Hancock (includes Holy Communion)
26 th October	Mrs. Joy Brumwell
2 nd November	Rev. Alan Hewitt

This small Chapel in beautiful countryside holds a weekly Sunday Service normally at 9.30am followed by coffee and biscuits. A warm welcome is extended to any visitors.

POSTLING CHURCH SERVICES

5 th October	6.00pm	Harvest Festival
12 th October	9.30am.	Family Service
19 th October	8.00am	Holy Communion
26 th October	9.30am	Family Communion

L.E.T. (Lyminge Ecumenical Team)

Lyminge Churches working together

On 9th November at 10.45am there will be an Act of Remembrance at the War Memorial in the Parish Church Churchyard followed by a combined service at the Methodist Church.

Everyone is welcome.

Lyminge Newsletter

Terms & Conditions. Copy deadline is 18th October

Please email your copy in word.doc format to the editor (pb@pbarnes20.plus.com). Your payment must be received before your article or advert can appear in the Newsletter. Please leave your payment in a sealed envelope at the Lyminge Post Office or at the Lyminge Library. **Your name, organisation and telephone number must be included on the envelope along with your advertisement or a copy.**

Business adverts cost £9.50 per month or £95.00 per year. Personal and charity adverts and articles from £3 per month, or £30.00 per year. The annual rate offers 12 entries for the price of 10. Please make cheques payable to 'The Lyminge Association'

If you do not have email, a typed paper-copy can be left with the payment. **Further details from Peter (editor) on 01303863737.**

Spicy Touch

Indian Take-away

15 Station Road – Lyminge - CT18 8HS

Contact 01303 86 4297

Order online www.spicy-touch.co.uk

Opening Times

Monday	Closed
Tuesday	5-10.30pm
Wednesday	5-10.30pm
Thursday	5-10.30pm
Friday	5-10.30pm
Saturday	5-10.30pm
Sunday	5-9.30pm

Open Bank Holidays

**Restaurant
Coming soon
November 2014**



Lyminge Friends

In September we heard from Ian Porter about the aftermath of the Titanic sinking - we were so shocked by the social attitudes prevailing at the time - unbelievable! A week later we went to the seaside for a Cream Tea at the Walpole Bay Hotel in Margate. This is a great place for a visit as the Hotel is famous for its Living Museum and we all remember how things used to be!

October is a busy month, starting with a talk on Wed 1st from Dennis Williams entitled From Russia with Love, then on Friday 10th we are off to the Gurkha Palace for our Curry Night - always a good night - and on Wed 22nd it's destination Westwood Cross for some retail therapy and a carvery lunch. This enjoying ourselves is really hard work but oh, so, necessary!

Meeting are 10.30 - 12.30 in the Rigden Room of the Tayne Centre. We don't have membership fees, only the monthly entry fee, currently £2.00, which includes refreshments.

We are a friendly social group and always welcome new members. If you'd like to talk to one of us first, please call 863500 or 862044

After the summer break Barbara Syrett, the President, welcomed members and also David Melrose and his sister, Karen. The meeting was held in memory of Daphne Melrose, a most popular member who is sadly missed by us all. A crab apple tree has been planted close to the village hall in her memory and a plaque was placed by the tree by her son and daughter.

Birthday posies were presented to Joan White, Mavis Hodson and Doreen Browne and June Manton pointed out items of interest from the East Kent News.

In July, several members enjoyed a splendid afternoon tea at Lower Hardres, the guest speaker was Sandra Howard and she told us how she became a top model in the sixties and later becoming a successful writer. A big thank-you was given to Gill le Cras for the scrumptious cream tea held at her home in August which was enjoyed by us all.

Our speaker, Sheila Boyd, spoke about "Queen Victoria's dreadful uncles" which opened our eyes about their chequered past. The competition winner for a piece of Victoriana was Chris Marshall and the flower competition winner was Daphne Andrews. Tea hostesses were Mary Hickmott, Chris Marshall and Gill Le Cras who served an excellent tea.

Next meeting will be our 92nd birthday meeting on Tuesday, 21st October at 2.30pm when Steve and Pauline Erickson will speak about music for all occasions. The competition will be for a musical verse. For any further information, please contact Barbara Svrett on 01303 265229 or Rita Warner on 863503

theWI
INSPIRING WOMEN

We owe a very big **Thank You** to the **Volunteers** for the Clients' Summer Party where 60 people enjoyed an afternoon of eating, dancing and being merry!

We would also like to say a big **Thank You** to **Gillian Heywood** who has succeeded in winning a grant to fund the monthly Singing for Health sessions, not just for now but for the next three years! The sessions are 11am on the last Wednesday, **come and join us! This month on 22nd October.**

Have you popped in to our Café recently? We now serve bacon rolls on weekday mornings, between 8.30 and 11am, at £1.00 each. Homemade scones and cakes are available daily at 30p each and we also have spaces available at lunchtime so why not come and try one of our delicious, freshly home-cooked meals?

We have a variety of rooms available for hire, with use of the kitchens if required. Well-priced, we offer good value in a warm, friendly and welcoming environment.

Are you at a loss to understand your laptop, iPad or tablet? We can help if you come to one of our IT training sessions on Thursday mornings. *Bring your own computer.* **Booking is essential** for either a one hour group session or a one to one session. Contact Matt or Susan Foster.

If you need help getting to do your weekly shop you could join us on our shopping trips to local supermarkets on Thursdays at 11am (£3.50 return trip).

Advance Notice: the Centre's Christmas Fayre will be on Friday 21st November and this is the big fundraiser for Lyminge Clients' Christmas Party. Put the date in your diary - more details next month.

Thank you for all the items donated for our Charity Shop. We are always happy to receive donations of anything bar electrical items and look forward to seeing you again soon. The **Charity Shop** and **Café** are open every weekday and Saturday mornings.

Have you been busy growing this year? Now that the season of mellow fruitfulness is upon us, if you have a glut of produce you can't use, we would love to receive it.

Our Hairdressing Salon is open on Monday and Friday. If you are interested in hiring it on other days please contact Matt or Cleo.

Our Chiropody Service is on Wednesday mornings. A 15 minute appointment is £11 or 30 minutes for £17. The Treatment room is available to hire on other days

Our next Clients' Holiday is from 8th to 12th April 2015, to Sandown on the Isle of Wight. There will be visits to Osbourne House, Waltzing Waters and Godshill as well as evening entertainment. Dinner Bed and Breakfast at hotel, excursions and lunches and teas/coffees detailed in itinerary all for £319 single, £299 twin/double, extra £20 per person for premium room. Please contact the Centre as soon as possible as places are selling fast. The coach will depart from, and return to, the Lyminge centre.

The **Communion Service** is at 11am on the **first Thursday**. Support with transport is available.

Call in for our new **Activities leaflet** that has a timetable of all our activities...

For more information about any of our activities or services please call **01303 269602** and ask for **Matthew** or **Sue** or why not just pop in and see us

LYMINGE HISTORICAL SOCIETY

Tuesday, 4th November 2014,
7.30pm

THE TAYNE CENTRE

An ILLUSTRATED TALK by
Capt. P. White

The History of Dover Harbour

New members and visitors are welcome.

Refreshments will be served.

Lyminge Historical Society Mobile Tel. No.
07759 260816

Website: www.lymingehistoricalsociety.co.uk

Rhodes Minnis Village Hall AGM

Wednesday 22nd October
7.30pm at the Village Hall

Everyone who uses the hall or has an interest in what happens in the hall is very welcome to attend this meeting. You will all be most welcome.
Tea/coffee and biscuits will also be served

MUSIC ON A FRIDAY

FREE mulled wine, mince pies and entrance - your winter warm up with a tinge of Christmas.

Listen to the beautiful voice of **Rebecca Alderton**, the Rat Pack style of **Ben Lock**, the wonderful sound of **Lyminge Hand Bell Ringers**, the laid back sounds of **JUST US** and perhaps more....

Join us at **St Mary's and Ethelburga Church Lyminge** on **28th November** at 7.30 pm

..... has been running for over two years

"Who's Who in ..." section of the newsletter has been running since April 2012, during which we have received contributions from about 30 voluntary and not-for-profit organisations highlighting their own particular strengths as well as the mutual support they offer to their members. They have included:

*Lyminge Association, Lyminge Historical Society, Elham Valley & Wye Lions Club
Lyminge Friends, Parish Walks, Lyminge Dig, Lyminge Parish Council, AGE UK Hythe &
Lyminge, Christmas Day Lunch Club, The Lyminge Art Groups, Cantores Dominicae, Lyminge
Guides, Lyminge Village Hall, Royal British Legion Elham Valley Branch, Lyminge Handbell
Ringers, Lyminge Larks, Lyminge Parish Church PCC, Lyminge Village Hall Committee New
Members, 1st Lyminge Scout Group, Lyminge Library, The Etchinghill Residents' Association,
Rhodes Minnis Village Hall Committee, Lyminge Bowls Club, Lyminge Bridge Club, Lyminge
Pre-School, Ethelburga Quilters, Rhodes Minnis Evening Circle, KE (Kent East) Links Senior
Section, Lyminge Judo.*

The diversity of the sections reflects the dynamic versatility of our villages, which in turn produces an energetic and creative community. If you missed one of these articles or wish to make contact with them, then contact details are still available via the electronic version of the newsletter on www.lyminge.org.uk/newsletter/ or via the local PC web site www.lymingepc.kentparishes.gov.uk, looking under local organisations and clubs.

Should there be any other voluntary or not-for-profit organisations that would like to use this free opportunity to promote their sections, then please contact me, the editor, on 01303 863737 or email pb@pbarnes20.plus.com in the coming month.

Rhodes Minnis Evening Circle

Pat Barnes was the winner of the competition in August when we enjoyed Eileen Morgan's "Gentle exercises" to music. The evening turned out to be quite lively causing much laughter and breathlessness!

On the 17th September Don Wilkes showed us some beautiful picture on screen of Butterflies & Orchids found in Kent. He described their colour and structure and where to look for them locally. The winner of the competition was Pearl, with Marion 2nd, Daphne 3rd and Connie 4th. On the 15th October we look forward to hearing Lyminge Hand Bells with Ro Edmund. We meet at Rhodes Minnis Village Hall at 7.30pm and visitors are very welcome to join us. For further information contact Jacqui (862044) or Marion (862913)



Lyminge Dramatic Society

Tickets for Hi-de-Hi go on sale on November 1st! They are available at Laing Bennett in Canterbury Road, Lyminge (telephone: 01303 863393) or online from nodaboxoffice.co.uk. The show starts at 7.45 in Lyminge Village Hall and runs from November 26th to November 29th inclusive. It promises to be a brilliant show with Welsh Valley's Yellowcoat Gladys pursuing Cambridge academic Jeffrey, the Entertainment's Manager. Much confusion, intrigue and hilarity ensues! Book early to avoid disappointment.

Do you have 5 minutes to sit down with a coffee and browse on line? We have a brand new website courtesy of our fantastic website wizard David Vale. He has worked tirelessly to make the website vibrant, informative and easy to navigate. Visit our wonderful site at www.lymingedramaticsociety.co.uk and find out about the society both past and present.

Lyminge Youth Theatre has a delayed start date of 13th October 2014, our first session back will be Horror Stage Make up. We are currently looking for adults to assist us with running our group on either a weekly or ad hoc basis. No previous teaching or drama experience required, just plenty of energy and a commitment to attend when agreed to. Please ring Catherine on 862602 to discuss.

Lyminge Handbell Ringers



Lyminge has its very own Hand Bell group who enjoy playing a wide range of music throughout the year. Although we play for fun we also love to perform at local celebrations, fetes and family parties. You can come and hear us play before booking if you wish to select your own choice of music. We have an increasingly wide selection of music to choose from. All we need at the venue is a large table for our bells and music, room for up to 11 players and a minimum donation of £40 for our charity, the Nepali Children's Trust. A small contribution to travelling costs is also much appreciated for bookings more than 5 miles from Lyminge. Weekends and evenings only please and plenty of advance notice is helpful. Want more info or make a booking? Simply call **Ro Edmond on 863201** or email **welldorm@aol.com**

Lyminge Weather Statistics – August 2014

With thanks to Mr D. Godden for these weather statistics and notes.

	Temperature (°C)	Air Pressure (hPa)	Wind Speed (mph)	Total Monthly Rainfall
Maximum	28.1 (08/08/14)	1010 (15/08/14)	42.0 E (10/08/14)	197.7 mm (7.75 in)
Minimum	5.7 (20/08/14)	989 (01008/14)	Highest Daily Rainfall	51.00 mm (2.01in) (28/08/14)
Another warm month, with some cold nights in the second half of the month. The heavy day rainfall came in just two days.				41.00mm (1.16in) 29/08/14

Etchinghill Update October 2014

ETCHINGHILL Village Market

The winner of the September Etchinghill Village Market Raffle Prize was Peggy Bowling, who, will be having a preserves stall at forthcoming Village Markets. The next village market will be held on Saturday morning October 4th from 10 to 12.30.

Open House is open to all on Monday mornings from 10 to 12 at Etchinghill Village Hall. Come along and join in with a cup of coffee and a chat.

Open House Diary: Monday 20th October 10.00 a.m. Sylvia will entertain us with another quiz.

Cinema Club. The next showing from the ERA cinema club will be held on Monday October 20th in Etchinghill Village Hall 7.15 for 7.30 pm. The film will be: "Captain Phillips" a thriller Starring Tom Hanks and Catherine Keener.

ERA Fun Quiz – to be held in Etchinghill Village hall on Saturday 4th October at 7.30pm. (Doors will be open from 7 pm.) Please book your table with Geraldine on 01303 863164 or email gpmccombe49@gmail.com Bring your own drinks and nibbles.

Date for your diary

Big Fat Christmas Quiz

Saturday 6th December 7pm
Etchinghill Village Hall

£3 per person, includes crackers

Tables of 6 (maximum)

Bring your own refreshments

Please book early

(full house last year)

Phone Sylvia on 01303 863647

All proceeds to the maintenance of the hall.

For further information phone John 01303 863819.

TEMPORARY GP RECEPTIONIST

Minimum 16 hours per week, which are to be discussed and confirmed.

To apply, please send CV with covering letter to skcccg.churchroad1@nhs.net or by hand to the surgery at the following address:

The Surgery, Church Road, Lyminge, CT18 8HY



Saturday 1 November
7.00 for 7.30pm

Quiz at the Coach & Horses

Teams of up to 6

£5 each or £9 each with a meal

Phone 07971 722 401 or 863049

Tayne Centre redevelopment
fundraising event

Park House Sanctuary Boarding Kennels & Cattery

Park House, Stelling Minnis CT4 6AN

Brick-Built Heated Kennels Daily Walks Reasonable Rates

All dogs must be fully inoculated
Heated Cat Chalets Quiet Area
Inspection Invited. To book or for further information, call us on
01303 862622

or email lord.whisky@btinternet.com
www.lordwhisky.co.uk

New Season's Hay

Traditional small bales
Best quality – barn stored
£3.50 each

FREE local delivery for 10+ bales

**Call Richard: 01303 840733
or 07970 804466**



Grimsacre Farm, Elham
www.grimsacrefarm.co.uk



Hythe Aqua Swimming Club is expanding its nationally accredited learn-to-swim programme and now has vacancies in its lessons that are held on Tuesday & Thursday evenings at Hythe Pool.

To book your place

Tel: 01303 862353 or checkout our website:
www.hytheaqua.org.uk

ROUNDWOOD HALL PAY & PLAY GOLF CLUB

Behind the line of conifer hedges on Stone Street (B2068) you will find a friendly & welcoming short golf course.

9 holes – £8.00 18 holes – £12.00
£2 more at Weekends & B/H

Stone Street, Lyminge
Folkestone, CT18 8DJ
01303 862260



New 7 day ticket
only £35.00

FRIENDLY RELAXED AFFORDABLE
www.roundwoodhall.co.uk

Coach & Horses



Sunday Carvery 12-4pm - £8.95

Senior Citizens Lunch

Mon-Sat – £6.95pp 2 courses

Friday Food Theme Nights (6-9pm):

3rd October - Mexican

10th October - Italian

17th October - Indian

24th October – Polish

28th October - Pub Quiz - 7.30pm start

31st October - Halloween Party. Live Music
provided by SAMMY LOU from 9pm

Bookings and Contact: 01303 862694

Rhodes Minnis Village Hall

Beetle Drive

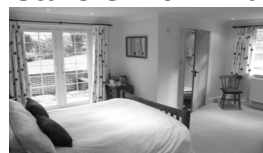
**Friday 24th October
at 7.30pm**

Adults £2 – Children 50p

Come and enjoy an old fashioned fun evening.
Newcomers welcome

**Teas, coffee, juice and
biscuits provided. There will also be a raffle**

Bridge Cottage Bed & Breakfast 4 Stars Silver Award



Luxury accommodation in a tranquil setting
Chris & Alison, Shuttlesfield Lane, Ottinge
01303 862933
www.bridgecottagesimplybandb.co.uk



For Sale



Mixed Seasoned Logs Barn Stored

Large Truck Load - Free delivery

Still Only £70 per truck load

Call 01227 709562 or 07772698899 to
book delivery

Tree surgery/stump grinding undertaken



RHODES MINNIS
CAT SANCTUARY

Halloween Quiz Night

Friday 31st October

Rhodes Minnis Village Hall

7pm Start

£10 per person*

Homemade Stew, Pumpkin Pie and refreshments available. Fancy Dress encouraged, with prize for best costume!!

*all proceeds go directly to the Cat Sanctuary

Piano Lessons

40 years' piano teaching experience

Currently accepting new pupils from beginner to diploma standard. Theory to Grade VIII

Recreational pupils welcome

Evening and some daytime slots available

Pianos on rent-to-buy basis from £50 per month

Kevin Bull BA (Hons.), Dip. Mus., A.L.C.M.

Tel 01303 241199 Email: kevin@bullmusic.com

Emma's Pet Sitting & Dog Walking Service

Our pets are part of the family and love their home comforts and routine so I offer a pet sitting service. If you decide to take a break and go on holiday or just have a day out, I can pet sit or call in to feed, walk or simply check on your animals and spend time with them while you are away. I have over 15 years experience with a variety of animals that I have cared for and own myself including cats, dogs, horses, chickens and many more and thoroughly enjoy my job.

Very reasonable rates. Please call

Emma on 07885986223 or 01303 863030



PRIVATE TUITION

Are you looking for some support with your *homework or lessons*?

- ☐ 15 years experience
- ☐ Up to G.C.S.E. in Maths
- ☐ Up to A Level in Chemistry, Physics and French

Qualifications:

- ☐ Master of Science (Hons)
- ☐ Post graduate certificate in secondary education

Contact me on : chrperrier@hotmail.fr (Elham)

DEVOLUTION IN LYMINGE??

In December this year a number of the committee members of the Lyminge Historical Society will be standing down. As with all local societies finding people willing to sit on committees is difficult. However, we know that there is a lot of knowledge, keenness and willingness within the parish to help keep the Society alive and active.

In an attempt to resolve the problem we are considering the re-organisation of the way the Society is run. We propose that we look to the membership for groups to help investigate specific aspects of our local history.

For example, following the success of the archaeological digs we think there is a need for an Archaeological Group. What the group does or does not do will be up to that group. The committee will ask that the group keep the Society informed on what they are doing, on what future projects they want to undertake, and talk to the committee about funding.

Other groups may only come together for a short time when a particular project needs help. The recent publication of the *Church and Graveyard Guide* would not have been possible if a group of ladies had not spent time in investigating the graves and producing names and dates. Similarly, when the archive needed cataloguing a group of helpers went through the documents and prepared the paperwork which in the future will enable us to put the archive online.

We have an evolving Research Group already. The Lyminge Family History Group has been very helpful in researching our local history and without them the recently revised *Lyminge Men Remembered* would not have been published. They so enjoyed the inquisitive nature of the task they asked to change the Group's name to include the word Research and this will happen at December's AGM.

The running of the Society is also supported by non-committee members; the editor who puts together the books and guides, a technical editor who arranges the printing of publications and maintains the web site, and as I have mentioned, the Lyminge Family History and Research Group. Non-committee members have in the past acted as liaison officers between the Society and other organisations.

This leads me of course to my reason for writing. As I said at the beginning in December we need to elect a new chairperson, we are also looking for a refreshments co-ordinator and a deputy chair. The committee meets regularly throughout the year. During busy periods this can be monthly but at other times alternate months. During the summer months of June, July and August there is a summer break similarly a winter one, in December and January. Meetings last no longer than 2 hours and are carried out in a friendly fashion with minimum formality.

So, next year we see the committee as being a coordinating body between groups and individuals who will be active in their groups. We will still need our core Officers to meet the needs of the Constitution and also to ensure that the Talks take place, books are stocked and the finances of the Society are running smoothly.

If you have any ideas on projects/activities the Society could undertake, joining a particular group or groups, or helping run the Society please contact me on 01303 862972, or email me jon@serenitas.co.uk or pop in to Korf House, opposite the Lyminge Food and Wine in Canterbury Road. I will be very pleased to hear from you.

John Carr (LHS Chairman 2014).

October 4th
It's the
ETCHINGHILL
VILLAGE MARKET
Local crafts including,
Wood turning, hand made cards,
personalized pictures.
Free parking
Bacon bap, £1.20
Saturday October 4th
Etchinghill Village Hall from 10am

For further details contact John on 863819. Charity No, 302736.

In Aid of Lord Whisky Sanctuary Fund

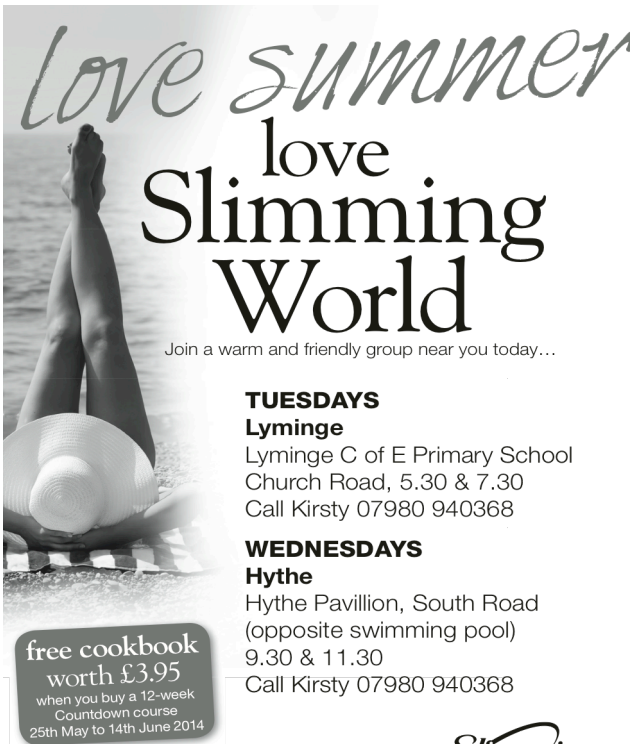
Registered Charity: 283483. Park House, Stelling
Minnis, Kent CT4 6AN Tel: 01303 862622 Fax: 01303
863007 www.lordwhisky.co.uk ~
lord.whisky@btinternet.com

End of Year Boot Fayre & Clearance Sale

Saturday 11th October
at Park House, Stelling Minnis
Boots from 8am - all boots just £5
Refreshments ~ Admission by donation

Forthcoming Events:

Autumn Bazaar
Lyminge Village Hall
Saturday 15th November
10am - 1pm
Tables £10 - to book, ring 01303 862622





Love summer
love
Slimming
World

Join a warm and friendly group near you today...

TUESDAYS
Lyminge
Lyminge C of E Primary School
Church Road, 5.30 & 7.30
Call Kirsty 07980 940368

WEDNESDAYS
Hythe
Hythe Pavillion, South Road
(opposite swimming pool)
9.30 & 11.30
Call Kirsty 07980 940368

free cookbook
worth £3.95
when you buy a 12-week
Countdown course
25th May to 14th June 2014

slimmingworld.com
0844 897 8000  



Lyminge Village Hall

AUTUMN QUIZ

on

Saturday October 11th

at

7.00pm for 7.30pm start

*Stroll down to the village hall for a fun
packed evening*

Tables of 6 - 8 persons

£8.00 per person

Two course hot supper

Licensed Bar

To book your table call:

Honor 862928 or Niki 812651

Organised by the Village Hall Management Committee Reg Charity 281845



NURSE PLUS
Offering personalised
care & support at home for

- * Elderly * Physically Disabled * Learning Disabled
- * Dementia * Complex Care * Mental Health
- * Home from hospital and more...

Our trained staff are available 24 hours a day, 7 days a week, offering assistance with personal care, domestic work, getting in and out of bed, bathing, day trips, social inclusion, assistance getting dressed and much more..

Registered with the CQC Care Quality Commission

Call today & see how we can help
01303 250200
Direct payments & Kent card accepted
homecare@nurseplusuk.com www.nurseplusuk.com



THE ORIGINAL
SATURDAY MARKET
TAYNE CENTRE
18th OCTOBER
CHURCH RD LYMINGE
9am TO 12noon



All Profits to Tayne Centre Refurbishment Fund
FOR LOCAL PRODUCE AND CRAFTS
GIFTS AND MUCH MORE
Established over 3years



Lyminge Pre-School



'OUTSTANDING' - in every category
Ofsted Feb 2011

We are now open between 8am and 6pm
ALL YEAR ROUND

We are a well established pre-school with committed, enthusiastic and highly qualified staff passionate about providing the highest standards of childcare.

To arrange to meet the team, please call:
01303 863149 (day) or 07709420736 (eve).

Alternatively, email lymingepreschool@gmail.com and visit our website www.lymingepreschool.org.uk

Rhodes Minnis Toddler Group



We are having a Coffee Morning on Thursday 16th October (during our meeting) 10.30-12noon.

Cake and Sales Tables plus Raffle

Everyone welcome, with or without children.

Come and meet some of our Mums and children.

For more information phone Elaine on 01303 863096

Lyminge Baby and Toddler Group

Calling all parents, grandparents or carers with children under school age at a loose end on Tuesday mornings.

We meet every week [during term time] at the Tayne Centre in Lyminge between 10.00am and 12 noon to give the children a chance to play and interact with others the same age. We offer a wide range of craft and play activities, including trikes, bikes and slides to painting books and jigsaws.

We charge £1.50 per session (1st session free), which includes 'half time' refreshments for adults and children.

ETCHINGHILL BABY AND TODDLER GROUP

We are a friendly toddler group, which caters for babies and children from 0 to school age. Tea/coffee and healthy snacks are provided.

In dry weather there is outside access for the children. Crafts and a music session are provided each week. We meet on Wednesdays between 10am and 12pm

If you have any queries please contact

Kathy Robinson 07930919340

"The mark of a great man is one who knows when to set aside the important things in order to accomplish the vital ones." – **Brandon Sanderson**

Editor: pb@pbarnes20.plus.com

Shuttlesfield Barn – 4 Star Gold – Self Catering

Rural location. Two bedrooms, ensuite shower and wetroom. Disabled facilities. Short and longer stays.



Families, dogs, horses welcome. Located on walking, cycling, riding routes. Heated outdoor pool in summer.



Info@shuttlesfieldbarn.co.uk Tel:01303862729

APPLE PRESSING & FOOD FAYRE WEEKEND

Always a popular event at **The Elham Valley Line Trust** is the Apple Pressing weekend, and this year extended to include a Food Fayre. As well as the apple pressing - combining a medley of Kentish apples - there will be local honey, hand made preserves, special breads, chocolates and fudges and many other delicacies to sample and buy as well as our resident local crafters in George's Barn at Peene.

Admission is Free to the **Apple Pressing & Food Fayre** at **George's Barn, Peene** on **11th & 12th October** from 10 a.m. – 5 p.m.

Rest in our Tea Room and enjoy a cupper and other foods and round off your visit by taking in the Railway Museum (normal admissions applies) via the Tangled Trail and enjoy a miniature train ride.



LYMINGE HISTORICAL SOCIETY Presents

The amazing WW1 diaries of Sister Edith Appleton OBE RRC

An illustrated talk by
Dick Robinson - Edie's great nephew with Jane Buss as the voice of Edith Appleton

Tuesday
7th October
7:30pm
Tayne Centre
Church Road
Lyminge



For this exceptional evening, advance tickets are available for non-members & visitors through Laing Bennett, or at Korf House (opposite the Lyminge Food & Wine Store) at £4 each. For members, of course, entry is free.

Part of the LHS's WW1 Commemorative Programme

Refreshments will be served.

Tel. No. 07759 260816

Website: lymingehistoricalsociety.co.uk

01303863737



Lyminge Gardeners' Society

AGM

A chance to look back at our events this year and find out our exciting plans for the 2015 season

Tuesday 14th October 2014

7.30pm

The Tayne Centre

(New members, visitors and new ideas always welcome)

Refreshments, Homemade Cakes

Letters To The Editor.....

Ackey & Chris Esposito, would like to thank the very kind lady from Elham, who so kindly, found our dog Mara, walking on the Canterbury Road in Lyminge, and put her in her car, and then took her home. Also a big thank you to our neighbours Audrey & Jack who raised the concern that Mara was missing. It's so lovely to know how kind the people in our villages are. Once again thank you, to the anonymous person for your kindness. All ended well thanks to you all.

WINE TASTING

November 22nd 7pm
Etchinghill Village Hall

Have an enjoyable evening while you sample a wide range of quality wines

Cheese board included

£10.00 per person in advance

£15 on the night.

(Over 18's only)

A wine expert will describe the various wines. All you have to do is drink them! There will be NO selling of wine on the night.

Limited numbers so please phone early to reserve tickets.

Phone John 863819, or Sylvia 863547

Charity no 302736

WINE TASTING

WINE TASTING

FOLKESTONE DISTRICT NATIONAL DANCE GROUP

Meets on **Tuesdays** 7.30 – 9.30 pm from late September to mid-June at **Newington Village Hall**, Newington, Folkestone, to learn and enjoy folk dances from many different countries. No experience or partner necessary.
Tel: 01303 249199 or 01227 709557

ETCHINGHILL RESIDENTS' ASSOCIATION

Etchinghill Cinema Club

FILM SHOW

"CAPTAIN PHILLIPS" PG13

Monday, 20th October

Etchinghill Village Hall at 7.15pm

Entrance Fee £5 per head

includes Membership

FREE Refreshments and Raffle



Lorraine 863333 for info.

SHEPWAY LIFELINE

HELPING PEOPLE TO LIVE INDEPENDENTLY IN THEIR OWN HOME FOR LONGER

The service they are renowned for is the red button pendant that is worn around the neck or wrist. In an emergency, when it is pressed, it calls for emergency assistance. The Lifeline really is a life saving service and is highly valued within the community. By enabling people to live in their own homes for as long as possible, it avoids the need for expensive residential and nursing home care.

Shepway Lifeline is Telecare Services Association accredited and has an innovative 24/7 monitoring centre, supplying all facets of Telecare alarms, including care and security solutions for vulnerable individuals, lone workers and local businesses.

To contact Shepway Lifeline: -

Phone - (01303) 242615 or 242971

Address - Shepway Lifeline, Civic Centre, Castle Hill Avenue, Folkestone, CT20 2QY

Email - lifeline.proactive@shepway.gov.uk

Website - www.shepway.gov.uk/lifeline

The Lord Whisky Sanctuary Fund

Registered Charity No: 283483

Come and visit

The Lord Whisky Tea Rooms

at Rhodes Minnis CT4 6XY

(turn at Six Mile Garage on the B2068)

Open daily from 10am—4pm

for breakfasts, lunches, teas and snacks

Fish & Chip Supper every Friday evening

from 6pm to 9pm

(orders taken from our normal menu)

We will also open at times to suit you for Birthday Parties, Wakes, Business Meetings, Club Meetings, Seminars etc.

Contact us on 01303 862622/862349

or email us at lord.whisky@btinternet.com

www.lordwhisky.co.uk

Thank You....

I would like to thank everyone for the cards and messages received on the occasion of my 90th birthday. Also, my thanks for the kind donations for Operation Sunshine (over £200). This money will go to the Pearl Education Zone in Lusaka and put a roof over the old barn, which is used as a school there.

Pearl Furminger

**Music to raise the roof
on a Gambian school**
18th October 2014 7:30 pm
Baptist Church, Cheriton Road, Cheriton

Tickets £6 available from:
Rochfords, Cheriton Road, Cheriton
or Laing Bennett, Station Road, Lyminge.

Compered by
Mike Chisnall

Joskins Duo

Mikey B

Bottles

Chris and Alan Davis

Fred James

All proceeds will go directly to the school in Gambia
With thanks to all performers who have given their time free
and to The Baptist Church for the venue.

NHS South Kent Coast

Improvements to Treatment in Folkestone

In response to the changing needs of the local population, improvements are being made to the way people receive treatment for minor injuries and illnesses in Folkestone.

From Wednesday 1 October, a new extended access GP service at the Royal Victoria Hospital will make it easier for local people to access a GP from 8am to 8pm seven days a week.

Highly trained minor injuries nurses will support the GP service and the GPs will have full access to patients' records – something that patients have voiced overwhelming support for.

The change is being made thanks to the Prime Minister's Challenge Fund, which has seen Folkestone and Dover GPs successfully bid for around £1.89 million to improve access to care for 94,940 patients.

Meanwhile, also from Wednesday 1 October, Folkestone Walk-in Centre will be a Minor Injury Unit, focusing on the treatment of minor injuries such as suspected fractures of arms or lower legs, minor burns, and bites and stings, for everyone aged 12 months and above. They will not however treat patients with minor illnesses.

The Clinical Chair of NHS South Kent Coast CCG, Dr Darren Cocker, said: "The Prime Minister's Challenge Fund will enable us to improve and enhance primary care in Folkestone, giving access until 8pm every evening and at the weekend. By making these changes, we can ensure that the people of Folkestone have access to primary care that can respond to future challenges."

Patients who need urgent medical advice or are not sure which service they need, should initially phone NHS 111 (available 24/7) or visit Health Help Now, the free Kent and Medway NHS web app, at www.healthhelpnow-nhs.net

If they have a common illness, pharmacists, who are highly trained professionals, may be able to help. They can provide advice and information about many common health problems.

If patients need to see a doctor, they should continue to phone their own practice between 8am and 6.30pm Monday to Friday.

TAYNE CENTRE Hall HIRE

Previously known as the
Lyminge Methodist Church Hall



Clayson Hall

1 October to 31 May (including heating) £9.00 per hour
£32.00 per 4 hour session :£64.00 full day
1 June to 30 September
£6.50 per hour :£23.00 per 4 hour session :£46.00 full day

Rigden Room (Parlour) with heating, if required*
£6.50 per hour all year (*electric - over heaters).

Burren Room with heating, if required*
£5.00 per hour all year, (*electric - over heaters)

Overnight Stays

1 June to 30 September £40; 1 October to 31 May £55

For any enquiries please call **07971 722 401**



for buses from Lyminge Post Office to
Folkestone Town Centre via Etchinghill & Cheriton High St.

MONDAYS TO SATURDAYS except Bank Holidays

There are route 17 buses at 0705 (not Saturdays), 0749, 0912, 0939 (not Saturdays), 1004, 1104, 1204, 1304, 1404, 1504, 1614 (1619 on schooldays), 1629 (schooldays only), 1654 (schooldays only), 1719, 1819, 1919, 2113 and 2313.

There are also route 18 buses to Sandling Stn & Hythe - for times see our website or call the number below.

SUNDAYS & BANK HOLIDAYS

There are route 17 buses at 0947, 1147, 1347, 1547, 1802 and 2002.

for buses from Lyminge (opposite Samuel Jacob) to
Canterbury City Centre via Elham, Barham & Bridge

MONDAYS TO SATURDAYS except Bank Holidays

There are route 17 buses at 0727 (schooldays only), 0732, 0752, 0904, 0944, 1044, 1144, 1244, 1344, 1444, 1559 (Saturdays and Mondays to Fridays during school holidays only), 1614 (schooldays only) 1704, 1804, 2001 and 2201.

There are also route 18 buses to Canterbury via Stelling Minnis and Bockingham - for times see our website or call the number below.

SUNDAYS & BANK HOLIDAYS

There are route 17 buses at 0827, 1027, 1227, 1427, 1642 and 1842.

These times will operate from 8th January 2012.



timetable information **0871 200 22 33**

Calls cost 10p per minute plus network extras

www.stagecoachbus.com/eastkent

Lyminge Village Hall

Lyminge Village Hall is one of 14 Hallmark L2 accredited village halls in Kent. Consequently, we offer a safe, secure and well managed village hall and this accommodation:

1. **Committee Room**, suitable for up to 12
2. **Harry Storey Room**, ideal for small club activities
3. **The main hall**, great for dances and large celebrations with bar, servery and full stage

We remain a competitive local venue ideally situated off the main road with ample parking. Examples of prices for the main hall are:

Friday or Saturday evening £65.00, weekday evenings £20.00 and all day Saturday £135.00. **For full price details and room availability call our booking secretary, Sam Cunningham on 863256**

ETCHINGHILL VILLAGE HALL HIRE FEES

The next time you are thinking of holding a function you should try Etchinghill Village Hall, which holds the highest Hallmark accreditation level, with its excellent facilities, including ample parking space.

The standard hire charge for the main hall and kitchen are:

Weekdays	£10.00 per hour
Saturdays	£12.00 per hour
Sundays	£12.00 per hour

During the winter months (1 November to 31 March) a Winter Supplement of £1.00 per hour is added to the above rates.

Special rates apply for weddings and all day events with a range of discounts on the above rates applying to all lettings of more than three continuous hours and additional discounts are available to Etchinghill Residents and Regular Hirers.

The use of a separate Committee Room is also available.

For all bookings or enquiries please contact:

Sylvia Williams on 01303 863547

RHODES MINNIS VILLAGE HALL

Are you looking for a hall in which to hold Practice sessions, private party/function or Meeting? Rhodes Minnis Village Hall has the capacity to take parties of up to 100 and has kitchen facilities at no extra cost.

Rates:

Sun – Fri £14.00 per session. £34.00 per day
Sat - £20.00 per session. £27.00 evening session
£55.00 per full day.

Session Times:

AM session 8.30am – 12.30pm
PM session 1.30pm – 5.30pm
Evening Session 6.00pm – 11.45pm

A returnable deposit is payable in advance. Regular users will be given a special reduced rate.

**For details contact 07849 217793
or by email: book@rmvh.org.uk**

Sibton Park Cricket Club Pavilion

Having a party? Need a local venue?
Why not take advantage of Sibton Park Cricket Club's lovely pavilion?

We have a bar with club price drinks & friendly efficient staff.

There is capacity for up to 100 guests. For further information or to make a booking please

Contact Lesley Kirk, Tel: 01303 862366

EVENT PLANNER

This page is printed to give readers and organisers the opportunity of planning events without clashing with existing ones, which are already in the 'diary'. It is not intended as a means of advertising and we take no responsibility for errors or omissions. Acceptance is at the discretion of the editor. Please send your updates by email to pb@pbarnes20.plus.com or via methods outlined on Page 2. Location and name codes follow:

C&H: Coach & Horses; **ECC:** Etchinghill Cricket Club; **EVH:** Etchinghill Village Hall; **ERA:** Etchinghill Residents' Association; **ES:** Elham Square; **JC:** Jubilee Centre; **JF:** Jubilee Field; **LB:** Laing Bennett; **LL:** Library; **LMC:** Lyminge Methodist Church; **LPC:** Lyminge Parish Church; **LSH:** Lyminge School Hall; **LVH:** Lyminge Village Hall; **LW:** Lord Whisky; **NP:** Nailbourne Parlour; **NVH:** Newington Village Hall; **PC:** Postling Church; **PH:** Lord Whisky, Park Hse. **PVH:** Postling Village Hall; **RVH:** Rhodes Minnis Village Hall; **RMC:** Rhodes Minnis Church; **SNL:** See News Letter for info; **TC:** Tayne Centre.

ONE OFF or IRREGULAR EVENTS					ONE OFF or IRREGULAR EVENTS				
Date	Time	Event	Where	Tel. No.	Date	Time	Event	Where	Tel. No.
4 October	7pm	Quiz	EVH		8 November		Firework Display	LVH	
4 October		Etchinghill Boot Fair	ECC	079340 08600	9 November	10.45	Act of Remembrance	LPC	
5 October	11am	Combined Harvest Festival	LPC		21 November	9.30am	Christmas Fair	JC	269602
7 October	7.30pm	Historical Society Special Event	TC	077592 60816	22 November	7pm	Wine Tasting	EVH	
11 October	7.30pm	Autumn Quiz	LVH		26-29 November		Hi-de-Hi Play	LVH	
12 October	10am	Apple Pressing and Food Fayre	Peene		28 November	7.30pm	Music on Friday	LPC	
14 October	7.30pm	Lyminge Gardeners' AGM	TC	862264	6 December	7pm	Big Fat Christmas Quiz	EVH	863819
18 October	7.30pm	Music to Raise the Roof	Cheriton Baptist C		6 December		St Nicholas Fayre	LVH	
31 October	7pm	Halloween Quiz Night	Cat Sanctuary		12 December	7.30pm	Cantores Dominicæ Choir	Sibton Park	863992
22 October	7.30pm	Rhodes Minnis Village Hall AGM	RVH		17 December	7.30pm	Cantores Dominicæ Choir	LMC	863992
1 November	7.30pm	Quiz (funds for Tayne Centre redevelopment)	C&H	863049					

WEEKLY EVENTS					WEEKLY EVENTS				
Day	Time	Event	Where	Tel. No.	Day	Time	Event	Where	Tel. No.
Mon	10:00am	Open House	EVH	863394	Wed	6pm	Karate for Juniors	EVH	07554004526
Mon	10:00am	Bridge Club	BC	863177	Wed	7:00pm	French Conversation Grp.	KH	862972
Mon	10:30am	Lyminge Larks (Singing)	TC	01233 750223	Wed	7:30pm	Cantores Dominicæ Choir	LSH	01233 840961
Mon	11am	Cookery	JC	01303 269602	Wed	7:30pm	Circuit Training	TC	07951 698 008
Mon	2:30pm	Monday Fellowship	TC	862164	Wed	8:00pm	Scottish Country Dancing	EVH	862761
Mon	5.45pm	Lyminge Youth Theatre	TC	862602	Thu	10:00am	RM Toddler Group	RVH	863096
Mon	6.30pm	Judo Club	LVH	862946	Thu	10:00am	Art Group – Morning	TC	211364
Mon	7:30pm	Circuit Training	TC	07951 698 008	Thu	11am	Shopping Trips to Local Supermarkets	JC	01303 269602
Tue ¹	10.00am	Baby and Toddler Group	TC	863274	Thu	2:00pm	Art Group – Afternoon	TC	862972
Tue	10.30am	Art Class	JC	01303 269602	Thu	6.00pm	Ballroom & Salsa Dancing	EVH	07967979610
Tue	11.15am	Chairrobics	JC	01303 269602	Thu	6.45pm	Short Mat Bowls	LVH	862293
Tue	6pm	Football Training	JF	07967342226	Fri	9:10am	Circuit Training	TC	07951 698 008
Tue	6.45pm	Short Mat Bowls	LVH	862293	Fri	11am	Seated Exercise	JC	01303 269602
Wed	10:15am	Mature Movers (Exercise)	TC	862873					

MONTHLY EVENTS					MONTHLY EVENTS				
When	Time	Event	Where	Tel. No.	Day	Time	Event	Where	Tel. No.
1st & 3rd Mon	10:15am	Health Walk	LVH	862959	3 rd Wed	7:30pm	RM Evening Circle	RVH	862913
2nd & 4th Mon	10:15am	Health Walk	ES	862959	Last Wed	7:30pm	Quiz Night	C&H	862694
3 rd Mon	7.30pm	Etchinghill Cinema	EVH	863333	4 th Fri	7:30pm	Beetle Drive	RVH	862616
Last Mon		Parish Council Meeting	SNL		4 th Wed ⁴	11am	Singing for Health	JC	862364
1 st Tues	11am	Reminiscence	JC	01303 269602	Last Fri	1.30pm	Team Quiz	JC	269602
1 st Tues ²	7:30pm	LHS Talk/Event	TC	862972	1 st Sat	10:00am	Village Market	EVH	863819
3 rd Tues	2:30pm	Etchinghill W.I.	EVH	863503	2 nd Sat	10:00am	Postling Ch. Coffee Morn.	PC	863536
3 rd Tues ³	7.30pm	Gardening Society	TC	862264	3 rd Sat	8:00am	Saturday Market	TC	862164
1 st Wed	10:30am	Lyminge Friends	LMP	862598	Last Sat	11:00am	Lyminge Poetry Group	LL	863474
2 nd Wed	10:30am	Mothers' Union	NP	862221	3 rd Sun	10.00am	Parish Walk	Richard	862015

¹ In term time only ² Except Jan, Feb, July and August ³ Except Jan, Feb, Aug ⁴ Except Aug and Dec

Out and About

Do you have any photos of local events or local groups in action, please call 01303 862699. Give your group a FREE plug !



The **Etchinghill Petanque Competition** was held on Saturday 13th September with 18 players and a good group of spectators. the event was held in aid of Macmillan Cancer Support and £125 - 25 was raised - well done to all the players and the spectators !

Lyminge Friends seen on their recent trip to sample the cream teas and to see the Living Museum at The Walpole Bay Hotel in Cliftonville. on 10th September.

See also page 3.



Lyminge Mothers' Union enjoying a cream tea at Rhodes Minnis on September 10th.



Pearl Furminger's 90th birthday celebration at AgeUK, organised by Operation Sunshine as Pearl sponsors an academy for children in Lusaka.

Congratulations Pearl !



Does your group have a celebratory treat that we can include on this page next month ??

Mystery Photo



Last month's picture was the roof of the shelter at Lyminge Primary School. Try this one !



01303 720126 CBA
baker@lymingecountrybakery.co.uk
www.lymingecountrybakery.co.uk

Products we provide

Traditional Loaves Artisan Bread
Mini Loaves Savoury Products
Gluten free Confectionery
Baguettes Bakery Specials

Local Bookkeeper



Sole Trader & Small Business Accounts
VAT, Self Assessment, Payroll, CIS
& General Administration Services

Call or e-mail:
Tel: 01303 864229 Mob: 07885 458 304
e-mail: tash@bestbookwork.co.uk
www.bestbookwork.co.uk



THE DRIVING INSTRUCTOR

ROGER DOWLE

ADI QUALIFIED
PATIENT & PROFESSIONAL TUITION
FOR MORE INFORMATION OR TO BOOK A LESSON PLEASE CALL ROGER

07870939936

INTRODUCTORY OFFER, BEGINNERS ONLY, FIRST FIVE HOURS £80!

SEATHWAITE BOARDING CATTERY LTD.



Supporting Rhodes Minnis Cat Sanctuary
GREEN LANE, RHODES MINNIS, CT4 6XU
TEL: 01303 862243 (Registered charity 262245)

ONLY CATS BOARDED, IN QUIET COUNTRY LOCATION

Individually heated chalets. Single cat £6 per day, a reduction for 2 or more cats. All cats boarded with us must have current vaccinations against cat flu & feline enteritis. All profits from the boarding cattery go to support homeless cats in the Sanctuary.

RHODES MINNIS CAT SANCTUARY

has a wide variety of cats available to caring homes.

Luke Southwell Ltd.

Fast and Friendly Electrical Contractors
Fault Finding



New Installations

Board Changes

Testing & Inspecting

For free quotation 01303 863 203 / 077 678 21552

East Kent Foot Care

Mobile Foot Health Practitioner

Jo Shapter BSc (Hons), MCFHP, MAFHP

Treating and managing common foot problems, corns, callus, verrucae, thickened nails, toe nail management, fungal problems, diabetic foot assessments etc.

Call: 07745 532075

Member of the British Association of Foot Health Professionals



ELHAM VALLEY AND WYE LIONS CLUB

Congratulations to the Valley Vikings team from Elham Valley Vineyard, who came first in the annual It's a Knockout competition held in September at Tenterden. Also well done to the Broadstreet Bashers team from Lyminge who also did well. Both teams were sponsored by EV&WLC. Ten teams in all from across SE Kent took part in the competition, which was organised by local Lions Clubs.



COUNTRY FARE

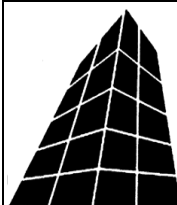
CATERING SERVICES

Country Weddings, Christenings and All Family Gatherings, Corporate Lunches, Seasonal Parties & Celebration Cakes

Contact: Sally Burr Telephone: 01303 863642

Mobile: 07814 610995

Email: sallycountryfare@gmail.com



Filehurst Associates

Archive, Warehousing, Logistics, Business & Household Storage.

Domestic & Commercial removals and storage.

01303 239990 www.filehurst.co.uk



FRESHLOOK GARDENS

Regular lawn mowing service.

Garden design. Hard and soft landscaping. General garden work, fencing and decking. Turfing hedge cutting, small and medium tree work.

Water features, ponds and patios.

For free quotation ring Geoffrey Hogben

01303 844 680 / 07866 091633

sales@freshlookgardens.info

www.freshlookgardens.info

Established since 1990. Fully insured.

Browns

Sales & lettings
7 days a week



Over 40 years of Kent village and country property

Elham 01303 840422 | Hawkinge 01303 892000
www.brownscountryproperty.co.uk

LYMINGE NEWSAGENTS

11-13 STATION ROAD, LYMINGE CT18 8HS

01303862566

**POST OFFICE, 'OFF LICENCE' and
CONVENIENCE STORE**

Dry Cleaning and Laundry, can deliver Papers

NEW OPENING HOURS

7AM TO 10PM EVERY DAY



Local Tradesman

J Tappenden

Established 36 years

Painter/Decorator/Builder

Tel 01303 862467

Mob: 077755 78008

'Helping you enjoy your garden'

CRT Gardening

Knowledge of general gardening, including lawn care, hedge trimming and cutting, vegetable garden work, fencing installations and repairs, small and medium size tree work and ongoing maintenance of all of them.

Heavy-duty work is also undertaken.

Free estimates; fully insured. Karl Dodd 07967442518

Email: karl.dodd@live.co.uk www.crtgardening.co.uk

Jackson Plumbing

Property Maintenance

Complete bathrooms and tiling

No job too small. Special rates for OAP's.

Telephone: home/evening 01303 270691

or daytime 07773 089398 or 07864 929826

(please note new mobile numbers)

BEAVER BUILDERS

Jon Daughters

Conversions	Driveways	Plastering
Roofing	Patios	Decorating
Carpentry	Drains	Plumbing

FREE ESTIMATES

Tel: 01303 863371

SIX MILE GARAGE LTD

Stone Street, Stelling Minnis, Canterbury, Kent CT4 6DN

- Car and light commercial servicing
- Class 4 and 7 mots and repairs
- Car and light commercial accident repair centre (insurance approved)
- Diagnostics bay with latest equipment
- Tyre bay with four wheel alignment and balancing
- Air conditioning servicing

Tel. 01227 709214 or 01227 709491, Fax 01227 709331

E-mail: office@sixmilegarage.co.uk

Trevor Law

Electrical Installations

Serving Elham Valley

for 30 years

Part P Registered

Telephone 01303 840950

J. V. Services

Mobile Mechanic

Servicing and Repairs:

- Garden Machinery
- Ride on Mowers
- Trailers & Horseboxes
- Quad Bikes
- Classic Cars

(Free collection and delivery)

Serve/Repair/Full Restoration:

- Compact Tractors
- Vintage Tractors
- Classic Tractors

Mobile: 078 0300 3047

Home: 01303 862963

john@jvserviceskent.com

DILTON

MINI SKIP HIRE

Ballast, Hardcore, Sand and Topsoil Supplied

REGISTERED WASTE CARRIER

Telephone: 812448 or

Mobile 07799 433754

M. J. Athow

BUILDER & DECORATOR, EST. 1965

GENERAL MAINTENANCE

Qualified and Insured. Free estimates

Telephone: 862616 Mobile: 07976 306665

Email: m.j.athow@live.co.uk

Website: <http://mjathow.spaces.live.com>

AIR LINK CARS

(You pack up, we pick up)

Airport, Seaport & Long Distance Travel Specialists.
The Family Run Business where service really counts

Estate cars and People Carriers

Fixed price 24hrs a day. No extras.

Written Confirmation of booking.

For the Easy Airport Link, Think Air link!

01303 862704 - 07753 760897



WILL WOODBRIDGE

Carpenter/small works builder

With years of experience

Telephone 01303 863062



Laing Bennett
INDEPENDENT ESTATE & LETTING AGENTS

PHILIP A CHAPMAN

With our excellent local knowledge, service
and two local offices we will get you moving

The Estate Office 8 Station Road Lyminge Kent CT18 8HP
T 01303 863393 E lyminge@laingbennett.co.uk

134 High Street Hythe Kent CT21 5LB
T 01303 264846 E hythe@laingbennett.co.uk

www.laingbennett.co.uk

Picture Framing

All types of framing undertaken, including
tapestries, cross stitch, medals & badges etc.

Can collect and deliver.

Phone Lyminge (01303) 863449

Claire's Country Kitchen



Join us and enjoy some of our delicious home-baked items,
Breakfasts, Light Lunches, and Snacks with a selection
of Teas or Coffees.

Open Tuesday – Saturday, 7.30am to 4.00pm

Canterbury Road, Lyminge, Kent CT18 8HU

01303 864222

SCRUBBERS - Est. 1988

THE HOME AND COMMERCIAL CLEANERS

One off, regular or moving day 'Blitz'

Oven cleaning – Ironing

Carpet cleaning and more...

For a friendly and reliable service

Free Estimates Tel: 01303487019 or 07834128671

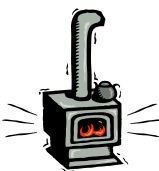
Dennis Huntley

Installer of wood and multi-fuel stoves & fireplaces
Heating engineer, solid fuel servicing and

chimney sweep

01303 862343

07850 784365



R. B. BUILDING SERVICES

General Maintenance, Painting, Carpentry,
Plumbing, Upvc Fascias and Guttering.

Fully Insured

For a free quote please ring Roy Bowling on

Home Tel: 01303 863267 – Mobile 07947 132319

HYPNOTHERAPIST

For help with anxiety, weight loss, smoking cessation,
stress, fears, self esteem, exam nerves, relationship
issues and much more. **Julie** is a member of British
Association of Therapeutic Hypnotherapists, with
much experience and proven results. To discuss in
confidence and book an appointment contact her on
07773502399.

HOLDEN PLASTERING

All aspects of Plastering
Smooth-over Artex - a speciality.
Coving, Tiling and Plumbing

Phone JAMES for free estimate or advice on:

Tel: 01303 770449

Mobile: 07773 262970

D.M.B. Plastering

All aspects undertaken

Interior. Exterior. Plastering. Rendering.

Coving. Ceilings Wall. Floors

Finest quality assured. CSCS Certified.

26 years experience.

Free estimates. Reliable service. Fully insured.

Call David on 07818 607209

P Davis + Co

General Builders and Roofing Specialist

All work undertaken

Call for free estimate

Tel: 01303 863049 or 0784 6769643

Personal Computing

For straightforward I.T. advice, solutions and training

Contact:

Steve Ashman

862869

sra@ashman-consulting.co.uk

Lyminge
Country
Barn

We are still Open!
Down the alley in
the Barn

Monday to Friday

9am till noon

Saturday 9am - till 1pm

Products We Provide

Equine Food & Supplement

Wild & Domestic Bird Seed

Dog & Cat Food

Sheep Goat & Chicken Feed &

Supplements

Pest Control Products

Plus Many Other Items For Country

Living

01303 720034

Wilco Plumbing & Heating

Central Heating Installations & Repairs

Gas & Oil Boiler repairs & replacements

5 Year Guarantee on Worcester Bosch Boilers.

Local Experienced Engineer, Emergency plumbing 24/7 call out

Registered with the Institute of Plumbing

Gas Safe Registered-OFTEC Registered

KCC Trading Standards Approved

01303 862173 07860 452640

paul@wilcoplumbing.co.uk

www.wilcoplumbing.co.uk

TOBY'S TREE SURGERY

Thinning – Reducing – Maintenance – Felling

ALL TREE WORK, BOTH PRIVATE AND COMMERCIAL,
UNDERTAKEN BY OUR NPTC TRAINED OPERATIVES

Professional Friendly Service

FREE ESTIMATES - FULLY INSURED

Contact Toby Griggs: 07854 098 395

or (01303) 863642



D. SCRIVENS

PLUMBING & HEATING

Oil Fired Boiler Installation,

Commissioning, Service and Maintenance.

Unvented Hot Water Systems – Solar Water Heating

Central Heating – Water Softeners – Bathrooms – Showers – En suites

Approved 'Aqualisa' Installer

WATER INDUSTRY 'APPROVED PLUMBER'

FULLY INSURED

Mobile: 07810 897076

Email: scrivensplumbing@aol.com



City & Guilds
Qualified



Registered
Business

K & M LEWSEY LTD

PLUMBING & HEATING ENGINEERS

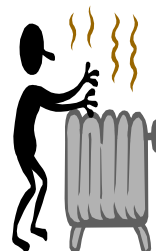
ESTABLISHED 1969

REGISTERED PLUMBER

GAS ACOP APPROVED ENGINEERS

TELEPHONE: 01303 264535

MANNED OFFICE,
DAYTIME MONDAY TO FRIDAY



Total garden care for all your needs

TIM MILLETT

Grass Maintenance, General Gardening, Small & Medium

Size Tree Work, Stump Grinding and Wood chipping

Fencing Repairs & New Installations

Turfing, Hard & Soft Landscaping

Free Estimates - Fully Insured

01303 863676

Mob: 07752 880583

Email: info@tmhorticulture.co.uk

North Downs

Tree Surgery

your local tree surgery specialist

All aspects of tree work undertaken
including the removal of dangerous trees

Felling : Thinning : Reshaping : Crown Reductions : Pollarding : Pruning

Hedge Cutting : Landscaping Service : Logs available

NPTC QUALIFIED – FULLY INSURED

Free advice and quotes

Call Will on: 01227 709 304 or Mobile: 079300 10622



N.P.C.

Domestic Appliance Services

*Service and repair of washing machines, tumble driers,
dishwashers, cleaners and small electrical work. For a
prompt and friendly service*

Call Neil Collard 01303 892234 or 07798716044
or www.npcdomesticapplianceservices.co.uk

Auto Economy Centre

**Fully equipped Mechanical Repair & Service Centre
with the latest diagnostic equipment.**

MOTs £39.95

01303 863656

Orchard Garage, Canterbury Rd, Etchinghill

www.autoeconomycentre.com

Ralph Allard Chimney Sweep

Brush and Vacuum. All chimneys, boilers and stoves swept. Certificates issued.

HETAS and NACS registered, fully insured.

Member of National Association of Chimney Sweeps

Tel: 01303 844465 or 07813716654



REGISTERED OSTEOPATHS & MEDICAL ACUPUNCTURIST

Adam Price B.Sc Hons (Ost) Katie Price B.Sc Hons (Ost)

The Clinic 01303 863359 or mob: 07980 897382

- Treatment of lower back pain, both acute and chronic
 - Treatment of tension/cervical type headaches both acute & chronic
 - Treatment of various stiff & painful arthritic conditions
 - Treatment of sports injuries, both soft tissue & skeletal
 - Deep tissue back, neck & shoulder massage for symptomatic relief
- The cost of your treatment may be recoverable from your insurers. Please check

THE CLINIC

Garden Suite
Pendragon House
4 Station Road
Lyminge
Kent CT18 8HP
01303 863359

info@theclinic-lyminge.co.uk
www.theclinic-lyminge.co.uk



Sunhouse Electrical

Your local reliable Electrician
Part P Registered & Elecsa Approved
Fully Insured & On Competent Persons Register
For a free quotation & advice call James on
01303 766333

www.sunhouse-electrical.com

GOSBEE CONSTRUCTION

Over 30 years experience. Jacksons Expert Installer
Reliable. Friendly. Professional

Property Maintenance
Hedge & Tree Cutting
Tarmacadam Works
Grass Cutting

Building Work
Garden Design
Landscaping
Fencing & Gates

Ponds
Patios
Driveways

Call us for a free, no obligation quote : 07974 835511 or 01303 863337

Visit our website: gosbeeconstruction.co.uk
E-mail us: info@gosbeeconstruction.co.uk

S R Accounting and Business Solutions LLP

"Working hand in hand with your business"

Denise Roberts, ACIS, ACMA & David Sayle

Qualified accountants with a combined experience of over 50 years.

We offer business start-up advice, business planning, monthly & annual accounts,

VAT & tax submissions, full payroll service, company secretarial service.

E-mail: droberts@sr-accounts.co.uk

Telephone: 01303 862559

Mobile: 0751 1097707 Web: www.sr-accounts.co.uk

MANOR VETERINARY CLINIC



We care for
them all great
and small

Lyminge Clinic: Methodist Church Hall - Mon, Wed & Fri pm

Tel: 01303 273203

www.manorveterinaryclinic.co.uk

STERRY'S OF HYTHE

Independent Funeral Director

Always here for you 24 hour service

Home visits on request

Choice of pre-paid funeral plans

01303 264400

41 High St, Hythe (op Lloyds Bank)

ANIMAL CHIROPRACTOR

Treating **HORSES, DOGS & CATS**



Back pain, neck pain, arthritis, stiffness & much more

Human clinics in Cheriton & Westgate

www.backtostraight.com

info@backtostraight.com

Tel: Will Wright 863460 or 07905 031850



Red Dragon I.T. & Red Dragon Web Design



Business Support



PC Health Checks



VoIP Phone Systems



Windows, Mac & Linux Systems



Wired & Wireless Networks



Server Installation



Graphic Design



Website Design



CMS



Business Identities



Intranets



Databases

T: 01303 723456 E: thestudio@rdit.co.uk | www.rdit.co.uk

2 Station Road, Lyminge, Folkestone, Kent, CT18 8HP

LYMINGE FOOD AND WINE

01303 862225

We are here to serve you

Mon. – Sun. 7:00am to 9:00pm

including Bank Holidays

National Lottery Here



Jubilee Farm

Organic Beef, Lamb, Mutton and Pork

Hay, Haylage and Straw available. Free local delivery

M&T Britton Farms, Jubilee Farm, Rhodes Minnis

Tel: 01303 862317 email: cavalryfarm@fwi.co.uk

Email: pb@pbarnes20.plus.com

Advertising? Contact: 01303 863737