

THE LYMINGE NEWSLETTER

For the communities of LYMINGE, ETCHINGHILL, RHODES MINNIS and POSTLING

<http://www.lyminge.org.uk/>

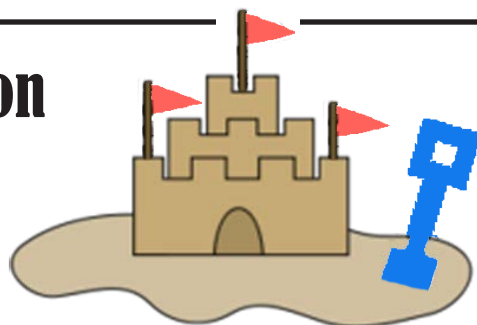
August 2015

Produced by
THE LYMINGE ASSOCIATION

News from the Lyminge Association

Garage Sale Safari ~ this is to take place on Sunday 13th September. Have a summer clear out, save those unwanted odds and ends and turn them into CASH in September ! Watch out for posters for Registration details.

Lyminge Association AGM ~ Monday, 5th October - the venue is yet to be decided, so keep an eye on The Association noticeboard in the car park. Do come along and see what your Association has been doing for the past year and maybe add to our plans for next year !



Lyminge 2016 Calendar ~ this will be the sixth calendar that we have produced.

Have you taken a photo or two that you think might help make up the 2016 Calendar ? Ask for an Entry Form or call 862699 for more information about themes. It could be wildlife, village gardens, rural life as long as it's connected to the local area !

Laing Bennett

INDEPENDENT ESTATE & LETTING AGENTS



PHILIP A CHAPMAN
EST 1927



With our excellent
local knowledge, service
and two local offices
we will get you moving

The Estate Office 8 Station Road
Lyminge Kent CT18 8HP
T 01303 863393
E lyminge@laingbennett.co.uk

134 High Street Hythe Kent CT21 5LB
T 01303 264846
E hythe@laingbennett.co.uk

www.laingbennett.co.uk





LYMINGE PARISH CHURCH SERVICES & ACTIVITIES

Church Website: www.lymingechurch.co.uk

E-mail: office@lymingechurch.co.uk

Sun 2nd Aug	8.00am Holy Communion 11.00am WOW (Ways of Worship)
Wed 5th Aug	NO Holy Communion & Open House Bible Study
Sun 9th Aug	8.00am Holy Communion 11.00am Sung Eucharist
Wed 12th Aug	NO Holy Communion & Open House Bible Study
Sun 16th Aug	11.00am Family Service with Children's Corner 6.00pm Evensong
Wed 19th Aug	NO Holy Communion & Open House Bible Study
Sun 23rd Aug	8.00am Holy Communion 11.00am Sung Eucharist N.B. NO Messy Church this month
Wed 26th Aug	NO Holy Communion & Open House Bible Study
Sun 30th Aug	NO Services in Lyminge 10.30am Benefice Sung Eucharist at Paddlesworth followed by refreshments

ACTIVITIES THIS MONTH

Music on a Friday – August 4th

BBQ at 7pm Music starts at 7.30pm

FREE ENTRANCE, FREE BBQ AND FREE WINE

NEW "ENDLESS KNOT" ROCK/FOLK GROUP

PLUS – AN OPEN MIC TIME

SO BRING YOUR OWN MUSIC BACKING TRACK/INSTRUMENT
AND COME AND PLAY/SING FOR US

If you would be interested in taking part in the Open Mic time
please ring Roger on 01303 6218223

Mothers Union

There will be NO MEETING during August

Coffee Morning in Wentworth Close Lounge

Wednesday 19th August from 10.00am to 11.30am

In the lounge at Wentworth Close (entrance via the car park)

Please contact Lynne on 863010 or Loraine on 863216

Prayer Shawl Knitting Group

Wednesday 19th August from 2.30pm at 26 Nailbourne Court

This group meets to pray and knit shawls for those suffering from ill health or bereavement

New members are always welcome

Please contact Madelaine 863582

Ethelburga Luncheon Club

Thursday 20th August meeting at 12.00 noon

at the Coach and Horses

Please contact Lynne 863010 if you are interested and/or need transport

PADDLESWORTH PARISH CHURCH SERVICES

Sun 2nd Aug	NO SERVICE
Wed 5th Aug	St Oswald Day - church open all day for quiet prayer 7.00pm Holy Communion followed by a talk by <i>Derek Broughton on St Oswald</i>
Sun 9th Aug	9.30am Holy Communion
Sun 16th Aug	NO SERVICE
Sun 23rd Aug	6.00pm Evensong
Sun 30th Aug	10.30am Benefice Sung Eucharist <i>followed by refreshments</i>

"Freedom consists not in doing what we like, but in having the right to do what we ought."

— Pope John Paul II

LYMINGE METHODIST CHURCH

Visitors are very welcome to join us at our weekly service at **11am** and invited to share fellowship afterwards with a cup of coffee/tea.

2 August	Mr Colin Pearson
9 August	Mr Ian Couchman
16 August	Local Arrangement
23 August	Rev Robon Blount
30 August	Rev Kevin Taylor (inc Holy Communion)

RHODES MINNIS CHURCH

This small Chapel in beautiful countryside holds a weekly Sunday Service normally at 9.30am followed by coffee and biscuits. A warm welcome is extended to any visitors.

2 August	Rev Kevin Taylor (inc Holy Communion)
9 August	Mr Ian Couchman
16 August	Rev. Robin Biout
23 August	Mr Ralph Bradshaw
30 August	Local Arrangement

POSTLING CHURCH SERVICES

2 August	6pm Evensong
9 August	9.30am Family Service
16 August	8am Holy Communion
23 August	9.30am Family Communion
30 August	No service in Postling

CHRISTIANS IN LYMINGE

You are all invited to join us at any of the following events

7th Aug	<i>Music on Friday</i> & BBQ 7pm at the Parish Church
15th Aug	Saturday Market at the Tayne Centre.
4th Oct	Harvest Festival in the Methodist Church

Lyminge Newsletter

Terms & Conditions. Copy deadline is 18th August

Please email your copy in to the editor (pb@pbarnes20.plus.com). Your payment must be received before your article or advert can appear in the Newsletter. Please leave your payment along with your name, organisation, telephone number and copy of your ad in a sealed envelope at the Lyminge Post Office or at the Lyminge Library. Business adverts cost £9.50 per month or £95.00 per year. Personal and charity adverts and articles from £3 per month, or £30.00 per year. The annual rate offers 12 entries for the price of 10. Please make cheques payable to **'The Lyminge Association'**. If you do not have email, a typed paper-copy can be left with the payment.

Lyminge Association accepts no liability for the accuracy of the advertisements or subsequent actions arising in conjunction with advertisers in the newsletter.

Further details from Peter (editor) on 01303 863737

BUZZLINES FOR YOUR LOCAL DEPARTURES

A sample of our upcoming programme. This isn't the complete list – lots more on-line. Ask for child prices and large group discounts. Pick-ups in Elham and Lyminge. Home pick-ups for any tour of over 2 nights.

Day Trips

Cutty Sark & Greenwich	Sat 15th August	£36
London River Rover from Elham	Sat 15th August	£30
Chessington World of Adventures	Sun 16th August	£50
Royal River Lunch Cruise & Savill Garden	Sun 16th August	£55
Houses of Parliament, Imperial War Museum & Afternoon Tea	Mon 17th August	£57
St Valery sur Somme & the Steam Train Home	Wed 19th August	£42.50
London Zoo	Thu 20th August	£43
Camden Lock Market	Thu 20th August	£25
Natural History, Science, V&A Museums	Thu 20th August	£25
Bruges	Sun 23rd August	£39
London Eye, Carvery Lunch & Cruise	Sun 23rd August	£79
Dreamland Margate	Mon 24th August	£35
Le Touquet	Tue 25th August	£36
Wakehurst Place & Kingscote, Afternoon Tea & Vineyard Tour	Tue 1st September	£54
Rural France Explorer	Wed 2nd September	£36

Tours

3 Day Mystery Tour	Thu 10th September	£189
Romantic Journeys of Devon (5 days)	Mon 21st September	£429
The Italian Riviera, Monaco & Monte Carlo (9 days)	Fri 25th September	£769
Romantic Journeys of Wales (5 days)	Sun 27th September	£429
Autumn Hues in the Black Forest (9 days)	Sat 3rd October	£575
Half-Board winter escapes 4* Hotel Costa Brava	2-10 weeks from 2nd Jan eg	£750 for a month

Letters to the Editor.....

...from.....**YOUR NEW VILLAGE HALL COMMITTEE**

We would like to introduce ourselves. The Committee held its first meeting on 13th July and it was a very positive, productive and friendly affair. We are a mixed bunch, spanning all age groups and hopefully have some useful skills to enable us to manage the Hall successfully.

One thing that we all feel very strongly about is that though the Hall itself is just a building, it should be a place that is open to all members of the village community. We would like it to become a hub for activities, a place where groups can meet and enjoy themselves and to engender a sense of pride and belonging to something that will grow and flourish alongside a fantastic community spirit.

With this overarching mission we will work hard to introduce lots of new and imaginative ideas. So, while we are in the early stages of grappling with the practical stuff, we ask you to bear with us and 'Watch This Space'! Of course, on that practical note, all current users can rest assured that there will be no change to your current arrangements. I am sure we will enjoy working together. Anyone else who is itching to start a new society or hold a one-off event, then we will be delighted to hear from you. Contact details are given below.

Of course a Vision can only become a Reality if it is shared by everyone, not just a committee. Committees do the laborious work but it is the Community who will make the difference. We are fully aware, for example that the Hall is need of something of an overhaul so it can be a pleasant place to use. We hope that there are people who will be willing to get involved in all sorts of ways. We know there are some great people in the village. We so want the Village Hall to thrive. But it must not be seen as a burden. No single person must feel bowed by the responsibility of it. It should be a chance for us all to enjoy the satisfaction of doing something for a very special community and had a lot of fun along the way.

Everyone who would like to get involved will be very welcome!

Hall fees remain as detailed on last month's bulletin. If you would like to arrange to look round or make a booking, you can get directly through to the Hall during the day on 01303 863149 when the pre-school staff will be happy to help, or use the email address below.

If you would like to volunteer your help or have any other issues feel free to contact us at :

Lymingevillagehall@outlook.com Follow us on: www.twitter.com/Lymingevhall

Your Village Hall Committee

..from....**Lyminge Resident - name and address supplied**

As a Lyminge resident of long standing I attended the recent Lyminge Village Hall AGM and was appalled at the way people conducted themselves throughout this meeting. It was despicable and a disgrace with people paying no respect to others, let alone the guest speaker invited from Action for Rural Communities in Kent, who came to speak on the role of trustees in running village halls. The meeting produced a 'committee' that has assumed control without any vote being cast. Furthermore, many of these people have a vested interest in one of the sections that hire the hall and this raises the question of whether there is a conflict of interests and if they can be legal trustees. Hence, I believe the 'committee' is unconstitutional on both counts as laid out by the Charities Commission.

It is imperative for a thriving community to have a cohesive structure in place, one that combines and enables all the talents found within itself. The community is owed a proper debate and an appropriate election of officers following an extra-ordinary AGM to decide how the village hall will function and develop in the future.

I can take no pride in what has occurred and implore those responsible to do the right thing and seek to re-dress the balance, thereby positioning the village hall on a path of constructive development.

News from Age UK Lyminge...

The Centre is looking even more welcoming than usual now we have had new carpets fitted (thanks to Lyminge Parish Council). The sparkling interior is matched with a sparkling staff team and, from September, an equally sparkling new programme of activities. Sadly, we said goodbye to Sue, but we are delighted that Rachel will be taking her role and she will be supported by our regular staff alongside some new faces. We know the team will continue to provide the great service you are used to. From September, there will be some new activities, including a Book Club, Relaxation and a Health Walk (exploring pastures new). More details next month.

Would you like to join the team? We need:

- Help in the café and shop on Monday, Wednesday and Friday afternoons from 1.30pm to 3.45pm
- Help in the kitchen, café and shop on Thursday mornings from 9am to 12pm
- Drivers to bring our clients to us on Wednesdays and Thursdays from 8.45 to 10.30am, then to take people home again between 2.30 and 4pm. (You are more than welcome to stay at the Centre throughout the day.) You will be driving a small, 8-seater mini-bus which does not require any special license. We'll give you training and plenty of support.

If you can volunteer for any of these sessions we will be most grateful and we're sure you'll enjoy yourself.

JOIN US for a trip to **Buckingham Palace Staterooms** (and optional tour of private gardens) on Thursday 17th September leaving Everist Court at 9am. Please book at Everist Court - £25 for regular AgeUK clients / £35 for non-clients.

REMINDER There are still some places on our autumn coach holiday to **Blackpool** (26th – 30th October). Call 01303 269602 and ask for Matthew for full details.

For more information about any of our events or services call 01303 269602 or email co@ageukhl.org.uk or come and say hello in person – we are at **Everist Court, Station Rd, Lyminge, CT18 8HQ**. Full information available at www.ageuk.org.uk/hytheandlyminge and you can find us on Facebook (AgeUkHytheAndLyminge) and Twitter (@ageukhl)

Rhodes Minnis Evening Circle

At our AGM in May Daphne Andrews was given life membership in appreciation for all the hard work she has done over the years, and in June we enjoyed an excellent lunch on a beautiful day at Lathe Barn. In July we had a very interesting and enjoyable evening when Stuart and Jo Kenny came along with their lovely dogs, Brin and Sky, to tell about Search and Rescue Dogs. This charity, little known to most of us, is also known as Lowland Rescue. Run by volunteers, and working alongside the police, they give up their valuable time to be on call to search for missing persons, of which there are 10,000 per year in Kent alone. Their dogs are family pets specially trained to do this exacting work in all weathers. The competition, a dog ornament, was won by Ann Harris, with Margaret Chambers 2nd, Jean Lissenden 3rd and Pat Barnes 4th.

On the 19th August Ann Finney will be presenting a musical evening of "Maria Callas". We meet at Rhodes Minnis Village Hall at 7.30pm, and visitors are very welcome. For further details contact Diana Bennett on 862134.



Lyminge Dramatic Society

By the time you read this we will have had the reading for **Dial M for Murder** and the director will have cast the play. We will be putting this on in early December- more details in future months.

Come and support us on August 19th when we are, for the first time, having a float at the Hythe Venetian Fete. Titania, Oberon, the White Rabbit, Alice in Wonderland and others will be on our Enchanted Evening themed float, showcasing our costumes.

If you would like to join the Society contact Alex, our membership secretary, on 01303 862622



Lyminge Friends

In July, we heard from Chris McCooey and his talk on Scandals - Sensational, Salacious and Sad and we were looking forward to our annual Garden Party in Fran and Rod's garden - always a lovely afternoon.

On Wed 5th August we have a return visit from John and Jane Buss to talk on Jane Austin in Kent.

In September, on Wed 2nd Ian Porter will give his talk about The Real Downton Abbey and Upstairs Downstairs and on Wed 16th we are off for a Cream Tea.

Meeting are 10.30 - 12.30 in the Rigden Room of the Tayne Centre. Entry is currently £2.00 and includes refreshments. We are a friendly social group and welcome new members. If you'd like to talk to one of us first, please call 863500

District Councillor Report - July 2015

The recent, prolonged episode of Operation Stack and the continuing disruption it causes both to the M20 and the surrounding road network have surely shown that this is not a Kent problem but a national and international problem needing Government intervention and funding. A solution must surely involve a system where HGVs are only allowed to enter Kent when called forward for their crossing. Electronic ticketing, text messaging and apps could provide the means to deliver this. Extra lorry parking is also needed and Shepway District Council has been working with the owners of Stop 24 on the feasibility of extending the existing lorry park to an area between the railway line and motorway on low grade agricultural land. This would provide up to 1,000 extra spaces and help address the year round problem we have of lorry drivers parking on verges and laybys often leaving litter and damaging the verges with the weight of their vehicles.

However, it is clear that it would be impractical to provide lorry parking in Kent for all the vehicles delayed by Operation Stack and Shepway District Council is opposed to plans by Kent County Council to build a large (2,000 plus) lorry park at Junction 11 where it will be a blot on the landscape and still not provide enough space for all the traffic waiting to travel.

Shepway District Council's cabinet (of which we are both members) had agreed in April to take enforcement action against HGVs for inappropriate parking in our district (you may have seen the traffic notices that were posted at these locations). There's a risk that if stopped parking in one unsuitable area the HGVs move along the road to somewhere even more unsuitable. Do please report problem areas (Farthing Common is one of the areas already covered by our new enforcement orders) so we can get them included too.

Jenny took photographs at J11 when it was gridlocked on so many occasions, and on one particular occasion when the Highways Agency (now renamed Highways England) closed the slip-road but were not directing traffic in any other direction, she contacted the Police and informed distraught lorry and car drivers what she had done!! The Police soon arrived!

Jenny attended the Local Government Conference in Harrogate where the Keynote speakers were Jeremy Hunt and Greg Clark. Jeremy Hunt pointed out that large sums of money could be saved in the Health Service if people turned up for appointments, there was a reduction in wastage of medicines, avoiding A & E for minor injuries and taking more responsibility for our own health. Greg Clark's overall message was devolution and invited all corners of the Country to rise to the challenge.

Susan attended Lyminge Parish Council on 29 June and on 25 June had a tour of the pirate scarecrows which formed part of the Lyminge Midsummer Festival and choose the winners. They were all worthy of prizes as they all displayed originality, creativity and wit – a true reflection of the spirit of Lyminge.

Please do contact us with any issues or concerns you may have – we like positive comments as well.

Jenny Hollingsbee (jenny.hollingsbee@shepway.gov.uk 07887918458)

Susan Carey (susan.carey@shepway.gov.uk 01303 670561) - Ward councillors for North Downs West, Shepway District Council

Etchinghill Update August 2015

SPEED WATCH

During the last session 2 – 10th July, drivers of vehicles driving through Lyminge and Etchinghill were generally sticking to the 30 mph limit, this is pleasing to note. Not so pleasing to record is that on 2 July at our site at Whitehorse Cottages in Rhodes Minnis, eleven vehicles were recorded being driven in excess of 35 mph, and two vehicles were recorded at 42 mph and 47 mph.

We could do with some more volunteers, due to this being the holiday season. If you think you would like to help please contact Colin Manvell on 86232.

ETCHINGHILL RESIDENTS' ASSOCIATION

Monday, 17th August, the Cinema Club is showing the film **"Testament Of Youth"** (12A) at the Etchinghill Village Hall, doors open at 7.00 for 7.30 pm. This drama/romance, starring Alicia Vikander and Kit Harington, is a searing story of love, war and remembrance, based on the First World War memoir by Vera Brittain, which became the classic testimony of that war from a woman's point of view. Membership is free (you may join on the night) and the entrance fee of £5.00 includes admission, refreshments and a lucky draw ticket. Film shows take place every third Monday of the month. For further information, please contact Lorraine on 01303 863333.

ETCHINGHILL VILLAGE HALL

Why not enter the Village Hall photo competition organised by the youth members of the Village Hall Committee. Only £1.00 per entry, all entries must be in by 29th August. Entry forms and instructions available at the Village Hall or from the Farmer's Market, held on Saturday 1st August.

FARMERS MARKET

Held on the first Saturday morning of the month. Many stalls to choose from and refreshments available. Last month's Raffle Prize Winner was Joyce Murray. What a lovely surprise to cheer her up after her accident.

OPEN HOUSE

A collection of food is being made for The Rainbow Centre, following their very interesting talk. Please see the list of required items before donating any goods, thank you.

We are having a "Bring and Share Lunch" on 24th August. Please see the list before deciding what to bring.

WORK PARTY

What are you doing on the weekend 18th 19th and 20th September? Can you paint a store (or two), grout a patio (or two), dig a trench for a drain, replace some block foundations, clear out a store or just clean and wash down the car park. If you can please let Rodney know on 862028.

If you would like to include an item in the *Etchinghill Update*, please contact **Barbara** on 01303 862873

theWI INSPIRING WOMEN

Barbara Syrett welcomed members to a very pleasant afternoon meeting. Birthday posies were presented to June Price, Gladys Harris, Pat Kent and Marilyn Norton. We also congratulated June and Dan Price and Rita and Laurie Warner who both celebrated their golden wedding anniversaries in July.

Patricia Marshall, accompanied by Chloe, spoke about "Life with my guide dog, Chloe". Her life had changed dramatically after losing her sight about 15 years ago and she told how Chloe came into her life as a young guide dog, with great determination, patience and hard work. It was a very moving talk of how much trust Patricia has in Chloe, a really clever, lovable dog - a most enjoyable afternoon.

The competition winner for a dog ornament was June Price. We then enjoyed a very nice tea, the hostesses being June Manton and Marilyn Norton. After the summer break, the next meeting will be on Tuesday, September 15 at 2.30pm in the village hall when Sandra Richards will speak about the humorous side of district nursing. For more information, please contact Barbara Syrett on 01303 265229 or Rita Warner on 863503

Lyminge Bowls Club

Here are the home fixtures for August, where a warm welcome will greet you if you want to come along and watch. Our bar prices are good!

Saturday 1st	A mixed team from Kearsney visit for the afternoon
Thursday 6th	The first round of the Club Pairs Competition – starting 6.00 pm
Friday 7th	Ladies Captain's day – an enjoyable day for all
Sunday 9th	Gentlemen from Wear Bay will be trying to beat our men
Tuesday 11th	Ladies from Folkestone visit our ladies
Thursday 13th	Second round of the Club Pairs Competition – starting 6.00 pm
Saturday 15th	A mixed team of Barham bowlers visits Lyminge
Sunday 16th	An all day Mixed Pairs Competition – starting at 10.00 am
Wed 19th	Ladies and Gents from St Margaret's visit us
Thursday 20th	Third round of the Club Pairs Competition – starting 6.00 pm
Saturday 22nd	We welcome ladies and gents from Minster for a rinks game
Sunday 23th	An all day Men's Pairs Competition – starting at 10.00 am
Thursday 27th	Fourth round of the Club Pairs Competition – starting 6.00 pm
Saturday 29th	Members of Springhouse Bowls Club in Essex pay us a visit
Sunday 30th	Ladies and Gents visit from Boughton to pitch a team against us.

All the above games start at 2.30 pm. All family members welcomed for the family fun day. Do come along and give bowls a try. Club members will also be found playing on the green on Wednesday afternoons and Friday evenings. If you want to have a go, come along and ask. Call 863495 for further information.



Lyminge Historical Society

Archaeology on Tayne Field during August

Gabor Thomas talk Friday 28 August
Methodist Church 7-9pm
following a scaled-down dig throughout August

There will be the usual Saturday afternoon Site Tours by Gabor Thomas throughout August, during the dig.

Help required with finds washing.

An Anglo-Saxon Open Day will take place on Tayne Field on 22nd August. Keep an eye out for posters with details.

Talks resume on **Tuesday, 1st September 2015**
THE TAYNE CENTRE at 7.30pm

A talk on

"The Goodwin Sands - "The Shippe Swallower"
Speaker: John Buss

New members and visitors are welcome.

Members: £10 per annum inclusive of talks

Visitors: £4 per person per talk, payable at the door

Tea and biscuits will be served.

Lyminge Historical Society

Mobile Tel. No. 07759 260816

Website: www.lymingehistoricalsociety.co.uk

ROUNDWOOD HALL PAY & PLAY GOLF CLUB

Behind the line of conifer hedges on Stone Street (B2068) you will find a friendly & welcoming short golf course.

9 holes - £8.00 18 holes - £12.00
£2 more at Weekends & B/H

Stone Street, Lyminge
Folkestone, CT18 8DJ
01303 862260

Fantastic new
membership
opportunities



FRIENDLY RELAXED AFFORDABLE
www.roundwoodhall.co.uk



Fun Charity Cycle Ride

Sunday 6th September
Sibton Park Cricket Club, Lyminge
£10 minimum rider donation

Start Times:

50 mile - 9:00am 25 mile - 10:00am
10 mile - 10:01am

For more information or any queries contact-

Katherine Rawlins at :

Mob: 07951 698008 email: kathstone@hotmail.com

Lyminge Weather Statistics – June 2015

With thanks to Mr D. Godden for these weather statistics and notes.

	Temperature (°C)	Air Pressure (hPa)	Wind Speed (mph)	Total Monthly Rainfall
Maximum	27.7 (30/06/15)	1030 (08-09/06/15)	33.0 SE (02/06/15)	42.5mm (1.67 in)
Minimum	5.3 (07/06/15)	1001 (07/06/15)	Highest Daily Rainfall	10.5mm (0.41in) (04/06/15)

Above average temperatures; slightly below average rainfall



Hythe Aqua Swimming Club is expanding its nationally accredited learn-to-swim programme and now has vacancies in its lessons that are held on Tuesday & Thursday evenings at Hythe Pool.

To book your place

Tel: 01303 862353 or checkout our website:

www.hytheaqua.org.uk



Park House Sanctuary Boarding Kennels & Cattery

Park House, Stelling Minnis CT4 6AN

Brick-Built Heated Kennels ~ Daily Walks

Reasonable Rates

All dogs must be fully inoculated

Heated Cat Chalets Quiet Area

Inspection Invited.

To book or for further information, call us on

01303 862622

or email lord.whisky@btinternet.com

www.lordwhisky.co.uk

SATURDAY MARKET

Tayne Centre, Church Rd, Lyminge

15th August

9am - 12noon

For all local

Gifts, Crafts, Cakes, Preserves, Books

New for this month: Video games, DVDs, CDs,

Puzzles - getting rid of the above

Call 01303 862710



Lyminge Handbell Ringers

The **Lyminge Hand Bell** group continue to introduce new music so look forward to the opportunity of playing these new pieces locally, so please consider booking us for your special celebration. You can come and hear us play before booking if you wish so you can select your own choice of music. We have an increasingly wide selection to choose from. All we need at the venue is a large table for our bells and music, room for up to 12 players and a minimum donation of £40 for our charity, the Nepali Children's Trust. A small contribution to travelling costs is also appreciated for bookings more than 5 miles from Lyminge. Weekends and evenings only please and plenty of advance notice is helpful. Want more info or make a booking?

Call **Ro Edmond** on 863201 or email wellldorm@aol.com

Coach & Horses



Senior Citizens 2 Courses Lunch

Monday - Saturday £6.95pp

Friday Theme Buffet

7th August - Mexican

14th August - Italian

21st August - Indian

28th August - Polish

Wednesday 26th August Quiz Night

Friday 28th - Sunday 30th Aug Beer & Music Festival
with Live Music, Good Food and a fine selection of
Real Ales & Cider

Bookings and Contact: 01303 862694

Rhodes Minnis Village Hall

Beetle Drive

Friday 28th August

at the Hall 7.30pm

Adults £2 – Children 50p

Teas, coffee and juice provided

There will also be a raffle

New players welcome to come and join
in this old fashioned fun evening



SIBTON PARK CC Cricket Week MONDAY 3RD AUGUST TO FRIDAY 7TH AUGUST



MONDAY	Sibton Park CC v Elham Valley CC - 2pm start
Evening	Chili Nachos and Jacket Potatoes
TUESDAY	Club 6-a-side Competition - 12pm start
	Bouncy castle and family games throughout the day
	Official sleepover night
Evening	BBQ after the game
WEDNESDAY	Breakfast for the Campers
	Sibton Park CC v Forty Club - 2pm start
Evening	Sausage and Mash
THURSDAY	Sibton Park CC v Kent League Invitational X1 - 2pm start
Evening	BBQ after the game
FRIDAY	Sibton Park CC v MCC - 11am start
Evening	Hog roast and all the trimmings
	Live Music

We extend an invitation to our local residents, please join us on match days and selected evenings and take advantage of the Club's outstanding venue, facilities and fully licensed bar. The club has won the County National Village Knock-out trophy and has progressed into the National stages with a chance to play the final at Lords!! Come and join us to support the teams on Match Days and during our Cricket Week. For further information please contact: Andy & Clare Allon 07817 751262 - aallon44@yahoo.co.uk

MUSIC ON A FRIDAY

**St Mary's And Ethelburg Church Lyminge
7th August**

FREE ENTRANCE - FREE BBQ - FREE WINE

BBQ at 7pm, music starts at 7.30pm

Listen to a new rock/folk group called **"Endless Knot"**

Plus – an Open Mic time – so bring your own music backing track, instrument and come and play/sing for us. If you would be interested in taking part in the Open Mic time, please ring Roger on 01303 6218223.

When water doesn't come out of the spout of your watering can, check it for afrog!!



THE TAYNE CENTRE

We are very grateful to all the donations from our user groups and the community to support our final push to refurbish the Clayson Hall. Grants have come from:

£20,000 Methodist London & S.E. District
£20,000 Methodist South Kent Circuit
£10,000 Veolia (subject to detailed report)
£10,000 De Haan Trust

New double glazed windows have been installed; a new acoustic and insulated ceiling will go in (w/c 14th September 2015) and, if all goes to plan, the hall re-wired, decorated and the floor repaired by the end of 2015.

We have another fund raiser to help ensure that we have sufficient funds:



**10th October
Afternoon Tea at 3.00
with the Hoskins Duo**



Listen to Dave and Maggie,
join in some songs and enjoy an afternoon tea

ELHAM CIRCLE Presents

HARP RECITAL

Given by FEDERICA MASSONE

In St Mary's Church, Elham

On Friday 25th September at 7.30pm

Wine and canapés will be served during the Interval

Tickets £10 each

To purchase tickets contact:-
Sue Keen on 01303 840263 or
Judith Ridley on 01303 840485

In aid of the Kent MS Therapy Centre
Registered charity number: 901382



"Never respond to an angry person with a fiery comeback, even if he deserves it... Don't allow his anger to become your anger. - Bohdi Sanders"



LYMINGE GARDENERS' SOCIETY



**Tuesday 18th August
COACH OUTING TO KEW GARDENS**

Explore the world's most famous botanic garden. Just 30 minutes from central London, Kew Gardens boasts breathtaking landscapes, iconic glasshouses, and a vast range of rare and beautiful plants.

Members £23.00, Non Members £28.00

Pick up 8.30am, Tayne Centre, Lyminge
Last few tickets available from Age UK Lyminge

Macmillan Coffee Morning

Earlier this year due to holidays
Friday 28th August 2015
09.00 - 11.30am
Lyminge Library.

Raffle prizes, Guess the name of the teddy, and how many sweets in the jar, Book Marker making and much more

call Teresa on 01303 862167 or email her at mdbtab@btinternet.com or ask Jane at the Library for more information or if you wish to donate or help.

Organised in aid of Macmillan Cancer Support, registered charity in England and Wales (261017), Scotland (SC039907) and the Isle of Man (604). Also operating in Northern Ireland.



**WE ARE
MACMILLAN.
CANCER SUPPORT**

ETCHINGHILL RESIDENTS' ASSOCIATION

Etchinghill Cinema Club

"TESTAMENT OF YOUTH" 12A

Monday, 17th August

Etchinghill Village Hall at 7.15pm

Entrance Fee £5 per head

includes Membership

FREE Refreshments and Raffle



Lorraine 863333 for info

LYminge O CLUB

Wednesdays
(Term-Time)

£1 Entry Fee

11 - 16's

@ Lyminge Village Hall

6:30 - 8:00pm

FYP
www.fyp.org.uk

in partnership with
Lyminge Youth Action

f

**Free
WiFi**

THE ETCHINGHILL MARKET

Saturday 1st August & 5th September

If you would like to come along to shop our various food and craft stalls, including home made jams, cakes, fresh pork. Also aromatherapy products, hand made jewelry and wood turning. Or just enjoy a bacon roll and a cup of tea.

Etchinghill Market is the place to be.

Saturday 1st August & 5th September and every first Saturday of each month from 10am
Etchinghill Village Hall

For further details contact John on 863819. Charity No. 302736

love life love Slimming World

Join a warm and friendly group near you today...

NEW for 2015!
Power up your weight loss

**NEW CONSULTANT
Lyminge**
Lyminge C of E Primary School,
Church Road.
Tuesdays 7.00pm
Call Lucie 07894 645804

visit the website to read Jess's story
slimmingworld.com

0844 897 8000 **f** **t**

**save £5
join now!**
Just £9.95 on week one
then £4.95 each week

**Slimming
WORLD**
touching hearts, changing lives

Looking for homecare services?

Our experienced Care Assistants are on hand to offer support to the elderly, people with a learning or physical disability or other care needs for home services no matter your needs -

- ✓ One call a day to multiple calls
- ✓ Short term or long term packages
- ✓ Home from hospital assistance
- ✓ General assistance or complex care
- ✓ Weekday, weekends, days, night call times



Contact your
local branch today

01303

250200

www.nurseplusuk.com

Direct Payments Accepted



LYMINGE GARDENERS' SOCIETY



LYMINGE SUMMER SHOW

Saturday 8th August, The Tayne Centre

Open to view from 2pm

A free afternoon for all the family

Over 50 classes, including: flowers, fruit, veg, cookery, photography and separate classes for children's exhibits

Teas, homemade cakes & raffle

Schedules & entry forms available from
Lyminge Post Office & Age UK Lyminge

Help and guidance for new exhibitors

BEETLE DRIVE

Postling Village Hall

Saturday 22 August
at 7pm

Adults £2 & children 50p
Refreshments and raffle



In aid of **Skillshare International** who have provided my granddaughter, Natalie Long, the opportunity to go to Botswana in September to help children who have lost their family to HIV and AIDs.

To help raise money, Natalie has already completed "The Welsh 3 Peaks Challenge", on 18 July starting at 4am, climbing the 3 peaks in a day, wearing a zebra poncho.

For more information, ring Elaine on 863096

Etchinghill Village Hall Photo Competition!!

Are you a local resident - Etchinghill, Lyminge, Rhodes Minnis and Postling?

Do you enjoy taking photographs?

Are you inspired by your local area & community?



If yes, why not enter the Etchinghill Village Hall photo competition? This is a new and fun competition organised by the youth members of the village Hall Committee, who would be grateful for your support - only £1 per category per entry!!

Entry forms and further details are available in **The Gatekeeper** and from the **Etchinghill Farmers Markets**.

All entries must be in by 29th August. Please leave entries at the Etchinghill Farmers Market or deliver them to 6 St Mary's Drive, Etchinghill. Thank you and Good Luck!

Beth, Lauren and the Village Hall Committee

In Aid of Lord Whisky Sanctuary Fund

Registered Charity: 283483.

Park House, Stelling Minnis, Kent CT4 6AN

Tel: 01303 862622 Fax: 01303 863007

www.lordwhisky.co.uk ~ lord.whisky@btinternet.com

BOOT & LATE SUMMER FAYRE

Saturday 22nd August

at Park House Animal Sanctuary

Stelling Minnis, nr Canterbury CT4 6AN

Boot Fair from 8am - cars £5.00/vans £7.50

Entertainment from 12 noon

Classic Cars and Military Vehicles Welcome

Lots of stalls ~ Tombola ~ Refreshments

Admission by donation ~ Plenty of free parking

For further details, ring 01303 862622

Lyminge Village Hall 100 CLUB RESULTS

The monthly winner of the Village Hall 100 Club was drawn
at the Coach & Horses in June 2015

The winner was Val Darnley: Ticket number 24

If you would like to join our the club then please contact
Lyminge Village Hall Committee

Rhodes Minnis Village Hall

Table Top Fair

Saturday 10th October, 10am-2pm

(Stall holders from 9am)

Tables at £5

To book, please ring 01303863660

Refreshments will be available

Elham Valley & Wye Lions Club

Please come to our Golf Day at Sene Valley course on Friday 4th September. Pairs and singles trophies; Golf+Dinner £39.50; Golf only £22.50. All profits to EV&W Lions Charitable Trust.

Also please note our next Quiz Night is at Etchinghill Village Hall on 24th October. For more details of these, please call Neil on 01303 893314 or Roger on 01233 500111.

Etchinghill Baby & Toddler Group

We are a friendly toddler group, which caters for babies and children from 0 to school age. Crafts, messy play, trikes, toys and a singing session are included each week. In dry weather there is also outside access for the children to play.

We meet on Wednesdays between 10am -12noon at Etchinghill Village Hall. We charge £2 per family, 1st session is free. Tea/coffee and healthy snacks are provided. If you have any queries please contact

Julia Tesoro 07809705309

Lyminge Baby and Toddler Group Urgently Need Your Help

As children move on to primary school, so adult support changes. The Group urgently needs more adult support for it to survive. It only takes from 10.15am to 12.15pm on a Tuesday to help run the Group.

COULD and WOULD YOU PLEASE HELP?

Please call **Elizabeth** on **07513590931** to offer your help and have any questions answered.

Rhodes Minnis Toddler Group

We are closed for the summer holidays and will return Thursday 10th September 10am-12noon

We would like to welcome new members and will be pleased to see Mums, Dads, Grandparents and Child Minders. Fee £1.50 per morning – to include refreshments. For more information phone **Elaine** on **01303 863096**



Sign to Nursery Rhyme Classes

Etchinghill Village Hall on Tuesday mornings

Come and learn to sign with your baby. Signs are taught using nursery rhymes, action songs and musical instruments.

Spaces are limited so to book your place and for more information please call

07800 737936 or go to **www.daisychaincourses.co.uk**



**Daisychain
Courses**

FOLKESTONE DISTRICT NATIONAL DANCE GROUP

Meets on Tuesdays 7.30 – 9.30 pm from late September to mid-June at

Newington Village Hall, Newington, Folkestone

to learn and enjoy folk dances from many different countries. No experience or partner necessary.

Tel: **01303 249199** or **01227 709557**



Lyminge Pre-School



**'OUTSTANDING' – in every category
Ofsted Feb 2011**

**We are now open between 8am and 6pm
ALL YEAR ROUND**

We are a well established pre-school with committed, enthusiastic and highly qualified staff passionate about providing the highest standards of childcare.

To arrange to meet the team, please call:
01303 863149 (day) or **07709420736** (eve) or email
lymingepreschool@gmail.com and visit our website
www.lymingepreschool.org.uk

SHEPWAY LIFELINE

*HELPING PEOPLE TO LIVE INDEPENDENTLY IN THEIR
OWN HOME FOR LONGER*

The service they are renowned for is the red button pendant that is worn around the neck or wrist. In an emergency, when it is pressed, it calls for emergency assistance. The Lifeline really is a life saving service and is highly valued within the community. By enabling people to live in their own homes for as long as possible, it avoids the need for expensive residential and nursing home care.

Shepway Lifeline is Telecare Services Association accredited and has an innovative 24/7 monitoring centre, supplying all facets of Telecare alarms, including care and security solutions for vulnerable individuals, lone workers and local businesses.

To contact Shepway Lifeline: -

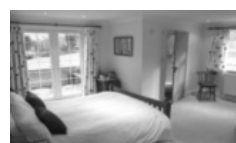
Phone: (01303) 242615 or 242971

Address: Shepway Lifeline, Civic Centre, Castle Hill
Avenue, Folkestone, CT20 2QY

Email: **lifeline.proactive@shepway.gov.uk**

Website: **www.shepway.gov.uk/lifeline**

Bridge Cottage Bed & Breakfast 4 Stars Silver Award



**Luxury accommodation in a tranquil setting
Chris & Alison, Shuttlesfield Lane, Ottinge
01303 862933**

www.bridgecottagesimplybandb.co.uk

Shuttlesfield Barn – 4 Star Gold – Self Catering

Rural location. Two bedrooms, ensuite bathroom and wetroom. Disabled facilities. Short and longer stays.



Families, dogs, horses welcome. Located on walking, cycling, riding routes. Heated outdoor pool in summer.



Info@shuttlesfieldbarn.co.uk Tel: 01303862729
www.shuttlesfieldbarn.co.uk CT18 8LB



for buses from **Lyminge Post Office** to
Folkestone Town Centre via Etchinghill & Cheriton High Street

MONDAYS TO SATURDAYS except Bank Holidays

There are route 17 buses at 0705 (not Saturdays), 0749, 0909, 0939 (not Saturdays), 1004, 1034, 1104, 1204, 1304, 1404, 1504, 1614 (1619 on schooldays), 1629 (schooldays only), 1654 (schooldays only), 1719, 1749, 1834, 1929, 2113 and 2313.

There are also route 18 buses to Sandling Station & Hythe - for times see our website or call the number below.

SUNDAYS & BANK HOLIDAYS

There are route 17 buses at 0947, 1147, 1347, 1547, 1802 and 2002.

for buses from **Lyminge (opposite Aberdeen House)** to
Canterbury City Centre via Elham, Barham & Bridge

MONDAYS TO SATURDAYS except Bank Holidays

There are route 17 buses at 0727 (schooldays only), 0732, 0752, 0903, 0938, 1028, 1128, 1228, 1328, 1443, 1613, 1703, 1803, 2001 and 2201.

There are also route 18 buses to Canterbury via Stelling Minnis and Bossingham - for times see our website or call the number below.

SUNDAYS & BANK HOLIDAYS

There are route 17 buses at 0827, 1027, 1227, 1427, 1642 and 1842.

These times will operate from 2nd November 2014.



timetable information **0871 200 22 33**

Calls cost 10p per minute plus network extras

www.stagecoachbus.com/eastkent

TAYNE CENTRE HALL HIRE

Previously known as the Lyminge Methodist Church Hall

Clayson Hall

1 October to 31 May (including heating) £9.00 per hour :
£32.00 per 4 hour session : £64.00 full day

1 June to 30 September

£6.50 per hour : £23.00 per 4 hour session : £46.00 full day

Rigden Room (Parlour) with heating, if required*

£6.50 per hour all year (*electric - over heaters).

Burren Room with heating, if required*

£5.00 per hour all year, (*electric - over heaters)

Overnight Stays

1 June to 30 September £40; 1 October to 31 May £55

For any enquiries please call **07971 722 401**



Lyminge Village Hall

Lyminge Village Hall is one of 14 Hallmark L2 accredited village halls in Kent. Consequently, we offer a safe, secure and well-managed village hall and this accommodation:

1. Committee Room, suitable for up to 12
2. Harry Storey Room, ideal for small club activities
3. The main hall, great for dances and large celebrations with bar, servery and full stage

We remain a competitive local venue ideally situated off the main road with ample parking. Examples of prices for the main hall are: Friday or Saturday evening £65.00, weekday evenings £20.00 and all day Saturday £135.00.

For full price details and room availability call **01303 863149** or email Lymingevillagehall@outlook.com

ETCHINGHILL VILLAGE HALL HIRE FEES

The next time you are thinking of holding a function you should try Etchinghill Village Hall, which holds the highest Hallmark accreditation level, with its excellent facilities, including ample parking space.

The standard hire charge for the main hall and kitchen are:

Weekdays £10.00 per hour

Saturdays £12.00 per hour

Sundays £12.00 per hour

During the winter months (1 November to 31 March) a Winter Supplement of £1.00 per hour is added to the above rates.

Special rates apply for weddings and all day events with a range of discounts on the above rates applying to all lettings of more than three continuous hours and additional discounts are available to Etchinghill Residents and Regular Hirers.

The use of a separate Committee Room is also available.

For all bookings or enquiries please contact:

Sylvia Williams on 01303 863547

Rhodes Minnis Village Hall

Charity No.800345

Rhodes Minnis Village Hall is located 2kms (1¼miles) from Lyminge and just off Longage Hill and Whitehorse Lane in Chapel Lane

The hall, which holds Hallmark accreditation, is ideal for children's parties, band practice, quizzes, meetings and fundraising events and has the capacity to take parties of up to 100. The rates include the use of the kitchen.

Rates

Mon to Fri £15 per session £40 all day

Sat & Sun £20 per session

£30 for evening session and £60 all day

Sessions

AM session 08.30 - 12.30

PM session 13.30 - 17.30

Evening session 18.00 - 23.45

There are special rates for regular users.

For all bookings and enquires please contact:

Martin Fry 01303 863177 or 07849217793 or e-mail: book@rmvh.org.uk

Sibton Park Cricket Club

We extend an invitation to our local residents, please join us on match days and selected evenings and take advantage of the Club's outstanding venue, facilities and fully licensed bar.

Having a Celebration? Require a regular venue?

The club house and grounds are available

For further information or to make a booking

please contact: Andy & Clare Allon

07817 751262 - aallon44@yahoo.co.uk

Out and About

Do you have any photos of local events or local groups in action, please call 01303 862699. Give your group a FREE plug!



A special cake produced for Alicja when the village said a sad farewell to her from the Coach & Horses



▲ **The Haywardians** in full voice at their concert at the Tayne Centre on the evening of Saturday 27th June.

Lyminge Methodist Church provided a display of flowers reflecting parables from the Bible. This display was based on the story of Noah's Ark. Special thanks go to Marilyn Norton, Christina Guyett and Denise Jacobs who arranged the flowers.



A perfect end to Thursday 25th June with **The Petanque Tournament** at Etchinghill with a beautiful sunset, refreshments and nibbles!!



Our thanks go to Councillor Susan Carey for spending quite some time in visiting and judging each of the scarecrows in our Competition. She wrote . . .
"The crew of pirate scarecrows that sailed into the parish for the Midsummer festival were a motley crew indeed. How different they all were despite the common theme. Some had a cutlass or pistol, some an eye patch, most were men but there were two female pirates As for parrots there were all manner of birds perched on shoulders from a plastic pigeon (most realistic) to owls; a particularly nice touch was the tiny tricorne pirate hat worn by the parrot at Lyminge school. I liked the lace and earrings sported by so many of the pirates and the pieces of eight, seashells and spotted handkerchiefs would have appealed to Jack Sparrow. Other original touches were a bottle of rum and a crab made of flannel. The scarecrows turned up in gardens, on fences, the garage in Etchinghill, the cafe in Lyminge, the school and there was even one in a field that might have been scaring crows. One scarecrow seemed to have everything – a pistol, a cutlass, a wooden leg, a hook, a treasure chest, a red nose, an earring... I could go on. Another stand out one was in Rhodes Minnis which was almost abstract – it looked like the mast of a ship with the furled sails serving as arms and a crows nest filled with crows. The school's pirate was also a splendid effort but I hope I've conveyed just how good they all were and their creators should all be congratulated."



Mystery Photo

Last month's picture was part of the decorative border to the eaves of Lyminge Library. How about a really easy one? Isn't it??



Lyminge Midsummer Festival

GARDEN SAFARI

Thank you to the owners of the 19 gardens for opening their gardens and to the over 200 visitors who toured the gardens.

Variety ...



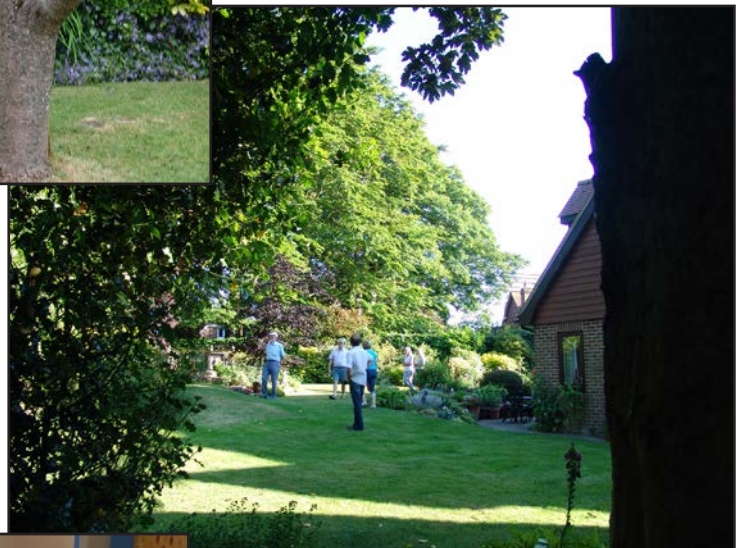
... colour ...



A special *Thank You* from Paul & Debbie Marsh who provided refreshments for visitors to their garden and raised £111.75 for the British Heart Foundation



... tranquility ...

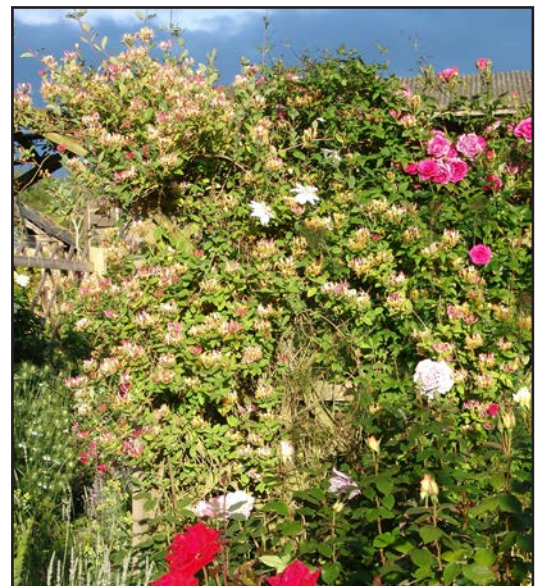


... and mature trees -
Lyminge gardens have it all !



▲ "Suffer Little Children" flower arrangement at the Lyminge Methodist Church Flower Display

A profusion of
honeysuckle ➡



This page is printed to give readers and organisers the opportunity of planning events without clashing with existing ones, which are already in the 'diary'. It is not intended as a means of advertising and we take no responsibility for errors or omissions. Acceptance is at the discretion of the editor. Please send your updates by email to pb@pbarnes20.plus.com or via methods outlined on Page 2.

Location and name codes follow:

C&H: Coach & Horses; **ECC:** Etchinghill Cricket Club; **EVH:** Etchinghill Village Hall; **ERA:** Etchinghill Residents' Association; **ES:** Elham Square; **JC:** Jubilee Centre; **JF:** Jubilee Field; **LB:** Laing Bennett; **LL:** Library; **LMC:** Lyminge Methodist Church; **LPC:** Lyminge Parish Church; **LSH:** Lyminge School Hall; **LVH:** Lyminge Village Hall; **LW:** Lord Whisky; **NP:** Nailbourne Parlour; **NVH:** Newington Village Hall; **PC:** Postling Church; **PH:** Lord Whisky, Park Hse. **PVH:** Postling Village Hall; **RVH:** Rhodes Minnis Village Hall; **RMC:** Rhodes Minnis Church; **SNL:** See News Letter for info; **TC:** Tayne Centre.

One Off or Irregular Events

Date	Time	Event	Where	Tel. No.	Date	Time	Event	Where	Tel. No.
1 August	AM	Boot Fair	ECC	07896717787	10 October	3pm	Afternoon Tea Concert	TC	
1 August	2.30pm	Rhodes Minnis Summer Flower Show	RMVH	863177	10 October	7pm	Autumn Quiz	LVH	
2 August	7.30pm	The Rude Mechanical Theatre Company	Tayne Field	LB or 862743	10 October	AM	Boot Fair	ECC	07896717787
15 August	AM	Boot Fair	ECC	07896717787	24 October		Lions Quiz Night	EVH	01303 893314
29 August	AM	Boot Fair	ECC	07896717787	31 October	7pm	Halloween Party	LVH	
4 September		Lions Charity Golf Day	Sene Valley	01303 893314	7 November		Bonfire Night	LVH	
12 September	AM	Boot Fair	ECC	07896717787	8 November	11am	Service of Remembrance	LPC	862073
13 September		Garage Safari		863537	19 November		Christmas Lights On	LB	
26 September	AM	Boot Fair	ECC	07896717787	28 November		St Nicholas Fayre	LPC	862073
4 October	11am	Harvest Festival Service	LMC	863049	2-5 December	7.30pm	"Dial M for Murder"	LVH	LB
5 October	7.30pm	Lyminge Association AGM			12 December		Haywardians Concert		
10 October	AM	Boot Fair	ECC	07896717787					

Weekly Events

Day	Time	Event	Where	Tel. No.	Day	Time	Event	Where	Tel. No.
Mon	10am	Open House	EVH	863394	Wed	6pm	Karate for Juniors	EVH	07554004526
Mon	10am	Bridge Club	BC	863177	Wed	7pm	French Conversation	KH	862972
Mon	10.30am	Lyminge Larks (Singing)	TC	01233750223	Wed	7.30pm	Cantores Domincae Choir	LSH	01233840961
Mon	11am	Cookery	JC	269602	Wed	8pm	Scottish Country Dancing	EVH	862761
Mon	2pm	Computer Buddy (need to book)	LL	862180	Thur	9.30am	Baby Rhyme Time	LL	862180
Mon	2.30pm	Monday Fellowship	TC	862164	Thur	10am	RM Toddlers Group	RVH	863096
Mon	5.45pm	Lyminge Youth Drama Group	TC	862602	Thur	10am	Art Group - Morning	TC	211364
Mon	6.30pm	Judo Club	LVH	862946	Thur	11am	Shopping trips to Supermarket	JC	269602
Tues ¹	10am	Baby & Toddler Group	TC	863274	Thur	2pm	Art Group - Afternoon	TC	862972
Tues	10am	Sign to Nursery Rhyme Classes	EVH	07800737936	Thur	6pm	Ballroom and Salsa Dancing	EVH	07967979610
Tues	10.30am	Art Class	JC	269602	Thur	6.45pm	Short Mat Bowls	LVH	863842
Tues	11.15am	Chairobics	JC	269602	Fri	10am	Talk Time	LL	862180
Tues	6pm	Football Training	JF	07967342226	Fri	11am	Seated Exercise	JC	269602
Tues	6.45pm	Short Mat Bowls	LVH	863842	Fri	5pm	Hawkinge Flyers (Lyminge Branch)	Katrina	07881457994
Wed	10.15am	Mature Movers (Exercise)	TC	862873					

Monthly Events

When	Time	Event	Where	Tel. No.	When	Time	Event	Where	Tel. No.
3 rd Mon	7.30pm	Etchinghill Cinema	EVH	863333	3 rd Wed	7.30pm	RM Evening Circle	RVH	862913
Last Mon		Parish Council Meeting	SNL	239500	4 th Wed ⁴	11am	Singing For Health	JC	862364
1 st Tues	10.30am	Reading Group	LL	862180	Last Wed	7.30pm	Quiz Night	C&H	862694
1 st Tues	11am	Reminiscence	JC	269602	4 th Fri	7.30pm	Beetle Drive	RVH	862616
1 st Tues ²	7.30pm	LHS Talk/Event	TC	862972	Last Fri	1.30pm	Team Quiz	JC	269602
3 rd Tues	9.45am	Family History	LL	862180	1 st Sat	10am	Village Market	EVH	863819
3 rd Tues	2.30pm	Etchinghill W.I.	EVH	863503	2 nd Sat	10am	Postling Ch. Coffee Morning	PC	863536
3 rd Tues ³	7.30pm	Gardening Society	TC	862264	3 rd Sat	8am	Saturday Market	TC	862164
1 st Wed	10.30am	Lyminge Friends	LMP	862598	Last Sat	11am	Poetry Group	LL	862180
2 nd Wed	10.30am	Mothers Union	NP	862221	3 rd Sun	10am	Parish Walk	Richard	862015

¹ In term time only ² Except Jan, Feb, July and August ³ Except Jan, Feb, Aug ⁴ Except Aug and Dec



**Lyminge
Country
Bakery**

01303 720126
www.lymingecountrybakery.co.uk
baker@lymingecountrybakery.co.uk

A Selection Of Our Produce

- Traditional Loaves • Low GI Bread • Sweet Products
- Mini Loaves • Artisan Bread • Baguettes
- Specialty Loaves • Savoury Products • Bakery Specials



Local Bookkeeper

Sole Trader & Small Business Accounts
VAT, Self Assessment, Payroll, CIS
& General Administration Services



Call or e-mail:

Tel: 01303 864229 Mob: 07702 321686

e-mail: tash@bestbookwork.tax

www.bestbookwork.co.uk



✂ SNIPPERS & CLIPPERS ✂ UNISEX HAIR SALON

LYMINGE SALON

Facial Waxing : Gents Welcome : Shellac Nails
Free WiFi : Appointments not always needed

01303 647222 : info@snippersandclippers.co.uk
Station Road, Lyminge, CT18 8HP

T. Metcalfe Fencing Contractors

Approved Expert Installer for Jacksons Fencing
Established over 30 years
Fully insured - Highly experienced teams



Panel fencing, gates, decking, pergolas, post & rail,
stock fencing, security, landscaping & tree surgery.

01303 840201 07790 290 155

metcalfefencing@btinternet.com
Proprietor - Derek Burr,
Ash Ridge House, Elham



KENT & SUSSEX HOLIDAY COTTAGES

With over 250 properties in this region and an expert local team, call now to book your
2015 break or to talk to one of the team about letting your property for holiday rentals.

— 01304 619 444 —

www.kentandsussexcottages.co.uk info@kentandsussexcottages.co.uk
12 King Street, Sandwich, Kent CT13 9BT

DO YOU NEED HELP IN YOUR GARDEN ?

Sean Godden can do all those jobs that take up your spare time.

Weeding - turf laying - lawn cutting/edging

Hedge/tree maintenance – waste tip runs

Fence & decking painting/treating

Brick, pathway cleaning.

TEL. 07538988914 – Email 'sgodden@hotmail.co.uk'

Essential Beauty

*reflexology : aromatherapy : collagen mask facials
non-surgical perceptor : facials : cuccio gel varnish
manicures & pedicures : waxing & eyelash/brow tinting*

Therapist with 20 years experience

Call Janene Moat 01303 840052

The Limes, High St, Elham.

Free eyebrow tidy for new clients.

Quality Cat and Dog Food from OSCAR

Free delivery to your door. Honest label, no additives
or animal derivatives. No minimum order or contract.
Expert advice available.

Call **Laurence** on **01303 777888** to
discuss your supplies and for a free
sample of cat or dog food.



SEATHWAITE BOARDING CATTERY LTD.

Supporting Rhodes Minnis Cat Sanctuary

GREEN LANE, RHODES MINNIS, CT4 6XUTEL: 01303 862243 (Registered charity 262245)

ONLY CATS BOARDED, IN QUIET COUNTRY LOCATION

Individually heated chalets. Single cat £7 per day, a reduction
for 2 or more cats. All cats boarded with us must have current
vaccinations against cat flu & feline enteritis. All profits from the
boarding cattery go to support homeless cats in the Sanctuary.

RHODES MINNIS CAT SANCTUARY

has a wide variety of cats available to caring homes.

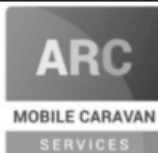
Alan Croucher Caravan Engineer

Have your Caravan, Motorhome, Horsebox or
Trailer serviced without the fuss of taking it
to a workshop.

www.arcmobilecaravanservices.com

Mobile: 07921 480919 Home: 01303 863194

*Non mechanical only on motorhomes and horseboxes



East Kent Foot Care

Mobile Foot Health Practitioner

Jo Shapter BSc (Hons), MCFHP, MAFHP

Treating and managing common foot problems,
corns, callus, verrucae, thickened nails,
toe nail management, fungal problems,
diabetic foot assessments etc.

Call: 07745 532075

Member of the British Association of Foot Health Professionals



VICTORIA'S HAIR AND BEAUTY SALON 2 Cullings Hill, Elham, CT4 6TE

MANICURES / PEDICURES / SHELLAC / MASSAGE / TINTING / TANNING / FACIALS / WAXING / HAIR / MAKE UP
WEDDING PACKAGES / PAMPER PARTIES / BESPOKE PAMPER PACKAGES / GIFT VOUCHERS

01303 840 931 / www.victoriashairandbeauty.com





Ralph Allard Chimney Sweep



All chimneys, boilers and stoves swept.
Brush and Vacuum. Certificates issued.
HETAS and NACS registered, fully insured.

Member of National Association of Chimney Sweeps

01303 844465 or 07813716654

THE CLINIC
Garden Suite
Pendragon House
4 Station Road
Lyminge
Kent CT18 8HP
01303 863359



info@theclinic-lyminge.co.uk
www.theclinic-lyminge.co.uk

REGISTERED OSTEOPATHS & MEDICAL ACUPUNCTURIST

Adam Price B.Sc Hons (Ost) Katie Price B.Sc Hons (Ost)

The Clinic 01303 863359 or mob: 07980 897382

- Treatment of lower back pain, both acute and chronic
- Treatment of tension/cervical type headaches both acute & chronic
- Treatment of various stiff & painful arthritic conditions
- Treatment of sports injuries, both soft tissue & skeletal
- Deep tissue back, neck & shoulder massage for symptomatic relief

The cost of your treatment may be recoverable from your insurers. Please check



Sunhouse Electrical

Your local reliable Electrician

Part P Registered & Elecsa Approved

Fully Insured & On Competent Persons Register

For a free quotation & advice call James on

01303 766333

www.sunhouse-electrical.com

GOSBEE CONSTRUCTION

Over 30 years experience. Jacksons Expert Installer
Reliable. Friendly. Professional

Property Maintenance
Hedge & Tree Cutting
Tarmacadam Works
Grass Cutting

Building Work
Garden Design
Landscaping
Fencing & Gates

Ponds
Patios
Driveways

For a free, no obligation quote: **07974 835511 or 01303 863337**
Visit our website: gosbeeconstruction.co.uk
E-mail us: info@gosbeeconstruction.co.uk

S R Accounting and Business Solutions LLP

"Working hand in hand with your business"

Denise Roberts, ACIS, ACMA & David Sayle

Qualified accountants with a combined experience of over 50 years. We offer business start-up advice, business planning, monthly & annual accounts, VAT & tax submissions, full payroll service, company secretarial service.

droberts@sr-accounts.co.uk

01303 862559

0751 1097707 www.sr-accounts.co.uk



MANOR
VETERINARY CLINIC

We care for them all, great and small

Lyminge Clinic: Methodist Church Hall
Mon, Wed & Fri pm

01303 273203

www.manorveterinaryclinic.co.uk

STERRY'S

*Independent
Funeral Director*

01303 272525
93 Cheriton High Street
(opp Co-op)

01303 264400
41 High Street, Hythe
(opp Lloyds Bank)

Always here for you; 24 hour service. Home visits on request.
Choice of pre-paid funeral plans

Red Dragon I.T. Ltd.



- Windows, Mac & Linux Systems
- PC Health Checks
- Wired & Wireless Networks
- Website Design
- Graphic Design

T: **01303 723456** | E: info@rdit.co.uk | www.rdit.co.uk
2 Station Road, Lyminge, Folkestone, Kent, CT18 8HP

TIME FOR HEALTH! WEIGHT LOSS CHIROPRACTIC CARE

(The easy way!)

(Humans, horses, dogs & cats)

Back pain, neck pain,
arthritis, stiffness & much more
www.backtostraight.com

BACK TO STRAIGHT
CHIROPRACTIC
...GENTLE TREATMENT FOR HUMANS, HORSES, CATS AND DOGS

Will Wright: 07905 031850/01303 863460

LYMINGE FOOD AND WINE 01303 862225



We are here to serve you
Mon. – Sun. 7:00am to 9:00pm
including Bank Holidays
National Lottery Here



South East Aerial & Satellite Solutions

Digital – Freeview – Satellite – Aerials

Supply and fit of quality digital installations, FREEVIEW, SKY, aerials, poor reception and problem solving, upgrades and repairs by fully accredited engineers

Free quotations and advice, fixed prices, fully insured

Freeview

NO CALL-OUT CHARGE

freesat

07968 659404 - 07825168010 - 01303273640

AMV

FENCING, GARDEN AND LAND MAINTENANCE

No Job Too Small – Free Quotations – Reliably and Professional Service

Fencing & Gates : Groundwork & Driveway : Patios & Block Paving : Tree Surgery & Hedges : Lawn Mowing & Garden Maintenance : Pest Control

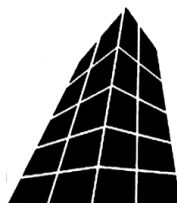
Contact: Alfie Vassar 07860216442 or amvmaintenance@hotmail.com

COUNTRY FARE

CATERING SERVICES

Country Weddings, Christenings and All Family Gatherings, Corporate Lunches, Seasonal Parties & Celebration Cakes

Sally Burr 01303 863642 07814 610995
sallycountryfare@gmail.com



Filehurst Associates

Archive, Warehousing, Logistics,
Business & Household Storage.
Domestic & Commercial removals
and storage.

01303 239990 www.filehurst.co.uk

FRESHLOOK GARDENS

Regular lawn mowing service. Garden design. Hard and soft landscaping. General garden work, fencing and decking. Turfing hedge cutting, small and medium tree work. Water features, ponds and patios.



For free quotation ring Geoffrey Hogben

01303 844 680 / 07866 091633

sales@freshlookgardens.info

www.freshlookgardens.info

Established since 1990. Fully insured.

Browns

Sales & lettings
7 days a week



Over 40 years of Kent
village and country property

Elham 01303 840422 | Hawkinge 01303 892000
www.brownscountryproperty.co.uk

LYMINGE NEWSAGENTS

11-13 STATION ROAD, LYMINGE CT18 8HS
01303862566

POST OFFICE, 'OFF LICENCE'
CONVENIENCE STORE

Dry Cleaning and Laundry, can deliver Papers
OPENING HOURS

7AM TO 10PM EVERY DAY

Local Tradesman

J Tappenden

Established 36 years

Painter/Decorator/Builder

01303 862467

077755 78008



THE DRIVING INSTRUCTOR

ROGER DOWLE

ADI QUALIFIED PATIENT & PROFESSIONAL TUITION
FOR MORE INFORMATION OR TO BOOK A LESSON PLEASE
CALL ROGER

07870939936

Introductory offer, beginners only, first five HOURS £80

Jackson Plumbing Property Maintenance

Complete bathrooms and tiling
No job too small. Special rates for OAP's.

Telephone: home/evening 01303 270691
or daytime 07773 089398 or 07864 929826

M. J. Athow

BUILDER & DECORATOR, EST. 1965
GENERAL MAINTENANCE

Qualified and Insured. Free estimates
Telephone: 862616 Mobile: 07976 306665
Email: m.j.athow@live.co.uk

SIX MILE GARAGE LTD

Stone Street, Stelling Minnis, Canterbury, Kent CT4 6DN

- Car and light commercial servicing
- Class 4 and 7 mots and repairs
- Car and light commercial accident repair centre (insurance approved)
- Diagnostics bay with latest equipment
- Tyre bay with four wheel alignment and balancing
- Air conditioning servicing

Tel. 01227 709214 or 01227 709491, Fax 01227 709331

E-mail: office@sixmilegarage.co.uk

Trevor Law

Electrical Installations



Serving Elham Valley for 30 years
Part P Registered

01303 862348

07850 970087

J. V. Services

Servicing and Repairs:

- Garden Machinery
- Ride on Mowers
- Trailers & Horseboxes
- Quad Bikes
- Classic Cars

(Free collection and delivery)

Mobile Mechanic

Serve/Repair/Full Restoration:

- Compact Tractors
- Vintage Tractors
- Classic Tractors

Mobile: 078 0300 3047

john@jvserviceskent.com

To advertise in this space, please contact the Editor (first come, first served)

£9.50 per month or £95 per annum

pb@pbarnes20.plus.com : 01303863737



DILTON MINI SKIP HIRE

Ballast, Hardcore, Sand
and Topsoil Supplied
REGISTERED WASTE CARRIER
01303 812448 or 07799 433754

'Helping you enjoy your garden'

CRT Gardening

Knowledge of general gardening, including lawn care, hedge trimming and cutting, vegetable garden work, fencing installations and repairs, small and medium size tree work and ongoing maintenance of all of them.

Heavy-duty work is also undertaken.

Free estimates; fully insured. Karl Dodd 07967442518

Email: karl.dodd@live.co.uk www.crtgardening.com

AIR LINK CARS

(You pack up, we pick up)

Airport, Seaport & Long Distance Travel Specialists.

The Family Run Business where service really counts

Estate cars and People Carriers



Fixed price 24hrs a day. No extras.

Written Confirmation of booking.

For the Easy Airport Link, Think AIR LINK!

01303 862704 - 07753 760897

WILL WOODBRIDGE

Carpenter/small works builder

With years of experience

01303 863062



Laing Bennett

PHILIP A CHAPMAN

With our excellent local knowledge, service and two local offices we will get you moving

The Estate Office 8 Station Road Lyminge Kent CT18 8HP
T 01303 863393 E lyminge@laingbennett.co.uk

134 High Street Hythe Kent CT21 5LB
T 01303 264846 E hythe@laingbennett.co.uk

www.laingbennett.co.uk

Picture Framing

All types of framing undertaken, including tapestries, cross stitch, medals & badges etc.

Can collect and deliver.

01303 863449



Claire's Country Kitchen

Join us and enjoy some of our delicious home-baked items.
Breakfasts, Light Lunches, and Snacks with a selection of
Teas or Coffees.

Open Tuesday – Saturday, 7.30am - 4.00pm

Canterbury Road, Lyminge, Kent CT18 8HU

01303 864222

SCRUBBERS - Est. 1988

THE HOME AND COMMERCIAL CLEANERS

One off, regular or moving day 'Blitz'

Oven cleaning – Ironing

Carpet cleaning and more...

For a friendly and reliable service

Free Estimates

Tel: 01303487019 or 07834128671

Dennis Huntley

Installer of wood and multi-fuel stoves & fireplaces
Heating engineer, solid fuel servicing and chimney sweep

01303 862343

07850 784365



R. B. BUILDING SERVICES

General Maintenance, Painting, Carpentry,
Plumbing, Upvc Fascias and Guttering.

Fully Insured

For a free quote please ring Roy Bowling on
Home Tel: 01303 863267 – Mobile 07947 132319



CEDAR HOME MAINTENANCE

Building Alterations
Kitchen Installations
Painting & Decorating
Plumbing
Plastering

Damp Proofing
Drainage
Carpentry
Re-pointing
Patio's

Windows & Doors
Gutters & Down Pipes
Fascia's & Soffits
Glazing
Electrical

Roofing
Fencing & Gates
Property Clearance
All Work carried out by Qualified Tradesmen (Fully insured – all areas of Kent covered)

Call Dominic: 07968197613 Office: 01303 230787

cedarhm@hotmail.co.uk and www.cedarhomemaintenance.co.uk

Environment Agency Registered (Reg/472477) Established Since 1986

HOLDEN PLASTERING

All aspects of Plastering

Smooth-over Artex - a speciality.

Coving, Tiling and Plumbing

Phone JAMES for free estimate or advice on:


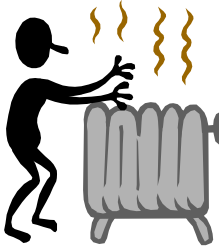
01303 770449

07773 262970

Coul-Pups Pet Care Service Fully insured, qualified and experienced member of National Association of Registered Pet Sitters (NARPS). Dog walking, 1 to 1 dog training or in class environment in association with Elham Dog Training Club. Dog grooming, cat and small pet care and house/pet sitting.

Visit: <http://coul-pups.vpweb.co.uk/> Email: coulpups@gmail.com Phone: 01303 255176 or 07542 727326

Elham Dog Training Club Lyn Fagg 01303 862820

<p>D.M.B. Plastering All aspects undertaken Interior. Exterior. Plastering. Rendering. Coving. Ceilings Wall. Floors Finest quality assured. CSCS Certified. 26 years experience. Free estimates. Reliable service. Fully insured. Call David on 07818 607209</p>	<p>P Davis + Co General Builders and Roofing Specialist All work undertaken Call for free estimate Tel: 01303 863049 or 0784 6769643</p>
<p>Personal Computing For straightforward I.T. advice, solutions and training Contact: Steve Ashman 862869 sra@ashman-consulting.co.uk</p>	<p>Piano Lessons 40 years' piano teaching experience Currently accepting new pupils from beginner to diploma standard. Theory to Grade VIII. Recreational pupils welcome Evening and some daytime slots available Pianos on rent-to-buy basis from £50 per month Kevin Bull BA (Hons.), Dip. Mus., A.L.C.M. Tel 01303 241199 :: Email: kevin@bullmusic.com</p> 
<p>Wilco Plumbing & Heating Central Heating Installations & Repairs Gas & Oil Boiler repairs & replacements 5 Year Guarantee on Worcester Bosch Boilers. Local Experienced Engineer, Emergency plumbing 24/7 call out Registered with the Institute of Plumbing Gas Safe Registered-OFTEC Registered 01303 862173 07860 452640 paul@wilcoplumbing.co.uk www.wilcoplumbing.co.uk</p>	<p>TOBY'S TREE SURGERY Thinning – Reducing – Maintenance – Felling ALL TREE WORK, BOTH PRIVATE AND COMMERCIAL, UNDERTAKEN BY OUR NPTC TRAINED OPERATIVES Professional Friendly Service FREE ESTIMATES – FULLY INSURED Contact Toby Griggs: 07854 098 395 or (01303) 863642</p>
<p>D. SCRIVENS PLUMBING & HEATING Oil Fired Boiler Installation, Commissioning, Service and Maintenance. Unvented Hot Water Systems – Solar Water Heating Central Heating – Water Softeners – Bathrooms – Showers – En suites Approved 'Aqualisa' Installer WATER INDUSTRY 'APPROVED PLUMBER' FULLY INSURED 07810 897076 scrivensplumbing@aol.com</p>	 <p>K & M LEWSEY LTD plumbing & heating engineers established 1969 Registered plumber Gas ACOP approved engineers 01303 264535 manned office daytime Monday to Friday</p>
<p>Total garden care for all your needs TIM MILLETT Grass Maintenance, General Gardening, Small & Medium Size Tree Work, Stump Grinding and Wood chipping Fencing Repairs & New Installations Turfing, Hard & Soft Landscaping Free Estimates - Fully Insured 01303 863676 07752 880583 Email: info@tmhorticulture.co.uk</p>	 <p>Respiratory Rehab Bringing health home Providing private community respiratory physiotherapy, general physiotherapy and rehabilitation to East Kent T: 07904482097 E: kris@respiratoryrehab.co.uk W: www.respiratoryrehab.co.uk Kris Bahadur. Chartered Physiotherapist. MSc Physiotherapy, BSc (Hons), MCSP, SRP</p>
<p>N.P.C. Domestic Appliance Services Service and repair of washing machines, tumble driers, dishwashers, cleaners and small electrical work. For a prompt and friendly service Call Neil Collard 01303 892234 or 07798716044 or www.npcdomesticapplianceservices.co.uk</p>	<p>Auto Economy Centre Fully equipped Mechanical Repair & Service Centre with the latest diagnostic equipment MOTs £39.95 01303 863656 Orchard Garage, Canterbury Rd, Etchinghill www.autoeconomycentre.com</p>
<p>Old English Pine Antique, repro pine, oak and French-style painted furniture with beautiful and reasonable priced accessories to make your house a home. Bespoke pine units made to order. Huge shop - over 3 floors. Open 7 days a week. Tel: 01303 248560 www.oldenglishpineinkent.co.uk 100/102 and 90 Sandgate High Street, Sandgate</p>	