

THE LYMINGE NEWSLETTER

For the communities of LYMINGE, ETCHINGHILL, RHODES MINNIS and POSTLING

<http://www.lyminge.org.uk/>

February 2015

Produced by
THE LYMINGE ASSOCIATION

News from the Lyminge Association

Garage Safari ~ Don't throw away those odds and ends when you have a New Year or Spring clear out - save them and turn them into CASH at the Garage Safari on Saturday 18th April. You can use your garage or driveway OR you can book a table at the Tayne Centre although numbers there will be limited.

Lyminge Festival

We are planning for the bi-annual Garden Safari on 27th & 28th June and as in previous years there will be other events at the same time. This year it will all be BIGGER. The Festival is to last a whole week with various events happening over eight days. Lyminge Primary School will be starting the week with their Summer Fête on Saturday 20th June. The Festival

will include a Craft Exhibition, so if you have a special craft skill that you would like to demonstrate please contact Adrian on 862699. Perhaps you do flower arranging, stained glass work, sugarcraft, card making, the list is endless and you don't have to do it professionally - we'd just love to see your craft in action. Grab the phone and let us know !

A full programme of events, including at least one concert, and the 'Passport' for the Garden Safari will be available early in June.

Court Lodge Green - the Bumpy Field

There is a special Pond Survey on the second page of the Parish Council's blue pages this month. Please take time to read and complete the Pond Survey.

Laing Bennett

INDEPENDENT ESTATE & LETTING AGENTS



PHILIP A CHAPMAN
EST 1927



With our excellent
local knowledge, service
and two local offices
we will get you moving

The Estate Office 8 Station Road
Lyminge Kent CT18 8HP
T 01303 863393
E lyminge@laingbennett.co.uk

134 High Street Hythe Kent CT21 5LB
T 01303 264846
E hythe@laingbennett.co.uk

www.laingbennett.co.uk



LYMINGE PARISH CHURCH SERVICES & ACTIVITIES

Church Website: www.lymingechurch.co.uk

E-mail: office@lymingechurch.co.uk

Sun 1st Feb	8.00am	Holy Communion (CW order 2)
	11.00am	WOW (Ways of Worship)
Wed 4th Feb	7.00pm	Holy Communion (short said 10-15 mins)
	7.30pm	Open House Bible Study & Discussion (coffee available from 7.20pm)
Sun 8th Feb	8.00am	Holy Communion (CW order 2)
	11.00am	Sung Eucharist
Wed 11th Feb	7.00pm	Holy Communion (short said 10-15 mins)
	7.30pm	Open House Bible Study & Discussion (coffee available from 7.20pm)
Sun 15th Feb	11.00am	Family Communion with Children's Corner followed by refreshments
	6.00pm	Evensong
Wed 18th Feb	ASH WEDNESDAY	
	7.30pm	Holy Communion and Imposition of Ashes (NO Open House Bible Study & Discussion)
Fri 20th Feb	12.00noon	Lent Lunch at the Tayne Centre
Sun 22nd Feb	8.00am	Holy Communion (CW order 2)
	11.00am	Sung Eucharist
N.B. there will be NO MESSY CHURCH this Sunday		
Wed 25th Feb	7.00pm	Holy Communion (short said 10-15 mins)
	7.30pm	Open House Bible Study & Discussion (coffee available from 7.20pm)
Fri 27th Feb	12.00noon	Lent Lunch at the Tayne Centre

ACTIVITIES THIS MONTH

Mothers Union

The next meeting will be on Wednesday 11th February
at 10.30am in the lounge at Nailbourne Court

Please contact Sue Rawlings 862221 if you are interested and/or need transport

Coffee Morning in Wentworth Close Lounge

Wednesday 18th February from 10.00am to 11.30am

In the lounge at Wentworth Close

(entrance via the car park)

Please contact Lynne on 863010 or Loraine on 863216

Prayer Shawl Knitting Group

Wednesday 18th February from 2.30pm at 26 Nailbourne Court

*This group meets to knit shawls for and pray for those suffering
from ill health or bereavement*

New members are always welcome

Please contact Madeline 863582

Ethelburga Luncheon Club

Thursday 19th February at 12.00 noon

at the Coach and Horses Public House

Please contact Lynne Lane – 863010

PADDLESWORTH PARISH CHURCH SERVICES

Sun 1st Feb	NO SERVICE
Sun 8th Feb	9.30am Holy Communion (CW Order 1)
Sun 15th Feb	NO SERVICE
Sun 22nd Feb	6.00pm Evensong

LYMINGE METHODIST CHURCH

Visitors are very welcome to join us at our weekly
service at **11am** and invited to share fellowship
afterwards with a cup of coffee/tea.

1st February	Mr Terry Preston
8th February	Mr Richard Blackwell
15th February	Mr Colin Pearson
22nd February	Rev Sam Funnell (incl. Holy Communion)

RHODES MINNIS CHURCH

This small Chapel in beautiful countryside holds a
weekly Sunday Service normally at 9.30am followed
by coffee and biscuits. A warm welcome is extended
to any visitors.

1st February	Mr. Terry Preston
8th February	Mr. Richard Blackwell
15th February	Rev. Robin Blount
22nd February	Rev. Sam Funnell (includes Holy Communion)

A 5-week Lent Course will be held on Thursdays
commencing 19th February at 2.30pm in the
Chapel. All are welcome.

POSTLING CHURCH SERVICES

1st February	3.30pm	Evensong
8th February	9.30am.	Family Service
15th February	8.00am	Holy Communion
22nd February	9.30am	Family Communion

L.E.T. (Lyminge Ecumenical Team)

Lyminge Churches working together

Lent Lunches at the Tayne Centre

Enjoy a lunch of soup, roll, cheese and fruit for £3.00

every Friday during Lent starting on

Friday 20th February until Friday 27th March

from 12.30 to 1.30.

All profits go to the charity "Water Aid".

Lyminge Newsletter

Terms & Conditions. Copy deadline is 18th February

Please email your copy in word.doc format to the editor
(pb@pbarnes20.plus.com). Your payment must be received before your
article or advert can appear in the Newsletter. Please leave your
payment along with your name, organisation, telephone number and
copy of your ad in a sealed envelope at the Lyminge Post Office or at
the Lyminge Library.

Business adverts cost £9.50 per month or £95.00 per year. Personal
and charity adverts and articles from £3 per month, or £30.00 per year.

The annual rate offers 12 entries for the price of 10. Please make
cheques payable to 'The Lyminge Association'. If you do not have
email, a typed paper-copy can be left with the payment.

Lyminge Association accepts no liability for the accuracy of the
advertisements or subsequent actions arising in conjunction with
advertisers in the newsletter.

Further details from Peter (editor) on 01303 863737

中CHINA城



Is Celebrating the Chinese New Year,
the year of the Sheep,
with a **LION DANCE & FIREWORKS**

18th and 19th February 2015

9:00 - 9:30 pm

Come along and join in the fun it's free to see!

Why not dine here before or after the event?

Book your table on 01303 863 288



Lyminge Dramatic Society

Join us in March for a very entertaining production of *The Ladykillers*- based on the Ealing Comedy film. We have a very strong cast, Barbara Harris is directing and it promises to be an excellent play. It is on from Wednesday 11th March until Saturday 14th March at 7.45 at Lyminge Village Hall. Tickets are £7.50 with £5 concessions on the Wednesday and Thursday nights. The tickets go on sale on Valentine's Day - February 14th- from Laing Bennett in Lyminge (telephone 01303 863393). Alternatively book online at ticketsource.co.uk our new Internet booking provider.

Have you visited our website? If not grab a coffee and visit lymingedramaticsociety.co.uk. Would you like to be part of Lyminge Dramatic Society? If so contact Alex Todd our membership secretary on 01303 862622.



Valentines Special MUSIC ON A FRIDAY



7.30pm
13th February



**ST MARY AND ETHELBURGA
CHURCH LYMINGE**

Music for everyone. Free entrance and
free BUCKS FIZZ and chocolates.

*Thank you to all who played, helped and
supported our Special Music on a Friday on
23rd January in support of the Charlotte
Charity*

Members were welcomed to the January meeting by Gill Le Cras, the Vice President who stood in for Barbara Syrett who had unfortunately fallen and injured her leg. We all send her our best wishes for a speedy recovery. Birthday posies were presented to Gill Le Cras and Chris Marshall. In December we went to the Kings Arms in Elham for our Christmas meal which was enjoyed by all.

Our speaker was Eve Muggeridge who spoke about stained glass and told us how she came to learn about the art nine years ago and how it continued from then to be very successful. She gave an in-depth demonstration from start to finish which we all found fascinating. We then enjoyed a very nice tea, the hostesses being Daphne Andrews, Anne Lloyd and Gill Le Cras.

The competition winner for an etched glass was Anne Lloyd and the winner of the flower competition was Rosemary Piddock.

The next meeting will be held on Tuesday, February 17 at 2.30pm in the village hall. This will be a social afternoon and there will be a bring and buy stall. Please contact Barbara Syrett on 01303 265229 or Rita Warner on 01303 863503 for further details.

theWI
INSPIRING WOMEN

Do you know about our 100+ Club? It raises much needed funds so that we can continue to provide all the essential services and facilities that make visits to the Centres so enjoyable. In these days of budget cuts the funds raised are even more important to us.

You can help us by becoming a member. It only costs £12.00 per year for a number and this entitles you to be included in each of the next 12 monthly draws, so every month there is a good chance of winning one of these three prizes:

Prizes	1 st	2 nd	3 rd
January to November	£25.00	£15.00	£10.00
December *Star* Prizes	£50.00	£30.00	£20.00

Payments must be made in advance and you can buy as many numbers as you wish. *Members must be 16 or over.* For more details please ask at the Centres or call Matthew on 01303 269602. Every penny raised goes directly to help older people.

We have **one Twin Room** available at **£299 per person** for the **Clients' Holiday** on 8th to 12th April 2015 to Sandown on the Isle of Wight. For more details **call Matthew on 269602 as soon as possible.**

Do you enjoy painting? Places are available on Tuesday mornings 10am to midday in our Art Group. We cater for all abilities and tuition is available if required. £2.20 including tea or coffee.

Lunches are available in the Dining Room or the Conservatory Cafe for £4.35; lunch consists of a fruit juice, main course and dessert and is followed by tea or coffee. The Menu changes daily and there is always an alternative available for specific dietary needs. We have an offer for new clients - come to Lunch and have the first one **free** (limited spaces).

In the Conservatory Café you will find **bacon rolls** on weekday mornings, between 8.30 and 11am, at £1.00 each in addition to cakes and snacks - why not enjoy one with a cup of tea or coffee?

If you have any unwanted presents, please consider donating them to be used in our raffles or sale in our Charity Shop. Thank you.

The Café and Charity Shop will open on Saturdays 9.30am to 12.30pm, weather permitting.

Diary Dates:

Communion Service, 11am, **1st Thursday**. Contact us if you need help with transport.

Bingo in Hythe, 7.30pm, **1st Thursday**.

Singing for Health in Lyminge, 11am, **4th Wednesday**

There will be another **Quiz Night** in Hythe on **Wednesday 25th February**

Call in for our new activities leaflet, which has a timetable of all our activities...

For more information about any of our activities or services please call **01303 269602** and ask for **Matthew** or **Sue** or why not just pop in and see us?



Lyminge Friends

In January we heard about *Agatha Christie* from Rosemary Piddock who was very informative as usual and afterwards we went to the Coach and Horses for a lovely Lunch.

On **Wed 4th February** we have a talk entitled **A Kick Up The Sixties** from Alan Haines which promises to be a bit different and in March we have a return visit from Derek Smith on **Wed 4th** this time to talk about *Queen Ethelburga and Lyminge*. The March meeting will be followed by a trip over to Brockhill Country Park Café for Lunch.

Meeting are 10.30 - 12.30 in the Rigden Room of the Tayne Centre. Entry is currently £2.00 and includes refreshments. We are a friendly social group and welcome new members. If you'd like to talk to one of us first, please call 863500.

Rhodes Minnis Evening Circle

Our members' Christmas party was held in December when we enjoyed a Bring & Share supper followed by a Bingo session and the exchange of Christmas presents and cards. On March 18th we look forward to Sue Watson introducing "Songs of Kent". We meet at Rhodes Minnis Village Hall at 7.30pm and will gladly welcome new members and visitors. We wish all our members and friends a happy and healthy New Year. For further details contact Jacqui (862044) or Marion (862913)



Lyminge Handbell Ringers

The Lyminge Hand Bell group continue to introduce new music so look forward to the opportunity of playing these new pieces locally, so please consider booking us for your special celebration. You can come and hear us play before booking if you wish so you can select your own choice of music. We have an increasingly wide selection to choose from. All we need at the venue is a large table for our bells and music, room for up to 12 players and a minimum donation of £40 for our charity, the Nepali Children's' Trust. A small contribution to travelling costs is also appreciated for bookings more than 5 miles from Lyminge. Weekends and evenings only please and plenty of advance notice is helpful. Want more info or make a booking? Simply call Ro Edmond on 863201 or email welldorm@aol.com

Lyminge Weather Statistics – December 2014

With thanks to Mr D. Godden for these weather statistics and notes.

	Temperature (°C)	Air Pressure (hPa)	Wind Speed (mph)	Total Monthly Rainfall
Maximum	11.9 (23/12/14)	1029 (24/12/14)	25.0 NE (29/12/14)	137.6 mm (5.46 in)
Minimum	-4.0 (28/12/14)	989 (12-13/12/14)	Highest Daily Rainfall	42.00 mm (1.65 in) (12/12/14)
Warmer than average month, bringing just a few frosts at the end of the month, with less than normal rainfall.				

Etchinghill Update February 2015

SPEEDING VEHICLES USING WESTFIELD LANE: Following a complaint and the subsequent death of a dog killed by a motorist in Westfield Lane, Etchinghill, there is clearly a problem with vehicles being driven too fast up and down the lane. Residents living in the lane are requested to be aware of pedestrians walking in the lane and ensure that they drive at a slow speed, up and down the lane. Further, should residents encounter vehicles being driven at speed, they should note the registration number of the vehicle and report this

CLlr Colin Manvell (**01303 862324**) or Gary Harrison our Community Warden (**079779 82185**)

ETCHINGHILL VILLAGE HALL

Etchinghill Village Market: The winner of the December Market raffle for a hamper was Mrs M Esdale of Folkestone. The next Village Market will be on 7th February from 10am to 12.30pm. Do come and have a cup of coffee and a bacon butty whilst you are deciding what to buy.

Open House is held at Etchinghill Village Hall every Monday morning from 10am to 12noon. Everyone is welcome to come along for a coffee and a chat. The speaker on Monday 9th February is John Wilson from the Rainbow Centre. There will be a luncheon at "The Duke of Cumberland" pub at Barham on Monday 23rd February (owned by the group who will be taking over "The New Inn"). Please contact Wendy, Edna or Barbara for more information. The diary of speakers is being finalized and will be available soon.

Short Mat Bowls sessions have just started at Etchinghill Village Hall Mondays 7 - 9 pm. Tony Williams has started this new activity for all ages with a view to making this a permanent event in our calendar provided that there is sufficient interest. Contact Tony Williams (**01303 863547/07528 231935**) for further details or just turn up on these evenings.

ETCHINGHILL RESIDENTS' ASSOCIATION

ERA Cinema Club at Etchinghill Village Hall on 16th February. This month's film is "GONE GIRL" C18, a mystery thriller starring Ben Affleck and Rosamund Pike. The doors open at 7.00pm for 7.30pm screening, so make sure you get there early for a good seat and some refreshments. The entrance fee of £5.00 includes admission, refreshments and a lucky draw ticket. For more information contact Lorraine on **01303 863333**

THE GOOD NEIGHBOUR SCHEME in Etchinghill has volunteers waiting for your call. If you are housebound; feel lonely and would just like company or a chat please call Lorna on our new number: **07934 160454**. All volunteers are DBS checked and trained. The service is free and confidential. Further information is available on our website. Have you visited our website www.etchinghill.org?

If you have anything that you would like included in the Etchinghill Update for the future please contact Barbara **01303 862873**.

Park House Sanctuary Boarding Kennels & Cattery

Park House, Stelling Minnis CT4 6AN

Brick-Built Heated Kennels Daily Walks

Reasonable Rates

All dogs must be fully inoculated

Heated Cat Chalets Quiet Area

Inspection Invited. To book or for further information, call us on

01303 862622

or email lord.whisky@btinternet.com

www.lordwhisky.co.uk

New Season's Hay

Traditional small bales

Best quality – barn stored

£3.50 each

FREE local delivery for 10+ bales

Call Richard: 01303 840733

or 07970 804466



Grimsacre Farm, Elham
www.grimsacrefarm.co.uk



Hythe Aqua Swimming Club is expanding its nationally accredited learn-to-swim programme and now has vacancies in its lessons that are held on Tuesday & Thursday evenings at Hythe Pool.

To book your place

Tel: 01303 862353 or checkout our website:

www.hytheaqua.org.uk

Coach & Horses



Senior Citizens 2 Courses Lunch

Monday - Saturday £6.95pp

Friday Food Theme Nights

6th February - Mexican

13th February - Italian

20th February - Indian

27th February - Polish

14th February – Valentine's Night

3 courses - £15.95pp

25th February – Quiz Night

28th February – Blakeys – Live music from 9pm

Bookings and Contact: 01303 862694

Piano Lessons

40 years' piano teaching experience

Currently accepting new pupils from beginner to diploma standard. Theory to Grade VIII. Recreational pupils welcome

Evening and some daytime slots available
Pianos on rent-to-buy basis from £50 per month

Kevin Bull BA (Hons.), Dip. Mus., A.L.C.M.

Tel 01303 241199

Email: kevin@bullmusic.com

Rhodes Minnis Village Hall

Beetle Drive

Friday 27th February

at the Hall 7.30pm

Adults £2 – Children 50p



Teas, coffee and juice provided

There will also be a raffle

New players welcome to come and join in this old fashioned fun evening



For Sale



Mixed Seasoned Logs

Barn Stored

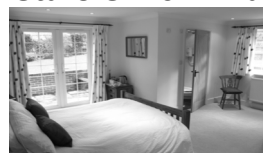
Large Truck Load - Free delivery

Still Only £70 per truck load

Call 01227 709562 or 07772698899 to book delivery

Tree surgery/stump grinding undertaken

Bridge Cottage Bed & Breakfast 4 Stars Silver Award



Luxury accommodation in a tranquil setting
Chris & Alison, Shuttlesfield Lane, Ottinge
01303 862933

www.bridgecottagesimplybandb.co.uk



As part of our final funding raising push please support this year's events:

Kent Police Male Voice Choir

Saturday 11th April

Methodist Church

7.30 pm

Tickets £6

Advance booking: 863 049

THE TAYNE CENTRE

2015 - the year of the 'Hall refurbishment'

NB: Pub Quiz Coach & Horses

Saturday 7th February

Sorry - postponed

ELHAM VALLEY AND WYE LIONS CLUB

CHARITY QUIZ

Etchinghill Village Hall

Sat 7th March, 7 for 7.30pm

Max. Tables of 8

£5 per person

Bring your own food, bar provided.

In aid of our Charity Trust fund,
for local good causes.

Call Chris Hills on 0794 174 4711 to book.

THE ETCHINGHILL MARKET REMEMBER THE "SEVENS"

Saturday 7th February
and 7th March

IF YOU WOULD LIKE TO COME ALONG TO
SHOP OUR VARIOUS STALLS, OR JUST
ENJOY A BACON ROLL AND A CUP OF TEA,
WE WILL BE BACK!

Saturday 7th February and 7th March from
10am. Etchinghill Village Hall.

For further details contact John on 863819. Charity No, 302736.



PRIVATE TUITION



Are you looking for some support
with your *homework or lessons*?

☐ 15 years experience

☐ Up to G.C.S.E. in Maths

☐ Up to A Level in Chemistry,
Physics and French

Qualifications:

☐ Master of Science (Hons)

☐ Post graduate certificate in
secondary education

Contact me on : chrperrier@hotmail.fr (Elham)

SATURDAY MARKET

resumes

21st MARCH

Church Rd, Lyminge

9am - 12noon

For all local produce

CAKES CRAFTS



CANTORES - Your local choir

Charity no. 1087409

DATES FOR YOUR DIARY 2015

Saturday 14th March 10.20 for 11 am
CONCERT OF EUROPEAN CHORAL MUSIC

Folkestone United Reformed Church

Tickets £5 inc refreshment

Box Office: Laing Bennett, or on the door

Saturday 4th July 7.00 pm

PROM CONCERT

Lyminge Village Hall

Saturday 7th November

CONCERT

Details to be advised

Look out for further information on these
and other events

Quiz Night
Book now...
tables
will go fast!!!



21st February 7pm

Etchinghill Village Hall

Tables of 6 or 8, £3.00 per head

In aid of Alongside Africa, a local charity that
supports disadvantaged and marginalised
communities in Uganda.

Raffle / craft display and sales

To reserve your table call 01303 863 599

or 07974 073 736

www.alongsideafrica.org

SHORT MAT BOWLS – ANYONE??

Would anyone like to set up a SHORT MAT BOWLS club in the village? Etchinghill Village Hall has a full set of short mat bowls including bowls mat, 16 woods, circular base, jack and storage bag.

For information about booking the hall contact Sylvia Williams 01303 863547



In Aid of

Lord Whisky Sanctuary Fund

Registered Charity: 283483. Park House, Stelling Minnis, Kent CT4 6AN Tel: 01303 862622 Fax: 01303 863007
www.lordwhisky.co.uk ~ lord.whisky@btinternet.com

Fur, Feather & Exotic Exhibition

Saturday 28th February - 10am to 4pm

Boughton-under-Blean Village Hall, Nr Faversham
Come and meet some unusual and exotic species and have a chat with the experts.

Small Animal Pet Show (no cats or dogs)

To be judged by Peter Williams MBE

Craft Stalls ~ Tombolas

Hot & Cold Refreshments

Tables available £10, phone 01303 862622 to book

New Animal Exhibitors Welcome

Please come and support us and help the animals.

Clock Repairs

Carried out by qualified Swiss watchmaker

Free estimates

Collection and delivery service

Contact **Josef** on **01303 862814**



love life
love
Slimming World

Join a warm and friendly group near you today...

NEW for 2015!
Power up your weight loss

NEW CONSULTANT
Lyminge
Lyminge C of E Primary School,
Church Road.
Tuesdays 7.00pm
Call Lucie 07894 645804

visit the website to read Jess's story
slimmingworld.com

0844 897 8000

save £5 join now!
Just £9.95 on week one then £4.95 each week

Slimming WORLD
touching hearts, changing lives

"We must develop and maintain the capacity to forgive. He who is devoid of the power to forgive is devoid of the power to love. There is some good in the worst of us and some evil in the best of us. When we discover this, we are less prone to hate our enemies."

– **Martin Luther King, Jr.**

Looking for homecare services?

Our experienced Care Assistants are on hand to offer support to the elderly, people with a learning or physical disability or other care needs for home services no matter your needs -

- ✓ One call a day to multiple calls
- ✓ Short term or long term packages
- ✓ Home from hospital assistance
- ✓ General assistance or complex care
- ✓ Weekday, weekends, days, night call times



Contact your local branch today

01303

250200

www.nurseplusuk.com



Direct Payments Accepted

ETCHINGHILL RESIDENTS' ASSOCIATION

Etchinghill Cinema Club FILM SHOW

"GONE GIRL" 18

Monday, 16th February

Etchinghill Village Hall at 7.15pm

Entrance Fee £5 per head

includes Membership

FREE Refreshments and Raffle



Lorraine 863333 for info



Lyminge Pre-School



'OUTSTANDING' - in every category
Ofsted Feb 2011

We are now open between 8am and 6pm
ALL YEAR ROUND

We are a well established pre-school with committed, enthusiastic and highly qualified staff passionate about providing the highest standards of childcare.

To arrange to meet the team, please call:
01303 863149 (day) or 07709420736 (eve).

Alternatively, email lymingepreschool@gmail.com and visit our website www.lymingepreschool.org.uk

Lyminge Baby and Toddler Group

Calling all parents, grandparents or carers with children under school age at a loose end on Tuesday mornings. We meet every week during term time; at the Tayne Centre in Lyminge between 10.00am - 12noon to give the children a chance to play and interact with others the same age.

We offer a wide range of craft and play activities, including trikes, bikes and slides to painting books and jigsaws.

We charge £1.50 per session (1st session free), which includes 'half time' refreshments for adults and children.

SHEPWAY LIFELINE

HELPING PEOPLE TO LIVE INDEPENDENTLY IN THEIR OWN HOME FOR LONGER

The service they are renowned for is the red button pendant that is worn around the neck or wrist. In an emergency, when it is pressed, it calls for emergency assistance. The Lifeline really is a life saving service and is highly valued within the community. By enabling people to live in their own homes for as long as possible, it avoids the need for expensive residential and nursing home care.

Shepway Lifeline is Telecare Services Association accredited and has an innovative 24/7 monitoring centre, supplying all facets of Telecare alarms, including care and security solutions for vulnerable individuals, lone workers and local businesses.

To contact Shepway Lifeline: -

Phone - (01303) 242615 or 242971

Address - Shepway Lifeline, Civic Centre, Castle Hill Avenue, Folkestone, CT20 2QY

Email - lifeline.proactive@shepway.gov.uk

Website - www.shepway.gov.uk/lifeline

Shuttlesfield Barn – 4 Star Gold – Self Catering

Rural location. Two bedrooms, ensuite shower and wetroom. Disabled facilities. Short and longer stays.



Families, dogs, horses welcome. Located on walking, cycling, riding routes. Heated outdoor pool in summer.



Info@shuttlesfieldbarn.co.uk Tel:01303862729

Rhodes Minnis Toddler Group



We are a friendly group who meet at Rhodes Minnis Village Hall on Thursday mornings 10am-12noon.

For Mums, Dads, Grandparents and Minders to come and enjoy a chat over a cup of tea or coffee while your child/children play. Cost £1.50 per morning – first morning free. New members very welcome. For more information phone Elaine on 01303 863096



Lyminge Historical Society

**You are invited to the new season of talks,
commencing Tuesday, 3rd March 2015
7.30pm at the Tayne Centre**

**Soldiers of the First World War
Speaker: Rosemary Piddock**

**We look forward to welcoming you back
after a break in January and February**

New members and visitors are welcome.
Refreshments will be served.

Lyminge Historical Society
Mobile Tel. No. 07759 260816

FOLKESTONE DISTRICT NATIONAL DANCE GROUP

Meets on **Tuesdays** 7.30 – 9.30 pm from late September to mid-June at **Newington Village Hall**, Newington, Folkestone, to learn and enjoy folk dances from many different countries. No experience or partner necessary.

Tel: 01303 249199 or 01227 709557

Weather Summary for 2014

	TEMPERATURE CELSIUS		BAROMETER millibars		RAIN mm		WIND- m/h
	LOW	HIGH	LOW	HIGH	DAY	MONTH	GUST
JANUARY	-03.2	11.7	976	1012	30.6	388.5	SE 49
FEBRUARY	1.0	11.6	968	999	34.0	223.0	SW 52
MARCH	-0.7	21.0	968	1018	14.5	44.5	SW 21
APRIL	-0.9	22.8	997	1014	31.5	108.5	SW 17
MAY	-1.6	26.6	987	1022	18.0	97.0	NW 24
JUNE	4.1	28.2	990	1012	44.0	116.5	SW 22
JULY	5.4	33.2	997	1025	36.0	149.0	N 32
AUGUST	5.7	28.1	989	1010	51.0	197.3	E 42
SEPTEMBER	6.5	27.1	997	1017	10.0	25.7	SE 20.7
OCTOBER	4.9	22.6	985	1019	32.0	202.4	SE 32
NOVEMBER	-1.5	17.4	997	1017	28.0	202.6	NW 38
DECEMBER	-4.0	11.9	989	1029	42.0	137.6	NE 25

Overall warmest year for about 100 years. Lyminge was less than a degree below the temperature records for England held by Gravesend. The wettest year for same period. Overall a year that drove gardens plants crazy.

Elham Valley Twinning Association (EVTA)

The Elham Valley Twinning Association (EVTA) has members from all the villages in the Elham Valley from Bridge to Lyminge (and even out to Herne Bay, Hawkinge and Folkestone), so if you are interested in making friends in France or just enjoying social events with others throughout the valley, why not join?

Our French twins live in a group of villages in the famous wine-growing region of Beaujolais, north of Lyons, and the annual weekend visits alternate between the two countries. We visited Beaujolais last September and the French will be over here this coming September. It is certainly not necessary to be able to speak French to enjoy these exchanges, and indeed some of the most successful encounters have been conducted exclusively in sign language and "franglais", often hilariously! Between visits, we have an active programme of social events, ranging from film and quiz evenings, treasure hunts and more recently to a particularly funny Murder Mystery evening modeled on 'Allo 'Allo, complete with wacky costumes and dodgy accents! So if any of this appeals to you, why not give it a try?

To find out more, visit our website, www.evta.org.uk, or contact the membership secretary, Pauline Davis (01303 840367). Membership costs only £10 for the full year.

Beating the Winter Blues...

from **NHS South Kent Coast Clinical Commissioning Group (CCG)**

For many people, this time of year can bring unhappiness into focus. January can often seem dark and dreary, and such a time can serve to compound an existing low mood. Depression has a variety of symptoms, including sadness, hopelessness and low moods that can last for a long time. Other symptoms can include, but are not restricted to: getting little or even no enjoyment from life, particularly from things that you used to enjoy, lack of motivation, even for small everyday tasks such as housework, low self-esteem and feelings of worthlessness, feeling anxious, irregular sleeping patterns.; this can involve sleeping too much or too little or waking up too early and then failing to get back to sleep. Poor memory and difficulty in concentration, a change in appetite that can result in weight loss or weight gain, limited interest in friends, family or work, low libido with loss of interest in sex.

Not everyone exhibits the same symptoms, but there is a pattern. And depression can vary, with people may feel low at different times of the day. It can also present physical symptoms such as minor aches and pains.

Dr Joe Chaudhuri (CCG's clinical lead for mental health) said: "If anyone is experiencing depression, they shouldn't have to suffer in silence. Help is always available, and talking therapies are particularly effective in tackling depression and anxiety. Men are often reluctant to talk about their problems, but by making that positive step, you can change your life for the better. It's unrealistic for all of us to be happy all of the time, and low moods are part of the human experience. But depression is an illness and needs to be treated."

The Live It Well website www.liveitwell.org.uk has details of a range of information, services and activities near you that can help beat depression, including Kent County Council's Six Ways to Wellbeing campaign which gives practical ways to improve your mental wellbeing and has lots of ideas and activities which residents, employers and work colleagues can share and use.

The 24-hour Mental Health Matters Helpline offers confidential emotional advice and support: ring 0800 107 0160. Or you can visit your GP. People with depression or anxiety may benefit from talking therapies. You can speak to your GP about this or refer yourself.

Details of NHS counselling and therapy services available in your area are on the [Health Help Now](http://HealthHelpNow.org.uk) website.



bus times

for buses from **Lyminge Post Office** to
Folkestone Town Centre via Etchinghill & Cheriton High Street

MONDAYS TO SATURDAYS except Bank Holidays

There are route 17 buses at 0705 (not Saturdays), 0749, 0909, 0939 (not Saturdays), 1004, 1034, 1104, 1204, 1304, 1404, 1504, 1614 (1619 on schooldays), 1629 (schooldays only), 1654 (schooldays only), 1719, 1749, 1834, 1929, 2113 and 2313.

There are also route 18 buses to Sandling Station & Hythe - for times see our website or call the number below.

SUNDAYS & BANK HOLIDAYS

There are route 17 buses at 0947, 1147, 1347, 1547, 1802 and 2002.

for buses from **Lyminge (opposite Aberdeen House)** to
Canterbury City Centre via Elham, Barham & Bridge

MONDAYS TO SATURDAYS except Bank Holidays

There are route 17 buses at 0727 (schooldays only), 0732, 0752, 0903, 0938, 1028, 1128, 1228, 1328, 1443, 1613, 1703, 1803, 2001 and 2201.

There are also route 18 buses to Canterbury via Stelling Minnis and Bossingham - for times see our website or call the number below.

SUNDAYS & BANK HOLIDAYS

There are route 17 buses at 0827, 1027, 1227, 1427, 1642 and 1842.

These times will operate from 2nd November 2014.

timetable information **0871 200 22 33**

Calls cost 10p per minute plus network extras

www.stagecoachbus.com/eastkent



Stagecoach
greener smarter travel

TAYNE CENTRE Hall HIRE

Previously known as the
Lyminge Methodist Church Hall



Clayson Hall

1 October to 31 May (including heating) £9.00 per hour

:£32.00 per 4 hour session :£64.00 full day

1 June to 30 September

£6.50 per hour :£23.00 per 4 hour session :£46.00 full day

Rigden Room (Parlour) with heating, if required*

£6.50 per hour all year (*electric - over heaters).

Burren Room with heating, if required*

£5.00 per hour all year, (*electric - over heaters)

Overnight Stays

1 June to 30 September £40; 1 October to 31 May £55

For any enquiries please call **07971 722 401**

Lyminge Village Hall

Lyminge Village Hall is one of 14 **Hallmark L2** accredited village halls in Kent. Consequently, we offer a safe, secure and well-managed village hall and this accommodation:

1. **Committee Room**, suitable for up to 12
2. **Harry Storey Room**, ideal for small club activities
3. **The main hall**, great for dances and large celebrations with bar, servery and full stage

We remain a competitive local venue ideally situated off the main road with ample parking. Examples of prices for the main hall are:

Friday or Saturday evening £65.00, weekday evenings £20.00 and all day Saturday

£135.00. **For full price details and room**

availability call our booking secretary, Sam Cunningham on 863256

ETCHINGHILL VILLAGE HALL HIRE FEES

The next time you are thinking of holding a function you should try Etchinghill Village Hall, which holds the highest Hallmark accreditation level, with its excellent facilities, including ample parking space.

The standard hire charge for the main hall and kitchen are:

Weekdays £10.00 per hour

Saturdays £12.00 per hour

Sundays £12.00 per hour

During the winter months (1 November to 31 March) a Winter Supplement of £1.00 per hour is added to the above rates.

Special rates apply for weddings and all day events with a range of discounts on the above rates applying to all lettings of more than three continuous hours and additional discounts are available to Etchinghill Residents and Regular Hirers.

The use of a separate Committee Room is also available.

For all bookings or enquiries please contact:

Sylvia Williams on 01303 863547

Rhodes Minnis Village Hall

Charity No.800345

Rhodes Minnis Village Hall is located 2kms (1¼miles) from Lyminge and just off Longage Hill and Whitehorse Lane in Chapel Lane

The hall, which holds Hallmark accreditation, is ideal for children's parties, band practice, quizzes, meetings and fundraising events and has the capacity to take parties of up to 100. The rates include the use of the kitchen.

Rates

Mon to Fri £15 per session £40 all day

Sat & Sun £20 per session

£30 for evening session and £60 all day

Sessions

AM session 08.30 - 12.30

PM session 13.30 - 17.30

Evening session 18.00 - 23.45

There are special rates for regular users.

For all bookings and enquires please contact:

Martin Fry 01303 863177 or 07849217793 or e-mail:
book @rmvh.org.uk

Sibton Park Cricket Club Pavilion

Having a party? Need a local venue?
Why not take advantage of Sibton Park Cricket Club's lovely pavilion?

We have a bar with club price drinks & friendly efficient staff.

There is capacity for up to 100 guests. For further information or to make a booking please

Contact Lesley Kirk, Tel: 01303 862366

EVENT PLANNER

This page is printed to give readers and organisers the opportunity of planning events without clashing with existing ones, which are already in the 'diary'. It is not intended as a means of advertising and we take no responsibility for errors or omissions. Acceptance is at the discretion of the editor. Please send your updates by email to pb@pbarnes20.plus.com or via methods outlined on Page 2. Location and name codes follow:

C&H: Coach & Horses; **ECC:** Etchinghill Cricket Club; **EVH:** Etchinghill Village Hall; **ERA:** Etchinghill Residents' Association; **ES:** Elham Square; **JC:** Jubilee Centre; **JF:** Jubilee Field; **LB:** Laing Bennett; **LL:** Library; **LMC:** Lyminge Methodist Church; **LPC:** Lyminge Parish Church; **LSH:** Lyminge School Hall; **LVH:** Lyminge Village Hall; **LW:** Lord Whisky; **NP:** Nailbourne Parlour; **NVH:** Newington Village Hall; **PC:** Postling Church; **PH:** Lord Whisky, Park Hse. **PVH:** Postling Village Hall; **RVH:** Rhodes Minnis Village Hall; **RMC:** Rhodes Minnis Church; **SNL:** See News Letter for info; **TC:** Tayne Centre.

ONE OFF or IRREGULAR EVENTS					ONE OFF or IRREGULAR EVENTS				
Date	Time	Event	Where	Tel. No.	Date	Time	Event	Where	Tel. No.
7 February	Postponed	Tayne Centre Pub Quiz	C&H	863049	27 June		Haywardians Summer Concert	LMC	863049
13 February	7.30pm	Music on Friday	LPC		27/28 June		Garden Safari		
21 February	7pm	Alongside Africa Quiz	EVH	863599	4 July	7pm	Cantores Prom	LVH	863992
7 March	7pm	Elham Valley Lions Quiz	EVH	862837	11 July		Junior Quiz Night	LVH	
11 April	7.30pm	Kent Police Male Voice Choir	LMC	863049	13 September		Garage Safari		
18 April		Garage Safari			10 October	7pm	Autumn Quiz	LVH	
18 April	7pm	Spring Fever Quiz	LVH		31 October		Halloween Party	LVH	
9 May		Lyminge Day	LVH		7 November		Bonfire Night	LVH	
13 June	7pm	Summer Quiz	LVH		12 December		Haywardians Christmas Concert	LMC	863049
20 th June		Lyminge School Fete			12 December		Junior Quiz Night	LVH	
20 June	10am	Craft Show	LVH						

WEEKLY EVENTS					WEEKLY EVENTS				
Day	Time	Event	Where	Tel. No.	Day	Time	Event	Where	Tel. No.
Mon	10:00am	Open House	EVH	863394	Wed	10:15am	Mature Movers (Exercise)	TC	862873
Mon	10.00am	Bridge Club	BC	863177	Wed	6pm	Karate for Juniors	EVH	07554004526
Mon	10.30am	Lyminge Larks (Singing)	TC	01233 750223	Wed	7:00pm	French Conversation Grp.	KH	862972
Mon	11am	Cookery	JC	01303 269602	Wed	7:30pm	Cantores Dominae Choir	LSH	01233 840961
Mon	2:30pm	Monday Fellowship	TC	862164	Wed	8:00pm	Scottish Country Dancing	EVH	862761
Mon	5.45pm	Lyminge Youth Theatre	TC	862602	Thu	10:00am	RM Toddler Group	RVH	863096
Mon	6.30pm	Judo Club	LVH	862946	Thu	10:00am	Art Group – Morning	TC	211364
Tue ¹	10.00am	Baby and Toddler Group	TC	863274	Thu	11am	Shopping Trips to Local Supermarkets	JC	01303 269602
Tue	10.30am	Art Class	JC	01303 269602	Thu	2:00pm	Art Group – Afternoon	TC	862972
Tue	11.15am	Chairobics	JC	01303 269602	Thu	6.00pm	Ballroom & Salsa Dancing	EVH	07967979610
Tue	6pm	Football Training	JF	07967342226	Thu	6.45pm	Short Mat Bowls	LVH	862293
Tue	6.45pm	Short Mat Bowls	LVH	862293	Fri	11am	Seated Exercise	JC	01303 269602

MONTHLY EVENTS					MONTHLY EVENTS				
When	Time	Event	Where	Tel. No.	Day	Time	Event	Where	Tel. No.
3 rd Mon	7.30pm	Etchinghill Cinema	EVH	863333	4 th Fri	7:30pm	Beetle Drive	RVH	862616
Last Mon		Parish Council Meeting	SNL		4 th Wed ⁴	11am	Singing for Health	JC	862364
1 st Tues	11am	Reminiscence	JC	01303 269602	Last Fri	1.30pm	Team Quiz	JC	269602
1 st Tues ²	7:30pm	LHS Talk/Event	TC	862972	1 st Sat	10:00am	Village Market	EVH	863819
3 rd Tues	2:30pm	Etchinghill W.I.	EVH	863503	2 nd Sat	10:00am	Postling Ch. Coffee Morn.	PC	863536
3 rd Tues ³	7.30pm	Gardening Society	TC	862264	3 rd Sat	8:00am	Saturday Market	TC	862164
1 st Wed	10:30am	Lyminge Friends	LMP	862598	3 rd Sun	10.00am	Parish Walk	Richard	862015
2 nd Wed	10:30am	Mothers' Union	NP	862221					
3 rd Wed	7:30pm	RM Evening Circle	RVH	862913					
Last Wed	7:30pm	Quiz Night	C&H	862694					

¹ In term time only ² Except Jan, Feb, July and August ³ Except Jan, Feb, Aug ⁴ Except Aug and Dec

Out and About

Do you have any photos of local events or local groups in action, please call 01303 862699. Give your group a FREE plug !



◀ **The Railway Swing Band** came to Lyminge Village Hall once again for their Christmas Concert on Wednesday 10th December. It was great to have a big band live here in Lyminge. A great evening was enjoyed by all with a wide range of pieces played by this very professional group of musicians.

2015 Calendar

By popular demand Lyminge Post Office have a small supply of the highly collectable Lyminge 2015 Calendar ! But only a few are left !



▲ **Lyminge Friends** starting the New Year in a gastronomic way with a celebratory meal at The Coach & Horses

LYMINGE DAY 2015 9th MAY

**New ideas wanted ! * Update your Village Event * New Stalls
Raise money for your group ! * Themed around "The Hobbit"**

Let us know how you could improve our Fun Day

Please contact us to register your interest . . .

hansonemma66@icloud.com OR call 01303 863237

Mystery Photo

Last month's photo was a view down the slide situated on Well Field. What about this one ? A bit easier than the last footpath sign picture !!



Some of Judith Lansdell's stained glass work at **Lyminge Library** during one of the Talk Time meetings at the Library just before Christmas.



Lyminge Country Bakery
Member of National Association of MASTER BAKERS
01303 720034
baker@lymingecountrybakery.co.uk
www.lymingecountrybakery.co.uk

Products we provide
We have a wide range of speciality loaves available - Try our best seller, Spelt & Honey.

Do you have a sweet tooth?
We have wonderful selection of cakes, pies & sweet pastries.

Do you have a special occasion coming up?
Place your order with us and let us cater for you

Something for lunch?
Lyminge Country Bakery has a variety of freshly made sandwiches, pies, pastries, fruit drinks and crisps in store.

Baking for Kent



Local Bookkeeper

Sole Trader & Small Business Accounts
VAT, Self Assessment, Payroll, CIS
& General Administration Services

Call or e-mail:
Tel: 01303 864229 Mob: 07702 321686
e-mail: tash@bestbookwork.tax
www.bestbookwork.co.uk



Graphic Design,
Web Design,
Brochures & Flyers,
Logo Design,
Exhibitions & Posters,
Web Banners & Icons,
Paper Engineering,
Illustration...

01303 812848

Essential Beauty

reflexology : aromatherapy : collagen mask facials
non-surgical perfector : facials : cuccio gel varnish
manicures & pedicures : waxing & eyelash/brow tinting

Therapist with 20 years experience
Call Janene Moat 01303 840052
The Limes, High St, Elham.
Free eyebrow tidy for new clients.

Alan Croucher Caravan Engineer

Have your Caravan, Motorhome, Horsebox or Trailer serviced without the fuss of taking it to a workshop.

www.arcmobilecaravanservices.com

Mobile: 07921 480919 Home: 01303 863194

*Non mechanical only on motorhomes and horseboxes



SEATHWAITE BOARDING CATTERY LTD.

Supporting Rhodes Minnis Cat Sanctuary
GREEN LANE, RHODES MINNIS, CT4 6XU
TEL: 01303 862243 (Registered charity 262245)

ONLY CATS BOARDED, IN QUIET COUNTRY LOCATION
Individually heated chalets. Single cat £6 per day, a reduction for 2 or more cats. All cats boarded with us must have current vaccinations against cat flu & feline enteritis. All profits from the boarding cattery go to support homeless cats in the Sanctuary.

RHODES MINNIS CAT SANCTUARY

has a wide variety of cats available to caring homes.

Quality Cat and Dog Food from OSCAR

Free delivery to your door. Honest label, no additives or animal derivatives. No minimum order or contract. Expert advice available. Call **Laurence** on **01303 777888** to discuss your supplies and for a free sample of cat or dog food.



East Kent Foot Care

Mobile Foot Health Practitioner

Jo Shapter BSc (Hons), MCFHP, MAFHP

Treating and managing common foot problems, corns, callus, verrucae, thickened nails, toe nail management, fungal problems, diabetic foot assessments etc.

Call: 07745 532075

Member of the British Association of Foot Health Professionals



Thank you, from....

... Paul Marsh, Mount Pleasant Close

The Christmas lights switch on was a great success. It was very well attended and we collected over £175 on the night! We left the collection box out over the Christmas period and had to empty it frequently, the total amount collected was £420. This has been splits between the British Heart Foundation and the M S Society.

We would like to thank all of the villagers who gave so generously and a big thank you to the residents of Mount Pleasant Close for their efforts in making the event a huge success - it looks like being an annual event now!!

... Ros Sheppard, Alkham

Bev Sheppard - A big thank you from myself and my family to all who sent messages of condolence and recently attended the service at St Mary's, Elham. He will be sorely missed by us all but is at peace now after a long struggle.

COUNTRY FARE

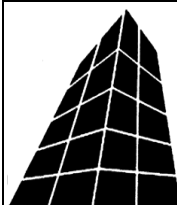
CATERING SERVICES

Country Weddings, Christenings and All Family Gatherings, Corporate Lunches, Seasonal Parties & Celebration Cakes

Contact: Sally Burr Telephone: 01303 863642

Mobile: 07814 610995

Email: sallycountryfare@gmail.com



Filehurst Associates

Archive, Warehousing, Logistics, Business & Household Storage.

Domestic & Commercial removals and storage.

01303 239990 www.filehurst.co.uk



FRESHLOOK GARDENS

Regular lawn mowing service.

Garden design. Hard and soft landscaping. General garden work, fencing and decking. Turfing hedge cutting, small and medium tree work.

Water features, ponds and patios.

For free quotation ring Geoffrey Hogben

01303 844 680 / 07866 091633

sales@freshlookgardens.info

www.freshlookgardens.info

Established since 1990. Fully insured.

Browns

Sales & lettings
7 days a week



Over 40 years of Kent village and country property

Elham 01303 840422 | Hawkinge 01303 892000
www.brownscountryproperty.co.uk

LYMINGE NEWSAGENTS

11-13 STATION ROAD, LYMINGE CT18 8HS
01303862566

**POST OFFICE, 'OFF LICENCE' and
CONVENIENCE STORE**

Dry Cleaning and Laundry, can deliver Papers

NEW OPENING HOURS

7AM TO 10PM EVERY DAY



Local Tradesman

J Tappenden

Established 36 years

Painter/Decorator/Builder

Tel 01303 862467

Mob: 077755 78008

'Helping you enjoy your garden'

CRT Gardening

Knowledge of general gardening, including lawn care, hedge trimming and cutting, vegetable garden work, fencing installations and repairs, small and medium size tree work and ongoing maintenance of all of them.

Heavy-duty work is also undertaken.

Free estimates; fully insured. Karl Dodd 07967442518

Email: karl.dodd@live.co.uk www.crtgardening.com

Jackson Plumbing

Property Maintenance

Complete bathrooms and tiling

No job too small. Special rates for OAP's.

Telephone: home/evening 01303 270691

or daytime 07773 089398 or 07864 929826

(please note new mobile numbers)

BEAVER BUILDERS

Jon Daughters

Conversions	Driveways	Plastering
Roofing	Patios	Decorating
Carpentry	Drains	Plumbing

FREE ESTIMATES

Tel: 01303 863371

SIX MILE GARAGE LTD

Stone Street, Stelling Minnis, Canterbury, Kent CT4 6DN

- Car and light commercial servicing
- Class 4 and 7 mots and repairs
- Car and light commercial accident repair centre (insurance approved)
- Diagnostics bay with latest equipment
- Tyre bay with four wheel alignment and balancing
- Air conditioning servicing

Tel. 01227 709214 or 01227 709491, Fax 01227 709331

E-mail: office@sixmilegarage.co.uk

Trevor Law

Electrical Installations

Serving Elham Valley for 30 years

Part P Registered

Telephone: 01303 862348

07850 970087

J. V. Services

Mobile Mechanic

Servicing and Repairs:

- Garden Machinery
- Ride on Mowers
- Trailers & Horseboxes
- Quad Bikes
- Classic Cars

Serve/Repair/Full Restoration:

- Compact Tractors
- Vintage Tractors
- Classic Tractors

Mobile: 078 0300 3047

john@jvserviceskent.com

(Free collection and delivery)

DILTON

MINI SKIP HIRE

Ballast, Hardcore, Sand and Topsoil Supplied

REGISTERED WASTE CARRIER

Telephone: 812448 or

Mobile 07799 433754

M. J. Athow

BUILDER & DECORATOR, EST. 1965

GENERAL MAINTENANCE

Qualified and Insured. Free estimates

Telephone: 862616 Mobile: 07976 306665

Email: m.j.athow@live.co.uk

Website: <http://mjathow.spaces.live.com>

AIR LINK CARS

(You pack up, we pick up)

Airport, Seaport & Long Distance Travel Specialists.
The Family Run Business where service really counts

Estate cars and People Carriers
Fixed price 24hrs a day. No extras.

Written Confirmation of booking.

For the Easy Airport Link, Think Air link!

01303 862704 - 07753 760897



WILL WOODBRIDGE

Carpenter/small works builder

With years of experience

Telephone 01303 863062

Picture Framing

All types of framing undertaken, including
tapestries, cross stitch, medals & badges etc.

Can collect and deliver.

Phone Lyminge (01303) 863449



Laing Bennett
INDEPENDENT ESTATE & LETTING AGENTS

PHILIP A CHAPMAN

With our excellent local knowledge, service
and two local offices we will get you moving

The Estate Office 8 Station Road Lyminge Kent CT18 8HP
T 01303 863393 E lyminge@laingbennett.co.uk

134 High Street Hythe Kent CT21 5LB
T 01303 264846 E hythe@laingbennett.co.uk

www.laingbennett.co.uk

Claire's Country Kitchen



Join us and enjoy some of our delicious home-baked items,
Breakfasts, Light Lunches, and Snacks with a selection
of Teas or Coffees.

Open Tuesday – Saturday, 7.30am to 4.00pm
Canterbury Road, Lyminge, Kent CT18 8HU
01303 864222

SCRUBBERS - Est. 1988

THE HOME AND COMMERCIAL CLEANERS

One off, regular or moving day 'Blitz'

Oven cleaning – Ironing

Carpet cleaning and more...

For a friendly and reliable service

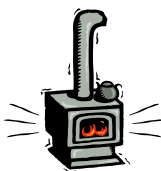
Free Estimates Tel: 01303487019 or 07834128671

Dennis Huntley

Installer of wood and multi-fuel stoves & fireplaces
Heating engineer, solid fuel servicing and
chimney sweep

01303 862343

07850 784365



R. B. BUILDING SERVICES

General Maintenance, Painting, Carpentry,
Plumbing, Upvc Fascias and Guttering.

Fully Insured

For a free quote please ring Roy Bowling on

Home Tel: 01303 863267 – Mobile 07947 132319

HYPNOTHERAPIST

For help with anxiety, weight loss, smoking cessation,
stress, fears, self esteem, exam nerves, relationship
issues and much more. **Julie** is a member of British
Association of Therapeutic Hypnotherapists, with
much experience and proven results. To discuss in
confidence and book an appointment contact her on
07773502399.

HOLDEN PLASTERING

All aspects of Plastering
Smooth-over Artex - a speciality.
Coving, Tiling and Plumbing

Phone JAMES for free estimate or advice on:

Tel: 01303 770449

Mobile: 07773 262970

D.M.B. Plastering

All aspects undertaken

Interior. Exterior. Plastering. Rendering.

Coving. Ceilings Wall. Floors

Finest quality assured. CSCS Certified.

26 years experience.

Free estimates. Reliable service. Fully insured.

Call David on 07818 607209

P Davis + Co

General Builders and Roofing Specialist

All work undertaken

Call for free estimate

Tel: 01303 863049 or 0784 6769643

Personal Computing

For straightforward I.T. advice, solutions and training

Contact:

Steve Ashman

862869

sra@ashman-consulting.co.uk

Lyminge
Country
Barn

We are still Open!
Down the alley in
the Barn

Monday to Friday

9am till noon

Saturday 9am - till 1pm

Products We Provide

Equine Food & Supplement

Wild & Domestic Bird Seed

Dog & Cat Food

Sheep Goat & Chicken Feed &

Supplements

Pest Control Products

Plus Many Other Items For Country

Living

01303 720034

Wilco Plumbing & Heating

Central Heating Installations & Repairs

Gas & Oil Boiler repairs & replacements

5 Year Guarantee on Worcester Bosch Boilers.

Local Experienced Engineer, Emergency plumbing 24/7 call out

Registered with the Institute of Plumbing

Gas Safe Registered-OFTEC Registered

01303 862173 07860 452640

paul@wilcoplumbing.co.uk

www.wilcoplumbing.co.uk

TOBY'S TREE SURGERY

Thinning – Reducing – Maintenance – Felling

ALL TREE WORK, BOTH PRIVATE AND COMMERCIAL,
UNDERTAKEN BY OUR NPTC TRAINED OPERATIVES

Professional Friendly Service

FREE ESTIMATES - FULLY INSURED

Contact Toby Griggs: **07854 098 395**

or (01303) 863642



D. SCRIVENS

PLUMBING & HEATING

Oil Fired Boiler Installation,

Commissioning, Service and Maintenance.

Unvented Hot Water Systems – Solar Water Heating

Central Heating – Water Softeners – Bathrooms – Showers – En suites

Approved 'Aqualisa' Installer

WATER INDUSTRY 'APPROVED PLUMBER'

FULLY INSURED

Mobile: 07810 897076

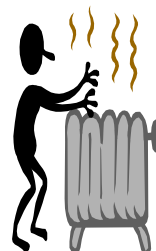
Email: scrivensplumbing@aol.com



City & Guilds
Qualified



Registered
Business



K & M LEWSEY LTD

PLUMBING & HEATING ENGINEERS

ESTABLISHED 1969

REGISTERED PLUMBER

GAS ACOP APPROVED ENGINEERS

TELEPHONE: 01303 264535

MANNED OFFICE,
DAYTIME MONDAY TO FRIDAY

Total garden care for all your needs

TIM MILLETT

Grass Maintenance, General Gardening, Small & Medium

Size Tree Work, Stump Grinding and Wood chipping

Fencing Repairs & New Installations

Turfing, Hard & Soft Landscaping

Free Estimates - Fully Insured

01303 863676

Mob: 07752 880583

Email: info@tmhorticulture.co.uk

To Advertise in this space, please call me, Peter Barnes

01303863737 or email pb@pbarnes20.plus.com

£9.50 per month or £95 per annum

N.P.C.

Domestic Appliance Services

*Service and repair of washing machines, tumble driers,
dishwashers, cleaners and small electrical work. For a
prompt and friendly service*

Call Neil Collard 01303 892234 or 07798716044

or www.npcdomesticapplianceservices.co.uk

Auto Economy Centre

**Fully equipped Mechanical Repair & Service Centre
with the latest diagnostic equipment.**

MOTs £39.95

01303 863656

Orchard Garage, Canterbury Rd, Etchinghill

www.autoeconomycentre.com

Ralph Allard Chimney Sweep

Brush and Vacuum. All chimneys, boilers and stoves swept. Certificates issued.

HETAS and NACS registered, fully insured.

Member of National Association of Chimney Sweeps

Tel: 01303 844465 or 07813716654



REGISTERED OSTEOPATHS & MEDICAL ACUPUNCTURIST

Adam Price B.Sc Hons (Ost) Katie Price B.Sc Hons (Ost)

The Clinic 01303 863359 or mob: 07980 897382

- Treatment of lower back pain, both acute and chronic
 - Treatment of tension/cervical type headaches both acute & chronic
 - Treatment of various stiff & painful arthritic conditions
 - Treatment of sports injuries, both soft tissue & skeletal
 - Deep tissue back, neck & shoulder massage for symptomatic relief
- The cost of your treatment may be recoverable from your insurers. Please check

THE CLINIC

Garden Suite
Pendragon House
4 Station Road
Lyninge
Kent CT18 8HP
01303 863359

info@theclinic-lyminge.co.uk
www.theclinic-lyminge.co.uk

THE CLINIC
Lyninge
podiatry & osteopathy

Formerly Wholisticworks Clinic



Your local reliable Electrician

Part P Registered & Elecsa Approved

Fully Insured & On Competent Persons Register

For a free quotation & advice call James on

01303 766333

www.sunhouse-electrical.com

GOSBEE CONSTRUCTION

Over 30 years experience. Jacksons Expert Installer
Reliable. Friendly. Professional

Property Maintenance
Hedge & Tree Cutting
Tarmacadam Works
Grass Cutting

Building Work
Garden Design
Landscaping
Fencing & Gates

Ponds
Patios
Driveways

Call us for a free, no obligation quote : 07974 835511 or 01303 86333

Visit our website: gosbeeconstruction.co.uk

E-mail us: info@gosbeeconstruction.co.uk

S R Accounting and Business Solutions LLP

"Working hand in hand with your business"

Denise Roberts, ACIS, ACMA & David Sayle

Qualified accountants with a combined experience of over 50 years.
We offer business start-up advice, business planning, monthly & annual accounts, VAT & tax submissions, full payroll service, company secretarial service.

E-mail: droberts@sr-accounts.co.uk

Telephone: 01303 862559

Mobile: 0751 1097707 Web: www.sr-accounts.co.uk

MANOR VETERINARY CLINIC



We care for
them all great
and small

Lyninge Clinic: Methodist Church Hall - Mon, Wed & Fri pm

Tel: 01303 273203

www.manorveterinaryclinic.co.uk

STERRY'S

*Independent
Funeral Director*

272525

93 Cheriton High Street
(opp Co-op)

264400

41 High St, Hythe
(opp Lloyds Bank)

Always here for you; 24 hour service. Home visits on request. Choice of pre-paid funeral plans

TIME FOR HEALTH!

WEIGHT LOSS

(The easy way!)

CHIROPRACTIC CARE

(Humans, horses, dogs & cats)

Back pain, neck pain,
arthritis, stiffness & much more

www.backtostraight.com



Tel Will Wright: 07905 031850/01303 863460



Red Dragon I.T. & Red Dragon Web Design



Business Support



PC Health Checks



VoIP Phone Systems



Windows, Mac & Linux Systems



Wired & Wireless Networks



Server Installation



Graphic Design



Website Checks



CMS



Business Identity



Intranets



Databases

T: 01303 723456 E: thestudio@rdit.co.uk | www.rdit.co.uk

2 Station Road, Lyninge, Folkestone, Kent, CT18 8HP

LYMINGE FOOD AND WINE

01303 862225

We are here to serve you

Mon. – Sun. 7:00am to 9:00pm

including Bank Holidays

National Lottery Here



Email: pb@pbarnes20.plus.com

Coul-Pups Pet Care Service

Fully insured, qualified and experienced member of National Association of Registered Pet Sitters (NARPS).

Dog walking, 1 to 1 dog training or in class environment in association with Elham Dog Training Club.

Dog grooming, cat and small pet care.

Visit: <http://coul-pups.vpweb.co.uk/>

Email: coulpups@gmail.com

Phone: 01303 255176 or 07542 727326

Elham Dog Training Club 01303 862820

Advertising? Contact: 01303 863737