

# THE LYMINGE NEWSLETTER

For the communities of LYMINGE, ETCHINGHILL, RHODES MINNIS and POSTLING

<http://www.lyminge.org.uk/>

**July 2015**

Produced by  
**THE LYMINGE ASSOCIATION**



## **The Rude Mechanical Theatre Company The Comedy of Babi Babbett**

Summer outdoor theatre  
**Tayne Field**

**Sunday 2nd August at 7.30pm**

The Rudes bring their outdoor theatre, comedy, mayhem and live music to Lyminge on Sunday 2nd August. The Comedy of Babi Babbett is set in

Islington in 1793 and is an out and out farce in the classic commedia dell'arte style and probably the funniest of all our plays.

*"Rich men are very attractive. There's nothing so romantic as the creak in the moonlight of a chequebook opening."*

Miserly widower, Sydney Lean, receives some sausages by mistake from Philomila Taureaumerde, the wife of a hard up doctor. He assumes them to be a proclamation of her affection, so he writes her a love poem. He leaves the task of delivering it to his incompetent servant Babi who, of course, fails to give it to her. In the meantime the charlatan Captain Guarderobe, an apparent hero of the French Revolution, is attempting to seduce both Philomila and Lean's daughter, Isabella. Taureaumerde finds out and all roads lead to The Golden Cockerel Chocolate House.

Tickets are now available from Laing Bennett or Mike Chisnall (01303 862743)



## **COUNTRY FARE CATERING**

### **Outside Catering and Celebration Cakes**

Weddings, family parties, children's birthdays, corporate and contract catering, event planning and equipment hire

Individually tailored menus - freshly prepared and home cooked food

**Sally Burr 01303 863642 or 07814 610995**

**[sallycountryfare@gmail.com](mailto:sallycountryfare@gmail.com)**



## LYMINGE PARISH CHURCH SERVICES & ACTIVITIES

Church Website: [www.lymingechurch.co.uk](http://www.lymingechurch.co.uk)

E-mail: [office@lymingechurch.co.uk](mailto:office@lymingechurch.co.uk)

- Wed 1<sup>st</sup> July**     **7.00pm Holy Communion (said)**  
*(celebrating 25 years of Peter's priesting)*
- Sun 5<sup>th</sup> July**     **8.00am Holy Communion**  
**11.00am WOW (Ways of Worship)**
- Wed 8<sup>th</sup> July**     **NO Holy Communion**  
**NO Open House Bible Discussion**
- Sun 12<sup>th</sup> July**     **8.00am Holy Communion**  
**11.00am Sung Eucharist**
- Wed 15<sup>th</sup> July**     **NO Holy Communion**  
**NO Open House Bible Discussion**
- Sun 19<sup>th</sup> July**     **11.00am Family Service with Children's Corner**  
**6.00pm Evensong**
- Wed 22<sup>nd</sup> July**     **NO Holy Communion**  
**NO Open House Bible Discussion**
- Sun 26<sup>th</sup> July**     **8.00am Holy Communion**  
**11.00am Sung Eucharist**  
**N.B. NO Messy Church this month**
- Wed 29<sup>th</sup> July**     **NO Holy Communion**  
**NO Open House Bible Discussion**

### ACTIVITIES THIS MONTH

#### **Mothers Union**

The next meeting will be on Wednesday 8<sup>th</sup> July which will be an afternoon outing with cream tea meeting at 2.00pm at Nailbourne Court

*Please contact Sue Rawlings 862221 if you are interested and/or need transport*

#### **Coffee Morning in Wentworth Close Lounge**

Wednesday 15<sup>th</sup> July from 10.00am to 11.30am  
In the lounge at Wentworth Close  
(entrance via the car park)

*Please contact Lynne on 863010 or Lorraine on 863216*

#### **Prayer Shawl Knitting Group**

Wednesday 15<sup>th</sup> July from 2.30pm at 26 Nailbourne Court

*This group meets to pray and knit shawls for those suffering from ill health or bereavement*

New members are always welcome

*Please contact Madelaine 863582*

#### **Ethelburga Luncheon Club**

Thursday 16<sup>th</sup> July meeting at 12.00 noon  
at the Coach and Horses

*Please contact Lynne 863010 if you are interested and/or need transport*

## PADDLESWORTH PARISH CHURCH SERVICES

- Sun 5<sup>th</sup> July**     **NO SERVICE**
- Sun 12<sup>th</sup> July**     **9.30am Morning Prayer**
- Sun 19<sup>th</sup> July**     **NO SERVICE**
- Sun 26<sup>th</sup> July**     **6.00pm Evensong**

*"Humility is not thinking less of yourself, it's thinking of yourself less." — Rick Warren*

## LYMINGE METHODIST CHURCH

Visitors are very welcome to join us at our weekly service at **11am** and invited to share fellowship afterwards with a cup of coffee/tea.

- 5 July** - Mr Richard Blackwall
- 12 July** - Mrs Joy Brumwell
- 19 July** - Mr Dudley Shipton (incl Holy Communion)
- 26 July** - Rev Derek Hancock
- 2 Aug** - Mr Colin Pearson

## RHODES MINNIS CHURCH

This small Chapel in beautiful countryside holds a weekly Sunday Service normally at 9.30am followed by coffee and biscuits. A warm welcome is extended to any visitors.

- 5 July** - Local arrangement
- 12 July** - Mrs Val Redding
- 19 July** - NO service at Rhodes Minnis but the congregation will be joining in a Valley service at Lyminge Methodist church at 11am
- 26 July** - Mr. Terry Preston
- 2 Aug** - Rev Kevin Taylor (inc Holy Communion)

## POSTLING CHURCH SERVICES

- 5 July** - 6pm     Evensong
- 12 July** - 9.30am     Family Service
- 19 July** - 8am     Holy Communion
- 26 July** - 9.30am     Family Communion

## CHRISTIANS IN LYMINGE

You are all invited to join us at any of the following events

- 18th July**     Saturday Market at the Tayne Centre
- 7th Aug**     Music on Friday & BBQ 7pm at the Parish Church
- 15th Aug**     Saturday Market at the Tayne Centre. and coming up,
- 5th Oct**     Harvest Festival in the Methodist Church

## Lyminge Newsletter

**Terms & Conditions. Copy deadline is 18th July**

Please email your copy in to the editor ([pb@pbarnes20.plus.com](mailto:pb@pbarnes20.plus.com)). Your payment must be received before your article or advert can appear in the Newsletter. Please leave your payment along with your name, organisation, telephone number and copy of your ad in a sealed envelope at the Lyminge Post Office or at the Lyminge Library. Business adverts cost £9.50 per month or £95.00 per year. Personal and charity adverts and articles from £3 per month, or £30.00 per year. The annual rate offers 12 entries for the price of 10. Please make cheques payable to '**The Lyminge Association**'. If you do not have email, a typed paper-copy can be left with the payment.

Lyminge Association accepts no liability for the accuracy of the advertisements or subsequent actions arising in conjunction with advertisers in the newsletter.

**Further details from Peter (editor) on 01303 863737**

# News from The Lyminge Association

Our **A.G.M** this year is to be held on Monday 5th October - the venue is still to be confirmed. Please put the date in your diary and come along - wherever it is ! - and help us all to keep our village the special place where we all want to live by making suggestions as what we could do to make it even better !

## Lyminge Midsummer Festival

Thank you to all those groups and individuals who helped to organise the week of special events for the Festival and of course to all those people who came and supported those events.

**Special Event Summer 2016 !** What ideas do you have ? A Fun Day for the villages ? A Cart Race ? - remember the Queen's Diamond Jubilee.  
Send your ideas to the Editor - [pb@pbarnes20.plus.com](mailto:pb@pbarnes20.plus.com) OR call Adrian on 862699

**Scarecrow Competition** ~ There were three winners. We did not have a First, Second and Third, but just three Winners ! They were, in no particular order, The Griggs Family of Longage Hill, Charlie Gay and family of Stelling Minnis and Class 6 of Lyminge Primary School. Our thanks go to Councillor Susan Carey

who gave up two hours to go round and study each scarecrow. The standard was superb and they all had something different and showed great imagination. Well done to everyone !



Preparing the wooden sticks at the **Scarecrow Workshop** at the beginning of June. Special thanks to Helen Burr for all her guidance and wisdom !

**Photos of the winning scarecrows will be in August's edition of the Newsletter.**

**St Ethelburga's Well** 'fully dressed' after the Lyminge Rainbows and Brownies efforts. More pictures on page 15.



## Cleaner wanted for Lyminge Village Hall

Please contact  
Steve Cunningham for full details  
07824 596923

## Lyminge Art Groups....

....wish to express grateful thanks to the Lyminge Association for their generous support in facilitating our Art Exhibition during the Lyminge Midsummer Festival.

**Thank You!**

## LYMINGE BOWLS CLUB

Invite You To

### A Family Fun Day

12th July commencing 2.30pm

If you are aged 10 to 90 this is for you!

Have A Go At Bowling!

Fun for all, only requirements is to wear flat soled shoes. Under 18's to be accompanied by an adult. Roll ups, target practice, hit the jack and fun bowling games  
**Come And Give It A Try**  
**Tea And Biscuits Provided**

## An Evening of Holiday Fun



poetry, prose and song

**ELHAM VILLAGE HALL**

**SATURDAY 11th JULY**

at 8.00pm (doors open from 7.45pm)

Bring your own picnic, wine, etc.

*(to complete the Good Child Nursery School in the Gambia)*

**Tickets £7 each** available from:

Laing Bennett - Estate Agents of Lyminge  
and Browns - Estate Agents of Elham





### **News from Age UK Lyminge...**

All the fun of the Summer Fair on Friday 17th July from 9am to 12pm - tombola, raffle, hand-made cards, white elephant and refreshments. We would be grateful for any contributions for stalls and prizes and we look forward to welcoming you into our centre in Everist Court.

Everist Court is the hub of all our activity – a shop, drop-in café, day centre and activity sessions including singing, cooking, art, seated exercise, shopping trips, quizzes and games. But this is only the tip of our service iceberg - we also provide meals, household jobs and information for people in their own homes. Our aim is to provide all the support a person needs to live well in their own home. People can “pick and mix” as much or as little as they want. We have a considerable degree of flexibility and, thanks to our great team of volunteers, we can give a genuinely personalised service. It is this “added value” which makes our services very special. Give us a ring and start using our services tomorrow!

There are still some places on our autumn coach holiday to Blackpool. The coach will pick up from Everist Court on Monday 26th October and return on Friday 30th October. We will be staying at a hotel on Blackpool promenade with bed, breakfast, dinner and evening entertainment. Daytime excursions will take us to Oswaldtwistle Mills, afternoon tea at Blackpool Tower Ballroom and a tour of the famous Illuminations. The holiday costs £299 per person or £319 for a sea view (twin/double rooms).

For more information about any of our events or services please call 01303 269602 or email [co@ageukhl.org.uk](mailto:co@ageukhl.org.uk).

Full information available at [www.ageuk.org.uk/hytheandlyminge](http://www.ageuk.org.uk/hytheandlyminge) and you can find us on Facebook

(AgeUKHytheAndLyminge) and Twitter (@ageukhl)

Come and say hello in person – we are at Everist Court, Station Rd, Lyminge, CT18 8HQ

### ***Rhodes Minnis Evening Circle***

The June meeting was chaired by Diana Bennett who welcomed members and the speaker, Sarah Grazebrook. Sarah entitled her talk “The Shadow of the Lamp” which referred to the valuable part Florence Nightingale played in the Crimean War with the troops.

The competition for a medical item was won by Ronnie Mozley with Molly Walker in second place.

Arrangements were made for the forthcoming trip to Lathe Barn at Burmarsh for lunch. The next meeting is on Wednesday, July 15 when Stuart Kenny will speak on search and rescue dogs. Everyone will be welcome, visitors are £2.50 which includes tea/coffee and biscuits. If you wish further information, please contact Diana on 01303 862134



### ***Lyminge Dramatic Society***

Our Hythe Venetian float is under construction, we have people ready to dress up and showcase our wonderful costumes from our costume store and two strong fellows to pole our float. We are very excited about this new venture and hope you will come and support us on August 19th in Hythe.

Our reading to cast Hitchcock's **Dial M for Murder** is on **July 15th**. If you would like to come along and read for a part join us at 7.30 at Sibton Park Cricket Pavilion. We are putting this on in early December and rehearsals will start in September.

Our membership Secretary Alex Todd would be delighted to hear from anyone wanting to join the Society. His number is 01303 862622. If you would like to learn more about our society visit our website [lymingedramaticsociety.co.uk](http://lymingedramaticsociety.co.uk)



### ***Lyminge Friends***

In June, we had an entertaining talk from Wendy Fraser, A Tour Guide in Venice and on Wed 17th we had a lovely Cream Tea outing to the Lord Whisky Tearooms in Rhodes Minnis.

On Wed 1st July, we have Chris McCooey giving his talk entitled Scandals - Sensational, Salacious and Sad and on Wed 15th it's our annual Garden Party. Meet at 2.30pm in Fran and Rod's garden.

On Wed 5th August we have a return visit from John and Jane Buss to talk on Jane Austin in Kent.

Meeting are 10.30 - 12.30 in the Rigden Room of the Tayne Centre. Entry is currently £2.00 and includes refreshments.

We are a friendly social group and welcome new members. If you'd like to talk to one of us first, please call 863500

## District Councillor Report - July 2015

Over the next four years we intend to report to you about the work of Shepway District Council as well as local issues that come our way and we'd like to make a start by telling you about the priorities the new administration has agreed.

Our top priority for Shepway as a whole is to grow the economy and help create more high skilled and well paid jobs. Our other priorities are to build more homes (in the right places), to keep our district looking its best and to involve our community in how we do all this. To help involve our community all district councillors will have a 'ward plan' and they are being briefed on this so that they can then work with their parish councils and local groups on establishing local priorities for each ward. There will be grants available to support the ward plans and more importantly we hope to get people working together on shared objectives.

For information, Jenny has been appointed Deputy Leader with Cabinet responsibility for Communities (including Health & Wellbeing). She is also the Shepway representative on a number of outside bodies e.g. Age UK Lyminge and the Boulogne Shepway Co-operation Group. She has also been asked to serve on the Development Control Committee which is an area she knows well having served on the Committee for over 16 years and Chairman for 4.

Susan has been appointed Cabinet Member for Finance and has already been hard at work on papers for Shepway's audit committee and responding to the Government's review on business rates.

Susan has been to several village events in the last month – 'opening' the new bus shelter outside the Post Office with Lyminge Parish Councillor Richard Chubb on 16 May, helping with one of the village litter-picks on 23 May and helping clear the Nailbourne of weeds on 30 May. The litter-picks and the Nailbourne clearance were also supported by Giles Barnard who looks after community volunteering for Shepway District Council. Giles has a large collection of the right equipment for these jobs and is happy to provide it to anyone who wants to help keep a public area looking good. Giles was very struck by just how clean the area around the Coach and Horses is kept. There are usually a lot of fag ends and other litter around a pub but not in Lyminge and that shows just how well the local pub is kept.

Jenny has dealt with several planning enquiries and a tree preservation order.

Please do contact us with any issues or concerns you may have – we like positive comments as well.

**Jenny Hollingsbee** (jenny.hollingsbee@shepway.gov.uk 07887918458)

**Susan Carey** (susan.carey@shepway.gov.uk 01303 670561) - Ward councillors for North Downs West, Shepway District Council

## Etchinghill Update June 2015

### SPEED WATCH

During the last session of Speed Watch conducted in the Parish between 22nd May and 29th May, 14 vehicles were recorded at speeds in excess of 35 m p h. Two vehicles were recorded doing 41 m p h and 43 m p h respectively! The speed limit as you know is 30 mph! This information has been passed to the appropriate departments and action will be taken.

### ETCHINGHILL RESIDENTS' ASSOCIATION

**ETCHINGHILL CINEMA CLUB** This month's film is **"The Theory Of Everything"** (12) on Monday, 20th July, at the Etchinghill Village Hall, doors open at 7.00 for 7.30 pm start. This biography/drama, starring Eddie Redmayne and Felicity Jones, is set in the 1960's when Cambridge University student and future physicist, Stephen Hawking, falls in love with fellow collegian, Jane Wilde and the rest is history. This will be a popular film so get there early to ensure you get a seat! Everyone is welcome at this friendly, relaxed community event. Membership is free (you may join on the night) and the entrance fee of £5.00 includes admission, refreshments and a lucky draw ticket. Film shows take place every third Monday of the month. For further information, please contact Lorraine on 01303 863333."

### ETCHINGHILL VILLAGE HALL

**OPEN HOUSE** (every Monday from 10.00 am)

Monday 6th July, Mr John Wilson, CEO, will give a talk on The Rainbow Centre in Folkestone. 10.30 am start, refreshments available, all welcome.

Monday 13th July, lunch at The Gatekeeper from 12.30. Should you wish to reserve a place please give your name to Edna Tel: 863394.

Children's Fun Day, August 29th - Etchinghill Village Hall. Fun and games for the children including cup cake decorating competition, face painting, quizzes, etc. See the Etchinghill Residents website [www.Etchinghill.info](http://www.Etchinghill.info) for updates.

**FARMERS MARKET** (first Saturday in the month starting at 10.00 am)

Last month's raffle prize winner was our own District Councillor, Susan Carey. She very kindly donated her prize to "THE BIG LUNCH" and a local resident, as she had won before. Plenty of stalls and refreshments available.

### LOST AND FOUND

Have you recently lost a key on the Etchinghill Amenity Land? If so please contact Jean on 862488 for information.

If you would like to include an item in the Etchinghill Update, please contact **Barbara** on 01303 862873



## Rhodes Minnis Cat Sanctuary

Rhodes Minnis CT4 6XU

**Open Day Sunday 19th July 10am-4pm**

Activities, Stalls, Refreshments, See Our Work - Meet The Cats



## theWI INSPIRING WOMEN

Barbara Syrett welcomed members and one guest to the June meeting which was in memory of Daphne Melrose. A birthday posy was presented to June Manton. Rita Warner read

a report regarding the NFWI 50th Anniversary annual meeting held at the Royal Albert Hall on 2nd June in the presence of Her Majesty The Queen, the Princess Royal and the Duchess of Wessex. A great experience for all who attended nationwide. Gill Le Cras was thanked for the marvellous cream tea held at her home which was enjoyed by all who attended.

The speaker, Ian Porter gave an in depth talk on the real Downton Abbey, depicting the hard work and life of staff working in the large stately houses until after the Great War, nothing like the TV series.

The competition winner for an old cookery book was Julia Tappenden. We then enjoyed a great tea, the hostesses being Sylvia Clark and Gladys Harris.

Next meeting will be held on Tuesday, July 21 at 2.30pm in the village hall when Patricia Marshall will speak about her guide dog, Chloe. For further information, please contact Barbara Syrett on 01303 265229 or Rita Warner on 863503

## Lyminge Bowls Club

There are not many home fixtures in July, but there is a family fun day which you are invited to participate in, and a warm welcome will await you if you want to come along and watch this or any of the other matches. The dates are as follows:-

Thursday, 2nd July	Ladies & gents from Betteshanger visit us today
Saturday, 4th July	A mixed team from New Romney play our club members
Sunday, 5th July	A team from Thurrock in Essex spend the afternoon with us
Saturday, 11th July	Another team from Essex – Springhouse – visit us today
Sunday, 12th July	Family Fun Day – come and be challenged! All ages welcome
Saturday, 18th July	Club members vie to win the Glasgow Shield
Sunday, 19th July	Our opponents will be ladies and gents from Cheriton

All the above games start at 2.30 pm. All family members welcomed for the family fun day. Do come along and give bowls a try. Club members will also be found playing on the green on Wednesday afternoons and Friday evenings. If you want to have a go, come along and ask. Call 863495 for further information.



## Lyminge Historical Society

Please note that there is no talk in July

The **July** visit is as follows:-

Note change of departure from Lyminge

**Tuesday 16 July** (Leave Lyminge School Car Park 11.45am)

**St. Peter's Village Tours, Broadstairs, 1.30 pm**

Places still available

### Archaeology on Tayne Field during August

**Gabor Thomas** will talk about the a scaled-down dig that will have occurred throughout August

on **Friday 28 August Methodist Church 7-9pm**

Help is required with finds washing.

An **Anglo-Saxon Open Day** will take place on Tayne Field on **22nd August**.

Keep an eye out for posters with details.

The next talk in the Tayne Centre is on **Tuesday 1 September**  
*The Goodwin Sands, John Buss*

**Lyminge Historical Society**  
**Mobile Tel. No. 07759 260816**

**Website: [www.lymingehistoricalsociety.co.uk](http://www.lymingehistoricalsociety.co.uk)**

## ROUNDWOOD HALL PAY & PLAY GOLF CLUB

Behind the line of conifer hedges on Stone Street (B2068) you will find a friendly & welcoming short golf course.

**9 holes - £8.00    18 holes - £12.00**  
**£2 more at Weekends & B/H**

Stone Street, Lyminge  
Folkestone, CT18 8DJ  
01303 862260

Fantastic new  
membership  
opportunities



**FRIENDLY    RELAXED    AFFORDABLE**  
**[www.roundwoodhall.co.uk](http://www.roundwoodhall.co.uk)**

"The only place success comes before work is in the dictionary." - **Vince Lombardi**

## LYMINGE CALENDARS

Over the past years, **The Lyminge Association** has published a calendar which has proven to be very popular, and there's every reason to think that this year's will be just as popular. However, this year we would some suggestions as to the theme that might be adopted. Time is tight and your thoughts need to be with me by **13th July** to be considered that evening at the next Committee meeting. Please send your ideas by email, phone, letter, ....smoke signals..... morse code...to me **[pb@pbarnes20.plus.com](mailto:pb@pbarnes20.plus.com)** or **01303863737**.

## Lyminge Weather Statistics – May 2015

With thanks to Mr D. Godden for these weather statistics and notes.

	Temperature (°C)	Air Pressure (hPa)	Wind Speed (mph)	Total Monthly Rainfall
Maximum	22.3 (12/05/15)	1024 (17-18,21-23/05/15)	30.0 SW (05/05/15)	104.6mm (3.99 in)
Minimum	3.1 (20/05/15)	995 (03-05/05/15)	Highest Daily Rainfall	22mm (0.87in) (04/05/15)

The weather was a little unusual with many warm days, but an equal number of cold nights.  
However, the month was frost free.



**Hythe Aqua Swimming Club** is expanding its nationally accredited learn-to-swim programme and now has vacancies in its lessons that are held on Tuesday & Thursday evenings at Hythe Pool.

**To book your place**

**Tel: 01303 862353 or checkout our website:**

**www.hytheaqua.org.uk**



## Park House Sanctuary Boarding Kennels & Cattery

Park House, Stelling Minnis CT4 6AN

Brick-Built Heated Kennels ~ Daily Walks

Reasonable Rates

All dogs must be fully inoculated

Heated Cat Chalets Quiet Area

Inspection Invited.

To book or for further information, call us on

**01303 862622**

or email [lord.whisky@btinternet.com](mailto:lord.whisky@btinternet.com)

[www.lordwhisky.co.uk](http://www.lordwhisky.co.uk)

## SATURDAY MARKET

Tayne Centre, Church Rd, Lyminge

**18th July**

9am - 12noon

For all local

Gifts, Crafts, Cakes, Preserves, Books

And much More

Sausage or Bacon in a Roll

Teas Coffee



## Coach & Horses



*Ro & Steve would like to thank everyone for their continued support since taking over the Coach & Horses.*

### Friday Theme Buffet

3rd July - Mexican

10th July - Italian

17th July - Indian

24th July - Polish

### Wednesday 29th July

Quiz Night

### Senior Citizen Lunches

£6.95 for 2 Courses available

Mon-Sat

### Sunday Carvery

12-4pm

**Bookings and Contact: 01303 862694**

Editor: [pb@pbarnes20.plus.com](mailto:pb@pbarnes20.plus.com)



## Lyminge Handbell Ringers

The **Lyminge Hand Bell** group continue to introduce new music so look forward to the opportunity of playing these new pieces locally, so please consider booking us for your special celebration. You can come and hear us play before booking if you wish so you can select your own choice of music. We have an increasingly wide selection to choose from. All we need at the venue is a large table for our bells and music, room for up to 12 players and a minimum donation of £40 for our charity, the Nepali Children's Trust. A small contribution to travelling costs is also appreciated for bookings more than 5 miles from Lyminge. Weekends and evenings only please and plenty of advance notice is helpful. Want more info or make a booking?

Call **Ro Edmond** on 863201 or email [wellldorm@aol.com](mailto:wellldorm@aol.com)

## Rhodes Minnis Village Hall

## Beetle Drive

**Friday 24th July**

at the Hall 7.30pm

Adults £2 – Children 50p

*Teas, coffee and juice provided*

*There will also be a raffle*

New players welcome to come and join  
in this old fashioned fun evening

Tel: 01303 863737



## Hay Fever Sufferers Urged To Use Pharmacists

NHS South Kent Coast Clinical Commissioning Group (CCG) is urging people to use their local pharmacy for common minor ailments like hay fever.

As summer arrives and the pollen count rises, one person in five is likely to suffer from the allergic condition, which causes sneezing, a runny nose and itchy eyes.

But not everyone knows that treatment can be provided by a pharmacist rather than having to book an appointment to see a GP.

Pharmacists also provide expert, free, confidential advice on health issues such as cold sores, constipation, coughs, cystitis, diarrhoea, headache, mild eczema, sunburn, sprains and strains. You can simply turn up and ask for advice with no prior appointment.

Details of your nearest pharmacy along with opening times can be found on the free NHS app, Health Help Now: [www.healthhelpnow-nhs.net](http://www.healthhelpnow-nhs.net) or download Health Help Now from the App Store or Google Play.

Dr Darren Cocker, Chair of the CCG, said: "People who experience asthma and eczema have a higher risk of developing hay fever, and the most common form of hay fever affects those allergic to grass pollen. This type of pollen is at its highest level from mid-May to July.

"Hay fever can cause much misery, but the good news is that it can be controlled using over-the-counter medication available from your pharmacist.

"Community pharmacists can also offer advice on how to avoid triggers and treat your hay fever. And you don't need a prescription for hay fever medicines, with many treatments being available for little cost from a pharmacy.

"So for most people, there is no need to let hay fever take up any more of your time by waiting for a doctor's appointment.

"If your symptoms persist despite using medication as advised by the pharmacist you may wish to speak to your GP about alternative medication which is only available on prescription."

If you urgently need medical help or advice but it's not a life-threatening situation, ring NHS 111. If you don't know what to do or who to contact, use Health Help Now.



## CANTORES

Musical Director Adrian Bawtree  
and Lyminge Village Hall Committee present

### PROM CONCERT 2015

Saturday 4 July 7.00pm  
Lyminge Village Hall

The choir will present a programme of popular British favourites with an American twist, leading of course to the traditional rousing finale of the Last Night of the Prom

Don't miss it!  
Bar and refreshments available

Tickets £7.50 - children under 12 free  
From Laing Bennett Estate Agents, Lyminge,  
or on the door

## MUSIC ON A FRIDAY

St Mary's and Ethelburga Church Lyminge

7th August

### BBQ AND WINE

BBQ at 7pm, music starts at 7.30pm  
Listen to a new rock/folk group called  
"Endless Knot"

FREE ENTRANCE

Plus – an Open Mic time – so bring your own music backing track, instrument and come and play/sing for us. If you would be interested in taking part in the Open Mic time, please ring Roger on 01303 6218223.

**MUSIC ON A FRIDAY** would like to thank the MISSION GOSPEL CHOIR OF FOLKESTONE and all the other musicians and helpers for their support last Friday. We are pleased to announce that we raised £520 for the children caught in the Nepalese Disaster.

## Midnight Feast - courtesy of John Carr, Korf House, Canterbury Road, Lyminge!!



## LYMINGE GARDENERS' SOCIETY



Tuesday 18th August  
COACH OUTING TO KEW GARDENS

Explore the world's most famous botanic garden. Just 30 minutes from central London, Kew Gardens boasts breathtaking landscapes, iconic glasshouses, and a vast range of rare and beautiful plants.

Members £23.00, Non Members £28.00

Pick up 8.30am, Tayne Centre, Lyminge

Tickets available now from Age UK Lyminge, Station Rd



## THE TAYNE CENTRE

please support us to raise funds  
2015 - the year of the 'Hall refurbishment'



### 10th October Afternoon Tea Concert with the Hoskins Duo

Listen to Dave and Maggie, join in some songs  
and enjoy an afternoon tea

A date to mark on your calendar



## REGULAR

## ACTIVITIES

**Pond Dipping** - first Saturday of month, 11am-12.30pm  
**Art Club** - Nature's Art Club using natural materials. First Saturday of month, 1-3pm. £1.50 per person.

Both activities led by experienced people. Contact Annie Begley (01303 840665 or email: annie@anniebegley.co.uk)

**Focus on Craft** - focus on crafts, from wood turning to lace making, etc. - first Sunday each month  
5th July - wood turning demos - all day  
2nd August - card making - 1am-12noon, 2-3pm  
6th September - lace makers demonstration - all day

## SUMMER EVENTS

25-26th July - Summer Craft Fayre

9th August - Forget-Me-Not Fun Day - fund raising for Alzheimer's Society

We are open every weekend and bank holiday 10am-5pm

**The Elham Valley Line Trust, Peene**

**01303 273014**

**www.elahmvalleyline.trust.org**

Registered Charity No. 295563

## ETCHINGHILL RESIDENTS' ASSOCIATION

## Etchinghill Cinema Club FILM SHOW

"THE THEORY OF EVERYTHING" 12

Monday, 20th July

Etchinghill Village Hall at 7.15pm

Entrance Fee £5 per head

includes Membership

FREE Refreshments and Raffle



Lorraine 863333 for info

## THE

## ETCHINGHILL MARKET

### Saturday 4th July & 1st August

If you would like to come along to shop our various food and craft stalls, including home made jams, cakes, fresh pork. Also aromatherapy products, hand made jewelry and wood turning. Or just enjoy a bacon roll and a cup of tea.

*Etchinghill Market is the place to be.*

Saturday 4th July & 1st August and every first Saturday of each month from 10am

**Etchinghill Village Hall**

For further details contact John on 863819. Charity No. 302736



*love life  
love  
Slimming  
World*

Join a warm and friendly group near you today...

**NEW for 2015!**  
Power up your weight loss

**NEW CONSULTANT**  
**Lyminge**  
Lyminge C of E Primary School,  
Church Road.  
Tuesdays 7.00pm  
Call Lucie 07894 645804

visit the website to read Jess's story  
**slimmingworld.com**  
0844 897 8000

**save £5 join now!**  
Just £9.95 on week one  
then £4.95 each week

*Slimming  
WORLD*  
touching hearts, changing lives

## Looking for homecare services?

Our experienced Care Assistants are on hand to offer support to the elderly, people with a learning or physical disability or other care needs for home services no matter your needs -

- ✓ One call a day to multiple calls
- ✓ Short term or long term packages
- ✓ Home from hospital assistance
- ✓ General assistance or complex care
- ✓ Weekday, weekends, days, night call times



Contact your  
local branch today

**01303**

**250200**

**www.nurseplusuk.com**



Direct Payments Accepted

## Letters to the Editor.....

...from **David Whitethread** (mobile hairdresser)

To all my lovely clients whom I have had the privileged and pleasure of cutting hair over the past 28 years, I thank you for all your loyalty, laughs, serious chats, cups of tea and coffee and sometimes soup, the hugs when one or either of us has been in a bad space and for being so much more than just clients.

Well dear friends, I am sad to tell you that following heart attack on 20th April and having been told I have a year of heart rehabilitation to deal with, my wife and I have decided for me to retire. It was not an easy decision but I have to put myself first. I am sorry to have to announce my intentions this way. I would have much preferred to have done it face-to-face.

So thank you so much for all your support and friendship over the past 28 years. God bless you all. **David.**

\*\*\*\*\*

....and thank you to everyone who made phone calls, sent get well cards and gifts. You have all been so kind with lifts for Pat to-and-from hospital and the shops, along with your thoughts and prayers for my full recovery.

Slowly, my fitness is returning but it will be a long journey before I am anywhere near my previous fitness.

So once again, thank you so much for all your support; what better place to have a crisis than in the Elham Valley, you have all been marvelous. **David**

...from **Snippers and Clippers Hair Salon**

The 'Girls' at Snippers and Clippers Hair Salon are sorry to hear of David's illness and realise how hard it must be to hang up your scissors. We do, however, wish him a long and happy retirement

We would like to welcome any of David's clients to the Salon. We can also arrange home visits to anybody who is unable to get to us.

On a non-hairdressing note, Tracey, the owner, is doing a zip wire challenge in Snowdonia in aid of the Nepal Earthquake Appeal on 27 July. Any sponsorship money would be gratefully received (01303 647222)... and thank you to those who have already donated.

...from **David Godden**

### CARELESS USE OF GUNS

I have had my lounge window shattered by a missile from a gun. This is going to cost £5000+ to replace. It occurred last evening - 18 June 2015.

May I ask those persons using guns in or near Lyminge to take especial care about the direction in which they shoot.

The incident has been reported to Kent police who confirm the damage is consistent with a missile discharged from a low velocity gun.

Luckily no injury was caused as I have safety glass fitted.

**David Godden 30 Mayfield Road, Lyminge.**

## CRAFT EXHIBITION



Ann Healey and her team of Lace Makers in action. You could even have ago yourself - if you were brave enough !

Jean Vincent working with clay that by the end of the day had turned into a full size duck waiting to be fired and painted.



Sue Chitty working her spinning wheel at the same time as answering questions about dyes and how the spinning process works.

Louise Goodard made a great variety of tiny ceramic sheep during the day, and somehow those tiny animals seemed to each have their own personality !



See page 15 for more photos of the Craft Exhibition

### Rhodes Minnis Village Hall Summer Flower Show

Saturday 1st August 2015

Schedules and entry forms are available from:  
Daphne Andrews 862865, on-line at [www.rmvh.org.uk](http://www.rmvh.org.uk) or  
Lyminge Library

Show starts at 14.30 - Rhodes Minnis Village Hall  
Refreshments, raffle, tombola, bric-a-brac, cakes and  
produce. All Welcome.

For more information please contact  
Janet Fry at [show@rmvh.org.uk](mailto:show@rmvh.org.uk)  
or phone 01303 863177

Reg Charity: 800345





## LYMINGE GARDENERS' SOCIETY



### Tuesday 21st July AFTERNOON OUTING PORT LYMPNE GARDENS

Members £6, Non Members £7, including refreshments  
Meet at Post Office car park 1.30pm, lifts available

Followed by:

### THE SUMMER SHOW

**Saturday 8th August, The Tayne Centre**

Flowers, fruit, veg, cookery, photography and classes for the children

New exhibitors would be most welcome (help available)  
or come along from 2pm to view

Teas, homemade cakes & raffle, free entry to view  
Schedules & entry forms available from  
Lyminge Post Office & Age UK Lyminge

For more information please call Veronica on 862264

## Q SUMMER

I  
Z

on

**Saturday 18th July**

at

7.00pm for 7.30pm start

Come along to test your knowledge  
at the village hall for a fun packed evening

Tables of 6 – 8 persons : £8.00 per person

Two course hot supper

Licensed Bar

**To book your table call:  
Niki 812651**

Organised by the Village Hall Management Committee Reg Charity 281845

## THE CHAIR-DRESSER

Are you having a party? Getting married?  
Elegant, stylish, chair covers to hire, complete with  
your choice of luxury, coloured sashes; will transform  
any room.



We take care of delivery, fitting and collection to take  
the stress out of your day.

**'We dress to impress'**

Contact: 07958 737 977

Email: mel.vitality@hotmail.co.uk

## FOLKESTONE DISTRICT NATIONAL DANCE GROUP

Meets on Tuesdays 7.30 – 9.30 pm from late September to  
mid-June at

**Newington Village Hall, Newington, Folkestone**

to learn and enjoy folk dances from many different  
countries. No experience or partner necessary.

Tel: **01303 249199 or 01227 709557**

Editor: pb@pbarnes20.plus.com

## In aid of the LORD WHISKY SANCTUARY FUND

(Registered Charity 283483)

Park House, Stelling Minnis, Canterbury, Kent CT4 6AN

Tel 01303 862622 Fax: 01303 863007

Email: lord.whisky@btinternet.com

## BOOT & SUMMER FAYRE

**Saturday 25th July**

At Park House Animal Sanctuary, Stelling Minnis, CT4 6AN

**Boot Fair from 8am** (cars £6.50/vans £10)

**Entertainment from 12 noon**

including Live Music from Acoustic Works, 'The Dancing Day Trippers'  
(in association with Applause Outdoors), Circular Dancing,  
Belly Dancing and more!

Lots of stalls ~ Tombola and Raffle ~ Refreshments

Admission by donation ~ Plenty of free parking

**www.lordwhisky.co.uk**

## Lyminge Village Hall 100 CLUB RESULTS

The monthly winner of the Village Hall 100 Club was drawn  
at the Coach & Horses in April 2015

**The winner was Jen Huntley : Ticket number 07**

If you would like to join our the club then please contact  
Kirsty Cunningham

01303 863256 : bam666@btinternet.com

## Elham Valley & Wye Lions Club

Please make a note that the date for our annual  
Charity Golf Day at Sene Valley course is Sept  
4th. Following the success of our Charity Quiz in  
March which raised £600 (Thank-you) we will also  
be holding another quiz night at Etchinghill Village  
Hall on 24th October. For more details of these,  
please call Roger on 0845 601 5212.



## Etchinghill Baby & Toddler Group

We are a friendly toddler group, which caters for babies and children from 0 to school age. Crafts, messy play, trikes, toys and a singing session are included each week. In dry weather there is also outside access for the children to play.

We meet on Wednesdays between 10am -12noon at Etchinghill Village Hall. We charge £2 per family, 1st session is free. Tea/coffee and healthy snacks are provided. If you have any queries please contact

**Julia Tesoro 07809705309**

## Lyminge Baby and Toddler Group Urgently Need Your Help

As children move on to primary school, so adult support changes. The Group urgently needs more adult support for it to survive. It only takes from 10.15am to 12.15pm on a Tuesday to help run the Group.

### COULD and WOULD YOU PLEASE HELP?

Please call **Elizabeth** on **07513590931** to offer your help and have any questions answered.

## Rhodes Minnis Toddler Group

We are a friendly group who meet at Rhodes Minnis Village Hall on Thursday mornings 10am-12noon.



For Mums, Dads, Grandparents and Minders to come and enjoy a chat over a cup of tea or coffee while your child/children play. Cost £1.50 per morning – first morning free. New members very welcome. For more information phone **Elaine** on **01303 863096**



## Lyminge Pre-School



**'OUTSTANDING' – in every category  
Ofsted Feb 2011**

**We are now open between 8am and 6pm  
ALL YEAR ROUND**

We are a well established pre-school with committed, enthusiastic and highly qualified staff passionate about providing the highest standards of childcare.

To arrange to meet the team, please call:  
01303 863149 (day) or 07709420736 (eve) or email  
lymingepreschool@gmail.com and visit our website  
[www.lymingepreschool.org.uk](http://www.lymingepreschool.org.uk)

## SHEPWAY LIFELINE

HELPING PEOPLE TO LIVE INDEPENDENTLY IN THEIR  
OWN HOME FOR LONGER

The service they are renowned for is the red button pendant that is worn around the neck or wrist. In an emergency, when it is pressed, it calls for emergency assistance. The Lifeline really is a life saving service and is highly valued within the community. By enabling people to live in their own homes for as long as possible, it avoids the need for expensive residential and nursing home care.

Shepway Lifeline is Telecare Services Association accredited and has an innovative 24/7 monitoring centre, supplying all facets of Telecare alarms, including care and security solutions for vulnerable individuals, lone workers and local businesses.

To contact Shepway Lifeline: -

**Phone:** (01303) 242615 or 242971

**Address:** Shepway Lifeline, Civic Centre, Castle Hill  
Avenue, Folkestone, CT20 2QY

**Email:** [lifeline.proactive@shepway.gov.uk](mailto:lifeline.proactive@shepway.gov.uk)

**Website:** [www.shepway.gov.uk/lifeline](http://www.shepway.gov.uk/lifeline)



## Sign to Nursery Rhyme Classes

Etchinghill Village Hall on Tuesday mornings

Come and learn to sign with your baby. Signs are taught using nursery rhymes, action songs and musical instruments.

Spaces are limited so to book your place and for more information please call

**07800 737936** or go to

**[www.daisychaincourses.co.uk](http://www.daisychaincourses.co.uk)**

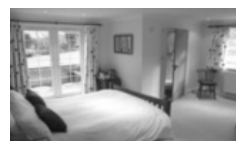


**Daisychain  
Courses**

## Articles, letters, ads, etc for the Newsletter

Lyminge Association would like to remind contributors that it cannot guarantee to deliver newsletters to their final destinations by the 1st of the month. **We strive to ensure Newsletters are received within the 1st week of the month.** Should your event be happening within that first week, we would strongly recommend it is advertised in the previous month's edition.

## Bridge Cottage Bed & Breakfast 4 Stars Silver Award



Luxury accommodation in a tranquil setting  
Chris & Alison, Shuttlesfield Lane, Ottinge  
**01303 862933**

**[www.bridgecottagesimplybandb.co.uk](http://www.bridgecottagesimplybandb.co.uk)**

## Shuttlesfield Barn – 4 Star Gold – Self Catering

Rural location. Two bedrooms, ensuite bathroom and wetroom. Disabled facilities. Short and longer stays.



Families, dogs, horses welcome. Located on walking, cycling, riding routes. Heated outdoor pool in summer.



Info@shuttlesfieldbarn.co.uk Tel:01303862729  
[www.shuttlesfieldbarn.co.uk](http://www.shuttlesfieldbarn.co.uk) CT18 8LB

## bus times

**for buses from Lyminge Post Office to  
Folkestone Town Centre via Etchinghill & Cheriton High Street**

**MONDAYS TO SATURDAYS except Bank Holidays**

There are route 17 buses at 0705 (not Saturdays), 0749, 0909, 0939 (not Saturdays), 1004, 1034, 1104, 1204, 1304, 1404, 1504, 1614 (1619 on schooldays), 1629 (schooldays only), 1654 (schooldays only), 1719, 1749, 1834, 1929, 2113 and 2313.

There are also route 18 buses to Sandling Station & Hythe - for times see our website or call the number below.

**SUNDAYS & BANK HOLIDAYS**

There are route 17 buses at 0947, 1147, 1347, 1547, 1802 and 2002.

**for buses from Lyminge (opposite Aberdeen House) to  
Canterbury City Centre via Elham, Barham & Bridge**

**MONDAYS TO SATURDAYS except Bank Holidays**

There are route 17 buses at 0727 (schooldays only), 0732, 0752, 0903, 0938, 1028, 1128, 1228, 1328, 1443, 1613, 1703, 1803, 2001 and 2201.

There are also route 18 buses to Canterbury via Stelling Minnis and Bossingham - for times see our website or call the number below.

**SUNDAYS & BANK HOLIDAYS**

There are route 17 buses at 0827, 1027, 1227, 1427, 1642 and 1842.

These times will operate from 2<sup>nd</sup> November 2014.

timetable information 0871 200 22 33  
Calls cost 10p per minute plus network extras

www.stagecoachbus.com/eastkent



## TAYNE CENTRE HALL HIRE

*Previously known as the Lyminge Methodist Church Hall*

### Clayson Hall

1 October to 31 May (including heating) £9.00 per hour :  
£32.00 per 4 hour session : £64.00 full day

1 June to 30 September

£6.50 per hour : £23.00 per 4 hour session : £46.00 full day

**Rigden Room (Parlour) with heating, if required\***

£6.50 per hour all year (\*electric - over heaters).

**Burren Room with heating, if required\***

£5.00 per hour all year, (\*electric - over heaters)

### Overnight Stays

1 June to 30 September £40; 1 October to 31 May £55

For any enquiries please call **07971 722 401**



## ETCHINGHILL VILLAGE HALL HIRE FEES

The next time you are thinking of holding a function you should try Etchinghill Village Hall, which holds the highest Hallmark accreditation level, with its excellent facilities, including ample parking space.

The standard hire charge for the main hall and kitchen are:

Weekdays £10.00 per hour

Saturdays £12.00 per hour

Sundays £12.00 per hour

During the winter months (1 November to 31 March) a Winter Supplement of £1.00 per hour is added to the above rates.

Special rates apply for weddings and all day events with a range of discounts on the above rates applying to all lettings of more than three continuous hours and additional discounts are available to Etchinghill Residents and Regular Hirers.

The use of a separate Committee Room is also available.

For all bookings or enquiries please contact:

**Sylvia Williams on 01303 863547**

## Rhodes Minnis Village Hall

Charity No.800345

Rhodes Minnis Village Hall is located 2kms (1¼miles) from Lyminge and just off Longage Hill and Whitehorse Lane in Chapel Lane

The hall, which holds Hallmark accreditation, is ideal for children's parties, band practice, quizzes, meetings and fundraising events and has the capacity to take parties of up to 100. The rates include the use of the kitchen.

### Rates

Mon to Fri £15 per session £40 all day

Sat & Sun £20 per session

£30 for evening session and £60 all day

### Sessions

AM session 08.30 - 12.30

PM session 13.30 - 17.30

Evening session 18.00 - 23.45

There are special rates for regular users.

For all bookings and enquires please contact:

**Martin Fry 01303 863177 or 07849217793 or e-mail:  
book @rmvh.org.uk**

## Lyminge Village Hall

Lyminge Village Hall is one of 14 Hallmark L2 accredited village halls in Kent. Consequently, we offer a safe, secure and well-managed village hall and this accommodation:

1. Committee Room, suitable for up to 12
2. Harry Storey Room, ideal for small club activities
3. The main hall, great for dances and large celebrations with bar, servery and full stage

We remain a competitive local venue ideally situated off the main road with ample parking. Examples of prices for the main hall are: Friday or Saturday evening £65.00, weekday evenings £20.00 and all day Saturday £135.00.

**For full price details and room availability call our  
booking secretary, Sam Cunningham on 863256**

## Sibton Park Cricket Club

We extend an invitation to our local residents, please join us on match days and selected evenings and take advantage of the Club's outstanding venue, facilities and fully licensed bar.

Having a Celebration? Require a regular venue?

The club house and grounds are available

**For further information or to make a booking**

**please contact: Andy & Clare Allon**

**07817 751262 - aallon44@yahoo.co.uk**



This page is printed to give readers and organisers the opportunity of planning events without clashing with existing ones, which are already in the 'diary'. It is not intended as a means of advertising and we take no responsibility for errors or omissions. Acceptance is at the discretion of the editor. Please send your updates by email to [pb@pbarnes20.plus.com](mailto:pb@pbarnes20.plus.com) or via methods outlined on Page 2.

Location and name codes follow:

**C&H:** Coach & Horses; **ECC:** Etchinghill Cricket Club; **EVH:** Etchinghill Village Hall; **ERA:** Etchinghill Residents' Association; **ES:** Elham Square; **JC:** Jubilee Centre; **JF:** Jubilee Field; **LB:** Laing Bennett; **LL:** Library; **LMC:** Lyminge Methodist Church; **LPC:** Lyminge Parish Church; **LSH:** Lyminge School Hall; **LVH:** Lyminge Village Hall; **LW:** Lord Whisky; **NP:** Nailbourne Parlour; **NVH:** Newington Village Hall; **PC:** Postling Church; **PH:** Lord Whisky, Park Hse. **PVH:** Postling Village Hall; **RVH:** Rhodes Minnis Village Hall; **RMC:** Rhodes Minnis Church; **SNL:** See News Letter for info; **TC:** Tayne Centre.

## One Off or Irregular Events

Date	Time	Event	Where	Tel. No.	Date	Time	Event	Where	Tel. No.
4 July	AM	Boot Fair	ECC		13 September		Garage Safari		863537
4 July	7pm	Cantores Prom	LVH	863992	26 September	AM	Boot Fair	ECC	
11 July	8pm	Evening of Holiday Fun	SNL	LB	5 October	7.30pm	Lyminge Association AGM		862699
12 July	2.30pm	Family Bowls	SNL		10 October	AM	Boot Fair	ECC	863049
17 July	9am	Age UK, Summer Fair	SNL		10 October	3pm	Afternoon Tea Concert	TC	863049
18 July	AM	Boot Fair	ECC		10 October	7pm	Autumn Quiz	LVH	
19 July	10am	Rhodes Minnis Cat Sanctuary Open Day	SNL		24 October		Lions Quiz Night	EVH	
25 July	8am	Boot and Summer Fayre	LW	863007	31 October	7pm	Halloween Party	LVH	
1 August	AM	Boot Fair	ECC		7 November		Bonfire Night	LVH	
1 August	2.30pm	Rhodes Minnis Summer Flower Show	RMVH	863177	19 November		Christmas Lights On	LB	
2 August	7.30pm	The Rude Mechanical Theatre Company	TC	LB or 862743	28 November		St Nicholas Fayre	LVH	862073
15 August	AM	Boot Fair	ECC		2-5 December	7.30pm	"Dial M for Murder"	LVH	LB
4 September		Lions Charity Golf Day	Sene Valley	08456015212	12 December		Haywardians Concert		
12 September	AM	Boot Fair	ECC						

## Weekly Events

Day	Time	Event	Where	Tel. No.	Day	Time	Event	Where	Tel. No.
Mon	10am	Open House	EVH	863394	Wed	10.15am	Mature Movers (Exercise)	TC	862873
Mon	10am	Bridge Club	BC	863177	Wed	6pm	Karate for Juniors	EVH	07554004526
Mon	10.30am	Lyminge Larks (Singing)	TC	01233750223	Wed	7pm	French Conversation	KH	862972
Mon	11am	Cookery	JC	01303269602	Wed	7.30pm	Cantores Domincae Choir	LSH	01233840961
Mon	2.30pm	Monday Fellowship	TC	862164	Wed	8pm	Scottish Country Dancing	EVH	862761
Mon	5.45pm	Lyminge Youth Drama Group	TC	862602	Thur	10am	RM Toddlers Group	RVH	863096
Mon	6.30pm	Judo Club	LVH	862946	Thur	10am	Art Group - Morning	TC	211364
Tues <sup>1</sup>	10am	Baby & Toddler Group	TC	863274	Thur	11am	Shopping trips to Supermarket	JC	01303269602
Tues	10am	Sign to Nursery Rhyme Classes	EVH	07800 737936	Thur	2pm	Art Group - Afternoon	TC	862972
Tues	10.30am	Art Class	JC	01303 269602	Thur	6pm	Ballroom and Salsa Dancing	EVH	07967979610
Tues	11.15am	Chairobics	JC	07967 342226	Thur	6.45pm	Short Mat Bowls	LVH	863842
Tues	6pm	Football Training	JF	863842	Fri	11am	Seated Exercise	JC	01303269602
Tues	6.45pm	Short Mat Bowls	LVH		Fri	5pm	Hawkinge Flyers (Lyminge Branch)	Katrina	07881457994

## Monthly Events

When	Time	Event	Where	Tel. No.	When	Time	Event	Where	Tel. No.
3 <sup>rd</sup> Mon	7.30pm	Etchinghill Cinema	EVH	863333	4 <sup>th</sup> Wed <sup>4</sup>	11am	Singing For Health	JC	862364
Last Mon		Parish Council Meeting	SNL		Last Wed	7.30pm	Quiz Night	C&H	862694
1 <sup>st</sup> Tues	11am	Reminiscence	JC	01303269602	4 <sup>th</sup> Fri	7.30pm	Beetle Drive	RVH	862616
1 <sup>st</sup> Tues <sup>2</sup>	7.30pm	LHS Talk/Event	TC	862972	Last Fri	1.30pm	Team Quiz	JC	269602
3 <sup>rd</sup> Tues	2.30pm	Etchinghill W.I.	EVH	863503	1 <sup>st</sup> Sat	10am	Village Market	EVH	863819
3 <sup>rd</sup> Tues <sup>3</sup>	7.30pm	Gardening Society	TC	862264	2 <sup>nd</sup> Sat	10am	Postling Ch. Coffee Morning	PC	863536
1 <sup>st</sup> Wed	10.30am	Lyminge Friends	LMP	862598	3 <sup>rd</sup> Sat	8am	Saturday Market	TC	862164
2 <sup>nd</sup> Wed	10.30am	Mothers Union	NP	862221	3 <sup>rd</sup> Sun	10am	Parish Walk	Richard	862015
3 <sup>rd</sup> Wed	7.30pm	RM Evening Circle	RVH	862913					

<sup>1</sup> In term time only <sup>2</sup> Except Jan, Feb, July and August <sup>3</sup> Except Jan, Feb, Aug <sup>4</sup> Except Aug and Dec



# Out and About

*Do you have any photos of local events or local groups in action, please call 01303 862699. Give your group a FREE plug!*



**Lyminge Rainbows [left] and Brownies [right]** 'dressed' the St. Ethelburga Well for the village once again this year and it looked even more attractive than last year. This now seems a regular event in the village's calendar. Thank you to you all!



**The Lyminge Art Group's** display in the Harry Storey Room at the Village Hall attracted a lot of attention at the Craft Show on 21st June. ➡



⬅ **Lyminge Primary School PFA** Summer Fete was a resounding success on 20th June and raised in the region of £1200 which will help to make our school even better!



## Lyminge Midsummer Festival

**Canterbury Brass Band** ➡ played to a very appreciative audience on the evening of Tuesday 23rd at the Parish Church



The mysteries of Letterpress Printing were revealed at the **Craft Exhibition** and you could hand type-set and print your own certificate ➡

⬅ **Age UK** held a VE Day Party at the Tayne Centre on Sunday 10th May. The guests ranged in age from 7 to 94. The whole event was made possible by the AgeUK volunteers who baked, provided transport and helped on the day.



**Lyminge Friends** enjoying a Cream Tea at the Lord Whisky Tearooms on 15th June

**A Big Thank you to everyone who helped with the Lyminge Midsummer Festival 2015, what a remarkable village this is!**

## Mystery Photo



Last month's picture was part of the sign above Snippers & Clippers - the screw cap in the bottom left had corner gave the clue to it being the sign above the shop.  
You will need to look up again for this one ?



## Ralph Allard Chimney Sweep



All chimneys, boilers and stoves swept.  
Brush and Vacuum. Certificates issued.  
HETAS and NACS registered, fully insured.

Member of National Association of Chimney Sweeps

**01303 844465 or 07813716654**

**THE CLINIC**  
Garden Suite  
Pendragon House  
4 Station Road  
Lyminge  
Kent CT18 8HP  
**01303 863359**



info@theclinic-lyminge.co.uk  
www.theclinic-lyminge.co.uk

## REGISTERED OSTEOPATHS & MEDICAL ACUPUNCTURIST

**Adam Price B.Sc Hons (Ost) Katie Price B.Sc Hons (Ost)**

The Clinic 01303 863359 or mob: 07980 897382

- Treatment of lower back pain, both acute and chronic
- Treatment of tension/cervical type headaches both acute & chronic
- Treatment of various stiff & painful arthritic conditions
- Treatment of sports injuries, both soft tissue & skeletal
- Deep tissue back, neck & shoulder massage for symptomatic relief

The cost of your treatment may be recoverable from your insurers. Please check



## Sunhouse Electrical

Your local reliable Electrician

Part P Registered & Elecsa Approved

Fully Insured & On Competent Persons Register

For a free quotation & advice call James on

**01303 766333**

**www.sunhouse-electrical.com**

## GOSBEE CONSTRUCTION

Over 30 years experience. Jacksons Expert Installer  
Reliable. Friendly. Professional

Property Maintenance  
Hedge & Tree Cutting  
Tarmacadam Works  
Grass Cutting

Building Work  
Garden Design  
Landscaping  
Fencing & Gates

Ponds  
Patios  
Driveways

For a free, no obligation quote: **07974 835511 or 01303 863337**  
Visit our website: [gosbeeconstruction.co.uk](http://gosbeeconstruction.co.uk)  
E-mail us: [info@gosbeeconstruction.co.uk](mailto:info@gosbeeconstruction.co.uk)

## S R Accounting and Business Solutions LLP

*"Working hand in hand with your business"*

**Denise Roberts, ACIS, ACMA & David Sayle**

Qualified accountants with a combined experience of over 50 years. We offer business start-up advice, business planning, monthly & annual accounts, VAT & tax submissions, full payroll service, company secretarial service.

[droberts@sr-accounts.co.uk](mailto:droberts@sr-accounts.co.uk)

**01303 862559**

**0751 1097707 www.sr-accounts.co.uk**



**MANOR**  
VETERINARY CLINIC

We care for them all, great and small

Lyminge Clinic: Methodist Church Hall  
Mon, Wed & Fri pm

**01303 273203**

**www.manorveterinaryclinic.co.uk**

## STERRY'S

*Independent  
Funeral Director*

01303 272525  
93 Cheriton High Street  
(opp Co-op)

01303 264400  
41 High Street, Hythe  
(opp Lloyds Bank)

Always here for you; 24 hour service. Home visits on request.  
Choice of pre-paid funeral plans

## Red Dragon I.T. Ltd.



- Windows, Mac & Linux Systems
- PC Health Checks
- Wired & Wireless Networks
- Website Design
- Graphic Design

T: 01303 723456 | E: [info@rdit.co.uk](mailto:info@rdit.co.uk) | [www.rdit.co.uk](http://www.rdit.co.uk)  
2 Station Road, Lyminge, Folkestone, Kent, CT18 8HP

## TIME FOR HEALTH! WEIGHT LOSS CHIROPRACTIC CARE

(The easy way!)

(Humans, horses, dogs & cats)  
Back pain, neck pain,  
arthritis, stiffness & much more  
[www.backtostraight.com](http://www.backtostraight.com)

**BACK TO STRAIGHT**  
CHIROPRACTIC  
...GENTLE TREATMENT FOR HUMANS, HORSES, CATS AND DOGS

**Will Wright: 07905 031850/01303 863460**

## LYMINGE FOOD AND WINE 01303 862225



We are here to serve you  
Mon. – Sun. 7:00am to 9:00pm  
including Bank Holidays  
National Lottery Here



## South East Aerial & Satellite Solutions

Digital – Freeview – Satellite – Aerials

Supply and fit of quality digital installations, FREEVIEW, SKY, aerials, poor reception and problem solving, upgrades and repairs by fully accredited engineers

Free quotations and advice, fixed prices, fully insured

**Freeview**

**NO CALLOUT CHARGE**

**freesat**

**07968 659404 - 07825168010 - 01303273640**

**To Advertise in this space, please contact the Editor**

**£9.50 per month or £95 per annum**

**[pb@pbarnes20.plus.com](mailto:pb@pbarnes20.plus.com) : 01303863737**

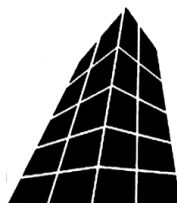


## COUNTRY FARE

### CATERING SERVICES

Country Weddings, Christenings and All Family Gatherings, Corporate Lunches, Seasonal Parties & Celebration Cakes

Sally Burr 01303 863642 07814 610995  
sallycountryfare@gmail.com



## Filehurst Associates

Archive, Warehousing, Logistics,  
Business & Household Storage.  
Domestic & Commercial removals  
and storage.

01303 239990 [www.filehurst.co.uk](http://www.filehurst.co.uk)

## FRESHLOOK GARDENS

Regular lawn mowing service. Garden design. Hard and soft landscaping. General garden work, fencing and decking. Turfing hedge cutting, small and medium tree work. Water features, ponds and patios.



For free quotation ring Geoffrey Hogben

01303 844 680 / 07866 091633

sales@freshlookgardens.info

[www.freshlookgardens.info](http://www.freshlookgardens.info)

Established since 1990. Fully insured.

## Browns

Sales & lettings  
7 days a week



Over 40 years of Kent  
village and country property

Elham 01303 840422 | Hawkinge 01303 892000  
[www.brownscountryproperty.co.uk](http://www.brownscountryproperty.co.uk)

## LYMINGE NEWSAGENTS

11-13 STATION ROAD, LYMINGE CT18 8HS  
01303862566

POST OFFICE, 'OFF LICENCE'  
CONVENIENCE STORE

Dry Cleaning and Laundry, can deliver Papers  
OPENING HOURS

7AM TO 10PM EVERY DAY

Local Tradesman

## J Tappenden

Established 36 years



Painter/Decorator/Builder

01303 862467

077755 78008

## THE DRIVING INSTRUCTOR

### ROGER DOWLE

ADI QUALIFIED PATIENT & PROFESSIONAL TUITION  
FOR MORE INFORMATION OR TO BOOK A LESSON PLEASE  
CALL ROGER  
07870939936

Introductory offer, beginners only, first five HOURS £80

## Jackson Plumbing Property Maintenance

Complete bathrooms and tiling  
No job too small. Special rates for OAP's.

Telephone: home/evening 01303 270691  
or daytime 07773 089398 or 07864 929826

## M. J. Athow

BUILDER & DECORATOR, EST. 1965  
GENERAL MAINTENANCE

Qualified and Insured. Free estimates  
Telephone: 862616 Mobile: 07976 306665  
Email: [m.j.athow@live.co.uk](mailto:m.j.athow@live.co.uk)

## SIX MILE GARAGE LTD

Stone Street, Stelling Minnis, Canterbury, Kent CT4 6DN

- Car and light commercial servicing
- Class 4 and 7 mots and repairs
- Car and light commercial accident repair centre (insurance approved)
- Diagnostics bay with latest equipment
- Tyre bay with four wheel alignment and balancing
- Air conditioning servicing

Tel. 01227 709214 or 01227 709491, Fax 01227 709331

E-mail: [office@sixmilegarage.co.uk](mailto:office@sixmilegarage.co.uk)

## Trevor Law

Electrical Installations



Serving Elham Valley for 30 years  
Part P Registered

01303 862348  
07850 970087

## J. V. Services

Servicing and Repairs:

- Garden Machinery
- Ride on Mowers
- Trailers & Horseboxes
- Quad Bikes
- Classic Cars

(Free collection and delivery)

## Mobile Mechanic

Serve/Repair/Full Restoration:

- Compact Tractors
- Vintage Tractors
- Classic Tractors

Mobile: 078 0300 3047  
[john@jvserviceskent.com](mailto:john@jvserviceskent.com)

To Advertise in this space, please contact the Editor  
£9.50 per month or £95 per annum  
[pb@pbarnes20.plus.com](mailto:pb@pbarnes20.plus.com) : 01303863737





## DILTON MINI SKIP HIRE

Ballast, Hardcore, Sand  
and Topsoil Supplied  
REGISTERED WASTE CARRIER  
**01303 812448 or 07799 433754**

*'Helping you enjoy your garden'*

## CRT Gardening

Knowledge of general gardening, including lawn care,  
hedge trimming and cutting, vegetable garden work, fencing  
installations and repairs, small and medium size tree work and  
ongoing maintenance of all of them.  
Heavy-duty work is also undertaken.  
Free estimates; fully insured. Karl Dodd 07967442518  
Email: karl.dodd@live.co.uk www.crtgardening.com

## AIR LINK CARS

(You pack up, we pick up)

Airport, Seaport & Long Distance Travel Specialists.  
The Family Run Business where service really counts  
Estate cars and People Carriers



Fixed price 24hrs a day. No extras.  
Written Confirmation of booking.  
For the Easy Airport Link, Think AIR LINK!

**01303 862704 - 07753 760897**

## WILL WOODBRIDGE

Carpenter/small works builder  
With years of experience

**01303 863062**



## Laing Bennett

PHILIP A CHAPMAN

With our excellent local knowledge, service  
and two local offices we will get you moving

The Estate Office 8 Station Road Lyminge Kent CT18 8HP  
T 01303 863393 E lyminge@laingbennett.co.uk  
134 High Street Hythe Kent CT21 5LB  
T 01303 264846 E hythe@laingbennett.co.uk

[www.laingbennett.co.uk](http://www.laingbennett.co.uk)

## Picture Framing

All types of framing undertaken, including  
tapestries, cross stitch, medals & badges etc.

Can collect and deliver.

**01303 863449**



## Claire's Country Kitchen

Join us and enjoy some of our delicious home-baked items.  
Breakfasts, Light Lunches, and Snacks with a selection of  
Teas or Coffees.

Open Tuesday – Saturday, 7.30am - 4.00pm  
Canterbury Road, Lyminge, Kent CT18 8HU

**01303 864222**

## SCRUBBERS - Est. 1988

THE HOME AND COMMERCIAL CLEANERS

One off, regular or moving day 'Blitz'

Oven cleaning – Ironing

Carpet cleaning and more...

For a friendly and reliable service

Free Estimates

**Tel: 01303487019 or 07834128671**

## Dennis Huntley

Installer of wood and multi-fuel stoves & fireplaces  
Heating engineer, solid fuel servicing and chimney sweep

**01303 862343**

**07850 784365**



## R. B. BUILDING SERVICES

General Maintenance, Painting, Carpentry,  
Plumbing, Upvc Fascias and Guttering.

Fully Insured

For a free quote please ring Roy Bowling on  
**Home Tel: 01303 863267 – Mobile 07947 32319**



## CEDAR HOME MAINTENANCE

Building Alterations  
Kitchen Installations  
Painting & Decorating  
Plumbing  
Plastering

Damp Proofing  
Drainage  
Carpentry  
Re-pointing  
Patio's

Windows & Doors  
Gutters & Down Pipes  
Fascia's & Soffits  
Glazing  
Electrical

Roofing  
Fencing & Gates  
Property Clearance  
All Work carried out by Qualified Tradesmen (Fully insured – all areas of Kent covered)

Call Dominic: 07968197613 Office: 01303 230787

[cedarhm@hotmail.co.uk](mailto:cedarhm@hotmail.co.uk) and [www.cedarhomemaintenance.co.uk](http://www.cedarhomemaintenance.co.uk)

Environment Agency Registered (Reg/472477) Established Since 1986

## HOLDEN PLASTERING

All aspects of Plastering  
Smooth-over Artex - a speciality.  
Coving, Tiling and Plumbing

Phone JAMES for free estimate or advice on:  
**01303 770449 07773 262970**

**Coul-Pups Pet Care Service** Fully insured, qualified and experienced member of National Association of  
Registered Pet Sitters (NARPS). Dog walking, 1 to 1 dog training or in class environment in association with Elham Dog Train-  
ing Club. Dog grooming, cat and small pet care and house/pet sitting.

Visit: <http://coul-pups.vpweb.co.uk/> Email: [coulpups@gmail.com](mailto:coulpups@gmail.com) Phone: 01303 255176 or 07542 727326

**Elham Dog Training Club** Lyn Fagg 01303 862820

### **D.M.B. Plastering**

All aspects undertaken  
Interior. Exterior. Plastering. Rendering.  
Coving. Ceilings Wall. Floors  
Finest quality assured. CSCS Certified.  
26 years experience.  
Free estimates. Reliable service. Fully insured.  
Call David on 07818 607209

### **P Davis + Co**

General Builders and Roofing Specialist  
All work undertaken  
Call for free estimate

**Tel: 01303 863049 or 0784 6769643**

### **Personal Computing**

For straightforward I.T. advice, solutions  
and training

Contact: **Steve Ashman**  
**862869**  
**sra@ashman-consulting.co.uk**

### **Piano Lessons**

40 years' piano teaching experience  
Currently accepting new pupils from beginner to diploma standard.  
Theory to Grade VIII. Recreational pupils welcome

Evening and some daytime slots available  
Pianos on rent-to-buy basis from £50 per month  
**Kevin Bull BA (Hons.), Dip. Mus., A.L.C.M.**  
Tel 01303 241199 :: Email: kevin@bullmusic.com



### **Wilco Plumbing & Heating**

Central Heating Installations & Repairs  
Gas & Oil Boiler repairs & replacements  
5 Year Guarantee on Worcester Bosch Boilers.  
Local Experienced Engineer, Emergency plumbing 24/7 call out  
Registered with the Institute of Plumbing  
Gas Safe Registered-OFTEC Registered  
**01303 862173 07860 452640**  
**paul@wilcoplumbing.co.uk www.wilcoplumbing.co.uk**

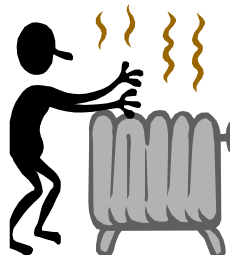
### **TOBY'S TREE SURGERY**

Thinning - Reducing - Maintenance - Felling  
ALL TREE WORK, BOTH PRIVATE AND COMMERCIAL,  
UNDERTAKEN BY OUR NPTC TRAINED OPERATIVES  
Professional Friendly Service

**FREE ESTIMATES - FULLY INSURED**  
**Contact Toby Griggs:**  
**07854 098 395 or (01303) 863642**

### **D. SCRIVENS**

PLUMBING & HEATING  
Oil Fired Boiler Installation,  
Commissioning, Service and Maintenance.  
Unvented Hot Water Systems - Solar Water Heating  
Central Heating - Water Softeners - Bathrooms - Showers - En suites  
Approved 'Aqualisa' Installer  
**WATER INDUSTRY 'APPROVED PLUMBER'**  
**FULLY INSURED**  
**07810 897076 scrivensplumbing@aol.com**



### **K & M LEWSEY LTD**

plumbing & heating engineers  
*established 1969*  
Registered plumber  
Gas ACOP approved engineers  
**01303 264535**  
manned office  
daytime Monday to Friday

Total garden care for all your needs

### **TIM MILLETT**

Grass Maintenance, General Gardening, Small & Medium  
Size Tree Work, Stump Grinding and Wood chipping  
Fencing Repairs & New Installations  
Turfing, Hard & Soft Landscaping  
Free Estimates - Fully Insured  
**01303 863676 07752 880583**  
**Email: info@tmhorticulture.co.uk**



**Respiratory**  
**Rehab**  
Bringing health home

Providing private community respiratory  
physiotherapy, general physiotherapy and  
rehabilitation to East Kent

**T:** 07904482097  
**E:** kris@respiratoryrehab.co.uk  
**W:** www.respiratoryrehab.co.uk

**Kris Bahadur. Chartered Physiotherapist.**  
MSc Physiotherapy, BSc (Hons), MCSP, SRP

### **N.P.C.**

#### **Domestic Appliance Services**

Service and repair of washing machines, tumble driers,  
dishwashers, cleaners and small electrical work. For a  
prompt and friendly service

Call Neil Collard 01303 892234 or 07798716044  
or [www.npcdomesticapplianceservices.co.uk](http://www.npcdomesticapplianceservices.co.uk)

**Auto Economy Centre**  
**Fully equipped Mechanical Repair & Service Centre**  
**with the latest diagnostic equipment**  
**MOTs £39.95**

**01303 863656**  
**Orchard Garage, Canterbury Rd, Etchinghill**  
**[www.autoeconomycentre.com](http://www.autoeconomycentre.com)**

### **Old English Pine**

Antique, repro pine, oak and French-style painted furniture with beautiful and reasonable priced accessories to make  
your house a home. Bespoke pine units made to order. Huge shop - over 3 floors. Open 7 days a week.

**Tel: 01303 248560 [www.oldenglishpineinkent.co.uk](http://www.oldenglishpineinkent.co.uk) 100/102 and 90 Sandgate High Street, Sandgate**



**Lyminge  
Country  
Bakery**

**01303 720126**

www.lymingecountrybakery.co.uk  
baker@lymingecountrybakery.co.uk

A Selection Of Our Produce

- Traditional Loaves • Low GI Bread • Sweet Products
- Mini Loaves • Artisan Bread • Baguettes
- Specialty Loaves • Savoury Products • Bakery Specials

## ✂ SNIPPERS & CLIPPERS ✂ UNISEX HAIR SALON

**LYMINGE SALON**

Facial Waxing : Gents Welcome : Shellac Nails  
Free WiFi : Appointments not always needed

01303 647222 : info@snippersandclippers.co.uk  
Station Road, Lyminge, CT18 8HP



## Local Bookkeeper

Sole Trader & Small Business Accounts  
VAT, Self Assessment, Payroll, CIS  
& General Administration Services



Call or e-mail:

Tel: 01303 864229 Mob: 07702 321686

e-mail: tash@bestbookwork.tax

www.bestbookwork.co.uk



## T. Metcalfe Fencing Contractors

Approved Expert Installer for Jacksons Fencing  
Established over 30 years  
Fully insured - Highly experienced teams



Panel fencing, gates, decking, pergolas, post & rail,  
stock fencing, security, landscaping & tree surgery.

**01303 840201 07790 290 155**

metcalfefencing@btinternet.com

Proprietor - Derek Burr,  
Ash Ridge House, Elham



## KENT & SUSSEX HOLIDAY COTTAGES



With over 250 properties in this region and an expert local team, call now to book your  
2015 break or to talk to one of the team about letting your property for holiday rentals.

— 01304 619 444 —

www.kentandsussexcottages.co.uk info@kentandsussexcottages.co.uk

12 King Street, Sandwich, Kent CT13 9BT

## DO YOU NEED HELP IN YOUR GARDEN ?

Sean Godden can do all those jobs that take up your spare time.

Weeding - turf laying - lawn cutting/edging

Hedge/tree maintenance – waste tip runs

Fence & decking painting/treating

Brick, pathway cleaning.

TEL. 07538988914 – Email 'sgodden@hotmail.co.uk'

## Essential Beauty

*reflexology : aromatherapy : collagen mask facials  
non-surgical perfector : facials : cuccio gel varnish  
manicures & pedicures : waxing & eyelash/brow tinting*

Therapist with 20 years experience

Call Janene Moat 01303 840052

The Limes, High St, Elham.

Free eyebrow tidy for new clients.

## Quality Cat and Dog Food from **OSCAR**

Free delivery to your door. Honest label, no additives  
or animal derivatives. No minimum order or contract.  
Expert advice available.

Call **Laurence** on **01303 777888** to  
discuss your supplies and for a free  
sample of cat or dog food.



## SEATHWAITE BOARDING CATTERY LTD.

Supporting Rhodes Minnis Cat Sanctuary

GREEN LANE, RHODES MINNIS, CT4 6XUTEL: 01303 862243 (Registered charity 262245)

**ONLY CATS BOARDED, IN QUIET COUNTRY LOCATION**

Individually heated chalets. Single cat £7 per day, a reduction  
for 2 or more cats. All cats boarded with us must have current  
vaccinations against cat flu & feline enteritis. All profits from the  
boarding cattery go to support homeless cats in the Sanctuary.

### RHODES MINNIS CAT SANCTUARY

has a wide variety of cats available to caring homes.

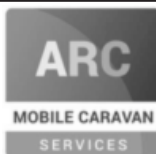
## Alan Croucher Caravan Engineer

Have your Caravan, Motorhome, Horsebox or  
Trailer serviced without the fuss of taking it  
to a workshop.

**www.arcmobilecaravanservices.com**

**Mobile: 07921 480919 Home: 01303 863194**

\*Non mechanical only on motorhomes and horseboxes



## East Kent Foot Care

Mobile Foot Health Practitioner

**Jo Shapter** BSc (Hons), MCFHP, MAFHP

Treating and managing common foot problems,  
corns, callus, verrucae, thickened nails,  
toe nail management, fungal problems,  
diabetic foot assessments etc.

**Call: 07745 532075**

Member of the British Association of Foot Health Professionals



## VICTORIA'S HAIR AND BEAUTY SALON 2 Cullings Hill, Elham, CT4 6TE

MANICURES / PEDICURES / SHELLAC / MASSAGE / TINTING / TANNING / FACIALS / WAXING / HAIR / MAKE UP  
WEDDING PACKAGES / PAMPER PARTIES / BESPOKE PAMPER PACKAGES / GIFT VOUCHERS

01303 840 931 / www.victoriashairandbeauty.com