

# THE LYMINGE NEWSLETTER

For the communities of LYMINGE, ETCHINGHILL, RHODES MINNIS and POSTLING

<http://www.lyminge.org.uk/>

**October 2015**

Produced by  
**THE LYMINGE ASSOCIATION**

**PRESENTING**  
**CHRISTMAS DAY LUNCH CLUB**  
MAKING CHRISTMAS DAY ALONE A THING OF THE PAST  
[WWW.CHRISTMASDAYLUNCHCLUB.CO.UK](http://WWW.CHRISTMASDAYLUNCHCLUB.CO.UK)  
**AUCTION OF PROMISES**  
THREE COURSE ITALIAN MEAL  
LIVE MUSIC  
ETCHINGHILL VILLAGE HALL  
31ST OCTOBER  
7PM  
TICKETS £10  
AVAILABLE LAING BENNETT  
FOR DETAILS CALL 01303063256

## Firework Display

**Children's show – 6.30 pm with main show - 7.30pm**

**£12 FAMILY OF 4**  
**£5 ADULT**  
**£3 CHILD**

**HALLOWEEN  
NIGHT**

**- 31ST OCTOBER 2015 -  
LYMINGE VILLAGE HALL**

**BBQ FOOD  
AND DRINKS  
AVAILABLE**

**Plus children's halloween tea party see website for more details.**

**Advance booking at [lymingevillagehall.co.uk](http://lymingevillagehall.co.uk) with free Glow sticks!**  
**and in person at Lyminge branch of Laing Bennett.**



## LYMINGE PARISH CHURCH SERVICES & ACTIVITIES

Church Website: [www.lymingechurch.co.uk](http://www.lymingechurch.co.uk)

E-mail: [office@lymingechurch.co.uk](mailto:office@lymingechurch.co.uk)

- Sun 4<sup>th</sup> Oct**      **8.00am Holy Communion**  
**11.00am Joint Harvest Festival Service**  
**in the Methodist Church**  
*followed by lunch in Tayne Centre*
- Wed 7<sup>th</sup> Oct**      7.00pm Holy Communion (*short said*)  
 7.30pm Open House Bible Study & Discussion  
*Coffee served from 7.20pm*
- Sun 11<sup>th</sup> Oct**      **8.00am Holy Communion**  
**11.00am Sung Eucharist**
- Wed 14<sup>th</sup> Oct**      7.00pm Holy Communion (*short said*)  
 7.30pm Open House Bible Study & Discussion  
*Coffee served from 7.20pm*
- Sun 18<sup>th</sup> Oct**      **11.00am Family Service** with Children's Corner  
**6.00pm Evensong**
- Wed 21<sup>st</sup> Oct**      7.00pm Holy Communion (*short said*)  
 7.30pm Open House Bible Study & Discussion  
*Coffee served from 7.20pm*
- Sun 25<sup>th</sup> Oct**      **8.00am Holy Communion**  
**11.00am Sung Eucharist**  
**NO Messy Church this month**
- Wed 28<sup>th</sup> Oct**      7.00pm Holy Communion (*short said*)  
 7.30pm Open House Bible Study & Discussion  
*Coffee served from 7.20pm*

### ACTIVITIES THIS MONTH

#### Mothers Union

Wednesday 14<sup>th</sup> October 10.30am  
 In the lounge at Nailbourne Court  
*Please contact Sue on 862221 for details*

#### Ethelburga Luncheon Club

Thursday 15<sup>th</sup> October meeting at 12.00 noon  
 at the Coach and Horses

*Please contact Lynne 863010 if you are interested and/or need transport*

#### Coffee Morning in Wentworth Close Lounge

Wednesday 21<sup>st</sup> October from 10.00am to 11.30am  
 In the lounge at Wentworth Close (entrance via the car park)  
*Please contact Lynne on 863010 or Loraine on 863216*

#### Prayer Shawl Knitting Group

Wednesday 21<sup>st</sup> October from 2.30pm at 26 Nailbourne Court  
*This group meets to pray and knit shawls for those suffering from ill health or bereavement*  
 New members are always welcome  
*Please contact Madelaine 863582*

## PADDLESWORTH PARISH CHURCH SERVICES

- Sun 4<sup>th</sup> Oct**      **NO SERVICE**  
**Sun 11<sup>th</sup> Oct**      **9.30am Holy Communion**  
**Sun 18<sup>th</sup> Oct**      **NO SERVICE**  
**Sun 25<sup>th</sup> Oct**      **6.00pm Evensong**

*"There are amazingly wonderful people in all walks of life; some familiar to us and others not. Stretch yourself and really get to know people. People are in many ways one of our greatest treasures." — Bryant H. McGill*

## LYMINGE METHODIST CHURCH

Visitors are very welcome to join us at our weekly service at **11am** and invited to share fellowship afterwards with a cup of coffee/tea.

- 4 October**      United Harvest Festival  
**11 October**      Mr Dudley Shipton  
**18 October**      Mr Ralph Bradshaw  
**25 October**      Rev. Kevin Taylor (inc. Holy Communion)  
**1 November**      Mr Hugh Burnham

## RHODES MINNIS CHURCH

This small Chapel in beautiful countryside holds a weekly Sunday Service normally at 9.30am followed by coffee and biscuits. A warm welcome is extended to any visitors.

- 4 October**      Harvest Lunch at 1pm followed by a Service all in the **village hall**. Please pre-book lunch on 01303 862865  
**11 October**      Mr. Richard Blackwell  
**18 October**      Mr. Ralph Bradshaw (united service with Elham Methodists)  
**25 October**      Rev. Kevin Taylor (inc. Holy Communion)  
**1 November**      Mr. Hugh Burnham

## POSTLING CHURCH SERVICES

- 4 October**      6pm Harvest Festival Evensong  
**11 October**      9.30am Family Service  
**18 October**      8am Holy Communion  
**25 October**      9.30am Family Communion

## CHRISTIANS IN LYMINGE

- 5th Oct**      11am Combined Harvest Festival in the Methodist Church.  
**10th Oct**      Afternoon Tea Concert, Tayne Centre at 3pm  
**17th Oct**      Saturday Market in the Tayne Centre  
**8th Nov**      10.45am The Act of Remembrance will take place at the War Memorial followed by a combined service in the Parish Church.  
**13th Nov**      Music on Friday in the Parish Church

## Lyminge Newsletter

### Terms & Conditions. Copy deadline is 18th October

Please email your copy in to the editor ([pb@pbarnes20.plus.com](mailto:pb@pbarnes20.plus.com)). Your payment must be received before your article or advert can appear in the Newsletter. Please leave your payment along with your name, organisation, telephone number and copy of your ad in a sealed envelope at the Lyminge Post Office or at the Lyminge Library. Business adverts cost £9.50 per month or £95.00 per year. Personal and charity adverts and articles from £3 per month, or £30.00 per year. The annual rate offers 12 entries for the price of 10. Please make cheques payable to **'The Lyminge Association'**. If you do not have email, a typed paper-copy can be left with the payment.

Lyminge Association accepts no liability for the accuracy of the advertisements or subsequent actions arising in conjunction with advertisers in the newsletter.

**Further details from Peter (editor) on 01303 863737**



# News from The Lyminge Association

## Lyminge Association AGM

Monday, 5th October - in the Dining Room at the Coach & Horses. Do come along and see what your Association has been doing for the past year and maybe add to our plans for next year !

**CHRISTMAS LIGHTS** - As in previous years we have asked Father Christmas to take a break from his Christmas preparations and come along to Lyminge to switch on our lights on the big tree outside Laing Bennett. Lyminge Primary School singers will be coming along to sing some Christmas Carols to add to the festive atmosphere. The date is Thursday 19th November starting at 5pm

The Lyminge Association will also be providing the small trees and lights along Canterbury Road and Station Road. If you live in either of those roads and would like to have one of the special brackets to join in with making our village even more festive, please call Adrian on 862699. The bracket, lights and tree are all provided to you free of charge !

## Lyminge 2016 Calendar ~

The entries for the Photographic Competition are now all in - thank you to all those who entered. We hope that we may have the Calendar ready by the AGM, but keep an eye on the Lyminge Association noticeboard in the Post Office car park !

*Thank you* to everyone who joined in with the recent Garage Safari. We hope that your sales in the early part made up for the disappointing weather later on. Any profit made by the Association will be put back into the villages through donations to groups and village projects.

## Christmas Delivery Service

Once again we have made arrangements for Father Christmas to come to the area to make special deliveries on Monday 21st December. For those who do not know about this special service there will be full details in next month's Newsletter.

## BUZZLINES FOR YOUR LOCAL DEPARTURES

A sample of our upcoming programme. This isn't the complete list - lots more on-line. Ask for child prices and large group discounts. Pick-ups in Elham and Lyminge. Home pick-ups for any tour of over 2 nights.

### Day Trips

Sat 17 Oct	Greenwich Maritime Museum, Royal Observatory & Queen's House	£25
Sat 17 Oct	Westfield Stratford Shopping Centre	£25
Sun 18 Oct	Bruges	£39
Tue 20 Oct	Bluebell Railway & Sheffield Park Gardens	£43
Wed 21 Oct	Chatham Historic Dockyard & Rowland Hilder Exhibition	£29.50
Wed 21 Oct	Cite Europe & Belgium Continental Shopper	£35
Thu 22 Oct	Apsley House, Wellington & Afternoon Tea	£50
Thu 22 Oct	RHS Wisley Gardens	£37
Sat 24 Oct	Chessington World of Adventures	£50
Sat 24 Oct	London Shopping & Covent Garden	£25
Sat 24 Oct	The Crime Museum Uncovered at the Museum of London	£35
Sun 25 Oct	Windsor Castle	£44
Sun 25 Oct	Royal Windsor	£29
Mon 26 Oct	Natural History, Science & V&A Museums	£25
Mon 26 Oct	Harrods & Knightsbridge Shopping	£25

### Tours

Mon 19 Oct	A High Old Time in the Low Countries	5 days	from £325
Mon 19 Oct	Warners Cricket St Thomas	5 days	from £429
Mon 26 Oct	Warners Littlecote House	5 days	from £419
Sat 07 Nov	Mystery Tour Weekend	2 days	from £99
Mon 09 Nov	Secret Santa Turkey & Tinsel	5 days	from £339
Sat 14 Nov	Love You & Leave You! Paris Explorer	8 days	from £325
Fri 20 Nov	A Weekend in the West End	2 days	from £189

Christmas Market trips start from mid November and run weekly! Please see online or call the sales team for full details of these and other tours and excursions [www.buzzlinestravel.co.uk](http://www.buzzlinestravel.co.uk) 01303 261870

### **News from Age UK Lyminge...**

With Autumn creeping on why not join us for something in our new activity programme? Morning sessions run from 10.45am to 12pm (unless otherwise stated).

On Monday mornings choose from Cookery or our new Relaxation group, featuring aromatherapy, breathing techniques and meditation – all great ways to try to reduce your blood pressure!

It's our ever-popular Art group or, for the more energetic, Chairbics, on Tuesday mornings.

On Wednesday mornings Line Dancing and Musical Bingo are on alternate weeks, and on the last Wednesday of the month you can Sing For Health. From September to December you can come and make your Christmas Cake.

Our new Book Group is on Thursday mornings – an opportunity to enjoy a good book with others. Read aloud, if you are feeling theatrical! And discuss the book with the rest of the group afterwards. On the first Thursday morning of every month you can join in Communion.

On Friday mornings choose between Seated Exercise and a new Walking group - transport is provided to a location where an hour's walk is undertaken, return by 12.30 for lunch.

In the afternoon (1.30 – 2.30pm) activities are varied daily and include bingo, musical bingo, scrabble, cards, Countdown or singing. Other activities are also available at all other times to suit those in attendance, these include: quizzes, group crosswords, wobbly knockers, musical bingo, cookery, scrabble & board games,

And why not stay for lunch? Delicious two-course lunches can be booked before 10.30am. Fluffy jacket potatoes are always available as an option to the set menu.

For more information about any of our events or services please call 01303 269602 or email [co@ageukhl.org.uk](mailto:co@ageukhl.org.uk) or come and say hello in person – we are at Everist Court, Station Rd, Lyminge, CT18 8HQ. Full information available at [www.ageuk.org.uk/hytheandlyminge](http://www.ageuk.org.uk/hytheandlyminge) (including daily menus for the next two weeks) and you can find us on Facebook (AgeUKHytheAndLyminge) and Twitter (@ageukhl)

### **ETCHINGHILL RESIDENTS' ASSOCIATION**

### ***Etchinghill Update October 2015***

Come along to the Open Mic Event on Saturday 10th October at the Village Hall. £5.00 per adult all proceeds in aid of charity. All ages welcome – you can either perform or just come and watch and give the performers your support. To book a table or an entertainers slot contact Dave or Geraldine on 01303 863164.

**Calling all litter pickers!** If you like to see the village looking spick and span, please join us on Saturday 17th October, 10 a.m. at the Village hall. Refreshments and equipment will be provided. We were fortunate to have lots of volunteers at the Spring litter pick and we look forward to seeing you again, plus perhaps some new faces. Even just an hour of your time can help to make a difference to help keep this lovely environment looking great.

**Etchinghill Cinema Club** is showing the film "MY OLD LADY" (12A) on Monday, 19th October, at the Etchinghill Village Hall, doors open at 7.00 for 7.30 pm start. This is an exciting drama, starring Maggie Smith, Kevin Kline and Kristen Scott-Thomas. Everyone is welcome at this friendly, relaxed community event, so why not come along. Membership is free (you may join on the night) and the entrance fee of £5.00 includes admission, refreshments and a lucky draw ticket. Film shows take place every third Monday of the month. For further information, please contact Lorraine on 01303 863333."

### **ETCHINGHILL VILLAGE HALL**

**OPEN HOUSE:** Monday 5th October Christopher Russell and "Caterwaul" (tales of the Rhodes Minnis Cat Sanctuary). Open House every Monday 10.00 – 12.00 come along for coffee and a chat and join in the activities available on the day.

**FARMERS MARKET:** the first Saturday of the month between 10.00 and 12.30. The winner of the raffle at the September market was stall holder Joanie with ticket number 265.

### **PHOTOGRAPHIC COMPETITION**

Congratulations to Beth and Lauren Baker for a very successful event. We should be proud of the youth in Etchinghill for organising this. The winners were Hew Ethell (under 12), Abi Baker (under 17) and Terry Rawbone (adult).

### **TREES IN THE VILLAGES OF KENT COMPETITION**

Cllr Colin Manvell has accompanied a judge around our hamlet. In truth we do not have many outstanding trees which would wow any judge! What did come out of this visit was the number of ash trees that have been blighted by the "die back" disease that is affecting these trees at the moment. It would appear to be most prevalent along the old railway track, and along the Tolsford Mast roadway. That is not to say individual trees elsewhere are not also affected. At some time in the future these will have to be cut down. Not good news for tree lovers.

## District Councillors Report - September 2015

Are there any homes in our district that you know of that have been sitting empty for six months or more? In 2014 there were 798 houses in the Shepway area identified as long-term empty. Kent County Council has a Kent-wide scheme called 'No Use Empty' where interest free loans of up to £25,000 per unit are made to help owners get difficult properties into a fit state to be sold or let. Shepway's housing team work with KCC on this initiative and in the last two years 11 loans totaling £1.3 million have been made in our district and (with investment from the owners themselves) this has brought 42 long-term empty homes back into use.

Shepway's housing team contacts the owners of all known long-term empty properties to encourage them to bring them back into use and this simple action is surprisingly effective in prompting an owner to sell or let their property. At the other extreme of intervention, we can (as a last resort) force a sale where there is unpaid council tax and there was one instance of this in the last two years. On top of this, ten long-term empty properties were bought by the council's housing association partners to let to local people.

The improving economy and low interest rates have also helped bring down the number of long-term empty properties and there are now just 612 long-term empty houses on the list and we know that 73 of these have plans to be brought back into use over the next 12 to 24 months. We believe we can reduce this number even more and at the September meeting the Shepway District Council cabinet we agreed plans to bring at least 70 long-term empty properties a year back into use. We intend to buy some of these properties for renovation, targeting areas where there are multiple long-term empty properties. We will use empty dwelling management orders (EDMOS) where owners fail to bring forward viable proposals. Use of compulsory purchase orders and EDMOS will be a last resort as these are lengthy and costly processes and there is much we can do without resorting to draconian measures. We will also be boosting the KCC No Use Empty scheme by topping up it up to £40,000 per unit as there are at least 20 long-term empty properties already identified as viable for return to use with this level of funding.

We all know we need more homes for people and bringing long-term empty properties back into use is one way to meet this need. If you want to report a long-term empty property or are interested in the No Use Empty scheme, please let us know.

As well as the Stream Clean in Lyming on 03 October there will be one in Elham on Saturday 17 October starting at 10.00am at Water Farm off Duck Street so if you'd like to help keep the Nailbourne flowing, please come along.

The situation with measures to deal with Operation Stack changes week by week but we expect the Government will have made announcements at the end of September and we will update you when we know more.

**Jenny Hollingsbee** (jenny.hollingsbee@shepway.gov.uk 07887918458)

**Susan Carey** (susan.carey@shepway.gov.uk 01303 670561) - Ward councillors for North Downs West, Shepway District Council



### Lyming Friends

In September, Ian Porter talked about the lives of servants in The Real Downton Abbey and Upstairs Downstairs. It made us realise just how tough life was before WW1 and how lucky we are to live today. We were also looking forward to our Cream Tea in the Elham Valley Vineyard on the 16th.

In October, on Wed 7th we have a visit from Wing Commander Simpson from the Battle of Britain Memorial in Capel Le Ferne. On Fri 9th we have our Curry Night in the Gurkha Palace and on Wed 21st we are going to the Yesteryear Museum in Battle with lunch in Jempson's of Peasmarsh.

On Wed 4th November we have a return visit from Don Wilks and this time his subject is South Africa and on Wed 18th we will do a little Christmas shopping.

Meetings are 10.30 - 12.30 in the Rigden Room, Tayne Centre. Entry is currently £2.00 and includes refreshments. We are a friendly social group and welcome new members. If you'd like to talk to one of us first, please call 863500

### Rhodes Minnis Evening Circle

Alan Haines was the speaker at our September meeting. He entertained us with music & stories of events from the 60's, and caused much merriment with his magical tricks - a most enjoyable evening! The winner of the competition was Diane Potter, with Daphne Andrews 2nd, Pauline Hodder 3rd and Ronnie Mozley 4th. In October our speaker will be Rosemary Piddock presenting "Oranges & Lemons. We meet at Rhodes Minnis Village Hall at 7.30pm and everyone is welcome. For further details please contact Diana Bennett on 862134.

#### Rhodes Minnis Evening Circle COFFEE MORNING

#### CHILDREN IN NEED

TAYNE CENTRE - 24th October

We're supporting



**BBC**  
**Children**  
**in Need**

10 to 12 noon  
Cakes, Tombola,  
Refreshments  
Teddy Bear Competition  
Free Entry

#### Rhodes Minnis Village Hall AGM

Tuesday 20th October 2015

7.30pm in Village Hall

Everyone who uses or has an interest in what happens in the hall are very welcome to attend the meeting. We will be very happy to welcome you. Tea/coffee and biscuits will be served.



## theWI INSPIRING WOMEN

Members and one guest were welcomed by Barbara Syrett to the September meeting. Birthday posies were presented to Sylvia Clark, Doreen Brown, Janet Hooles, Joan White and Mavis Hodson. John and Rosemary Piddock were thanked for the coffee morning held at their home in August which was enjoyed by all who attended.

Our speaker, Sandra Richards, spoke about the humorous side of district nursing which was most entertaining and was accompanied by lots of laughter as she told us about her experiences.

The competition winner for a medical item was Rosemary Piddock. We then enjoyed a great tea, the hostesses being Mary Hickmott and Gill Le Cras.

The next meeting will be our 93rd birthday celebration on Tuesday, October 20 at 2.30pm in the village hall. Further details about the W.I. meetings can be obtained from Barbara Syrett on 01303 265229 or Rita Warner on 01303 863503

## ROUNDWOOD HALL PAY & PLAY GOLF CLUB

Behind the line of conifer hedges on Stone Street (B2068) you will find a friendly & welcoming short golf course.

9 holes - £8.00    18 holes - £12.00  
£2 more at Weekends & B/H

Stone Street, Lyminge  
Folkestone, CT18 8DJ  
01303 862260

Fantastic new  
membership  
opportunities



FRIENDLY    RELAXED    AFFORDABLE  
[www.roundwoodhall.co.uk](http://www.roundwoodhall.co.uk)



## Lyminge Historical Society

Tuesday, 3rd November 2015  
7.30pm

THE TAYNE CENTRE  
A talk on

### "The Romans Are Coming!"

Speaker: Dr Lesley Hardy

New members and visitors are welcome.  
Members: £10 per annum inclusive of talks  
Visitors: £4 per person payable on the door

Tea and biscuits will be served.

**Lyminge Historical Society**  
**Mobile Tel. No. 07759 260816**  
**Website: [www.lymingehistoricalsociety.co.uk](http://www.lymingehistoricalsociety.co.uk)**

## CANTORES

Your local choir - charity no: 1087409

### Dates For Your Diary

Saturday 14th November 6.00 pm

### AUTUMN CONCERT

St Pauls Church, Sandgate Hill, Sandgate

Friday 18th December 7.30 pm

### AN EVENING OF CHRISTMAS MUSIC

Sibton Park, Lyminge  
Concerts in support of our Annual Charity  
Jessie's Fund

## SATURDAY MARKET

17th October

9am 12 noon

**TAYNE CENTRE**  
**CHURCH RD LYMINGE**

New for October - local baker  
with bread, pies, etc.

Come for breakfast or a chat.

Bacon or sausage in a roll

Teas coffee



## 1950's Vintage Cocktail Bars & Barware for hire

Perfect for:

**birthday parties**  
**drinks receptions**  
**weddings**  
**cocktail evenings**

Contact Anita  
07771 874308 or 01303 487505  
To find out more, visit  
<http://howipartied.com>

## For Sale Mixed Seasoned Logs

**Large truckload NOW £80**

**Free delivery**

**Tree surgery/stump removal  
also undertaken.**

**Call 01227 709562**

## Lyminge Weather Statistics – August 2015

With thanks to Mr D. Godden for these weather statistics and notes.

	Temperature (°C)	Air Pressure (hPa)	Wind Speed (mph)	Total Monthly Rainfall
Maximum	30.3 (23/08/15)	1021 (07-08/08/15)	25.0 SE (25/08/15)	170.8mm (6.72 in)
Minimum	9.2 (08/08/15)	1000 (07-08/08/15)	Highest Daily Rainfall	38.0mm (1.50in) (24/08/15)

A cooler and wetter month than average. Notably most rain fell on three days in August – 38mm on 24th; 31mm on 13th & 26mm on 25th with 26mm falling in 28 minutes (11.15-43am) on 13th.



### Adult Swimming with Hythe Aqua

- Can you swim lengths (25m)?
- Are you between 17yrs and 70yrs++++
- Do want to improve your swimming skills?
- Do you want to improve your fitness?

We can help you improve under the direction of our experienced Swimming Coaches. You may want to simply improve your swimming skills and fitness, or even take part in competitions such as Masters Swimming, Triathlons or Open Water – we can help.

Two sessions available each week, starting session Fridays at 8.00pm – Hythe Pool.

To book your place phone: 01303 862353 or checkout our website: [www.hytheaqua.org.uk](http://www.hytheaqua.org.uk)

## Park House Sanctuary Boarding Kennels & Cattery

Park House, Stelling Minnis CT4 6AN

Brick-Built Heated Kennels ~ Daily Walks

Reasonable Rates ~ All dogs must be fully inoculated  
Heated Cat Chalets ~ Quiet Area Inspection Invited.

To book or for further information, call  
01303 862622 or email [lord.whisky@btinternet.com](mailto:lord.whisky@btinternet.com)

[www.lordwhisky.co.uk](http://www.lordwhisky.co.uk)



## Lyminge Handbell Ringers

The **Lyminge Hand Bell** group continue to introduce new music so look forward to the opportunity of playing these new pieces locally, so please consider booking us for your special celebration. You can come and hear us play before booking if you wish so you can select your own choice of music. We have an increasingly wide selection to choose from. All we need at the venue is a large table for our bells and music, room for up to 12 players and a minimum donation of £40 for our charity, the Nepali Children's Trust. A small contribution to travelling costs is also appreciated for bookings more than 5 miles from Lyminge. Weekends and evenings only please and plenty of advance notice is helpful. Want more info or make a booking? Call **Ro Edmond** on 863201 or email [welldorm@aol.com](mailto:welldorm@aol.com)

## Rhodes Minnis Village Hall

### Beetle Drive Friday 23<sup>rd</sup> October

at the Hall 7.30pm

Adults £2 – Children 50p

*Teas, coffee and juice provided*

*There will also be a raffle*

New players welcome to come and join  
in this old fashioned fun evening

## Coach & Horses



### Senior Citizens 2 course meals available

Monday - Saturday £7.50

### Friday Food Theme Nights - £9.95

2nd October - Mexican

9th October - Italian

16th October - Indian

23th October - Polish

### Sunday Carvery 12-4pm (Booking Advised)

Choice of 3 meats with freshly cooked trimmings,  
vegetarian options also available - £9.95

### 31st October - Live Rugby World Cup Final from 4pm

Followed by LIVE MUSIC by Gary Dean from 8.30pm

**Bookings and Contact: 01303 862694**

Love your music? Need a fun night out?

Come along to...

## Musical Bingo!

**Friday  
23rd October  
7.30pm**

Lyminge Village Hall

Prizes for Best Music themed  
**Fancy Dress**

raffle and lots more!



For tickets email: [lymingepreschoolfundraising@gmail.com](mailto:lymingepreschoolfundraising@gmail.com)

All proceeds go to Lyminge Pre-School

Registered Charity No: 1029226



# THE ROYAL BRITISH LEGION

Elham Valley Branch

## **The 2015 Poppy Appeal**

24th October-7th November

We thank you for supporting this worthy cause as there is an ever-increasing need to care for our troops and their families. If you would like to help, please contact 01303 862779

### **Results of**

### **Etchinghill Photographic Competition**

The first photo competition organised for the Etchinghill and local area residents by junior committee members Bethany Baker and Lauren Hickman, was judged on Saturday 3rd September at the monthly Etchinghill village market. Photos included wild life, flowers and local scenes. The winners by receiving the most votes were:

**6 -11 yrs Hew Ethell : 12 - 17 yrs Abi Baker :18+ Terry Rawbone**

A certificate and voucher was presented to each winner.

This was the first event that Bethany and Lauren had organised on behalf of the Etchinghill Village Hall Committee, and they deserve every praise for the excellent way they organised and completed the task.

We hope the girls enjoyed organising the event as much all those taking part enjoyed it. If they are up for the challenge, we will all look forward to next year's competition.

**John White - Chairman, Etchinghill Village Hall.**

## **ELHAM VALLEY AND WYE LIONS CLUB CHARITY QUIZ**

### **Etchinghill Village Hall**

Saturday 24th October 7 for 7.30pm

Max. Tables of 8 - £5 per person

Bring your own food, bar provided.

In aid of our Charity Trust fund for local good causes.

Call Chris Hills 0794 174 4711 to book.

## **Halloween Party**

For pre-school and primary aged children

Sat afternoon - 31st Oct



Lyminge  
Village Hall



Fancy dress, party food & games, face painting,  
best pumpkin prizes and much more!

Look out for more details, coming soon!

For tickets email: [lymingepreschoolfundraising@gmail.com](mailto:lymingepreschoolfundraising@gmail.com)

All proceeds go to Lyminge Pre-School  
Registered Charity No: 1029226



### **MUSIC ON A FRIDAY....**

...wishes to thank ENDLESS KNOT and our helpers and supporters, for making yet another successful BBQ/music evening on Friday 7th August

Our next **Music on a Friday** will be on 13th November with a musical extravaganza, free mulled wine and mince pies.

Please contact Roger on [rogergoody@tiscali.co.uk](mailto:rogergoody@tiscali.co.uk) if you would like to sing or play at one of our musical evenings, we would love to hear from you.

## **THE TAYNE CENTRE**

We have an Autumn fund-raiser to help ensure that we have sufficient funds to refurbish our Clayson Hall:



**10th October  
at 3.00**



### **Afternoon Tea with Entertainment**

Listen to Dave and Maggie, The Hoskins Duo, join in some songs and enjoy an afternoon tea, all for £4

## **New Season's Hay**

Traditional small bales

Best quality - barn stored £3.50 each

FREE local delivery for 10+ bales

Call Richard: 01303 840733 or 07970 804466

Grimsacre Farm, Elham

[www.grimsacrefarm.co.uk](http://www.grimsacrefarm.co.uk)

## **need help?**

Personal care and care in the home all catered for by a fully qualified assistant/carer.

Sensitive, sympathetic and kindly caring guaranteed. Fully insured. References can be supplied.

**Contact Kim on 01233 632532 or 07841 757268**



## **Lyminge Dramatic Society**

Lyminge Dramatic Society will be presenting

**'A Christmas Present.....Past and Future'** at Lyminge Village Hall on Friday 4th and Saturday 5th December at 7.30pm. This is an entertainment with a mixture of prose, poetry, music and humour which celebrates all aspects of Christmas.

There will be table seating and tickets at £6 will be available from Laing Bennett in Lyminge ( more details in next month's newsletter). Bring your own food and a bar will be available.

If you have a spare moment look at our website:

[lymingedramaticsociety.co.uk](http://lymingedramaticsociety.co.uk) and view pictures of our Venetian Fete float. If you would like to join our welcoming and friendly Lyminge Dramatic Society please contact Alex on 01303 862622.



## Lyminge Library Macmillan Coffee Morning

A big thank you to all of those that contributed either to donating prizes for the raffle or by making or buying many of the cakes available. The children also had a great time with the face painting and other activities available.

So far we have raised a fantastic **£433.15**

Once again Thank You from the team.



**ETCHINGHILL RESIDENTS' ASSOCIATION**  
**Etchinghill Cinema Club**

**"MY OLD LADY" (12A)**  
Monday, 19th October  
Etchinghill Village Hall at 7.15pm  
Entrance Fee £5 per head  
includes Membership  
FREE Refreshments and Raffle

**Lorraine 863333 for info**



**The Big Fat Christmas Quiz**  
Saturday 5th December 7pm  
Etchinghill Village Hall

**£3 Per Person, includes Crackers : Tables of up to 6 (max)**  
**Bring Your Own Refreshments**  
**Please Book Early (Full House Last Year)**  
Phone Sylvia on 01303 863647 or John on 01303 863819  
**All Proceeds to the maintenance of The Village Hall.**  
**For further information phone John 01303 863819**

**THE ETCHINGHILL MARKET**  
**Saturday 3rd October**

Come along and shop at our food and craft stalls, including home made jams & cakes. Also aromatherapy products, handmade jewelry and wood turning. Or enjoy a bacon roll & a cup of tea.

**Etchinghill Market is the place to be**  
Saturday 3rd October and every first Saturday of each month from 10am  
**Etchinghill Village Hall**

**For further details contact John on 863819. Charity No. 302736**

## PUBLISHER'S ASSISTANT

Part-time help needed with the arts magazine

**'Folkestone and Hythe Creative'** -

now based in Lyminge.

Wages to be agreed.

Contact  
Nicholas at  
60 Silverlands  
Road, or call  
862118

# DARE TO BE SCARED

Head down to Springside Terrace, Lyminge, this Halloween and seek out Rectory Hollow!

**31st October !!!**

*Donations will be welcome towards Lord Whisky Animal Sanctuary on the night. Find us on Facebook, 'Rectory Hollow'.*



## VIDEO PRODUCTION MOTION GRAPHICS GRAPHIC DESIGN PHOTOGRAPHY WEB & EMAIL

At OCD we believe that what sets a business apart is its story.

We pride ourselves in creating content for your website and social media channels that engage and grow your audience.

From corporate videos and promotional films, animation and motion graphics to print and digital design, OCD have a combined 40 years experience producing creative content that is proven to increase conversion and drive sales.

Whatever your creative needs, OCD can tailor a solution to suit your budget. It all starts with a conversation. Get in touch and let us help you tell your business story.

**WWW.O-CD.CO.UK**  
**EMAIL: HELLO@O-CD.CO.UK**



## Looking for homecare services?

Our experienced Care Assistants are on hand to offer support to the elderly, people with a learning or physical disability or other care needs for home services no matter your needs -

- ✓ One call a day to multiple calls
- ✓ Short term or long term packages
- ✓ Home from hospital assistance
- ✓ General assistance or complex care
- ✓ Weekday, weekends, days, night call times




Contact your local branch today  
**01303 250200**  
**www.nurseplusuk.com**

Direct Payments Accepted

## Letters to the Editor.....

### *Lyndon Hall Field....*

I'm not sure if villagers are aware of plans for the field adjacent to Lyndon Hall. I've heard that the family of the late Mr Smith have asked for the field to be included in Shepway Council's plans for building sites along with plans for building 30 houses. The field is opposite Old Robus and I feel this field should be kept as open farmland to maintain the character of the village, aside from other considerations such as safe road access or lack of drain capacity etc.

I am hoping the Parish Council will be tracking this application and opposing it on our behalf. Signed: **A. Gledhill**

**Editor:** A response to this letter is published within The Parish Council page at the back of the newsletter

### *Lyminge Village Hall....*

I am a long standing resident of Lyminge, having lived here for over 30 years. In the September issue of Lyminge Newsletter I noticed that the new Lyminge Hall Management Committee had met. As I understand from people who attended the AGM, this committee was not formally elected but self-appointed. They say that the committee included a list of members but did not give a full list of members. Who are the other members and who is the Chairperson?

I also notice that 3 of the named members are associated with Lyminge Pre-School which uses the Village Hall from 8am to 6pm, Monday to Friday at what I understand to be a reduced rate in comparison to other venues in the area. Could there be a conflict of interest if hiring charges are discussed? The Hall is there for the benefit of the local Community but use of the hall by the Community at large is restricted to evenings and weekends, thus reducing the opportunity to create additional revenue. As the Village Hall is a registered charity, are they complying with Charity Commission guidelines concerning governance? Signed: **A concerned resident.**

### *Reply from LVH Committee (by invitation from the Editor)....*

The Village Hall Committee was properly elected in accordance with its own trust deeds. The previous trustees, except one, declined to stand for re-election. The vice chairman of the committee took the chair at the AGM as the chairman had left and accepted nominations from the parishioners. 9 names were put forward and as the governing document calls for the election of just 9 trustees these were properly elected by acclamation from the hall.

The new trustees are all parishioners of Lyminge and have lived here between 18 months and over 40 years. The names of the nominated trustees & chairperson were all given in the last newsletter and are also listed on the web site [www.lymingevillagehall.org.uk](http://www.lymingevillagehall.org.uk), together with 2 co-opted new members. Of the trustees, one is an employee of the pre-school. None of the other trustees have any formal affiliation to the pre-school; full details of the few trustees who have connections through marriage (2) or, like many members of the parish, have children at the preschool are available on the web site.

The trustees are totally in agreement that the hall is for the benefit of the local community and to this end, all parishioners are welcome at any committee meeting; see web site for details. It is true that access to the hall is limited during most weekdays and the new trustees are exploring options to resolve this longstanding issue. The hall is booked during term time days. If access is required this can be arranged via the booking line 0749 7625 741. In the meantime parishioners should note that the income from the preschool currently accounts for over 40% of total income without which the hall would be undoubtedly forced to close. Discussions are in progress with regard to future rental agreements.

We are very proud to be working for our community and thank all our members for their tireless work. Any concerns or queries should be directed to our Chairman or at one of our open meetings, details of which can be found on our website. Parishioners are of course welcome to raise any matters with the Charities Commission, our governing body. Sincerely **The Trustees of Lyminge Village Hall**

## Your Lyminge Village Hall News

[www.lymingevillagehall.org.uk](http://www.lymingevillagehall.org.uk)

### **Calling all Trades - LOVE YOUR HALL - DIY SOS**

Most of the hall is looking a little shabby. So the week starting Sunday October 26th has been booked out to enable a team of volunteers to undertake a renovation programme. Can **YOU** answer the SOS call? Please take a moment to check the web site and volunteer your services. There will be a video produced which will reflect your efforts and great contribution.

The program of works will be up on our web site – please take a look and, if you can, please offer your services and materials.

### **BONFIRE AND FIREWORKS NIGHT will be on Halloween - SATURDAY OCTOBER 31st**

Halloween and Fireworks night has been combined to one village event. This is an opportunity for all local organisations to get involved for their own fund raising opportunities. Trick 'n' treat is a special occasion for some children and we want to support them.– we therefore welcome all organisations to visit our web site and decide how they might be part of this major event. To start things off, the preschool is organising Halloween teas as well as a range of events at the hall for nursery and primary school aged children

Check the web site to see how your organisation can contribute (we currently need a ghostly ghoul to burn) and win prizes! Our front page advert has all the details. Bonfire lights up at 7.00pm.

### **HOBBY OPPORTUNITY**

Looking for a hobby? – how would you like to take on the hall as a hobby and maybe make a few pennies in the process? We are looking for a person, or persons in the Village who would like to take care of the building. Your involvement as part of the team would be really appreciated.



## Lyminge Gardeners' Society

Tuesday 20th October 2015  
Tayne Centre

### AGM

New ideas & new members most welcome  
Complimentary tea, coffee & cakes will be served  
*More details from Veronica on 01303 862464*

Rhodes Minnis Village Hall

## Table Top Fair

Saturday 10th October, 10am-2pm  
(Stall holders from 9am) Tables at £5  
To book, please ring 01303 863660  
Come along and have a browse  
Refreshments will be available

Rhodes Minnis Toddler Group

## Coffee Morning

Thursday 22nd October  
It will be held during the Toddler Morning  
10.30am-12 noon  
with cake stall and raffle. Everyone is welcome - please  
bring your friends. If you want to know more,  
call Elaine 01303 863096



## WINE TASTING

NOVEMBER 21ST 7PM  
ETCHINGHILL VILLAGE HALL

*Have an enjoyable evening while you sample a wide  
range of quality wines. Cheese board included.  
£10.00 per person in advance.  
£15 on the night.  
(Over 18's only)*

A wine expert will describe the various wines. All you  
have to do is drink them!  
There will be NO selling of wine on the night.  
Limited numbers; please phone to reserve tickets.  
**PHONE JOHN 863819, OR SYLVIA 863547**

Charity no 302736 (Any profits will go to the upkeep of Etchinghill Village Hall)

## In aid of the LORD WHISKY SANCTUARY FUND

(Registered Charity 283483)

Park House Animal Sanctuary

Stelling Minnis CT4 6AN. Tel: 01303 862622

### End of Year Boot Fayre & Clearance Sale

Saturday 10th October

at Park House, Stelling Minnis  
Boots from 8am - all boots just £5  
Refreshments ~ Admission by donation

Forthcoming Events:

### Autumn Bazaar

Lyminge Village Hall

Saturday 14th November 10am - 1pm

Tables £10 - to book, ring 01303 862622



### A Weekend of Traditional Apple Pressing & Food Fayre 10th & 11th October

Watch the art of traditional apple pressing and sample some freshly pressed  
juice - you may bring your own apples. Plus local honey & hand made  
preserves, herbalist soaps, specialist breads, amazing chocolate, delicious fudge  
and much more to tickle your taste buds.

**Friday 23rd & Saturday 24th October**

*Come and enjoy a Pre-Halloween Spooky Evening  
around the site*

Tickets available in advance from EVLT

### Festive Craft Fayre

**14th/15th and 21st/22nd November**

Unique Handcrafted Gifts will be available including hand stamped cards &  
gifts, floral crafts, wood carving and turning, stained glass, ceramics, knitted  
toys plus much more for those special seasonal gifts.  
Meet Santa ~ Demonstrations throughout both weekends

As well as the above Special Events our usual crafters will be demonstrating  
their crafts and the Tea Room will be offering hot and cold refreshments.  
Follow the Tangled Trail to the Railway Museum and step back in time where  
(weather permitting) you can enjoy a miniature train ride

*All this every weekend until 22nd November*

The **FIRST Sunday of October** will see Jewellery Making demonstrations  
The **FIRST Sunday of November** will see Floral Crafts demonstrated

**All this happens at George's Barn, Peene, Folkestone Kent. CT18 8AZ  
between 10am and 4pm**

For more details visit [www.elhamvalleylinetrust.org](http://www.elhamvalleylinetrust.org)  
[www.facebook.com/ElhamValleyLineTrust](https://www.facebook.com/ElhamValleyLineTrust). Official  
Registered Charity No. 295563

### THE 10th ANNUAL

## "ELHAM CHRISTMAS MARKET"

(in aid of the Pilgrims Hospices)

**ELHAM VILLAGE HALL on Thursday 29th October**

6.00 - 9.00pm (preview for disabled visitors from 5.30 - 6.00 pm)

It's a fabulous event with a lovely festive atmosphere full of  
fairy lights and fantastic stalls selling delightful Christmas  
gifts. Come along and start your Christmas shopping.  
There will be delicious mulled wine, other light  
refreshments and mince pies available to get you in the  
mood.....and a terrific raffle with great prizes. Please give  
generously!

**Entry: £1.00 - Children under 10 go free**

Please bring all of your friends and also it is advisable  
to bring cash as not all stall-holders will be able to take  
credit cards! We ask everyone to be considerate with  
buggies as it is very busy.

Enquiries to Carol Stevens on 01303 840430



## Etchinghill Baby & Toddler Group

We are a friendly toddler group, which caters for babies and children from 0 to school age. Crafts, messy play, trikes, toys and a singing session are included each week. In dry weather there is also outside access for the children to play.

We meet on Wednesdays between 10am -12noon at Etchinghill Village Hall. We charge £2 per family, 1st session is free. Tea/coffee and healthy snacks are provided. If you have any queries please contact

**Julia Tesoro 07809705309**

## Lyminge Baby and Toddler Group

We'd love you to bring your little ones along to our informal and friendly group for lots of fun. We'll be introducing singing and craft over the next few weeks so come along and join us. We meet every Tuesday morning at the Tayne Centre 10.30-12.00, term time only.

Cost: £1.50 per session, inc. refreshments for all.

Call: Any enquiries – Jenny 0756 4130569

Sarah 0798 4939220.

E-mail: [lymingetoddlergroup@yahoo.co.uk](mailto:lymingetoddlergroup@yahoo.co.uk)

## Rhodes Minnis Toddler Group

We are back on Thursday 10th September, 10am-12 noon

Hope to see our regular members as well as welcoming Mums, Dads, Grandparents and Child Carers.

We charge £1.50 per morning – to include mid-morning refreshments.

For more information phone **Elaine** on **01303 863096**



## Sign to Nursery Rhyme Classes

Etchinghill Village Hall on Tuesday mornings

Come and learn to sign with your baby. Signs are taught using nursery rhymes, action songs and musical instruments.

Spaces are limited so to book your place and for more information please call

**07800 737936** or go to

**[www.daisychaincourses.co.uk](http://www.daisychaincourses.co.uk)**



**Daisychain  
Courses**

## FOLKESTONE DISTRICT NATIONAL DANCE GROUP

Meets on Tuesdays 7.30 – 9.30 pm from late September to mid-June at

**Newington Village Hall, Newington, Folkestone**

to learn and enjoy folk dances from many different countries. No experience or partner necessary.

Tel: **01303 249199** or **01227 709557**



## Lyminge Pre-School



**'OUTSTANDING' – in every category  
Ofsted Feb 2011**

**We are now open between 8am and 6pm  
ALL YEAR ROUND**

We are a well established pre-school with committed, enthusiastic and highly qualified staff passionate about providing the highest standards of childcare.

To arrange to meet the team, please call:

**01303 863149** (day) or **07709420736** (eve) or email

[lymingepreschool@gmail.com](mailto:lymingepreschool@gmail.com) and visit our website

[www.lymingepreschool.org.uk](http://www.lymingepreschool.org.uk)

## SHEPWAY LIFELINE

*HELPING PEOPLE TO LIVE INDEPENDENTLY IN THEIR  
OWN HOME FOR LONGER*

The service they are renowned for is the red button pendant that is worn around the neck or wrist. In an emergency, when it is pressed, it calls for emergency assistance. The Lifeline really is a life saving service and is highly valued within the community. By enabling people to live in their own homes for as long as possible, it avoids the need for expensive residential and nursing home care.

Shepway Lifeline is Telecare Services Association accredited and has an innovative 24/7 monitoring centre, supplying all facets of Telecare alarms, including care and security solutions for vulnerable individuals, lone workers and local businesses.

To contact Shepway Lifeline: -

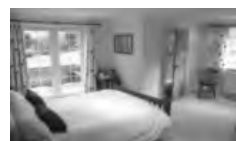
**Phone:** (01303) 242615 or 242971

**Address:** Shepway Lifeline, Civic Centre, Castle Hill  
Avenue, Folkestone, CT20 2QY

**Email:** [lifeline.proactive@shepway.gov.uk](mailto:lifeline.proactive@shepway.gov.uk)

**Website:** [www.shepway.gov.uk/lifeline](http://www.shepway.gov.uk/lifeline)

## Bridge Cottage Bed & Breakfast 4 Stars Silver Award



**Luxury accommodation in a tranquil setting  
Chris & Alison, Shuttlesfield Lane, Ottinge  
01303 862933**

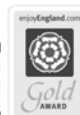
**[www.bridgecottagesimplybandb.co.uk](http://www.bridgecottagesimplybandb.co.uk)**

## Shuttlesfield Barn – 4 Star Gold – Self Catering

Rural location. Two bedrooms, ensuite bathroom and wetroom. Disabled facilities. Short and longer stays.



Families, dogs, horses welcome. Located on walking, cycling, riding routes. Heated outdoor pool in summer.



Info@shuttlesfieldbarn.co.uk Tel: 01303862729

[www.shuttlesfieldbarn.co.uk](http://www.shuttlesfieldbarn.co.uk) CT18 8LB

## bus times

for buses from **Lyminge Post Office to Folkestone Town Centre** via Etchinghill & Cheriton High Street

**MONDAYS TO SATURDAYS** except Bank Holidays

There are route 17 buses at 0705 (not Saturdays), 0749, 0909, 0939 (not Saturdays), 1004, 1034, 1104, 1204, 1304, 1404, 1504, 1614 (1619 on schooldays), 1629 (schooldays only), 1654 (schooldays only), 1719, 1749, 1834, 1929, 2113 and 2313.

There are also route 18 buses to Sandling Station & Hythe - for times see our website or call the number below.

**SUNDAYS & BANK HOLIDAYS**

There are route 17 buses at 0947, 1147, 1347, 1547, 1802 and 2002.

for buses from **Lyminge (opposite Aberdeen House) to Canterbury City Centre** via Elham, Barham & Bridge

**MONDAYS TO SATURDAYS** except Bank Holidays

There are route 17 buses at 0727 (schooldays only), 0732, 0752, 0903, 0938, 1028, 1128, 1228, 1328, 1443, 1613, 1703, 1803, 2001 and 2201.

There are also route 18 buses to Canterbury via Stelling Minnis and Bockingham - for times see our website or call the number below.

**SUNDAYS & BANK HOLIDAYS**

There are route 17 buses at 0827, 1027, 1227, 1427, 1642 and 1842.

These times will operate from 2<sup>nd</sup> November 2014.

timetable information 0871 200 22 33  
Calls cost 10p per minute plus network extras

www.stagecoachbus.com/eastkent



## TAYNE CENTRE HALL HIRE

*Previously known as the Lyminge Methodist Church Hall*

### Clayson Hall

1 October to 31 May (including heating) £9.00 per hour :  
£32.00 per 4 hour session : £64.00 full day

1 June to 30 September

£6.50 per hour : £23.00 per 4 hour session : £46.00 full day

**Rigden Room (Parlour)** with heating, if required\*

£6.50 per hour all year (\*electric - over heaters).

**Burren Room** with heating, if required\*

£5.00 per hour all year, (\*electric - over heaters)

### Overnight Stays

1 June to 30 September £40; 1 October to 31 May £55

For any enquiries please call **07971 722 401**



The Hall has 2 meeting rooms and a large hall; great for everything from dances, fun quiz nights and theatrical events.

Hire includes access to a fully equipped kitchen, serving hatches and bar (Licence available), all with easy car parking.

**NEW dedicated booking line on 0749 7625 741**

where Kate Kellett or Pippa Hamilton will be delighted to discuss your individual requirements.

Examples of prices for the main hall are: Friday or Saturday evening £65.00, weekday evenings £20.00 and all day on Saturday £135.00

lymingevillagehall.org.uk  
lymingevillagehall@outlook.com



Find us on Facebook  
Lyminge Village Hall



Follow us on Twitter  
@Lymingevhall

## ETCHINGHILL VILLAGE HALL HIRE FEES

The next time you are thinking of holding a function you should try Etchinghill Village Hall, which holds the highest Hallmark accreditation level, with its excellent facilities, including ample parking space.

The standard hire charge for the main hall and kitchen are:

Weekdays £10.00 per hour

Saturdays £12.00 per hour

Sundays £12.00 per hour

During the winter months (1 November to 31 March) a Winter Supplement of £1.00 per hour is added to the above rates.

Special rates apply for weddings and all day events with a range of discounts on the above rates applying to all lettings of more than three continuous hours and additional discounts are available to Etchinghill Residents and Regular Hirers.

The use of a separate Committee Room is also available.

For all bookings or enquiries please contact:

**Sylvia Williams on 01303 863547**

## Rhodes Minnis Village Hall

Charity No.800345

Rhodes Minnis Village Hall is located 2kms (1¼miles) from Lyminge and just off Longage Hill and Whitehorse Lane in Chapel Lane

The hall, which holds Hallmark accreditation, is ideal for children's parties, band practice, quizzes, meetings and fundraising events and has the capacity to take parties of up to 100. The rates include the use of the kitchen.

### Rates

Mon to Fri £15 per session £40 all day

Sat & Sun £20 per session

£30 for evening session and £60 all day

### Sessions

AM session 08.30 - 12.30

PM session 13.30 - 17.30

Evening session 18.00 - 23.45

There are special rates for regular users.

For all bookings and enquires please contact:

**Martin Fry 01303 863177 or 07849217793 or e-mail: book @rmvh.org.uk**

## Sibton Park Cricket Club

We extend an invitation to our local residents, please join us on match days and selected evenings and take advantage of the Club's outstanding venue, facilities and fully licensed bar.

Having a Celebration? Require a regular venue?

The club house and grounds are available

**For further information or to make a booking**

**please contact: Andy & Clare Allon**

**07817 751262 - aallon44@yahoo.co.uk**



This page is printed to give readers and organisers the opportunity of planning events without clashing with existing ones, which are already in the 'diary'. It is not intended as a means of advertising and we take no responsibility for errors or omissions. Acceptance is at the discretion of the editor. Please send your updates by email to [pb@pbarnes20.plus.com](mailto:pb@pbarnes20.plus.com) or via methods outlined on Page 2. Location and name codes follow:

**C&H:** Coach & Horses; **ECC:** Etchinghill Cricket Club; **EVH:** Etchinghill Village Hall; **ERA:** Etchinghill Residents' Association; **ES:** Elham Square; **JC:** Jubilee Centre; **JF:** Jubilee Field; **LB:** Laing Bennett; **LL:** Library; **LMC:** Lyminge Methodist Church; **LPC:** Lyminge Parish Church; **LSH:** Lyminge School Hall; **LVH:** Lyminge Village Hall; **LW:** Lord Whisky; **NP:** Nailbourne Parlour; **NVH:** Newington Village Hall; **PC:** Postling Church; **PH:** Lord Whisky, Park Hse. **PVH:** Postling Village Hall; **RVH:** Rhodes Minnis Village Hall; **RMC:** Rhodes Minnis Church; **SNL:** See News Letter for info; **TC:** Tayne Centre.

## One Off or Irregular Events

Date	Time	Event	Where	Tel. No.	Date	Time	Event	Where	Tel. No.
3 October	10.30am	Stream Clean	Well Field		31 October	7pm	Auction of Promises	EVH	863256
4 October	11am	Harvest Festival Service	LMC	863049	8 November	10.45am	Service of Remembrance	LPC	862073
5 October	7.30pm	Lyminge Association AGM	C&H		19 November	5pm	Christmas Lights On	LB	
10 October	AM	Boot Fair	ECC	07896717787	21 November	7pm	Wine Tasting	EVH	863819
10 October	3pm	Afternoon Tea Concert	TC		25 November	11am	Age UK Singing	JC	
20 October	7.30pm	RMVH AGM	RMVH		28 November	11am	St Nicholas Fayre	LPC	862073
23 October	7.30pm	Musical Bingo	LVH		4-5 December	7.30pm	A Christmas Present - Past and Future	LVH	LB
24 October	10am	Children in Need Coffee Morning	RMVH		5 December	7pm	Big Fat Christmas Quiz	EVH	863819
24 October	7pm	Lions Quiz Night	EVH	01303 893314	12 December		Haywardians Concert		
28 October	11am	AGE UK - Singing	JC		18 December	7.30pm	An Evening of Christmas Carols	Sibton Park	863992
31 October	6.30pm	Halloween Party and Fireworks	LVH		20 December	6pm	Carols and Candlelit Service	LPC	
					21 December	4.30pm	Christmas Present Delivery Service		

## Weekly Events

Day	Time	Event	Where	Tel. No.	Day	Time	Event	Where	Tel. No.
Mon	10am	Open House	EVH	863394	Wed	11.45am	Pilates	TC	07825109670
Mon	10am	Bridge Club	BC	863177	Wed	6pm	Karate for Juniors	EVH	07554004526
Mon	10.30am	Lyminge Larks (Singing)	TC	01233750223	Wed	7pm	French Conversation	KH	862972
Mon	11am	Cookery	JC	269602	Wed	7.30pm	Cantores Domincae Choir	LSH	01233840961
Mon	2pm	Computer Buddy (need to book)	LL	862180	Wed	8pm	Scottish Country Dancing	EVH	862761
Mon	2.30pm	Monday Fellowship	TC	862164	Thur	9.30am	Baby Rhyme Time	LL	862180
Mon	5.45pm	Lyminge Youth Drama Group	TC	862602	Thur	10am	RM Toddlers Group	RVH	863096
Mon	6.30pm	Judo Club	LVH	862946	Thur	10am	Art Group - Morning	TC	211364
Tues <sup>1</sup>	10am	Baby & Toddler Group	TC	863274	Thur	11am	Shopping trips to Supermarket	JC	269602
Tues	10am	Sign to Nursery Rhyme Classes	EVH	07800737936	Thur	2pm	Art Group - Afternoon	TC	862972
Tues	10.30am	Art Class	JC	269602	Thur	6pm	Ballroom and Salsa Dancing	EVH	07967979610
Tues	11.15am	Chairotics	JC	269602	Thur	6.45pm	Short Mat Bowls	LVH	863842
Tues	6pm	Football Training	JF	07967342226	Fri	10am	Talk Time	LL	862180
Tues	6.45pm	Short Mat Bowls	LVH	863842	Fri	11am	Seated Exercise	JC	269602
Wed	10.15am	Mature Movers (Exercise)	TC	862873	Fri	5pm	Hawkinge Flyers (Lyminge Branch)	Katrina	07881457994

## Monthly Events

When	Time	Event	Where	Tel. No.	When	Time	Event	Where	Tel. No.
3 <sup>rd</sup> Mon	7.30pm	Etchinghill Cinema	EVH	863333	3 <sup>rd</sup> Wed	7.30pm	RM Evening Circle	RVH	862913
Last Mon		Parish Council Meeting	SNL	239500	4 <sup>th</sup> Wed <sup>4</sup>	11am	Singing For Health	JC	862364
1 <sup>st</sup> Tues	10.30am	Reading Group	LL	862180	Last Wed	7.30pm	Quiz Night	C&H	862694
1 <sup>st</sup> Tues	11am	Reminiscence	JC	269602	4 <sup>th</sup> Fri	7.30pm	Beetle Drive	RVH	862616
1 <sup>st</sup> Tues <sup>2</sup>	7.30pm	LHS Talk/Event	TC	862972	Last Fri	1.30pm	Team Quiz	JC	269602
3 <sup>rd</sup> Tues	9.45am	Family History	LL	862180	1 <sup>st</sup> Sat	10am	Village Market	EVH	863819
3 <sup>rd</sup> Tues	2.30pm	Etchinghill W.I.	EVH	863503	2 <sup>nd</sup> Sat	10am	Postling Ch. Coffee Morning	PC	863536
3 <sup>rd</sup> Tues <sup>3</sup>	7.30pm	Gardening Society	TC	862264	3 <sup>rd</sup> Sat	8am	Saturday Market	TC	862164
1 <sup>st</sup> Wed	10.30am	Lyminge Friends	LMP	862598	Last Sat	11am	Poetry Group	LL	862180
2 <sup>nd</sup> Wed	10.30am	Mothers Union	NP	862221	3 <sup>rd</sup> Sun	10am	Parish Walk	Richard	862015

<sup>1</sup> In term time only <sup>2</sup> Except Jan, Feb, July and August <sup>3</sup> Except Jan, Feb, Aug <sup>4</sup> Except Aug and Dec



# Out and About

*Do you have any photos of local events or local groups in action, please call 01303 862699. Give your group a FREE plug!*



➤ **The Garage Sale Safari** held on Sunday 13th September got off to a good start with quite reasonable weather and sales were good until the rain came along at about 11.30. Thank you to everyone who joined in both selling and buying. After expenses any profit from the event goes into the Lyminge Association funds to help with village projects and events.



➤ One group enjoying the **Etchinghill W.I.** coffee morning held at the home of Rosemary and John Pidcock on 18th August.

➤ **The Lyminge Monday Fellowship Group** held a Strawberry Tea on 25th August at the Tayne Centre and raised £245 for the charity "Hope Romania".

## Mystery Photo



Last month's picture was the post box at Yew Tree Cross, with a very wide posting slot. There are several of these in Lyminge, but which one is this?



➤ Helpers at **The Macmillan Coffee Morning** on 28th August in Lyminge Library with a wonderful array of goodies! A grand total of over £430 was made for the charity

### From Sarah Hartley

" Sarah Hartley is sad to announce the death of her mother Diane after a long illness, bravely borne. She was cared for with devotion by my father Ron with assistance from carers, district nurses and the team at New Lyminge Surgery. We would like to thank everyone for their support"



## DILTON MINI SKIP HIRE

Ballast, Hardcore, Sand  
and Topsoil Supplied  
REGISTERED WASTE CARRIER  
**01303 812448 or 07799 433754**

*'Helping you enjoy your garden'*

## CRT Gardening

Knowledge of general gardening, including lawn care, hedge trimming and cutting, vegetable garden work, fencing installations and repairs, small and medium size tree work and ongoing maintenance of all of them.

Heavy-duty work is also undertaken.  
Free estimates; fully insured. Karl Dodd 07967442518  
Email: karl.dodd@live.co.uk www.crtgardening.com

## AIR LINK CARS

(You pack up, we pick up)

Airport, Seaport & Long Distance Travel Specialists.  
The Family Run Business where service really counts  
Estate cars and People Carriers



Fixed price 24hrs a day. No extras.  
Written Confirmation of booking.  
For the Easy Airport Link, Think AIR LINK!

**01303 862704 - 07753 760897**

## WILL WOODBRIDGE

Carpenter/small works builder  
With years of experience

**01303 863062**



## Laing Bennett

PHILIP A CHAPMAN

With our excellent local knowledge, service  
and two local offices we will get you moving

The Estate Office 8 Station Road Lyminge Kent CT18 8HP  
T 01303 863393 E lyminge@laingbennett.co.uk  
134 High Street Hythe Kent CT21 5LB  
T 01303 264846 E hythe@laingbennett.co.uk

**www.laingbennett.co.uk**

## Picture Framing

All types of framing undertaken, including  
tapestries, cross stitch, medals & badges etc.

Can collect and deliver.

**01303 863449**



## Claire's Country Kitchen

Join us and enjoy some of our delicious home-baked items.  
Breakfasts, Light Lunches, and Snacks with a selection of  
Teas or Coffees.

Open Tuesday – Saturday, 7.30am - 4.00pm  
Canterbury Road, Lyminge, Kent CT18 8HU

**01303 864222**

## SCRUBBERS - Est. 1988

THE HOME AND COMMERCIAL CLEANERS

One off, regular or moving day 'Blitz'

Oven cleaning – Ironing

Carpet cleaning and more...

For a friendly and reliable service

Free Estimates

**Tel: 01303487019 or 07834128671**

## Dennis Huntley

Installer of wood and multi-fuel stoves & fireplaces  
Heating engineer, solid fuel servicing and chimney sweep

**01303 862343**

**07850 784365**



## R. B. BUILDING SERVICES

General Maintenance, Painting, Carpentry,  
Plumbing, Upvc Fascias and Guttering.

Fully Insured

For a free quote please ring Roy Bowling on  
**Home Tel: 01303 863267 – Mobile 07947 132319**



## CEDAR HOME MAINTENANCE

Building Alterations  
Kitchen Installations  
Painting & Decorating  
Plumbing  
Plastering

Damp Proofing  
Drainage  
Carpentry  
Re-pointing  
Patios

Windows & Doors  
Gutters & Down Pipes  
Fascia's & Soffits  
Glazing  
Electrical

Roofing  
Fencing & Gates  
Property Clearance  
All Work carried out by Qualified Tradesmen (Fully insured – all areas of Kent covered)

Call Dominic: 07968197613 Office: 01303 230787

cedarhm@hotmail.co.uk and **www.cedarhomemaintenance.co.uk**

Environment Agency Registered (Reg/472477) Established Since 1986

## HOLDEN PLASTERING

All aspects of Plastering  
Smooth-over Artex - a speciality.  
Coving, Tiling and Plumbing

Phone JAMES for free estimate or advice on:  
**01303 770449 07773 262970**

**Coul-Pups Pet Care Service** Fully insured, qualified and experienced member of National Association of Registered Pet Sitters (NARPS). Dog walking, 1 to 1 dog training or in class environment in association with Elham Dog Training Club. Dog grooming, cat and small pet care and house/pet sitting.

Visit: <http://coul-pups.vpweb.co.uk/> Email: [coulpups@gmail.com](mailto:coulpups@gmail.com) Phone: 01303 255176 or 07542 727326

**Elham Dog Training Club** Lyn Fagg 01303 862820



### D.M.B. Plastering

All aspects undertaken  
Interior. Exterior. Plastering. Rendering.  
Coving. Ceilings Wall. Floors  
Finest quality assured. CSCS Certified.  
26 years experience.  
Free estimates. Reliable service. Fully insured.  
Call David on 07818 607209

### P Davis + Co

General Builders and Roofing Specialist  
All work undertaken  
Call for free estimate

**Tel: 01303 863049 or 0784 6769643**

### Personal Computing

For straightforward I.T. advice, solutions  
and training

Contact: **Steve Ashman**  
**862869**  
**sra@ashman-consulting.co.uk**



### CARE FOR YOUR FEET

**IAN COX MSSCh MBChA CHIROPODIST**  
**at AGE UK HYTHE AND LYMINGE**

Treatments include toenail cutting, corns, hard skin, fungus and more  
Prices from £12.00

For further information and to book an appointment  
'phone 01303 269602



### Wilco Plumbing & Heating

Central Heating Installations & Repairs  
Gas & Oil Boiler repairs & replacements  
5 Year Guarantee on Worcester Bosch Boilers.  
Local Experienced Engineer, Emergency plumbing 24/7 call out  
Registered with the Institute of Plumbing  
Gas Safe Registered-OFTEC Registered  
**01303 862173 07860 452640**  
**paul@wilcoplumbing.co.uk www.wilcoplumbing.co.uk**

### TOBY'S TREE SURGERY

Thinning - Reducing - Maintenance - Felling  
ALL TREE WORK, BOTH PRIVATE AND COMMERCIAL,  
UNDERTAKEN BY OUR NPTC TRAINED OPERATIVES  
Professional Friendly Service

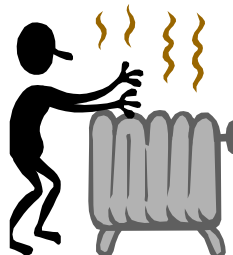
**FREE ESTIMATES - FULLY INSURED**

**Contact Toby Griggs:**

**07854 098 395 or (01303) 863642**

### D. SCRIVENS

PLUMBING & HEATING  
Oil Fired Boiler Installation,  
Commissioning, Service and Maintenance.  
Unvented Hot Water Systems - Solar Water Heating  
Central Heating - Water Softeners - Bathrooms - Showers - En suites  
Approved 'Aqualisa' Installer  
WATER INDUSTRY 'APPROVED PLUMBER'  
FULLY INSURED  
**07810 897076 scrivensplumbing@aol.com**



### K & M LEWSEY LTD

plumbing & heating engineers  
established 1969

Registered plumber

Gas ACOP approved engineers

**01303 264535**

manned office

daytime Monday to Friday

Total garden care for all your needs

### TIM MILLETT

Grass Maintenance, General Gardening, Small & Medium  
Size Tree Work, Stump Grinding and Wood chipping  
Fencing Repairs & New Installations  
Turfing, Hard & Soft Landscaping  
Free Estimates - Fully Insured

**01303 863676 07752 880583**

**Email: info@tmhorticulture.co.uk**



Respiratory

Rehab

Bringing health home

Providing private community respiratory  
physiotherapy, general physiotherapy and  
rehabilitation to East Kent

**T: 07904482097**

**E: kris@respiratoryrehab.co.uk**

**W: www.respiratoryrehab.co.uk**

**Kris Bahadur. Chartered Physiotherapist.**  
MSc Physiotherapy, BSc (Hons), MCSP, SRP

### N.P.C.

Domestic Appliance Services

Service and repair of washing machines, tumble driers,  
dishwashers, cleaners and small electrical work. For a  
prompt and friendly service

Call Neil Collard 01303 892234 or 07798716044  
or **www.npcdomesticapplianceservices.co.uk**

### Auto Economy Centre

Fully equipped Mechanical Repair & Service Centre  
with the latest diagnostic equipment  
MOTs **£39.95**

**01303 863656**

**Orchard Garage, Canterbury Rd, Etchinghill**  
**www.autoeconomycentre.com**

### Old English Pine

Antique, repro pine, oak and French-style painted furniture with beautiful and reasonable priced accessories to make  
your house a home. Bespoke pine units made to order. Huge shop - over 3 floors. Open 7 days a week.

**Tel: 01303 248560 www.oldenglishpineinkent.co.uk 100/102 and 90 Sandgate High Street, Sandgate**





**Lyminge  
Country  
Bakery**

**01303 720126**  
www.lymingecountrybakery.co.uk  
baker@lymingecountrybakery.co.uk

A Selection Of Our Produce

- Traditional Loaves • Low GI Bread • Sweet Products
- Mini Loaves • Artisan Bread • Baguettes
- Specialty Loaves • Savoury Products • Bakery Specials

## ✂ **SNIPPERS & CLIPPERS** ✂ UNISEX HAIR SALON

**LYMINGE SALON**

Facial Waxing : Gents Welcome : Shellac Nails  
Free WiFi : Appointments not always needed

01303 647222 : info@snippersandclippers.co.uk  
Station Road, Lyminge, CT18 8HP



## Local Bookkeeper

Sole Trader & Small Business Accounts  
VAT, Self Assessment, Payroll, CIS  
& General Administration Services



Call or e-mail:

Tel: 01303 864229 Mob: 07702 321686

e-mail: tash@bestbookwork.tax

www.bestbookwork.co.uk



## T. Metcalfe Fencing Contractors

Approved Expert Installer for Jacksons Fencing  
Established over 30 years  
Fully insured - Highly experienced teams



Panel fencing, gates, decking, pergolas, post & rail,  
stock fencing, security, landscaping & tree surgery.

**01303 840201 07790 290 155**

metcalfefencing@btinternet.com

Proprietor - Derek Burr,  
Ash Ridge House, Elham



## KENT & SUSSEX HOLIDAY COTTAGES

With over 250 properties in this region and an expert local team, call now to book your  
2015 break or to talk to one of the team about letting your property for holiday rentals.

— **01304 619 444** —

www.kentandsussexcottages.co.uk info@kentandsussexcottages.co.uk

12 King Street, Sandwich, Kent CT13 9BT

## DO YOU NEED HELP IN YOUR GARDEN ?

Sean Godden can do all those jobs that take up your spare time.

Weeding -turf laying - lawn cutting/edging

Hedge/tree maintenance – waste tip runs

Fence & decking painting/treating

Brick, pathway cleaning.

TEL. 07538988914 – Email 'sgodden@hotmail.co.uk'

## Essential Beauty

*reflexology : aromatherapy : collagen mask facials  
non-surgical perceptor : facials : cuccio gel varnish  
manicures & pedicures : waxing & eyelash/brow tinting*

Therapist with 20 years experience

Call Janene Moat 01303 840052

The Limes, High St, Elham.

Free eyebrow tidy for new clients.

## Quality Cat and Dog Food from **OSCAR**

Free delivery to your door. Honest label, no additives  
or animal derivatives. No minimum order or contract.  
Expert advice available.

Call **Laurence** on **01303 777888** to  
discuss your supplies and for a free  
sample of cat or dog food.



## SEATHWAITE BOARDING CATTERY LTD.

Supporting Rhodes Minnis Cat Sanctuary

GREEN LANE, RHODES MINNIS, CT4 6XUTEL: 01303 862243 (Registered charity 262245)

**ONLY CATS BOARDED, IN QUIET COUNTRY LOCATION**

Individually heated chalets. Single cat £7 per day, a reduction for 2  
or more cats. All cats boarded with us must have current vaccina-  
tions against cat flu & feline enteritis. All profits from the boarding  
cattery go to support homeless cats in the Sanctuary.

**RHODES MINNIS CAT SANCTUARY**

has a wide variety of cats available to caring homes.

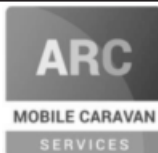
## Alan Croucher Caravan Engineer

Have your Caravan, Motorhome, Horsebox or  
Trailer serviced without the fuss of taking it  
to a workshop.

**www.arcmobilecaravanservices.com**

**Mobile: 07921 480919 Home: 01303 863194**

\*Non mechanical only on motorhomes and horseboxes



## East Kent Foot Care

Mobile Foot Health Practitioner

**Jo Shapter** BSc (Hons), MCFHP, MAFHP

Treating and managing common foot problems,  
corns, callus, verrucae, thickened nails,  
toe nail management, fungal problems,  
diabetic foot assessments etc.

**Call: 07745 532075**

Member of the British Association of Foot Health Professionals



## VICTORIA'S HAIR AND BEAUTY SALON 2 Cullings Hill, Elham, CT4 6TE

MANICURES / PEDICURES / CND SHELLAC / ST TROPEZ SPRAY TAN / FACIALS / MASSAGE / TINTING /  
HOT STONES / HAIR / PAMPER PACKAGES / WEDDING MAKE UP / GIFT VOUCHERS

01303 840 931 / www.victoriashairandbeauty.com



## Ralph Allard Chimney Sweep



All chimneys, boilers and stoves swept.  
Brush and Vacuum. Certificates issued.  
HETAS and NACS registered, fully insured.

Member of National Association of Chimney Sweeps

**01303 844465 or 07813716654**

**THE CLINIC**  
Garden Suite  
Pendragon House  
4 Station Road  
Lyminge  
Kent CT18 8HP  
**01303 863359**



info@theclinic-lyminge.co.uk  
www.theclinic-lyminge.co.uk

## REGISTERED OSTEOPATHS & MEDICAL ACUPUNCTURIST

**Adam Price B.Sc Hons (Ost) Katie Price B.Sc Hons (Ost)**

The Clinic 01303 863359 or mob: 07980 897382

- Treatment of lower back pain, both acute and chronic
- Treatment of tension/cervical type headaches both acute & chronic
- Treatment of various stiff & painful arthritic conditions
- Treatment of sports injuries, both soft tissue & skeletal
- Deep tissue back, neck & shoulder massage for symptomatic relief

The cost of your treatment may be recoverable from your insurers. Please check



## Sunhouse Electrical

Your local reliable Electrician

Part P Registered & Elecsa Approved

Fully Insured & On Competent Persons Register

For a free quotation & advice call James on

**01303 766333**

**www.sunhouse-electrical.com**

## GOSBEE CONSTRUCTION

Over 30 years experience. Jacksons Expert Installer  
Reliable. Friendly. Professional

Property Maintenance  
Hedge & Tree Cutting  
Tarmacadam Works  
Grass Cutting

Building Work  
Garden Design  
Landscaping  
Fencing & Gates

Ponds  
Patios  
Driveways

For a free, no obligation quote: **07974 835511 or 01303 863337**  
Visit our website: [gosbeeconstruction.co.uk](http://gosbeeconstruction.co.uk)  
E-mail us: [info@gosbeeconstruction.co.uk](mailto:info@gosbeeconstruction.co.uk)

## S R Accounting and Business Solutions LLP

*"Working hand in hand with your business"*

**Denise Roberts, ACIS, ACMA & David Sayle**

Qualified accountants with a combined experience of over 50 years. We offer business start-up advice, business planning, monthly & annual accounts, VAT & tax submissions, full payroll service, company secretarial service.

[droberts@sr-accounts.co.uk](mailto:droberts@sr-accounts.co.uk)

**01303 862559**

**0751 1097707 www.sr-accounts.co.uk**



**MANOR**  
VETERINARY CLINIC

We care for them all, great and small

Lyminge Clinic: Methodist Church Hall  
Mon, Wed & Fri pm

**01303 273203**

**www.manorveterinaryclinic.co.uk**

## STERRY'S

*Independent  
Funeral Director*

01303 272525  
93 Cheriton High Street  
(opp Co-op)

01303 264400  
41 High Street, Hythe  
(opp Lloyds Bank)

Always here for you; 24 hour service. Home visits on request.  
Choice of pre-paid funeral plans

## Red Dragon I.T. Ltd.



- Windows, Mac & Linux Systems
- PC Health Checks
- Wired & Wireless Networks
- Website Design
- Graphic Design

T: 01303 723456 | E: [info@rdit.co.uk](mailto:info@rdit.co.uk) | [www.rdit.co.uk](http://www.rdit.co.uk)  
2 Station Road, Lyminge, Folkestone, Kent, CT18 8HP

## TIME FOR HEALTH! WEIGHT LOSS CHIROPRACTIC CARE

(The easy way!)

(Humans, horses, dogs & cats)

Back pain, neck pain,  
arthritis, stiffness & much more  
[www.backtostraight.com](http://www.backtostraight.com)



**Will Wright: 07905 031850/01303 863460**

## LYMINGE FOOD AND WINE 01303 862225



We are here to serve you  
Mon. – Sun. 7:00am to 9:00pm  
including Bank Holidays  
National Lottery Here



## South East Aerial & Satellite Solutions

**Digital – Freeview – Satellite – Aerials**

Supply and fit of quality digital installations, FREEVIEW, SKY, aerials, poor reception and problem solving, upgrades and repairs by fully accredited engineers

Free quotations and advice, fixed prices, fully insured

**Freeview**

**NO CALL-OUT CHARGE**

**freesat**

**07968 659404 - 07825168010 - 01303273640**

## AMV

FENCING, GARDEN AND LAND MAINTENANCE

**No Job Too Small – Free Quotations - Reliably and Professional Service**

Fencing & Gates : Groundwork & Driveway : Patios & Block Paving : Tree Surgery & Hedges : Lawn Mowing & Garden Maintenance : Pest Control

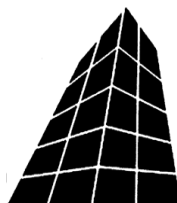
**Contact: Alfie Vassar 07860216442 or [amvmaintenance@hotmail.com](mailto:amvmaintenance@hotmail.com)**

## COUNTRY FARE

### CATERING SERVICES

Country Weddings, Christenings and All Family Gatherings, Corporate Lunches, Seasonal Parties & Celebration Cakes

Sally Burr 01303 863642 07814 610995  
sallycountryfare@gmail.com



## Filehurst Associates

Archive, Warehousing, Logistics,  
Business & Household Storage.  
Domestic & Commercial removals  
and storage.

01303 239990 [www.filehurst.co.uk](http://www.filehurst.co.uk)

## FRESHLOOK GARDENS

Regular lawn mowing service. Garden design. Hard and soft landscaping. General garden work, fencing and decking. Turfing hedge cutting, small and medium tree work. Water features, ponds and patios.

For free quotation ring Geoffrey Hogben

01303 844 680 / 07866 091633

sales@freshlookgardens.info

[www.freshlookgardens.info](http://www.freshlookgardens.info)

Established since 1990. Fully insured.

## Browns

Sales & lettings  
7 days a week



Over 40 years of Kent  
village and country property

Elham 01303 840422 | Hawkinge 01303 892000  
[www.brownscountryproperty.co.uk](http://www.brownscountryproperty.co.uk)

## LYMINGE NEWSAGENTS

11-13 STATION ROAD, LYMINGE CT18 8HS  
01303862566

POST OFFICE, 'OFF LICENCE'  
CONVENIENCE STORE

Dry Cleaning and Laundry, can deliver Papers  
OPENING HOURS

7AM TO 10PM EVERY DAY

Local Tradesman

## J Tappenden

Established 36 years



Painter/Decorator/Builder

01303 862467

077755 78008

## THE DRIVING INSTRUCTOR

### ROGER DOWLE

ADI QUALIFIED PATIENT & PROFESSIONAL TUITION  
FOR MORE INFORMATION OR TO BOOK A LESSON PLEASE  
CALL ROGER

07870939936

Introductory offer, beginners only, first five HOURS £80

## Jackson Plumbing Property Maintenance

Complete bathrooms and tiling  
No job too small. Special rates for OAP's.

Telephone: home/evening 01303 270691  
or daytime 07773 089398 or 07864 929826

## M. J. Athow

BUILDER & DECORATOR, EST. 1965  
GENERAL MAINTENANCE

Qualified and Insured. Free estimates  
Telephone: 862616 Mobile: 07976 306665  
Email: m.j.athow@live.co.uk

## SIX MILE GARAGE LTD

Stone Street, Stelling Minnis, Canterbury, Kent CT4 6DN

- Car and light commercial servicing
- Class 4 and 7 mots and repairs
- Car and light commercial accident repair centre (insurance approved)
- Diagnostics bay with latest equipment
- Tyre bay with four wheel alignment and balancing
- Air conditioning servicing

Tel. 01227 709214 or 01227 709491, Fax 01227 709331

E-mail: [office@sixmilegarage.co.uk](mailto:office@sixmilegarage.co.uk)

## Trevor Law Electrical Installations



Serving Elham Valley for 30 years  
Part P Registered

01303 862348  
07850 970087

## J. V. Services

Servicing and Repairs:

- Garden Machinery
- Ride on Mowers
- Trailers & Horseboxes
- Quad Bikes
- Classic Cars

(Free collection and delivery)

## Mobile Mechanic

Serve/Repair/Full Restoration:

- Compact Tractors
- Vintage Tractors
- Classic Tractors

Mobile: 078 0300 3047  
[john@jvserviceskent.com](mailto:john@jvserviceskent.com)

## THE COUNTRY FENCING COMPANY

All fencing work undertaken. We supply and fit many types of timber fencing for domestic and commercial premises. We can provide panels, gates, trellis and concrete materials, and also make products to your specific requirements. Please visit our website for further details, and call or text now for a free no obligation estimate.

Website :- [www.thecountryfencingcompany.co.uk](http://www.thecountryfencingcompany.co.uk) Tel :- 07519 590941

New local fencing company  
launching 1st October 2015.