

THE LYMINGE NEWSLETTER

For the communities of LYMINGE, ETCHINGHILL, RHODES MINNIS and POSTLING

<http://www.lyminge.org.uk/>

September 2015

Produced by
THE LYMINGE ASSOCIATION

News from the Lyminge Association

Garage Sale Safari

Sunday 13th September

Registration forms available from Claire's Country Kitchen. Still only £5 per garage !

Lyminge Association AGM ~

Monday, 5th October - the venue is yet to be decided, so keep an eye on The Association noticeboard in the car park. Do come along and see what your Association has been doing for the past year and maybe add to our plans for next year !

Lyminge 2016 Calendar ~

Have you taken a photo or two that you think might help make up the 2016 Calendar? Call 862699 for an Entry Form or for more information. It could be wildlife, village gardens, rural life, as long as it's connected to the local area ! Enter as many as you like !

Nailbourne Stream Clean

Saturday, 3rd October

see page for details or call 862699 . . .

INTERNET SAFETY AWARENESS

Every technological advance brings with it a certain amount of fear and anxiety. This is clearly the case when it comes to our increased interaction in an on-line world. It also seems true that younger generations struggle to understand the anxiety expressed by their parents and leaders. **How then do we navigate the minefield of needing to safeguard our young people while still making good use of the opportunities our digital age offers.**

Through this meeting the advantages and risks involved in using the Internet and social media will be considered, and the ways that we can empower and educate those in our care, and ourselves, so that we can all use the Internet in a safe and smart way.

Date: Saturday 19th September

Time: 9.30am coffee, 10-12noon presentation

Venue: Lyminge Parish Church - St Mary and St Ethelburga, Church Road, Lyminge

Speaker: Murray Wilkinson - appointed by Canterbury Diocese to advise people how to use the Internet and social media safely

Cost: FREE to anybody wishing to attend

Booking: Book via website: www.canterburydiocese.org/events/e-safety-training-south
.... or book by phoning: Holly Adams on 01227 459401
.... or turn up on the day

Sponsored by Lyminge Parish Church and Lyminge Association



LYMINGE PARISH CHURCH SERVICES & ACTIVITIES

Church Website: www.lymingechurch.co.uk

E-mail: office@lymingechurch.co.uk

- Wed 2nd Sept NO Holy Communion
NO Open House Bible Study
- Sun 6th Sept **8.00am Holy Communion**
11.00am WOW (Ways of Worship)
- Wed 9th Sept 7.00pm Holy Communion (*short said*)
7.30pm Open House Bible Study & Discussion
Coffee served from 7.20pm
- Sun 13th Sept **8.00am Holy Communion**
11.00am Sung Eucharist
- Wed 16th Sept NO Holy Communion (*short said*)
7.30pm Open House Bible Study & Discussion
Coffee served from 7.20pm
- Sat 19th Sept 9.30am E-Safety Training
See full advert in the newsletter for details
- Sun 20th Sept **11.00am Family Service with Children's Corner**
6.00pm Evensong
- Wed 24th Sept NO Holy Communion (*short said*)
7.30pm Open House Bible Study & Discussion
Coffee served from 7.20pm
- Sun 27th Sept **8.00am Holy Communion**
11.00am Sung Eucharist
3.30pm to 5.30pm Messy Church
- Wed 30th Sept 7.00pm Holy Communion (*short said*)
7.30pm Open House Bible Study & Discussion
Coffee served from 7.20pm

ACTIVITIES THIS MONTH

Mothers Union

Wednesday 9th September 10.30am
In the lounge at Nailbourne Court
Please contact Sue on 862221 for details

Coffee Morning in Wentworth Close Lounge

Wednesday 16th September from 10.00am to 11.30am
In the lounge at Wentworth Close (entrance via the car park)
Please contact Lynne on 863010 or Loraine on 863216

Prayer Shawl Knitting Group

Wednesday 16th September from 2.30pm at 26 Nailbourne Court
This group meets to pray and knit shawls for those suffering from ill health or bereavement
New members are always welcome
Please contact Madelaine 863582

Ethelburga Luncheon Club

Thursday 17th September meeting at 12.00 noon
at the Coach and Horses
Please contact Lynne 863010 if you are interested and/or need transport

PADDLESWORTH PARISH CHURCH SERVICES

- Sun 6th Sept **NO SERVICE**
- Sun 13th Sept **9.30am Harvest Festival**
12.30pm Bring & Share Ploughman's Lunch
- Sun 20th Sept **NO SERVICE**
- Sun 27th Sept **6.00pm Evensong**

*"Love begins at home, and it is not how much we do...
but how much love we put in that action."*

— Mother Teresa

LYMINGE METHODIST CHURCH

Visitors are very welcome to join us at our weekly service at **11am** and invited to share fellowship afterwards with a cup of coffee/tea.

- 6 September** - Mrs Georgia Reed
13 September - **9.30am** Valley Church at Elham
20 September - Rev Sam Funnell (inc Holy Communion)
27 September - Mr Tim James
4 October - United Harvest Festival

RHODES MINNIS CHURCH

This small Chapel in beautiful countryside holds a weekly Sunday Service normally at 9.30am followed by coffee and biscuits. A warm welcome is extended to any visitors.

- 6 Sept** - Mrs Georgia Reed
13 Sept - No service at Rhodes Minnis
20 Sept - Rev Robin Blount (inc Holy Communion)
27 Sept - Mr Tim James
4 Oct - Harvest Lunch at 1pm followed by a Harvest Service led by Rev.Dr.Philip Luscombe
Please Note: This will all take place in the village hall.
Lunch must be pre-booked with Daphne Andrews on 862865

POSTLING CHURCH SERVICES

- 6 Sept** - 6pm Evensong
13 Sept - 9.30am Family Service
20 Sept - 8am Holy Communion
27 Sept - 9.30am Family Communion



- 12th Sept** Friends of Kent Churches Cycle Ride
5th Oct Combined Harvest Festival in the Methodist Church. Collection to be sent to the Nepal Disaster Fund and gifts to be sent to the Rainbow Centre and Age UK.
10th Oct Afternoon Tea Concert, Tayne Centre at 3pm
17th Oct Saturday Market in the Tayne Centre

Lyminge Newsletter

Terms & Conditions. Copy deadline is 18th September

Please email your copy in to the editor (pb@pbarnes20.plus.com). Your payment must be received before your article or advert can appear in the Newsletter. Please leave your payment along with your name, organisation, telephone number and copy of your ad in a sealed envelope at the Lyminge Post Office or at the Lyminge Library. Business adverts cost £9.50 per month or £95.00 per year. Personal and charity adverts and articles from £3 per month, or £30.00 per year. The annual rate offers 12 entries for the price of 10. Please make cheques payable to '**The Lyminge Association**'. If you do not have email, a typed paper-copy can be left with the payment.

Lyminge Association accepts no liability for the accuracy of the advertisements or subsequent actions arising in conjunction with advertisers in the newsletter.

Further details from Peter (editor) on 01303 863737

BUZZLINES FOR YOUR LOCAL DEPARTURES

A sample of our upcoming programme. This isn't the complete list – lots more on-line. Ask for child prices and large group discounts. Pick-ups in Elham and Lyminge. Home pick-ups for any tour of over 2 nights.

Day Trips

The Battle of Britain Anniversary Air Show	Sunday 20th Sept	£51
Eastbourne	Monday 21st Sept	£28
Portsmouth	Tues 22nd Sept	£29
Buckingham Palace & Garden Highlights	Thur 24th Sept	£55
Long, On the Somme, with Chateau Tour	Thur 24th Sept	£45
Montreuil or Cite Europe	Mon 28th Sept	£29
Steam, Cream & Cruise	Tue 29th Sept	£50
Reins & Trains in the Kentish Weald! With Lunch	Wed 30th Sept	£49.50
Memorials of the Somme guided tour	Wed 30th Sept	£37.50
Kew Gardens & Kew Palace	Thur 1st Oct	£42
The Cake & Bake Show at Excel London	Sat 3rd Oct	£40
Lakeside or Romford Market	Sat 3rd Oct	£25
Bruges	Sun 4th Oct	£39
Colchester Zoo	Sun 4th Oct	£40

Tours

Autumn Hues in the Black Forest (9 days)	Sat 3rd October	£575
Romantic Rhine River Lights, Germany (5 Days)	Fri 9th October	From £499
Bournemouth, Dorset Delights & The New Forest (5 Days)	Sun 11th October	From £369
Mystery Tour (3 Days)	Fri 16th October	From £190
Warners Cricket St Thomas	Mon 19th October	From £429
Half-Board winter escapes 4* Hotel Costa Brava	2-10 weeks from 2nd Jan	eg £750 for a month

BUZZLINES FOR YOUR LOCAL DEPARTURES

Etchinghill Update September 2015

ETCHINGHILL VILLAGE HALL

OPEN HOUSE Every Monday from 10.00 – 12.00am. (Except Bank Holidays) All welcome for a chat, company, activities, and refreshments. Monday 7th September, Anne Finney will give a talk on the "Life and Music of Glenn Miller". There will be a retiring collection in aid of charity. Monday 28th September, Derek Smith will give a talk on Queen Ethelberga, who is connected with our area.

FARMERS MARKET Always held on the first Saturday of the month. There are plenty of stalls and refreshments available. Last months' raffle was won by Mrs Roberts from Folkestone.

ETCHINGHILL COMMUNITY PETANQUE COMPETITION All welcome – to take part please contact j.baker492@btinternet.com for further detail.

WORKING PARTY What are you doing on the weekend 18th 19th and 20th September? Can you help paint a store (or two), grout a patio (or two), dig a trench for a drain, replace some block foundations, clear out a store or just clean and wash down the car park? If you can please let Rodney know on 862028.

ETCHINGHILL RESIDENTS' ASSOCIATION

We are holding an **Open Mic Event** in aid of charity on 10th October at Etchinghill Village Hall. Doors open 7pm. £5 per adult. Bring your own refreshments and nibbles. All ages welcome so come along and enjoy a fun evening whether you wish to entertain or simply spectate. To book a table or an entertainers' time slot contact Dave or Geraldine on 01303 863164 after 29th August.

Etchinghill Cinema Club is showing the film "The Second Best Marigold Hotel" (PG) on Monday, 21st September, at the Etchinghill Village Hall, doors open at 7.00 for 7.30 pm start. A comedy/drama sequel, starring Maggie Smith, Judi Dench, Richard Gere and Celia Imrie. Everyone is welcome at this friendly, relaxed community event, so why not come along. Membership is free (you may join on the night) and the entrance fee of £5.00 includes admission, refreshments and a lucky draw ticket. Film shows take place every third Monday of the month. For further information, please contact Lorraine on 01303 863333."

The Good Neighbour Scheme. Can we help you? Do you feel lonely, isolated, or do you just need someone to talk to, just give us a call? This service is free and confidential to all Etchinghill residents'. Volunteers are waiting for your call on 07934 160454. If there is no reply do leave a message and we will get back to you.

LITTER

We are very lucky to live in such a beautiful part of the county and we try and keep it as such for the future residents of Etchinghill. Even so, we must say "thank you", to the local residents, who leave their rubbish for others to clear up on the Amenity Land. Footballers and picnickers must pass the rubbish bins on their way out of the area, so why leave it for others to dispose of their "left-overs". Please take it home or bin it!

If you would like to include an item in the *Etchinghill Update*, please contact **Barbara** on 01303 862873

News from Age UK Lyminge...

The Centre is looking even more welcoming than usual now we have had new carpets fitted (thanks to Lyminge Parish Council). The sparkling interior is matched with a sparkling staff team and, from September, an equally sparkling new programme of activities. Sadly, we said goodbye to Sue, but we are delighted that Rachel will be taking her role and she will be supported by our regular staff alongside some new faces. We know the team will continue to provide the great service you are used to. From September, there will be some new activities, including a Book Club, Relaxation and a Health Walk (exploring pastures new). More details next month.

Would you like to join the team? We need:

- Help in the café and shop on Monday, Wednesday and Friday afternoons from 1.30pm to 3.45pm
- Help in the kitchen, café and shop on Thursday mornings from 9am to 12pm
- Drivers to bring our clients to us on Wednesdays and Thursdays from 8.45 to 10.30am, then to take people home again between 2.30 and 4pm. (You are more than welcome to stay at the Centre throughout the day.) You will be driving a small, 8-seater mini-bus which does not require any special license. We'll give you training and plenty of support.

If you can volunteer for any of these sessions we will be most grateful and we're sure you'll enjoy yourself.

JOIN US for a trip to **Buckingham Palace Staterooms** (and optional tour of private gardens) on Thursday 17th September leaving Everist Court at 9am. Please book at Everist Court - £25 for regular AgeUK clients / £35 for non-clients.

REMINDER There are still some places on our autumn coach holiday to **Blackpool** (26th – 30th October). Call 01303 269602 and ask for Matthew for full details.

For more information about any of our events or services call **01303 269602** or email co@ageukhl.org.uk or come and say hello in person – we are at **Everist Court, Station Rd, Lyminge, CT18 8HQ**. Full information available at www.ageuk.org.uk/hytheandlyminge and you can find us on Facebook (AgeUkHytheAndLyminge) and Twitter (@ageukhl)

Rhodes Minnis Evening Circle

In August Ann Finney gave us the story and music of Maria Callas. The evening began with the beautiful aria "One Fine Day" from Madame Butterfly. Maria was born in the USA then trained in Greece and Italy, eventually taking Greek nationality, singing at Covent Garden in 1974. We also heard extracts from La Boheme, Tosca and Carman amongst other operas. Maria died aged 53 and on the 20th anniversary of her death 7,250 CDs of hers were sold. The competition was won by Pauline Hodder with Ronnie Mozley 2nd and Marion Hoare 3rd.

On the 16th September Alan Haines is presenting "A Kick up the Sixties". On Saturday the 24th October we are holding a Coffee Morning for Children in Need at the Tayne Centre from 10am to 12 noon. Entry is free and there will be a cake stall, tombola and other activities as well as refreshments.

Our monthly meetings are held on the 3rd Wednesday at Rhodes Minnis Village Hall at 7.30pm, and visitors are very welcome. For details contact Diana Bennett on 01303 862134



Lyminge Friends

In August, we were entertained with an interesting talk about Jane Austin in Kent by John and Jane Buss and afterwards we had a very good Lunch in Etchinghill Golf Club.

On Wednesday 2nd September, Ian Porter will speak about The Real Downton Abbey and Upstairs Downstairs and on Wed 16th we are off for a Cream Tea at the Elham Valley Vineyard.

October is another busy month: on Wednesday 7th we have a visit from Wing Commander Simpson from the Battle of Britain Memorial in Capel Le Ferne, it is our Curry Night in the Gurkha Palace on Friday 9th and on Wednesday 21st we are off to the Yesteryear Museum in Battle and Jempson's of Peasmarch.

Meetings are 10.30 - 12.30 in the Rigden Room of the Tayne Centre. Entry is currently £2.00 and includes refreshments.

We are a friendly group and welcome new members. If you'd like to talk to one of us first, please call 863500.

ARTICLES YOU MAY WISH TO SEE:

How to safeguard your children when they are using the Internet	P1, P2
Etchinghill News....	P3
District Councillors Report....	P5
Lyminge Village Hall News.....	P10
Latest Photos from events around the villages ...	P11, P15

District Councillors Report - September 2015

Our North Downs West ward includes Lyminge, Postling, Sellindge, Stelling Minnis, Monks Horton, Stowting and Elmsted and you can see a 'profile' of this ward (and the other 12 wards in Shepway) on the council website at: www.shepway.gov.uk/your-council/democracy/ward-profiles

The ward profiles contain a wide variety of information on demographics, housing, health, the local economy; services and community amenities. Some of the data was specially commissioned by Shepway District Council so it may not be publicly available elsewhere in this format and, depending on how useful people find the information, it is planned to review and expand it. Do please have a look and send us any comments or updates you may have.

We hope to use this information to create a shared understanding across the council and community about each ward which will help us plan services and help other public and voluntary/community groups by for example providing data to support grant applications.

Using the ward profiles as a starting point we are also developing a ward plan and in July we met with representatives from the parish councils to see if we could find an overall theme. Those who attended thought it was useful to meet one another and found it interesting to have a conversation about common issues. "Improving the appearance of the ward" was the theme that emerged as the consensus. This would involve creating 'gateways' to the villages, dealing with overgrown public areas and village signs where none exist or require attention. It was agreed that each village would look at what needed to be done within the theme. Jenny and Susan would work this into a bid for funds from Shepway and other potential partners. We would aim to work round all the villages as and when funding was available. Other good ideas were raised at the meeting which could be themes for future projects.

We have both attended the July meetings of Lyminge and Postling parish councils and have been dealing with matters raised with us by individual constituents. We are still getting used to the new ward boundaries and dividing work between us so that we can cover the most ground but do feel free to contact either or both of us.

Finally an update on Operation Stack. We often go years between episodes of Operation Stack and it's remarkable how quickly things get back to normal afterwards. However, the disruption in July was so prolonged and had such serious impacts on people's lives and businesses that it is considered an issue of national importance. It has been discussed at COBRA (the name stands for Cabinet Office Briefing Room A) where senior members of the government discuss and decide actions to deal with major emergencies. The Prime Minister himself has been involved in the COBRA meetings on Operation Stack and, whilst this means we have attention on the problem and the prospect of funding, it also means that we are likely to have 'solution' imposed that may be unpalatable. Parking lorries on former airport in Manston is only a short term solution and understandably very unpopular locally. The extension of the existing Stop 24 lorry park at Junction 11 of the M20 (which Shepway has been working on for some time as a way of dealing with overnight lorry parking problems) seems certain to go ahead and could provide over 1,000 extra spaces within 18 months. The Prime Minister has demanded that everyone involved (local authorities, Highways England, Kent Police and the Department for Transport) work 'at pace' and announcements are likely soon.

Jenny Hollingsbee (Jenny.hollingsbee@shepway.gov.uk 07887918458)

Susan Carey (susan.carey@shepway.gov.uk 01303 670561) - Ward councillors for North Downs West, Shepway District Council



WINE TASTING

NOVEMBER 21ST 7PM

ETCHINGHILL VILLAGE HALL

*Have an enjoyable evening while you sample
a wide range of quality wines.*

Cheese board included.

£10.00 per person in advance.

£15 on the night.

(Over 18's only)

A wine expert will describe the various wines.

All you have to do is drink them!

There will be NO selling of wine on the night.

Limited numbers so please phone early to
reserve tickets.

PHONE JOHN 863819, OR SYLVIA 863547

Charity no 302736 (Any profits will go to the up keep of Etchinghill Village Hall)

LYMINGE DIG

On 6 May 2015 Dr Gabor Thomas, FSA gave a
monthly lecture to the British Archaeological
Association on

*'Places of Power and the Making of
Anglo-Saxon Kingdoms: New Archaeological
Perspectives from Lyminge Kent'*

It can be seen on YouTube using the following
link:

<https://youtu.be/fuqhPLzh3FE>

Rhodes Minnis Village Hall AGM

Tuesday 20th October 2015

7.30pm in Village Hall

Everyone who uses or has an interest in what
happens in the hall are very welcome to attend
the meeting.

We will be very happy to welcome you.

Tea/coffee and biscuits will be served.

theWI

INSPIRING WOMEN

Next meeting will be on Tuesday, 15th September at 2.30pm in the village hall. The speaker is Sandra Richards on the humorous side of district nursing. Visitors and any new members are welcome. Contact Barbara Syrett on 01303 265229 or Rita Warner on 01303 863503 for any further information.

Save the date of
31st October
for the return of



an auction of promises
in aid of



The Christmas Day
Lunch Club

More details next month.

Concert in Elham Church 18th September, 8:00pm

Come to St Mary's, Elham for a concert by the **Lyminge Handbell Ringers** and **St Mary's Ukulele Group** in aid of **Raleigh International** – a charity working with in-country volunteers to promote the safe and sustainable access to water in some of the world's poorest areas.

Please come and enjoy what will be a fun and relaxed evening !

Retiring collection for donations.

Lyminge Bowls Club

September is the last month of the outdoor bowling season, but members will meet up regularly during the winter for monthly lunches, our Presentation Evening and other social events. You would be welcome to watch the home games during September, which are as follows:-

Thursday 3rd	Today we play host to a mixed team from Aylesham & Snowdown.
Saturday 5th	Finals Day – for all our club competitions starting 10.00 am.
Tuesday 8th	A mixed team from Cheriton visit this afternoon
Saturday 19th	Ludo Cup – a singles club competition starting at 10.00 am.
Sunday 20th	Ladies v Gents – will the ladies manage to beat the gents this year?

All games except where stated start at 2.30 pm.



Lyminge Historical Society

Tuesday, 6th October 2015

7.30pm

THE TAYNE CENTRE

A talk on

1st World War Battle of Loos

Speaker: Doug Thorogood

New members and visitors are welcome.

Members: £10 per annum inclusive of talks

Visitors: £4 per person payable on the door

Tea and biscuits will be served.

Lyminge Historical Society

Mobile Tel. No. 07759 260816

Website: www.lymingehistoricalsociety.co.uk

"Make space in your life for the things that matter, for family and friends, love and generosity, fun and joy. Without this, you will burn out in mid-career and wonder where your life went."

- Jonathan Sacks

ROUNDWOOD HALL PAY & PLAY GOLF CLUB

Behind the line of conifer hedges on Stone Street (B2068) you will find a friendly & welcoming short golf course.

9 holes - £8.00 18 holes - £12.00
£2 more at Weekends & B/H

Stone Street, Lyminge
Folkestone, CT18 8DJ
01303 862260

Fantastic new
membership
opportunities



FRIENDLY RELAXED AFFORDABLE
www.roundwoodhall.co.uk

✂ SNIPPERS & CLIPPERS ✂ UNISEX HAIR SALON

The girls at Snippers and Clippers are pleased to announce that we have been open for ONE year on 1st September. We would like to thank all our clients for their custom and support, and look forward to serving you for many years to come

Lyminge Weather Statistics – July 2015

With thanks to Mr D. Godden for these weather statistics and notes.

	Temperature (°C)	Air Pressure (hPa)	Wind Speed (mph)	Total Monthly Rainfall
Maximum	35.3 (01/07/15)	1022 (02/07/15)	20.0 SE (26/07/15)	137.7mm (5.67 in)
Minimum	5.0 (29/07/15)	996 (26-28/07/15)	Highest Daily Rainfall	65.0mm (2.56in) (24/07/15)

July 2015 is notable for two reasons:-

1. Our temperature on 1st July was with 1.4°C of the record for England
2. In 40 minutes, between 6.20 & 7.01pm on 24 July some 38 mm of rain fell. The highest as far as my records go back -1969



Hythe Aqua Swimming Club is expanding its nationally accredited learn-to-swim programme and now has vacancies in its lessons that are held on Tuesday & Thursday evenings at Hythe Pool.

To book your place

Tel: 01303 862353 or checkout our website:

www.hytheaqua.org.uk  

Park House Sanctuary Boarding Kennels & Cattery

Park House, Stelling Minnis CT4 6AN

Brick-Built Heated Kennels ~ Daily Walks

Reasonable Rates

All dogs must be fully inoculated

Heated Cat Chalets Quiet Area

Inspection Invited.

To book or for further information, call us on

01303 862622

or email lord.whisky@btinternet.com

www.lordwhisky.co.uk

SATURDAY MARKET CANCELLED

for
September



...due to renovation of Hall.

We will be back in October. Sorry for any inconvenience to our shoppers and stall holders.

The Saturday Market Team

Coach & Horses



Senior Citizens 2 Courses Lunch

Monday - Saturday £6.95pp

Friday Food Theme Nights

4th September - Mexican

11th September- Italian

18th September- Indian

25th September- Polish

Quiz Night

Wednesday 30th September

Bookings and Contact: 01303 862694



Lyminge Handbell Ringers

The **Lyminge Hand Bell** group continue to introduce new music so look forward to the opportunity of playing these new pieces locally, so please consider booking us for your special celebration. You can come and hear us play before booking if you wish so you can select your own choice of music. We have an increasingly wide selection to choose from. All we need at the venue is a large table for our bells and music, room for up to 12 players and a minimum donation of £40 for our charity, the Nepali Children's' Trust. A small contribution to travelling costs is also appreciated for bookings more than 5 miles from Lyminge. Weekends and evenings only please and plenty of advance notice is helpful. Want more info or make a booking?

Call **Ro Edmond** on 863201 or email welldorm@aol.com

Rhodes Minnis Village Hall

Beetle Drive

Friday 25th September

at the Hall 7.30pm

Adults £2 – Children 50p

Teas, coffee and juice provided

There will also be a raffle

New players welcome to come and join in this old fashioned fun evening

New Lyminge Surgery
Greenbanks, Lyminge
CT18 8NS
Tel: 01303 863160

IMPORTANT INFORMATION FLU CLINIC

One Day Walk-in Flu Clinic
Saturday 3 October 2015
9am – 3pm

The Flu Vaccine is recommended for everyone over the age of 65 years or for those who have any of the following conditions:

Diabetes, Heart Disease, Chronic Lung Disease, Asthma, Chronic Kidney Disease, and those who are immuno-suppressed due to illness or treatment.

The Doctors at New Lyminge Surgery support these recommendations and encourage our patients to take up this offer.

ELHAM VALLEY AND WYE LIONS CLUB CHARITY QUIZ

Etchinghill Village Hall
Saturday 24th October
7 for 7.30pm

Max. Tables of 8 - £5 per person
Bring your own food, bar provided.

In aid of our Charity Trust fund
for local good causes.

Call Chris Hills
0794 174 4711
to book.

***** WANTED *** BUNGALOW IN LYMINGE**

If you or anyone you know is considering moving we would be very grateful if you could let us know....many thanks
Joan and Ron Wood..tel.no. 840441
e.mail - joron15@outlook.com

SITUATION VACANT Lyminge Village Hall

Is there someone, or a couple or even a group in the Village who would like to take care of the Lyminge Village Hall - someone to lock up and check the building at night, be a key holder, and maybe also interested in carrying out small repairs and supervise the cleaners?

There will be a small stipend for the service given by the committee.

Please contact the committee on 0749 7625 741.

THE TAYNE CENTRE

We have an Autumn fund-raiser to help ensure that we have sufficient funds to refurbish our Claydon Hall:



**10th October
at 3.00**



Afternoon Tea with Entertainment

Listen to Dave and Maggie, The Hoskins Duo, join in some songs and enjoy an afternoon tea, all for £4

ELHAM CIRCLE Presents

HARP RECITAL

Given by FEDERICA MASSONE

In St Mary's Church, Elham

On Friday 25th September at 7.30pm

Wine and canapés will be served during the Interval

Tickets £10 each

To purchase tickets contact:-
Sue Keen on 01303 840263 or
Judith Ridley on 01303 840485

In aid of the Kent MS Therapy Centre
Registered charity number: 801382



Lyminge Dramatic Society

For the first time we entered a float in the Venetian Fete on August 19th; our set builders expertly crafted the float and 8 members donned costumes from Alice in Wonderland and A Midsummer Night's Dream. A very successful evening was had by all.

On a less successful note we were unable to cast Dial M for Murder due to a lack of available men in their thirties and forties. If you are in this category (or any other age or gender group!) and would like to join the Society please contact Alex on 01303 862622.

If you have a spare moment grab a cuppa and browse our website: lymingedramaticsociety.co.uk

Watch this space as we are currently deliberating and planning our Autumn/ Winter Production to fill the gap left by Dial M. There definitely will be a production - more details to follow in subsequent newsletters.

Stream Clean

3 October
10.30am

See you there, in the Well Field, with your rakes, wellies, energy and enthusiasm.

ETCHINGHILL RESIDENTS' ASSOCIATION

Etchinghill Cinema Club

"THE SECOND BEST MARIGOLD HOTEL" (PG)

Monday, 21st September

Etchinghill Village Hall at 7.15pm

Entrance Fee £5 per head

includes Membership

FREE Refreshments and Raffle



Lorraine 863333 for info

VIDEO PRODUCTION MOTION GRAPHICS GRAPHIC DESIGN PHOTOGRAPHY WEB & EMAIL

At OCD we believe that what sets a business apart is its story.

We pride ourselves in creating content for your website and social media channels that engage and grow your audience.

From corporate videos and promotional films, animation and motion graphics to print and digital design, OCD have a combined 40 years experience producing creative content that is proven to increase conversion and drive sales.

Whatever your creative needs, OCD can tailor a solution to suit your budget. It all starts with a conversation. Get in touch and let us help you tell your business story.

WWW.O-CD.CO.UK
EMAIL: HELLO@O-CD.CO.UK



LYminge

0

CLUB

Wednesdays
(Term-Time)

£1 Entry Fee

11 - 16's

@ Lyminge Village Hall

6:30 - 8:00pm

FYP
www.fyp.org.uk

in partnership with
Lyminge Youth Action

f

Free
WiFi

THE ETCHINGHILL MARKET

Saturday 5th September

If you would like to come along to shop our various food and craft stalls, including home made jams and cakes. Also aromatherapy products, hand made jewelry and wood turning.

Or just enjoy a bacon roll and a cup of tea.

Etchinghill Market is the place to be

Saturday 5th September and every first Saturday of each month from 10am

Etchinghill Village Hall

For further details contact John on 863819. Charity No. 302736

Looking for homecare services?

Our experienced Care Assistants are on hand to offer support to the elderly, people with a learning or physical disability or other care needs for home services no matter your needs -

- ✓ One call a day to multiple calls
- ✓ Short term or long term packages
- ✓ Home from hospital assistance
- ✓ General assistance or complex care
- ✓ Weekday, weekends, days, night call times



Contact your
local branch today

01303

250200

www.nurseplusuk.com



Direct Payments Accepted

Letters to the Editor.....

I wanted to explain to local residents the reasons for changes to our drive at the lower end of Teddars Leas Road in Etchinghill. The problems that need alleviating are floodwater, mud, illegal parking, and use by large heavy vehicles. We have recently even had foreign registered cars driving on our lawn and garden.

It is our intention to make these changes while still allowing walkers to use the drive as a refuge from traffic.

Paul Trayner Wolver Hollow.

Last month's 'introduction' from the Lyminge Village Hall committee was curious. There was no introduction. No identification. No committee members named, not even a chairwoman/man. Perhaps they could try again?

Paddy Fraser (North Lyminge)

Village Hall News

Since the AGM, the newly elected committee has met several times and teams have been allocated to start working on several fronts. The committee includes Pippa Hamilton, Linda Howard, Gareth Hurford-Jones, Kate Kellett, Vicki Lawrence, Sandra Luck, Sheamus Maher, Owen Standen (Chairperson), Jo Strickland and Heath Murphy.

Initially, we are focused on engaging with all Parish members by using the widest communication channels possible. At the same time we wish to enable as many members as possible to join and contribute to the teams.

A new web site, www.lymingevillagehall.org.uk and sponsored by Red Dragon, is underway and will be up and running shortly. The new site will include:-

- Dates and location details for the forthcoming committee meetings - all meetings are open and transparent and all parishioners are welcome to attend. This section will include agendas and minutes.
- An on-line booking system for the hall
- A suggestions page for ideas at the hall and to feedback on events
- A 'What's On' page
- Village hall updates, e.g. refurbishment news
- Advertising opportunities for local businesses, both on the website and in the hall
- A 'Who's Who' page of the committee and co-opted members.
- And much more – watch this space

Red Dragon is the first of, what we plan will be, many local sponsors. If you are a local business like Red Dragon and you want to support, and be supported by your village hall, then please contact us on Lymingevillagehall@outlook.com

An immediate priority has been to concentrate on the nuts and bolts of the hall, safety issues, structural survey work, documentation regularisation, etc. There is much to do!

An immediate date for your diary is the annual firework display. This year we are planning to combine **Halloween and Fireworks** night in one event on **31st Saturday October**. Planning includes Ghoul walk and a supervised "Trick or Treat" route for the younger generation followed by special events in the Hall, all climaxing with a fireworks display which will be performed by a professional company.

Watch this space for a "LOVE YOUR HALL" day – currently pencilled in for the school half term(s) - the plan is for a Lyminge version of 'DIY SOS'. Right now we are looking for a local interior (and exterior) designer to draw up some ideas and then we can really get planning.

In the meantime, is there someone, or a couple or even a group in the Village who would like to take care of the building – someone to lock up and check the building at night, be a key holder, and maybe also interested in carrying out small repairs and supervise the cleaners? There will be a small stipend for the service given by the committee.

More news next month; meantime please check our social media sites for updates (see our advert on P13) and note the new Booking Line is now in operation on 0749 7625 741.

Your Village Hall Committee

The Lyminge Association and Newsletter seeks to be:

- *inclusive*
- *supportive*
- *creative*
- *in touch with community needs.*

Should you have any ideas, suggestions, scribbles or whims of an idea relating to any of these topics, please send them to the Editor (details at bottom of page).



Lyminge Gardeners' Society



presents

"GARDENING FOR BEES"



A talk by

Dr Nikki Gammons

Tuesday 15th September 2015

7.30pm

The Tayne Centre, Church Road, Lyminge

Members £2, Non-members £4

(New members & visitors always welcome)

Refreshments, Homemade Cakes, Raffle

In Aid of Lord Whisky Sanctuary Fund

Registered Charity: 283483.

Park House, Stelling Minnis, Kent CT4 6AN

Tel: 01303 862622 Fax: 01303 863007

www.lordwhisky.co.uk ~ lord.whisky@btinternet.com

BOOT & AUTUMN FAYRE

Saturday 19th September

at Park House Animal Sanctuary

Stelling Minnis, nr Canterbury CT4 6AN

Boot Fair from 8am - cars £5.00/vans £7.50

Entertainment from 12 noon

Lots of stalls ~ Tombola ~ Refreshments

Admission by donation ~ Plenty of free parking

For further details, ring 01303 862622

Rhodes Minnis Village Hall

Table Top Fair

Saturday 10th October, 10am-2pm

(Stall holders from 9am)

Tables at £5

To book, please ring 01303 863660

Refreshments will be available

Are you a Walker? Interested in a Walking Festival in the Elham Valley?

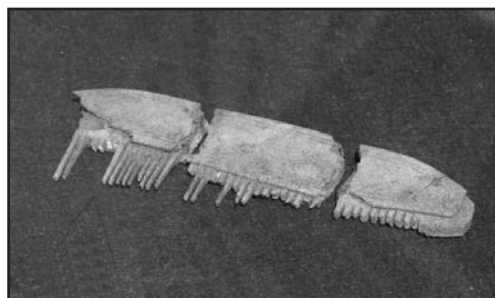
Chris Jelly and the Elham Walkers are Welcome group are interested in organising an annual walking festival spanning all the villages in the Elham Valley. The benefits to the community include a boost to our shops and local economy, helping to keep our footpaths open and in good condition, and helping to promote usage of the No.17 bus.

Lyminge Parish Council supports the idea and asks if there are one or two people within the Parish who would like to help Chris take this forward.

You can contact Chris on 01303 862933, email chris@cjelly.plus.com www.walkersarewelcome.org.uk.

Please also advise Crispin Davies, Parish Clerk, 01303 239500 email lymingepc@virginmedia.com

Lyminge Dig 2015



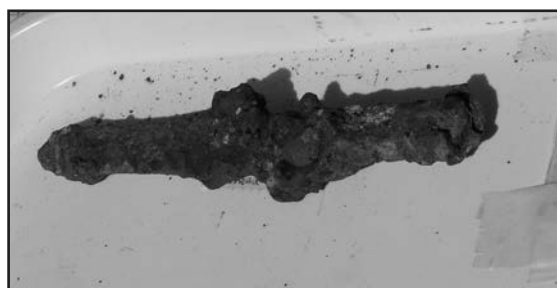
▲ A comb discovered in three separate pieces on Friday 21st. The pieces were in different locations.

Dr. Gabor Thomas giving a site tour on 22nd August, explaining that the excavated feature in the picture was in fact a sinkhole that had appeared on Tayne Field in Saxon times.

For the latest information see the Lyminge Archaeology Blog - blogs.reading.ac.uk/lyminge/

◀ A recently uncovered iron Saxon spearhead awaiting cleaning and conserving.

An unusual garnet brooch also found during this dig that had lain under Tayne Field since it was lost over 1000 years ago. ▶



Etchinghill Baby & Toddler Group

We are a friendly toddler group, which caters for babies and children from 0 to school age. Crafts, messy play, trikes, toys and a singing session are included each week. In dry weather there is also outside access for the children to play.

We meet on Wednesdays between 10am -12noon at Etchinghill Village Hall. We charge £2 per family, 1st session is free. Tea/coffee and healthy snacks are provided. If you have any queries please contact

Julia Tesoro 07809705309

Lyminge Baby and Toddler Group

The group starts again from Tuesday 8th September. We'd love you to come along and join us for lots of fun. We meet every Tuesday morning at the Tayne Centre 10.30-12.00, term time only. *(Please note the group will not be running on the 15th September due to maintenance at the Tayne Centre).*

Cost: £1.50 per session, including refreshments for all.

Call: with any enquiries – Jenny 07 564130569 or Sarah 07 984939220.

E-mail us at lymingetoddlergroup@yahoo.co.uk

Rhodes Minnis Toddler Group

We are back on Thursday 10th September, 10am-12 noon

Hope to see our regular members as well as welcoming Mums, Dads, Grandparents and Child Carers.

We charge £1.50 per morning – to include mid-morning refreshments.

For more information phone **Elaine** on **01303 863096**



Lyminge Pre-School



**'OUTSTANDING' – in every category
Ofsted Feb 2011**

**We are now open between 8am and 6pm
ALL YEAR ROUND**

We are a well established pre-school with committed, enthusiastic and highly qualified staff passionate about providing the highest standards of childcare.

To arrange to meet the team, please call:
01303 863149 (day) or 07709420736 (eve) or email
lymingepreschool@gmail.com and visit our website
www.lymingepreschool.org.uk

SHEPWAY LIFELINE

*HELPING PEOPLE TO LIVE INDEPENDENTLY IN THEIR
OWN HOME FOR LONGER*

The service they are renowned for is the red button pendant that is worn around the neck or wrist. In an emergency, when it is pressed, it calls for emergency assistance. The Lifeline really is a life saving service and is highly valued within the community. By enabling people to live in their own homes for as long as possible, it avoids the need for expensive residential and nursing home care.

Shepway Lifeline is Telecare Services Association accredited and has an innovative 24/7 monitoring centre, supplying all facets of Telecare alarms, including care and security solutions for vulnerable individuals, lone workers and local businesses.

To contact Shepway Lifeline: -

Phone: (01303) 242615 or 242971

Address: Shepway Lifeline, Civic Centre, Castle Hill
Avenue, Folkestone, CT20 2QY

Email: lifeline.proactive@shepway.gov.uk

Website: www.shepway.gov.uk/lifeline

Sign to Nursery Rhyme Classes

Etchinghill Village Hall on Tuesday mornings

Come and learn to sign with your baby. Signs are taught using nursery rhymes, action songs and musical instruments.

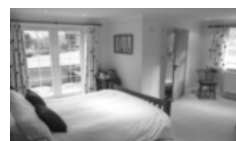
Spaces are limited so to book your place and for more information please call

07800 737936 or go to
www.daisychaincourses.co.uk



**Daisychain
Courses**

Bridge Cottage Bed & Breakfast 4 Stars Silver Award



**Luxury accommodation in a tranquil setting
Chris & Alison, Shuttlesfield Lane, Ottinge
01303 862933**

www.bridgecottagesimplybandb.co.uk

FOLKESTONE DISTRICT NATIONAL DANCE GROUP

Meets on Tuesdays 7.30 – 9.30 pm from late September to mid-June at

Newington Village Hall, Newington, Folkestone

to learn and enjoy folk dances from many different countries. No experience or partner necessary.

Tel: **01303 249199** or **01227 709557**

Shuttlesfield Barn – 4 Star Gold – Self Catering

Rural location. Two bedrooms, ensuite bathroom and wetroom. Disabled facilities. Short and longer stays.



Families, dogs, horses welcome. Located on walking, cycling, riding routes. Heated outdoor pool in summer.



Info@shuttlesfieldbarn.co.uk Tel: 01303862729
www.shuttlesfieldbarn.co.uk CT18 8LB

bus times

for buses from **Lyminge Post Office to Folkestone Town Centre** via Etchinghill & Cheriton High Street

MONDAYS TO SATURDAYS except Bank Holidays

There are route 17 buses at 0705 (not Saturdays), 0749, 0909, 0939 (not Saturdays), 1004, 1034, 1104, 1204, 1304, 1404, 1504, 1614 (1619 on schooldays), 1629 (schooldays only), 1654 (schooldays only), 1719, 1749, 1834, 1929, 2113 and 2313.

There are also route 18 buses to Sandling Station & Hythe - for times see our website or call the number below.

SUNDAYS & BANK HOLIDAYS

There are route 17 buses at 0947, 1147, 1347, 1547, 1802 and 2002.

for buses from **Lyminge (opposite Aberdeen House) to Canterbury City Centre** via Elham, Barham & Bridge

MONDAYS TO SATURDAYS except Bank Holidays

There are route 17 buses at 0727 (schooldays only), 0732, 0752, 0903, 0938, 1028, 1128, 1228, 1328, 1443, 1613, 1703, 1803, 2001 and 2201.

There are also route 18 buses to Canterbury via Stelling Minnis and Bossingham - for times see our website or call the number below.

SUNDAYS & BANK HOLIDAYS

There are route 17 buses at 0827, 1027, 1227, 1427, 1642 and 1842.

These times will operate from 2nd November 2014.

timetable information 0871 200 22 33

Calls cost 10p per minute plus network extras

www.stagecoachbus.com/eastkent



TAYNE CENTRE HALL HIRE

Previously known as the Lyminge Methodist Church Hall

Clayson Hall

1 October to 31 May (including heating) £9.00 per hour :
£32.00 per 4 hour session : £64.00 full day

1 June to 30 September

£6.50 per hour : £23.00 per 4 hour session : £46.00 full day

Rigden Room (Parlour) with heating, if required*

£6.50 per hour all year (*electric - over heaters).

Burren Room with heating, if required*

£5.00 per hour all year, (*electric - over heaters)

Overnight Stays

1 June to 30 September £40; 1 October to 31 May £55

For any enquiries please call **07971 722 401**



YOUR LYMINGE VILLAGE HALL



Reg. Charity: 28145

The hall has two meeting rooms and a large hall; great for everything from dances, fun quiz nights and theatrical events. Hire includes access to fully equipped kitchen, servery hatches and bar (licence available), all with easy car parking.

NEW dedicated booking line on 0749 7625741

where Kate Kellett or Pippa Hamilton will be delighted to discuss your individual requirements.

Examples of prices for the main hall are: Friday or Saturday evening £65.00, weekday evenings £20.00 and all day Saturday £135.00

New Website: www.lymingevillagehall.org.uk



@Lymingevhall



Lyminge Village Hall
(Community Organisation)

info@lymingevillagehall.org.uk

ETCHINGHILL VILLAGE HALL HIRE FEES

The next time you are thinking of holding a function you should try Etchinghill Village Hall, which holds the highest Hallmark accreditation level, with its excellent facilities, including ample parking space.

The standard hire charge for the main hall and kitchen are:

Weekdays	£10.00 per hour
Saturdays	£12.00 per hour
Sundays	£12.00 per hour

During the winter months (1 November to 31 March) a Winter Supplement of £1.00 per hour is added to the above rates.

Special rates apply for weddings and all day events with a range of discounts on the above rates applying to all lettings of more than three continuous hours and additional discounts are available to Etchinghill Residents and Regular Hirers.

The use of a separate Committee Room is also available. For all bookings or enquiries please contact:

Sylvia Williams on 01303 863547

Rhodes Minnis Village Hall

Charity No.800345

Rhodes Minnis Village Hall is located 2kms (1¼miles) from Lyminge and just off Longage Hill and Whitehorse Lane in Chapel Lane

The hall, which holds Hallmark accreditation, is ideal for children's parties, band practice, quizzes, meetings and fundraising events and has the capacity to take parties of up to 100. The rates include the use of the kitchen.

Rates

Mon to Fri	£15 per session	£40 all day
Sat & Sun	£20 per session	
	£30 for evening session and	£60 all day

Sessions

AM session	08.30 - 12.30
PM session	13.30 - 17.30
Evening session	18.00 - 23.45

There are special rates for regular users.

For all bookings and enquires please contact:

Martin Fry 01303 863177 or 07849217793 or e-mail: book@rmvh.org.uk

Sibton Park Cricket Club

We extend an invitation to our local residents, please join us on match days and selected evenings and take advantage of the Club's outstanding venue, facilities and fully licensed bar.

Having a Celebration? Require a regular venue?

The club house and grounds are available

**For further information or to make a booking please contact: Andy & Clare Allon
07817 751262 - aallon44@yahoo.co.uk**



This page is printed to give readers and organisers the opportunity of planning events without clashing with existing ones, which are already in the 'diary'. It is not intended as a means of advertising and we take no responsibility for errors or omissions. Acceptance is at the discretion of the editor. Please send your updates by email to pb@pbarnes20.plus.com or via methods outlined on Page 2.

Location and name codes follow:

C&H: Coach & Horses; **ECC:** Etchinghill Cricket Club; **EVH:** Etchinghill Village Hall; **ERA:** Etchinghill Residents' Association; **ES:** Elham Square; **JC** Jubilee Centre; **JF:** Jubilee Field; **LB:** Laing Bennett; **LL:** Library; **LMC:** Lyminge Methodist Church; **LPC:** Lyminge Parish Church; **LSH:** Lyminge School Hall; **LVH:** Lyminge Village Hall; **LW:** Lord Whisky; **NP:** Nailbourne Parlour; **NVH:** Newington Village Hall; **PC:** Postling Church; **PH:** Lord Whisky, Park Hse. **PVH:** Postling Village Hall; **RVH:** Rhodes Minnis Village Hall; **RMC:** Rhodes Minnis Church; **SNL:** See News Letter for info; **TC:** Tayne Centre.

One Off or Irregular Events

Date	Time	Event	Where	Tel. No.	Date	Time	Event	Where	Tel. No.
4 September		Lions Charity Golf Day	Sene Valley	01303 893314	24 October	7pm	Lions Quiz Night	EVH	01303 893314
12 September	AM	Boot Fair	ECC	07896717787	31 October		Halloween Party and Fireworks	LVH	
13 September		Garage Safari		863537	31 October	7.30pm	Auction of Promises		863256
19 September	10am	Internet Safety Awareness	LPC	01227459401	8 November	11am	Service of Remembrance	LPC	862073
19 September	AM	Boot Fair	ECC	07896717787	19 November	5pm	Christmas Lights On	LB	
26 September	AM	Boot Fair	ECC	07896717787	21 November	7pm	Wine Tasting	EVH	863819
3 October	10.30am	Stream Clean	Well Field		28 November		St Nicholas Fayre	LPC	862073
4 October	11am	Harvest Festival Service	LMC	863049	2-5 December	7.30pm	Play - watch this space!!	LVH	LB
5 October	7.30pm	Lyminge Association AGM			12 December		Haywardians Concert		
10 October	AM	Boot Fair	ECC	07896717787	20 December	6pm	Carols and Candlelit Service	LPC	
10 October	3pm	Afternoon Tea Concert	TC						
10 October	7pm	Autumn Quiz	LVH						

Weekly Events

Day	Time	Event	Where	Tel. No.	Day	Time	Event	Where	Tel. No.
Mon	10am	Open House	EVH	863394	Wed	6pm	Karate for Juniors	EVH	07554004526
Mon	10am	Bridge Club	BC	863177	Wed	7pm	French Conversation	KH	862972
Mon	10.30am	Lyminge Larks (Singing)	TC	01233750223	Wed	7.30pm	Cantores Domincae Choir	LSH	01233840961
Mon	11am	Cookery	JC	269602	Wed	8pm	Scottish Country Dancing	EVH	862761
Mon	2pm	Computer Buddy (need to book)	LL	862180	Thur	9.30am	Baby Rhyme Time	LL	862180
Mon	2.30pm	Monday Fellowship	TC	862164	Thur	10am	RM Toddlers Group	RVH	863096
Mon	5.45pm	Lyminge Youth Drama Group	TC	862602	Thur	10am	Art Group - Morning	TC	211364
Mon	6.30pm	Judo Club	LVH	862946	Thur	11am	Shopping trips to Supermarket	JC	269602
Tues ¹	10am	Baby & Toddler Group	TC	863274	Thur	2pm	Art Group - Afternoon	TC	862972
Tues	10am	Sign to Nursery Rhyme Classes	EVH	07800737936	Thur	6pm	Ballroom and Salsa Dancing	EVH	07967979610
Tues	10.30am	Art Class	JC	269602	Thur	6.45pm	Short Mat Bowls	LVH	863842
Tues	11.15am	Chairrobics	JC	269602	Fri	10am	Talk Time	LL	862180
Tues	6pm	Football Training	JF	07967342226	Fri	11am	Seated Exercise	JC	269602
Tues	6.45pm	Short Mat Bowls	LVH	863842	Fri	5pm	Hawkinge Flyers (Lyminge Branch)	Katrina	07881457994
Wed	10.15am	Mature Movers (Exercise)	TC	862873					

Monthly Events

When	Time	Event	Where	Tel. No.	When	Time	Event	Where	Tel. No.
3 rd Mon	7.30pm	Etchinghill Cinema	EVH	863333	3 rd Wed	7.30pm	RM Evening Circle	RVH	862913
Last Mon		Parish Council Meeting	SNL	239500	4 th Wed ⁴	11am	Singing For Health	JC	862364
1 st Tues	10.30am	Reading Group	LL	862180	Last Wed	7.30pm	Quiz Night	C&H	862694
1 st Tues	11am	Reminiscence	JC	269602	4 th Fri	7.30pm	Beetle Drive	RVH	862616
1 st Tues ²	7.30pm	LHS Talk/Event	TC	862972	Last Fri	1.30pm	Team Quiz	JC	269602
3 rd Tues	9.45am	Family History	LL	862180	1 st Sat	10am	Village Market	EVH	863819
3 rd Tues	2.30pm	Etchinghill W.I.	EVH	863503	2 nd Sat	10am	Postling Ch. Coffee Morning	PC	863536
3 rd Tues ³	7.30pm	Gardening Society	TC	862264	3 rd Sat	8am	Saturday Market	TC	862164
1 st Wed	10.30am	Lyminge Friends	LMP	862598	Last Sat	11am	Poetry Group	LL	862180
2 nd Wed	10.30am	Mothers Union	NP	862221	3 rd Sun	10am	Parish Walk	Richard	862015

¹ In term time only ² Except Jan, Feb, July and August ³ Except Jan, Feb, Aug ⁴ Except Aug and Dec

Out and About

Do you have any photos of local events or local groups in action, please call 01303 862699. Give your group a FREE plug!

Around 150 people gathered to be entertained by the **Rude Mechanical Theatre Company's** production of Babi Babette on Tayne Field on 2 August. This fabulous show delighted the audience with its slapstick humour, a clever script, superb costumes and, of course, original music performed by each of the talented actors. The Company visits Lyminge each year during the summer as part of their open air tour of rural venues in the south east. Always eagerly awaited, their shows never disappoint - indeed they have become a high point of the summer!



▲ **Lyminge Friends'** meeting on Wednesday 5th August was held at Etchinghill Golf Club where they enjoyed a lovely meal.



▲ Congratulations to the winners of the **Rhodes Minnis Flower Show** on 1st August. Councillor Jan Holben, centre, presented the trophies.



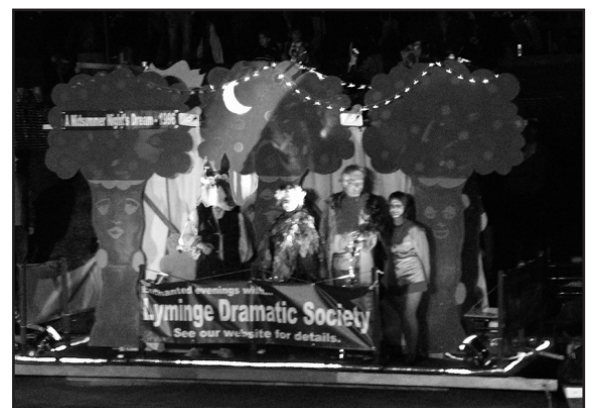
More congratulations ! **Lyminge Flower Show** winners on 8th August. Inset - Jack Martin with his Vegetable Train which won a First Prize beating adult entries !

Mystery Photo



Last month's picture was a detail of the Lyminge Village sign. It was actually the one near Yew Tree Cross. It might be easy to see what it is, but which one ??

Lyminge Dramatic Society did the village proud with their first entry to the Hythe Venetian Fete on 19th August. The double-sided float featured Alice's Adventures in Wonderland on one side and A Midsummer Night's Dream on the other side.



D.M.B. Plastering

All aspects undertaken
Interior. Exterior. Plastering. Rendering.
Coving. Ceilings Wall. Floors
Finest quality assured. CSCS Certified.
26 years experience.
Free estimates. Reliable service. Fully insured.
Call David on 07818 607209

P Davis + Co

General Builders and Roofing Specialist
All work undertaken
Call for free estimate

Tel: 01303 863049 or 0784 6769643

Personal Computing

For straightforward I.T. advice, solutions
and training

Contact: **Steve Ashman**
862869
sra@ashman-consulting.co.uk



CARE FOR YOUR FEET

IAN COX MSSCh MBChA CHIROPODIST
at AGE UK HYTHE AND LYMINGE

Treatments include toenail cutting, corns, hard skin, fungus and more
Prices from £12.00

For further information and to book an appointment
'phone 01303 269602



Wilco Plumbing & Heating

Central Heating Installations & Repairs
Gas & Oil Boiler repairs & replacements
5 Year Guarantee on Worcester Bosch Boilers.
Local Experienced Engineer, Emergency plumbing 24/7 call out
Registered with the Institute of Plumbing
Gas Safe Registered-OFTEC Registered
01303 862173 07860 452640
paul@wilcoplumbing.co.uk www.wilcoplumbing.co.uk

TOBY'S TREE SURGERY

Thinning - Reducing - Maintenance - Felling
ALL TREE WORK, BOTH PRIVATE AND COMMERCIAL,
UNDERTAKEN BY OUR NPTC TRAINED OPERATIVES
Professional Friendly Service

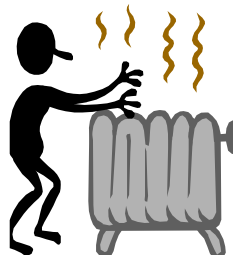
FREE ESTIMATES - FULLY INSURED

Contact Toby Griggs:

07854 098 395 or (01303) 863642

D. SCRIVENS

PLUMBING & HEATING
Oil Fired Boiler Installation,
Commissioning, Service and Maintenance.
Unvented Hot Water Systems - Solar Water Heating
Central Heating - Water Softeners - Bathrooms - Showers - En suites
Approved 'Aqualisa' Installer
WATER INDUSTRY 'APPROVED PLUMBER'
FULLY INSURED
07810 897076 scrivensplumbing@aol.com



K & M LEWSEY LTD

plumbing & heating engineers
established 1969

Registered plumber

Gas ACOP approved engineers

01303 264535

manned office

daytime Monday to Friday

Total garden care for all your needs

TIM MILLETT

Grass Maintenance, General Gardening, Small & Medium
Size Tree Work, Stump Grinding and Wood chipping
Fencing Repairs & New Installations
Turfing, Hard & Soft Landscaping
Free Estimates - Fully Insured

01303 863676 07752 880583

Email: info@tmhorticulture.co.uk



Respiratory
Rehab

Bringing health home

Providing private community respiratory
physiotherapy, general physiotherapy and
rehabilitation to East Kent

T: 07904482097

E: kris@respiratoryrehab.co.uk

W: www.respiratoryrehab.co.uk

Kris Bahadur. Chartered Physiotherapist.
MSc Physiotherapy, BSc (Hons), MCSP, SRP

N.P.C.

Domestic Appliance Services

*Service and repair of washing machines, tumble driers,
dishwashers, cleaners and small electrical work. For a
prompt and friendly service*

Call Neil Collard 01303 892234 or 07798716044
or **www.npcdomesticapplianceservices.co.uk**

Auto Economy Centre
Fully equipped Mechanical Repair & Service Centre
with the latest diagnostic equipment
MOTs £39.95

01303 863656

Orchard Garage, Canterbury Rd, Etchinghill
www.autoeconomycentre.com

Old English Pine

Antique, repro pine, oak and French-style painted furniture with beautiful and reasonable priced accessories to make
your house a home. Bespoke pine units made to order. Huge shop - over 3 floors. Open 7 days a week.

Tel: 01303 248560 www.oldenglishpineinkent.co.uk 100/102 and 90 Sandgate High Street, Sandgate



**Lyminge
Country
Bakery**

01303 720126
www.lymingecountrybakery.co.uk
baker@lymingecountrybakery.co.uk

A Selection Of Our Produce

- Traditional Loaves • Low GI Bread • Sweet Products
- Mini Loaves • Artisan Bread • Baguettes
- Specialty Loaves • Savoury Products • Bakery Specials

✂ **SNIPPERS & CLIPPERS** ✂ UNISEX HAIR SALON

LYMINGE SALON

Facial Waxing : Gents Welcome : Shellac Nails
Free WiFi : Appointments not always needed

01303 647222 : info@snippersandclippers.co.uk
Station Road, Lyminge, CT18 8HP



Local Bookkeeper

Sole Trader & Small Business Accounts
VAT, Self Assessment, Payroll, CIS
& General Administration Services



Call or e-mail:

Tel: 01303 864229 Mob: 07702 321686

e-mail: tash@bestbookwork.tax

www.bestbookwork.co.uk



T. Metcalfe Fencing Contractors

Approved Expert Installer for Jacksons Fencing
Established over 30 years
Fully insured - Highly experienced teams



Panel fencing, gates, decking, pergolas, post & rail,
stock fencing, security, landscaping & tree surgery.

01303 840201 07790 290 155

metcalfefencing@btinternet.com

Proprietor - Derek Burr,
Ash Ridge House, Elham



KENT & SUSSEX HOLIDAY COTTAGES

With over 250 properties in this region and an expert local team, call now to book your
2015 break or to talk to one of the team about letting your property for holiday rentals.

— **01304 619 444** —

www.kentandsussexcottages.co.uk info@kentandsussexcottages.co.uk

12 King Street, Sandwich, Kent CT13 9BT

DO YOU NEED HELP IN YOUR GARDEN ?

Sean Godden can do all those jobs that take up your spare time.

Weeding -turf laying - lawn cutting/edging

Hedge/tree maintenance – waste tip runs

Fence & decking painting/treating

Brick, pathway cleaning.

TEL. 07538988914 – Email 'sgodden@hotmail.co.uk'

Essential Beauty

*reflexology : aromatherapy : collagen mask facials
non-surgical perfector : facials : cuccio gel varnish
manicures & pedicures : waxing & eyelash/brow tinting*

Therapist with 20 years experience

Call Janene Moat 01303 840052

The Limes, High St, Elham.

Free eyebrow tidy for new clients.

Quality Cat and Dog Food from **OSCAR**

Free delivery to your door. Honest label, no additives
or animal derivatives. No minimum order or contract.
Expert advice available.

Call **Laurence** on **01303 777888** to
discuss your supplies and for a free
sample of cat or dog food.



SEATHWAITE BOARDING CATTERY LTD.

Supporting Rhodes Minnis Cat Sanctuary

GREEN LANE, RHODES MINNIS, CT4 6XUTEL: 01303 862243 (Registered charity 262245)

ONLY CATS BOARDED, IN QUIET COUNTRY LOCATION

Individually heated chalets. Single cat £7 per day, a reduction for 2
or more cats. All cats boarded with us must have current vaccina-
tions against cat flu & feline enteritis. All profits from the boarding
cattery go to support homeless cats in the Sanctuary.

RHODES MINNIS CAT SANCTUARY

has a wide variety of cats available to caring homes.

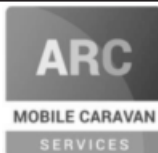
Alan Croucher Caravan Engineer

Have your Caravan, Motorhome, Horsebox or
Trailer serviced without the fuss of taking it
to a workshop.

www.arcmobilecaravanservices.com

Mobile: 07921 480919 Home: 01303 863194

*Non mechanical only on motorhomes and horseboxes



East Kent Foot Care

Mobile Foot Health Practitioner

Jo Shapter BSc (Hons), MCFHP, MAFHP

Treating and managing common foot problems,
corns, callus, verrucae, thickened nails,
toe nail management, fungal problems,
diabetic foot assessments etc.

Call: 07745 532075

Member of the British Association of Foot Health Professionals



VICTORIA'S HAIR AND BEAUTY SALON 2 Cullings Hill, Elham, CT4 6TE

MANICURES / PEDICURES / CND SHELLAC / ST TROPEZ SPRAY TAN / FACIALS / MASSAGE / TINTING /
HOT STONES / HAIR / PAMPER PACKAGES / WEDDING MAKE UP / GIFT VOUCHERS

01303 840 931 / www.victoriashairandbeauty.com





Ralph Allard Chimney Sweep



All chimneys, boilers and stoves swept.
Brush and Vacuum. Certificates issued.
HETAS and NACS registered, fully insured.

Member of National Association of Chimney Sweeps

01303 844465 or 07813716654

THE CLINIC
Garden Suite
Pendragon House
4 Station Road
Lyminge
Kent CT18 8HP
01303 863359



info@theclinic-lyminge.co.uk
www.theclinic-lyminge.co.uk

REGISTERED OSTEOPATHS & MEDICAL ACUPUNCTURIST

Adam Price B.Sc Hons (Ost) Katie Price B.Sc Hons (Ost)

The Clinic 01303 863359 or mob: 07980 897382

- Treatment of lower back pain, both acute and chronic
- Treatment of tension/cervical type headaches both acute & chronic
- Treatment of various stiff & painful arthritic conditions
- Treatment of sports injuries, both soft tissue & skeletal
- Deep tissue back, neck & shoulder massage for symptomatic relief

The cost of your treatment may be recoverable from your insurers. Please check



Sunhouse Electrical

Your local reliable Electrician

Part P Registered & Elecsa Approved

Fully Insured & On Competent Persons Register

For a free quotation & advice call James on

01303 766333

www.sunhouse-electrical.com

GOSBEE CONSTRUCTION

Over 30 years experience. Jacksons Expert Installer
Reliable. Friendly. Professional

Property Maintenance
Hedge & Tree Cutting
Tarmacadam Works
Grass Cutting

Building Work
Garden Design
Landscaping
Fencing & Gates

Ponds
Patios
Driveways

For a free, no obligation quote: **07974 835511 or 01303 863337**
Visit our website: gosbeeconstruction.co.uk
E-mail us: info@gosbeeconstruction.co.uk

S R Accounting and Business Solutions LLP

"Working hand in hand with your business"

Denise Roberts, ACIS, ACMA & David Sayle

Qualified accountants with a combined experience of over 50 years. We offer business start-up advice, business planning, monthly & annual accounts, VAT & tax submissions, full payroll service, company secretarial service.

droberts@sr-accounts.co.uk

01303 862559

0751 1097707 www.sr-accounts.co.uk



MANOR
VETERINARY CLINIC

We care for them all, great and small

Lyminge Clinic: Methodist Church Hall
Mon, Wed & Fri pm

01303 273203

www.manorveterinaryclinic.co.uk

STERRY'S

*Independent
Funeral Director*

01303 272525
93 Cheriton High Street
(opp Co-op)

01303 264400
41 High Street, Hythe
(opp Lloyds Bank)

Always here for you; 24 hour service. Home visits on request.
Choice of pre-paid funeral plans

Red Dragon I.T. Ltd.



- Windows, Mac & Linux Systems
- PC Health Checks
- Wired & Wireless Networks
- Website Design
- Graphic Design

T: **01303 723456** | E: info@rdit.co.uk | www.rdit.co.uk
2 Station Road, Lyminge, Folkestone, Kent, CT18 8HP

TIME FOR HEALTH! WEIGHT LOSS CHIROPRACTIC CARE

(The easy way!)

(Humans, horses, dogs & cats)

Back pain, neck pain,
arthritis, stiffness & much more
www.backtostraight.com

BACK TO STRAIGHT
CHIROPRACTIC
GENTLE TREATMENT FOR HUMANS, HORSES, CATS AND DOGS

Will Wright: 07905 031850/01303 863460

LYMINGE FOOD AND WINE 01303 862225



We are here to serve you
Mon. – Sun. 7:00am to 9:00pm
including Bank Holidays
National Lottery Here



South East Aerial & Satellite Solutions

Digital – Freeview – Satellite – Aerials

Supply and fit of quality digital installations, FREEVIEW, SKY, aerials, poor reception and problem solving, upgrades and repairs by fully accredited engineers

Free quotations and advice, fixed prices, fully insured

Freeview

NO CALL-OUT CHARGE

freesat

07968 659404 - 07825168010 - 01303273640

AMV

FENCING, GARDEN AND LAND MAINTENANCE

No Job Too Small – Free Quotations – Reliably and Professional Service

Fencing & Gates : Groundwork & Driveway : Patios & Block Paving : Tree Surgery & Hedges : Lawn Mowing & Garden Maintenance : Pest Control

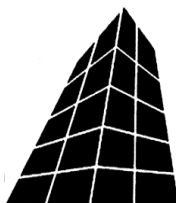
Contact: Alfie Vassar 07860216442 or amvmaintenance@hotmail.com

COUNTRY FARE

CATERING SERVICES

Country Weddings, Christenings and All Family Gatherings, Corporate Lunches, Seasonal Parties & Celebration Cakes

Sally Burr 01303 863642 07814 610995
sallycountryfare@gmail.com



Filehurst Associates

Archive, Warehousing, Logistics,
Business & Household Storage.
Domestic & Commercial removals
and storage.

01303 239990 www.filehurst.co.uk

FRESHLOOK GARDENS

Regular lawn mowing service. Garden design. Hard and soft landscaping. General garden work, fencing and decking. Turfing hedge cutting, small and medium tree work. Water features, ponds and patios.

For free quotation ring Geoffrey Hogben

01303 844 680 / 07866 091633

sales@freshlookgardens.info

www.freshlookgardens.info

Established since 1990. Fully insured.



Browns

Sales & lettings
7 days a week



Over 40 years of Kent
village and country property

Elham 01303 840422 | Hawkinge 01303 892000
www.brownscountryproperty.co.uk

LYMINGE NEWSAGENTS

11-13 STATION ROAD, LYMINGE CT18 8HS
01303862566

POST OFFICE, 'OFF LICENCE'
CONVENIENCE STORE

Dry Cleaning and Laundry, can deliver Papers
OPENING HOURS

7AM TO 10PM EVERY DAY

Local Tradesman

J Tappenden

Established 36 years

Painter/Decorator/Builder

01303 862467

077755 78008



THE DRIVING INSTRUCTOR

ROGER DOWLE

ADI QUALIFIED PATIENT & PROFESSIONAL TUITION
FOR MORE INFORMATION OR TO BOOK A LESSON PLEASE
CALL ROGER

07870939936

Introductory offer, beginners only, first five HOURS £80

Jackson Plumbing Property Maintenance

Complete bathrooms and tiling
No job too small. Special rates for OAP's.

Telephone: home/evening 01303 270691
or daytime 07773 089398 or 07864 929826

M. J. Athow

BUILDER & DECORATOR, EST. 1965
GENERAL MAINTENANCE

Qualified and Insured. Free estimates
Telephone: 862616 Mobile: 07976 306665
Email: m.j.athow@live.co.uk

SIX MILE GARAGE LTD

Stone Street, Stelling Minnis, Canterbury, Kent CT4 6DN

- Car and light commercial servicing
- Class 4 and 7 mots and repairs
- Car and light commercial accident repair centre (insurance approved)
- Diagnostics bay with latest equipment
- Tyre bay with four wheel alignment and balancing
- Air conditioning servicing

Tel. 01227 709214 or 01227 709491, Fax 01227 709331

E-mail: office@sixmilegarage.co.uk

Trevor Law

Electrical Installations

Serving Elham Valley for 30 years
Part P Registered

01303 862348

07850 970087



J. V. Services

Servicing and Repairs:

- Garden Machinery
- Ride on Mowers
- Trailers & Horseboxes
- Quad Bikes
- Classic Cars

(Free collection and delivery)

Mobile Mechanic

Serve/Repair/Full Restoration:

- Compact Tractors
- Vintage Tractors
- Classic Tractors

Mobile: 078 0300 3047

john@jvserviceskent.com

THE COUNTRY FENCING COMPANY

All fencing work undertaken. We supply and fit many types of timber fencing for domestic and commercial premises. We can provide panels, gates, trellis and concrete materials, and also make products to your specific requirements. Please visit our website for further details, and call or text now for a free no obligation estimate.

Website :- www.thecountryfencingcompany.co.uk Tel :- 07519 590941

New local fencing company
launching 1st October 2015.



DILTON MINI SKIP HIRE

Ballast, Hardcore, Sand
and Topsoil Supplied
REGISTERED WASTE CARRIER
01303 812448 or 07799 433754

'Helping you enjoy your garden'

CRT Gardening

Knowledge of general gardening, including lawn care, hedge trimming and cutting, vegetable garden work, fencing installations and repairs, small and medium size tree work and ongoing maintenance of all of them.

Heavy-duty work is also undertaken.
Free estimates; fully insured. Karl Dodd 07967442518
Email: karl.dodd@live.co.uk www.crtgardening.com

AIR LINK CARS

(You pack up, we pick up)

Airport, Seaport & Long Distance Travel Specialists.
The Family Run Business where service really counts
Estate cars and People Carriers



Fixed price 24hrs a day. No extras.
Written Confirmation of booking.
For the Easy Airport Link, Think AIR LINK!

01303 862704 - 07753 760897

WILL WOODBRIDGE

Carpenter/small works builder
With years of experience

01303 863062



Laing Bennett

PHILIP A CHAPMAN

With our excellent local knowledge, service
and two local offices we will get you moving

The Estate Office 8 Station Road Lyminge Kent CT18 8HP
T 01303 863393 E lyminge@laingbennett.co.uk
134 High Street Hythe Kent CT21 5LB
T 01303 264846 E hythe@laingbennett.co.uk

www.laingbennett.co.uk

Picture Framing

All types of framing undertaken, including
tapestries, cross stitch, medals & badges etc.

Can collect and deliver.

01303 863449



Claire's Country Kitchen

Join us and enjoy some of our delicious home-baked items.
Breakfasts, Light Lunches, and Snacks with a selection of
Teas or Coffees.

Open Tuesday – Saturday, 7.30am - 4.00pm
Canterbury Road, Lyminge, Kent CT18 8HU

01303 864222

SCRUBBERS - Est. 1988

THE HOME AND COMMERCIAL CLEANERS

One off, regular or moving day 'Blitz'

Oven cleaning – Ironing

Carpet cleaning and more...

For a friendly and reliable service

Free Estimates

Tel: 01303487019 or 07834128671

Dennis Huntley

Installer of wood and multi-fuel stoves & fireplaces
Heating engineer, solid fuel servicing and chimney sweep

01303 862343

07850 784365



R. B. BUILDING SERVICES

General Maintenance, Painting, Carpentry,
Plumbing, Upvc Fascias and Guttering.

Fully Insured

For a free quote please ring Roy Bowling on
Home Tel: 01303 863267 – Mobile 07947 132319



CEDAR HOME MAINTENANCE

Building Alterations
Kitchen Installations
Painting & Decorating
Plumbing
Plastering

Damp Proofing
Drainage
Carpentry
Re-pointing
Patio's

Windows & Doors
Gutters & Down Pipes
Fascia's & Soffits
Glazing
Electrical

Roofing
Fencing & Gates
Property Clearance

All Work carried out by Qualified Tradesmen (Fully insured – all areas of Kent covered)

Call Dominic: 07968197613 Office: 01303 230787

cedarhm@hotmail.co.uk and www.cedarhomemaintenance.co.uk

Environment Agency Registered (Reg/472477) Established Since 1986

HOLDEN PLASTERING

All aspects of Plastering
Smooth-over Artex - a speciality.
Coving, Tiling and Plumbing

Phone JAMES for free estimate or advice on:
01303 770449 07773 262970

Coul-Pups Pet Care Service Fully insured, qualified and experienced member of National Association of Registered Pet Sitters (NARPS). Dog walking, 1 to 1 dog training or in class environment in association with Elham Dog Training Club. Dog grooming, cat and small pet care and house/pet sitting.

Visit: <http://coul-pups.vpweb.co.uk/> Email: coulpups@gmail.com Phone: 01303 255176 or 07542 727326

Elham Dog Training Club Lyn Fagg 01303 862820