

# THE LYMINGE NEWSLETTER

For the communities of LYMINGE, ETCHINGHILL, RHODES MINNIS and POSTLING

<http://www.lyminge.org.uk/>

**March 2016**

Produced by  
**THE LYMINGE ASSOCIATION**

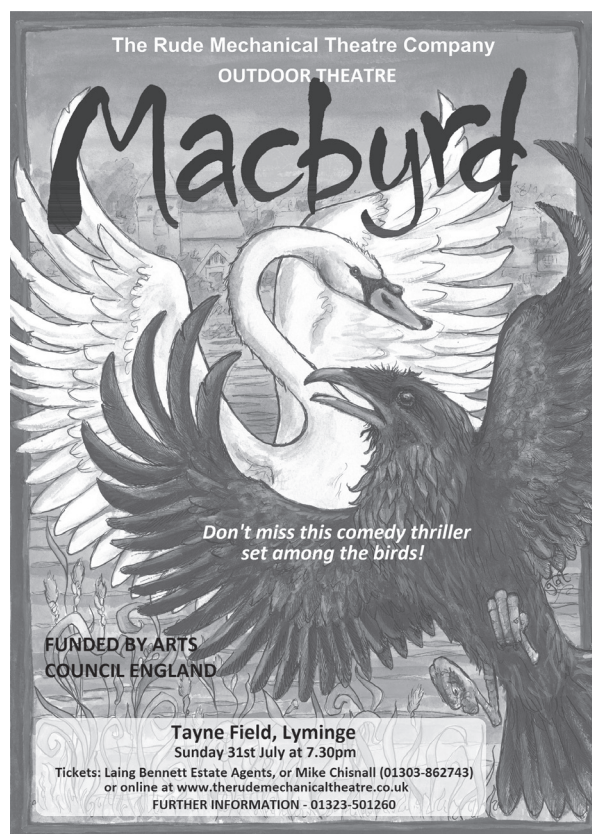
## News from The Lyminge Association

- Have you got your wellies lined up for **THE STREAM CLEAN** on **19th March??** See you there!!
- Have you started to sort your garages and sheds ready for the **GARAGE SAFARI** on **16 April??**  
Contact: Sylvia Norris 863537

Happy  
Easter



- Has your group/organisation considered being part of the Lyminge **FUN DAY** on **16 July??**  
Contact: Peter Barnes 863737



## OUTDOOR THEATRE THIS SUMMER

Those of you who are fans of The Rude Mechanical Theatre Co will be pleased to hear that they will be returning to Lyminge this summer. It will be a brand new play called 'Macbyrd', and is a comedy thriller - and sixteen of the characters are birds! Don't miss Inspector Seed, a pigeon, as the detective!

It is set in 1940 and is about the changes to a small village in rural Sussex brought about by the threat of invasion and its impact on relationships. Pete Talbot, the writer and director, says, "There are, it has to be admitted, a few echoes of a certain Shakespeare play. Macbyrd is told by the 'gypsy magpies' that his time has come, that 'sleek birds, black against the sky' will rule. In fact change to the village is because a momentous event is going to happen - and I'm not going to tell you what!" The comedy is partly in the absurdity of the birds' world, but also in the ways of 'country folk'. So there's a bit of Foyle's War about it and a bit of 'The Archers' - plus quite a bit of The Rudes, too.

*Details regarding time, date and purchase of tickets can be found at the bottom of P5 of the newsletter.*



## LYMINGE PARISH CHURCH SERVICES & ACTIVITIES

Church Website: [www.lymingechurch.co.uk](http://www.lymingechurch.co.uk)

E-mail: [office@lymingechurch.co.uk](mailto:office@lymingechurch.co.uk)

Wed 2<sup>nd</sup> March 7.00pm Holy Communion (*short said*)  
7.30pm Lent Course

### Mothering Sunday 6<sup>th</sup> March

8.00am Holy Communion (*said*)  
11.00am WOW (Ways of Worship)

Wed 9<sup>th</sup> March No Holy Communion  
7.30pm Lent Course

Sun 13<sup>th</sup> March 8.00am Holy Communion (*said*)  
11.00am Sung Eucharist

Wed 16<sup>th</sup> March 7.00pm Holy Communion (*short said*)  
7.30pm Lent Course

Fri 18<sup>th</sup> March 1.30pm MU Wave of Prayer

### Palm Sunday 20<sup>th</sup> March

11.00am Family Communion with the  
reading of the Passion  
6.00pm Evensong

### Holy Week 21<sup>st</sup> to 26<sup>th</sup> March

Monday 7.30pm 'I Believe in Easter' DVD (60mins)  
*Discover the origins of Easter*

Tuesday 7.30pm Stations of the Cross

Wednesday 7.30pm Agape Meal (*please book for this*)

Maundy Thurs 7.30pm Eucharist of the Last Supper  
with washing of feet  
*following this the church will remain  
open for a 'Watch' until 9.00pm for  
those who wish to remain for silent  
prayer and meditation*

Good Friday 12 noon the church will be open for  
'Silent Prayer and Meditation'  
before the Cross until 3.00pm

### Easter Day – Sunday 27<sup>th</sup> March

11.00am Family Holy Communion

Wed 30<sup>th</sup> March NO Holy Communion (*short said*)  
NO Open House Bible Study

### ACTIVITIES THIS MONTH

#### Coffee Morning in Wentworth Close Lounge

Friday 4<sup>th</sup> March from 10.00am to 11.30am

In the lounge at Wentworth Close (entrance via the car park)

Please contact Lynne on 863010 or Laraine on 863216

#### Mothers Union

Wednesday 9<sup>th</sup> March 10.30am

Outing for coffee at the Rectory, Stelling Minnis

Please contact Sue on 862221 for details

#### Prayer Shawl Knitting Group

Wednesday 16<sup>th</sup> March from 2.30pm at 26 Nailbourne Court

*This group meets to pray and knit shawls for  
those suffering from ill health or bereavement*

Please contact Madelaine 863582 if you are interested in joining

#### Ethelburga Luncheon Club

Thursday 17<sup>th</sup> March meeting at 12.00 noon at the Coach and Horses

Please contact Lynne 863010 if you are interested and/or need transport

## PADDLESWORTH PARISH CHURCH SERVICES

Sun 6<sup>th</sup> March NO SERVICE

Sun 13<sup>th</sup> March 9.30am Holy Communion

Sun 20<sup>th</sup> March NO SERVICES

Sun 27<sup>th</sup> March 6.00am Early morning watch:  
*New fire and lighting of the new  
Paschal Candle followed by the  
1<sup>st</sup> Holy Communion of Easter*

## LYMINGE METHODIST CHURCH

Visitors are very welcome to join us at our weekly service  
at **11am** and invited to share fellowship afterwards with a  
cup of coffee/tea.

**6th March** - Mr Richard Blackwell (Mothering Sunday)

**13th March** - 9.30am Valley Service at Elham

**20th March** - Rev. Kevin Taylor (incl. Holy Communion)

**27th March** - Easter Day - Mr Ian Couchman

**3rd April** - Local arrangement

## RHODES MINNIS CHURCH

This small Chapel in beautiful countryside holds a weekly  
Sunday Service normally at 9.30am followed by coffee  
and biscuits. A warm welcome is extended to any visitors.

**6 March** - Rev. Robin Blount

**13 March** - NO service at Rhodes Minnis but a Valley  
service at Elham Methodist at 9.30am

**20 March** - Rev. Sam Funnell (inc. Holy Communion)

**27 March** - Easter Day - Mr. Ian Couchman

**3 April** - Local Arrangement

## POSTLING CHURCH SERVICES

**6 March** - 3.30pm Evensong

**13 March** - 9.30am Family Service

**20 March** - 8.00am Holy Communion

**Friday 25 March** - 12 noon. An hour in front of the  
Cross

**27 March - Easter Day** 9.30am Family Communion

## CHRISTIANS IN LYMINGE

### Lent Lunches

Come and join us in the Rigden Room at the Tayne  
Centre for a lunch of soup, bread, cheese and fruit all  
for £3. The lunches will be held every Friday in Lent from  
19th February to 18th March starting at 12 noon.

**All profits will go to Water Aid**

## Lyminge Newsletter

### Terms & Conditions. Copy deadline is 18th March

Please email your copy in to the editor ([pb@pbarnes20.plus.com](mailto:pb@pbarnes20.plus.com)). Your payment must be received before your  
article or advert can appear in the Newsletter. Please  
leave your payment along with your name, organisation,  
telephone number and copy of your ad in a sealed envelope  
at the Lyminge Post Office or at the Lyminge Library.  
Business adverts cost £9.50 per month or £95.00 per  
year. Personal and charity adverts and articles from £3 per  
month, or £30.00 per year. The annual rate offers 12 entries  
for the price of 10. Please make cheques payable to '**The  
Lyminge Association**'. If you do not have email, a typed  
paper-copy can be left with the payment.

Lyminge Association accepts no liability for the accuracy  
of the advertisements or subsequent actions arising in  
conjunction with advertisers in the newsletter.

**Further details from Peter (editor) on 01303 863737**

### **News from Age UK Lyminge...**

Everyone is welcome at Age UK – come for a browse in the shop, a snack in the café (both open on Saturdays as well as during the week) or take part in one of our many interesting activities. There's always good company and a chance for a chat. Pop in and say hello or ring us on 01303 269602 and tell us what takes your fancy.

We'd like to thank all our wonderful volunteers for their sterling work (new volunteers are always welcome). And a special thanks to those people who came to the meeting about setting up a Friends group to help with fundraising events. We've had some great ideas put forward – and we look forward to telling you more about them very soon! Please call the Centre or email [mfo@ageukhl.org.uk](mailto:mfo@ageukhl.org.uk) if you would like to join the Friends.

On **Sunday 12th June** we are hosting a special party to celebrate the Queen's 90th birthday. There will be a buffet lunch with entertainment in the Tayne Centre and all are welcome. It's a free event for our regular centre users and £3 for visitors. All places **MUST** be booked – please contact Matthew (01303 269602). We'd appreciate any help anyone can give us with transport.

Don't forget, among our many other activities Lyminge centre holds a Communion service at 11am on the first Thursday of every month.

For more information about any of our events or services please call 01303 269602 or email [co@ageukhl.org.uk](mailto:co@ageukhl.org.uk) or come and say hello in person – we are at Everist Court, Station Rd, Lyminge, CT18 8HQ. Full information available at [www.ageuk.org.uk/hytheandlyminge](http://www.ageuk.org.uk/hytheandlyminge) (including daily menus for the next two weeks – see Services: Meal Services) and you can find us on Facebook (AgeUkHytheandLyminge) and Twitter (@ageukhl)

## **From your local PCSO (Police Community Support Officer), Dave Garland....**

The main issues over this period have been thefts from vehicles both vans were mainly tools have been taken and from cars parked at recreation areas i.e. forestry car park. I have had two incidents in the West Wood area, both incidents have been the theft of personal items left in the vehicle such as phones and handbags, etc.

Please follow the this link for vehicle security advice <http://bit.ly/1kHRob3>

In addition to the security link, I thought it would be useful to highlight additional opportunities to enable parishioners to contribute to crime reduction and safer neighbourhoods.

### **CrimeStoppers**

Formed in 1988, **Crimestoppers** started because many people feared retribution if they were to come forward to the police with information about crimes. By helping to break the wall of silence, more criminals can be brought to justice and more crimes can be prevented. The charity's promise of anonymity has never been broken. If you have information you'd like to pass on, perhaps something you've seen or heard, all you have to do is call 0800 555 111 or report it via <https://crimestoppers-uk.org/>

### **Neighbourhood Watch**

**NhW** is a way in which communities help themselves to stay safe. Groups of local volunteers work in partnership with the police and the local council to distribute advice on security and safety, help to make sure elderly or vulnerable residents aren't targets for criminals, gather information to help police tackle local problems and alert residents when there is a particular crime problem in the area.

### **Country Eye**

Is a partnership between the rural community, Kent Police and Neighbourhood Watch. The aim is to help reduce crime and the fear of crime by involving the community and protecting those who are most vulnerable.

Please follow link <http://bit.ly/1RTiwX7>

I also thought it pertinent to add some non-Kent Police web sites that may be of assistance in reporting relevant issues, these are sites for the Shepway District Council Report it once initiative

- ❖ Lorry parking ban comes into force <http://bit.ly/1QNNpap>
- ❖ Noisy Neighbour Complaint <http://bit.ly/1QoAzFn>
- ❖ Abandoned Vehicle <http://www.shepway.gov.uk/report-a-problem/abandoned-car>
- ❖ Dead Animal Report [http://www.shepway.gov.uk/article/1699/Search?q=dead+animals&go=.](http://www.shepway.gov.uk/article/1699/Search?q=dead+animals&go=)
- ❖ Flytipping Report [http://www.shepway.gov.uk/article/1699/Search?q=flytipping&go=.](http://www.shepway.gov.uk/article/1699/Search?q=flytipping&go=)

### **PCSO 53864 D W Garland, Shepway Rural Officer**

Telephone: Police non emergency 101, or email: [53864@kent.pnn.police.uk](mailto:53864@kent.pnn.police.uk), or Twitter [@kentpoliceshep](https://twitter.com/kentpoliceshep)



## District Councillors Report - March 2016

February is when all the organisations that are funded through your council tax must set their budgets. Council tax is a 'precept' and bodies that can raise tax are 'precepting authorities' and for Lyminge this includes your Parish Council, Kent Police, Kent Fire and Rescue Service, the District Council and the County Council. Shepway District Council plays a special role as it is the body responsible for calculating and collecting what each individual household must pay which is why Shepway's name is on the council tax bill even though the Shepway element of the bill is less than 15% of the total.

The government has made it clear that it wants to change the balance of how local services are funded with more being raised locally and less through central grants which would be phased out by 2020. In January when the grants for local government for 16/17 and the three subsequent years were announced the reduction was both greater and quicker than anybody had expected. For 2016/17 the grant to Shepway District Council is reduced by £1,089,000 (17.4%) which was £400,000 more than we had in our plans.

In the short term we are able to cope but we face some real challenges ahead. We propose raising the Shepway share of council tax by 1.99% (this is below the 2% level that the Government regards as excessive and which would have to be agreed by a referendum). 1.99% will raise approximately £200,000 extra income and the rest of the gap must be met through reduced costs and increased income (you will recall from last month that Shepway has recently purchased land to create an alternative income stream).

What does this mean for your council tax bill? For a Band D household in 2016/17 the Shepway precept will rise by £4.80 to £246.02 a year (less than £5 a week) for services which include your household waste and recycling collections.

We always try to take part in local events and attended Lyminge Parish council on 25 January and the Etchinghill Farmer's Market on 06 February and at least one of us will be at the 'Clean for the Queen' litter-pick on 5 March and the stream clean on 19 March.

There's just space to allow a mention of our ward plan which was published on the Shepway website on 15 February. After consultation with the parish councils in our area we agreed that 'Improving the Appearance of the District' as a theme we could all support. We now hope to be able to fund some improvements to village entrances and public open spaces and the entrance to Lyminge (Folkestone side) will be one of our first projects. If you go to you can see the Ward Profile which gives detailed information and statistics relating to the area. This is a 'working document' and updates or corrections are welcomed from our local residents.

**Susan Carey and Jenny Hollingsbee - your ward councillors for North Downs West, Shepway District Council**  
Jenny Hollingsbee (Jenny.hollingsbee@shepway.gov.uk 07887918458) Susan Carey (susan.carey@shepway.gov.uk 01303 670561)

Can you give some time to help others? Nationwide, the Citizens Advice Bureau has over 21,500 highly trained volunteers helping people with advice on how to tackle their debts, their rights as employees, as consumers, as witnesses in court and how to deal with the benefit and tax credit system. The Folkestone branch (of which Councillor Jenny Hollingsbee is a trustee) is about to move to new premises and is looking for more volunteers. Do contact Jenny if you can spare time for this worthwhile role.



### Lyminge Friends

In February we heard about **30 years as a Hovercraft Pilot** from Capt Brian Laverick-Smith. He is a very entertaining speaker and we all found the talk very interesting.

In **March**, we are looking forward to a return visit from Alan Haines on **Wed 2nd** with his talk entitled **A Swipe at the Seventies** and on the **28th**, we will meet for our regular **Easter Monday Lunch** in the Coach & Horses. On **6th April** we are looking forward to **Something Different** and on **20th** we are off to the **Walpole Bay Hotel** for a lovely **Cream Tea**.

**Meeting are 10.30 - 12.30 in the Rigden Room of the Tayne Centre.** Entry is currently £2.00 and includes refreshments. We are a friendly social group and welcome new members so just drop into one of our meetings, or, if you'd like to talk to one of us first, please call 863500.

### Rhodes Minnis Evening Circle

Our speaker in February was Alice Mills who gave us an insight into '**Living in Spain**'. Alice told us of her experiences when she and her husband went to live there for 2 years. It was nothing like "**A Place in the Sun**", and although the people were very friendly there were problems with the language and local bureaucracy. They integrated well however, and Alice gave talks at a local hotel and also volunteered to teach English at the international school.

On the 16th March John and Jane Buss will be giving us a talk on **Jane Austen**.

We meet at Rhodes Minnis Village Hall at 7.30pm and visitors will be made very welcome. For further details please contact Diana Bennett (862134).



## **Lyminge Gardeners' Society**



### **SPRING SHOW**

**Saturday 2nd April  
The Tayne Centre**

Open to view from 2pm, prize giving 4pm

**A free afternoon for all the family**

Over 40 classes including, flowers, veg, craft, poetry, cookery, photography and child only

**Teas, homemade cakes & raffle**

Schedules & entry forms available from

Lyminge Post Office & Age UK Lyminge

**Staging of exhibits 8.30am-10am,  
help available**

More information from Veronica on 01303 862264

## **SPRING FLOWER SHOW**

**Saturday 16th April**

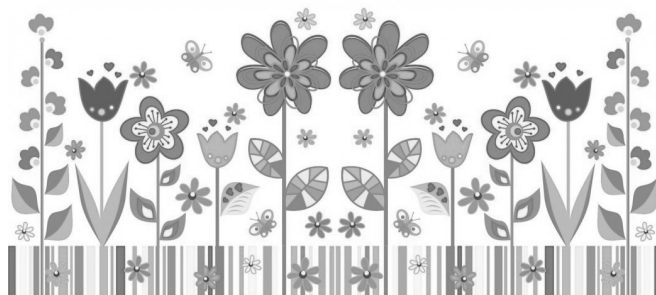
**Rhodes Minnis Village Hall**

Entries on the day between 9am and 10.30am

Show starts at 2.30pm

Schedules available from Lyminge Library  
or Janet Fry (Show Secretary) 01303863177

Refreshment and Raffle available



### **ETCHINGHILL RESIDENTS' ASSOCIATION**

Volunteers needed for the Litter Pick to be held on Saturday 5th March, starting at 10.00am at the Village Hall. This will coincide with the "Clean for the Queen" weekend.

The **Etchinghill Cinema Club** is showing the film "EVEREST" (12) on Monday, 21st March, at Etchinghill Village Hall. Doors open at 7.00 for 7.30 pm start. Starring Emily Watson, Keira Knightley and Jake Gyllenhaal, this action/drama is based on real events of the morning of 10th May 1996, when climbers from two expeditions started their final ascent towards the summit of Mount Everest, the highest point on earth. Everyone is welcome at this friendly, relaxed community event, so why not come along. Membership is free (you may join on the night) and the entrance fee of £5.00 includes admission, refreshments and a lucky draw ticket. Film shows take place every third Monday of the month. For further information, please contact Lorraine on 01303 863333

### **ETCHINGHILL VILLAGE HALL**

**OPEN HOUSE** held every Monday between 10.00 and 12.00 am. Come and join us for good company, refreshments and plenty of activities. There is no speaker this month but we will be having lunch together on Monday 21st March. Please contact Edna on 863394 for further details.

**Etchinghill Village Market** is held on the first Saturday of the month, starting at 10.00 am. Plenty of stalls with goods to buy and refreshments available. Congratulations to local residents, Judy and Ray Dixon, who won the raffle.

Your support is needed for local resident, Keith Sutton, who is walking on hot embers (ouch!), in aid of the Pilgrims Hospice on Friday 4th March at the Holiday Extra's building at Newingreen. The event takes place from 8.00 pm onwards. Do get there just before to secure a good view. Come along and support him or to give a donation, either log on to <https://www.justgiving.com/Keith-Sutton2> or contact <http://www.pilgrimshospices.org/firewalk.hythe/>

**QUIZ** organised by the Guides at Etchinghill Village Hall on Saturday 19th March from 6.00 pm. To book a table please contact Ann 07964 295218

If you would like to publicise your event in the village, please contact Barbara on 862873 or [barbara.newing@hotmail.co.uk](mailto:barbara.newing@hotmail.co.uk)

If you wish to include anything in the Etchinghill Update please contact Barbara on 862873

### ***Etchinghill Update March 2016***

### **Continued from Front Page..... OUTDOOR THEATRE THIS SUMMER - Macbyrd**

The show is on **Sunday 31st July** outdoors on Tayne Field, and starts at 7.30pm. Bring picnics and your own low backed chairs from 6.00pm. Don't forget to dress up warm; even on warm summer days it can drop down cold. Tickets will be available from **Laing Bennett**, or **Mike Chisnall** (01303-862723) and online at **[www.therudemechanicaltheatre.co.uk](http://www.therudemechanicaltheatre.co.uk)**.

Further information from the company on 01323-501260. Adults £15, Seniors £14, Students £12, Children £8, Families £38. For the special large group rate (10 or more people come together for £13 each) contact the Central Box Office on 01323-501260 or [therudes@btinternet.com](mailto:therudes@btinternet.com)

# theWI

## INSPIRING WOMEN

Members were welcomed to a social afternoon by Barbara Syrett, President. Birthday posies were presented to Alison Jelly and Barbara Syrett.

Margaret Boulter reported on a meeting she had attended regarding the future of the Royal Victoria Hospital at Folkestone. This is of great interest to us all and it is hoped there will be improvements and better facilities there. A beetle drive followed which was great fun and enjoyed by all. The winning table was Doreen Brown, Marilyn Norton, Rosemary Piddock and Jacqui Storey. The winners of the competition for a valentine object were 1st Sylvia Clark, 2nd Mary Hickmott and 3rd Janet Hooles. Tea was then served by the hostesses, Rosemary Piddock and Jacqui Storey.

The next meeting will be held on Tuesday, March 15 at 2.30pm in the village hall when Eileen Jennings will speak about sailing down the Orinoco river.

If you would like to come along as a visitor, you will be most welcome, or if you require further information, please contact Barbara Syrett on 01303 265229 or Rita Warner on 863503

## Rhodes Minnis Village Hall

### Beetle Drive

**Friday 25<sup>th</sup> March**



at the Hall 7.30pm  
Adults £2 – Children 50p  
Teas, coffee and juice provided  
There will also be a raffle  
Come and join the family fun  
New players welcome to come and join

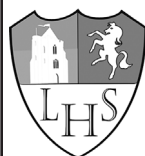
## ETCHINGHILL RESIDENTS' ASSOCIATION

### Etchinghill Cinema Club

#### FILM SHOW

"EVEREST" 12  
Monday, 21st March  
Etchinghill Village Hall at 7.15 pm  
Entrance Fee £5 per head  
includes Membership  
FREE Refreshments and Raffle

Lorraine 863333 for info



## Lyminge Historical Society

The next talk will be on Tuesday 5th April at 7.30pm in the Tayne Centre

### Medicine and Medical Treatment in WW1 Speaker: Dr. Doug Thorogood

New members and visitors are welcome.  
Members: £10 per annum inclusive of talks  
Visitors: £4 per person payable on the door.  
Tea and biscuits will be served.

**Please note: Lyminge: a History Pt 1-7 books**  
The special offer has been extended for the next few months.  
You can get the bundle of all 7 books for just £30!!\*  
To take advantage of the offer please call 01303 862865  
This offer is not available from the shops.  
\*Postage and packaging extra for postal deliveries

**Lyminge Historical Society**  
**Mobile Tel. No. 07759 260816**  
**Website: www.lymingehistoricalsociety.co.uk**

## Race Night



**Saturday**  
**9 April 7pm**  
**Elham Village Hall**

Tickets £6 to include Food  
There will be a Bar and Raffle

**Booking is essential so please telephone**  
**01303 840822 to reserve a table;**  
**individuals welcome.**

## Lyminge Bridge Club

*New Members Welcome*



Come and play a friendly game of Bridge every Monday from 10.00-12.00 at Lyminge Bowls Club. We play Rubber and Chicago Bridge (not Duplicate) in a pleasant, social atmosphere.

If you have never played and would like to try then we can help you get started.

£1 a week includes tea, coffee and biscuits and there is a very small annual affiliation fee to the Bowls Club.

Just turn up on any Monday or for further information please contact Janet Fry on 01303 863177 or janet@rhodesminnis.org.uk

## Lyminge Weather Statistics – January 2016

With thanks to Mr D. Godden for these weather statistics and notes.

	Temperature (°C)	Air Pressure (hPa)	Wind Speed (mph)	Total Monthly Rainfall
Maximum	9.8 (26/01/16)	1023 (21/01/16)	35.0 S (09/01/16)	252.1mm (9.97 in)
Minimum	-3.1 (19/01/16)	979 (10/01/16)	Highest Daily Rainfall	32.20mm (1.26in) (04/01/16)

Mild month overall, with some days of strong winds. Fewer than usual frosts. High humidity recorded.

### ***Bishops, Archbishops & Priests***

An illustrated talk  
on the religious men  
who help to tell the story of  
St. Ethelburga and her  
family



### ***Celebrating St. Ethelburga's Day***

*10.30am*

*Saturday 2nd April*

*at*

**St. Mary & St. Ethelburga Church, Lyminge**

£3 including tea/coffee & biscuits

## **TABLE TOP FAIR**

**TABLE  
TOP  
FAIR**

**RHODES MINNIS VILLAGE HALL**

**SATURDAY**

**30TH APRIL 2016**

**10AM-2PM**

**(STALL HOLDERS FROM 9AM)**

**TABLES AT £5**

**(PAYABLE IN ADVANCE)**

**TO BOOK, CALL 01303 863660**

**REFRESHMENTS AVAILABLE**

## **Coach & Horses**



### **Senior Citizens 2 course lunches available**

Monday - Saturday £7.50

**Friday Food Theme Nights Hot Buffet £9.95pp**

### **Sunday Carvery - £9.95**

Served between 12 noon and 4pm

### **Mothering Sunday - Sunday 6 March**

**Carvery 12noon to 4pm**

2 courses £13.95

3 courses £16.95

Free dessert for the Mothers of the table

**Ladies and Gents Pie Offer - 7th-10th March to  
coincide with British Pie Week.**

**Live Music!** Saturday 19th March: The Elbeats from  
8.30pm.

**Easter festivities - 25th to 28th March**

**Bookings and Contact: 01303 862694**

## **Park House Sanctuary Boarding Kennels & Cattery**

Park House, Stelling Minnis CT4 6AN

Brick-Built Heated Kennels ~ Daily Walks

Reasonable Rates ~ All dogs must be fully inoculated

Heated Cat Chalets ~ Quiet Area Inspection Invited.

To book or for further information, call

01303 862622 or email [lord.whisky@btinternet.com](mailto:lord.whisky@btinternet.com)

[www.lordwhisky.co.uk](http://www.lordwhisky.co.uk)

## **THE ETCHINGHILL VILLAGE MARKET**

**Saturday 5th March**

Plenty of free parking

**Fruit - Vegetables**

**Local Reared Pork - Local Jams - Pickles**

**Home Made Pies - Cakes**

Or Just Enjoy A Bacon Roll.

All Here In Etchinghill Village Hall

We Look Forward To Seeing You.

**Saturday 5th March from 10am**

**For further details contact John on 863819. Charity No. 302736**



# Lyminge Fun Day 16th July 2016

To Celebrate  
The Queen's 90th Birthday  
in Tayne Field

**Enquiries Tel:  
862699/863737**



## PIANO LESSONS FOR ADULTS



Have you always wanted to learn to play the piano but have lacked the opportunity, or faith in your own ability? Did you learn as a child and now regret having given it up? I specialise in teaching adults and have developed a method which will enable you to progress quickly and with great enjoyment.

**Please contact: Lise Cribbin, Bridge 01227 637709**



## JUMBLE SALE Saturday 5th March 2016

1pm - 4pm

**Elham Village Hall**  
Canterbury Road, ELHAM. CT4 6SX  
Refreshments available: Tombola

All proceeds to:  
**HEADWAY EAST KENT-Head Injury Support**

Registered Charity No. 1103215

For more information please contact:

**Zoe: 01303 863830/07985952179**

**Ann: 01303 621971**

"Carry out a random act of kindness, with no expectation of reward, safe in the knowledge that one day someone might do the same for you."

**Diana, Princess of Wales**

**HAPPY  
MOTHER'S  
DAY!**

## Especially for Mother's Day

Essential Beauty are offering an aromatherapy facial with a relaxing neck, shoulder and scalp massage. Beautifully presented gift voucher to give to your Mum (£35).

Please call **Janene** on **01303 840052**

Essential Beauty, The Limes, Elham

Please look at our Facebook page for full list of treatments



## Adult Swimming with Hythe Aqua

- Can you swim lengths (25m)?
- Are you between 17yrs and 70yrs++++
- Do want to improve your swimming skills?
- Do you want to improve your fitness?

We can help you improve under the direction of our experienced Swimming Coaches. You may want to simply improve your swimming skills and fitness, or even take part in competitions such as Masters Swimming, Triathlons or Open Water – we can help. Two sessions available each week, starting session Fridays at 8.00pm – Hythe Pool.

To book your place phone: 01303 862353 or checkout our website: [www.hytheaqua.org.uk](http://www.hytheaqua.org.uk)

## For Sale Mixed Seasoned Logs

**Large truckload NOW £80**

**Free delivery**

**Tree surgery/stump removal  
also undertaken.**

**Call 01227 709562**

## MUSIC ON A FRIDAY

wishes to thank all who entertained us so well at our *Valentines Musical Special* 12th February – thanks must also go to our team of volunteer helpers who help make the evening go so well.

Next **Music on a Friday**  
will be 20th May at the Parish Church and will be aimed at choral groups.





## Lyminge Dramatic Society

**QUARTET** allows you to join us for an entertaining evening in a retirement home for opera singers. This play promises to be both amusing and poignant. What changes will come with the arrival of a new resident?

Rehearsals are well on the way (see photo) and tickets go on sale at Laing Bennett in Lyminge - telephone 01303 863393 - from the middle of March. The performances start at 7.45pm at Lyminge Village Hall from 6th April to the 9th inclusive. Ticket prices have not yet been agreed at the time of writing: more details next month.

If you would like to join the Lyminge Dramatic Society please contact Liz on 01303 862748 and visit our website: [lymingedramaticsociety.co.uk](http://lymingedramaticsociety.co.uk) to find out more about our society.



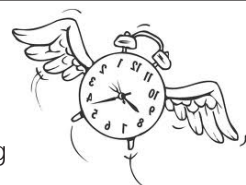
## THE PRIVATE PA for your business & home

☐ Only pay for the time you need ☐ No job too large or too small

Business & Personal Administration \* Diary Management \* Meetings/ Minutes \* Travel \* Running Errands \* Events/Parties/Activities \* Organising Services \* Personal Shopping \* Gift Buying \* Holidays \* Home Checks \* Reservations \* Research \* CVs/Cover Letters \* Proof Reading

Call: 01303 863692 or Email: [theprivatepa@yahoo.com](mailto:theprivatepa@yahoo.com)

and let The Private PA assists you in achieving a simpler business and home life



## SATURDAY MARKET



**SATURDAY 19TH MARCH**

TAYNE CENTRE  
CHURCH RD LYMINGE

**9am - 12 noon**

Preserves, Jewellery, Cakes, Crafts,....

.....and much, much more

Bacon or Sausage-in-a-Roll, Teas and Coffee

**PHONE 01303 862710 FOR ENQUIRIES**



## THE TAYNE CENTRE



To celebrate the end of the renovation project, you are invited to join us:

**'Renovation Celebration'**

**16th April 2016**

from 3.00 to 5.00pm

## BUZZLINES APRIL HOLIDAYS

DATE	TOUR	DAYS	PRICE FROM
SUN 10 APR	OXFORD & ADAM HENSON'S FARM	2	£130pp
FRI 15 APRIL	VOICES OF SPRING - WALES	4	£345pp
MON 18 APR	WARNERS HOLME LACY	5	£399pp
THU 28 APR	CHESHIRE'S RIVERS, HOUSES & GARDENS OF DISTINCTION	5	£429pp

CALL 01303 362870  
[BUZZLINESTRAVEL.CO.UK](http://BUZZLINESTRAVEL.CO.UK)

**buzzlines**  
*in the discovery lane...*



**24th APRIL 2016**

Local Lyminge runners are hoping to raise money for two individual charities of their choice:

**Jayne Ellender - PILGRIMS HOSPICE (East Kent)**

**Rob Immelman - HOSPICE, UK**

If anyone would like to make a donation to help either charity please go to - [www.justgiving.com](http://www.justgiving.com) and then enter the runners name according to charity.

Any London Marathon runners wanting to join in on our Saturday runs, please feel free to contact Jayne on 07887921389.



The Elham Valley Line Trust and Countryside Centre will open on 19th March for the season. It will then be open every weekend and Bank Holiday until late November.

Various special events will be held throughout the year starting with -

**Easter Bunny Hunt 25th - 28th March**  
**National Drive It Day 24th April**  
**Military Event 14th - 15th May**

Check the website -

<http://www.elhamvalleylinetrust.org/>

and facebook -

[www.facebook.com/ElhamValleyLineTrust.Official](http://www.facebook.com/ElhamValleyLineTrust.Official)  
 for the latest news.

## In aid of the LORD WHISKY SANCTUARY FUND

(Registered Charity 283483)

Park House Animal Sanctuary

Stelling Minnis CT4 6AN. 01303 862622

[www.lordwhisky.co.uk](http://www.lordwhisky.co.uk)

### Visit the Lord Whisky Tea Rooms

at Rhodes Minnis CT4 6XY

Open daily from 10am - 4pm.

Also open Friday evenings 6pm-9pm

Beautiful, peaceful setting and friendly staff

### Mothering Sunday Lunch Sunday 6th March

£16.95pp. Call 01303 862349 to book

### Boot & Spring Fayre

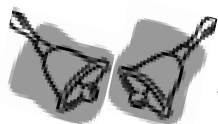
Saturday 7th May at Park House

Boots from 8am - Entertainment from 12noon

Hythe Town Concert Band ~ Sheep Shearing

Meet Lucy our Donkey ~ Tombolas, Raffles & much more!

Hot & Cold Refreshments



## Lyminge Handbell Ringers

The Lyminge Hand Bell group continue to introduce new music and so look forward to the opportunity of playing these new pieces locally. So please consider booking us for your special celebration. You can come and hear us play before booking if you wish and select your own choice of music. We have an increasingly wide selection to choose from. All we need at the venue is a large table for our bells and music, room for up to 12 players and a minimum donation of £40 for our charity, the Nepali Children's Trust. Weekends and evenings only please and plenty of advance notice is helpful.

For further information or to make a booking, please contact: Ro Edmond on 863201 or email [welldorm@aol.com](mailto:welldorm@aol.com)

## Cantores

Musical Director: Adrian Bawtree

# COFFEE CONCERT

## Methodist Church Lyminge

Saturday 12 March

11.00 - 12.00 noon

Refreshments from 10.15 in the Tayne Centre

### Programme of European Sacred Music

TICKETS £5.00

From Laing Bennett Estate Agents, Lyminge, or at the door.

Supporting JESSIE'S FUND

[www.cantoresdominicae.co.uk](http://www.cantoresdominicae.co.uk) reg. charity no. 1087409

## Looking for homecare services?

Our experienced Care Assistants are on hand to offer support to the elderly, people with a learning or physical disability or other care needs for home services no matter your needs -

- ✓ One call a day to multiple calls
- ✓ Short term or long term packages
- ✓ Home from hospital assistance
- ✓ General assistance or complex care
- ✓ Weekday, weekends, days, night call times



Contact your  
local branch today

01303

250200

[www.nurseplusuk.com](http://www.nurseplusuk.com)



Direct Payments Accepted

Editor: [pb@pbarnes20.plus.com](mailto:pb@pbarnes20.plus.com)

## New Season's Hay

Traditional small bales

Best quality - barn stored £3.50 each

FREE local delivery for 10+ bales

Call Richard: 01303 840733 or 07970 804466

Grimsacre Farm, Elham

[www.grimsacrefarm.co.uk](http://www.grimsacrefarm.co.uk)



## BINGO AFTERNOON

Saturday 12 March

1.45pm for 2pm start

Lyminge Bowls Clubhouse

Woodland Road CT18 8EW

Cash Prizes, Raffle  
and Refreshments

All over 18's welcome

Enquiries Tel: 01303 862467



## Lyminge Gardeners' Society



Presents our first event of the season

### 'HARDY GERANIUMS'



**A talk by Jacqueline Aviolet**

**Tuesday 15th March, 7.30pm**

The Tayne Centre, Church Road, Lyminge

Members £2, non-members £4

Plants will be sold by the speaker

Teas, homemade cakes & raffle

More information from Veronica on 01303 862264

## Rhodes Minnis Cat Sanctuary

### Quiz Night

12th March

Etchinghill Village Hall

7pm start

**Admission £10 per person\***



Supper of: Hearty Winter Vegetable and Pasta soup,  
served with warm crusty rolls, followed by vanilla  
cheesecake. There will also be a raffle.

Tables of 6 to 8 people preferred.

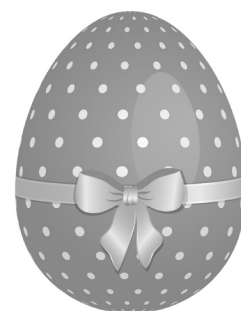
Seathwaite, Green Lane, Rhodes Minnis CT4 6XU

Call the Sanctuary on 01303 862243 or  
email: [rminniscats@gmail.com](mailto:rminniscats@gmail.com) for tickets.

*\*All proceeds go directly to the homeless cats.*

ELHAM VALLEY AND WYE LIONS CLUB

## WIN A GIANT EASTER EGG!!



Shortly coming to a pub near you will be a chance to  
win a big Easter Egg in our annual raffle!

This is to raise funds for our own charity fund.  
Thanks to the local pubs for helping. We recently  
made a donation to the Lions' national disaster fund  
which has been helping with flood relief in the north  
of England, through the local Lions clubs there who  
can quickly make an effective difference on the  
ground.

If you want to know anything us, about please call  
us on 0845 601 5212.

Music, quiz, music bingo, raffle and lots more...

## GAMES NIGHT!

**Friday 15th April 7.30pm**

**Lyminge Village Hall**

Tickets £5 per person from Laing Bennett

or [lymingevillagehall.org.uk](http://lymingevillagehall.org.uk)

Bring your own food and drink and get to know  
other people and groups in the village

Prizes for best Fancy Dress

*All proceeds go to fund refurbishments of your Village Hall*

Please don't forget -

## Stream Clean

19 March - 10am

Nailbourne - Well Field

and

## Garage Safari

16 April



## Etchinghill

### Baby & Toddler Group

We are a friendly toddler group, which caters for babies and children from 0 to school age. Crafts, messy play, trikes, toys and a singing session are included each week. In dry weather there is also outside access for the children to play.

We meet on Wednesdays between 10am -12noon at Etchinghill Village Hall. We charge £2 per family, 1st session is free. Tea/coffee and healthy snacks are provided.

If you have any queries please contact

**Julia Tesoro 07809705309**

### Lyminge Baby and Toddler Group

We'd love you to bring your little ones along to our informal and friendly group for lots of fun. Come along and join us for craft, singing and lots more. We meet every Tuesday morning at the Tayne Centre 10.00-12.00, term time only. Cost: £2.00 per session, inc. refreshments for all.

Call: Any enquiries – Jenny 0756 4130569

Sarah 0798 4939220.

E-mail: [lymingetoddlergroup@yahoo.co.uk](mailto:lymingetoddlergroup@yahoo.co.uk)

### Rhodes Minnis Toddler Group

We are back on Thursday 7th January 2016, 10am -12 noon

Hope to see our regular members as well as welcoming Mums, Dads, Grandparents and Child Carers.

We charge £1.50 per morning – to include mid-morning refreshments.

For more information phone **Elaine** on **01303 863096**



### Sign to Nursery Rhyme Classes

Etchinghill Village Hall on Tuesday mornings

Come and learn to sign with your baby. Signs are taught using nursery rhymes, action songs and musical instruments.

Spaces are limited so to book your place and for more information please call

**07800 737936** or go to

**[www.daisychaincourses.co.uk](http://www.daisychaincourses.co.uk)**



**Daisychain  
Courses**

### FOLKESTONE DISTRICT NATIONAL DANCE GROUP

Meets on Tuesdays 7.30 – 9.30 pm from late September to mid-June at

**Newington Village Hall, Newington, Folkestone**

to learn and enjoy folk dances from many different countries. No experience or partner necessary.

Tel: **01303 249199** or **01227 709557**



### Lyminge Pre-School



**'OUTSTANDING' – in every category  
Ofsted Feb 2011**

**We are now open between 8am and 6pm  
ALL YEAR ROUND**

We are a well established pre-school with committed, enthusiastic and highly qualified staff passionate about providing the highest standards of childcare.

To arrange to meet the team, please call:

**01303 863149** (day) or **07709420736** (eve) or email [lymingepreschool@gmail.com](mailto:lymingepreschool@gmail.com) and visit our website

[www.lymingepreschool.org.uk](http://www.lymingepreschool.org.uk)

### SHEPWAY LIFELINE

*HELPING PEOPLE TO LIVE INDEPENDENTLY IN THEIR  
OWN HOME FOR LONGER*

The service they are renowned for is the red button pendant that is worn around the neck or wrist. In an emergency, when it is pressed, it calls for emergency assistance. The Lifeline really is a life saving service and is highly valued within the community. By enabling people to live in their own homes for as long as possible, it avoids the need for expensive residential and nursing home care.

Shepway Lifeline is Telecare Services Association accredited and has an innovative 24/7 monitoring centre, supplying all facets of Telecare alarms, including care and security solutions for vulnerable individuals, lone workers and local businesses.

To contact Shepway Lifeline: -

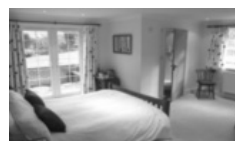
**Phone:** (01303) 242615 or 242971

**Address:** Shepway Lifeline, Civic Centre, Castle Hill  
Avenue, Folkestone, CT20 2QY

**Email:** [lifeline.proactive@shepway.gov.uk](mailto:lifeline.proactive@shepway.gov.uk)

**Website:** [www.shepway.gov.uk/lifeline](http://www.shepway.gov.uk/lifeline)

### Bridge Cottage Bed & Breakfast 4 Stars Silver Award



**Luxury accommodation in a tranquil setting  
Chris & Alison, Shuttlesfield Lane, Ottinge  
01303 862933**

**[www.bridgecottagesimplybandb.co.uk](http://www.bridgecottagesimplybandb.co.uk)**

### Shuttlesfield Barn – 4 Star Gold – Self Catering

Rural location. Two bedrooms, ensuite bathroom and wetroom. Disabled facilities. Short and longer stays.



Families, dogs, horses welcome. Located on walking, cycling, riding routes. Heated outdoor pool in summer.



Info@shuttlesfieldbarn.co.uk Tel: 01303862729

[www.shuttlesfieldbarn.co.uk](http://www.shuttlesfieldbarn.co.uk) CT18 8LB

**for buses from Lyminge Post Office to  
Folkestone Town Centre via Etchinghill & Cheriton High Street**

**MONDAYS TO SATURDAYS except Bank Holidays**

There are route 17 buses at 0705 (not Saturdays), 0749, 0909, 0939 (not Saturdays), 1004, 1034, 1104, 1204, 1304, 1404, 1514, 1614 (1619 on schooldays), 1629 (schooldays only), 1654 (schooldays only), 1719, 1749, 1834, 1929, 2113 and 2313.

There are also route 18 buses to Sandling Station & Hythe - for times see our website or call the number below.

**SUNDAYS & BANK HOLIDAYS**

There are route 17 buses at 0947, 1147, 1347, 1547, 1802 and 2002.

**for buses from Lyminge (opposite Aberdeen House) to  
Canterbury City Centre via Elham, Barham & Bridge**

**MONDAYS TO SATURDAYS except Bank Holidays**

There are route 17 buses at 0727 (schooldays only), 0732, 0752, 0903, 0938, 1028, 1128, 1228, 1328, 1443, 1613, 1703, 1803, 2001 and 2201.

There are also route 18 buses to Canterbury via Stelling Minnis and Bossingham - for times see our website or call the number below.

**SUNDAYS & BANK HOLIDAYS**

There are route 17 buses at 0827, 1027, 1227, 1427, 1642 and 1842.

These times will operate from 4 January 2016.



timetable information **0871 200 22 33**  
Calls cost 12p per minute plus your phone company's access charge  
**www.stagecoachbus.com**

## TAYNE CENTRE HALL HIRE

Previously known as the Lyminge Methodist Church Hall

### Clayson Hall

1 October to 31 May (including heating) £9.00 per hour :  
£32.00 per 4 hour session : £64.00 full day

1 June to 30 September

£6.50 per hour : £23.00 per 4 hour session : £46.00 full day

**Rigden Room (Parlour) with heating, if required\***

£6.50 per hour all year (\*electric - over heaters).

**Burren Room with heating, if required\***

£5.00 per hour all year, (\*electric - over heaters)

### Overnight Stays

1 June to 30 September £40; 1 October to 31 May £55

For any enquiries please call **07971 722 401**



## YOUR LYMINGE VILLAGE HALL

Reg. Charity: 28145

The Hall has 2 meeting rooms and a large hall; great for everything from dances, fun quiz nights and theatrical events.

Hire includes access to a fully equipped kitchen, serving hatches and bar (Licence available), all with easy car parking.

**NEW dedicated booking line on 0749 7625 741**

where Kate Kellett or Pippa Hamilton will be delighted to discuss your individual requirements.

Examples of prices for the main hall are: Friday or Saturday evening £65.00, weekday evenings £20.00 and all day on Saturday £135.00

**lymingevillagehall.org.uk**  
**lymingevillagehall@outlook.com**



Find us on Facebook  
Lyminge Village Hall



Follow us on Twitter  
@Lymingevhall

## ETCHINGHILL VILLAGE HALL HIRE FEES

The next time you are thinking of holding a function you should try Etchinghill Village Hall, which holds the highest Hallmark accreditation level, with its excellent facilities, including ample parking space.

The standard hire charge for the main hall and kitchen are:

Weekdays £10.00 per hour

Saturdays £12.00 per hour

Sundays £12.00 per hour

During the winter months (1 November to 31 March) a Winter Supplement of £1.00 per hour is added to the above rates.

Special rates apply for weddings and all day events with a range of discounts on the above rates applying to all lettings of more than three continuous hours and additional discounts are available to Etchinghill Residents and Regular Hirers.

The use of a separate Committee Room is also available.

For all bookings or enquiries please contact:

**Sylvia Williams on 01303 863547**

## Rhodes Minnis Village Hall

Charity No.800345

Rhodes Minnis Village Hall is located 2kms (1¼miles) from Lyminge and just off Longage Hill and Whitehorse Lane in Chapel Lane

The hall, which holds Hallmark accreditation, is ideal for children's parties, band practice, quizzes, meetings and fundraising events and has the capacity to take parties of up to 100. The rates include the use of the kitchen.

### Rates

Mon to Fri £15 per session £40 all day

Sat & Sun £20 per session

£30 for evening session and £60 all day

### Sessions

AM session 08.30 - 12.30

PM session 13.30 - 17.30

Evening session 18.00 - 23.45

There are special rates for regular users.

For all bookings and enquires please contact:

**Martin Fry 01303 863177 or 07849217793 or e-mail:  
book @rmvh.org.uk**

## Sibton Park Cricket Club

We extend an invitation to our local residents, please join us on match days and selected evenings and take advantage of the Club's outstanding venue, facilities and fully licensed bar.

Having a Celebration? Require a regular venue?

The club house and grounds are available

**For further information or to make a booking**

**please contact: Andy & Clare Allon**

**07817 751262 - aallon44@yahoo.co.uk**



This page is printed to give readers and organisers the opportunity of planning events without clashing with existing ones, which are already in the 'diary'. It is not intended as a means of advertising and we take no responsibility for errors or omissions. Acceptance is at the discretion of the editor. Please send your updates by email to [pb@pbarnes20.plus.com](mailto:pb@pbarnes20.plus.com) or via methods outlined on Page 2. Location and name codes follow:

**C&H:** Coach & Horses; **ECC:** Etchinghill Cricket Club; **EVH:** Etchinghill Village Hall; **ERA:** Etchinghill Residents' Association; **ES:** Elham Square; **JC:** Jubilee Centre; **JF:** Jubilee Field; **LB:** Laing Bennett; **LBC:** Bowls Club; **LL:** Library; **LMC:** Lyminge Methodist Church; **LPC:** Lyminge Parish Church; **LSH:** Lyminge School Hall; **LVH:** Lyminge Village Hall; **LW:** Lord Whisky; **NVH:** Newington Village Hall; **PC:** Postling Church; **PH:** Lord Whisky, Park Hse. **PVH:** Postling Village Hall; **RVH:** Rhodes Minnis Village Hall; **RMC:** Rhodes Minnis Church; **SNL:** See News Letter for info; **TC:** Tayne Centre.

One Off or Irregular Events									
Date	Time	Event	Where	Tel. No.	Date	Time	Event	Where	Tel. No.
12 March	11am	Cantores Coffee Concert	LMC	07813071867	30 April	10am	Table Top Sale	RMVH	863660
12 March	1.45pm	Bingo	LBC	862467	7 May		Boot Fair	ECC	07896717787
19 March	10am	Stream Clean	TC	862015	20 May	7.30pm	Music on friday	LPC	
2 April	10.30am	St. Ethelburga Talk	LPC	862073	21 May		Boot Fair	ECC	07896717787
2 April	2pm	Lyminge Gardeners' Spring Show	TC	862264	4 June		Boot Fair	ECC	07896717787
6-9 April	7.30pm	Quartet	LVH	863393	12 June ??	TBC	Queen's Birthday Party	EVH	
9 April		Boot Fair	ECC	07896717787	18 June		Boot Fair	ECC	07896717787
9 April	7pm	Race Night	Elham VH	840822	2 July	7pm	Cantores Prom Concert	LVH	07813071867
16 April	9am	Garage Safari		863537	16 July	11am	Fun Day	TF	863737
16 April	2.30pm	RM Spring Flower Show	RMVH	863177	24 November	5pm	Christmas Lights Switch On	LB	863737
16 April	3pm	Renovation Celebration	TC		16 December	7.30pm	C antores Christmas Concert	Sibton Park	07813071867

Weekly Events									
Day	Time	Event	Where	Tel. No.	Day	Time	Event	Where	Tel. No.
Mon	10am	Open House	EVH	863394	Wed	11.45am	Pilates	TC	07825109670
Mon	10am	Bridge Club	BC	863177	Wed	6pm	Karate for Juniors	EVH	07554004526
Mon	10.30am	Lyminge Larks (Singing)	TC	01233750223	Wed	7pm	French Conversation	KH	862972
Mon	11am	Cookery	JC	269602	Wed	7.30pm	Cantores Choir	LSH	07813071867
Mon	2pm	Computer Buddy (need to book)	LL	862180	Wed	8pm	Scottish Country Dancing	EVH	862761
Mon	2.30pm	Monday Fellowship	TC	862164	Thur	9.30am	Baby Rhyme Time	LL	862180
Mon	5.45pm	Lyminge Youth Drama Group	TC	862602	Thur	10am	RM Toddlers Group	RVH	863096
Mon	6.30pm	Judo Club	LVH	862946	Thur	10am	Art Group - Morning	TC	211364
Tues <sup>1</sup>	10am	Baby & Toddler Group	TC	863274	Thur	11am	Shopping trips to Supermarket	JC	269602
Tues	10am	Sign to Nursery Rhyme Classes	EVH	07800737936	Thur	2pm	Art Group - Afternoon	TC	862972
Tues	10.30am	Art Class	JC	269602	Thur	6pm	Ballroom and Salsa Dancing	EVH	07967979610
Tues	11.15am	Chairotics	JC	269602	Thur	6.45pm	Short Mat Bowls	LVH	863842
Tues	6pm	Football Training	JF	07967342226	Fri	10am	Talk Time	LL	862180
Tues	6.45pm	Short Mat Bowls	LVH	863842	Fri	11am	Seated Exercise	JC	269602
Wed	10.15am	Mature Movers (Exercise)	TC	862873	Fri	5pm	Hawkinge Flyers (Lyminge Branch)	Katrina	07881457994

Monthly Events									
When	Time	Event	Where	Tel. No.	When	Time	Event	Where	Tel. No.
3 <sup>rd</sup> Mon	7.30pm	Etchinghill Cinema	EVH	863333	3 <sup>rd</sup> Wed	7.30pm	RM Evening Circle	RVH	862913
Last Mon		Parish Council Meeting	SNL	239500	Last Wed	11am	Singing For Health	JC	862364
1 <sup>st</sup> Tues	10.30am	Reading Group	LL	862180	Last Wed	7.30pm	Quiz Night	C&H	862694
1 <sup>st</sup> Tues	11am	Reminiscence	JC	269602	4 <sup>th</sup> Fri	7.30pm	Beetle Drive	RVH	862616
1 <sup>st</sup> Tues <sup>2</sup>	7.30pm	LHS Talk/Event	TC	862972	Last Fri	1.30pm	Team Quiz	JC	269602
3 <sup>rd</sup> Tues	9.45am	Family History	LL	862180	1 <sup>st</sup> Sat	10am	Village Market	EVH	863819
3 <sup>rd</sup> Tues	2.30pm	Etchinghill W.I.	EVH	863503	2 <sup>nd</sup> Sat	10am	Postling Ch. Coffee Morning	PC	863536
3 <sup>rd</sup> Tues <sup>3</sup>	7.30pm	Gardening Society	TC	862264	3 <sup>rd</sup> Sat	8am	Saturday Market	TC	862164
1 <sup>st</sup> Wed	10.30am	Lyminge Friends	LMP	862598	Last Sat	11am	Poetry Group	LL	862180
2 <sup>nd</sup> Wed	10.30am	Mothers Union	NP	862221	1 <sup>st</sup> Thurs	7.30pm	British Legion, Elham Branch	Age, UK	862779

<sup>1</sup> In term time only <sup>2</sup> Except Jan, Feb, July and August <sup>3</sup> Except Jan, Feb, Aug <sup>4</sup> Except Aug and Dec

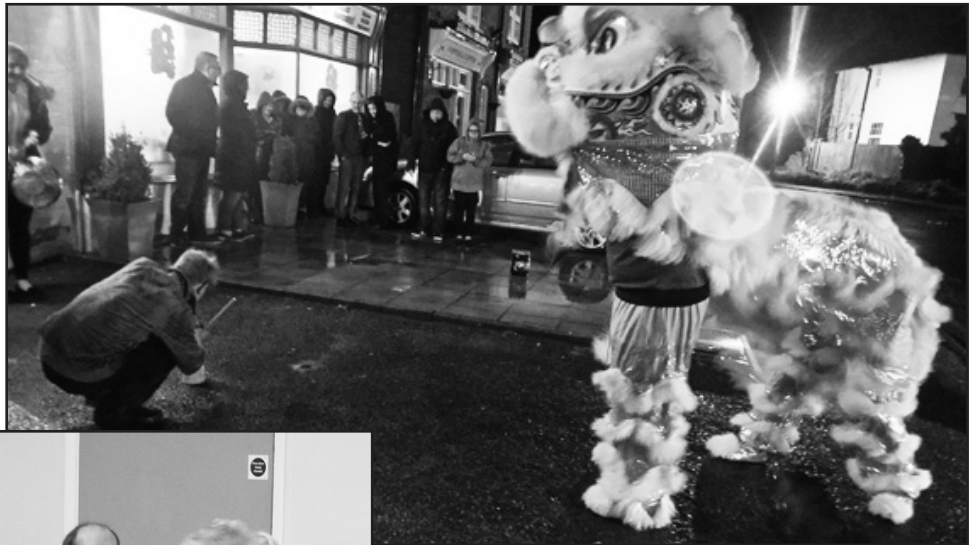


# Out and About

*Do you have any photos of local events or local groups in action, please call 01303 862699. Give your group a FREE plug !*

**The Chinese New Year** being celebrated outside China China in Lyminge on Monday 8th February. This year being the Year of the Monkey. ➡

Lighting the fireworks appeared to be much harder than frying the rice !



◀ A fund raising event took place on Saturday 20th February at the Etchinghill Village Hall to support the "Alongside Africa" children's charity. Pictured is the winning team, taking part under the name of 'Tony's African Queens'

**Ethelburga Quilters** with the heart shaped cushions they made for breast cancer patients. In all 100 cushions were sent to local hospitals ➡



## Mystery Photo

Last month's picture was the entrance to the lower part of St Ethelburga's Well.

Try this one.



## CLEAN FOR THE QUEEN

*The Lyminge Association and the Parish Council have already set aside the 19th March for a spruce up of Well Field and the Nailbourne near St Ethelburga's Well and would encourage everyone to ensure that 'their' patch of the villages is spruced up as well during March.*



## DILTON MINI SKIP HIRE

Ballast, Hardcore, Sand  
and Topsoil Supplied  
REGISTERED WASTE CARRIER  
**01303 812448 or 07799 433754**

*'Helping you enjoy your garden'*

## CRT Gardening

Knowledge of general gardening, including lawn care,  
hedge trimming and cutting, vegetable garden work, fencing  
installations and repairs, small and medium size tree work and  
ongoing maintenance of all of them.  
Heavy-duty work is also undertaken.  
Free estimates; fully insured. Karl Dodd 07967442518  
Email: karl.dodd@live.co.uk www.crtgardening.com

## AIR LINK CARS

(You pack up, we pick up)

Airport, Seaport & Long Distance Travel Specialists.  
The Family Run Business where service really counts  
Estate cars and People Carriers



Fixed price 24hrs a day. No extras.  
Written Confirmation of booking.  
For the Easy Airport Link, Think AIR LINK!

**01303 862704 - 07753 760897**

## WILL WOODBRIDGE

Carpenter/small works builder  
With years of experience

**01303 863062**



## Laing Bennett

INDEPENDENT ESTATE & LETTING AGENTS

With our excellent local knowledge, service  
and two local offices we will get you moving

The Estate Office 8 Station Road Lyminge Kent CT18 8HP  
T 01303 863393 E lyminge@laingbennett.co.uk  
134 High Street Hythe Kent CT21 5LB  
T 01303 264846 E hythe@laingbennett.co.uk

[www.laingbennett.co.uk](http://www.laingbennett.co.uk)

## ALWAYS STRUGGLED WITH WEIGHT-LOSS

Then ring me in confidence to discuss a solution

## HYPHE HYPNOTHERAPY

*'Helping to get you back in control'*  
**07773797438**



## Claire's Country Kitchen

Join us and enjoy some of our delicious home-baked items.  
Breakfasts, Light Lunches, and Snacks with a selection of  
Teas or Coffees.

Open Tuesday – Saturday, 7.30am - 4.00pm  
Canterbury Road, Lyminge, Kent CT18 8HU

**01303 864222**

## SCRUBBERS - Est. 1988

THE HOME AND COMMERCIAL CLEANERS

One off, regular or moving day 'Blitz'

Oven cleaning – Ironing

Carpet cleaning and more...

For a friendly and reliable service

Free Estimates

**Tel: 01303487019 or 07834128671**

## Dennis Huntley

Installer of wood and multi-fuel stoves & fireplaces  
Heating engineer, solid fuel servicing and chimney sweep

**01303 862343**

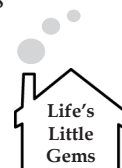
**07850 784365**



## Life's Little Gems Ltd

*Professional Domestic Cleaning*

- Busy, friendly reliable family service
- Frequent and one-off cleans
- Cleaners also needed, good rates of pay, own car essential



Email: [Lifelittlegems@gmail.com](mailto:Lifelittlegems@gmail.com)

Phone: 07860 658090

Cleaning and Decluttering Service



## CEDAR HOME MAINTENANCE

Building Alterations  
Kitchen Installations  
Painting & Decorating  
Plumbing  
Plastering

Damp Proofing  
Drainage  
Carpentry  
Re-pointing  
Patio

Windows & Doors  
Gutters & Down Pipes  
Fascia's & Soffits  
Glazing  
Electrical

Roofing  
Fencing & Gates  
Property Clearance  
All Work carried out by Qualified Tradesmen (Fully insured – all areas of Kent covered)

Call Dominic: 07968197613 Office: 01303 230787

[cedarhm@hotmail.co.uk](mailto:cedarhm@hotmail.co.uk) and [www.cedarhomemaintenance.co.uk](http://www.cedarhomemaintenance.co.uk)

Environment Agency Registered (Reg/472477) Established Since 1986

## HOLDEN PLASTERING

All aspects of Plastering  
Smooth-over Artex - a speciality.  
Coving, Tiling and Plumbing

Phone JAMES for free estimate or advice on:

**01303 770449**

**07773 262970**

**Coul-Pups Pet Care Service** Fully insured, qualified and experienced member of National Association of  
Registered Pet Sitters (NARPS). Dog walking, 1 to 1 dog training or in class environment in association with Elham Dog  
Training Club. Dog grooming, cat and small pet care and house/pet sitting.

Visit: <http://coul-pups.vpweb.co.uk/> Email: [coulpups@gmail.com](mailto:coulpups@gmail.com) Phone: 01303 255176 or 07542 727326

**Elham Dog Training Club** Lyn Fagg 01303 862820

## D.M.B. Plastering

All aspects undertaken  
Interior. Exterior. Plastering. Rendering.  
Coving. Ceilings Wall. Floors  
Finest quality assured. CSCS Certified.  
26 years experience.  
Free estimates. Reliable service. Fully insured.  
Call David on 07818 607209

## P Davis + Co

General Builders and Roofing Specialist  
All work undertaken  
Call for free estimate

**Tel: 01303 863049 or 0784 6769643**

## Personal Computing

For straightforward I.T. advice, solutions  
and training

Contact: **Steve Ashman**  
**862869**  
**sra@ashman-consulting.co.uk**



## CARE FOR YOUR FEET

**IAN COX MSSCh MBChA CHIROPODIST**  
**at AGE UK HYTHE AND LYMINGE**

Treatments include toenail cutting, corns, hard skin, fungus and more  
Prices from £12.00

For further information and to book an appointment  
'phone 01303 269602



## Wilco Plumbing & Heating

Central Heating Installations & Repairs  
Gas & Oil Boiler repairs & replacements  
5 Year Guarantee on Worcester Bosch Boilers.  
Local Experienced Engineer, Emergency plumbing 24/7 call out  
Registered with the Institute of Plumbing  
Gas Safe Registered-OFTEC Registered  
**01303 862173 07860 452640**  
**paul@wilcoplumbing.co.uk www.wilcoplumbing.co.uk**

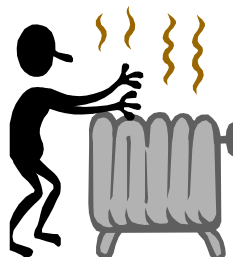
## TOBY'S TREE SURGERY

Thinning - Reducing - Maintenance - Felling  
ALL TREE WORK, BOTH PRIVATE AND COMMERCIAL,  
UNDERTAKEN BY OUR NPTC TRAINED OPERATIVES  
Professional Friendly Service

**FREE ESTIMATES - FULLY INSURED**  
**Contact Toby Griggs:**  
**07854 098 395 or (01303) 863642**

## D. SCRIVENS

PLUMBING & HEATING  
Oil Fired Boiler Installation,  
Commissioning, Service and Maintenance.  
Unvented Hot Water Systems - Solar Water Heating  
Central Heating - Water Softeners - Bathrooms - Showers - En suites  
Approved 'Aqualisa' Installer  
WATER INDUSTRY 'APPROVED PLUMBER'  
FULLY INSURED  
**07810 897076 scrivensplumbing@aol.com**



## K & M LEWSEY LTD

plumbing & heating engineers  
*established 1969*  
Registered plumber  
Gas ACOP approved engineers  
**01303 264535**  
manned office  
daytime Monday to Friday

Total garden care for all your needs

## TIM MILLETT

Grass Maintenance, General Gardening, Small & Medium  
Size Tree Work, Stump Grinding and Wood chipping  
Fencing Repairs & New Installations  
Turfing, Hard & Soft Landscaping  
Free Estimates - Fully Insured  
**01303 863676 07752 880583**  
**Email: info@tmhorticulture.co.uk**



**Respiratory**  
Rehab  
Bringing health home

Providing private community respiratory  
physiotherapy, general physiotherapy and  
rehabilitation to East Kent

**T: 07904482097**  
**E: kris@respiratoryrehab.co.uk**  
**W: www.respiratoryrehab.co.uk**

**Kris Bahadur. Chartered Physiotherapist.**  
MSc Physiotherapy, BSc (Hons), MCSP, SRP

## N.P.C.

### Domestic Appliance Services

*Service and repair of washing machines, tumble driers,  
dishwashers, cleaners and small electrical work. For a  
prompt and friendly service*

Call Neil Collard 01303 892234 or 07798716044  
or **www.npcdomesticapplianceservices.co.uk**

**Auto Economy Centre**  
**Fully equipped Mechanical Repair & Service Centre**  
**with the latest diagnostic equipment**  
**MOTs £44.95**

**01303 863656**  
**Orchard Garage, Canterbury Rd, Etchinghill**  
**www.autoeconomycentre.com**

## Old English Pine

Antique, repro pine, oak and French-style painted furniture with beautiful and reasonable priced accessories to make  
your house a home. Bespoke pine units made to order. Huge shop - over 3 floors. Open 7 days a week.

**Tel: 01303 248560 www.oldenglishpineinkent.co.uk 100/102 and 90 Sandgate High Street, Sandgate**





**Lyminge  
Country  
Bakery**

**01303 720126**

[www.lymingecountrybakery.co.uk](http://www.lymingecountrybakery.co.uk)  
[baker@lymingecountrybakery.co.uk](mailto:baker@lymingecountrybakery.co.uk)

A Selection Of Our Produce

- Traditional Loaves    • Low GI Bread    • Sweet Products
- Mini Loaves    • Artisan Bread    • Baguettes
- Specialty Loaves    • Savoury Products    • Bakery Specials



## Local Bookkeeper

Sole Trader & Small Business Accounts  
VAT, Self Assessment, Payroll, CIS  
& General Administration Services



Call or e-mail:

Tel: 01303 864229 Mob: 07702 321686

e-mail: [tash@bestbookwork.tax](mailto:tash@bestbookwork.tax)

[www.bestbookwork.co.uk](http://www.bestbookwork.co.uk)



## LYMINGE SALON

Facial Waxing : Gents Welcome : Shellac Nails  
Free WiFi : Appointments not always needed

01303 647222 : [info@snippersandclippers.co.uk](mailto:info@snippersandclippers.co.uk)  
Station Road, Lyminge, CT18 8HP

## T. Metcalfe Fencing Contractors

Approved Expert Installer for Jacksons Fencing  
Established over 30 years  
Fully insured - Highly experienced teams



Panel fencing, gates, decking, pergolas, post & rail,  
stock fencing, security, landscaping & tree surgery.

**01303 840201    07790 290 155**

[metcalfefencing@btinternet.com](mailto:metcalfefencing@btinternet.com)

Proprietor - Derek Burr,  
Ash Ridge House, Elham



## KENT & SUSSEX HOLIDAY COTTAGES

With over 250 properties in this region and an expert local team, call now to book  
your break or to talk to one of the team about letting your property for holiday rentals.

**— 01304 619 444 —**

[www.kentandsussexcottages.co.uk](http://www.kentandsussexcottages.co.uk) • [info@kentandsussexcottages.co.uk](mailto:info@kentandsussexcottages.co.uk)

12 King Street, Sandwich, Kent CT13 9BT

## Lucy's Pet Care Service

Experienced in the care and maintenance of cats,  
dogs, horses, rodents, poultry, raptors, amphibians and  
ornamental fish.



MSc Biodiversity Management,  
BSc Wildlife Conservation.

**Contact Lucy: 07921139098**  
[lucy\\_anna\\_smith@hotmail.co.uk](mailto:lucy_anna_smith@hotmail.co.uk)



## Essential Beauty

*reflexology : aromatherapy : collagen mask facials*  
*non-surgical perfector : facials :uccio gel varnish*  
*manicures & pedicures : waxing & eyelash/brow tinting*

Therapist with 20 years experience

Call Janene Moat 01303 840052

The Limes, High St, Elham.

Free eyebrow tidy for new clients.

**Mirror your needs with our advertising**  
**£9.50 per month or**  
**£95 per annum - 2 months free.**

**Please apply to The Editor**  
**([pb@pbarnes20.plus.com](mailto:pb@pbarnes20.plus.com))**  
**for further details**



## SEATHWAITE BOARDING CATTERY LTD.

Supporting Rhodes Minnis Cat Sanctuary

GREEN LANE, RHODES MINNIS, CT4 6XUTEL: 01303 862243 (Registered charity 262245)

**ONLY CATS BOARDED, IN QUIET COUNTRY LOCATION**

Individually heated chalets. Single cat £7 per day, a reduction for 2  
or more cats. All cats boarded with us must have current vaccina-  
tions against cat flu & feline enteritis. All profits from the boarding  
cattery go to support homeless cats in the Sanctuary.

**RHODES MINNIS CAT SANCTUARY**

has a wide variety of cats available to caring homes.

**Mirror your needs with our advertising**  
**£9.50 per month or**  
**£95 per annum - 2 months free.**

**Please apply to The Editor**  
**([pb@pbarnes20.plus.com](mailto:pb@pbarnes20.plus.com))**  
**for further details**



## East Kent Foot Care

Mobile Foot Health Practitioner

**Jo Shapter** BSc (Hons), MCFHP, MAFHP

Treating and managing common foot problems,  
corns, callus, verrucae, thickened nails,  
toe nail management, fungal problems,  
diabetic foot assessments etc.

**Call: 07745 532075**

Member of the British Association of Foot Health Professionals



## VICTORIA'S HAIR AND BEAUTY SALON 2 Cullings Hill, Elham, CT4 6TE

MANICURES / PEDICURES / CND SHELLAC / ST TROPEZ SPRAY TAN / FACIALS / MASSAGE / TINTING /  
HOT STONES / HAIR / PAMPER PACKAGES / WEDDING MAKE UP / GIFT VOUCHERS

01303 840 931 / [www.victoriashairandbeauty.com](http://www.victoriashairandbeauty.com)



## Ralph Allard Chimney Sweep



All chimneys, boilers and stoves swept.  
Brush and Vacuum. Certificates issued.  
HETAS and NACS registered, fully insured.

Member of National Association of Chimney Sweeps

**01303 844465 or 07813716654**

**THE CLINIC**  
Garden Suite  
Pendragon House  
4 Station Road  
Lyminge  
Kent CT18 8HP  
**01303 863359**



info@theclinic-lyminge.co.uk  
www.theclinic-lyminge.co.uk

## REGISTERED OSTEOPATHS & MEDICAL ACUPUNCTURIST

Adam Price B.Sc Hons (Ost) Katie Price B.Sc Hons (Ost)

The Clinic 01303 863359 or mob: 07980 897382

- Treatment of lower back pain, both acute and chronic
  - Treatment of tension/cervical type headaches both acute & chronic
  - Treatment of various stiff & painful arthritic conditions
  - Treatment of sports injuries, both soft tissue & skeletal
  - Deep tissue back, neck & shoulder massage for symptomatic relief
- The cost of your treatment may be recoverable from your insurers. Please check



## Sunhouse Electrical

Your local reliable Electrician

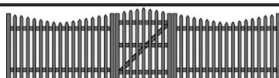
Part P Registered & Elecsa Approved

Fully Insured & On Competent Persons Register

For a free quotation & advice call James on

**01303 766333**

**www.sunhouse-electrical.com**



## GOSBEE CONSTRUCTION Fencing - Gates - Landscaping

35 years experience. Jacksons Expert Installer

Call Martin Gosbee

07974 835511 01303 863337

[martin@gosbee1.orangehome.co.uk](mailto:martin@gosbee1.orangehome.co.uk)

## Figures 4 Business LLP

Plan – Monitor – Control



Denise Roberts ACIS, ACMA

- Business plans and budgets
- Bookkeeping and payroll services
- Financial reporting & monitoring
- Qualified Company Secretary
- Qualified Management Accountant
- over 25 years experience

T: 07511 097707

E: [droberts@f4b-kent.co.uk](mailto:droberts@f4b-kent.co.uk)

W: [www.f4b-kent.co.uk](http://www.f4b-kent.co.uk)



**MANOR**  
VETERINARY CLINIC

We care for them all, great and small

Lyminge Clinic: Methodist Church Hall  
Monday, Wednesday & Friday 4-6pm

**01303 273203**

**www.manorveterinaryclinic.co.uk**

## STERRY'S

*Independent  
Funeral Director*

01303 272525  
93 Cheriton High Street  
(opp Co-op)

01303 264400  
41 High Street, Hythe  
(opp Lloyds Bank)

Always here for you; 24 hour service. Home visits on request.  
Choice of pre-paid funeral plans

## KEEP CALM AND LOSE WEIGHT NOW!



- Tasty & healthy weight loss smoothie shakes
- Velvety vanilla & cheeky chocolate flavours
- Only £1.39 per meal serving
- Sugar-free healthy children's milkshakes!
- Complete family nutrition
- 100% fruit & vegetable-based backed by research

**www.willwright.transform30.com**

Try the 30 day challenge!

Tel: **01303 863460 or 07905 031850**

## Red Dragon I.T. Ltd.



- Windows, Mac & Linux Systems
- PC Health Checks
- Wired & Wireless Networks
- Website Design
- Graphic Design

T: 01303 723456 | E: [info@rdit.co.uk](mailto:info@rdit.co.uk) | [www.rdit.co.uk](http://www.rdit.co.uk)  
2 Station Road, Lyminge, Folkestone, Kent, CT18 8HP

## LYMINGE FOOD AND WINE 01303 862225



We are here to serve you  
Mon. – Sun. 7:00am to 9:00pm  
including Bank Holidays  
National Lottery Here



## South East Aerial & Satellite Solutions

Digital – Freeview – Satellite – Aerials

Supply and fit of quality digital installations, FREEVIEW, SKY,  
aerials, poor reception and problem solving, upgrades and  
repairs by fully accredited engineers

Free quotations and advice, fixed prices, fully insured

**Freeview**

**NO CALL-OUT CHARGE**

**freesat**

**07968 659404 - 07825168010 - 01303862361**



We are open 5 days a week!! Weekdays 9am-6pm  
We are also open on weekends by appointment only.  
We can also collect your PC or Mac from you!!  
Call now on 01303 720 019

## COUNTRY FARE

### CATERING SERVICES

Country Weddings, Christenings and All Family Gatherings, Corporate Lunches, Seasonal Parties & Celebration Cakes

Sally Burr 01303 863642 07814 610995  
sallycountryfare@gmail.com

## Filehurst Associates

Tel: 01303 239990 E: info@filehurst.co.uk

Domestic & Business Removals - UK & France  
Long or Short Term Storage  
Business Document Storage  
Call now for a no obligation quote

## FRESHLOOK GARDENS

Regular lawn mowing service. Garden design. Hard and soft landscaping. General garden work, fencing and decking. Turfing hedge cutting, small and medium tree work. Water features, ponds and patios.

For free quotation ring Geoffrey Hogben  
01303 844 680 / 07866 091633

sales@freshlookgardens.info

www.freshlookgardens.info

Established since 1990. Fully insured.

## Browns

Elham 01303 840422  
Hawkinge 01303 892000

Sales  
& Lettings

Over 40 years of Kent  
village and country  
property

THE local and regional  
specialist. Why settle  
for less?

www.brownscountryproperty.co.uk

rightmove

onTheMarket.com

RICS

## LYMINGE NEWSAGENTS

11-13 STATION ROAD, LYMINGE CT18 8HS  
01303862566

POST OFFICE, 'OFF LICENCE'  
CONVENIENCE STORE

Dry Cleaning and Laundry, can deliver Papers  
OPENING HOURS

7AM TO 10PM EVERY DAY

Local Tradesman

## J Tappenden

Established 36 years

Painter/Decorator/Builder

01303 862467

077755 78008

## Alan Croucher

Caravan Engineer

Have your Caravan, Motorhome, Horsebox or Trailer serviced without the fuss of taking it to a workshop.

www.arcmobilecaravanservices.com

Mobile: 07921 480919 Home: 01303 863194

\*Non mechanical only on motorhomes and horseboxes

ARC

MOBILE CARAVAN  
SERVICES

## Jackson Plumbing Property Maintenance

Complete bathrooms and tiling  
No job too small. Special rates for OAP's.

Telephone: home/evening 01303 270691  
or daytime 07773 089398 or 07864 929826

## M. J. Athow

BUILDER & DECORATOR, EST. 1965  
GENERAL MAINTENANCE

Qualified and Insured. Free estimates

Telephone: 862616 Mobile: 07976 306665

Email: m.j.athow@live.co.uk

## SIX MILE GARAGE LTD

Stone Street, Stelling Minnis, Canterbury, Kent CT4 6DN

- Car and light commercial servicing
- Class 4 and 7 mots and repairs
- Car and light commercial accident repair centre (insurance approved)
- Diagnostics bay with latest equipment
- Tyre bay with four wheel alignment and balancing
- Air conditioning servicing

Tel. 01227 709214 or 01227 709491, Fax 01227 709331

E-mail: office@sixmilegarage.co.uk

## Trevor Law

Electrical Installations



Serving Elham Valley for 30 years  
Part P Registered

01303 862348

07850 970087

## J. V. Services

Servicing and Repairs:

- Garden Machinery
- Ride on Mowers
- Trailers & Horseboxes
- Quad Bikes
- Classic Cars

(Free collection and delivery)

## Mobile Mechanic

Serve/Repair/Full Restoration:

- Compact Tractors
- Vintage Tractors
- Classic Tractors

Mobile: 078 0300 3047

john@jvserviceskent.com

## THE COUNTRY FENCING COMPANY

Local fencing company supplying and fitting timber fencing, trellis, gates and concrete posts for homes and businesses. We are friendly and reliable so please contact us for a free quote.

Email :- info@thecountryfencingcompany.co.uk

Website :- www.thecountryfencingcompany.co.uk Tel :- 07519 590941

