



THE LYMINGE NEWSLETTER

For the communities of LYMINGE, ETCHINGHILL, RHODES MINNIS and POSTLING

December 2017

Produced by
THE LYMINGE ASSOCIATION
www.lyminge.org.uk

News from The Lyminge Association

Father Christmas to Visit Lyminge Friday 22nd December



The joy on children's faces as they receive a present from Father Christmas is something to behold and treasure.

The Lyminge Association has been fortunate again this year to gain the support of Father Christmas and his willing elves to personally deliver presents to your homes.

The **gifts for delivery must be well wrapped, CLEARLY LABELLED WITH THE RECIPIENT'S NAME AND ADDRESS** and left at **Laing Bennett's** between **1st to 20th December**.

A **small charge of £2** is made per address; there is no limit to the number of presents per household, but they **each** need to be clearly marked with the recipient's name and address.

And hey-presto, Father Christmas delivers them to each address in the early evening of **Friday 22nd December**.

Events 2018

There's never a dull moment in Lyminge and here are some dates of forthcoming events:

Musical Evening - Hythe Town Concert Band - 24th February

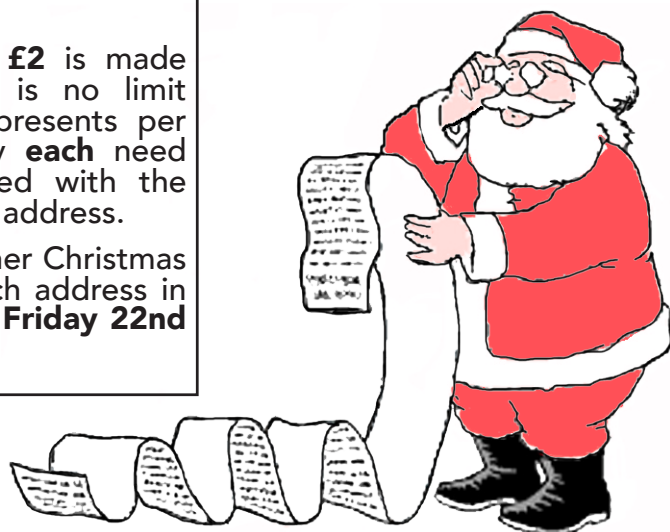
Quiz - 17th March, LVH

Stream Cleans - TBA when the stream returns to normal levels

Garage Safaris - Saturday 21st April and Sunday 16th September

Junior Dragons Den - Spring Term

Barn Dance - June/July



*Happy Christmas and a Healthy New Year
to everyone from The Lyminge Association*



LYMINGE PARISH CHURCH SERVICES & ACTIVITIES

Church Website: www.lymingechurch.co.uk

SERVICES

Sun 3 rd Dec	8.00am	Said Holy Communion
	11.00am	WOW (Ways of Worship)
Wed 6 th Dec	6.30pm	at Lyminge church - PEACE Elham Valley Group Advent talk with worship and refreshments
Sun 10 th Dec	8.00am	Said Holy Communion
	10.45am	Sung Eucharist
Wed 13 th Dec	6.30pm	at Postling Church - LOVE Elham Valley Group Advent talk with worship and refreshments
Sun 17 th Dec	11.00am	Family Communion Service with children's activity area
	6.00pm	Carol Service
Wed 20 th Dec	6.30pm	at Elham church - JOY Elham Valley Group Advent talk with worship and refreshments
Sun 24 th Dec	CHRISTMAS EVE	
	8.00am	Said Holy Communion
	3.00pm	Nativity & Crib Service
	11.30pm	Midnight Mass
Mon 25 th Dec	CHRISTMAS DAY	
	8.00am	Said Holy Communion
	11.00am	Toys & Joys
Sun 31 st Dec	10.30am	at Lyminge church Elham Valley Group Ministry Farewell Sung Eucharist Service for Peter followed by presentations, refreshments etc

ACTIVITIES THIS MONTH

Mothers Union

Wednesday 13th December at 10.30am

In the lounge at Nailbourne Court

Contact Sue Rawlings for details

PADDLESWORTH PARISH CHURCH SERVICES

Sun 3 rd Dec	6.00pm	Sung Evensong
Sun 10 th Dec	NO SERVICES	
Sun 17 th Dec	3.00pm	Blessing of Crib & Christingle
Sun 24 th Dec	11.30pm	Carol Service – beginning and ending at Cat & Custard Pot, a walk to church to prepare for Christmas Day
Sun 31 st Dec	NO SERVICES	

LYMINGE METHODIST CHURCH

Visitors are very welcome to join us at our weekly service at **11am** and invited to share fellowship afterwards with a cup of coffee/tea.

- 3rd December** - Rev. Sam Funnell / Holy Communion
10th December - 3.30pm Elham Valley Tea Service at Rhodes Minnis (NO morning service)
17th December - Mrs. Val Redding
24th December - Rev. Kevin Taylor 6pm Carols by candlelight

RHODES MINNIS CHURCH

This small Chapel in beautiful countryside holds a weekly Sunday Service normally at **9.30am** followed by coffee and biscuits. A warm welcome is extended to any visitors.

- 3 December** - Rev. Robin Blount (incl. Holy Communion)
10 December - **3.30pm Elham Valley Tea Service**
 - Rev. Kevin Taylor
14 December (Thurs) - 7pm Candlelit Carol Service
 - Rev. Kevin Taylor
17 December - Mrs. Joy Brumwell
24 December - Rev. Kevin Taylor
25 December - No service on Christmas Day
31 December - Local Arrangement

POSTLING CHURCH SERVICES

- 3rd December 9.30am** Family Service /Holy Communion
10th December No service
13th December 6.30pm Advent Meditation
17th December 8.00am Holy Communion
18th December 7.30pm Carol Service with the Shepway Singers
24th December 11.30am Crib Service
Christmas Day 9.30am Holy Communion



- 2nd December:** Haywardians Concert in the Tayne Centre 7.30pm
8th December: Music on a Friday in the Parish Church 7.30pm
16th December: Saturday Morning Market in the Tayne Centre.
17th December: Carol Services: 6pm Parish Church
24th December: Carol Service: 6pm Methodist Church
Every Monday "Knit and Natter" in the Methodist Church

We look forward to seeing at these events

Lyminge Newsletter

Terms & Conditions: Copy deadline for next edition - 18 December 2017

Please email your copy in to the editor (pb@pbarnes20.plus.com). Your payment must be received before your article or advert can appear in the Newsletter. Please leave your payment along with your name, organisation, telephone number and copy of your ad in a sealed envelope at the Lyminge Post Office or at the Lyminge Library.

Business adverts cost £9.50 per month or £95.00 per year. **Personal and charity adverts and articles** from £3 per month, or £30.00 per year. The annual rate offers 12 entries for the price of 10. Please make cheques payable to 'The Lyminge Association'. If you do not have email, a typed paper-copy may be left with the payment.

Lyminge Association accepts no liability for the accuracy of the advertisements or subsequent actions arising in conjunction with advertisers in the newsletter.

Further details from Peter Barnes (editor) on 01303 863737



BADGERS BRIDGE NURSERY

*"Bridging the indoor and outdoor learning environment
for children in their Early Years"*

The Preschool Setting

Badgers Bridge nursery offers a smaller, calm setting environment combining Montessori principles alongside the EYFS to deliver the best start for your child. Our skilled and highly qualified practitioners will care and support your child during their time and learning at Badgers Bridge. We support the ethos of outdoor learning and are out and about in the surrounding areas as much as we can.

Forest School Wednesdays

On our own forest school site we provide an outdoor day every week. Fun at Badgers Sett is learning in it's most natural form. Our Forest School is a unique way of building independence, self-esteem and a positive attitude towards learning in children and young people as they explore and experience the natural world for themselves.

Flexible sessions. Free Early Education places for 2, 3 and 4 year olds. Childcare voucher schemes accepted. Places available.

Email : badgersbridge@gmail.co.uk

Website : www.badgersbridge.co.uk

Tel : 01303 862951

Ofsted Registered : 395128

Companies House Reg : OC375571

NOTES FOR DIARY:

Christmas Present Delivery Service:
Presents for Father Christmas to
deliver on 22nd December can be
left at Laing Bennett's from
1st December



NOTES FOR DIARY:

Musical Evening
Hythe Town Concert Band
24th February 2018

China China

中國城



Open Christmas Day

Restaurant and Takeaway



12pm to 7pm



*Eat as Much as You Like
& select from over 200 dishes
£25 per person*

To book your table please call in or;
phone 01303 863 288 or 07539 200 804,
email - jackey@chinachinalyminge.co.uk

Chinese New Year



2018



Restaurant and Takeaway

Special 5 course meal

Celebrate New Year on
13th & 15th Feb.

£29 per person

**see the Lion Dance and
enjoy the
Fireworks**

♥ and on 14th Feb. ♥

Valentine's Day Special

£18.95 per person





Etchinghill Update December 2017

Merry Christmas and a Happy New Year to one and all.

ETCHINGHILL RESIDENTS ASSOCIATION – Dave McCombe 07939 076617

There will be no Cinema Club this month. Our next viewing will be on Monday 15th January.

ERA AGM – Sunday 3rd December at the Village Hall. Doors open at 7.00 for

7.30pm start. Come along and see what Etchinghill is doing or what you can do for Etchinghill.

Call Geraldine on 07544 670363 for more information.

ETCHINGHILL VILLAGE HALL - John White 863819

Open House every Monday 10.00 – 12.00noon. All welcome, refreshments available. There will be no speaker this month, and we will be having our Christmas Lunch at the Golf Course on 18th December. For further details please contact Wendy on 863495. No Open House on Monday 25th December or Monday 1st January.

Christmas Market: Saturday 16th December, 10am. Come along and find those ideal Christmas presents and treats.

SPEEDWATCH

A big thanks to all the Speedwatch volunteers who endeavour to educate irresponsible drivers using the parish roads.

THE GATEKEEPER INN

Friday 15th December 9.00 pm, live music from Rudy Warman and the Heavy Weather.

Carol singing outside the Gatekeeper Inn (weather permitting) Christmas Eve 4.00pm. Come along and get into the spirit of Christmas!

To include an entry in the Etchinghill Update please contact Barbara on 862873 or barbara.newing@hotmail.co.uk



Merry Christmas everyone.

Lyminge Friends - November 2017

In November, we had a very interesting talk on *The Work of Macmillan* and on Wednesday 15th we went to Newnham Court, Maidstone for shopping and Lunch.

On Wednesday 6th December, we have a return visit from John and Jane Buss with their talk on *The Goodwin Sands: The Great Shyppie Swallower* and this will be followed by our **Winter Lunch Party**

with Secret Santa and Raffle. Don't forget to book and pay for your place. On Sunday 31st December we end the year with our **Annual New Year's Eve Lunch in China China**.

On Wednesday 3rd January, we have a talk from Vanessa Carr entitled *The Craze for Collecting Crested China*, and this will be followed by our **January Pub Lunch** in the **Coach & Horses**. Remember to book your place.

Guests and non-members are welcome but call 862015 first as lunches must be prebooked and paid for.

Meetings are held on first Wednesdays, 10.30am - 12.30pm in the **Rigden Room of the Tayne Centre**.

Entry for 2017 is £3.00 which includes light refreshments. We are a friendly social group and welcome new members so just drop into one of our meetings, or, if you'd like to talk to one of us first, please call 863500.



**The Jubilee Centre, Everist Court
Station Road, Lyminge, CT18 8HQ
Tel: 01303 269602**

We wish you all, Clients, Volunteers and our generous local Supporters a very Happy Christmas.

News from the Jubilee Centre.....

The **Clients' Christmas Party** will be on **13th December** and will be held at the Hythe Imperial Hotel. The Charity Shop & Cafe will be closed on this day.

A Carol Service will be held in the centre on **Wednesday 20th December at 10.45am**. Everyone is welcome.

Complimentary mince pies and mulled wine will be served at this free event.

Christmas Lunches will be served in the centre on the following dates – **1st, 5th, 7th, 14th, 18th, 20th, 22nd & 30th** and will consist of a two course festive meal with wine, crackers etc. for £5.50 per person. Places are limited so please book in advance.

The **Charity Shop & Café** will be **open** on **Saturdays 2nd, 9th & 16th December**. It will not be open on Saturdays 23rd & 30th December.

Christmas opening hours - The Centre, shop & Cafe will open on 27th, 28th and 29th from 9am to 4pm only. We will be closed on 25th, 26th December and 1st January.

Remember, the **Home Meals Delivery Service** is available every day over the festive period, just call 269602 to order.

Diary Dates:

Communion Service - 11am on the first Thursday. Support and assistance with transport is available.

Come to our **Fun Bingo nights** in our Lyminge Centre on the third Friday (not December) and our Hythe Centre on Stade Street - on the first Thursday.

For more information about any of our activities, services or Christmas events (that are being added to as you read this) please call **01303 269602** and ask for Matthew or Sue or why not just pop in and see us?

BRIGHT + BEAUTIFUL BALLOONS

Balloons

For All Occasions

Local Lyminge-based balloon decorator

- Can supply a single foil balloon or a selection of helium-filled balloon bouquets to be displayed on a table, floor or walls.

Can also provide balloon modelling for all children's parties and events.

Contact: 07958 737977 or
or
01303 863460

E mail: info@thechairdresser.com

Collection or local delivery available.

'convenient, hassle free & cost effective'

NO JOB TOO SMALL!!



On behalf of the **RBL Poppy Appeal**, I would like to thank everyone in the local area for their generosity towards this year's Poppy Appeal. Although not all monies are yet in, the current total stands at £11,611.44 which is a wonderful result. In

Lyminge alone, the total figure is £2246.90

(£200 more than last year) which includes a magnificent collection from the school of £334.12.

Last year's appeal in our area over the course of the whole year raised £14,432.16, so, with another eleven accounting months ahead, we are well on our way to arriving at a similar figure this year. It never ceases to amaze me how generous everyone is and I thank you all sincerely, as your kind generosity will help to enable the RBL to continue its vital work in supporting our armed forces.

Susan Foster

Poppy Appeal Organiser, Elham Valley

Thank you.....

We would like to say how much we appreciated the thoughtful prayers and beautiful rendition of the poem 'In Flanders Fields' at the recent Remembrance Day Service.

Thank you to staff and pupils of Year 6, Lyminge Primary School.

Chris and Mary Blanch



GIFT WRAPPING SERVICE

Need help with wrapping your presents for Christmas.... or for a special occasion?

Help provided to assist and save you time.

Based in Lyminge or bring your gifts to:

Genesis unique decorative objects and gift shop

136 Sandgate Road, Folkestone CT20 2BY

Call 07958 737 977 or 01303 863 460



Lyminge Church of England Primary School

We have a **vacancy** for a **cleaner** to join our Clean Team, who do a brilliant job of keeping our school clean and looking great!

10 hours per week 3.30pm-5.30pm daily

Kent Range 2 salary (£14,865-£15,252 pro rata)

This equates to approximately £280 per month

Please contact the school office for information and an application form.

office@lyminge.kent.sch.uk or 01303 862367

Thank you ...to all those who attended the Open Day at Lollipops on Sunday 22nd October - over 100 people visited our lovely cottage and the feedback was amazing.

Lots of thanks goes to family & friends who supported us on the day and with a special thanks to The Lyminge Historical Society who came armed with details about the history of the house.

All in all, a great success, with the best part being we raised £248.07 for Macmillan Cancer Support.

Many thanks for supporting our Open Day.

Mark & Drew



BRAMPTON LODGE

BRAMPTON LODGE SOCIAL DAY

Running every Wednesday with two sessions:

- Morning 10:30am to 12:30pm
- Afternoon 3:30pm to 4:30pm

An opportunity to meet the residents & staff as well as joining in with some of the daily activities.

Coffee Mornings, Animal Therapy visits, Quiz Games and much more.

For more details call 01303 258227 and speak to one of our team.

The title of our talk in October was "*Tax Care & Toyboys*" when Norman Beauchamp gave us some excellent financial advice which we found very useful.

The competition was won by Diana Bennett, with Chris Marshall 2nd, Janet Frankson 3rd and Marliyn Norton 4th. Our members' Christmas party is being held on the 13th December (the 2nd Wednesday of the month) at 2.30pm with a Bring & Share Tea. There will be no meeting in January.

For further information contact 01303 862913.

We wish all our friends a very Happy Christmas and a healthy New Year.

District Councillors Update - December 2017

From your District Councillors

Shepway District Council is a signatory to the Armed Forces Covenant which is a promise from the nation that those who serve or have served, and their families, are treated fairly. Serving personnel, their families and veterans face a range of challenges and we in local government want to do what we can to help. Jenny has a particular responsibility for Community Engagement at Shepway District Council and on 15 November she visited the Royal British Legion Industries at Aylesford and was shown the range of housing available for service veterans of whatever age (from single occupancy to families, independent sheltered and full nursing care) as well as the facilities offered to help veterans with training, work experience and with getting into work. (More information on www.rbli.co.uk). She also attended a meeting of the South East Reserve Forces' and Cadets' Association held in Maidstone on 14 November and has been meeting members of the Royal Gurkha Rifles based at the Shorncliffe Garrison. We both attended Remembrance Services; Jenny in Stanford and Susan in Saltwood.

Building work is well advanced for the 35 new homes in Military Road, Shorncliffe. Most of them will be council homes and go to local families on the waiting list but two of the three bedroom and five of the two bedroom houses will be available next Spring for shared ownership. Shared ownership is a way to make home ownership more affordable as the buyer only needs to find a deposit and mortgage for half the cost and pays rent for the rest. For many people finding a deposit is the biggest hurdle so shared ownership is a real help in getting families on the housing ladder. If you know anyone who would be interested in this, please let us know.

You may recently have seen figures about how much land is built on in the UK (a report by the BBC and one in The Times). There's far less built up area than most of us realise. Around 85% of Kent is classified as green space with less than 2% taken up by buildings, another 3% by roads, paths and rail, nearly 6% by gardens and just over 3% by water. If you are interested in this topic then you may want to look at the papers for Kent County Council's Growth, Economic Development and Communities Cabinet Committee on 21 November which are on KCC's website along with a webcast of the meeting itself. Item 8 covers the bids in from Kent to the Government's Housing Infrastructure Fund including £281m for schools, transport and medical facilities etc. for Otterpool Garden Town.

As we write, the news has just been announced that the Government will not be defending the judicial review against its plans for a lorry park at Stanford West. At the same time the Government says that it is committed to a permanent alternative to Operation Stack 'including a lorry park' so we now face the uncertainty over where this will go. We will post news as it comes through on our twitter accounts @jennyhollingsbe and @susanjcarey

At this time of the year, it is important to acknowledge the voluntary work carried out by so many people in the Village - the Parish Council, the Parents and Friends Association and the School Governors at Lyminge Primary School, Age UK, the Tayne Centre, the Village Halls, the Youth Group, the Guides, the Scouts, the Lyminge Association, Community Speedwatch, Etchinghill Residents Association, our Churches and many more. Particular thanks to Peter Barnes and the wider team for putting together and distributing this newsletter which brings us all together. A Merry Christmas to you all.

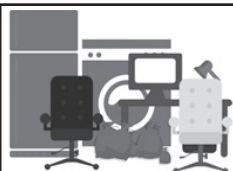
Jenny Hollingsbee (Jenny.hollingsbee@shepway.gov.uk 07887918458) Susan Carey (susan.carey@shepway.gov.uk 01303 670561) - ward councillors for North Downs West, Shepway District Council



Lyminge Dramatic Society

Our Alan Bennett evening is on on Friday 1st December and Saturday 2nd December at Lyminge Village at 7.30. Tickets are £8 from Laing Bennett, Lyminge. Bring your own food, drink, plates, glasses etc. We are performing two Talking Heads - A Chip in the Sugar and A Lady of Letters- and a short play called Say Something Happened. Come along and enjoy an entertaining, but thought provoking, evening; Alan Bennett is the past master of observing and commenting on the minutiae of life.

Many thanks to everyone who has supported us this year and Lyminge Dramatic Society would like to wish you all 'A Merry Christmas and a Happy New Year'.



House Clearance covering South East Kent.....and beyond!
CAROL CREES CLEARANCES - Est. over 30 years
Full/part house clearance. Fair prices paid. Antique/Vintage/Retro/Modern
Registered rubbish carrier
Contact **Simon Cullen** on 07745 421680 or sijnzo@aol.com



St Mary & St Ethelburga Church

Reverend Peter Ashman

is retiring at the end of the year.

*His last service will be on Sunday
31st December at 10.30am.*

*We would like to invite everyone who
would like to say their goodbyes to
come to this service which will be
followed by a farewell buffet party.*

If you would like to contribute
to a leaving present, then please contact Lynne on
863010 or email arran68@btinternet.com



Acknowledgement

A very big thank you for all your cards, letters, comfort and attending David's Church Service. Thanks also to Rev. Kevin Taylor, Sterry's Funeral Services, Coach and Horses, Methodist Church and Dean and Kim for that little bit extra!! What a wonderful village we have here!!

Jackie and Darren Hall

Going Underground Zoo Edition

It's a beast of a board game!

In this fabulous game you're a zookeeper at London Zoo. Your mission is to find your lost animals on the London Underground and get them back safely to the zoo.



The game is fully licensed by Transport for London and London Zoo and was invented locally by Nigel, Anna, Jo and Michael.

So, for a traditional family Christmas gift at a special village rate you can: Pick up a copy for £15 (Nigel and Anna at The Old Surgery, 22 Station Road), or we can even drop off a copy if you live in the area (01303 862057). Happy Christmas

Letter to Editor: I have to write to say how much I love the remembrance poppies round the village! Great idea, well done, hope this is carried on.

Claudine Williams, Station Road Lyminge



Lyminge Hand Bells

The Lyminge hand bell ringers have been playing in and around Lyminge for well over 25 years. We love to attend fetes and local private celebrations throughout the year so if you think the sound of hand bells would suit a special occasion you are planning, then please contact us. We have an increasingly wide selection of music to choose from or just leave it to us. All we require at the venue is a large table for our bells and music, room for up to 11 players and a minimum donation of £40 for our current charity, the Nepali Children's Trust. A small contribution to traveling costs is also appreciated if we have to travel more than 5 miles from Lyminge. Please provide plenty of advance notice. Want more info or make a booking?

Please call Ro Edmond on 863201 or email welldorm@aol.com

Editor: pb@pbarnes20.plus.com

Christmas starts here!

A Ceremony of Carols

Benjamin Britten

A candlelit performance by Canterbury Cantata
Alex Rider - harp and Grenville Hancox - director

**Saturday 16th December
6.00pm**

St Mary and St Eanswythe Church,
The Bayle, Folkestone

Tickets £10 including Wine and Cheese reception

Doors open at 5.30pm and guests can pay on the door.

Reservations:

Email: bayleman@gmail.com Tel: 01303 257 248

Sponsored by The Friends of St Mary & St Eanswythe's Parish Church
www.friendsofstmaryandsteanswythe.org.uk

A Big Thank You.....

.....from Michelle and Debbie

To all those who attended, donated or helped in any way at the cake sale held on 28th October at EVH in aid of Aaron Jackson.

Without your support it would not have been the great success it turned out to be.

In all, as a community we managed to raise a whopping £2,400+..... Fantastic!!

Thank you once again and watch this space for more information regarding more fundraising events for much needed funds for our local lad, Aaron Jackson.

For anyone wishing to donate please visit:

www.justgiving.com/crowdfunding/michele-jackson



**Model Mondays
are here!!**



Starting in December, you can book in on a Monday or Saturday with our trainee, Tom, for a men's haircut at a reduced price from the normal.

All Tom's haircuts will be checked by Drew, our Master Barber, before you leave the shop.

Thank you for supporting Tom in learning to become a great barber.

Snippers and Clippers - haircuts, shaves, beards and moustaches, 01303647333



Tayne Centre MARKET



Church Road, Lyminge

16th December

9am - 12 noon

Craft, Preserves, Cakes, Jewellery

Pies, Books, Veg, Bric-a-brac, ...and much more.

Christmas Is Just A Few Days Away

Phone 01303 862710

FOUND - MINUTE SECRETARY

The **Lyminge Association** is very grateful to Amanda Duckett for offering to take our minutes. We're sure she will be of a real benefit to the Association. Thank you Amanda.

In aid of the **LORD WHISKY SANCTUARY FUND**
(Registered Charity 283483)

Park House Animal Sanctuary, Stelling Minnis CT4 6AN.
Tel: 01303 862622

Join us at Park House for a very special Christmas Celebration with the Capralama Farm Reindeer on

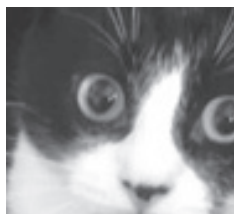
Saturday 23rd December at 2pm
Crib Scene and Carols
with Hon. Pastor Anne Oakley

Admission by donation – Mulled Wine & Mince Pies

We wish you all a very Happy Christmas and a Peaceful New Year and look forward to seeing you all again in 2018

Our first event of 2018 is our
Fur, Feather & Exotic Exhibition
on Saturday 24th February, 10am-4pm
at Boughton-under-Blean Village Hall

FLOSSY IS FOUND!



A big thank you for the kindness and support shown to us by many of the Lyminge Residents around Barton Field, Fox Close, Brady Rd and Woodland Rd. We lost our new cat on Thursday 10th November and put a lot of fliers through doors as part of our search. We've had a wonderful response and wanted to let people know that she has been found safe and sound. Thank you!

Coach & Horses




Senior Citizens 2 course lunches -

Available Monday - Saturday £7.50

Christmas Party menus - 3 courses £21.95. Available 1st-23rd December (excluding Sundays)

Quiz Night - Wednesday 27th December

New Year's Eve - 7pm 'til late. Tickets available from 1st December, must be bought in advance & not available at the door. £5 per person to include first drink. Disco 8pm.

Bookings and Contact: 01303 862694  Find us on **facebook**
For more information please check out our Facebook page and search 'Coach & Horses Lyminge'

Editor: pb@pbarnes20.plus.com



Lyminge
Historical Society
Would like to wish you all a very



Merry Christmas

December 2017: AGM and talk with **Derek Boughton**
"Deare Heart": 17th Century letter writers in Kent
Tuesday 5 December 2017

7.30pm at the Tayne Centre

Please note:

There will be the usual Winter break in January and February and the next talk will be on Tuesday 6th March 2018

7.30pm in the Tayne Centre

Photographing Archaeology in Lyminge
with **John Piddock**

New members and visitors are welcome. Members: £11 per annum inclusive of talks. Visitors: £4 per person payable on the door.

Tea and mince pies will be served.

Please note: Following the publication of Lyminge a history part 9, this can be purchased through the shops at £7.00. Plus: purchase Parts 1-5 as a bundle for £22 or Parts 1-9 for £44*

To take advantage of the offer please call 01303 862865. This bundle offer is not available from the shops.

*Postage and packaging extra for postal deliveries

Lyminge Historical Society
Mobile Tel. No. 07759 260816
Website:
www.lymingehistoricalsociety.co.uk



Back by popular demand

The Railway Swing Band

will be performing for one night only

Wednesday 6th December at

7.30pm

in Elham Village Hall.

Tickets for this event are £10

from Jan on 01303 840820 or
stanyonjan@aol.com

The
Coffee Cabin



The
Coffee Cabin

**FINE COFFEES, SPECIALITY TEAS,
BREAKFASTS, SNACKS, LIGHT LUNCHES,
SANDWICHES, HOME BAKES
OPEN TUESDAY - SATURDAY
TUESDAY SPECIAL : BEEF CHILLI £6.50**

Canterbury Road, Lyminge CT18 8HU
01303 864222

lymingecoffeecabin@hotmail.com

 Find us on **facebook**

Tel: 01303 863737

Rhodes Minnis Village Hall CHRISTMAS BEETLE DRIVE

on **Friday 8th December at 7.30pm**
Bring and share food. Teas/coffee and juice provided. There will be a raffle

Adults £2 – Children 50p

Come and get your celebrations started with an old-fashioned fun evening.

Newcomers very welcome.



pushing up daisies

Lyminge Conservation & Environmental Group

**** More Exciting News ****

This month we agreed to give a grant to the Ethelburga Well Preservation Group for their Erosion Prevention Project. We hope to tell you about another grant in February.

Do you have a project (small or large) that we may help?

Contact: Mike Foxon: 01303 862073

jam.moonraker@btinternet.com

Moonraker, High Street, Lyminge, CT18 8EN

Deadline for these applications: 31 December 2017

Our purpose:

- to regenerate, conserve and sustain the natural environment
- to protect and conserve all historical and archaeological aspects of the environment
- to enhance existing spaces with good conservation and wildlife protection in our chalk downland area
- to encourage and educate in the principles and practice of responsible conservation and environmental protection

Come And Enjoy
Free Mulled Wine – Free Mince Pies – Free Entrance

Music On A Friday

presents

A CHRISTMAS SPECIAL

8th December 7.30 pm

St Mary's and Ethelburga Church, Lyminge

Music by: *Joskins Duo – Cheriton Ukulele Band*

Mike And Norah Chinneck – Will Wright

Just Us – Emma Christianson and more

LOOKING FORWARD TO SEEING
YOU THERE



ETCHINGHILL CHRISTMAS MARKETS

Saturday 2nd and 16th December

Fresh bacon roll £1.50 \$ Cup of tea or coffee 50p

From 10am

Home made jam, pies, pickles & cakes
Fresh fruit and vegetables. Handmade greetings cards
Order your fresh Christmas pork joint
Hand crafted wooden utensils
Knitwear, made to order
Hand made jewellery

AN ENJOYABLE HOUR

Plenty of free parking
ETCHINGHILL VILLAGE HALL
Charity No. 302736



What Successful Events.....!!

Lyminge Village Hall would like to thank everyone who attended our Autumn events helping to raise over £3,000 in much needed funds to continue improving the hall. We welcomed many new faces to our "Almost Oktoberfest", the second year of running this event and as everyone enjoyed themselves so much we booked the wonderful Bettesteiner Footstompers for next year; put the 6th October in your diaries now!



We were lucky again this year with the weather on **Bonfire night**. Thanks to everyone who came along and helped to make it a fun, happy and safe event. The committee would also like to thank St Johns Ambulance for being on hand, Lyminge Youth Action for selling glow sticks, Lyminge Beavers for donating the guys, Flashpoint fireworks for their amazing display, our brilliant DJ and all our other volunteer helpers and stewards.

Look out for details of our next event coming back soon by popular demand... 90's Music Quiz night.

Who's Who in our Neighbourhood - Lyminge Bridge Club

In the 1980's a Bridge club in Etchinghill and one in Elham merged to form the Lyminge Bridge Club.

The Bridge players in the club come from varied backgrounds with a wide spread of ages. Some members are new to Bridge and some have great skill and experience from many years of playing but we all have fun and enjoy our Bridge together.

Bridge is not as difficult to learn as some people think and the members of Lyminge Bridge Club are more than happy to give free lessons to complete beginners. You do not need to bring a partner as current members will partner you and help you along.

Once you have learned the basics it is an intriguing and absorbing game which stimulates the brain. It is also a great way to make new friends. We play Rubber and Chicago Bridge (but not Duplicate) in a pleasant, informal atmosphere. We meet every Monday morning from 10.00 -12.00noon at Lyminge Bowls Club for a game of Bridge, a cup of coffee and a chat. This is a very social, non-league Bridge Club which is not affiliated to the National or Kent County clubs. Members pay £1 a week which includes tea, coffee and biscuits and there is a small annual affiliation fee to the Bowls Club.

So just turn up on any Monday or for further information contact **Janet Fry** on **863177** or janet@rhodesminnis.org.uk



Due to the holiday period, the January edition of the Lyminge Newsletter will be delayed until about 7th January 2018

LYMINGE VILLAGE FOOTIE CUBS

Pre-School Football Coaching Sessions

A positive, safe & fun introduction to football
Relaxed coaching, activities & games
A professional & reliable FA approved Coach
Parent Participation Essential

FOR: Pre-Schoolers (Age 2-until they start school)
WHEN: Saturdays (Term Time) 10:15am-11:00am
WHERE: Football Pitch behind Lyminge Village Hall
COACH: Mark Towse, Level 2 FA Coaching Award
COST: PAY & PLAY £3 per session



GET IN TOUCH for more info & to reserve a space:

 [facebook.com/Lymingefootiecubs](https://www.facebook.com/Lymingefootiecubs)

 **07793 026 010**

 mtowse@hotmail.co.uk

Beyond the Valley Travel (formerly Jay Bee Travel)

*Days Out & Holidays
leaving from Lyminge to Canterbury*

Join us along with your family and friends for a relaxing day out or tour further away both in this country or abroad. All trips and tours are in modern coaches with pick up points along the Elham Valley.

All outings & holidays are fully escorted.

For our current brochure please contact:

David & Surian Tamsitt

Tel: 01227 831501 Mob: 07880 333381

Email: beyondthevalleytravel@gmail.com

Member of the Association of Group Travel Organisers



**ASHTON
TREE CARE**

07929 627622 • 07769 908027
OLLIE@ASHTONTREECARE.CO.UK



ALL WORK FULLY INSURED
HEDGE CUTTING • STUMP GRINDING • TREE SURGERY



Looking forward to
Christmas?

Do something special this year
by making Christmas Day a wonderful for those that would
spend the day alone.

The Christmas Day Lunch Club set up in 2011
needs your help.

Can you pop in a few extra veg and bring them to the hall,
lend a hand setting up on Christmas Eve
or clear away on Boxing Day.

If so, please call

Sam on
01303 863265



Are you on your own this Christmas Day.

Then why not book your place and have a wonderful day.

The Christmas Day Lunch Club set up 6 years ago
provides a 3 course lunch, entertainment, pack-up tea
and plenty of cheer for singles and couples on their own.

Its held at Lyminge Village Hall on 25th December

Start time 11am

Transport can be provided

Booking is essential

Please call Sam for more details or to book a place.

01303 863256

CANTORES

Musical Director: Adrian Bawtree

AN EVENING OF CHRISTMAS MUSIC

Sibton Park, Lyminge

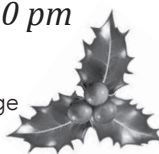
Friday 15 December 7.30 pm

and

Wednesday 20 December 7.30 pm



By ticket only
£10.00 including refreshments
Box Office: Laing Bennett, Lyminge
www.cantoresdominicae.co.uk



Charity no: 1087409

BALLROOM & LATIN DANCING

at

Etchinghill Village Hall

Beginner Classes

Thursdays 7.30-8.30pm

Sundays 8.00-9.00pm

Improver Class

Thursdays 7.30-8.30pm

£6 per person per hour

- A great way to keep fit (mind and body), meet new friends, have fun and fill those winter evenings. Oh and of course, learn to dance
- Partners not necessary



Xmas Party - Thursday 14th December

**Holiday Shutdown - 17th December 2017 to
7th January 2018 inclusive**

To join any of my classes, or for further details, or
information about private lessons & parties contact

Lynn on 07967979610 / 01303 279504

lynn.chapman0127@btinternet.com

IDTA (AB), (AL), (SalDip)

FAMILY HISTORY Interested in your ancestry?

Lacking the time or expertise to research it yourself?
Then give me a call, or email me, to arrange a free, no
obligation, initial chat.
Research is undertaken at very affordable rates to suit
your pocket.

Clive Stanyon: 01303 840820 07771 922192

stanyonc@aol.com



Bookkeeping Services

www.aabookkeepingservices.co.uk

Bookkeeping • Financial Accounting and Accounts

Preparation for Sole Traders and Partnerships

Word, Excel, Outlook, Sage and VT Final Accounting Software

Self-assessments and VAT returns

Anita Adams BSc (Hons) AATQB

Over 10 years' financial experience

07891 135766 01303 864254

Fixed prices available

anitaadams@live.co.uk

or hourly rate £15 per hour

First Aid - Red Cross Training in Lyminge

The Lyminge Association was concerned by news from the British Red Cross that 3 out of 4 parents in the UK would not be able to save their baby from choking, with less than a quarter of parents having both the skills and the confidence to help.

In the spirit of helping our communities to help themselves, the Lyminge Association sponsored the Red Cross course, First Aid for Baby and Child, that was held in the Tayne Centre on 28th October, offering the places free of charge to our residents.

The course had been designed to deal with a range of childhood emergency situations; from cuts and burns to broken limbs, choking and unresponsiveness to fever and meningitis. By the end, the 13 participants felt they had learned a great deal and were much more confident that they could face a real-life situation.

As the session ended, the trainer demonstrated how to use a Defibrillator and the attendees were encouraged to have a go - especially useful now there are two in Lyminge and one in Etchinghill. More info on using these devices in the January newsletter.

Lyminge Businesses' Christmas and New Year Opening Hours 2017

	Sat 23-Dec	Sun 24-Dec	Mon 25-Dec	Tues 26-Dec	Wed 27-Dec	Thurs 28-Dec	Fri 29-Dec	Sat 30-Dec	Sun 31-Dec	Mon 01-Jan	Tues 02-Jan
		Christmas Eve	Christmas Day	Boxing Day					New Year's Eve	New Year's Day	
Age Concern	Closed	Closed	Closed	Closed	9am-4pm	9am-4pm	9am-4pm	Closed	Closed	Closed	Open as normal
Auto-Economy Garage	8.30am-12noon	Closed	Closed	Closed	Normal Hours	Normal Hours	Normal Hours	8.30am-12noon	Closed	Closed	Open as normal
Chemist	9am-1pm	Closed	Closed	Closed	9am - 1pm & 2:30 - 6:30pm	9am - 1pm & 2:30 - 6:30pm	9am - 1pm & 2:30 - 6:30pm	9-1pm	Closed	Closed	9am - 1pm & 2:30 - 6:30pm
China China	Normal Hours	Normal Hours	Normal Hours	Closed	Closed	Closed	Normal Hours	Normal Hours	Normal Hours	Normal Hours	Closed
Coffee Cabin		Closed	Closed	Closed	Closed	Closed	Closed	Closed	Closed	Closed	
Coach and Horses	Normal bar/kitchen hours	Bar - 12noon-12 midnight; Food - 12noon - 4pm	Bar 12noon to 2pm; Kitchen closed	Closed	Normal bar/ kitchen hours	Normal bar/ kitchen hours	Normal bar/ kitchen hours	Normal bar/ kitchen hours	Bar 12noon to 1am (Tickets only from 7pm); Food - 12noon - 4pm	Bar 12noon - 6pm; Food 12-2pm	Normal bar/ kitchen hours
Food & Wine	7am-9pm	7am-7pm	12noon-2pm	7am-4pm	7am-7pm	7am-7pm	7am-7pm	7am-7pm	7am-7pm	8am-2pm	7am-9pm
The Gatekeeper	Normal Hours	Normal Hours	Normal Hours	Normal Hours	Normal Hours	Normal Hours	Normal Hours	Normal Hours	Normal Hours	Normal Hours	Normal Hours
Laing Bennett	Closed	Closed	Closed	Closed	Closed	10am-2pm	10am-2pm	Closed	Closed	Closed	Normal Hours
Library	10am-2pm	Closed	Closed	Closed	Closed	9-6pm No Rhymetime	9-12noon No Talk Time	10-2pm	Closed	Closed	9-12noon
Post Office /Newsagents	7am-9pm	7am-9pm	Closed	9am-6pm	7am-10pm	7am-10pm	7am-10pm	7am-10pm	7am-6pm	7am-6pm	7am-10pm
Snippers and Clippers (Ladies)	9am-4pm	Closed	Closed	Closed	9am-6.30pm	9am-5.30pm	9am-5.30pm	9am-4pm	Closed	Closed	9am-5.30pm
Snippers and Clippers (Men)	9am-4pm	Closed	Closed	Closed	9am-12noon; 2pm-6pm	Closed	9am-12noon; 2pm-6pm	9am-4pm	Closed	Closed	9am-12noon; 2pm-5.30pm
Spicy Touch	Normal Hours	Normal Hours - 9.30am	Normal Hours	Normal Hours	Normal Hours	Normal Hours	Normal Hours	Normal Hours	Normal Hours - 9.30pm	Normal Hours	Normal Hours
The Surgery, Church Road	Closed	Closed	Closed	Closed	Normal Hours	Normal Hours	Normal Hours	Closed	Closed	Closed	Normal Hours
The New Surgery	Closed	Closed	Closed	Closed	Normal Hours	Normal Hours	Normal Hours	Closed	Closed	Closed	Normal Hours
The Clinic - Lyminge (By appointment only)	Normal Hours	Closed	Closed	Closed	Closed	Osteopath Appointments Only	Closed	Closed	Closed	Closed	Normal Hours

Lyminge a history volume 9 – Review – Part 1

Once more we have persuaded Nigel Thomas to undertake another review, this time of our latest volume in the Lyminge Historical Society's **'Lyminge a history'** series. Readers will be pleased to note that this volume is available in the shops and will form part of our latest bundle offer. Please see the LHS advert in the Lyminge Newsletter December edition (P8).

The length of the full review will use too much space in this issue of the Newsletter so we have split it in two. Hopefully the Editor will find space for the second part in next month's issue.

From the pen of Nigel Thomas - Elham

"It is always a delight to receive another part of the ongoing history of Lyminge. There is such a rich vein to be mined, so much of the village to reveal and make relevant to modern inhabitants and visitors. Part Nine is no exception. It is presented as a tribute to Duncan Harrington, and readers of past volumes will know why. He was the original inspirer and has been a continuous contributor to all editions and his insitences and examples have to a great extent shaped the scrupulous and interest-filled pattern of the Histories.

This has been totally exemplified by the new volume.

There is a beautifully presented article by Robert Baldwin about a polished flint axe-head found on a byway near Lyminge which points to a Neolithic farmer offering evidence of the first indication of permanently settled life in the Lyminge area.

A glorious feature of past editions has been the personal reminiscences of senior members of the village. Margaret Anne Older, born in 1924, presents part one of what I hope will be several episodes depicting her life and time in Lyminge. And then Duncan Harrington gets burrowing among old records! We learn about the creation and maintenance of the Village Bowls Club and a mysterious wooden village hall that people remember existing but nobody can state when it was built or when it was dismantled.

Duncan is good with mysteries and the next article is a cracker, "Sword Wielding Vicar Slays Chaplain". I won't reveal the story: suffice to say, "All is not what it seems!"

Some of us enjoy looking at gravestones and wondering.....There is one in Lyminge Parish Churchyard of the Marquis de la Belinaye, and Michael Foxon also wondered and produced a fascinating piece of very specific research."

The second part of Nigel's review will appear in a future issue of the Newsletter. If you cannot wait we will be posting a copy in the LHS notice board by the Post Office.

The LHS is extremely grateful to Nigel for his review which as always is independent and fair to the authors.

LHS November 2017

Park House Sanctuary Boarding Kennels & Cattery

Park House, Stelling Minnis CT4 6AN
Brick-Built Heated Kennels ~ Daily Walks
Reasonable Rates ~ Dogs must be fully inoculated
Heated Cat Chalets ~ Quiet Area Inspection Invited.
To book or for further information, call
01303 862622 or email lord.whisky@btinternet.com
www.lordwhisky.co.uk

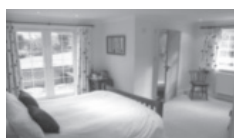
Technical Help When You Need It!

Gadget setup Internet help and training
Purchase advice Security concerns (parental advice)
Help with email TV remotes and tuning PC & Mac
For all those little problems you want to sort.

Call Nigel on 01303 647220 or email
nigel@digitaldoctor.me

Experienced and qualified, 20 years in IT. Excellent rates.

Bridge Cottage Bed & Breakfast 4 Stars Silver Award



Luxury accommodation in a tranquil setting
Chris & Alison, Shuttlesfield Lane, Ottinge
01303 862933 www.bridgecottagesimplybandb.co.uk

Matthew Reynolds Window Cleaning Services

More than 20 years experience in Lyminge
and surrounding villages
For free estimates, please call
07975 510293

HAND MADE CURTAINS, ROMAN BLINDS AND SOFT FURNISHING CURTAIN ALTERATIONS

TEL: VALERY WREN 01303 237755

Andy Mannering Flooring

SPECIALISING IN AMTICO AND KARNDEN
LUXURY VINYL TILES

- Also safety flooring, rubber flooring, etc.
- Commercial and domestic work undertaken
- No job too small
- Free estimates and advice given
- Over 35 years experience
- Fully insured



Telephone: 0797 434 7248 or 01303 863095

Email: info@andymanneringflooring.com

Please visit my website for further information and
feedback **www.andymanneringflooring.com**

Help your child go far with Kip McGrath

Our qualified teachers create individual
tutoring programmes for your child, using
proven Kip McGrath methods.

- ✓ Maths
- ✓ English
- ✓ GCSE Maths specialist
- ✓ 11 Plus

Call today
for a FREE
assessment

kipmcgrath.co.uk

Ofsted
Registered

Folkestone & Hythe Centre
17, Manor Road, Folkestone, CT20 2SA
01303 249 100
folkestonehythe@kip-mcgrath.com

**Kip
McGrath**
EDUCATION CENTRES

RECRUITING NOW



Would you like a flexible, rewarding career in care?
Are you looking for full time hours? Part time work to fit in
around your lifestyle? or to hours top up your weekly income?

Benefits of working in Homecare with Nurse Plus-

Flexible Hours – day, evening and weekend work

Excellent Weekly Pay – up to £10.37 per hour, plus holiday pay

Rewarding career – job satisfaction

No experience needed – Start a new career

Free Training – Qualification opportunities

Staff Benefits – Staff Lottery & Plus Points Scheme

Call Nurse Plus today: 01303 250200

www.nurseplusuk.com homecare@nurseplusuk.com

Cambridge Weight Plan™ Independent Consultant

Anita Adams - Etchinghill

Get back in the picture! With one-to-one support, you can
trust Cambridge Weight Plan.

Call me today for more information about the plan. I can
help you all the way!

Tel: 01303 864254 / 07851614867

Email: anitaadams@live.co.uk

Facebook: [cambridgeweightplanconsultantsoutheastanita](https://www.facebook.com/cambridgeweightplanconsultantsoutheastanita)

Editor: pb@pbarnes20.plus.com

Shuttlesfield Barn - 4* Gold - Self Catering



Rural location in Kent's AONB
Families and all pets welcome.
Two bedrooms, ensuite shower
and wet-room. WiFi. TV/DVD.
Holiday, short & relocation stays.
Heated outdoor pool (Summer)
CT18 8LB 01303 862729
Web: www.shuttlesfieldbarn.co.uk
Email: info@shuttlesfieldbarn.co.uk

Maths Tuition

Barham/Elham/Lyminge/Etchinghill

I am a fully qualified maths teacher with 25 years' experience, and excellent results.

I offer tuition for the following;

- Year 5 Maths for the Kent Test
- Key Stage 3 Boosters
- GCSE

For further information please call or text me:

Esther 07456 066690
DBS certificate available.

Etchinghill Baby & Toddler Group

We are a friendly toddler group, which caters for babies and children from 0 to school age. Crafts, messy play, trikes, toys and a singing session are included each week. In dry weather there is also outside access for the children to play.

We meet on Wednesdays between 10am -12noon at Etchinghill Village Hall. We charge £2 per family, 1st session is free. Tea/coffee and healthy snacks are provided.

If you have any queries please contact

Cait Byrne - 07850757571

Lyminge Baby and Toddler Group

We'd love you to bring your little ones along to our informal and friendly group for lots of fun. Come along and join us for craft, singing and lots more. We meet every Tuesday morning at the Tayne Centre 10.00-12.00, term time only. Cost: £2.00 per session, including refreshments for all.

Call: Any enquiries – **Jenny 0756 4130569**
Sarah 0798 4939220.

E-mail: **lymingetoddlergroup@yahoo.co.uk**

Rhodes Minnis Toddler Group

-needs new members



We are a small friendly group who meet on Thursday mornings (term-time) 10am-12 noon in Rhodes Minnis Village Hall. First morning is free. **Coffee Morning Thursday 30th November 10.30am -12noon - Open to all.**

We have a good selection of toys and craft, dough, books and puzzles. Refreshments provided for everyone.

For more information phone **Elaine on 01303 863096**

Lyminge Library Opening Times

Monday	2 - 5pm	
Tuesday	9 - 12noon	Tel: 03000413131
Wednesday	Closed	lymingelibrary@kent.gov.uk
Thursday	9 - 6pm	
Friday	9 - 12noon	
Saturday	10 - 2pm	



Lyminge Pre-School

Ofsted
Outstanding

Lyminge Preschool provides quality Early Years education and day care all year round for children aged 2-5 years. The Pre-School is run by a team of qualified, highly experienced and dedicated practitioners.

Lyminge Pre-school has a safe, stimulating and fun environment that provides support and challenge for all of the children's individual needs. We welcome all children from the age of two from all surrounding areas.

To arrange to meet the team, please call 01303 863149 (day) or email lymingepreschool@gmail.com and visit our website www.lymingepreschool.org.uk

Looking for homecare services?

Our experienced Care Assistants are on hand to offer support to the elderly, people with a learning or physical disability or other care needs for home services no matter your needs -

- ✓ One call a day to multiple calls
- ✓ Short term or long term packages
- ✓ Home from hospital assistance
- ✓ General assistance or complex care
- ✓ Weekday, weekends, days, night call times

NURSE PLUS

Contact your local branch today
01303 250200
www.nurseplusuk.com
Direct Payments Accepted



PIANO LESSONS FOR ADULTS

Have you always wanted to learn to play the piano but have lacked the opportunity, or faith in your own ability? Did you learn as a child and now regret having given it up?

I specialise in teaching adults and have developed a method which will enable you to progress quickly and with great enjoyment.

Please contact: **Lise Cribbin, Bridge 01227 637709**

HYTHE AQUA

swim21
Club Accredited

CLUB MARK

Adult Swimming with Hythe Aqua

- Can you swim lengths (25m)?
- Are you between 17yrs and 70yrs+++++
- Do you want to improve your swimming skills?
- Do you want to improve your fitness?

We can help you improve under the direction of our experienced Swimming Coaches. You may want to simply improve your swimming skills and fitness, or even take part in competitions such as Masters Swimming, Triathlons or Open Water – we can help. Two sessions available each week, starting session Fridays at 8.00pm – Hythe Pool.

To book your place phone: 01303 862353 or checkout our website: www.hytheaqua.org.uk

Rhodes Minnis Village Hall

Charity No.800345

Rhodes Minnis Village Hall is located 2kms (1¼miles) from Lyminge and just off Longage Hill and Whitehorse Lane in Chapel Lane

The hall, which holds Hallmark accreditation, is ideal for children's parties, band practice, quizzes, meetings and fundraising events and has the capacity to take parties of up to 100. The rates include the use of the kitchen.

Rates

Mon to Fri £15 per session £40 all day
Sat & Sun £20 per session
£30 for evening session and £60 all day

Sessions

AM session 08.30 - 12.30
PM session 13.30 - 17.30
Evening session 18.00 - 23.45

There are special rates for regular users.

For all bookings and enquiries please contact:

Martin Fry 01303 863177 e-mail: book @rmvh.org.uk

Sibton Park Cricket Club

We extend an invitation to our local residents, please join us on match days and selected evenings and take advantage of the Club's outstanding venue, facilities and fully licensed bar.

Having a Celebration? Require a regular venue?

The club house and grounds are available

For further information or to make a booking

please contact: Adrienne and Steven Rowe
07545 280342 - age-rowey@hotmail.co.uk



bus times

for buses from Lyminge Post Office to

Folkestone town centre via Etchinghill & Cheriton High Street

MONDAYS TO SATURDAYS except Bank Holidays

There are route 17 buses at 0705 (not Saturdays), 0749, 0909, 0934 (not Saturdays), 1004, 1034, 1104, 1204, 1304, 1404, 1514, 1614, 1619 (schooldays only), 1654 (schooldays only), 1719, 1749, 1834, 1929, 2113 and 2313.

There are also route 18 buses to Sandling Station & Hythe - for times see our website or call the number below.

SUNDAYS & BANK HOLIDAYS

There are route 17 buses at 0947, 1147, 1347, 1547, 1802 and 2002.

for buses from Lyminge (opposite Aberdeen House) to

Canterbury city centre via Elham, Barham & Bridge

MONDAYS TO SATURDAYS except Bank Holidays

There are route 17 buses at 0727 (schooldays only), 0732, 0752, 0903, 0938, 1028, 1128, 1228, 1328, 1443, 1613, 1703, 1803, 2001 and 2201.

There are also route 18 buses to Canterbury via Stelling Minnis and Bossingham - for times see our website or call the number below.

SUNDAYS & BANK HOLIDAYS

There are route 17 buses at 0827, 1027, 1227, 1427, 1642 and 1842.

These times will operate from 3 April 2017.



timetable information **0871 200 22 33**

Calls cost 12p per minute plus your phone company's access charge

www.stagecoachbus.com

Lyminge Village Hall

Registered charity 28145

Large, refurbished, flexible hall with great facilities

From Theatre productions to Weddings, Craft Fayres to Childrens' parties - we've got it all covered!

Capacity: 200 people dancing / audience seating,
100 for table seating, 50 or less for meetings

Well equipped: stage, kitchen, small rooms, ample parking facilities, disabled access

Access to: playground, skate park, large playing field &

Situation: Rolling hills behind and the Church to the front.

Find out how we can help you with your next event:

BOOKING LINE: 07497625 741

EMAIL: info@lymingevillagehall.org.uk

Guideline prices

MAIN HALL HIRE ~ Fri, Sat PM £65

SMALL ROOM ~ £20

EXCLUSIVE ALL HALL ~ £320



Find us on Facebook
or follow us on Twitter @ Lymingevhall



ETCHINGHILL VILLAGE HALL HIRE FEES

The next time you are thinking of holding a function why not try Etchinghill Village Hall, which holds the highest Hallmark accreditation level (Hallmark 3), with its excellent facilities, including ample parking space. The standard hire charge for the main hall and kitchen are:

Weekdays £11.00 per hour

Saturdays £13.00 per hour

Sundays £13.00 per hour

During the winter months (1 November to 31 March) a Winter Supplement of £1.00 per hour is added to the above rates.

Special rates apply for Weddings and all day events with discounts on the above rates applying to Etchinghill Residents and Regular Hirers.

The use of a separate Committee Room is also available.

For all bookings or enquiries please contact:

The Duty Manager on 07514-758936

TAYNE CENTRE HALL HIRE

Previously known as the Lyminge Methodist Church Hall



Clayson Hall

1 October to 31 May (including heating) £9.50 per hour :

£34.00 per 4 hour session : £66.00 full day

1 June to 30 September

£7 per hour : £25.00 per 4 hour session : £48.00 full day

Rigden Room (Parlour) with heating, if required*

£7 per hour all year (*electric - over heaters).

Burren Room - storage only

Overnight Stays

1 June to 30 September £50; 1 October to 31 May £60

For any enquiries please call **07971 722 401**

This page is printed to give readers and organisers the opportunity of planning events without clashing with existing ones, which are already in the 'diary'. It is not intended as a means of advertising and we take no responsibility for errors or omissions. Acceptance is at the discretion of the editor. Please send your updates by email to pb@pbarnes20.plus.com or via methods outlined on Page 2. Location and name codes follow:

C&H: Coach & Horses; ECC: Etchinghill Cricket Club; EVH: Etchinghill Village Hall; ERA: Etchinghill Residents' Association; ELVH: Elham Village Hall; ES: Elham Square; JC: Jubilee Centre; JF: Jubilee Field; KH: Korf House; LB: Laing Bennett; LBC: Bowls Club; LL: Library; LMC: Lyminge Methodist Church; LPC: Lyminge Parish Church; LSH: Lyminge School Hall; LVH: Lyminge Village Hall; LW: Lord Whisky; NP: Nailbourne Court; NVH: Newington Village Hall; PC: Postling Church; PH: Lord Whisky, Park Hse; PVH: Postling Village Hall; RVH: Rhodes Minnis Village Hall; RMC: Rhodes Minnis Church; RR: Rigden Room; SNL: See News Letter for info; SP: Sibton Park; TC: Tayne Centre.

One-Off Events

Date	Time	Event	Where	Tel. No.	Date	Time	Event	Where	Tel. No.
02-Dec	7pm	The Big Fat Christmas Quiz	EVH	863819	20-Dec	7.30pm	An Evening of Christmas Music	SP	07813071867
02-Dec	7.30pm	Haywardians Concert	LMC		22-Dec	5pm	Delivery of Christmas Parcels		
03-Dec	5pm	Mount Pleasant Close Lights			25-Dec	11am	Christmas Day Lunch	LVH	863256
03-Dec	7pm	Switch On			2018				
03-Dec	7pm	ERA AGM	EVH	863164					
06-Dec	7.30pm	The Railway Swing Band	ElhamVH	840820					
08-Dec	7.30pm	Music on Friday	LPC		24-Feb	7.30pm	Town Concert Band	LVH	863737
15-Dec	7.30pm	An Evening of Christmas Music	SP	07813071867	21-Apr		Garage Safari		863537
					16-Sep		Garage Safari		863537

Happy Christmas to ALL our Readers

Weekly Events

Day	Time	Event	Where	Tel. No.	Day	Time	Event	Where	Tel. No.
Mon	10am	Open House	EVH	863394	Wed	11am	Singing For Health	JC	862364
Mon	10am	Bridge Club	BC	863177	Wed	11.45am	Pilates	TC	07825109670
Mon	10.30am	Lyminge Larks (Singing)	LMC	07951 572920	Wed	7pm	French Conversation	KH	862972
Mon	11am	Cookery	JC	269602	Wed	7.30pm	Cantores Dominicae Choir	LSH	07813071867
Mon	2pm	Computer Buddy (need to book)	LL	03000413131	Thur	9.30am	Baby Rhyme Time	LL	03000413131
Mon	2.30pm	Knit and Natter	TC	863049	Thur	10am	RM Toddlers Group	RVH	863096
Mon	6.30pm	Ballroom/Latin/Salsa Dancing	TC	07966 751991	Thur	10am	Art Group - Morning	TC	211364
Mon	6.30pm	Judo Club	LVH	862946	Thur	11am	Shopping trips to Supermarket	JC	269602
Mon	7.30pm	Yoga	RMVH	07977503897	Thur	2pm	Art Group - Afternoon	TC	862972
Tues ¹	10am	Baby & Toddler Group	TC	863274	Thur	7.30pm	Ballroom and Salsa Dancing	EVH	07967979610
Tues	10am	Baby Signing	EVH	07800737936	Thur	6.45pm	Short Mat Bowls	LVH	863842
Tues	10.30am	Art Class	JC	269602	Fri	10am	Feel A Fairy Tale Sensory	EVH	07800737936
Tues	11.15am	Chairbics	JC	269602	Fri	10am	Talk Time	LL	03000413131
Tues	11.15am	Feel A Fairy Tale Sensory	EVH	07800737936	Fri	11.15am	Baby Signing	EVH	07800737936
Tues	6.45pm	Short Mat Bowls	LVH	863842	Fri	11am	Seated Exercise	JC	269602
Wed	10.15am	Mature Movers (Exercise)	TC	862873					

Monthly Events

When	Time	Event	Where	Tel. No.	When	Time	Event	Where	Tel. No.
3rd Mon	7.30pm	Etchinghill Cinema	EVH	863333	2nd Wed	10.30am	Mothers Union	NP	862221
Last Mon		Parish Council Meeting	SNL	07715221705	4th Wed	2.30pm	RM Circle	RVH	862913
1st Tues	10.30am	Reading Group	LL	03000413131	Last Wed	7.30pm	Quiz Night	C&H	862694
1st Tues	11am	Reminiscence	JC	269602	1st Thurs	7.30pm	British Legion, Elham Branch	St Mary's Hall, Elham	862508
1st Tues ²	7.30pm	LHS Talk/Event	TC	862972	4th Fri	7.30pm	Beetle Drive	RVH	862616
3rd Tues	9.45am	Family History	LL	03000413131	Last Fri	1.30pm	Team Quiz	JC	269602
3rd Tues ³	7.30pm	Gardening Society	TC	862264	1st Sat	10am	Village Market	EVH	863819
Last Tues	10.30am	Poetry Group	LL	03000413131	2nd Sat	10am	Postling Ch. Coffee Morning	PC	863536
1st Wed	10.30am	Lyminge Friends	LMP	862598	3rd Sat	9am	Saturday Market	TC	862164

¹ In term time only ² Except Jan and Feb ³ Except Jan, Feb, Aug ⁴ Except Aug and Dec

Out and About

Do you have any photos of local events or local groups in action, please call 01303 862699.

Give your group a FREE plug!



▲ Annie Lindley, Maggie Young and Terry Long receiving their awards from **Lyminge Bowls Club** President, Mrs. Rosemary Brooks at the Club's Presentation Evening on 27th October.



▲ Father Christmas was kept busy handing out sweets to the children at the grand Switch-On of the Village Christmas Tree on Thursday 23rd November. Special thanks to Laing Bennett, Lyminge Library, the Lyminge Association for helping make this event a success, and to everyone who came to join in!



Memories of Lyminge Library

Ernest Hayesmore came to Lyminge in 1915 and became a porter at the Station in 1917. In 1922 he was promoted to porter signalman. He continued to

work at the Station until 19th April 1945 when, as he was opening

the booking hall he had a heart attack and died with the keys in his hand. The bench outside Lyminge Library was unveiled by Lucy, the great, great granddaughter of Ernest Hayesmore. The Laverty family of Lyminge arranged for the placing of the bench, Ernest being Chris Laverty's grandfather.



▲ The **Remembrance Service** held on Thursday 9th November complete with special prayers said by the children and a very beautiful recitation of *In Flanders Fields*.



Remembrance Sunday itself saw the Rainbows, Beavers, Brownies, Cubs, Guides and Scouts together with a very large congregation gathered around the village War Memorial



Mystery Photo

Last month's picture showed the stream that runs from Station Road up towards the Rectory, complete with mallard ducks!

Where is this view?

The clue is in the background!



The St Nicholas Fayre

on 25th November with a barbecue at the south door to welcome customers to the beautifully decorated and filled stalls. St. Nicholas himself seen here chatting to visitors. Musical entertainment was provided throughout the event by Lyminge Handbells, Penny Keutenius with her accordion, Jeff Hartley singing to his guitar and Will Wright on the saxophone.



DILTON MINI SKIP HIRE

Ballast, Hardcore, Sand
and Topsoil Supplied
REGISTERED WASTE CARRIER
01303 812448 or 07799 433754

'Helping you enjoy your garden'

CRT Gardening

Knowledge of general gardening, including lawn care,
hedge trimming and cutting, vegetable garden work, fencing
installations and repairs, small and medium size tree work and
ongoing maintenance of all of them.
Heavy-duty work is also undertaken.
Free estimates; fully insured. Karl Dodd 07967442518
Email: karl.dodd@live.co.uk www.crtgardening.com

AIR LINK CARS

(You pack up, we pick up)

Airport, Seaport & Long Distance Travel Specialists.
The Family Run Business where service really counts
Estate cars and People Carriers



Fixed price 24hrs a day. No extras.
Written Confirmation of booking.
For the Easy Airport Link, Think AIR LINK!
01303 670370 - 07766 824 474
airlinkcars@yahoo.com

KW CONSTRUCTION

Plastering & Rendering Specialist

Maintenance, renovations, extensions,
landscaping, patios, brickwork, roofing

- 30 years experience
 - Competitive rates & free estimates
 - Fully insured, prompt & reliable
- 07743488361/01303 862 653/info@kwconstruction.co.uk



Laing Bennett

PHILIP A CHAPMAN

With our excellent local knowledge, service
and two local offices we will get you moving

The Estate Office 8 Station Road Lyminge Kent CT18 8HP
T 01303 863393 E lyminge@laingbennett.co.uk
134 High Street Hythe Kent CT21 5LB
T 01303 264846 E hythe@laingbennett.co.uk

www.laingbennett.co.uk



Hawkinge
Veterinary Surgery

Veterinary Surgery

Opposite Lidl supermarket

A new independently owned veterinary surgery for small animals.
Separate waiting, consultation & recovery rooms for cats/small pets and dogs.
Opening hours: Monday to Friday 08:00-19:00
Saturday 08:30-13:00 24 hour emergency service
Hawkinge Veterinary Surgery 9b Defiant Close Hawkinge
CT18 7SU Tel: 01303 764190
www.hawkingevetsurgery.co.uk
hawkingevetsurgery@gmail.com

SNIPPERS & CLIPPERS

UNISEX HAIR SALON



APPOINTMENT NOT ALWAYS NEEDED



WEDDING & SPECIAL OCCASION



GENTS WELCOME



FREE WIFE



SHELLAC NAILS

4 Station Rd, Lyminge,
Folkestone,
Kent, CT18 8HP

01303 647 222
info@snippersandclippers.co.uk



SCRUBBERS - Est. 1988

THE HOME AND COMMERCIAL CLEANERS

One off, regular or moving day 'Blitz'

Oven cleaning - Ironing

Carpet cleaning and more...

For a friendly and reliable service

Free Estimates

Tel: 01303 249288 or 07834 128671

Dennis Huntley

Installer of wood and multi-fuel stoves, heating engineer,

chimney sweep

Lyminge 01303 862 343

Mobile: 07850 784 365



SEATHWAITE BOARDING CATTERY LTD.

Supporting Rhodes Minnis Cat Sanctuary

GREEN LANE, RHODES MINNIS, CT4 6XUTEL: 01303 862243 (Registered charity 262245)

ONLY CATS BOARDED, IN QUIET COUNTRY LOCATION

Individually heated chalets. Single cat £7 per day, a reduction
for 2 or more cats. All cats boarded with us must have current
vaccinations against cat flu & feline enteritis. All profits from the
boarding cattery go to support homeless cats in the Sanctuary.

RHODES MINNIS CAT SANCTUARY

has a wide variety of cats available to caring homes.



CEDAR HOME MAINTENANCE

Building Alterations
Kitchen Installations
Painting & Decorating
Plumbing
Plastering

Damp Proofing
Drainage
Carpentry
Re-pointing
Patio's

Windows & Doors
Gutters & Down Pipes
Fascia's & Soffits
Glazing
Electrical

Roofing
All Work carried out by Qualified Tradesmen (Fully insured - all areas of Kent covered)

Call Dominic: 07968197613 Office: 01303 230787

cedarhm@hotmail.co.uk and www.cedarhomemaintenance.co.uk
Environment Agency Registered (Reg/472477) Established Since 1986

HOLDEN PLASTERING

All aspects of Plastering

Smooth-over Artex - a speciality.

Coving, Tiling and Plumbing

Phone JAMES for free estimate or advice on:

01303 770449

07773 262970

Tressenden Designs

A seamstress and costume maker with 8 years of experience.

- ♦ Clothing alterations ♦ Repair work undertaken ♦ Made-to-measure; create a bespoke piece for those special occasions
- ♦ Modern and vintage designs ♦ Costumes, ball gowns and wedding dresses

For more information or a quote please contact Amy on: Mobile: 07853 202304 Email: amy.louise.ford@hotmail.co.uk



D.M.B. Plastering

All aspects undertaken
*Interior. Exterior. Plastering. Rendering.
Coving. Ceilings Wall. Floors
Finest quality assured. CSCS Certified.
30 years experience.*

Free estimates. Reliable service. Fully insured.
Call **David** on **07818 607209**

P Davis + Co

General Builders and Roofing Specialist
All work undertaken
Call for free estimate

Tel: **01303 863049** or **0784 6769643**

Personal Computing

For straightforward I.T. advice, solutions
and training

Contact: **Steve Ashman**
862869

sra@ashman-consulting.co.uk



CARE FOR YOUR FEET

IAN COX MSSCh MBChA CHIROPODIST
at AGE UK HYTHE AND LYMINGE

Treatments include toenail cutting, corns, hard skin, fungus and more
Prices from £12.00

For further information and to book an appointment
'phone **01303 269602**



Wilco Plumbing & Heating

Central Heating Installations & Repairs
Gas & Oil Boiler repairs & replacements
5 Year Guarantee on Worcester Bosch Boilers.
Local Experienced Engineer, Emergency plumbing 24/7 call out
Registered with the Institute of Plumbing
Gas Safe Registered-OFTEC Registered
01303 862173 07860 452640
paul@wilcoplumbing.co.uk www.wilcoplumbing.co.uk

TOBY'S TREE SURGERY

Thinning - Reducing - Maintenance - Felling
ALL TREE WORK, BOTH PRIVATE AND COMMERCIAL,
UNDERTAKEN BY OUR NPTC TRAINED OPERATIVES
Professional Friendly Service

FREE ESTIMATES - FULLY INSURED
Contact Toby Griggs:
07854 098 395 or (01303) 489795

D. SCRIVENS

PLUMBING & HEATING
Oil Fired Boiler Installation,
Commissioning, Service and Maintenance.
Unvented Hot Water Systems - Solar Water Heating
Central Heating - Water Softeners - Bathrooms - Showers - En suites
Approved 'Aqualisa' Installer
WATER INDUSTRY 'APPROVED PLUMBER'
FULLY INSURED
07810 897076 scrivensplumbing@aol.com

East Kent Foot Care

Mobile Foot Health Practitioner
Jo Shapter BSc (Hons), MCFHP, MAFHP

Treating and managing common foot problems,
corns, callus, verrucae, thickened nails,
toe nail management, fungal problems,
diabetic foot assessments etc.

Call: 07745 532075

Member of the British Association of Foot Health Professionals



Total garden care for all your needs

TIM MILLETT

Grass Maintenance, General Gardening, Small & Medium
Size Tree Work, Stump Grinding and Wood chipping
Fencing Repairs & New Installations
Turfing, Hard & Soft Landscaping
Free Estimates - Fully Insured
01303 863676 07752 880583
Email: info@tmhorticulture.co.uk

THE BIG LITTLE BATHROOM COMPANY



COMPLETE BATHROOM SUITES • BESPOKE CAST IRON RADIATORS
TAPS • SHOWERS • TILES • ACCESSORIES • TEA & COFFEE

CANTERBURY ROAD, ETCHINGHILL, KENT CT18 8BS
sales@theblbc.co.uk • 01303 864349 • www.theblbc.co.uk

N.P.C.

Domestic Appliance Services

*Service and repair of washing machines, tumble driers,
dishwashers, cleaners and small electrical work. For a
prompt and friendly service*

Call **Neil Collard** **01303 892234** or **07798716044**
or **www.npcdomesticapplianceservices.co.uk**

Auto Economy Centre

Fully equipped Mechanical Repair & Service Centre
with the latest diagnostic equipment
MOTs £44.95

01303 863656
Orchard Garage, Canterbury Rd, Etchinghill
www.autoeconomycentre.com

Old English Pine

Antique, repro pine, oak and French-style painted furniture with beautiful and reasonable priced accessories to make
your house a home. Bespoke pine units made to order. Huge shop - over 3 floors. Open 7 days a week.

Tel: **01303 248560** **www.oldenglishpineinkent.co.uk** **100/102 and 90 Sandgate High Street, Sandgate**

Financial Planning

David Gridley - Chartered Financial Planner

Range of quality advice from a fully qualified adviser:

- Pre- and Post-Retirement Planning
- Investment Planning
- Inheritance Tax Planning

For further information, please contact our Lyminge office

David Gridley APFS

Tel: 01303 863959 Email: davidgridley@sjpp.co.uk

Local Ironing Lady

Smart,
Friendly Service

smartpress
SERVICES

Free delivery & collection – min order £10

Call or text - 01303 864229 / 07702 321686
tash@smartpressservices.com

OIL BOILER SERVICE

Professional Friendly Service. Prompt Response to Breakdown Calls. Over 40 Years Experience.

For Routine servicing, emergency breakdown calls and commissioning, contact:

P & V QUENBY LTD (Est 1987)

01227 760428

www.oilboilerskent.co.uk

T. Metcalfe Fencing Contractors

Approved Expert Installer for Jacksons Fencing

Established over 30 years

Fully insured - Highly experienced teams



Panel fencing, gates, decking, pergolas, post & rail, stock fencing, security, landscaping & tree surgery.

01303 840201 07790 290 155

metcalfefencing@btinternet.com

Proprietor - Derek Burr,
Ash Ridge House, Elham



OAK
creative



we're at Newingreen, call for a chat on 01303 812848

www.oakcreative.net

Advertising
Branding
Digital Design
Illustration
Marketing
Print Design
Web Design & Development

**KENT & SUSSEX
HOLIDAY COTTAGES**



With over 250 properties in this region and an expert local team, call now to book your break or to talk to one of the team about letting your property for holiday rentals

— 01304 619 444 —

www.kentandsussexcottages.co.uk • info@kentandsussexcottages.co.uk

12 King Street, Sandwich, Kent CT13 9BT

SPRINGRISE

SPRING RISE PET CARING SERVICE

DOG WALKING, PET FEEDING, PET VISITS & MUCH MORE!

Whether you need me regularly, short term or occasionally,

I provide a reliable, caring service for you and your pets.

Experience of working with a range of animals from small mammals to large farm animals

Free (no obligation) consultation. CV & references available.

Fully insured and security screened. Contact me (7 days a week)

Mobile: 07582407637 Email: susannahparkin@googlemail.com

Website: www.thespringrise.co.uk

Essential Beauty

*reflexology : aromatherapy : collagen mask facials
non-surgical perceptor : facials :uccio gel varnish
manicures & pedicures : waxing & eyelash/brow tinting*

Therapist with 20 years experience

Call Janene Moat 01303 840052

The Limes, High St, Elham.

Free eyebrow tidy for new clients.



Mini Digger and Operator for Hire

Call Mick for a competitive
quote

Mobile: 07979 881873

Landline: 01303 862079

Email: mickattwell@aol.co.uk

Absolute Financial Management

Daniel Stapley CeMAP

Independent Mortgage Advice

Initial Consultation Free!

Tel: 01303862568 or 07813030611

www.afmanagement.co.uk

SPEARPOINT
TREE SERVICES

All Aspects of Tree
Work Undertaken
NPTC Qualified
Fully Insured
Please call **Shane**
for a Free Quote
07963 203564 or
01303 621992



Sarah de Rougemont

Craftsman/Co-ordinator

UPHOLSTERY

All commissions considered
01227 455841 or 07973 377817



Are you running out of space and need an extension?

Or perhaps you would like to remodel your house?

Friendly local architect available to help you realise your dream home.

For a no-obligation consultation, contact Salma Barwani at ruddbarwaniarchitects@gmail.com or call 07770 196190





Ralph Allard Chimney Sweep



All chimneys, boilers and stoves swept.
Brush and Vacuum. Certificates issued.
HETAS and NACS registered, fully insured.

Member of National Association of Chimney Sweeps

01303 844465 or 07813716654

REGISTERED OSTEOPATHS & MEDICAL ACUPUNCTURIST

Adam Price B.Sc Hons (Ost) Katie Price B.Sc Hons (Ost)

The Clinic 01303 863359 or mob: 07980 897382

- Treatment of lower back pain, both acute and chronic
- Treatment of tension/cervical type headaches both acute & chronic
- Treatment of various stiff & painful arthritic conditions
- Treatment of sports injuries, both soft tissue & skeletal
- Deep tissue back, neck & shoulder massage for symptomatic relief

The cost of your treatment may be recoverable from your insurers. Please check

THE CLINIC
Garden Suite
Pendragon House
4 Station Road
Lyminge
Kent CT18 8HP
01303 863359



info@theclinic-lyminge.co.uk
www.theclinic-lyminge.co.uk



Sunhouse Electrical

Your local reliable Electrician

Part P Registered & Elecsa Approved

On Electrical Safety Register & Fully Insured

For a free quotation call James on

01303 766333

www.sunhouse-electrical.com



GOSBEE CONSTRUCTION

Fencing - Gates - Paving - Resin Surfacing

35 years experience.

Jacksons Expert Installer - Marshalls Paving Contractor

Call Martin Gosbee

07974 835511 01303 863337

gosbeeconstruction@gmail.com

Figures 4 Business LLP

Plan - Monitor - Control



Denise Roberts ACIS, ACMA

- Business plans and budgets
- Bookkeeping and payroll services
- Financial reporting & monitoring
- Qualified Company Secretary
- Qualified Management Accountant
- over 25 years experience

T: 07511 097707

E: droberts@f4b-kent.co.uk

W: www.f4b-kent.co.uk



MANOR VETERINARY CLINIC

We care for them all, great and small

Lyminge Clinic: Methodist Church Hall

Monday, Wednesday & Friday 4-6pm

Please call to book an appointment - 01303 273203

www.manorveterinaryclinic.co.uk

STERRY'S

*Independent
Funeral Director*

01303 272525

93 Cheriton High Street
(opp Co-op)

01303 264400

41 High Street, Hythe
(opp Lloyds Bank)

Always here for you; 24 hour service. Home visits on request.
Choice of pre-paid funeral plans

AMAZING AERIAL VIEWS PHOTOGRAPHY

- Personalised aerial photo of your home from £99
- Wedding aerial photos & videos
- Promotional videos of your business from £349
- Fully insured & qualified CAA UAV pilot

01303 863460 / 07905 031850 www.amazingaerialviews.com

Red Dragon I.T. Ltd.



- Windows, Mac & Linux Systems
- PC Health Checks
- Wired & Wireless Networks
- Website Design
- Graphic Design

T: 01303 723456 | E: info@rdit.co.uk | www.rdit.co.uk

The Old Granary, Hanover Mill, Church Rd, Mersham, TN25 6NU

LYMINGE FOOD AND WINE

01303 862225



We are here to serve you
Mon. - Sun. 7:00am to 9:00pm
including Bank Holidays
National Lottery Here



South East Aerial & Satellite Solutions

Digital - Freeview - Satellite - Aerials

Supply and fit of quality digital installations, FREEVIEW, SKY,
aerials, poor reception and problem solving, upgrades and
repairs by fully accredited engineers

Free quotations and advice, fixed prices, fully insured

Freeview

NO CALL-OUT CHARGE

freesat

07968 659404 - 07825168010 - 01303862361

THE COUNTRY FENCING COMPANY

Local fencing company supplying and fitting timber fencing, trellis, gates and concrete posts
for homes and businesses. We are friendly and reliable so please contact us for a free quote.

Email :- info@thecountryfencingcompany.co.uk

Website :- www.thecountryfencingcompany.co.uk Tel :- 07519 590941



COUNTRY FARE

CATERING SERVICES

Country Weddings, Christenings and All Family Gatherings, Corporate Lunches, Seasonal Parties & Celebration Cakes

Sally Burr 01303 489795 07814 610995
sallycountryfare@gmail.com

Filehurst Associates

Tel: 01303 239990 E: info@filehurst.co.uk

Domestic & Business Removals - UK & France
Long or Short Term Storage
Business Document Storage
Call now for a no obligation quote

FRESHLOOK GARDENS

Regular lawn mowing service. Garden design. Hard and soft landscaping. General garden work, fencing and decking. Turfing hedge cutting, small and medium tree work. Water features, ponds and patios.

For free quotation ring Geoffrey Hogben
01303 844 680 / 07866 091633

sales@freshlookgardens.info

www.freshlookgardens.info

Established since 1990. Fully insured.

Browns

Elham 01303 840422
Hawkinge 01303 892000

Sales
& lettings

Over 40 years of Kent village and country property

THE local and regional specialist. Why settle for less?

www.brownscountryproperty.co.uk

rightmove

onTheMarket.com

RICS

LYMINGE NEWSAGENTS

11-13 STATION ROAD, LYMINGE CT18 8HS
01303 862566

POST OFFICE, 'OFF LICENCE'
CONVENIENCE STORE

Dry Cleaning and Laundry, can deliver Papers
OPENING HOURS

7AM TO 10PM EVERY DAY

Local Tradesman

J Tappenden

Established 36 years



Painter/Decorator/Builder

01303 862467

077755 78008



Alan Croucher

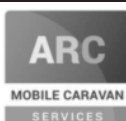
Caravan Engineer

07921 480919 - 01303 863194

Caravans & Motorhomes "WE COME TO YOU"

www.arcmobilecaravanservices.com

"Your manufacturer's warranty is safe in our hands"



Jackson Plumbing Property Maintenance

Complete bathrooms and tiling
No job too small. Special rates for OAP's.

Telephone: home/evening 01303 270691
or daytime 07773 089398 or 07864 929826

M. J. Athrow

BUILDER & DECORATOR, EST. 1965
GENERAL MAINTENANCE

Qualified and Insured. Free estimates

Telephone: 862616 Mobile: 07976 306665

Email: mick@athow.co.uk

SIX MILE GARAGE LTD

Stone Street, Stelling Minnis, Canterbury, Kent CT4 6DN

- Car and light commercial servicing
- Class 4 and 7 mots and repairs
- Car and light commercial accident repair centre (insurance approved)
- Diagnostics bay with latest equipment
- Tyre bay with four wheel alignment and balancing
- Air conditioning servicing

Tel. 01227 709214 or 01227 709491, Fax 01227 709331

E-mail: office@sixmilegarage.co.uk

Trevor Law Electrical Installations

Serving Elham Valley for 30 years
Part P Registered

01303 862348

07850 970087



J. V. Services

Servicing and Repairs:

- Garden Machinery
- Ride on Mowers
- Trailers & Horseboxes
- Quad Bikes
- Classic Cars

(Free collection and delivery)

Mobile Mechanic

Serve/Repair/Full Restoration:

- Compact Tractors
- Vintage Tractors
- Classic Tractors

Mobile: 078 0300 3047

john@jvserviceskent.com



TMA BUILDERS

Specialising in Driveways, Brickwork, Patios, Fencing, Landscape Gardening. Tree work undertaken (lopping, felling and clearing).

General household repairs, painting, plastering, power jetting & cleaning.

No job too small!!! All work guaranteed and insured.

For free advice and quotations please call: 07980114036/ 01303862361 (anytime)

