

THE LYMINGE NEWSLETTER

For the communities of LYMINGE, ETCHINGHILL, RHODES MINNIS and POSTLING

May 2017

Produced by
THE LYMINGE ASSOCIATION
www.lyminge.org.uk

News from The Lyminge Association Events around the corner ...

...the next Lyminge Association organised event is the **VILLAGE LITTER PICK** on **13 MAY**.

Living in an '**area of outstanding beauty**' it is our responsibility to maintain the countryside and our environment to the very best of our ability. Encouraging and educating our community to discard rubbish responsibly is what we are normally about, but there are times and situations where people forget resulting in an accumulation of non-biodegradable waste that needs removing.

So to that end we meet at **Lyminge Village Hall** at **10am** and do our bit to bring our village back up to scratch. We look forward to welcoming as many of you as possible to help us ...with your gloves - rubbish bags, etc will be provided.

Following on we have the **LYMINGE MIDSUMMER FESTIVAL** which this year runs from **16-26th June**. The programme is coming together with many different events to appeal to a wide range of people. However, there are two particular things we would like to share with you.

1. Building on the success of the scarecrows two years ago, we are this year promoting a **Garden Art** based on a **Fairytale/Nursery Rhyme**. This could be a tableaux in any shape or form - so now's the time to get those thinking-caps on and exercise your ingenuity!!
2. And then there's the well-renowned **Garden Safari** where people in our area kindly open their gardens for others to enjoy and marvel at!! Fran and Rod Davies coordinate this for us and they are now compiling a list of people willing to take part. They can be contacted either by phone: 01303 862598 or by email: rod_fran.davis@yahoo.co.uk. We're not looking for perfect gardens, but gardens that are inspiring in ...shape ..or plants, ..or projects ...or colour.... the list is endless; they look forward to putting together a grand list of gardens for people to visit over the weekend of **24/25 June**.

Finally, two planters have been placed alongside the bench on the main road by The New Surgery and we are very grateful to the **Lyminge Guides** who have taken over the responsibility for maintaining them on our behalf. However, there is one other sad planter that needs a keeper since their previous custodian has moved from the area - at the junction of Brady Road and Woodland Road - any takers please? Please contact either Peter (863737) or Adrian (862699).

Lyminge Bowls Club

(Woodland Road)

Bowling for all ages

Why not give it a try?

We warmly welcome beginners and experienced bowlers

We offer beginners a 6 week training course throughout May and into June on Sunday mornings at 10.00. (An alternative day could be arranged if necessary).

All equipment will be provided, just bring along flat soled shoes.

Have fun whilst keeping fit! Bowling is also a very social activity

For more information call

Wendy on **863495**, **John** on **272521** or **Bob** on **862797**

www.lymingebowlsclub.co.uk



LYMINGE PARISH CHURCH SERVICES & ACTIVITIES

Church Website: www.lymingechurch.co.uk

E-mail: office@lymingechurch.co.uk

SERVICES

Wed 3 rd May	7.30pm	Open House Bible Study & Discussion <i>coffee available from 7.20pm</i>
Sun 7 th May	8.00am 11.00am	Holy Communion WOW (Ways of Worship)
Wed 10 th May	7.30pm	Open House Bible Study & Discussion <i>coffee available from 7.20pm</i>
Sun 14 th May	8.00am 11.00am	Holy Communion Sung Eucharist
Wed 17 th May	7.30pm	Open House Bible Study & Discussion <i>coffee available from 7.20pm</i>
Sun 21 st May	Rogation Sunday 11.00am	Family Communion <i>with Children's Corner</i>
Wed 24 th May	7.30pm	Open House Bible Study & Discussion <i>coffee available from 7.20pm</i>
Thurs 25 th May	Ascension Day 7.00pm	Holy Communion
Sun 28 th May	8.00am 11.00am	Holy Communion Sung Eucharist
Wed 31 st May	7.30pm	Open House Bible Study & Discussion <i>coffee available from 7.20pm</i>

ACTIVITIES THIS MONTH

Film Night

on Thursday 4th May at 7.00pm
in the church showing
"Courageous"

Honour Begins at Home

Free Entrance – Refreshments available at a small cost

Mothers Union

on Wednesday 10th May
an afternoon outing to Lathe Barn
please contact Sue 862221 if you are interested in joining and/or need transport

Ethelburga Luncheon Club

Thursday 20th May meeting at 12.00 noon
at the Coach and Horses
please contact Lynne 863010 if you are interested in joining and/or need transport

PADDLESWORTH PARISH CHURCH SERVICES

Sun 7 th May	NO SERVICES
Sun 14 th May	9.30am Holy Communion
Sun 21 st May	Rogation Sunday 8.00am Holy Communion followed by <i>breakfast at The Cat & Custard Pot</i>
Sun 28 th May	6.00pm Evensong

FILM NIGHT

Thursday 4th May at 7.00pm
Lyminge Parish Church showing

"COURAGEOUS" – Honour Begins at Home

Entrance is **FREE** but donations to church funds will be welcome. Hot-dogs and other refreshments will be available at a small cost

LYMINGE METHODIST CHURCH

Visitors are very welcome to join us at our weekly service at **11am** and invited to share fellowship afterwards with a cup of coffee/tea.

7th May	Local arrangement
14th May	Mr Richard Blackwell
21st May	Mr Terry Preston
28th May	9.30am Valley Service at Rhodes Minnis (incl. Holy Communion)

RHODES MINNIS CHURCH

This small Chapel in beautiful countryside holds a weekly Sunday Service normally at **9.30am** followed by coffee and biscuits. A warm welcome is extended to any visitors.

7th May	3pm - Chapel Anniversary - Rev. Paul Dean (no morning service)
14th May	Mr. Ralph Bradshaw
21st May	Rev. Derek Hancock
28th May	Rev. Roger North (Valley service) incl. Holy Communion

POSTLING CHURCH SERVICES

7th May	9.30am. Family Service
14th May	No service
21st May	3pm Service for Rogation Sunday
28th May	5pm Evening Service



CHRISTIANS IN LYMINGE



12th May: Music on a Friday at the Parish Church
20th May: Saturday Morning Market in the Tayne Centre.
21st May: Rogation Benefice Walk starting at Paddlesworth and walking to Lyminge Parish Church, Postling Church and Stanford Church
Every Monday "Knit and Natter" in the Methodist Church from 2.30pm.

Lyminge Newsletter

Terms & Conditions: Copy deadline 18 May 2017

Please email your copy in to the editor (pb@pbarnes20.plus.com). Your payment must be received before your article or advert can appear in the Newsletter. Please leave your payment along with your name, organisation, telephone number and copy of your ad in a sealed envelope at the Lyminge Post Office or at the Lyminge Library. Business adverts cost £9.50 per month or £95.00 per year. Personal and charity adverts and articles from £3 per month, or £30.00 per year. The annual rate offers 12 entries for the price of 10. Please make cheques payable to '**The Lyminge Association**'. If you do not have email, a typed paper-copy can be left with the payment.

Lyminge Association accepts no liability for the accuracy of the advertisements or subsequent actions arising in conjunction with advertisers in the newsletter.

Further details from Peter (editor) on 01303 863737



BADGERS BRIDGE NURSERY

*"Bridging the indoor and outdoor learning environment
for children in their Early Year's"*

The Preschool Setting

Badgers Bridge nursery offers a smaller, calm setting environment combining Montessori principles alongside the EYFS to deliver the best start for your child. Our skilled and highly qualified practitioners will care and support your child during their time and learning at Badgers Bridge. We support the ethos of outdoor learning and are out and about in the surrounding areas as much as we can.

Forest School Wednesday's

On our own forest school site we provide an outdoor day every week. Fun at Badgers set is learning in it's most natural form. Our Forest School is a unique way of building independence, self-esteem and a positive attitude towards learning in children and young people as they explore and experience the natural world for themselves.

Flexible sessions. Free Early Education places for 2, 3 and 4 year olds. Childcare voucher schemes accepted. Places available from September 2017.

Email : badgersbridge@gmail.co.uk

Website : www.badgersbridge.co.uk

Tel : 01303 862951

Ofsted Registered : 395128

Companies House Reg : OC375571

PARISH CLERK.....

The Lyminge Association would like to express their extreme thanks to **Crispin Davies** who has recently stood down as Clerk and Responsible Financial Officer to the Lyminge Parish Council. He has been a stalwart in helping us promote the goodness and well-being of the community and we wish him well for the future.

In his place, we welcome **Lynne Martin** and wish her every success in her new role and look forward to maintaining our great working relationship.

Outdoor Theatre in Lyminge

The very popular Rude Mechanical Theatre will be coming to Tayne Field, Lyminge, again this summer. The show will be on **Sunday 30th July at 7.30pm**. You won't want to miss it if you have seen them before. They have a brand new play with live music called **'The Commercial Traveller'**. Funny, romantic and moving, it demonstrates the gritty determination to overcome an apparently unassailable problem through absolute love.

It is London, 1924, and rich and powerful tycoon and former East End barrow boy, Sir Arthur Cattermole, is not happy. His son, Gerald, whom he has spent his hard earned brass on to go to Eton, is in love with the girl next door, the beautiful Isabelle and daughter of hard up doctor, Cornelius Truss.

Love is a bunch of roses! Money is the thing!

So he sends Gerald to Africa to look after his cocoa business. The young lovers, of course, are heartbroken. The days pass like falling leaves and after a year no letters have come from Gerald. Isabelle is convinced he doesn't love her anymore, or has found someone else, so decides she will become a nun and live in Bexhill-on-Sea. But the widowed doctor's housekeeper, Elsie, who has virtually mothered Isabelle, has a plan. She knows a kind, good, gentle man, a commercial traveller, who will marry Isabelle and once married Sir Arthur will have no reason to keep Gerald away. Of course, Isabelle will have none of it at first, but Elsie persuades her mistress to trust her – that this complex knot of impossibilities will be unravelled. She will eventually be happy.

Then shockingly Elsie disappears into the London fog and is apparently found dead. Her devoted husband, Albert, Sir Arthur's butler, is devastated. A month passes and the commercial traveller, Cecil Cornford, does indeed turn up and marries Isabelle - and then, apparently too late to marry her himself, Gerald returns from Africa incognito. His letters had been intercepted and he does still love her. Albert sets about unpicking the knot and bit by bit it is unravelled.

Come dressed for an English summer! Open from 6.00pm for picnics. You will need to bring your own chairs or rugs to sit on. Tickets are available from the company's website – www.therudemechanicaltheatre.co.uk - or locally from Laing Bennett Estate Agents, Station Road, or from Mike Chisnall (01303-862743). Adults will be £16 with a range of concessions. See the website for details. For more information ring 01323-501260

OUTDOOR THEATRE with The Rude Mechanical Theatre The Commercial Traveller

*"Love is a bunch of roses!
Money is the thing!"*
Funny & romantic

TICKETS: £16 + concessions
Laing Bennett or Mike Chisnall
01303-862743
Also available online at
www.therudemechanicaltheatre.co.uk

**Tayne Field, Lyminge
Sun 30th July at 7.30pm
Picnics from 6.00pm**

Funded by The Sylvia Waddilove Foundation



Etchinghill Update May 2017

ETCHINGHILL RESIDENTS' ASSOCIATION – Dave McCombe (01303 863164)

ETCHINGHILL FUN QUIZ at the Village Hall, Saturday 6th May. Doors open at 7.00 pm for a 7.30 start. Entry is £3.00 per head, payable on the night. Tables of up to 6 people must be booked in advance with Geraldine, 07544 670363 or e-mail gpmccombe49@gmail.com. The questions have been set by the youth of the village so do come along to encourage and support them. Bring your own refreshments.

ETCHINGHILL CINEMA CLUB at the Village Hall, Monday 15th May. Doors open at 7.00 pm for 7.30. The film this month is **"THE MARTIAN"** a Fantasy/Sci-Fi (12A) starring Matt Damon, Jessica Chastain and Kristen Wiig. When astronauts blast off from the planet Mars, they leave behind Mark Watney presumed dead after a fierce storm. Open to new and existing members. The entrance fee of £5 includes admission, refreshments and a lucky draw ticket. For further details contact Lorna 863665 or visit the ERA website www.etchinghill.info

ETCHINGHILL VILLAGE SIGN. The ERA is pleased to advise that the fabrication of our new village sign, to be placed at the junction of Teddars Leas and Canterbury Road, is now complete. We are currently planning the installation of the sign and hope to notify the official opening date and celebration on posters in the area, and on the ERA website - www.etchinghill.info - within the next few weeks.

The ERA would like to thank Hester Ethell and Lynne Rogers: Hester for planting some 2000 spring bulbs last autumn. The display of spring flowers along the grass verges in Canterbury Road, looked superb. Thank you also to Lynne for providing and maintaining the planter at the junction of Teddars Leas and Canterbury Road. The efforts of our two residents have greatly enhanced the ambiance of the hamlet.

ERA WEBSITE When visiting the website - www.etchinghill.info - please always use the full address to access the site. We are getting reports of visitors reaching out of date pages and links. This is, regrettably, outside of our control and it can take some time for out of date information to be removed by search engines. Thank you.

ETCHINGHILL VILLAGE HALL – John White

VILLAGE MARKET Saturday 6th May starting at 10.00 am. Plenty of stalls selling local crafts, produce, food etc. Refreshments available.

OPEN HOUSE every Monday (except Bank Holidays) from 10.00 – 12.00. The speaker this month, on 22nd May, is Alan Taylor who will be giving a talk on "Folkestone – Then and Now". A selection of his photos, covering many decades, of the surrounding area should prove of nostalgic interest to many people. Refreshments will be available on all Mondays. We will also be organising a luncheon on the 8th May at The Bell in Hythe. Please give your names to Wendy (863495) if you would like to attend.

AGM for the Etchinghill Village Hall will be held at the Hall on Sunday 14th May 6pm. Please come along and support your Hall and your Committee and tell us what you would like to see in the year ahead. All residents of Etchinghill are welcome.

ETCHINGHILL NEIGHBOURHOOD WATCH – Jim Parris. If you would like to get Neighbourhood Watch updates and Trading Standards Alerts directly into your inbox just email Jim Parris – family.parris13@btinternet.com and you be will add the circulation list.

THE GATEKEEPER - will be having live music during May. Please see their website for more information.

To include an entry in the Etchinghill Update please contact Barbara on 862873 or barbara.newing@hotmail.co.uk

Rhodes Minnis Circle

On 19th April we had an entertaining afternoon when Eric and Steve Morris from Farthing Common Nursery brought along lovely plants to demonstrate and sell. The competition was won by Chris Marshall with Jacqui Storey 2nd, Daphne Andrews 3rd and Diana Bennett 4th. Our AGM is being held on the 17th May at 2pm followed by afternoon tea and visitors are always welcome. On Friday, June 2nd we have an outing to Folkestone Garden Centre at Densole for afternoon tea at 3pm.

Please note our June meeting will be held on the 28th June at 2.30pm, and from then on our meetings will be held on the 4th Wednesday of the month at 2.30pm.

We meet at Rhodes Minnis Village Hall & visitors are very welcome. For further details please contact **Marion Hoare (862913)**

Lyminge Weather Statistics – March 2017

With thanks to Mr D. Godden for these weather statistics and notes.

	Temperature (°C)	Air Pressure (hPa)	Wind Speed (mph)	Total Monthly Rainfall
Maximum	17.3 (15/03/17)	1020 (14-15/03/17)	Gusts 25.0 (23/03/17)	28.1mm
Minimum	1.0 (27/03/17)	971.0 (04-05/03/17)	Highest Daily Rainfall	12.0mm (05/03/17)

Just above average month for warmth, but well below average for rain.



Lyminge Dramatic Society

Thank you to everyone who supported our wonderful production of **The Vicar of Dibley**. This was a sellout production and we even had to turn people away on the door. Congratulations to Mike Chisnall (the director) and the cast for giving us such hilarious evenings.

By the time you read this we will have a new committee. Tricia Stewart will be standing down as chair and Liz Parrish is retiring from the committee after many years as secretary. We thank both Tricia and Liz for all their hard work for LDS.

"Learn from yesterday, live for today, hope for tomorrow. The important thing is not to stop questioning."

Albert Einstein

ETCHINGHILL VILLAGE MARKET

Saturday 6th May

Spring is here!!

From 10am

Local crafts, local produce, local meat

Home made jam, pies & cakes

Fresh bacon roll £1.50

Cup of tea or coffee 50p

Plenty of free parking

ETCHINGHILL VILLAGE HALL
Charity No. 302736



ETCHINGHILL RESIDENTS' ASSOCIATION



SATURDAY 6 MAY 2017

ETCHINGHILL VILLAGE HALL

Doors open at 7 for a 7.30pm start

As last year, the Fun Quiz questions will be set by village teenagers and their friends, so please join us for what is sure to be an entertaining and challenging evening

To book a table (maximum of 6 persons) please contact Geraldine McCombe, the ERA secretary, by email gpmccombe49@gmail.com or phone 07544 670363

Cost is £3pp payable on the night
Please bring your own food and refreshments

Matthew Reynolds Window Cleaning Services

More than 20 years experience in Lyminge and surrounding villages

For free estimates, please call
07975 510293

Plants for Ground Cover

Lyminge Association would like to thank the generous response by a number of the villagers for the donations of ground cover plants for the area close to the Well in Tayne Field. They will all be put to good use in the fullness of time.

Rhodes Minnis Village Hall

Got the winter blues?

Come and have an Old-Fashioned Family Fun Evening at **BEETLE DRIVE** on **Friday 26th May at 7.30pm**



Adults £2 – Children 50p



Teas, coffee and juice provided

There will also be a raffle

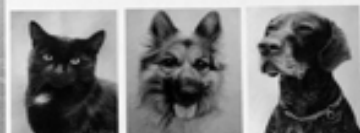
New players very welcome.



Jill Dean

Pet Portrait Artist

Pastel paintings from photos



www.deangalleries.co.uk

Jill@deangalleries.co.uk

07793 531843



Lyminge Hand Bells

The Lyminge hand bell ringers have been playing in and around Lyminge for well over 25 years. We love to attend fetes and local private celebrations throughout the year so if you think the sound of hand bells would suit a special occasion you are planning, then please contact us. We have an increasingly wide selection of music to choose from or just leave it to us. All we require at the venue is a large table for our bells and music, room for up to 11 players and a minimum donation of £40 for our current charity, the Nepali Children's Trust. A small contribution to traveling costs is also appreciated if we have to travel more than 5 miles from Lyminge. Please provide plenty of advance notice. Want more info or make a booking? Please call Ro Edmond on 863201 or email welldorm@aol.com



Tayne Centre MARKET



Church Road, Lyminge

20th May
9am - 12noon
Preserves, Cakes, Jewellery,
Bread, Pies, Books

Sausage or Bacon Rolls,
Tea and Coffee
Phone 01303 862710

Ethelburga Cottages Trust

(Registered Charity No. 224717)

The Trust currently has available a one bedroom bungalow in the centre of Lyminge.

Applications from persons wishing to be considered are invited: in accordance with the terms of the Trust, any such Applicant should be aged 60 or over and shall be husband and wife, or a single woman and will have to meet certain financial criteria.

Additionally, Applicants will have to qualify by having been resident for some time in Lyminge, Postling or Stowting and/or to demonstrate a strong connection with or allegiance to one or more of these parishes.

If you wish to be considered, please write with a stamped addressed envelope by 31st May 2017 to Mrs E Parmenter, The Old Forge Cottage, Stowing, Ashford, Kent TN25 6AY. You will be sent a letter explaining the terms of the occupancy of the property and an Application form for completion and return within 14 days. The Trustees will advise all Applicants by writing of the outcome of their applications by 30th June 2017.

ETCHINGHILL RESIDENTS' ASSOCIATION

Etchinghill Cinema Club FILM SHOW

"The Martian" ¹²
Monday, 15th May
Etchinghill Village Hall, 7 for 7.30pm
Entrance Fee £5 per head
Open to new and existing members
FREE Refreshments and Raffle



ELHAM Summer Food & Craft Festival

ELHAM VILLAGE SQUARE and Church
Sunday 4 June 12 - 3.30pm

30+ regular and new stalls selling delicious local food & gorgeous handmade gifts

Not to be missed! Dancing displays by the Pennyroyal Clog Dancers, at 12.30 & 1.30pm
Bell ringing at 11.30am
Church tower tours from 12pm
Scarecrow display and competition winners are announced
Teas, coffees, snacks from the Church Chancel Cafe
Pimms, burgers and hot dogs at The Kings Arms

We hope to see you there!

For more information:
Julie Woodgate, Elham Farmers' Market manager,
julie.woodgate@yahoo.co.uk elhamfarmersmarket.co.uk
facebook.com/elhamfarmersmarket

Raffle
Your chance to win great prizes

Browns
We are grateful to Browns Estate Agents for their support.

THANK YOU....

*I would like to thank you all for your support during my time at **Claire's Country Kitchen**. The girls will be staying on to support the new owner as they have supported me.*

I would like to thank you all for your custom, kindness, tolerating our singing, random conversations, humour, insults, laughter, and friendship.

I hope that you will all continue to support the new owner and I wish her every success.

Kindest regards **Debbie**



Jay Bee Travel

Jay Bee Travel

Days Out & Holidays leaving from Lyminge to
Canterbury

Join me along with your family and friends for a relaxing day out or tour further away both in this country or abroad. All trips and tours are in modern coaches with pick up points along the Elham Valley.

All outings & holidays are fully escorted.

For my current brochure please contact:

Jenny Barling Tel: 01303 862571

Mob: 07776 093209 Email: jennyb@vfast.co.uk

Member of the Association of Group Travel Organisers

From your District Councillor

This week I met with the Chief Constable, Alan Pughsley, who explained the new Policing Model which will be implemented from September. He was pleased to report that he is able to put more Police Officers' on the front line and will also be able to retain 300 PCSO's. 210 will be dedicated to community policing and 90 dedicated to proactive work in communities to reduce harm to potentially vulnerable people. He would like to set-up a pilot scheme for Volunteer PCSO's who would increase this number and invites applications from local residents who are keen to support their area. (If you are interested, please let me know and I will pass details on). The 'on-going' issue of lorries parking illegally was discussed. The Police are moving lorries on, mostly from the slip roads but they will also move them on from residential areas. I recently went out with the Enforcement Officers and 8 Fixed Penalty Notices were issued in an hour around J11 and the A20.

By the time you read this, we will know the result of the retrospective planning application for change of use of Otterpool Quarry to a 24-hour lorry park. The Shepway Planning Officers have recommended that this be refused by the councillors at their meeting on 25 April. They also recommend that councillors agree that enforcement action be taken to stop the present activity.

I reported last month that a leaflet entitled "Your Questions Answered" on Otterpool Park would be delivered to all residents in Shepway. Delivery stopped on 24 March because of the KCC election campaign during which both the District and County Councils follow strict rules about publications. However, the booklet and the Stage 1 Arcadis Stage 1 Feasibility Report can be viewed on line at www.shepway.gov.uk/Otterpool. Further Community Engagement Sessions are postponed because of 'purdah' rules following the announcement of the General Election. Other Work Shops are planned with the Business Community and local Schools.

I attended the recent meeting of the Age UK Hythe & Lyminge Trustees and they are keen to expand their Home Delivery Meal Service (£6.90 per meal 7 days per week) and their "in-house" meals (£5.25 per meal 5 days per week). Meals can be for one day, or any number of days. A range of other services are provided, see www.age.uk.org Hythe and Lyminge 01303 269602. Volunteers are also needed so if you have a few hours to spare to help others, the Lyminge & Hythe Centres would love to hear from you.

As I am sure you will know, Shepway Councillors voted against moving forward with the proposal to create a new council for East Kent. This means that none of the councils involved can proceed with the idea but does not rule out working together as separate councils where it might save money or give a better service through economies of scale.

Jenny Hollingsbee (Jenny.hollingsbee@shepway.gov.uk 07887918458) - ward councillor, North Downs West, Shepway DC

Things-To-Do in May to Get Your Garden Ready for the Garden Safari, 24th & 25th June

- phone 862598 to enter your garden

In the flower garden

- Thin out drifts of hardy annuals.
- Harden off half-hardy plants by leaving them outside during the day and bringing back under cover at night
- You can still divide herbaceous perennials
- Divide Hostas as they come into growth
- Trim back spreading plants such as aubrieta, alyssum and candytuft after they have flowered
- Don't be tempted to cut down or tie up the foliage of spring-flowering bulbs, let them die down naturally.
- To reduce the spread of forget-me-not, lift the plants now to prevent heavy self-seeding.
- Prune your Penstemons now - cut all the old shoots back to the base provided there is new growth at the bottom of the plant. If there are no new shoots at the base, cut just above the lowest set of leaves.
- Take cuttings of tender perennials such as Fuchsia and Pelargoniums (geraniums).
- Take softwood cuttings of shrubby herbs (such as sage)
- Prune out overcrowded and dead stems of early-flowering clematis after flowering.
- Tie in climbing and rambling roses.
- Tie in your sweet peas with plant support rings to encourage them to climb.
- Prune spring-flowering shrubs after flowering.
- Cut back flowered shoots of Choisya
- Feed and water container plants.
- Top-dress permanent pot plants to refresh the compost.

- Give your container plants a balanced liquid feed every two to four weeks to promote healthy growth.
- Plant up pots and baskets of summer bedding and harden off before placing in position.
- Start to inspect your plants for pests and diseases
- Pick off larvae of rosemary, viburnum and lily beetles as soon as they are seen.
- Look out for signs of blackspot on roses and treat with a systemic fungicide.
- Continue to weed beds and borders to prevent competition for water and nutrients.

In the vegetable garden

- Continue earthing-up potatoes.
- Harvest rhubarb, picking only a third of the total amount
- Thin out direct-sown vegetables such as spinach, carrot and lettuce seedlings then water the rows well.
- Harden off outdoor tomatoes, courgettes and pumpkins
- Plant out brassicas and leeks to their final positions.
- Protect crops from carrot fly
- Pinch out the growing points of broad beans as soon as beans start to appear at the base of the plant to reduce the risk of blackfly attack.
- Weed around your onions and garlic to reduce competition for nutrients and water.
- Support your pea plants with twiggy sticks or pea netting.
- Be vigilant with weeding - weeds will compete for precious water, light and nutrients.

Looking after your lawn

- Now is a great time to apply lawn weedkiller
- Feed your lawn with a high nitrogen fertiliser
- Water your lawn during hot weather, particularly newly seeded or turfed lawns.

Courtesy of Thompson and Morgan

As May approaches, we are looking forward to the summer which means "holidays". Matthew has planned the next client holiday which will depart on Monday 23rd October for four nights in the Peak District. Accommodation will be at the Derby Midland Hotel and there will be excursions to Chatsworth House, home to the Duke and Duchess of Devonshire, the National Tramway Museum at Crich, trips to Buxton and Glossop and a scenic drive along Snakes Pass followed by afternoon tea. The cost is £299 per person for a standard double or twin room and £339 for a standard single room. Bookings are now being taken so to reserve your place as soon as possible to avoid disappointment, please pop into the Centre to complete the necessary paperwork and to pay a £75 deposit.

We operate a 100 club and new members are always very welcome. The cost is £12 per number per year. There are 12 draws a year with prize money of £25, £15 and £10, with prizes doubling in December. Fundraising in this way is beneficial to everyone and we are very grateful to anyone who wishes to take part. Application forms for numbers are available at the Centre or can be requested by email to mfo@ageukhl.org.uk

We shall be holding a plant sale from 9.30am on the morning of Saturday 13th May at our Centre in Stade Street in Hythe. There will be a wide variety of plants available – bedding, hanging basket plants and an assortment of others – all at very reasonable prices. We shall also be serving hot and cold drinks and an excellent choice of refreshments. It would be lovely to see you there.

The Lyminge Centre will be closed on 1st and 29th May as these are both Bank Holidays but otherwise, why not pop in to try out our lovely scones and sausage rolls with a hot drink in our Conservatory Café? Free WiFi is now available during our opening hours of 8.45am – 4.00pm.

For all information regarding our services, activities and events please pop in to the Centre and speak to Matthew or Rachel or email to Susan at mfo@ageukhl.org.uk or phone 01303 269602.

Lyminge Village Hall

AGM

**Tuesday 13th June 7.30pm
Harry Storey Room**

All are welcome to come and ask any questions and find out how your hall is being run.

It is run by volunteers on behalf of the community and if you would like to join our team, there will be an opportunity for you to find out more during the meeting.

Tea and biscuits to follow!

"One important key to success is self-confidence. An important key to self-confidence is preparation."

Arthur Ashe

Rhodes Minnis Cat Sanctuary

Registered Charity 262245

Seathwaite, Green Lane, Rhodes Minnis,
Canterbury CT4 6XU
Email: rminniscats@gmail.com

Plant and Produce Fair

**Sunday 28th May
10am - 1pm**

A variety of interesting home grown plants, homemade cakes and jams on sale.

Bring and Buy welcome.

Refreshments available all morning.

All money raised to benefit the cats in our care; do come and join our members and sponsors and meet them all.

Rhodes Minnis Inter.n...e...t zzzzzzz!!

- Do you struggle to get a serviceable download speed on your Internet?
- Does BT fob you off with excuses?
- Does Openreach fail to live up to its name in our area?

If the answer is 'YES' and are of a like mind, then perhaps we could link together and try to exert some group pressure on BT to improve our Internet service.

Please contact me: Gerald Horn 862406 or if you dare risk it try email: geraldhorn77@gmail.com



**07929 627622 • 07769 908027
OLLIE@ASHTONTREECARE.CO.UK**

**City & Guilds
NPTC**

**ALL WORK FULLY INSURED
HEDGE CUTTING • STUMP GRINDING • TREE SURGERY**

Do YOU have Website Design Skills.....????

Since its launch six years ago, we have enjoyed the support of Red Dragon and in particular, Andy Silwood, in running and hosting the Lyminge Association website - <http://www.lyminge.org.uk>. They have been an immense help but it is now looking a little tired and needs a spring clean.

Importantly, during this time we have been up and running the software that supports websites has changed considerably now allowing the owners to make alterations independently and very easily when the need arises. This is something critical for a successful website since we are very aware of the need to keep news and information current and fresh.

To that end, we plan to put together a new website and are looking for a person to take responsibility for doing this for us using either WIX or another package, on a voluntary/pro bono basis.

We hope this will attract somebody looking to work up their portfolio or has the skill set to help us in this project and would like the chance to put this site on the map - some village websites are dire and this provides an opportunity for the Lyminge Association to set a very high standard. Once set up, we would not expect the author to maintain the site since we would then take over the responsibility of updating it on a needs basis.

So, if you have the skill and time (its not a big and complex site) and would like to make full use of this opportunity, then please contact the editor of the newsletter, **Peter Barnes** at pb@pbarnes20.plus.com or **01303 863737**.



A chance to make a difference....

1st Lyminge Scout HQ, next to the Lyminge Village Hall, has recently undergone some renovations to create a more hospitable meeting place and are currently in the throes of creating a smaller meeting room within the building for smaller groups to meet and for training. With Alan Croucher taking over as Group Scout Leader, they are looking for people in the area to help them with all-manner of tasks.....

- **Can you organise fundraising events that inspire the whole family?** Could you help us to organise four small events a year? We need you to help our fundraising team to stage fun and family friendly events that can raise funds for our Group. Every penny we raise is used to support children, so whether it's bingo or a barn dance the choice is yours!
- **Can you help keep our meeting place comfortable and safe?** Could you help us to repair and maintain our Scout Headquarters? We need you to help our maintenance team to keep our Headquarters in good condition. Getting together four times a year this will enable the children to meet in a warm and dry environment!
- **Are you good at keeping records and accounts - making sure things are just right?** Could you help us with our accounting and become our treasurer? We need you to help our executive committee manage funds for the Scout Group. With just four fun meetings a year to support the committee with reporting. We can show you everything you need to know!
- **Can you speak easily to others and encourage family involvement?** Could you be the Beaver, Cub or Scout Parent Representative? Represent the children, parents and carers at just four fun meetings a year, help keep everyone informed and share ideas and information?

Interested? Then please contact: Alan Croucher alancroucher3@gmail.com or Emma Harvey emmah@gmx.com

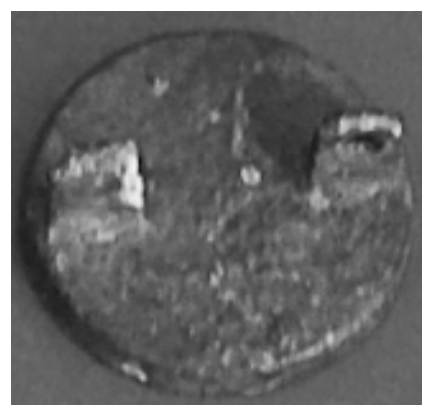
Found - a Button Brooch - but nothing that ordinary!!

Were you perambulating through Lyminge sometime during the sixth century? Did you snag your clothing and lose a button brooch? If not you, then someone did, because Vanessa Carr dug one up in her garden.



Dating back to the same period as the royal hall, recently the subject of an archaeological dig on Tayne Field, the brooch seen here on the right also illustrates how the hasp on the reverse of the button brooch, was broken and possibly caused the loss. A very similar brooch was found on Tayne Field during the dig, in 2015.

Vanessa has reported the find to KCC Heritage Conservation and it is now being registered at Maidstone. Made from a copper-alloy, which was then gilded, it is a fascinating find.



LITTER PICK - 13th May 10.00am - meet Lyminge Village Hall Car Park

Coach & Horses

Senior Citizens 2 course lunches

Available Monday - Saturday £7.50

Friday Food Theme Nights

5th May - Mexican
12th May - Italian
19th May - Indian
26th May - Polish



Quiz Night Wednesday 31st May

Saturday 27th May

Live Music with *The Elbeats* from 8.30pm

More information regarding opening times available at the pub or via Facebook page

Bookings and Contact: 01303 862694

CANTORES

- *your local choir*

Charity no: 1087409

DATES FOR YOUR DIARY

JOINT CONCERT

with **Kingsley Choral Group (Dagenham)**

Saturday 17 June, 4 to 6 pm

Holy Trinity Church, Folkestone

LYMINGE PROM CONCERT

Saturday 8 July at 7 pm

Lyminge Village Hall

COFFEE CONCERT

Saturday 4 November, 10.15 for 11 am

Lyminge Methodist Church

AN EVENING OF CHRISTMAS MUSIC

Friday 15 December and Wednesday 20 December at 7.30 pm

Sibton Park

Look out for further information on all our events

www.cantoresdominicae.co.uk



Christian Aid Week' will run from 14th to 20th May this year. Collectors will be coming to your door in most roads in Lyminge. Please give generously, as you always do (as a village we made approximately £1,200 last year). Christian Aid has been there for the poor and disadvantaged since 1945, and is needed more than ever at this point in time, with so many displaced people finding themselves in miserable and abject conditions. If you are able to fill in the Gift Aid form on the inside flap of the envelope, this will increase your donation by 25%. If you feel that you could collect for this worthy charity, please give me a ring on the telephone number provided. There are several small roads as well as the longer ones! Thank you. *Norah Chinneck, Lanfranc, High Street, Lyminge 01303 863911*



*Lyminge
Historical Society*



The next talks in 2017 will be as below:

Tuesday 6th June, at 7.30pm in the Tayne Centre

The Making of the Kingdom of Kent

Speaker: Dr. Andrew Richardson

(Canterbury Archaeological Trust)

Please note the following:

The Summer Outing will be a trip to tour the Shepherd Neame Brewery in Faversham on Wednesday 12th July at 10.45am.

Tasting optional! Cost £10.95 per person

Places available, booking & payment at 2nd May meeting

New members and visitors are welcome.

Members: £10 per annum inclusive of talks

Visitors: £4 per person payable on the door.

Tea and biscuits will be served.

Please note: Lyminge a history part 8 can be purchased through the shops at £7.00. Alternatively, all 8 books can now be purchased as a bundle at an offer price of £37.00 *

To take advantage of the offer please call 01303 862865

This bundle offer is not available from the shops.

*Postage and packaging extra for postal deliveries

Lyminge Historical Society

Mobile Tel. No. 07759 260816

Website: www.lymingehistoricalsociety.co.uk

New Mindfulness and Guided Meditation Class

Mindfulness and Meditation are amazing ways to help you relieve stress and anxiety and are powerful self-management tools.

Classes are taught by qualified practitioners at the

Tayne Centre, Lyminge

7.30 – 8.30pm

9th May and 23rd May

Class costs £5 per person

For more information please contact Claire Norman on

01303 863508 or email Claire@dcbreathe.com

or follow us on Facebook *Mindfulness for everyday life* or

see what else we offer at www.dcbreathe.co.uk

Claire's Country Kitchen

Following our refurbishment, we will be reopening in May under a new name:

THE COFFEE CABIN.

We look forward to seeing you very soon.

MUSIC ON A FRIDAY

invites you to join us for our next concert

12TH MAY 2017 at 7.30pm

LYMINGE PARISH CHURCH

FREE entrance FREE wine FREE cheese & biscuits

All types of music, so something for everyone do join us, we would love to see you



Lyminge Gardeners' Society

Tuesday 16th May

EVENING OUTING TO 'WESTGATE GARDENS'

'Guided tour followed by refreshments'

Members £5.00, Non Members £7.00, to include refreshments

Meet at Lyminge car park at 6pm. Lifts available

Followed by

COACH OUTING TO PASHLEY MANOR ROSE WEEK Tuesday 13th June

£20 Members, £30 Non-Members

We will also be visiting Merriments Nursery

Places can be booked at Age UK Lyminge or via
Veronica 01303 862264



Preparations for the season have gone well with the ground looking in great shape despite the lack of rain. During the season the bar is open from 2pm on match days and all are welcome.

Kwik cricket sessions open to boys and girls of primary school age will begin on Monday 8th May from 5:30-6:30pm. Colts training (ages 11-15) will also be running on Sunday mornings from 9:00-10:00am beginning 7th May. For more information or to register interest please contact Steven using the contact details below.

Diary Dates May 2017:

Sat 6th May: 2nd XI v Old Elthamians

Sat 13th May: 1st XI v Broadstairs

Sat 20th May 1st XI v Folkestone

Sat 27th May 2nd XI v Downham & Bellingham

The clubhouse and grounds are available to hire for regular events, private functions and marquee weddings. We offer a fully licensed bar at club prices and very competitive hire rates. For further information or to make a booking please contact **Adrienne** on **07545 280342** or **Steven** on **07545 780794** email **age-rowey@hotmail.co.uk**

Letters to The Editor.....

Theft....The PCC and congregation of the Parish Church were saddened and disappointed that someone felt the need to steal a fairly large bunch of flowers, purchased to decorate the Church for Easter, from the church on the late afternoon of Maundy Thursday. As most residents of the parish will know, the Church is protected by CCTV and pictures of the man responsible for the theft have been sent to the relevant authorities.

Otterpool... A letter has been received by The Lyminge Newsletter relating to Otterpool Development. However, because of the 'purdah' rules following the forthcoming local and General Election the Editor has chosen to withdraw it from the May and June editions.

FAMILY HISTORY **Interested in your ancestry?**

Lacking the time or expertise to research it yourself? Then give me a call, or email me, to arrange a free, no obligation, initial chat.

Research is undertaken at very affordable rates to suit your pocket.

Clive Stanyon: 01303 840820 07771 922192

stanyonc@aol.com

Financial Planning

David Gridley - Chartered Financial Planner

Range of quality advice from a fully qualified adviser:

- Pre- and Post-Retirement Planning
- Investment Planning
- Inheritance Tax Planning

For further information, please contact our Lyminge office

David Gridley APFS

Tel: 01303 863959 Email: davidgridley@sjpp.co.uk



Tractors, Tanks & Tiger Moths

June 24th & 25th
10am – 4pm

Pent Farm, Postling, Hythe CT21 4EY

Fun for all the family:

Aircraft, Vintage tractors, Farm Animals

Military vehicles, Stalls, Food,

Fairground rides & lots more

£5 entry/adult

All in aid of Pilgrim's Hospice and other charities

Lyminge Friends - May 2017

In April, Don Wilks gave an illustrated talk on *Bluebells, Butterflies and Beasts* which everyone enjoyed. On Easter Monday we had a lovely lunch in the Coach & Horses.

Forthcoming events include Wednesday 3rd May when we welcome Toni Mount and her presentation entitled *Medieval Housewives* while on Wednesday 17th we will have a 'car share' trip to Sissinghurst.

On Wednesday 7th June we are joined by Colin Coe who will talk about some *Aspects of Life in Kent* followed by lunch in Brockhill Country Park Café. Then on Wednesday 21st we will have a 'car share' trip over to Deal with fish and chips meal.

Guests and non-members are welcome but please call 862015 first since lunches or cream teas places must be pre-booked and paid for.

Meetings are 10.30 - 12.30 in the Rigden Room of the Tayne Centre.

Entry for 2017 is £3.00 which includes light refreshments. We are a friendly social group and welcome new members so just drop into one of our meetings, or, if you'd like to talk to one of us first, please call 863500.



In aid of the LORD WHISKY SANCTUARY FUND

(Registered Charity 283483)
Park House, Stelling Minnis CT4 6AN.
Tel: 01303 862622 Fax: 01303863007

Website: www.lordwhisky.co.uk ~ Email lord.whisky@btinternet.com

Family Fun Day & Boot Fair

Saturday 6th May at Park House

Boots from 8am (cars £6.50 / vans £10)

Entertainment from 12noon

Hythe Town Concert Band ~ Sheep Shearing

~ Classic Cars & Motorbikes

Owls ~ Pony Rides ~ Lil' Riders Pony Cycles

'Culinary Duel', a dance theatre performance in association with Applause Outdoors, Bouncy Castle, Face Painting, Tombolas, Raffles & much more! Hot & Cold Refreshments

Admission by donation - Ample free parking

8th Annual Cyclo-Sportive

Bank Holiday Monday 29th May, from 9am at Park House

Entry £20 in advance or £25 on the day.

Choose from 50 or 72 mile routes on the quiet roads of the Kent Downs and Romney Marsh.

For further details and an entry form, visit our website or email nickracingsnake@btinternet.com

Railway Museum



Countryside & Craft Centre

The Museum, Countryside and Craft Centre is open every weekend and Bank Holiday until the end of November. The next event is the Military Weekend on 13th & 14th May.

For other events planned see -

www.elhamvalleylinetrust.org,

www.facebook.com/ElhamValleyLineTrust Official or Tel: 01303273014

Regular Activities - Art & Nature Club on 1st Saturday or each month.

Lyminge Bumpy Field Gang (Court Lodge Green)

Come and join our growing gang of friendly volunteers. We meet once a month, on the second Thursday of every month at 10.30am for approximately an hour and a half, at the Village Hall car park next to the field. We are trying to support the natural habitat by creating biodiversity for plants and animals and to make the field suitable for the community to enjoy. If you would like to help in one of these practical sessions, please come along and lend a hand. You do not have to commit to this every month and work at your own pace.



Please note that the ground is uneven so wear good footwear and clothes that cover your skin as there are nettles etc. Bring garden gloves if you have a pair. This project is not suitable for children.

If you want further information please contact: Audrey 864235 or abailey447@aol.com

Lyminge Bowls Club

Would you like to learn to bowl? On Sunday mornings throughout May and into June we will be coaching new bowlers in the delights of the game. Come along and give it a try. (Another day could be arranged if necessary.) All you need to bring along are flat-soled shoes. Call 863495 for further information.

All welcome to come along and watch home matches, which for May are as follows:-

Saturday 6 May 2.30pm	A Club competition - the Webb Trophy
Sunday 7 May 2.30pm	A mixed game with members from River
Saturday 13 May 10.00am	An all day Club competition - the Wright Shield
Sunday 14 May 2.30pm	Members of Birchington Bowls Club pay us a visit
Tuesday 16 May 2.30pm	Ladies from River play against our ladies
Thursday 18 May 2.30pm	We have a game with a touring team from St Chads
Sunday 21 May 2.30pm	Bowlers from Ashford Rail will be with us
Tuesday 23 May 2.30pm	The ladies have a game against Wear Bay ladies
Thursday 25 May 2.30pm	Ladies and Gents from Sellindge come to play
Saturday 27 May 2.30pm	The green will be full of players from Whitstable
Monday 29 May 9.30am	Our all day OPEN MIXED TRIPLES Competition

Rhodes Minnis Toddler Group

Coffee Morning

Rhodes Minnis Village Hall

Thursday 18th May

10.30am - 12noon

Sales - cakes and raffles

Come and have a coffee and watch us play
Everyone Welcome

Park House Sanctuary Boarding Kennels & Cattery

Park House, Stelling Minnis CT4 6AN
Brick-Built Heated Kennels ~ Daily Walks
Reasonable Rates ~ Dogs must be fully inoculated
Heated Cat Chalets ~ Quiet Area Inspection Invited.
To book or for further information, call
01303 862622 or email lord.whisky@btinternet.com
www.lordwhisky.co.uk

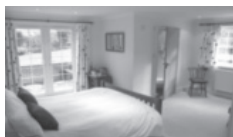
Technical Help When You Need It!

Gadget setup Internet help and training
Purchase advice Security concerns (parental advice)
Help with email TV remotes and tuning PC & Mac
For all those little problems you want to sort.

Call Nigel on 01303 647220 or email
nigel@digitaldoctor.me

Experienced and qualified, 20 years in IT. Excellent rates.

Bridge Cottage Bed & Breakfast 4 Stars Silver Award



Luxury accommodation in a tranquil setting
Chris & Alison, Shuttlesfield Lane, Ottinge
01303 862933 www.bridgecottagesimplybandb.co.uk

Help your child go far with Kip McGrath

Our qualified teachers create individual
tutoring programmes for your child, using
proven Kip McGrath methods.

✓ Maths ✓ GCSE Maths specialist
✓ English ✓ 11 Plus

Call today
for a FREE
assessment

kipmcgrath.co.uk

Ofsted
Registered

Folkestone & Hythe Centre
17, Manor Road, Folkestone, CT20 2SA
01303 249 100
folkestonehythe@kip-mcgrath.com

Kip McGrath
EDUCATION CENTRES

Cambridge Weight Plan™ Independent Consultant

Anita Adams - Etchinghill

Get back in the picture! With one-to-one support, you can
trust Cambridge Weight Plan.

Call me today for more information about the plan. I can
help you all the way!

Tel: 01303 864254 / 07851614867

Email: anitaadams@live.co.uk

Facebook: [cambridgeweightplanconsultantsoutheastanita](https://www.facebook.com/cambridgeweightplanconsultantsoutheastanita)

Andy Mannering Flooring

SPECIALISING IN AMTICO AND KARNDEAN
LUXURY VINYL TILES

- Also safety flooring, rubber flooring, etc.
- Commercial and domestic work undertaken
- No job too small
- Free estimates and advice given
- Over 35 years experience
- Fully insured



Telephone: 0797 434 7248 or 01303 863095

Email: info@andymanneringflooring.com

Please visit my website for further information and
feedback www.andymanneringflooring.com

Tressenden Designs

A seamstress and costume maker with 8 years of experience.

- Clothing alterations
- Repair work undertaken
- Made-to-measure; create a bespoke piece for
those special occasions
- Modern and vintage designs
- Costumes, ball gowns and wedding dresses



For more information or a quote please contact Amy on:

Mobile: 07853 202304 **Email:** amy.louise.ford@hotmail.co.uk

*"Thousands of candles can be lit from a single candle,
and the life of the candle will not be shortened.
Happiness never decreases by being shared."*

Buddha

RECRUITING NOW



Would you like a flexible, rewarding career in care?
Are you looking for full time hours? Part time work to fit in
around your lifestyle? or to hours top up your weekly income?

Benefits of working in Homecare with Nurse Plus-

Flexible Hours – at times to suit your needs

Excellent Weekly Pay - up to £10.37 per hour, plus holiday pay

Rewarding career – job satisfaction

No experience needed – Start a new career

Free Training – Qualification opportunities

Staff Benefits - Staff Lottery & Plus Points Scheme

Call Nurse Plus today: 01303 250200

www.nurseplusuk.com homecare@nurseplusuk.com

Shuttlesfield Barn - 4* Gold - Self Catering



Rural location in Kent's AONB
Families and all pets welcome.
Two bedrooms, ensuite shower
and wet-room. WiFi. TV/DVD.
Holiday, short & relocation stays.
Heated outdoor pool (Summer)
CT18 8LB 01303 862729
Web: www.shuttlesfieldbarn.co.uk
Email: info@shuttlesfieldbarn.co.uk





Daisychain Courses™

* Baby Massage * Baby Signing *
* Infant Sleep *
* Feel a Fairy Tale™ *

www.daisychaincourses.co.uk
info@daisychaincourses.co.uk
07800 737 936

Etchinghill

Baby & Toddler Group

We are a friendly toddler group, which caters for babies and children from 0 to school age. Crafts, messy play, trikes, toys and a singing session are included each week. In dry weather there is also outside access for the children to play.

We meet on Wednesdays between 10am -12noon at Etchinghill Village Hall. We charge £2 per family, 1st session is free. Tea/coffee and healthy snacks are provided. If you have any queries please contact

Julia Tesoro 07809705309

Lyminge Baby and Toddler Group

We'd love you to bring your little ones along to our informal and friendly group for lots of fun. Come along and join us for craft, singing and lots more. We meet every Tuesday morning at the Tayne Centre 10.00-12.00, term time only. Cost: £2.00 per session, including refreshments for all.

Call: Any enquiries – **Jenny 0756 4130569**
Sarah 0798 4939220.

E-mail: **lymingetoddlergroup@yahoo.co.uk**

Rhodes Minnis Toddler Group



We are a small friendly group who meet on Thursday mornings (term-time) 10am-12 noon in Rhodes Minnis Village Hall. First morning is free.

We have a good selection of toys and craft, dough, books and puzzles. Refreshments provided for everyone.

For more information phone **Elaine on 01303 863096**

Lyminge Library Opening Times

Monday	2 - 5pm	Tel: 03000413131 lymingelibrary@kent.gov.uk
Tuesday	9 - 12noon	
Wednesday	Closed	
Thursday	9 - 6pm	
Friday	9 - 12noon	
Saturday	10 - 2pm	



Lyminge Pre-School



'OUTSTANDING – in EVERY CATEGORY'
Ofsted 2016

We are now open between 8am and 6pm
ALL YEAR ROUND

We are a well established pre-school with committed, enthusiastic and highly qualified staff passionate about providing the highest standards of childcare.

To arrange to meet the team, please call:
01303 863149 (day) or 07709420736 (eve) or email
lymingepreschool@gmail.com and visit our website
www.lymingepreschool.org.uk

Looking for homecare services?

Our experienced Care Assistants are on hand to offer support to the elderly, people with a learning or physical disability or other care needs for home services no matter your needs -

- ✓ One call a day to multiple calls
- ✓ Short term or long term packages
- ✓ Home from hospital assistance
- ✓ General assistance or complex care
- ✓ Weekday, weekends, days, night call times



Contact your local branch today
01303 250200
www.nurseplusuk.com



PIANO LESSONS FOR ADULTS

Have you always wanted to learn to play the piano but have lacked the opportunity, or faith in your own ability? Did you learn as a child and now regret having given it up?

I specialise in teaching adults and have developed a method which will enable you to progress quickly and with great enjoyment.

Please contact: Lise Cribbin, Bridge 01227 637709



Adult Swimming with Hythe Aqua

- Can you swim lengths (25m)?
- Are you between 17yrs and 70yrs+++++
- Do want to improve your swimming skills?
- Do you want to improve your fitness?

We can help you improve under the direction of our experienced Swimming Coaches. You may want to simply improve your swimming skills and fitness, or even take part in competitions such as Masters Swimming, Triathlons or Open Water – we can help.

Two sessions available each week, starting session Fridays at 8.00pm – Hythe Pool.

To book your place phone: 01303 862353 or checkout our website: **www.hytheaqua.org.uk**

Rhodes Minnis Village Hall

Charity No.800345

Rhodes Minnis Village Hall is located 2kms (1¼miles) from Lyminge and just off Longage Hill and Whitehorse Lane in Chapel Lane

The hall, which holds Hallmark accreditation, is ideal for children's parties, band practice, quizzes, meetings and fundraising events and has the capacity to take parties of up to 100. The rates include the use of the kitchen.

Rates

Mon to Fri £15 per session £40 all day
Sat & Sun £20 per session
£30 for evening session and £60 all day

Sessions

AM session 08.30 - 12.30
PM session 13.30 - 17.30
Evening session 18.00 - 23.45

There are special rates for regular users.

For all bookings and enquiries please contact:

Martin Fry 01303 863177 e-mail: book @rmvh.org.uk

Sibton Park Cricket Club

We extend an invitation to our local residents, please join us on match days and selected evenings and take advantage of the Club's outstanding venue, facilities and fully licensed bar.

Having a Celebration? Require a regular venue?

The club house and grounds are available

For further information or to make a booking

please contact: Adrienne and Steven Rowe
07545 280342 - age-rowe@hotmail.co.uk



bus times

for buses from Lyminge Post Office to

Folkestone town centre via Etchinghill & Cheriton High Street

MONDAYS TO SATURDAYS except Bank Holidays

There are route 17 buses at 0705 (not Saturdays), 0749, 0909, 0934 (not Saturdays), 1004, 1034, 1104, 1204, 1304, 1404, 1514, 1614, 1619 (schooldays only), 1654 (schooldays only), 1719, 1749, 1834, 1929, 2113 and 2313.

There are also route 18 buses to Sandling Station & Hythe - for times see our website or call the number below.

SUNDAYS & BANK HOLIDAYS

There are route 17 buses at 0947, 1147, 1347, 1547, 1802 and 2002.

for buses from Lyminge (opposite Aberdeen House) to

Canterbury city centre via Elham, Barham & Bridge

MONDAYS TO SATURDAYS except Bank Holidays

There are route 17 buses at 0727 (schooldays only), 0732, 0752, 0903, 0938, 1028, 1128, 1228, 1328, 1443, 1613, 1703, 1803, 2001 and 2201.

There are also route 18 buses to Canterbury via Stelling Minnis and Bossingham - for times see our website or call the number below.

SUNDAYS & BANK HOLIDAYS

There are route 17 buses at 0827, 1027, 1227, 1427, 1642 and 1842.

These times will operate from 3 April 2017.

timetable information **0871 200 22 33**

Calls cost 12p per minute plus your phone company's access charge

www.stagecoachbus.com



Lyminge Village Hall

Registered charity 28145

Large, refurbished, flexible hall with great facilities

From Theatre productions to Weddings, Craft Fayres to Childrens' parties - we've got it all covered!

Capacity: 200 people dancing / audience seating,
100 for table seating, 50 or less for meetings

Well equipped: stage, kitchen, small rooms, ample parking facilities, disabled access

Access to: playground, skate park, large playing field &

Situation: Rolling hills behind and the Church to the front.

Find out how we can help you with your next event:

BOOKING LINE: 07497625 741

EMAIL: Lymingevillagehall.org.uk

Guideline prices

MAIN HALL HIRE ~ Fri, Sat PM £65

SMALL ROOM ~ £20

EXCLUSIVE ALL HALL ~ £320



Find us on Facebook
or follow us on Twitter @ Lymingevhall



ETCHINGHILL VILLAGE HALL HIRE FEES

The next time you are thinking of holding a function why not try Etchinghill Village Hall, which holds the highest Hallmark accreditation level (Hallmark 3), with its excellent facilities, including ample parking space. The standard hire charge for the main hall and kitchen are:

Weekdays £11.00 per hour

Saturdays £13.00 per hour

Sundays £13.00 per hour

During the winter months (1 November to 31 March) a Winter Supplement of £1.00 per hour is added to the above rates.

Special rates apply for Weddings and all day events with discounts on the above rates applying to Etchinghill Residents and Regular Hirers.

The use of a separate Committee Room is also available.

For all bookings or enquiries please contact:

The Duty Manager on 07514-758936

TAYNE CENTRE HALL HIRE

Previously known as the Lyminge Methodist Church Hall



Clayson Hall

1 October to 31 May (including heating) £9.50 per hour :

£34.00 per 4 hour session : £66.00 full day

1 June to 30 September

£7 per hour : £25.00 per 4 hour session : £4.00 full day

Rigden Room (Parlour) with heating, if required*

£7 per hour all year (*electric - over heaters).

Burren Room - storage only

Overnight Stays

1 June to 30 September £50; 1 October to 31 May £60

For any enquiries please call **07971 722 401**

This page is printed to give readers and organisers the opportunity of planning events without clashing with existing ones, which are already in the 'diary'. It is not intended as a means of advertising and we take no responsibility for errors or omissions. Acceptance is at the discretion of the editor. Please send your updates by email to pb@pbarnes20.plus.com or via methods outlined on Page 2.

Location and name codes follow:

C&H: Coach & Horses; **ECC:** Etchinghill Cricket Club; **EVH:** Etchinghill Village Hall; **ERA:** Etchinghill Residents' Association; **ES:** Elham Square; **JC:** Jubilee Centre; **JF:** Jubilee Field; **LB:** Laing Bennett; **LBC:** Bowls Club; **LL:** Library; **LMC:** Lyminge Methodist Church; **LPC:** Lyminge Parish Church; **LSH:** Lyminge School Hall; **LVH:** Lyminge Village Hall; **LW:** Lord Whisky; **NVH:** Newington Village Hall; **PC:** Postling Church; **PH:** Lord Whisky, Park Hse. **PVH:** Postling Village Hall; **RVH:** Rhodes Minnis Village Hall; **RMC:** Rhodes Minnis Church; **SNL:** See News Letter for info; **TC:** Tayne Centre.

One-Off or Irregular Events

Date	Time	Event	Where	Tel. No.	Date	Time	Event	Where	Tel. No.
4 May	7pm	Film - "Courageous"	LPC		16-26th June		LYMINGE MIDSUMMER FESTIVAL		863737
6 May	7.30pm	Fun Quiz	EVH	863164	24-25th June		GARDEN SAFARI		862598
13 May	10am	Lyminge LITTER PICK	LVH		24-26th June		Flower Festival	LPC	
13 May		Etchinghill Boot Fair	ECC		24-25 June	10am	Tractors, Tanks & Tiger Moths	Postling	
13 May	10.30am	Coffee Morning	RMVH		8 July		Etchinghill Boot Fair	ECC	
27 May		Etchinghill Boot Fair	ECC		8 July	7pm	Lyminge Prom Concert	LVH	
28 May	10am	Plant and Produce Fair	RM Cat Sanctuary		5 August		Etchinghill Boot Fair	ECC	
10 June		Etchinghill Boot Fair	ECC		17 September		GARAGE SAFARI		863537
13 June	7.30pm	LVH AGM	LVH		2 October		Lyminge Association AGM		863737
17 June	4pm	Cantores - Joint Concert	See ad P10		14 October	10am	Etchinghill Village Clean-Up	EVH	863164
17 June	7.30pm	Haywardians	LMC		14 October	7.30pm	Fun Quiz	EVH	
24 June		Etchinghill Boot Fair	ECC		4 November	10.15	Coffee Concert	LMC	863164

Weekly Events

Day	Time	Event	Where	Tel. No.	Day	Time	Event	Where	Tel. No.
Mon	10am	Open House	EVH	863394	Wed	11.45am	Pilates	TC	07825109670
Mon	10am	Bridge Club	BC	863177	Wed	7pm	French Conversation	KH	862972
Mon	10.30am	Lyminge Larks (Singing)	TC	01233750223	Wed	7.30pm	Cantores Choir	LSH	07813071867
Mon	11am	Cookery	JC	269602					
Mon	2pm	Computer Buddy (need to book)	LL	03000413131	Thur	9.30am	Baby Rhyme Time	LL	03000413131
Mon	2.30pm	Knit and Natter	TC	863049	Thur	10am	RM Toddlers Group	RVH	863096
Mon ⁵	6.30pm	Ballroom/Latin/Salsa Dancing	TC	07966 751991	Thur	10am	Art Group - Morning	TC	211364
Mon	6.30pm	Judo Club	LVH	862946	Thur	11am	Shopping trips to Supermarket	JC	269602
Tues ¹	10am	Baby & Toddler Group	TC	863274	Thur	2pm	Art Group - Afternoon	TC	862972
Tues	10am	Baby Signing	EVH	07800737936	Thur	6pm	Ballroom and Salsa Dancing	EVH	07967979610
Tues	10.30am	Art Class	JC	269602	Thur	6.45pm	Short Mat Bowls	LVH	863842
Tues	11.15am	Chairobics	JC	269602	Fri	10am	Feel A Fairy Tale Sensory	EVH	07800737936
Tues	11.15am	Feel A Fairy Tale Sensory	EVH	07800737936	Fri	10am	Talk Time	LL	03000413131
Tues	6.45pm	Short Mat Bowls	LVH	863842	Fri	11.15am	Baby Signing	EVH	07800737936
Wed	10.15am	Mature Movers (Exercise)	TC	862873	Fri	11am	Seated Exercise	JC	269602
Wed	11am	Singing For Health	JC	862364					

Monthly Events

When	Time	Event	Where	Tel. No.	When	Time	Event	Where	Tel. No.
3 rd Mon	7.30pm	Etchinghill Cinema	EVH	863333	3 rd Wed	2pm	RM Circle	RVH	862913
Last Mon		Parish Council Meeting	SNL	239500	Last Wed	7.30pm	Quiz Night	C&H	862694
1 st Tues	10.30am	Reading Group	LL	03000413131	1 st Thurs	7.30pm	British Legion, Elham Branch	St Mary's Hall, Elham	862508
1 st Tues	11am	Reminiscence	JC	269602	2 nd Thur ⁶	10.30am	Court Lodge Green Clean	LVH	864235
1 st Tues ²	7.30pm	LHS Talk/Event	TC	862972	4 th Fri	7.30pm	Beetle Drive	RVH	862616
3 rd Tues	9.45am	Family History	LL	03000413131	Last Fri	1.30pm	Team Quiz	JC	269602
3 rd Tues ³	7.30pm	Gardening Society	TC	862264	1 st Sat	10am	Village Market	EVH	863819
1 st Wed	10.30am	Lyminge Friends	LMP	862598	2 nd Sat	10am	Postling Ch. Coffee Morning	PC	863536
2 nd Wed	10.30am	Mothers Union	NP	862221	3 rd Sat	8am	Saturday Market	TC	862164

¹ In term time only ² Except Jan, Feb, July and August ³ Except Jan, Feb, Aug ⁴ Except Aug and Dec ⁵ Except Bank Holidays ⁶ Starting September

Out and About

*Do you have any photos of local events or local groups in action, please call 01303 862699.
Give your group a FREE plug!*

The Lyminge Dramatic Society's production of "The Vicar of Dibley", played to 4 completely full houses from 5th April to 8th April. A really entertaining show with a brilliant cast and an incredible wedding dress for Alice at the Dibley wedding of the year!



The beautiful floral cross at the **Methodist Church** to remind us all of the message of Easter. ➡



◀ Some of the entries to **The Rhodes Minnis Spring Show**.



A selection of the entries to **The Lyminge Gardeners' Spring Show** with the cup winners, left to right, Sara Packer, Diane Long, Yvonne Neville, Gerry Newman and Sally Martin in the front.

➡ Congratulations to The cup winners of the Show: Dorothy Athrow, Daphne Andrews and Gerry Newman.

Mystery Photo



Last month's picture was the telecommunications box half way along Station Road.

Where have you seen this?



➡ Saturday 22nd April saw the Laying Up of the old standard of the **Elham Valley Branch of the British Legion**. The service was attended by [above left] Air Marshal Christopher Nickols CB, CBE - Deputy Lieutenant of Kent, Cllr Jenny Hollingsbee and Richard Cast, the County Chairman of the Royal British Legion in Kent. Right - th dignitaries assembled at the War Memorial.

The New Standard which was dedicated at the service is carried by Cadet Cullam Balch flanked by his his two instructors. ➡



D.M.B. Plastering

All aspects undertaken
*Interior. Exterior. Plastering. Rendering.
Coving. Ceilings Wall. Floors*
Finest quality assured. CSCS Certified.
30 years experience.

Free estimates. Reliable service. Fully insured.
Call **David** on **07818 607209**

P Davis + Co

General Builders and Roofing Specialist
All work undertaken
Call for free estimate

Tel: 01303 863049 or 0784 6769643

Personal Computing

For straightforward I.T. advice, solutions
and training

Contact: **Steve Ashman**
862869

sra@ashman-consulting.co.uk



CARE FOR YOUR FEET

IAN COX MSSCh MBChA CHIROPODIST
at AGE UK HYTHE AND LYMINGE

Treatments include toenail cutting, corns, hard skin, fungus and more
Prices from £12.00

For further information and to book an appointment
'phone 01303 269602



Wilco Plumbing & Heating

Central Heating Installations & Repairs
Gas & Oil Boiler repairs & replacements
5 Year Guarantee on Worcester Bosch Boilers.
Local Experienced Engineer, Emergency plumbing 24/7 call out
Registered with the Institute of Plumbing
Gas Safe Registered-OFTEC Registered
01303 862173 07860 452640
paul@wilcoplumbing.co.uk www.wilcoplumbing.co.uk

TOBY'S TREE SURGERY

Thinning - Reducing - Maintenance - Felling
ALL TREE WORK, BOTH PRIVATE AND COMMERCIAL,
UNDERTAKEN BY OUR NPTC TRAINED OPERATIVES
Professional Friendly Service

FREE ESTIMATES - FULLY INSURED

Contact Toby Griggs:

07854 098 395 or (01303) 863642

D. SCRIVENS

PLUMBING & HEATING
Oil Fired Boiler Installation,
Commissioning, Service and Maintenance.
Unvented Hot Water Systems - Solar Water Heating
Central Heating - Water Softeners - Bathrooms - Showers - En suites
Approved 'Aqualisa' Installer
WATER INDUSTRY 'APPROVED PLUMBER'
FULLY INSURED
07810 897076 scrivensplumbing@aol.com

East Kent Foot Care

Mobile Foot Health Practitioner
Jo Shapter BSc (Hons), MCFHP, MAFHP

Treating and managing common foot problems,
corns, callus, verrucae, thickened nails,
toe nail management, fungal problems,
diabetic foot assessments etc.

Call: 07745 532075

Member of the British Association of Foot Health Professionals



Total garden care for all your needs

TIM MILLETT

Grass Maintenance, General Gardening, Small & Medium
Size Tree Work, Stump Grinding and Wood chipping
Fencing Repairs & New Installations
Turfing, Hard & Soft Landscaping
Free Estimates - Fully Insured

01303 863676 07752 880583

Email: info@tmhorticulture.co.uk

THE BIG LITTLE BATHROOM COMPANY



COMPLETE BATHROOM SUITES • BESPOKE CAST IRON RADIATORS
TAPS • SHOWERS • TILES • ACCESSORIES • TEA & COFFEE

CANTERBURY ROAD, ETCHINGHILL, KENT CT18 8BS
sales@theblbc.co.uk • 01303 864349 • www.theblbc.co.uk

N.P.C.

Domestic Appliance Services

*Service and repair of washing machines, tumble driers,
dishwashers, cleaners and small electrical work. For a
prompt and friendly service*

Call Neil Collard 01303 892234 or 07798716044
or **www.npcdomesticapplianceservices.co.uk**

Auto Economy Centre
Fully equipped Mechanical Repair & Service Centre
with the latest diagnostic equipment
MOTs £44.95

01303 863656

Orchard Garage, Canterbury Rd, Etchinghill
www.autoeconomycentre.com

Old English Pine

Antique, repro pine, oak and French-style painted furniture with beautiful and reasonable priced accessories to make
your house a home. Bespoke pine units made to order. Huge shop - over 3 floors. Open 7 days a week.

Tel: 01303 248560 www.oldenglishpineinkent.co.uk 100/102 and 90 Sandgate High Street, Sandgate



**Lyminge
Country
Bakery**

01303 720126
www.lymingecountrybakery.co.uk
baker@lymingecountrybakery.co.uk

A Selection Of Our Produce

- Traditional Loaves
- Low GI Bread
- Sweet Products
- Mini Loaves
- Artisan Bread
- Baguettes
- Specialty Loaves
- Savoury Products
- Bakery Specials

OIL BOILER SERVICE

Professional Friendly Service. Prompt Response to Breakdown Calls. Over 40 Years Experience.

For Routine servicing, emergency breakdown calls and commissioning, contact:

P & V QUENBY LTD (Est 1987)

01227 760428

www.oilboilerskent.co.uk

OAK
creative



we're at Newingreen, call for a chat on 01303 812848

www.oakcreative.net

Advertising
Branding
Digital Design
Illustration
Marketing
Print Design
Web Design & Development

Local Ironing Lady
Smart, Friendly Service

smartpress
SERVICES

Free delivery & collection – min order £10
Cleaning service also available

Call or text - 01303 864229 / 07702 321686
tash@smartpressservices.com

T. Metcalfe Fencing Contractors

Approved Expert Installer for Jacksons Fencing
Established over 30 years
Fully insured - Highly experienced teams



Panel fencing, gates, decking, pergolas, post & rail,
stock fencing, security, landscaping & tree surgery.

01303 840201 07790 290 155

metcalfefencing@btinternet.com

Proprietor - Derek Burr,
Ash Ridge House, Elham



**KENT & SUSSEX
HOLIDAY COTTAGES**



With over 250 properties in this region and an expert local team, call now to book your break or to talk to one of the team about letting your property for holiday rentals

— 01304 619 444 —

www.kentandsussexcottages.co.uk • info@kentandsussexcottages.co.uk

12 King Street, Sandwich, Kent CT13 9BT



SPRING RISE PET CARING SERVICE

DOG WALKING, PET FEEDING, PET VISITS & MUCH MORE!

Whether you need me regularly, short term or occasionally, I provide a reliable, caring service for you and your pets.

Experience of working with a range of animals from small mammals to large farm animals

Free (no obligation) consultation. CV & references available.

Fully insured and security screened. Contact me (7 days a week)

Mobile: 07582407637 Email: susannahparkin@googlemail.com

Website: www.thespringrise.co.uk

Essential Beauty

*reflexology : aromatherapy : collagen mask facials
non-surgical perceptor : facials :uccio gel varnish
manicures & pedicures : waxing & eyelash/brow tinting*

Therapist with 20 years experience

Call Janene Moat 01303 840052

The Limes, High St, Elham.

Free eyebrow tidy for new clients.



Mini Digger and Operator for Hire

Call Mick for a competitive
quote

Mobile: 07979881873

Landline: 01303862079

Email: mickattwell@aol.co.uk

Absolute Financial Management Daniel Stapley CeMAP Independent Mortgage Advice

Initial Consultation Free!

Tel: 01303862568 or 07813030611

www.afmanagement.co.uk



FOLKESTONE 01303 210335 HYTE 01303 261557 TENTERDEN 01580 763278 ASHFORD 01233 613613

SALES / LETTINGS / MANAGEMENT / HUNTERS.COM

HUNTERS
HERE TO GET YOU THERE

Experts in rural and village
properties throughout
south Kent, we'll promote
your home to a wider
audience with over 170
branches throughout the
country including London.
*National recognition,
local expertise.*



Sarah de Rougemont

Craftsman/Co-ordinator

UPHOLSTERY

All commissions considered
01227 455841 or 07973 377817



Are you running out of space and need an extension?
Or perhaps you would like to remodel your house?
Friendly local architect available to help you realise your dream home.

For a no-obligation consultation, contact Salma Barwani at ruddbarwaniarchitects@gmail.com or call 07770 196190





Ralph Allard Chimney Sweep



All chimneys, boilers and stoves swept.
Brush and Vacuum. Certificates issued.
HETAS and NACS registered, fully insured.

Member of National Association of Chimney Sweeps

01303 844465 or 07813716654

REGISTERED OSTEOPATHS & MEDICAL ACUPUNCTURIST

Adam Price B.Sc Hons (Ost) Katie Price B.Sc Hons (Ost)

The Clinic 01303 863359 or mob: 07980 897382

- Treatment of lower back pain, both acute and chronic
 - Treatment of tension/cervical type headaches both acute & chronic
 - Treatment of various stiff & painful arthritic conditions
 - Treatment of sports injuries, both soft tissue & skeletal
 - Deep tissue back, neck & shoulder massage for symptomatic relief
- The cost of your treatment may be recoverable from your insurers. Please check

THE CLINIC
Garden Suite
Pendragon House
4 Station Road
Lyminge
Kent CT18 8HP
01303 863359



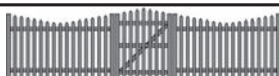
info@theclinic-lyminge.co.uk
www.theclinic-lyminge.co.uk



Sunhouse Electrical

Your local reliable Electrician
Part P Registered & Elecsa Approved
On Electrical Safety Register & Fully Insured
For a free quotation call James on
01303 766333

www.sunhouse-electrical.com



GOSBEE CONSTRUCTION

Fencing - Gates - Paving - Resin Surfacing

35 years experience.

Jacksons Expert Installer - Marshalls Paving Contractor

Call Martin Gosbee

07974 835511 01303 863337

gosbeeconstruction@gmail.com

Figures 4 Business LLP

Plan - Monitor - Control



Denise Roberts ACIS, ACMA

- Business plans and budgets
- Bookkeeping and payroll services
- Financial reporting & monitoring
- Qualified Company Secretary
- Qualified Management Accountant
- over 25 years experience

T: 07511 097707

E: droberts@f4b-kent.co.uk

W: www.f4b-kent.co.uk



MANOR VETERINARY CLINIC

We care for them all, great and small

Lyminge Clinic: Methodist Church Hall

Monday, Wednesday & Friday 4-6pm

Please call to book an appointment - 01303 273203

www.manorveterinaryclinic.co.uk

STERRY'S

*Independent
Funeral Director*

01303 272525
93 Cheriton High Street
(opp Co-op)

01303 264400
41 High Street, Hythe
(opp Lloyds Bank)

Always here for you; 24 hour service. Home visits on request.
Choice of pre-paid funeral plans

Its easy to decide to lose weight!

And its easy to decide NOT to lose weight!
Its easy to make good health choices.
And its easy to ignore your health....until its too late!
A few daily capsules & a smoothie could change your life....
But **YOU** need to make that decision to want to change.
Start this year as you mean to go on....
From as little as £1.29 per day.

www.juiceplusfoundation.com

01303 863460



Red Dragon I.T. Ltd.



- Windows, Mac & Linux Systems
- PC Health Checks
- Wired & Wireless Networks
- Website Design
- Graphic Design

T: 01303 723456 | E: info@rdit.co.uk | www.rdit.co.uk
2 Station Road, Lyminge, Folkestone, Kent, CT18 8HP

LYMINGE FOOD AND WINE 01303 862225



We are here to serve you
Mon. - Sun. 7:00am to 9:00pm
including Bank Holidays
National Lottery Here



South East Aerial & Satellite Solutions

Digital - Freeview - Satellite - Aerials

Supply and fit of quality digital installations, FREEVIEW, SKY,
aerials, poor reception and problem solving, upgrades and
repairs by fully accredited engineers

Free quotations and advice, fixed prices, fully insured

Freeview

NO CALL-OUT CHARGE

freesat

07968 659404 - 07825168010 - 01303862361

THE COUNTRY FENCING COMPANY

Local fencing company supplying and fitting timber fencing, trellis, gates and concrete posts
for homes and businesses. We are friendly and reliable so please contact us for a free quote.

Email :- info@thecountryfencingcompany.co.uk

Website :- www.thecountryfencingcompany.co.uk Tel :- 07519 590941



COUNTRY FARE

CATERING SERVICES

Country Weddings, Christenings and All Family Gatherings, Corporate Lunches, Seasonal Parties & Celebration Cakes

Sally Burr 01303 863642 07814 610995
sallycountryfare@gmail.com

Filehurst Associates

Tel: 01303 239990 E: info@filehurst.co.uk

Domestic & Business Removals - UK & France
Long or Short Term Storage
Business Document Storage
Call now for a no obligation quote

FRESHLOOK GARDENS

Regular lawn mowing service. Garden design. Hard and soft landscaping. General garden work, fencing and decking. Turfing hedge cutting, small and medium tree work. Water features, ponds and patios.

For free quotation ring Geoffrey Hogben
01303 844 680 / 07866 091633

sales@freshlookgardens.info

www.freshlookgardens.info

Established since 1990. Fully insured.

Browns

Elham 01303 840422
Hawkinge 01303 892000

Sales
& Lettings

Over 40 years of Kent
village and country
property

THE local and regional
specialist. Why settle
for less?

www.brownscountryproperty.co.uk

rightmove

onTheMarket.com

RICS

LYMINGE NEWSAGENTS

11-13 STATION ROAD, LYMINGE CT18 8HS
01303862566

POST OFFICE, 'OFF LICENCE'
CONVENIENCE STORE

Dry Cleaning and Laundry, can deliver Papers
OPENING HOURS

7AM TO 10PM EVERY DAY

Local Tradesman

J Tappenden

Established 36 years



Painter/Decorator/Builder

01303 862467

077755 78008



Alan Croucher

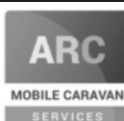
Caravan Engineer

07921 480919 - 01303 863194

Caravans & Motorhomes "WE COME TO YOU"

www.arcmobilecaravanservices.com

"Your manufacturer's warranty is safe in our hands"



Jackson Plumbing Property Maintenance

Complete bathrooms and tiling
No job too small. Special rates for OAP's.

Telephone: home/evening 01303 270691
or daytime 07773 089398 or 07864 929826

M. J. Athow

BUILDER & DECORATOR, EST. 1965
GENERAL MAINTENANCE

Qualified and Insured. Free estimates

Telephone: 862616 Mobile: 07976 306665

Email: m.j.athow@live.co.uk

SIX MILE GARAGE LTD

Stone Street, Stelling Minnis, Canterbury, Kent CT4 6DN

- Car and light commercial servicing
- Class 4 and 7 mots and repairs
- Car and light commercial accident repair centre (insurance approved)
- Diagnostics bay with latest equipment
- Tyre bay with four wheel alignment and balancing
- Air conditioning servicing

Tel. 01227 709214 or 01227 709491, Fax 01227 709331

E-mail: office@sixmilegarage.co.uk

Trevor Law

Electrical Installations



Serving Elham Valley for 30 years
Part P Registered

01303 862348

07850 970087

J. V. Services

Servicing and Repairs:

- Garden Machinery
- Ride on Mowers
- Trailers & Horseboxes
- Quad Bikes
- Classic Cars

(Free collection and delivery)

Mobile Mechanic

Serve/Repair/Full Restoration:

- Compact Tractors
- Vintage Tractors
- Classic Tractors

Mobile: 078 0300 3047

john@jvserviceskent.com



TMA BUILDERS

Specialising in Driveways, Brickwork, Patios, Fencing, Landscape Gardening. Tree work undertaken (lopping, felling and clearing).

General household repairs, painting, plastering, power jetting & cleaning.

No job too small!! All work guaranteed and insured.

For free advice and quotations please call: 07980114036/ 01303862361 (anytime)





DILTON MINI SKIP HIRE

Ballast, Hardcore, Sand
and Topsoil Supplied
REGISTERED WASTE CARRIER
01303 812448 or 07799 433754

'Helping you enjoy your garden'

CRT Gardening

Knowledge of general gardening, including lawn care, hedge trimming and cutting, vegetable garden work, fencing installations and repairs, small and medium size tree work and ongoing maintenance of all of them.

Heavy-duty work is also undertaken.

Free estimates; fully insured. Karl Dodd 07967442518

Email: karl.dodd@live.co.uk www.crtgardening.com

AIR LINK CARS

(You pack up, we pick up)

Airport, Seaport & Long Distance Travel Specialists.
The Family Run Business where service really counts
Estate cars and People Carriers



Fixed price 24hrs a day. No extras.
Written Confirmation of booking.
For the Easy Airport Link, Think AIR LINK!
01303 670370 - 07766 824 474
airlinkcars@yahoo.com

KW CONSTRUCTION

Plastering & Rendering Specialist

Maintenance, renovations, extensions,
landscaping, patios, brickwork, roofing

- 30 years experience
- Competitive rates & free estimates
- Fully insured, prompt & reliable

07743488361/01303 862 653/info@kwconstruction.co.uk



Laing Bennett
INDEPENDENT ESTATE & LETTING AGENTS
PHILIP A CHAPMAN

With our excellent local knowledge, service
and two local offices we will get you moving

The Estate Office 8 Station Road Lyminge Kent CT18 8HP
T 01303 863393 E lyminge@laingbennett.co.uk
134 High Street Hythe Kent CT21 5LB
T 01303 264846 E hythe@laingbennett.co.uk

www.laingbennett.co.uk



Hawkinge

Veterinary Surgery You'll find us opposite

Veterinary Surgery

Lidl

supermarket, Hawkinge

Opening hours: Monday to Friday 08:00-19:00
Saturday 08:30-13:00 24 hour emergency service

Tel: 01303 764190

www.hawkingevetsurgery.co.uk

email: hawkingevetsurgery@gmail.com

SNIPPERS & CLIPPERS UNISEX HAIR SALON

✂ APPOINTMENT NOT ALWAYS NEEDED

✂ WEDDING & SPECIAL OCCASION

✂ GENTS WELCOME

✂ FREE WIFI

✂ SHELLAC NAILS

4 Station Rd, Lyminge,
Folkestone,
Kent, CT18 8HP

01303 647 222
info@snippersandclippers.co.uk



SCRUBBERS - Est. 1988

THE HOME AND COMMERCIAL CLEANERS

One off, regular or moving day 'Blitz'

Oven cleaning - Ironing

Carpet cleaning and more...

For a friendly and reliable service

Free Estimates

Tel: 01303 249288 or 07834 128671

Dennis Huntley

Installer of wood and multi-fuel stoves, heating engineer,

chimney sweep

Lyminge 01303 862 343

Mobile: 07850 784 365



SEATHWAITE BOARDING CATTERY LTD.

Supporting Rhodes Minnis Cat Sanctuary

GREEN LANE, RHODES MINNIS, CT4 6XUTEL: 01303 862243 (Registered charity 262245)

ONLY CATS BOARDED, IN QUIET COUNTRY LOCATION

Individually heated chalets. Single cat £7 per day, a reduction for 2 or more cats. All cats boarded with us must have current vaccinations against cat flu & feline enteritis. All profits from the boarding cattery go to support homeless cats in the Sanctuary.

RHODES MINNIS CAT SANCTUARY

has a wide variety of cats available to caring homes.



CEDAR HOME MAINTENANCE

Building Alterations
Kitchen Installations
Painting & Decorating
Plumbing
Plastering

Damp Proofing
Drainage
Carpentry
Re-pointing
Patio's

Windows & Doors
Gutters & Down Pipes
Fascia's & Soffits
Glazing
Electrical

Roofing
Fencing & Gates
Property Clearance
All Work carried out by Qualified Tradesmen (Fully insured - all areas of Kent covered)

Call Dominic: 07968197613 Office: 01303 230787

cedarhm@hotmail.co.uk and www.cedarhomemaintenance.co.uk

Environment Agency Registered (Reg/472477) Established Since 1986

HOLDEN PLASTERING

All aspects of Plastering

Smooth-over Artex - a speciality.

Coving, Tiling and Plumbing

Phone JAMES for free estimate or advice on:

01303 770449

07773 262970

Coul-Pups Pet Care Service. Fully insured, qualified and experienced member of the National Association of Registered Pet Sitters (NARPS). Dog walking, 1 to 1 dog training or in class environment in association with Elham Dog Training Club. Dog grooming, cat and small pet care and house/pet sitting.

Visit: <http://coul-pups.vpweb.co.uk/> Email: coulpups@gmail.com Phone: 07542 727326

Elham Dog Training Club Lyn Fagg 01303 862820