



THE LYMINGE NEWSLETTER

For the communities of LYMINGE, ETCHINGHILL, RHODES MINNIS and POSTLING

April 2018

Produced by
THE LYMINGE ASSOCIATION
www.lyminge.org.uk

The Lyminge Association brings you:

STREAM CLEAN 7th April

Well Field - 10am start

*Your chance to get wet, muddy and smiley
as you help clear some vegetation and debris
from a few of the water courses in the village.*



LYMINGE LITTER PICK

Since the previous litter pick was postponed because
of the poor weather, it has been rescheduled for

Saturday 5th May

Jointly sponsored by

**The Lyminge Association and Lyminge Parish
Council,**

it will start from **Lyminge Village Hall
at 10am**



GARAGE SALE SAFARI

and TABLE SALE

at Lyminge Village Hall

Saturday 21st April

starting at 9.00am

CURRENTLY TAKING BOOKINGS

For garages in Lyminge and surrounding villages

Registration Forms available from

Snippers & Clippers

or download from www.lyminge.org.uk

Closing date Monday 16th April

for further information

call Sylvia on 01303 863537

Organised by
The Lyminge Association



The Lyminge Association (LA) plays a significant role in shaping the communities in which we live. Often this is by way of the monthly Newsletter and a number of one-off events such as the Musical Evening, Garage Safaris, Stream Clean, etc. All profits are fed back into the community via grants or donations.

This year, the LA is sponsoring a **Junior Dragon's Den** giving young people an opportunity to secure funding for projects. There will be five £100 grants. Projects should aim to bring benefit to the community within the area of Lyminge, Etchinghill, Rhodes Minnis and Postling and entry is open to any age group (8-18 years of age) within the community. Applications are invited from groups of young people or individuals and they will be judged by a panel of six, made up of 3 young people and 3 committee members plus a chair.

Now's the time to start about possible projects!! Full details and application forms will be available from The Editor in late April and the event will take place in the **Tayne Centre** on **23rd June at 2pm.**



LYMINGE PARISH CHURCH SERVICES

Church Website: www.lymingechurch.co.uk

If you need to contact the church during the absence of a Rector please ring the Church Warden 01303 862151

SERVICES

Sun 1 st April	11.00am	Easter Day Eucharist
Sun 8 th April	11.00am	Sung Eucharist
Sun 15 th April	11.00am	Family Communion with children's activity area
	6.00pm	Evensong
Sun 22 nd April	11.00am	Sung Eucharist
Sun 29 th April	8.00am	Said Holy Communion BCP
		NO SERVICE at 11.00am
		Everyone is invited to attend an Elham Valley Group Joint Eucharist Service at 10.00am at Wootton
Sun 6 th May	8.00am	Said Holy Communion BCP
	11.00am	Sung Eucharist

FORTHCOMING ACTIVITIES

Mothers Union

Wednesday 11th April at 10.30am
in the lounge at Nailbourne Court

A talk on the Salvation Army
by Richard Blackwell

Music on a Friday

Friday 15th June in the church at 7.30pm
'Memory Lane'

Brings music from the 60/70's

PADDLESWORTH PARISH CHURCH SERVICES

Sun 1 st April	6.00am	Day Break Service with first fire followed by breakfast at Church Cottage
Sun 8 th April		NO SERVICES
Sun 15 th April	9.30am	Holy Communion
Sun 22 nd April		NO SERVICES
Sun 29 th April		NO SERVICES - Everyone is invited to attend an Elham Valley Group Joint Eucharist Service at 10.00am at Wootton
Sun 6 th May	6.00pm	Evensong

LYMINGE METHODIST CHURCH

Visitors are very welcome to join us at our weekly service at **11am** and invited to share fellowship afterwards with a cup of coffee/tea.

8th April - Rev. Kevin Taylor (incl. Holy Communion)

15th April - 10.15am Valley Service at Rhodes Minnis

22nd April - Mr Ian Couchman

29th April - Mr Richard Blackwell



RHODES MINNIS CHURCH

This small Chapel in beautiful countryside holds a weekly Sunday Service normally at **9.30am** followed by coffee and biscuits. A warm welcome is extended to any visitors.

1st April - Easter Day united service with Elham Methodists
- Rev. Sam Funnell (incl. Holy Communion)

8th April - Mr. Richard Blackwell

15th April - **10.15am** Elham Valley service

- Rev. Kevin Taylor (incl. Holy Communion)

22nd April - Local Arrangement

29th April - Mr. Richard Blackwell



POSTLING CHURCH SERVICES

1st April - **Easter Day 9.30am.** Family Communion

8th April - No service

15th April - 8.00am Holy Communion

22nd April - 5.00pm Tea Service

29th April - No service



CHRISTIANS IN LYMINGE



8th April: Talk titled "Anglo Saxon Rights for Women" 3.30pm in the Parish Church.

11th April: Please sponsor or take part in the "Sponsored Knit-in 2018" 2.15pm at the Harvey Grammar School. Sponsor money goes to the Rainbow Centre and knitted blankets go to "Operation Sunshine".

21st April: Saturday Morning Market at the Tayne Centre.

Every Monday "Knit and Natter" in the Methodist Church.

We look forward to seeing you at these events.

Lyminge Newsletter

Terms & Conditions: Copy deadline for next edition - 18 April 2018

Please email your copy in to the editor (pb@pbarnes20.plus.com). Your payment must be received before your article or advert can appear in the Newsletter. Please leave your payment along with your name, organisation, telephone number and copy of your ad in a sealed envelope at the Lyminge Library.

Business adverts cost £9.50 per month or £95.00 per year. **Personal and charity adverts and articles** from £3 per month, or £30.00 per year. The annual rate offers 12 entries for the price of 10. Please make cheques payable to 'The Lyminge Association'. If you do not have email, a typed paper-copy may be left with the payment.

Lyminge Association accepts no liability for the accuracy of the advertisements or subsequent actions arising in conjunction with advertisers in the newsletter.

Further details from Peter Barnes (editor) on 01303 863737



BADGERS BRIDGE NURSERY

*"Bridging the indoor and outdoor learning environment
for children in their Early Years"*

The Preschool Setting

Badgers Bridge nursery offers a smaller, calm setting environment combining Montessori principles alongside the EYFS to deliver the best start for your child. Our skilled and highly qualified practitioners will care and support your child during their time and learning at Badgers Bridge. We support the ethos of outdoor learning and are out and about in the surrounding areas as much as we can.

Forest School Wednesdays

On our own forest school site we provide an outdoor day every week. Fun at Badgers set is learning in it's most natural form. Our Forest School is a unique way of building independence, self-esteem and a positive attitude towards learning in children and young people as they explore and experience the natural world for themselves.

Flexible sessions. Free Early Education places for 2, 3 and 4 year olds. Childcare voucher schemes accepted. Places available.

Email : badgersbridge@gmail.co.uk

Website : www.badgersbridge.co.uk

Tel : 01303 862951

Ofsted Registered : 395128

Companies House Reg : OC375571

Lyminge Friends - April 2018

In March, we had another of Derek Smith's entertaining and informative talks, this time on '*The Kent & East Sussex Railway*'. We then popped over to Brockhill Country Park Café for lunch.

On Wednesday 4th April, we have a return visit from Wendy Fraser who will give us her talk entitled '*A Walk Around St Margaret's at Cliffe and St Margaret's Bay*'. Our Easter Monday Lunch will be in the Coach & Horses on Monday 2nd April. Don't forget to book your place with Marian.

On 2nd May, we will hear from Dr Andrew Richardson, of Canterbury Archaeological Trust, entitled '*The Making of the Kingdom of Kent*'. On 16th, we are due to go to the Folkestone Garden Centre for a look around and afternoon tea in their café. Make sure your place is booked with Marian.

Meetings are 10.30am - 12.30pm in the Rigden Room of the Tayne Centre. Entry for 2018 is £3.00 which includes light refreshments. We are a friendly social group and welcome new members so just drop into one of our meetings, or, if you'd like to talk to one of us first, please call 863500.



POST OFFICE[®] Message from Lyminge Post Office Staff - Caroline and Sara

Sara and I, between us, have worked at Lyminge Post Office for some 32 years. We consider ourselves to have been very fortunate to have worked in such a busy and friendly rural community. Apart from being able to provide a valuable service, our customers made our jobs so enjoyable as well. Having a chat, a joke or a laugh was all part of our day. We have been very touched by all the support and concern that we have received since the closure of the Post Office and we would like to say thank you so much, we really appreciate it. We are going to miss it very much indeed.

Caroline and Sara

A Post Office spokesperson said: "We sincerely apologise to customers for any inconvenience caused by the temporary closure of Lyminge Post Office.

"We understand and appreciate how much communities rely on our services. We would like to reassure customers that the decision to suspend services at any of our branches is never taken lightly. We take very seriously any decision to temporarily close a branch, and will only do so when it is warranted.

"We are working hard to restore services for the community as quickly as possible. We cannot share any further details with you due to this being a confidential matter and we are unable to confirm when the branch is going to reopen. In the meantime, customers can access Post Office services at any Post Office, including Elham Post Office."

The full address of the nearest branch is:

- Elham Post Office (2.4m), The Kings Arms, The Square, Elham, CT4 6TJ (open Tuesday, Wednesday and Thursday: 9.30am – 12.30pm).

... and with other POs in Sellindge (4.2m), Stelling Minnis (4.7m), Cheriton (5.3m), and Barham (6.9m).

Representations have also been made to Damian Collins MP and Councillor Susan Carey.

From your District Councillors

So farewell Shepway. The Secretary of State has confirmed the name change to Folkestone & Hythe District Council from this April. With this change comes another as our Chief Executive since 2004, Alistair Stewart is taking voluntary redundancy. Alistair joined the Council at a very challenging time but saw us rise to a 'good' council and still improving. We wish him a long and healthy retirement. Our top team will be smaller as part of a larger programme to change the way we work – doing more online, less staff working in offices, more staff out in the district proactively tackling problems and helping residents.

Last year we put most of our claims system for benefits online which meant people could access it 24/7 and those who did not have a computer or smartphone could use one of the computers at the Civic Centre or be visited at home. Most people found this a much better service and it freed staff to help those who needed help. This project recently won first place in the Public Sector Transformation Awards.

On 28 February, the District Council set its budget for 2018/19 with a 2.98% increase in council tax which equates to an increase of £12.24 a year for a Band D property. The District Council is responsible for collecting council tax on behalf of Kent County Council, Kent Police, Kent Fire & Rescue Authority and your parish council and its share of the total bill is around 14%.

We are very pleased to report that Homes England, the Government agency which is responsible for delivering more homes, has bought land within the Otterpool Park Garden Town area and will be a full partner with the District Council. Homes England brings expertise, money and powers and this is another sign of the Government's support for the project. We expect the master-plan for Otterpool Park to be ready soon for public consultation followed by a planning application this autumn.

Jenny attended Lyminge Parish Council Meeting on 26 February; she also visited the Age UK Centre and went to the Postling Coffee Morning on 10 March. Susan was at the monthly market at Etchinghill Village Hall on 03 March, Susan gave two district council ward grants to local groups; £168 to Etchinghill Residents' Association for a drinks heater and £492 to Lyminge Scouts towards the costs of their new training room.

Finally a word of thanks to all those who helped during the snow emergency. We know Kent Highways was out day and night keeping the main roads gritted but many others made extra efforts to keep essential services going and as usual in this parish people helped one another. Thank you.

Susan Carey (susan.carey@shepway.gov.uk 01303 670561) and **Jenny Hollingsbee** (Jenny.hollingsbee@shepway.gov.uk 07887918458) - ward councillors for North Downs West, Shepway District Council

Women's Rights In Anglo-Saxon England

Sunday 8th April 3.30pm

Tea and Cake before a

talk by **Mike Foxon**

**St Mary & St Ethelburga Church
Lyminge**

Rhodes Minnis Circle

Unfortunately because of the icy weather we had to cancel our February meeting.

Our meeting on 25th April will be a talk by **Ingrid Goodchild** on the *Goodchild Nursery in Gambia*.

We meet at Rhodes Minnis Village Hall at 2.30pm and welcome both our members and visitors.

For further details please contact 01303 862913

Rhodes Minnis Village Hall

Table Top Fair

Saturday 21 April

10am-1pm (stall holders from 9am)

To book a table at £5 - contact 01303 863660

Free Entry - raffle and refreshments available

Hope to see you there

Obituary - Jean Howard

It is less than 12 months ago that Jean decided she would have to relinquish her position on The Lyminge Association committee. Unfortunately, her health continued to steadily deteriorate to a point when she passed away on 10th March.

Jean came to the area in 1996 and has been relentlessly involved in all-manner of village life, as reflected in the Etchinghill obituary (P5). She was a very sensitive soul and took on her responsibilities with a firm conviction to do it to the very best of her ability, irrespective of the time and effort it would take. Jean is now spared any further pain and suffering and she leaves this world a better place through her dedicated efforts.

Whilst she was a very private individual, we all knew she held her family in high esteem. She will be very sadly missed by us all and we all extend our heart-felt condolences to Debbie, Tim and all her family.



Tayne Centre MARKET

Church Road, Lyminge

SATURDAY 21st April

9am - 12 noon

Pies, Preserves, Crafts, Cakes, Gifts,
Vegetables, Jewellery, Cards.

Teas, Coffee, Bacon or Sausage in Roll



ETCHINGHILL RESIDENTS' ASSOCIATION – Dave McCombe 07939 076617

ETCHINGHILL CINEMA CLUB is showing the film 'The Time of Their Lives' (12) at Etchinghill Village Hall on Monday 16th April. Doors open at 7 pm for a 7.30 pm start. Determined to gatecrash her ex-lover's funeral being held in a glamorous French hideaway, former Hollywood siren Helen (Joan Collins), escapes her London retirement home with the help of Priscilla (Pauline Collins), and becomes involved in a love triangle with an Italian millionaire along the way. New and existing members are welcome. The entrance fee of £5.00 includes admission, refreshments and a lucky draw ticket. Film shows take place on every third Monday of the month, with the exception of December when there is no screening. For further information, please visit www.etchinghill.info

ETCHINGHILL RESIDENTS LITTER PICK is being held on Saturday 14 April. Please meet at the Village Hall at 10 am if you can spare an hour or two to tidy up the village. Thank you.

ETCHINGHILL RESIDENTS' ASSOCIATION FUN QUIZ will be held on Saturday 19 May. Doors open at 7 pm for a 7.30 start. Tables may be reserved (6 persons max.) in advance - please contact Geraldine 07544 670363 or email gpmccombe49@gmail.com. Entry cost is £3 pp to raise funds for the ERA. Please bring your own refreshments.

ETCHINGHILL VILLAGE HALL – John White 863819

VILLAGE HALL MARKET – Saturday 7th April, doors opening at 10.00am. Many stalls available plus the usual refreshments and the famous bacon rolls.

OPEN HOUSE – every Monday (with the exception of Easter Monday) open from 10.00 – 12.00. The speaker this month will be Paula Cairds from Guide Dogs for the Blind on Monday 23rd April. Come along for company and a natter.

BINGO - Following the Easter break Bingo will continue on Wednesday 11th April starting at 2.00 pm

OBITUARY

It is with deep regret that we have to inform friends and acquaintances that **Jean Howard** lost her long and brave battle with ill-health and passed away at The Pilgrims Hospice at Ashford on Saturday 10th March. Known as grandma to many youngsters in the area, Jean was a stalwart member of the community being involved, over many years, with St John's Ambulance, the Lyminge Association, Ethelburga Quilters, St Nicholas Fayre, Etchinghill Residents' Association, Etchinghill Village Hall, Shepway Footpath Preservation Society, Age UK, to name but a few. Her presence will be sorely missed, (as will her cooking). Our deepest condolences are sent to all her family.

If you have an item you would like included please contact Barbara on 862873 or Barbara.newing@hotmail.co.uk

News about Manor Vets Lyminge Clinic



As many of you are aware, Tony Barnes has recently taken a well-deserved retirement. This has meant we have been unable to run our popular Lyminge Surgery in the Tayne Centre.

We are delighted to report that we are now able to open again, generally on a Tuesday afternoon, 2.30pm - 4.30pm. Our Senior Vet, Stephanie, will be in attendance, accompanied by our Nurse, Lisa. We will now be able to take blood tests and also bring out food and medication if required for a more local collection.

If you wish to make an appointment, please contact the team on 01303 273203.



World War I Commemoration - Remembrance Sunday

11 November 2018

'There, But Not There'

On 11 November, Remembrance Sunday, there will be a series of national events to mark the centenary of the Armistice, marking the end of WWI. In Lyminge, there will be a poignant Service of Remembrance and the 28 fallen soldiers from this area that never returned home from fighting in WW1 will be remembered in a very special way.

The Lyminge Association and Lyminge Parish Church will be joining in with **'There, But Not There'** organisation, purchasing 28 perspex silhouette 'tommies' to sit in the pews of the church reflecting these fallen men.

The Lyminge contributors are mindful that other villagers and organisations may wish to contribute to the installation and be a very tangible part of this event. To that end, we would welcome any financial donations towards their purchase which may be passed to Adrian Willcox (01303 862699).

More about the project can be found at www.therebutnotthere.org.uk

"I felt as if the souls and spirits of those who died all those years ago had been bought back to life in the church. List of names on a memorial are all very well, but it is the visual impact which is so important."

"A truly beautiful, moving and evocative memorial. It really brings it home. Wow!"

Lyminge 5k Fun Run

13th May 2018

10.30am Lyminge Village Hall

In Aid of



£10 per Runner (Registration from 10am on the day)

* Snacks * Drinks *

* Fun Run Obstacle Course for Children (from £2pp) *



Registered Charity No. 1029226

Postling Village is set in an area of outstanding natural beauty. There will be several gardens open around our village, including 2 gardens that can be found in the National Garden Scheme book.

POSTLING GARDENS OPEN

2nd & 3rd June 2018

1pm to 5pm

Free Car Parking

Entry by donation - money collected will be donated to our village church and a local charity
Tea and cakes served in our village hall and plant sale in the car park



Lyminge Dramatic Society

We hope you all enjoyed the play in the pub in March. The next one will be in May and we will let you know the date in the May newsletter. We are very grateful to the Coach and Horses who very kindly let us use their back-room.

Advance notice! You may have heard about a film, starring Meryl Streep, about the real life Florence Foster Jenkins. Florence Foster Jenkins thought she was an excellent singer. She was quite the opposite, in fact positively dreadful.

Mike Chisnall will be directing the stage version of the story 'Glorious' in November which is hilariously funny - more details to come in future newsletter entries.

Editor: pb@pbarnes20.plus.com

THE RUDE MECHANICAL THEATRE CO.

OBERON'S CURE

"Hilarious & romantic
prequel to
A Midsummer
Night's Dream"

20th
YEAR
TOURING



OUTDOOR THEATRE

The Tayne Field, Lyminge Sunday 29th July at 7.30pm

TICKETS - £16 + conc from Laing Bennett, Mike Chisnall
(01303-862743) & online at www.rudemechanicaltheatre.co.uk

Bring low backed chairs, warm clothing & picnics from 6.00pm

Outdoor Theatre in Lyminge

The very popular Rude Mechanical Theatre Company will be coming back to Tayne Field, Lyminge, this summer on Sunday 29th July.

It will be their 20th year of touring and the play is 'Oberon's Cure'. In this prequel to 'A Midsummer Night's Dream' an old goat of a fairy is not capable of resisting a beautiful young 'ooman woman. Now when has that not been in the news recently! But the waspish Hippolyta, running amok in the forest, is more than a match for him. Love is thwarted as the human and fairy worlds collide. But will it triumph in the end? A funny and at times deeply romantic play about how we deal with desire.

It starts at 7.30pm as usual, but you can get there from 6.00pm with your picnics. Bring your own low backed chairs and warm clothes.

Tickets are available on-line from the Rudes' website - www.rudemechanicaltheatre.co.uk - and locally from Laing Bennett and Mike Chisnall (01303 862743).

You won't want to miss this funny, romantic and rather poetic offering from the Rudes.

Snippers and Clippers Barbers



Monday	9am - 5.30pm
Tuesday	9am - 5pm
Wednesday	CLOSED
Thursday	9am - 5.30pm
Friday	9am - 6pm
Saturday	9am - 4pm

Station Rd, Lyminge, Folkestone CT18
8HP

01303 647333

Appointments available but not necessary
Free parking



Tel: 01303 863737

The Coffee Cabin



**FINE COFFEES, SPECIALITY TEAS,
BREAKFASTS, SNACKS, LIGHT LUNCHES,
SANDWICHES, HOME BAKES
OPEN WEDNESDAY - SUNDAY**

Canterbury Road, Lyminge CT18 8HU
01303 864222

lymingecoffeecabin@hotmail.com



THE ROYAL BRITISH
LEGION

Elham Valley Branch of the ROYAL BRITISH LEGION

is holding a Coffee Morning at
St Mary's Hall Elham on
Saturday 14 April 10.00 to 12.00.

Free coffee and cakes provided and there
is no entry charge. Come and speak to
local members and find out what the
Legion does in your area.



I'd like to say to **THANK YOU** to
the people of Lyminge and surrounding areas who have
supported so well the collection of postage stamps,
postcards and coins for the **Poppy Appeal**.

The response has been staggering and I have so far
banked £40.66 with more expected in the next few days.

Please can everyone keep collecting as this will be a
permanent ongoing project. Items can be left at **Snippers
and Clippers** and also **Lyminge Primary School** or if
preferred I will collect upon request.

Susan Foster 01303 862779

Coach & Horses



Senior Citizens 2 course lunches -

Available Monday - Saturday £7.50

Sunday Carvery - Every Sunday between 12-4pm
(booking essential)

Easter Sunday Carvery - Sunday, 1st April 12-4pm

Children's meals include a free dessert (booking essential)

Steak Night - Friday 13th & 27th April (booking essential)

Quiz Night - Wednesday 25th April from 7pm (booking
essential)

Live Music - 80's Duo 'Miami Vice' Saturday 28th April
from 8.30pm

Bookings and Contact: 01303 862694

For more information please check out our Facebook
page and search 'Coach & Horses'



Editor: pb@pbarnes20.plus.com



Lyminge Historical Society



Come and join us

New members and visitors are welcome.

Members: £11 per annum inclusive of talks.

Visitors: £4 per person payable on the door.

Tea and coffee will be served.

Tuesday 3rd April at 7.30pm in the Tayne Centre

Romney Marsh - The Fifth Continent

Speaker: John Buss

Tuesday 1st May at 7.00pm in the Tayne Centre

Rob Baldwin will address the Members prior to the talk
below:

The Lyminge Churchyard Re-excavation Project

followed at 7.30pm by a talk on

A History of Pirate Radio Speaker: Bob Preedy

Please note: Following the publication of Lyminge a history part 9, this
can be purchased through the shops at £7.00. Plus: purchase Parts 1-5
as a bundle for £22 or Parts 1-9 for £44*

To take advantage of the offer please call 01303 862865. This bundle offer
is not available from the shops.

*Postage and packaging extra for postal deliveries

**Lyminge Historical Society
Mobile Tel. No. 07759 260816**

Website:

www.lymingehistoricalsociety.co.uk



ETCHINGHILL MARKET

Back in full swing

Saturday 7th April

Everything from treats for your
dog to home made cakes. Plus

all the local news, so pop in for a cup of coffee
and a bacon roll for just £2

All your favourite stalls to enjoy in 2018.

From 10am

Plenty of free parking

ETCHINGHILL VILLAGE HALL

Charity No. 302736

In Aid of Lord Whisky Sanctuary Fund

Registered Charity: 283483

Park House, Stelling Minnis, Kent CT4 6AN

Tel: 01303 862622 Fax: 01303 863007

Website: www.lordwhisky.co.uk ~ Email: lord.whisky@btinternet.com

Boot & Spring Fayre

Saturday 5th May at Park House

Boots from 8am (cars £7 / vans £10) - Entertainment from 12noon

East Kent Piping Society ~ The Hawkinge Flyers ~ Sheep Shearing

'Froojamaflop and Fred', in association with Applause Outdoors

Bouncy Castle, Hot & Cold Refreshments, Tombola & much more!

Classic Cars & Motorbikes welcome

9th Annual Cyclo-Sportive

Bank Holiday Monday 28th May, from 9am at Park House

Entry £20 in advance or £25 on the day. Choose from testing 50 or 72 mile
routes on the quiet roads of the Kent Downs and Romney Marsh.

For further details and an entry form, visit our website or email
nickracingsnake@btinternet.com

Tel: 01303 863737

Who's Who in our Neighbourhood - Lyminge Youth Action



The Tayne Field Park Redevelopment Project



- As part of Lyminge Youth Action, we are a team of local parents working to transform the Tayne Field play park.
- For the past year we have been speaking to the community, drawing up plans and raising funds, to deliver the park that Lyminge deserves. A big thank you to everyone who has provided feedback and support so far.
- Plans include creative spaces to be enjoyed by all ages – from engaging sensory equipment to areas that will enhance outdoor arts opportunities. The parks will offer a place for the entire family to play together, as well as ample seating to enjoy the beautiful surroundings.
- We will soon announce the date of the next public meeting to unveil the park designs.
- Show your support by following us on Facebook, **@LymingeYouthAction**, where you'll find updates on the latest developments.
- **Got a question about the project in the meantime, or ideas for fundraising? Please contact us on lymingeyouthaction@hotmail.com. We'd love to hear from you.**
- We also run a Youth Club at Lyminge Village Hall on a Wednesday evening (term time).



To: Jas - Lyminge Pharmacy

Villagers throughout the Elham Valley who used the Pharmacy in Lyminge, would like to say a sincere thank you to Jas for his 17 years of, not only providing prescriptions, but for his helpfulness, patience and advice given when it was needed. He will be sorely missed.

We understand he has now retired from this profession and we wish him well for the future.

To: Age UK – Hythe & Lyminge

So many of us in the village have been saddened by the departure of many of the longstanding staff of Age UK over the last few months and would like to take this opportunity to express a very, very big Thank you for all the support and kindness they gave us and for all the hard work they have put in both for the benefit of the village and the Age UK Centre.

Some of the loyal staff had been at the Centre for many years including **Matthew Martin, Susan Foster and many more of the unsung heroes** who saw the Centre develop and provide so many essential services and facilities locally for us all to enjoy.

In appreciation we send our very best wishes to you all and thank you all again. We hope you will all find happiness and contentment in your new positions; you are all going to be missed by us.

pushing up daisies

Lyminge Conservation & Environmental Group
'the aim and purpose of supporting conservation and environmental projects within the parish of Lyminge.'

£'s to give the community...

Do you have a project that we may help?

Deadline for these applications: 30 June 2018

Contact: Mike Foxon: 01303 862073 or jam.moonraker@btinternet.com
Moonraker, High Street, Lyminge, CT18 8EN

Lyminge Judo Club

(British Judo Club Registered)



We are a small friendly village club.

We welcome and encourage both novices and skilled players and train every Monday evening at Lyminge Village Hall from 6.30pm

Open to all ages from 6 upwards - no upper age limit.

Juniors £2.50 per week Seniors £3.50 per week. First session free, with no obligation.

Contact:

Selwyn Nichols 01303 862946 selwyn_nichols@hotmail.com

ETCHINGHILL RESIDENTS' ASSOCIATION

Etchinghill Cinema Club

FILM SHOW

"The Time of Their Lives" ¹²

Monday, 16th April 2018

Etchinghill Village Hall, 7pm for 7.30pm

Entrance Fee £5 per head

Open to new and existing members

FREE Refreshments and Raffle



www.etchinghill.info

LYMINGE GARDENERS' SOCIETY

SPRING SHOW

When? Saturday 7th April

Where? Tayne Centre

Doors Open 2pm - Prize Giving 4pm

Bring your exhibits between 8:30am and 10:30am



Also.....

Tuesday 17th April ~ 7:30pm ~ Tayne Centre

'Age Proof Gardening'

Speaker: Malcolm Withall

Price: Members £3 Non-Members £5

(Contact Number: Veronica 01303 862264)

Railway Museum



Countryside & Craft Centre

The Museum, Countryside and Craft Centre is open every weekend and Bank Holiday until the end of November. The next event is the **Miniature Steam Weekend 21st & 22nd April**

www.elhamvalleylinetrust.org,
www.facebook.com/ElhamValleyLineTrust Official or Tel: 01303273014

Regular Activities - Art & Nature Club on 1st Saturday or each month.

 Hythe & Lyminge
 Support your local Age UK by joining the

100+ club

February 2018 Prize Winners

1st	£25.00	4	Pat Kent
2nd	£15.00	68	Brian Fagg
3rd	£10.00	119	Betty Worthy

3 Winners every month

You could be one of them if you join now

All Prizes doubled in December

Ask at the Centre or call Hayley on 269602

Numbers cost just £12.00 a year and each one sold raises badly needed funds to support local older people

Next Draw: Tuesday 3rd April 2018

Our Charity Shop at Age UK Lyminge is calling out for quality donations of any kind. Please feel free to drop off donations at the centre, where they will be gratefully received.

Rhodes Minnis Village Hall

BEETLE DRIVE

on Friday 27th April at 7.30pm

Teas/coffee and juice provided

There are prizes and a raffle

Adults £2 – Children 50p

Come and enjoy a fun evening.

Newcomers very welcome.



Feel Good Fitness

Want to get fit, lose weight and don't know what to do, let me help you to feel good about fitness.

New Circuits Class

Tayne Centre, Church Road, Lyminge

Every Wednesday from 28th March 7-8pm

£5 per session

Contact Debbie feelgoodfitness18@gmail.com
07925 982995

FAMILY HISTORY

Interested in your ancestry?

Lacking the time or expertise to research it yourself? Then give me a call, or email me, to arrange a free, no obligation, initial chat. Research is undertaken at very affordable rates to suit your pocket.

Clive Stanyon: 01303 840820 07771 922192
stanyonc@aol.com



The Lyminge Historical Society is very happy to announce that we have applied for and gained a grant from The Shepway Community Chest to help pay for a commemorative display board interpreting and celebrating the wonderfully successful archaeological digs on Tayne Field. We are promoting Lyminge Parish's significant archaeological past and plan to unveil the board on Tayne Field at the end of October.

As part of the celebration Dr Gabor Thomas will be giving a talk in the Methodist Church and we intend to make it a real historic occasion with other planned events on the day. We will be inviting the BBC, local press and dignitaries to the event. We want to make it a day to remember so put a note in your diary.

To pay for the event we need to raise funds so if you have any great ideas, or a cache of gold you no longer need, please think of us and let us know.

Spread the news – LHS March 2018

LYMINGE VILLAGE FOOTIE CUBS

Pre-School Football Coaching Sessions

A positive, safe & fun introduction to football
Relaxed coaching, activities & games
A professional & reliable FA approved Coach
Parent Participation Essential

FOR: Pre-Schoolers (Age 2-until they start school)
 WHEN: Saturdays (Term Time) 10:15am-11:00am
 WHERE: Football Pitch behind Lyminge Village Hall
 COACH: Mark Towse, Level 2 FA Coaching Award
 COST: PAY & PLAY £3 per session



GET IN TOUCH for more info & to reserve a space:

[facebook.com/Lymingefootiecubs](https://www.facebook.com/Lymingefootiecubs)

07793 026 010

mtowse@hotmail.co.uk

Food - Quiz Night - Help!!??

Following on from the recent success of The Lyminge Association's **Quiz Night** held in The Lyminge Village Hall (10 March), we have been asked to run another in the Autumn (possibly 6 October)....**BUT with a hot supper.**

Is there anybody in the area willing to volunteer to cook a basic meal (2 courses) for about 80 people with all costs met? We need to find this kind soul who will step up to the plate (excuse the pun!!) and offer to do this for us. We'll support this person with what labour is needed to produce the meal - e.g. peel the potatoes, wash up, etc!!

Please contact **Dave Hunt-Cooke** for further details or preferably with an offer - **01303 862928** or **davehc@uwclub.net**



Lyminge Hand Bells

The Lyminge hand bell ringers have been playing in and around Lyminge for well over 25 years. We love to attend fetes and local private celebrations throughout the year so if you think the sound of hand bells would suit a special occasion you are planning, then please contact us. We have an increasingly wide selection of music to choose from or just leave it to us. All we require at the venue is a large table for our bells and music, room for up to 11 players and a minimum donation of £40 for our current charity, the Nepali Children's Trust. A small contribution to traveling costs is also appreciated if we have to travel more than 5 miles from Lyminge. Please provide plenty of advance notice. Want more info or make a booking?

Please contact:

Ro Edmond 863201 or email welldorm@aol.com

Lyminge Churchyard Re-Excavation Project

In the 19th Century, the Rector of Lyminge discovered the remains of a masonry building in the churchyard. It is possible that it is the remains of the church built by St Ethelburga in the 7th Century. If so, this building is a very rare and important example of an early church. But records at the time were not good and the remains were reburied 90 years ago. So we do not know for certain what it was.

The Parochial Church Council has recently approved a plan to re-excavate the building and clarify what it is really. Dr Gabor Thomas who conducted the recent excavations in the village has been appointed Archaeological Director.

We are currently in the process of putting together a bid for funding from the Heritage Lottery Fund. This is a broad-based project designed to address how we communicate the whole history of the village to local residents and visitors alike. You can hear what is planned when Rob Baldwin, the project manager, addresses the Lyminge Historical Society on the proposal before the start of the main meeting on:

Tuesday 1 May at 7pm in the Tayne Centre, Church Road, Lyminge

The meeting is free to members and is open to non-members for a charge of £4 on the door.

There will be a further open meeting (at a date to be announced) to which the whole community will be invited. This will allow us to begin to put together a plan for the activities we will undertake and for which we will seek funding. This will also be your chance to register your interest in taking part in the project and expressing your views on how to get people involved. This is intended to be a community-based project, so we invite everyone to get involved.

If you are interested in exploring this important part of the history of the village, or would like to understand more about the scope of the project, then do come along to either or both meetings.

Rob Baldwin - rob.baldwin50@hotmail.co.uk



Park House Sanctuary Boarding Kennels & Cattery

Park House, Stelling Minnis CT4 6AN
Brick-Built Heated Kennels ~ Daily Walks
Reasonable Rates ~ Dogs must be fully inoculated
Heated Cat Chalets ~ Quiet Area Inspection Invited.
To book or for further information, call
01303 862622 or email lord.whisky@btinternet.com
www.lordwhisky.co.uk

Technical Help When You Need It!

Gadget setup - Internet help and training
Purchase advice - Security concerns (parental advice)
Help with email - TV remotes and tuning - PC & Mac
For all those little problems you want to sort.

Call Nigel on 01303 647220 or email
nigel@digitaldoctor.me

Experienced and qualified, 20 years in IT. Excellent rates.

Lady Painter

All aspects of painting including
furniture

Contact Christine for a free estimate
01233 750378 or 07866 002627
cfoxelmsted@yahoo.co.uk



Matthew Reynolds Window Cleaning Services

More than 20 years experience in Lyminge
and surrounding villages
For free estimates, please call
07975 510293

**HAND MADE CURTAINS, ROMAN
BLINDS AND SOFT FURNISHING
CURTAIN ALTERATIONS
TEL: VALERY WREN 01303 237755**

Andy Mannering Flooring

SPECIALISING IN AMTICO AND KARNDEN
LUXURY VINYL TILES

- Also safety flooring, rubber flooring, etc.
- Commercial and domestic work undertaken
- No job too small
- Free estimates and advice given
- Over 35 years experience
- Fully insured



Telephone: 0797 434 7248 or 01303 863095

Email: info@andymanneringflooring.com

Please visit my website for further information and
feedback **www.andymanneringflooring.com**

Rhodes Minnis Cat Sanctuary



REHOMING & BOARDING CATTERY

- Our Sanctuary takes in and rehomes 250 unwanted cats and kittens each year. A variety of cats are always available to suitable homes.
- Our Boarding Cattery is licensed to board 80 cats.
- We are open to visitors every day from 10-1 & 2-4. No appointment necessary.



Tel: 01303 862 243

www.rhodesminnis.co.uk

RECRUITING NOW



Would you like a flexible, rewarding career in care?
Are you looking for full time hours? Part time work to fit in
around your lifestyle? or to hours top up your weekly income?

- Benefits of working in Homecare with Nurse Plus-**
- Flexible Hours** - day, evening and weekend work
- Excellent Weekly Pay** - up to £10.37 per hour, plus holiday pay
- Rewarding career** - job satisfaction
- No experience needed** - Start a new career
- Free Training** - Qualification opportunities
- Staff Benefits** - Staff Lottery & Plus Points Scheme

Call Nurse Plus today: 01303 250200
www.nurseplusuk.com homecare@nurseplusuk.com

Help your child go far with Kip McGrath

Our qualified teachers create individual
tutoring programmes for your child, using
proven Kip McGrath methods.

- ✓ Maths
- ✓ English
- ✓ GCSE Maths specialist
- ✓ 11 Plus

Call today
for a FREE
assessment

kipmcgrath.co.uk



Folkestone & Hythe Centre
17, Manor Road, Folkestone, CT20 2SA
01303 249 100
folkestonehythe@kip-mcgrath.com



Editor: pb@pbarnes20.plus.com

Shuttlesfield Barn - 4* Gold - Self Catering



Rural location in Kent's AONB
Families and all pets welcome.
Two bedrooms, ensuite shower
and wet-room. WiFi. TV/DVD.
Holiday, short & relocation stays.
Heated outdoor pool (Summer)
CT18 8LB 01303 862729
Web: www.shuttlesfieldbarn.co.uk
Email: info@shuttlesfieldbarn.co.uk

Now In Your Area

Shutters by Sophisticated Living
Unbeatable on quality and price!
Call us for a no obligation quotation.

- Hardwood • Direct from the manufacturer • Made to measure
- All shapes & sizes for all windows • Wide range of styles
- 40+ colours & finishes • Installed by qualified craftsmen

Call: 01303 779595

Email: shutters@sophisticatedliving.co.uk

Shutters by **SOPHISTICATED LIVING**



**Lyminge
Pre-School**

**Ofsted
Outstanding**

Lyminge Preschool provides quality Early Years education and day care all year round for children aged 2-5 years. The Pre-School is run by a team of qualified, highly experienced and dedicated practitioners.

Lyminge Pre-school has a safe, stimulating and fun environment that provides support and challenge for all of the children's individual needs. We welcome all children from the age of two from all surrounding areas.

To arrange to meet the team, please call 01303 863149 (day) or email lymingepreschool@gmail.com and visit our website www.lymingepreschool.org.uk

Etchinghill Baby & Toddler Group

We are a friendly toddler group, which caters for babies and children from 0 to school age. Crafts, messy play, trikes, toys and a singing session are included each week. In dry weather there is also outside access for the children to play.

We meet on Wednesdays between 10am - 12noon at Etchinghill Village Hall. We charge £2 per family, 1st session is free. Tea/coffee and healthy snacks are provided.

If you have any queries please contact

Cait Byrne - 07850757571

Lyminge Baby and Toddler Group

We'd love you to bring your little ones along to our informal and friendly group for lots of fun. Come along and join us for craft, singing and lots more. We meet every Tuesday morning at the Tayne Centre 10.00-12.00, term time only. Cost: £2.00 per session, including refreshments for all.

Call: Any enquiries – **Jenny 0756 4130569**
Sarah 0798 4939220.

E-mail: lymingetoddlergroup@yahoo.co.uk

Rhodes Minnis Toddler Group

-needs new members



We need new members and so if you are looking for something to do with your 0-4 years old we would be pleased to see you between 10am - 12noon on Thursday mornings (term time) at Rhodes Minnis Village Hall.

Cost to include refreshments £1.50 per morning
For more information phone **Elaine** on **01303 863096**

Lyminge Library Opening Times

Monday	2 - 5pm	Tel: 03000413131 lymingelibrary@kent.gov.uk
Tuesday	9 - 12noon	
Wednesday	Closed	
Thursday	9 - 6pm	
Friday	9 - 12noon	
Saturday	10 - 2pm	

Editor: pb@pbarnes20.plus.com

Looking for homecare services?

Our experienced Care Assistants are on hand to offer support to the elderly, people with a learning or physical disability or other care needs for home services no matter your needs -

- ✓ One call a day to multiple calls
- ✓ Short term or long term packages
- ✓ Home from hospital assistance
- ✓ General assistance or complex care
- ✓ Weekday, weekends, days, night call times

NURSE PLUS

Contact your local branch today
01303 250200
www.nurseplusuk.com

Direct Payments Accepted



PIANO LESSONS FOR ADULTS

Have you always wanted to learn to play the piano but have lacked the opportunity, or faith in your own ability? Did you learn as a child and now regret having given it up?

I specialise in teaching adults and have developed a method which will enable you to progress quickly and with great enjoyment.

Please contact: Lise Cribbin, Bridge 01227 637709

**HYTHE
AQUA**

swim21
Club Accredited

**CLUB
MARK**

Adult Swimming with Hythe Aqua

- Can you swim lengths (25m)?
- Are you between 17yrs and 70yrs+++++
- Do want to improve your swimming skills?
- Do you want to improve your fitness?

We can help you improve under the direction of our experienced Swimming Coaches. You may want to simply improve your swimming skills and fitness, or even take part in competitions such as Masters Swimming, Triathlons or Open Water – we can help. Two sessions available each week, starting session Fridays at 8.00pm – Hythe Pool.

To book your place phone: 01303 862353 or checkout our website: www.hytheaqua.org.uk

Rhodes Minnis Village Hall

Charity No.800345

Rhodes Minnis Village Hall is located 2kms (1¼miles) from Lyminge and just off Longage Hill and Whitehorse Lane in Chapel Lane

The hall, which holds Hallmark accreditation, is ideal for children's parties, band practice, quizzes, meetings and fundraising events and has the capacity to take parties of up to 100. The rates include the use of the kitchen.

Rates

Mon to Fri £15 per session £40 all day
Sat & Sun £20 per session
£30 for evening session and £60 all day

Sessions

AM session 08.30 - 12.30
PM session 13.30 - 17.30
Evening session 18.00 - 23.45

There are special rates for regular users.

For all bookings and enquiries please contact:

Martin Fry 01303 863177 e-mail: book @rmvh.org.uk

"I am only one, but I am one. I cannot do everything, but I can do something. And because I cannot do everything, I will not refuse to do the something that I can do."

— **Edward Everett Hale**

bus times

for buses from Lyminge Post Office to Folkestone town centre via Etchinghill & Cheriton High Street

MONDAYS TO SATURDAYS except Bank Holidays

There are route 17 buses at 0705 (not Saturdays), 0749, 0909, 0934 (not Saturdays), 1004, 1034, 1104, 1204, 1304, 1404, 1514, 1614, 1619 (schooldays only), 1654 (schooldays only), 1719, 1749, 1834, 1929, 2113 and 2313.

There are also route 18 buses to Sandling Station & Hythe - for times see our website or call the number below.

SUNDAYS & BANK HOLIDAYS

There are route 17 buses at 0947, 1147, 1347, 1547, 1802 and 2002.

for buses from Lyminge (opposite Aberdeen House) to Canterbury city centre via Elham, Barham & Bridge

MONDAYS TO SATURDAYS except Bank Holidays

There are route 17 buses at 0727 (schooldays only), 0732, 0752, 0903, 0938, 1028, 1128, 1228, 1328, 1443, 1613, 1703, 1803, 2001 and 2201.

There are also route 18 buses to Canterbury via Stelling Minnis and Bockingham - for times see our website or call the number below.

SUNDAYS & BANK HOLIDAYS

There are route 17 buses at 0827, 1027, 1227, 1427, 1642 and 1842.

These times will operate from 3 April 2017.



timetable information **0871 200 22 33**
Calls cost 12p per minute plus your phone company's access charge
www.stagecoachbus.com

"Happiness is a choice. You can choose to be happy. There's going to be stress in life, but it's your choice whether you let it affect you or not."

— **Valerie Bertinelli**

Editor: pb@pbarnes20.plus.com

Lyminge Village Hall

Registered charity 28145

Large, refurbished, flexible hall with great facilities

From Theatre productions to Weddings, Craft Fayres to Childrens' parties – we've got it all covered!

Capacity: 200 people dancing / audience seating, 100 for table seating, 50 or less for meetings

Well equipped: stage, kitchen, small rooms, ample parking facilities, disabled access

Access to: playground, skate park, large playing field &

Situation: Rolling hills behind and the Church to the front.

Find out how we can help you with your next event:

BOOKING LINE: 07497625 741

EMAIL: info@lymingevillagehall.org.uk

Guideline prices

MAIN HALL HIRE ~ Fri, Sat PM £65

SMALL ROOM ~ £20

EXCLUSIVE ALL HALL ~ £320



Find us on Facebook
or follow us on Twitter @ Lymingevhall



ETCHINGHILL VILLAGE HALL HIRE FEES

The next time you are thinking of holding a function why not try Etchinghill Village Hall, which holds the highest Hallmark accreditation level (Hallmark 3), with its excellent facilities, including ample parking space. The standard hire charge for the main hall and kitchen are:

Weekdays £11.00 per hour

Saturdays £13.00 per hour

Sundays £13.00 per hour

During the winter months (1 November to 31 March) a Winter Supplement of £1.00 per hour is added to the above rates.

Special rates apply for Weddings and all day events with discounts on the above rates applying to Etchinghill Residents and Regular Hirers.

The use of a separate Committee Room is also available.

For all bookings or enquiries please contact:

The Duty Manager on 07514-758936

TAYNE CENTRE HALL HIRE

Previously known as the Lyminge Methodist Church Hall



Clayson Hall

1 October to 31 May (including heating) £9.50 per hour :

£34.00 per 4 hour session : £66.00 full day

1 June to 30 September

£7 per hour : £25.00 per 4 hour session : £48.00 full day

Rigden Room (Parlour) with heating, if required*

£7 per hour all year (*electric - over heaters).

Burren Room - storage only

Overnight Stays

1 June to 30 September £50; 1 October to 31 May £60

For any enquiries please call **07971 722 401**

EVENT PLANNER

This page is printed to give readers and organisers the opportunity of planning events without clashing with existing ones, which are already in the 'diary'. It is not intended as a means of advertising and we take no responsibility for errors or omissions. Acceptance is at the discretion of the editor. Please send your updates by email to pb@pbarnes20.plus.com or via methods outlined on Page 2. Location and name codes follow:

C&H: Coach & Horses; **ECC:** Etchinghill Cricket Club; **EVH:** Etchinghill Village Hall; **ERA:** Etchinghill Residents' Association; **ELVH:** Elham Village Hall; **ES:** Elham Square; **JC:** Jubilee Centre; **JF:** Jubilee Field; **KH:** Korf House; **LB:** Laing Bennett; **LBC:** Bowls Club; **LL:** Library; **LMC:** Lyminge Methodist Church; **LPC:** Lyminge Parish Church; **LSH:** Lyminge School Hall; **LVH:** Lyminge Village Hall; **LW:** Lord Whisky; **NP:** Nailbourne Court; **NVH:** Newington Village Hall; **PC:** Postling Church; **PH:** Lord Whisky, Park Hse; **PVH:** Postling Village Hall; **RVH:** Rhodes Minnis Village Hall; **RMC:** Rhodes Minnis Church; **RR:** Rigden Room; **SNL:** See News Letter for info; **SP:** Sibton Park; **TC:** Tayne Centre; **TF:** Tayne Field; **WF:** Well Field

One-Off Events

Date	Time	Event	Where	Tel. No.	Date	Time	Event	Where	Tel. No.
07-Apr	10am	Spring Stream Clean	WF	862508	16-Sep		Autumn Garage Safari		863537
08-Apr	3.30pm	Women's Rights in Anglo-Saxon England	LPC	862073	22-Sep		The Great War Victory Tea	LVH	
21-Apr		Spring Garage Safari		863537	06-Oct		Autumn Stream Clean	WF	862508
21-Apr	10am	Table Top Fair	RMVH	863660	06-Oct	7pm	Autumn Quiz	LVH	862928
05-May	10am	Lyminge Litter Pick	LVH	863737	End Oct		Celebrating Archaeological Digs Day	TF	
13-May	10.30am	Lyminge Fun Run	LVH		End Oct		Archaeological Update – Dr Gabor Thomas	LMC	
2/3 June	1pm	Postling Gardens			11-Nov		Remembrance Sunday	LPC	
15-Jun		Music on Friday - Memory Lane	LPC		24-Nov		St Nicholas Fayre	LPC	862073
23-Jun		Junior Dragon's Den	TC	863737	29-Nov		Switching on Christmas Lights		
21-Jul	7pm	Cantores Lyminge Prom	LVH	07813 071867	19-Dec	7pm	Cantores Concert		07813 071867
29-Jul	7.30pm	Rudes Theatre "Oberon's Cure"	TF	862743	21-Dec		Delivery of Christmas Presents		

GARAGE SAFARI - SATURDAY 21 APRIL

Weekly Events

Day	Time	Event	Where	Tel. No.	Day	Time	Event	Where	Tel. No.
Mon	10am	Open House	EVH	863394	Wed	10.45am	Singing For Health	JC	862364
Mon	10am	Bridge Club	LBC	863177	Wed	11.45am	Pilates	TC	07825109670
Mon	10.30am	Lyminge Larks (Singing)	LMC	07951 572920	Wed	7pm	French Conversation	KH	862972
Mon	11am	Cookery	JC	269602	Wed	7.30pm	Cantores Dominicae Choir	LMC	07813071867
Mon	2&3pm	Computer Buddy (need to book)	LL	03000413131	Thur	9.30am	Baby Rhyme Time	LL	03000413131
Mon	2.30pm	Knit and Natter	TC	863049	Thur	10am	RM Toddlers Group	RVH	863096
Mon	6.30pm	Ballroom/Latin/Salsa Dancing	TC	07966 751991	Thur	10am	Art Group - Morning	TC	211364
Mon	6.30pm	Judo Club	LVH	862946	Thur	11am	Shopping trips to Supermarket	JC	269602
Mon	7.30pm	Yoga	RMVH	07977503897	Thur	2pm	Art Group - Afternoon	TC	862972
Tues ¹	10am	Baby & Toddler Group	TC	863274	Thur	7.30pm	Ballroom and Salsa Dancing	EVH	07967979610
Tues	10am	Baby Signing	EVH	07800737936	Thur	6.45pm	Short Mat Bowls	LVH	863842
Tues	10.30am	Art Class	JC	269602	Fri	10am	Feel A Fairy Tale Sensory	EVH	07800737936
Tues	11.15am	Chairbics	JC	269602	Fri	10am	Talk Time	LL	03000413131
Tues	11.15am	Feel A Fairy Tale Sensory	EVH	07800737936	Fri	11.15am	Baby Signing	EVH	07800737936
Tues	6.45pm	Short Mat Bowls	LVH	863842	Fri	11am	Seated Exercise	JC	269602
Wed	10.15am	Mature Movers (Exercise)	TC	862873					

Monthly Events

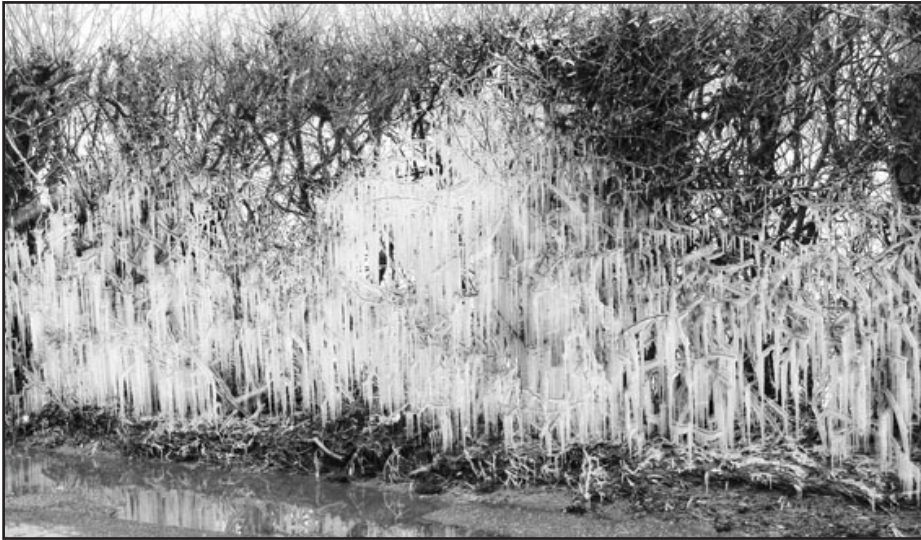
When	Time	Event	Where	Tel. No.	When	Time	Event	Where	Tel. No.
3rd Mon	7.30pm	Etchinghill Cinema	EVH	863333	2nd Wed	10.30am	Mothers Union	NP	862221
Last Mon		Parish Council Meeting	SNL	07715221705	4th Wed	2.30pm	RM Circle	RVH	862913
1st Tues	10.30am	Reading Group	LL	03000413131	Last Wed	7.30pm	Quiz Night	C&H	862694
1st Tues	11am	Reminiscence	JC	269602	1st Thurs	7.30pm	British Legion, Elham Branch	St Mary's Hall, Elham	862508
1st Tues ³	7.30pm	LHS Talk/Event	TC	862972	4th Fri	7.30pm	Beetle Drive	RVH	862616
3rd Tues	9.45am	Family History	LL	03000413131	Last Fri	1.30pm	Team Quiz	JC	269602
3rd Tues ³	7.30pm	Gardening Society	TC	862264	1st Sat	10am	Village Market	EVH	863819
Last Tues	10.30am	Poetry Group	LL	03000413131	2nd Sat	10am	Postling Ch. Coffee Morning	PC	863536
1st Wed	10.30am	Lyminge Friends	RR	862598	3rd Sat	9am	Saturday Market	TC	862164

¹ In term time only ² Except Jan and Feb ³ Except Jan, Feb, and trip in Aug ⁴ Except Aug and Dec

Out and About

Do you have any photos of local events or local groups in action, please call 01303 862699.

Give your group a FREE plug!



Did you see this natural wonder of icicles from the water thrown up by cars passing the pothole in the road near the old Etchinghill Cricket Club pavilion?

Beautiful, but the very low temperatures did make the road somewhat dangerous!



▲ **Lyminge Friends** enjoying an illustrated talk by Derek Smith [right] all about the Kent & East Sussex Railway.

▲ One of Derek's pictures, an Austerity Class 0-6-0



▲ The 100 year old printing press in action at **The Elham Valley Line Trust** which opened for the new season on Saturday 24th March. You can even have a go yourself with one of the hand-operated presses when the Print Shop is open - usually one day each weekend during the season.

Mystery Photo



Last month's picture was part of The Lyminge Association's noticeboard in the village car park.

Have a go at this one - where have you seen these bars?



▲ The old telephone box at Rhodes Minnis which was recently purchased by the Parish Council now has a new lease of life as a miniature library!

Financial Planning

David Gridley - Chartered Financial Planner

Range of quality advice from a fully qualified adviser:

- Pre- and Post-Retirement Planning
- Investment Planning
- Inheritance Tax Planning

For further information, please contact our Lyminge office

David Gridley APFS

Tel: 01303 863959 Email: davidgridley@sjpp.co.uk

Local Ironing Lady

Smart,
Friendly Service

smartpress
SERVICES

Free delivery & collection – min order £10

Call or text - 01303 864229 / 07702 321686
tash@smartpressservices.com

OIL BOILER SERVICE

Professional Friendly Service. Prompt Response to Breakdown Calls. Over 40 Years Experience.

For Routine servicing, emergency breakdown calls and commissioning, contact:

P & V QUENBY LTD (Est 1987)

01227 760428

www.oilboilerskent.co.uk

T. Metcalfe Fencing Contractors

Approved Expert Installer for Jacksons Fencing

Established over 30 years

Fully insured - Highly experienced teams



Panel fencing, gates, decking, pergolas, post & rail, stock fencing, security, landscaping & tree surgery.

01303 840201 07790 290 155

metcalfefencing@btinternet.com

Proprietor - Derek Burr,
Ash Ridge House, Elham



OAK
creative



we're at Newingreen, call for a chat on 01303 812848

www.oakcreative.net

Advertising
Branding
Digital Design
Illustration
Marketing
Print Design
Web Design & Development

Are you running out of space and need an extension?

Or perhaps you would like to remodel your house?

Friendly local architect available to help you realise your dream home.

For a no-obligation consultation,

contact Salma Barwani at

ruddbarwaniarchitects@gmail.com

or call 07770 196190



Dog walking, pet and smallholding sitting, dog day care, dog accommodation & dog playground and so much more....!!

Free (no obligation) consultation.

CV & references available.

Fully insured and security screened.

Mobile: 07582407637 Email: susannahparkin@googlemail.com

Website: caninecare.thespringrise.co.uk

Essential Beauty

reflexology : aromatherapy : collagen mask facials
non-surgical perceptor : facials : cuccio gel varnish
manicures & pedicures : waxing & eyelash/brow tinting

Therapist with 20 years experience

Call Janene Moat 01303 840052

The Limes, High St, Elham.

Free eyebrow tidy for new clients.



Mini Digger and Operator for Hire

Call Mick for a competitive quote

Mobile: 07979 881873

Landline: 01303 862079

Email: mickattwell@btinternet.com



ASHTON
TREE CARE

07929 627622 • 07769 908027

OLLIE@ASHTONTREECARE.CO.UK

City & Guilds
NPTC

ALL WORK FULLY INSURED

HEDGE CUTTING • STUMP GRINDING • TREE SURGERY

SPEARPOINT
TREE SERVICES

All Aspects of Tree Work Undertaken
NPTC Qualified
Fully Insured
Please call **Shane** for a Free Quote
07963 203564 or **01303 621992**



Sarah de Rougemont

Craftsman/Co-ordinator

UPHOLSTERY

All commissions considered
01227 455841 or 07973 377817



Bookkeeping Services

www.aabookkeepingservices.co.uk

Bookkeeping • Financial Accounting and Accounts Preparation for Sole Traders and Partnerships
Word, Excel, Outlook, Sage and VT Final Accounting Software Self-assessments and VAT returns

Over 10 years' financial experience. Fixed prices available or hourly rate £15 per hour

Anita Adams BSc (Hons) AATQB MAAT Contact: 07891 135766 or 01303 864254 or anitaadams@live.co.uk

COUNTRY FARE

CATERING SERVICES

Country Weddings, Christenings and All Family Gatherings, Corporate Lunches, Seasonal Parties & Celebration Cakes

Sally Burr 01303 489795 07814 610995
sallycountryfare@gmail.com

FRESHLOOK GARDENS

Regular lawn mowing service. Garden design. Hard and soft landscaping. General garden work, fencing and decking. Turfing hedge cutting, small and medium tree work. Water features, ponds and patios.

For free quotation ring **Danny Scott**
01303 242140 or 07795510093
mrdanscott89@gmail.com

Established since 1990. Fully insured.

Filehurst Associates

Tel: 01303 239990 E: info@filehurst.co.uk

Domestic & Business Removals - UK & France
Long or Short Term Storage
Business Document Storage
Call now for a no obligation quote



colebrooksturrock.com
still THE local and regional specialist...
SALES & LETTINGS
Call now for your free market appraisal
01303 840422
elham@colebrooksturrock.com

Sandwich	Bridge	Minster	St Margarets At Cliffe	Walmer	Saltwood	Elham	Hawkinge
01303 841119	01303 841119	01303 841119	01303 841119	01303 841119	01303 841119	01303 841119	01303 841119

Computer Repair & Support

01303 241325
07968 129902
PCs, MACs, Laptops, Tablets & printers,
Upgrades & Repairs, Internet & Email, virus removal,
Office Setup, Backup & Recovery & much more ...
Tuition available by a qualified tutor.

Usual Fee £55

Web sites built & hosted from £10 per month
See www.computers-in-lyminge.co.uk for details
Ring Tony for a fast and friendly service



Local Tradesman

J Tappenden

Established 36 years

Painter/Decorator/Builder

01303 862467

077755 78008



Alan Croucher

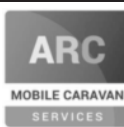
Caravan Engineer

07921 480919 - 01303 863194

Caravans & Motorhomes "WE COME TO YOU"

www.arcmobilecaravanservices.com

"Your manufacturer's warranty is safe in our hands"



Jackson Plumbing Property Maintenance

Complete bathrooms and tiling
No job too small. Special rates for OAP's.

Telephone: home/evening 01303 270691
or daytime 07773 089398 or 07864 929826

M. J. Athrow

BUILDER & DECORATOR, EST. 1965
GENERAL MAINTENANCE

Qualified and Insured. Free estimates
Telephone: 862616 Mobile: 07976 306665
Email: mick@athow.co.uk

SIX MILE GARAGE LTD

Stone Street, Stelling Minnis, Canterbury, Kent CT4 6DN

- Car and light commercial servicing
- Class 4 and 7 mots and repairs
- Car and light commercial accident repair centre (insurance approved)
- Diagnostics bay with latest equipment
- Tyre bay with four wheel alignment and balancing
- Air conditioning servicing

Tel. 01227 709214 or 01227 709491, Fax 01227 709331
E-mail: office@sixmilegarage.co.uk

Trevor Law Electrical Installations

Serving Elham Valley for 30 years
Part P Registered

01303 862348
07850 970087



J. V. Services

Servicing and Repairs:

- Garden Machinery
- Ride on Mowers
- Trailers & Horseboxes
- Quad Bikes
- Classic Cars

(Free collection and delivery)

Mobile Mechanic

Serve/Repair/Full Restoration:

- Compact Tractors
- Vintage Tractors
- Classic Tractors

Mobile: 078 0300 3047
john@jvserviceskent.com



JBS BUILDERS

Specialising in Driveways, Brickwork, Patios, Fencing, Landscape Gardening. Tree work undertaken (lopping, felling and clearing).

General household repairs, painting, plastering, power jetting & cleaning.

No job too small!! All work guaranteed and insured.

For free advice and quotations please call: 07825 168010/ 01303862361 (anytime)





DILTON MINI SKIP HIRE

Ballast, Hardcore, Sand
and Topsoil Supplied
REGISTERED WASTE CARRIER
01303 812448 or 07799 433754

'Helping you enjoy your garden'

CRT Gardening

Knowledge of general gardening, including lawn care,
hedge trimming and cutting, vegetable garden work, fencing
installations and repairs, small and medium size tree work and
ongoing maintenance of all of them.
Heavy-duty work is also undertaken.
Free estimates; fully insured. Karl Dodd 07967442518
Email: karl.dodd@live.co.uk www.crtgardening.com

Red Dragon I.T. Ltd.



- Windows, Mac & Linux Systems
- PC Health Checks
- Wired & Wireless Networks
- Website Design
- Graphic Design

T: 01303 723456 | E: info@rdit.co.uk | www.rdit.co.uk
The Old Granary, Hanover Mill, Church Rd, Merham, TN25 6NU



KW CONSTRUCTION
PLASTERING & RENDERING SPECIALIST

ALL GENERAL BUILDING INCLUDING:
ROOFING, BRICKWORK, TILING, PATIOS,
LANDSCAPING, SCREEDING, GROUNDWORK,
DRAINAGE, EXTENSIONS, RENOVATIONS,
REPAIRS & MAINTENANCE.

30 YEARS EXPERIENCE, COMPETITIVE RATES,
A FULLY INSURED, PROMPT & RELIABLE
HIGH QUALITY LOCAL BUILDER

KENNY 07743488361



Laing Bennett
INDEPENDENT ESTATE & LETTING AGENTS
PHILIP A CHAPMAN

With our excellent local knowledge, service
and two local offices we will get you moving

The Estate Office 8 Station Road Lyminge Kent CT18 8HP
T 01303 863393 E lyminge@laingbennett.co.uk
134 High Street Hythe Kent CT21 5LB
T 01303 264846 E hythe@laingbennett.co.uk

www.laingbennett.co.uk



Hawkinge
Veterinary Surgery

Veterinary Surgery

Opposite Lidl supermarket

A new independently owned veterinary surgery for small animals.

Separate waiting, consultation & recovery rooms for cats/small pets and dogs.

Opening hours: Monday to Friday 08:00-19:00

Saturday 08:30-13:00 24 hour emergency service

Hawkinge Veterinary Surgery 9b Defiant Close Hawkinge

CT18 7SU Tel: 01303 764190

www.hawkingevetsurgery.co.uk

hawkingevetsurgery@gmail.com

SNIPPERS & CLIPPERS UNISEX HAIR SALON

✂ APPOINTMENT NOT ALWAYS NEEDED

✂ WEDDING & SPECIAL OCCASION

✂ GENTS WELCOME

✂ FREE WIFI

✂ SHELLAC NAILS

4 Station Rd, Lyminge,
Folkestone,
Kent, CT18 8HP

01303 647 222
info@snippersandclippers.co.uk



SCRUBBERS - Est. 1988

THE HOME AND COMMERCIAL CLEANERS

One off, regular or moving day 'Blitz'

Oven cleaning - Ironing

Carpet cleaning and more...

For a friendly and reliable service

Free Estimates

Tel: 01303 249288 or 07834 128671

Dennis Huntley

Installer of wood and multi-fuel stoves, heating engineer,

chimney sweep

Lyminge 01303 862 343

Mobile: 07850 784 365



Lou Lloyd Carpenter

loulloyd@rocketmail.com
07984 426214

**Kitchens, Flooring, Wardrobes,
Doors, Decking and more!**



CEDAR HOME MAINTENANCE General Builders and Roofing Specialist

Roofing * UPVC windows/doors * Kitchens/bathrooms
Plastering * Electrical installations * Plumbing
Call now for a free, no obligation quotation. All work carried out
by qualified tradesmen. Fully insured - all areas of Kent covered.

Mobile: 07968197613 Office: 01303 230787

cedarhm@hotmail.co.uk & www.cedarhomemaintenance.co.uk

HOLDEN PLASTERING

All aspects of Plastering
Smooth-over Artex - a speciality.
Coving, Tiling and Plumbing

Phone JAMES for free estimate or advice on:
01303 770449 07773 262970

Tressenden Designs

A seamstress and costume maker with 8 years of experience.

- ♦ Clothing alterations ♦ Repair work undertaken ♦ Made-to-measure; create a bespoke piece for those special occasions
- ♦ Modern and vintage designs ♦ Costumes, ball gowns and wedding dresses

For more information or a quote please contact Amy on: Mobile: 07853 202304 Email: amy.louise.ford@hotmail.co.uk



D.M.B. Plastering

All aspects undertaken
*Interior. Exterior. Plastering. Rendering.
Coving. Ceilings Wall. Floors*
Finest quality assured. CSCS Certified.
30 years experience.

Free estimates. Reliable service. Fully insured.
Call **David** on **07818 607209**

P Davis + Co

General Builders and Roofing Specialist
All work undertaken
Call for free estimate

Tel: 01303 863049 or 0784 6769643

Personal Computing

For straightforward I.T. advice, solutions
and training

Contact: **Steve Ashman**
862869

sra@ashman-consulting.co.uk

B.M. Plumbing & Maintenance Services

Local Lyminge Tradesman

Plumbing and heating works. Complete bathroom
install including tiling. General building maintenance
undertaken. No job too big. No job too small.

Cheaper rates for senior citizens



07890854128 Benmillsplumbing@hotmail.co.uk

Wilco Plumbing & Heating

Central Heating Installations & Repairs
Gas & Oil Boiler repairs & replacements
5 Year Guarantee on Worcester Bosch Boilers.
Local Experienced Engineer, Emergency plumbing 24/7 call out
Registered with the Institute of Plumbing
Gas Safe Registered-OFTEC Registered
01303 862173 07860 452640
paul@wilcoplumbing.co.uk www.wilcoplumbing.co.uk

TOBY'S TREE SURGERY

THINNING - REDUCING - MAINTENANCE - FELLING
TURFING - STUMP GRINDING - GARDEN CLEARANCE
HEDGE CUTTING - FENCE REPAIR
Professional Friendly Service

FREE ESTIMATES - FULLY INSURED

Contact **Toby Griggs:**
07854 098 395

or (01303) 489795 or tobystreesurgery@gmail.com

House Clearance covering South East Kent.....and beyond!

CAROL CREES CLEARANCES



- Est. over 30 years
Full/part house clearance
Fair prices paid
Antique/Vintage/Retro/Modern
Registered rubbish carrier

Contact **Simon Cullen** on **07745 421680** or **sijnzo@aol.com**

East Kent Foot Care

Mobile Foot Health Practitioner

Jo Shapter BSc (Hons), MCFHP, MAFHP

Treating and managing common foot problems,
corns, callus, verrucae, thickened nails,
toe nail management, fungal problems,
diabetic foot assessments etc.

Call: 07745 532075

Member of the British Association of Foot Health Professionals



Total garden care for all your needs

TIM MILLETT

Grass Maintenance, General Gardening, Small & Medium
Size Tree Work, Stump Grinding and Wood chipping
Fencing Repairs & New Installations
Turfing, Hard & Soft Landscaping
Free Estimates - Fully Insured

01303 863676 07752 880583

Email: **info@tmhorticulture.co.uk**

THE BIG LITTLE BATHROOM COMPANY



COMPLETE BATHROOM SUITES • BESPOKE CAST IRON RADIATORS
TAPS • SHOWERS • TILES • ACCESSORIES • TEA & COFFEE

CANTERBURY ROAD, ETCHINGHILL, KENT CT18 8BS
sales@theblbc.co.uk • 01303 864349 • www.theblbc.co.uk

N.P.C.

Domestic Appliance Services

Service and repair of washing machines, tumble driers,
dishwashers, cleaners and small electrical work.

For a prompt and friendly service

Call **Neil Collard** 01303 892234 or 07798716044
or Google me on Yell.com

Auto Economy Centre
Fully equipped Mechanical Repair & Service Centre
with the latest diagnostic equipment
MOTs £44.95

01303 863656

Orchard Garage, Canterbury Rd, Etchinghill
www.autoeconomycentre.com

Old English Pine

Antique, repro pine, oak and French-style painted furniture with beautiful and reasonable priced accessories to make
your house a home. Bespoke pine units made to order. Huge shop - over 3 floors. Open 7 days a week.

Tel: 01303 248560 www.oldenglishpineinkent.co.uk 100/102 and 90 Sandgate High Street, Sandgate