

THE LYMINGE NEWSLETTER

For the communities of LYMINGE, ETCHINGHILL, RHODES MINNIS and POSTLING

January 2018

Produced by
THE LYMINGE ASSOCIATION
www.lyminge.org.uk

News from The Lyminge Association



Many BIG '**THANK YOU**'s to all those who contributed to the Christmas effort - those who put up the lights and Christmas trees, to Laing Bennett who collected the presents and those who helped Santa deliver them, to Paul Marsh and the charity lights in Mount Pleasant Close, to Sam Cunningham and those who provided Christmas Day lunch in Lyminge Village Hall.... the list is endless and shows what a loving and caring community we live in.

HAPPY NEW YEAR TO YOU ALL

Dates for your diaries:

Musical Evening - '*Step Into Spring*' Hythe Town Concert Band - 24th February 7.30pm

Lyminge Village Hall. £6 per person

Quiz - 10th March, Lyminge Village Hall with American-style supper and BYO drink

China China

中國城



Chinese New Year



The Year of the Dog



Come and Celebrate 2018 with us.

Special 5 course meal

13th and 15th Feb. Chinese New Year Celebration

£29 per person

includes Lion Dance & and Fireworks

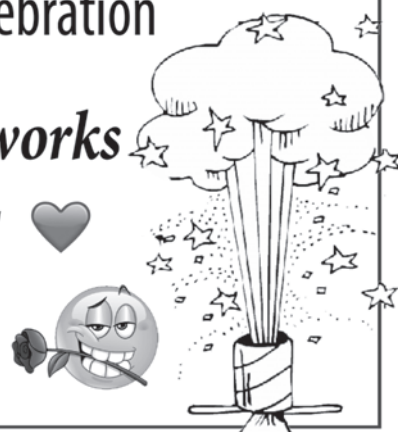
and on

14th Feb. Valentine's Day Special

£18.95 per person

To book your table please pop in or phone 01303 863 288 or 07539 200 804,

email - jackey@chinachinalyminge.co.uk





LYMINGE PARISH CHURCH SERVICES & ACTIVITIES

Church Website: www.lymingechurch.co.uk

SERVICES

Sun 7 th Jan	8.00am	Said Holy Communion
	11.00am	WOW (Ways of Worship)
Sun 14 th Jan	8.00am	Said Holy Communion
	10.45am	Sung Eucharist
Sun 21 st Jan	11.00am	Family Communion Service <i>with children's activity area</i> this is a joint service with the Methodists to start the Week of Christian Unity
	6.00pm	Evensong
Sun 28 th Jan	NO SERVICE at the Parish Church 11.00am at the Methodist Church joint service to mark the end of Week of Christian Unity <i>followed by lunch in the Tayne Centre</i>	
Sun 4 th Feb	8.00am	Said Holy Communion
	11.00am	WOW (Ways of Worship)

ACTIVITIES THIS MONTH

Mothers Union

Wednesday 10th January at 10.30am
In the lounge at Nailbourne Court
Contact Sue Rawlings for details

PADDLESWORTH PARISH CHURCH SERVICES

Sun 7 th Jan	6.00pm	Sung Evensong
Sun 14 th Jan	NO SERVICES	
Sun 21 st Jan	9.30am	Holy Communion
Sun 28 th Jan	NO SERVICES	
Sun 4 th Feb	6.00pm	Evensong

LYMINGE METHODIST CHURCH

Visitors are very welcome to join us at our weekly service at **11am** and invited to share fellowship afterwards with a cup of coffee/tea.

7th January - 10.15am Elham Valley Covenant Service
14th January - Mr Richard Blackwell
21st January - United Service at Parish Church
28th January - Mr Ian Couchman
4th February - Rev. Robin Blount



RHODES MINNIS CHURCH

This small Chapel in beautiful countryside holds a weekly Sunday Service normally at **9.30am** followed by coffee and biscuits. A warm welcome is extended to any visitors.

7 January - NO service (10.15am Elham Valley Service at Lyminge)
14 January - Mr. Richard Blackwell
21 January - Mrs. Joy Brumwell
28 January - Mr. Ian Couchman



POSTLING CHURCH SERVICES

7th January 9.30am. Family Communion
21st January 8.00am Holy Communion



Saturday Morning Market in the Tayne Centre will resume in March.

21st to 28th January: Week of Christian Unity
21st combined service in the Parish Church at 11am
28th combined service in the Methodist Church at 11am
Lent Lunches will start on Friday 16th February



"Our human compassion binds us the one to the other - not in pity or patronisingly, but as human beings who have learnt how to turn our common suffering into hope for the future."

— Nelson Mandela

Lyminge Newsletter

Terms & Conditions: Copy deadline for next edition - 18 January 2018

Please email your copy in to the editor (pb@pbarnes20.plus.com). Your payment must be received before your article or advert can appear in the Newsletter. Please leave your payment along with your name, organisation, telephone number and copy of your ad in a sealed envelope at the Lyminge Post Office or at the Lyminge Library.

Business adverts cost £9.50 per month or £95.00 per year. **Personal and charity adverts and articles** from £3 per month, or £30.00 per year. The annual rate offers 12 entries for the price of 10. Please make cheques payable to 'The Lyminge Association'. If you do not have email, a typed paper-copy may be left with the payment.

Lyminge Association accepts no liability for the accuracy of the advertisements or subsequent actions arising in conjunction with advertisers in the newsletter.

Further details from Peter Barnes (editor) on 01303 863737

Sat 3rd feb
7.30pm

£5pp
BYO food & drink

Prizes for
Best
Dressed
Table

Ridiculously
good raffle
prizes!



Tickets from **Laing Bennett**.

All proceeds go to refurbish **Lyminge Village Hall**. Registered Charity 28145



Snippers and Clippers Barbers

We would like to welcome Richard, our new barber to our team in Lyminge. He has 32 years of experience cutting gents hair.

While Richard is winding down his business in London, the barbershop will be closed on Wednesdays throughout January.

We will be offering 10% discount plus our loyalty scheme

Monday	9am - 5.30pm
Tuesday	9am - 5pm
Wednesday	CLOSED
Thursday	9am - 5.30pm
Friday	9am - 6pm
Saturday	9am - 4pm

4 Station Rd, Lyminge, Folkestone CT18 8HP
01303 647333

Appointments available but not necessary



14th February 2018 Valentine's Day

7.30pm Lyminge Village Hall

A light-hearted entertainment looking at **LOVE through words and music!!**

Bring your own nibbles and drinks/bubbly to celebrate in style!!

Tickets - £8 per person; available from 1st February from Laing Bennett who have kindly agreed to sell them.

This event is to raise funds for The Good Child Nursery School in the Gambia

Lyminge Friends - January 2018

Happy New Year Everyone.

In December, John & Jane Buss gave their talk on *The Goodwin Sands: The Great Shyppes Swallower* and afterwards we had our Winter Lunch Party with Secret Santa and Raffle. On Sunday 31st December, we met for our Annual New Year's Eve Lunch in China China.

On **Wednesday 3rd January**, we have a talk from **Vanessa Carr** entitled **The Craze for Collecting Crested China**, and this will be followed by our **January Pub Lunch** in the **Coach & Horses**. Remember to book your place.

In **February**, on **Wednesday 7th**, we are replacing our normal meeting with an afternoon tea party in the Coach & Horses. Places will need to be booked - more details in the January meeting or call 862015.

Meetings are 10.30am - 12.30pm in the Rigden Room of the Tayne Centre. Entry for 2018 is £3.00 which includes light refreshments. We are a friendly social group and welcome new members so just drop into one of our meetings, or, if you'd like to talk to one of us first, please call 863500.



**The Jubilee Centre, Everist Court
Station Road, Lyminge, CT18 8HQ
Tel: 01303 269602**

HAPPY NEW YEAR!

The **Clients' Christmas Party** was great fun and enjoyed by everyone who attended. Thank you to everyone who helped to make it possible.

Do you suffer from the Winter Blues or are you feeling a little lonely? When you come to our Centre, you could meet old friends or make new ones, talk to folk who understand where you are coming from, sing the old, and not so old, songs, enjoy games, quizzes and bingo, visit the chiropodist, have a massage or get your hair done. Or, you could sign up to our Computer Course to help you use your laptop. You could join us for a delicious lunch which consists of a fruit juice, main course and dessert followed by tea or coffee. The Menu changes daily and there is always an alternative available for specific dietary needs. Our first rate Home Meals Delivery Service is available every day of every week and **while this is an excellent service we would prefer to see you in the Centre so you can be with others and enjoy all we have to offer.**

You could get help to resolve housing and benefit entitlement problems or go shopping on one of the regular trips to the supermarket. These are the sort of things that help to fight depression as loneliness is a major contributory factor. It can be lovely being alone sometimes to get some peace and quiet but being lonely is a very different animal and we do all we can to fight against that.

If you know someone who needs us, for whatever reason, for however long, the sooner you contact us and let us start working our magic, the better!

Winter weather appeal - we are looking for local people who own 4 wheel drive vehicles and would be willing to give an hour or two of their time in the event of snow days. Should the disruption be severe or last more than a couple of days we would contact you and see if you are able to help us reach those who need us, a member of staff would accompany you. Please contact us if you can help.

Could you help with Snow Clearing? In the event of snow, please come to the Centre to join Staff and Volunteers in helping to clear snow this winter - we have plenty of shovels!

Do you have any unwanted presents? Please consider donating them to be used in our raffles or sale in our Charity Shop. Thank you.

The Café and Charity Shop will open on Saturdays, weather permitting.

Dates for your Diary:

Tai Chi is on a Monday at 9am to 10am. Tai chi is a non-competitive martial art known for both its defence techniques and its health benefits. As an exercise, it comprises gentle physical exercise and stretching with mindfulness. It has been shown to improve balance control, fitness, and flexibility. **£5 per session.**

The **Communion Service** is at 11am on the **first Thursday in the month**. Contact us if you need help with transport.

Call in for our Activities leaflet which has a timetable of all our activities...

For more information about any of our activities or services please call **01303 269602** and ask for **Matthew** or **Sue** or why not just pop in and see us?

Rhodes Minnis Circle

Growing up in the Forties was the subject of our talk in November when John and Jane Buss reminded us of food rationing and the shortage of coal after the 2nd world war.

There were celebrations and street parties, however, children played with home-made toys, and everyone gradually returned to normal despite the severe winter of 1947.

Some of us did quite a bit of reminiscing! The competition was won by Ann Laker with Margaret Chambers 2nd, Molly Walker 3rd and Pat Kent 4th. There is no meeting in January, but on February 28th Eileen Jennings will give us a talk on A Walk along the Saxon Way. Visitors will be very welcome (1st visit free!). We meet at Rhodes Minnis Village Hall at 2.30pm on the 4th Wednesday of the month - for further details please contact 01303 862913

District Councillors Update - January 2018

From your District Councillors

Well done to everyone involved in the Christmas events taking place across the parish and for the Christmas decorations provided by both individuals and village organisations. On 26 November Susan switched on the Christmas lights on the very fine tree planted some years ago by Etchinghill Residents Association. Shepway Brass provided Christmas music and the elves of ERA provided Christmas refreshments. Susan was also able to attend the Age UK Christmas Fair on 24 November, the St Nicholas Fayre in Lyminge church on 25 November and the Christmas Quiz in Etchinghill on 2 December. This was just a fraction of the activities in the village and it is good to see the effort made to reach everyone in our community.

We have received complaints about dog fouling from across our ward. It is sadly the case that there is more dog fouling in the winter months when people think they won't be seen. If there is a regular time and place that fouling occurs then do let the Shepway dog warden know so that these antisocial people can be caught and fined. (Bagged dog waste can be disposed of in any of the public litter bins; so there is no excuse not to pick up.)

Shepway District Council is responsible for monitoring air quality and has recently added an extra monitoring station at Kennet Lane in Stanford to the 12 that are already in place across the district. The latest quarterly report shows our air quality to be well within the levels set by DEFRA for compliance. You can see more information at www.kentair.org.uk

Shepway District Council has also just published a Charter for Otterpool Park which sets out in more detail its aspirations for the garden town. It takes on board some of the comments made during consultation and can be seen on www.shepway.gov.uk. The district council has already received around £1m in a variety of grants from the Government for the planning costs for Otterpool and now is applying to the Design Quality Fund for help to produce the design guide. A design guide tells house builders what is expected of them and sets standards so that we get good design not standard boxes.

Shepway District Council offers a free business advice service through specialists 'Let's Do Business' to help Shepway residents start up or expand their business locally. One-to-one sessions with trained and experienced business advisors are available on 10 and 24 January, 7 and 21 February, 7 and 21 March and 4 and 18 April at the Civic Centre in Folkestone. Contact Shepway direct or via us.

We have just awarded a £500 grant to Postling village hall for new flooring and still have a small amount of funding for projects in our ward. Do please contact us where you think we can help. Susan also agreed a KCC grant of £4,000 to Lyminge Parish Council towards the cost of a new bus shelter at Yew Tree Cross. Susan attended the Lyminge parish council meeting on 11 December and both Jenny and Susan went to the Postling Parish Council meeting on 29 November. As well as attending meetings we are also happy to deal directly with residents who would like our help. If you are emailing do please give your address and please would Mr Greville (?) re-send his email or ring again as the number he left in his telephone message is unobtainable.

We wish you all a Happy New Year.

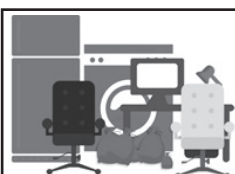
Jenny Hollingsbee (Jenny.hollingsbee@shepway.gov.uk 07887918458) **Susan Carey** (susan.carey@shepway.gov.uk 01303 670561) - ward councillors for North Downs West, Shepway District Council



Lyminge Dramatic Society

Join us for *Plays in the Pub* on 15th January at 7.30pm. The Coach and Horses, Lyminge, very kindly lets us use their back room. *Plays in the Pub* have been going for some time now and we have read a variety of plays from Joe Orton to J.B. Priestley. This is always a very warm, convivial and friendly evening open to all. Come and join us, have a drink, and see if it is something that appeals to you.

LDS wishes everyone a *Happy and Healthy New Year*.



House Clearance covering South East Kent.....and beyond!
CAROL CREES CLEARANCES - Est. over 30 years
Full/part house clearance. Fair prices paid. Antique/Vintage/Retro/Modern
Registered rubbish carrier
Contact **Simon Cullen** on 07745 421680 or sijnzo@aol.com



Etchinghill Update January 2018

ETCHINGHILL RESIDENTS' ASSOCIATION – Dave McCombe 07939 076617

ETCHINGHILL CINEMA CLUB is showing the film *'Their Finest'* (12), starring Gemma Arterton, Sam Claflin and Bill Nighy, on Monday 15th January at Etchinghill Village Hall. Doors open at 7pm for a 7.30 pm start. *'The year is 1940. With the nation bowed down by war, the British Ministry turns to propaganda films to boost morale at home. Realising their films could use "a woman's touch" the ministry hires Catrin Cole (Gemma Arterton) as a scriptwriter in charge of writing the female dialogue.'*

New and existing members are welcome. The entrance fee of £5.00 includes admission, refreshments and a lucky draw ticket. Film shows take place on every third Monday of the month, with the exception of December when there is no screening. For further information, please visit www.etchinghill.info

ETCHINGHILL VILLAGE HALL – John White 863819

VILLAGE HALL CHRISTMAS HAMPER: The Christmas Hamper draw took place on Saturday 16th December 2017, and was won by Sylvia Williams and her grandson Cameron, who was visiting from South Africa (Ticket Number 36).

ETCHINGHILL VILLAGE HALL MARKET: The first market of 2018 will occur on Saturday 3rd February starting at 10am.

OPEN HOUSE: Held every Monday between 10.00 – 12.00noon. Our first meeting of 2018 will be on Monday 8th January. Do come along on Monday 15th and try a game of Bingo. If that is not your style, why not join in with the other amusements on offer, or just have a cup of tea/coffee and have a chat. All welcome.

THE COUNTRYSIDE ALLIANCE, RURAL OSCARS AWARDS have been announced and the *The Ark Bakery, 2 Ark Cottages, Canterbury Road Etchinghill Folkestone Kent CT18 8DE*, has been nominated to win one of the awards.

National winners will be announced at the House of Lords in March 2018. Congratulations to Hester and her team for getting so far especially as they are a fairly new enterprise. If you haven't tried some of her bread/rolls etc., you do not know what you are missing!

To include an entry in the Etchinghill Update please contact Barbara on 862873 or barbara.newing@hotmail.co.uk

Hythe Town Concert Band - 24th February 7.30pm Lyminge Village Hall. £6 per person

Lyminge a history volume 9 – Review – Part 2

As stated in a previous issue of the Newsletter the LHS is extremely grateful to Nigel Thomas for his review which as always is independent and fair to the authors. This is the second half of his review. Readers will be pleased to note that this volume is available in the shops and will form part of our latest bundle offer. Please see the LHS advert in this issue of the Newsletter..

From the pen of Nigel Thomas - Elham

Duncan Harrington's research for his article on *Lyminge Allotments* is extremely detailed and wide ranging. There are wonderful examples of local concern and willingness to offer land for social benefit, but also some fascinating caveats. Witness the Rev. A.F. Ruty: "We say, not from a religious, but from an economical point of view, that Sunday work never pays. You may have your allotments, but if you dig and plant your potatoes on Sunday, we fear you won't grow many potatoes." The accompanying maps and charts are superb.

And then an article, *"Who's been living in my house?"* which is a format that should be repeated. This is the absorbing insight into aristocratic dissipation and sadness, hitherto totally unknown, of the Sugden family, offered by Michael Chisnall. It makes you wonder what else is locked up in the bricks and mortar of other houses in the village. Duncan returns to present the contribution to village life of *J.J. Clayson J.P.* in the Pantheon of Lyminge Worthies. Most villages have in their history, stalwarts to whom much is owed, and Clayson's building firm erected much of 20th Century Lyminge. But perhaps more worthy of notice is the generous service, itemised in the article, he gave to the community, in particular to the Methodist Church.

I have known several people who became very shifty when asked what they did in the war. Suddenly, in the mid-nineteen-seventies, they were released from their code of silence and revealed that they worked in *Bletchley Park*. So well-kept was the secret that colleagues of several years standing found they had worked in adjacent huts but had not known of each others existence. One such was Gladys Harris whose time at Bletchley is brilliantly presented by Rosemary Piddock. Such is the beautiful patchwork of history. It is not made only by the great and important! Perhaps the most moving article is another by Duncan Harrington on *Runaways* from around Lyminge. I challenge anyone not to be appalled by the described treatment of wives and runaway apprentices. On the other hand, there were heart-warming details of charity dispensed to some families.

We learn about the history of *Lyminge Library* and finally there is a brilliant article with superb photographs by John Buss about the *Lyminge and Elham Railway*. It makes a fine conclusion to a fascinating addition to the series of Lyminge Histories.

All this between covers dedicated to the history of *"Lollipops"*. I say no more.

The LHS is very grateful thanks Nigel for this review.

The Coffee Cabin



**FINE COFFEES, SPECIALITY TEAS,
BREAKFASTS, SNACKS, LIGHT LUNCHES,
SANDWICHES, HOME BAKES
OPEN TUESDAY - SATURDAY
NEW OPENING HOURS COMING SOON**

Canterbury Road, Lyminge CT18 8HU
01303 864222

lymingecoffeecabin@hotmail.com



Coach & Horses




Senior Citizens 2 course lunches -

Available Monday - Saturday £7.50

Steak Night - Friday 5th January and 19th January
(booking essential)

Quiz Night - Wednesday 31st January (booking essential)

Live Music - Mad Stones Saturday 27th January from 8.30pm.

Bookings and Contact: 01303 862694  Find us on facebook
For more information please check out our Facebook page and search 'Coach & Horses Lyminge'

BALLROOM & LATIN DANCING

at
Etchinghill Village Hall

Beginner Classes

Thursdays 7.30-8.30pm

Sundays 8.00-9.00pm

Improver Class

Thursdays 8.30-9.30pm

£6 per person per hour

- A great way to keep fit (mind and body), meet new friends, have fun and fill those winter evenings. Oh and of course, learn to dance
- Partners not necessary

Holiday Shutdown - 17th December 2017 to 7th January 2018 inclusive

To join any of my classes, or for further details, or information about private lessons & parties contact

Lynn on 07967979610 / 01303 279504

lynn.chapman0127@btinternet.com

IDTA (AB), (AL), (SalDip)



*Lyminge
Historical Society*



would like to wish you all a very

**happy
New
Year!**

Please note:

There will be the usual Winter break in January & February and the next talk will be on Tuesday 6th March 2018 7.30pm in the Tayne Centre

**Photographing Archaeology in Lyminge
with John Piddock**

New members and visitors are welcome. Members: £11 per annum inclusive of talks. Visitors: £4 per person payable on the door.

Tea and coffee will be served.

Please note: Following the publication of Lyminge a history part 9, this can be purchased through the shops at £7.00. Plus: purchase Parts 1-5 as a bundle for £22 or Parts 1-9 for £44*

To take advantage of the offer please call 01303 862865. This bundle offer is not available from the shops.

*Postage and packaging extra for postal deliveries

**Lyminge Historical Society
Mobile Tel. No. 07759 260816**

Website:

www.lymingehistoricalsociety.co.uk

In aid of the LORD WHISKY SANCTUARY FUND

(Registered Charity 283483)

Park House Animal Sanctuary, Stelling Minnis CT4 6AN.

Tel: 01303 862622

Burns Night Supper

Thursday 25th January – 7pm

The Lord Whisky Tea Room, Rhodes Minnis

Booking essential 01303 862349

Fur, Feather & Exotic Exhibition

Saturday 24th February - 10am to 4pm

Boughton-under-Blean Village Hall,

Nr Faversham

Come and meet some unusual and exotic species and have a chat with the experts. Animal Related Goods & Craft Stalls welcome £10 per table, ring 01303 862622 to book



The Poppy Appeal

is collecting

....used Postage Stamps,Postcards,

.....Coins – any age, any currency

Please leave all donations at either:

Lyminge Post Office, Snippers and Clippers or

Lyminge C E Primary School

**Please address all enquiries to Susan Foster, Poppy
Appeal Organiser, Elham Valley District 01303 862779**

Registered Charity 219279

Who's Who in our Neighbourhood - Lyminge Friends

We are a social group who come together as strangers and soon become friends. Currently there are around 20 members enjoying a varied programme of talks and visits. We often go out for Lunches and there are Cream Teas and a Garden Party to look forward to. In February 2018, we will celebrate our 10th year.

We meet on the first Wednesday morning each month, in the Rigden Room of the Tayne Centre. There are no membership fees and the monthly fee is only £3.00 (2018)

Are you tempted? Come to a meeting and give us a try but if you'd like to talk to one of us first, give Rita a call on 863500



A visit to Sissinghurst

A beautiful summer's day in Deal



Beyond the Valley Travel (formerly Jay Bee Travel)

*Days Out & Holidays
leaving from Lyminge to Canterbury*

Join us along with your family and friends for a relaxing day out or tour further away both in this country or abroad. All trips and tours are in modern coaches with pick up points along the Elham Valley.

All outings & holidays are fully escorted.
For our current brochure please contact:

David & Surian Tamsitt

Tel: 01227 831501 Mob: 07880 333381

Email: beyondthevalleytravel@gmail.com

Member of the Association of Group Travel Organisers

Acknowledgement:

Daphne Andrews would like to thank everyone for their kind messages of sympathy and donations given to the RNLI and Kent Air Ambulance in memory of her dearly loved husband, Ian and for the beautiful flowers she has received which have been of great comfort. Many thanks also to all the friends who packed into Rhodes Minnis Chapel for the service to celebrate Ian's life on 8th December. He will be sorely missed by so many.



**Tayne Centre
MARKET**



Church Road, Lyminge

No Market in January and February
Reopen March

A big thank you to all who supported us in
2017

Look forward to seeing you in 2018



Lyminge Hand Bells

The Lyminge hand bell ringers have been playing in and around Lyminge for well over 25 years. We love to attend fetes and local private celebrations throughout the year so if you think the sound of hand bells would suit a special occasion you are planning, then please contact us. We have an increasingly wide selection of music to choose from or just leave it to us. All we require at the venue is a large table for our bells and music, room for up to 11 players and a minimum donation of £40 for our current charity, the Nepali Children's' Trust. A small contribution to traveling costs is also appreciated if we have to travel more than 5 miles from Lyminge. Please provide plenty of advance notice. Want more info or make a booking?

Please contact:

Ro Edmond 863201 or email welldorm@aol.com

Editor: pb@pbarnes20.plus.com



**ASHTON
TREE CARE**

07929 627622 • 07769 908027

OLLIE@ASHTONTREECARE.CO.UK



**City &
Guilds
NPTC**

**ALL WORK FULLY INSURED
HEDGE CUTTING • STUMP GRINDING • TREE SURGERY**



Mount Pleasant Christmas Lights

A massive thank you to the crowds that came to see the lights 'Switch On' and not forgetting the Lyminge Churches Choirs who sang magnificently. We, as always, are once again overwhelmed by your generous response.

At the time of writing, our lights have so far **raised over £950** which includes a very generous donation of £67 from the Haywardians.

Thank you again for your continued support.

The lights will remain on until the Twelfth Night, so come and see them if you haven't yet!

FAMILY HISTORY Interested in your ancestry?

Lacking the time or expertise to research it yourself? Then give me a call, or email me, to arrange a free, no obligation, initial chat. Research is undertaken at very affordable rates to suit your pocket.

Clive Stanyon: 01303 840820 07771 922192
stanyonc@aol.com



Bookkeeping Services

www.aabookkeepingservices.co.uk

Bookkeeping • Financial Accounting and Accounts
Preparation for Sole Traders and Partnerships

Word, Excel, Outlook, Sage and VT Final Accounting Software
Self-assessments and VAT returns

Anita Adams BSc (Hons) AATQB
07891 135766 01303 864254
anitaadams@live.co.uk

Over 10 years' financial experience
Fixed prices available
or hourly rate £15 per hour

Defibrillators can be found in Lyminge and Etchinghill - do YOU know how to use them to save somebody's life?

Using a defibrillator (AED)

An AED (automated external defibrillator) is a device that gives the heart an electric shock when someone's heart has stopped (cardiac arrest).

You can use an AED on children over one year old and adults.

Using an AED in the minutes before an ambulance arrives can double someone's chances of survival. So, it is up to bystanders to quickly find the nearest defibrillator.

There are two locations in Lyminge; on the outside wall of the toilet block in the Library car park on Station Road, and, on the outside wall of the Village Hall in Woodland Road. In Etchinghill, there is one on the outside wall of the village hall

AEDs are in green cases with a green sign above.

Always call 999 or 112 and do ordinary resuscitation (CPR) until the ambulance arrives.

How do I use a defibrillator/AED?

No training required. The machine will analyse someone's heart rhythm and then use visual or voice prompts to guide you through each step.

- First, make sure that someone has called an ambulance and then give CPR (cardiopulmonary resuscitation) until someone can bring you an AED.
- As soon as you've got an AED, ask for it to be switched on while you continue giving CPR. It will immediately start to give you a series of visual and verbal prompts informing you of what you need to do.
- If someone is with you, they can help follow these prompts until the ambulance arrives while you give CPR.
- Take the pads out of the sealed pack and remove or cut through any clothing and wipe away any sweat from the chest
- Remove the backing paper and attach the pads to their chest
- Place the first pad on their upper right side, just below their collarbone as shown on the pad
- Then place the second pad on their left side, just below the armpit. Make sure you position the pad lengthways, with the long side in line with the length of their body
- Once you've done this, the AED will start checking the heart rhythm. Make sure that no-one is touching the person. Continue to follow the voice and/or visual prompts that the machine gives you until help arrives.

There are many on-line resources available on the St John Ambulance website, including a video showing how to use a defibrillator/AED and their lifesaving app that you can download <http://www.sja.org.uk/sja/first-aid-advice/first-aid-techniques/using-a--defibrillator-ed.aspx>

Let's hope you never need to use it, but if you do, YOU help save somebody's life!!

LYMINGE VILLAGE FOOTIE CUBS

Pre-School Football Coaching Sessions

A positive, safe & fun introduction to football
Relaxed coaching, activities & games
A professional & reliable FA approved Coach
Parent Participation Essential

FOR: Pre-Schoolers (Age 2-until they start school)
WHEN: Saturdays (Term Time) 10:15am-11:00am
WHERE: Football Pitch behind Lyminge Village Hall
COACH: Mark Towse, Level 2 FA Coaching Award
COST: PAY & PLAY £3 per session



GET IN TOUCH for more info & to reserve a space:

f [facebook.com/Lymingefootiecubs](https://www.facebook.com/Lymingefootiecubs)

☎ 07793 026 010

✉ mtowse@hotmail.co.uk

ETCHINGHILL MARKET

The Trustees of Etchinghill Village Hall would like to thank everyone that supported the Etchinghill Market throughout 2017. All the profits go towards maintaining the Hall to the high standards that residents have become to expect. 2017 was our most successful for several years and we look forward to seeing you all in 2018.

The first market of 2018
SATURDAY 3rd FEBRUARY
10am

Tea & coffee, still only 50p a cup
PLENTY OF FREE PARKING

ETCHINGHILL VILLAGE HALL
 Charity No. 302736



Rhodes Minnis Village Hall BEETLE DRIVE

on **Friday 26th January at 7.30pm**

Teas/coffee and juice provided.

There will be a raffle

Adults £2 – Children 50p

Come and join us and start the New Year with a bit of good-old family fun.

New comers very welcome.



Andy & Sarah House The Kings Arms

The Square, Elham, CT4 6TJ
 look forward to enjoying your company in 2018 and beyond.

Look out for our New Year offers!!

Tel: 01303 840242



Helping People Stay Well This Winter GETTING A COUGH OR COLD?

See your pharmacist

Lyminge Pharmacy, 21 Station Road
 Lyminge, Folkestone, CT18 8HQ

Phone: 01303 862425

ABSOLUTELY AMAZING

I would like to thank all the volunteers that made this years Christmas Day Lunch Club such a success. You were truly amazing, with each of you playing your part. You can live in the knowledge that due to your efforts, around 40 people had an enjoyable and social Christmas Day.

**THANK YOU
SO MUCH**

Sam Cunningham



Park House Sanctuary Boarding Kennels & Cattery

Park House, Stelling Minnis CT4 6AN
Brick-Built Heated Kennels ~ Daily Walks
Reasonable Rates ~ Dogs must be fully inoculated
Heated Cat Chalets ~ Quiet Area Inspection Invited.
To book or for further information, call
01303 862622 or email lord.whisky@btinternet.com
www.lordwhisky.co.uk

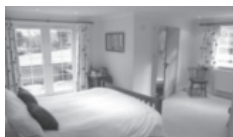
Technical Help When You Need It!

Gadget setup Internet help and training
Purchase advice Security concerns (parental advice)
Help with email TV remotes and tuning PC & Mac
For all those little problems you want to sort.

Call Nigel on 01303 647220 or email
nigel@digitaldoctor.me

Experienced and qualified, 20 years in IT. Excellent rates.

Bridge Cottage Bed & Breakfast 4 Stars Silver Award



Luxury accommodation in a tranquil setting
Chris & Alison, Shuttlesfield Lane, Ottinge
01303 862933 www.bridgecottagesimplybandb.co.uk

Matthew Reynolds Window Cleaning Services

More than 20 years experience in Lyminge
and surrounding villages
For free estimates, please call
07975 510293

HAND MADE CURTAINS, ROMAN BLINDS AND SOFT FURNISHING CURTAIN ALTERATIONS

TEL: VALERY WREN 01303 237755

Andy Mannering Flooring

SPECIALISING IN AMTICO AND KARNDEN
LUXURY VINYL TILES

- Also safety flooring, rubber flooring, etc.
- Commercial and domestic work undertaken
- No job too small
- Free estimates and advice given
- Over 35 years experience
- Fully insured



Telephone: 0797 434 7248 or 01303 863095

Email: info@andymanneringflooring.com

Please visit my website for further information and
feedback **www.andymanneringflooring.com**

Help your child go far with Kip McGrath

Our qualified teachers create individual
tutoring programmes for your child, using
proven Kip McGrath methods.

- ✓ Maths
- ✓ English
- ✓ GCSE Maths specialist
- ✓ 11 Plus

Call today
for a FREE
assessment

kipmcgrath.co.uk

Ofsted
Registered

Folkestone & Hythe Centre
17, Manor Road, Folkestone, CT20 2SA
01303 249 100
folkestonehythe@kip-mcgrath.com

Kip McGrath
EDUCATION CENTRES

RECRUITING NOW



Would you like a flexible, rewarding career in care?
Are you looking for full time hours? Part time work to fit in
around your lifestyle? or to hours top up your weekly income?

Benefits of working in Homecare with Nurse Plus-
Flexible Hours – day, evening and weekend work
Excellent Weekly Pay – up to £10.37 per hour, plus holiday pay
Rewarding career – job satisfaction

No experience needed – Start a new career
Free Training – Qualification opportunities

Staff Benefits – Staff Lottery & Plus Points Scheme

Call Nurse Plus today: 01303 250200

www.nurseplusuk.com homecare@nurseplusuk.com

Cambridge Weight Plan™ Independent Consultant

Anita Adams - Etchinghill

Get back in the picture! With one-to-one support, you can
trust Cambridge Weight Plan.

Call me today for more information about the plan. I can
help you all the way!

Tel: 01303 864254 / 07851614867

Email: anitaadams@live.co.uk

Facebook: [cambridgeweightplanconsultantsoutheastanita](https://www.facebook.com/cambridgeweightplanconsultantsoutheastanita)

Shuttlesfield Barn - 4* Gold - Self Catering



Rural location in Kent's AONB
Families and all pets welcome.
Two bedrooms, ensuite shower
and wet-room. WiFi. TV/DVD.
Holiday, short & relocation stays.
Heated outdoor pool (Summer)
CT18 8LB 01303 862729
Web: www.shuttlesfieldbarn.co.uk
Email: info@shuttlesfieldbarn.co.uk

Maths Tuition

Barham/Elham/Lyminge/Etchinghill

I am a fully qualified maths teacher with 25 years' experience, and excellent results.

I offer tuition for the following;

- Year 5 Maths for the Kent Test
- Key Stage 3 Boosters
- GCSE

For further information please call or text me:

Esther 07456 066690
DBS certificate available.

Etchinghill Baby & Toddler Group

We are a friendly toddler group, which caters for babies and children from 0 to school age. Crafts, messy play, trikes, toys and a singing session are included each week. In dry weather there is also outside access for the children to play.

We meet on Wednesdays between 10am -12noon at Etchinghill Village Hall. We charge £2 per family, 1st session is free. Tea/coffee and healthy snacks are provided.

If you have any queries please contact

Cait Byrne - 07850757571

Lyminge Baby and Toddler Group

We'd love you to bring your little ones along to our informal and friendly group for lots of fun. Come along and join us for craft, singing and lots more. We meet every Tuesday morning at the Tayne Centre 10.00-12.00, term time only. Cost: £2.00 per session, including refreshments for all.

Call: Any enquiries – **Jenny 0756 4130569**
Sarah 0798 4939220.

E-mail: **lymingetoddlergroup@yahoo.co.uk**

Rhodes Minnis Toddler Group

-needs new members



We are a small friendly group who meet on Thursday mornings (term-time) 10am-12 noon in Rhodes Minnis Village Hall. First morning is free.

Back on 11th January 2018

We have a good selection of toys and craft, dough, books and puzzles. Refreshments provided for everyone.

For more information phone **Elaine on 01303 863096**

Lyminge Library Opening Times

Monday	2 - 5pm	
Tuesday	9 - 12noon	Tel: 03000413131
Wednesday	Closed	lymingelibrary@kent.gov.uk
Thursday	9 - 6pm	
Friday	9 - 12noon	
Saturday	10 - 2pm	

Editor: **pb@pbarnes20.plus.com**



Lyminge Pre-School

Ofsted
Outstanding

Lyminge Preschool provides quality Early Years education and day care all year round for children aged 2-5 years. The Pre-School is run by a team of qualified, highly experienced and dedicated practitioners.

Lyminge Pre-school has a safe, stimulating and fun environment that provides support and challenge for all of the children's individual needs. We welcome all children from the age of two from all surrounding areas.

To arrange to meet the team, please call **01303 863149** (day) or email **lymingepreschool@gmail.com** and visit our website **www.lymingepreschool.org.uk**

Looking for homecare services?

Our experienced Care Assistants are on hand to offer support to the elderly, people with a learning or physical disability or other care needs for home services no matter your needs -

- ✓ One call a day to multiple calls
- ✓ Short term or long term packages
- ✓ Home from hospital assistance
- ✓ General assistance or complex care
- ✓ Weekday, weekends, days, night call times

NURSE PLUS

Contact your local branch today
01303 250200
www.nurseplusuk.com

Direct Payments Accepted



PIANO LESSONS FOR ADULTS

Have you always wanted to learn to play the piano but have lacked the opportunity, or faith in your own ability? Did you learn as a child and now regret having given it up?

I specialise in teaching adults and have developed a method which will enable you to progress quickly and with great enjoyment.

Please contact: Lise Cribbin, Bridge 01227 637709

HYTHE AQUA

swim21
Club Accredited

CLUB MARK

Adult Swimming with Hythe Aqua

- Can you swim lengths (25m)?
- Are you between 17yrs and 70yrs+++++
- Do you want to improve your swimming skills?
- Do you want to improve your fitness?

We can help you improve under the direction of our experienced Swimming Coaches. You may want to simply improve your swimming skills and fitness, or even take part in competitions such as Masters Swimming, Triathlons or Open Water – we can help. Two sessions available each week, starting session Fridays at 8.00pm – Hythe Pool.

To book your place phone: **01303 862353** or checkout our website: **www.hytheaqua.org.uk**

Rhodes Minnis Village Hall

Charity No.800345

Rhodes Minnis Village Hall is located 2kms (1¼miles) from Lyminge and just off Longage Hill and Whitehorse Lane in Chapel Lane

The hall, which holds Hallmark accreditation, is ideal for children's parties, band practice, quizzes, meetings and fundraising events and has the capacity to take parties of up to 100. The rates include the use of the kitchen.

Rates

Mon to Fri £15 per session £40 all day
Sat & Sun £20 per session
£30 for evening session and £60 all day

Sessions

AM session 08.30 - 12.30
PM session 13.30 - 17.30
Evening session 18.00 - 23.45

There are special rates for regular users.

For all bookings and enquiries please contact:

Martin Fry 01303 863177 e-mail: book @rmvh.org.uk

Sibton Park Cricket Club

We extend an invitation to our local residents, please join us on match days and selected evenings and take advantage of the Club's outstanding venue, facilities and fully licensed bar.

Having a Celebration? Require a regular venue?

The club house and grounds are available

For further information or to make a booking

please contact: Adrienne and Steven Rowe
07545 280342 - age-rowe@hotmail.co.uk



bus times

for buses from Lyminge Post Office to

Folkestone town centre via Etchinghill & Cheriton High Street

MONDAYS TO SATURDAYS except Bank Holidays

There are route 17 buses at 0705 (not Saturdays), 0749, 0909, 0934 (not Saturdays), 1004, 1034, 1104, 1204, 1304, 1404, 1514, 1614, 1619 (schooldays only), 1654 (schooldays only), 1719, 1749, 1834, 1929, 2113 and 2313.

There are also route 18 buses to Sandling Station & Hythe - for times see our website or call the number below.

SUNDAYS & BANK HOLIDAYS

There are route 17 buses at 0947, 1147, 1347, 1547, 1802 and 2002.

for buses from Lyminge (opposite Aberdeen House) to

Canterbury city centre via Elham, Barham & Bridge

MONDAYS TO SATURDAYS except Bank Holidays

There are route 17 buses at 0727 (schooldays only), 0732, 0752, 0903, 0938, 1028, 1128, 1228, 1328, 1443, 1613, 1703, 1803, 2001 and 2201.

There are also route 18 buses to Canterbury via Stelling Minnis and Bossingham - for times see our website or call the number below.

SUNDAYS & BANK HOLIDAYS

There are route 17 buses at 0827, 1027, 1227, 1427, 1642 and 1842.

These times will operate from 3 April 2017.

timetable information **0871 200 22 33**

Calls cost 12p per minute plus your phone company's access charge

www.stagecoachbus.com



Lyminge Village Hall

Registered charity 28145

Large, refurbished, flexible hall with great facilities

From Theatre productions to Weddings, Craft Fayres to Childrens' parties - we've got it all covered!

Capacity: 200 people dancing / audience seating,
100 for table seating, 50 or less for meetings

Well equipped: stage, kitchen, small rooms, ample parking facilities, disabled access

Access to: playground, skate park, large playing field &

Situation: Rolling hills behind and the Church to the front.

Find out how we can help you with your next event:

BOOKING LINE: 07497625 741

EMAIL: info@lymingevillagehall.org.uk

Guideline prices

MAIN HALL HIRE ~ Fri, Sat PM £65

SMALL ROOM ~ £20

EXCLUSIVE ALL HALL ~ £320



Find us on Facebook
or follow us on Twitter @ Lymingevhall



ETCHINGHILL VILLAGE HALL HIRE FEES

The next time you are thinking of holding a function why not try Etchinghill Village Hall, which holds the highest Hallmark accreditation level (Hallmark 3), with its excellent facilities, including ample parking space. The standard hire charge for the main hall and kitchen are:

Weekdays £11.00 per hour

Saturdays £13.00 per hour

Sundays £13.00 per hour

During the winter months (1 November to 31 March) a Winter Supplement of £1.00 per hour is added to the above rates.

Special rates apply for Weddings and all day events with discounts on the above rates applying to Etchinghill Residents and Regular Hirers.

The use of a separate Committee Room is also available.

For all bookings or enquiries please contact:

The Duty Manager on 07514-758936

TAYNE CENTRE HALL HIRE

Previously known as the Lyminge Methodist Church Hall



Clayson Hall

1 October to 31 May (including heating) £9.50 per hour :

£34.00 per 4 hour session : £66.00 full day

1 June to 30 September

£7 per hour : £25.00 per 4 hour session : £48.00 full day

Rigden Room (Parlour) with heating, if required*

£7 per hour all year (*electric - over heaters).

Burren Room - storage only

Overnight Stays

1 June to 30 September £50; 1 October to 31 May £60

For any enquiries please call **07971 722 401**

C&H: Coach & Horses; **ECC:** Etchinghill Cricket Club; **EVH:** Etchinghill Village Hall; **ERA:** Etchinghill Residents' Association; **ELVH:** Elham Village Hall; **ES:** Elham Square; **JC:** Jubilee Centre; **JF:** Jubilee Field; **KH:** Korf House; **LB:** Laing Bennett; **LBC:** Bowls Club; **LL:** Library; **LMC:** Lyminge Methodist Church; **LPC:** Lyminge Parish Church; **LSH:** Lyminge School Hall; **LVH:** Lyminge Village Hall; **LW:** Lord Whisky; **NP:** Nailbourne Court; **NVH:** Newington Village Hall; **PC:** Postling Church; **PH:** Lord Whisky, Park Hse; **PVH:** Postling Village Hall; **RVH:** Rhodes Minnis Village Hall; **RMC:** Rhodes Minnis Church; **RR:** Rigden Room; **SNL:** See News Letter for info; **SP:** Sibton Park; **TC:** Tayne Centre.

One-Off Events

2018	Time	Event	Where	Tel. No.	Date	Time	Event	Where	Tel. No.
25-Jan	7pm	Burns Night Supper	LW	862622					
03-Feb	7.30pm	90s Music Quiz	LVH	LB					
14-Feb	7.30pm	"Love through word and music"	LVH	LB					
24-Feb	7.30pm	Musical Evening with Hythe Town Concert Band	LVH	863737/LB					
10-Mar	7pm	Quiz	LVH	862928					
21-Apr		Garage Safari		863537					
16-Sep		Garage Safari		863537					

Happy New Year to ALL our Readers

Weekly Events

Day	Time	Event	Where	Tel. No.	Day	Time	Event	Where	Tel. No.
Mon	10am	Open House	EVH	863394	Wed	11am	Singing For Health	JC	862364
Mon	10am	Bridge Club	BC	863177	Wed	11.45am	Pilates	TC	07825109670
Mon	10.30am	Lyminge Larks (Singing)	LMC	07951 572920	Wed	7pm	French Conversation	KH	862972
Mon	11am	Cookery	JC	269602	Wed	7.30pm	Cantores Dominicae Choir	LSH	07813071867
Mon	2pm	Computer Buddy (need to book)	LL	03000413131	Thur	9.30am	Baby Rhyme Time	LL	03000413131
Mon	2.30pm	Knit and Natter	TC	863049	Thur	10am	RM Toddlers Group	RVH	863096
Mon	6.30pm	Ballroom/Latin/Salsa Dancing	TC	07966 751991	Thur	10am	Art Group - Morning	TC	211364
Mon	6.30pm	Judo Club	LVH	862946	Thur	11am	Shopping trips to Supermarket	JC	269602
Mon	7.30pm	Yoga	RMVH	07977503897	Thur	2pm	Art Group - Afternoon	TC	862972
Tues ¹	10am	Baby & Toddler Group	TC	863274	Thur	7.30pm	Ballroom and Salsa Dancing	EVH	07967979610
Tues	10am	Baby Signing	EVH	07800737936	Thur	6.45pm	Short Mat Bowls	LVH	863842
Tues	10.30am	Art Class	JC	269602	Fri	10am	Feel A Fairy Tale Sensory	EVH	07800737936
Tues	11.15am	Chairotics	JC	269602	Fri	10am	Talk Time	LL	03000413131
Tues	11.15am	Feel A Fairy Tale Sensory	EVH	07800737936	Fri	11.15am	Baby Signing	EVH	07800737936
Tues	6.45pm	Short Mat Bowls	LVH	863842	Fri	11am	Seated Exercise	JC	269602
Wed	10.15am	Mature Movers (Exercise)	TC	862873					

Monthly Events

When	Time	Event	Where	Tel. No.	When	Time	Event	Where	Tel. No.
3rd Mon	7.30pm	Etchinghill Cinema	EVH	863333	2nd Wed	10.30am	Mothers Union	NP	862221
Last Mon		Parish Council Meeting	SNL	07715221705	4th Wed	2.30pm	RM Circle	RVH	862913
1st Tues	10.30am	Reading Group	LL	03000413131	Last Wed	7.30pm	Quiz Night	C&H	862694
1st Tues	11am	Reminiscence	JC	269602	1st Thurs	7.30pm	British Legion, Elham Branch	St Mary's Hall, Elham	862508
1st Tues ²	7.30pm	LHS Talk/Event	TC	862972	4th Fri	7.30pm	Beetle Drive	RVH	862616
3rd Tues	9.45am	Family History	LL	03000413131	Last Fri	1.30pm	Team Quiz	JC	269602
3rd Tues ³	7.30pm	Gardening Society	TC	862264	1st Sat	10am	Village Market	EVH	863819
Last Tues	10.30am	Poetry Group	LL	03000413131	2nd Sat	10am	Postling Ch. Coffee Morning	PC	863536
1st Wed	10.30am	Lyminge Friends	LMP	862598	3rd Sat	9am	Saturday Market	TC	862164

¹ In term time only ² Except Jan and Feb ³ Except Jan, Feb, Aug ⁴ Except Aug and Dec

Out and About

Do you have any photos of local events or local groups in action, please call 01303 862699. Give your group a FREE plug!



A while back on 18th November 5 Lyminge Guides and 3 members of the village community rose to the challenge to help plant 1000 or so daffodil bulbs along the roadside from Greenbanks to Broadstreet House. We will appreciate all their efforts when the bank is golden with blooms in spring. The morning started out dry and bright but became cold and wet by the end. Well done to everyone who helped!

So much happens in and around Lyminge! See more photos on the Lyminge Association Noticeboard in the Car Park by the Library

The Christmas Lights at Mount Pleasant Close. The total collected was over £1000 by the time this page was typeset! See also page 9.



Etchinghill Christmas Lights Switch-On with Shepway Brass



Lyminge Friends enjoying their Winter Lunch Party at the Tayne Centre on 6th December.

Mystery Photo



Last month's picture was the No Footway sign in Church Road near the Doctors' Surgery. Where is this sign?

The 7th Annual; Petanque Competition between St. Mary's Drive and St. Mary's Close was held on 28th December. The holders, 'The Close', came with a strong team, but despite this and the free sharing of refreshments between the teams, 'The Drive', pictured below, reclaimed the trophy with a 13 - 9, 13 - 8 victory.



Such concentration! Everyone listening intently to the questions at the **Big Fat Christmas Quiz** held in Etchinghill Village Hall on 2nd December. The quiz being won by The Hopheads.



Father Christmas, with a little help from the Lyminge Association and the Lyminge Guides Elves, delivered 130 presents to 57 homes in the villages. A tradition that has been continued for over 25 years!



Did you see one of the **Methodist Church Christmas Angels**? Lyminge Methodist Church and Methodist Churches throughout the country have been knitting these Angels to 'share God's love and bless the community in public places and community spaces with a Christmas Message'. This one was spotted on the gate to St. Ethelburga's Well.





DILTON MINI SKIP HIRE

Ballast, Hardcore, Sand
and Topsoil Supplied
REGISTERED WASTE CARRIER
01303 812448 or 07799 433754

AIR LINK CARS

(You pack up, we pick up)

Airport, Seaport & Long Distance Travel Specialists.
The Family Run Business where service really counts
Estate cars and People Carriers



Fixed price 24hrs a day. No extras.
Written Confirmation of booking.
For the Easy Airport Link, Think AIR LINK!
01303 670370 - 07766 824 474
airlinkcars@yahoo.com



'Helping you enjoy your garden'

CRT Gardening

Knowledge of general gardening, including lawn care, hedge trimming and cutting, vegetable garden work, fencing installations and repairs, small and medium size tree work and ongoing maintenance of all of them.

Heavy-duty work is also undertaken.

Free estimates; fully insured. Karl Dodd 07967442518

Email: karl.dodd@live.co.uk www.crtgardening.com

KW CONSTRUCTION

Plastering & Rendering Specialist

Maintenance, renovations, extensions,
landscaping, patios, brickwork, roofing

- 30 years experience
- Competitive rates & free estimates
- Fully insured, prompt & reliable

07743488361/01303 862 653/info@kwconstruction.co.uk



Laing Bennett
INDEPENDENT ESTATE & LETTING AGENTS
PHILIP A CHAPMAN

With our excellent local knowledge, service
and two local offices we will get you moving

The Estate Office 8 Station Road Lyminge Kent CT18 8HP
T 01303 863393 E lyminge@laingbennett.co.uk
134 High Street Hythe Kent CT21 5LB
T 01303 264846 E hythe@laingbennett.co.uk

www.laingbennett.co.uk



Hawkinge
Veterinary Surgery

Veterinary Surgery

Opposite Lidl supermarket

A new independently owned veterinary surgery for small animals.

Separate waiting, consultation & recovery rooms for cats/small pets and dogs.

Opening hours: Monday to Friday 08:00-19:00

Saturday 08:30-13:00 24 hour emergency service

Hawkinge Veterinary Surgery 9b Defiant Close Hawkinge

CT18 7SU Tel: 01303 764190

www.hawkingevetsurgery.co.uk

hawkingevetsurgery@gmail.com

SNIPPERS & CLIPPERS UNISEX HAIR SALON

✂ APPOINTMENT NOT ALWAYS NEEDED

✂ WEDDING & SPECIAL OCCASION

✂ GENTS WELCOME

✂ FREE WIFE

✂ SHELLAC NAILS

4 Station Rd, Lyminge,
Folkestone,
Kent, CT18 8HP

01303 647 222
info@snippersandclippers.co.uk



SCRUBBERS - Est. 1988

THE HOME AND COMMERCIAL CLEANERS

One off, regular or moving day 'Blitz'

Oven cleaning - Ironing

Carpet cleaning and more...

For a friendly and reliable service

Free Estimates

Tel: 01303 249288 or 07834 128671

Dennis Huntley

Installer of wood and multi-fuel stoves, heating engineer,

chimney sweep

Lyminge 01303 862 343

Mobile: 07850 784 365



SEATHWAITE BOARDING CATTERY LTD.

Supporting Rhodes Minnis Cat Sanctuary

GREEN LANE, RHODES MINNIS, CT4 6XUTEL: 01303 862243 (Registered charity 262245)

ONLY CATS BOARDED, IN QUIET COUNTRY LOCATION

Individually heated chalets. Single cat £7 per day, a reduction
for 2 or more cats. All cats boarded with us must have current
vaccinations against cat flu & feline enteritis. All profits from the
boarding cattery go to support homeless cats in the Sanctuary.

RHODES MINNIS CAT SANCTUARY

has a wide variety of cats available to caring homes.



CEDAR HOME MAINTENANCE

Building Alterations
Kitchen Installations
Painting & Decorating
Plumbing
Plastering

Damp Proofing
Drainage
Carpentry
Re-pointing
Patios

Windows & Doors
Gutters & Down Pipes
Fascia's & Soffits
Glazing
Electrical

Fencing & Gates

Property Clearance

All Work carried out by Qualified Tradesmen (Fully insured - all areas of Kent covered)

Call Dominic: 07968197613 Office: 01303 230787

cedarhm@hotmail.co.uk and www.cedarhomemaintenance.co.uk

Environment Agency Registered (Reg/472477) Established Since 1986

HOLDEN PLASTERING

All aspects of Plastering

Smooth-over Artex - a speciality.

Coving, Tiling and Plumbing

Phone JAMES for free estimate or advice on:

01303 770449

07773 262970

Tressenden Designs

A seamstress and costume maker with 8 years of experience.

- ♦ Clothing alterations ♦ Repair work undertaken ♦ Made-to-measure; create a bespoke piece for those special occasions
- ♦ Modern and vintage designs ♦ Costumes, ball gowns and wedding dresses

For more information or a quote please contact Amy on: Mobile: 07853 202304 Email: amy.louise.ford@hotmail.co.uk



D.M.B. Plastering

All aspects undertaken
*Interior. Exterior. Plastering. Rendering.
Coving. Ceilings Wall. Floors
Finest quality assured. CSCS Certified.
30 years experience.*

Free estimates. Reliable service. Fully insured.
Call **David** on **07818 607209**

P Davis + Co

General Builders and Roofing Specialist
All work undertaken
Call for free estimate

Tel: 01303 863049 or 0784 6769643

Personal Computing

For straightforward I.T. advice, solutions
and training

Contact: **Steve Ashman**
862869

sra@ashman-consulting.co.uk



CARE FOR YOUR FEET

IAN COX MSSCh MBChA CHIROPODIST
at AGE UK HYTHE AND LYMINGE

Treatments include toenail cutting, corns, hard skin, fungus and more
Prices from £12.00

For further information and to book an appointment
'phone 01303 269602



Wilco Plumbing & Heating

Central Heating Installations & Repairs
Gas & Oil Boiler repairs & replacements
5 Year Guarantee on Worcester Bosch Boilers.
Local Experienced Engineer, Emergency plumbing 24/7 call out
Registered with the Institute of Plumbing
Gas Safe Registered-OFTEC Registered
01303 862173 07860 452640
paul@wilcoplumbing.co.uk www.wilcoplumbing.co.uk

TOBY'S TREE SURGERY

Thinning - Reducing - Maintenance - Felling
ALL TREE WORK, BOTH PRIVATE AND COMMERCIAL,
UNDERTAKEN BY OUR NPTC TRAINED OPERATIVES
Professional Friendly Service

FREE ESTIMATES - FULLY INSURED

Contact Toby Griggs:

07854 098 395 or (01303) 489795

D. SCRIVENS

PLUMBING & HEATING
Oil Fired Boiler Installation,
Commissioning, Service and Maintenance.
Unvented Hot Water Systems - Solar Water Heating
Central Heating - Water Softeners - Bathrooms - Showers - En suites
Approved 'Aqualisa' Installer
WATER INDUSTRY 'APPROVED PLUMBER'
FULLY INSURED
07810 897076 scrivensplumbing@aol.com

East Kent Foot Care

Mobile Foot Health Practitioner
Jo Shapter BSc (Hons), MCFHP, MAFHP

Treating and managing common foot problems,
corns, callus, verrucae, thickened nails,
toe nail management, fungal problems,
diabetic foot assessments etc.

Call: 07745 532075

Member of the British Association of Foot Health Professionals



Total garden care for all your needs

TIM MILLETT

Grass Maintenance, General Gardening, Small & Medium
Size Tree Work, Stump Grinding and Wood chipping
Fencing Repairs & New Installations
Turfing, Hard & Soft Landscaping
Free Estimates - Fully Insured

01303 863676 07752 880583

Email: info@tmhorticulture.co.uk

THE BIG LITTLE BATHROOM COMPANY



COMPLETE BATHROOM SUITES • BESPOKE CAST IRON RADIATORS
TAPS • SHOWERS • TILES • ACCESSORIES • TEA & COFFEE

CANTERBURY ROAD, ETCHINGHILL, KENT CT18 8BS
sales@theblbc.co.uk • 01303 864349 • www.theblbc.co.uk

N.P.C.

Domestic Appliance Services

*Service and repair of washing machines, tumble driers,
dishwashers, cleaners and small electrical work.
For a prompt and friendly service*

Call Neil Collard 01303 892234 or 07798716044
or **www.npcdomesticapplianceservices.co.uk**

Auto Economy Centre
Fully equipped Mechanical Repair & Service Centre
with the latest diagnostic equipment
MOTs £44.95

01303 863656

Orchard Garage, Canterbury Rd, Etchinghill
www.autoeconomycentre.com

Old English Pine

Antique, repro pine, oak and French-style painted furniture with beautiful and reasonable priced accessories to make
your house a home. Bespoke pine units made to order. Huge shop - over 3 floors. Open 7 days a week.

Tel: 01303 248560 www.oldenglishpineinkent.co.uk 100/102 and 90 Sandgate High Street, Sandgate

Financial Planning

David Gridley - Chartered Financial Planner

Range of quality advice from a fully qualified adviser:

- Pre-and Post-Retirement Planning
- Investment Planning
- Inheritance Tax Planning

For further information, please contact our Lyminge office

David Gridley APFS

Tel: 01303 863959 Email: davidgridley@sjpp.co.uk

Local Ironing Lady

Smart,
Friendly Service

smartpress
SERVICES

Free delivery & collection – min order £10

Call or text - 01303 864229 / 07702 321686
tash@smartpressservices.com

OIL BOILER SERVICE

Professional Friendly Service. Prompt Response to Breakdown Calls. Over 40 Years Experience.

For Routine servicing, emergency breakdown calls and commissioning, contact:

P & V QUENBY LTD (Est 1987)

01227 760428

www.oilboilerskent.co.uk

T. Metcalfe Fencing Contractors

Approved Expert Installer for Jacksons Fencing

Established over 30 years

Fully insured - Highly experienced teams



Panel fencing, gates, decking, pergolas, post & rail, stock fencing, security, landscaping & tree surgery.

01303 840201 07790 290 155

metcalfefencing@btinternet.com

Proprietor - Derek Burr,
Ash Ridge House, Elham



Advertising
Branding
Digital Design
Illustration
Marketing
Print Design
Web Design & Development

we're at Newingreen, call for a chat on 01303 812848

www.oakcreative.net

KENT & SUSSEX HOLIDAY COTTAGES

With over 250 properties in this region and an expert local team, call now to book your break or to talk to one of the team about letting your property for holiday rentals

— 01304 619 444 —

www.kentandsussexcottages.co.uk • info@kentandsussexcottages.co.uk

12 King Street, Sandwich, Kent CT13 9BT



SPRING RISE PET CARING SERVICE

DOG WALKING, PET FEEDING, PET VISITS & MUCH MORE!

Whether you need me regularly, short term or occasionally,

I provide a reliable, caring service for you and your pets.

Experience of working with a range of animals from small mammals to large farm animals

Free (no obligation) consultation. CV & references available.

Fully insured and security screened. Contact me (7 days a week)

Mobile: 07582407637 Email: susannahparkin@googlemail.com

Website: www.thespringrise.co.uk

Essential Beauty

*reflexology : aromatherapy : collagen mask facials
non-surgical perceptor : facials :uccio gel varnish
manicures & pedicures : waxing & eyelash/brow tinting*

Therapist with 20 years experience

Call Janene Moat 01303 840052

The Limes, High St, Elham.

Free eyebrow tidy for new clients.



Mini Digger and Operator for Hire

Call Mick for a competitive
quote

Mobile: 07979 881873

Landline: 01303 862079

Email: mickattwell@aol.co.uk

Absolute Financial Management

Daniel Stapley CeMAP

Independent Mortgage Advice

Initial Consultation Free!

Tel: 01303862568 or 07813030611

www.afmanagement.co.uk



SPEARPOINT
TREE SERVICES

All Aspects of Tree
Work Undertaken
NPTC Qualified
Fully Insured
Please call **Shane**
for a Free Quote
07963 203564 or
01303 621992



Sarah de Rougemont

Craftsman/Co-ordinator

UPHOLSTERY

All commissions considered
01227 455841 or 07973 377817



Are you running out of space and need an extension?

Or perhaps you would like to remodel your house?

Friendly local architect available to help you realise your dream home.

For a no-obligation consultation, contact Salma Barwani at ruddbarwaniarchitects@gmail.com or call 07770 196190





Ralph Allard Chimney Sweep



All chimneys, boilers and stoves swept.
Brush and Vacuum. Certificates issued.
HETAS and NACS registered, fully insured.

Member of National Association of Chimney Sweeps

01303 844465 or 07813716654

REGISTERED OSTEOPATHS & MEDICAL ACUPUNCTURIST

Adam Price B.Sc Hons (Ost) Katie Price B.Sc Hons (Ost)

The Clinic 01303 863359 or mob: 07980 897382

- Treatment of lower back pain, both acute and chronic
- Treatment of tension/cervical type headaches both acute & chronic
- Treatment of various stiff & painful arthritic conditions
- Treatment of sports injuries, both soft tissue & skeletal
- Deep tissue back, neck & shoulder massage for symptomatic relief

The cost of your treatment may be recoverable from your insurers. Please check

THE CLINIC
Garden Suite
Pendragon House
4 Station Road
Lyminge
Kent CT18 8HP
01303 863359



info@theclinic-lyminge.co.uk
www.theclinic-lyminge.co.uk



Sunhouse Electrical

Your local reliable Electrician

Part P Registered & Elecsa Approved

On Electrical Safety Register & Fully Insured

For a free quotation call James on

01303 766333

www.sunhouse-electrical.com



GOSBEE CONSTRUCTION

Fencing - Gates - Paving - Resin Surfacing

35 years experience.

Jacksons Expert Installer - Marshalls Paving Contractor

Call Martin Gosbee

07974 835511 01303 863337

gosbeeconstruction@gmail.com

Figures 4 Business LLP

Plan - Monitor - Control



Denise Roberts ACIS, ACMA

- Business plans and budgets
- Bookkeeping and payroll services
- Financial reporting & monitoring
- Qualified Company Secretary
- Qualified Management Accountant
- over 25 years experience

T: 07511 097707

E: droberts@f4b-kent.co.uk

W: www.f4b-kent.co.uk



MANOR VETERINARY CLINIC

We care for them all, great and small

Lyminge Clinic: Methodist Church Hall

Monday, Wednesday & Friday 4-6pm

Please call to book an appointment - 01303 273203

www.manorveterinaryclinic.co.uk

STERRY'S

*Independent
Funeral Director*

01303 272525
93 Cheriton High Street
(opp Co-op)

01303 264400
41 High Street, Hythe
(opp Lloyds Bank)

Always here for you; 24 hour service. Home visits on request.
Choice of pre-paid funeral plans

AMAZING AERIAL VIEWS PHOTOGRAPHY

- Personalised aerial photo of your home from £99
- Wedding aerial photos & videos
- Promotional videos of your business from £349
- Fully insured & qualified CAA UAV pilot

01303 863460/07905 031850 www.amazingaerialviews.com

Red Dragon I.T. Ltd.



- Windows, Mac & Linux Systems
- PC Health Checks
- Wired & Wireless Networks
- Website Design
- Graphic Design

T: 01303 723456 | E: info@rdit.co.uk | www.rdit.co.uk
The Old Granary, Hanover Mill, Church Rd, Mersham, TN25 6NU

LYMINGE FOOD AND WINE 01303 862225



We are here to serve you
Mon. - Sun. 7:00am to 9:00pm
including Bank Holidays
National Lottery Here



South East Aerial & Satellite Solutions

Digital - Freeview - Satellite - Aerials

Supply and fit of quality digital installations, FREEVIEW, SKY,
aerials, poor reception and problem solving, upgrades and
repairs by fully accredited engineers

Free quotations and advice, fixed prices, fully insured

Freeview

NO CALL-OUT CHARGE

freesat

07968 659404 - 07825168010 - 01303862361

THE COUNTRY FENCING COMPANY

Local fencing company supplying and fitting timber fencing, trellis, gates and concrete posts
for homes and businesses. We are friendly and reliable so please contact us for a free quote.

Email :- info@thecountryfencingcompany.co.uk

Website :- www.thecountryfencingcompany.co.uk Tel :- 07519 590941



COUNTRY FARE

CATERING SERVICES

Country Weddings, Christenings and All Family Gatherings, Corporate Lunches, Seasonal Parties & Celebration Cakes

Sally Burr 01303 489795 07814 610995
sallycountryfare@gmail.com

Filehurst Associates

Tel: 01303 239990 E: info@filehurst.co.uk

Domestic & Business Removals - UK & France
Long or Short Term Storage
Business Document Storage
Call now for a no obligation quote

FRESHLOOK GARDENS

Regular lawn mowing service. Garden design. Hard and soft landscaping. General garden work, fencing and decking. Turfing hedge cutting, small and medium tree work. Water features, ponds and patios.

For free quotation ring Geoffrey Hogben

01303 844 680 / 07866 091633

sales@freshlookgardens.info

www.freshlookgardens.info

Established since 1990. Fully insured.

Browns

Elham 01303 840422
Hawkinge 01303 892000

Sales
& Lettings

Over 40 years of Kent
village and country
property

THE local and regional
specialist. Why settle
for less?

www.brownscountryproperty.co.uk

rightmove

onTheMarket.com

RICS

LYMINGE NEWSAGENTS

11-13 STATION ROAD, LYMINGE CT18 8HS
01303862566

POST OFFICE, 'OFF LICENCE'
CONVENIENCE STORE

Dry Cleaning and Laundry, can deliver Papers
OPENING HOURS

7AM TO 10PM EVERY DAY

Local Tradesman

J Tappenden

Established 36 years



Painter/Decorator/Builder

01303 862467

077755 78008



Alan Croucher

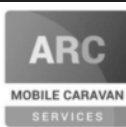
Caravan Engineer

07921 480919 - 01303 863194

Caravans & Motorhomes "WE COME TO YOU"

www.arcmobilecaravanservices.com

"Your manufacturer's warranty is safe in our hands"



Jackson Plumbing Property Maintenance

Complete bathrooms and tiling
No job too small. Special rates for OAP's.

Telephone: home/evening 01303 270691
or daytime 07773 089398 or 07864 929826

M. J. Athrow

BUILDER & DECORATOR, EST. 1965
GENERAL MAINTENANCE

Qualified and Insured. Free estimates

Telephone: 862616 Mobile: 07976 306665

Email: mick@athow.co.uk

SIX MILE GARAGE LTD

Stone Street, Stelling Minnis, Canterbury, Kent CT4 6DN

- Car and light commercial servicing
- Class 4 and 7 mots and repairs
- Car and light commercial accident repair centre (insurance approved)
- Diagnostics bay with latest equipment
- Tyre bay with four wheel alignment and balancing
- Air conditioning servicing

Tel. 01227 709214 or 01227 709491, Fax 01227 709331

E-mail: office@sixmilegarage.co.uk

Trevor Law

Electrical Installations



Serving Elham Valley for 30 years
Part P Registered

01303 862348

07850 970087

J. V. Services

Servicing and Repairs:

- Garden Machinery
- Ride on Mowers
- Trailers & Horseboxes
- Quad Bikes
- Classic Cars

(Free collection and delivery)

Mobile Mechanic

Serve/Repair/Full Restoration:

- Compact Tractors
- Vintage Tractors
- Classic Tractors

Mobile: 078 0300 3047

john@jvserviceskent.com



TMA BUILDERS

Specialising in Driveways, Brickwork, Patios, Fencing, Landscape Gardening. Tree work undertaken (lopping, felling and clearing).

General household repairs, painting, plastering, power jetting & cleaning.

No job too small!! All work guaranteed and insured.

For free advice and quotations please call: 07980114036/ 01303862361 (anytime)

