

# THE LYMINGE NEWSLETTER

For the communities of LYMINGE, ETCHINGHILL, RHODES MINNIS and POSTLING

**May 2018**

Produced by  
THE LYMINGE ASSOCIATION  
[www.lyminge.org.uk](http://www.lyminge.org.uk)

**The Lyminge Association brings you:**



- Are you a local young person or the leader of a local youngsters' group?
- The Lyminge Association has a total of £500 to give to the best five projects presented on the day – 5 x £100 awards.
- Do you have an idea of something that would improve life for a part of our community?
- Or, a scheme that would brighten the area, or, the lives of a particular group?
- Maybe you have always thought: "Why hasn't someone done.....?" Let your imagination run free!
- Now is the time to get your ideas down on paper and work out how best to achieve them.
- At the Junior Dragons' Den on **23rd June**, you will have the opportunity to win £100 to bring your idea to life.
- Ask for the Application Form, ensure your project meets the criteria and return it by 15 June.

**Contact by email or phone: [pb@pbarnes20.plus.com](mailto:pb@pbarnes20.plus.com) or 863737**

## **Lyminge Bowls Club**

(Woodland Road)

**Bowling is for all ages**

**Why don't YOU give it a try?**

**We warmly welcome beginners and experienced bowlers**

**We offer beginners a 6 weeks training course throughout May and into June on Sunday mornings at 10.00. (An alternative day could be arranged if necessary.)**

**All equipment will be provided, just bring along flat soled shoes.**

**Have fun whilst keeping fit! Bowling is also a very sociable activity.**

For more information call:-

**Wendy on 863495, John on 272521 or Bob on 862797**

**[www.lymingebowlsclub.com](http://www.lymingebowlsclub.com)**



## LYMINGE PARISH CHURCH SERVICES

Church Website: [www.lymingechurch.co.uk](http://www.lymingechurch.co.uk)

*If you need to contact the church during the absence of a Rector please ring the Church Warden 01303 862151*

### SERVICES

#### Sun 6<sup>th</sup> May - ROGATION SUNDAY

*This Sunday we travel to services throughout the Benefice and the more 'hardy' people walk from village to village*

Paddlesworth	8.00am	Holy Communion followed by breakfast at 'The Cat & Custard Pot'
Lyminge	11.00am	WOW
Postling	3.00pm	Rogation Service
Stanford	5.00pm	Evensong & High Tea

#### Services During the Rest of the Month

Sun 13 <sup>th</sup> May	11.00am	Sung Eucharist
Sun 20 <sup>th</sup> May	11.00am	Family Communion with children's activity area
	6.00pm	Evensong
Sun 27 <sup>th</sup> May	11.00am	Sung Eucharist
Sun 3 <sup>rd</sup> June	8.00am	Said Holy Communion BCP
	11.00am	Sung Eucharist

### FORTHCOMING ACTIVITIES

#### Mothers Union

Wednesday 9<sup>th</sup> May at 10.30am

Charity Coffee Morning

at 68 Silverlands Road

Cakes – Bring and Buy - Raffle

*Everyone is welcome*

Male & Female, Young & Not So Young

## PADDLESWORTH PARISH CHURCH SERVICES

Sun 6 <sup>th</sup> May	8.00am	Rogation Holy Communion followed by breakfast at the Cat and Custard Pot
Sun 13 <sup>th</sup> May		NO SERVICES
Sun 20 <sup>th</sup> May		NO SERVICES
Sun 27 <sup>th</sup> May		NO SERVICES
Sun 3 <sup>rd</sup> June	6.00pm	Evensong

## LYMINGE METHODIST CHURCH

Visitors are very welcome to join us at our weekly service at **11am** and invited to share fellowship afterwards with a cup of coffee/tea.

**6th May** - Mr Ralph Bradshaw

**13th May** - **10.15am** Valley Service Rev Kevin Taylor  
(incl. Holy Communion)

**20th May** - Mr Ian Couchman

**27th May** - Deacon Carys Woodley



## RHODES MINNIS CHURCH

This small Chapel in beautiful countryside holds a weekly Sunday Service normally at **9.30am** followed by coffee and biscuits. A warm welcome is extended to any visitors.

**6th May** - Mr. Dudley Shipton

**13th May** - **NO** service at Rhodes Minnis but a Valley service at Lyminge at 10.15am

**20th May** - Deacon Carys Woodley

**27th May** - Mr. Tim James



## POSTLING CHURCH SERVICES

**6th May** - **3pm.** Service for Rogation Sunday

**13th May** - No Service

**20th May** - **8.00am** Holy Communion

**27th May** - No Service



## CHRISTIANS IN LYMINGE



**9th May:** MU Coffee Morning 10.30 at 68, Silverlands Road raising funds for MU projects

**19th May:** Saturday Morning Market at the Tayne Centre.

Every Monday **"Knit and Natter"** in the Methodist Church.

We look forward to seeing you at these events.

## Lyminge Newsletter

**Terms & Conditions: Copy deadline for next edition - 18 May 2018**

Please email your copy in to the editor ([pb@pbarnes20.plus.com](mailto:pb@pbarnes20.plus.com)). Your payment must be received before your article or advert can appear in the Newsletter. Please leave your payment along with your name, organisation, telephone number and copy of your ad in a sealed envelope at the Lyminge Library.

**Business adverts** cost £9.50 per month or £95.00 per year. **Personal and charity adverts and articles** from £3 per month, or £30.00 per year. The annual rate offers 12 entries for the price of 10. Please make cheques payable to **'The Lyminge Association'**. If you do not have email, a typed paper-copy may be left with the payment.

Lyminge Association accepts no liability for the accuracy of the advertisements or subsequent actions arising in conjunction with advertisers in the newsletter.

**Further details from Peter Barnes (editor) on 01303 863737**



## Lyminge Litter Pick - 5th May

Jointly sponsored by Lyminge Association and the Lyminge Parish Council,

starts from Lyminge Village Hall at 10am





# BADGERS BRIDGE NURSERY

*"Bridging the indoor and outdoor learning environment  
for children in their Early Years"*

## **The Preschool Setting**

Badgers Bridge nursery offers a smaller, calm setting environment combining Montessori principles alongside the EYFS to deliver the best start for your child. Our skilled and highly qualified practitioners will care and support your child during their time and learning at Badgers Bridge. We support the ethos of outdoor learning and are out and about in the surrounding areas as much as we can.

## **Forest School Wednesdays**

On our own forest school site we provide an outdoor day every week. Fun at Badgers set is learning in its most natural form. Our Forest School is a unique way of building independence, self-esteem and a positive attitude towards learning in children and young people as they explore and experience the natural world for themselves.

**Flexible sessions. Free Early Education places for 2, 3 and 4 year olds. Childcare voucher schemes accepted. Places available.**

Email : badgersbridge@gmail.co.uk

Website : www.badgersbridge.co.uk

Tel : 01303 862951

Ofsted Registered : 395128

Companies House Reg : OC375571

## **Lyminge Friends - May 2018**

In April, we heard from Wendy Fraser with an enjoyable talk on *A Walk around St Margaret's at Cliffe and St Margaret's Bay*. On Easter Monday, we met for lunch in the Coach & Horses – which was a success as usual.

On Wednesday 2nd May, Dr Andrew Richardson, of Canterbury Archaeological Trust, will give his talk entitled 'The making of the Kingdom of Kent' and on Wednesday 16th, we are off for a visit to the Folkestone Garden Centre for a look around and Afternoon Tea. Make sure your place is booked with Marian.

On 6th June, we have the excellent Don Wilks returning, this time with his talk on *Costa Rica - Hummingbirds and Things* and this will be followed by lunch in Royal Oak, Mersham, book your place with Marian. On 20th June there will be a trip over to Dungeness for lunch and a walk around the RSPB site. Book your place with Marian.

**Meetings are 10.30am - 12.30pm in the Rigden Room of the Tayne Centre.** Entry for 2018 is £3.00 which includes light refreshments. We are a friendly social group and welcome new members so just drop into one of our meetings, or, if you'd like to talk to one of us first, please call 863500.



## **LYMINGE PARISH COUNCIL INVITES YOU TO YOUR ANNUAL PARISH MEETING**

**Thursday 10 May 2018 at 7.30pm**

**Lyminge Parish Church of St. Mary & St. Ethelburga**

Annual Parish Meeting of all Parishioners.

Come and meet everyone and hear from your Parish, District and County Councillors.

All local groups and organisations are invited to submit a report to the Annual Parish Meeting. Reports can be given in person on the night and/or sent to the Parish Clerk – contact details below

Refreshments from 7pm.

Lynne Martin, Clerk and Responsible Financial Officer, 11 Everist Court, 63 Station Road, Lyminge, FOLKESTONE, Kent CT18 8HQ

Telephone: 07715 221705 Email: lymingepc@btinternet.com



## **Update . . .**

The following comment came from the PO customer services recently (13 April)

**"Thank you for getting in touch with us.**

**I have checked the Lyminge branch on our system and can confirm that as of yet we don't have a reopening date for the branch. Please be assured that**

**our field team is working hard to resolve the situation".** See also the Parish Council pages

In the meantime:

The full address of the nearest branch is:

- Elham Post Office (2.4m), The Kings Arms, The Square, Elham, CT4 6TJ (open Tuesday, Wednesday and Thursday: 9.30am – 12.30pm).

... and with other POs in Sellindge (4.2m), Stelling Minnis (4.7m), Cheriton (5.3m), and Barham (6.9m).

### From your District Councillors

When changes are proposed at local post offices such as the range of services offered, opening hours or closure, the Post Office usually informs the relevant District and County councillors. We had no communication about the closure of Lyminge Post Office and after consulting with our MP, Damian Collins, Susan wrote to Paula Vennells who is Group Chief Executive of the Post Office. In a letter dated 27 March the Post Office replied,

'I can confirm we have also now received a separate letter raising this query on your behalf by Damian Collins MP. We will respond to both you and Mr Collins once our enquiries are fully completed.'

There has been no further reply and Susan has responded that whatever the outcome of the enquiries what is urgently needed is the restoration of Post Office services either by a willing local business or in one of the community buildings in the village. Damian Collins has added his voice to this response and we will continue to bring what pressure we can for a speedy resolution.

You have until Friday 18 May to submit comments on the Core Strategy Local Plan Review which looks at where the homes and jobs in our district should be over the next 19 years. It updates the 2013 plan and includes Otterpool Park Garden Town and additional housing sites in Sellindge. There's also a fresh 'call for sites' provided they are alternative sites and not ones already evaluated and rejected for the reviewed plan. There's more information and a link to the consultation on the district council website. There's a search option so that you can find all references to Lyminge.

10 families and individuals on the council's housing waiting list were handed the keys to the new homes built for the district council at Gurkha Way, Military Road in Folkestone. They included two ground floor flats specially adapted for disabled tenants. There are also 'shared ownership' properties for sale at this development from £63,750 for a 2 bedroom home, demonstrating our continuing commitment to provide affordable homes for local people to rent or buy.

As this year is the 100th anniversary of the end of the First World War, the District Council has set up a WW1 Centenary Memorial Fund to support commemorative events across the district. Applications can be for grants of between £500 to £10,000 (there's £50,000 of funding available in all) and applications must be received by 12 noon on 7 May. Further details from Alexandra.Samson@folkestonehythe.gov.uk

Susan took part in the Stream Clean on 07 April in Tayne Field which was blessed with sunshine. We had participants of all ages and cleared litter, fallen branches and cleared a channel to make sure the Nailbourne could flow and not flood the play area. She joined residents in Etchinghill for their bi-annual litterpick on 14 April which left the village looking its best. Susan also attended Postling Parish Council on 04 April. Jo Maher, Postling's excellent parish clerk is giving up her role as clerk. She estimates this job takes around 3 hours a week and if anyone is interested they should contact the parish council via their very good new website – [www.postlingparishcouncil.co.uk](http://www.postlingparishcouncil.co.uk)

Jenny attended the funeral of Rev Patrick Goodsell at Hastingleigh. Patrick was Priest-in-charge of Sellindge with Monks Horton and Stowting (1978-84), Vicar of Sellindge with Monks Horton, Stowting and Lymington with West Hythe (1984-92) and then moved to Nonington. On his retirement he moved to Lyminge and assisted in many services in Lyminge, Hastingleigh and other churches in the area right up to his death on 1 March 2018. He was a Trustee of the Sellindge & District Playing Fields Benevolent Society. Our thoughts are with his wife, Dorothy, and the family at this time.

Susan Carey ([susan.carey@shepway.gov.uk](mailto:susan.carey@shepway.gov.uk) 01303 670561) and Jenny Hollingsbee ([Jenny.hollingsbee@shepway.gov.uk](mailto:Jenny.hollingsbee@shepway.gov.uk) 07887918458) - ward councillors for North Downs West, Shepway District Council



### Railway Museum THE ELHAM VALLEY LINE TRUST Countryside & Craft Centre

The Museum, Countryside & Craft Centre is open every weekend and Bank Holiday until the end of November.

The next event is the **MILITARY EVENT**  
**12th & 13th May**

[www.elhamvalleylinetrust.org](http://www.elhamvalleylinetrust.org)  
[www.facebook.com/ElhamValleyLineTrust](https://www.facebook.com/ElhamValleyLineTrust).

Official  
regular Activities - Art & Nature Club  
on 1st Saturday of each month

### Rhodes Minnis Circle

In March our speaker was Barbara Athow who gave us a delightful illustrated talk on "**Acrise Place Remembered**".

When Barbara was eleven she became a weekend guide showing visitors around Acrise Place. This was originally owned by the Papillon family in 1666 and after several owners and being requisitioned by the army during the war was bought again by the Papillon family in 1950. The house was designed by Robert Adams and beautifully furnished. Barbara loved her time at Acrise Place and was eventually invited to hold her wedding reception there.

The competition was won by Daphne Andrews with Molly Walker 2nd, Jacqui Storey and Marilyn Norton 4th. On the **23rd May** we will be holding our **AGM** followed by afternoon tea provided by the Committee.

We meet at Rhodes Minnis Village Hall at 2.30pm and visitors are more than welcome.

For further details please contact 01303 862913



### ETCHINGHILL VILLAGE HALL – John White 863819

**OPEN HOUSE** every Monday 10.00 – 12.00 am, all welcome. Games, quizzes, crosswords, company, refreshments all available. The Rural Kent Coffee Caravan will be visiting on 21st May. Do come along for a cup of coffee and a chance to see what it is all about.

**PICKLEBALL** on Tuesdays 2 - 4pm. Come along and have a go. Equipment will be supplied. Good for gentle exercise.

**BINGO** on Wednesdays from 2pm. Join in, the more the merrier, prizes for the winners. Refreshments are available.

**SATURDAY MARKET** Saturday 5th May, doors open 10am. A variety of stalls are available as well as refreshments.

**ETCHINGHILL VILLAGE HALL AGM** Sunday 20th May 6pm. Open to all Etchinghill residents, refreshments available. The meeting will last approximately 1 hour.

### ETCHINGHILL RESIDENTS' ASSOCIATION – Dave McCombe 07939 076617

**ETCHINGHILL CINEMA CLUB** - is showing the film 'Victoria & Abdul' (12), on Monday 21st May, starring Judy Dench, Ali Fazal and Tim Pigott-Smith. Doors open at 7pm for a 7.30pm start. Abdul Karim arrives from India to participate in Queen Victoria's golden jubilee. The young clerk is surprised to find favour with the queen herself and their friendship deepens. New and existing members are welcome. The entrance fee of £5.00 includes admission, refreshments and a lucky draw ticket. For further information, please visit [www.etchinghill.info](http://www.etchinghill.info)

**ETCHINGHILL FUN SPRING QUIZ** will be held on Saturday 19th May. Doors open at 7pm for a 7.30pm start. To reserve a table please email Geraldine, [gpmccombe49@gmail.com](mailto:gpmccombe49@gmail.com) or call 07544 670363. Cost is £3 pp for tables up to 6 persons, payable on the night. Please bring your own refreshments.

### NEIGHBOURHOOD WATCH – Jim Parris 862353

On the 4th – 5th April between the hours of 20.00 and 07.00, a garage was broken into in Westfield Lane, Etchinghill. It is possible that the suspect(s) were disturbed by a dog around 4am. If you have any information which may be useful to the investigation of this incident please call 101 and quote crime report number – ZY/18051/18.

**PARISH COUNCILLORS:** have been busy reporting any pot holes they see to the Kent Highways and they hope that local residents are doing the same. Hopefully, by the time you read this work will have commenced by Kent Highways on filling them in.

**ARK BAKERY** – We are delighted to report that our very own artisan bakery has won a Highly Commended special award from the Countryside Alliance Rural Oscars.

**RESIDENTS' COMMENT:** Please spare a thought for non-drivers who use the pavements for what they are intended for i.e. walking with children, dogs, pushchairs, or driving an electric disability buggy. If you or your visitors have to park partly on the pavement to enable other road users to pass, please make sure there is enough space for pedestrians to pass comfortably. Do be aware of the overhanging foliage which also impedes their journey.

**If you have an item you would like included please contact Barbara on 862873 or [Barbara.newing@hotmail.co.uk](mailto:Barbara.newing@hotmail.co.uk)**



## World War I Commemoration - Remembrance Sunday 'There, But Not There'

Following the article in last month's newsletter, a number of people have welcomed the opportunity to contribute to the installation in the Parish Church to commemorate the end of World War I. The opportunity remains open to anybody else should they wish to remember a fallen relative or friend.

To that end, any financial donations may be passed to Adrian Willcox (01303 862699) and more about the project can be found at [www.therebutnotthere.org.uk](http://www.therebutnotthere.org.uk).

*"I felt as if the souls and spirits of those who died all those years ago had been bought back to life in the church. List of names on a memorial are all very well, but it is the visual impact which is so important."*

*"A truly beautiful, moving and evocative memorial. It really brings it home. Wow!"*

## Lyminge Bowls Club

Woodland Road, Lyminge

**Would you like to learn to bowl?** On Sunday mornings throughout May and into June we will be coaching new bowlers in the delights of the game. Come along and give it a try. (Another day could be arranged if necessary.) All you need to bring along are flat-soled shoes. Call 863495 for further information.

All welcome to come along and watch home matches, which for May are as follows:-

Saturday, 5 May – 2.30pm

A Club competition – the Webb Trophy

Sunday, 6 May – 2.30pm

A mixed game with members from River

Saturday, 12 May – 2.30pm

A Club competition – the Glasgow Shield

Tuesday, 15 May – 2.30pm

Ladies from River play against our ladies

Thursday, 17 May – 2.30pm

We have a game with a touring team from St Chads

Tuesday, 22 May – 2.30pm

The ladies have a game against Wear Bay ladies

Thursday, 24 May – 2.30pm

Ladies and Gents from Sellindge come to play



# Lyminge 5k Fun Run

13th May 2018  
10.30am Lyminge Village Hall

In Aid of  
  
Pre-School

£10 per Runner (Registration from 10am on the day)  
\* Snacks \* Drinks \*  
\* Fun Run Obstacle Course for Children (from £2pp) \*



Registered Charity No. 1029226

## MUSIC ON A FRIDAY

is pleased to present

### MEMORY LANE

*sounds from the 60's and 70's*

**7.30pm - 15th June at Lyminge Parish Church**

**FREE ENTRANCE, FREE CHEESE AND WINE**



### Lyminge Dramatic Society

The popular plays in the pub returns this month on May 16th at 7.30 in the Coach and Horses Lyminge. Join us for a relaxing play reading and grab a drink or two in the bar.

Our next big production will be the much loved 'Glorious' from the 14th to the 17th November. This hugely funny play is based on the life of Florence Foster Jenkins, the legendary New York heiress and socialite who wanted to be a great operatic diva despite having one of the worst voices in history and who used all her money, charm and unstoppable willpower to make it happen. The soprano voice that she hears in her head is beautiful but it never occurs to her that this is not the sound that issues from her mouth! The play opens in New York in her apartment, which she shares with her English actor gentleman friend, with her auditioning a new pianist, Cosme McMoon. Add in a Mexican maid who has attitude but not a word of English, her scatterbrained friend Dorothy, and follow their exploits to the crowning moment of a sell-out performance at Carnegie Hall.

It is a long way off but we are sure you will want to note the performance dates to see this wonderful play. Some of you may have seen the 2016 film version with Meryl Streep and Hugh Grant but the play is even funnier!

## Outdoor Theatre in Lyminge

The very popular Rude Mechanical Theatre Company will be coming back to Tayne Field, Lyminge, this summer on Sunday 29th July.

It will be their 20th year of touring and the play is 'Oberon's Cure'. In this prequel to 'A Midsummer Night's Dream' an old goat of a fairy is not capable of resisting a beautiful young 'ooman woman. Now when has that not been in the news recently! But the waspish Hippolyta, running amok in the forest, is more than a match for him. Love is thwarted as the human and fairy worlds collide. But will it triumph in the end? A funny and at times deeply romantic play about how we deal with desire.

It starts at 7.30pm as usual, but you can get there from 6.00pm with your picnics. Bring your own low backed chairs and warm clothes.

Tickets are available on-line from the Rudes' website - [www.therudemechanicaltheatre.co.uk](http://www.therudemechanicaltheatre.co.uk) - and locally from Laing Bennett and Mike Chisnall (01303 862743).

You won't want to miss this funny, romantic and rather poetic offering from the Rudes.

## THE RUDE MECHANICAL THEATRE CO.

# OVERON'S CURE

"Hilarious & romantic  
prequel to  
A Midsummer  
Night's Dream"

20<sup>th</sup>  
YEAR  
TOURING

International touring company endorsed by  
ARTS COUNCIL  
ENGLAND

### OUTDOOR THEATRE

## The Tayne Field, Lyminge

**Sunday 29th July at 7.30pm**

**TICKETS** - £16 + conc from Laing Bennett, Mike Chisnall  
(01303-862743) & online at [www.therudemechanicaltheatre.co.uk](http://www.therudemechanicaltheatre.co.uk)

*Bring low backed chairs, warm clothing & picnics from 6.00pm*



## Snippers and Clippers Barbers

Monday	9am - 5.30pm
Tuesday	9am - 5pm
Wednesday	CLOSED
Thursday	9am - 5.30pm
Friday	9am - 6pm
Saturday	9am - 4pm

Appointments available but not necessary  
Free parking opposite. Loyalty scheme



# Rhodes Minnis Cat Sanctuary

Registered Charity 262245

Seathwaite, Green Lane, Rhodes Minnis,  
Canterbury CT4 6XU  
www.rhodesminnis.co.uk  
Email: rminniscats@gmail.com

## Spring Fair Sunday 27th May 11am - 4pm

Homemade cakes and jams,  
plants, books, CDs, DVDs, Bric-a-brac.

Bring and Buy welcome.

Refreshments available all day.

Come and make friends with our Cats

....and maybe take one or two  
home with you!!

## Sir Charles Igglesden (1861-1949) 'Sauntering through Kent'



On the 22nd April 1899 there appeared in the Kentish Express under the heading "A Saunter Through Kent with Pen and Pencil" an article about Kennington, "a picturesque parish not two miles distant from Ashford". The paper announced that this was to be the first in a series of articles describing the village of Kent.

The author of this first article although unnamed was Charles Igglesden (1861-1949) who was Editor of the Kentish Express and the Illustrator was Xavier Willis the Kentish Express's resident artist. Little could they have expected that the series would run for over 45 years with the same men wielding pen and pencil.

Malcolm Horton has written a biography celebrating the life of Sir Charles Igglesden. **This is to be published on 2nd May 2018 and launched on that day at 6.30pm through Waterstones, Canterbury, entrance free.** The publishers of the book are Oakweald, a joint venture between Bygone Kent and Malcolm Horton. **It will also contain Volume 35 of his Saunter series villages that appeared in the Kentish Express between 1942-1944 but never found its way into hardback form.** The villages featured are Selling, Stalisfield, Stowting, **Postling**, Bonington, Otterden, Oare, Norton and Luddenham.

## TAYNE FIELD PLAY PARK PROJECT UPDATE

VIEW THE DESIGN FOR YOUR PARK & HEAR  
LATEST NEWS FROM THE PROJECT TEAM



WEDNESDAY 16 MAY  
8.30 PM  
THE TAYNE CENTRE

If you have any questions in the meantime or ideas for fundraising,  
please contact us: [lymingeyouthaction@hotmail.com](mailto:lymingeyouthaction@hotmail.com)

FOLLOW LYMINGEYOUTHACTION ON FACEBOOK

## LYMINGE VILLAGE FOOTIE CUBS

### Pre-School Football Coaching Sessions

A positive, safe & fun introduction to football  
Relaxed coaching, activities & games  
A professional & reliable FA approved Coach  
Parent Participation Essential

FOR: Pre-Schoolers (Age 2-until they start school)  
WHEN: Saturdays (Term Time) 10:15am-11:00am  
WHERE: Football Pitch behind Lyminge Village Hall  
COACH: Mark Towse, Level 2 FA Coaching Award  
COST: PAY & PLAY £3 per session



GET IN TOUCH for more info & to reserve a space:

[facebook.com/Lymingefootiecubs](https://www.facebook.com/Lymingefootiecubs)

07793 026 010

[mtowse@hotmail.co.uk](mailto:mtowse@hotmail.co.uk)

## Junior Dragon's Den 23rd June - Tayne Centre

Application forms for bids available now

Contact by email or phone: [pb@pbarnes20.plus.com](mailto:pb@pbarnes20.plus.com) or 863737





Some of the entries at the **The Rhodes Minnis Spring Show** held on 24th March

**More photos of local events in the back of the Lyminge Association notice board in the Lyminge car park**



The trophy winners of the Rhodes Minnis Show -  
left to right; Gerry Newman, Carol Lambert, Dorothy Athow, Daphne Andrews and Dick Athow

## SITUATION VACANT - Housekeeper required

Housekeeper required for Sibton Park, Mondays 9-3 and Fridays 9-5. Hourly rate is £8.75. Possible holiday cover in addition.

Please contact Ann Redgwell Site Manager if interested on 01303 863022.



**The Jubilee Centre, Everist Court  
Station Road, Lyminge, CT18 8HQ  
Tel: 01303 269602**

This month we have welcomed **Ben Gosden** to our team as our new service manager. Ben is keen to get to know the centres and the people and communities that we serve. So if you see him, please say hello, and perhaps share your thoughts on the services that we offer.

Our clients have also recently returned from their holiday to Great Yarmouth which was enjoyed by all, and we would like to extend our thanks to Mathew Martin and family who joined us again for the trip. We are pleased to hear that your relocation is going well!

As always if you or someone you know might benefit from the services that we offer, please do get in touch on **01303 269602** to see if we can help or come in and see us at **The Jubilee Centre, Everist Court, Station Road, Lyminge, CT18 8HQ**



## Lyminge Hand Bells

The Lyminge hand bell ringers have been playing in and around Lyminge for well over 25 years. We love to attend fetes and local private celebrations throughout the year so if you think the sound of hand bells would suit a special occasion you are planning, then please contact us. We have an increasingly wide selection of music to choose from or just leave it to us. All we require at the venue is a large table for our bells and music, room for up to 11 players and a minimum donation of £40 for our current charity, the Nepali Children's' Trust. A small contribution to traveling costs is also appreciated if we have to travel more than 5 miles from Lyminge. Please provide plenty of advance notice. Want more info or make a booking?

Please contact:

Ro Edmond 863201 or email [welldorm@aol.com](mailto:welldorm@aol.com)

## Food - Quiz Night - Help!!??

Following on from the recent success of The Lyminge Association's **Quiz Night** held in The Lyminge Village Hall (10 March), we have been asked to run another in the Autumn on **20 October.... BUT with a hot supper.**

Is there anybody in the area willing to volunteer to cook a basic meal (2 courses) for about 80 people with all costs met? We need to find this kind soul who will step up to the plate (excuse the pun!!) and offer to do this for us. We'll support this person with what labour is needed to produce the meal - e.g. peel the potatoes, wash up, etc!!

Please contact **Dave Hunt-Cooke** for further details or preferably with an offer - **01303 862928** or [davehc@uwclub.net](mailto:davehc@uwclub.net)



# The Coffee Cabin



**FINE COFFEES, SPECIALITY TEAS,  
BREAKFASTS, SNACKS, LIGHT LUNCHES,  
SANDWICHES, HOME BAKES**

**OPEN WEDNESDAY - SUNDAY**

Canterbury Road, Lyminge CT18 8HU

01303 864222

lymingecoffeecabin@hotmail.com



## ETCHINGHILL MARKET

...in full swing

**Saturday 2nd June**

Everything from treats for your dog to home made cakes. Plus

all the local news, so pop in for a cup of coffee and a bacon roll for just £2

All your favourite stalls to enjoy in 2018.

**From 10am**

Plenty of free parking

**ETCHINGHILL VILLAGE HALL**

Charity No. 302736

The family of **Jean Howard** would like to extend our thanks and appreciation for every one of you who have supported us in our loss and we were overwhelmed by the number of you who attended the service. We're sure she would have been very humbled that so many people had turned out to say goodbye to her. As a family we were honoured to have had her as our mum and grandma.

## Coach & Horses



**Senior Citizens 2 course lunches -**

Available Monday - Saturday £7.50

**Sunday Carvery** - Every Sunday between 12-4pm (booking essential)

**Steak Night** - Friday 11th & 25th May (booking essential)

**Quiz Night** - Wednesday 30th May from 7pm (booking essential)

**Live Music** - 'Hatched Up' Saturday 26th May from 8.30pm

**Bookings and Contact: 01303 862694**

For more information please check out our Facebook page and search 'Coach & Horses'



Editor: pb@pbarnes20.plus.com



*Lyminge  
Historical Society*



Come and join us for our season of talks

**Please note early start on 1st May**

**Tuesday 1st May at 7.00pm in the Tayne Centre**

Rob Baldwin will give a talk on the Heritage Lottery Fund application to re-excavate the remains of the Anglo-Saxon Church uncovered by Canon Jenkins

This will be followed at 7.30pm by the scheduled talk on  
**A History of Pirate Radio Speaker: Bob Preedy**

On **5th June** at the normal start time of 7.30pm in the Tayne Centre. A talk on '**They Dared to be Doctors**'

**Speaker: Toni Mount**

New members and visitors are welcome.

Members: £11 per annum inclusive of talks.

Visitors: £4 per person payable on the door.

Tea and coffee will be served.

Please note: Following the publication of Lyminge a history part 9, this can be purchased through the Premier Food Store at £7.00.

Plus: purchase Parts 1-5 as a bundle for £22 or Parts 1-9 for £44\*

To take advantage of the offer please call Daphne Andrews on 01303 862865. This bundle offer is not available from the shop.

\*Postage and packaging extra for postal deliveries

**Lyminge Historical Society contacts:**

07759 260816 or [www.lymingehistoricalsociety.co.uk](http://www.lymingehistoricalsociety.co.uk)

Please call 07709 420736 or email [enquiries@ukhighflyers.com](mailto:enquiries@ukhighflyers.com) to register your interest. We take Childcare Vouchers and are OFSTED registered.

**The Sky is the Limit with...**

# UK HIGHFLYERS

Starting Kent Test and 11+ preparation

at Hawkinge Community Centre

from Monday 16<sup>th</sup> April 2018

**Academic Tuition**

**Ages 4-11+**

We hold extra tuition sessions every Monday and Wednesday

Drop in between 3.30pm-5.30pm

We will be holding mock exam practice during the summer holidays in July and August

OFSTED Number EY556482 Company Number OC413117

## In Aid of Lord Whisky Sanctuary Fund

Registered Charity: 283483

Park House, Stelling Minnis, Kent CT4 6AN

Tel: 01303 862622 Fax: 01303 863007

Website: [www.lordwhisky.co.uk](http://www.lordwhisky.co.uk) ~ Email: [lord.whisky@btinternet.com](mailto:lord.whisky@btinternet.com)

## Boot & Spring Fayre

**Saturday 5<sup>th</sup> May at Park House**

Boots from 8am (cars £7 / vans £10) - Entertainment from 12noon

East Kent Piping Society ~ The Hawkinge Flyers ~ Sheep Shearing

'Froojamaflop and Fred', in association with Applause Outdoors

Bouncy Castle, Hot & Cold Refreshments, Tombola & much more!

Classic Cars & Motorbikes welcome

## 9<sup>th</sup> Annual Cyclo-Sportive

**Bank Holiday Monday 28<sup>th</sup> May, from 9am at Park House**

Entry £20 in advance or £25 on the day. Choose from testing 50 or 72 mile routes on the quiet roads of the Kent Downs and Romney Marsh.

For further details and an entry form, visit our website or email

[nickracingsnake@btinternet.com](mailto:nickracingsnake@btinternet.com)

# Who's Who in our Neighbourhood - 1st Lyminge Scout Group



- **For girls and boys** from 6 to 18 years of age
- **Scout Headquarters**, Woodland Road, Lyminge, next to Lyminge Village Hall
- **Group Scout Leader**, Alan Croucher 01303 863194
- **Beaver Scouts (6-8 years)** BE PREPARED . . . FOR FUN AND FRIENDS. We believe that fun, friendship and adventure are what matter most. If you enjoy being creative, playing games, going on visits and discovering the world around you then you'll love what we do. Tuesday's 5.30 to 6.30pm Beaver Scout Leader - Martin Jones
- **Cub Scouts (8-10½ years)** MORE FUN; MORE ADVENTURE. There's never a dull moment. From local visits and weekend camps to creative and outdoor activities, our programme is packed with adventure. You'll learn new skills, make new friends and most importantly, have fun! Tuesday's 6.45 to 8.15pm Cub Scout Leader - Keith Whiting
- **Scouts (10-14 ½ years)** MEET THE PEOPLE WHO INVENTED ADVENTURE. Look up adventure in the dictionary and you'll find Scouts abseiling off the page. We're the original mud splattered, outdoor adventurers and we're still going strong. If you're aged 10 to 14½ and enjoy trying new activities, learning skills and making friends, you'll like what we do. Friday's 7.30 to 9pm. Scout Leader - Peter Vale
- **Explorer Scouts (14-18 years)** JOIN IN, YOU WON'T REGRET IT. New skills and activities, friends who are on your wavelength, plus volunteering opportunities and useful experience for your CV... Explorer Scouts offers all these things and more. If you want more out of life and are not happy to settle for second best, then you'll love what we do. Wednesday's 7 to 9pm Explorer Scout Leader - Laura Bernard
- **Volunteer today** and make a positive impact in your community. Scouting offers fun, challenge and everyday adventure to 400,000 girls and boys across the UK, but it's about fun and friendship for adults too. You can give as much or as little time as you like and you can fit volunteering around your work and family commitments. With full support and training, you can experience the fun, friendship and adventure of Scouting for yourself, all on a flexible basis.
- **For more information** on any of the above contact, **Group Scout Leader, Alan Croucher 01303 863194 or 1stlyminge@gmail.com**

## Wanted

### Parish Clerk and Responsible Finance Officer for Postling Parish Council.

Approximately 3 hours per week. Pay to be negotiated.

#### Job Description:

1. Attend meetings, normally 6 meetings per annum, plus 1 AGM meeting. Prepare agenda and write up the minutes.
2. Looking after daily email communication.
3. Updating Parish Website as required with help of our webmaster.
4. Prepare and submit Annual Accounts and manage parish council finances.
5. Laptop and scanner is provided.

For more information, please go to:

[www.postlingparishcouncil.co.uk/](http://www.postlingparishcouncil.co.uk/).

To apply please write to the **Chairman, Cllr Frank Hobbs** on [fhobbs.postlingpc@outlook.com](mailto:fhobbs.postlingpc@outlook.com) or call on 01303 862 188



It's that time of year again. **Christian Aid Week** is fast approaching and will be from 13th-19th May this year. It is the only televised/advertised nationwide door-to-door collection in

the year, so we hope that people will once again be generous, thinking of those less fortunate than ourselves in the world in which we live. Whatever our views of charities, we still need them, as some governments of the world do not care for their poorest people the way we would presume they should. There is no Welfare State in the developing countries.

If anyone has any questions about Christian Aid, they have produced an information leaflet, which I can let people have a copy of if they have any hesitations about giving. This village is generous and usually the total amounts to a four-figure sum (including Postling and Paddlesworth).

I will announce now that I intend giving up the role of co-ordinator for this organisation after this year so, if anyone would like to take over from me for next year and thereafter, please contact me on 01303 863911. **Norah Chinneck**

## pushing up daisies

**Lyminge Conservation & Environmental Group**  
'the aim and purpose of supporting conservation and environmental projects within the parish of Lyminge.'

## Did you read that we have funds?

**Do you have a project that we may help?**

**Deadline for these applications: 30 June 2018**

Contact: Mike Foxon: 01303 862073 or [jam.moonraker@btinternet.com](mailto:jam.moonraker@btinternet.com)  
Moonraker, High Street, Lyminge, CT18 8EN

## Lyminge Judo Club

(British Judo Club Registered)



We are a small friendly village club.

We welcome and encourage both novices and skilled players and train every Monday evening at Lyminge Village Hall from 6.30pm

Open to all ages from 6 upwards - no upper age limit.

Juniors £2.50 per week Seniors £3.50 per week. First session free, with no obligation.

#### Contact:

Selwyn Nichols 01303 862946 [selwyn\\_nichols@hotmail.com](mailto:selwyn_nichols@hotmail.com)

**ETCHINGHILL RESIDENTS' ASSOCIATION**

**Etchinghill Cinema Club**

**FILM SHOW**

**"Victoria & Abdul" <sup>12</sup>**

**Monday, 21<sup>st</sup> May 2018**

**Etchinghill Village Hall, 7pm for 7.30pm**

Entrance Fee £5 per head

Open to new and existing members

**FREE Refreshments and Raffle**



[www.etchinghill.info](http://www.etchinghill.info)

**ETCHINGHILL VILLAGE HALL**



will be held in the village hall on  
**Sunday 20th May 2018 at 6pm**

To all Etchinghill residents,  
 Please come along to the AGM and show your support for this marvellous local facility.  
 This is your opportunity to find out about the Hall, activities that are available, as well as an update on the finances and plans for the year ahead.  
 If you would like to be involved with the future management of the Hall you will have the opportunity to put your name forward as a future Committee Member.  
 The meeting will last approximately one hour and refreshments will be available.

**JOHN WHITE**  
*Chairman, Etchinghill Management Committee*

**Obituary Mrs Annie Trayner**  
**12 January 1921 - 06 March 2018**

Annie retired to Etchinghill with her husband Alex in 1984 and enjoyed the peace and quiet of this lovely village. They joined in with the community – Annie playing bridge and being treasurer for the WI. The WI outings and events gave Annie immense enjoyment with many friendships. However, as Annie became ill she withdrew from social life.  
 Her funeral will be a small private family gathering.

**LYMINGE GARDENERS' SOCIETY**

**When? Tuesday 15 May 7.30pm**

**Where? Tayne Centre**

**'We Made A Garden'**

Roland Stevens  
 (Members £2 Non members £4)  
 (Contact: Veronica 01303 862264)



**There's more this month...**

**Free Visit to A New Member's Garden**  
**Tuesday 22nd May**  
**'LONGFIELD – A Work In Progress'**

**Meet at 'Longfield' 6:30pm**  
**Canterbury Road towards Elham – CT18 8HD**  
**Plenty of parking**  
**All welcome**  
**(Contact: Anne 07703 149008)**

*Postling Village is set in an area of outstanding natural beauty. There will be several gardens open around our village, including 2 gardens that can be found in the National Garden Scheme book.*

**POSTLING GARDENS**  
**OPEN**  
**2nd & 3rd June 2018**  
**1pm to 5pm**

Free Car Parking  
 Entry by donation - money collected will be donated to our village church and a local charity.  
 Tea and cakes served in our village hall and plant sale in the car park.

**Rhodes Minnis Village Hall**  
**BEETLE DRIVE**  
**on Friday 25th May at 7.30pm**  
 Teas/coffee and juice provided  
 There are prizes and a raffle

Adults £2 – Children 50p  
 Come and enjoy a fun evening.  
 Newcomers very welcome.





## Lyminge Churchyard Re-Excavation Project

In the 19th Century, the Rector of Lyminge discovered the remains of a masonry building in the churchyard. It is possible that it is the remains of the church built by St Ethelburga in the 7th Century. If so, this building is a very rare and important example of an early church. But records at the time were not good and the remains were reburied 90 years ago. So we do not know for certain what it was. Earlier this year, the Parochial Church Council approved a plan to re-excavate the building and clarify what it really is. Dr Gabor Thomas who conducted the recent excavations in the village has been appointed Archaeological Director.



We are in the process of putting together a bid for funding from the Heritage Lottery Fund. This is a broad-based project designed to address how we communicate the whole history of the village to local residents and visitors alike. We are holding a meeting open to all members of the public to discuss all aspects of the project. This will be your opportunity to hear details of what is planned, to share your ideas for further activities in which people can get involved, and to express your interest in taking part. The meeting will take place on:

**Saturday 19 May at 2.30pm in the Parish Church, Lyminge**

**Speakers: Gabor Thomas (Project Archaeological Director), Rob Baldwin (Project Manager)**

The meeting is open to everyone. The support and participation of local people are critical to the success of this project, so if you want it to happen and if you want to have input into planning the activities that will be part of this project, please come along.

*Rob Baldwin will also be addressing the Lyminge Historical Society at 7pm on 1 May in the Tayne Centre, Church Road, Lyminge, and the Annual Parish Meeting in the Parish Church, which starts at 7.30pm on 10 May.*

If you are interested in exploring this important part of the village's history, or would like to understand more about the project, but can't come to any of the meetings, please contact **Rob Baldwin** on **rob.baldwin50@hotmail.co.uk**

## YOGA WORKSHOPS

### Yoga To Restore And Recharge

**Saturday 23rd June, 9.00am – 12.00pm**

Using gentle sequences, postures and relaxations this workshop will help you recharge and will restore your sense of happiness and wellbeing. If you want to feel relaxed and renewed as the summer approaches, this workshop is just what you need. This workshop is accessible to all ages and levels of abilities.

### Summer Yoga – Harness The Energy Of Summer

**Saturday 21st July, 9.00am – 12.00pm**

Why not celebrate the approaching holidays and the beautiful weather – fingers crossed – with a restorative morning of yoga, relaxation and meditation. Through gentle yoga sequences, some short meditations and breath work, you will energise your body and calm your mind. This workshop is accessible to all ages and levels of abilities.

**Where?** Rhodes Minnis Village Hall, Chapel Lane, Rhodes Minnis, CT4 6XR

**How much?** £20/person, includes tea/coffee & cake.

**For more details**, please contact me:

07977 503 897 or my website: <https://treelightyoga.wordpress.com/blog/>



## Elham CofE Primary School

invites you to its

### 'MYTHICAL CREATURES' SUMMER FAYRE

**SATURDAY 23rd JUNE 11am - 2pm**

**FREE ENTRY**

**Prepare yourselves for 'out of this world' fun!**

Giant Inflatables, BBQ, Sweets, Berries and Cream, Summer Teas, Craft Stalls, Tombolas, Grand Prize Draw Raffle,

'Mythical Creatures' Bake Off cake competition and our very own 'fantasy-fuelled' Gymkhana (Hobby Horse, Unicorn, Dragon, Flamingo, Swan or broomstick provided), Plus LOTS more fun and games!

**PLEASE SUPPORT OUR VILLAGE SCHOOL!**

Fayre will be situated on the school field (in event of rain, please see the main gate for a notice re alternative arrangements)

Elham Church of England (Aided) Primary School, Vicarage Lane, Elham, Kent, CT4 6TT



**Tayne Centre  
MARKET**  
Church Road, Lyminge



**SATURDAY 19th May**  
**9am - 12 noon**

Pies, Preserves, Crafts, Cakes, Gifts,  
Vegetables, Jewellery, Cards.

**Teas, Coffee, Bacon or Sausage in Roll**

Tables £5 or £8 Tel: 01303 862710

## FAMILY HISTORY

### Interested in your ancestry?

Lacking the time or expertise to research it yourself? Then give me a call, or email me, to arrange a free, no obligation, initial chat. Research is undertaken at very affordable rates to suit your pocket.

Clive Stanyon: 01303 840820 07771 922192

[stanyonc@aol.com](mailto:stanyonc@aol.com)

## Park House Sanctuary Boarding Kennels & Cattery

Park House, Stelling Minnis CT4 6AN  
Brick-Built Heated Kennels ~ Daily Walks  
Reasonable Rates ~ Dogs must be fully inoculated  
Heated Cat Chalets ~ Quiet Area Inspection Invited.  
To book or for further information, call  
01303 862622 or email [lord.whisky@btinternet.com](mailto:lord.whisky@btinternet.com)  
[www.lordwhisky.co.uk](http://www.lordwhisky.co.uk)

## Technical Help When You Need It!

Gadget setup Internet help and training  
Purchase advice Security concerns (parental advice)  
Help with email TV remotes and tuning PC & Mac  
For all those little problems you want to sort.

Call Nigel on 01303 647220 or email  
[nigel@digitaldoctor.me](mailto:nigel@digitaldoctor.me)

**Experienced and qualified, 20 years in IT. Excellent rates.**

## Rhodes Minnis Cat Sanctuary



REHOMING & BOARDING CATTERY

- Our Sanctuary takes in and rehomes 250 unwanted cats and kittens each year. A variety of cats are always available to suitable homes.
- Our Boarding Cattery is licensed to board 80 cats.
- We are open to visitors every day from 10-1 & 2-4. No appointment necessary.



Tel: 01303 862 243  
[www.rhodesminnis.co.uk](http://www.rhodesminnis.co.uk)

## Lady Painter

All aspects of painting including  
furniture



Contact Christine for a free estimate  
01233 750378 or 07866 002627  
[cfoxelmsted@yahoo.co.uk](mailto:cfoxelmsted@yahoo.co.uk)

## Help your child go far with Kip McGrath

Our qualified teachers create individual  
tutoring programmes for your child,  
using proven Kip McGrath methods.

☒ Maths ☒ English ☒ Reading ☒ 11 Plus



**Kip McGrath** EDUCATION CENTRES

Folkestone & Hythe Centre

17, Manor Road, Folkestone CT20 2SA  
01303 249 100

[folkestonehythe@kip-mcgrath.com](mailto:folkestonehythe@kip-mcgrath.com)

Ofsted Registered  
Childcare Provider

Call today  
for a FREE  
assessment

[www.kipmcgrath.co.uk/folkestone-hythe/](http://www.kipmcgrath.co.uk/folkestone-hythe/)

Editor: [pb@pbarnes20.plus.com](mailto:pb@pbarnes20.plus.com)

## Matthew Reynolds Window Cleaning Services

More than 20 years experience in Lyminge  
and surrounding villages  
For free estimates, please call  
**07975 510293**

HAND MADE CURTAINS, ROMAN  
BLINDS AND SOFT FURNISHING  
CURTAIN ALTERATIONS

**TEL: VALERY WREN 01303 237755**

## Andy Mannering Flooring

SPECIALISING IN AMTICO AND KARNDEN  
LUXURY VINYL TILES

- Also safety flooring, rubber flooring, etc.
- Commercial and domestic work undertaken
- No job too small
- Free estimates and advice given
- Over 35 years experience
- Fully insured



Telephone: 0797 434 7248 or 01303 863095

Email: [info@andymanneringflooring.com](mailto:info@andymanneringflooring.com)

Please visit my website for further information and  
feedback [www.andymanneringflooring.com](http://www.andymanneringflooring.com)

## RECRUITING NOW



Would you like a flexible, rewarding career in care?  
Are you looking for full time hours? Part time work to fit in  
around your lifestyle? or to hours top up your weekly income?

Benefits of working in Homecare with Nurse Plus-

Flexible Hours - day, evening and weekend work

Excellent Weekly Pay - up to £10.37 per hour, plus holiday pay

Rewarding career - job satisfaction

No experience needed - Start a new career

Free Training - Qualification opportunities

Staff Benefits - Staff Lottery & Plus Points Scheme

Call Nurse Plus today: **01303 250200**

[www.nurseplusuk.com](http://www.nurseplusuk.com) [homecare@nurseplusuk.com](mailto:homecare@nurseplusuk.com)

## Shuttlesfield Barn - 4\* Gold - Self Catering



Rural location in Kent's AONB  
Families and all pets welcome.  
Two bedrooms, ensuite shower  
and wet-room. WiFi. TV/DVD.  
Holiday, short & relocation stays.  
Heated outdoor pool (Summer)  
CT18 8LB 01303 862729  
Web: [www.shuttlesfieldbarn.co.uk](http://www.shuttlesfieldbarn.co.uk)  
Email: [info@shuttlesfieldbarn.co.uk](mailto:info@shuttlesfieldbarn.co.uk)



# Now In Your Area

Shutters by Sophisticated Living  
Unbeatable on quality and price!  
Call us for a no obligation quotation.

- Hardwood • Direct from the manufacturer • Made to measure
- All shapes & sizes for all windows • Wide range of styles
- 40+ colours & finishes • Installed by qualified craftsmen

Call: 01303 779595

Email: [shutters@sophisticatedliving.co.uk](mailto:shutters@sophisticatedliving.co.uk)

Shutters by  **SOPHISTICATED LIVING**



**Lyminge  
Pre-School**

**Ofsted  
Outstanding**

Lyminge Preschool provides quality Early Years education and day care all year round for children aged 2-5 years. The Pre-School is run by a team of qualified, highly experienced and dedicated practitioners.

Lyminge Pre-school has a safe, stimulating and fun environment that provides support and challenge for all of the children's individual needs. We welcome all children from the age of two from all surrounding areas.

To arrange to meet the team, please call 01303 863149 (day) or email [lymingepreschool@gmail.com](mailto:lymingepreschool@gmail.com) and visit our website [www.lymingepreschool.org.uk](http://www.lymingepreschool.org.uk)

## Etchinghill Baby & Toddler Group

We are a friendly toddler group, which caters for babies and children from 0 to school age. Crafts, messy play, trikes, toys and a singing session are included each week. In dry weather there is also outside access for the children to play.

We meet on Wednesdays between 10am - 12noon at Etchinghill Village Hall. We charge £2 per family, 1st session is free. Tea/coffee and healthy snacks are provided.

If you have any queries please contact

**Cait Byrne - 07850757571**

## Lyminge Baby and Toddler Group

We'd love you to bring your little ones along to our informal and friendly group for lots of fun. Come along and join us for craft, singing and lots more. We meet every Tuesday morning at the Tayne Centre 10.00-12.00, term time only. Cost: £2.00 per session, including refreshments for all.

Call: Any enquiries – **Jenny 0756 4130569**  
**Sarah 0798 4939220.**

E-mail: [lymingetoddlergroup@yahoo.co.uk](mailto:lymingetoddlergroup@yahoo.co.uk)

## Rhodes Minnis Toddler Group

-needs new members



We need new members and so if you are looking for something to do with your 0-4 years old we would be pleased to see you between 10am - 12noon on Thursday mornings (term time) at Rhodes Minnis Village Hall.

Cost to include refreshments £1.50 per morning  
For more information phone **Elaine** on **01303 863096**

## Lyminge Library Opening Times

Monday	2 - 5pm	Tel: 03000413131 <a href="mailto:lymingelibrary@kent.gov.uk">lymingelibrary@kent.gov.uk</a>
Tuesday	9 - 12noon	
Wednesday	Closed	
Thursday	9 - 6pm	
Friday	9 - 12noon	
Saturday	10 - 2pm	

## Looking for homecare services?

Our experienced Care Assistants are on hand to offer support to the elderly, people with a learning or physical disability or other care needs for home services no matter your needs -

- ✓ One call a day to multiple calls
- ✓ Short term or long term packages
- ✓ Home from hospital assistance
- ✓ General assistance or complex care
- ✓ Weekday, weekends, days, night call times

**NURSE PLUS**

Contact your local branch today  
**01303 250200**  
[www.nurseplusuk.com](http://www.nurseplusuk.com)

Direct Payments Accepted



## PIANO LESSONS FOR ADULTS

Have you always wanted to learn to play the piano but have lacked the opportunity, or faith in your own ability? Did you learn as a child and now regret having given it up?

I specialise in teaching adults and have developed a method which will enable you to progress quickly and with great enjoyment.

**Please contact: Lise Cribbin, Bridge 01227 637709**

**HYTHE  
AQUA**

**swim21**  
Club Accredited

**CLUB  
MARK**

## Adult Swimming with Hythe Aqua

- Can you swim lengths (25m)?
- Are you between 17yrs and 70yrs+++++
- Do want to improve your swimming skills?
- Do you want to improve your fitness?

We can help you improve under the direction of our experienced Swimming Coaches. You may want to simply improve your swimming skills and fitness, or even take part in competitions such as Masters Swimming, Triathlons or Open Water – we can help. Two sessions available each week, starting session Fridays at 8.00pm – Hythe Pool.

To book your place phone: 01303 862353 or checkout our website: [www.hytheaqua.org.uk](http://www.hytheaqua.org.uk)



## Rhodes Minnis Village Hall

Charity No.800345

Rhodes Minnis Village Hall is located 2kms (1¼miles) from Lyminge and just off Longage Hill and Whitehorse Lane in Chapel Lane

The hall, which holds Hallmark accreditation, is ideal for children's parties, band practice, quizzes, meetings and fundraising events and has the capacity to take parties of up to 100. The rates include the use of the kitchen.

### Rates

Mon to Fri £15 per session £40 all day  
Sat & Sun £20 per session  
£30 for evening session and £60 all day

### Sessions

AM session 08.30 - 12.30

PM session 13.30 - 17.30

Evening session 18.00 - 23.45

There are special rates for regular users.

For all bookings and enquiries please contact:

**Martin Fry 01303 863177 e-mail: book @rmvh.org.uk**

"Sometimes being a friend means mastering the art of timing. There is a time for silence. A time to let go and allow people to hurl themselves into their own destiny. And a time to prepare to pick up the pieces when it's all over."

— **Octavia Butler**



# Lyminge Primary School Summer Fayre Sat 7<sup>th</sup> July 11-2pm

Family friendly dog show,  
'The Bug Man', Inflatables, Raffle,  
Displays, stalls, obstacle course, BBQ  
and much more.....  
Come and enjoy the fun!

"The only thing worse than being blind is having sight but no vision."

— **Helen Keller**

## Lyminge Village Hall

Registered charity 28145

**Large, refurbished, flexible hall with great facilities**

From Theatre productions to Weddings, Craft Fayres to Childrens' parties – we've got it all covered!

**Capacity:** 200 people dancing / audience seating,  
100 for table seating, 50 or less for meetings

**Well equipped:** stage, kitchen, small rooms, ample parking  
facilities, disabled access

**Access to:** playground, skate park, large playing field &

**Situation:** Rolling hills behind and the Church to the front.

Find out how we can help you with your next event:

**BOOKING LINE: 07497625 741**

**EMAIL: info@lymingevillagehall.org.uk**

*Guideline prices*

**MAIN HALL HIRE ~ Fri, Sat PM £65**

**SMALL ROOM ~ £20**

**EXCLUSIVE ALL HALL ~ £320**



Find us on Facebook  
or follow us on Twitter @Lymingevhall



## ETCHINGHILL VILLAGE HALL HIRE FEES

The next time you are thinking of holding a function why not try Etchinghill Village Hall, which holds the highest Hallmark accreditation level (Hallmark 3), with its excellent facilities, including ample parking space. The standard hire charge for the main hall and kitchen are:

Weekdays £11.00 per hour

Saturdays £13.00 per hour

Sundays £13.00 per hour

During the winter months (1 November to 31 March) a Winter Supplement of £1.00 per hour is added to the above rates.

Special rates apply for Weddings and all day events with discounts on the above rates applying to Etchinghill Residents and Regular Hirers.

The use of a separate Committee Room is also available.

For all bookings or enquiries please contact:

**The Duty Manager on 07514-758936**

## TAYNE CENTRE HALL HIRE

Previously known as the Lyminge Methodist Church Hall



### Clayson Hall

1 October to 31 May (including heating) £9.50 per hour :

£34.00 per 4 hour session : £66.00 full day

1 June to 30 September

£7 per hour : £25.00 per 4 hour session : £48.00 full day

**Rigden Room (Parlour) with heating, if required\***

£7 per hour all year (\*electric - over heaters).

**Burren Room** - storage only

### Overnight Stays

1 June to 30 September £50; 1 October to 31 May £60

For any enquiries please call **07971 722 401**

# EVENT PLANNER

This page is printed to give readers and organisers the opportunity of planning events without clashing with existing ones, which are already in the 'diary'. It is not intended as a means of advertising and we take no responsibility for errors or omissions. Acceptance is at the discretion of the editor. Please send your updates by email to [pb@pbarnes20.plus.com](mailto:pb@pbarnes20.plus.com) or via methods outlined on Page 2. Location and name codes follow:

**C&H:** Coach & Horses; **ECC:** Etchinghill Cricket Club; **EVH:** Etchinghill Village Hall; **ERA:** Etchinghill Residents' Association; **ELVH:** Elham Village Hall; **ES:** Elham Square; **JC:** Jubilee Centre; **JF:** Jubilee Field; **KH:** Korf House; **LB:** Laing Bennett; **LBC:** Bowls Club; **LL:** Library; **LMC:** Lyminge Methodist Church; **LPC:** Lyminge Parish Church; **LSH:** Lyminge School Hall; **LVH:** Lyminge Village Hall; **LW:** Lord Whisky; **NP:** Nailbourne Court; **NVH:** Newton Village Hall; **PC:** Postling Church; **PH:** Lord Whisky, Park Hse; **PVH:** Postling Village Hall; **RVH:** Rhodes Minnis Village Hall; **RMC:** Rhodes Minnis Church; **RR:** Rigden Room; **SNL:** See News Letter for info; **SP:** Sibton Park; **TC:** Tayne Centre; **TF:** Tayne Field; **WF:** Well Field; **RMCS:** Rhodes Minnis Cat Sanctuary

## One-Off Events

Date	Time	Event	Where	Tel. No.	Date	Time	Event	Where	Tel. No.
05-May	10am	Lyminge Litter Pick	LVH	863737	29-Jul	7.30pm	Rudes Theatre "Oberon's Cure"	TF	862743
10-May	7.30pm	Lyminge Parish Council Annual Meeting	LPC	07715221705	16-Sep		Autumn Garage Safari		863537
13-May	10.30am	Lyminge Fun Run	LVH		22-Sep		The Great War Victory Tea'	LVH	
16-May	8.30pm	Tayne Field Play Park Project Update	TC		06-Oct		Autumn Stream Clean	WF	862508
19-May	2.30pm	Lyminge Churchyard Re-Excavation Project	LPC		20-Oct		Autumn Quiz	LVH	862928
19-May	7.30pm	Fun Spring Quiz	EVH	0754 4670363	End Oct		Celebrating Archaeological Digs Day	TF	
20-May	6pm	Etchinghill Village Hall AGM	EVH	863819	End Oct		Archaeological Update – Dr Gabor Thomas	LMC	
27-May	11am	Spring fair	RMCS		11-Nov		Remembrance Sunday	LPC	
2/3 June	1pm	Postling Gardens			24-Nov		St Nicholas Fayre	LPC	862073
15-Jun		Music on Friday - Memory Lane	LPC		29-Nov		Switching on Christmas Lights		
16-Jun	7.30pm	Haywardians Choir Concert	LMC		19-Dec	7pm	Cantores Concert		07813 071867
23-Jun		Junior Dragon's Den	TC	863737	21-Dec		Delivery of Christmas Presents		
21-Jul	7pm	Cantores Lyminge Prom	LVH	07813 071867					

## Weekly Events

Day	Time	Event	Where	Tel. No.	Day	Time	Event	Where	Tel. No.
Mon	10am	Open House	EVH	863394	Wed	10.45am	Singing For Health	JC	862364
Mon	10am	Bridge Club	LBC	863177	Wed	11.45am	Pilates	TC	07825109670
Mon	10.30am	Lyminge Larks (Singing)	LMC	07951 572920	Wed	2pm	Bingo	EVH	863819
Mon	11am	Cookery	JC	269602	Wed	7pm	French Conversation	KH	862972
Mon	2&3pm	Computer Buddy (need to book)	LL	03000413131	Wed	7.30pm	Cantores Dominicae Choir	LMC	07813071867
Mon	2.30pm	Knit and Natter	TC	863049	Thur	9.30am	Baby Rhyme Time	LL	03000413131
Mon	6.30pm	Ballroom/Latin/Salsa Dancing	TC	07966 751991	Thur	10am	RM Toddlers Group	RVH	863096
Mon	6.30pm	Judo Club	LVH	862946	Thur	10am	Art Group - Morning	TC	211364
Mon	7.30pm	Yoga	RMVH	07977503897	Thur	11am	Shopping trips to Supermarket	JC	269602
Tues <sup>1</sup>	10am	Baby & Toddler Group	TC	863274	Thur	2pm	Art Group - Afternoon	TC	862972
Tues	10am	Baby Signing	EVH	07800737936	Thur	7.30pm	Ballroom and Salsa Dancing	EVH	07967979610
Tues	10.30am	Art Class	JC	269602	Thur	6.45pm	Short Mat Bowls	LVH	863842
Tues	11.15am	Chairotics	JC	269602	Fri	10am	Feel A Fairy Tale Sensory	EVH	07800737936
Tues	11.15am	Feel A Fairy Tale Sensory	EVH	07800737936	Fri	10am	Talk Time	LL	03000413131
Tues	6.45pm	Short Mat Bowls	LVH	863842	Fri	11.15am	Baby Signing	EVH	07800737936
Tues	2pm	Pickleball	EVH	863819	Fri	11am	Seated Exercise	JC	269602
Wed	10.15am	Mature Movers (Exercise)	TC	862873					

## Monthly Events

When	Time	Event	Where	Tel. No.	When	Time	Event	Where	Tel. No.
3rd Mon	7.30pm	Etchinghill Cinema	EVH	863333	2nd Wed	10.30am	Mothers Union	NP	862221
Last Mon		Parish Council Meeting	SNL	07715221705	4th Wed	2.30pm	RM Circle	RVH	862913
1st Tues	10.30am	Reading Group	LL	03000413131	Last Wed	7.30pm	Quiz Night	C&H	862694
1st Tues	11am	Reminiscence	JC	269602	1st Thurs	7.30pm	British Legion, Elham Branch	St Mary's Hall, Elham	862508
1st Tues <sup>3</sup>	7.30pm	LHS Talk/Event	TC	862972	4th Fri	7.30pm	Beetle Drive	RVH	862616
3rd Tues	9.45am	Family History	LL	03000413131	Last Fri	1.30pm	Team Quiz	JC	269602
3rd Tues <sup>3</sup>	7.30pm	Gardening Society	TC	862264	1st Sat	10am	Village Market	EVH	863819
Last Tues	10.30am	Poetry Group	LL	03000413131	2nd Sat	10am	Postling Ch. Coffee Morning	PC	863536
1st Wed	10.30am	Lyminge Friends	RR	862598	3rd Sat	9am	Saturday Market	TC	862164

<sup>1</sup> In term time only <sup>2</sup> Except Jan and Feb <sup>3</sup> Except Jan, Feb, and trip in Aug <sup>4</sup> Except Aug and Dec



# Out and About

*Do you have any photos of local events or local groups in action, please call 01303 862699. Give your group a FREE plug !*



🏠 **The Good Friday Service at Lyminge Methodist Church** with the congregation prepared for the rain which had decided to fall.



🏠 The sun shone on the merry band of volunteers which turned out to clear the Nailbourne to keep the stream flowing over the clean gravel and to help keep Well Field a pleasant place to sit and enjoy the good weather !

## Mystery Photo



Last month's picture was taken looking down on to the Nailbourne as it goes under Canterbury Road behind Pendragon House.

Where have you seen this crown ?

## GARAGE SAFARI

This looks like a proper family business ! ➡

The weather was really kind on the 21st April when over 60 'stalls' opened in our villages.

➡ **Lyminge Youth Action** with their raffle and goodies to raise awareness of their Play Park Project



🏠 The winners at the **Lyminge Gardeners Society's Spring Show** held on 7th April. Left to right; Gill Broadley, Verionica Tate, John Packer, Oscar Smith and Gerry Newman.

Look at those daffodils ! ➡

**John Packer** with his three winning daffodils at the Lyminge Spring Show.





## D.M.B. Plastering

All aspects undertaken  
*Interior. Exterior. Plastering. Rendering.  
Coving. Ceilings Wall. Floors*  
*Finest quality assured. CSCS Certified.*  
30 years experience.

Free estimates. Reliable service. Fully insured.  
Call **David** on **07818 607209**

## P Davis + Co

General Builders and Roofing Specialist  
All work undertaken  
Call for free estimate

**Tel: 01303 863049 or 0784 6769643**

## Personal Computing

For straightforward I.T. advice, solutions  
and training

Contact: **Steve Ashman**  
**862869**

**sra@ashman-consulting.co.uk**

## B.M. Plumbing & Maintenance Services

Local Lyminge Tradesman

Plumbing and heating works. Complete bathroom  
install including tiling. General building maintenance  
undertaken. No job too big. No job too small.

Cheaper rates for senior citizens



**07890854128 Benmillsplumbing@hotmail.co.uk**

## Wilco Plumbing & Heating

Central Heating Installations & Repairs  
Gas & Oil Boiler repairs & replacements  
5 Year Guarantee on Worcester Bosch Boilers.  
Local Experienced Engineer, Emergency plumbing 24/7 call out  
Registered with the Institute of Plumbing  
Gas Safe Registered-OFTEC Registered  
**01303 862173 07860 452640**  
**paul@wilcoplumbing.co.uk www.wilcoplumbing.co.uk**

## TOBY'S TREE SURGERY

THINNING - REDUCING - MAINTENANCE - FELLING  
TURFING - STUMP GRINDING - GARDEN CLEARANCE  
HEDGE CUTTING - FENCE REPAIR  
Professional Friendly Service

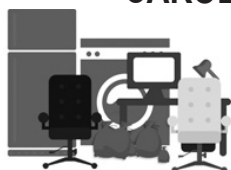
**FREE ESTIMATES - FULLY INSURED**

Contact **Toby Griggs:**  
**07854 098 395**

**or (01303) 489795 or tobystreesurgery@gmail.com**

House Clearance covering South East Kent.....and beyond!

## CAROL CREES CLEARANCES



- Est. over 30 years  
Full/part house clearance  
Fair prices paid  
Antique/Vintage/Retro/Modern  
Registered rubbish carrier

Contact **Simon Cullen** on **07745 421680** or **sijnzo@aol.com**

## East Kent Foot Care

Mobile Foot Health Practitioner

**Jo Shapter** BSc (Hons), MCFHP, MAFHP

Treating and managing common foot problems,  
corns, callus, verrucae, thickened nails,  
toe nail management, fungal problems,  
diabetic foot assessments etc.

**Call: 07745 532075**

Member of the British Association of Foot Health Professionals



Total garden care for all your needs

## TIM MILLETT

Grass Maintenance, General Gardening, Small & Medium  
Size Tree Work, Stump Grinding and Wood chipping  
Fencing Repairs & New Installations  
Turfing, Hard & Soft Landscaping

Free Estimates - Fully Insured

**01303 863676 07752 880583**

Email: **info@tmhorticulture.co.uk**

## THE BIG LITTLE BATHROOM COMPANY



COMPLETE BATHROOM SUITES • BESPOKE CAST IRON RADIATORS  
TAPS • SHOWERS • TILES • ACCESSORIES • TEA & COFFEE

CANTERBURY ROAD, ETCHINGHILL, KENT CT18 8BS  
sales@theblbc.co.uk • 01303 864349 • www.theblbc.co.uk

## N.P.C.

Domestic Appliance Services

Service and repair of washing machines, tumble driers,  
dishwashers, cleaners and small electrical work.

For a prompt and friendly service

Call Neil Collard 01303 892234 or 07798716044  
or Google me on Yell.com

## Auto Economy Centre

Fully equipped Mechanical Repair & Service Centre

with the latest diagnostic equipment  
MOTs £44.95

**01303 863656**

**Orchard Garage, Canterbury Rd, Etchinghill**  
**www.autoeconomycentre.com**

## Old English Pine

Antique, repro pine, oak and French-style painted furniture with beautiful and reasonable priced accessories to make  
your house a home. Bespoke pine units made to order. Huge shop - over 3 floors. Open 7 days a week.

**Tel: 01303 248560 www.oldenglishpineinkent.co.uk 100/102 and 90 Sandgate High Street, Sandgate**

## Financial Planning

**David Gridley - Chartered Financial Planner**

Range of quality advice from a fully qualified adviser:

- Pre- and Post-Retirement Planning
- Investment Planning
- Inheritance Tax Planning

For further information, please contact our Lyminge office

David Gridley APFS

Tel: 01303 863959 Email: davidgridley@sjpp.co.uk

## Local Ironing Lady

Smart,  
Friendly Service

**smartpress**  
SERVICES

Free delivery & collection – min order £10

Call or text - 01303 864229 / 07702 321686  
tash@smartpressservices.com

## OIL BOILER SERVICE

*Professional Friendly Service. Prompt Response to Breakdown Calls. Over 40 Years Experience.*

For Routine servicing, emergency breakdown calls and commissioning, contact:

**P & V QUENBY LTD (Est 1987)**

**01227 760428**

**www.oilboilerskent.co.uk**

## T. Metcalfe Fencing Contractors

Approved Expert Installer for Jacksons Fencing

Established over 30 years

Fully insured - Highly experienced teams



Panel fencing, gates, decking, pergolas, post & rail, stock fencing, security, landscaping & tree surgery.

**01303 840201 07790 290 155**

metcalfefencing@btinternet.com

Proprietor - Derek Burr,  
Ash Ridge House, Elham



**OAK**  
creative



we're at Newingreen, call for a chat on 01303 812848

**www.oakcreative.net**

Advertising  
Branding  
Digital Design  
Illustration  
Marketing  
Print Design  
Web Design & Development

Are you running out of space and need an extension?

Or perhaps you would like to remodel your house?

Friendly local architect available to help you realise your dream home.

For a no-obligation consultation,

contact Salma Barwani at

ruddbarwaniarchitects@gmail.com

or call 07770 196190



*Dog walking, pet and smallholding sitting, dog day care, dog accommodation & dog playground and so much more....!!*

Free (no obligation) consultation.

CV & references available.

Fully insured and security screened.

Mobile: 07582407637 Email: susannahparkin@googlemail.com

Website: caninecare.thespringrise.co.uk

## Essential Beauty

reflexology : aromatherapy : collagen mask facials  
non-surgical perceptor : facials : cuccio gel varnish  
manicures & pedicures : waxing & eyelash/brow tinting

Therapist with 20 years experience

Call Janene Moat 01303 840052

The Limes, High St, Elham.

Free eyebrow tidy for new clients.



## Mini Digger and Operator for Hire

Call Mick for a competitive quote

Mobile: 07979 881873

Landline: 01303 862079

Email: mickattwell@btinternet.com



**ASHTON**  
**TREE CARE**

07929 627622 • 07769 908027

OLLIE@ASHTONTREECARE.CO.UK

City & Guilds  
NPTC

**ALL WORK FULLY INSURED**  
**HEDGE CUTTING • STUMP GRINDING • TREE SURGERY**

**SPEARPOINT**  
TREE SERVICES

All Aspects of Tree Work Undertaken  
NPTC Qualified  
Fully Insured  
Please call **Shane** for a Free Quote  
**07963 203564** or **01303 621992**



## Sarah de Rougemont

Craftsman/Co-ordinator

## UPHOLSTERY

All commissions considered  
01227 455841 or 07973 377817



## Bookkeeping Services

**www.aabookkeepingservices.co.uk**

Bookkeeping • Financial Accounting and Accounts Preparation for Sole Traders and Partnerships  
Word, Excel, Outlook, Sage and VT Final Accounting Software Self-assessments and VAT returns

Over 10 years' financial experience. Fixed prices available or hourly rate £15 per hour

Anita Adams BSc (Hons) AATQB MAAT Contact: 07891 135766 or 01303 864254 or anitaadams@live.co.uk



## Ralph Allard Chimney Sweep



All chimneys, boilers and stoves swept.  
Brush and Vacuum. Certificates issued.  
HETAS and NACS registered, fully insured.  
Member of National Association of Chimney Sweeps  
**01303 844465 or 07813716654**

## AIR LINK CARS

(You pack up, we pick up)  
Airport, Seaport & Long Distance Travel Specialists.  
The Family Run Business where service really counts  
Estate cars and People Carriers



Fixed price 24hrs a day. No extras.  
Written Confirmation of booking.  
For the Easy Airport Link, Think AIR LINK!  
**01303 670370 - 07766 824 474**  
airlinkcars@yahoo.com

**THE CLINIC**  
Garden Suite  
Pendragon House  
4 Station Road  
Lyminge  
Kent CT18 8HP  
**01303 863359**

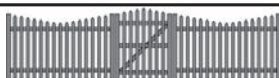


info@theclinic-lyminge.co.uk  
www.theclinic-lyminge.co.uk



## Sunhouse Electrical

Your local reliable Electrician  
Part P Registered & Elecsa Approved  
On Electrical Safety Register & Fully Insured  
For a free quotation call James on  
**01303 766333**  
**www.sunhouse-electrical.com**



**GOSBEE CONSTRUCTION**  
**Fencing - Gates - Paving - Resin Bonding**  
35 years experience.  
Jacksons Expert Installer  
Call Martin Gosbee  
07974 835511 01303 863337  
gosbeeconstruction@gmail.com

## Figures 4 Business LLP

Plan - Monitor - Control



Denise Roberts ACIS, ACMA

- Business plans and budgets
- Bookkeeping and payroll services
- Financial reporting & monitoring
- Qualified Company Secretary
- Qualified Management Accountant
- over 25 years experience

T: 07511 097707

E: [droberts@f4b-kent.co.uk](mailto:droberts@f4b-kent.co.uk)

W: [www.f4b-kent.co.uk](http://www.f4b-kent.co.uk)



## MANOR VETERINARY CLINIC

We care for them all, great and small

Lyminge Clinic: Methodist Church Hall  
Monday, Wednesday & Friday 4-6pm

**Please call to book an appointment - 01303 273203**

**www.manorveterinaryclinic.co.uk**

## STERRY'S

*Independent  
Funeral Director*

01303 272525  
93 Cheriton High Street  
(opp Co-op)

01303 264400  
41 High Street, Hythe  
(opp Lloyds Bank)

Always here for you; 24 hour service. Home visits on request.  
Choice of pre-paid funeral plans



## Aerial Drone Photography & Video

WEDDING VIDEO & FRAMED PHOTOS  
DOMESTIC HOME FRAMED PHOTOS  
BUSINESS PROMOTIONAL VIDEOS

**Call Will Wright for a Quote**

**PRICES FROM £99!**

**01303 863460 OR 07905 031850**

**www.amazingaerialviews.com**

## REGISTERED OSTEOPATHS & MEDICAL ACUPUNCTURIST

**Adam Price B.Sc Hons (Ost) Katie Price B.Sc Hons (Ost)**  
The Clinic 01303 863359 or mob: 07980 897382

- Treatment of lower back pain, both acute and chronic
  - Treatment of tension/cervical type headaches both acute & chronic
  - Treatment of various stiff & painful arthritic conditions
  - Treatment of sports injuries, both soft tissue & skeletal
  - Deep tissue back, neck & shoulder massage for symptomatic relief
- The cost of your treatment may be recoverable from your insurers. Please check

## LYMINGE FOOD AND WINE 01303 862225



We are here to serve you  
Mon. - Sun. 7:00am to 9:00pm  
including Bank Holidays  
National Lottery Here



## South East Aerial & Satellite Solutions

Digital - Freeview - Satellite - Aerials

Supply and fit of quality digital installations, FREEVIEW, SKY,  
aerials, poor reception and problem solving, upgrades and  
repairs by fully accredited engineers

Free quotations and advice, fixed prices, fully insured

**Freeview**

**NO CALL-OUT CHARGE**  
**07825 168010 - 01303 862361**



## HOME VISITING OPTOMETRIST - providing professional eye care in your home

If you are over 60 years of age and no longer able to get out on your own, then you are eligible for a NHS  
sight test in your own home. Please call to arrange an appointment:

**Elaine Edwards BSc(Hons)MCOptom 01303 840541**

Registered with the General Optical Council (01-15421) Member of the College of Optometrists Member of the Association of Optometrists



## COUNTRY FARE

### CATERING SERVICES

Country Weddings, Christenings and All Family Gatherings, Corporate Lunches, Seasonal Parties & Celebration Cakes

Sally Burr 01303 489795 07814 610995  
sallycountryfare@gmail.com

## FRESHLOOK GARDENS

Regular lawn mowing service. Garden design. Hard and soft landscaping. General garden work, fencing and decking. Turfing hedge cutting, small and medium tree work. Water features, ponds and patios.

For free quotation ring **Danny Scott**  
01303 242140 or 07795510093  
mrdanscott89@gmail.com

Established since 1990. Fully insured.

## Filehurst Associates

Tel: 01303 239990 E: info@filehurst.co.uk

Domestic & Business Removals - UK & France  
Long or Short Term Storage  
Business Document Storage  
**Call now for a no obligation quote**



colebrooksturrock.com

still THE local and regional specialist...

SALES & LETTINGS  
Call now for your free market appraisal  
**01303 840422**  
elham@colebrooksturrock.com

incorporating  
**Browns**

Sandwich	Bridge	Minster	St Margarets At Cliffe	Walmer	Saltwood	Elham	Hawkinge
01303 841119	01303 841119	01303 841119	01303 841119	01303 841119	01303 841119	01303 841119	01303 841119

## Computer Repair & Support

PCs, MACs, Laptops, Tablets & printers,  
Upgrades & Repairs, Internet & Email, virus removal,  
Office Setup, Backup & Recovery & much more ...  
Tuition available by a qualified tutor.

Usual Fee £55

Web sites built & hosted from £10 per month  
See [www.computers-in-lymington.co.uk](http://www.computers-in-lymington.co.uk) for details  
Ring Tony for a fast and friendly service



Local Tradesman

## J Tappenden

Established 36 years

Painter/Decorator/Builder

01303 862467

077755 78008



**Alan Croucher**

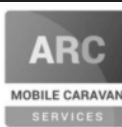
**Caravan Engineer**

**07921 480919 - 01303 863194**

**Caravans & Motorhomes "WE COME TO YOU"**

[www.arcmobilecaravanservices.com](http://www.arcmobilecaravanservices.com)

"Your manufacturer's warranty is safe in our hands"



## Jackson Plumbing Property Maintenance

Complete bathrooms and tiling  
No job too small. Special rates for OAP's.

Telephone: home/evening 01303 270691  
or daytime 07773 089398 or 07864 929826

## M. J. Athrow

BUILDER & DECORATOR, EST. 1965  
GENERAL MAINTENANCE

Qualified and Insured. Free estimates  
Telephone: 862616 Mobile: 07976 306665  
Email: mick@athow.co.uk

## SIX MILE GARAGE LTD

Stone Street, Stelling Minnis, Canterbury, Kent CT4 6DN

- Car and light commercial servicing
- Class 4 and 7 mots and repairs
- Car and light commercial accident repair centre (insurance approved)
- Diagnostics bay with latest equipment
- Tyre bay with four wheel alignment and balancing
- Air conditioning servicing

Tel. 01227 709214 or 01227 709491, Fax 01227 709331  
E-mail: office@sixmilegarage.co.uk

## Trevor Law Electrical Installations

Serving Elham Valley for 30 years  
Part P Registered

**01303 862348**  
**07850 970087**



## J. V. Services

**Servicing and Repairs:**

- Garden Machinery
- Ride on Mowers
- Trailers & Horseboxes
- Quad Bikes
- Classic Cars

(Free collection and delivery)

## Mobile Mechanic

**Serve/Repair/Full Restoration:**

- Compact Tractors
- Vintage Tractors
- Classic Tractors

**Mobile: 078 0300 3047**  
**john@jvserviceskent.com**



**JBS  
BUILDERS**

Specialising in Driveways, Brickwork, Patios, Fencing, Landscape Gardening. Tree work undertaken (lopping, felling and clearing).

General household repairs, painting, plastering, power jetting & cleaning.

No job too small!! All work guaranteed and insured.

**For free advice and quotations please call: 07825 168010/ 01303862361 (anytime)**





## DILTON MINI SKIP HIRE

Ballast, Hardcore, Sand  
and Topsoil Supplied  
REGISTERED WASTE CARRIER  
**01303 812448 or 07799 433754**

*'Helping you enjoy your garden'*

## CRT Gardening

Knowledge of general gardening, including lawn care,  
hedge trimming and cutting, vegetable garden work, fencing  
installations and repairs, small and medium size tree work and  
ongoing maintenance of all of them.  
Heavy-duty work is also undertaken.  
Free estimates; fully insured. Karl Dodd 07967442518  
Email: karl.dodd@live.co.uk www.crtgardening.com

## Red Dragon I.T. Ltd.



- Windows, Mac & Linux Systems
- PC Health Checks
- Wired & Wireless Networks
- Website Design
- Graphic Design

T: 01303 723456 | E: info@rdit.co.uk | www.rdit.co.uk  
The Old Granary, Hanover Mill, Church Rd, Merham, TN25 6NU



**KW CONSTRUCTION**  
PLASTERING & RENDERING SPECIALIST

ALL GENERAL BUILDING INCLUDING:  
ROOFING, BRICKWORK, TILING, PATIOS,  
LANDSCAPING, SCREEDING, GROUNDWORK,  
DRAINAGE, EXTENSIONS, RENOVATIONS,  
REPAIRS & MAINTENANCE.

30 YEARS EXPERIENCE, COMPETITIVE RATES,  
A FULLY INSURED, PROMPT & RELIABLE  
HIGH QUALITY LOCAL BUILDER

KENNY 07743488361



**Laing Bennett**  
INDEPENDENT ESTATE & LETTING AGENTS  
PHILIP A CHAPMAN

With our excellent local knowledge, service  
and two local offices we will get you moving

The Estate Office 8 Station Road Lyminge Kent CT18 8HP  
T 01303 863393 E lyminge@laingbennett.co.uk  
134 High Street Hythe Kent CT21 5LB  
T 01303 264846 E hythe@laingbennett.co.uk

**www.laingbennett.co.uk**



**Hawkinge**  
Veterinary Surgery

## Veterinary Surgery

Opposite Lidl supermarket

A new independently owned veterinary surgery for small animals.  
Separate waiting, consultation & recovery rooms for cats/small pets and dogs.

Opening hours: Monday to Friday 08:00-19:00

Saturday 08:30-13:00 24 hour emergency service

**Hawkinge Veterinary Surgery 9b Defiant Close Hawkinge**

**CT18 7SU Tel: 01303 764190**

www.hawkingevetsurgery.co.uk

hawkingevetsurgery@gmail.com

## SNIPPERS & CLIPPERS UNISEX HAIR SALON

✂ APPOINTMENT NOT ALWAYS NEEDED

✂ WEDDING & SPECIAL OCCASION

✂ GENTS WELCOME

✂ FREE WIFI

✂ SHELLAC NAILS

4 Station Rd, Lyminge,  
Folkestone,  
Kent, CT18 8HP

01303 647 222  
info@snippersandclippers.co.uk



## SCRUBBERS - Est. 1988

### THE HOME AND COMMERCIAL CLEANERS

One off, regular or moving day 'Blitz'

Oven cleaning - Ironing

Carpet cleaning and more...

For a friendly and reliable service

Free Estimates

**Tel: 01303 249288 or 07834 128671**

## Dennis Huntley

Installer of wood and multi-fuel stoves, heating engineer,

**chimney sweep**

Lyminge 01303 862 343

Mobile: 07850 784 365



## Lou Lloyd Carpenter

**loulloyd@rocketmail.com**

**07984 426214**

Kitchens, Flooring, Wardrobes,  
Doors, Decking and more!



## CEDAR HOME MAINTENANCE General Builders and Roofing Specialist

Roofing \* UPVC windows/doors \* Kitchens/bathrooms  
Plastering \* Electrical installations \* Plumbing  
Call now for a free, no obligation quotation. All work carried out  
by qualified tradesmen. Fully insured - all areas of Kent covered.

**Mobile: 07968197613 Office: 01303 230787**

cedarhm@hotmail.co.uk & www.cedarhomemaintenance.co.uk

## HOLDEN PLASTERING

All aspects of Plastering  
Smooth-over Artex - a speciality.  
Coving, Tiling and Plumbing

Phone JAMES for free estimate or advice on:  
**01303 770449 07773 262970**

## Tressenden Designs

A seamstress and costume maker with 8 years of experience.

- ♦ Clothing alterations ♦ Repair work undertaken ♦ Made-to-measure; create a bespoke piece for those special occasions
- ♦ Modern and vintage designs ♦ Costumes, ball gowns and wedding dresses

For more information or a quote please contact Amy on: **Mobile: 07853 202304 Email: amy.louise.ford@hotmail.co.uk**

