



THE LYMINGE NEWSLETTER

For the communities of LYMINGE, ETCHINGHILL, RHODES MINNIS and POSTLING

April 2019

Produced by
THE LYMINGE ASSOCIATION
www.lyminge.org.uk

 **GARAGE
SALE
SAFARI
and TABLE SALE**

Saturday 13th April
starting at 9.00am

Bargains Galore !

FREE maps showing garage locations will be
available from Lyminge Village Hall,
Lyminge Village Stores, The Coffee Cabin
and the Jubilee Day Centre on the day
or via www.lyminge.org.uk

Refreshments at
Jubilee Day Centre [AgeUK]
and The Coffee Shop

**FREE PARKING IN THE MAIN CAR
PARK AND AROUND THE VILLAGE**

Further information from
Sylvia on 01303 863537
Organised by The Lyminge Association

Stalls also
at Lyminge
Village Hall



LYMINGE BOWLS CLUB

invites

Children, Parents, Grandparents and Friends
to our

OPEN DAY

27th May, 2019

11am - 4pm

Try for free. All you need are flat shoes.

Refreshments, Cakes, Tombola, Children's Games and much more.

HOPE TO SEE YOU THERE.

All children under 16 must be accompanied by an adult.
However, if you can't wait until the 27th May, we offer 6 weeks
free training starting on the 5th May at 10am. Everyone aged
8 years plus welcome!

For further information, please telephone 01303 621822

**HAPPY EASTER TO
ALL OUR READERS**



??

The
Lyminge
Association's

SPRING QUIZ

WHEN ?
Saturday 13th APRIL 7pm

WHERE ?
Lyminge Village Hall

WHAT ELSE ?
**BANGERS & MASH SUPPER
and a PUD !**

Bring your own drinks & glasses
ONLY £8 per head
Teams - maximum of 8

Raffle

Call Dave on 01303 862928
to book a place/table

??



St Mary & St Ethelburga Parish Church Lyminge

APRIL Sunday services

| | |
|------|---|
| 7th | 8.00am Holy Communion Rev. Jane Weeks 11.00am Ways of Worship (WOW) Lay led Easy going service; visuals, piano & guitar |
| 14th | 8.00am Holy Communion Rev. Barry Preece 11.00am PALM SUNDAY Rev. Janet Thornby Eucharist and PASSION NARRATIVE |
| 18th | 6.30pm MAUNDY THURSDAY Eucharist WASHING OF THE FEET followed by 1 hour watch Rev. Jane Weeks |
| 21st | 11.00am EASTER DAY Family Communion Rev. Janet Thornby. For the whole family with <i>Children's Corner</i> |
| 28th | 8.00am Holy Communion Rev. Stephen Dougal 11.00am Sung Communion Rev. Stephen Dougal |

First Sunday in MAY

| | |
|-----|---|
| 5th | 8.00am Holy Communion Rev. Jane Weeks 11.00am Ways of Worship (WOW) Lay led Easy going service; visuals, piano & guitar |
|-----|---|

St Oswald's Church PADDLESWORTH

APRIL Sunday services

| | |
|------|---|
| 7th | 6.00pm Evensong Lay Reader Diana Baldwin |
| 21st | 6.00AM DAYBREAK SERVICE Rev. Jane Weeks followed by breakfast. |

First Sunday in MAY

| | |
|-----|--|
| 5th | 6.00pm Evensong Lay Reader Diana Baldwin |
|-----|--|

To contact the churches please phone: Rev. Jane Weeks
01303 840219 or e-mail revweeks@hotmail.com
www.achurchnearyou.com

LYMINGE METHODIST CHURCH

Visitors are very welcome to join us at our weekly service at **11am** and invited to share fellowship afterwards with a cup of coffee/tea.

7th April - 10.15am Valley Service at Rhodes Minnis

14th April - Mr. Richard Blackwell

19th April - Short Good Friday Meditation

21st April - Rev. Robin Blount (incl. Holy Communion)

28th April - Mr. Ralph Bradshaw

RHODES MINNIS CHURCH

This small Chapel in beautiful countryside holds a weekly Sunday Service normally at **9.30am** followed by coffee and biscuits. A warm welcome is extended to any visitors.

7 April - 10.15am Valley Service - Deacon Carys Woodley

14 April - Mr. Richard Blackwell

Monday 15 April - 7pm Service for Holy Week - Rev. Kevin Taylor

21 April - **NO** service at Rhodes Minnis, united Holy Communion service at Elham Methodist Church at **9.30am**.

28 April - Mr. Ralph Bradshaw

5 May - 3pm Chapel Anniversary - Rev. Helen Hollands

POSTLING CHURCH SERVICES

Wednesday 3rd April 6.30pm Elham Valley Lent Course

Sunday 7th April 9.30am Family Communion

Sunday 14th April 8.30am Breakfast Service for Palm Sunday

Wednesday 17th April 6.30pm Lent meditation

Friday 19th April Good Friday. 12 Noon. An hour in front of the cross

Sunday 21st April Easter Day 9.30am Family Communion

Sunday 28th April No service



CHRISTIANS IN LYMINGE



17th April: AGAPE meal in the Parish Church, 7pm. (please book)

19th April: Good Friday service outside the Methodist Church at 11am.

20th April: Saturday Market in the Tayne Centre.

Bible Study: Every Wednesday Evening in the Parish Church.

Lent Lunches: Come and join us at 12 o'clock in the Rigden Room at the Tayne Centre for a lunch of soup, bread, cheese and fruit all for £4.00. The lunches will be held every Friday in Lent. All proceeds go to "Water Aid".

Every Monday afternoon "Knit and Natter" in the Methodist Church.

For other services please see this page

*"Confidence comes not from always being right
but from not fearing to be wrong."*

Peter T. McIntyre

Lyminge Newsletter

Terms & Conditions: Copy deadline for next edition - 18 April 2019

Please email your copy in to the editor (pb@pbarnes20.plus.com). Your payment must be received before your article or advert can appear in the Newsletter. Please leave your payment along with your name, organisation, telephone number and copy of your ad in a sealed envelope at the Lyminge Library.

Business adverts cost £9.50 per month or £95.00 per year. **Personal and charity adverts and articles** from £3 per month, or £30.00 per year. The annual rate offers 12 entries for the price of 10. Please make cheques payable to '**The Lyminge Association**'. If you do not have email, a typed paper-copy may be left with the payment at the Library. Lyminge Association accepts no liability for the accuracy of the advertisements or subsequent actions arising in conjunction with advertisers in the newsletter.

Further details from Peter Barnes (editor) on 01303 863737

FHODS
**THE TOWER THEATRE
FOLKESTONE**

A
SPECTACULAR
ADVENTURE

FOR ADULTS
& CHILDREN
ALIKE!

**AROUND
THE WORLD
IN
80 DAYS**

Jules Verne adapted by Laura Eason
An amateur production by arrangement with NICK HERN BOOKS Ltd
Suitable for children over 7 years

May 8th to May 12th
Box Office 01303 223925
towertheatrefolkestone.co.uk

Registered Charity 1180504




BRIGHT + BEAUTIFUL BALLOONS
Balloons
For All Occasions

Local Lyminge-based balloon decorator

Can supply a single foil balloon or
a selection of helium-filled balloon
bouquets to be displayed on a table,
floor or walls.

Can also provide balloon modelling
for all children's parties and events

Contact Mel: 07958 737 977
or
01303 863 460
E mail: info@thechairdresser.com
www.brightandbeautifulballoons.com

Collection or local delivery available
'convenient, hassle free & cost effective'
NO JOB TOO SMALL!!

GARDEN SAFARI 2019 - 22nd and 23rd JUNE

With Spring well and truly sprung, it's not easy to resist the invitation your garden is giving, so get out there; the other chores can wait. As part of the **Lyminge Festival** the **GARDEN SAFARI** is one of the highlights and attracts many visitors to our wonderful village, so why not be part of it and open your garden.

If you are unsure of the suitability of your small or rambling plot, give me a call and we can talk through your concerns. Could the gardeners who have previously opened, contact me to confirm their inclusion this year, and any new ones are more than welcome.

Contact: **Ray Smith 01303 863856**, Email rsalver@gmail.com

Fran Davis 01303 862598



LYMINGE FOOD AND WINE

Purbeck House, Canterbury Road, Lyminge CT18 8HS

01303 862225

We are here to serve you

Monday – Sunday 7am to 9pm including Bank Holidays

The hours that the Post Office is currently open (while training) are:

Monday - Friday 9am-5.30pm and Saturday 9am to 12.30pm



- Customers of main UK banks can access accounts at new branch
- Services include bill payment, cash withdrawals and foreign currency
- Also includes postage, home shopping collections and returns



I would like to take the opportunity to introduce myself properly, I am Hayley Ross and will be taking over the reins as services manager when Ben moves on to his new role with the Police at the end of March. We wish him well and thank him for his work over the last year with us.

I have worked for Age UK Hythe and Lyminge for the last year as marketing and fundraising officer and I am very much looking forward to the new challenge. In the coming months my focus will be on providing a people-centred service; so if you have thoughts on the centres or services you may like I would be very keen to hear them. I hope you will help form part of what happens next for both the centres and our external services. If you have time, I'm here for a chat!

Exciting times are ahead as we develop our vibrant and social hubs within our communities.

We will be starting a **clay modelling class** at our Lyminge centre on 1st April from 10am-12noon. No experience needed, but space is limited so please book ahead.

Volunteers are being sought to support our service. If you can help maintain our outside space with a touch of gardening, help keep our vehicles clean, or offer support with client transport then please do get in touch.

We are looking to encourage people to join our already popular **'In Betweeners'** group. This group has those of active retirement age in mind and will provide a variety of social meets throughout the year. There will be discounted day trips e.g. trip to the Leeds Castle Classical Concert on 13th July, with a pick up just outside the Lyminge centre. Coach travel and show ticket is £39 for members or £50 for non-members. The launch event for the Lyminge centre **'In Betweeners'** group will be on 23rd April starting at 5.30pm, with a curry night (£5 per head) and the chance to hear more about the scheme. Booking in advance essential.

Please do get in touch on 01303 269602 or email on sm@ageukhl.org.uk I look forward to hearing from you!

SPRING QUIZ - 13TH APRIL - BOOK IN ADVANCE 01303 862928

Lyminge Friends - April 2019

Our March talk was from Derek Smith who gave a very interesting talk on *British Folklore and Legends* and then we went for lunch in Brockhill Country Park Café. On 20th March, we met for a visit to the Elham Valley Vineyard, where we looked around the Garden Centre and enjoyed a lovely tea.

On 3rd April, we will have a show and tell from Linda Wilsher with her talk entitled *My life in Quilting* and on Easter Monday, 22nd April, we will meet for lunch in the Coach & Horses - prebooking essential.

On 1st May, our speaker will be Ian Porter talking on *Famous Murders 1811-1911* and on 15th May we are off to Dover where we will sample afternoon tea and visit Samphire Hoe.



Meetings are 10.30am - 12.30pm in the **Rigden Room** of the **Tayne Centre**. Entry for 2019 is £3.00 which includes light refreshments. We are a friendly social group & welcome new members so just drop into one of our meetings, or, if you'd like to talk to one of us first, please call 863500.



BADGERS BRIDGE NURSERY

" Bridging the indoor and outdoor learning environment for children in their Early Years"

Badgers Bridge is set in the idyllic countryside of Postling, just outside Lyminge. We are a small and friendly Preschool who blend the Montessori principles with the outdoor learning ethos.



We were awarded Outstanding by Ofsted in 2018 in every area. This is a real achievement and we are really proud of the staff who work tirelessly to provide a stimulating and caring environment for the children of Badgers Bridge.

The inspector was particularly impressed with our Forest School. *"Children enjoy limitless opportunities to explore, investigate and work together in the natural woodland environment. Staff skilfully inspire children to develop a significant understanding of the world in which they live".*

".....exemplary relationships between staff provide excellent role models for children and promote high standards of behaviour. Children make outstanding progress during their time at the nursery".

We are filling up fast and only have 3 spaces available. So please call or email us:

Email : badgersbridge@gmail.co.uk

Website : www.badgersbridge.co.uk

Tel : 01303 862951

Postling Village Hall, The Street, Postling CT21 4EU

Ofsted Registered : 395128

Companies House Reg : OC375571

TABLE FAIR

RHODES MINNIS VILLAGE HALL

SATURDAY

4TH MAY 2019

10AM-1PM

(STALL HOLDERS FROM 9AM)

BOOK A TABLE AT £5

CONTACT DOUG 01303 863660

OR ELAINE 01303 863096

FREE ENTRY - TOMBOLA AND REFRESHMENTS

HOPE TO SEE YOU THERE

Rhodes Minnis Village Hall



FLOWER SHOW

at Rhodes Minnis Village Hall

Saturday 13th April

Doors open at 2.30pm

Refreshment and Raffle

Entries for Spring Show accepted on the day
between 9am - 10.30am

Schedule available from Lyminge Library
or on-line at rmvh.org.uk



Lyminge Historical Society

COME AND JOIN US!!

The next meeting for April and May are listed below:

Tuesday 2nd April at 7.30pm in the Tayne Centre

'Kent and East Sussex Railway: Tenterden and Bodiam'

Speaker: Derek Smith

Tuesday 7th May at 7.30pm in the Tayne Centre

'Battersea Fun Fair:

The Playful Side of the Festival of Britain'

Speaker: Bob Preedy

New members and visitors are welcome.

Members: £11 per annum inclusive of talks. Visitors: £4 per person payable on the door.

Tea and biscuits will be served

Please note:

Following the publication of Lyminge a history part 10, this can be purchased through the Premier Food Store at £7.00. Plus: purchase Parts 1-5 as a bundle for £22 or Parts 1-9 for £44*

To take advantage of the offer please call Daphne Andrews on 01303 862865

This bundle offer is not available from the shop. *Postage and packaging extra

Lyminge Historical Society contacts:

email: lymingehistoricalsociety@gmail.com Website: www.lymingehistoricalsociety.co.uk

Facebook: www.facebook.com/Lymingehistoricalsociety



Meditation & Mindfulness Workshop

With mindful movements, meditations and mindfulness practices, this workshop will leave you feeling at peace and relaxed.

You will learn techniques to focus your mind and still your thoughts, both very useful skills in our busy lives!

Suitable for all abilities, you don't need any meditation or yoga experience to enjoy this workshop and discover the benefits of meditation.

Mats available on request. £25/person. Tea, coffee and cake included!

On **18th May 2019, 9.00-12.00** at the **Rhodes Minnis Village Hall**, Chapel Lane, Rhodes Minnis, CT4 6XR

GARAGE SAFARI - 13TH APRIL - BOOK IN ADVANCE 01303 863537



Exciting news!

Lyminge Dramatic Society is proud to be the first event of the **Lyminge Festival!** On 14th and 15th June we present **Summer Holiday** written and directed by Ingrid Goodchild. This will be an entertaining event celebrating the seaside. Join us for this fun filled frolic featuring reminiscences, songs and readings guaranteed to make you remember childhood seaside holidays complete with sandcastles, shells and sunshine! It will be performed at Lyminge Village Hall at 7.30pm and tickets will be available from Laing Bennett in Lyminge. The auditions for this will be on 30th April at the Rigden Room in the Tayne Centre, Lyminge at 7.30pm. If you would like to take part and would like to see the audition pieces beforehand contact Sue on 01303 862837; alternatively just turn up on the 30th. The auditions are open to non- members but if selected we ask that you join the Society so we are covered by our insurance.

From 13th to the 16th November Lyminge Dramatic Society will be presenting the classic comedy, **The Pink Panther Strikes Again**. Directed by Trevor Gasson, the play features the iconic walking disaster Inspector Closeau. The production will have one of the largest casts ever assembled on the Lyminge stage so if you have ever fancied joining us, either to act or to work backstage, now is a great time to get in touch. We will be particularly looking for teenagers to play - what else? Pink Panthers! If you fancy being part of this production please contact Trevor on tgasson@hotmail.co.uk or 01303 840395 and we will keep you informed.

Editor: pb@pbarnes20.plus.com

Lyminge Dramatic Society

Rhodes Minnis Village Hall

BEETLE DRIVE



on
Friday 26th April
7.30pm

Teas/coffee and juice provided

There are prizes & a raffle

Adults £2 – Children 50p

Come and enjoy a fun evening.

Newcomers very welcome.



SHARPENING

**Knives, Gardening Shears,
Secateurs, Edge Clippers,
Mower Rotor Blades**

Free collection and delivery locally.

Please call 01303 863743,

07961019616 or

email: esposito321@btinternet.com

Prices from £3. Please ring for prices.



Spiritual Gifts

Emma Hazelwood

07885 986223

emma@whitelightz.co.uk

www.whitelights.co.uk



The Gatekeeper

Free house

Etchinghull



- NEW SPRING MENU LAUNCHED -

Come and enjoy some time with us in this wonderful building dating back to 1595. We serve lunch and dinner in our well appointed restaurant and have a charming well stocked bar with local real ales always on tap.

We also cater for private functions so please just call in, phone or email and we will be happy to quote for you.

Tel: 01303 864345 - Email: info@gatekeeperinn.co.uk

Physiotherapy in your home



We are a specialist community Physiotherapy service providing rehabilitation in your home or care home. We cover areas from Canterbury to Folkestone.

We can help you:

- Recover mobility and confidence after a fall
- Recover mobility following illness, injury or a stay in hospital
- Improve your balance

Our neuro-physiotherapists can help with rehabilitation for a variety of neurological conditions including:

- Stroke
- Multiple Sclerosis
- Parkinson's Disease

All our highly experienced physiotherapists are:

- Fully insured
- DBS checked
- HCPC registered

Please visit our website to see more about our team and our services. www.jlinks.co.uk

Or call **Jayne Steadman** on **07903 866590** to chat about how we could help you.



at The George Inn

on Stone Street CT4 6DF

Every Thursday night from 8.15pm

and **LIVE MUSIC** from 8pm

First Sunday each month: Local folk musicians playing & singing traditional songs

Third Wednesday each month: Acoustic music

Come early and enjoy traditional home cooked English food, ales and wines. Please book in advance to avoid disappointment.

Phone Michael: 01227 709170 **E-mail:** landlord@thegeorgeonstonestreet.co.uk

Web-site: www.thegeorgeonstonestreet.co.uk

Find us on Facebook: The George Inn on Stone Street



A FAMILY FUN FIESTA!

A family fun fest comes to Elham village hall!

Friday 17th May 5 - 8.30pm

All are welcome to a family event- something for all the generations to enjoy. Lots of games, activities, quizzes, music and an opportunity to socialise with friends and family. How long since you took part in a beetle drive, musical hats, penny in the pot, or team charades? This is a chance to share such delights with children and grandchildren and other team activities. Prizes to be won and a raffle!

All that is needed is a sense of humour, a willingness to join in and to encourage others to have a good time!

Sausage and chips are included in the tickets price and there will be a bar and soft drinks available.

Tickets £5.00 for the adults, or a family ticket (two adults and two children) just £15.00 available from Jan Stanyon 01303 840820 or stanyonjan@aol.com

CREATIVE WORKSHOPS IN KENT

...come and open the window to your creativity!

When: Tuesday 16th & Wednesday 17th April

Time: 9.30am to 4.30pm

What: 16th April - 'Drawing from the Right Side of the Brain' ..make a mental shift through simple exercises and draw!

17th April - 'Colour in Interiors'..explore the action of colour by making a mood board of a fantasy room or one in your home.

Where: Village Hall, Etchinghill, Kent, CT18 8NQ

Included: Coffee, tea & cake. All materials except as listed below

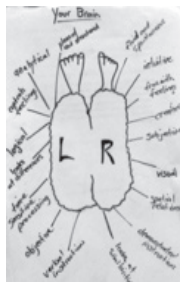
Bring: Lunch, an apron, note book, pens & pencils, etc.

For 'Colour in Interiors' mood

board, bring favourite paint swatches, curtain/cushion material samples you like.

Cost: £65 per day – As this is the first of these workshops in Kent we are offering **15% discount** for these dates.

Contact Tutor: For more information and booking contact Christine via email: eagle2.chall@gmail.com



Find The Easter Rabbits

Masterminded by the **1st Lyminge Guides & Rangers**, this provides an opportunity to find some brightly painted plaster-cast rabbits, hidden throughout the area. 'Home created' maps will be provided and the idea will be to identify the locations of as many rabbits as possible.

Further information will be available in the coming month.

WATCH THIS SPACE!!



Rhodes Minnis Circle

We welcomed Eileen Jenkins to our meeting in February. She gave us a lively, interesting and amusing talk about her journey along the Saxon Shore Way from Gravesend to Hastings. Eileen had some friends to accompany her and they passed many local places of interest (and pubs as well!)

The competition was won by Paula Peers with Pearl Furminger 2nd, Eileen Greenwood 3rd and Connie Burren 4th. On the 24th April Alan Jones will be promoting mobility and wheel-chair use. We meet at Rhodes Minnis Village Hall at 2.30pm and visitors will be made very welcome (1st visit free!)

For further details please contact 862913.

Editor: pb@pbarnes20.plus.com

Railway Museum



Countryside & Craft Centre

The gates of the Museum and Craft Centre open on **6th April** for the season. The next events are :- **Easter Bunny Hunt from 19th - 22nd April**, followed by **Miniature Steam Weekend 27th - 28th April**.

For other events planned see - www.elhamvalleylinetrust.org, www.facebook.com/ElhamValleyLineTrust. Official or Tel: 01303273014 Regular items will be displayed in the Barn and on web and Facebook.

In Aid of Lord Whisky Sanctuary Fund

Registered Charity: 283483

Park House, Stelling Minnis, Kent CT4 6AN

Tel: 01303 862622 Fax: 01303 863007

Website: www.lordwhisky.co.uk ~ Email: lord.whisky@btinternet.com

Boot & Spring Fayre

Saturday 4th May at Park House

Boots from 8am (cars £7 / vans £10) - Entertainment from 11am

East Kent Piping Society ~ Sheep Shearing

'Tweetharts', in association with Applause Outdoors

Lil' Jockeys Ride-on-Horses, Face Painting, Hot & Cold Refreshments

Tombola & much more! Classic Cars & Motorbikes welcome

10th Anniversary Cyclo-Sportive

Bank Holiday Monday 27th May

Start between 9am-10am from Park House Animal Sanctuary

Fully signed 50 or 72 mile route. Open to riders of all abilities. E-bikes welcome

Barbecue, tea, coffee & cake available all day

For further details, visit our website, Facebook page or email

nickracingsnake@btinternet.com

LYMINGE GARDENERS' SOCIETY

SHOW TIME!

SPRING SHOW – SATURDAY 6th April

Tayne Centre, 2pm – 4pm

Staging 08:30-10:30

Show Schedules are available in 'Snippers and Clippers' and the Library

Further details from John and Sara Packer on 01303 862816



Gardeners' Question Time

TUESDAY 16TH APRIL

with

Derek and Steve from Farthing Common Plant Centre

(Coffee/Tea, Cake and 'Chat' from 7:15pm)

(Members: £3 Non-Members £5)

Ikarus Inc
Dreamville, Indiana, 1955

'Hilarious, romantic, tender, searching – and laced with rock'n'roll!'

Tayne Field, Lyminge
Sunday 28th July
7.30pm – Picnics from 6.00pm

The Rude Mechanical Theatre 2019 outdoor Tour

TICKETS £17 + concessions - 01323-501260,
online, Laing Bennett & Mike Chisnall 01303-862743

Bring low backed chairs, picnics & warm clothing
www.therudemechanicaltheatre.co.uk

The Rudes Are Back In Lyminge

Put Sunday 28th July in your diary to see the Rude Mechanical Theatre who will be on Tayne Field again for their annual outdoor theatre. They will be performing a revival of their inspiring **'Ikarus Inc'**, a play about hopes and dreams. You won't want to miss it!

Set in the little town of Dreamville, Indiana, in the '50's, a travelling salesman, Daedalus H. Gildersleeves, and his son Ikarus, sell dreams from a suitcase. Secret hopes are laid bare as they begin to fly the townsfolk up into the clear blue skies to their dreams. Hilarious, romantic, tender, searching – and laced with rock'n'roll! Meanwhile the ladies of the local Buffalos Club – the Buffalesses – enter a competition to make the biggest pumpkin pie ever to raise money for 'the sufferin' poor'. For Ol' Mercy Coffin it is just the devil tempting them. But will they fly and achieve their dreams or come crashing down to the cold hard earth? Will the pumpkin pie get baked? Will they win the competition?

Tickets are £17 + concessions - available from: Mike Chisnall 01303 862743, online www.therudemechanicaltheatre.co.uk or Laing Bennett. *Bring a picnic, your own chair and warm clothing for an English summer*
The show starts at 7.30pm with picnics from 6.00pm.

Disposing Of Your Waste – A County Council View

Whilst it's the District Council that collects your waste, it's the County Council that's responsible for its disposal. We encourage the 12 districts in Kent to collect waste in a way that will increase recycling and many years ago we funded the move from the black plastic bags to the multiple bins we have today. It may be extra work for householders but kerbside recycling collections have undoubtedly led to a big increase in recycling.

Kent County Council also provides 18 Household Waste Recycling Centres across Kent with the nearest to Lyminge being Ross Way, Shorncliffe, Folkestone, CT20 3UJ. It's open Monday to Saturday 8am to 4 30pm and 9am to 4pm on Sundays and Bank Holidays. There's more information on www.kent.gov.uk (search for 'Shorncliffe') or ring 03000 41 73 73. The staff are very helpful and the service is generally highly rated.

If you choose to dispose of waste using a private business then you need to take 'reasonable steps' to ensure this business is authorised to carry waste. You can check this via the Environment Agency who keep a list of all registered businesses. It's good practice to record information about the company you use and ask for a receipt for your waste. Remember that you could face a fine if your waste is moved by an unauthorised person and it is highly likely to end up dumped in one of our country lanes.

There are many reputable local companies that will provide skips of all sizes and you can apply for a permit from KCC if you need to keep a skip on the public road. Any tradespeople doing work at your house are responsible for the waste they produce and once again its helpful to have a proper receipt should any fly-tipped waste be traced back to you.

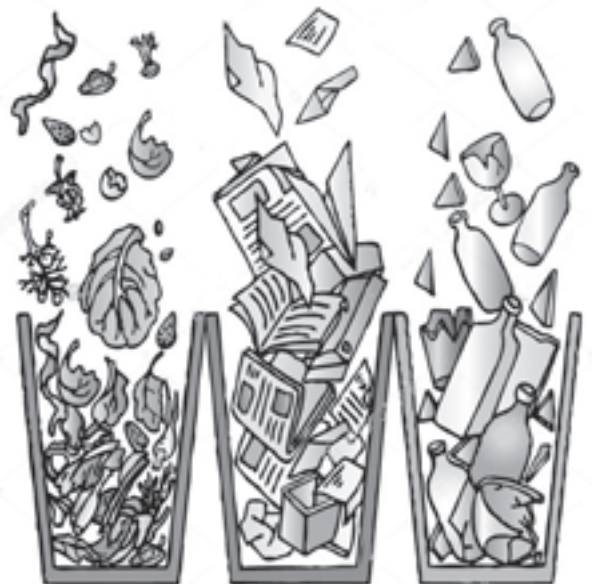
Less than 1% of the household waste that KCC disposes of goes to landfill. 49% is recycled and the rest is incinerated to create energy with the ash being used in road building. This was the best performance of any council in the country in 2017/18 (most recent figures).

One of my special responsibilities at Kent County Council is signing off the responses the council makes to the Freedom of Information requests we receive. (There's a log of all the questions and answers on the KCC website if you are curious). One that recently caught my eye was a request about whether certain items could be put out for recycling and it looked worth sharing.

What can or can't be put out for recycling?

| | |
|---|-----|
| 1. Plastic shopping bag | No |
| 2. Glass bottle of wine | Yes |
| 3. Polystyrene disc from pizza packaging | No |
| 4. Drinks can made from aluminium | Yes |
| 5. Tin of beans made from steel | Yes |
| 6. Foil tray from a ready meal | Yes |
| 7. Plastic film food lid, i.e. from fruit punnet | No |
| 8. Plastic tub, i.e. from fruit punnet | Yes |
| 9. Plastic prepared salad bag | No |
| 10. Plastic bag for loose fruit or vegetables | No |
| 11. Plastic water bottle | Yes |
| 12. Plastic ring joiner from multipack of water or cans | No |
| 13. Plastic food pouch i.e. for baby food or pet food | No |

**Susan Carey, Member for Elham Valley,
Kent County Council**





Pathways to the Past

Exploring the Legacy of Ethelburga

By the time you read this, we will know whether or not the National Lottery Heritage Fund has awarded our project a grant. In any event, we are pleased to report that we have received a number of grants and donations over the past year so we will be able to undertake some activities, even if we can't do everything that we planned when we began this project.

It is now almost a year since our last public meeting and we now want to let everyone know what we have achieved so far, discuss our ideas for what is possible, and hear your ideas for how the project should go forward.

The next public meeting will be in the Parish Church at 3.00pm on Sunday 12 May 2019. Everyone is welcome. We want to hear what you think.

If you can't make the meeting on 12 May, there will also be opportunities to hear a report about the project at the Annual Parochial Church Meeting on Tuesday 2 April, also in the church, and at the Annual Parish Meeting on 21 May at 7.30pm in the Tayne Centre .

To keep up to date with the project in real time, follow us on our blog at <https://geopaethas.com>. If you have any questions about the project, please contact Liz Coleman, Administrator, at Lyminge.Liz@live.co.uk or 863197 or Rob Baldwin, Project Manager, at rob.baldwin50@hotmail.co.uk.

Baby Sitting Service Offered

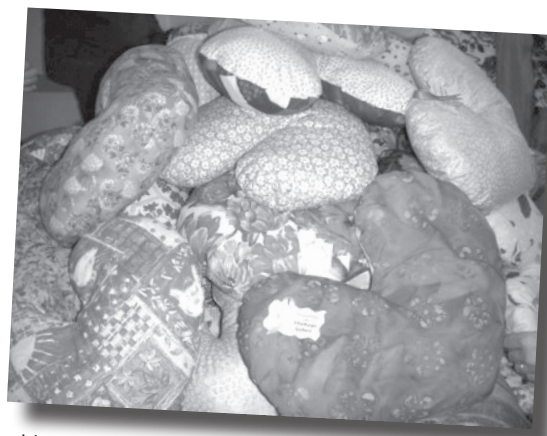
Experienced student baby-sitter with own car. Available for most evenings and some daytime slots.

£8 hour, minimum 3 hours. Tel D'Arcy 07540275655

Who's Who in our Neighbourhood - Ethelburga Quilters



Our previous charity day – making fiddle quilts for dementia sufferers



Heart-shaped cushions which are given out at the hospital if you have just had surgery for breast cancer. Tucked under the arm, they protect the wound.

Ethelburga Quilters is one of a number of quilt groups in Kent, the difference being that this is a taught group. Workshops are held once a month, usually (but not always!) on the second Saturday of the month at Etchinghill Village Hall. The workshop, led by Liz Coleman, starts at 10am and finishes at 4pm. Members bring a packed lunch but hot drinks and biscuits (and often cake!) are provided. Participants need a sewing machine, quilters cutting board, rule and rotary cutter and a basic sewing kit, but items can be lent to the new quilter.

We have an exciting and varied programme for 2019, starting with our charity day on 12 January, when we made Heart Cushions for people who have had surgery as part of breast cancer treatment. Even if you are not a quilter, you are welcome to join us for the day to help stuff and stitch these useful cushions.

In February a small pictorial wall hanging was made depicting Indian ladies after a shopping trip to the market. In March a mystery quilt was started. You will not know what it looks like until it is completed! Simple cutting and sewing – easy for a beginner. The mystery continues through to May when it should be resolved! In June an interesting bag pattern will be stitched – just in time for the holiday season. The rest of the year includes quilting in colour, a fresh take on 'Hidden Wells' and a Christmas tree wall hanging.

If this has whetted your interest, please contact **Liz Coleman** on 863197 or email lyminge.liz@live.co.uk

Etchinghill Update April 2019

ETCHINGHILL VILLAGE HALL - John White - 01303 863819

OPEN HOUSE: Every Monday 10am – 12noon. Refreshments available. Company and recreational activities available. Come and join in the weekly quiz, crossword etc.

A presentation by **Mr Adrian Tofts** of **FOLKESTONE – HYTHE DISTRICT COUNCIL PLANNING DEPT.** - 29th April – 10.30 am. He will present the District Council's point of view on the future planning for our district, together with the development of the Local Plan and what is being done to provide housing for the elderly in our area. Do come along and put your point of view or just listen to how plans, in the making, may affect your future way of life.

ETCHINGHILL RESIDENTS' ASSOCIATION – Lorna Molton – 01303 863665

ERA VILLAGE HALL FILM NIGHT: Monday, 15th April The ERA will be screening **"FIRST MAN"** PG – 13 .Biography/Drama/History. Starring Ryan Gosling; Claire Foy; and Jason Clarke. The riveting story of NASA's mission to land a man on the moon, focusing on Neil Armstrong from 1961 to 1969. The film explores the sacrifices and the cost, to Armstrong and to the nation, of one of the most dangerous missions in history. Doors open at 7pm for 7.30pm. The entrance fee of £5.00 includes admission, refreshments and a lucky draw ticket. New and existing members are welcome. For information please visit www.etchinghill.info.

PARISH NEWS – Christine Barnett NEWS – Christine Barnett lymingepc@btinternet.com The Parish Council's contractor will be removing the slide from the Cricket Ground as it is unsafe to use. There are no plans to reinstate it at present.

NEIGHBOURHOOD WATCH - family.parris13@btinternet.com

Trading Standards are aware of a scam concerning **Fake TV Licensing e-mails**. TV Licensing will never email you, unprompted, to ask for bank/personal details or tell you about a refund. Also your bank will never ask for your PIN, password, or to transfer money out of your account. Do contact TV Licensing if you have been approached in recent weeks by someone you are unsure of before passing on any information. Stay safe.

If you have an item of local interest you would like included in the Update please contact Barbara on 862873 or barbara.newing@hotmail.co.uk

"When obstacles arise, you change your direction to reach your goal; you do not change your decision to get there."

— Zig Ziglar

CANTORES

— Your local choir

**DATES FOR YOUR DIARY
2019.**

**40th Anniversary Prom Concert
Saturday 13 July**

Lyminge Village Hall. More details later.

www.cantoresdominicae.co.uk Charity no. 1087409

Lyminge Hand Bells

The Lyminge hand bell ringers have been playing in and around Lyminge for well over 25 years. We love to attend fetes and local private celebrations throughout the year so if you think the sound of hand bells would suit a special occasion you are planning, then please contact us. We have an increasingly wide selection of music to choose from or just leave it to us.



All we require at the venue is a large table for our bells and music, room for up to 11 players and a minimum donation of £50 for our current charity, the Nepali Children's' Trust. A small contribution to travelling costs is also appreciated if we have to travel more than 5 miles from Lyminge. Please provide plenty of advance notice. Want more info or make a booking?

Please contact:

Ro Edmond on **863201**
or email welldorm@aol.com



ROYAL BRITISH LEGION

Elham Valley Branch

FREE COFFEE MORNING

Saturday 13 April 1030 - 1230

at St Mary's Church Hall, Elham

Raffle and retiring collection in aid of branch funds

Come and find out what the RBL is all about

Abbot's
fireside

VISIT TO INDIA

.....and much more too



We are pleased to announce the launch of our senior citizens lunch - £6 for a main course or £10 for a main, dessert and tea or coffee. So come and sample delicious fayre in splendid tudor surrounds. Offer available 12 until 2:30 every day. Also, don't forget, we now serve coffee/tea and homemade cake for £5 or cream teas for £6.

Keep the 26th and 27th April free in your diary for we will be transforming ourselves into an authentic Indian restaurant complete with Indian decor, staff costume, music and, of course, amazing Asian cuisine brought to you by our head chef, Abishek Hariharan. Book now - bound to be very popular.

Tel: 01303 840566 - email: info@abbotsfireside.com
The Abbot's Fireside, High St., Elham, CT4 6TD

Friendship Lunches

During Lent – you are warmly
invited to join us in

The Tayne Centre

12noon

Fridays

5th & 12th April

Soup and roll, cheese, fruit,
hot drink - £4.00

Everybody welcome

Organised by

Christians in Lyminge

In support of



Thinking of Getting Married in 2019/2020



Venue for the solemnisation of
Civil Marriages & formation of Civil
Partnerships

In the beautiful grounds
of Elham Village Hall
or inside if preferred

Inquiries Tel: 07746 790618

The Lyminge Play Park Project: An Update

Following our final submission of plans to the Parish Council addressing all outstanding issues we are very excited to have been given their approval.

The team is now finalising the application documents and this can then be submitted by the Parish Council.

This is a huge step forward for the team, and of course for the community itself, so we'd like to take this opportunity to thank everyone who has shown their support so far. We have a big job ahead to raise the funds needed to build the park Lyminge deserves, but we are now one step closer to being able to make it happen.

If you think you could help with funding, please do contact the team at lymingeyouthaction@gmail.com.



**Your local tradesman, working in the
business for over 30 years.**

**Internal doors Stairs Decking
Kitchen fitting Hard landscaping
Complete refurb**



Log sheds and planters available to view at
Bridge Farm (behind new doctors surgery)

Shaun Baldock —
07828751063 or
shaun@cjworks.co.uk



Tayne Centre MARKET



Church Road, Lyminge
SATURDAY 20th April
9am - 12 noon

Crafts, Cakes, Pies, Veg, Gifts, Cards, etc

*This month's monies will be donated to Maya from
Etchinghill March monies went to the Allotment
Association for new water butts following vandalism*

Tables £5 or £8 tel 01303 862710

ETCHINGHILL RESIDENTS' ASSOCIATION

Film Night

"First Man" 13

Monday 15th April 2019

Etchinghill Village Hall, 7pm for 7.30pm

Entrance Fee £5 per head

Open to new and existing members

FREE Refreshments and Raffle



www.etchinghill.info

?? QUIZ NIGHT??

(Pit your wits against Folkestone's Finest)

Friday 26th April

7pm for 7.30pm

**Woodward Hall, The Bayle,
Folkestone**

Prizes for winners and runners up.

Bring your friends for table of 6 - BYOB

Tickets £5 per person

available from

Pam@friendsofstmaryandsteanswythe.org.uk
or Pam at 01303 244876

*(Act now and book; don't forget to name your
team or table)*

All proceeds to: Friends of St Mary and St Eanswythe

Lyminge Lawn Bowls Club

Forthcoming Fixtures



Fixtures for April

The Green opens on Saturday 20th April

Sun 21 April - 1st Match friendly match at home

Captains v Presidents

Sun 28 April - Cheriton

Fixtures for May

Playing at home unless stated away

Matches start at 2.30pm unless stated otherwise.

Sat 04 May - Webb Trophy

Sun 05 May - River

Mon 06 May - away to Boughton

Sat 11 May - Wright Shield Triples comp

Sun 12 May - Birchington

Thurs 16 May - St Chads touring team

Sat 18 May - away to Gateway

Sun 19 May - Ashford Rail

Thurs 23 May - Sellindge

Sat 25 May - Whitstable

Sun 26 May - GW Staney (touring team)

Mon 27 May - **OUR OPEN DAY**



Lyminge Pre-School

Ofsted
Outstanding
Provider

Lyminge Preschool provides quality Early Years education and day care all year round for children aged 2-5 years. The Pre-School is run by a team of qualified, highly experienced and dedicated practitioners.

Lyminge Pre-school has a safe, stimulating and fun environment that provides support and challenge for all of the children's individual needs. We welcome all children from the age of two from all surrounding areas.

To arrange to meet the team, please call 01303 863149 (day) or email lymingepreschool@gmail.com and visit our website www.lymingepreschool.org.uk

Lyminge Baby and Toddler Group

We'd love you to bring your little ones along to our informal and friendly group for lots of fun. Come along and join us for craft, singing and lots more. We meet every Tuesday morning at the Tayne Centre 10.00-12.00, term time only. Cost: £2 per session, including refreshments for all.

Call: **Sarah 0798 4939220.**

E-mail: lymingetoddlergroup@yahoo.co.uk

Etchinghill Baby & Toddler Group

We are a friendly toddler group, which caters for babies and children from 0 to school age. Crafts, messy play, trikes, toys and a singing session are included each week. In dry weather there is also outside access for the children to play. We meet on Wednesdays between 10am-12noon at Etchinghill Village Hall. We charge £2 per family, 1st session is free. Tea/coffee and healthy snacks are provided.

If you have any queries please contact **Cait Byrne - 07850757571**

Rhodes Minnis Toddler Group

-needs new members

We need new members and so if you are looking for something to do with your 0-4 years old we would be pleased to see you between 10am - 12noon on Thursday mornings (term time) at Rhodes Minnis Village Hall.

Cost to include refreshments £2 per morning

For more information phone **Elaine on 01303 863096**

MUSIC ON A FRIDAY

invites you to

A SPRING CONCERT
Lyminge Parish Church
10th MAY 2019
7.30 pm

all styles of music for you to enjoy

§ § § § § § § §

Date for your diary - 23rd August for our
BBQ and a chance to listen to
MEMORY LANE

Editor: pb@pbarnes20.plus.com



Snippers and Clippers Barbers - Lyminge

| | |
|-----------|---|
| Monday | Closed |
| Tuesday | 9am - 5.30pm |
| Wednesday | 9am - 5pm |
| Thursday | 9am - 5.30pm <small>(will stay later)</small> |
| Friday | 9am - 5.30pm <small>(will stay later)</small> |
| Saturday | 8am - 3pm <small>(will stay later)</small> |

Free parking opposite ❖ WiFi ❖ Loyalty scheme

No booking - walk-ins only

Rich - 07522494969

Follow us on  **facebook** for offers



PIANO LESSONS FOR ADULTS

Have you always wanted to learn to play the piano but have lacked the opportunity, or faith in your own ability? Did you learn as a child and now regret having given it up?

I specialise in teaching adults and have developed a method which will enable you to progress quickly and with great enjoyment.

Please contact: Lise Cribbin, Bridge 01227 637709



Lyminge
Midsummer
Festival

**14th - 23rd
June**

Now in its third year (occurs every other year), the **Lyminge Festival** is taking on a momentum not seen before. People and organisations are offering events to join and '..to be part of it'.

It provides our diverse community a chance to show exactly what it is that makes us tick. It also gives us the opportunity to bond as one under the umbrella of the **Lyminge Festival**.

There will a wide range of events and opportunities such as concerts, fair, teas, flower festival, garden safari, picnics, bands, barn dance, art exhibition, special stage production, beer festival.....you name it and there'll be a good chance it will be there and all themed around **"Summer Holiday"**

So if you or your organisation would like to be part of the events programme or have any novel ideas that would help bring the community together, then please contact

Penny: penny@tritontek.com - 01303 862917

Tel: 01303 863737

Coach & Horses



Senior Citizens 2 course lunches -

Available Tuesday - Saturday £7.50

Sunday Carvery - Every Sunday between 12-4pm
(booking essential)

Steak Nights - Friday 12th and 26th April

Quiz Night: Wednesday 24th April from 7.30pm

Live Music Saturday 20th April

Who's Brian? From 8.30pm

Bookings and Contact: 01303 862694

For more information please check out our Facebook page and search 'Coach & Horses'

Pub Opening Times:

Bar: Mon - Thurs 12pm-11pm, Fri - Sat 12pm-12am, Sun 12pm-10.30pm

Kitchen: Mon - Closed Tues - Sat 12-2pm & 6-9pm. Sun 12-4pm



Bennett & Friends
... CATERING & EVENTS ...

Catering for large and small private and corporate events

Weddings & parties

Christenings & celebrations

Funeral wakes

Afternoon teas & garden parties

Drinks & canapé receptions

Buffet lunches delivered

Working lunches & business meetings catered

sam@bennettandfriends.co.uk : www.bennettandfriends.co.uk

07963352406

Lyminge Judo Club

(British Judo Club Registered)

We are a small friendly village club. We welcome and encourage both novices and skilled players and train every Monday evening at Lyminge Village Hall from 6.30pm. Open to all ages from 6 upwards - no upper age limit.

Juniors £2.50 per week; Seniors £3.50 per week. First session free, with no obligation.

Contact: Selwyn Nichols 01303 862946

selwyn_nichols@hotmail.com



Yoga

Rhodes Minnis Village Hall

Friendly and convivial yoga classes suitable for all abilities. The classes include flowing sequences, postures, breathing exercises and end with a relaxation. Mats available on request.

Mondays 7.30-9.00pm, during school terms

Rhodes Minnis Village Hall

Costs are £10 pay-as-you-go or £45 for a term of 6 consecutive classes.

For any information or to book, please contact:

Anne-Michele Patart on 07977503897 or

e-mail: mpatart@gmail.com

Website: treelightyoga.wordpress.com



ZUMBA



@ Tayne Centre, Lyminge

with **KAYLEIGH HALL**

• Every Friday 6PM-7PM

• £5 Per session

☎ 07898300504

✉ kayleigh.hall90@gmail.com

facebook.com/kaysdanceformations

Starting Friday 3rd May 2019...

BOOK NOW!



SWIM SCHOOL

We have space available for Lengths/Improvers for Expanded Learn to Swim Scheme (Swim England LTS Level 4+)

Due to the expansion of our successful (nationally accredited) Swimschool at Hythe Aqua we currently have immediate vacancies for lengths and intermediate level swimmers

Club Secretary: 01303 862353

family.parris13@btinternet.com www.hytheaqua.org.uk

"I follow three rules: Do the right thing, do the best you can, and always show people you care."

— Lou Holtz

The
**Coffee
Cabin**



The
**Coffee
Cabin**

**FINE COFFEES, SPECIALITY TEAS,
BREAKFASTS, SNACKS, LIGHT LUNCHES,
SANDWICHES, HOME BAKES
OPEN WEDNESDAY - SUNDAY**

Canterbury Road, Lyminge CT18 8HU

01303 864222

lymingecoffeecabin@hotmail.com



Now In Your Area

Shutters by Sophisticated Living
Unbeatable on quality and price!
Call us for a no obligation quotation.

- Hardwood • Direct from the manufacturer • Made to measure
- All shapes & sizes for all windows • Wide range of styles
- 40+ colours & finishes • Installed by qualified craftsmen

Call: 01303 779595

Email: shutters@sophisticatedliving.co.uk

Shutters by
SOPHISTICATED LIVING



Rhodes Minnis Cat Sanctuary

REHOMING & BOARDING CENTRE

- Our Sanctuary takes in and rehomes 250 unwanted cats and kittens each year. A variety of cats are always available to suitable homes.
- 5* Boarding Cattery under 2018 regulations.
- We are open to visitors every day from 10-1 & 2-4. No appointment necessary.

T: 01303 862 243

E: rminniscats@gmail.com

Facebook: [@rhodesminniscats](https://www.facebook.com/rhodesminniscats)

www.rhodesminnis.co.uk

Seathwaite, Green Lane

Rhodes Minnis,

Kent CT4 6XU

Reg. Charity No. 262245



Park House Sanctuary Boarding Kennels & Cattery

Park House, Stelling Minnis CT4 6AN

Brick-Built Heated Kennels ~ Daily Walks

Reasonable Rates ~ Dogs must be fully inoculated

Heated Cat Chalets ~ Quiet Area Inspection Invited.

To book or for further information, call

01303 862622 or email lord.whisky@btinternet.com

www.lordwhisky.co.uk

Elham Dog Training Club & Coul-Pups Pet Care Service

Full, all-round dog training and pet care services

- Dog training classes at Elham Village Hall accept puppies from 12 weeks old
- 1-2-1 home based puppy training and education available from BEFORE you even get your puppy, in the comfort of your home and continuing for the first four weeks of your new bundle of joy coming home!
- Other pet care, dog walking and holiday cover available as part of the Pet Care Service

Contact us for more information:

Lyn Fagg 01303 862820 or Sue Coulstock 01303 488797

Email: elhamdtc@gmail.com or coulpups@gmail.com

Local Handyman

Household Repairs & Garden Maintenance.

Specialising in Carpentry, Fencing & Gates,

Tree Stump Removal, Power Washing, Waste Removal,

Item Pick Ups, Flat Pack Assembly.



No Job Too Small.

Free No Obligation Quotes

George English 01303 863716 or 07947 928176

Email: george1990english@icloud.com



Andy Mannering Flooring

SPECIALISING IN AMTICO AND KARNDEN LUXURY VINYL TILES

- Also safety flooring, rubber flooring, etc.
- Commercial and domestic work undertaken
- No job too small
- Free estimates and advice given
- Over 35 years experience
- Fully insured



Telephone: 0797 434 7248 or 01303 863095

Email: info@andymanneringflooring.com

Please visit my website for further information and feedback

www.andymanneringflooring.com

Lady Painter

ALL ASPECTS OF PAINTING
INCLUDING FURNITURE

CONTACT CHRISTINE FOR A FREE ESTIMATE

01233 750378

07866002627

cfoxelmsted@yahoo.co.uk



Technical Help When You Need It!

Gadget setup Internet help and training
Purchase advice Security concerns (parental advice)
Help with email TV remotes and tuning PC & Mac
For all those little problems you want to sort.

Call Nigel on 01303 647220 or email nigel@digitaldoctor.me

Experienced and qualified, 20 years in IT. Excellent rates.

Shuttlesfield Barn

High Quality, Self Catering, near Elham



Disability access with en-suite wet-room. Children & pets welcome. Heated outdoor pool. Fully furnished & equipped. Two bedrooms, both en-suite. Sleeps 4. Suitable for holiday or longer stays.

www.shuttlesfieldbarn.co.uk

Enquiries 01303 862729 CT18 8LB

info@shuttlesfieldbarn.co.uk



Mikeys

Painting & Decorating Services

including all exterior work

Telephone: 01303 863544

Mobile: 07967 523314

Email:

mikeysenquiries@yahoo.com

'a small local friendly family business'

ETCHINGHILL VILLAGE HALL HIRE FEES

The next time you are thinking of holding a function why not try Etchinghill Village Hall, which holds the highest Hallmark accreditation level (Hallmark 3), with its excellent facilities, including ample parking space.

The standard hire charge for the main hall and kitchen are:

Weekdays £11.00 per hour

Saturdays £13.00 per hour

Sundays £13.00 per hour

During the winter months (1 November to 31 March) a Winter Supplement of £1.00 per hour is added to the above rates.

Special rates apply for weddings and all day events with discounts on the above rates applying to Etchinghill residents and regular hirers.

The use of a separate Committee Room is also available.

For all bookings or enquiries please contact:

The Duty Manager on 07514 758936

The Lyminge Association

We're here to support and develop our community !!

Contacts:

Chair: Peter Barnes 863737
pb@pbarnes20.plus.com

Vice Chair: Adrian Willcox 862699
adrian.willcox@virgin.net

Treasurer: Janet Fry 863177
janet@rhodesminnis.org.uk

Committee Members: Marian Chubb, Richard Chubb, Fran Davis, Amanda Duckett, Dave Hunt-Cooke, Gillian Heywood, Sylvia Norris, Derek Smith, Ray Smith, Sandra Willcox

Newsletter: As for Peter Barnes above

bus times

for buses from Lyminge **The Sidings** to
Folkestone town centre via Etchinghill & Cheriton High Street

MONDAYS TO SATURDAYS except Bank Holidays

There are route 17 buses at 0705 (not Saturdays), 0749, 0909, 0934 (not Saturdays), 1004, 1034, 1104, 1204, 1304, 1404, 1514, 1614, 1619 (schooldays only), 1654 (schooldays only), 1719, 1749, 1834, 1929, 2113 and 2313.

There are also route 18 buses to Sandling Station & Hythe - for times see our website or call the number below.

SUNDAYS & BANK HOLIDAYS

There are route 17 buses at 1032, 1302, 1532 and 1802.

for buses from Lyminge **Wesley Terrace** to
Canterbury city centre via Elham, Barham & Bridge

MONDAYS TO SATURDAYS except Bank Holidays

There are route 17 buses at 0727 (schooldays only), 0732, 0752, 0903, 0938, 1028, 1128, 1235 (1228 on Saturdays), 1335, 1443, 1608 (1613 on Saturdays), 1703, 1803, 2001 and 2201.

There are also route 18 buses to Canterbury via Stelling Minnis and Bockingham - for times see our website or call the number below.

SUNDAYS & BANK HOLIDAYS

There are route 17 buses at 0903, 1133, 1403, and 1633.

These bus times will operate from 28 October 2018.



03456 00 22 99 @StagecoachSE
southeast.enquiries@stagecoachbus.com
stagecoachbus.com

Lyminge Village Hall

Registered charity 281845

Large, refurbished, flexible hall with great facilities

From Theatre productions to Weddings, Craft Fayres to Children's parties – we've got it all covered!

Capacity: 200 people dancing / audience seating,
100 for table seating, 50 or less for meetings

Well equipped: stage, kitchen, small rooms, ample parking facilities, disabled access

Access to: playground, skate park, large playing field

Situation: Rolling hills behind and the Church to the front.

Find out how we can help you with your next event:

Booking Line: 0749 7625 741

Email: lvh.bookings@outlook.com



Find us on facebook

Guideline prices



Find us on facebook

MAIN HALL HIRE ~ Fri, Sat PM £65

SMALL ROOM ~ £20

EXCLUSIVE ALL HALL ~ £320

Rhodes Minnis Village Hall

Charity No.800345

Rhodes Minnis Village Hall is located 2kms (1¼miles) from Lyminge and just off Longage Hill and Whitehorse Lane in Chapel Lane

The hall, which holds Hallmark accreditation, is ideal for children's parties, band practice, quizzes, meetings, wedding receptions, fundraising events and much more. It has a fully equipped kitchen.

Rates

Mon to Fri £15 per session £40 all day

Sat & Sun £20 per session

£30 for evening session and £60 all day

Sessions

AM session 08.30 - 12.30

PM session 13.30 - 17.30

Evening session 18.00 - 23.45

Separate rates for Bank Holidays and New Year and special rates for regular users.

For all bookings and enquiries please contact:

Martin Fry: 01303 863177

e-mail: book @rmvh.org.uk

TAYNE CENTRE HALL HIRE

Previously known as the Lyminge Methodist Church Hall

Clayson Hall

1 October to 31 May (including heating) £9.50 per hour :

£34.00 per 4 hour session : £66.00 full day

1 June to 30 September

£7 per hour : £25.00 per 4 hour session : £48.00 full day

Rigden Room (Parlour) with heating, if required*

£7 per hour all year (*electric - over heaters).

Burren Room - storage only

Overnight Stays

1 June to 30 September £50; 1 October to 31 May £60

For any enquiries please call **07971 722 401**



Lyminge Library Opening Times

Monday 2 - 5pm

Tuesday 9 - 12noon

Wednesday Closed

Thursday 9 - 6pm

Friday 9 - 12noon

Saturday 10 - 2pm

Tel: 03000413131

lymingelibrary@kent.gov.uk

EVENT PLANNER

This page is printed to give readers and organisers the opportunity of planning events without clashing with existing ones, which are already in the 'diary'. It is not intended as a means of advertising and we take no responsibility for errors or omissions. Acceptance is at the discretion of the editor. Please send your updates by email to pb@pbarnes20.plus.com or via methods outlined on Page 2. **Location and name codes follow:**

C&H: Coach & Horses; EVH: Etchinghill Village Hall; ERA: Etchinghill Residents' Association; ELVH: Elham Village Hall, JC Jubilee Centre; JF: Jubilee Field; KH: Korf House; LB: Laing Bennett; LBC: Bowls Club; LL: Library; LMC: Lyminge Methodist Church; LPC: Lyminge Parish Church; LSH: Lyminge School Hall; LVH: Lyminge Village Hall; LW: Lord Whisky; NP: Nailbourne Court; PC: Postling Church; PH: Lord Whisky, Park Hse; PVH: Postling Village Hall; RVH: Rhodes Minnis Village Hall; RMC: Rhodes Minnis Church; RMCS: Rhodes Minnis Cat Sanctuary; RR: Rigden Room; SNL: See News Letter for info; SP: Sibton Park; TC: Tayne Centre; TF: Tayne Field; WF: Well Field

One-Off Events

| Date | Time | Event | Where | Tel. No. | Date | Time | Event | Where | Tel. No. |
|------------|---------|-------------------------------------|-----------------------|-------------|-----------|--------|--|--------------|-------------|
| 06-Apr | 2pm | Lyminge Gardeners' Spring Show | TC | | 18-May | 7.30pm | Haywardians Concert | LMC | |
| 13-Apr | 10.30am | Royal British Legion Coffee Morning | St Mary's Hall, Elham | | 27-May | 11am | Lyminge Bowls Open Day | LBC | 621822 |
| 13-Apr | 9am | Spring Garage Safari | | 863537 | 14/6-23/6 | | Lyminge Midsummer Festival | | 862917 |
| 13-Apr | 10am | Etchinghill Litter Pick | EVH | 07753421266 | 13-Jul | | Anniversary Prom Concert | LVH | |
| 13-Apr | 2.30pm | RM Spring Flower Show | RMVH | | 28-Jul | 7.30pm | The Rudes Mechanical Theatre | TF | 862743 |
| 13-Apr | 7pm | Spring Quiz | LVH | 862928 | 23-Aug | | Memory Lane | LPC | |
| 04-May | 10am | Table Fair | RMVH | 863660 | | | | | |
| 8-10th May | | Around the World in 80 Days | Tower Theatre | | 12-Oct | 10am | Etchinghill Litter Pick | EVH | 07753421266 |
| 10-May | 7.30pm | Music on Friday | LPC | | 19-Oct | 7pm | Autumn Quiz | EVH | 07939076617 |
| 11-May | 7pm | Spring Quiz | EVH | | 01-Dec | 5pm | Christmas Tree Lights Switch On | Meriden Park | 07939076617 |
| 12-May | 3pm | Pathways to the Past | LPC | 863197 | 01-Dec | | Mount Pleasant Christmas Light Switch-on | | |

GARAGE SALE SAFARI 13th April 2019

Weekly Events

| Day | Time | Event | Where | Tel. No. | Day | Time | Event | Where | Tel. No. |
|-------------------|---------|-------------------------------|-------|--------------|------------------|-------------------|-------------------------------|-------|--------------|
| Mon | 10am | Open House | EVH | 863394 | Wed | 10.45am | Singing For Health | JC | 862364 |
| Mon | 10am | Bridge Club | LBC | 863177 | Wed | 11.45am | Pilates | TC | 07825109670 |
| Mon | 10.30am | Lyminge Larks (Singing) | LMC | 07951 572920 | Wed | 2pm | Bingo | EVH | 863819 |
| Mon | 11am | Cookery | JC | 269602 | Wed ⁵ | 7pm | French Conversation | KH | 862972 |
| Mon | 2&3pm | Computer Buddy (need to book) | LL | 03000413131 | Wed | 7pm | Tayne Centre Circuits | TC | 07925 982995 |
| Mon | 2.30pm | Knit and Natter | TC | 863049 | Wed | 7pm | Cantores Dominicae Choir | LMC | 07813071867 |
| Mon | 6.30pm | Ballroom/Latin/Salsa Dancing | TC | 07966 751991 | Thur | 9.30am | Baby Rhyme Time | LL | 03000413131 |
| Mon | 6.30pm | Judo Club | LVH | 862946 | Thur | 10am ¹ | RM Toddlers Group | RVH | 863096 |
| Mon | 7.30pm | Yoga | RMVH | 07977503897 | Thur | 10am | Art Group - Morning | TC | 211364 |
| Tues ¹ | 10am | Baby & Toddler Group | TC | 863274 | Thur | 11am | Shopping trips to Supermarket | JC | 269602 |
| Tues | 10am | Baby Signing | EVH | 07800737936 | Thur | 2pm | Art Group - Afternoon | TC | 862972 |
| Tues | 10.30am | Art Class | JC | 269602 | Thur | 6.45pm | Short Mat Bowls | LVH | 863842 |
| Tues | 11.15am | Chairobics | JC | 269602 | Thur | 7.30pm | Ballroom and Salsa Dancing | EVH | 07967979610 |
| Tues | 11.15am | Feel A Fairy Tale Sensory | EVH | 07800737936 | Fri | 10am | Feel A Fairy Tale Sensory | EVH | 07800737936 |
| Tues | 6.45pm | Short Mat Bowls | LVH | 863842 | Fri | 10am | Talk Time | LL | 03000413131 |
| Tues | 2pm | Pickleball | EVH | 863819 | Fri | 11am | Seated Exercise | JC | 269602 |
| Wed | 10.15am | Mature Movers (Exercise) | TC | 862873 | Fri | 11.15am | Baby Signing | EVH | 07800737936 |

Monthly Events

| When | Time | Event | Where | Tel. No. | When | Time | Event | Where | Tel. No. |
|-----------------------|---------|------------------------|-------|-------------|-----------|---------|-----------------------------|-----------------------|----------|
| 3rd Mon | 7.30pm | Etchinghill Film Night | EVH | 07544670363 | 2nd Wed | 10.30am | Mothers Union | NC | 862221 |
| Last Mon | | Parish Council Meeting | SNL | 07715221705 | 4th Wed | 2.30pm | RM Circle | RVH | 862913 |
| 1st Tues | 10.30am | Reading Group | LL | 03000413131 | Last Wed | 7.30pm | Quiz Night | C&H | 862694 |
| 1st Tues | 11am | Reminiscence | JC | 269602 | 1st Thurs | 7.30pm | RBL, Elham Valley Branch, | St Mary's Hall, Elham | 862508 |
| 1st Tues ³ | 7.30pm | LHS Talk/Event | TC | 862972 | 4th Fri | 7.30pm | Beetle Drive | RVH | 862616 |
| 3rd Tues | 9.45am | Family History | LL | 03000413131 | Last Fri | 1.30pm | Team Quiz | JC | 269602 |
| 3rd Tues ² | 7.30pm | Gardeners' Society | TC | 07703149008 | 2nd Sat | 10am | Postling Ch. Coffee Morning | PC | 863536 |
| Last Tues | 10.30am | Poetry Group | LL | 03000413131 | 3rd Sat | 9am | Saturday Market | TC | 862164 |
| 1st Wed | 10.30am | Lyminge Friends | RR | 862598 | | | | | |

¹ In term time only ² Except Jan and Feb ³ Except Jan, Feb, and trip in Aug ⁴ Except Aug and Dec ⁵ Not held in August

Out and About

Do you have any photos of local events or local groups in action, please call 01303 862699. Give your group a FREE plug !



It was all heads down and brains engaged for the **Lyminge Guides & Rangers** quiz held on Saturday 9th March at Etchinghill Village Hall. Well done all concerned for a great evening !



The Memorial Grove - 28 trees were recently planted at the top of Court Lodge Green [the Bumpy Field] in memory of those from Lyminge who fell in the Great War and are commemorated on the War Memorial. [See also the Parish Council pages at the back of this Newsletter.] A great turnout of all ages including one child who is a descendant of one of those remembered.



Lympinge Library was the setting for a Book Signing as **Tony Barnes** launched his memoir entitled "No One Ever Invites the Vet to Dinner". Seen here with Jane Buss signing copies on 28th February.



Lympinge Art Group with all the members concentrating on their masterpieces. The group meets at the Tayne Centre on Thursdays.

Way back in January 2016 we featured an article about **John Long** who had just been awarded the French Legion of Honour Medal for his involvement in the liberation of France in 1945. John celebrated his 99th birthday at the Coach & Horses this March.



MEMORY LANE performing to a completely full house on Saturday 2nd March at the **Lyminge Association's SPRING SIXTIES EVENING**.



Mystery Photo

Back to another Mystery Photo this month ...



Where is this junction ?

A great evening was had by all with the Hall decorated with pictures of iconic events, items and people from the 60s. The atmosphere was completed with lighting and members of the audience dancing in front of the stage.



DILTON MINI SKIP HIRE

Ballast, Hardcore, Sand
and Topsoil Supplied
REGISTERED WASTE CARRIER
01303 812448 or 07799 433754

'Helping you enjoy your garden'

CRT Gardening

Knowledge of general gardening, including lawn care, hedge trimming and cutting, vegetable garden work, fencing installations and repairs, small and medium size tree work and ongoing maintenance of all of them.
Heavy-duty work is also undertaken.
Free estimates; fully insured. Karl Dodd 07967442518
Email: karl.dodd@live.co.uk www.crtgardening.com

Red Dragon I.T. Ltd.



- Windows, Mac & Linux Systems
- PC Health Checks
- Wired & Wireless Networks
- Website Design
- Graphic Design

T: 01303 723456 | E: info@rdit.co.uk | www.rdit.co.uk
The Old Granary, Hanover Mill, Church Rd, Merham, TN25 6NU



KW CONSTRUCTION
PLASTERING & RENDERING SPECIALIST

ALL GENERAL BUILDING INCLUDING:
ROOFING, BRICKWORK, TILING, PATIOS,
LANDSCAPING, SCREEDING, GROUNDWORK,
DRAINAGE, EXTENSIONS, RENOVATIONS,
REPAIRS & MAINTENANCE.

30 YEARS EXPERIENCE, COMPETITIVE RATES,
A FULLY INSURED, PROMPT & RELIABLE
HIGH QUALITY LOCAL BUILDER
KENNY 07743488361



Laing Bennett

PHILIP A CHAPMAN

With our excellent local knowledge, service
and two local offices we will get you moving

The Estate Office 8 Station Road Lyminge Kent CT18 8HP
T 01303 863393 E lyminge@laingbennett.co.uk
134 High Street Hythe Kent CT21 5LB
T 01303 264846 E hythe@laingbennett.co.uk

www.laingbennett.co.uk



Hawkinge
Veterinary Surgery

Veterinary Surgery

Opposite Lidl supermarket

A new independently owned veterinary surgery for small animals.
Separate waiting, consultation & recovery rooms for cats/small pets and dogs.

Opening hours: Monday to Friday 08:00-19:00

Saturday 08:30-13:00 24 hour emergency service

Hawkinge Veterinary Surgery 9b Defiant Close Hawkinge

CT18 7SU Tel: 01303 764190

www.hawkingevetsurgery.co.uk

hawkingevetsurgery@gmail.com

SNIPPERS & CLIPPERS

UNISEX HAIR SALON

✂ APPOINTMENT NOT ALWAYS NEEDED

✂ WEDDING & SPECIAL OCCASION

✂ GENTS WELCOME

✂ FREE WIFE

✂ SHELLAC NAILS

4 Station Rd, Lyminge,
Folkestone,
Kent, CT18 8HP

01303 647 222
info@snippersandclippers.co.uk



SCRUBBERS - Est. 1988

THE HOME AND COMMERCIAL CLEANERS

One off, regular or moving day 'Blitz'

Oven cleaning - Ironing

Carpet cleaning and more...

For a friendly and reliable service

Free Estimates

Tel: 01303 249288 or 07834 128671

Dennis Huntley

Installer of wood and multi-fuel stoves, heating engineer,

chimney sweep

Lyminge 01303 862 343

Mobile: 07850 784 365



Lou Lloyd Carpenter

loulloyd@rocketmail.com

07984 426214

Kitchens, Flooring, Wardrobes,
Doors, Decking and more!



CEDAR HOME MAINTENANCE

General Builders and Roofing Specialist

Roofing * UPVC windows/doors * Kitchens/bathrooms
Plastering * Electrical installations * Plumbing
Call now for a free, no obligation quotation. All work carried out
by qualified tradesmen. Fully insured - all areas of Kent covered.

Mobile: 07968197613 Office: 01303 230787

cedarhm@hotmail.co.uk & www.cedarhomemaintenance.co.uk



Bookkeeping Services

www.aabookkeepingservices.co.uk

Bookkeeping and Financial Accounting

Accounts Preparation for Sole Traders and Partnerships
QuickBooks, Excel, TAS, Sage and VT Final Accounting Software

Self-assessments and VAT returns

Over 10 years' financial experience.

Fixed prices available or hourly rate £15 per hour

Anita Adams BSc (Hons) MAAT AATQB

07891 135766 or 01303 864254 or anitaadams@live.co.uk

Tressenden Designs

A seamstress and costume maker with 8 years of experience.

- ♦ Clothing alterations ♦ Repair work undertaken ♦ Made-to-measure; create a bespoke piece for those special occasions
- ♦ Modern and vintage designs ♦ Costumes, ball gowns and wedding dresses

For more information or a quote please contact Amy on: Mobile: 07853 202304 Email: amy.louise.ford@hotmail.co.uk



D.M.B. Plastering

All aspects undertaken
*Interior. Exterior. Plastering. Rendering.
Coving. Ceilings. Wall. Floors
Finest quality assured. CSCS Certified.
30 years experience.*

Free estimates. Reliable service. Fully insured.

Call **David** on **07818 607209**

Personal Computing

For straightforward I.T. advice, solutions
and training

Contact: **Steve Ashman**
862869

sra@ashman-consulting.co.uk

P Davis + Co

General Builders and Roofing Specialist

All work undertaken

Call for free estimate

Tel: **01303 863049** or **0784 6769643**

B.M. Plumbing & Maintenance Services

Local Lyminge Tradesman

Plumbing and heating works. Complete bathroom
install including tiling. General building maintenance
undertaken. No job too big. No job too small.

Cheaper rates for senior citizens



07890854128 Benmillsplumbing@hotmail.co.uk

Wilco Plumbing & Heating

Central Heating Installations & Repairs

Gas & Oil Boiler repairs & replacements

5 Year Guarantee on Worcester Bosch Boilers.

Local Experienced Engineer, Emergency plumbing 24/7 call out

Registered with the Institute of Plumbing

Gas Safe Registered-OFTEC Registered

01303 862173 07860 452640

paul@wilcoplumbing.co.uk www.wilcoplumbing.co.uk

JON DAUGHTERS - Local Builder

All aspects of general building works undertaken including:
roofing, kitchens, bathrooms and small extensions

Trading for over 30 years

Free quotes, no obligations, fully insured

Telephone 01303 863371

House Clearance covering South East Kent.....and beyond!

CAROL CREES CLEARANCES



- Est. over 30 years
Full/part house clearance
Fair prices paid
Antique/Vintage/Retro/Modern
Registered rubbish carrier

Contact **Simon Cullen** on **07745 421680** or **sijnzo@aol.com**



**East Kent
Foot Care**

www.eastkentfootcare.co.uk

07745 532075

**Mobile Foot Health
Practitioners**

Treating and managing
foot and nail conditions,
fungal, fingernails, corns,
diabetic foot care, callus



**ibak
RUNNER-UP**

Total garden care for all your needs

TIM MILLETT

Grass Maintenance, General Gardening, Small & Medium

Size Tree Work, Stump Grinding and Wood chipping

Fencing Repairs & New Installations

Turfing, Hard & Soft Landscaping

Free Estimates - Fully Insured

01303 863676

07752 880583

Email: **info@tmhorticulture.co.uk**

THE BIG LITTLE BATHROOM COMPANY



COMPLETE BATHROOM SUITES • BESPOKE CAST IRON RADIATORS
TAPS • SHOWERS • TILES • ACCESSORIES • TEA & COFFEE

CANTERBURY ROAD, ETCHINGHILL, KENT CT18 8BS

sales@theblbc.co.uk • 01303 864349 • www.theblbc.co.uk

N.P.C.

Domestic Appliance Services

*Service and repair of washing machines, tumble driers,
dishwashers, cleaners and small electrical work.*

For a prompt and friendly service

Call Neil Collard **01303 892234** or **07798716044**
or Google me on Yell.com

Auto Economy Centre

Fully equipped Mechanical Repair & Service Centre

with the latest diagnostic equipment

MOTs £44.95

01303 863656

Orchard Garage, Canterbury Rd, Etchinghill

www.autoeconomycentre.com

Old English Pine

Antique, repro pine, oak and French-style painted furniture with beautiful and reasonable priced accessories to make
your house a home. Bespoke pine units made to order. Huge shop - over 3 floors. Open 7 days a week.

Tel: **01303 248560** **www.oldenglishpineinkent.co.uk** **100/102 Sandgate High Street, Sandgate**

Financial Planning

David Gridley - Chartered Financial Planner

Range of quality advice from a fully qualified adviser:

- Pre- and Post-Retirement Planning
- Investment Planning
- Inheritance Tax Planning

For further information, please contact our Lyminge office
David Gridley FPFS

Tel: 01303 863959 Email: davidgridley@sjpp.co.uk

Local Ironing Lady

Smart,
Friendly Service

smartpress
SERVICES

Free delivery & collection – min order £10

Call or text - 01303 864229 / 07702 321686
acres@hotmail.co.uk

OIL BOILER SERVICE

*Professional Friendly Service. Prompt Response to
Breakdown Calls. Over 40 Years Experience.*

For Routine servicing, emergency breakdown calls
and commissioning, contact:

P & V QUENBY LTD (Est 1987)

01227 760428

www.oilboilerskent.co.uk

T. Metcalfe Fencing Contractors

Approved Expert Installer for Jacksons Fencing

Established over 30 years

Fully insured - Highly experienced teams



Panel fencing, gates, decking, pergolas, post & rail,
stock fencing, security, landscaping & tree surgery.

01303 840201 07790 290 155

metcalfefencing@btinternet.com

Proprietor - Derek Burr,
Ash Ridge House, Elham



OAK
creative



we're at Newingreen, call for a chat on 01303 812848

www.oakcreative.net

Advertising
Branding
Digital Design
Illustration
Marketing
Print Design
Web Design & Development

Fincham Plumbing & Heating

Over 30 years experience. Gas Safe, CIPHE, WIAPS registered
Lyminge residents

Rosemary and Martin Fincham
07835 851 706

For your bathroom installations from start to finish,
tiling, plumbing, gas, heating, radiators, boiler servicing
Free estimates



SPRINGRISE
CANINE CARE SERVICES

*Dog walking, pet and smallholding
sitting, dog day care, dog
accommodation & dog playground
and so much more....!!*

Free (no obligation) consultation.
CV & references available.
Fully insured and security
screened.

Mobile: 07582407637 Email: susannahparkin@googlemail.com
Website: caninecare.thespringrise.co.uk

**HAND MADE CURTAINS,
ROMAN BLINDS & SOFT
FURNISHING**

CURTAIN ALTERATIONS

TEL: VALERY WREN 01303 237755



Mini Digger and Operator for Hire

Call Mick for a
competitive quote

Mobile: 07979 881873

Landline: 01303 862079

Email: mickattwell@btinternet.com



**ASHTON
TREE CARE**

07929 627622 • 07769 908027

OLLIE@ASHTONTREECARE.CO.UK

City &
Guilds
NPTC

ALL WORK FULLY INSURED
HEDGE CUTTING • STUMP GRINDING • TREE SURGERY

SPEARPOINT
TREE SERVICES

All Aspects of Tree
Work Undertaken
NPTC Qualified
Fully Insured
Please call **Shane**
for a Free Quote
07963 203564 or
01303 621992



Sarah de Rougemont

Craftsman/Co-ordinator

UPHOLSTERY

All commissions considered
01227 455841 or 07973 377817

Red Boot
Tech Services

Business and Home Tech Services

Design - Install - Fix - Upgrade

Dave Turnbull

01303 64 1000 | 07970 80 40 60

dave@rbtechservices.co.uk

www.rbtechservices.co.uk

- Poor Wi-Fi coverage? Computer too slow?
- Do you require help setting up new equipment?
- Would you like to control your heating and hot water remotely?
- Need training or guidance to get the best from your investment?
- Contact me to discuss options and solutions to all your tech questions



Ralph Allard Chimney Sweep



All chimneys, boilers and stoves swept.
Brush and Vacuum. Certificates issued.
HETAS and NACS registered, fully insured.
Member of National Association of Chimney Sweeps
01303 844465 or 07813716654

AIR LINK CARS

(You pack up, we pick up)
Airport, Seaport & Long Distance Travel Specialists.
The Family Run Business where service really counts
Estate cars and People Carriers



Fixed price 24hrs a day. No extras.
Written Confirmation of booking.
For the Easy Airport Link, Think AIR LINK!
01303 670370 - 07766 824 474
airlinkcars@yahoo.com

THE CLINIC
Garden Suite
4 Station Road
Lyminge
Kent CT18 8HP
01303 863359
Mob: 07905 438357.
Email: lyle@cliniclyminge.co.uk

Lyle-Isabelle Arnold
*Podiatrist M.Chs, MCP
and Clinical Hypnotherapist MNCH Reg.*



Sunhouse Electrical

Your local reliable Electrician
Part P Registered & Elecsa Approved
On Electrical Safety Register & Fully Insured
For a free quotation call James on
01303 766333
www.sunhouse-electrical.com



GOSBEE CONSTRUCTION

Fencing - Gates - Paving - Resin Surfacing
35 years experience.
Jacksons Fencing Expert Installer
Call Martin Gosbee

Checkatrade
Where reputation matters

07974 835511 \$ 01303 863337
gosbeeconstruction@gmail.com

Figures 4 Business LLP

Plan – Monitor – Control



Denise Roberts ACIS, ACMA

- Business plans and budgets
- Bookkeeping and payroll services
- Financial reporting & monitoring
- Qualified Company Secretary
- Qualified Management Accountant
- over 25 years experience

T: 07511 097707

E: drobotts@f4b-kent.co.uk

W: www.f4b-kent.co.uk



MANOR VETERINARY CLINIC

We care for them all, great and small

Lyminge Clinic: Methodist Church Hall
Tuesdays 2.30 - 4.30pm

Please call to book an appointment - 01303 273203
www.manorveterinaryclinic.co.uk

Matthew Reynolds
Window Cleaning Services
More than 20 years experience in Lyminge
and surrounding villages
For free estimates, please call
07975 510293

GARDEN HELP

Not enough time? Need some help?
Lady gardener has spaces available.
Recently moved to this area.

For a knowledgeable, friendly and reliable service.

Please call Julie
07734 060032 / 01303 863234

REGISTERED OSTEOPATHS & MEDICAL ACUPUNCTURIST

Adam Price B.Sc Hons (Ost) Katie Price B.Sc Hons (Ost)
The Clinic 01303 863359 or mob: 07980 897382

- Treatment of lower back pain, both acute and chronic
 - Treatment of tension/cervical type headaches both acute & chronic
 - Treatment of various stiff & painful arthritic conditions
 - Treatment of sports injuries, both soft tissue & skeletal
 - Deep tissue back, neck & shoulder massage for symptomatic relief
- The cost of your treatment may be recoverable from your insurers. Please check

LYMINGE FOOD AND WINE

01303 862225

We are here to serve you

Mon. – Sun. 7:00am to 9:00pm
including Bank Holidays
Post Office and National Lottery
Here



**POST
OFFICE**



South East Aerial & Satellite Solutions

Digital – Freeview – Satellite – Aerials

Supply and fit of quality digital installations, FREEVIEW, SKY,
aerials, poor reception and problem solving, upgrades and
repairs by fully accredited engineers

Free quotations and advice, fixed prices, fully insured

Freeview

NO CALL-OUT CHARGE
07825 168010 - 01303 862361

freesat



HOME VISITING OPTOMETRIST - providing professional eye care in your home

If you are over 60 years of age and no longer able to get out on your own, then you are eligible for a NHS
sight test in your own home. Please call to arrange an appointment:

Elaine Edwards BSc(Hons)MCOptom 01303 840541

Registered with the General Optical Council (01-15421) Member of the College of Optometrists Member of the Association of Optometrists

COUNTRY FARE

CATERING SERVICES

Country Weddings, Christenings and All Family Gatherings, Corporate Lunches, Seasonal Parties & Celebration Cakes

Sally Burr 01303 489795 07814 610995
sallycountryfare@gmail.com

FRESHLOOK GARDENS

Regular lawn mowing service. Garden design. Hard and soft landscaping. General garden work, fencing and decking. Turfing hedge cutting, small and medium tree work. Water features, ponds and patios.

For free quotation ring **Danny Scott**
01303 242140 or 07795510093
mrdanscott89@gmail.com

Established since 1990. Fully insured.

Filehurst Associates

Tel: 01303 239990 E: info@filehurst.co.uk

Domestic & Business Removals - UK & France
Long or Short Term Storage
Business Document Storage
Call now for a no obligation quote



still THE local and regional specialist...

SALES & LETTINGS
Call now for your free market appraisal
01303 840422
elham@colebrooksturrock.com

incorporating
Browns

Sandwich 01304 811191 | Bridge 01227 831988 | Minster 01841 832004 | St Margarets At Cliffe 01304 852212 | Walmer 01304 861133 | Saltwood 01303 880000 | Elham 01303 880422 | Haverkinge 01303 880000

Computer Repairs 01303 241325 07968 129902

PCs, MACs, Laptops, Tablets & printers,
Upgrades & Repairs, Internet & Email, virus removal,
Office Setup, Backup & Recovery & much more ...
Tuition available by a qualified tutor.

Usual Fee £55

Web sites built & hosted from £10 per month

See www.computers-in-lyminge.co.uk for details



Local Tradesman

J Tappenden

Established 36 years

Painter/Decorator/Builder

01303 862467

077755 78008



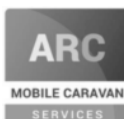
Alan Croucher
Caravan Engineer

07921 480919 - 01303 863194

Caravans & Motorhomes "WE COME TO YOU"

www.arcmobilecaravanservices.com

"Your manufacturer's warranty is safe in our hands"



Jackson Plumbing Property Maintenance

Complete bathrooms and tiling
No job too small. Special rates for OAP's.

Telephone: home/evening 01303 270691
or daytime 07773 089398 or 07864 929826

M. J. Athow

BUILDER & DECORATOR, EST. 1965
GENERAL MAINTENANCE

Qualified and Insured. Free estimates
Telephone: 862616 Mobile: 07976 306665
Email: mick@athow.co.uk



ROBERT KENT Cert. fp
FUNERAL DIRECTOR

Direct
Cremation

£999

Fair Priced
Cremation

£1950

ONE FIXED PRICE INCLUDING
ALL CREMATION FEES



01303 684062

RKFUNERALS.COM

Trevor Law Electrical Installations

Serving Elham Valley for 30 years
Part P Registered

01303 862348
07850 970087



J. V. Services

Servicing and Repairs:

- Garden Machinery
- Ride on Mowers
- Trailers & Horseboxes
- Quad Bikes
- Classic Cars

(Free collection and delivery)

Mobile Mechanic

Serve/Repair/Full Restoration:

- Compact Tractors
- Vintage Tractors
- Classic Tractors

Mobile: 078 0300 3047
john@jvserviceskent.com



JBS
BUILDERS

Specialising in Driveways, Brickwork, Patios, Fencing, Landscape Gardening. Tree work undertaken (lopping, felling and clearing).

General household repairs, painting, plastering, power jetting & cleaning.

No job too small!!! All work guaranteed and insured.

For free advice and quotations please call: 07825 168010/ 01303862361 (anytime)

