

# THE LYMINGE NEWSLETTER

For the communities of LYMINGE, ETCHINGHILL, RHODES MINNIS and POSTLING

April 2021

Produced by  
THE LYMINGE ASSOCIATION  
[www.lyminge.org.uk](http://www.lyminge.org.uk)

From The Lyminge Association



**Happy Easter**  
to everyone in our community



**Lyminge**  
Anglo-Saxon  
**Festival**



New Dates for The Lyminge Anglo-Saxon Festival

**21st June - 4th July 2021**

Following the release of the Government's unlocking strategy, the organising committee has put The Lyminge Anglo-Saxon Festival back by a couple of weeks. Thankfully, all of the people previously committed to the Festival are willing and able to re-schedule.



With the lockdown hopefully coming to a conclusion very shortly, I thought I would take this opportunity as both chair of The Lyminge Association and editor of the Lyminge Newsletter to put in place some thanks, on behalf of us all, to those that have helped provide a cohesive network in our community throughout the COVID-19 pandemic.

Our immediate thanks go to each and everyone of the NHS that have provided unstinting care for us all. The staff of the local surgeries have worked both above and beyond what would normally be expected of them. More recently, they have provided staff, both in the form of nurses and administrators, to help staff the primary care network facility at Oaklands where the local hub for vaccinations has been taking place. Many extended their working hours to work as volunteers in order to meet the increased demand and all this was on top of them completing their normal day job at their own surgery. Without this sort of selfless support the country would be nowhere near having vaccinated half the adult population.

Perhaps this is also an opportunity to thank the families of all the key workers who have undoubtedly been affected by the disruption caused by the irregular working hours being worked by their partners or parents.

Thanks should also be given to those lay volunteers who have given of their time to help man the vaccination centres in our area. Their skill at darts is being put to

good use vaccinating patients - after suitable training!! It shows what stalwarts we have within our community for which we should, again, all be very grateful.

Thanks are also given to the local services, the pharmacy and the local shops who have served us throughout and at the same time having to ensure they protected their own safety.

Other services, for which we are indebted, are those of Age UK who acted as a hub for the many volunteers who delivered prescriptions and offered all manner of services to enable people to live without putting themselves at risk. With a fair number of more elderly people in our community, I'm sure they would wish to voice their thanks for all this help.

A debt of gratitude is extended to all the services who have continued to support us whether it be emptying the dustbins, delivering the mail or supplying the necessary groceries. When the first lockdown was announced we might have thought we could manage for three weeks, but I wonder where we would have been 12 months down the line if none of the services had been put in place and people hadn't continued to offer their services. A vote of thanks should also be given to the local and county councils and their staff, not forgetting our elected representatives who have worked tirelessly to develop new strategies to cope with the issues that have arisen, whether it be providing new testing and vaccination centres, or reworking budgets to address the changing situation.

With this pandemic has come major social changes which have, and continue to have, a significant impact on each and everyone of us. Furlough, working from home, home-schooling, loss of employment..... they have all had an impact on us all. This influence varies in severity, We should therefore all try and be mindful of the impact it has had on people's health. Even returning to work or back to school can generate concerns for some, since the very idea of socialising again can be fraught with issues. Thankfully, many of these are problems melt away as people return to some form of normality.

As is so often the case when writing a note of thanks to such a diverse group, some people may feel left out for which I apologise. So, on behalf of all of us in the community, I thank you all, including those I may have forgotten, for your help and support. I JUST CAN'T THINK WHERE WE WOULD HAVE BEEN WITHOUT YOU.

*Peter E Barnes*

Diary of Events will return next month. Please ensure your details are up to date.



## St Mary and St Ethelburga Parish Church, Lyminge

Although we are now legally allowed to hold services, for safety reasons we have decided that, at present, no services will be held in the church building. It will, however, remain open for private prayer during daylight hours 9am – 4.30pm

There are on-line services available on the benefice website: [elhamvalleygroupofchurches.co.uk](http://elhamvalleygroupofchurches.co.uk) or Alison Dale on 07985025381

## Lyminge Methodist Church

**GOOD NEWS!** Circumstances permitting, we are hoping to resume restricted services in April, under Government guidelines (masks, social distancing, etc.).

4th April - Mrs Christine Slater - Easter Celebration!

11th April - NO SERVICE

18th April - Mr Hugh Burnham

25th April - NO SERVICE

On-line facilities will continue each week as before.

Services will begin at **11am**, but sadly we are not able to share fellowship or refreshments afterwards. We look forward to welcoming you back.

## Postling Church Services

### EASTER SERVICES

**Thursday 1st April 7pm.** A meditation for Maundy Thursday by Zoom

**Friday 2nd April. Good Friday 12-1pm** (weather permitting) An hour in front of the cross in Postling Churchyard. Bring your own seat!

**Sunday 4th April. Easter Day.** Holy Communion for the Elham Valley by Zoom at 9.30am Prayers and readings in front of the cross in Postling Churchyard at 11am

For details of the Zoom link, please contact Alison on [elhamvalleygroupofchurches@gmail.com](mailto:elhamvalleygroupofchurches@gmail.com)



## Christians In Lyminge



There will be a service in the Methodist Church on Easter Sunday 4th April at 11am, Christine Slater will be the preacher.

There will be fortnightly services thereafter.

For details of services at the Parish church, please refer to the website:

[www.elhamvalleygroupofchurches.co.uk](http://www.elhamvalleygroupofchurches.co.uk)

Meanwhile, keep safe and enjoy the, hopefully, spring weather.



## Lyminge Newsletter

**Terms & Conditions: Copy deadline for next edition - 18 April 2021.**

Please email your copy to the editor ([pb@pbarnes20.plus.com](mailto:pb@pbarnes20.plus.com)). Your payment must be received before your article or advert can appear in the Newsletter. Please leave your payment along with your name, organisation, telephone number and copy of your ad in a sealed envelope at the Lyminge Library.

**Business adverts** cost £9.50 per month or £95.00 per year. **Personal and charity adverts and articles** from £3 per month, or £30.00 per year. The annual rate offers 12 entries for the price of 10. Please make cheques payable to **'The Lyminge Association'**. If you do not have email, a typed paper-copy may be left with the payment at the Library (when back open). Printed by Canterbury Print & Mail.

Lyminge Association accepts no liability for the accuracy of the advertisements or subsequent actions arising in conjunction with advertisers in the newsletter.

**Further details from Peter Barnes (editor) on 01303 863737 or [pb@pbarnes20.plus.com](mailto:pb@pbarnes20.plus.com)**



## Etchinghill Update - April 2021

### ETCHINGHILL RESIDENTS' ASSOCIATION

**Contact:** David McCombe, Chairman - Etchinghill Residents Association (ERA): dmccombe1@gmail.com or 07939 076617 www.etchinghill.info Facebook – Etchinghill Residents

### SPRING QUIZ - ST. GEORGE'S DAY - FRIDAY 23RD APRIL 7 PM

We will be holding a Zoom-based light hearted quiz comprising 5 rounds of themed and general knowledge questions. Please contact Dave at above to register and to receive more information, or to make a donation if you are unable to join us. The entry fee is only £3 per adult; children under the age of 16 and full time students are free. All proceeds will go to ERA funds which are used for the benefit of the community.

**FILM NIGHTS** - These are currently under review and more information will be supplied pending village hall requirements and government regulations. However, we do not envisage restarting screenings until July at the earliest.

### LYMINGE PARISH SPEEDWATCH TEAM

The Speedwatch Team are there to remind drivers that there is a 30 mph limit on all parish roads. When drivers speed through the village, the vehicle details of these miscreant drivers ignoring the speed limit, are noted and then sent to Police Headquarters. When Covid-19 restrictions are lifted, the Speedwatch sessions will resume. At the moment we have 18 volunteers to man the various sites in the parish and we would welcome any new volunteers. If anyone is interested, please contact Colin Manvell: colinmanvell@btinternet.com or phone on 07530094435

### PRIMARY CARE NETWORK VACCINATION UPDATE from the N.L.S. Practice Manager.

Oaklands Vaccination Centre is currently inviting the following groups from the Primary Care Network Surgeries: everyone in the over 65 age groups and the clinically extremely vulnerable, (not including pregnant women and those under 16 years), who have previously been unable to attend their vaccination appointment. Also, adults aged 16 – 65, who are in an at-risk group, are currently being invited. There are a large number of patients in these categories across the 6 surgeries in the Primary Care Network group, so it will take a few weeks

to vaccinate everyone. In addition, Oaklands has started administering second doses for patients that are now due. Residents in other age cohorts are receiving invitations directly from NHS England to book their vaccinations at other Centres. N.B. The Primary Care Network Practices include the New Lyminge Surgery, Church Road Lyminge, Hawkinge and Elham Valley, White House, Sun Lane and Oaklands, Hythe.

**Etchinghill News Coordinator:** jacqui.blandford@gmail.com **Ph: 07543 966830** (Also member of the N.L.S. Patient Participation Group). Did you know? The earliest recorded name of Etchinghill is Tetting Hield, "hield" meaning slope.

## From the Days of Old.....

The photograph shows the Elham Valley Sea Cadets outside the Elham Rural District offices now Age Concern in Lyminge. 29th May 1943

Lyminge Wings for Victory - Elham Valley SCC Guard of Honour. Officer - Sub Lieutenant, Major.

Front Row Leading Cadet Ted Burren, Cadet R Morgan, Leading Cadet Charlie Phillips, Cadet Dickie [Richard] Want; near figure second row Leading Cadet Arthur Bailey. The anchor badges on their arms denotes rank.

*With thanks to Duncan Harrington, and the Lyminge Historical Society*



## District Councillors' Update - April 2021

**Hythe Community Hub** – just a reminder that if you require help with shopping, prescription collection or just signposting to relevant agencies, the Hub is there for you 01303 269602, email covid-19@ageukhl.org.uk

**Financial Support** – the District Council is continuing to support residents who may be eligible for financial support – with a special focus on addressing some of the other issues which might cause difficulties – see [www.folkestone-hythe.gov.uk](http://www.folkestone-hythe.gov.uk) or telephone Customer Services 01303 853555

**Vaccination** – The vaccination programme is making good headway and at a meeting, Jenny was at recently of the Kent & Medway Joint Health & Wellbeing Board, it was reported that over 90% of the first four cohorts had been vaccinated. It was also reported that Kent was not experiencing as much resistance as other areas. However, it was emphasised that we should continue to encourage residents to take up the offer of vaccination as and when offered. At this meeting, Kent & Medway both confirmed that they were closely monitoring the Covid-19 cases relating to the return to school so that immediate action could be taken if necessary. On 12 March, the most vulnerable, sofa surfers, those in bed and breakfast and anyone sleeping on the street were taken by council staff and support agencies to the Folca Vaccination Centre in Folkestone.

**Budget** – On 24 February, the full Council agreed the budget and council tax level for the year ahead. A 1.99% in Council Tax was agreed which equates to an increase of 10p per week for a Band D Property.

**Princes Parade** – Work has begun to improve the ecology of the northern bank of the Royal Military Canal for reptiles, bats and birds. The work, recommended by ecologists, is to carefully manage the wildlife of the Royal Military Canal long-term as part of the Princes Parade development. Council officers are removing dense vegetation - including dead trees and invasive weeds - to create a better environment for certain species of wildlife. The work has been carefully timed to minimise the effect on nesting birds later in the season. To enable this work to take place sections of footpath alongside the canal will have to be temporarily closed.

**Carbon Action Plan** – A 33-point plan to continue the District Council on its journey to reduce its carbon emissions to zero by 2030 has been given the go-ahead. The range of actions, some of which can be tackled quickly and others which will take longer to implement, focus on six key areas - energy; behaviour change; transport; water; contracts and biodiversity/green space

**Triennial** – Celebrated Artist Rana Begum has been revealed as the artist behind the impressive designs of the newly refurbished and repainted beach huts. The Triennial will include the beach huts in its programme and will run between 22 July and 2 November.

**Medical Scholarship** – We are pleased to report that the District Council has agreed to support a medical student to the tune of £5000 per year for the full five years of the Bachelor of Surgery, Batchelor of Medicine course at the Kent and Medway Medical School (KMMS).

**KCC and PCC Elections 6 May** – Just a reminder that the deadline for postal vote applications is 5 pm on 20 April and proxy vote applications is 5 pm on 27 April.

**Folkestone & Hythe High Street Fund** (Lyminge is on the list of eligible High Streets) - *Grants are available from £5,000 to £50,000 to: Bring high street properties back into commercial use; Upgrade and adapt commercial properties which improve their appearance; Improve the townscape, such as the introduction of signage, new route ways, new public realm; Introduce technology and new innovative products to support the development of commercial operations; Bring forward initiatives and events to increase the vitality of the high street; Work towards developing a project as a precursor to a further application to the fund or other funding source.* The grants will cover up to 50% of the total project cost, in normal circumstances, but up to 100% grants will be considered in special cases. If you have any questions about the application please contact Lorraine Smith 01303 853274 [lorraine.smith@folkestone-hythe.gov.uk](mailto:lorraine.smith@folkestone-hythe.gov.uk)

Cllr Jenny Hollingsbee – Contact information – [jenny.hollingsbee@folkestone-hythe.gov.uk](mailto:jenny.hollingsbee@folkestone-hythe.gov.uk) 07887918458 or twitter @jennyhollingsbee



### Advice to Users of Newsletter Advertisers

The Lyminge Association is hugely grateful to all our advertisers, many of whom are local trades people. This mutually supportive relationship benefits us all with the Association investing excess funds back into community projects.

However, the Lyminge Association does not vet, nor does it endorse any of our advertisers. Potential customers should therefore show due diligence when seeking the support of any of the traders. Personal recommendation is always a prudent way of buying services or by seeking comments from the traders' previous customers for their recommendations.



# Pathways to the Past



Plans are progressing for the Anglo-Saxon themed 2021 Lyminge Festival that we are organising with the Lyminge Association. To coincide with the schedule for lifting Covid restrictions, events will now be in the two weeks 21 June to 4 July.

We will be particularly pleased on 26 June to welcome Bishop Rose, the Bishop of Dover, to unveil the new artworks we have commissioned for installation in and around the church. We are also intending to have the new information panels in place around the village and a new information display about the church and its history in the church. There will be a lot to see.

Over the weekend of 3-4 July, popular re-enactment group Øst Centingas will be making a welcome return to Lyminge with an encampment on Tayne Field, displays of combat and authentic crafts and costumes. This year, we are also promised a replica longship of the type that brought many raiders to our shores in the centuries leading up to the Norman Conquest.

## SPECIAL LYMINGE FESTIVAL ALE

We are also partnering with the Coach and Horses who will be the sole outlet throughout the Festival for a special Festival Ale. **Queen Ethelburga's Ale** is being brewed for us by local brewery Canterbury Ales, to a recipe created by champion beermaker Richard Baldwin. The beer will be a traditional bitter, brewed to about 4.2% ABV, using a blend of Pale, Crystal and Black Malts and East Kent Goldings hops. This will be for sale on draught at the pub. There will also be a limited quantity available in bottle. We are taking advance orders, so if you wish to guarantee your own supply of **Queen Ethelburga's Ale**, you can do so at the special price of £33 for a case of 12x500ml bottles, using our email below. All beer will be sold through the Coach and Horses and will need to be collected in person.

We are still looking for funding to help us complete this project. If you would like to donate, then please go to our PayPal giving page at: [https://www.paypal.com/donate?hosted\\_button\\_id=MRXPPMCTDCYWC](https://www.paypal.com/donate?hosted_button_id=MRXPPMCTDCYWC), or scan the QR code along side. You can make a gift by card or through PayPal, and if you are a taxpayer, you can add 25% to your donation through Gift Aid.

If you have any questions about the project, or want to pre-order Queen Ethelburga's Ale, you can email us at [geopaethas@gmail.com](mailto:geopaethas@gmail.com).



## Lyminge Festival - 21st June to 4th July



Thanks to the support of all our lovely parents and children, our **OUTSTANDING** Pre-School is currently full on most days with a waiting list in place for children wishing to start from **September 2021**.

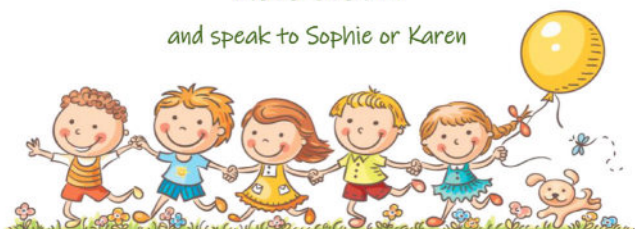
If you are looking for a local Pre-School for your child we would love to talk to you and tell you more about why we love what we do and why our families love us too!

Email: [lymingepreschool@googlegmail.com](mailto:lymingepreschool@googlegmail.com)

Or call

01303 863149

and speak to Sophie or Karen



The Lyminge Pre-School is a Registered Charity No. 1029226



## HELP NEEDED!

Our friendly and welcoming committee are in need of a new Treasurer in a voluntary role to help support us in the running of our Outstanding pre-school.

Ideally suited to someone with experience in budgeting, accounting or financial record keeping, it's a great opportunity to get more involved with our local pre-school community.

For more information please call 01303 863149 to speak to Karen or Sophie.

The Lyminge Pre-School is a Registered Charity No. 1029226



**Vegetable Growing Workshops** Our third 2021 workshop 'Potting and Planting' will be held on Sunday 18th April, between 14.30 and 16.30 via Zoom. To book your place please email: [thoughtfulfoodgroup@gmail.com](mailto:thoughtfulfoodgroup@gmail.com)



We are looking forward to a time when we can meet up again but hopefully, in the meantime, our members are enjoying the free hyacinth bulb which was delivered last year and should be flowering now.

All general enquiries to: [lymingegardeners@gmail.com](mailto:lymingegardeners@gmail.com)

In aid of LORD WHISKY SANCTUARY FUND

(Registered Charity 283483)

Park House Animal Sanctuary, Stelling Minnis CT4 6AN

Tel: 01303 862622 [www.lordwhisky.co.uk](http://www.lordwhisky.co.uk)

E: [lord.whisky@btinternet.com](mailto:lord.whisky@btinternet.com)



Our work can only continue  
with your support



We look forward to welcoming you back to our Tea Rooms in Stelling Minnis and the Hythe Charity Shop on Monday 12th April. There will be a full waitress service with outdoor dining on the lawns at the Tea Rooms.

We are hoping to hold a Boot Fair in June or July, restrictions permitting. However, due to age and health reasons, many of our loyal, long-serving helpers have had to hang up their boots. If we are to continue with these fundraising events, we need able-bodied people with lots of enthusiasm to come forward with new ideas to make these events even more enjoyable.

If this is you, please either drop us a line or email us at [lord.whisky@btinternet.com](mailto:lord.whisky@btinternet.com)

Thank You

## Coach & Horses



*Easter is fast approaching, so we are now taking orders for our Easter Treat Boxes!!* It will contain:

- 🍫 Chocolate mini egg nests
- 🍫 Creme egg "scotch egg"
- 🍫 Oreo brownie
- 🍫 Kinder Chocolate cookie
- 🍫 Mini egg Rocky Road
- 🍫 Filled half-Easter egg



All of this for just £18! So if your kids (or you, we don't judge!!) have a sweet tooth, be sure to book in!

We are opening on 12th April (garden only, seated social bubbles, taking bookings for tables) and will be still doing the take away menu until 16th May (or possibly longer).

**Emily and Fred**

**For bookings and any other help needed please phone 01303 901011 or check Facebook page 'Coach & Horses'**



*Lyminge  
Historical  
Society*



**HAPPY  
EASTER**

Watch the Notice Boards and the Lyminge Newsletter updates on when we can once again meet up – September is looking like the first opportunity. Stay safe and well.

**Lyminge Historical Society Committee**

**Lyminge a history can be purchased individually through the Premier Food Store**

Plus: purchase Parts 1-5 as a bundle for £22 or Parts 1-10 for £50\* To take advantage of the offer please call Daphne Andrews on 01303 862865. This bundle offer is not available from the shop.

\*Postage and packaging extra

## Garden Safari 2021

**Saturday 26th June - Sunday 27th June** (note change of date)

I expect you gardeners are glad to see the snow has gone; I know I certainly am. I had anemones in flower prior to the snow and they got buried, I thought I had lost them but a few days after the snow had gone they were in full bloom again. Mother Nature's wonderful.

I know we are still restricted with COVID regulations. However, I would like to hear from you if you would be interested in opening your garden this year, always assuming we are allowed to. The dates are 26th and 27th June. So, to those of you who have opened your gardens previously and to anyone who would like to open theirs for the first time, please give me a call to reserve your space or with any questions you may have.

**Contact: Ray Smith 01303 863856 or [rscalver@gmail.com](mailto:rscalver@gmail.com)**



# SPRINGRISE

## CANINE CARE SERVICES

### **\*NEW PRODUCT LAUNCH - "SPRING RISE" PET FOOD RANGE\***

**Spring Rise** is excited to inform you of the launch of "My Own Label" dog food range. Over the past few months, I have been working hard to find a complete dog food that provides highly nutritious, ethically sourced, human grade fresh ingredients and a diet that can combine all the benefits of both raw and dry food. It was exciting to discover these criteria could be met using Freshtrusion™ technology, whereby my dog food ingredients (freshly prepared meats, vegetables and botanicals) are gently cooked at 90°C at low pressure which keeps in the freshness and protects the proteins, allowing the food to retain its full flavour and provide a highly nutritious food for your pet!

**Spring Rise** dog food provides a range of delicious dishes including, duck with parsnip, beetroot, orange, asparagus and pumpkin for those dogs with digestive issues or trout, salmon, sweet potato and asparagus! There are also lots and lots of mouth-watering treats such as calming and dental functional treats, along with healthy training treats and a variety of natural treats from my **Doggie Deli** to name a few!!!

If you have any special dietary requests, please let me know and I will discuss your requirements with the nutritionist and hopefully find a meal to suit your dog!!

***.....and what's more, I can deliver to your door!!***

### **\*TOUCHANGO K9 TRAINING TOYS AND CANINE ENRICHMENT BOXES \***

**Touchango K9 training toys** are locally, handmade - bright, funky and durable, designed to encourage interactive play between you and your dog. The toys are handmade using carefully selected durable products making beautiful, super tough toys for the strongest of tugging dogs.... and all the balls used are non-toxic and free from nasty chemicals. Some of the toys are made with sheepskin or rabbit fur which is responsibly sourced within the UK. All can be purchased from **Spring Rise Pet Store**.

**Spring Rise Enrichment Boxes** are designed to "enrich/enhance the quality of your dog's daily life by stimulating their mental and physical capabilities". **Spring Rise Enrichment boxes** include a variety of items that are specifically designed to stimulate the six categories of enrichment: sensory, feeding, environment, toys/puzzles, social and training. Therefore, the contents will include any of the following: a puzzle toy, likimat, interactive toy, information handouts for basic fun training, how to engage your dog with interactive walks and/or booklets for activities such as Freework or Tellington TTouch along with ideas for a sensory garden. Also included in the box will be some natural treats that will involve chewing, training treats and the box and packing can be used as a snuffle box!

**Contact: Spring Rise Pet Store**

**Maple Cottage, Westfield Lane, Etchinghill, Folkestone, Kent. CT18 8BZ**

**Mobile: 07582407637 : Telephone: 01303 863090 : Email: [susannahparkin@gmail.com](mailto:susannahparkin@gmail.com)**

[www.caninecare.thespringrise.co.uk](http://www.caninecare.thespringrise.co.uk)



## Letters To The Editor.....

A big thank you to the kind people of Lyminge and surrounding area who came to my mother's assistance when she fell in Mayfield Road, firstly at the end of December and then unfortunately again at the beginning of March. You provided much needed practical help, support and kindness as well as coats and blankets which unfortunately we have not been able to return to you.

Mum is recovering from her falls, but it looks as if it will be long and slow.

Paul Hopper.

\$\$\$\$\$\$

### The Future for the NHS in Lyminge?

A note in the March issue from New Lyminge Surgery (under Etchinghill Update) is interesting and raises several questions.

The world agrees that COVID will be endemic for years to come and there will be other new viruses on the horizon. For many years, our one constant in Lyminge is the excellent and focussed local NHS service; a major benefit to the village. Two surgeries (with their own dispensaries) and a local pharmacy, support Lyminge and surrounding parishes. We have many shielding senior citizens, who are very careful and cautious people for whom travel in COVID times can be difficult.

Our annual flu vaccination campaign has been superb; therefore, I was surprised we had to travel to Hythe and Folkestone for our COVID vaccinations. The March issue note seems to suggest that Oaklands, Hythe, is the focus of our village NHS service which is to be distributed over seven other surgeries in a PCN (Primary Care Network). Clearly there are economies of scale that can be achieved by a diverse group, but surely that could be best created from our existing village resources.

Creating one NHS centre for the village would surely be the very best way of not only thanking all the local NHS services, it would also create a unique community hub.

I would value others opinions.

Sheamus J Maher

\$\$\$\$\$\$

### Hello everyone - we have just enjoyed a delicious roast Sunday lunch from the Coach and Horses.

We thoroughly enjoyed it. It was well cooked, hot and plenty of it - all the sauces and condiments were provided - and all for £15 per person.

It was delivered to the door at the time agreed by a friendly, smiley young man!

I would thoroughly recommend the food and the service. Thank you to the staff of the Coach and Horses.

Gwen and David Staveley.



LYMINGE

## EASTER EGG WINDOW TRAIL

2 - 16 April

### EASTER EGG WINDOW TRAIL

**Is your Easter Egg picture ready to be spotted?**

In a bid to inject some intrigue into everyone's local walks over the Easter holidays, we're inviting everyone to join in our Easter Egg Window Trail.

You can draw, paint or decorate your egg picture in any way you want. Then put it on display in your window where it can be easily spotted and enjoyed.

Do let us know if you're joining in! Email us a picture of your Easter Egg on display to:  
lymingeyouthaction@gmail.com.

Be sure to pop it in your window by Friday 2 April, ready for two weeks of Easter Egg hunting around the village.

**Who will find the most?!**



### SPRING PHOTO CONTEST

And for those young photographers out there, don't forget that entries to our Spring Photo Contest close on Saturday 10 April. Send your best photo of the first signs of Spring to lymingeyouthaction@gmail.com (along with a £3 donation via lymingepark.com) for a chance to win one of our Easter bundles. All proceeds will go towards the Tayne Field play park project.

All the best,  
*Lyminge Youth Action*



## Footpath Problems? Request for Feedback

Many of us have been walking for exercise during lockdown and we have found that a lot of the footpaths have problems. There are gates missing, slippery slopes, stiles almost impossible to negotiate or broken, and much more.

I am committed to reviewing the situation, with the recommendations for improvements going to the Parish Council. Some of the local paths were last surveyed in 2004, and it's high time they are brought back to a usable standard.

Please send me any problems you have encountered on footpaths around the area. Details should include the number of the footpath (e.g. HE46) or its location (e.g. the path running from Sibton Park to Brady Road) and sent to Gillian at: 07903150099 or page3lym@gmail.com



You may have heard of  
**The Great Big Art Exhibition**

which started on 28th January and runs to 7th May 2021. It's a nationwide project designed to get the whole country making and exhibiting art. It's a great way for people to explore their creative side at home, from first-timers to professional artists. You can display your art in your front garden, in a window, from a balcony or on your front door to help create one Great Big Art Exhibition ! It is being promoted by various well known artists, e.g sculptor Antony Gormley, who set a different theme each fortnight. You may even have decided to join in with this event yourself and have planned a piece of art to display in your front window or front garden for the rest of the world to enjoy as it goes past !

Now The Lyminge Association would like to extend this by adding the

**GREAT LYMINGE ART EXHIBITION**

to take place during the



which will run from **Monday 21st June to Sunday 4th July**

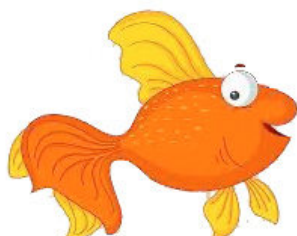
If you have a piece of art - a painting, a sculpture, a vast installation made from recycled rubbish - any theme - or if you have already made something for the original Great Big Art Exhibition, can you please keep it for our own special Lyminge event. All 'artists' from the newsletter catchment area are invited to join in as well ! You could even produce an Anglo-Saxon (or any other) scarecrow as your piece of art, that would be great too.

No judging - it is all just for fun, and many artworks will have the opportunity to appear in future editions of The Lyminge Newsletter !!

If you have not yet produced an artwork, NOW is the time to think about it as you have **PLENTY OF TIME** until the start of the **Lyminge Festival**.

*Let's have art all over the villages !!*

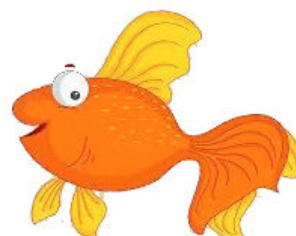
*See next month's Lyminge Newsletter  
for more details and about how to register*



**Free Goldfish to Good Homes**

We have accidentally managed to breed lots of goldfish - more than we want to keep in our pond. We would therefore like to offer them free of charge to good homes if anyone in the village has space in their fish ponds.

Please contact Kate: [kakellett@yahoo.com](mailto:kakellett@yahoo.com) or 07967 203501





# ETCHINGHILL RESIDENTS' ASSOCIATION



FRIDAY  
23<sup>RD</sup> APRIL 7 PM



*PLEASE SUPPORT THE  
ERA!*

WE ARE HOLDING A LIGHT-HEARTED ST GEORGE'S DAY QUIZ,  
USING ZOOM, TO RAISE OPERATING FUNDS & TO CONNECT WITH  
FRIENDS & NEIGHBOURS

ENTRY IS £3pp - FREE FOR UNDER 16s OR FULL TIME STUDENTS

THERE WILL BE 5 ROUNDS OF FUN THEMED QUESTIONS

£5 AMAZON GIFT VOUCHER FOR 1<sup>ST</sup> PLACE!

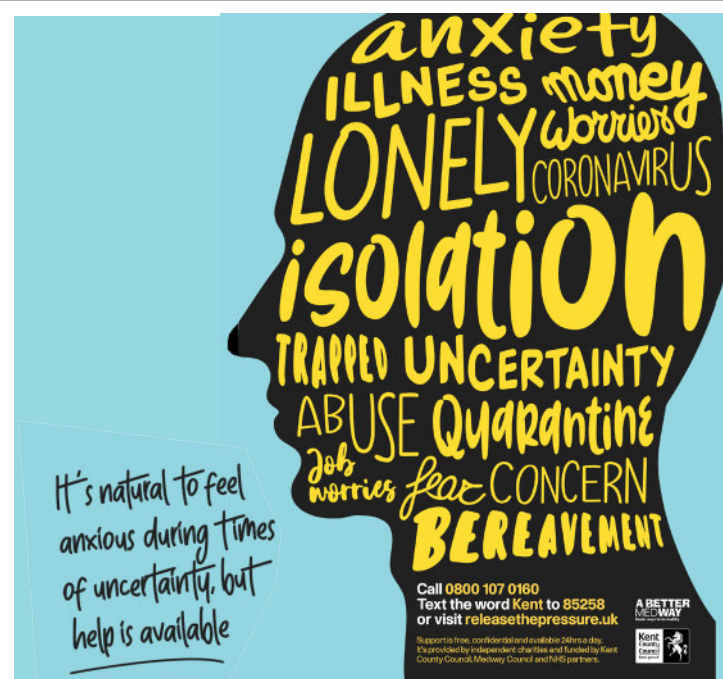
To participate, or to make a donation, please email Dave -  
dmccombe1@gmail.com or call 07939 076617  
for more information

*Entries close 21st April*



## Fifth Trust Update - [www.fifthtrust.co.uk](http://www.fifthtrust.co.uk)

We are delighted that we will be welcoming students back in person on 6th April, with a restricted service under Covid-19 safety measures. The garden centre is now open seven days a week (11am-3pm Mon to Fri and 10am-4pm weekends). On 29th March we will start up our hot food and drink take-away again and we are hopeful that the café will be allowed to open for an outside service from 12th April. We are looking forward to seeing everyone again!



## Elham Village Hall

Thinking of marrying in Autumn 2021 or Spring/Summer 2022

Our venue is licensed to hold wedding ceremonies and Civil Partnerships either outside in our newly built gazebo with stunning countryside surroundings or inside if preferred.

Contact our bookings co-ordinator for details:

**bookingsecretary.evh@gmail.com or  
07746790618**



## Lyminge Anglo - Saxon Festival 21st June - 4th July



All manner of different events to appeal to everybody - Øst Centingas, cream teas, art exhibition (see P10), accompanied walks, brass band concert, beer festival, medieval banquet, beer brewed for the occasion, etc.

**MAKE SURE YOU HAVE  
THE DATE IN YOUR DIARY!!**



We have space available for Lengths/Improvers for Expanded Learn to Swim Scheme (Swim England LTS Level 4+)

*Due to the expansion of our successful (nationally accredited) Swimschool at Hythe Aqua we currently have immediate vacancies for lengths and intermediate level swimmers*

**Club Secretary:** 01303 862353

family.parris13@btinternet.com [www.hytheaqua.org.uk](http://www.hytheaqua.org.uk)

Editor: [pb@pbarnes20.plus.com](mailto:pb@pbarnes20.plus.com)

## Lyminge Friends - April 2021

**No meetings or visits planned until the summer at the earliest, due to Covid19. We will advise when the situation changes.**

We hope everyone is well and living the best life they can under the circumstances. Keep well and stay safe.

**Meetings are 10.30am - 12.30pm in the Rigden Room of the Tayne Centre.** Entry for 2021 is £3.00 which includes light refreshments. We are a friendly social group and welcome new members so just drop into one of our meetings, or, if you'd like to talk to one of us first, please call 863500.



## TAYNE CENTRE



In anticipation of the Government lifting restrictions, it is hoped that activities might be able to resume from the middle of May.



Please be aware that anyone wishing to use our premises will need to present a Risk Assessment, which will have to be verified before a meeting is allowed.

So, please apply as soon as possible.



**Community  
Support Hub**

## AREA AMBASSADORS and THANK YOU

Age UK Hythe and Lyminge is looking to recruit Area Ambassadors across our areas. The role's objectives are to represent Age UK H&L within the local community, promote the Charity's work, identify clients who may benefit from additional support within your particular ward, and support Age UK H&L with the development of services for the Community by acting as the voice of the area.

Interested?

For a full role description with an outline of tasks and activities, please call us, or email [kay.stroud@ageukhl.org.uk](mailto:kay.stroud@ageukhl.org.uk).

**SSSSSS**

We'd like to say another huge thank you to all our volunteers for their work to support both the Charity and those living locally who need a hand. We are now approaching a year of living with Covid, and what a lot has changed in that year- we simply could not have done as much as we have without their help.

We continue to offer the following services during the Covid-19 lockdown in April 2021.

- Home Meal Delivery
- Bespoke Shopping
- Prescription Delivery
- Befriending calls
- Independent Living – support with jobs at home which may have become difficult
- Laundry Service
- IT support
- Dementia Support

Please call us on 01303 269602 for further information





# LYMINGE PARISH COUNCIL

## April 2021 Newsletter

*Forthcoming Council and Committee Agendas are displayed on the Council notice boards in Lyminge Station Road car park, the Rhodes Minnis bus shelter and the entrance to the Village Hall car park, Etchinghill. Agendas and minutes are published on the Council's website [www.lymingepc.kentparishes.gov.uk](http://www.lymingepc.kentparishes.gov.uk) and Facebook page. We invite you to read the minutes online or on the noticeboards which may provide the information you are seeking regarding a particular item, but correspondence is always welcome from parishioners and can be sent to the Clerk at the addresses given on the next page.*

### ARCHAEOLOGICAL INVESTIGATION ON THE GOLF COURSE BY NEW LYMINGE SURGERY

Many readers will already be aware that before Christmas Pentland Homes engaged Wessex Archaeology to undertake evaluation of the archaeological potential of the proposed development site on the golf course. This revealed large amounts of evidence right across the site, including ditches, pits, and a possible structure, as well as pottery and bone. So over recent weeks, a detailed investigation has been underway to strip and explore the whole area that will be affected by the proposed development. This latest work has been undertaken before planning consent has been granted, but in the knowledge that the Senior Archaeological Officer at KCC had already advised that such an investigation should be made a condition of planning consent being given.

There is still quite a lot of work to do, and analysis of the finds is required to come up with a full sequence. However, material has been found indicating around four thousand years of activity from the Bronze Age through to the Victorian period. Pottery and metalwork has been found, and organic samples have been taken to allow carbon dating that hopefully will give some reasonably precise dates. The remains of structures appear to be part of a late Iron Age farmstead, dating to the period around the time of the Roman Conquest in the 1st Century AD.



So far, there is no evidence of Anglo-Saxon occupation, or of any burials, so it would appear that the

cemetery, discovered near to New Lyminge Surgery in 1885 when the railway was built, did not extend south of the East Brook.

Gabor Thomas, who has led the archaeological excavations around the village in recent years is in touch with the team working on the Golf Course site. We have every confidence that this will allow the results of this latest dig to be integrated into the developing picture of the history of our community. Video of the excavation is being captured and we have been promised a talk about the results by the director of the dig later in the year when more analysis has been carried out.

*Rob Baldwin, Councillor*

**ANNUAL PARISH MEETING** Last year council were unable to hold the Annual Parish Meeting of all electors, due to the pandemic. This year it has been scheduled for Wednesday 26th May at 7.30pm in Lyminge Village Hall, however, the ongoing Covid-19 situation has meant that government guidance on this annual meeting is still being considered, as are the implications of social distancing. The council will make a decision regarding the meeting imminently and will let the community know as soon as possible.



## **DISABLED ACCESS TO SCOUT HUT**

It was agreed at the February council meeting that there were no objections to the proposed works to provide disabled access to the scout hut which stands on council land. The council is fully supportive of the planned work which will enhance this useful facility. Amongst other functions the hut is also now used as a polling station.

## **DEFIBRILLATOR STATION ROAD CAR PARK, LYMINGE**



We are pleased to confirm that the defibrillator has been refurbished and is now back in place in the Station Road Car Park.

**TAYNE FIELD GOAL NET** The goal net on Tayne Field has been moved and we request ball games are not played against the wall of the Coach & Horses outbuilding. The fixing of the roof slates in a traditional manner means that they are prone to come loose if the building is knocked and can be easily damaged

**PHONE BOX LIBRARIES** Council would like to express their thanks to Mr & Mrs Risby of White House Lane, Rhodes Minnis who have agreed to take over the management of the Phone Box Library in Rhodes Minnis from Mike Packham who has moved away.



The phone box in Woodland Road, Lyminge, has recently been cleared as too many books were being left during lockdown.

If the shelves are full, please **do not** leave further donations on the floor as they get ruined and also lead to the rusting of the phone box walls. The phone box in Station Road, Lyminge, will open once the weather allows refurbishment to be completed.

## **PARKING ISSUES ON CANTERBURY RD AND OUTSIDE LYMINGE FOOD AND WINE**

The council have been in discussions with both KCC Highways and FHDC for some time now regarding the parking issues along Canterbury Road and in the area of Lyminge Food and Wine. FHDC are proposing double yellow lines along part of Canterbury Road to complement the existing restricted parking outside the store/PO. We would urge you to see FHDC's proposal notice on page 11 of this newsletter. They welcome residents' feedback, although there is a short deadline of Friday 9th April.

## **NEW PARISH COUNCIL WEBSITE**

A new website is under construction to comply with the latest accessibility regulations and we hope to see it go live very shortly.

### **APRIL COUNCIL MEETING DATES:**

Finance and Administration - Monday 12<sup>th</sup> April at 7.00pm via Zoom

Full Council – Monday 26<sup>th</sup> April at 7.30pm via Zoom.

Members of the public are welcome to attend the virtual meetings. There will be a specific opportunity to comment upon items on the agenda or raise other matters. Anyone who wishes to attend should contact the clerk for details of how to join the meeting.

### **Cherri Norman, Clerk and Responsible Financial Officer**

Correspondence Address: Lyminge Parish Council, PO Box 1159, Canterbury, Kent CT1 9PR

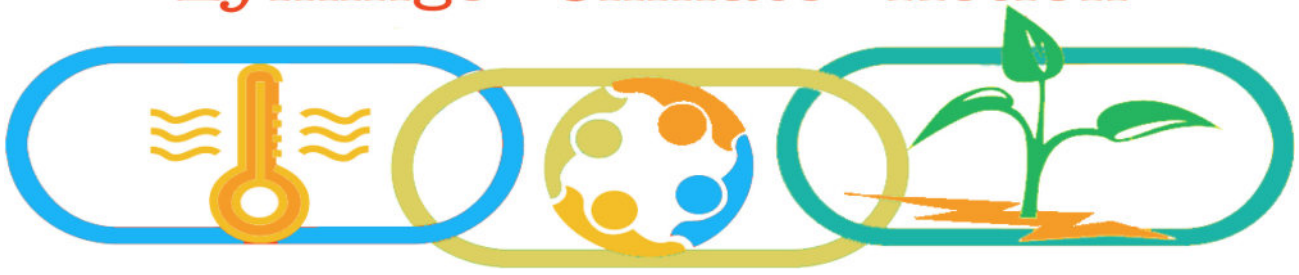
Telephone: 07715 221 705 Email: [lymingepc@btinternet.com](mailto:lymingepc@btinternet.com)

[www.lymingepc.kentparishes.gov.uk](http://www.lymingepc.kentparishes.gov.uk)

[www.facebook.com Lyminge Parish Council](https://www.facebook.com/LymingeParishCouncil)



# Lyminge Climate Action



## Thoughtful Food....

...is a group of local volunteers looking at our food, and how this impacts climate change. Our aims are to support people to produce more of their own food, and to shop locally, sourcing seasonal produce. We also run a community allotment in Lyminge and welcome new members.

Contact: [thoughtfulfoodgroup@gmail.com](mailto:thoughtfulfoodgroup@gmail.com) or on Facebook and Instagram @thoughtfulfoodgroup

We are meeting on the first Tuesday evening of the month via Zoom - please email if you would like to attend.

## A date for your diary... Pick up a Plant is back!

- Saturday 15th May
- 10:00 – 13:00
- Outside Stanbury Lodge, Church Road

Following on from the success of last year's event, we will again be offering our excess plants to others. If you have extra seedlings, please donate before 10am on the day. If you've missed the boat with starting seeds this year, pop down and pick something up to grow on. We are looking forward to seeing you! Please bring your own bag and adhere to social distancing requirements.

## What to do now...April

For those of you growing your own veg this year, here are this month's tips of what you can be doing in your gardens...

### Sow undercover –

- as for March (except its getting late for celeriac, sow asap), leeks, leaf beet, beetroot (all varieties), chard at month's end, tomatoes for outdoor growing.
- With warmth and around mid-month, cucumber, courgette, squash inc. pumpkin, sweetcorn

### Sow outside –

- all potatoes, broad beans, lettuce, spinach, peas, salad onion, early and autumn brassicas, parsley, leeks, leaf beet, carrots

## Companions and Partners

Some ideas from our latest workshop, Seeds and Sowing, held in March...

- Instead of doing block planting of your vegetables, try interspersing them with herbs and flowers that will help deter pests and encourage pollinators.
- Let's return to the mixed planting and sowing of the medieval monastic gardens and the cottage gardens which were so present pre-World War 2 and the onslaught of intensive farming and use of insecticides.
- Some flower examples: – french marigolds, calendula, sweet peas, sunflowers, nasturtiums, nicotiana, alliums, asters, buddleja, cosmos.
- Flowers for early pollinators: snowdrops, aconites, hellebores, crocus, cerinthe, dandelions.
- Herbs for helping: (The list is long! Refer to Jekka McVicar's books on herbs). In the meantime – caraway, lavender, rosemary, basil; hyssop, thyme, oregano, all the sage family.
- We also looked at which vegetables are good or bad partners! Here are just a few to be going on with. For example, don't grow your beans next to the onions and garlic but do grow your tomatoes with french marigolds and basil! Also sweetcorn with your beans and pumpkins and parsley.

Happy gardening and here's hoping we will see more of each other out and about round the village. We will be sowing and planting at the community allotment so come along and say hello and get involved – the more the merrier.

# OUR WILD ACRE PROJECT



Dear Residents

**Lyminge Climate Action** has joined up with the **Kentish Stour Countryside Partnership** to bring you the **Lyminge Parish Our Wild Acre Project**. This is a wildlife challenge where wildlife and people are equal winners. The aim of this challenge is to create a new acre of wildlife-friendly habitats across the Parish.

Our community has shown a fantastic ability to come together over this time of adversity during the coronavirus outbreak. It's time to build on that feel-good factor and the 'over the fence' relationships that have motivated so many of us.

**To meet this goal**, we are asking you to leave a small area of your garden uncut and untouched through the growing season (March - August). This would provide a fantastic refuge for wildlife. Ground dwelling insects would thrive, while amphibians, reptiles, mammals and birds will all prosper from this vast larder available to them, and we would be surrounded by nature in our very own back gardens.

**How are we going to do it?** An acre of land is 4050m<sup>2</sup>. So for example if 450 households volunteer to leave on average an area of 9m<sup>2</sup> (eg. 3m by 3m, or 4 paces by 4 paces approx) untouched through the spring and summer, we would achieve our goal of a **'WILD ACRE'**.

It could be helped by creating an intriguing bugland that children would enjoy exploring and provide a seed feast to attract all the songbirds we love to watch and listen to. Areas left in this style of management would develop a greater diversity of plants that in turn would support the butterflies and all manner of different animals.

Therefore, this little pocket of land set aside for nature will go a long way to reversing the alarming decline in plants and animals that they are currently facing. With a 70% decrease in insects over the last 50 years, we need to work together to reverse this worrying trend and it is hoped that this initiative will give you an opportunity to help support this drive.

It is appreciated all homes are different – some with large plots, some with balcony gardens – they are all different and so a strip, a foot or two wide, along one boundary or a window box would suffice while others might leave a larger corner to nature. Whatever space you have, speak with us and we can help you to set aside a spot for wildlife.

**This action can lead to us creating a Wild Acre, one from which we will all see and feel the benefits.**

To register, please use this link [forms.gle/VrVXKMDQM6VToXhUA](https://forms.gle/VrVXKMDQM6VToXhUA). This is also available through the Lyminge Climate Action Facebook page or by emailing [lymingeclimateaction@gmail.com](mailto:lymingeclimateaction@gmail.com) or telephone 863426





**The Kent County Council**  
**(The District of Folkestone & Hythe, various Roads)**  
**(Restrictions and Prohibitions of Waiting, Loading and Unloading)**  
**Order 2021 (Amendment No 21).**

Notice is hereby given that KENT COUNTY COUNCIL has made the above Order under sections 1(1), 2(1) to (3), 3(2), 4(1) and (2), 32(1), 35(1), 45, 46, 49 and 53 of the Road Traffic Regulation Act 1984, and of all other enabling powers, and after consultation with the chief officer of police in accordance with Part III of Schedule 9 to the Act:

**PROHIBITION OF WAITING AT ANY TIME**

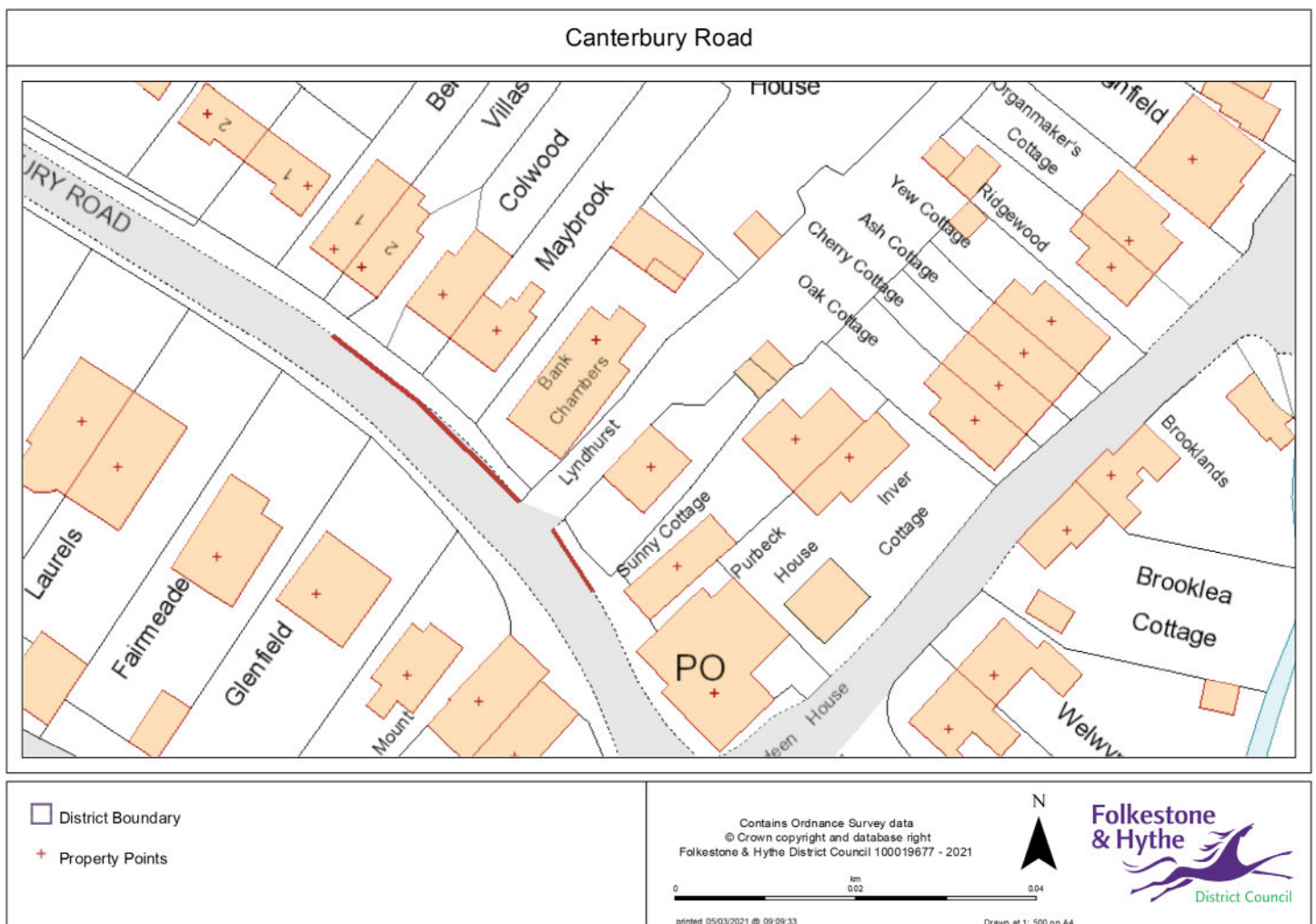
**Canterbury Road, Lyminge: North east side from 2 Berkeley Villas for 45.5 metres in a south easterly direction;**

Full details are contained in the draft Order which, together with the relevant drawings, a copy of any orders which will be amended by the proposed Order, and a statement of the Council's reasons for proposing to make the Order may be examined at The Council Offices, Castle Hill Avenue, Folkestone or on our website.

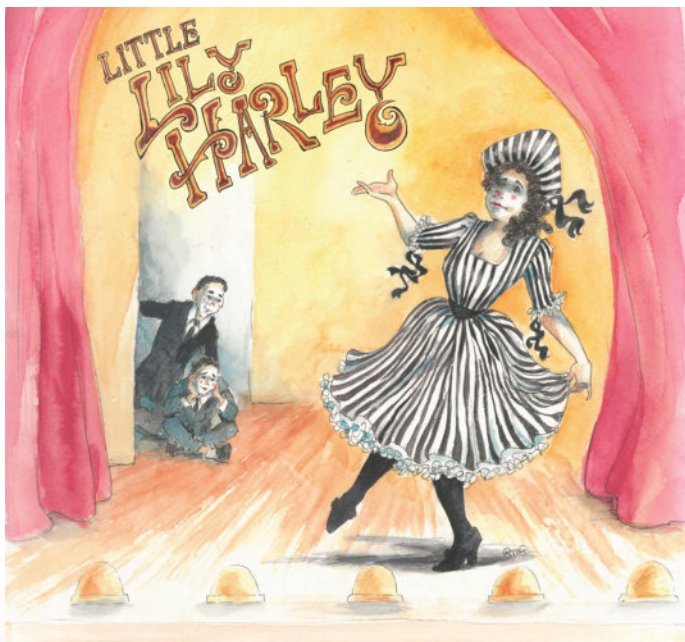
If you have any questions concerning the Order or require further information please contact Folkestone & Hythe District Council (Parking Services) Civic Centre, Castle Hill Avenue, Folkestone, CT20 2QY.

If you wish to make an objection or comment about the proposed Order, you must write to Folkestone & Hythe District Council (Traffic Orders), Civic Centre, Castle Hill Avenue, Folkestone, CT20 2QY or email [traffic.orders@folkestone-hythe.gov.uk](mailto:traffic.orders@folkestone-hythe.gov.uk). Your objection must specify the grounds on which it is made. For your objection or comments to be considered they must reach us by 5pm on Friday 9th April 2021. For legal reasons we cannot accept any objection or comment over the phone or in person.

This Notice is published by Folkestone & Hythe District Council on behalf of Kent County Council Highways and Transportation, County Hall, Maidstone, ME14 1XQ (part of Kent County Council).



**From Editor: A further explanation of this notice and plan can be found on P14 in the Lyminge Parish Council pages.**



## Outdoor Theatre in Lyminge!

At last! Something to get excited about! The wonderful Rude Mechanicals are planning to perform on **Tayne Field** on **Sunday 25th July at 7.30pm** (subject to Lyminge Parish Council approval).

It will be something to give us a good laugh and raise our spirits – and we all need that!

The play will be **'Little Lily Harley'**, postponed from last year, and is about Charlie Chaplin's childhood in Lambeth. With a drunken but charismatic actor father who was rarely around & a beautiful young actress of a mother who had three children by different fathers, he had to learn along-side his big brother Sydney how to survive a very precarious existence. Sometimes fostered by other people, sometimes in a school for destitute children, sometimes separated from Sydney & sometimes living on the street (as a child!), he nevertheless managed to triumph over all this to become arguably the greatest film actor ever.

Pete Talbot, the director, says, "When I wrote the play in 2019, I could not have known how apt it would be for today. The message of hope, triumph over pain, through the imagination and laughter, is really important for today because people are desperate to see theatre and escape for a while. That is why we must do it."

Tickets are available online from The Rudes website from 1st March. Because of social distancing spaces will be limited, so **BOOK EARLY!** You will get your money back if you can't subsequently come. Prices will favour people booking in bubbles of four or more. Go to their website for details. It will make you cry, release all that tension and laugh out loud. Full of music hall and silent movie magic with a great team of professional actor/musicians! Featuring Chaplin's powerful classic music, 'Smile! The company say that the date might be delayed because we don't know how the rules may change but that it is 'highly likely' to happen. Watch the company's website - [therudemechanicaltheatre.co.uk](http://therudemechanicaltheatre.co.uk) – for changes, or speak to Mike Chisnall on 01303-862743 or ring The Rudes on 01323-5012560, or email them at [therudes1948@gmail.com](mailto:therudes1948@gmail.com).

## Lockdown

(with apologies to Thomas Hardy)

And now among this little realm  
As far as I can see  
As far as I'm allowed to roam  
Is all the world to me.  
We used to rove much farther then  
Beyond that shining brook  
Within the hollow of the glen  
I yearn, but may only look.

You walked ahead before me then  
Your coat of blue and grey  
And turned to glance upon me when  
Joy prompted you to say:  
'D'you see yon thrush upon that bough?  
D'you hear his thrilling song?'  
That song, like you, has faded now  
Your smile and he are gone.

Your face upon my inward eye  
Looks grim and bears a frown  
Oh hard it is to see you gone!  
And hard to be locked down!  
That elm is now my boundary west  
The east that yellow gorse  
The park for exercise is best,  
And then Waitrose of course.

Joss Williams  
March 2021

## Coming to a store near you!!

(Please read before 12noon 1 April. With thanks to Gerry Darnley)







## Lyminge Pre-School



Lyminge Preschool provides quality Early Years education and day care all year round for children aged 2-5 years. The Pre-School is run by a team of qualified, highly experienced and dedicated practitioners.

Lyminge Pre-school has a safe, stimulating and fun environment that provides support and challenge for all of the children's individual needs. We welcome all children from the age of two from all surrounding areas.

To arrange to meet the team, please call 01303 863149 (day) or email [lymingepreschool@gmail.com](mailto:lymingepreschool@gmail.com) and visit our website [www.lymingepreschool.org.uk](http://www.lymingepreschool.org.uk)



**Anna Lindley**  
(RVN, Dip.A.Physio)

**I offer physiotherapy assessment and treatment of dogs, cats and small animals**

I treat your pet in the comfort of their own home

I use a combination of manual therapy, laser, ultrasound therapy, TENS, Kinesiology tape and exercises

to rehabilitate your pet depending on your pet's needs.

Physiotherapy can help with arthritis and the ageing pet, post operative orthopaedic surgery, neurological, spinal conditions and many more conditions

I am fully insured with over 15 yrs experience working with animals. I am a member of the International Association of Animal Therapists (IAAT).

**For more information please visit my website:**  
[annasanimalphysio.co.uk](http://annasanimalphysio.co.uk) or feel free to contact me on  
**07944 606453 or [anna@annasanimalphysio.co.uk](mailto:anna@annasanimalphysio.co.uk)**

## Etchinghill Baby & Toddler Group

We are a friendly toddler group, which caters for babies and children from 0 to school age. Crafts, messy play, trikes, toys and a singing session are included each week. In dry weather there is also outside access for the children to play. We meet on Wednesdays between 10am-12noon at Etchinghill Village Hall. We charge £2 per family, 1st session is free. Tea/coffee and healthy snacks are provided.

If you have any queries please contact:

**Cait Byrne - 07850757571**

## SNIPPERS & CLIPPERS UNISEX HAIR SALON

APPOINTMENT NOT ALWAYS NEEDED  
WEDDINGS & SPECIAL OCCASIONS  
SHELLAC NAILS  
GENTS WELCOME  
FREE WIFI

4 Station Road, Lyminge  
Folkestone  
Kent, CT18 8HP  
01303 647 222

[info@snippersandclippers.co.uk](mailto:info@snippersandclippers.co.uk)

Find us on  
Google+

Find us on:  
facebook



[www.tamsinsteelart.com](http://www.tamsinsteelart.com)

## Tamsin Steel Art PET PORTRAITS

Beautiful and unique  
coloured pencil drawings  
to be treasured.  
A special gift  
for yourself, family  
and friends.

Enquiries [tamsinsteelart@gmail.com](mailto:tamsinsteelart@gmail.com)



## BADGERS BRIDGE NURSERY

*" Bridging the indoor and outdoor learning environment for children in their Early Years"*

Badgers Bridge is set in the idyllic countryside of Postling, just outside Lyminge. We are a small and friendly Preschool who blend the Montessori principles with the outdoor learning ethos.

We were awarded Outstanding by Ofsted in 2018 in every area. This is a real achievement and we are really proud of the staff who work tirelessly to provide a stimulating and caring environment for the children of Badgers Bridge.

The inspector was particularly impressed with our Forest School. *"Children enjoy limitless opportunities to explore, investigate and work together in the natural woodland environment. Staff skilfully inspire children to develop a significant understanding of the world in which they live".*

*".....exemplary relationships between staff provide excellent role models for children and promote high standards of behaviour. Children make outstanding progress during their time at the nursery".*

We are filling up fast and only have 3 spaces available. So please call or email us:

Email : [badgersbridge@gmail.co.uk](mailto:badgersbridge@gmail.co.uk)

Website : [www.badgersbridge.co.uk](http://www.badgersbridge.co.uk)

Tel : 01303 862951

**Postling Village Hall, The Street, Postling CT21 4EU**

Ofsted Registered : 395128

Companies House Reg : OC375571





## PIANO LESSONS FOR ADULTS

Have you always wanted to learn to play the piano but have lacked the opportunity, or faith in your own ability? Did you learn as a child and now regret having given it up? I specialise in teaching adults and have developed a method which will enable you to progress quickly and with great enjoyment.

**Please contact: Lise Cribbin, Bridge 01227 637709**

## Rhodes Minnis Cat Sanctuary



REHOMING & BOARDING CATTERY

- Our Sanctuary takes in and rehomes 250 unwanted cats and kittens each year. A variety of cats are always available to suitable homes.
- 5\* Boarding Cattery under 2018 regulations
- We are open to visitors every day from 10-1 & 2-4. No appointment necessary.

T: 01303 862 243  
E: [rminniscats@gmail.com](mailto:rminniscats@gmail.com)  
Facebook: @rhodesminniscats  
[www.rhodesminnis.co.uk](http://www.rhodesminnis.co.uk)

Seathwaite, Green Lane, Rhodes Minnis, Kent. CT4 6XU  
Reg. Charity No. 262245



APX PROJECT  
MANAGEMENT

From design to build, we use trusted quality trade professionals along with reliable suppliers to ensure budgets are met, with high standards maintained.

If you're looking to -

- Extend you property
- Carry out an external or internal refurbishment
- Convert an existing building into a new dwelling

Please contact: [paul@apxprojectmanagement.co.uk](mailto:paul@apxprojectmanagement.co.uk) 07487 364155



## Snippers and Clippers Barbers - Lyminge

Please call Richard to book an appointment

01303 647 333

07522 494 969

4 Station Road, Lyminge CT18 8HP

Follow us on facebook for offers

## Elham Dog Training Club

All round dog training service for you and your dogs, available from before you even bring your puppy home, in the comfort of your home and continuing for the first four weeks of your new bundle of joy coming home! Fully insured and Kennel Club Registered

Classes at Elham Village Hall and 1-2-1 sessions available.

Contact us for more information and to book a space on a course:

**Lyn Fagg 01303 862820 or Sue Coulstock 07542 727326**

Email: [elhamdtc@gmail.com](mailto:elhamdtc@gmail.com)

Editor: [pb@pbarnes20.plus.com](mailto:pb@pbarnes20.plus.com)

## Andy Mannering Flooring

SPECIALISING IN AMTICO AND KARNDLEAN  
LUXURY VINYL TILES

- Also safety flooring, rubber flooring, etc.
- Commercial and domestic work undertaken
- No job too small
- Free estimates and advice given
- Over 35 years experience
- Fully insured



**Telephone:** 0797 434 7248 or 01303 863095

**Email:** [info@andymanneringflooring.com](mailto:info@andymanneringflooring.com)

Please visit my website for further information and feedback

**[www.andymanneringflooring.com](http://www.andymanneringflooring.com)**



## Fed up of dusting and ironing?

We can help you with your cleaning and ironing needs!

We are a reliable, local cleaning and ironing company based in Lyminge.

References available and Fully Insured.

For further information, please call:

**07565 768243**

## Lyminge Baby and Toddler Group

Due to Covid-19 the toddler group is not currently running.

If you have any questions please contact

**Sarah on 07984 939220**

## Park House Sanctuary Boarding Kennels & Cattery

Park House, Stelling Minnis

CT4 6AN

Brick-Built Heated Kennels

Daily Walks ~ Reasonable

Rates Dogs must be fully  
inoculated

Heated Cat Chalets

Quiet Area Inspection Invited.

To book or for further

information, call

01303 862622

or email

[lord.whisky@btinternet.com](mailto:lord.whisky@btinternet.com)

[www.lordwhisky.co.uk](http://www.lordwhisky.co.uk)

**matchams**  
plumbing & heating

Gas & Oil Boiler Service  
Repair  
Installation

For fast, efficient service  
contact us:

**01303 277254**

[service@matchams.co.uk](mailto:service@matchams.co.uk)

248 Cheriton Road,  
Folkestone CT19 4DN



Tel: 01303 863737



# The Lyminge Association

We're here to support and develop our community!!

## Contacts:

**Chair:** Peter Barnes 863737  
pb@pbarnes20.plus.com  
**Vice Chair:** Adrian Willcox 862699  
adrian.willcox@virgin.net  
**Treasurer:** Janet Fry 863177  
janet@rhodesminnis.org.uk

**Committee Members:** Nancy Benham, Marian Chubb, Richard Chubb, Fran Davis, Dave Hunt-Cooke, Gillian Heywood, Sylvia Norris, Derek Smith, Ray Smith, Penny Stephens

**Newsletter:** As for Peter Barnes above

## ETCHINGHILL VILLAGE HALL HIRE FEES

The next time you are thinking of holding a function why not try Etchinghill Village Hall, which holds the highest Hallmark accreditation level (Hallmark 3), with its excellent facilities, including ample parking space.

The standard hire charge for the main hall and kitchen are:

Weekdays £11.00 per hour

Saturdays £13.00 per hour

Sundays £13.00 per hour

During the winter months (1 November to 31 March) a Winter Supplement of £1.00 per hour is added to the above rates.

Special rates apply for weddings and all day events with discounts on the above rates applying to Etchinghill residents and regular hirers.

The use of a separate Committee Room is also available.

For all bookings or enquiries please contact:

**The Duty Manager on 07514 758936**

## bus times

for buses from Lyminge **The Sidings** to  
Folkestone town centre via Etchinghill & Cheriton High Street

**MONDAYS TO SATURDAYS** except Bank Holidays

There are route 17 buses at 0705 (not Saturdays), 0749, 0909, 0934 (not Saturdays), 1004, 1034, 1104, 1204, 1304, 1404, 1514, 1614, 1619 (schooldays only), 1654 (schooldays only), 1719, 1749, 1834, 1929, 2113 and 2313.

There are also route 18 buses to Sandling Station & Hythe - for times see our website or call the number below.

**SUNDAYS & BANK HOLIDAYS**

There are route 17 buses at 1032, 1302, 1532 and 1802.

for buses from Lyminge **Wesley Terrace** to  
Canterbury city centre via Elham, Barham & Bridge

**MONDAYS TO SATURDAYS** except Bank Holidays

There are route 17 buses at 0727 (schooldays only), 0732, 0752, 0903, 0938, 1028, 1128, 1235 (1228 on Saturdays), 1335, 1443, 1608 (1613 on Saturdays), 1703, 1803, 2001 and 2201.

There are also route 18 buses to Canterbury via Stelling Minnis and Bosingham - for times see our website or call the number below.

**SUNDAYS & BANK HOLIDAYS**

There are route 17 buses at 0903, 1133, 1403, and 1633.

These bus times will operate from 28 October 2018.



03456 00 22 99 @StagecoachSE  
southeast.enquiries@stagecoachbus.com  
stagecoachbus.com

Editor: pb@pbarnes20.plus.com

## Lyminge Village Hall

Registered charity 281845

**Large, refurbished, flexible hall with great facilities**

From Theatre productions to Weddings, Craft Fayres to Children's parties - we've got it all covered!

**Capacity:** 200 people dancing / audience seating,  
100 for table seating, 50 or less for meetings

**Well equipped:** stage, kitchen, small rooms, ample parking facilities, disabled access

**Access to:** playground, skate park, large playing field

**Situation:** Rolling hills behind and the Church to the front.

Find out how we can help you with your next event:

**Booking Line: 0749 7625 741**

**Email: lvh.bookings@outlook.com**



Guideline prices



**MAIN HALL HIRE ~ Fri, Sat PM £65**

**SMALL ROOM ~ £20**

**EXCLUSIVE ALL HALL ~ £320**

## Rhodes Minnis Village Hall

Charity No.800345

Rhodes Minnis Village Hall is located 2kms (1¼miles) from Lyminge and just off Longage Hill and Whitehorse Lane in Chapel Lane

The hall, which holds Hallmark accreditation, is ideal for children's parties, band practice, quizzes, meetings, wedding receptions, fundraising events and much more. It has a fully equipped kitchen.

### Rates

Mon to Fri £18 per session £48 all day

Sat & Sun £23 per session

£33 for evening session and £69 all day

### Sessions

AM session 08.30 - 12.30

PM session 13.30 - 17.30

Evening session 18.00 - 23.45

Separate rates for Bank Holidays and New Year and special rates for regular users.

For all bookings and enquiries please contact:

**Mick & Dorothy Athow 01303 862616 e-mail: mick@athow.co.uk**

## TAYNE CENTRE HALL HIRE

*Previously known as the Lyminge Methodist Church Hall*

### Clayson Hall

1 October to 31 May (including heating) £9.50 per hour :

£34.00 per 4 hour session : £66.00 full day

1 June to 30 September

£7 per hour : £25.00 per 4 hour session : £48.00 full day

**Rigden Room (Parlour) with heating, if required\***

£7 per hour all year (\*electric - over heaters).

**Burren Room** - storage only

### Overnight Stays

1 June to 30 September £50; 1 October to 31 May £60

For any enquiries please call **07971 722 401**



## Lyminge Library Opening Times

Monday 10am - 2pm

Tuesday 12noon - 5pm

Wednesday 10am - 2pm

Thursday 10am - 5pm

Friday 10am - 2pm

Saturday 9am - 1pm

**Tel: 03000413131 lymingelibrary@kent.gov.uk**

## D.M.B. Plastering

All aspects undertaken  
Interior. Exterior. Plastering. Rendering.  
Coving. Ceilings. Wall. Floors  
Finest quality assured. CSCS Certified.  
30 years experience.

Free estimates. Reliable service. Fully insured.  
Call **David** on **07818 607209**



## Need to talk?

Confidential and compassionate  
qualified counsellor here to listen.  
Please call or text Natasha on 07593 794321  
All messages replied to  
Email: forestlodgetherapy@gmail.com  
www.forestlodgetherapy.com

## Personal Computing

For straightforward I.T. advice, solutions  
and training

Contact: **Steve Ashman**  
**862869**  
**sra@ashman-consulting.co.uk**

## B.M. Plumbing & Maintenance Services

Local Lyminge Tradesman

Plumbing and heating works. Complete bathroom  
install including tiling. General building maintenance  
undertaken. No job too big. No job too small.

Cheaper rates for senior citizens



**07890854128 Benmillsplumbing@hotmail.co.uk**

## Wilco Plumbing & Heating

Central Heating Installations & Repairs  
Gas & Oil Boiler repairs & replacements  
5 Year Guarantee on Worcester Bosch Boilers.  
Local Experienced Engineer, Emergency plumbing 24/7 call out  
Registered with the Institute of Plumbing  
Gas Safe Registered-OFTEC Registered  
**01303 862173 07860 452640**  
**paul@wilcoplumbing.co.uk www.wilcoplumbing.co.uk**

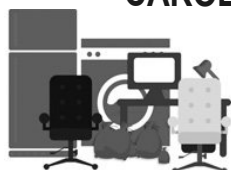
## JON DAUGHTERS - Local Builder

All aspects of general building works undertaken including:  
roofing, kitchens, bathrooms and small extensions

**Trading for over 30 years**  
**Free quotes, no obligations, fully insured**  
**Telephone: 01303 863371**  
**Email: daughters777@hotmail.co.uk**

House Clearance covering South East Kent.....and beyond!

## CAROL CREES CLEARANCES



- Est. over 30 years  
Full/part house clearance  
Fair prices paid  
Antique/Vintage/Retro/Modern  
Registered rubbish carrier

Contact **Simon Cullen** on **07745 421680** or **sijnzo@aol.com**



**www.eastkentfootcare.co.uk**

**07745 532075**

**Podiatry, Chiropody,  
Foot Health**

Treating and managing foot  
and nail conditions, corns,  
callus, insoles, ingrown nails,  
diabetic foot care



Total garden care for all your needs

## TIM MILLETT

Grass Maintenance, General Gardening, Small & Medium  
Size Tree Work, Stump Grinding and Wood chipping  
Fencing Repairs & New Installations  
Turfing, Hard & Soft Landscaping

Free Estimates - Fully Insured

**01303 863676 07752 880583**

Email: **info@tmhorticulture.co.uk**

## THE BIG LITTLE BATHROOM COMPANY



COMPLETE BATHROOM SUITES • BESPOKE CAST IRON RADIATORS  
TAPS • SHOWERS • TILES • ACCESSORIES • TEA & COFFEE

CANTERBURY ROAD, ETCHINGHILL, KENT CT18 8BS

sales@theblbc.co.uk • 01303 864349 • www.theblbc.co.uk

## N.P.C.

Domestic Appliance Services

Service and repair of washing machines, tumble driers,  
dishwashers, cleaners and small electrical work.  
For a prompt and friendly service

Call Neil Collard 01303 892234 or 07798716044  
or Google me on Yell.com

## Auto Economy Centre

Fully equipped Mechanical Repair & Service Centre

With the latest diagnostic equipment

Half price MOTs when booked with any service

**01303 863656**

**Orchard Garage, Canterbury Rd, Etchinghill**

**www.autoeconomycentre.com**

## Old English Pine

Antique, reproduction oak and French-style painted furniture with beautiful and reasonable priced accessories to make  
your house a home. Bespoke pine units made to order. Huge shop - over 3 floors open 7 days a week.

Tel: **01303 248560** **www.oldenglishpineinkent.co.uk** **100 Sandgate High Street, Sandgate**





**Dennis Huntley**  
Chimney Sweep



Wood burners and multifuel stoves installed  
Hearths and fireplaces built & installed  
Over 40 years' experience

**01303 862 343 • 07850 784 365**

dennis.huntley@talktalk.net • www.dennishuntley.co.uk



## AIR LINK CARS

(You pack up, we pick up)

Airport, Seaport & Long Distance Travel Specialists.  
The Family Run Business where service really counts  
Estate cars and People Carriers



Fixed price 24hrs a day. No extras.  
Written Confirmation of booking.

For the Easy Airport Link, Think AIR LINK!

**01303 670370 • 07766 824 474**  
airlinkcars@yahoo.com

## PODIATRY/CHIROPODY - LYLE-ISABELLE ARNOLD

MCPod, B.Sc Pod, ACC

For the diagnosis and treatment of and including the following:

- Diabetic Care
- The permanent surgical removal of ingrowing toenails
- Orthotic correction of biomechanical issues
- Painful joint or soft tissue issues
- Routine treatment of corns, callouses and nails
- Verrucae

**Patients seen by appointment only – 01303 863359**



## Sunhouse Electrical

Your local reliable Electrician

Part P Registered & Elecsa Approved

On Electrical Safety Register & Fully Insured

For a free quotation call James on

**01303 766333**

**www.sunhouse-electrical.com**

**Gosbee**  
LANDSCAPES

FENCING | GATES | PAVING | RESIN BONDING  
• Over 35 years experience • Jacksons Approved Installer  
• Marshalls approved • Check-a-trade registered

Call Martin Gosbee: 07974 835 511 | 01303 863 337

GOSBEECONSTRUCTION@GMAIL.COM  
GOSBEE.CO.UK



## SHARPENING

Knives, Gardening Shears,  
Secateurs, Edge Clippers, Scissors,  
Chisels, Plane Blades,  
Mower Rotor Blades, Chain Saws

Free collection and delivery locally.

Please call 01303 863743 or 07961019616 or

email: esposito321@btinternet.com

Please ring for prices.



**MANOR**  
VETERINARY CLINIC

We care for them all, great and small

Due to the current situation our Lyminge and Capel branches are temporarily closed. For enquiries, please contact our Folkestone practice

**Please call to book an appointment - 01303 273203**

**www.manorveterinaryclinic.co.uk**

## Technical Help When You Need It!

Gadget setup Internet help and training  
Purchase advice Security concerns (parental advice)  
Help with email TV remotes and tuning PC & Mac  
For all those little problems you want to sort.

**Call Nigel on 01303 647220 or email**  
**nigel@digitaldoctor.me**

**Experienced and qualified, 20 years in IT. Excellent rates.**



**SPRINGRISE**  
CANINE CARE SERVICES

Dog walking, pet and smallholding  
sitting, dog day care, dog  
accommodation & dog playground  
and so much more....!!

Free (no obligation) consultation.

CV & references available.

Fully insured and security  
screened.

Mobile: 07582407637 Email: susannahparkin@googlemail.com

Website: caninecare.thespringrise.co.uk



**AK Healthcare**

Tel: 07904311554 /  
07980897382

**www.akhealthcare.org.uk**

We help patients suffering from a wide variety of conditions including arthritic pain, circulatory problems, frozen shoulder, back pain, sciatica and much more.

Please visit our website or give us a call for more information.

**AK Healthcare,**  
**Garden Suite,**  
**4 Station Road, Lyminge**

## LYMINGE FOOD & WINE

**01303 862225**



Our new opening times are:

Mon – Sat **7:00-20:00**

Sunday & Bank Holidays

**8:00 – 20:00**

PayPoint

**POST OFFICE**



We offer National Lottery, ATM terminal,  
Post Office & PayPoint services.

## South East Aerial & Satellite Solutions

Digital – Freeview – Satellite – Aerials

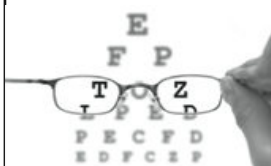
Supply and fit of quality digital installations, FREEVIEW, SKY, aerials, poor reception and problem solving, upgrades and repairs by fully accredited engineers

Free quotations and advice, fixed prices, fully insured

**Freeview**

**NO CALL-OUT CHARGE**  
**07825 168010 • 01303 862361**

**freesat**



## HOME VISITING OPTOMETRIST - providing professional eye care in your home

If you are over 60 years of age and no longer able to get out on your own, then you are eligible for a NHS sight test in your own home. Please call to arrange an appointment:

**Elaine Edwards BSc(Hons)MCOptom 01303 840541**

Registered with the General Optical Council (01-15421) Member of the College of Optometrists Member of the Association of Optometrists

## Financial Planning

**David Gridley - Chartered Financial Planner**

Range of quality advice from a fully qualified adviser:

- Pre- and Post-Retirement Planning
- Investment Planning
- Inheritance Tax Planning

For further information, please contact our Lyminge office

David Gridley FPFS

Tel: 01303 863959 Email: davidgridley@sjpp.co.uk

**MWH**

window and gutter cleaning service

**Mark Haley**

Lyminge and surrounding areas

For a free no obligation quote, please contact me

**Mobile: 07738 479202**

**Home: 01303 863 702 Email: haleymark161@gmail.com**

Find us also on Facebook



## OIL BOILER SERVICE

*Professional Friendly Service. Prompt Response to Breakdown Calls. Over 40 Years Experience.*

For Routine servicing, emergency breakdown calls and commissioning, contact:

**P & V QUENBY LTD (Est 1987)**

**01227 760428**

**www.oilboilerskent.co.uk**

## T. Metcalfe Fencing Contractors

Approved Expert Installer for Jacksons Fencing

Established over 30 years

Fully insured - Highly experienced teams



Panel fencing, gates, decking, pergolas, post & rail, stock fencing, security, landscaping & tree surgery.

**01303 840201**

**07790 290 155**

metcalfefencing@btinternet.com

Proprietor - Derek Burr,  
Ash Ridge House, Elham



**Lou Lloyd  
Carpenter**

**loulloyd@rocketmail.com**

**07984 426214**

**Kitchens, Flooring, Wardrobes,  
Doors, Decking and more!**

## Fincham Plumbing & Heating

Over 30 years experience. Gas Safe, CIPHE, WIAPS registered  
Lyminge residents

**Rosemary and Martin Fincham  
07835 851 706**

For your bathroom installations from start to finish,  
tiling, plumbing, gas, heating, radiators, boiler servicing  
Free estimates

## KSL Maintenance

*New Builds and Repair*

Timber Sheds, Carport, Garage extension, Shelter,  
Decking, Agri / Equestrian or Household Fencing and  
Gates. Steel Fabrication and Mig Welding projects

**Text/call: 07805 773251**

**Email: kevin.leppard@gmail.com**

Will respond within 24Hrs. Based in Rhodes Minnis.

**HAND MADE CURTAINS,  
ROMAN BLINDS & SOFT  
FURNISHING**

**CURTAIN ALTERATIONS**

**TEL: VALERY WREN 01303 237755**



**D & S DOUBLE GLAZING SERVICES**

**01303 863689 - 07912317915**

We are a local company that specialise in double glazing repairs offering a wide range of service's that include: Replacement double glazed units - Locks - Hinges - Handles - Rubber Seals - Gaskets.

For a free estimate please call: **07912317915 or 01303 863689**  
or email: **doublesglazingservices@gmail.com**



**CEDAR TREE CARE**

All types of tree work undertaken

Crown lifting, crown reductions,

dismantling and removals, hedge maintenance,

pollarding, stump grinding and removal, mobile saw milling,  
wood land maintenance, all year round seasoned logs available

Fully insured and NPTC qualified with over 15 years experience

**Call Tom: 07769 908027 email:linchlot5@gmail.com**



**Sarah de Rougemont**

Craftsman/Co-ordinator

**UPHOLSTERY**

All commissions considered  
**01227 455841 or 07973 377817**

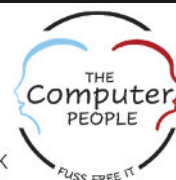
**SPEARPOINT  
TREE SERVICES**

All Aspects of Tree  
Work Undertaken  
NPTC Qualified  
Fully Insured  
Please call **Shane** for  
a Free Quote  
**07963 203564 or  
01303 621992**

**Red Boot  
Tech Services**



**THE COMPUTER LADY**  
For a fast and reliable service



For **ALL** your business & home **IT** support: **01797 363385 or enquiries@thecomputerpeopleltd.co.uk**





**T. M. GRIGGS**

01303 489795 07854 098395  
tobystreesurgery@gmail.com



**Garden Clearance - Turfing - Hedge Cutting  
Tree Work - Stump Grinding - Fence Repair**

## Filehurst Associates

**Tel: 01303 239990 E: info@filehurst.co.uk**

Domestic & Business Removals - UK & France  
Long or Short Term Storage  
Business Document Storage  
**Call now for a no obligation quote**

## FRESHLOOK GARDENS

Regular lawn mowing service. Garden design. Hard and soft landscaping. General garden work, fencing and decking. Turfing hedge cutting, small and medium tree work. Water features, ponds and patios.

For free quotation ring **Danny Scott**  
**01303 242140 or 07795510093**  
**mrdanscott89@gmail.com**

Established since 1990. Fully insured.



colebrooksturrock.com  
still THE local and regional specialist...  
SALES & LETTINGS  
Call now for your free market appraisal  
**01303 840422**  
elham@colebrooksturrock.com  
Incorporating **Browns**

Sandwich	Bridge	Minster	St Margarets At Cliffe	Walter	Salwood	Elham	Hawkinge
----------	--------	---------	------------------------	--------	---------	-------	----------

## Computer Repairs

01303 241325  
07968 129902

PCs, MACs, Laptops, Tablets & printers,  
Upgrades & Repairs, Internet & Email, virus removal,  
Office Setup, Backup & Recovery & much more ...  
Tuition available by a qualified tutor.

Usual Fee **£55**

Web sites built & hosted from £10 per month

See **www.computers-in-lymington.co.uk** for details



Local Tradesman

## J Tappenden

Established 36 years

Painter/Decorator/Builder

**01303 862467**

**077755 78008**



**Alan Croucher**  
**Caravan Engineer**

**07921 480919 - 01303 863194**

**Caravans & Motorhomes "WE COME TO YOU"**

**www.arcmobilecaravanservices.com**

*"Your manufacturer's warranty is safe in our hands"*



## Jackson Plumbing Property Maintenance

Complete bathrooms and tiling  
*No job too small. Special rates for OAP's.*

**Telephone: home/evening 01303 270691  
or daytime 07773 089398 or 07864 929826**

## A. J. Athow

**BUILDER & DECORATOR  
GENERAL MAINTENANCE**

Telephone: 01303 862616

Mobile: 07541 792238

Email: [tony@athow.co.uk](mailto:tony@athow.co.uk)



**Ralph Allard**  
**Chimney Sweep**



All chimneys, boilers and stoves swept.

Brush and Vacuum. Certificates issued.

HETAS and NACS registered, fully insured.

Member of National Association of Chimney Sweeps

**01303 844465 or 07813716654**

## Trevor Law Electrical Installations

Serving Elham Valley for 30 years  
Part P Registered

**01303 862348**

**07850 970087**



## J. V. Services Mobile Mechanic

**Servicing and Repairs:**  
• Garden Machinery  
• Ride on Mowers  
• Trailers & Horseboxes  
• Quad Bikes  
• Classic Cars  
(Free collection and delivery)

**Serve/Repair/Full Restoration:**  
• Compact Tractors  
• Vintage Tractors  
• Classic Tractors

**Mobile: 078 0300 3047**  
**john@jvserviceskent.com**



**JBS  
BUILDERS**

Specialising in Driveways, Brickwork, Patios, Fencing, Landscape Gardening. Tree work undertaken (lopping, felling and clearing).

General household repairs, painting, plastering, power jetting & cleaning.  
No job too small!!! All work guaranteed and insured.

**For free advice and quotations please call: 07825 168010/ 01303862361 (anytime)**





## DILTON MINI SKIP HIRE

Ballast, Hardcore, Sand  
and Topsoil Supplied  
REGISTERED WASTE CARRIER  
**01303 812448 or 07799 433754**

## FOWLER PLUMBING AND HEATING

Tel 01303 862971 Mob 07973513552

email

fowlerplumbingandheating@gmail.com



## Red Dragon I.T. Ltd.



- Windows, Mac & Linux Systems
- PC Health Checks
- Wired & Wireless Networks
- Website Design
- Graphic Design

T: 01303 723456 | E: info@rdit.co.uk | www.rdit.co.uk  
The Old Granary, Hanover Mill, Church Rd, Mersham, TN25 6NU



**KW CONSTRUCTION**  
PLASTERING & RENDERING SPECIALIST

ALL GENERAL BUILDING INCLUDING:  
ROOFING, BRICKWORK, TILING, PATIOS,  
LANDSCAPING, SCREEDING, GROUNDWORK,  
DRAINAGE, EXTENSIONS, RENOVATIONS,  
REPAIRS & MAINTENANCE.

30 YEARS EXPERIENCE, COMPETITIVE RATES,  
A FULLY INSURED, PROMPT & RELIABLE  
HIGH QUALITY LOCAL BUILDER

KENNY 07743488361



**Laing Bennett**  
INDEPENDENT ESTATE & LETTING AGENTS  
PHILIP A CHAPMAN

With our excellent local knowledge, service  
and two local offices we will get you moving

The Estate Office 8 Station Road Lyminge Kent CT18 8HP  
T 01303 863393 E lyminge@laingbennett.co.uk

134 High Street Hythe Kent CT21 5LB  
T 01303 264846 E hythe@laingbennett.co.uk

[www.laingbennett.co.uk](http://www.laingbennett.co.uk)



Hawkinge

## Veterinary Surgery

Independently owned veterinary surgery for all types of small animals.

Opening hours: Monday to Friday 08:00-19:00 Saturday 08:30-13:00

24hour emergency service

TEL: 01303 764190

Hawkinge Veterinary Surgery, 9b Defiant Close, Hawkinge CT18 7SU

[www.hawkingevetsurgery.co.uk](http://www.hawkingevetsurgery.co.uk)

*'Helping you enjoy your garden'*

## CRT Gardening

All general garden work undertaken including: garden design, hard  
and soft landscaping, new fencing installation and repairs, decking  
installation, hedge trimming and cutting, fruit and vegetable garden  
work, small to medium tree work. For a free quotation call either

Karl Dodd 07967 442518 Katie Dodd 07966 301978

or email karl.dodd@live.co.uk katie.dodd@live.co.uk

Fully Insured

## SCRUBBERS - Est. 1988

THE HOME AND COMMERCIAL CLEANERS

One off, regular or moving day 'Blitz'

Oven cleaning - Ironing

Carpet cleaning and more...

For a friendly and reliable service

Free Estimates

Tel: 01303 249288 or 07834 128671



**ROBERT KENT** Cert.fp  
FUNERAL DIRECTOR

Direct  
Cremation

£999

Fair Priced  
Cremation

£1950

ONE FIXED PRICE INCLUDING  
ALL CREMATION FEES



01303 684062

[RKFUNERALS.COM](http://RKFUNERALS.COM)



**Acrise Electrical Services Limited**

Design - Install - Maintain

Tel: 01303 656007 Mob: 07803 421240

Email: info@acrise-electrical.co.uk

Website: acrise-electrical.co.uk

Domestic, commercial, industrial & agricultural  
electricians serving the Elham Valley and surroundings.



**CEDAR HOME MAINTENANCE**  
General Builders and Roofing Specialist

Roofing ▲ UPVC windows/doors ▲ Kitchens/bathrooms  
Plastering ▲ Electrical installations ▲ Plumbing  
Call now for a free, no obligation quotation. All work carried out  
by qualified tradesmen. Fully insured - all areas of Kent covered.

Mobile: 07968197613 Office: 01303 230787

cedarhm@hotmail.co.uk & [www.cedarhomemaintenance.co.uk](http://www.cedarhomemaintenance.co.uk)



**Accounts & Bookkeeping Services**

[www.aabookkeepingservices.co.uk](http://www.aabookkeepingservices.co.uk)

Bookkeeping and Financial Accounting  
Accounts Preparation for Sole Traders and Partnerships  
QuickBooks, Excel, TAS, Sage and VT Final Accounting Software  
Self-assessments and VAT returns  
Over 10 years' financial experience.

Fixed prices available or hourly rate £20 per hour

Anita Adams BSc (Hons) MAAT AATQB

07891 135766 or 01303 864254 or [anitaadams@live.co.uk](mailto:anitaadams@live.co.uk)

## Tressenden Designs

A seamstress and costume maker with 8 years of experience.

- ♦ Clothing alterations ♦ Repair work undertaken ♦ Made-to-measure; create a bespoke piece for those special occasions
- ♦ Modern and vintage designs ♦ Costumes, ball gowns and wedding dresses

For more information or a quote please contact Amy on: Mobile: 07853 202304 Email: [amy.louise.ford@hotmail.co.uk](mailto:amy.louise.ford@hotmail.co.uk)





## Margaret Saunders' Meanderings



I have recently been given a macro lens for my phone camera which now accompanies me on my walks. This has brought a new level of pleasure and interest as I look for smaller and more intimate things to photograph.

It is a foggy morning and I set off without much hope of seeing anything to photograph or write about. However, once out in the open meadow, the mist and fog has left its mark on the vegetation in the form of thousands of droplets, ranging from large to minuscule. This type of weather seems to make larger drips than rain, maybe because the air itself is full of moisture which it gently deposits and a lack of wind ensures that these drips stay until the last minute, before falling. An inverted view of the surrounding saplings appear in these larger drips, resembling an upturned glass paperweight. It also produces tiny droplets, which have to be searched for on spider's webs, fragile stalks and spent seed heads.

The smallest of these seed heads have become encrusted with crystal jewels and the gossamer threads spun by spiders hold much smaller versions with such delicacy. I would normally have passed these gems by unseen but today I have my new lens with me which will capture these treasures.



It is chilly and damp and I don't expect to find much more of interest as I move on but as I pass through a gate I see some blackthorn blossom, the first of the season, pure white with long white stamens bursting forth with yellow tips, seemingly so full of joy, with each stamen holding a row of minuscule droplets along its length.

Walking along a bridle path amongst trees I stop and stand still to absorb the atmosphere: forest bathing the Japanese call it. Ramsons and cuckoo pint beginning their Spring growth; the criss-cross of dead and fallen branches and trees, covered in bright green lichen; the quick furtive movement of a shrew amongst the clutter of the woodland floor; a huge green claw-like shape of roots and a crocodile shaped trunk lying horizontal and green; the sculptural shape of an upstanding dead trunk, rotting unevenly, which could easily grace any art gallery; the uneven patter of drips as they fall haphazard on the ground.

So what started out as an unpromising walk, turned out to be full of treasures, many of which I would have missed had it not been for my macro lens.



# Out & About..

Do you have any photos of local events or groups in action? If so can you please forward them along with a few words to [pb@pbarnes20.plus.com](mailto:pb@pbarnes20.plus.com)



Recently planted daffodils and crocuses coming into flower in the area around the Parish Church.



## Wayside Watch

If you have any photos of favourite wild flowers, or any interesting wildlife, please send them to [adrian.willcox@virgin.net](mailto:adrian.willcox@virgin.net) together with a few words about them. Mystery ones also very welcome !!



☞ This fig tree produced these fruits towards the end of last year and they are now getting bigger with the [slightly] warmer weather. Do we have a fig expert in the villages who can tell us more about these exotic plants ?

It begins to look a bit more like SPRING is not far away now, the primroses are bursting out and the daffodils are waving their bright yellow heads to welcome people into the village.



## Mystery Flower I



Last month's double had several replies who recognised the **Woodcock** [*Scolopax rusticola*] and the yellow **Lesser Celandine** flower [*Ranunculus ficaria*]. Apparently, the 21st February is known as Celandine Day. It was noticed by naturalist Gilbert White way back in 1795 that the first celandines usually appeared in his Hampshire village of Selborne on this date and a similar result has been noted over the centuries ever since. Thank you to Julia Carr, Tony King, Maureen Cox, Chris and Sarah Glass and Jackie Hall, who identified one or both of the pictures

☞ Now, what is the tiny red spiky thing in this picture ?  
Any answers to: [adrian.willcox@virgin.net](mailto:adrian.willcox@virgin.net)

