

THE LYMINGE NEWSLETTER

For the communities of LYMINGE, ETCHINGHILL, RHODES MINNIS and POSTLING

February 2021

Produced by
THE LYMINGE ASSOCIATION
www.lyminge.org.uk

From The Lyminge Association

**C
O
V
I
D
-
19**



**V
A
C
C
I
N
A
T
I
O
N**

John Long (a young 100 years of age) is acting as a role model for his community by recently having his COVID-19 vaccination at the local hub in the Oaklands Health Centre, Hythe. With a smile on his face, he encourages everybody to take up the vaccination when their opportunity arrives. This centre is serving both Church Road and New Lyminge surgeries, among a number of others.

The Lyminge Newsletter has been told "Vaccinations are currently being rolled out in a structured way with people being invited in the first instance by text or a phone call to attend a vaccination centre. So, keep an eye on your mobile phone or home phones - there could be a vaccination invitation waiting for you. There is absolutely no point in turning up at a vaccination centre without an appointment, irrespective of how important you consider your need to be. Some people may be contacted by letter but this is not currently the norm."

In the meantime, keep healthy by following the government guidelines, keeping travel to essential journeys only, maintaining social distancing, wearing a face mask when in public and washing hands regularly.

DIARY OF EVENTS

This page is printed to give readers and organisers the opportunity of planning events without clashing with existing ones, which are already in the 'diary'. It is not intended as a means of advertising and we take no responsibility for errors or omissions. Acceptance is at the discretion of the editor. Please send your updates by email to pb@pbarnes20.plus.com or via methods outlined on Page 3. **Location and name codes follow:**

C&H: Coach & Horses; **EVH:** Etchinghill Village Hall; **ERA:** Etchinghill Residents' Association; **ELVH:** Elham Village Hall, **EVL:** Elham Valley Line Trust, **JC:** Jubilee Centre; **JF:** Jubilee Field; **KH:** Korf House; **LB:** Laing Bennett; **LBC:** Bowls Club; **LL:** Library; **LMC:** Lyminge Methodist Church; **LPC:** Lyminge Parish Church; **LPS:** Lyminge Primary School; **LVH:** Lyminge Village Hall; **LW:** Lord Whisky; **NP:** Nailbourne Court; **PC:** Postling Church; **PH:** Lord Whisky, Park Hse; **PVH:** Postling Village Hall; **RVH:** Rhodes Minnis Village Hall; **RMC:** Rhodes Minnis Church; **RMCS:** Rhodes Minnis Cat Sanctuary; **RR:** Rigden Room; **SMVH:** Stelling Minnis Village Hall, **SNL:** See News Letter for info; **SP:** Sibton Park; **SPCC:** Sibton Park Cricket Club; **TC:** Tayne Centre; **TF:** Tayne Field; **WF:** Well Field

One-Off Events

Date	Time	Event	Where	Tel. No.	Date	Time	Event	Where	Tel. No.
------	------	-------	-------	----------	------	------	-------	-------	----------

**THINGS ARE ON THE MOVE -
PLEASE DOUBLE CHECK THE
DETAILS BEFORE TURNING UP**

Lyminge Festival - 7th to 20th June 2021

Weekly Events

Day	Time	Event	Where	Tel. No.	Day	Time	Event	Where	Tel. No.
Mon	10am	Open House	EVH	863394	Wed ⁵	7pm	French Conversation	KH	862972
Mon	10am	Bridge Club	LBC	863177	Wed	7pm	Tayne Centre Circuits	TC	07925 982995
Mon	10.30am	Lyminge Larks (Singing)	LMC	07951 572920	Wed	7pm	Cantores Dominicae Choir	LMC	07840796383
Mon	11am	Pilates	TC	07825109670	Thurs	10am	RM Toddlers Group	RVH	863096
Mon	2.30pm	Knit and Natter	TC	863049	Thurs	10am	Art Group - Morning	TC	211364
Mon	6.30pm	Ballroom/Latin/Salsa Dancing	TC	07966 751991	Thurs	10.15am	Baby Rhyme Time	LL	03000413131
Mon	6.30pm	Judo Club	LVH	862946	Thurs	2pm	Art Group - Afternoon	TC	862972
Mon	7pm	Pilates	EVH	07951698008	Thurs	2-4pm	Free Computer Help & Guidance	LL	03000413131
Mon	7.30pm	Yoga	RMVH	07977503897	Thurs	6.45pm	Short Mat Bowls	LVH	863842
Tues	2pm	Pickleball	EVH	863819	Thurs	7pm	Pilates	EVH	07951698008
Tues	6.45pm	Short Mat Bowls	LVH	863842	Fri	8am	Chiropody (appointment only)	JC	269602
Wed	10.45am	Singing For Health	JC	862364	Fri	10am	Feel A Fairy Tale Sensory	EVH	07800737936
Wed	11.45am	Pilates	TC	07825109670	Fri	10.15am	Talk Time	LL	03000413131
Wed	2pm	Bingo	EVH	863819	Fri	7.30pm	Ballroom and Salsa Dancing	EVH	07967979610

Monthly Events

When	Time	Event	Where	Tel. No.	When	Time	Event	Where	Tel. No.
1st Mon	2pm	RBL, Elham Valley	St Mary's	862508	1st Thurs	6pm	Refill Station	LVH	
3rd Mon	7.30pm	Etchinghill Film Night	EVH	07544670363	3rd Wed	10am	Family History	LL	03000413131
Last Mon		Parish Council Meeting	SNL	07715221705	4th Wed	2.30pm	RM Circle	RVH	862913
1st Tues	2pm	Lyminge Reading Group	LL	03000413131	Last Wed	7.30pm	Quiz Night	C&H	862694
1st Tues ³	7.30pm	LHS Talk/Event	TC	863879	4th Fri	7.30pm	Beetle Drive	RVH	862616
2nd Tues	2pm	(Railway Readers)	LL	03000413131	Last Fri	1.30pm	Team Quiz	JC	269602
3rd Tues ²	7.30pm	Gardeners' Society	TC	07703149008	1st Sat	10am	Saturday@10	EVH	
Last Tues	2.15pm	Poetry Group	LL	03000413131	2nd Sat	10am	Postling Ch. Coffee Morning	PC	863536
1st Wed	10.30am	Lyminge Friends	RR	862598	3rd Sat	9am	Saturday Market	TC	862710
2nd Wed	10.30am	Mothers Union	NC	862221					

¹ In term time only ² Except Jan and Feb ³ Except Jan, Feb, and trip in Aug ⁴ Except Aug and Dec ⁵ Not held in August



St Mary and St Ethelburga Parish Church, Lyminge

Although we are now legally allowed to hold services, for safety reasons we have decided that, at present, no services will be held in the church building. It will, however, remain open for private prayer during daylight hours 9am – 4.30pm

There are on-line services available on the benefice website:

elhamvalleygroupofchurches.co.uk



CHRISTIANS IN LYMINGE



We are still unable to operate socially and look forward to the spring when hopefully we can meet up again.

Meanwhile stay safe and look after each other.

Lyminge Methodist Church

I would like to wish all our village friends well at this continuing difficult time, but unless circumstances change, we regret to say that both the church and the Tayne Centre will remain closed.

However, worship continues, albeit in many different ways. If you have the technology to receive Zoom and would like details please contact Mary Blanch at cblanch@rditmail.co.uk. There are also podcasts, services on YouTube, via the telephone or simply by post.

The one thing that we can all do is pray and you can be assured that you are remembered often, in the hope that it will not be too long before we can meet again.

God is always with us and your loved

Lyminge Anglo-Saxon Festival

The Lyminge Association and Pathways To The Past, the group supporting the heritage project involved in the recent excavations of Lyminge Parish Church, have joined forces to support this year's Lyminge Festival. Whilst we appreciate we are currently in the middle of a lockdown with no imminent end to it, we are hopeful that we should be able to enjoy a couple of weeks of fun and memorable events in June.

A small sub-committee has been formed - Rob Baldwin, Peter Barnes, Nancy Benham, Liz Coleman, Dave Hunt-Cook, Derek Smith and Adrian Willcox. It would welcome any groups or individuals from the community who may wish to put on an activity or help run/participate in the event. The theme is to reflect our Anglo-Saxon heritage and it will run from 7th to 20th June.

A provisional programme will be published to enable people gain a feel for the event and think of ways of supporting it. Initial contact can be made through either The Lyminge Association (01303 863737 or pb@pbarnes20.plus.com) or Pathways To The Past (07801 768266 or rob.baldwin50@hotmail.co.uk).



*Symbol based on Anglo-Saxon
button brooch found in the garden of
Korf House, Lyminge*

Lyminge Newsletter

Terms & Conditions: Copy deadline for next edition - 18 February 2021.

Please email your copy in to the editor (pb@pbarnes20.plus.com). Your payment must be received before your article or advert can appear in the Newsletter. Please leave your payment along with your name, organisation, telephone number and copy of your ad in a sealed envelope at the Lyminge Library.

Business adverts cost £9.50 per month or £95.00 per year. **Personal and charity adverts and articles** from £3 per month, or £30.00 per year. The annual rate offers 12 entries for the price of 10. Please make cheques payable to **'The Lyminge Association'**. If you do not have email, a typed paper-copy may be left with the payment at the Library (when back open). Printed by Canterbury Print & Mail.

Lyminge Association accepts no liability for the accuracy of the advertisements or subsequent actions arising in conjunction with advertisers in the newsletter.

Further details from Peter Barnes (editor) on 01303 863737 or pb@pbarnes20.plus.com

Etchinghill Update - February 2021

ETCHINGHILL RESIDENTS' ASSOCIATION

Contact - the chairman, David McCombe dmccombe1@gmail.com or call 07939 076617 Web - www.etchinghill.info

Facebook - Etchinghill Residents

CHRISTMAS TREE LIGHTS – our thanks go to Tim Millett and his colleague, Dave, for helping the committee remove the last of the lights from the large tree. Tim has kindly offered to tidy the tree and restrict its growth for the coming year.

LITTER PICKS - There will be no spring litter pick due to the current pandemic. Many residents already pick up rubbish whilst they are out and about and we are encouraging locals to take a carrier bag with them whilst they are out walking. Please dispose of any litter in a public waste bin and remember to sanitise or wash your hands afterwards; thank you.

COMMUNITY COMPASSION - Support is available from the Age UK community hub, but you too can support your neighbours by offering to help with maybe shopping or simply a chat. A slip, offering help, that can be put through a neighbour's door with the relevant information, can be found on the Etchinghill Residents website or Facebook page - see above.

A BIG THANK YOU! - our long standing friend and committee member, Christine Barnett, has resigned from the ERA due to her impending house move. Chris has been a valuable, hard working and innovative committee member for many years and her presence, knowledge and influence will be greatly missed. We wish her a long and happy future in her new home. Sadly, we now have 2 vacancies on the committee - if you would like to support your community, by joining our friendly and proactive team, please contact the Chairman as above, for more information.

Social activities are very limited at the moment of course, but if you have any information of future interest to Etchinghill residents that you'd like to be included in the next Newsletter, then please contact Jacqui Blandford: 07543 966830 or jacqui.blandford@gmail.com



Fifth Trust Update - www.fifthtrust.co.uk



During the January lock-down in order to protect students we have been offering on-line sessions only. Fortunately these are now well established. We also took the difficult decision to close our farm-shop and takeaway – to be reviewed end of January. To get up to date information on opening hours for our garden centre and café/farmshop please visit our website (see above). For log deliveries, please call 01227 831052 or email logs@fifthtrust.co.uk.

In aid of the LORD WHISKY SANCTUARY FUND (Registered Charity 283483)

Park House Animal Sanctuary
Stelling Minnis CT4 6AN. Tel: 01303 862622
www.lordwhisky.co.uk

We need your help more than ever before. Our work at the Park House Animal Sanctuary can only continue with your support.

We care for over 200 animals including horses, donkeys, sheep, pigs, goats, dogs, cats and rabbits as well as injured and orphaned wildlife.

The coronavirus pandemic has had a huge impact on our fundraising and we have received no government funding.

Please visit our website to make a donation, or send a cheque, made payable to Lord Whisky Sanctuary Fund, to Park House, Stelling Minnis, Kent CT4 6AN
www.lordwhisky.co.uk/donate

You can also ring us to make a debit/credit card donation
01303 862622

Thank you.



Anna Lindley
(RVN, Dip.A.Physio)

I offer physiotherapy assessment and treatment of dogs, cats and small animals

I treat your pet in the comfort of their own home

I use a combination of manual therapy, laser, ultrasound therapy, TENS, Kinesiology tape and exercises to rehabilitate your pet depending on your pet's needs.

Physiotherapy can help with arthritis and the ageing pet, post operative orthopaedic surgery, neurological, spinal conditions and many more conditions

I am fully insured with over 14 yrs experience working with animals. I am a member of the International Association of Animal Therapists (IAAT) and the Institute of Registered Veterinary and Animal Physiotherapists (IRVAP).

For more information please visit my website:
annasanimalphysio.co.uk or feel free to contact me on
07944 606453 or anna@annasanimalphysio.co.uk

District Councillors' Update - February 2021



Covid Vaccinations We're delighted that two buildings owned by your District Council are to be used for vaccinations. The car park at Civic Centre in Castle Hill Avenue, Folkestone is now a drive through vaccination centre and, as we write, work is under way to prepare Folca (the former Debenhams building in Sandgate Road, Folkestone) as a main centre. Lydd airport will also be used for vaccinations. Oaklands Health Centre in Hythe will continue to administer vaccinations for those registered with the following surgeries – Sun Lane, White House, Hawkinge and Elham, Church Road Lyminge, New Lyminge, and the Folkestone and the Oaklands Health Centres.

Please do not turn up on site or ring the site as you may hamper the vaccination effort. You will not get a vaccination without an invitation. For more information about vaccinations, see kentandmedwayccg.nhs.uk/covid19vaccine

Ideas are being invited for the work programme of the District Council's Scrutiny Committee. There's some guidance on the website about what can and can't be covered and you can ask for a form to submit your topic at committee@folkestone-hythe.gov.uk.

The District Council has been distributing grants and loans to businesses from the funding we've been allocated by the Government to deal with the impact of lockdown. The turnaround on getting grants to eligible businesses has been remarkably swift and it's well worth checking if your business can be helped. The Government has also allocated our district £75,000 to help individuals who are facing hardship. This funding has been going out since before Christmas with the council working with local organisations, including Citizens Advice, food banks and the community support hubs, to contact those most in need, to help them pay utility bills or buy food. If you wish to apply or nominate someone then you can do so via the website or through one of us.

We are proud of the way our staff have continued to keep services going despite illness and bereavement. Many of them had no break over Christmas as they were dealing with both the disruption caused by the closure of the border by France and the aftermath of litter left by the delayed HGV drivers. We'd also like to thank the volunteers who have helped with the clear up and those who offered to help provide food and drink to the stranded drivers (an offer that couldn't be accepted because of the Covid precautions).

We thought you would also be interested to learn that in the first full week of operation, the specialist contractors working for KCC clamped 192 illegally parked HGVs with many more given verbal warnings to move at the end of their permitted 45-minute break period. It's hoped these numbers will fall as word spreads about the new enforcement powers.

Please continue to follow the letter and the spirit of the Government guidelines to help reduce the spread of Covid as we wait for the vaccine to protect us all.

Jenny Hollingsbee (Jenny.hollingsbee@folkestone-hythe.gov.uk 07887918458) & Susan Carey (susan.carey@folkestone-hythe.gov.uk 01303 670561) - your district councillors for North Downs West, Folkestone and Hythe District Council

'Eureka'

A Eureka moment we have seen
As at last a vaccine's found
For scientists around the world
Are treating us to the sound

The sound of happy voices
As they work together on this one
To save our world from the Coronavirus
And from the harm it has now done

No vaccine had yet ever been found
So quickly with this success
Now the regulators have given the go ahead
To use North, South, East and West

Age they say is the way they'll deal with it
As the vaccine is now given
Starting with the N.H.S and the older folk
Now a campaign will be driven

No it is not mandatory
But please it's been proved to be so safe
Take it up as soon as it is offered
To stop this pandemic, please have faith

While this is all now going on
Don't relax and think it's gone
Adhere to the advice that is so wisely given
Then perhaps it won't be long

Not long before we start afresh
And forget, yes if we can
What has happened in twenty twenty
As we once more cuddle up to Nan

Terry Bickell December 2020



Community
Support Hub

Mount Pleasant Close, Lyminge Christmas Lights

We have received a wonderful, very generous, donation from Mount Pleasant Close Christmas Lights appeal. Thank you to everyone who contributed, with either funds, hard work or time. This will go towards assisting our local Clients more than ever with meals-on-wheels, prescription collecting, shopping and wellness telephone calls. When the vaccine roll out is completed, and our Centres open again, we'll be looking at what we can plan for our much-missed Clients. Thank you all so much.

Cleo and Hayley

See P10 for an update on the final amount raised



Pathways to the Past

One of the last objectives of our project is to install some specially commissioned artworks in and around the Parish Church to celebrate our very special Anglo-Saxon heritage. Local group Ethelburga Quilters is creating one of these: a quilted wall-hanging that will cover the end panel of the organ. This will serve as a fitting legacy for our project, providing a lasting reminder of the world of Queen Ethelburga who founded the first church in Lyminge.

The textile artwork will comprise 'blocks' of fabric dyed in subtle colours reflecting what might have been achievable in Ethelburga's day. These blocks will depict designs inspired by the many Anglo-Saxon artefacts unearthed in Lyminge over the past 150 years. These demonstrate the skill and creativity of local craftsmen, and illustrate the pleasure that our Anglo-Saxon ancestors found in design that was always decorative and could sometimes be comical.

While they will ultimately be sewn together and then wadded and quilted, the initial process to produce the blocks involves simply tracing a design, gluing (with bondaweb) the tracing onto a square, cutting the design out very carefully and then transferring the image on to another square by ironing it down.

We would like this textile artwork to be a community production. Would you like to be involved? We are looking for volunteers to each produce up to four squares that will be incorporated into the finished piece. Liz Coleman has

made up packs of the material you will need and will provide instruction in written form – or by Zoom if you would prefer. All you need is a little time and patience, a pencil and an iron! Please contact Liz on 01303 863197 or by email at lyminge.liz@live.co.uk.

We are still looking for funding to help us complete this project. If you would like to donate, then please go to our PayPal giving page at: https://www.paypal.com/donate?hosted_button_id=MRXPPMCTDCYWC, or scan the QR code alongside. You can make a gift by card or through PayPal, and if you are a taxpayer, you can add 25% to your donation through Gift Aid. PayPal does not charge us for this, so all your donation will go towards the project.



Write 300ish words on any subject - then send it to the editor

MAGPIES – Just now the garden is abrim with magpies, energetically spearing the last of the Bramley apples and clinging expertly to the vertical face of the bird-feeder while devouring peanuts. It demonstrates that they don't spend all their time killing small songbirds and game birds. Generally, magpies eat vegetation in winter and small ground creatures in summer, only raiding other birds' nests in spring when competition for food is fiercest.

I love seeing these fat sleek-headed killers with their immaculate black and white coats and long parrot-like tails, but they often arouse hatred in humans because of their aggression, thieving and carrion-eating. The scientific name *Pica pica* comes directly from the Latin 'pica' for magpie, becoming in English 'pie' and then 'Margaret-pie' or Shakespeare's 'maggot-pie', adding to the bird's fearsome reputation. Interestingly, 'pie' also means 'rule-book', from the black and white text, and leads to the adjective 'pied'.

The superstition surrounding magpies is most widely seen in the counting game "One for sorrow, Two for joy, Three for a girl, Four for a boy, Five for silver, Six for gold, Seven for a secret never to be told, Eight for a dream, Nine for a wish", or in its many regional variants. Originally, in the country, the number was determined by the number of magpies seen together. When the game spread to the towns and cities, children derived the number by manipulating the numbers on their bus and tram tickets in various ways. A work colleague once stood to attention to salute a solitary magpie "to ward off sorrow" and I've done it ever since.

Later I watched as a magpie dived from a fence, did a forward roll into some long grass, and came up with a vole. Now that really is typical magpie behaviour. *Steve Osborne*



Write 300ish words on any subject - then send it to the editor



Members Alert!

Annual General Meeting - We have not been able to hold the AGM this year, so an email has been sent to members for your information and for your response. If you are unable to access this email, can you please contact any member of the committee who will be more than willing to go through it with you. Contact can be made by using the Lyminge Gardeners' Society numbers in your 2020 schedule or by ringing 07703 149008.

Vegetable Growing Workshops

- as advertised last month, there are three free-of-charge workshops being run over the coming months. The first one **"Get Ready to Grow"** will be on Sunday 21st February between 2.30pm and 4.30pm via Zoom.



If you would like to attend please email: thoughtfulfoodgroup@gmail.com or lymingegardeners@gmail.com to reserve your place

MOTORCYCLES WANTED



MOT failures, non-runner, unfinished projects, damaged bikes, write-offs. From scooters to field bikes to 50% complete bikes. I will collect, remove and pay cash.

Telephone 01303 627021

Letter To The Editor.....

Dear Editor,

We are grateful for the letter (from our district councillors) regarding dog fouling. However, it appears not everybody has taken note. For many months we have not had a litter bin at the Station Road/Mayfield Road bus stop, but poop bags continue to be left there. This is not very pleasant for those living in that vicinity.

We would appreciate it if they could be removed and that this habit ceases immediately please.

Thank you! *Station Road Resident*

Rhodes Minnis Circle

January is behind us now and already the snowdrops and aconites are appearing around the village heralding the start of Spring.

On a sad note Gladys Harris passed away just before Christmas. She lived a good life for 98 years and we will miss her.

Keep safe and well. Marion 862913



*Lyminge
Historical Society*



Far from a degree of optimism that things might get back to a degree of normality by March, it is now apparent that, due to the continuing Covid-19 situation, and the new variants, there is a marked reluctance to reconvene meetings until the second Covid vaccine has been administered. This could take us up to June or beyond. Some of you may well have received the first vaccine, most are still awaiting the call. As ever, Government guidelines will determine the way forward. Watch the Notice Boards and the Lyminge Newsletter for further updates.
Stay safe and well.

Lyminge Historical Society Committee

**Lyminge a history can be purchased individually through
the Premier Food Store**

Plus: purchase Parts 1-5 as a bundle for £22 or Parts 1-10 for £50*

To take advantage of the offer please call Daphne Andrews on 01303 862865. This bundle offer is not available from the shop.

*Postage and packaging extra

Garden Safari 2021

Saturday 12th June - Sunday 13th June (if Boris allows)

Isn't nature wonderful, here we are deep into the worst pandemic in memory and Mother Nature has come to the rescue of our sanity by producing the start of yet another year of glorious growth, colour and diversity. Bulbs are emerging, buds are showing and the grass is looking greener.

It is the time of year when we start to think of planting indoor seeds or perhaps a new gardening project. With daylight hours increasing and hopefully a few good days of sunshine we can again venture into our winter ravaged gardens.

With that in mind, perhaps you would consider opening your garden to the public in our bi-annual Garden Safari, you do not need to have a spectacular show of specimen plants nor do you need a large landscaped spread, we have found that if you enjoy your garden others will too, big or small, wild or dainty. Please feel free to contact me with any aspect or questions.

Contact: Ray Smith 01303 863856



SPRINGRISE

CANINE CARE SERVICES

NEW PRODUCT LAUNCH - "SPRING RISE" PET FOOD RANGE

Spring Rise is excited to inform you of the launch of "My Own Label" dog food range. Over the past few months, I have been working hard to find a complete dog food that provides highly nutritious, ethically sourced, human grade fresh ingredients and a diet that can combine all the benefits of both raw and dry food. It was exciting to discover these criteria could be met using Freshtrusion™ technology, whereby my dog food ingredients (freshly prepared meats, vegetables and botanicals) are gently cooked at 90°C at low pressure which keeps in the freshness and protects the proteins, allowing the food to retain its full flavour and provide a highly nutritious food for your pet!

Spring Rise dog food provides a range of delicious dishes including, duck with parsnip, beetroot, orange, asparagus and pumpkin for those dogs with digestive issues or trout, salmon, sweet potato and asparagus! There are also lots and lots of mouth-watering treats such as calming and dental functional treats, along with healthy training treats and a variety of natural treats from my **Doggie Deli** to name a few!!!

If you have any special dietary requests, please let me know and I will discuss your requirements with the nutritionist and hopefully find a meal to suit your dog!!

.....and what's more, I can deliver to your door!!

***TOUCHANGO K9 TRAINING TOYS AND CANINE ENRICHMENT BOXES ***

Touchango K9 training toys are locally, handmade - bright, funky and durable, designed to encourage interactive play between you and your dog. The toys are handmade using carefully selected durable products making beautiful, super tough toys for the strongest of tugging dogs.... and all the balls used are non-toxic and free from nasty chemicals. Some of the toys are made with sheepskin or rabbit fur which is responsibly sourced within the UK. All can be purchased from **Spring Rise Pet Store**.

Spring Rise Enrichment Boxes are designed to "enrich/enhance the quality of your dog's daily life by stimulating their mental and physical capabilities". **Spring Rise Enrichment boxes** include a variety of items that are specifically designed to stimulate the six categories of enrichment: sensory, feeding, environment, toys/puzzles, social and training. Therefore, the contents will include any of the following: a puzzle toy, likimat, interactive toy, information handouts for basic fun training, how to engage your dog with interactive walks and/or booklets for activities such as Freework or Tellington TTouch along with ideas for a sensory garden. Also included in the box will be some natural treats that will involve chewing, training treats and the box and packing can be used as a snuffle box!

Contact: Spring Rise Pet Store

Maple Cottage, Westfield Lane, Etchinghill, Folkestone, Kent. CT18 8BZ

Mobile: 07582407637 : Telephone: 01303 863090 : Email: susannahparkin@googlemail.com

www.caninecare.thespringrise.co.uk

Elham Village Hall

Thinking of marrying in Autumn 2021 or Spring/Summer 2022

Our venue is licensed to hold wedding ceremonies and Civil Partnerships either outside in our newly built gazebo with stunning countryside surroundings or inside if preferred.

Contact our bookings co-ordinator for details:

bookingsecretary.evh@gmail.com or

07746790618



Times are hard right now but we continue to push on with our fundraising efforts and grant applications to make the new Tayne Field park a reality.

Our current focus is on raising around £60,000, which will enable us to begin building a section of the park, as part of a phased approach to the redevelopment.

So far we have £12,500 in the bank, and are currently looking at match funding opportunities to get us over the line.

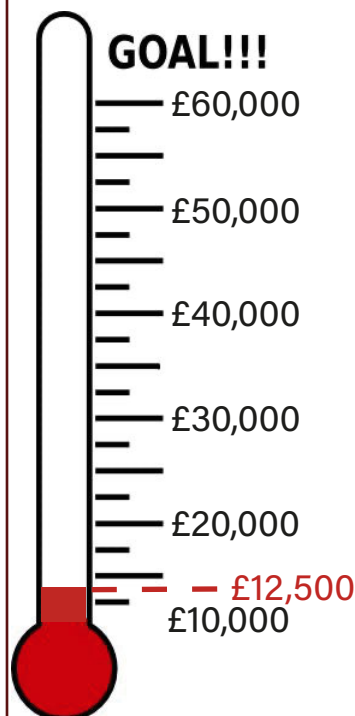
We are also currently planning a fundraising activity for Easter, and will have more detail on how to get involved with that in next month's newsletter.

As always, if you have any suggestions for fundraising or other funding options we could explore, please do get in touch lymingeyouthaction@gmail.com

All the best

Lyming Youth Action

www.lymingepark.com



Hythe Garden
Landscapes

Take advantage of our winter offers now by arranging those essential gardening jobs for January and February 2021.

To get the best of your garden in spring there are a number of jobs, which ideally should be done in the winter months:

- Clear beds & lay topsoil/compost
- Prune trees including fruit trees
- Planting
- Clear old turf and lay new
- Trim hedges and shrubs
- Repair and treat all timber fences, sheds & decking
- Jet wash paths and driveways

Why Choose Hythe Garden Landscapes?

- We are a well-established business providing a personal, friendly and honest service.
- We are a multi-RHS award-winning company with a 5-star reputation.
- Every project is finished to a high standard and we pride ourselves on our attention to detail.

Call now to arrange a free, no obligation quote on:
01303 770610 or email info@hythegardenlandscapes.co.uk

Coach & Horses



VALENTINE'S GIVEAWAY

Nothing says "I love you" more than sharing a delicious spread with someone.

We are offering a cream tea for two for over Valentine's Day weekend. Please contact us if you are interested!

Unfortunately, we will remain closed for dine-in meals over Valentines Day. However, you can still be celebrating!

We have composed a delicious, romantic menu so that all of you hopeless romantics can still enjoy a lovely day together, despite current circumstances. If you'd like to pre-order, check us out on Facebook where you will find our full menu and then order over Messenger or ring us on 01303 901011.

Every order will come with homemade truffle chocolates, a candle, and a mini bottle of Prosecco per meal.

Emily and Fred.

For bookings and any other help needed please phone 01303 901011 or check Facebook page 'Coach & Horses'



I Wandered Lonely As A Cloud

(With apologies to William W)

I wandered lonely as a cloud,
Two metres from the madding crowd,
When all at once my name was called
To enter Waitrose hallowed hall.

This was the pensioners' special hour,
My wife said: "Buy a bag of flour".
But I forgot, when through the door -
What I had gone to Waitrose for.

The Waitrose staff are very kind.
I told them it had slipped my mind.
They asked what else I had forgot -
They clearly thought I'd lost the plot.

I phoned my wife again to ask.
She reminded me of this special task:
"I need some flour to bake a cake
With all that cream you made me take."

"Ah yes, of course" I had to lie.
I dared not ask what flower to buy.
But then I saw them next the tills...
A bunch of golden daffodils!

With acknowledgements to the Daffodil Society

Lyminge Friends - February 2021

No planned meetings and visits till summer time due to Covid19. We will advise when the situation changes.

We hope everyone is OK and living the best life they can under the circumstances. Keep well and stay safe.

Meetings are 10.30am - 12.30pm in the Rigden Room of the Tayne Centre. Entry for 2021 is £3.00 which includes light refreshments. We are a friendly social group and welcome new members so just drop into one of our meetings, or, if you'd like to talk to one of us first, please call 863500.



Mount Pleasant Close Christmas Lights

A big thank you to the visitors who came from near and far to see the lights and donated so generously to help us raise £7000 for the charities we support. It is a very difficult year for charities to raise funds and we were delighted to have helped with some desperately needed income.

Many thanks again to you all.

Paul Marsh and the residents of Mount Pleasant Close



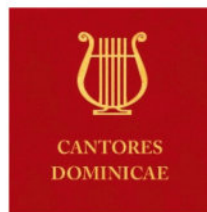
www.tamsinsteelart.com

Tamsin Steel Art PET PORTRAITS

Beautiful and unique
coloured pencil drawings
to be treasured.
A special gift
for yourself, family
and friends.

Enquiries tamsinsteelart@gmail.com

Editor: pb@pbarnes20.plus.com



Cantores

Charity Commission registration number 1087409n

Want to Try Singing On-Line?

Cantores has continued rehearsing on-line throughout this past year. Everyone has learned new tricks with technology and really enjoying the opportunity to keep singing, staying connected, seeing familiar faces and looking out for each other.

We know some choirs have not been able to get together so if you are missing singing, do join us on-line on Wednesdays at 7pm for an hour.

Perhaps you have been wondering if singing in a choir is for you. Why not come along one Wednesday evening for a taster session. We are "on silent" when we sing - only you can hear yourself! There are recordings available to practise in between sessions.

This term we are learning John Rutter folk songs and pieces on Spring/Creature/Nature theme and working towards an on-line concert on March 17th. We can share some of the pieces we are practising now so you can get a feel for the style of the choir this term.

Do get in touch if you want some help getting onto Zoom, or if you have any questions. Singing really is very good for you!

Nancy Benham, Chair of Cantores

01303 863076 nancybenham@aol.com

Volunteers needed in Rhodes Minnis

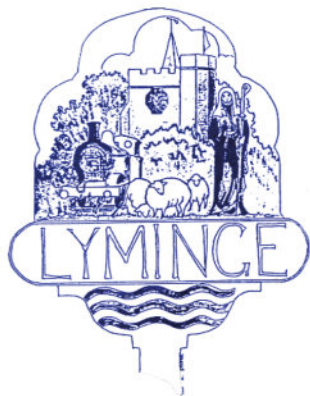
Volunteers are needed in Rhodes Minnis to record bird observations in the village for a new interactive online checklist of the birds in the village. This will help build up a picture of seasonal bird abundance in the village, and can be used to monitor trends over time.

Anyone can register on www.eBird.org and add observations to the Rhodes Minnis (village) eBird hotspot. The hotspot can be searched for on the eBird website, or go directly to www.ebird.org/hotspot/L13060724/ - then click on "Illustrated checklist" to browse the species recorded so far.

To add your own bird observations click on one of the "Contribute yours" buttons for any of the species, this will take you to the same record input page regardless of which species you've clicked on. If you have any old records they can also be entered like this, but if you have lots they can be imported as a spreadsheet - please contact us for help if you'd like to do this.

There are also eBird checklists for Lyminge (village) and Etchinghill golf course, which everyone is welcome to add to, and anyone can add new public "hotspots" or private locations as appropriate, for anywhere in the world. Every record helps for monitoring species trends, so thanks for any contributions.





LYMINGE PARISH COUNCIL

February 2021 Newsletter

Forthcoming Council and Committee Agendas are displayed on the Council notice boards in Lyminge Station Road car park, the Rhodes Minnis bus shelter and the entrance to the Village Hall car park, Etchinghill. Agendas and minutes are published on the Council's website www.lymingepc.kentparishes.gov.uk and Facebook page. We invite you to read the minutes online or on the noticeboards which may provide the information you are seeking regarding a particular item, but correspondence is always welcome from parishioners and can be sent to the Clerk at the addresses given below.

TIME TO HAND OVER THE CHAIR?

Well, yes – I had already primed my fellow councillors that I would be standing down in May 2021, but by standing down at the November meeting of the Council, I thought there would be ample time for a smooth handover before then – I had not reckoned with the reluctance of my colleagues to step into the role!

It's been such a privilege to be Chair and I was greatly helped for an all too brief time by our former Clerk, Lynne Martin, who sadly passed away. Soldiering on for a few months clerk-less was not easy, but then we had the good fortune to appoint Cherri Norman to the post who hit the ground running, as they say, and soon got to grips with the 101 tasks involved in Clerkship! I am sincerely grateful for all her help which made my job so much easier. Everything was settling into a good routine, then along came Covid! This has brought its own challenges and changes in how we meet and conduct our business – meetings via Zoom is now the norm.

Over the time I have been Chair I have tried to engage with and recruit new people to the Council bringing a good mix of skills and expertise keen to take forward projects, lodging valid comments on planning applications, strengthening links with other parish councils, CPRE and championing the value of living in an Area of Outstanding Natural Beauty. We now have a sound team working on behalf of

the Parish with lots of good things planned for the coming year as outlined last month by Rob Baldwin. I am sure whoever takes over as Chair will have the support of the whole council to ensure we continue to work in the best interests of the parish.
Cllr. Chris Barnett

PLEASE KEEP TO THE FOOTPATHS

With lots of people out walking during lockdown it is important we all stick to the many Public Footpaths that are available and not walk across farmer's fields or where there is no public right of way.



Do also please take all rubbish home with you and always pick-up your dog's poo!

GREEN SALT BINS Please remember the parish council's green salt bins are for use on communal areas rather than private driveways. If you notice your local bin is getting low on salt, please contact the Clerk for a re-fill. The Yellow bins are the responsibility of KCC.

EGRETS IN THE PARISH Many Lyminge residents will have seen the little egret that has been around Lyminge recently, almost daily in the Nailbourne or Well Field and apparently also often along the path from North Lyminge to Ottinge. Some people have reported two, although I've only seen one at a time. Are they enjoying the peace of lockdown to settle here?



More surprisingly I spotted a great egret flying over the village on 10th January, a first for me in Lyminge. Much larger than a little egret, great egrets are the size of grey herons, don't have the bright yellow feet that little egrets have, and in winter have yellow bills rather than the dark bills of little egrets. I've been told a great egret also spent a couple of days in the fields around Postling in October. Presumably great egret sightings are becoming more and more likely with these changing times, although the RSPB website currently gives a figure of just 35 overwintering great egrets in the UK, compared to 4,500 for little egret (plus c700 resident breeding

pairs of little egrets). I'm not sure how up-to-date these RSPB figures are, but they give a good indication of the relative abundance of the two species. I remember back in the 1980s when seeing little egrets in UK was a very rare occurrence, my parents used to travel once a year to the Sussex coast to see them. They first bred in the UK in 1996, and now they are well established in England and Wales.



Great egrets occur across most of the globe and are expanding their range in Europe and therefore are becoming more regular winter visitors to the UK, a few pairs are now known to breed here, apparently the first to breed were in Somerset in 2012.

Another species to keep an eye out for is the white stork, breeding again in the UK for the first time in centuries thanks to the efforts of the white stork project based primarily in Sussex, one was apparently spotted in a local field fairly recently. Please keep an eye out for all these species, and if possible record any observations through eBird, iRecord, or other online recording sites. Alternatively let us know by email to lymingeclimateaction@gmail.com

Cllr. Tom King (with thanks to Derek Smith and Noah and Sam King for the photos)

FEBRUARY COUNCIL MEETINGS:

Finance and Administration - Monday 8th February at 7.00pm via Zoom

Full Council - Monday 22nd February at 7.30pm via Zoom.

Members of the public are welcome to attend the virtual meetings. There will be a specific opportunity to comment upon items on the agenda, or raise other matters. Anyone who wishes to attend should contact the clerk for details of how to join the meeting.

Cherri Norman, Clerk and Responsible Financial Officer

Correspondence Address: Lyminge Parish Council, PO Box 1159, Canterbury, Kent CT1 9PR

Telephone: 07715 221 705 Email: lymingepc@btinternet.com

www.lymingepc.kentparishes.gov.uk

[www.facebook.com Lyminge Parish Council](https://www.facebook.com/LymingeParishCouncil)

Lyminge Climate Action



Thoughtful Food....

...is a group of local volunteers looking at our food, and how this impacts climate change. Our aims are to support people to produce more of their own food, and to shop locally, sourcing seasonal produce. We also run a community allotment in Lyminge and welcome new members. Contact: thoughtfulfoodgroup@gmail.com or on Facebook and Instagram @thoughtfulfoodgroup. We are meeting on the first Tuesday evening of the month via Zoom - please email if you would like to attend.

NEWSFLASH *Vegetable Growing Workshops now on Zoom*

If you would like to attend the free-of-charge workshops for new gardeners, these will now be held on Zoom. Please email thoughtfulfoodgroup@gmail.com to reserve your place.

- 'Get Ready to Grow' - Sunday 21st February 2021 14:30-16:30
- 'Seeds and Sowing' - Sunday 14th March 2021 14:30-16:30
- 'Potting and Planting' - Sunday 18th April 2021 14:30-16:30

What to do now...February

Thoughtful Food member, and Lyminge Gardeners' Society Chair, Anne Gould, has kindly set out her thoughts on what to do in our gardens in February as we can finally get started with this year's growing season!

We can't help 'champing at the bit' with getting going with sowing! However, it is still usually quite cold and the days do not provide much light. **February 14th** is a good time to start thinking about seed sowing inside or undercover. From now light levels increase fast.

Sowing **undercover with no extra warmth** might mean in a sheltered greenhouse or in an unheated room on a windowsill where there is a lot of light.

Sowing undercover with extra warmth means inside a heated greenhouse on an indoor windowsill / table or conservatory with a lot of light. You can add to the protection by covering the seed trays which maintains moisture and the warmth. Once the seeds have germinated remove the cover, otherwise the baby seedlings may rot off and die. Still keep them in the light and warm place. If they start to go leggy or bend towards the light, it is too warm and there is not enough light. Move them to a cooler, lighter location.

Undercover sowings with no extra warmth:

Broad beans, spinach and chard, winter lettuce varieties, peas for shoots, onions, shallots, early brassicas such as calabrese, kohlrabi, cauliflower, turnips – yes turnips are brassicas!), radish, bulb fennel, parsley (although this can be overwintered outside here in Kent so you may have some from last year still), coriander, dill.

Undercover with a little extra warmth:

Aubergine, peppers, chillies. Sow these by EARLY MARCH because they need a long growing season to produce a harvest.

Outside: broad beans and garlic if not done already.

(Acknowledgments to Charles Dowding for sowing recommendations. www.charlesdowding.co.uk)

Potatoes: You can buy seed potatoes – especially raised for planting out – either online or from the garden centres. Farthing Common Nursery always have a good range of choices. As soon as you have bought them, you can either 'chit' them (put in open egg box in a light cool place and allow the 'eyes' to grow) or save them in a cool dark place before direct planting them. There's not much in it really. First earlies are a good one to buy - any variety. These are traditionally planted at Easter and give a lovely tasty early crop in June - but more of that next time.

Let us know how you are getting on or what you need support with in your vegetable garden/orchard.

National Parks and Areas of Outstanding Beauty

The National Parks and Access to the Countryside Act 1949 is now over 70 years old and has never been more important or relevant than over the pandemic and to us actually living in one - North Kent Downs.

Laying the foundations

The foundations for the National Parks and Access to the Countryside Act 1949, were laid by 3 government reports produced in the late 1940s. These reports proposed 12 National Parks and 52 conservation areas (which were later to become Areas of Outstanding Natural Beauty). Most of these areas have become the well-known and familiar National Parks and Areas of Outstanding Natural Beauty (AONBs) we know today.

Finally, also in 1947, the Huxley Committee published the Conservation of Nature in England and Wales, more commonly referred to as Command 7122, which established the ethos and initial suggested list of National Nature Reserves (NNRs) as well as proposing a category of sites that would evolve into Sites of Special Scientific Interest.

At an international level the National Parks and AONBs in England all fall under The International Union for Conservation of Nature (IUCN) Category V: Protected Landscape / Seascape.

The 1949 Act was a very significant piece of legislation. This and subsequent legislation (including the Countryside Act 1968, Wildlife & Countryside Act 1981, Environment Act 1995, The Countryside and Rights of Way Act 2000 (CRoW) and Natural Environment and Rural Communities Act 2006 (NERC)) underpin virtually all the statutory work undertaken by NE.

National Parks and Areas of Outstanding Natural Beauty

The 1949 Act provided the framework for the creation of National Parks and AONBs in England and Wales.

a. National Parks

In 1995 The Environment Act revised the original legislation and set out two statutory purposes for National Parks in England and Wales:

1. Conserve and enhance the natural beauty, wildlife and cultural heritage, and
2. Promote opportunities for the understanding and enjoyment of the special qualities of national parks by the public



When National Parks carry out these purposes they also have the duty to seek to foster the economic and social well-being of local communities within the National Parks. The Broads was given equivalent status to that of a national park by the Norfolk and Suffolk Broads Act 1988.

In terms of England's finest landscapes we now have 10 National Parks covering 1,264,600 hectares or 9.70% of the country.

b. Areas of Outstanding Natural Beauty

The purpose of an AONB designation is to conserve and enhance the natural beauty of the designated landscape. There are 34 AONBs in England covering 1,927,000 hectares or 14.77% of the country.

The first AONB was the Gower Peninsula, South Wales designated in 1956. The first AONB in England being the Quantock Hills in 1957.



National Nature Reserves (NNRs)

The 1949 Act provided The Nature Conservancy (NC) with the ability to establish Nature Reserves: the first NNR declared in the UK was Beinn Eighe in Scotland back in 1951.

In England we now have 225 NNRs covering 93,572 hectares or 0.72% of the country.

Our local NNRs are Ham Street Woods (declared in 1952), Wye Downs and Stodmarsh. The most recent declarations in 2019 include Bolton Fell & Walton Mosses NNR in Cumbria and the South London Downs NNR.

Sites of Special Scientific Interest (SSSIs)

The Act provided The Nature Conservancy with the duty to inform local planning authorities of areas of special scientific interest. From humble beginnings these duties were transferred to NCC, with the Wildlife and Countryside Act in 1981 enhancing the protection of SSSIs. This saw NCC re-notify all the '49 Act SSSIs under the W&C Act in the late 80's. We now have 4,112 SSSIs covering 1,096,588 hectares or 8.41% of England notified for the flora, fauna, or geological or physiological features they contain.

Access

Finally, the 1949 Act was the first piece of legislation to make it possible to establish long distance trails (National Trails) and the principles of access to open land defined as mountain, moor, heath, down, cliff or foreshore. This later became 'right to roam' under CRoW and finally established the rights fought for by Kinder Scout trespassers.

The legislation has left us with the legacy of an amazing series of National Parks and AONBs.



Lyminge Pre-School



Lyminge Preschool provides quality Early Years education and day care all year round for children aged 2-5 years. The Pre-School is run by a team of qualified, highly experienced and dedicated practitioners.

Lyminge Pre-school has a safe, stimulating and fun environment that provides support and challenge for all of the children's individual needs. We welcome all children from the age of two from all surrounding areas.

To arrange to meet the team, please call 01303 863149 (day) or email lymingepreschool@gmail.com and visit our website www.lymingepreschool.org.uk

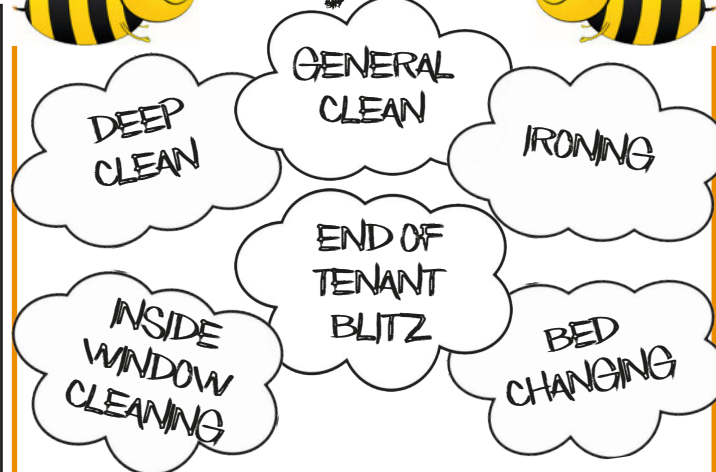
Etchinghill Baby & Toddler Group

We are a friendly toddler group, which caters for babies and children from 0 to school age. Crafts, messy play, trikes, toys and a singing session are included each week. In dry weather there is also outside access for the children to play.

We meet on Wednesdays between 10am-12noon at Etchinghill Village Hall. We charge £2 per family, 1st session is free. Tea/coffee and healthy snacks are provided. If you have any queries please contact **Cait Byrne** - **07850757571**



Busy Bees



Locally - based cleaning company with a competitive rate of £12 P/H
For a friendly & reliable service call **07385 635149**
References available upon request

SNIPPERS & CLIPPERS UNISEX HAIR SALON

- APPOINTMENT NOT ALWAYS NEEDED
- WEDDINGS & SPECIAL OCCASIONS
- SHELLAC NAILS
- GENTS WELCOME
- FREE WIFI

4 Station Road, Lyminge
Folkestone
Kent, CT18 8HP

01303 647 222

info@snippersandclippers.co.uk



Find us on Google+

Find us on: facebook

Snippers and Clippers welcomes Rebecca to the team. As a special offer we are offering 25% off haircuts with her. Phone 01303 647222 to make your booking
Please bring this voucher with you for the discount



BADGERS BRIDGE NURSERY

" Bridging the indoor and outdoor learning environment for children in their Early Years"

Badgers Bridge is set in the idyllic countryside of Postling, just outside Lyminge. We are a small and friendly Preschool who blend the Montessori principles with the outdoor learning ethos.

We were awarded Outstanding by Ofsted in 2018 in every area. This is a real achievement and we are really proud of the staff who work tirelessly to provide a stimulating and caring environment for the children of Badgers Bridge.

The inspector was particularly impressed with our Forest School. *"Children enjoy limitless opportunities to explore, investigate and work together in the natural woodland environment. Staff skilfully inspire children to develop a significant understanding of the world in which they live".*

".....exemplary relationships between staff provide excellent role models for children and promote high standards of behaviour. Children make outstanding progress during their time at the nursery".

We are filling up fast and only have 3 spaces available. So please call or email us:.

Email : badgersbridge@gmail.co.uk

Website : www.badgersbridge.co.uk

Tel : 01303 862951

Postling Village Hall, The Street, Postling CT21 4EU

Ofsted Registered : 395128

Companies House Reg : OC375571





PIANO LESSONS FOR ADULTS

Have you always wanted to learn to play the piano but have lacked the opportunity, or faith in your own ability? Did you learn as a child and now regret having given it up? I specialise in teaching adults and have developed a method which will enable you to progress quickly and with great enjoyment.

Please contact: Lise Cribbin, Bridge 01227 637709

Rhodes Minnis Cat Sanctuary



REHOMING & BOARDING CATTERY

- Our Sanctuary takes in and rehomes 250 unwanted cats and kittens each year. A variety of cats are always available to suitable homes.
- 5* Boarding Cattery under 2018 regulations
- We are open to visitors every day from 10-1 & 2-4. No appointment necessary.

T: 01303 862 243

E: rminniscats@gmail.com

Facebook: [@rhodesminniscats](https://www.facebook.com/rhodesminniscats)

www.rhodesminnis.co.uk

Seathwaite, Green Lane, Rhodes Minnis, Kent. CT4 6XU
Reg. Charity No. 262245



APX PROJECT
MANAGEMENT

From design to build, we use trusted quality trade professionals along with reliable suppliers to ensure budgets are met, with high standards maintained.

If you're looking to -

- Extend you property
- Carry out an external or internal refurbishment
- Convert an existing building into a new dwelling

Please contact: paul@apxprojectmanagement.co.uk 07487 364155



Snippers and Clippers Barbers - Lyminge

Please call Richard to book an appointment

01303 647 333

07522 494 969

4 Station Road, Lyminge CT18 8HP

Follow us on facebook for offers

Elham Dog Training Club

All round dog training service for you and your dogs, available from before you even bring your puppy home, in the comfort of your home and continuing for the first four weeks of your new bundle of joy coming home! Fully insured and Kennel Club Registered

Classes at Elham Village Hall and 1-2-1 sessions available.

Contact us for more information and to book a space on a course:

Lyn Fagg 01303 862820 or Sue Coulstock 07542 727326

Email: elhamdtc@gmail.com

Editor: pb@pbarnes20.plus.com

Andy Mannering Flooring

SPECIALISING IN AMTICO AND KARNDLEAN
LUXURY VINYL TILES

- Also safety flooring, rubber flooring, etc.
- Commercial and domestic work undertaken
- No job too small
- Free estimates and advice given
- Over 35 years experience
- Fully insured



Telephone: 0797 434 7248 or 01303 863095

Email: info@andymanneringflooring.com

Please visit my website for further information and feedback

www.andymanneringflooring.com

Patsy's Home & Pet Services

I have over 11 years experience working in care and domestic support along with a lifetime of experience with animals.

With a current DBS (Disclosure and Barring Service) Check Certificate, I am

- Available to support with washing and dressing, food and medication, domestic support, shopping and appointments
- Available to dog walk and pet sit
- Available to provide house sitting and short term respite in the comfort of your own home, allowing family members to take a break

Prices from £12.00 per hour

I am happy to discuss your requirements

Please contact Patsy

Mobile: 07484627776

Email: kimpaterson53@gmail.com

Lyminge Baby and Toddler Group

Due to Covid-19 the toddler group is not currently running.

If you have any questions please contact

Sarah on 07984 939220

Park House Sanctuary Boarding Kennels & Cattery

Park House, Stelling Minnis

CT4 6AN

Brick-Built Heated Kennels

Daily Walks ~ Reasonable

Rates Dogs must be fully
inoculated

Heated Cat Chalets

Quiet Area Inspection Invited.

To book or for further

information, call

01303 862622

or email

lord.whisky@btinternet.com

www.lordwhisky.co.uk

matchams
plumbing & heating

**Gas & Oil Boiler Service
Repair
Installation**

**For fast, efficient service
contact us:**

01303 277254

service@matchams.co.uk

**248 Cheriton Road,
Folkestone CT19 4DN**



Tel: 01303 863737

The Lyminge Association

We're here to support and develop our community!!

Contacts:

Chair: Peter Barnes 863737
pb@pbarnes20.plus.com
Vice Chair: Adrian Willcox 862699
adrian.willcox@virgin.net
Treasurer: Janet Fry 863177
janet@rhodesminnis.org.uk

Committee Members: Nancy Benham, Marian Chubb, Richard Chubb, Fran Davis, Dave Hunt-Cooke, Gillian Heywood, Sylvia Norris, Derek Smith, Ray Smith, Penny Stephens

Newsletter: As for Peter Barnes above

ETCHINGHILL VILLAGE HALL HIRE FEES

The next time you are thinking of holding a function why not try Etchinghill Village Hall, which holds the highest Hallmark accreditation level (Hallmark 3), with its excellent facilities, including ample parking space.

The standard hire charge for the main hall and kitchen are:

Weekdays £11.00 per hour
Saturdays £13.00 per hour
Sundays £13.00 per hour

During the winter months (1 November to 31 March) a Winter Supplement of £1.00 per hour is added to the above rates.

Special rates apply for weddings and all day events with discounts on the above rates applying to Etchinghill residents and regular hirers.

The use of a separate Committee Room is also available.

For all bookings or enquiries please contact:

The Duty Manager on 07514 758936

bus times

for buses from Lyminge **The Sidings** to
Folkestone town centre via Etchinghill & Cheriton High Street

MONDAYS TO SATURDAYS except Bank Holidays

There are route 17 buses at 0705 (not Saturdays), 0749, 0909, 0934 (not Saturdays), 1004, 1034, 1104, 1204, 1304, 1404, 1514, 1614, 1619 (schooldays only), 1654 (schooldays only), 1719, 1749, 1834, 1929, 2113 and 2313.

There are also route 18 buses to Sandling Station & Hythe - for times see our website or call the number below.

SUNDAYS & BANK HOLIDAYS

There are route 17 buses at 1032, 1302, 1532 and 1802.

for buses from Lyminge **Wesley Terrace** to
Canterbury city centre via Elham, Barham & Bridge

MONDAYS TO SATURDAYS except Bank Holidays

There are route 17 buses at 0727 (schooldays only), 0732, 0752, 0903, 0938, 1028, 1128, 1235 (1228 on Saturdays), 1335, 1443, 1608 (1613 on Saturdays), 1703, 1803, 2001 and 2201.

There are also route 18 buses to Canterbury via Stelling Minnis and Bosingham - for times see our website or call the number below.

SUNDAYS & BANK HOLIDAYS

There are route 17 buses at 0903, 1133, 1403, and 1633.

These bus times will operate from 28 October 2018.



03456 00 22 99 @StagecoachSE
southeast.enquiries@stagecoachbus.com
stagecoachbus.com

Editor: pb@pbarnes20.plus.com

Lyminge Village Hall

Registered charity 281845

Large, refurbished, flexible hall with great facilities

From Theatre productions to Weddings, Craft Fayres to Children's parties - we've got it all covered!

Capacity: 200 people dancing / audience seating,
100 for table seating, 50 or less for meetings

Well equipped: stage, kitchen, small rooms, ample parking facilities, disabled access

Access to: playground, skate park, large playing field

Situation: Rolling hills behind and the Church to the front.

Find out how we can help you with your next event:

Booking Line: 0749 7625 741

Email: lvh.bookings@outlook.com



Guideline prices



MAIN HALL HIRE ~ Fri, Sat PM £65

SMALL ROOM ~ £20

EXCLUSIVE ALL HALL ~ £320

Rhodes Minnis Village Hall

Charity No.800345

Rhodes Minnis Village Hall is located 2kms (1¼miles) from Lyminge and just off Longage Hill and Whitehorse Lane in Chapel Lane

The hall, which holds Hallmark accreditation, is ideal for children's parties, band practice, quizzes, meetings, wedding receptions, fundraising events and much more. It has a fully equipped kitchen.

Rates

Mon to Fri £18 per session £48 all day

Sat & Sun £23 per session

£33 for evening session and £69 all day

Sessions

AM session 08.30 - 12.30

PM session 13.30 - 17.30

Evening session 18.00 - 23.45

Separate rates for Bank Holidays and New Year and special rates for regular users.

For all bookings and enquiries please contact:

Mick & Dorothy Athow 01303 862616 e-mail: mick@athow.co.uk

TAYNE CENTRE HALL HIRE

Previously known as the Lyminge Methodist Church Hall



Clayson Hall

1 October to 31 May (including heating) £9.50 per hour :

£34.00 per 4 hour session : £66.00 full day

1 June to 30 September

£7 per hour :£25.00 per 4 hour session :£48.00 full day

Rigden Room (Parlour) with heating, if required*

£7 per hour all year (*electric - over heaters).

Burren Room - storage only

Overnight Stays

1 June to 30 September £50; 1 October to 31 May £60

For any enquiries please call **07971 722 401**

Lyminge Library Opening Times

Monday 10am - 2pm
Tuesday 12noon - 5pm
Wednesday 10am - 2pm
Thursday 10am - 5pm
Friday 10am - 2pm
Saturday 9am - 1pm

Tel: 03000413131 lymingelibrary@kent.gov.uk



Dennis Huntley
Chimney Sweep



Wood burners and multifuel stoves installed
Hearths and fireplaces built & installed
Over 40 years' experience

01303 862 343 • 07850 784 365

dennis.huntley@talktalk.net • www.dennishuntley.co.uk



AIR LINK CARS

(You pack up, we pick up)

Airport, Seaport & Long Distance Travel Specialists.
The Family Run Business where service really counts
Estate cars and People Carriers



Fixed price 24hrs a day. No extras.

Written Confirmation of booking.

For the Easy Airport Link, Think AIR LINK!

01303 670370 • 07766 824 474
airlinkcars@yahoo.com

PODIATRY/CHIROPODY - LYLE-ISABELLE ARNOLD

MCPod, B.Sc Pod, ACC

For the diagnosis and treatment of and including the following:

- Diabetic Care
- The permanent surgical removal of ingrowing toenails
- Orthotic correction of biomechanical issues
- Painful joint or soft tissue issues
- Routine treatment of corns, callouses and nails
- Verrucae

Patients seen by appointment only – 01303 863359



Sunhouse Electrical

Your local reliable Electrician

Part P Registered & Elecsa Approved

On Electrical Safety Register & Fully Insured

For a free quotation call James on

01303 766333

www.sunhouse-electrical.com



FENCING | GATES | PAVING | RESIN BONDING

- Over 35 years experience • Jacksons Approved Installer
- Marshalls approved • Check-a-trade registered

Call Martin Gosbee: 07974 835 511 | 01303 863 337

GOSBEECONSTRUCTION@GMAIL.COM
GOSBEE.CO.UK



SHARPENING

*Knives, Gardening Shears,
Secateurs, Edge Clippers, Scissors,
Chisels, Plane Blades,
Mower Rotor Blades, Chain Saws*

Free collection and delivery locally.

Please call 01303 863743 or 07961019616 or

email: esposito321@btinternet.com

Please ring for prices.



MANOR
VETERINARY CLINIC

We care for them all, great and small

Lyminge Clinic: Methodist Church Hall

Tuesdays 2.30 - 4.30pm

Please call to book an appointment - 01303 273203

www.manorveterinaryclinic.co.uk

Technical Help When You Need It!

Gadget setup Internet help and training
Purchase advice Security concerns (parental advice)
Help with email TV remotes and tuning PC & Mac
For all those little problems you want to sort.

**Call Nigel on 01303 647220 or email
nigel@digitaldoctor.me**

Experienced and qualified, 20 years in IT. Excellent rates.



SPRINGRISE
CANINE CARE SERVICES

*Dog walking, pet and smallholding
sitting, dog day care, dog
accommodation & dog playground
and so much more....!!*

Free (no obligation) consultation.

CV & references available.

Fully insured and security
screened.

Mobile: 07582407637 Email: susannahparkin@googlemail.com

Website: caninecare.thespringrise.co.uk



AK Healthcare

Tel: 07904311554 /
07980897382

www.akhealthcare.org.uk

We help patients suffering
from a wide variety of
conditions including arthritic
pain, circulatory problems,
frozen shoulder, back pain,
sciatica and much more.

Please visit our website or give
us a call for more information.

**AK Healthcare,
Garden Suite,
4 Station Road, Lyminge**

LYMINGE FOOD & WINE

01303 862225



Our new opening times are:

Mon – Sat **7:00-20:00**

Sunday & Bank Holidays

8:00 – 20:00

PayPoint

**POST
OFFICE**



We offer National Lottery, ATM terminal,
Post Office & PayPoint services.

South East Aerial & Satellite Solutions

Digital – Freeview – Satellite – Aerials

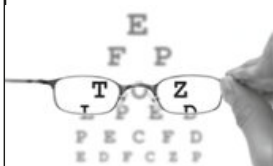
Supply and fit of quality digital installations, FREEVIEW, SKY,
aerials, poor reception and problem solving, upgrades and
repairs by fully accredited engineers

Free quotations and advice, fixed prices, fully insured

Freeview

**NO CALL-OUT CHARGE
07825 168010 • 01303 862361**

freesat



HOME VISITING OPTOMETRIST - providing professional eye care in your home

If you are over 60 years of age and no longer able to get out on your own, then you are eligible for a NHS
sight test in your own home. Please call to arrange an appointment:

Elaine Edwards BSc(Hons)MCOptom 01303 840541

Registered with the General Optical Council (01-15421) Member of the College of Optometrists Member of the Association of Optometrists

Financial Planning

David Gridley - Chartered Financial Planner

Range of quality advice from a fully qualified adviser:

- Pre- and Post-Retirement Planning
- Investment Planning
- Inheritance Tax Planning

For further information, please contact our Lyminge office

David Gridley FPFS

Tel: 01303 863959 Email: davidgridley@sjpp.co.uk

MWH

window and gutter cleaning service

Mark Haley

Lyminge and surrounding areas

For a free no obligation quote, please contact me

Mobile: 07738 479202

Home: 01303 863 702 Email: haleymark161@gmail.com

Find us also on Facebook



OIL BOILER SERVICE

Professional Friendly Service. Prompt Response to Breakdown Calls. Over 40 Years Experience.

For Routine servicing, emergency breakdown calls and commissioning, contact:

P & V QUENBY LTD (Est 1987)

01227 760428

www.oilboilerskent.co.uk

T. Metcalfe Fencing Contractors

Approved Expert Installer for Jacksons Fencing

Established over 30 years

Fully insured - Highly experienced teams



Panel fencing, gates, decking, pergolas, post & rail, stock fencing, security, landscaping & tree surgery.

01303 840201

07790 290 155

metcalfefencing@btinternet.com

Proprietor - Derek Burr,
Ash Ridge House, Elham



**Lou Lloyd
Carpenter**

loulloyd@rocketmail.com

07984 426214

Kitchens, Flooring, Wardrobes,
Doors, Decking and more!

KSL Maintenance

New Builds and Repair

Timber Sheds, Carport, Garage extension, Shelter, Decking, Agri / Equestrian or Household Fencing and Gates. Steel Fabrication and Mig Welding projects

Text/call: 07805 773251

Email: kevin.leppard@gmail.com

Will respond within 24Hrs. Based in Rhodes Minnis.

Fincham Plumbing & Heating

Over 30 years experience. Gas Safe, CIPHE, WIAPS registered

Lyminge residents

Rosemary and Martin Fincham

07835 851 706

For your bathroom installations from start to finish, tiling, plumbing, gas, heating, radiators, boiler servicing

Free estimates

**HAND MADE CURTAINS,
ROMAN BLINDS & SOFT
FURNISHING**

CURTAIN ALTERATIONS

TEL: VALERY WREN 01303 237755



D & S DOUBLE GLAZING SERVICES

01303 863689 - 07912317915

We are a local company that specialise in double glazing repairs offering a wide range of service's that include: Replacement double glazed units - Locks - Hinges - Handles - Rubber Seals - Gaskets.

For a free estimate please call: 07912317915 or 01303 863689

or email: dsdoubleglazingservices@gmail.com



CEDAR TREE CARE City & Guilds NPTC

All types of tree work undertaken

Crown lifting, crown reductions,

dismantling and removals, hedge maintenance,

pollarding, stump grinding and removal, mobile saw milling,

wood land maintenance, all year round seasoned logs available

Fully insured and NPTC qualified with over 15 years experience

Call Tom: 07769 908027 email:linchlot5@gmail.com



Sarah de Rougemont

Craftsman/Co-ordinator

UPHOLSTERY

All commissions considered
01227 455841 or 07973 377817

**SPEARPOINT
TREE SERVICES**

All Aspects of Tree
Work Undertaken
NPTC Qualified
Fully Insured
Please call **Shane** for
a Free Quote
07963 203564 or
01303 621992

**Red Boot
Tech Services**



THE COMPUTER LADY

For a fast and reliable service



For **ALL** your business & home **IT** support: 01797 363385 or enquiries@thecomputerpeopleltd.co.uk

COUNTRY FARE

CATERING SERVICES

Country Weddings, Christenings and All Family Gatherings, Corporate Lunches, Seasonal Parties & Celebration Cakes

Sally Burr 01303 489795 07814 610995
sallycountryfare@gmail.com

FRESHLOOK GARDENS

Regular lawn mowing service. Garden design. Hard and soft landscaping. General garden work, fencing and decking. Turfing hedge cutting, small and medium tree work. Water features, ponds and patios.

For free quotation ring **Danny Scott**
01303 242140 or 07795510093
mrdanscott89@gmail.com

Established since 1990. Fully insured.

Filehurst Associates

Tel: 01303 239990 E: info@filehurst.co.uk

Domestic & Business Removals - UK & France
Long or Short Term Storage
Business Document Storage
Call now for a no obligation quote



colebrooksturrock.com
still THE local and regional specialist...
SALES & LETTINGS
Call now for your free market appraisal
01303 840422
elham@colebrooksturrock.com
Incorporating
Browns

Sandwich	Bridge	Minster	St Margaret At Cliffe	Walmer	Salwood	Elham	Hawkinge
----------	--------	---------	-----------------------	--------	---------	-------	----------

Computer Repairs

01303 241325
07968 129902

PCs, MACs, Laptops, Tablets & printers,
Upgrades & Repairs, Internet & Email, virus removal,
Office Setup, Backup & Recovery & much more ...
Tuition available by a qualified tutor.

Usual Fee £55

Web sites built & hosted from £10 per month

See www.computers-in-lyminge.co.uk for details



Local Tradesman

J Tappenden

Established 36 years



Painter/Decorator/Builder

01303 862467

077755 78008



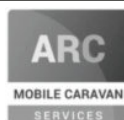
Alan Croucher
Caravan Engineer

07921 480919 - 01303 863194

Caravans & Motorhomes "WE COME TO YOU"

www.arcmobilecaravanservices.com

"Your manufacturer's warranty is safe in our hands"



Jackson Plumbing Property Maintenance

Complete bathrooms and tiling
No job too small. Special rates for OAP's.

Telephone: home/evening 01303 270691
or daytime 07773 089398 or 07864 929826

A. J. Athow

BUILDER & DECORATOR
GENERAL MAINTENANCE

Telephone: 01303 862616

Mobile: 07541 792238

Email: tony@athow.co.uk



Ralph Allard
Chimney Sweep



All chimneys, boilers and stoves swept.
Brush and Vacuum. Certificates issued.
HETAS and NACS registered, fully insured.

Member of National Association of Chimney Sweeps

01303 844465 or 07813716654

Trevor Law

Electrical Installations



Serving Elham Valley for 30 years
Part P Registered

01303 862348

07850 970087

J. V. Services

Servicing and Repairs: Serve/Repair/Full Restoration:

- Garden Machinery
- Ride on Mowers
- Trailers & Horseboxes
- Quad Bikes
- Classic Cars

(Free collection and delivery)

Mobile Mechanic

- Compact Tractors
- Vintage Tractors
- Classic Tractors

Mobile: 078 0300 3047

john@jvserviceskent.com



JBS
BUILDERS

Specialising in Driveways, Brickwork, Patios, Fencing, Landscape Gardening. Tree work undertaken (lopping, felling and clearing).

General household repairs, painting, plastering, power jetting & cleaning.

No job too small!!! All work guaranteed and insured.

For free advice and quotations please call: 07825 168010/ 01303862361 (anytime)





DILTON MINI SKIP HIRE

Ballast, Hardcore, Sand
and Topsoil Supplied
REGISTERED WASTE CARRIER
01303 812448 or 07799 433754

FOWLER PLUMBING AND HEATING

Tel 01303 862971 Mob 07973513552

email

fowlerplumbingandheating@gmail.com



Red Dragon I.T. Ltd.



- Windows, Mac & Linux Systems
- PC Health Checks
- Wired & Wireless Networks
- Website Design
- Graphic Design

T: 01303 723456 | E: info@rdit.co.uk | www.rdit.co.uk
The Old Granary, Hanover Mill, Church Rd, Mersham, TN25 6NU



KW CONSTRUCTION
PLASTERING & RENDERING SPECIALIST

ALL GENERAL BUILDING INCLUDING:
ROOFING, BRICKWORK, TILING, PATIOS,
LANDSCAPING, SCREEDING, GROUNDWORK,
DRAINAGE, EXTENSIONS, RENOVATIONS,
REPAIRS & MAINTENANCE.

30 YEARS EXPERIENCE, COMPETITIVE RATES,
A FULLY INSURED, PROMPT & RELIABLE
HIGH QUALITY LOCAL BUILDER

KENNY 07743488361



Laing Bennett
INDEPENDENT ESTATE & LETTING AGENTS
PHILIP A CHAPMAN

With our excellent local knowledge, service
and two local offices we will get you moving

The Estate Office 8 Station Road Lyminge Kent CT18 8HP
T 01303 863393 E lyminge@laingbennett.co.uk
134 High Street Hythe Kent CT21 5LB
T 01303 264846 E hythe@laingbennett.co.uk

www.laingbennett.co.uk



Hawkinge

Veterinary Surgery

Independently owned veterinary surgery for all types of small animals.

Opening hours: Monday to Friday 08:00-19:00 Saturday 08:30-13:00

24hour emergency service

TEL: 01303 764190

Hawkinge Veterinary Surgery, 9b Defiant Close, Hawkinge CT18 7SU
www.hawkingevetsurgery.co.uk

'Helping you enjoy your garden'

CRT Gardening

Knowledge of general gardening, including lawn care, fencing
installations and repairs, hedge trimming and cutting, vegetable
garden work, all tree work undertaken from felling, topping and
clearing to stump grinding by a qualified tree surgeon.

Heavy-duty work is also undertaken.

Free estimates; fully insured. Karl Dodd 07967442518

Email: karl.dodd@live.co.uk

SCRUBBERS - Est. 1988

THE HOME AND COMMERCIAL CLEANERS

One off, regular or moving day 'Blitz'

Oven cleaning - Ironing

Carpet cleaning and more...

For a friendly and reliable service

Free Estimates

Tel: 01303 249288 or 07834 128671



ROBERT KENT Cert.fp
FUNERAL DIRECTOR

Direct
Cremation

£999

Fair Priced
Cremation

£1950

ONE FIXED PRICE INCLUDING
ALL CREMATION FEES



01303 684062

RKFUNERALS.COM



Acrise Electrical Services Limited

Design - Install - Maintain

Tel: 01303 656007 Mob: 07803 421240

Email: info@acrise-electrical.co.uk

Website: acrise-electrical.co.uk

Domestic, commercial, industrial & agricultural
electricians serving the Elham Valley and surroundings.



CEDAR HOME MAINTENANCE
General Builders and Roofing Specialist

Roofing * UPVC windows/doors * Kitchens/bathrooms
Plastering * Electrical installations * Plumbing
Call now for a free, no obligation quotation. All work carried out
by qualified tradesmen. Fully insured - all areas of Kent covered.

Mobile: 07968197613 Office: 01303 230787

cedarhm@hotmail.co.uk & www.cedarhomemaintenance.co.uk



Accounts & Bookkeeping Services

www.aabookkeepingservices.co.uk

Bookkeeping and Financial Accounting
Accounts Preparation for Sole Traders and Partnerships
QuickBooks, Excel, TAS, Sage and VT Final Accounting Software
Self-assessments and VAT returns
Over 10 years' financial experience.

Fixed prices available or hourly rate £20 per hour

Anita Adams BSc (Hons) MAAT AATQB

07891 135766 or 01303 864254 or anitaadams@live.co.uk

Tressenden Designs

A seamstress and costume maker with 8 years of experience.

- ♦ Clothing alterations ♦ Repair work undertaken ♦ Made-to-measure; create a bespoke piece for those special occasions
- ♦ Modern and vintage designs ♦ Costumes, ball gowns and wedding dresses

For more information or a quote please contact Amy on: Mobile: 07853 202304 Email: amy.louise.ford@hotmail.co.uk



D.M.B. Plastering

All aspects undertaken
Interior. Exterior. Plastering. Rendering.
Coving. Ceilings. Wall. Floors
Finest quality assured. CSCS Certified.
30 years experience.

Free estimates. Reliable service. Fully insured.
Call **David** on **07818 607209**



Need to talk?

Confidential and compassionate
qualified counsellor here to listen.
Please call or text Natasha on 07593 794321
All messages replied to
Email: forestlodgetherapy@gmail.com
www.forestlodgethecounselling.com

Personal Computing

For straightforward I.T. advice, solutions
and training

Contact: **Steve Ashman**
862869
sra@ashman-consulting.co.uk

B.M. Plumbing & Maintenance Services

Local Lyminge Tradesman

Plumbing and heating works. Complete bathroom
install including tiling. General building maintenance
undertaken. No job too big. No job too small.

Cheaper rates for senior citizens



07890854128 Benmillsplumbing@hotmail.co.uk

Wilco Plumbing & Heating

Central Heating Installations & Repairs
Gas & Oil Boiler repairs & replacements
5 Year Guarantee on Worcester Bosch Boilers.
Local Experienced Engineer, Emergency plumbing 24/7 call out
Registered with the Institute of Plumbing
Gas Safe Registered-OFTEC Registered
01303 862173 07860 452640
paul@wilcoplumbing.co.uk www.wilcoplumbing.co.uk

JON DAUGHTERS - Local Builder

All aspects of general building works undertaken including:
roofing, kitchens, bathrooms and small extensions

Trading for over 30 years
Free quotes, no obligations, fully insured
Telephone: 01303 863371
Email: daughters777@hotmail.co.uk

House Clearance covering South East Kent.....and beyond!

CAROL CREES CLEARANCES



- Est. over 30 years
Full/part house clearance
Fair prices paid
Antique/Vintage/Retro/Modern
Registered rubbish carrier

Contact **Simon Cullen** on **07745 421680** or **sijnzo@aol.com**



www.eastkentfootcare.co.uk

07745 532075

**Podiatry, Chiropody,
Foot Health**

Treating and managing foot
and nail conditions, corns,
callus, insoles, ingrown nails,
diabetic foot care



Total garden care for all your needs

TIM MILLETT

Grass Maintenance, General Gardening, Small & Medium
Size Tree Work, Stump Grinding and Wood chipping
Fencing Repairs & New Installations
Turfing, Hard & Soft Landscaping

Free Estimates - Fully Insured

01303 863676 07752 880583

Email: **info@tmhorticulture.co.uk**

THE BIG LITTLE BATHROOM COMPANY



COMPLETE BATHROOM SUITES • BESPOKE CAST IRON RADIATORS
TAPS • SHOWERS • TILES • ACCESSORIES • TEA & COFFEE

CANTERBURY ROAD, ETCHINGHILL, KENT CT18 8BS

sales@theblbc.co.uk • 01303 864349 • www.theblbc.co.uk

N.P.C.

Domestic Appliance Services

Service and repair of washing machines, tumble driers,
dishwashers, cleaners and small electrical work.
For a prompt and friendly service

Call Neil Collard 01303 892234 or 07798716044
or Google me on Yell.com

Auto Economy Centre

Fully equipped Mechanical Repair & Service Centre

With the latest diagnostic equipment

Half price MOTs when booked with any service

01303 863656

Orchard Garage, Canterbury Rd, Etchinghill

www.autoeconomycentre.com

Old English Pine

Antique, reproduction, oak and French-style painted furniture with beautiful and reasonable priced accessories to make
your house a home. Bespoke pine units made to order. Huge shop - over 3 floors. Open 7 days a week.

Tel: **01303 248560** **www.oldenglishpineinkent.co.uk** **100 Sandgate High Street, Sandgate**

What a Difference a Day Makes....

January has been a varied month weather-wise giving us rain, mist, snow, frost, freezing fog and a little taste of sunshine. But it was the freezing fog, frost, and sunshine that brought me the most pleasure on my continuing Covid walks.

Freezing fog made for a cold and bitter walk but also delightful scenes of silhouetted trees against a struggling sun making for mysterious and ethereal views. Frost clothed every tree, bush and blade of grass in white, breathtakingly pure and crisp and worthy of close inspection to ensure I did not miss any of the transitory beauty, which on the south facing side of the Skeete

Valley was already disappearing in the warming effect of the early morning sun. Puddles and ponds frozen and solid, displayed a range of stunning patterns that only nature could produce.

And then came a day of brilliant sunshine, cold but bright, that banished all thoughts of the dull wetness that has seemed to characterize this first month of the year. The sky was a perfect blue, deep and satisfying and it followed many days of almost continuous rain. However, this rain produced in its turn, a surprising beauty that I found, on this one day only, in the field opposite Sibton Park, near where the footpath crosses over the Valley road leading to the Nailbourne.



The water table must have been very near the surface as suddenly a lake appeared, complete with wind driven ripples, seagulls and to my delight, a whole host of wagtails, making the most of this new found environment. The pure blue sky was reflected in the water creating a beautiful spectacle, peaceful and pleasing, enhanced by the unexpectedness of its appearance.

Covid-19 has brought much sadness and grief to our world but it has also given us the opportunity to appreciate and value its simple beauty on our doorstep.

Margaret Saunders



Rhodes Minnis is very grateful to KCC for the new road speed signs which recent appeared.



A recent frosty morning in Etchinghill, courtesy of Jacqui Blanchford

Wayside Watch

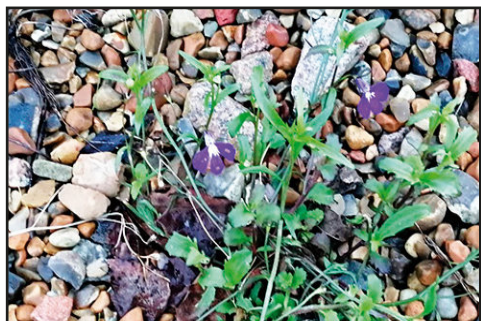
If you have any photos of favourite wild flowers in bloom locally, please send them to adrian.willcox@virgin.net together with a few words about them.



With our winters being a touch less cold than in the past, some of our plants seem to have got a bit mixed up over when spring is arriving! This **Broom** bush [probably *Cytisus scoparius*] has started to open its yellow pea-like buds already. The broom is part of a very large genus of trees and shrubs including laburnum and gorse under the name *Genista*. This is apparently where the name Plantagenet comes from as it said that Geoffrey, Count of Anjou, the father of Henry II had a habit of wearing a sprig of **planta genista** in his helmet.



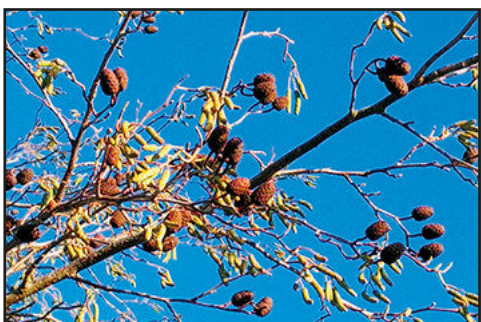
Another sign of spring - these newly emerged **Snowdrops** [*Galanthus nivalis*] were seen in Lyminge hedgerows.



Mystery Flower !

Last month's Mystery Flower seems to have stumped most people - with only one suggestion coming in. So here it is again in closer detail. Is it just an escaped Lobelia ?

Any other suggestions to: adrian.willcox@virgin.net



With nearly all the leaves gone we can see some of the seeds. Can you identify both these trees showing last year's seeds ready to drop off the parent tree? The left hand one also has this year's catkins visible too.

Answers as above, please.

