

THE LYMINGE NEWSLETTER

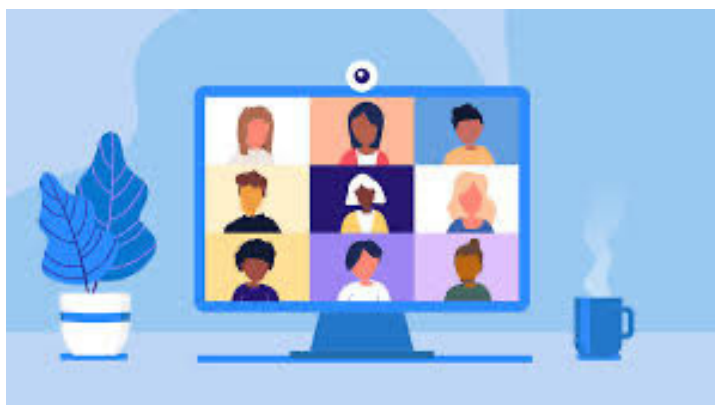
For the communities of LYMINGE, ETCHINGHILL, RHODES MINNIS and POSTLING

March 2021

Produced by
THE LYMINGE ASSOCIATION
www.lyminge.org.uk

From The Lyminge Association

Village Virtual Quiz



Friday 26 March 7.30pm

(lasting one hour on Zoom)

Invite your family and friends. Settle down with a glass of wine or a cuppa, together with some snacks and exercise those grey cells!!

Theme: Exotic!!

A short escape from our Covid-focussed lives

Security Notice: To prevent gate crashers and to protect everyone's privacy, please send your email address to register and admit you into the quiz, together with the number of members in your team (maximum 6) to:

[Nancy Benham - nancybenham@aol.com](mailto:nancybenham@aol.com)

When you register, do let Nancy know the names of those in your team. And don't worry if you're on your own! You'll be put into teams so you can confer.

Closing Date: Monday 22 March

A short Zoom guide will be sent to you to help you make the most of the evening.

If anyone needs extra help to get onto Zoom, please contact Nancy.

There is no charge or admission fee.

DIARY OF EVENTS

This page is printed to give readers and organisers the opportunity of planning events without clashing with existing ones, which are already in the 'diary'. It is not intended as a means of advertising and we take no responsibility for errors or omissions. Acceptance is at the discretion of the editor. Please send your updates by email to pb@pbarnes20.plus.com or via methods outlined on Page 3. **Location and name codes follow:**

C&H: Coach & Horses; **EVH:** Etchinghill Village Hall; **ERA:** Etchinghill Residents' Association; **ELVH:** Elham Village Hall, **EVL:** Elham Valley Line Trust, **JC:** Jubilee Centre; **JF:** Jubilee Field; **KH:** Korf House; **LB:** Laing Bennett; **LBC:** Bowls Club; **LL:** Library; **LMC:** Lyminge Methodist Church; **LPC:** Lyminge Parish Church; **LPS:** Lyminge Primary School; **LVH:** Lyminge Village Hall; **LW:** Lord Whisky; **NP:** Nailbourne Court; **PC:** Postling Church; **PH:** Lord Whisky, Park Hse; **PVH:** Postling Village Hall; **RVH:** Rhodes Minnis Village Hall; **RMC:** Rhodes Minnis Church; **RMCS:** Rhodes Minnis Cat Sanctuary; **RR:** Rigden Room; **SMVH:** Stelling Minnis Village Hall, **SNL:** See News Letter for info; **SP:** Sibton Park; **SPCC:** Sibton Park Cricket Club; **TC:** Tayne Centre; **TF:** Tayne Field; **WF:** Well Field

One-Off Events

Date	Time	Event	Where	Tel. No.	Date	Time	Event	Where	Tel. No.
------	------	-------	-------	----------	------	------	-------	-------	----------

**THINGS ARE ON THE MOVE -
PLEASE DOUBLE CHECK THE
DETAILS BEFORE TURNING UP**

Lyminge Festival - 7th to 20th June 2021

Weekly Events

Day	Time	Event	Where	Tel. No.	Day	Time	Event	Where	Tel. No.
Mon	10am	Open House	EVH	863394	Wed ⁵	7pm	French Conversation	KH	862972
Mon	10am	Bridge Club	LBC	863177	Wed	7pm	Tayne Centre Circuits	TC	07925 982995
Mon	10.30am	Lyminge Larks (Singing)	LMC	07951 572920	Wed	7pm	Cantores Dominicae Choir	LMC	07840796383
Mon	11am	Pilates	TC	07825109670	Thurs	10am	RM Toddlers Group	RVH	863096
Mon	2.30pm	Knit and Natter	TC	863049	Thurs	10am	Art Group - Morning	TC	211364
Mon	6.30pm	Ballroom/Latin/Salsa Dancing	TC	07966 751991	Thurs	10.15am	Baby Rhyme Time	LL	03000413131
Mon	6.30pm	Judo Club	LVH	862946	Thurs	2pm	Art Group - Afternoon	TC	862972
Mon	7pm	Pilates	EVH	07951698008	Thurs	2-4pm	Free Computer Help & Guidance	LL	03000413131
Mon	7.30pm	Yoga	RMVH	07977503897	Thurs	6.45pm	Short Mat Bowls	LVH	863842
Tues	2pm	Pickleball	EVH	863819	Thurs	7pm	Pilates	EVH	07951698008
Tues	6.45pm	Short Mat Bowls	LVH	863842	Fri	8am	Chiropody (appointment only)	JC	269602
Wed	10.45am	Singing For Health	JC	862364	Fri	10am	Feel A Fairy Tale Sensory	EVH	07800737936
Wed	11.45am	Pilates	TC	07825109670	Fri	10.15am	Talk Time	LL	03000413131
Wed	2pm	Bingo	EVH	863819	Fri	7.30pm	Ballroom and Salsa Dancing	EVH	07967979610

Monthly Events

When	Time	Event	Where	Tel. No.	When	Time	Event	Where	Tel. No.
1st Mon	2pm	RBL, Elham Valley	St Mary's	862508	1st Thurs	6pm	Refill Station	LVH	
3rd Mon	7.30pm	Etchinghill Film Night	EVH	07544670363	3rd Wed	10am	Family History	LL	03000413131
Last Mon		Parish Council Meeting	SNL	07715221705	4th Wed	2.30pm	RM Circle	RVH	862913
1st Tues	2pm	Lyminge Reading Group	LL	03000413131	Last Wed	7.30pm	Quiz Night	C&H	862694
1st Tues ³	7.30pm	LHS Talk/Event	TC	863879	4th Fri	7.30pm	Beetle Drive	RVH	862616
2nd Tues	2pm	(Railway Readers)	LL	03000413131	Last Fri	1.30pm	Team Quiz	JC	269602
3rd Tues ²	7.30pm	Gardeners' Society	TC	07703149008	1st Sat	10am	Saturday@10	EVH	
Last Tues	2.15pm	Poetry Group	LL	03000413131	2nd Sat	10am	Postling Ch. Coffee Morning	PC	863536
1st Wed	10.30am	Lyminge Friends	RR	862598	3rd Sat	9am	Saturday Market	TC	862710
2nd Wed	10.30am	Mothers Union	NC	862221					

¹ In term time only ² Except Jan and Feb ³ Except Jan, Feb, and trip in Aug ⁴ Except Aug and Dec ⁵ Not held in August



St Mary and St Ethelburga Parish Church, Lyminge

Although we are now legally allowed to hold services, for safety reasons we have decided that, at present, no services will be held in the church building. It will, however, remain open for private prayer during daylight hours 9am – 4.30pm

There are on-line services available on the benefice website: elhamvalleygroupofchurches.co.uk or Alison Dale on 07985025381



CHRISTIANS IN LYMINGE



There are no live services planned for the Lyminge churches at the moment but there are services filmed or on zoom up to the Easter weekend.

Please refer to the website:

www.elhamvalleygroupofchurches.co.uk for all the details, or the newsletter.

Lyminge Methodist Church

Although we cannot meet for religious services, we have not cancelled worship, as we can still worship God when we are caring for others, helping out at Foodbanks, shopping for our neighbours or just smiling or waving to a friend across the street. We are also very aware of the extra shifts being worked in hospitals, nursing homes and vaccine centres.

The Folkestone Foodbank remains open, with increasing demand, and food can be donated at some of our main supermarkets or money donated via their Facebook page. Thank you for your support!

We continue to hold you in our prayers, giving thanks for all the kind, thoughtful people in our community. We will get through this!!



*Symbol based on Anglo-Saxon
button brooch found in the garden of
Korf House, Lyminge*

The Lyminge Association and Pathways To The Past, the group supporting the heritage project involved in the recent excavations of Lyminge Parish Church, have joined forces to support this year's Lyminge Festival. Whilst we appreciate we are currently in the middle of a lockdown with no imminent end to it, we are hopeful that we should be able to enjoy a couple of weeks of fun and memorable events in June.

A small sub-committee has been formed - Rob Baldwin, Peter Barnes, Nancy Benham, Liz Coleman, Dave Hunt-Cook, Derek Smith and Adrian Willcox. It would welcome any groups or individuals from the community who may wish to put on an activity or help run/participate in the event. The theme is to reflect our Anglo-Saxon heritage and it will run from 7th to 20th June.

A provisional programme will be published to enable people gain a feel for the event and think of ways of supporting it. Initial contact can be made through either The Lyminge Association (01303 863737 or pb@pbarnes20.plus.com) or Pathways To The Past (07801 768266 or rob.baldwin50@hotmail.co.uk).

Lyminge Anglo-Saxon Festival

Lyminge Newsletter

Terms & Conditions: Copy deadline for next edition - 18 March 2021.

Please email your copy in to the editor (pb@pbarnes20.plus.com). Your payment must be received before your article or advert can appear in the Newsletter. Please leave your payment along with your name, organisation, telephone number and copy of your ad in a sealed envelope at the Lyminge Library.

Business adverts cost £9.50 per month or £95.00 per year. **Personal and charity adverts and articles** from £3 per month, or £30.00 per year. The annual rate offers 12 entries for the price of 10. Please make cheques payable to '**The Lyminge Association**'. If you do not have email, a typed paper-copy may be left with the payment at the Library (when back open). Printed by Canterbury Print & Mail.

Lyminge Association accepts no liability for the accuracy of the advertisements or subsequent actions arising in conjunction with advertisers in the newsletter.

Further details from Peter Barnes (editor) on 01303 863737 or pb@pbarnes20.plus.com

Etchinghill Update - March 2021

ETCHINGHILL RESIDENTS' ASSOCIATION

WELCOME TO OUR NEW RESIDENTS by David McCombe, Chairman - Etchinghill Residents Association (ERA): dmccombe1@gmail.com or 07939 076617 www.etchinghill.info Facebook – Etchinghill Residents

We have had a number of new residents recently, who may not be aware of the function of the ERA. All villagers are ERA members without charge and we operate with a small committee, supported by volunteers. We focus on matters that enhance the ambience of the area, ranging from installing and maintaining village benches and sign boards, running litter picks, planting of 2 large Christmas trees located by the golf club and at Meriden Park, installing power points for the Christmas lights and we also designed and installed the village sign. In normal times, we have a Christmas lighting up ceremony with live brass band music from the Shepway Academy and serve complimentary festive fayre.

Our successful monthly **Film Nights** held at the village hall are 'on hold' during the pandemic, but why not visit our website and Facebook pages (see above) to keep in touch with other residents and to find out more about village life and the ERA?

SPRING QUIZ - we are running a fundraising quiz (our insurance costs alone are over £500pa) on Friday 23rd April around 7pm. To find out more, and to be included in this Zoom-based light-hearted quiz, please email the chairman stating your interest and to receive more information. The entry fee is only £3 per adult; children under the age of 16 and full time students are free. All proceeds go to ERA funds which are used for the benefit of the community.

ETCHINGHILL VILLAGE HALL Contact - Chairman, John White: jaylwhite@aol.com

The EVH continues to be maintained: heating in the main hall has been kept on throughout lockdowns and weekly checks ensure services are safe and working.

Fire extinguishers, alarm systems and heating boiler have all been checked by various contractors and are all working as intended. The pétanque court to the rear of the Hall has had maintenance work and sleepers replaced. The car park was relined between lockdowns last year and hedges have been recently trimmed. The Hall is ready for when we get the green light to re-open.

OPEN HOUSE Contact - Rodney Watts: rodandjanewatts@gmail.com

All regular Open House attendees continue to have their quiz and puzzles together with a pack of biscuits, delivered to their homes during lockdown. When all our visitors have had both vaccinations and with relevant permissions in place, we hope to restart in June.

FAREWELL TO BARBARA COLLINS-NEWING by Ann Byles.

A few members of Open House congregated, (socially distanced), at the Village Hall to say good-bye to Barbara after many years of dedicated work arranging quizzes, speakers and various other functions; she will be greatly missed. Rodney Watts presented Barbara with flowers, champagne and a wonderful gift of National Garden Centre vouchers donated by members of Open House. We all wish her much happiness in her new surroundings in Minster. Thank you to everyone who contributed.

NEW LYMINGE SURGERY - from The Practice Manager.

Oaklands vaccinated the 10,000th patient on the 11th February. This figure includes priority age groups, all Care homes, Care home staff, Healthcare workers and housebound patients. This is a real achievement considering all 7 practices in the PCN group are still operating their practices and sending clinicians and admin staff to Oaklands to assist with the clinics. The Vaccinations will be repeated with 2nd doses, which currently is 12 weeks from the 1st dose, unless the guidance changes.

ETCHINGHILL NEIGHBOURHOOD WATCH

Join your local Etchinghill Neighbourhood Watch Group and get regular Kent Police local crime updates, fraud and SCAM updates and Trading Standards bulletins. To register for updates, send an email to Jim Parris: family.parris13@btinternet.com your local Neighbourhood Watch coordinator, and you will be added to the local distribution list.

Etchinghill News Coordinator, Jacqui: jacqui.blandford@gmail.com or 07543 966830 Did you know? The Gatekeeper's original building was built in 1595 as 2 separate buildings that were later joined together. The right hand side of the building was added much later.

Editor: pb@pbarnes20.plus.com



District Councillors' Update - March 2021

21 March is Census Day and you will no doubt see many messages about this from the Office of National Statistics. It's designed to be done online and take 10 – 15 minutes per person but paper copies are also available. As the Government uses information from the Census to allocate various grants to local government e.g. how many people over 85 years of age, how many children needing education etc. it matters that the Census is as accurate as possible. As ever, do watch out for those who may try to use the census to scam you. You won't ever be asked for your bank account details or credit card as part of a census. If you've any worries, ask a trusted family member or friend for advice.



Two sites belonging to the District Council in Folkestone, the Civic Centre and Folca, continue to be part of the NHS Covid vaccination programme. You will be contacted by the NHS when it is your turn to be vaccinated but it's worth watching out on social media for updates as progress is rapid and a general invitation was sent to all over 70 to come forward if they had not already received an invitation. As ever, you'll find more information on vaccinations at kentandmedwayccg.nhs.uk/covid19vaccine.

We're sorry that the snow led to some kerbside waste collections being missed. It's been good to see how well the waste collection service has held up despite Covid (both staff fallen prey to Covid or needing to self-isolate) but the weather conditions were simply too treacherous for both the vehicles and staff. When conditions allowed the crews have been concentrating on collecting the food waste and the residual waste with residents asked to store any missed recycling till their next regular collection.

The cold weather also saw the council activate SWEP (Severe Weather Emergency Protocol) whereby rough sleepers are offered accommodation. We have 15 rough sleepers identified in our district and all but one accepted the offer. There is of course help offered year-round but rough sleepers often have problems with substance abuse or anti-social behaviour that make it hard for them to accept help.

We've written extensively in past newsletters about the process that establishes where new homes, businesses and leisure facilities can be built. The Core Strategy sets this out and includes plans for Otterpool Park the garden town which will take the lion's share of the homes that are required for our district. The Public Examination (by an independent Planning Inspector) of the Core Strategy is nearly complete with just a final session on transport outstanding. You can see all the papers and the hearing in front of the Planning Inspector on the council's website.

Susan attended the online Try Angle Awards event on 29 January where young people from the Folkestone & Hythe area were recognised for achievement in a wide number of categories. We're delighted to report that Lyminge resident and stalwart of the Christmas Lunch Club, Claire Wood-Alexander, won the award for Community Action. Well done Claire.

We are also pleased to confirm that we have both allocated grants from our ward funds to 1st Lyminge Scouts to replace the main doors and for an access ramp that is fully compliant with current legislative requirements. The total is £2,608. It's the largest grant we've made but we know the hut is well used by several groups and this work will make the hut properly accessible for all.

We are happy to hear from residents about any of the above or other council issues you wish to raise.

Jenny Hollingsbee (Jenny.hollingsbee@folkestone-hythe.gov.uk 07887918458) & Susan Carey (susan.carey@folkestone-hythe.gov.uk 01303 670561) - your district councillors for North Downs West, Folkestone and Hythe District Council

In aid of the LORD WHISKY SANCTUARY FUND
(Registered Charity 283483)
Park House Animal Sanctuary
Stelling Minnis CT4 6AN. Tel: 01303 862622
www.lordwhisky.co.uk

HELP NEEDED

We are planning to have a lovely boot fair later in the summer which we know lots of people are looking forward to.

However, due to age and health reasons, many of our loyal helpers, who have been with us for many years, have had to hang up their boots.

If we are to continue, which we intend to, we need able-bodied people with lots of enthusiasm to come forward with new ideas to make these events even more enjoyable.

If you are interested, please either drop us a line or email us at lord.whisky@btinternet.com

Coach & Horses



Mother's Day - 14 March 2021

Here is a chance to give your Mum a treat. We are providing our very successful cream teas, delivered to your address. Please use Messenger to book the number of teas you need, the time you would like it delivered along with your contact details (phone number and/or email address).



Should you wish to have a cream tea on any other occasion, please contact Emily who will be more than willing to take your order.

Emily and Fred.

For bookings and any other help needed please phone 01303 901011 or check Facebook page 'Coach & Horses'





Pathways to the Past

We are now working in partnership with the Lyminge Association to plan the Lyminge Festival which, Covid permitting, will take place from 7 to 20 June and will this year have an Anglo-Saxon theme. This will be the event that brings our project to a conclusion.

We are planning for a number of project work streams to be complete in time for the festival. There will be new artworks created by local artists installed in and around the church and these will be unveiled by Bishop Rose, the Bishop of Dover, on 12 June. By then, we will also have installed the new information panels providing detail about the various archaeological excavations that have taken place around the village. There will also be a new display in the church, incorporating a

touchscreen that will give access to 3D digital models showing how the church has developed through time. Separately, we are partnering with Lyminge Historical Society and Lyminge Parish Council to create new noticeboard displays in the Library car park.

In the meantime, everyone can now share the results of the huge planting effort in the churchyard last Autumn. If you want to see what 75kg of daffodil bulbs looks like growing, then go and take a look at the area south of the flying buttress. This is planted with the variety St Keverne. The bank to the right as you enter the churchyard is planted with the dwarf daffodil variety Tete a Tete.

We are still looking for funding to help us complete this project. If you would like to donate, then please go to our PayPal giving page at: https://www.paypal.com/donate?hosted_button_id=MRXPPMCTDCYWC, or scan the QR code alongside. You can make a gift by card or through PayPal, and if you are a taxpayer, you can add 25% to your donation through Gift Aid. PayPal does not charge us for this, so all your donation will go towards the project. If you have any questions about the project, you can email us at geopaethas@gmail.com.



Fifth Trust Update - www.fifthtrust.co.uk

By the time you read this the trust will have commenced the re-development of its skills centre in Barham. After six years of fundraising, we are able to start building work, which will culminate in three new buildings to replace our existing wooden huts. It is thanks to many individuals, charitable trusts and the lottery fund that we have raised donations and pledges amounting to £1.5million. Although we still have a way

to go to raise the full amount needed, we are now in a position for the initial works to start.

Our garden centre at the Vineyard is now re-opened on Saturdays 10-4pm (weekdays 11-3pm). Check our website (above) for latest news on opening times.

Write 300ish words on any subject - then send it to the editor

LITTLE EGRETS - After the Christmas snow thawed we ran our dog in Kearsney Abbey, noting on the way a heron, still and grey in the gloom. Soon another blizzard sprang up and we returned, finding our 'heron' smaller and apparently covered in fresh snow. It was, of course, a different and rarer heron, a Little Egret with brilliant white body, distinctive yellow feet and black legs.

For the first three days of the New Year our house gave a grandstand view of the bird, glowing white against the muddy riverbank and feeding nervously in the shallows. Local papers reported later that a pair of egrets had taken up residence on Barton Path, in Dover, a first for this location. The Little Egret (*Egretta garzetta*) is another example of a species that has increased dramatically in the UK recently, perhaps due to global warming.

In the 1950s its winter quarters crept north from Spain, through France, to reach Brownsea Island in Poole Harbour in 1996 and County Cork in 1997. Before this expansion, the Little Egret's main claim to fame was as supplier of plumes, particularly for hats, in the 19th and early 20th centuries. Cocker and Mabey, in *Birds Britannica*, describe how egret feathers sometimes traded at 20 times the value of silver weight-for-weight. Some feathers were obtained humanely from egret farms, where birds were cared for and plucked four times a year. However the main source of imported feathers was from the killing of millions of wild egrets, a slaughter that led directly to the formation of the Royal Society for the Protection of Birds in 1889 and the banning of the plume trade in 1920. Appropriately the RSPB Nature Reserve at Dungeness has long been the best local site for viewing these lovely birds. (February 2006) *Steve Osborne*



Photo by Noah King

Write 300ish words on any subject - then send it to the editor



We are looking forward to the time we can officially meet up again but until the guidelines allow we cannot restart our usual programme of events. Planning is still going on in readiness for when we can meet again and ideas for future events are always welcome



March is the month to really make a start with sowing seeds and the longer days should encourage many spring flowers into bloom to cheer us up.

Vegetable Growing Workshops

Our second 2021 workshop 'Seeds and Sowing' will be held on Sunday 14th March, between 14.30 and 16.30 via Zoom. **To book your place please email: thoughtfulfoodgroup@gmail.com**

All general enquiries to: lymingegardeners@gmail.com

MOTORCYCLES WANTED



MOT failures, non-runner, unfinished projects, damaged bikes, write-offs. From scooters to field bikes to 50% complete bikes. I will collect, remove and pay cash.

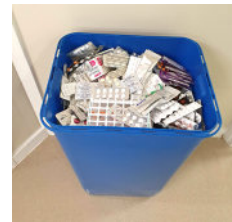
Telephone 01303 627021

Waste Not, Want Not...!!

This is a medicine waste bin of returns that have come back to The Surgery, Lyminge that patients have said they no longer require, for a variety of reasons

This is sometimes unavoidable as medication is changed from time to time. However, in these instances there should really be just 1 month's waste.

In one instance recently, a patient returned 6 items that they had requested each month for over a year. It was returned, following a clear out as they were moving house. Essentially this medication was not needed and never used at considerable cost of thousands of pounds to NHS.



Please Don't Waste Money On Medicines You Don't Need

Rhodes Minnis Circle

We hope you have all managed to have at least your 1st vaccination.

Keep safe and warm during this icy weather.

Thinking of you and looking forward to the Spring.

Marion. 862913



***Lyminge
Historical
Society***



Hopefully now the first Covid-19 vaccination is well under way and we can hope the Government will ease the draconian restrictions to enable us to see loved ones again very soon. However, large gatherings will not resume until further notice, including our own monthly meetings. As ever, Government guidelines will determine the way forward.

Watch the Notice Boards and the Lyminge Newsletter for further updates. Stay safe and well.

Lyminge Historical Society Committee

**Lyminge a history can be purchased individually through
the Premier Food Store**

Plus: purchase Parts 1-5 as a bundle for £22 or Parts 1-10 for £50*

To take advantage of the offer please call Daphne Andrews on 01303 862865. This bundle offer is not available from the shop.

*Postage and packaging extra

Garden Safari 2021

Saturday 12th June - Sunday 13th June (if Boris allows)

I expect you gardeners are glad to see the snow has gone; I know I certainly am. I had anemones in flower prior to the snow and they got buried, I thought I had lost them but a few days after the snow had gone they were in full bloom again. Mother Nature's wonderful.

I know we are still restricted with COVID regulations. However, I would like to hear from you if you would be interested in opening your garden this year, always assuming we are allowed to. The dates are 12th and 13th June. So, to those of you who have opened your gardens previously and to anyone who would like to open theirs for the first time, please give me a call to reserve your space or with any questions you may have.

Contact: Ray Smith 01303 863856 or rscalver@gmail.com





SPRINGRISE

CANINE CARE SERVICES

NEW PRODUCT LAUNCH - "SPRING RISE" PET FOOD RANGE

Spring Rise is excited to inform you of the launch of "My Own Label" dog food range. Over the past few months, I have been working hard to find a complete dog food that provides highly nutritious, ethically sourced, human grade fresh ingredients and a diet that can combine all the benefits of both raw and dry food. It was exciting to discover these criteria could be met using Freshtrusion™ technology, whereby my dog food ingredients (freshly prepared meats, vegetables and botanicals) are gently cooked at 90°C at low pressure which keeps in the freshness and protects the proteins, allowing the food to retain its full flavour and provide a highly nutritious food for your pet!

Spring Rise dog food provides a range of delicious dishes including, duck with parsnip, beetroot, orange, asparagus and pumpkin for those dogs with digestive issues or trout, salmon, sweet potato and asparagus! There are also lots and lots of mouth-watering treats such as calming and dental functional treats, along with healthy training treats and a variety of natural treats from my **Doggie Deli** to name a few!!!

If you have any special dietary requests, please let me know and I will discuss your requirements with the nutritionist and hopefully find a meal to suit your dog!!

.....and what's more, I can deliver to your door!!

***TOUCHANGO K9 TRAINING TOYS AND CANINE ENRICHMENT BOXES ***

Touchango K9 training toys are locally, handmade - bright, funky and durable, designed to encourage interactive play between you and your dog. The toys are handmade using carefully selected durable products making beautiful, super tough toys for the strongest of tugging dogs.... and all the balls used are non-toxic and free from nasty chemicals. Some of the toys are made with sheepskin or rabbit fur which is responsibly sourced within the UK. All can be purchased from **Spring Rise Pet Store**.

Spring Rise Enrichment Boxes are designed to "enrich/enhance the quality of your dog's daily life by stimulating their mental and physical capabilities". **Spring Rise Enrichment boxes** include a variety of items that are specifically designed to stimulate the six categories of enrichment: sensory, feeding, environment, toys/puzzles, social and training. Therefore, the contents will include any of the following: a puzzle toy, likimat, interactive toy, information handouts for basic fun training, how to engage your dog with interactive walks and/or booklets for activities such as Freework or Tellington TTouch along with ideas for a sensory garden. Also included in the box will be some natural treats that will involve chewing, training treats and the box and packing can be used as a snuffle box!

Contact: Spring Rise Pet Store

Maple Cottage, Westfield Lane, Etchinghill, Folkestone, Kent. CT18 8BZ

Mobile: 07582407637 : Telephone: 01303 863090 : Email: susannahparkin@googlemail.com

www.caninecare.thespringrise.co.uk

Letters To The Editor.....

Thank you to all of Etchinghill and Lyminge Residents for their very kind gifts and cards. I am also very grateful for everyone's good wishes and very moved by everyone's kindness and messages of farewell. I never realised I knew so many people!

By the time you read this I will have departed our lovely hamlet and all of you gorgeous people. It is with deep sadness and some regrets that I say goodbye but it is time for a new chapter in my life. "I will be back" as someone said before me, as soon as the "lockdown" is lifted, and hope to see some of you at Open House in the future. "Au Revoir" to you all.

Barbara Collins-Newing



Letters and Comments To The Editor.....

A number of enquiries have come through relating to the current activity on the proposed Pentland Homes site. The arrival of heavy equipment and the moving of considerable amounts of soil generated many questions both verbal and in emails.

In essence they were asking the same thing **"What is going on in the area alongside the New Surgery in Lyminge?"**

Pentland Homes informed us (19 Feb 21) that *"Our Lyminge site is currently undergoing a full archaeological excavation, with a team of archaeologists currently 3 weeks into an anticipated 8-week programme. We are working closely with the team to ensure they have full access and support during this period of works."*



Photograph taken from the New Surgery looking towards the golf club, with the main road and Broadstreet House on the right.

SPRING PHOTO CHALLENGE

As we all look ahead to brighter times, we're inviting local young photographers to enter our Spring Photo Challenge.

When you're out getting your exercise in the coming weeks, keep an eye out for the first signs of Spring and capture a shot to send to us.

Perhaps you'll spy some bright new blossom, a crisp white Snowdrop, or a Daffodil emerging from the soil. Whatever makes you feel like Spring is on the way, get snapping!

All entries will go into a prize draw, with the chance to win one of 3 bundles of Easter goodies.

To enter just email your photo to lymingeyouthaction@gmail.com, with the first name and age of the entrant. We would also ask for a small donation of £3 to the Tayne Field park redevelopment project. You can donate via our website at lymingepark.com.

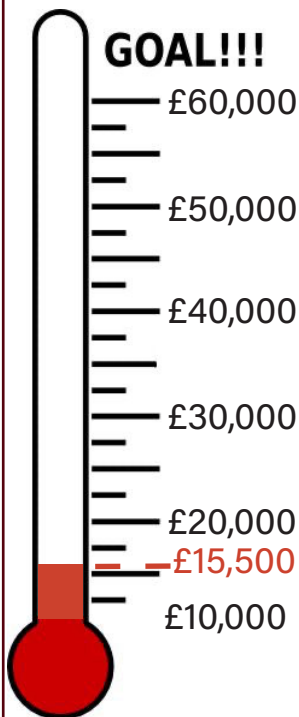
We also hope to run a special village Easter egg hunt at the end of the month, but this will depend on the Covid rules in place at the time. Keep an eye on our Facebook page for more on that later in the month.

In other news, we would like to say a huge thank you to the Lyminge Association for donating £3,159 to the project, which will pay for benches within the park area. It is wonderful to have the support of the community being shown in so many ways. We are very grateful to them for their generous donation.

All the best,
Lyminge Youth Action



GOAL!!!



Lyminge Primary School

The school will be looking for a cleaner as one of our team is sadly moving away.

12.5 hours per week 3.30-6pm Monday to Friday

38 weeks per year (paid for 43 weeks)

Pay Scale: Kent Range 3 £5,025.67 (Full Time Equivalent £18,039)

If you are interested, please contact Matt or Carol at the school for further information

Phone: 01303 862367 Email: office@lyminge.kent.sch.uk

(This job is subject to an enhanced DBS check and the Right to Work in the UK)

What weather we've had.....



The recent cold weather provided spectacular sights such as the 6 foot icicles hanging from the gutters of the parish church (thanks to Chris Keep)

The cricket pitch at Sibton Park became a lake more suitable for water polo. The bird spotting enthusiasts were given plenty of opportunity to see some more unusual birds as they waded through the shallows. (See page 16)





Rainbow Centre

Wish to appoint a Homeless Support Service Manager

Salary: £28,000 per annum for a 37-hour week

The Folkestone Rainbow Centre is a charity supporting people facing hardships and deprivation in Folkestone and Hythe district.

We are seeking an experienced and proactive manager with a heart for working with those who are, or are at risk of becoming, homeless. Responsible for managing a team of staff and volunteers to deliver our established Homeless Support Service and Winter Shelter, he/she will also have the lead role in developing new initiatives already in preparation to enhance our offer to those in need.

If you are innovative and thrive working within a small team, then this role is for you.

For further details and an application pack

Please contact:

Folkestone Rainbow Centre
By email theresa@rainbow-centre.org or Telephone 01303 850733
Please note: CVs not accepted

If you wish to have an informal discussion about the role before applying, please contact us.

Closing date for applications is 15 March 2021

Interviews will take place during week beginning 22 March 2021

Any offer of employment will be subject to the receipt of a satisfactory enhanced DBS disclosure and references. We are an equal opportunities employer.

www.rainbow-centre.org

With thanks to Marilyn, Brady Road who forwarded: The Day Is Today... The Moment Is Now...

Barely the day started and ... It's already six in the evening.
Barely arrived on Monday and it's already Friday.
... and the month is already over.
... the year is almost over.
... and already 40, 50 or 60 years of our lives have passed.
... and we realised that we lost our parents, friends.
And we realise it's too late to go back...
So... let's try, despite everything, to enjoy the remaining time...
Let's keep looking for activities that we like...
Let's put some colour in our grey...
Let's smile at the little things in life that put balm in our hearts.
And despite everything, we must continue to enjoy with serenity this time we have left.
Let's try to eliminate the after's...
I'm doing it after...
I'll say after...
I'll think about it after...
We leave everything for later like "after" is ours.
Because what we don't understand is that:
Afterwards, the coffee gets cold...
Afterwards, priorities change...
Afterwards the charm is broken...
Afterwards, health passes...
Afterwards, the kids grow up...
Afterwards parents get old...
Afterwards, promises are forgotten...
Afterwards, the day becomes the night...
Afterwards life ends...
And then it's often too late ...
Because still waiting see you later, we can lose the best moment,
The best experiences, best friends,
The best family...

The day is today... The moment is now...

Horses in the Field Opposite Sibton Park

Considerable interest was shown in the horses thought to be abandoned in the field opposite Sibton Park. They have been of some concern for a considerable time, but this concern was heightened more recently during the very bad weather when the field was covered with snow and the water froze. Needless to say, the community came together to purchase a bale of meadow hay, provide two blankets and deliver fresh water.

The RSPCA now have appointed a liaison officer (Lucy - 07936911613), the owners have been contacted and the horses are being better looked after, with thanks from two very grateful horses!!



Help Needed to Plant Trees and Shrubs



Georgina Cooper, working with GEECO (elentfx.com) whose aim is "to support ecological enterprises who are or wish to create positive change throughout the community", has been given a community tree pack of 105 sapling trees and 30 sapling shrubs by the Woodland Trust to plant on the land opposite Sibton Park. She would be very pleased if able and willing individuals would give her a hand planting them sometime in March.

The time and date are dependent on the weather and the arrival of the vegetation. Please contact Georgina with your details and she will arrange a suitable date and time.

Email: cropgeorgina@yahoo.co.uk

Lyminge Village Hall needs your support!

"Many hands make light work" and that's certainly the case with the Lyminge Village Hall

Lyminge Village Hall really needs your help and support. Could you be one of those willing to help and support your community?

At a time when we are realising how much our community means to us all, we are reaching out to everybody to ask for new volunteers to join the committee of the Lyminge Village Hall. Although currently closed to most clubs and bookings because of the Covid pandemic, the Lyminge Preschool continues operating and providing vital support to key-worker parents throughout the pandemic.

During these quieter moments the committee has focused their energy on reviewing maintenance and health and safety matters. We are a small management committee of only six. There should be nine and sadly it will be losing Vicky at the next AGM, due to the demands of her nursing job, working on the vaccination programme and home-schooling two children. We are full of gratitude to Vicky who has been a fantastic member of the team, taking minutes at meetings and helping organise fund-raisers in the pre-Covid times. Many of the remaining committee members also have young families, but find that volunteering on the committee gives them a welcome change of scenery from day-to-day life as well as providing a warm feeling of doing something positive for the community.

"It's so easy to criticise others, but so rewarding being able to volunteer and enable change for the better. This community is invaluable. So many people look to Lyminge village as a role model and would love to live here" said a long standing resident.

So, it is with this plea that we outline several of the roles that we need to fill:

- **Minute Secretary** – to record minutes of meetings and send these out to the committee, the Parish Council and regular hirers. We meet normally monthly and the minutes usually fill 2 pages of A4
- **Booking Secretary** – to be responsible for monitoring the Hall's mobile phone booking line and email address, answer enquiries and take bookings for the Hall. Enquires are about 6 a month on average.
- **Health and Safety Rep** – to be responsible for keeping the fire safety and other H&S paperwork in order. To support with the planned upgrade of the Fire Safety systems.

We would of course welcome anyone with financial expertise, project management or buildings maintenance skills to support the team. Please don't hesitate to get in touch either via our booking line **07497 625741** or email **lvh.bookings@outlook.com**

The current committee of Trustees look forward to hearing back from you - Owen Standen (Chair), Jane Michotte (Vice Chair), Kate Bennett (Treasurer), Sandra Luck (Preschool Rep), Vicky Haley and Penny Stephens.

Lyminge Friends - March 2021

No meetings or visits planned until the summer at the earliest, due to Covid19. We will advise when the situation changes.

We hope everyone is well and living the best life they can under the circumstances. Keep well and stay safe.

Meetings are 10.30am - 12.30pm in the Rigden Room of the Tayne Centre. Entry for 2021 is £3.00 which includes light refreshments. We are a friendly social group and welcome new members so just drop into one of our meetings, or, if you'd like to talk to one of us first, please call 863500.



Any Clues???

Simone Gledhill would like to know what was originally engraved on this stone to be found outside the Coach & Horses pub, in Lyminge?

Answers to The Editor, pb@pbarnes20.plus.com



Editor: pb@pbarnes20.plus.com



Community Support Hub

Our fantastic team of volunteers have now logged and recorded over 10,000 hours of time donated, towards helping the local community, since March 2020. This is a huge amount, and in truth, probably only a minimum amount of time because not all volunteers log every aspect of what they do. We are sure you will join us in thanking each of the amazing Age UK Hythe and Lyminge / Community Hub Volunteers for their incredible commitment to this Community.

We continue to offer the following services during the Covid-19 lockdown in March 2021:

- Home Meal Delivery
- Bespoke Shopping
- Prescription Delivery
- Befriending calls
- Independent Living – support with jobs at home which may have become difficult
- Laundry Service
- IT support
- Dementia Support
- Odd Jobs
- Café in Hythe open for takeaways
- Chiropody continues at both Centres (hairdressing to be paused)
- Hearing Aid Batteries supply

Please call us on 01303 269602 for further information



LYMINGE PARISH COUNCIL

March 2021 Newsletter

Forthcoming Council and Committee Agendas are displayed on the Council notice boards in Lyminge Station Road car park, the Rhodes Minnis bus shelter and the entrance to the Village Hall car park, Etchinghill. Agendas and minutes are published on the Council's website www.lymingepc.kentparishes.gov.uk and Facebook page. We invite you to read the minutes online or on the noticeboards which may provide the information you are seeking regarding a particular item, but correspondence is always welcome from parishioners and can be sent to the Clerk at the addresses given on the next page.

INCREASE IN THE LYMINGE PARISH COUNCIL PRECEPT FOR 2021/2022

The **Precept** is the part of your annual **Council Tax** that is allocated to Lyminge Parish Council. The Precept allows us to look after the various assets we own on behalf of the community, such as Tayne Field, Court Lodge Green (the "Bumpy Field") and the allotments at Rhodes Minnis. We can also use this money to make improvements in the parish. In the January Newsletter, we explained the projects the Parish Council is planning to undertake in the new financial year starting in April. We have focused on what we think will add most value to the lives of residents. Thus, for example, we are intending to give support to the Lyminge Environmental Group who are pursuing various initiatives under the Green Agenda and to Lyminge Youth Action who are leading on renewing the play park on Tayne Field, as well as planning to renew the running track in Jubilee Field and restore St Eadburg's Well in Well Field.

In order to deliver such improvements, we have to raise the money to pay for the work to be done. Thus when you receive your Council Tax Bill for 2021/22 towards the end of March, you will see that the Parish Council Precept will increase in the next financial year.

The increase in Council Tax is expressed in terms of what the average household pays. The average household is deemed to live in a Band D property, and the Council Tax for such a property is treated as the starting point against which any increase is measured. This is known as the **Tax Base**.

Unusually, the Tax Base for the current year 2020/21 has reduced during the year. The reason is that the **Council Tax Reduction Scheme** has reduced the Council Tax bill of

many households during the Covid pandemic. This is a one-off tax relief, so people on average will have to pay more Council Tax in 2021/22 than they have in the current year, even to give Councils exactly the same amount of income as they had this year. This small increase in the amount each household will pay next year has to be added to any increase that arises from the Council seeking to improve services.

We are telling you this to help explain the numbers you will find on your Council tax bill. But we also need to keep the absolute amounts involved in perspective. The Parish Council Precept for a Band D property in 2021/22 will be 26.7% higher, compared with the Precept for 2020/21. The amount of this increase for each Band D household is 24p per week. While no one wants to pay more tax, we believe that the actual extra amount you will pay to the Parish Council is still a small and reasonable figure and represents exceptional value for money.

Rob Baldwin, Chair, Finance and Administration Committee

CASUAL VACANCY Due to the recent resignation of Councillor Mike Packman, there is currently a vacancy for a new council member. If you are interested in applying, or wish to understand more about what the role of councillor entails please contact the clerk at lymingepc@btinternet.com.

The deadline for applying is Sunday 14th March 2021.

THANK YOU The council wish to thank Mike Packman for all his hard work and input over the past 2 years and wish him well for the future.

TAYNE FIELD TREE WORKS You may have seen recent tree works being undertaken around the boundary of the Coach and Horses. Some of this work was to reduce the shading and overhanging branches in the pub garden and some was in response to a request from Highways regarding the overhanging in Well Road. Some smaller trees and shrubs have been cut back along the field's border with Church Road, some of which were sadly rotten. The overall aim being to plant some native hedging along the boundary in the very near future.

The Parish Council commissioned a full tree report on all its trees in 2020 and all works are carried out in accordance with the recommendations made and at an appropriate time of year.



ETHELBURGA GROVE Following the survey of trees along Ethelburga Grove, there will be some general maintenance works being undertaken this month. We would ask that residents whose properties back onto the Grove do not leave tree cuttings at the side of the bridleway and do not damage trees and shrubbery when undertaking new fencing or boundary works.

GRANTS The council are pleased to have recently approved Grant Applications from Sibton Park Cricket Club providing funds towards essential repairs and to Lyminge Historical Society with an award towards their new website.

NOTICE BOARDS New noticeboards have been ordered in readiness for the planned upgrade in the Station Road Car Park.

ST EADBURG'S WELL (FORMERLY KNOWN AS ST ETHELBURGA'S WELL) As mentioned in January's Newsletter the Well House is in need of substantial repair. 2 quotations have been obtained and we are currently awaiting a third, for consideration by the council. The aim is for work to start before there is any further deterioration.



SCAMS remain a constant problem, especially with the Covid pandemic and fraudsters preying on vulnerable people. For advice on these or any community safety issues please contact Gary Harrison, KCC Community Warden, Elham Valley on 07977 982185 or PCSO Nicholas Hazell on 101.

EXTERNAL AUDIT The council was pleased to receive its external audit report for 2019-2020 from PKF Littlejohn LLP which gave us a clean bill of health with no issues reported.

REPLACEMENT LITTER BIN – NEW BARN CORNER (NEXT TO BUS SHELTER)

An order has been placed for a replacement bin which should be installed shortly

DEFIBRILLATORS Please note there is currently no defibrillator in Station Road Car Park, Lyminge. There is still one outside the entrance to Lyminge village hall.

Egrets in the Parish article – February Newsletter With apologies to Cllr. Tony King who was incorrectly named as Cllr. Tom King.

MARCH COUNCIL MEETING DATES:

Finance and Administration - Monday 8th March at 7.00pm via Zoom

Full Council – Wednesday 31st March at 7.30pm via Zoom.

Members of the public are welcome to attend the virtual meetings. There will be a specific opportunity to comment upon items on the agenda, or raise other matters. Anyone who wishes to attend should contact the clerk for details of how to join the meeting.

Cherri Norman, Clerk and Responsible Financial Officer

Correspondence Address: Lyminge Parish Council, PO Box 1159, Canterbury, Kent CT1 9PR

Telephone: 07715 221 705 Email: lymingepc@btinternet.com

www.lymingepc.kentparishes.gov.uk

www.facebook.com/LymingeParishCouncil

Lyminge Climate Action



Thoughtful Food....

...is a group of local volunteers looking at our food, and how this impacts climate change. Our aims are to support people to produce more of their own food, and to shop locally, sourcing seasonal produce. We also run a community allotment in Lyminge and welcome new members.

Contact: thoughtfulfoodgroup@gmail.com or on Facebook and Instagram @thoughtfulfoodgroup

We are meeting on the first Tuesday evening of the month via Zoom - please email if you would like to attend.

What to do now...March

Thoughtful Food member, and Lyminge Gardeners' Society Chair, Anne Gould, has kindly set out her thoughts on what to do in our gardens in March...

As I write this the scene outside is gloriously white and crisp! Hopefully that will all be gone by the time you read this!

What not to do in March... Sow summer seeds too early – you will only have to cosset them and keep them warm. They are 'designed' to germinate and grow quickly in the right conditions.

What you can get started on.... Well March is one of the busiest months for getting both flowers and vegetables going under cover for planting out in April / May and some hardier vegetables outside.

Sow undercover as for February plus peas, Boltardy beetroot, celery & celeriac mid month.

With warmth (ie on an indoor windowsill but not in direct sun) tomatoes – sow them before mid-month for undercover (in a greenhouse) cropping and melon at month's end (for growing in the greenhouse or in your conservatory).

Sow outside: broad beans, garlic if not already, and after mid-month sow lettuce, spinach, peas, onion, salad onion, early brassicas, parsley, coriander, dill, parsnips, first early potato late March.

Potatoes: Traditionally planted at Easter which this year is on April 4th!

First Early varieties. Small, new potatoes (suggested varieties Arran Pilot, Rocket, Maris Bard, Pentland Javelin)

- Plant up from the end of February to late May.
- Harvest approximately 10 weeks from planting.
- Grow in bags, containers or in the ground.
- Benefit from 'chitting' prior to planting.

Second Early: Small, new potatoes. (suggested varieties Charlotte, Maris Peer, Anya, Kestrel)

- Plant up from March to late May.
- Harvest approximately 13 weeks from planting.
- Grow in bags, containers or in the ground.
- Benefit from 'chitting' prior to planting.

Main Crop: (If you have lots of space!) Larger potatoes, ideal for baking and roasting. (suggested varieties Maris Piper, Desiree, (Red), King Edward, Cara).

- Plant up from March to mid May.
- Ready to harvest approximately 20 weeks from planting.
- Grow in the ground where there is more room for best results, but can also be grown in bags and containers.
- Benefit from 'chitting' prior to planting.

Helpful flowers in amongst the veggies! These are called **HARDY ANNUALS** because they do their whole life cycle in one season. The following are stalwarts of the garden and help out with dissuading the nasties and encouraging the pollinators into your garden. You can get these all started in pots or trays undercover but it doesn't have to be extremely warm for these to germinate.

Sweet Peas, Sunflowers, Cosmos, Nicotiana, Marigolds, Cornflowers, Poppies, Zinnia. Also pollinating mixes are very good. Sow them in block or seed trays (old meat trays are v good – with drainage holes!!)

Acknowledgments and Recommendations. Charles Dowding's Vegetable Diary and Calendar. (Available from www.charlesdowding.co.uk).

(See over the page for details on **Vegetable Growing Workshops**).

Vegetable Growing Workshops

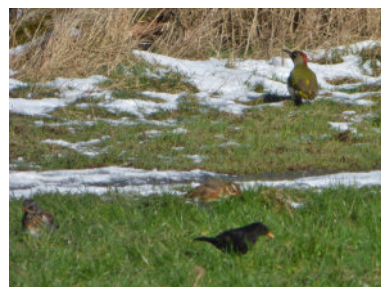
We are now up and running with this year's workshop series to support new and inexperienced vegetable gardeners, with our first one, **Get Ready to Grow**, was held on Sunday 21st February via Zoom. Delegates learned how to assess their own site, and how to utilise nature's 'engines' (water, soil, composting) to support their growing. We are looking forward to moving on to our **Seeds and Sowing** workshop on Sunday 14th March, with those warmer and lighter days on the way to really get things going in our gardens.

A Winter Oasis in North Lyminge for Lapwings, Redwings, Snipe, and Plenty More

The "Beast from the East 2" brought us a week of freezing temperatures and a decent covering of snow we haven't seen for at least 8 years. Local children (and a few adventurous adults) were sledging down Court Lodge Green from the 7th Feb until Valentine's Day.

The frozen landscape also meant fewer opportunities for local wildlife to find food, leading to an influx of birds to our gardens and parks in search of sustenance. Redwings in particular were spotted all over Lyminge, foraging on apples, ivy berries, hawthorn haws, and in any bare ground for worms, joined by smaller numbers of fieldfares, mistle thrushes, and song thrushes. Yellowhammers, siskins, bramblings, blackcaps and even a woodcock were reported from gardens, and sightings of the popular lapwing were suddenly flooding in from Sibton Park, Longage Hill, Rhodes Minnis, and the water meadow of North Lyminge. Indeed the fields of North Lyminge became a week-long winter oasis for local birds. Dozens of redwings, song thrushes, blackbirds, starlings, meadow pipits, a few fieldfares, a couple of pied wagtails and a green woodpecker, all foraged together in a few small snow-free patches of the water meadow, along with a few lapwings when they weren't disturbed, and the resident little egrets (thanks to Noah King for the photo top right) and grey wagtails.

However, the main aggregation of lapwings was in the flooded areas of the field to the east. The remarkable view through a gap in the hedge was a stunning vista of snow, ice, and hundreds of birds congregated in and around an unfrozen wetland either side of the central fence line. Lapwings mingled with a flock of snipe, a group of teal, and several rather uncommon but badly named common gulls, all four species rarely seen around here, along with regulars such as starlings, rooks, crows, jackdaws, black-headed and herring gulls. The remarkable scene was reminiscent of a savannah watering hole. The snipe, winter visitors from northern Europe, remained only a couple of days, the teals for several. The lapwings, also known as peewits based on their calls, were the most popular for many observers; sadly their numbers in the UK have halved since the 1970s and they are considered to be near threatened globally and a high conservation priority in the UK. The presence of these iconic birds in the parish this past month has been a pleasure for many of us. *Tony King, Feb 2021*



Have you seen a Firecrest?

Please let us know if you've seen a firecrest in the parish, or indeed any other interesting birds, especially any that are not yet included on our various parish eBird monitoring pages. Please search eBird.org or email us on lymingebiodiversity@gmail.com. Huge thanks to the new contributors to our Rhodes Minnis eBird page; the species list has grown from 22 to 47 species since the last newsletter. Well done all, and please keep up the good work.



Snow came with a vengeance recently, something not seen for sometime and which captured the imagination of many of the community who sent in a large number of excellent photographs - for which I'm very grateful. I will look to include them in this or future editions of the newsletter.

*These photographs and text are a contribution from **Margaret Saunders***



Sky blends with land today, there is no visible distinction. The sky is grey, heavy and full of snow, which it is sending earthwards in a furious flurry - Storm Darcy has arrived and with it, cold snow laden air coming down from the Arctic through Scandinavia and hitting the UK on its eastern flank. Overnight snow makes for a world transformed, with more falling to add to the layer already laid down. Everyday objects suddenly become beautiful and interesting and a tranquillity descends, deadening all but the joyful shouts of children as they toboggan down the slopes. Boughs, branches and twigs all become laden with snow, frozen in place so that even the wind cannot dislodge them, slightly sheltered as they are by a bank of much taller trees to the north. Puddles and newly formed lakes begin to lose their shine as ice starts to form, making the seagulls appear to be walking on water.

Snow stings my face as I walk northwards. Small patches of waterlogged grass show dark against the surrounding snow and I see bird tracks leading to and from these patches indicating that they have become an important food source in this frozen field. It is a shadowless and monochrome landscape where everything is defined as black, grey or white, the sun seeming to play very little part in the scene apart from the giving of general daylight. My hands quickly become painfully cold as I stop to photograph this and that, so I turn back, the wind now behind me and not constantly trying to get into every gap in my clothing, or sting my face with its load.

Tree trunks are highlighted with snow as they face into the bitter snow-filled wind, adding to the austerity and beauty of the scene. All signs of Spring that I optimistically thought I saw a few days previously, banished. This is Winter, and no mistake.





Outdoor Theatre in Lyminge!

At last! Something to get excited about! The wonderful Rude Mechanicals are planning to perform on **Tayne Field** on **Sunday 25th July at 7.30pm** (subject to Lyminge Parish Council approval).

It will be something to give us a good laugh and raise our spirits – and we all need that!

The play will be **'Little Lily Harley'**, postponed from last year, and is about Charlie Chaplin's childhood in Lambeth. With a drunken but charismatic actor father who was rarely around & a beautiful young actress of a mother who had three children by different fathers, he had to learn along-side his big brother Sydney how to survive a very precarious existence. Sometimes fostered by other people, sometimes in a school for destitute children, sometimes separated from Sydney & sometimes living on the street (as a child!), he nevertheless managed to triumph over all this to become arguably the greatest film actor ever.

Pete Talbot, the director, says, "When I wrote the play in 2019, I could not have known how apt it would be for today. The message of hope, triumph over pain, through the imagination and laughter, is really important for today because people are desperate to see theatre and escape for a while. That is why we must do it."

Tickets are available online from The Rudes website from 1st March. Because of social distancing spaces will be limited, so **BOOK EARLY!** You will get your money back if you can't subsequently come. Prices will favour people booking in bubbles of four or more. Go to their website for details. It will make you cry, release all that tension and laugh out loud. Full of music hall and silent movie magic with a great team of professional actor/musicians! Featuring Chaplin's powerful classic music, 'Smile! The company say that the date might be delayed because we don't know how the rules may change but that it is 'highly likely' to happen. Watch the company's website - therudemechanicaltheatre.co.uk – for changes, or speak to Mike Chisnall on 01303-862743 or ring The Rudes on 01323-5012560, or email them at therudes1948@gmail.com.



Lyminge Pre-School



Lyminge Preschool provides quality Early Years education and day care all year round for children aged 2-5 years. The Pre-School is run by a team of qualified, highly experienced and dedicated practitioners.

Lyminge Pre-school has a safe, stimulating and fun environment that provides support and challenge for all of the children's individual needs. We welcome all children from the age of two from all surrounding areas.

To arrange to meet the team, please call 01303 863149 (day) or email lymingepreschool@gmail.com and visit our website www.lymingepreschool.org.uk



Anna Lindley
(RVN, Dip.A.Physio)

I offer physiotherapy assessment and treatment of dogs, cats and small animals

I treat your pet in the comfort of their own home

I use a combination of manual therapy, laser, ultrasound therapy, TENS, Kinesiology tape and exercises

to rehabilitate your pet depending on your pet's needs.

Physiotherapy can help with arthritis and the ageing pet, post operative orthopaedic surgery, neurological, spinal conditions and many more conditions

I am fully insured with over 15 yrs experience working with animals. I am a member of the International Association of Animal Therapists (IAAT).

For more information please visit my website:
annasanimalphysio.co.uk or feel free to contact me on
07944 606453 or anna@annasanimalphysio.co.uk

Etchinghill Baby & Toddler Group

We are a friendly toddler group, which caters for babies and children from 0 to school age. Crafts, messy play, trikes, toys and a singing session are included each week. In dry weather there is also outside access for the children to play. We meet on Wednesdays between 10am-12noon at Etchinghill Village Hall. We charge £2 per family, 1st session is free. Tea/coffee and healthy snacks are provided.

If you have any queries please contact:

Cait Byrne - 07850757571

SNIPPERS & CLIPPERS UNISEX HAIR SALON

APPOINTMENT NOT ALWAYS NEEDED
WEDDINGS & SPECIAL OCCASIONS
SHELLAC NAILS
GENTS WELCOME
FREE WIFI

4 Station Road, Lyminge
Folkestone
Kent, CT18 8HP

01303 647 222

info@snippersandclippers.co.uk

Find us on
Google+

Find us on:
facebook



www.tamsinsteelart.com

Tamsin Steel Art PET PORTRAITS

Beautiful and unique
coloured pencil drawings
to be treasured.
A special gift
for yourself, family
and friends.

Enquiries tamsinsteelart@gmail.com



BADGERS BRIDGE NURSERY

" Bridging the indoor and outdoor learning environment for children in their Early Years"

Badgers Bridge is set in the idyllic countryside of Postling, just outside Lyminge. We are a small and friendly Preschool who blend the Montessori principles with the outdoor learning ethos.

We were awarded Outstanding by Ofsted in 2018 in every area. This is a real achievement and we are really proud of the staff who work tirelessly to provide a stimulating and caring environment for the children of Badgers Bridge.

The inspector was particularly impressed with our Forest School. *"Children enjoy limitless opportunities to explore, investigate and work together in the natural woodland environment. Staff skilfully inspire children to develop a significant understanding of the world in which they live".*

".....exemplary relationships between staff provide excellent role models for children and promote high standards of behaviour. Children make outstanding progress during their time at the nursery".

We are filling up fast and only have 3 spaces available. So please call or email us..

Email : badgersbridge@gmail.co.uk

Website : www.badgersbridge.co.uk

Tel : 01303 862951

Postling Village Hall, The Street, Postling CT21 4EU

Ofsted Registered : 395128

Companies House Reg : OC375571





PIANO LESSONS FOR ADULTS

Have you always wanted to learn to play the piano but have lacked the opportunity, or faith in your own ability? Did you learn as a child and now regret having given it up? I specialise in teaching adults and have developed a method which will enable you to progress quickly and with great enjoyment.

Please contact: Lise Cribbin, Bridge 01227 637709

Rhodes Minnis Cat Sanctuary



REHOMING & BOARDING CATTERY

- Our Sanctuary takes in and rehomes 250 unwanted cats and kittens each year. A variety of cats are always available to suitable homes.
- 5* Boarding Cattery under 2018 regulations
- We are open to visitors every day from 10-1 & 2-4. No appointment necessary.

T: 01303 862 243
E: rminniscats@gmail.com
Facebook: @rhodesminniscats
www.rhodesminnis.co.uk

Seathwaite, Green Lane, Rhodes Minnis, Kent. CT4 6XU
Reg. Charity No. 262245



APX PROJECT
MANAGEMENT

From design to build, we use trusted quality trade professionals along with reliable suppliers to ensure budgets are met, with high standards maintained.

If you're looking to -

- Extend you property
- Carry out an external or internal refurbishment
- Convert an existing building into a new dwelling

Please contact: paul@apxprojectmanagement.co.uk 07487 364155



Snippers and Clippers Barbers - Lyminge

Please call Richard to book an appointment

01303 647 333

07522 494 969

4 Station Road, Lyminge CT18 8HP

Follow us on facebook for offers

Elham Dog Training Club

All round dog training service for you and your dogs, available from before you even bring your puppy home, in the comfort of your home and continuing for the first four weeks of your new bundle of joy coming home! Fully insured and Kennel Club Registered

Classes at Elham Village Hall and 1-2-1 sessions available.

Contact us for more information and to book a space on a course:

Lyn Fagg 01303 862820 or Sue Coulstock 07542 727326

Email: elhamdtc@gmail.com

Editor: pb@pbarnes20.plus.com

Andy Mannering Flooring

SPECIALISING IN AMTICO AND KARNDLEAN
LUXURY VINYL TILES

- Also safety flooring, rubber flooring, etc.
- Commercial and domestic work undertaken
- No job too small
- Free estimates and advice given
- Over 35 years experience
- Fully insured



Telephone: 0797 434 7248 or 01303 863095

Email: info@andymanneringflooring.com

Please visit my website for further information and feedback

www.andymanneringflooring.com



Fed up of dusting and ironing?

We can help you with your cleaning and ironing needs!

We are a reliable, local cleaning and ironing company based in Lyminge.

References available and Fully Insured.

For further information, please call:

07565 768243

Lyminge Baby and Toddler Group

Due to Covid-19 the toddler group is not currently running.

If you have any questions please contact

Sarah on 07984 939220

Park House Sanctuary Boarding Kennels & Cattery

Park House, Stelling Minnis

CT4 6AN

Brick-Built Heated Kennels

Daily Walks ~ Reasonable

Rates Dogs must be fully
inoculated

Heated Cat Chalets

Quiet Area Inspection Invited.

To book or for further

information, call

01303 862622

or email

lord.whisky@btinternet.com

www.lordwhisky.co.uk

matchams
plumbing & heating

Gas & Oil Boiler Service
Repair
Installation

For fast, efficient service
contact us:

01303 277254

service@matchams.co.uk

248 Cheriton Road,
Folkestone CT19 4DN



Tel: 01303 863737

The Lyminge Association

We're here to support and develop our community!!

Contacts:

Chair: Peter Barnes 863737
pb@pbarnes20.plus.com
Vice Chair: Adrian Willcox 862699
adrian.willcox@virgin.net
Treasurer: Janet Fry 863177
janet@rhodesminnis.org.uk

Committee Members: Nancy Benham, Marian Chubb, Richard Chubb, Fran Davis, Dave Hunt-Cooke, Gillian Heywood, Sylvia Norris, Derek Smith, Ray Smith, Penny Stephens

Newsletter: As for Peter Barnes above

ETCHINGHILL VILLAGE HALL HIRE FEES

The next time you are thinking of holding a function why not try Etchinghill Village Hall, which holds the highest Hallmark accreditation level (Hallmark 3), with its excellent facilities, including ample parking space.

The standard hire charge for the main hall and kitchen are:

Weekdays £11.00 per hour
Saturdays £13.00 per hour
Sundays £13.00 per hour

During the winter months (1 November to 31 March) a Winter Supplement of £1.00 per hour is added to the above rates.

Special rates apply for weddings and all day events with discounts on the above rates applying to Etchinghill residents and regular hirers.

The use of a separate Committee Room is also available.

For all bookings or enquiries please contact:

The Duty Manager on 07514 758936

bus times

for buses from Lyminge **The Sidings** to
Folkestone town centre via Etchinghill & Cheriton High Street

MONDAYS TO SATURDAYS except Bank Holidays

There are route 17 buses at 0705 (not Saturdays), 0749, 0909, 0934 (not Saturdays), 1004, 1034, 1104, 1204, 1304, 1404, 1514, 1614, 1619 (schooldays only), 1654 (schooldays only), 1719, 1749, 1834, 1929, 2113 and 2313.

There are also route 18 buses to Sandling Station & Hythe - for times see our website or call the number below.

SUNDAYS & BANK HOLIDAYS

There are route 17 buses at 1032, 1302, 1532 and 1802.

for buses from Lyminge **Wesley Terrace** to
Canterbury city centre via Elham, Barham & Bridge

MONDAYS TO SATURDAYS except Bank Holidays

There are route 17 buses at 0727 (schooldays only), 0732, 0752, 0903, 0938, 1028, 1128, 1235 (1228 on Saturdays), 1335, 1443, 1608 (1613 on Saturdays), 1703, 1803, 2001 and 2201.

There are also route 18 buses to Canterbury via Stelling Minnis and Bosingham - for times see our website or call the number below.

SUNDAYS & BANK HOLIDAYS

There are route 17 buses at 0903, 1133, 1403, and 1633.

These bus times will operate from 28 October 2018.



03456 00 22 99 @StagecoachSE
southeast.enquiries@stagecoachbus.com
stagecoachbus.com

Editor: pb@pbarnes20.plus.com

Lyminge Village Hall

Registered charity 281845

Large, refurbished, flexible hall with great facilities

From Theatre productions to Weddings, Craft Fayres to Children's parties - we've got it all covered!

Capacity: 200 people dancing / audience seating,
100 for table seating, 50 or less for meetings

Well equipped: stage, kitchen, small rooms, ample parking facilities, disabled access

Access to: playground, skate park, large playing field

Situation: Rolling hills behind and the Church to the front.

Find out how we can help you with your next event:

Booking Line: 0749 7625 741

Email: lvh.bookings@outlook.com



Find us on
facebook

Guideline prices



Find us on
facebook

MAIN HALL HIRE ~ Fri, Sat PM £65
SMALL ROOM ~ £20
EXCLUSIVE ALL HALL ~ £320

Rhodes Minnis Village Hall

Charity No.800345

Rhodes Minnis Village Hall is located 2kms (1¼miles) from Lyminge and just off Longage Hill and Whitehorse Lane in Chapel Lane

The hall, which holds Hallmark accreditation, is ideal for children's parties, band practice, quizzes, meetings, wedding receptions, fundraising events and much more. It has a fully equipped kitchen.

Rates

Mon to Fri £18 per session £48 all day

Sat & Sun £23 per session

£33 for evening session and £69 all day

Sessions

AM session 08.30 - 12.30

PM session 13.30 - 17.30

Evening session 18.00 - 23.45

Separate rates for Bank Holidays and New Year and special rates for regular users.

For all bookings and enquiries please contact:

Mick & Dorothy Athow 01303 862616 e-mail: mick@athow.co.uk

TAYNE CENTRE HALL HIRE

Previously known as the Lyminge Methodist Church Hall

Clayson Hall

1 October to 31 May (including heating) £9.50 per hour :

£34.00 per 4 hour session : £66.00 full day

1 June to 30 September

£7 per hour :£25.00 per 4 hour session :£48.00 full day

Rigden Room (Parlour) with heating, if required*

£7 per hour all year (*electric - over heaters).

Burren Room - storage only

Overnight Stays

1 June to 30 September £50; 1 October to 31 May £60

For any enquiries please call **07971 722 401**



Lyminge Library Opening Times

Monday 10am - 2pm
Tuesday 12noon - 5pm
Wednesday 10am - 2pm
Thursday 10am - 5pm
Friday 10am - 2pm
Saturday 9am - 1pm

Tel: 03000413131 lymingelibrary@kent.gov.uk



Dennis Huntley
Chimney Sweep



Wood burners and multifuel stoves installed
Hearths and fireplaces built & installed
Over 40 years' experience

01303 862 343 • 07850 784 365

dennis.huntley@talktalk.net • www.dennishuntley.co.uk



AIR LINK CARS

(You pack up, we pick up)

Airport, Seaport & Long Distance Travel Specialists.
The Family Run Business where service really counts
Estate cars and People Carriers



Fixed price 24hrs a day. No extras.
Written Confirmation of booking.

For the Easy Airport Link, Think AIR LINK!

01303 670370 • 07766 824 474
airlinkcars@yahoo.com

PODIATRY/CHIROPODY - LYLE-ISABELLE ARNOLD

MCPod, B.Sc Pod, ACC

For the diagnosis and treatment of and including the following:

- Diabetic Care
- The permanent surgical removal of ingrowing toenails
- Orthotic correction of biomechanical issues
- Painful joint or soft tissue issues
- Routine treatment of corns, callouses and nails
- Verrucae

Patients seen by appointment only – 01303 863359



Sunhouse Electrical

Your local reliable Electrician
Part P Registered & Elecsa Approved
On Electrical Safety Register & Fully Insured
For a free quotation call James on

01303 766333

www.sunhouse-electrical.com

Gosbee
LANDSCAPES

FENCING | GATES | PAVING | RESIN BONDING
• Over 35 years experience • Jacksons Approved Installer
• Marshalls approved • Check-a-trade registered

Call Martin Gosbee: 07974 835 511 | 01303 863 337

GOSBEECONSTRUCTION@GMAIL.COM
GOSBEE.CO.UK



SHARPENING

Knives, Gardening Shears,
Secateurs, Edge Clippers, Scissors,
Chisels, Plane Blades,
Mower Rotor Blades, Chain Saws

Free collection and delivery locally.
Please call 01303 863743 or 07961019616 or
email: esposito321@btinternet.com
Please ring for prices.



MANOR
VETERINARY CLINIC

We care for them all, great and small

Due to the current situation our Lyminge and Capel branches are temporarily closed. For enquiries, please contact our Folkestone practice

Please call to book an appointment - 01303 273203

www.manorveterinaryclinic.co.uk

Technical Help When You Need It!

Gadget setup Internet help and training
Purchase advice Security concerns (parental advice)
Help with email TV remotes and tuning PC & Mac
For all those little problems you want to sort.

Call Nigel on 01303 647220 or email
nigel@digitaldoctor.me

Experienced and qualified, 20 years in IT. Excellent rates.



SPRINGRISE
CANINE CARE SERVICES

Dog walking, pet and smallholding
sitting, dog day care, dog
accommodation & dog playground
and so much more....!!

Free (no obligation) consultation.
CV & references available.
Fully insured and security
screened.

Mobile: 07582407637 Email: susannahparkin@googlemail.com
Website: caninecare.thespringrise.co.uk



AK Healthcare

Tel: 07904311554 /
07980897382

www.akhealthcare.org.uk

We help patients suffering from a wide variety of conditions including arthritic pain, circulatory problems, frozen shoulder, back pain, sciatica and much more.
Please visit our website or give us a call for more information.

AK Healthcare,
Garden Suite,
4 Station Road, Lyminge

LYMINGE FOOD & WINE
01303 862225



Our new opening times are:
Mon – Sat **7:00-20:00**
Sunday & Bank Holidays
8:00 – 20:00

POST OFFICE



We offer National Lottery, ATM terminal,
Post Office & PayPoint services.

South East Aerial & Satellite Solutions

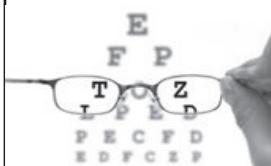
Digital – Freeview – Satellite – Aerials

Supply and fit of quality digital installations, FREEVIEW, SKY, aerials, poor reception and problem solving, upgrades and repairs by fully accredited engineers
Free quotations and advice, fixed prices, fully insured

Freeview

NO CALL-OUT CHARGE
07825 168010 • 01303 862361

freesat



HOME VISITING OPTOMETRIST - providing professional eye care in your home

If you are over 60 years of age and no longer able to get out on your own, then you are eligible for a NHS sight test in your own home. Please call to arrange an appointment:

Elaine Edwards BSc(Hons)MCOptom 01303 840541

Registered with the General Optical Council (01-15421) Member of the College of Optometrists Member of the Association of Optometrists

Financial Planning

David Gridley - Chartered Financial Planner

Range of quality advice from a fully qualified adviser:

- Pre- and Post-Retirement Planning
- Investment Planning
- Inheritance Tax Planning

For further information, please contact our Lyminge office
David Gridley FPFS

Tel: 01303 863959 Email: davidgridley@sjpp.co.uk

MWH

window and gutter cleaning service

Mark Haley

Lyminge and surrounding areas

For a free no obligation quote, please contact me

Mobile: 07738 479202

Home: 01303 863 702 Email: haleymark161@gmail.com

Find us also on Facebook



OIL BOILER SERVICE

Professional Friendly Service. Prompt Response to Breakdown Calls. Over 40 Years Experience.

For Routine servicing, emergency breakdown calls and commissioning, contact:

P & V QUENBY LTD (Est 1987)

01227 760428

www.oilboilerskent.co.uk

T. Metcalfe Fencing Contractors

Approved Expert Installer for Jacksons Fencing

Established over 30 years

Fully insured - Highly experienced teams



Panel fencing, gates, decking, pergolas, post & rail, stock fencing, security, landscaping & tree surgery.

01303 840201 07790 290 155

metcalfefencing@btinternet.com

Proprietor - Derek Burr,
Ash Ridge House, Elham



**Lou Lloyd
Carpenter**

loulloyd@rocketmail.com

07984 426214

Kitchens, Flooring, Wardrobes,
Doors, Decking and more!

Fincham Plumbing & Heating

Over 30 years experience. Gas Safe, CIPHE, WIAPS registered
Lyminge residents

**Rosemary and Martin Fincham
07835 851 706**

For your bathroom installations from start to finish,
tiling, plumbing, gas, heating, radiators, boiler servicing
Free estimates

KSL Maintenance

New Builds and Repair

Timber Sheds, Carport, Garage extension, Shelter,
Decking, Agri / Equestrian or Household Fencing and
Gates. Steel Fabrication and Mig Welding projects

Text/call: 07805 773251

Email: kevin.leppard@gmail.com

Will respond within 24Hrs. Based in Rhodes Minnis.

HAND MADE CURTAINS, ROMAN BLINDS & SOFT FURNISHING

CURTAIN ALTERATIONS

TEL: VALERY WREN 01303 237755



D & S DOUBLE GLAZING SERVICES

01303 863689 - 07912317915

We are a local company that specialise in double glazing repairs offering a wide range of service's that include: Replacement double glazed units - Locks - Hinges - Handles - Rubber Seals - Gaskets.

For a free estimate please call: **07912317915 or 01303 863689**
or email: **doublesglazingservices@gmail.com**



CEDAR TREE CARE

All types of tree work undertaken

Crown lifting, crown reductions,

dismantling and removals, hedge maintenance,

pollarding, stump grinding and removal, mobile saw milling,
wood land maintenance, all year round seasoned logs available

Fully insured and NPTC qualified with over 15 years experience

Call Tom: 07769 908027 email:linchlot5@gmail.com



Sarah de Rougemont

Craftsman/Co-ordinator

UPHOLSTERY

All commissions considered
01227 455841 or 07973 377817



All Aspects of Tree
Work Undertaken
NPTC Qualified
Fully Insured
Please call **Shane** for
a Free Quote
**07963 203564 or
01303 621992**

**Red Boot
Tech Services**



THE COMPUTER LADY
For a fast and reliable service



For **ALL** your business & home **IT** support: 01797 363385 or enquiries@thecomputerpeopleltd.co.uk



T. M. GRIGGS

01303 489795 07854 098395
tobystreesurgery@gmail.com



**Garden Clearance - Turfing - Hedge Cutting
Tree Work - Stump Grinding - Fence Repair**

Filehurst Associates

Tel: 01303 239990 E: info@filehurst.co.uk

Domestic & Business Removals - UK & France
Long or Short Term Storage
Business Document Storage
Call now for a no obligation quote

FRESHLOOK GARDENS

Regular lawn mowing service. Garden design. Hard and soft landscaping. General garden work, fencing and decking. Turfing hedge cutting, small and medium tree work. Water features, ponds and patios.

For free quotation ring **Danny Scott**
01303 242140 or 07795510093
mrdanscott89@gmail.com

Established since 1990. Fully insured.



colebrooksturrock.com
still THE local and regional specialist...
SALES & LETTINGS
Call now for your free market appraisal
01303 840422
elham@colebrooksturrock.com
Incorporating
Browns

Sandwich	Bridge	Minster	St Margarets At Cliffe	Walter	Salwood	Elham	Hawkinge
----------	--------	---------	------------------------	--------	---------	-------	----------

Computer Repairs

01303 241325
07968 129902

PCs, MACs, Laptops, Tablets & printers,
Upgrades & Repairs, Internet & Email, virus removal,
Office Setup, Backup & Recovery & much more ...
Tuition available by a qualified tutor.

Usual Fee **£55**

Web sites built & hosted from £10 per month

See www.computers-in-lymington.co.uk for details



Local Tradesman

J Tappenden

Established 36 years

Painter/Decorator/Builder

01303 862467

077755 78008



Alan Croucher
Caravan Engineer

07921 480919 - 01303 863194

Caravans & Motorhomes "WE COME TO YOU"

www.arcmobilecaravanservices.com

"Your manufacturer's warranty is safe in our hands"



Jackson Plumbing Property Maintenance

Complete bathrooms and tiling
No job too small. Special rates for OAP's.

**Telephone: home/evening 01303 270691
or daytime 07773 089398 or 07864 929826**

A. J. Athow

**BUILDER & DECORATOR
GENERAL MAINTENANCE**

Telephone: 01303 862616

Mobile: 07541 792238

Email: tony@athow.co.uk



Ralph Allard
Chimney Sweep



All chimneys, boilers and stoves swept.

Brush and Vacuum. Certificates issued.

HETAS and NACS registered, fully insured.

Member of National Association of Chimney Sweeps

01303 844465 or 07813716654

Trevor Law Electrical Installations

Serving Elham Valley for 30 years
Part P Registered

01303 862348

07850 970087



J. V. Services Servicing and Repairs: Mobile Mechanic

- Garden Machinery
- Ride on Mowers
- Trailers & Horseboxes
- Quad Bikes
- Classic Cars

(Free collection and delivery)

- Compact Tractors
- Vintage Tractors
- Classic Tractors

Mobile: 078 0300 3047
john@jvserviceskent.com



**JBS
BUILDERS**

Specialising in Driveways, Brickwork, Patios, Fencing, Landscape Gardening. Tree work undertaken (lopping, felling and clearing).

General household repairs, painting, plastering, power jetting & cleaning.

No job too small!!! All work guaranteed and insured.

For free advice and quotations please call: 07825 168010/ 01303862361 (anytime)





DILTON MINI SKIP HIRE

Ballast, Hardcore, Sand
and Topsoil Supplied
REGISTERED WASTE CARRIER
01303 812448 or 07799 433754

FOWLER PLUMBING AND HEATING

Tel 01303 862971 Mob 07973513552

email

fowlerplumbingandheating@gmail.com



Red Dragon I.T. Ltd.



- Windows, Mac & Linux Systems
- PC Health Checks
- Wired & Wireless Networks
- Website Design
- Graphic Design

T: 01303 723456 | E: info@rdit.co.uk | www.rdit.co.uk
The Old Granary, Hanover Mill, Church Rd, Mersham, TN25 6NU



KW CONSTRUCTION
PLASTERING & RENDERING SPECIALIST

ALL GENERAL BUILDING INCLUDING:
ROOFING, BRICKWORK, TILING, PATIOS,
LANDSCAPING, SCREEDING, GROUNDWORK,
DRAINAGE, EXTENSIONS, RENOVATIONS,
REPAIRS & MAINTENANCE.

30 YEARS EXPERIENCE, COMPETITIVE RATES,
A FULLY INSURED, PROMPT & RELIABLE
HIGH QUALITY LOCAL BUILDER

KENNY 07743488361



Laing Bennett
INDEPENDENT ESTATE & LETTING AGENTS

PHILIP A CHAPMAN

With our excellent local knowledge, service
and two local offices we will get you moving

The Estate Office 8 Station Road Lyminge Kent CT18 8HP
T 01303 863393 E lyminge@laingbennett.co.uk

134 High Street Hythe Kent CT21 5LB
T 01303 264846 E hythe@laingbennett.co.uk

www.laingbennett.co.uk



Hawkinge

Veterinary Surgery

Independently owned veterinary surgery for all types of small animals.

Opening hours: Monday to Friday 08:00-19:00 Saturday 08:30-13:00

24hour emergency service

TEL: 01303 764190

Hawkinge Veterinary Surgery, 9b Defiant Close, Hawkinge CT18 7SU

www.hawkingevetsurgery.co.uk

'Helping you enjoy your garden'

CRT Gardening

Knowledge of general gardening, including lawn care, fencing
installations and repairs, hedge trimming and cutting, vegetable
garden work, all tree work undertaken from felling, topping and
clearing to stump grinding by a qualified tree surgeon.

Heavy-duty work is also undertaken.

Free estimates; fully insured. Karl Dodd 07967442518

Email: karl.dodd@live.co.uk

SCRUBBERS - Est. 1988

THE HOME AND COMMERCIAL CLEANERS

One off, regular or moving day 'Blitz'

Oven cleaning - Ironing

Carpet cleaning and more...

For a friendly and reliable service

Free Estimates

Tel: 01303 249288 or 07834 128671



ROBERT KENT Cert. fp
FUNERAL DIRECTOR

Direct
Cremation

£999

Fair Priced
Cremation

£1950

ONE FIXED PRICE INCLUDING
ALL CREMATION FEES



01303 684062

RKFUNERALS.COM



Acrise Electrical Services Limited

Design - Install - Maintain

Tel: 01303 656007 Mob: 07803 421240

Email: info@acrise-electrical.co.uk

Website: acrise-electrical.co.uk

Domestic, commercial, industrial & agricultural
electricians serving the Elham Valley and surroundings.



CEDAR HOME MAINTENANCE
General Builders and Roofing Specialist

Roofing ▲ UPVC windows/doors ▲ Kitchens/bathrooms
Plastering ▲ Electrical installations ▲ Plumbing
Call now for a free, no obligation quotation. All work carried out
by qualified tradesmen. Fully insured - all areas of Kent covered.

Mobile: 07968197613 Office: 01303 230787

cedarhm@hotmail.co.uk & www.cedarhomemaintenance.co.uk



Accounts & Bookkeeping Services

www.aabookkeepingservices.co.uk

Bookkeeping and Financial Accounting
Accounts Preparation for Sole Traders and Partnerships
QuickBooks, Excel, TAS, Sage and VT Final Accounting Software
Self-assessments and VAT returns
Over 10 years' financial experience.

Fixed prices available or hourly rate £20 per hour

Anita Adams BSc (Hons) MAAT AATQB

07891 135766 or 01303 864254 or anitaadams@live.co.uk

Tressenden Designs

A seamstress and costume maker with 8 years of experience.

- ♦ Clothing alterations ♦ Repair work undertaken ♦ Made-to-measure; create a bespoke piece for those special occasions
- ♦ Modern and vintage designs ♦ Costumes, ball gowns and wedding dresses

For more information or a quote please contact Amy on: Mobile: 07853 202304 Email: amy.louise.ford@hotmail.co.uk



D.M.B. Plastering

All aspects undertaken
Interior. Exterior. Plastering. Rendering.
Coving. Ceilings. Wall. Floors
Finest quality assured. CSCS Certified.
30 years experience.

Free estimates. Reliable service. Fully insured.
Call **David** on **07818 607209**



Need to talk?

Confidential and compassionate
qualified counsellor here to listen.
Please call or text Natasha on 07593 794321
All messages replied to
Email: forestlodgetherapy@gmail.com
www.forestlodgetherapy.com

Personal Computing

For straightforward I.T. advice, solutions
and training

Contact: **Steve Ashman**
862869
sra@ashman-consulting.co.uk

B.M. Plumbing & Maintenance Services

Local Lyminge Tradesman

Plumbing and heating works. Complete bathroom
install including tiling. General building maintenance
undertaken. No job too big. No job too small.

Cheaper rates for senior citizens



07890854128 Benmillsplumbing@hotmail.co.uk

Wilco Plumbing & Heating

Central Heating Installations & Repairs
Gas & Oil Boiler repairs & replacements
5 Year Guarantee on Worcester Bosch Boilers.
Local Experienced Engineer, Emergency plumbing 24/7 call out
Registered with the Institute of Plumbing
Gas Safe Registered-OFTEC Registered
01303 862173 07860 452640
paul@wilcoplumbing.co.uk www.wilcoplumbing.co.uk

JON DAUGHTERS - Local Builder

All aspects of general building works undertaken including:
roofing, kitchens, bathrooms and small extensions

Trading for over 30 years
Free quotes, no obligations, fully insured
Telephone: 01303 863371
Email: daughters777@hotmail.co.uk

House Clearance covering South East Kent.....and beyond!

CAROL CREES CLEARANCES



- Est. over 30 years
Full/part house clearance
Fair prices paid
Antique/Vintage/Retro/Modern
Registered rubbish carrier

Contact **Simon Cullen** on **07745 421680** or **sijnzo@aol.com**



www.eastkentfootcare.co.uk

07745 532075

**Podiatry, Chiropody,
Foot Health**

Treating and managing foot
and nail conditions, corns,
callus, insoles, ingrown nails,
diabetic foot care



Total garden care for all your needs

TIM MILLETT

Grass Maintenance, General Gardening, Small & Medium
Size Tree Work, Stump Grinding and Wood chipping
Fencing Repairs & New Installations
Turfing, Hard & Soft Landscaping

Free Estimates - Fully Insured

01303 863676 07752 880583

Email: **info@tmhorticulture.co.uk**

THE BIG LITTLE BATHROOM COMPANY



COMPLETE BATHROOM SUITES • BESPOKE CAST IRON RADIATORS
TAPS • SHOWERS • TILES • ACCESSORIES • TEA & COFFEE

CANTERBURY ROAD, ETCHINGHILL, KENT CT18 8BS

sales@theblbc.co.uk • 01303 864349 • www.theblbc.co.uk

N.P.C.

Domestic Appliance Services

Service and repair of washing machines, tumble driers,
dishwashers, cleaners and small electrical work.
For a prompt and friendly service

Call Neil Collard 01303 892234 or 07798716044
or Google me on Yell.com

Auto Economy Centre

Fully equipped Mechanical Repair & Service Centre

With the latest diagnostic equipment

Half price MOTs when booked with any service

01303 863656

Orchard Garage, Canterbury Rd, Etchinghill

www.autoeconomycentre.com

Old English Pine

Antique, reproduction oak and French-style painted furniture with beautiful and reasonable priced accessories to make
your house a home. Bespoke pine units made to order. Huge shop - over 3 floors open 7 days a week.

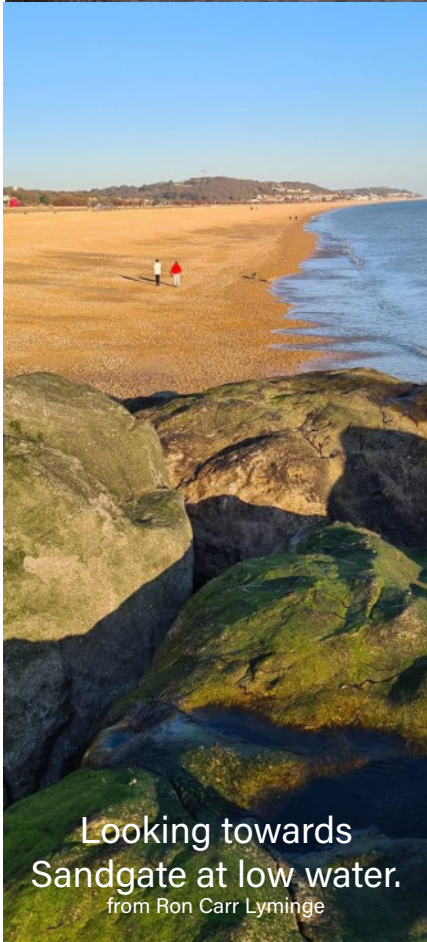
Tel: **01303 248560** **www.oldenglishpineinkent.co.uk** **100 Sandgate High Street, Sandgate**

Out & About..

Do you have any photos of local events or groups in action? If so can you please forward them along with a few words to pb@pbarnes20.plus.com



Early morning sky in Rhodes Minnis
from Anthony Trinkwon



Looking towards
Sandgate at low water.
from Ron Carr Lyminge



A local Snow Woman



Sledding on The Bumpy Field

Valentine's Cream Tea

Vanessa (and John Carr) are about to savour the delights of the their Valentine's Day cream tea supplied by The Coach & Horses. The pub supplied over 34 cream teas to couples and covered the area from River to West Hythe!! They also supplied cream teas to the staff at Elham and Lyminge primary schools as a 'thank you' to all the staff.

They are planning to do cream teas for Mother's Day (14 March) and these can be booked in advance via Facebook, Messenger or phone 01303 901011



Out & About..

Do you have any photos of local events or groups in action? If so can you please forward them along with a few words to pb@pbarnes20.plus.com



All of us at Lyminge Primary School would like to say a huge 'Thank you' to everyone who has supported us during this lockdown. This is an amazing community to be part of!

Wayside Watch

If you have any photos of favourite wild flowers, or any interesting wildlife, please send them to adrian.willcox@virgin.net together with a few words about them. Mystery ones also very welcome!!



Broom

Firstly - an error ! Well spotted by two of our keen readers. The yellow flowered bush shown last month was incorrectly called Broom, whereas it is in fact Winter Flowering Jasmine [*Jasminum nudiflorum*]. I knew we had a broom bush in the garden and wanted to include the bit about the Plantagenet dynasty and took a photo of the wrong bush - our broom bush is not trying to flower just yet, but when it does we will see the pea-like flowers on somewhat similar stems, but the leaves are different !



Winter Flowering Jasmine

Mystery Picture !



Alder



Ash



Suggestions for the mystery purple flower included escaped Lobelia and Ivy-Leaved Toadflax [suggested by Frances Blanchet]. The seeds pictured last month were correctly identified as Alder cones and Ash keys by Chris and Sarah Glass. Maureen Cox also identified the Alder cones. This month we have two wildlife pictures, including an unusual daytime avian visitor to one of our readers' garden!

Any answers to: adrian.willcox@virgin.net