

THE LYMINGE NEWSLETTER

For the communities of LYMINGE, ETCHINGHILL, RHODES MINNIS and POSTLING

November 2021

Produced by
THE LYMINGE ASSOCIATION
www.lyminge.org.uk

From The Lyminge Association

CHRISTMAS IN LYMINGE

As in previous years, the Lyminge Association is gearing up to support Christmas in Lyminge.

If you live on Canterbury and Station Roads and you wish to have a free bracket and Christmas tree on your property, then please contact Adrian on 862699 asap.

The main Christmas tree will again be outside Laing Bennett. However, because of our concerns relating to the safety of the children (and adults), **the switching on ceremony by Santa will occur outside the Library on Thursday 25th November.**

Adults and children (with torches) are encouraged to arrive at 4.40pm (no earlier please) to sing some carols prior to the switch on of the lights at 5pm. We hope to provide the customary mince pies, mulled wine, soft drinks.

Delivery of Christmas presents is also being planned with Santa and details will be in the December edition of the Lyminge Newsletter.

Key details: Christmas light switch on starts 4.40pm Thursday 25th November outside the Library.



**THE PHOENIX
THEATRE COMPANY**

INVITES YOU TO



THE CAPTAIN'S TABLE

aboard



M.V. "Pride of Lyminge"



for

**An Evening Cruise of Entertainment,
songs and sketches**

at Lyminge Village Hall

Saturday 20th November 2021

7.30pm doors open 7.15

FOR ONE NIGHT ONLY

Reserved seats at tables ~ Bring your own drinks, supper, plates
and cutlery for the interval ~ Tea and coffee available

Tickets £7 available from Laing Bennett

STREAM CLEAN - Well Field, Saturday 13 November at 10am. All welcome - please bring tools and protective clothing.

NEW OFFICERS - Following the recent AGM, the Lyminge Association has new officers. Details can be found on Page 21. We're currently looking for two new members to join this community-driven group. This is a chance to support your neighbourhood and have fun.

Margaret Saunders' Meanderings

The day dawns hot and sunny amongst a run of similar such days in September and I am staying with friends in West Yorkshire. On this particular day we decide to go to Anglers Country Park near Wakefield. It has a central lake which is surrounded by grassland, woodland and a wetland area known as the 'Pol'. It was once one of the deepest open cast coal mines in the country, reaching a depth of 250 feet and after the mine closed, Wakefield Council took over the area and developed it into a nature reserve.

The two mile long footpath circumnavigates the lake and is dusty after a prolonged period of dry weather. Trees border the beginning of the walk and their drying leaves rustle in the breeze. As I round the corner, the large lake looms into view with the clear blue sky reflected in its water and although there is a notice warning of the danger of green algae, which is harmful if ingested, none of this is evident to the eye. The scene is restful and peaceful with the path, swinging away from the lakeside, bordered by a deep band of woodland comprising silver birch, beech, oak, poplar, willow, ash and aspen.

I deviate from the path so that I can walk closer to the lake shore. Ducks, swimming then upending themselves, remind me once again of Kenneth Grahame who wrote:

***"All along the backwater,
Through the rushes tall,
Ducks are a-dabbling,
Up tails all!"***

Canada geese, moorhens and swans are all close by, the smaller ones swimming in and out of the reeds that are growing at the water's edge and the swans creating wide 'v' shaped wakes. Bulrushes and marsh grass add to the variety. Little beaches of fine silvery sand have formed, with large boulders arranged against the low banks.



Before I even reach them, I know there are going to be ripe blackberries in the brambles ahead as I can smell them on the warm air. Just the other side of these is a group of about twenty boys, sitting in the sun with their bicycles lying around them at various angles. A football has gone into the lake, whether by accident or on purpose I do not know, but one of the boys decides to wade in then swim to retrieve it. Others then join him, sending out ripples in ever widening circles. I remember the sign I had seen as I entered the park about the algae and hope the swimmers do not become ill.

I continue walking, rounding the far end of the lake. Sun-sparkles are dancing in the ripples caused by the breeze and a lone crow sits on the shore, silhouetted against this brightness. I take the path again and pass a row of mushrooms carved out of wood. Turning sharply, the path moves inland to allow the area that is nearest the shoreline to be fenced off, thus encouraging wildlife to thrive without human disturbance. Trees and bushes crowd together against either side of the track, providing some welcome shade from the late Summer sun. Rosehips, plump and vibrant red, shine in their ripeness prompting thoughts of rosehip syrup. Birds twitter in the trees. I pass visitors taking a rest on a bench and we exchange greetings and comments on the intensity of the day's heat.



I am on the home stretch now and begin to turn around the bottom end of the lake, where once again I walk near the water. Large boulders have been placed in a rough circle to make a small lagoon and here swim coots, mallards and Canada geese, whilst others preen and sun themselves on the rocks. Standing still I watch and enjoy their relaxed ablutions.

The Woodland Café calls and perversely, considering the continuing warmth of the afternoon, I order a hot chocolate and I am assured by the person who serves me, that he too likes to drink hot chocolate on a hot day! Sitting on a bench under a parasol I look into the nearby shrubbery. A shy little bird comes out onto the concrete and I realize it is a goldcrest, the UK's smallest bird. Sitting very still, I watch as it and its mate peck around on the ground then flit about in the bushes, appearing now and then, but I also follow their hidden movements as evidenced by the twitching of leaves.

Although today feels like a continuation of Summer - we have now passed the meteorological beginning of Autumn and are approaching the season's traditional beginning - nature is showing that it is preparing to move into this mellow and fruitful time of year.

Diary of Forthcoming Events

This page is printed to give readers and organisers the opportunity of planning events without clashing with existing ones, which are already in the 'diary'. It is not intended as a means of advertising and we take no responsibility for errors or omissions. Acceptance is at the discretion of the editor. Please send your updates by email to pb@pbarnes20.plus.com or via methods outlined on Page 4. **Location and name codes below:**

One-Off Events

Date	Time	Event	Where	Tel. No.	Date	Time	Event	Where	Tel. No.
06-Nov	9am	Tayne Centre Market	TC	07977899559	04-Dec	9am	Tayne Centre Market	TC	07977899559
10-13 Nov		<i>Blackadder Goes Forth'</i>	See P8		04-Dec	7.30pm	Haywardians Concert	LMC	
13-Nov	10am	Stream Clean	WF		04-Dec	10am	Christmas Tree Festival	LPC	863911
20-Nov	7.30pm	The Captain's Table	LVH	See P1	05-Dec	1pm	Christmas Tree Festival	LPC	863911
25-Nov	4.40pm	Christmas Light Switch On	LL	863737	05-Dec	7pm	Etchinghill Residents Assoc. AGM	EVH	
27-Nov	10am	RM Cat Sanctuary Christmas Fair	See P12		09-Dec	7.30pm	Cantores Christmas Concert with a Difference	LVH	07840796383
28-Nov	5pm	Christmas Tree Lighting-Up	Meriden Walk		10-Dec	7pm	Christmas Concert	LPC	See P7
28-Nov	5pm	Advent Songs of Praise	LPC	862747	20-Dec		Christmas Present Delivery		07840796383
All December		Mount Pleasant Lights On							

Weekly Events

Day	Time	Event	Where	Tel. No.	Day	Time	Event	Where	Tel. No.
Mon	9.30am	Dementia & Me Unit	JC	269602	Wed	1.30pm	Dementia Café	JC	269602
Mon	10am	Open House Coffee House	EVH	863394	Wed	2pm	Bingo (Start date TBC)	EVH	
Mon	10am	Bridge Club	LBC	863177	Wed ⁵	3pm	French Conversation	Call	862972
Mon	10.30am	Carers Coffee Morning	JC	269602	Wed	7pm	Tayne Centre Circuits	TC	07925982995
Mon	10.30am	Lyminge Larks (Singing)	LMC	07951572920	Wed	7.15pm	Cantores Dominicae Choir	LVH	07840796383
Mon	11am	Pilates	TC	07825109670	Thurs	9.30am	Dementia & Me Unit	JC	269602
Mon	12.30pm	Lunch Club	JC	269602	Thurs	10am	Art Group - Morning	TC	211364
Mon	2.30pm	Knit and Natter	TC	863049	Thurs	10am	Lyminge Art Group	EVH	
Mon	6.30pm	Ballroom/Latin/Salsa Dancing	TC	07966751991	Thurs	10.15am	Baby Rhyme Time	LL	03000413131
Mon	6.30pm	Judo Club	LVH	862946	Thurs	1.30pm	Cream Tea	JC	269602
Mon	5.30pm	Pilates	EVH	07951608008	Thurs	2pm	Art Group - afternoon	TC	07870494644
Mon	7pm	Pilates	EVH	07951608008	Thurs	3.30pm	Pilates	EVH	
Mon	7.30pm	Yoga	RMVH	07977503897	Thurs	5pm	Pilates	TC	07951608008
Tues	9.30am	Dementia & Me Unit	JC	269602	Thurs	6pm	Pilates	EVH	
Tues	9.30am	Dance Fitness Class	EVH		Thurs	6.15pm	Pilates	TC	07951608008
Tues	9.45am	Young at Heart Dance/Fitness	EVH	07565182259	Thurs	6.45pm	Short Mat Bowls	LVH	863842
Tues	12noon	Pilates	EVH		Thurs	7pm	Pilates	EVH	07951698008
Tues	2pm	Pickleball	EVH	863819	Thurs	7.30pm	Ballroom and Salsa Dancing	EVH	07967979610
Tues	6.45pm	Short Mat Bowls	LVH	863842	Fri	8am	Chiropody (appointment only)	JC	269602
Wed	9.30am	Dementia & Me Unit	JC	269602	Fri	9.30am	Dementia & Me Unit	JC	269602
Wed	9.30am	Age UK Info & Advice – drop in	JC	269602	Fri	9.30am	Art Class		
Wed	10am	Baby/Toddler Group	EVH		Fri	10am	Feel a Fairy Tale Sensory	EVH	07800737936
Wed	10.30am	Cognitive Stimulation Therapy	JC	269602	Fri	10.15am	Talk Time	LL	03000413131
Wed	10.30am	Carers' Dementia Café	JC	269602	Fri	12noon	Cognitive Stimulation Therapy	JC	269602
Wed	10.45am	Singing for Health	JC	862364	Fri	7pm	Table Tennis	EVH	
Wed	11.45am	Pilates	TC	07825109670					

Monthly Events

When	Time	Event	Where	Tel. No.	When	Time	Event	Where	Tel. No.
1st Mon	2pm	RBL, Elham Valley	St Mary's	862508	2nd Wed	10.30am	Mothers Union	NC	862221
3rd Mon	7pm	Etchinghill Cinema Club	EVH	07544670363	3rd Wed	10am	Family History	LL	03000413131
Last Mon		Parish Council Meeting	SNL	07715221705	4th Wed	2.30pm	RM Circle	RVH	862913
1st Tues	2pm	Lyminge Reading Group	LL	03000413131	Last Wed	7.30pm	Quiz Night	C&H	862694
1st Tues ³	7.30pm	LHS Talk/Event	TC	863879	4th Fri	7.30pm	Beetle Drive	RVH	862616
2nd Tues	2pm	(Railway Readers)	LL	03000413131	Last Fri	1.30pm	Team Quiz	JC	269602
3rd Tues ²	7.30pm	Gardeners' Society	TC	07703149008	1st Sat	9am	Saturday Market	TC	07977899559
Last Tues	2.15pm	Poetry Group	LL	03000413131	2nd Sat	10am	Postling Ch. Coffee Morning	PC	863536
1st Wed	10.30am	Lyminge Friends	LMC	862598	2nd Sat	10am	Ethelburga Quilters	EVH	

¹ In term time only ² Except Jan and Feb ³ Except Jan, Feb, and trip in Aug ⁴ Except Aug and Dec ⁵ Not held in August

C&H: Coach & Horses; **EVH:** Etchinghill Village Hall; **ELVH:** Elham Village Hall; **ERA:** Etchinghill Residents' Association; **ES:** Elham Square; **EVL:** Elham Valley Line Trust; **JC:** Jubilee Centre; **JF:** Jubilee Field; **KH:** Korf House; **LB:** Laing Bennett; **LBC:** Bowls Club; **LL:** Library; **LMC:** Lyminge Methodist Church; **LPC:** Lyminge Parish Church; **LPS:** Lyminge Primary School; **LVH:** Lyminge Village Hall; **LW:** Lord Whisky; **NP:** Nailbourne Court; **PC:** Postling Church; **PH:** Lord Whisky, Park House; **PVH:** Postling Village Hall; **RVH:** Rhodes Minnis Village Hall; **RMC:** Rhodes Minnis Church; **RMCS:** Rhodes Minnis Cat Sanctuary; **RR:** Rigden Room; **SMVH:** Stelling Minnis Village Hall, **SNL:** See Newsletter for info; **SP:** Sibton Park; **SPCC:** Sibton Park Cricket Club; **TC:** Tayne Centre; **TF:** Tayne Field; **WF:** Well Field



St Mary and St Ethelburga Parish Church, Lyminge

Sunday 7th November

Lyminge - 10.00am WOW Service
Paddlesworth - 6.00pm Evensong

Sunday 14th November

Lyminge - 10.45am Act of Remembrance
at War Memorial - On completion
Remembrance Service to be held
at Methodist Church

Sunday 21st November

Lyminge - 10.00am Holy Communion - CW1
Paddlesworth - 6.00pm Evensong

Sunday 28th November - Advent Sunday

Canterbury - 11.00am Elham Benefice Advent
Cathedral Eucharist
Lyminge - 5pm Advent Songs of Praise

Notice: At Lyminge the main Sunday Morning service will
be at 10.00am, NOT 11.00am from this month onwards.

To contact the churches, please phone:

Reverend Jane Weeks 01303 840219

or email revweeks@hotmail.com

www.elhamvalleygroupofchurches.co.uk or

www.achurchnearyou.com

Postling Church Services

7th November 9.30am Holy Communion in Church
14th November No service in Postling
21st November 9.30am Morning Service by Zoom
28th November No service in Postling

Lyminge Methodist Church

The following services will be held at 11am and we look forward
to welcoming you.

7th November - Mr Richard Blackwell
14th November - 10.45am at War Memorial
followed by service in Methodist
Church led by the Rev. Gill Songer
21st November - Mr Colin Pearson (Valley Service)
28th November - Rev. Gill Songer

Rhodes Minnis Chapel

A warm welcome is extended to anyone who wishes to join us for
the following services held at 9.30am. Some Covid restrictions
may still be in place which will be strictly adhered to.

7th November - No service
14th November - Rev. Gordon Newton (incl. Holy Communion)
21st November - No service at Rhodes Minnis but we
will be joining in a Valley Service at
Lyminge at 11am
28th November - Service will be led by the local
congregation

Christians in Lyminge



Sunday 14th November: A service of Remembrance
will be held at the War Memorial starting at 10.45am
followed by a service at the Methodist Church.

28th November: Advent Songs of Praise by candlelight,
5pm at the Parish Church

4th December: Haywardians concert at 7.30pm in the
Tayne Centre.

4/5th December: Christmas Tree Festival at the Parish
Church.

10th December: Music on a Friday at the Parish Church.

Lyminge Newsletter

Terms & Conditions: Copy deadline for next edition - 18 November 2021

Please email your copy to the editor (pb@pbarnes20.plus.com). Your payment must be received before
your article or advert can appear in the Newsletter. Please leave your payment along with your name,
organisation, telephone number and copy of your ad in a sealed envelope at the Lyminge Library.

Business adverts cost from £9.50 per month or £95.00 per year. **Personal and charity adverts and
articles** from £3 per month, or £30.00 per year. The annual rate offers 12 entries for the price of 10. Please
make cheques payable to '**The Lyminge Association**'. If you do not have email, a typed paper-copy may
be left with the payment at the Library. Printed by Canterbury Print & Mail.

Lyminge Association accepts no liability for the accuracy of the advertisements or subsequent actions
arising in conjunction with advertisers in the newsletter.

Further details from Peter Barnes (editor) on 01303 863737 or pb@pbarnes20.plus.com

District Councillors' Update - November 2021

The Queen's Green Canopy - To mark the 70th anniversary of the Queen's Accession, a tree planting campaign is planned across the UK. The District Council will be involved in this Platinum Jubilee celebration which will both thank Her Majesty for her exceptional service and promote the importance of trees in the environment. We are working on a number of ways to plant sustainably through which the council and residents can create a legacy in honour of Her Majesty and benefit future generations. If you would like to purchase your own tree to mark the occasion then there is information here www.queensgreencanopy.org. Trees can be purchased from www.woodlandtrust.org.uk. Planting will take place during the tree planting season between October 2021 and March 2022 and begin again in October 2022 through to the end of the Jubilee year.



Waste Collection - the collection of waste and garden waste is now reported as back to normal, however, please do let us know if you have problems. To compensate subscribers for the missed garden waste collections in 2021 there will be a reduction in the subscription for 2022. This will be done automatically and does not have to be applied for. (We will be seeking to reclaim this cost from our contractor Veolia but the reduction will be paid whatever the outcome of this claim.)

Core Strategy Review - A reminder that the consultation to this important local planning policy closes on 15 November. See folkestone-hythe.gov.uk/Core-strategy-review-2020. Comments can be made through the link on this website, by email to planning.policy@folkestone-hythe.gov.uk or post to the Civic Centre. At this stage only the changes can be commented on and no new issues can be raised.

Awards - We're pleased to report that for the 8th year in a row your district council has been awarded the prestigious Customer Service Excellence Award from the Centre for Assessment with an improved score. We've also won Green Flag status from the environmental charity Keep Britain Tidy for three of the public spaces we run - the Lower Leas Coastal Park in Folkestone (which has also won a 2021 Travellers' Choice award from Tripadvisor), the Royal Military Canal in Hythe and Kingsnorth Gardens in Folkestone. All well worth a visit.

Jenny attended the 'Sing Something Special' Service and Harvest Celebration meal at Postling on 26 September.

We'd like to add our appreciation of James White of Etchinghill who died recently and who received a fine tribute in the last edition of this newsletter. Susan was able to attend his funeral on 30 September at a packed church in Postling. James was a dear friend and was much loved. We are also sad to lose Les Preston in Etchinghill who was also a valued member of our community. We send our condolences to their families and friends.

Cllr Jenny Hollingsbee (Jenny.hollingsbee@folkestone-hythe.gov.uk 07887918458) & **Susan Carey** (susan.carey@folkestone-hythe.gov.uk 01303 670561) - your district councillors for North Downs West, Folkestone and Hythe District Council

Rhodes Minnis Circle

We enjoyed Alan Haines "Baby Boomer Nostalgic Show" which caused much laughter when he entertained us with anecdotes of the years between 1946 and the '70s

On the 24th November Owen Standen is giving us a talk on Climate Change affecting the U.K.

Visitors will be most welcome to come and hear about this topical subject.

The competition will be an item beginning with the letter "N"

For further details please contact Marion 862913



We have space available for Lengths/Improvers for Expanded Learn to Swim Scheme (Swim England LTS Level 4+)

Due to the expansion of our successful (nationally accredited) Swimschool at Hythe Aqua we currently have immediate vacancies for lengths and intermediate level swimmers

Club Secretary: 01303 862353

family.parris13@btinternet.com www.hytheaqua.org.uk

ETCHINGHILL RESIDENTS' ASSOCIATION
Film Night
'The Father'¹²
Monday 15th November 2021
Etchinghill Village Hall - 7 for 7.30pm
Entrance Fee £5 pp
Open to new and existing members
Free Refreshments and Raffle

www.etchinghill.info



Every week we're getting closer to target, and yet again we've been blown away by the generosity of our community here in Lyminge.

Following our fantastic fun-day in September - what a great day that was - we were approached by Dennis Huntley who offered to make a donation of £271.05, in order to take the total raised at the event to £1000. Thank you so much Dennis for your incredible support!

We'd also like to say a BIG thank you to Lyminge Dramatic Society, which has sadly disbanded, but kindly chose to donate its remaining funds to our cause, to the sum of £4098.99. Thank you so much for this amazing donation.

And finally, a big thank you to the preschool parents who donated via our campaign envelopes at the end of the summer term. Together you raised a wonderful £70 - thank you for your generosity and sorry it took us so long to process your donations!

We hope to have news of some Christmas-themed fundraising in the next newsletter, so keep an eye out for that!

All the best

LYA

PILATES

MONDAY 18:15 - Stelling Minnis Village Hall

WEDNESDAY 10:30 - Rhodes Minnis Village Hall

THURSDAY 15:30 - Etchinghill Village Hall



For more information:

lucianaclarke.pilates@gmail.com

07944028445

For online classes:

www.lucianaclarkepilates.com/book-online

BALLROOM & LATIN DANCING

Cha Cha Cha ~Waltz ~ Jive ~ Quickstep ~ Rumba ~
Foxtrot and more



Etchinghill Village Hall

**New Beginner
Classes**

Commencing

11 November 2021

**Thursdays 7.30 -
8.30pm**

Improver Class

**Thursdays 8.30 -
9.30pm**

£6 per person per hour

Bring your two left feet and your sense of humour

Get FIT, get HEALTHY & get DANCING

Partners not necessary

To join any of the classes, or for further details, or
information about private lessons

contact **Lynn** on **07967979610**

lynn.chapman0127@btinternet.com

IDTA (AB), (AL), (SalDip)



CHRISTMAS LUNCH

(Members Only)

**Tuesday
14th December 2021
at
The Coach and Horses,
Lyminge**



Call Vi on 01303 863920 or email:

vi.mcintee@btinternet.com to book your place or for more
information.

Sorry, no events in November

However, Elham Gardening Society is pleased to present their November
speaker who is the well-known TV presenter, author, journalist, and lecturer Gay
Search. She will present a talk entitled 'Great Plants for Small Gardens' starting
at 7.30pm on 19th November at the Elham Village Hall. Non-members are most
welcome to attend with an entry fee of £3.

For general information about the Lyminge Gardeners' Society:

Email lymingegardeners@gmail.com
or call Anne on 07703 149008

TAYNE CENTRE MARKET

**Saturday 6th November
&
Saturday 4th December
9am – 12noon**

**Refreshments available.
For further information or to discuss
booking a table please contact
Debbie 07977 899559
(No market in January)**

MUSIC ON A FRIDAY

CHRISTMAS CONCERT

Lyminge Parish Church

Friday 10th December

7pm

**Do come and listen to your favourite Christmas
songs and enjoy mulled wine and mince pies.**

ALL FREE

**DO COME ALONG IF YOU ARE ABLE FOR AN
EVENING OF FESTIVE MUSIC**

Christmas Tree Festival

Saturday 4th December 10 am to 4pm

Sunday 5th December 1 pm to 4pm

Lyminge Parish Church



Local shops, clubs
and societies will
be supplying and
decorating a tree.

Visitors will vote for
their favourite tree.

Refreshments/mulled
wine/mince pies will
be available.

More details will be
found on posters
around the village.

Contact:

Mike Chinneck 863911

Les Preston – Obituary

Les lived in Etchinghill for over 30 years and played a prominent part in the life of the village working on the Parish Plan, village committee, volunteering for Speed watch and regularly attending 'Open House' on Mondays.

Les was born in Ilkeston in Derbyshire, the youngest of four brothers and with a younger sister. He was the shortest and stockiest of the family but reckoned to be the family's dynamo.

Les served in the Army for 34 years, starting in 1957 when he joined the Infantry Junior Leaders' Battalion at Plymouth. His long and distinguished service saw him achieve the rank of Major when he retired in 1989. His career involved three spells in Northern Ireland as well as postings to Berlin, Canada, Cyprus and Libya, and being based in Colchester, Derby, Berlin, Nottingham and Shorncliffe.



As well as supporting his local community Les was a keen gardener and rambler as well as having an effervescent enthusiasm for experiencing what life had to offer whether it be the cinema, theatre, music events or even walking Alpacas!

Les and his wife, Wendy – who he met in Folkestone and who died last year – were married for 53 years. They had a daughter, Sarah, and a son Adrian.



Fifth Trust Update www.fifthtrust.co.uk

We will be holding our Christmas Fair on Saturday 4th December from 11am to 3pm. We will be taking safety precautions including mask wearing to ensure everyone is safe. There will be lots of lovely things to buy - ceramic tree decorations and ornaments, woodwork, handicrafts, delicious chutneys and jams, as well as Christmas cards, wrapping paper, gift bags and labels, etc. We love inviting visitors, old and new, to the Vineyard. Here they can choose their Christmas tree, enjoy a sausage roll or mince pie and a warming drink while stocking up on our sparkling and still wine to toast the holiday season. A tour of our classrooms is another option, to see and talk about the wonderful work our students have been producing throughout the year.

The Vineyard Café is taking bookings for our popular Christmas lunches, available weekdays from 1st – 17th December. Choose from two courses for £20 or three courses for £25. There's delicious vegetarian and vegan options. Booking is essential on cafe@fifthtrust.co.uk. Please note that the maximum group booking size is 14 people.



All are welcome at this informal candlelit celebration as we enter Advent. Come along to sing some favourite tunes and enjoy chatting over mince pies and mulled wine!!

**Sunday, 28 November 2021 at 5pm
St Mary and St Ethelburga Church,
Lyminge**

Contact Rev Deb Scoble for further information - 01303 862747 or revdeboscoble@gmail.com

"Optimism is a happiness magnet. If you stay positive good things and good people will be drawn to you."

**Mary Lou Retton
Gymnast**



A Quick Guide to eConsult to enable you gain medical help

eConsult is useful for patients who need medical advice on a non-urgent medical matter. **eConsult** can be accessed via a link on the homepage of the Surgery website. It takes a few minutes to complete, and the patient will then be contacted by a Doctor or Nurse, as appropriate, within a short time.

During these very busy times, patient demand needs to be managed appropriately so that urgent cases can be seen by a Doctor in a face-to-face appointment.

The Surgery, Lyminge:
www.thesurgerylyminge.nhs.uk/index.aspx

Those people without computers or smartphones will need to continue to phone the receptionist at the surgery. When the surgery is closed, patients can call 111.

Folkestone - Hythe, Operatic and Dramatic Society presents

The Tower Theatre,
North Road,
Shorncliffe, Folkestone
CT20 3HL



BLACKADDER GOES FORTH

**10-13
November**

BOX OFFICE 01303 223925 or towertheatrefolkestone.co.uk



**YOUR
THEATRE
AND
FHODS
NEED
YOU**



**We need volunteers,
can you help?
Please contact Michelle on
office@towertheatrefolkestone.co.uk
for more information**



Etchinghill Update - November 2021

ETCHINGHILL RESIDENTS' ASSOCIATION (ERA)

Chairman: David McCombe, 07939 076617, email dmccombe1@gmail.com

Website: www.etchinghill.info, Facebook: Etchinghill Residents

FILM NIGHT: MONDAY 15 November - ETCHINGHILL VILLAGE HALL. We will be screening the highly acclaimed film, 'The Father' (12), a psychological drama starring Anthony Hopkins, Olivia Coleman and Mark Gatiss. Anthony, an ailing, octogenarian London man refuses all assistance from his daughter as he ages. As he tries to make sense of his changing circumstances, he begins to doubt his loved ones, his own mind and even the fabric of his reality. Entry fee is only £5 pp (please have the exact money ready to reduce handling by our volunteers) and includes a glass of wine, tea or coffee and a free raffle. Prior reservation is not required and new members are welcome.

NB. To help combat the spread of coronavirus, hand sanitisers are available for use within the hall and we ensure adequate ventilation throughout - please wear warm clothing as doors and windows will remain open during the screening. We recommend that face coverings are worn during the performance and when moving around in close proximity to others. Thank you for your cooperation and understanding.

CHRISTMAS TREE LIGHTING-UP & CAROL SINGING - SUNDAY 28 NOVEMBER AT 5PM.

Please meet by the Christmas tree at Meriden Walk for this popular annual event. Complimentary festive fare will be provided and we will be entertained by the Shepway Brass Academy. The lights will be switched on at around 5.30 pm by councillor Susan Carey. Donations for the band and the ERA to help cover costs, will be greatly appreciated.

NB. This event is subject to licence application approval by the council and may be cancelled without notice in the event of inclement weather

ERA ANNUAL AGM - ETCHINGHILL VILLAGE HALL - SUNDAY 5 DECEMBER - 7PM FOR A

7.15PM START. Local residents are invited to this public meeting to discuss matters affecting the hamlet and to vote in a new committee for 2022. Please spend an hour or so to air your views and to help us formulate plans for the coming year. Refreshments will be provided.

NEW CLASSES Do take a look at new classes happening at the Village Hall in the weekly/monthly schedules. From Art, Baby/Toddler Group, Bingo and Quilters to Dance, Pilates, Pickleball and Table Tennis. Phone the Duty Manager on 07514 863518 for more information and to check availability.

News Coordinator: Jacqui Blandford: 07543 966830/ jacqui.blandford@gmail.com



LYMINGE SHORT MAT BOWLS
New Members Wanted
Join us for a warm welcome and fun
at Lyminge Village Hall 7 to 9pm
On Tuesday and Thursday evenings
or even both!

"Positive anything is better than negative nothing."

Elbert Hubbard, Writer

In aid of LORD WHISKY SANCTUARY FUND (Charity No 283483)

Park House Animal Sanctuary

Stelling Minnis CT4 6AN

Tel: 01303 862622

www.lordwhisky.co.uk

E: lord.whisky@btinternet.com



Quiz Night - Saturday 18th December

From 6.30pm at The Lord Whisky Tea Room, Rhodes Minnis

£10pp to include a Ploughman's Supper

Prize for the winning team - Raffle

Teams of up to six. Ring 01303 862622 / 862349 to book

The Lord Whisky Tea Rooms

Gate Lane, Rhodes Minnis CT4 6XY

01303 862349

Open daily from 10am to 4pm

Delicious breakfasts, lunches, cakes, Cream Teas etc.

Sunday Roasts (booking advisable)

Bookings are now being taken for Christmas Lunches

Served daily from 1st - 24th December

3 courses £25pp - 2 courses £19pp

A £10pp non-refundable deposit is required when booking
For more information or for reservations, ring 01303 862349

Continental Cruise-Breaks – Local Departures in 2022



Pick-ups in Elham, Lyminge, Etchinghill, Hawkinge, & Cheriton. Connecting feeder services picking-up in Sellindge, Lympe, Saltwood, Hythe & Sandgate. All Departures include cruising-electric with Backwaters award-winning day cruisers, coach transfers with Eurotunnel crossings, 3* hotel stays, most meals, guide services and entrances.

No deposits required – payment on confirmation of booking 10-12 weeks pre-departure

Gardens of Picardy –Sun 8th May 2022 – 5 days including 3 half-day cruises of the Somme between Amiens and Abbeville and visits to some of the lovely Gardens of Picardy. Hotel in Amiens. **£750, solo supp £35**

Historic Flanders –Fri 29th July 2022 – 5 days including 3 all-day cruises on the Lys between Lille and Gent with a trip along the Belgian Coastal Tramway and time in Bruges, Gent, Kortrijk and Ypres for the Last Post Ceremony at Menen Gate. Hotel in Kortrijk. **£795 with solo supplement £95**

Champagne for the Birds! – Wed 12th October 2022 – 5 days including 2 full-day cruises between Reims and Châlons-en-Champagne, and a guided day at Lac du Der for the grand seasonal migration of European cranes. Sightseeing in Reims & Châlons, and a champagne tasting! Hotel in Reims. **£845, solo supp £75**

Remembering the Somme - Thu 3rd November 2022 – 3 days with two cruises covering the 42km between Amiens and Cappy, and guided visits to some of the historic locations and memorials of the Somme Battlefield. Hotel in Amiens. **£395 with solo supplement £25**

Mons Christmas Market - Sat 10th December 2022 – 3 days with two evenings spent at Mons Christmas Market and two half-day cruises between Mons and Ronquières, including the 73m boat lift at Strépy-Thieu and the 67m inclined plane at Ronquières. Includes military history guide as we follow the Canal du Centre around Mons and a visit to St-Symphorien Military Cemetery. Hotel in La Louvière. **£425 with solo supp £55**

For full narratives and/or to make a provisional booking please email info@backwaters.tours or call 01303 316116



**Freshly Prepared
Breakfasts & Light Lunches
Home Baked Cakes
Coffees
Teas**

**Open Tuesdays to Sundays
Dog Friendly**

**THE COFFEE CABIN TEA ROOM LTD.
CANTERBURY ROAD, LYMINGE, KENT.
CT18 8HU. 01303 864222
Instagram @thecoffeecabintearoomltd
Find us on Google Maps**



Cantores presents

***A Christmas Concert
with a difference!***

Save this date!

**Thursday 9 December 2021
at 7.30pm
Lyminge Village Hall**

Lots of surprises in store!

Tickets on sale soon
For more info - call 07840 796383 or email nancybenham@aol.com



Pet Photography

Studio or Location

Photo session & 2 prints £50

Call Albane to book!

07957 207 891

ALBANE PHOTOGRAPHY
72 Sandgate High Street,
Sandgate, CT20 3BX
info@albanephotography.com
[@albanepetphoto](https://www.instagram.com/albanepetphoto)



Coach & Horses



Quiz Nights: (always the last Wednesday of the month)
November 24th / December 29th - 7pm for a 7:30pm start
 - £2 for quiz or £7 for quiz and food. Groups or solo entries welcome! (No more than six per group)

Christmas Parties:

Available any day (except Sunday) from Dec 1st through to Dec 20th inclusive.

Two courses for £24 or three courses for £27, lunch or evening.
 Smaller course sizes available Monday through Thursday
 lunchtimes - two courses £14 or three courses £17
 Menu available upon request 01303 901011

Christmas Day:

Open for drinks from 11am to 1:30pm
 Open for food from 2pm with food served at 2:30pm.
 £55 per person for three courses - booking required 01303 901011. Menu available upon request 01303 901011

Boxing Day:

Open for drinks from 1pm to 7pm
 Food options will be limited to bar snacks

Charity Challenge on Boxing Day:

We have an exciting new annual charity challenge for anyone who wishes to take part. Spud wars!
 How good are your potatoes? Why not put it to the test? We are looking for entrants who think they make the best of any of the following categories: roast potatoes, mash potatoes, bubble and squeak and one buffet item (this can be any item you would expect to find at a buffet, be creative!)
 Participation costs £2.50 per category - any money raised will be put to use in the village. There will be a prize for the winner of each category. Participation encouraged by both adults and children! Entry forms available by email or from the Coach and Horses.

New Year's Eve:

Open for drinks from 12noon through to 1am.
 Open for food from 12noon to 2:30pm with bar snacks available until 8pm
 There will be a New Year's disco here at the Coach and Horses starting from 8pm - the event will be £5 per ticket and will include a drink up to the value of £5 and a small buffet. Please call 01303 901011 for more information or to purchase a ticket.

Emily and Fred

For bookings and any other help needed, please phone 01303 901011 or check Facebook page 'Coach & Horses'



Conscientious Cleaner Wanted

2 hours per week
 4 times per month
 £100

Please contact: 01303 273402

Rhodes Minnis Cat Sanctuary

(Registered Charity No 262245)

CHRISTMAS



FAIR

****New Location****

Hawkinge Village Hall, Canterbury Road
 Hawkinge CT18 7BS

*****Saturday 27th November*****
10am Start

- * Presents for you and your cat
- * Homemade cakes, Jams, and Savouries
- * Cards and novelty Items
- * Hamper Raffle * Tombola
- * Tea, Coffee and Cats

***** Entry Free *****

***** Ample Car Parking *****

Please come along. We look forward to seeing you. All proceeds go to feed the homeless cats at the Sanctuary over the Christmas time.

Railway Museum
 ELHAM VALLEY
 Countryside & Craft Centre
 Eham Valley Line Trust Railway Museum, Countryside & Craft Centre
 Peene, Folkestone, Kent. CT18 8AZ

Festive Craft Fayre

20th & 21st November
27th & 28th November 2021
10 a.m. ~ 4 p.m.

Unique Traditional Handcrafted Gifts
 Hot and Cold Refreshments

Christmas Special
 Miniature Train Rides
 Weather and availability permitting

FREE ENTRY and PARKING

Information correct at the time of printing

Railway Museum
 Entry Fee applies

www.elhamvalleylinetrust.org
 Registered charity No.295563



LYMINGE PARISH COUNCIL

NOVEMBER 2021 Newsletter

Forthcoming Council and Committee Agendas are displayed on the Council notice boards in Station Road car park and Tayne Field and the entrance to the Village Hall car park, Etchingill. Agendas and minutes are published on the Council's website: www.lymingeparishcouncil.org.uk and Facebook page. We invite you to read the minutes online or on the noticeboards which may provide the information you are seeking regarding a particular item, but correspondence is always welcome from parishioners and can be sent to the Clerk at the addresses given at the bottom of this page.

GRANTS FOR COMMUNITY GROUPS

- The council were again this year pleased to support an application from The Lyminge Association for a grant towards the cost of Christmas Trees for the village. If your organisation would like to apply for a project grant please have a look on our website for further information or contact the Clerk.



PARISH COUNCIL'S EXTERNAL AUDIT

- PKF Littlejohn LLP, the Council's external auditor, has returned its report which can be found on our noticeboards and website. As anticipated, last year's switchover from our basic accounting spreadsheet to the Scribe Accounting Software has

left a VAT anomaly when comparing this year's return to last year's. This will rectify itself when we submit the set of Scribe accounts at the end of this financial year.

HIGHWAYS

- With Autumn weather on the way, here is a reminder of how to report some of the common seasonal road problems: fallen branches, pot holes and blocked drains should all be reported to KCC Highways at:

<https://www.kent.gov.uk/roads-and-travel/report-a-problem>.

Street gullies which need cleaning can be reported via the FHDC website:

<https://www.folkestone-hythe.gov.uk/report-a-problem>.

STATION ROAD PUBLIC TOILETS

- The Station Road public toilets will be closed from Monday 18th October until further notice, for planned refurbishment work. It is anticipated that the works will take approx. 4 weeks to complete. Endeavours are being made to keep the disabled WC open to all members of the public whilst the ladies and gents toilets are being refurbished.

MEMORIAL BENCH - You may have noticed that the memorial bench on Broad Street has been removed. This is due to the location being on the site of the proposed new Pentland housing development. The decision for the application is imminent and council felt it sensible to move it to a safe place, should the green light be given for the works. It is safely stored and we will make a decision as to its new placement in due course.



'WILDLIFE POND' AT THE VILLAGE HALL AND 'SCRAPE' ON WELL FIELD

– As detailed within the Climate Action up-date in the August newsletter there is a plan in place to bring the whole of the newly fenced off area into a community wildlife space, working in collaboration with the Parish Council and 'The Ecology Co-op' (Ecological consultants).

The next steps include constructing a silt trap in the original pond to improve the quality of water in the new pond and constructing a new 'bee/bug hotel'. The plan also includes planting native pond plants such as yellow flag iris and purple loosestrife, to add a splash of colour, plus 'oxygenating' plants such as hornwort to help establish habitats for wildlife.



During the winter some native shrubs will be added to the corners of the site to help it blend into the surroundings and provide nesting and feeding habitat for birds.

Do keep a look out for progress and visiting wildlife.

NOVEMBER COUNCIL MEETING DATES:

F&A Committee - Monday 8th November at 7pm in the Rigden Room, Tayne Centre
Full Council - Wednesday 24th November at 7.30pm at Etchinghill Village Hall

Cherri Norman, Clerk and Responsible Financial Officer

Correspondence Address: Lyminge Parish Council, PO Box 1159, Canterbury, Kent
CT1 9PR

Telephone: 07715 221 705 Email: lymingepc@btinternet.com

www.lymingeparishcouncil.org.uk

[www.facebook.com Lyminge Parish Council](https://www.facebook.com/LymingeParishCouncil)

Community Safety Contacts

The **PCSO for Etchinghill, Lyminge and Rhodes Minnis** is
Nicholas Hazell, who can be contacted on 101

KCC Community Warden Gary Harrison can be contacted on 07977 982185



Thoughtful Food....

...is a group of local volunteers looking at our food, and how this impacts climate change. Our aims are to support people to produce more of their own food, and to shop locally, sourcing seasonal produce. We also run a community allotment in Lyminge and welcome new members.

Contact: thoughtfulfoodgroup@gmail.com or on Facebook and Instagram @thoughtfulfoodgroup

If you would like to attend our December meeting, please get in touch via email.

Gardening Workshops 2022

For the third year running, we are so pleased to be able to offer free-of-charge places on our three workshops for new or inexperienced vegetable growers. These will be held in Lyminge on the following dates:

Get Ready to Grow	-	Sunday 13th February 14:30-16:30
Seeds and Sowing	-	Sunday 20th March 14:30-16:30
Potting and Planting	-	Sunday 24th April 14:30-16:30



If you have always wanted to 'grow your own' or want to learn more, now's the time! To book your place, please email thoughtfulfoodgroup@gmail.com. Places will be allocated on a 'first come, first served' basis.

This is what one of our workshop attendees had to say about the 2021 sessions....

*"The course was all on-line due to covid restrictions but it was still felt very **friendly** and local. It was nice to know all the people were from **local** area and we would get to meet up eventually! Makes you feel part of the **community**. The course is **comprehensive** and takes you through all the basics from planning to sowing to planting and harvesting. Anne is a great teacher! There was lots of opportunities to ask questions to make sure it works for your space and own garden specifics. What was most valuable was **keeping in touch** between sessions to ask further questions and check on timings, for example when to transfer seedlings outside. I highly recommended it for beginners."*

Food Waste

In the UK alone, it's estimated we throw away 9.5 million tonnes of food waste every year, while 8.4 million people goes hungry. The average family throws away £700 worth of food each year. The vast majority of food waste ends up in a landfill site, releasing a great deal of methane gas as it breaks down, trapping heat within the atmosphere and contributing to global warming and the erosion of the ozone layer.

Over the next few months, we will give you some tips on how to reduce your food waste.

Top Tips:

I use a food sharing app called OLIO. "Food Waste Heroes" collect items from all the main supermarkets and local businesses and post on the app. You can request which items you want, set filters on how far you want to travel to collect them and everything is free. Bakery items can be turned into delicious desserts; fruits and vegetables can be made into marmalades and jams; surplus salad and leafy vegetables can be fed to farm animals and everything can be shared with your friends and neighbours.

Check out <https://olioex.com/> for more information.

Our lovely Lyminge countryside is also wonderful for foraging. Earlier in the year, wild garlic was picked for soups, falafels, pesto and salads. Then Elderflower for cordial and now Elderberries for making Christmas gifts of wine, gin and jam. Blackberries abound for puddings, jams, jellies, cordial and sauces for meat and game. Damsons are plucked for puddings, jams and sauces and sloes gathered for making sloe gin.

If you have a top tip you would like to share with us, please do get in touch!

Look out for some top tips to avoid food waste at Christmas in December's newsletter
Happy Growing and Eating!



Why is COP important to us and what can we expect from a changing climate?

The COP is the decision-making body of the international agreement (convention). All States that are Parties to the Convention are represented at the COP. A key task for the COP is to review the national communications and emission inventories submitted by Parties.

Recent extreme weather both in the UK and abroad has been linked to the changing climate and the latest IPCC assessment report is unequivocal about human influence on the climate. The Met Office report have also confirmed that the UK's climate is already changing with recent decades being warmer, wetter and sunnier than the past. Overall, as warming increases we are likely to experience:

- warmer, wetter winters and hotter, drier summers
- more extreme weather events and increased risks of drought, flood and wildfire
- increased coastal erosion and saltwater intrusion
- new pests and diseases

Our Kent coastal areas, wetland and montane habitats and cold adapted species of are all more vulnerable to these changes, which will have major impacts on biodiversity. The UK Climate Change Committees (CCC) recent assessment of climate change risks puts the viability and diversity of freshwater (i.e. Chalk Streams) and terrestrial habitats as one of the key risks areas requiring urgent government action.

Chalk Stream Strategy launched

A new strategy on the future of chalk streams has been published by the Chalk Stream Restoration Group.

The launch of the strategy is an important moment in setting the future direction to help protect these precious habitats. Chalk streams are a rare and valuable habitat. 85% of all chalk streams are found in England, mainly in the south and east of the country. However, the recent Water Framework Directive Classification results showed that only 17% of chalk streams meet 'good ecological status.'

The problems facing chalk streams are complex. Many are located in the most densely populated parts of the country, and climate change and population growth are a growing challenge. Unsustainable abstraction, combined with discharges and pollution from water companies, farmers and urban areas, and modifications of their channels and floodplains, have an enormous impact.

The strategy sets out actions and recommendations for government, regulators and the water industry on water resources, water quality and habitat restoration and management. This strategy is for everyone who has responsibility for, or uses, chalk streams such as the Lyminge Nailbourne.

It's peat burning season in northern England

More than 100 fires were reported in northern England's peatlands by the group Wild Moors this week. The fires were started to clear heather from estates on which there is grouse hunting, and their proliferation (5x more than last year) comes despite a partial government ban and climate summit just weeks away.

Preserving and restoring the country's carbon-rich peat bogs must be a 'top priority' if the UK is to achieve its net zero ambitions, according to the government's conservation watchdog.

The Royal Family gets outspoken on climate

- First, Prince Charles gave an interview to the BBC on environmental matters ahead of COP26. Among his most interesting comments were those concerning subsidies.
- "We still have fossil fuel subsidies, why?" he asked. And he described as "crazy" the fact there were still subsidies for what he called "insane agro-industrial approaches to farming which are a disaster in many ways, cause huge damage and contribute enormously to emissions".
- Then, Prince William gave the BBC an interview of his own. He took issue with some of the world's richest people pouring money into space travel rather than trying to repair this world. He went on to talk about climate anxiety amongst young people.
- And finally, we have the Queen, who is said to be "irritated" with people who "talk" but "don't do" on something about climate change.
- In a column for the Guardian this week, Chris Packham suggested: "What can the royals offer Cop26? A pledge to rewild their vast estates".

In aid of LORD WHISKY SANCTUARY FUND
(Registered Charity 283483)
Park House Animal Sanctuary,
Stelling Minnis CT4 6AN
Tel: 01303 862622
www.lordwhisky.co.uk
E: lord.whisky@btinternet.com



We are pleased to welcome you back to our Tea Rooms
at Gate Lane, Rhodes Minnis CT4 6XY.

Open daily from 9am to 4pm

Delicious breakfasts, lunches, cakes, Cream Teas etc.

Sunday Roasts (booking advisable) 01303 862349



Low-Income Veterinary Clinics

Monday & Friday, 2pm-3pm at Herne Common

No appointment necessary

Tuesday & Thursday, from 2pm at Rhodes Minnis

By appointment only. Ring 01303 862622

Lyminge Friends - November 2021

In October's meeting John Buss took us back many years with his tales of Growing up in the 1940s. So many memories!

This month, **Derek Smith** will be giving us an illustrated talk on

Custer's Last Stand or The Battle of Little Bighorn

Wednesday 3rd November 2021

at 10.30am in the Church

On **1st December**, **Andrew Ashton** will talk about **Banksy and Street Art** and the talk will be followed by our Christmas Lunch Party (must be pre-booked - call 862015)

Please wear a mask or shield and use the hand sanitiser provided. Don't forget that the door will be open and so you will need appropriate clothing. Please bring your own drink.

We look forward to seeing you

Meetings are 10.30am - 12.30pm in the Methodist Church. Entry fee for 2021 is £3.00.

We are a friendly social group and welcome new members so just drop into a meeting, or if you'd like to talk to one of us first, please call 863500.



WELL-BEING YOGA CLASSES

Well-being yoga classes designed to release aches and pain and to increase your flexibility are now available. Accessible to all abilities and ages, these classes will also help you become calmer and more peaceful.

The classes are run every Monday, 7.00-8.30pm at the Rhodes Minnis Village Hall, Chapel Lane, Rhodes Minnis, CT4 6XR. Cost: £12 pay-as-you-go or £9.50 per session when booking for the term.

Contact Michèle for details or to book: 07977 503897



Elham Village Hall

Thinking of marrying in Autumn 2021 or Spring/Summer 2022

Our venue is licensed to hold wedding ceremonies and Civil Partnerships either outside in our newly built gazebo with stunning countryside surroundings or inside if preferred.

Contact our bookings co-ordinator for details:

bookingsecretary.evh@gmail.com or

07746790618



**Lyminge
Historical
Society**



COME AND JOIN US

Our next meeting is on Tuesday 2nd November 2021 starting at 7.30pm in the Tayne Centre. The talk will be on 'The First Prize' – Why did so many invaders and settlers want England? The speaker is Imogen Corrigan.

Although Covid restrictions are rapidly easing and wearing masks is no longer compulsory, we do advise that you continue to do so and also use hand sanitiser. Do bring your own drink, as refreshments will not be provided until further notice.

If you did not pay your 2020 Membership fee, please pay separately for each visit to the end of the year, ie £4 per talk. Visitors also pay £4 per talk at the door.

We are very much looking forward to your company.

**Lyminge a history can be purchased individually through
the Premier Food Store and the Library**

Plus: purchase Parts 1-5 as a bundle for £22 or Parts 1-10 for £50*
To take advantage of the offer please call Daphne Andrews on 01303 862865. This bundle offer is not available from the shop.

*Postage and packaging extra Email: lymingehistoricalsociety@gmail.com

Website: www.lymingehistoricalsociety.co.uk

Facebook: www.facebook.com/LymingeHistoricalsociety

Write 300ish words on any subject - then send it to the editor

VACATION – On hearing that someone was busy, having just returned from a “vacation”, my mental image of him changed, from elderly English gentleman to someone young or American or possibly both. I checked out the word in the Oxford English Dictionary and discovered that it has an interesting pedigree. Originally it meant “freedom from” as in Chaucer’s “leisure and vacation / From other worldly occupation” (1386). In the 15th and 16th centuries the meaning was extended to “suspension of activity”, as of law-courts, universities and schools, and hence generally to the resulting “holidays”. It was in this sense that “vacation” was adopted in America as a word for “holiday” or “take a holiday”. Emily Dickinson’s *The Masque of Poets* (1878) reported that “At Saratoga...you meet ...people spending short vacations.”

Later I learnt from the newspaper that Allen Walker Read, the distinguished American word-researcher, had died at the age of 96. He had outlived his wife of 49 years, fellow scholar Charlotte Schuchardt, by just three months. Read’s popular fame was due to his investigation into the origins of the term “OK”. He rejected several appetising theories, including the Choctaw “okeh”, the Haitian “Aux Cayes” and the biscuit made by Orrin-Kendall for the US Army, eventually settling for the jokey “Orl Korrekt” deliberately mis-spelt in an 1839 Boston newspaper. The term was later used in the election campaigns of the eighth US president, Martin Van Buren, nicknamed “Old Kinderhook”.

Read also wrote articles for dictionaries and encyclopaedias, and produced a stream of books whose subjects included the history of words, US and UK slang, and graffiti in public lavatories. His latest books, published in 2001 and 2002, came at the end of a retirement that was, thankfully, long but not a “vacation” in any of the above senses of the word. (December 2002)

© Steve Osborne



Write 300ish words on any subject - then send it to the editor

The Lyminge Newsletter

can be viewed online (**and in colour**) at www.lyminge.org.uk/newsletter/ and then clicking on the current issue. Back-issues can also be viewed via this route.



Unit 11 Kingsmead, Park Farm Ind.
Est. Folkestone, Kent CT19 5EU

- Lamps (Light Bulbs)
- Indoor Lighting
- Outdoor Lighting
- Heating
- Lighting Repair Service
- Wiring Accessories
- Energy Saving Advice
- Delivery Service Available



Open to Public & Trade

☎ 01303 487272

✉ sales@lightandpowersolutionsltd.co.uk
www.lightandpowersolutionsltd.co.uk





Lyminge Pre-School



Lyminge Preschool provides quality Early Years education and day care all year round for children aged 2-5 years. The Pre-School is run by a team of qualified, highly experienced and dedicated practitioners.

Lyminge Pre-school has a safe, stimulating and fun environment that provides support and challenge for all of the children's individual needs. We welcome all children from the age of two from all surrounding areas.

To arrange to meet the team, please call 01303 863149 (day) or email lymingepreschool@gmail.com and visit our website www.lymingepreschool.org.uk

Etchinghill Baby & Toddler GROUP

10.15-11.30am every Wednesday
at Etchinghill Village Hall
£2.50 per child

We are excited to open Etchinghill's new parent and child group, welcoming babies and children up to the age of 2. Come and join us for a chat and a play. Call Chrissy on 07811682045 or Ruth on 07817777975 for further details or look at 'Etchinghill parent and child group' on Facebook.



Lyminge Baby and Toddler Group

Come along to our friendly toddler group at the Tayne Centre on Tuesday mornings between 10:00 - 12:00. We are open again from 7th September (term time only). It costs £2.50 per family and includes a variety of toys, ride ons, crafts and a singing session. Tea, coffee and healthy snacks are provided. First session is FREE!

If you have any queries please contact Natalie 07583 047056 or Sarah 07984 939220



Anna Lindley (RVN, Dip.A.Physio)

- Offering physiotherapy assessment and treatment of dogs, cats and small animals.
- I use a combination of manual therapy, laser, ultrasound therapy, TENS, kinesiology tape and exercises to rehabilitate your/their pet depending on the needs. I also address environmental and exercise factors that can help your pet with their condition.
- I now have a **NEW** treatment room where I can offer further assessment of your pet using a stance analyser. This identifies the mildest of lameness and addresses areas of compensation. I also offer home visits.
- Physiotherapy can help with arthritis and the ageing pet, post operative orthopaedic surgery, neurological, spinal conditions and many more conditions.
- I am fully insured with over 15 yrs experience working with animals. I am a member of the International Association of Animal Therapists (IAAT).
- For more information please visit my website: annasanimalphysio.co.uk or feel free to contact me on 07944 606453 or anna@annasanimalphysio.co.uk

Ashman Consulting Ltd



Straightforward I.T.

Advice
Training
Solutions
Support

Steve Ashman
07702641981

info@ashman-consulting.co.uk



BADGERS BRIDGE NURSERY

" Bridging the indoor and outdoor learning environment for children in their Early Years"

Badgers Bridge is set in the idyllic countryside of Postling, just outside Lyminge. We are a small and friendly Preschool who blend the Montessori principles with the outdoor learning ethos.

We were awarded Outstanding by Ofsted in 2018 in every area. This is a real achievement and we are really proud of the staff who work tirelessly to provide a stimulating and caring environment for the children of Badgers Bridge. The inspector was particularly impressed with our Forest School. *"Children enjoy limitless opportunities to explore, investigate and work together in the natural woodland environment. Staff skilfully inspire children to develop a significant understanding of the world in which they live".*

".....exemplary relationships between staff provide excellent role models for children and promote high standards of behaviour. Children make outstanding progress during their time at the nursery".

Exciting news! We have opened our new setting in Elham. We offer the same unique outdoor experiences for children from 20 months old. Come along and see us at The Gore!" So please call or email us:

Email : badgersbridge@gmail.co.uk

Website : www.badgersbridge.co.uk

Tel : 01303 862951

Postling Village Hall, The Street, Postling CT21 4EU

Ofsted Registered : 395128

Companies House Reg : OC375571



With our excellent local knowledge & experienced staff we will get you moving

- ✓ Free professional photography
- ✓ Free property floorplan
- ✓ Free Rightmove premium listing
- ✓ Free social media advertising

01303 863393

Laing Bennett
Independent estate & letting agents

Proudly serving Lyminge & The Elham Valley since 2009

The Estate Office, 8 Station Road, Lyminge, Kent CT18 8HP

Follow us on social media



www.laingbennett.co.uk

Rhodes Minnis Cat Sanctuary



REHOMING & BOARDING CATTERY

- Our Sanctuary takes in and rehomes 250 unwanted cats and kittens each year. A variety of cats are always available to suitable homes.
- 5* Boarding Cattery under 2018 regulations
- We are open to visitors every day from 10-1 & 2-4. No appointment necessary.

T: 01303 862 243

E: rminniscats@gmail.com

Facebook: [@rhodesminniscats](https://www.facebook.com/rhodesminniscats)

www.rhodesminnis.co.uk

Seathwaite, Green Lane, Rhodes Minnis, Kent. CT4 6XU
Reg. Charity No. 262245



Andy Mannering Flooring

SPECIALISING IN AMTICO AND KARNDEN LUXURY VINYL TILES

- Also safety flooring, rubber flooring, etc.
- Commercial and domestic work undertaken
- No job too small
- Free estimates and advice given
- Over 35 years experience
- Fully insured



Telephone: 0797 434 7248 or 01303 863095

Email: info@andymanneringflooring.com

Please visit my website for further information and feedback

www.andymanneringflooring.com

Park House Sanctuary Boarding Kennels & Cattery

**Park House, Stelling Minnis
CT4 6AN**

Brick-Built Heated Kennels
Daily Walks ~ Reasonable
Rates Dogs must be fully
inoculated

Heated Cat Chalets
Quiet Area Inspection Invited.

To book or for further
information, call
01303 862622

or email

lord.whisky@btinternet.com

www.lordwhisky.co.uk



GEORGE MILLER
PLUMBING AND HEATING

Formerly



Gas & Oil Boiler

Service, Repair & Installation

**New name, same
great service**

☎ 01303 901070

✉ service@georgemiller.co.uk

📍 248 Cheriton Road,
Folkestone, CT19 4DN



georgemiller.co.uk



POSTCODE LOTTERY SCAM

- from KCC Public Protection

There is currently a scam telling people by text, email or letter from the People's Postcode Lottery that they have won a large amount of money.

Legitimate lotteries will never ask you to pay anything to receive your winnings or to keep your winnings a secret. If you haven't bought a ticket, you can't be a winner. If you have entered a competition, you can only win the prize which has been advertised.

If you are unsure about anything you receive from People's Postcode Lottery, contact them on 0808 109 8765 or info@postcodelottery. For advice and to report issues to KCC Trading Standards contact: Citizens Advice consumer helpline: 0808 223 1133 or Consumer Advice scams action line: 0808 250 5050. Mon to Fri from 9am to 5pm. Or visit the website: <https://www.citizensadvice.org.uk/consumer/scams/get-help-with-online-scams/>

SNIPPERS & CLIPPERS UNISEX HAIR SALON

✂ APPOINTMENT NOT ALWAYS NEEDED

✂ WEDDINGS & SPECIAL OCCASIONS

✂ SHELLAC NAILS

✂ FREE WIFI

✂ GENTS WELCOME

📍 4 Station Road, Lyminge
Folkestone
Kent, CT18 8HP

☎ 01303 647 222

✉ info@snippersandclippers.co.uk



Find us on
Google+

Find us on:
facebook



Tamsin Steel Art
PET & WILDLIFE ARTIST



**Beautifully
detailed, realistic
portraits, turning
your photographs
into beautiful
pieces of art.**

**A special gift for
yourself, family
and friends.**

www.tamsinsteelart.com

email: tamsinsteelart@gmail.com

The Lyminge Association

We're here to support and develop our community!!

Contacts:

Chair: Nancy Benham 01303 863076 or 07840796383
nancybenham@aol.com

Vice Chair: Peter Barnes 01303 863737 or 07808775302
pb@pbarnes20.plus.com

Treasurer: Janet Fry 01303 863177
janet@rhodesminnis.org.uk

Committee Members: Adrian Willcox, Marian Chubb, Richard Chubb, Dave Hunt-Cooke, Gillian Heywood, Derek Smith, Ray Smith, Penny Stephens

Newsletter: As for Peter Barnes above

ETCHINGHILL VILLAGE HALL HIRE FEES

The next time you are thinking of holding a function why not try Etchinghill Village Hall, which holds the highest Hallmark accreditation level (Hallmark 3), with its excellent facilities, including ample parking space.

The standard hire charge for the main hall and kitchen are:

ANY DAY OF THE WEEK' ANY TIME £12 PER HOUR

No winter supplements. No extra charges.

Ideal for family parties and get togethers.

The use of a separate Committee Room is also available.
For all bookings or enquiries please contact:

The Duty Manager on 07514 758936



for buses from Lyminge **The Sidings** to
Folkestone town centre via Etchinghill & Cheriton High Street

MONDAYS TO SATURDAYS except Bank Holidays

There are route 17 buses at 0705 (not Saturdays), 0749, 0909, 0934 (not Saturdays), 1004, 1034, 1104, 1204, 1304, 1404, 1514, 1614, 1619 (schooldays only), 1654 (schooldays only), 1719, 1749, 1834, 1929, 2113 and 2313.

There are also route 18 buses to Sandling Station & Hythe - for times see our website or call the number below.

SUNDAYS & BANK HOLIDAYS

There are route 17 buses at 1032, 1302, 1532 and 1802.

for buses from Lyminge **Wesley Terrace** to
Canterbury city centre via Elham, Barham & Bridge

MONDAYS TO SATURDAYS except Bank Holidays

There are route 17 buses at 0727 (schooldays only), 0732, 0752, 0903, 0938, 1028, 1128, 1235 (1228 on Saturdays), 1335, 1443, 1608 (1613 on Saturdays), 1703, 1803, 2001 and 2201.

There are also route 18 buses to Canterbury via Stelling Minnis and Bossingham - for times see our website or call the number below.

SUNDAYS & BANK HOLIDAYS

There are route 17 buses at 0903, 1133, 1403, and 1633.

These bus times will operate from 28 October 2018.



03456 00 22 99 @StagecoachSE
southeast.enquiries@stagecoachbus.com
stagecoachbus.com

Editor: pb@pbarnes20.plus.com



Large hall with stage, new kitchen and flexible hire

Excellent parking facilities, disabled access, proximity to playgrounds and playing fields. Beautiful countryside location.

Capacity:

200 people dancing/audience seating, 100 with tables
Small rooms available for up to 50 seated

Find out how we can help you with your next event:

BOOK ONLINE: lymingevillagehall.org.uk

EMAIL: admin@lymingevillagehall.org.uk

INFO: 07525 909185

Guideline prices

MAIN HALL + KITCHEN HIRE: FROM £50

SMALL ROOM HIRE: FROM £20

EXCLUSIVE ALL HALL/ALL WEEKEND ~ £320

Find us on Facebook Registered charity 28145

Rhodes Minnis Village Hall

Charity No.800345

Rhodes Minnis Village Hall is located 2kms (1¼miles) from Lyminge and just off Longage Hill and Whitehorse Lane in Chapel Lane

The hall, which holds Hallmark accreditation, is ideal for children's parties, band practice, quizzes, meetings, wedding receptions, fundraising events and much more. It has a fully equipped kitchen.

Rates

Mon to Fri £18 per session £48 all day

Sat & Sun £23 per session

£33 for evening session and £69 all day

Sessions

AM session 08.30 - 12.30

PM session 13.30 - 17.30

Evening session 18.00 - 23.45

Separate rates for Bank Holidays and New Year and special rates for regular users.

For all bookings and enquiries please contact:

Mick & Dorothy Athow 01303 862616 e-mail: mick@athow.co.uk

TAYNE CENTRE HALL HIRE

Previously known as the Lyminge Methodist Church Hall



Clayson Hall

1 October to 31 May (including heating) £9.50 per hour :
£34.00 per 4 hour session : £66.00 full day

1 June to 30 September

£7 per hour : £25.00 per 4 hour session : £48.00 full day

Rigden Room (Parlour) with heating, if required*

£7 per hour all year (*electric - over heaters).

Burren Room - storage only

Overnight Stays

1 June to 30 September £50; 1 October to 31 May £60

For any enquiries please call **07716 521 405**

Lyminge Library Opening Times

Monday 10am - 2pm
Tuesday 12noon - 5pm
Wednesday 10am - 2pm
Thursday 10am - 5pm
Friday 10am - 2pm
Saturday 9am - 1pm

Tel: 03000413131 lymingelibrary@kent.gov.uk

AIR LINK CARS

(You pack up, we pick up)

Airport, Seaport & Long Distance Travel Specialists.
The Family Run Business where service really counts
Estate cars and People Carriers



Fixed price 24hrs a day. No extras.
Written Confirmation of booking.
For the Easy Airport Link, Think AIR LINK!
01303 670370 - 07766 824 474
airlinkcars@yahoo.com



Dennis Huntley
Chimney Sweep



Wood burners and multifuel stoves installed
Hearths and fireplaces built & installed
Over 40 years' experience

01303 862 343 • 07850 784 365

dennis.huntley@talktalk.net • www.dennishuntley.co.uk



PODIATRY/CHIROPODY - LYLE-ISABELLE ARNOLD

MCPod, B.Sc Pod, ACC

For the diagnosis and treatment of and including the following:

- Diabetic Care
- The permanent surgical removal of ingrowing toenails
- Orthotic correction of biomechanical issues
- Painful joint or soft tissue issues
- Routine treatment of corns, callouses and nails
- Verrucae

Patients seen by appointment only – 01303 863359



Sunhouse Electrical

Your local reliable Electrician
Part P Registered & Elecsa Approved
On Electrical Safety Register & Fully Insured
For a free quotation call James on
01303 766333

www.sunhouse-electrical.com

Gosbee
LANDSCAPES

FENCING | GATES | PAVING | RESIN BONDING
• Over 35 years experience • Jacksons Approved Installer
• Marshalls approved • Check-a-trade registered

Call Martin Gosbee: 07974 835 511 | 01303 863 337

GOSBEECONSTRUCTION@GMAIL.COM
GOSBEE.CO.UK



SHARPENING

*Knives, Gardening Shears,
Secateurs, Edge Clippers, Scissors,
Chisels, Plane Blades,
Mower Rotor Blades, Chain Saws*

Free collection and delivery locally.
Please call 01303 863743 or 07961019616 or
email: esposito321@btinternet.com
Please ring for prices.



MANOR
VETERINARY CLINIC

We care for them all, great and small

Due to the current situation our Lyminge and Capel branches are temporarily closed. For enquiries, please contact our Folkestone practice

Please call to book an appointment - 01303 273203

www.manorveterinaryclinic.co.uk

HANDYMAN
SERVICES
SJW

www.Facebook.com/sjwoodhandyman
www.Instagram.com/sjw.handymanservices
07796 384857

SPRINGRISE
CANINE CARE SERVICES

*Dog walking, pet and smallholding
sitting, dog day care, dog
accommodation & dog playground
and so much more....!!*

Free (no obligation) consultation.
CV & references available.
Fully insured and security
screened.

Mobile: 07582407637 Email: susannahparkin@googlemail.com
Website: caninecare.thespringrise.co.uk



AK Healthcare

Tel: 07904311554 /
07980897382
www.akhealthcare.org.uk

We help patients suffering from a wide variety of conditions including arthritic pain, circulatory problems, frozen shoulder, back pain, sciatica and much more.

Please visit our website or give us a call for more information.

**AK Healthcare,
Garden Suite,
4 Station Road, Lyminge**

LYMINGE FOOD & WINE
01303 862225



PayPoint

Our new opening times are:
Mon – Sat **7:00-20:00**
Sunday & Bank Holidays
8:00 – 20:00

**POST
OFFICE**



We offer National Lottery, ATM terminal,
Post Office & PayPoint services.

South East Aerial & Satellite Solutions

Digital – Freeview – Satellite – Aerials

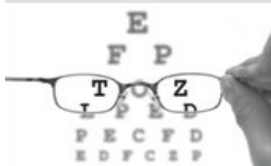
Supply and fit of quality digital installations, FREEVIEW, SKY, aerials, poor reception and problem solving, upgrades and repairs by fully accredited engineers

Free quotations and advice, fixed prices, fully insured

Freeview

NO CALL-OUT CHARGE
07825 168010 - 01303 862361

freesat



HOME VISITING OPTOMETRIST - providing professional eye care in your home

If you are over 60 years of age and no longer able to get out on your own, then you are eligible for a NHS sight test in your own home. Please call to arrange an appointment:

Elaine Edwards BSc(Hons)MCOptom 01303 840541

Registered with the General Optical Council (01-15421) Member of the College of Optometrists Member of the Association of Optometrists

Financial Planning

David Gridley - Chartered Financial Planner

Range of quality advice from a fully qualified adviser:

- Pre- and Post-Retirement Planning
- Investment Planning
- Inheritance Tax Planning

For further information, please contact our Lyminge office
David Gridley FPFS

Tel: 01303 863959 Email: davidgridley@sjpp.co.uk

MWH

window and gutter cleaning service

Mark Haley

Lyminge and surrounding areas

For a free no obligation quote, please contact me

Mobile: 07738 479202

Home: 01303 863 702 Email: haleymark161@gmail.com

Find us also on Facebook



OIL BOILER SERVICE

Professional Friendly Service. Prompt Response to Breakdown Calls. Over 40 Years Experience.

For Routine servicing, emergency breakdown calls and commissioning, contact:

P & V QUENBY LTD (Est 1987)

01227 760428

www.oilboilerskent.co.uk

T. Metcalfe Fencing Contractors

Approved Expert Installer for Jacksons Fencing

Established over 30 years

Fully insured - Highly experienced teams



Panel fencing, gates, decking, pergolas, post & rail, stock fencing, security, landscaping & tree surgery.

01303 840201

07790 290 155

metcalfefencing@btinternet.com

Proprietor - Derek Burr,
Ash Ridge House, Elham



**Lou Lloyd
Carpenter**

loulloyd@rocketmail.com

07984 426214

**Kitchens, Flooring, Wardrobes,
Doors, Decking and more!**

Fincham Plumbing & Heating

Over 30 years experience. Gas Safe, CIPHE, WIAPS registered
Lyminge residents

**Rosemary and Martin Fincham
07835 851 706**

For your bathroom installations from start to finish,
tiling, plumbing, gas, heating, radiators, boiler servicing
Free estimates

KSL Maintenance

New Builds and Repair

Timber Sheds, Carport, Garage extension, Shelter,
Decking, Agri / Equestrian or Household Fencing and
Gates. Steel Fabrication and Mig Welding projects

Text/call: 07805 773251

Email: kevin.leppard@gmail.com

Will respond within 24Hrs. Based in Rhodes Minnis.

HAND MADE CURTAINS, ROMAN BLINDS & SOFT FURNISHING

CURTAIN ALTERATIONS

TEL: VALERY WREN 01303 237755



D & S DOUBLE GLAZING SERVICES

01303 863689 - 07912317915

We are a local company that specialise in double glazing repairs offering a wide range of service's that include: Replacement double glazed units - Locks - Hinges - Handles - Rubber Seals - Gaskets.

For a free estimate please call: **07912317915** or **01303 863689**
or email: **dsdoubleglazingservices@gmail.com**



CEDAR TREE CARE

All types of tree work undertaken

Crown lifting, crown reductions,

dismantling and removals, hedge maintenance,

pollarding, stump grinding and removal, mobile saw milling,
wood land maintenance, all year round seasoned logs available

Fully insured and NPTC qualified with over 15 years experience

Call Tom: 07769 908027 email:linchlot5@gmail.com



Sarah de Rougemont

Craftsman/Co-ordinator

UPHOLSTERY

All commissions considered
01227 455841 or 07973 377817



All Aspects of Tree
Work Undertaken
NPTC Qualified
Fully Insured
Please call **Shane** for
a Free Quote
07963 203564 or
01303 621992

To advertise in this space, please contact

Peter Barnes : pb@pbarnes20.plus.com : 01303863737 : 07808775302



Snippers and Clippers Barbers - Lyminge

Opening hours

Please call Richard (07522494969) for current availability. Days and times may vary this month.

4 Station Road, Lyminge CT18 8HP

Follow us on  **facebook** for offers

Amy Mills - Sports Massage Therapist



Sports massage is not only beneficial form of physical therapy for active sports people, but also for those seeking relief from muscle tension brought on by daily life

- * Pain management
- * General injuries and muscle soreness
- * Training recovery
- * Improve performance
- * Flexibility
- * Tension / Stress / Relaxation

07908472262 millsya87@gmail.com
www.consciouscreations.biz



DILTON MINI SKIP HIRE

Ballast, Hardcore, Sand
and Topsoil Supplied

REGISTERED WASTE CARRIER

01303 812448 or 07799 433754

Red Dragon I.T. Ltd.



- Windows, Mac & Linux Systems
- PC Health Checks
- Wired & Wireless Networks
- Website Design
- Graphic Design

T: 01303 723456 | E: info@rdit.co.uk | www.rdit.co.uk

The Old Granary, Hanover Mill, Church Rd, Mersham, TN25 6NU



'Helping you enjoy your garden'

CRT Gardening

All general garden work undertaken including: garden design, hard and soft landscaping, new fencing installation and repairs, decking installation, hedge trimming and cutting, fruit and vegetable garden work, small to medium tree work. For a free quotation call either

Karl Dodd 07967 442518 Katie Dodd 07966 301978

or email karl.dodd@live.co.uk katie.dodd@live.co.uk

Fully Insured



Hawkinge

Veterinary Surgery

Independently owned veterinary surgery for all types of small animals.

Opening hours: Monday to Friday 08:00-19:00 Saturday 08:30-13:00

24hour emergency service

TEL: 01303 764190

Hawkinge Veterinary Surgery, 9b Defiant Close, Hawkinge CT18 7SU

www.hawkingevetsurgery.co.uk



ROBERT KENT Cert.fp
FUNERAL DIRECTOR

**Direct
Cremation**

£999

**Fair Priced
Cremation**

£1950

**ONE FIXED PRICE INCLUDING
ALL CREMATION FEES**



01303 684062

RKFUNERALS.COM

SCRUBBERS - Est. 1988

THE HOME AND COMMERCIAL CLEANERS

One off, regular or moving day 'Blitz'

Oven cleaning - Ironing

Carpet cleaning and more...

For a friendly and reliable service

Free Estimates

Tel: 01303 249288 or 07834 128671

Computer support & repairs by local people

Customer service is our priority

- *Remote IT support for business or home
- *New & refurbished sales
- *Call-outs for business or domestic users
- *Preventative maintenance & upgrades
- *Repairs to most phones, tablets & devices

enquiries@thecomputerpeopleltd.co.uk



Church Approach,
New Romney,
TN28 8AS
01797 363385



Acrise Electrical Services Limited

Design - Install - Maintain

Tel: 01303 656007 Mob: 07803 421240

Email: info@acrise-electrical.co.uk

Website: acrise-electrical.co.uk

Domestic, commercial, industrial & agricultural electricians serving the Elham Valley and surroundings.

Tressenden Designs

A seamstress and costume maker with 8 years of experience.

- ♦ Clothing alterations ♦ Repair work undertaken ♦ Made-to-measure; create a bespoke piece for those special occasions
- ♦ Modern and vintage designs ♦ Costumes, ball gowns and wedding dresses

For more information or a quote please contact Amy on: Mobile: 07853 202304 Email: amy.louise.ford@hotmail.co.uk



D.M.B. Plastering

All aspects undertaken
Interior. Exterior. Plastering. Rendering.
Coving. Ceilings. Wall. Floors
Finest quality assured. CSCS Certified.
30 years experience.

Free estimates. Reliable service. Fully insured.
Call **David** on **07818 607209**



Need to talk?

Confidential and compassionate
qualified counsellor here to listen.
Please call or text Natasha on 07593 794321
All messages replied to
Email: forestlodgetherapy@gmail.com
www.forestlodgetherapy.com

FILEHURST ASSOCIATES

YOUR COMPLETE REMOVALS AND STORAGE SOLUTION

☎ **01303 239990** ✉ **info@filehurst.co.uk**

Domestic & Business Removals - UK wide & France
Business Document Storage

Call Nick for a no-obligation quote

B.M. Plumbing & Maintenance Services

Local Lymington Tradesman

Plumbing and heating works. Complete bathroom
install including tiling. General building maintenance
undertaken. No job too big. No job too small.

Cheaper rates for senior citizens

07890854128 Benmillsplumbing@hotmail.co.uk



Wilco Plumbing & Heating

Central Heating Installations & Repairs
Gas & Oil Boiler repairs & replacements
5 Year Guarantee on Worcester Bosch Boilers.
Local Experienced Engineer, Emergency plumbing 24/7 call out
Registered with the Institute of Plumbing
Gas Safe Registered-OFTEC Registered
01303 862173 07860 452640
paul@wilcoplumbing.co.uk www.wilcoplumbing.co.uk

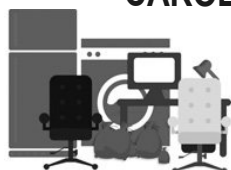
JON DAUGHTERS - Local Builder

All aspects of general building works undertaken including:
roofing, kitchens, bathrooms and small extensions

Trading for over 30 years
Free quotes, no obligations, fully insured
Telephone: 01303 863371
Email: daughters777@hotmail.co.uk

House Clearance covering South East Kent.....and beyond!

CAROL CREES CLEARANCES



- Est. over 30 years
Full/part house clearance
Fair prices paid
Antique/Vintage/Retro/Modern
Registered rubbish carrier

Contact **Simon Cullen** on **07745 421680** or **sijnzo@aol.com**



www.eastkentfootcare.co.uk

07745 532075

**Podiatry, Chiropody,
Foot Health**

Treating and managing foot
and nail conditions, corns,
callus, insoles, ingrown nails,
diabetic foot care



Total garden care for all your needs

TIM MILLETT

Grass Maintenance, General Gardening, Small & Medium
Size Tree Work, Stump Grinding and Wood chipping
Fencing Repairs & New Installations
Turfing, Hard & Soft Landscaping

Free Estimates - Fully Insured

01303 863676 07752 880583

Email: **info@tmhorticulture.co.uk**

THE BIG LITTLE BATHROOM COMPANY



COMPLETE BATHROOM SUITES • BESPOKE CAST IRON RADIATORS
TAPS • SHOWERS • TILES • ACCESSORIES • TEA & COFFEE

CANTERBURY ROAD, ETCHINGHILL, KENT CT18 8BS
sales@theblbc.co.uk • 01303 864349 • www.theblbc.co.uk

N.P.C.

Domestic Appliance Services

Service and repair of washing machines, tumble driers,
dishwashers, cleaners and small electrical work.
For a prompt and friendly service

Call Neil Collard 01303 892234 or 07798716044
or Google me on Yell.com

Auto Economy Centre

Fully equipped Mechanical Repair & Service Centre

With the latest diagnostic equipment

Half price MOTs when booked with any service

01303 863656

Orchard Garage, Canterbury Rd, Etchinghill

www.autoeconomycentre.com

Old English Pine

CLOSING IN JANUARY 2022

Tel: 01303 248560

www.oldenglishpineinkent.co.uk

100 Sandgate High Street, Sandgate



T.M. GRIGGS

01303 489795 07854 098395
tobystreesurgery@gmail.com



**Garden Clearance - Turfing - Hedge Cutting
Tree Work - Stump Grinding - Fence Repair**



**APX PROJECT
MANAGEMENT**

From design to build, we use trusted quality trade professionals along with reliable suppliers to ensure budgets are met, with high standards maintained. If you're looking to -

- Extend your property
- Carry out an external or internal refurbishment
- Convert an existing building into a new dwelling

Please contact: paul@apxprojectmanagement.co.uk 07487 364155

FRESHLOOK GARDENS

Regular lawn mowing service. Garden design. Hard and soft landscaping. General garden work, fencing and decking. Turfing hedge cutting, small and medium tree work. Water features, ponds and patios.

For free quotation ring **Danny Scott**
01303 242140 or **07795510093**
mrdanscott89@gmail.com

Established since 1990. Fully insured.



colebrooksturrock.com
still THE local and regional specialist...

SALES & LETTINGS
Call now for your free market appraisal
01303 840422
elham@colebrooksturrock.com

Browns

Sandwich | Bridge | Minster | St Margarets At Cliffe | Walmer | Saltwood | Elham | Hawkinge

Computer Repairs

01303 241325
07968 129902

PCs, MACs, Laptops, Tablets & printers,
Upgrades & Repairs, Internet & Email, virus removal,
Office Setup, Backup & Recovery & much more ...
Tuition available by a qualified tutor.

Usual Fee **£55**

Web sites built & hosted from £10 per month

See www.computers-in-lyminge.co.uk for details



Local Tradesman

J Tappenden

Established 36 years

Painter/Decorator

01303 862467

077755 78008



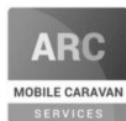
Alan Croucher
Caravan Engineer

07921 480919 - 01303 863194

Caravans & Motorhomes "WE COME TO YOU"

www.arcmobilecaravanservices.com

"Your manufacturer's warranty is safe in our hands"



Jackson Plumbing Property Maintenance

Complete bathrooms and tiling
No job too small. Special rates for OAP's.

**Telephone: home/evening 01303 270691
or daytime 07773 089398 or 07864 929826**

A. J. Athow

**BUILDER & DECORATOR
GENERAL MAINTENANCE**

Telephone: 01303 862616

Mobile: 07541 792238

Email: tony@athow.co.uk



Serving Elham Valley for 30 years
Part P Registered

**01303 862348
07850 970087**



Ralph Allard
Chimney Sweep



All chimneys, boilers and stoves swept.

Brush and Vacuum. Certificates issued.

HETAS and NACS registered, fully insured.

Member of National Association of Chimney Sweeps

01303 844465 or 07813716654

Trevor Law Electrical Installations

Serving Elham Valley for 30 years
Part P Registered

**01303 862348
07850 970087**

J. V. Services Mobile Mechanic

Servicing and Repairs:

- Garden Machinery
- Ride on Mowers
- Trailers & Horseboxes
- Quad Bikes
- Classic Cars

(Free collection and delivery)

Serve/Repair/Full Restoration:

- Compact Tractors
- Vintage Tractors
- Classic Tractors

**Mobile: 078 0300 3047
john@jvserviceskent.com**



**JBS
BUILDERS**

Specialising in Driveways, Brickwork, Patios, Fencing, Landscape Gardening. Tree work undertaken (lopping, felling and clearing).

General household repairs, painting, plastering, power jetting & cleaning.

No job too small!!! All work guaranteed and insured.

For free advice and quotations please call: 07825 168010/ 01303862361 (anytime)



Out & About..

Do you have any photos of local events or groups in action? If so, can you please forward them along with a few words to pb@pbarnes20.plus.com



Cantores Choir
performing Purcell's
'King Arthur' recently in
the Lyminge Village Hall

Some of the newsletter
deilverers enjoying
afternoon tea at the Coffee
Cabin as a Thank You for all
their hard work each month.



Wayside Watch

If you have any photos of favourite wild flowers, or any interesting wildlife, please send them to adrian.willcox@icloud.com together with a few words about them. Mystery ones also very welcome!!



This picture was sent in recently of a **Jersey Tiger Moth** taken on a window near a Buddleia bush. This moth is mainly found in the south of England. In this photo the stripes appear rather reddish although they are cream, but the underwings are a bright reddy-orange which is showing through. The caterpillars feed on ground ivy, nettles and brambles.

Jays [Garrulus glandarius] are found across most parts of the country, but since they are rather shy birds, they are not often seen. When travelling, [so unable to actually take a photo], towards the Beachborough roundabout I have seen them flash across the road, with the distinctive white rump and blue flash as they dart between trees. They are the most colourful members of the crow family [Corvids or Corvidae] and are very partial to acorns which they will bury and retrieve later in the winter.



Mystery Flower !



☞ This flower has been identified by a local person who called herself an 'interested amateur gardener' as **Monarda didyma**. It is part of the mint family Lamiaceae. It has several common names, such as Bee Balm, Horsemint and Bergamot. The latter because of its very aromatic leaves.

At last ! The tiny yellow flower is named ! Frances Blanchet, Maureen Cox and Laurence Willis [from Somerset, who was staying at Sibton Park] all came up with **Creeping Wood Sorrel** [Oxalis corniculata]. Quite pretty but regarded by many as a very invasive weed in their gardens! The leaves do indeed contain Oxalic Acid.



Wayside Watch is taking a break for the winter but will return in the spring.
adrian.willcox@icloud.com

BASED AT
LYMINGE
VILLAGE HALL



WELCOME TO OUR OUTSTANDING PRESCHOOL

WHERE YOUR FAMILY IS OUR PRIORITY



OUTSTANDING
OFFSTED

WRAP AROUND CARE
8- 6PM DAILY

LONGSTANDING STAFF

NATIVITIES, PARADES
& FAMILY EVENTS

QUALIFIED
PROFESSIONAL TEAM

FANTASTIC FACILITIES
& GARDENS

COUNTRYSIDE
SETTING

HOLIDAY CLUB OUTSIDE
OF TERM TIME

LINKED TO LOCAL
PRIMARY SCHOOL

'BABY'S DAYS'
PARENT PORTAL

EARLY YEARS EDUCATION & DAY CARE FOR CHILDREN AGED 2- 5

WE'D LOVE TO HEAR FROM YOU!



01303 863149



LYMINGEPRESCHOOL@GMAIL.COM